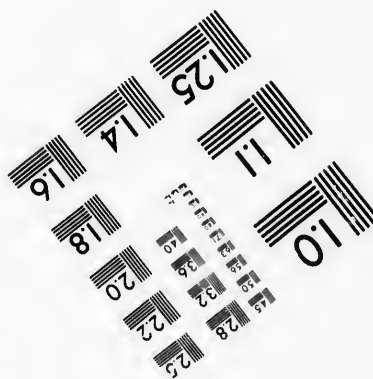
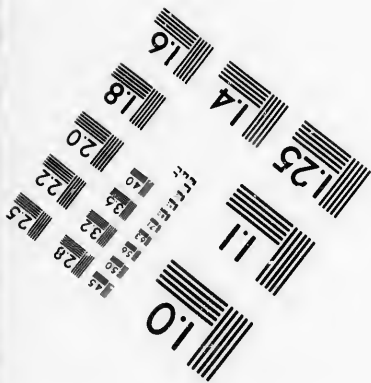
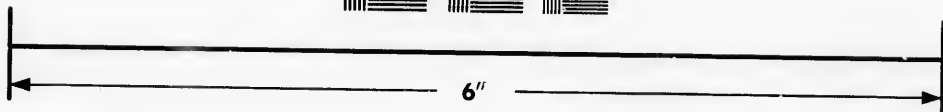
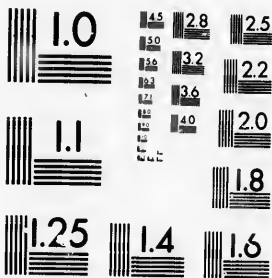


**IMAGE EVALUATION
TEST TARGET (MT-3)**



**Photographic
Sciences
Corporation**

23 WEST MAIN STREET
WEBSTER, N.Y. 14580
(716) 872-4503



**CIHM/ICMH
Microfiche
Series.**

**CIHM/ICMH
Collection de
microfiches.**



Canadian Institute for Historical Microreproductions / Institut canadien de microreproductions historiques



© 1986

Technical and Bibliographic Notes/Notes techniques et bibliographiques

The Institute has attempted to obtain the best original copy available for filming. Features of this copy which may be bibliographically unique, which may alter any of the images in the reproduction, or which may significantly change the usual method of filming, are checked below.

L'Institut a microfilmé le meilleur exemplaire qu'il lui a été possible de se procurer. Les détails de cet exemplaire qui sont peut-être uniques du point de vue bibliographique, qui peuvent modifier une image reproduite, ou qui peuvent exiger une modification dans la méthode normale de filmage sont indiqués ci-dessous.

Coloured covers/
Couverture de couleur

Coloured pages/
Pages de couleur

Covers damaged/
Couverture endommagée

Pages damaged/
Pages endommagées

Covers restored and/or laminated/
Couverture restaurée et/ou pelliculée

Pages restored and/or laminated/
Pages restaurées et/ou pelliculées

Cover title missing/
Le titre de couverture manque

Pages discoloured, stained or foxed/
Pages décolorées, tachetées ou piquées

Coloured maps/
Cartes géographiques en couleur

Pages detached/
Pages détachées

Coloured ink (i.e. other than blue or black)/
Encre de couleur (i.e. autre que bleue ou noire)

Showthrough/
Transparence

Coloured plates and/or illustrations/
Planches et/ou illustrations en couleur

Quality of print varies/
Qualité inégale de l'impression

Bound with other material/
Relié avec d'autres documents

Includes supplementary material/
Comprend du matériel supplémentaire

Tight binding may cause shadows or distortion along interior margin/
La reliure serrée peut causer de l'ombre ou de la distorsion le long de la marge intérieure

Only edition available/
Seule édition disponible

Blank leaves added during restoration may appear within the text. Whenever possible, these have been omitted from filming/
Il se peut que certaines pages blanches ajoutées lors d'une restauration apparaissent dans le texte, mais, lorsque cela était possible, ces pages n'ont pas été filmées.

Pages wholly or partially obscured by errata slips, tissues, etc., have been refilmed to ensure the best possible image/
Les pages totalement ou partiellement obscurcies par un feuillet d'errata, une pelure, etc., ont été filmées à nouveau de façon à obtenir la meilleure image possible.

Additional comments:
Commentaires supplémentaires:

There are some creases in the middle of the pages.

This item is filmed at the reduction ratio checked below/
Ce document est filmé au taux de réduction indiqué ci-dessous.

10X	12X	14X	16X	18X	20X	22X	24X	26X	28X	30X	32X
<input type="checkbox"/>	<input type="checkbox"/>	<input type="checkbox"/>	<input type="checkbox"/>	<input type="checkbox"/>	<input type="checkbox"/>	<input type="checkbox"/>	<input type="checkbox"/>	<input checked="" type="checkbox"/>	<input type="checkbox"/>	<input type="checkbox"/>	<input type="checkbox"/>

The copy filmed here has been reproduced thanks to the generosity of:

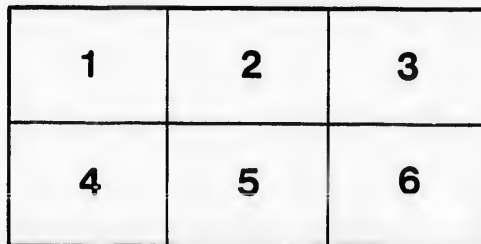
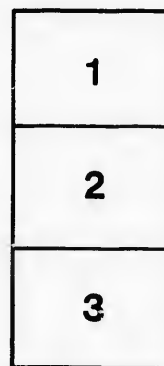
McLennan Library
McGill University
Montreal

The images appearing here are the best quality possible considering the condition and legibility of the original copy and in keeping with the filming contract specifications.

Original copies in printed paper covers are filmed beginning with the front cover and ending on the last page with a printed or illustrated impression, or the back cover when appropriate. All other original copies are filmed beginning on the first page with a printed or illustrated impression, and ending on the last page with a printed or illustrated impression.

The last recorded frame on each microfiche sheet contains the symbol \rightarrow (meaning "CONTINUED"), or the symbol ∇ (meaning "END"), whichever applies.

Maps, plates, charts, etc., may be filmed at different reduction ratios. Those too large to be entirely included in one exposure are filmed beginning in the upper left hand corner, left to right and top to bottom, in as many frames as required. The following diagrams illustrate the method:



L'exemplaire filmé fut reproduit grâce à la générosité de:

McLennan Library
McGill University
Montreal

Les images suivantes ont été reproduites avec le plus grand soin, compte tenu de la condition et de la netteté de l'exemplaire filmé, et en conformité avec les conditions du contrat de filmage.

Les exemplaires originaux dont la couverture en papier est imprimée sont filmés en commençant par le premier plat et en terminent soit par la dernière page qui comporte une empreinte d'impression ou d'illustration, soit par le second plat, selon le cas. Tous les autres exemplaires originaux sont filmés en commençant par la première page qui comporte une empreinte d'impression ou d'illustration et en terminent par la dernière page qui comporte une telle empreinte.

Un des symboles suivants apparaît sur la dernière image de chaque microfiche, selon le cas: le symbole \rightarrow signifie "A SUIVRE", le symbole ∇ signifie "FIN".

Les cartes, planches, tableaux, etc., peuvent être filmés à des taux de réduction différents. Lorsque le document est trop grand pour être reproduit en un seul cliché, il est filmé à partir de l'angle supérieur gauche, de gauche à droite, et de haut en bas, en prenant le nombre d'images nécessaire. Les diagrammes suivants illustrent la méthode.

2005
32-24
43
46
179
153
157
161
181
191

CATALOGUE OF HANDSOME

HOUSEHOLD FURNITURE,

PLATED WARE, CARRIAGES,

SLEIGHS, HORSES,

SADDLERY, &c. &c.

AT THE RESIDENCE OF

H. JUDAH, ESQ.

St. James Place, Little St. James Street,

On TUESDAY next,

NOVEMBER 12, 1844,

AT ELEVEN O'CLOCK PRECISELY.

KITCHEN.

- 1—Lot Tins
- 2—Small Iron Kettle
- 3— 5 Sauce Pans
- 4— 1 Copper Chaffing Pan
- 5— 3 Large Round Iron Pots, with Covers (2/10 each)
- 6— 2 Small do do do
- 7—Toasting Fork
- 8—Gridirons and Trippet
- 9— 1 Fish Kettle, with Strainer, complete 7/6
- 10—Lot Glass Pickle Jars
- 11—Ice Pail and 4 Cream Shapes
- 12—Jars, with Covers
- 13—Iron Kettle and Frying Pan
- 14—Lot Jars and Bottles
- 15— 1 Coffee Mill 2/1 (3/5)
- 16—Oil Can, Lantern, and Tin Canister
- 17—A Lot Sundries, Tools, Nails, in Knife Box
- 18— 2 Brass and 1 Tin Candlestick

LOT**2**

- 19— 2 pair Snuffers and Trays
- 20— 6 Flat Irons
- 21— 1 Italian Iron
- 22— Lot Shoe Brushes and Black Lead Brushes
- 23— Dust Pan and Fire Pan
- 24— 2 Large Tubs
- 25— 2 Smaller Tubs
- 26— 2 Buckets
- 27— 1 Bucket
- 28— Bake Board and Wire Sieve
- 29— 5 Trays
- + 30— 1 Large Wooden Tray
- + 31— 1 Set Kitchen Cups and Saucers
- + 32— 6 Dishes
- + 33— 17 Flat, 10 Soup, 8 Pudding Plates
- 34— 1 Coffee Percolator
- + 35— 9 Dish Covers \$1.00 (11)
- 36— 1 Tin Kettle
- 37— Coffee Biggin
- 38— Dredging Box, Milk Strainer (2/9)
- 39— Cullender, Funnel, Egg Slice (2/9)
- 40— Handsaw
- 41— Brooms
- 42— Kitchen Knife, Fork, and Spoons
- 43— A Large Kitchen Table \$2 (\$2)
- 44— A Small do do
- 45— Clothes Horse
- 46— 6 Kitchen Chairs 1/each
- 47— A Three Rivers Cooking Stove, complete, with Pots and Tins and Pipes
- 48— Kitchen Carpet

ROOM ADJOINING KITCHEN.

- 49— A Four Post Bedstead
- 50— 1 Hair Mattress
- 51— 1 Straw do
- 52— Wash Stand and Furniture
- 53— 1 Beaudette
- 54— 1 Long Table, with 3 Drawers

DINING ROOM.

- 55— 2 Colored Prints, "Epsom & Goodwin Races"
- 56— 1 Rocking Chair \$1.00
- 57— Handsome Mahogany Sofa
- 58— Copper Coal Scuttle \$3.50
- 59— Green Fender, Brass Mounted \$1.00
- 60— Set Steel Fire Irons \$1.00

LOT**3**

- (5) ✓ 61— 1 pair Bellows
 62—A Plate Warmer
 63—Chimney Ornaments, Shells, &c.
 (25.21) 64— 1 Set 4 Handsome Trays (± 5. 10. 5)
 65— 5 doz Knives and Forks

Plated Ware.

- 66— 2 Handsome Salvers
 67— 2 Largo Plated Forks
 68— 2½ doz Desert Knives and Forks
 69— 1 pair Asparagus Tongs
 70— 4 pair Plated Nut Crackers
 71— 1 doz Table Spoons
 × 72— 1 do Tea Spoons
 73—Fish Knife
 74—Salad Knife and Fork (modern)
 (± 3) 75— 2 Cake Baskets
 (2/0) 76—Tea Service, Teapot, Sugar, Cream, &c. &c.
 77— 2 pair Knife Rests
 78—A Cruet Stand, 7 bottles
 79— 1 Butter Cooler
 80— 2 Bottle Coasters
 81— 1 Wine Strainer
 82— 1 pair Snuffers
 (1/2) ✓ 83— 2 Bed-room Candlesticks \$ 2
 84— 2 Plated Dish Covers, Silver Edged
 85— 1 China Jug
 86— 1 China Tea Set, gilt, complete
 87—A pair Handsome Plated Lamps, with globes, complete
 88— 1 Branch Lamp, bronzed
 89— 2 Mahogany Stands
 (± 5. 5) 90—A Handsome French Clock
 91—15 Cut Claret Glasses
 92—14 Cut Wines
 93—19 do do
 94— 9 Champagne Glasses
 95— 7 Liqueur do
 96—18 Jelly Glasses
 97—12 Custard Glasses
 98— 6 Large Cut Tumblers
 99— 1 dozen Cut Finger Glasses
 100— ½ do Plain do do
 101— 1 pair Wine Coolers
 102— 3 Plain Glass Fruit Dishes
 103— 2 do do Stands
 104— 1 Plain Celery Glass
 105— 1 Cut do do Handsome

LOT**1**

- 106— 7 do Tumblers
 107— 2 Cut Water Jugs
 108— 2 Plain Glass Dishes
 109— 4 Cut Salt Cellars
 110— 5 Preserve Plates
 111— 1 Glass Cream Jug
 112— 2 Pickle Plates
 113— 2 Handsome Claret Jugs
 114— 3 Small Cut Decanters
 115— 1 Large Decanter
 116— 12 Ice Cream Plates
 117— 1 pair Handsome Quart Decanters
 118— 1 do do Pint do
 119— 6 Cut Glass do
 120— 4 do Pint do
 121— 1 Liqueur Stand, 4 bottles
 122— 1 Handsome Cut Sugar Bowl
 123— 1 Butter Cooler and Stand
 124— 2 Papier Machie Trays
 125— A Handsome Dinner Set, white and gold
 126— A Desert Set
 127— 2 Set Damask Curtains } (\$ 2 1/2 = £ 6 - from Mr. Newirth.
 128— 2 do Cornices }
 129— A Breakfast Service, white and gold, incomplete (8/6
 130— 1 Handbell
 131— 2 Handsome Plated Side Dishes
 132— 1 Stone Jug, Plated Cover
 133— Engraving of Washington, in Frame
 134— do of Sir Walter Scott's Monument
 135— 1 China Basket
 136— 3 Handsome China Vases
 137— 2 do Co'd Glass Flower Stands
 138— 2 do Hyacinth Bottles
 139— 2 do Lustres
 140— 1 do Candelabra for Piano Forte
 141— 2 do Ornaments, Flower Baskets
 142— 2 do Vases

OFFICE NEXT TO DINING ROOM.

- 143— Carpet
 144— Tablo
 145— Mahogany Arm Chair
 146— Map of Canada
 147— Two Views Island and City Montreal
 148— Small Hand Mirror

LOT

5

PANTRY.

- 149— 4 Tin Jelly Moulds
- 150— 2 do White do
- 151— 3 Japan Sugar Canisters
- 152— 1 d. Tea do
- 153— 6 Large Stone Jars
- 154— 1 Small Oil Can
- 155— Lot of Bottles, &c.
- 156— A Small Painted Cupboard
- 157— 1 Large Tray

(10/)
mattar 3/5

HALL.

- 158— 2 Handsome Scrapers (6/6)
- 159— 1 Small Matt

6/
2/6

BED ROOM, No. 1.

- 160— A Very Handsome 4 Post Mahogany Bedstead, with Chintz Curtains, complete

(18)

- 161— Feather Bed, Palliase, Hair Mattress

6 rollers & traversin, a 1/10 alt.

- 162— 1 Set Window Curtains, complete

prepaid to post etc. plus

- 163— 1 Handsome Cheval Glass (10)

- 164— 2 Handsome Mahogany Drawers, Pillars

- 165— A Large Easy Chair, Chintz Cover

- 166— A Small Round Table

- 167— 1 Writing Desk

- 168— 2 Chairs

- 169— Wash Stand Furniture, Gilt Stone China 2

- 170— Chimney Ornaments

- + 171— Fender and Fire Irons 1 1/2

- 172— Towel Horse

- 173— Small Looking Glass

- 174— Carpet and Rug

DRESSING ROOM.

- 175— Handsome Mahogany Drawers

- 176— do do Wash Stand

- 177— Stone Gilt Furniture for do

- 178— Large Looking Glass

(\$ 3.25 = 16/3 and B.)

- 179— Small do do

- + 180— Foot Bath

ROOM UP STAIRS.

- 181— Sofa, Chintz Cover 3 1/2 (\$13)

- 182— Large Bedroom Ottoman

- 183— 8 Mahogany Chairs

- 184— 1 Backgammon Board

- 185— 1 Brass Lamp

- 186— 1 Small Table and Cover

- 187— 1 Silk Reel

- 188— A very Large Handsome Bird Cage

- 189— A Large Office Desk, Pigeon Holes

15.00/0 (19)

Lot**0**

- 190—An Office Chair *5.10*
 191—30 inch Single Stove and Pipes
 192— 3 Pictures
 192½—Small Chest Drawers *7.2*
 193—Carpets *2/11*

(\$5.75)

BED ROOM, No. 2.

- 194—Four Post Bedstead *± 2*
 195— 3 Feather Beds, Bolster, &c. *1 inch 6 off*
 196—Hair Mattress, Blankets and Quilts
 198—Window Curtains *30x40*
 199—Toilet Table and Looking Glass *30x40*
 200—Mahogany Wash Stand and Furniture
 201—Large Easy Chair *12x20*
 202—Carpet *1/2 sample*
 203—Mahogany Four Post Bedstead, White Dimity Curtains
 204—Feather Bed
 205—Hair Mattress, Palliasse
 205—Blankets and Quilt *2/5*
 206— 1 Looking Glass
 207— 1 Wash Stand and Furniture
 208—Boot Rack
 209—Hat Box
 210— 2 Carpet Bags
 211—Carpet *1/2 sample*

YARD.

- 212—Set Brushes, Curry Comb, Sponge, &c. *1. 5. 9.*
 213— 1 Hand Cart
 214— 1 Shovel and Stable Fork
 215— 2 Sets Winter Horse Clothing
 216— 3 Saddles, 3 Bridles
 217— 1 Set Single Harness
 218— 1 Set Tandem do
 219— 1 Double Set do
 220— 1 Cart Harness
 221— 1 Snow Sleigh
 222— 2 Buffalo Robes
 223— 1 Handsome Sleigh, with Shafts and Pole, complete, with *± 35*
 Robes and Aprons
 224— 1 Light Dog Cart, with Leather Apron
 225— 1 Wheel Rest for Carriage
 226— 1 Handsome Brougham Carriage, London Built, with Polo
 and Shafts
 227— 4 Brass Winter Bells
 228— 1 London Built Tilbury
 229—A pair Handsome Chesnut Horses, equally quiet in Saddle
 or Harness, perfectly Sound, and Five Years Old *25*

JOHN LEEMING, Auctioneer.

Montreal, November 9, 1844.

