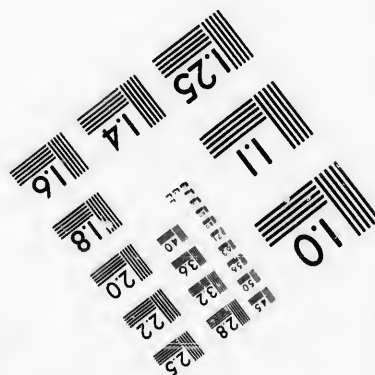
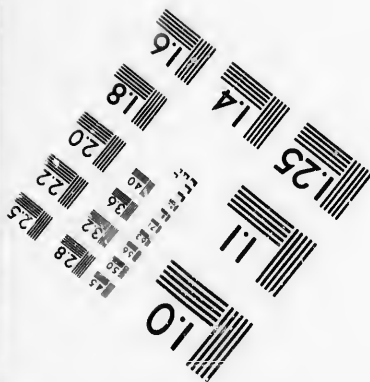
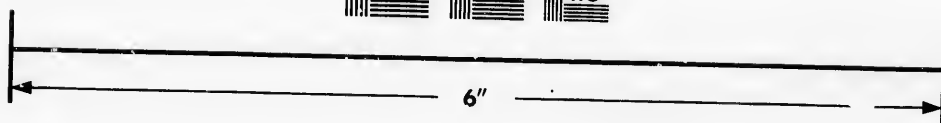
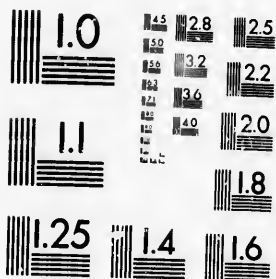


**IMAGE EVALUATION
TEST TARGET (MT-3)**



**Photographic
Sciences
Corporation**

23 WEST MAIN STREET
WEBSTER, N.Y. 14580
(716) 872-4503



**CIHM/ICMH
Microfiche
Series.**

**CIHM/ICMH
Collection de
microfiches.**



Canadian Institute for Historical Microreproductions / Institut canadien de microreproductions historiques



© 1986

Technical and Bibliographic Notes/Notes techniques et bibliographiques

The Institute has attempted to obtain the best original copy available for filming. Features of this copy which may be bibliographically unique, which may alter any of the images in the reproduction, or which may significantly change the usual method of filming, are checked below.

L'Institut a microfilmé le meilleur exemplaire qu'il lui a été possible de se procurer. Les détails de cet exemplaire qui sont peut-être uniques du point de vue bibliographique, qui peuvent modifier une image reproduite, ou qui peuvent exiger une modification dans la méthode normale de filmage sont indiqués ci-dessous.

- | | |
|--|--|
| <input type="checkbox"/> Coloured covers/
Couverture de couleur | <input type="checkbox"/> Coloured pages/
Pages de couleur |
| <input type="checkbox"/> Covers damaged/
Couverture endommagée | <input type="checkbox"/> Pages damaged/
Pages endommagées |
| <input type="checkbox"/> Covers restored and/or laminated/
Couverture restaurée et/ou pelliculée | <input type="checkbox"/> Pages restored and/or laminated/
Pages restaurées et/ou pelliculées |
| <input type="checkbox"/> Cover title missing/
Le titre de couverture manquant | <input type="checkbox"/> Pages discoloured, stained or foxed/
Pages décolorées, tachetées ou piquées |
| <input type="checkbox"/> Coloured maps/
Cartes géographiques en couleur | <input type="checkbox"/> Pages detached/
Pages détachées |
| <input type="checkbox"/> Coloured ink (i.e. other than blue or black)/
Encre de couleur (i.e. autre que bleue ou noire) | <input type="checkbox"/> Showthrough/
Transparence |
| <input type="checkbox"/> Coloured plates and/or illustrations/
Planches et/ou illustrations en couleur | <input type="checkbox"/> Quality of print varies/
Qualité inégale de l'impression |
| <input type="checkbox"/> Bound with other material/
Relié avec d'autres documents | <input type="checkbox"/> Includes supplementary material/
Comprend du matériel supplémentaire |
| <input type="checkbox"/> Tight binding may cause shadows or distortion
along interior margin/
La reliure serrée peut causer de l'ombre ou de la
distorsion le long de la marge intérieure | <input type="checkbox"/> Only edition available/
Seule édition disponible |
| <input type="checkbox"/> Blank leaves added during restoration may
appear within the text. Whenever possible, these
have been omitted from filming/
Il se peut que certaines pages blanches ajoutées
lors d'une restauration apparaissent dans le texte,
mais, lorsque cela était possible, ces pages n'ont
pas été filmées. | <input type="checkbox"/> Pages wholly or partially obscured by errata
slips, tissues, etc., have been refilmed to
ensure the best possible image/
Les pages totalement ou partiellement
obscurcies par un feuillet d'errata, une pelure,
etc., ont été filmées à nouveau de façon à
obtenir la meilleure image possible. |
- Additional comments: [Printed ephemera] [4] p. This copy is a photoreproduction.
Commentaires supplémentaires:

This item is filmed at the reduction ratio checked below/
Ce document est filmé au taux de réduction indiqué ci-dessous.

10X	12X	14X	16X	18X	20X	22X	24X	26X	28X	30X	32X
								✓			

The copy filmed here has been reproduced thanks to the generosity of:

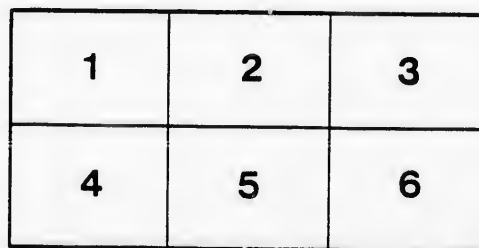
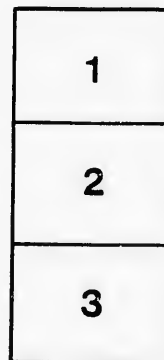
D. B. Weldon Library
University of Western Ontario
(Regional History Room)

The images appearing here are the best quality possible considering the condition and legibility of the original copy and in keeping with the filming contract specifications.

Original copies in printed paper covers are filmed beginning with the front cover and ending on the last page with a printed or illustrated impression, or the back cover when appropriate. All other original copies are filmed beginning on the first page with a printed or illustrated impression, and ending on the last page with a printed or illustrated impression.

The last recorded frame on each microfiche shall contain the symbol \rightarrow (meaning "CONTINUED"), or the symbol ∇ (meaning "END"), whichever applies.

Maps, plates, charts, etc., may be filmed at different reduction ratios. Those too large to be entirely included in one exposure are filmed beginning in the upper left hand corner, left to right and top to bottom, as many frames as required. The following diagrams illustrate the method:



L'exemplaire filmé fut reproduit grâce à la générosité de:

D. B. Weldon Library
University of Western Ontario
(Regional History Room)

Les images suivantes ont été reproduites avec le plus grand soin, compte tenu de la condition et de la netteté de l'exemplaire filmé, et en conformité avec les conditions du contrat de filmage.

Les exemplaires originaux dont la couverture en papier est imprimée sont filmés en commençant par le premier plat et en terminant soit par la dernière page qui comporte une empreinte d'impression ou d'illustration, soit par le second plat, selon le cas. Tous les autres exemplaires originaux sont filmés en commençant par la première page qui comporte une empreinte d'impression ou d'illustration et en terminant par la dernière page qui comporte une telle empreinte.

Un des symboles suivants apparaîtra sur la dernière image de chaque microfiche, selon le cas: le symbole \rightarrow signifie "A SUIVRE", le symbole ∇ signifie "FIN".

Les cartes, planches, tableaux, etc., peuvent être filmés à des taux de réduction différents. Lorsque le document est trop grand pour être reproduit en un seul cliché, il est filmé à partir de l'angle supérieur gauche, de gauche à droite, et de haut en bas, en prenant le nombre d'images nécessaire. Les diagrammes suivants illustrent la méthode.

ire
détails
es du
modifier
er une
filmage

es

errata
to

pelure,
on à



32X

Grand Opera House

COLLINGWOOD, APRIL 19, 1892

BABY CARRIAGES

Window Shades, Cornice Poles,
Brass Vestibule Rods. Picture Frames.
Room Moulding. Brass Curtain Chains.

At **CHELLEW'S**
FURNITURE WAREHOUSES.

BUY YOUR
--SEEDS--
FOR

SPRING PLANTING
FROM

A. & H. FOREMAN

**SMOKE A
ST. ELMO
CIGAR**

Nettleton, Lindsay & Co.

—Wholesale Importers—

Wines, Liquors & Cigars
Ale & Porter Bottlers.

Spring Cleaning

Get Your **Paints & Varnish**
Stove Polish **Stove Brushes**
Shoe Polish **Shoe Brushes**
Whitewash Brushes

And General Hardware Small Lines at

Oocomore & Co.

FOR THE LADIES

Because 1892 is Leap Year, don't imagine that every young man wants you to pop the question to him. If you want to gain the esteem of a sensible man be sensible yourself, have an opinion of your own and maintain it by well chosen arguments.

If you want to be admired on your wedding day, get your wedding outfit at the Glasgow House—it has by far the loveliest goods in town.

These Ladies who get their goods at the Glasgow House, are universally admitted to be the most tastefully and best dressed ladies in town.

If you see a gentleman always neat and fashionable, you may be sure he buys his outfit at the Glasgow House, Collingwood.

BERNARD GALLERY
Proprietor of the Georgian Bay Park.

**Pure Drugs &
Chemicals**

Choicest
Lines of **Perfumery** in Town.

A. H. JOHNSON

Chemist & Druggist. Collingwood

COLLINGWOOD ORPHEUS

MINSTRELS

ORCHESTRA

W. LEGGATT, LEADER.

1ST VIOLINS—T. Bowie, C. W. Tobey, J. McCaig, J. H. Duncan, and J. L. Cox.
2ND VIOLINS—J. R. Hamilton & F. T. Rounthwaite

P. C. Findlay—Clarinet.
S. Hewitt—Cornet.
E. S. Brown—Trumpbone.
Robt. McQuade—D. Bass.
W. Leggatt—Cello.

Miss Minnie Martin—Accompanist.

PERSONEL

1ST TENORS—T. Mulvihill and J. S. Porter.

2ND TENORS—A. H. Johnson, A. B. Pratt, E. A. Walte and E. H. Telfer.

Air—J. Birnie, Jr., W. J. Slean, T. C. Brown, G. W. Watts, J. G. Noble and M. Atkinson.

1ST BASSES—T. H. White, W. H. Johnstone, C. G. Nourse and G. Mickler.

2ND BASSES—A. D. Knight, F. R. Mackenzie, R. B. Burt, M. P. Byrnes, W. J. James, T. Watts and W. C. Playter.

INTERLOCUTOR—J. W. BRADY.

BONES	TAMBOURINES
M. Atkinson	A. H. Johnson
F. R. Mackenzie	E. H. Telfer.

PAGE—Master Chas. Collins.

W. LEGGATT—Musical Director.
M. ATKINSON—Stage Manager.
W. J. SLEAN—Treasurer.

Admission, 25c., 35c. & 50c.

Plan of Hall at Johnson's Drug Store.

Doors open at 7.30. Curtain rises at 8 sharp.

The Piano used on this occasion is from the factory of the Uxbridge Piano Co., and supplied by H. Lamont, Collingwood.

Collingwood Enterprise Print

**For Evening Gloves
Hosiery, Slippers
& Neckwear
Go to
T. Long & Brother's**

A. HEUSER
—AGENT—

Canadian Express Co.

G. N. W. Telegraph Co.

For all Classes of Insurance.

Send Your Money by Express Order. The system is the Cheapest, Safest and Best.

OFFICE in T. Long & Bro.'s Block, Hurontario Street.

GLOBE HOTEL

JOHN ROWLAND, PROPRIETOR

The Bar is Noted for its Pure

Wines, Liquors & Cigars

SEE!

—The Finest Assortment of—

**Perfumes, Toilet Articles
Sponges, Etc.**

—in town, at—

DOUGLASS' DRUG STORE

NOTE—Physicians' Prescriptions accurately dispensed. The purest drugs always in stock.

G. STEPHENS & CO.

—Keep the Best Stock of—

Dry Goods, Boots & Shoes

Carpets, Wall Papers

Gents Furnishings

House Furnishings

Groceries, Crockery, Glassware & Provisions in Collingwood.

For Advertising Space

In This Programme

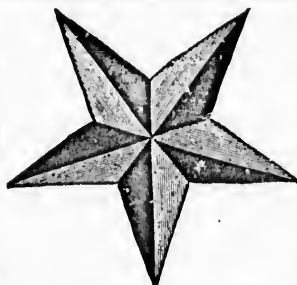
Apply to the **ENTERPRISE-MESSANGER**
STEAM JOB OFFICE

NOTICE—The ENTERPRISE has the sole and exclusive right, secured by contract, to print all programmes for this House.

SEASONABLE

Nothing in Town compares with our Exhibit of

WALL PAPERS
WINDOW SHADES
BABY CARRIAGES



GOODS

Close Buyers will find the

STAR BOOK STORE

Alive to their Wants.

WE SELL CHEAP.

R. Creelman

Union Hall!

BOYS' SUITS!

ALL NEW

GOOD AND CHEAP

W. J. Frame

Programme

SELECTIONS BY THE ORCHESTRA.

Beginning at 7.30.

P. & O. Polka. Just Once More. Galop.
Les Roses Waltz.
Flick Flock. Galop. A Stairy Night.

PART I

1. INVISIBLE CHORUS—
In the Evening by the Moonlight
The Company

2. OPENING OVERTURE—Orchestra.
Tres Gai

3. OPENING CHORUS—
We Rock Away
The Company

4. SONG—
If the Waters Could Speak as they Flow
A. D. Knight.

5. END SONG—
Four Little Curly Headed Coons.
E. H. Telfer

6. SONG—
Pretty Little Dark Blue Eyes.
T. C. Brown

7. END SONG—
Whoa Mule.
A. H. Johnson

8. SONG—
Pretty as a Pink.
T. H. White

9. END SONG—
Selected.
F. R Mackenzie

10. OCTETTE—Gather the Beautiful.
Messrs. Mulvihill, Brown, Birnie,
Slean, White, Johnson, Knight &
MacKenzie.

11. END SONG—Susan Brown.
M. Atkinson

12. SONG—
Farewell, Annie Derling.
T. Mulvihill

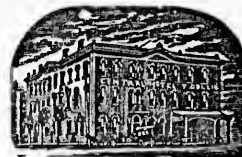
Concluding with
13. The March of the Colored 400 by
the whole Company.

INTERMISSION.

Selections by the Orchestra:
Jubilee Lancers & Belphegor March.

Grand Central HOTEL

HURONTARIO STREET



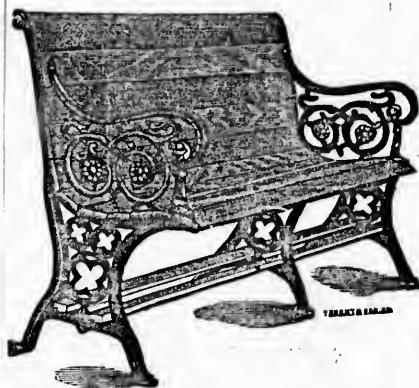
Only First Class Hotel in Town.

THOS. COLLINS PROPRIETOR

— THE NOBBIEST —
SPRING FOOT WEAR
— IN TOWN, AT —
THE PALACE SHOE STORE

COLLINGWOOD
Planing Mills.

The Leading Place for
 Doors, Sash, Blinds,
 Church, School
 & Hall Furniture



Our Prices are as low as is consistent with
 First Class Work.

WILSON BROS.

158 to 166, Hurontario St. Telephone No. 3.

—GO TO—
Stone & Mathieson's

—FOR—
Pure Wines and Whiskies

—Fine Imported & Domestic—

Ales & Porters

Shop—Next to Town Hall. Collingwood

Kelly Concert Co'y
 Friday Eve., May 20

Programme

PART II

—GRAND—

Musical Extravaganza

—INTRODUCING—

T. Mulvihill, Vocalist
 W. J. James, Banjoist
 F.R. Mackenzie & W.B. Pratt, Guitarists
 E.H. Telfer & R. Watts, Harmonicas
 M. Atkinson—Bones, &c.

Cello & Piano Duet—Cavatina—Raff
 Miss M. Martin & W. Leggatt.

Skipping the Light Fantastic—
 JIMMIE MAC.

PROF. WRIGHT—
 The Celebrated Indian Club Swinger

DR. JENN—Barjo Selections

A Ghost Story, by the Spectres of the Co.

God Save the Queen.

NOTICE

AFTER the Orpheus Concert
 make your way to **Begg & Co.**
 The Greatest Bargains on earth
 in every line.

BEGG & CO.

LANGTON
The City Grocer

—HAS AN—



TO BUSINESS

BY AIMING TO KEEP THE

The Best Groceries

—AND THE—

Highest Grade of Spices

Fearman's Lard & Meats

FRAGRANT TEAS & COFFEES

FRUITS & CONFECTIONERY.

GOOD EVENING !

How do you like the Play ?

By the way ! Have you seen

A. G. SMITH & CO.'S

—Great Display of New—

SPRING GOODS

Lovely effects in Dress Goods. New Prints and
 Satens. Ladies' & Children's Fine Shoes
 a Specialty. We are offering some
 Wonderful Bargains.

A. G. SMITH & CO.

Everything Bright, Cheery and Attractive.

Not the Greatest Show on Earth!

— BUT THE FINEST DISPLAY OF —

WALL & CEILING DECORATIONS

EVER OPENED IN TOWN.

We show over 15,000 Rolls of the choicest designs and colorings from 5 of the leading Canadian and American Factories.

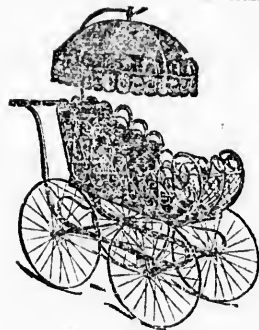
As we give this Department our personal attention we claim we can in every case please you and our prices are right.

IN WINDOW SHADES

We lead. You have only to see our 60 and 65c. lines, beautifully decorated, mounted all ready to hang. To admit it We fill the bill.

Baby

Our reputation as the leading dealer in these useful articles is too well known to require comment. It is we believe sufficient to say our stock is above the average.



Carriages

We still retain Sole Agency for the Celebrated "WHITNEY" the lightest running carriage manufactured.

Our New \$5.00 Rattan and \$6.50 Bamboo Carriage beats our previous record.

JUST ONE WORD MORE.

CURTAIN POLES

When you require them come and see us, we can show you something no one else can get, and at lowest prices. Just think, 33 cents, complete. Equal to any 75c. Goods you ever purchased.

E. S. BROWN

(Over)

Book & Fancy Goods

