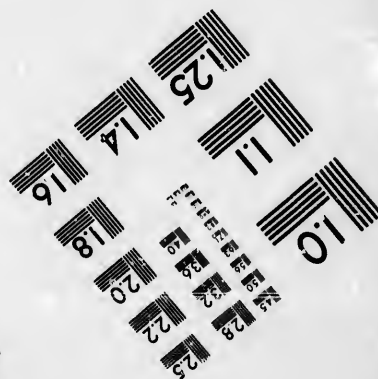
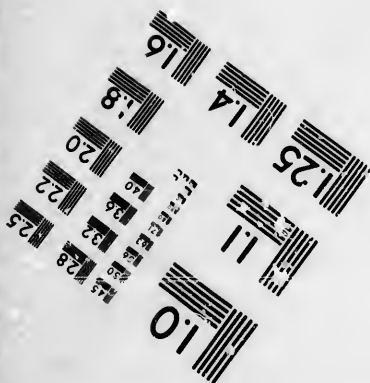
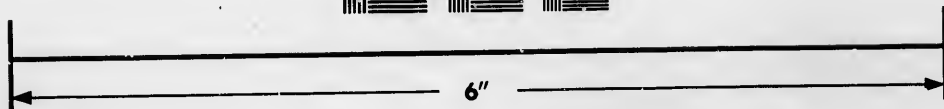
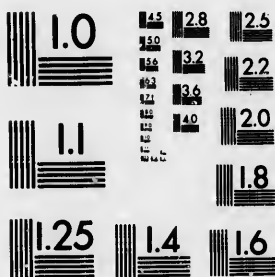


**IMAGE EVALUATION  
TEST TARGET (MT-3)**



**Photographic  
Sciences  
Corporation**

23 WEST MAIN STREET  
WEBSTER, N.Y. 14580  
(716) 872-4503

**CIHM/ICMH  
Microfiche  
Series.**

**CIHM/ICMH  
Collection de  
microfiches.**



**Canadian Institute for Historical Microreproductions / Institut canadien de microreproductions historiques**

**© 1985**

Technical and Bibliographic Notes/Notes techniques et bibliographiques

The institute has attempted to obtain the best original copy available for filming. Features of this copy which may be bibliographically unique, which may alter any of the images in the reproduction, or which may significantly change the usual method of filming, are checked below.

L'Institut a microfilmé le meilleur exemplaire qu'il lui a été possible de se procurer. Les détails de cet exemplaire qui sont peut-être uniques du point de vue bibliographique, qui peuvent modifier une image reproduite, ou qui peuvent exiger une modification dans la méthode normale de filmage sont indiqués ci-dessous.

- |  |  |
|--|--|
| <input type="checkbox"/> Coloured covers/<br>Couverture de couleur   | <input type="checkbox"/> Coloured pages/<br>Pages de couleur   |
| <input type="checkbox"/> Covers damaged/<br>Couverture endommagée  | <input type="checkbox"/> Pages damaged/<br>Pages endommagées   |
| <input type="checkbox"/> Covers restored and/or laminated/<br>Couverture restaurée et/ou pelliculée  | <input type="checkbox"/> Pages restored and/or laminated/<br>Pages restaurées et/ou pelliculées  |
| <input type="checkbox"/> Cover title missing/<br>Le titre de couverture manque   | <input checked="" type="checkbox"/> Pages discoloured, stained or foxed/<br>Pages décolorées, tachetées ou piquées   |
| <input type="checkbox"/> Coloured maps/<br>Cartes géographiques en couleur   | <input type="checkbox"/> Pages detached/<br>Pages détachées  |
| <input checked="" type="checkbox"/> Coloured ink (i.e. other than blue or black)/<br>Encre de couleur (i.e. autre que bleue ou noire)  | <input checked="" type="checkbox"/> Showthrough/<br>Transparence   |
| <input type="checkbox"/> Coloured plates and/or illustrations/<br>Planches et/ou illustrations en couleur  | <input type="checkbox"/> Quality of print varies/<br>Qualité inégale de l'impression   |
| <input type="checkbox"/> Bound with other material/<br>Relié avec d'autres documents   | <input type="checkbox"/> Includes supplementary material/<br>Comprend du matériel supplémentaire   |
| <input type="checkbox"/> Tight binding may cause shadows or distortion<br>along interior margin/<br>La reliure serrée peut causer de l'ombre ou de la<br>distorsion le long de la marge intérieure   | <input type="checkbox"/> Only edition available/<br>Seule édition disponible   |
| <input type="checkbox"/> Blank leaves added during restoration may<br>appear within the text. Whenever possible, these<br>have been omitted from filming/<br>Il se peut que certaines pages blanches ajoutées<br>lors d'une restauration apparaissent dans le texte,<br>mais, lorsque cela était possible, ces pages n'ont<br>pas été filmées. | <input type="checkbox"/> Pages wholly or partially obscured by errata<br>slips, tissues, etc., have been refilmed to<br>ensure the best possible image/<br>Les pages totalement ou partiellement<br>obscurcies par un feuillet d'errata, une pelure,<br>etc., ont été filmées à nouveau de façon à<br>obtenir la meilleure image possible. |
| <input checked="" type="checkbox"/> Additional comments: [Printed ephemera] [4] p.<br>Commentaires supplémentaires:  |  |

This item is filmed at the reduction ratio checked below/  
Ce document est filmé au taux de réduction indiqué ci-dessous.

10X	14X	18X	22X	26X	30X
<input type="checkbox"/>	<input type="checkbox"/>	<input checked="" type="checkbox"/>	<input type="checkbox"/>	<input type="checkbox"/>	<input type="checkbox"/>
12X	16X	20X	24X	28X	32X

The copy filmed here has been reproduced thanks to the generosity of:

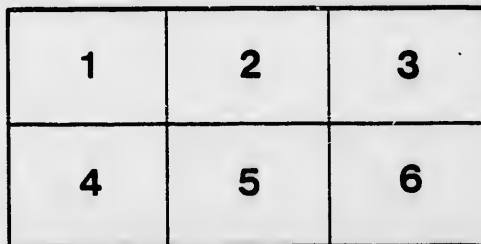
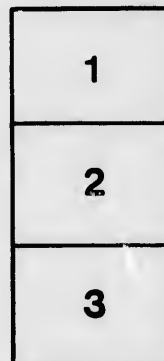
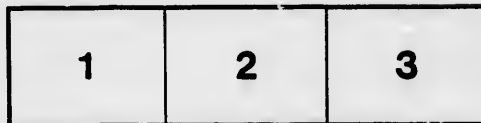
D. B. Weldon Library  
University of Western Ontario  
(Regional History Room)

The images appearing here are the best quality possible considering the condition and legibility of the original copy and in keeping with the filming contract specifications.

Original copies in printed paper covers are filmed beginning with the front cover and ending on the last page with a printed or illustrated impression, or the back cover when appropriate. All other original copies are filmed beginning on the first page with a printed or illustrated impression, and ending on the last page with a printed or illustrated impression.

The last recorded frame on each microfiche shall contain the symbol  $\rightarrow$  (meaning "CONTINUED"), or the symbol  $\nabla$  (meaning "END"), whichever applies.

Maps, plates, charts, etc., may be filmed at different reduction ratios. Those too large to be entirely included in one exposure are filmed beginning in the upper left hand corner, left to right and top to bottom, as many frames as required. The following diagrams illustrate the method:



L'exemplaire filmé fut reproduit grâce à la générosité de:

D. B. Weldon Library  
University of Western Ontario  
(Regional History Room)

Les images suivantes ont été reproduites avec le plus grand soin, compte tenu de la condition et de la netteté de l'exemplaire filmé, et en conformité avec les conditions du contrat de filmage.

Les exemplaires originaux dont la couverture en papier est imprimée sont filmés en commençant par le premier plat et en terminant soit par la dernière page qui comporte une empreinte d'impression ou d'illustration, soit par le second plat, selon le cas. Tous les autres exemplaires originaux sont filmés en commençant par la première page qui comporte une empreinte d'impression ou d'illustration et en terminant par la dernière page qui comporte une telle empreinte.

Un des symboles suivants apparaîtra sur la dernière image de chaque microfiche, selon le cas: le symbole  $\rightarrow$  signifie "A SUIVRE", le symbole  $\nabla$  signifie "FIN".

Les cartes, planches, tableaux, etc., peuvent être filmés à des taux de réduction différents. Lorsque le document est trop grand pour être reproduit en un seul cliché, il est filmé à partir de l'angle supérieur gauche, de gauche à droite, et de haut en bas, en prenant le nombre d'images nécessaire. Les diagrammes suivants illustrent la méthode.

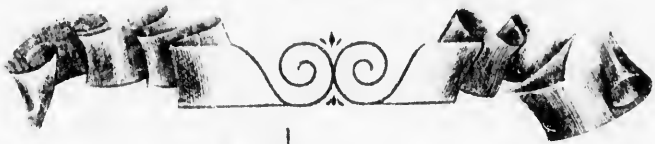
rrrata  
to

peiture,  
n à

32X

Advice of  
**OCEAN QUOTATIONS**

FROM MONTREAL.



Presented  
with the Compliments of  
THE

**GRAND  
TRUNK  
RAILWAY  
SYSTEM**

CHAS M HAYS  
General Manager

JNO W LOUD  
Frt Traffic Manager

JOHN PULLEN  
Genl Freight Agent

A F READ  
Foreign Freight Agent

MONTREAL  
QUE

THE GREAT CANADIAN  
HIGHWAY TO EUROPE.

Subject to Change Without Notice.

Weekly Advice of Current Ocean Rates and Intended Sailings

(B.—2500.)

DESCRIPTION.		Liverpool	Glasgow	London	Bristol	Belfast	Leith	Aberdeen
Flour, Oilcake, Starch, Sugar, Split Peas & Oatmeal, in bags.....	2240 lbs	12/6	13/9	15/	15/	15/6	17/6	20/
Flake Oatmeal, Rolled Oats, Middlings...	"	17/6	18/9	20/	22/6	20/	22/	25/
Lard, Beef Pork, Tallow and Oleo in barrels or tierces.....	"	17/6	20/	20/	25/	22/6	22/6	25/
Lard in pails and other small packages...	"	22/6	25/	25/	30/	27/6	27/6	30/
Bacon and Boxed Meats, Canned Meats and Goods.....	"	17/6	20/	20/	25/	22/6	22/6	25/
Cheese, in boxes.....	"	25/	25/	25/	30/	27/6	25/	30/
Butter, in cases and kegs.....	"	30/	30/	30/	35/	32/6	30/	35/
Seeds, timothy and clover, in bags.....	"	17/6	20/	22/6	25/	20/	25/	25/
" blue and other grass, in bags.....	"	35/	40/	40/	40/	40/	40/	40/
Leather, black and other, in heavy bales and cases.....	"	22/6	25/	25/	27/6	27/6	25/	25/
Leather, rough sole, and split, in rolls and bales.....	"	35/	40/	40/	40/	40/	40/	40/
Pot and Pearl Ash, No. 1 Asbestos, and Mica.....	"	12/6	13/9	15/	15/			
Maple and Elm Blocks and Squares.....	"	12/6	13/9	15/	16/3	17/6	20/	20/
Heavy Lumber—Oak, Elm, Birch, (chair stock, &c.) & Maple.....	"	17/6	18/9	20/	22/6	20/		
Weight (coarse).....	"	12/6	13/9	15/	15/	15/	17/6	20/
Radiators and similar Castings.....	"	12/6	13/9	15/	15/	15/	17/6	20/
Seed Peas and Beans, in shipper's bags..	"	13/9	15/	17/6	18/9	15/	17/6	20/
Measurement, (coarse), see list on margin	40 cb. ft	12/6	13/9	15/	15/	15/	17/6	20/
" (fine) " "	"	20/	20/	20/	20/	20/	25/	30/
Woodenware, &c., see list on margin.....	"	12/6	13/9	15/	17/6	15/	17/6	20/
Furniture, &c., " " " " " " " "	"	12/6	13/9	15/	17/6	15/	17/6	20/
Implements, &c., " " " " " " " "	"	12/6	13/9	15/	17/6	15/	17/6	20/
Eggs, in cases or barrels.....	"	15/	17/6	17/6	17/6		17/6	20/
Apples, Flour.....	Barrel	3/	3/	3/	3/	3/	3/	3/6
" and other Fruit, in boxes.....	40 cb. ft	15/	17/6	17/6	17/6		17/6	20/
Smalls, of less than 1/8 ton wt. or msmt....	each	10/	10/	10/	10/	15/	10/	10/
Grain, in shipper's bags.....	Quart'r	3/	3/	3/3	3/6	2/9		

These rates are for general information only, and are subject to change at CONTRACTS MUST BE REPORTED BY WIRE AND CONFIRMATION OBTAINED BEFORE TO BE PROMPT SHIPMENT, OR SHIPPED WITHIN TEN DAYS AFTER DATE OF CO. The above rates are exchanged on basis of \$4.80 to £1 stg., excepting that rate must be collected on basis of \$4.86 to the pound sterling.

If freight is offered other than specified above, on which Steamship connect their option, prompt replies will be facilitated by giving, when applying for rate It is understood that when reporting Sack Flour engagements, a carload is It is also important that Shipper's name be given for every engagement ma

# GNORRANK RAILWAY SYSTEM.

PRINCIPAL FREIGHT AGENTS' OFFICE,

MONTRÉAL.

MONTRÉAL.

No Primage via Montreal.

and Intended Sailings, Week Ending..... May 26th,

Reg. 97-900.

Port of Origin	Belfast	Leith	Aberdeen	Dublin	Manchester	Cardiff	Hamburg	Antwerp	Bordeaux	Havre.	Goods
	15/6	17/6	20/	18/	14/	15/	18c	15/			WOODENWARE:— Brooms and Whisks. Cooperage Stock. Doors, moldings and joiner's work Handles and Poles. Wood Rims, pulleys and blocks.
	20/	22/	25/	22/6	20/	18/9	24c	18/9			
	22/6	22/6	25/	25/	18/9	25/	24c	20/			FURNITURE:— Furniture in rough and in white. Mattresses. Organs. Refrigerators. School Furniture, desks, seats, &c.
	27/6	27/6	30/	30/	23/9	30/	27c	25/			IMPLEMENTS.— Agricultural Implements. Agricultural machinery of not over 3000 lbs. per piece or package. Cultivators in cases. Lawn Mowers. Plow castings, beams and repairs.
	22/6	22/6	25/	25	18/9	25/	24c	20/			Sewing Machines. Vehicles—materials and parts. Windmills. Washing Machines. Wringers and Stands. Woodworking machinery.
	27/6	25/	30/	30/	27/6	30/	40c	25/			MEASUREMENT (COARSE):— Animal Heads, &c. Bicycles, &c. Canoes and Boats. Harness. Shoes and Boots. Skewers Emery Stone in pkgs. Breakfast Foods.
	32/6	30/	35/	35/	32/6	35/	40c	30/			MEASUREMENT (FINE):— Books and Pictures. Pianos and Stools. Wearing Apparel. Dry Goods, Cottons, &c. Skins in Bales. Household Effects.
	20/	25/	25/	22/6	20/	25/	24c	22/6			GRAIN IN SHIPPERS BAGS:— Oats per 320 lbs.; Barley, Buckwheat and Flax, seed per 400 lbs.; Maize, Wheat, Rye and Peas per 480 lbs.
	40/	40/	40/	45/	40/	40/	45c	35/			
	27/6	25/	30/	30/	27/6	30/	40c	25/			
	32/6	30/	35/	35/	32/6	35/	40c	30/			
	20/	25/	25/	22/6	20/	25/	24c	22/6			
	40/	40/	40/	45/	37/6	40/	40c	35/			
	27/6	25/	25/	30/	25/	27/5	40c	22/6			
	40/	40/	40/	45/	40/	40/	45c	35/			
	17/6	20/	20/	18/9	13/9	16/3	18c	15/			
	20/			22/6	20/	22/6	22c	20/			
	15/	17/6	20/	17/6	13/9	15/	18c	15/			
	15/	17/6	20/	17/6	13/9	15/	18c	15/			
	15/	17/6	20/	17/6	15/	18/9	18c	15/			
	15/	17/6	20/	17/6	12/6	15/	17/6	13/9			
	20/	25/	30/	25/	20/	20/	20/	20/			
	15/	17/6	20/	17/6	12/6	17/6	17/6	13/9			
	15/	17/6	20/	17/6	12/6	17/6	17/6	13/9			
	15/	17/6	20/	17/6	12/6	17/6	17/6	13/9			
		17/6	20/		15/	17/6	20/	15/			
	3/	3/	3/6	3/6	3/	3/	3/6	3/			
		17/6	20/	15/	15/	15/	18c	15/			
	15/	10/	10/	15/	10/	10/	15/	10/			
	2/9			3/	3/	3/3	3/6	3/			

are subject to change at any time without notice; it is therefore important that ALL INFORMATION OBTAINED BEFORE CLOSING WITH SHIPPERS, AND UNLESS SPECIFICALLY STATED IS AFTER DATE OF CONTRACT FROM THE WEST.

to 1 stg., excepting that when freight is prepaid, the ocean proportion of the through

merchandise, in which Steamship connections are accustomed to quote a weight or measurement rate at

time, when applying for rate, the relative weight and measurement of the merchandise.

engagements, a carload is considered 25,000 lbs.

for every engagement made.

# SAILINGS FROM MONTREAL.

## TO LIVERPOOL.

POMERANIAN.....	ALLAN LINE.....	May 22
LUSITANIA .....	ELDER DEMPSTER LINE ..	" 25
TUNISIAN (Cold Storage)...	ALLAN LINE .....	" 26
ROMAN .....	DOMINION LINE.....	" 30
LAKE CHAMPLAIN .....	ELDER DEMPSTER LINE.....	June 1
NUMIDIAN (Cold Storage) ..	ALLAN LINE .....	" 2
VANCOUVER (Cold Storage).	DOMINION LINE .....	" 2

## TO GLASGOW.

LAKONIA (Cold Storage)...	DONALDSON LINE .....	May 24
GRECIAN ..	ALLAN LINE.....	" 29
AMARYNTHIA .....	DONALDSON LINE.....	" 30
BUENOS AYREAN.....	ALLAN LINE .....	June 5
TRITONIA.....	DONALDSON LINE.....	" 6

## TO LONDON.

FREMONA .....	THOMSON LINE.....	May 20
RIBSTON (Chartered).....	THOMSON LINE .....	" 26
ROSARIAN .....	ALLAN LINE.....	June 2
KILDONA ..	THOMSON LINE.....	" 8

## TO BRISTOL.

YOLA.....	DOMINION ELDER DEMPSTER LINE... May 24
MONTOCK.....	DOMINION ELDER DEMPSTER LINE... June 3

## TO MANCHESTER.

MANCHESTER CORPORATION. ..	MANCHESTER LINERS.....	May 26
MANCHESTER IMPORTER.....	MANCHESTER LINERS .....	" 30
MANCHESTER TRADER (Cd Stor.)	MANCHESTER LINERS.....	June 5

## TO BELFAST.

TORR HEAD.....	HEAD LINE .....	May 24
RATHLIN HEAD.....	HEAD LINE .....	June 4

## TO DUBLIN.

MALIN HEAD.. ..	HEAD LINE.....	May 22
INSHOWEN HEAD.....	HEAD LINE.....	" 31

## TO ANTWERP.

ASSYRIAN.....	LEYLAND LINE.....	May 22
SYLVIANA.....	FURNESS LINE ..	" 30
ALMERIAN.....	LEYLAND LINE.....	June 5
EARLSWOOD.....	FURNESS LINE.....	" 17

## TO HAMBURG.

WESTPHALIA .....	H.A.P. LINE.....	May 23
TEUTONIA.....	H.A.P. LINE.....	June 2

## TO LEITH.

KONG HAAKON (chartered).	THOMSON LINE.....	May 25
--------------------------	-------------------	--------

## TO ABERDEEN.

ESCALONA .....	THOMPSON LINE.....	May 28
----------------	--------------------	--------

## TO CARDIFF.

LARNE.....	LORD LINE.....	May 22
LORD IVEIGH.....	LORD LINE.....	June 10

## TO HAVRE AND BORDEAUX.

MONTBLANC.....	FRANCO CANADIENNE LINE.....	May 23
----------------	-----------------------------	--------

## TO SUMMERSIDE, CHARLOTTETOWN, NORTH & SOUTH SYDNEY, C.B. & ST. JOHNS, Nfld.

GREETLANDS.....	DOBELL LINE.....	May 23
CACOUNA.....	BLACK DIAMOND LINE.....	" 24
POLINO.....	DOBELL LINE.....	" 26
BONAVISTA.....	BLACK DIAMOND LINE.....	" 31



