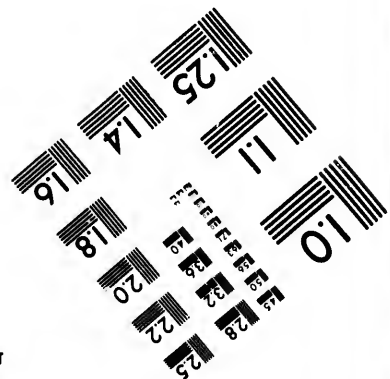
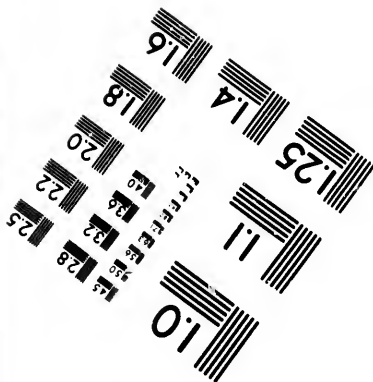
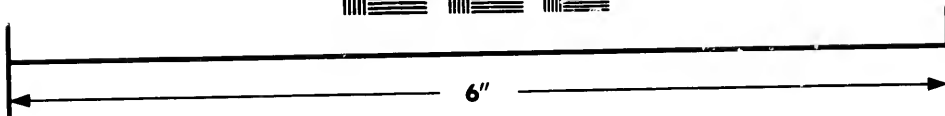
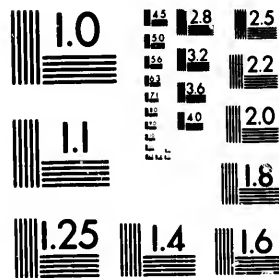


**IMAGE EVALUATION
TEST TARGET (MT-3)**



**Photographic
Sciences
Corporation**

23 WEST MAIN STREET
WEBSTER, N.Y. 14580
(716) 872-4503

15 28 25
18 32 22
20
18

**CIHM/ICMH
Microfiche
Series.**

**CIHM/ICMH
Collection de
microfiches.**



Canadian Institute for Historical Microreproductions / Institut canadien de microreproductions historiques

10
15
18

© 1982

Technical and Bibliographic Notes/Notes techniques et bibliographiques

The Institute has attempted to obtain the best original copy available for filming. Features of this copy which may be bibliographically unique, which may alter any of the images in the reproduction, or which may significantly change the usual method of filming, are checked below.

L'Institut a microfilmé le meilleur exemplaire qu'il lui a été possible de se procurer. Les détails de cet exemplaire qui sont peut-être uniques du point de vue bibliographique, qui peuvent modifier une image reproduite, ou qui peuvent exiger une modification dans la méthode normale de filmage sont indiqués ci-dessous.

- Coloured covers/
Couverture de couleur
- Covers damaged/
Couverture endommagée
- Covers restored and/or laminated/
Couverture restaurée et/ou pelliculée
- Cover title missing/
Le titre de couverture manque
- Coloured maps/
Cartes géographiques en couleur
- Coloured ink (i.e. other than blue or black)/
Encre de couleur (i.e. autre que bleue ou noire)
- Coloured plates and/or illustrations/
Planches et/ou illustrations en couleur
- Bound with other material/
Relié avec d'autres documents
- Tight binding may cause shadows or distortion along interior margin/
La reliure serrée peut causer de l'ombre ou de la distorsion le long de la marge intérieure
- Blank leaves added during restoration may appear within the text. Whenever possible, these have been omitted from filming/
Il se peut que certaines pages blanches ajoutées lors d'une restauration apparaissent dans le texte, mais, lorsque cela était possible, ces pages n'ont pas été filmées.
- Additional comments:
Commentaires supplémentaires:

- Coloured pages/
Pages de couleur
- Pages damaged/
Pages endommagées
- Pages restored and/or laminated/
Pages restaurées et/ou pelliculées
- Pages discoloured, stained or foxed/
Pages décolorées, tachetées ou piquées
- Pages detached/
Pages détachées
- Showthrough/
Transparence
- Quality of print varies/
Qualité inégale de l'impression
- Includes supplementary material/
Comprend du matériel supplémentaire
- Only edition available/
Seule édition disponible
- Pages wholly or partially obscured by errata slips, tissues, etc., have been refilmed to ensure the best possible image/
Les pages totalement ou partiellement obscurcies par un feuillet d'errata, une pelure, etc., ont été filmées à nouveau de façon à obtenir la meilleure image possible.

This item is filmed at the reduction ratio checked below/
Ce document est filmé au taux de réduction indiqué ci-dessous.

10X	12X	14X	16X	18X	20X	22X	24X	26X	28X	30X	32X
							✓				

The copy filmed here has been reproduced thanks to the generosity of:

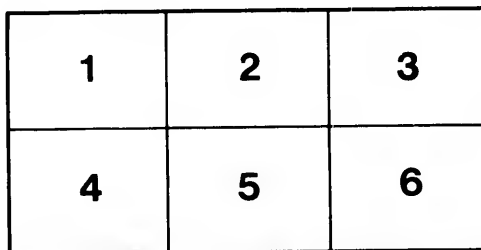
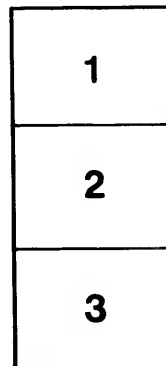
University of Toronto
ARCHIVES

The images appearing here are the best quality possible considering the condition and legibility of the original copy and in keeping with the filming contract specifications.

Original copies in printed paper covers are filmed beginning with the front cover and ending on the last page with a printed or illustrated impression, or the back cover when appropriate. All other original copies are filmed beginning on the first page with a printed or illustrated impression, and ending on the last page with a printed or illustrated impression.

The last recorded frame on each microfiche shall contain the symbol \rightarrow (meaning "CONTINUED"), or the symbol ∇ (meaning "END"), whichever applies.

Maps, plates, charts, etc., may be filmed at different reduction ratios. Those too large to be entirely included in one exposure are filmed beginning in the upper left hand corner, left to right and top to bottom, as many frames as required. The following diagrams illustrate the method:



L'exemplaire filmé fut reproduit grâce à la générosité de:

University of Toronto
ARCHIVES

Les images suivantes ont été reproduites avec le plus grand soin, compte tenu de la condition et de la netteté de l'exemplaire filmé, et en conformité avec les conditions du contrat de filmage.

Les exemplaires originaux dont la couverture en papier est imprimée sont filmés en commençant par le premier plat et en terminant soit par la dernière page qui comporte une empreinte d'impression ou d'illustration, soit par le second plat, selon le cas. Tous les autres exemplaires originaux sont filmés en commençant par la première page qui comporte une empreinte d'impression ou d'illustration et en terminant par la dernière page qui comporte une telle empreinte.

Un des symboles suivants apparaîtra sur la dernière image de chaque microfiche, selon le cas: le symbole \rightarrow signifie "A SUIVRE", le symbole ∇ signifie "FIN".

Les cartes, planches, tableaux, etc., peuvent être filmés à des taux de réduction différents. Lorsque le document est trop grand pour être reproduit en un seul cliché, il est filmé à partir de l'angle supérieur gauche, de gauche à droite, et de haut en bas, en prenant le nombre d'images nécessaire. Les diagrammes suivants illustrent la méthode.

errata
l to

t
e pelure,
on à



32X

To the Senate of the University of Toronto :—

As President of the Board of Trustees of the Park Hospital I have been requested by the Board to address you in regard to the present position of the Hospital.

As you are doubtless aware, the Wycliffe College property was purchased for \$60,000, the donation of \$40,000 from Hon. John Macdonald having been applied on account of purchase money, the unpaid portion amounting to \$20,000 being secured by mortgage on the property, payable at the end of five years and bearing interest at the rate of six per centum per annum payable half-yearly in the meantime. This mortgage is held by the Canada Life Assurance Company, who also hold as collateral security the bond of eight of the trustees for payment of the interest till the principal is due. The half-year's interest due last November was not paid and the Company allowed payment thereof to be deferred till May. Thus a year's interest became due on or about the first instant, and the Company require payment this month otherwise threaten proceedings. Some of the sureties for this interest are quite willing to pay their rateable proportion, others, it is said, are not. The adverse criticism to which the scheme has been subject, and the belief that such criticism will be continued if any attempt be made to advance the scheme, has paralyzed the movement. Some of the many influential and wealthy citizens who identified themselves with it have withdrawn from all connection, whilst nearly all of the remainder desire to do so. Several persons who intended to give substantial aid have been discouraged in such intentions and some at least have entirely altered the same. Thus the scheme once full of promise has been almost wrecked, the only thing required to complete such result being that the Company sell the property under their mortgage.

The Company may adopt either of two courses, namely, may collect interest on their mortgage from the sureties until maturity of the mortgage and then proceed against the property for principal money, or may now proceed against the property itself by bringing the same to a sale or foreclosure. When this stage is reached there will disappear, I fear, the last chance for the University having an hospital under its control. The establishment of such an institution must depend, I think, upon private charity. If Mr. Macdonald's generous act becomes abortive, no one is likely to again bring such an opportunity within the reach of the University. ~~The Park Hospital~~ scheme if carried out will in time, I believe, afford to the University Medical Faculty hospital facilities at least equal to those supplied to McGill by the Victoria Hospital, in which already some professional appointments have been made. Without the hospital our University might find the prestige of its Medical Faculty eclipsed by the attractions of the more fortunate McGill. Thereafter our Medical Faculty will be maintained at great disadvantage, in fact, it may be a question whether it will be able in the long run to survive so unequal a contest.

These views, strongly as I entertain them myself, I present with much diffidence, not knowing whether they are shared in by the medical gentlemen connected with the University. Whether it is possible for the Senate to avert the threatened destruction of the scheme I cannot say. though I think that even yet it might be saved were the Senate to manifest some sympathy with it. It appears to me reasonable to assume that no one is likely to contribute of his means towards the project intended largely for the University's benefit, but which does not receive the Senate's endorsement. Personally I have no desire to continue the thankless task of struggling against opposition to place the scheme upon a working basis, but feeling beyond all doubt that it is capable of great advantage to the University, I am unwilling to withdraw my support from it so long as there is any chance of its being proceeded with. At the same time I desire the Senate to understand that though willing to continue in such connection, I would infinitely prefer being relieved from any such further duty, and shall cheerfully make way for another to take my place.

Toronto, 25th May, 1893.

I remain

Your obedient servant,

W. MULOCK.

