

Technical and Bibliographic Notes / Notes techniques et bibliographiques

The Institute has attempted to obtain the best original copy available for filming. Features of this copy which may be bibliographically unique, which may alter any of the images in the reproduction, or which may significantly change the usual method of filming, are checked below.

L'Institut a microfilmé le meilleur exemplaire qu'il lui a été possible de se procurer. Les détails de cet exemplaire qui sont peut-être uniques du point de vue bibliographique, qui peuvent modifier une image reproduite, ou qui peuvent exiger une modification dans la méthode normale de filmage sont indiqués ci-dessous.

- Coloured covers/  
Couverture de couleur
- Covers damaged/  
Couverture endommagée
- Covers restored and/or laminated/  
Couverture restaurée et/ou pelliculée
- Cover title missing/  
Le titre de couverture manque
- Coloured maps/  
Cartes géographiques en couleur
- Coloured ink (i.e. other than blue or black)/  
Encre de couleur (i.e. autre que bleue ou noire)
- Coloured plates and/or illustrations/  
Planches et/ou illustrations en couleur
- Bound with other material/  
Relié avec d'autres documents
- Tight binding may cause shadows or distortion along interior margin/  
La reliure serrée peut causer de l'ombre ou de la distorsion le long de la marge intérieure
- Blank leaves added during restoration may appear within the text. Whenever possible, these have been omitted from filming/  
Il se peut que certaines pages blanches ajoutées lors d'une restauration apparaissent dans le texte, mais, lorsque cela était possible, ces pages n'ont pas été filmées.
- Additional comments: /  
Commentaires supplémentaires:

- Coloured pages/  
Pages de couleur
  - Pages damaged/  
Pages endommagées
  - Pages restored and/or laminated/  
Pages restaurées et/ou pelliculées
  - Pages discoloured, stained or foxed/  
Pages décolorées, tachetées ou piquées
  - Pages detached/  
Pages détachées
  - Showthrough/  
Transparence
  - Quality of print varies/  
Qualité inégale de l'impression
  - Continuous pagination/  
Pagination continue
  - Includes index(es)/  
Comprend un (des) index
- Title on header taken from: /  
Le titre de l'en-tête provient:
- Title page of issue/  
Page de titre de la livraison
  - Caption of issue/  
Titre de départ de la livraison
  - Masthead/  
Générique (périodiques) de la livraison

This item is filmed at the reduction ratio checked below/  
Ce document est filmé au taux de réduction indiqué ci-dessous.

10X		14X		18X		22X		26X		30X	
									J		
		12X		16X		20X		24X		28X	32X

**BANK OF BRITISH NORTH AMERICA.**

INCORPORATED BY ROYAL CHARTER.  
 Paid-up Capital.....£1,000,000 Stg.  
 Reserve Fund.....£255,000 "  
 LONDON OFFICE—3 Clements Lane, Lombard Street, E.C.  
 COUNTY OF DIRECTORS—J. H. Brodie, H. J. B. Kendall, John James Oaker, J. J. Kingbird, Henry K. Farver, Frederick Lubbock, Michael H. Gray, Geo. D. Whitman, E. A. Hoare, G. Farver  
 A. G. WALLIS—Secretary.

Head Office in Canada—St. James St., Montreal.  
 E. E. Grindley, General Manager. E. Stanger, Inspector.  
 Branches and Agencies in Canada—London, Kingston, Fredericton, N.B., Brandon, Ottawa, Halifax, N.S., Paris, Montreal, Victoria, B.C., Hamilton, Quebec, Vancouver, B.C., Toronto, St. John, N.B., Winnipeg, Brandon, Man.  
 H. M. FREDDON, MANAGER, MAIN STREET, WINNIPEG.  
 Agents in the United States—New York—H. Stikeman, and F. Brownfield Agts. San Francisco—W. Lawson and J. G. Welch, Agts. London Bankers—The Bank of England—Messrs. Glyn & Co.  
 Foreign Agents—Liverpool, Bank of Liverpool. Australia, Union Bank of Australia. New Zealand, Union Bank of Australia. India, China and Japan—Chartered Mercantile Bank of India. London and China, Agra bank, (limited). West Indies, Colonial bank Paris, Messrs. Marcuard, Krauss et Cie. Lyons, Credit Lyonnais.

**UNION BANK OF CANADA.**

HEAD OFFICE, - QUEBEC.  
 CAPITAL PAID UP - - \$1,200,000  
 RESERVE FUND - - - 150,000  
 DIRECTORS:  
 ANDREW THOMSON, Esq., President. E. J. PRICE, Esq., Vice-President.  
 Hon. Thos. McGroovy, D. O. Thomson, Esq., E. Giroux, Esq., E. J. Hale, Esq., Sir A. T. Galt, G.C.M.G.  
 E. K. WEBB, Cashier.  
 F. L. PATTON, Manager, - - WINNIPEG.

BRANCHES:  
 Alexandria, Ont. Quebec, Que.  
 Iroquois, Ont. Smith's Falls, Ont.  
 Lethbridge, N.W.T. Toronto, Ont.  
 Merrickville, Ont. West Winchester, Ont.  
 Montreal, Que. Winnipeg, Man.  
 Ottawa, Ont.  
 Foreign Agents London—The Alliance Bank (Limited). Liverpool—Bank of Liverpool (Limited). New York—National Park Bank Boston—Lincoln National Bank. Minneapolis—First National Bank.  
 Collections made at all points on most favorable terms. Current rate of interest allowed on deposits.

**IMPERIAL BANK OF CANADA.**

CAPITAL (paid up) .....\$1,500,000.00  
 RESERVE ..... \$700,000.00  
 E. S. HOWLAND, President. T. R. HERRITT, Vice-President  
 HEAD OFFICE, TORONTO. — D. R. WILKIE, Cashier.  
 BRANCHES IN THE NORTHWEST:  
 Winnipeg,.....C. S. Hoare, Manager  
 Brandon,.....A. Jukes, "  
 Calgary.....S. Barber, "  
 Portage la Prairie.....N. G. Leslie, "  
 BRANCHES IN ONTARIO:  
 Essex Centre, Niagara Falls, Ingersoll, St. Thomas  
 Fergus, Fort Colborne, Yonge St. Walland,  
 Galt, St. Catharines, Toronto, Woodstock,  
 Sault Ste. Marie.  
 Deposits received and interest allowed at current rates. Drafts and letters of credit issued available in Canada, Great Britain, United States, France, China, India, Australia and New Zealand.  
 Municipal and other debentures purchased.  
 Agents in Great Britain—Lloyd's Barnetts & Bosanquet's Bank (Limited), 72 Lombard Street, London, England.  
 Correspondents—London & Southwestern Bank, Manchester & Liverpool District Banking Co. (Limited). E. W. Yates & Co., Liverpool.

**Bank of Ottawa.**

HEAD OFFICE, OTTAWA.  
 GEORGE BURN, - CASHIER.  
 Capital paid up .....\$1,000,000  
 Res. .... \$400,000  
 DIRECTORS:  
 James Macfarlan, Esq., President. Cass. Magee, Esq., Vice-President.  
 Alex. Fraser, Esq. Hon. Geo. Bryson. John Mather, Esq. Robert Blackburn, Esq. George Hay, Esq.  
 BRANCHES:  
 Arnprior, Pembroke, Carleton Place and Keewatin, Ont. Winnipeg, Manitoba.  
 AGENTS—Canada, Bank of Montreal; New York, Messrs. W. Watson and A. Lang; London, Eng., Alliance Bank; St. Paul, Merchants National Bank.

WINNIPEG BRANCH: 389 MAIN STREET:  
 We receive accounts of corporations' manufacturers, firms and individuals on favorable terms.  
 Interest allowed on deposits.  
 Sterling and American exchange bought and sold.  
 Drafts issued on all the principal points in Canada.  
 Letters of Credit issued for use in Great Britain and elsewhere.  
 Collections promptly attended to.  
 F. H. MATHEWSON, MANAGER.

**OSLER, HAMMOND & NANTON**

381 MAIN STREET,  
 WINNIPEG.  
**Osler & Hammond,**  
 18 KING STREET WEST, TORONTO.  
 (Members Toronto Stock Exchange)  
**BROKERS,**  
**FINANCIAL AGENTS**  
 —AND DEALERS IN—  
 DEBENTURES, LAND, &c.  
 Real Estate Bought and Sold. Money to Loan.  
 E. B. OSLER. H. C. HAMMOND. A. M. NANTON.

**ALLAN, BRYDGES & CO.**

BANKERS AND BROKERS,  
 339 Main Street, Winnipeg, Man  
 Municipal, School and other  
 Debentures negotiated.  
 ✓ PURCHASED AND SOLD. ✓  
 Branch Office—CARBERRY, Man.,  
 R. T. Rokeby, Manager.  
 INTEREST ALLOWED ON DEPOSITS.

**The Western Canada Loan & Savings Co.**

CAPITAL, - - \$1,500,000.00.  
 RESERVE FUND, - - \$850,000.00.  
 HEAD OFFICES: Toronto, - WALTER S. LIME, Managing Director  
 BRANCH OFFICES: Winnipeg, - W. M. Fisher, Manager  
 Money advanced upon Farm and City Properties, MORTGAGES, MUNICIPAL DEBENTURES & SCHOOL DEBENTURES purchased. Scrip held for use of Clients. Clients title deeds are not sent out of the Province but are lodged in the Company's vaults at Winnipeg, where they may be examined at all times. Agents at all principal points throughout the Province.  
 For further information write to the Manager of the Winnipeg Branch.

**The Barber & Ellis Co'y,**

Nos. 43, 45, 47 and 49 Bay Street,  
 TORONTO, Ont.  
 Manufacturers of ACCOUNT BOOKS,  
 ENVELOPES, PAPER BOXES.  
 Importers of all Grades of Staple Stationery.  
 —DEALERS IN—  
 PRINTERS' SUPPLIES,  
 BOOKBINDERS' MATERIALS AND  
 BOXMAKERS' REQUISITES.

**Union Credit and Protective Association**

O. E. COLLINS, MANAGER.  
 For the Collection of Old and Worthless Debts anywhere in the Provinces of the Dominion of Canada or United States.  
 60 1/2 ADELAIDE STREET EAST, - TORONTO.  
 489 MAIN STREET, - WINNIPEG.  
 Business and Correspondence Solicited.

**ROBINSON, LITTLE & CO.**

—WHOLESALE—  
**DRY GOODS,**  
 343 and 345 Richmond St.,  
 LONDON, Ont.  
 Complete range of Samples with Andrew McAllender, McIntyre Block, Winnipeg.

**GUY ROSS**

Investment Broker and Financial Agent.  
**MUNICIPAL DEBENTURES NEGOTIATED**  
 ROOM 19 CANADA CHAMBERS,  
 26 ST. SACRAMENT STREET, - MONTREAL.

**W. B. RIDDELL & CO**

Commission Merchants  
 AND IMPORTERS OF  
 Green and Dried Fruits.  
 15 OWEN STREET,  
 WINNIPEG

**Gillies' Series of Pens.**

NO.	DESCRIPTION.	PER GROSS
502	Railway Pen, fine point.....	40c.
512	Peruvian Pen, medium point.....	70c.
522	Queen Pen, fine point.....	70c.
532	Lodger Pen, fine point.....	70c.
542	Beaver Pen, turned up point.....	65c.
552	Commercial Pen, medium point.....	60c.
562	Electric Pen, fine point.....	60c.
582	Public Pen, fine point.....	45c.
502	Falcon Pen, medium point.....	40c.
402	Lorne Pen, extra broad point.....	60c.
502	Windsor Pen, medium point.....	50c.

FOR SALE BY ALL STATIONERS.  
 WHOLESALE ONLY FROM  
**BUNTIN, GILLIES & CO.**  
 Wholesale Stationers, Paper, Envelope and Account Book Manufacturers.  
 HAMILTON, - ONTARIO.

**Robertson, Linton & Co**

CORNER OF ST. HELEN AND LEMOINE STS.,  
 MONTREAL.  
 Importers of British and Foreign Dry Goods,  
 Canadian Tweeds, Cottons, Etc.  
 Complete set of Samples with J. N. ADAMS,  
 Rooms 14 and 15, Rowan Block, Winnipeg.  
 (Opposite Queen's Hotel.)

**BRITISH COLUMBIA.**

Attention this summer is largely directed to the Sunset Province of the Dominion. All those desirous of obtaining information regarding its mines, farm and fruit lands, timber, real estate, or any other subject connected with its resources, are invited to communicate with C. WHEATHAM & CO., real estate, insurance, mining, financial, mercantile and commission agents, Vancouver, who will take pleasure in replying fully and promptly to all inquiries.

**HENDERSON & BULL,**  
 WHOLESALE COMMISSION MERCHANTS  
 ESTABLISHED 1832.  
 41 BANNATYNE STREET EAST, WINNIPEG.  
 AGENTS FOR  
 THE CANADA SUGAR REFINING Co. Ld. Montreal  
 Sugars and Syrup.  
 THE CANADA JUTE Co., Ld. Montreal  
 Jute and Cotton Bags, Twines, Hessians, &c.  
 THE EDWARDSBURG STARBUCK Co., Montreal  
 THE DARTMOUTH ROPE WORK Co., Halifax  
 Binder Twine, Sial and Mauila Corilage.  
 MESSRS. CUDAHY BROS. Milwaukee  
 Smoked and Dried Meats, Mess Pork, Lard, &c.  
 THE SIMCOE CANNING COMPANY, Simcoe  
 Canned Goods.  
 THE LONGFORD M<sup>FO</sup> COMPANY, Orillia  
 Pails, Tubs and Woodenware.  
 DUNBAR, McMASTER & Co. Ld. Gilford, Ireland  
 Gilling Nets and Twines.

AMES, HOLDEN & CO., MONTREAL.  
**The Ames, Holden Company,**  
 WHOLESALE  
 Dealers in  
**BOOTS & SHOES,**  
 33 Queen Street,  
 WINNIPEG  
 JAMES REDMOND, WINKIPKO.  
 A. C. FLUMERFELT, VICTORIA.

**Thompson,**  
**Codville & Co.,**  
**WHOLESALE GROCERS,**  
 26 McDermott Street,  
 WINNIPEG.

JAS. PORTER W. M. RONALD.  
**PORTER & RONALD,**  
 DIRECT IMPORTERS OF  
**GROCKERY**  
**GLASSWARE**  
**CHINA**  
**LAMPS,**  
**CHANDELIERS,**  
**CUTLERY,**  
**SILVER-PLATED WARE & FANCY GOODS**  
 230 MAIN ST., WINNIPEG,

GROCERS, ATTENTION!  
 ASK FOR THE CELEBRATED  
**"Reindeer Brand"**  
**CONDENSED MILK,**  
**Condensed Coffee and Milk**  
 THE BEST IN THE MARKET.  
 For Sale By All Wholesale Grocers.  
 —MANUFACTURED BY THE—  
**Truro Condensed Milk & Canning Co. Ld**  
**TRURO.**  
**HENDERSON & BULL, Agents,**  
**WINNIPEG.**

**MILLER, MORSE & Co**  
 —WHOLESALE—  
**Hardware, Cutlery,**  
**Guns, Ammunition,**  
**Du Pont Gun Powder,**  
**ETC.**  
**Princess St., WINNIPEG.**

**J. H. ASHDOWN,**  
 Wholesale Dealer & Importer of all kinds of  
**Shelf and Heavy Hardware,**  
 STOVES AND TINWARE,  
 PAINTS, OILS AND GLASS,  
**RAILROAD and MILL SUPPLIES,**  
 The Trade furnished with our Illustrated  
 Catalogue on application.  
 Corner Main and Bannatyne Streets,  
**WINNIPEG.**

**Cornell, Spera & Co.,**  
 WHOLESALE DEALERS IN  
**Mens' Furnishings**  
 SMALLWARES, ETC.  
 SPECIAL PRICES TO CLEAR OUT LINES OF  
 SUMMER GOODS.  
 Our travellers are now out with full line of  
 New Samples of Fall and Winter Goods.  
**27 Portage Ave. East,**  
**WINNIPEG.**  
 S. W. (11111). J. T. STIRA. GEO. STOUT.

**H. A. Nelson & Sons**  
 TORONTO —AND— MONTREAL  
 DIRECT IMPORTERS AND  
 WHOLESALE DEALERS  
**Fancy Goods and Toys.**  
 ALL THE NEWEST NOVELTIES  
 FROM THE  
 European and American Markets.  
 Represented in Manitoba, Northwest Ter  
 ritories and British Columbia, by  
 W. S. CRONE.

**Mackenzie, Powis & Co.**  
 Have now in Store the most complete  
 range of  
**INDIAN TEAS**  
 Bought at the late favorable turn in  
 the market.  
 BUYERS SHOULD EXAMINE.  
 Also on the way first crop choicest JAPANS  
 together with first crop CONGOUS.  
**Mackenzie, Powis & Co.,**  
**WHOLESALE GROCERS,**  
 Cor. McDermott & Albert Sts., WINNIPEG

**CANADA**  
**STAINED GLASS WORKS**  
 Jos. McCausland & Son, Proprietors.  
 TORONTO, ONT.  
 Memorial and other Windows for  
 Churches and Public Buildings.  
 Household Stained Glass from Original  
 Designs.  
 British Plate Glass, Bent and Bevelled Glass,  
 ETC., ETC.  
**J. H. WOODS,**  
 Solo Agent for Manitoba, N. W. T. and British Columbia.  
 Box 1318. WINNIPEG.

**Redwood Brewery**  
**Fine Ales, Extra Porter**  
**and Premium Lager.**  
 Most Extensive Establishment of  
 the kind in Western Canada.  
**ED. L. DREWRY,**  
 PROPRIETOR,  
 WINNIPEG, - MANITOBA.  
 Highest cash price paid for good  
 Malting Barley.

# The Commercial

A Journal of Commerce, Industry and Finance, specially devoted to the interests of Western Canada, including that portion of Ontario west of Lake Superior, the Provinces of Manitoba and British Columbia and the Territories.

**Eighth Year of Publication.**  
**ISSUED EVERY MONDAY**

SUBSCRIPTION, \$2.00 PER ANNUM (in advance).

#### ADVERTISING RATES.

1 month weekly insertion	\$0 30 per line.
3 months, do	0 75 "
6 " do	1 25 "
12 " do	2 00 "

Transient advertisements, 10 cents per line each insertion.

Fine Book and Job Printing Departments.

Office, 4 and 6 James St. East,

**JAMES E. STERN,**  
Publisher.

*The Commercial certainly enjoys a very much larger circulation among the business community of the country between Lake Superior and the Pacific Coast, than any other paper in Canada, daily or weekly. By a thorough system of personal solicitation, carried out annually, this journal has been placed upon the desk of the great majority of business men in the vast district designated above, and including northwestern Ontario, the provinces of Manitoba and British Columbia, and the territories of Assiniboia, Alberta and Saskatchewan. The Commercial also reaches the leading wholesale, commission, manufacturing and financial houses of Eastern Canada.*

WINNIPEG, JULY 14, 1890.

## Manitoba.

F. Loader has opened a restaurant in Winnipeg.

J. D. Chapelaine has sold out his hotel at Cypress River.

J. Fletcher, hotelkeeper, Binscarth, has given up business.

The fees from the Winnipeg market for June amounted to \$115.30.

Middleton & Co., boots and shoes, Winnipeg, have given up business.

Two tons of woolen yarn were shipped from the Rapid City mills last week.

Mrs. E. Clay has opened out in the fruit and confectionery business at Rapid City.

Hamilton & Spence, hotelkeepers, Winnipeg, have dissolved; each continuing alone.

A. W. Bailey, harness maker, Rapid City, has added boots and shoes to his business.

Campbell & Leflar, general merchants, Rapid City, have dissolved; Leflar continues the business.

Wm. Madder, general storekeeper and farmer, Douglas, is opening in lumber business at Madford.

Brandon merchants are complaining of a scarcity of change since the American silver has been expelled.

The contract for putting an electric light in the Portage la Prairie paper mills has been awarded to a Montreal firm.

The by-law to grant exemption from taxation to the Winnipeg soap factory was defeated by popular vote last week. The vote was very small, and stood for the by-law, 277; against it, 253.

J. H. Holman, representing H. Shorey & Co., clothing, Montreal, at Winnipeg, has moved his sample rooms from 35 Lombard St. to '8 Rowand Block, corner Portage Avenue and Main St.

The report of the immigration offices for the first six months of this year show the number of bona fide settlers coming to Manitoba and the Western Territories to have been: January, 230; February, 232; March, 2,146; April, 1,868; May, 1,904; June, 1,098; total, 7,478.

The transactions of the Dominion Government's Savings Bank at Winnipeg for June were: Deposits, \$10,972 86; withdrawals, \$25,803.96; withdrawals exceed deposits by \$8,831.10. The balance due depositors on July 1st, 1890, was \$314,873.58.

W. J. Bird, hide inspector at Winnipeg, has presented his half-yearly report, in which he shows that the total number of hides inspected were 4,812. This would indicate a falling off in numbers. The decrease is accounted for by low prices, scarcity of hay, and by shipments east and south. The total amount of fees collected during the half-year was \$210.60

## Saskatchewan.

Reports from Prince Albert say the hay prospects are good.

A letter from Mr. Biggar, engineer of the Great Northwestern Central railway, says that work on the survey west of the Elbow, on the south side of the Saskatchewan, is progressing rapidly as nearly as possible along the survey of the original line of the Canadian Pacific railway.

The Prince Albert *Saskatchewan* is evidently doing its best to place the advantages of the district it represents before the world. A sixteen page issue of that journal has just come to hand containing an exhaustive article on the advantages of the territory of Saskatchewan in general and Prince Albert district in particular. This relieves the newspaper of all responsibility in the matter, and if the people will second the efforts of the publishers and see that this number is liberally distributed in eastern Canada and even as far as the old country, we are sure it will be of great value as an advertisement of the resources of the Territory.

## Assiniboia.

Bredenburg wants a general store.

A. Gaudry has opened a butcher shop at Moose Jaw.

H. Ferguson has bought out the butcher business of Bate & Ferguson at Moose Jaw.

J. D. Sibbald, the popular and well known business man of Regina, has taken unto himself a wife.

The merchants of Moose Jaw have signed an agreement to close their stores at 7 o'clock every evening except Saturday, and on Wednesday at 2 o'clock.

The stock of Narvolansky & Ripstein who were burned out in the recent fire at Moosomin and who afterwards assigned, is to be sold by auction on the 16th inst. at Brandon. The stock is valued at nearly \$5,000 and consists of jewellery, boots and shoes and dry goods,

## Alberta.

J. W. Power, jeweler, Calgary, has assigned.

J. W. Power, jeweler, Calgary, has assigned.

F. Gillespie, tea importer, Calgary, has made an assignment.

The H. B. Co., at Edmonton, has paid out \$23,379 for freight since Feb. 1st, 1890, of which \$16,500 was to residents of the town.

The residents of Edmonton district have formed themselves into an association for the purpose of terminating indiscriminate credit.

The Calgary Water Power Company has been organized, and the following elected directors: J. K. Kerr, P. A. Prince, F. H. Moon, D. R. Moon and J. E. Prince.

## Northwestern Ontario.

The Porcupine silver mine was sold recently to the Badger company for \$50,000.

Some trouble is being experienced in passing the machinery for the Rat Portage reduction works through the customs office at Port Arthur. It is being held by the officers there for duty which the reduction works people refuse to pay, as they say that all mining machinery is exempt from duty according to an order-in-council passed by the Government. The company have been compelled to stop work pending the settlement of the dispute.

## General Notes.

New counterfeit Dominion \$2 bills are afloat in Ontario.

A company is being organized for the manufacture of glue in Toronto.

The new prohibition law went into force in North Dakota on July 1st and promptly at midnight every saloon was closed.

The traffic returns of the Grand Trunk Railway for the week ending June 21st, 1890, show a decrease of \$10,043 over the corresponding week of 1889.

Excursion tickets from St Paul and Minneapolis to Port Arthur and return, a distance of 200 miles, are being sold for \$16 by the St. Paul & Duluth road.

A Connecticut genius has gotten up an egg opener, the purpose of which is to open raw or boiled eggs without soiling the fingers or mixing fragments of the shell with the egg.

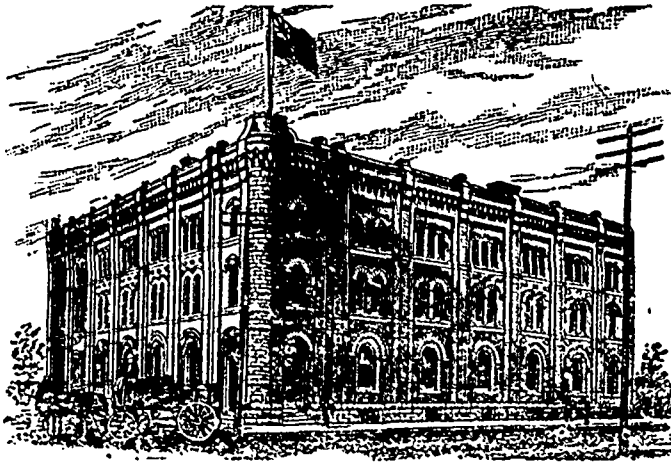
The Toronto Canoe and Boat Company, Toronto, has been organized with a capital stock of \$50,000 and has taken over the boat building and boat house business of W. H. Glendinning.

The customs receipts at the port of Montreal for the month of June were \$715,398.12. The annual statement for the year ending June 30th, 1890, shows a decrease of \$493,630.59 as compared with the year ending 30th June, 1889.

Capitalists are proposing to establish a mill for the manufacture of linen at Minneapolis, Minn. Much depends for its success upon the passage of the McKinley tariff bill, with the linen schedules practically unchanged.

Various reports are coming in as to the state of business in the principal commercial cities of the United States. A decline in the market value of cattle is one of the features and hogs have touched the lowest point of the year. Speculation has been influenced by doubts as to the final solution of the silver question.

GOODS SOLD TO THE TRADE ONLY.



GOODS SOLD TO THE TRADE ONLY.

# G. F. & J. GALT,

## DIRECT IMPORTERS

TEA, SUGARS, WINES, LIQUORS and GENERAL GROCERIES  
CORNER PRINCESS AND BANNATYNE STREETS, WINNIPEG, MANITOBA.

### Winnipeg Board of Trade.

The semi-annual meeting of the Winnipeg Board of Trade was held on Tuesday, July 8th. The following reports were read and adopted:

#### FLOUR AND MEAL EXAMINERS' REPORT.

The report of the board of flour and meal examiners was presented by Mr. Stephen Nairn, chairman.

The board of flour and meal examiners beg to report that their duties for the past year have been fully attended to, and as referred to in the last annual report of their predecessors, these duties have been enlarged and made of more use to Manitoba and Western Canada generally by representation and attendance at the annual meeting of the Dominion Board of Examiners, held at Montreal.

The board sent two delegates to that meeting, who on their return reported flour and meal was principally inspected in Montreal and Quebec there being about 108,000 bns. of flour and about 400 bu. of oatmeal inspected for year ending June, 1889.

The products of Manitoba and Western Canada mills are mostly sold on their merits and brands, but as was shown at the Montreal meeting it is necessary to have established grades to judge from, when any dispute arises between the buyer and seller as to quality, and for this reason the closer connection now made between the western producer and the eastern consumer, through this representation of your board on the Dominion board, must be kept up by the regular attendance of our representatives at the annual meetings of the Dominion board.

There has been no movement yet as to the appointment of a flour and meal inspection, the work to be done not inducing any one to offer themselves exclusively for that duty, and the board would suggest that our grain inspector combine the duties of this office, the same as is done by the Toronto inspector.

The members of the board for past year were:

Stephen Nairn, D. H. McMillan, Samuel Spink, F. W. Thompson and James Anderson. All of which is respectfully submitted.

#### GRAIN EXAMINERS' REPORT.

The board of grain examiners beg to present their annual report.

Under the amended Grain Inspection Act your examiners sent their delegates to the meeting held 24th September last to fix standards of grain grown west of Lake Superior. The working of the amended Act has proved, so far, to be quite satisfactory, the cost to the Dominion being very much less than under the old method.

Only one appeal from Inspector Horn's grading has been made during the past year, and your examiners sustained the inspector's ruling.

Attached herewith is the inspector's return of all grain inspected by him at Winnipeg from 1st July, 1889, to 30th June, 1890.

#### GRAIN INSPECTOR'S RETURN.

Year ending June 30th, 1890, — crop 1889 inspected at Winnipeg.

		Bushels.
Wheat—		
Extra Manitoba Hard.	77 cars at 650 bu.	50,050
One Hard.	1,324 " "	\$60,600
Two Hard.	990 " "	643,500
One Northern.	59 " "	33,350
Two Northern.	387 " "	251,550
Three Northern.	35 " "	22,750
One White Fyfe.	29 " "	13,850
One Rejected.	162 " "	105,300
Rejected.	333 " "	316,450
Total.	3,396 cars	2,207,400

	PERCENTAGES.	
Extra Manitoba Hard.	21%	
One Hard.	39%	
Two Hard.	29%	
One Northern.	1%	
One White Fyfe.	1%	
Two Northern.	11%	73% high grade.
Three Northern.	1%	
One Rejected.	4%	
Rejected.	9%	27% low grade.
		100%

#### ELECTION OF EXAMINERS.

The following boards of examiners were elected for the year 1890-91:—

Board Grain Examiners—R. P. Roblin, J. A. Mitchell, N. Bawlf, S. A. McGaw, S. Spink.

Board Flour and Mill Examiners—S. Nairn, D. H. McMillan, S. Spink, F. W. Thompson, Jas. Anderson.

Board Hide and Leather Examiners—E. F. Hutchings, W. N. Johnson, D. Bawlf, P. Gallagher, F. Ossenbrugge.

A fire in Seattle on July 1st destroyed \$30,000 worth of property in the business portion of the town.

## WHOLESALE JEWELER.

Manufacturer and Importer of

# Watches, Diamonds,

Jewelry, Clocks, Etc.

# Tools, Material,

Etc., Etc.

Prices guaranteed as low as any House in Canada. Write for quotations. Call and see us when in the City.

433 and 435 MAIN STREET.

# W. F. DOLL,

### To Dairymen.

The following letter from Jas. W. Robertson, dairy commissioner of the Dominion Experimental Farm, Ottawa, was read at the last meeting of the Winnipeg board of trade:

The Hon. Mr. Carling, Minister of Agriculture, has asked me to take a trip through Manitoba and the Territories in August and September, for the purpose of addressing a series of meetings, to encourage and instruct the farmers of those provinces how to engage more extensively in animal husbandry, especially in connection with the development of the dairy business. The importance of that branch of agriculture to the farmers of Manitoba can hardly be over-estimated. My programme as provisionally arranged for Manitoba is as follows:

Winnipeg, Wednesday, August 13th.

Manitou, Friday, August 15th.

Glenboro, Saturday, August 16th.

Brandon, Tuesday, August 19th.

Portage la Prairie, Wednesday, August 20th.

Minnedosa or some other point on the M. & N. W. railway, for Friday, August 22nd. I then go to Moosomin, N.W.T., for Monday, August 25th. Any assistance which you can render in securing the attendance of a large number of farmers at these meetings will be appreciated and will doubtless be of direct benefit to the business men of your city.

### Insurance Briefs.

The Indiana Supreme Court has decided that death resulting from alcoholism does not vitiate a life policy.

A life insurance company is being organized in St. Louis with a capital of \$1,500,000, to be called the Merchants Life Insurance Company of America.

The Mutual Life Insurance Company of New York has added \$500,000 to its deposits with the Dominion Government. This is the outcome of the new law which demands that American companies doing business in Canada shall increase the amount of their deposits.

Senator Pettigrow, of Dakota, says enough tin will be produced in Dakota next year to supply the whole of the United States.

**W. D. PETTIGREW & CO.**

WHOLESALE

—DEALERS IN—

Plaster of Paris,  
Plasterer's Hair,  
Wheelbarrows

SEND FOR PRICES

528 Main Street,  
WINNIPEG.

**STEWART HOUSE**

COR. MAIN & ELLIS STS., MANITOU, MAN.

First-Class in every respect! Re-fitted! Re-furnished  
Good Table! Good Rooms! Three best Sample Rooms  
in the Province.

ROUNTREE & CONNOR, Proprietors.



**LAKE OF THE WOODS MILLING CO.**

The most perfect Flouring Mill in Canada. CAPACITY 1,600 BARRELS A DAY.

Barrel Factory at the Mill and Grain Storage Capacity of 550,000 bushels in addition to which a system of handling Elevators are now being constructed throughout the Northwest.

All Grades of HARD WHEAT FLOUR in Barrels and Bags.

FOR QUOTATIONS AND OTHER INFORMATION APPLY TO THE MILLS,

KEEWATIN, - ONTARIO.

**THE DARTMOUTH ROPE WORK COMPANY**

**HALIFAX, Nova Scotia.**

== THE LARGEST CORDAGE FACTORY IN THE DOMINION. ==

Manufacturers of **CORDAGE** of Every Description.

ALSO SOLE MANUFACTURERS OF THE CELEBRATED

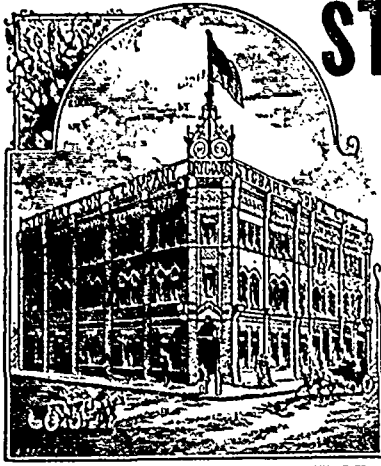
*Blue Ribbon Binder Twine*

Head Office: HALIFAX, N.S.

SOLE AGENTS FOR MANITOBA AND NORTHWEST:

**HENDERSON & BULL,**

41 Bannatyne Street East, - WINNIPEG



# STOBART, SONS & CO

—WHOLESALE—

## DRY GOODS

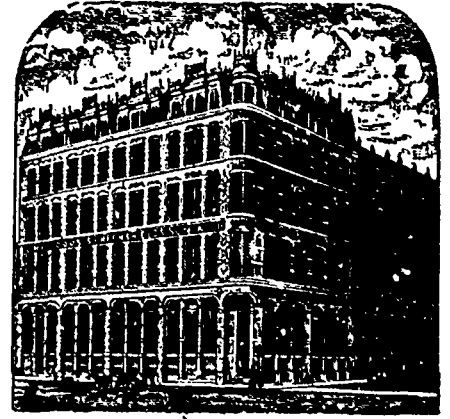
WINNIPEG, Man., and LONDON, Eng.

FALL, 1890.

Travellers are now out with Fall and Winter Samples.

ALL-NEW IMPORTATIONS.

Kindly receive your orders till you see the m.



# S. GREENSHIELDS, SON AND CO.,

GENERAL

## DRY GOODS,

17, 19 & 21 Victoria Square and 730, 732, 734 and 736 Craig Street, MONTREAL

Complete Set of Samples with

C. J. Redmond,

Also with Donaldson's Block, WINNIPEG  
Wm. Skene, Van Horne Block, Vancouver, B.C.

# Standard OIL Company

(UNITED STATES)

The Best Lubricating and Illuminating Oils Manufactured.

74° Deodorized Gasoline for Stove Use of the best and only reliable article made.

ALL PRODUCTS OF PETROLEUM IN STOCK.

D. WEST, Agent, Office: Western Canada Loan Building.

Room 8, Corner Portage Avenue and Main Street, WINNIPEG.

# JAS. MCCREADY & CO.,

WHOLESALE

Boot and Shoe Manufacturers, MONTREAL.

SAMPLE ROOMS, 496 MAIN ST. WINNIPEG  
W. WILLIAMS, AGENT.

# MILLS & McDOUGALL,

(LATE MILLS & HUTCHINSON)

MONTREAL.  
CANADIAN WOOLENS, IMPORTED WOOLENS AND TRIMMINGS.

Represented in Manitoba, Northwest and British Columbia by Mr. G. H. SIMPSON.

# GOLD, WHALES & HONEY.

Honey in Manitoba,  
Whales in Hudson's Bay,  
Gold in British Columbia  
And rich nuggets all through

# The Colonist.

A mine of curious and interesting reading.  
Have you seen it? A 32-page illustrated magazine on fine paper. A perfect guide to Western Canada from Lake Superior to the Pacific Ocean.

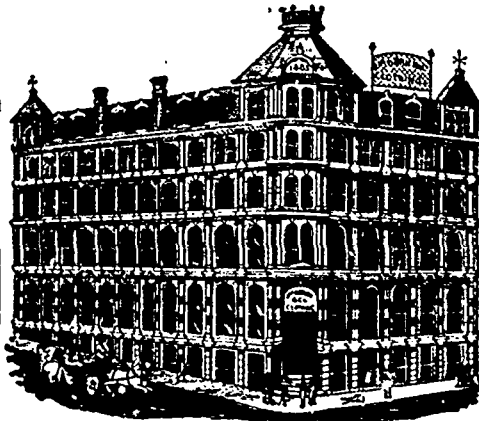
SEND TEN CENTS FOR SAMPLE. STAMPS TAKEN.  
Address:—THE COLONIST, Winnipeg, Can.

# Jas. O'Brien & Co.

—MANUFACTURERS OF—

# CLOTHING

Montreal and Winnipeg.



HEAD OFFICE AND MANUFACTORY:  
VICTORIA SQUARE, - MONTREAL.

# OGILVIE MILLING COY,

## WINNIPEG.

REGISTERED BRANDS:

# Hungarian and Strong Bakers' Flour

—DEALERS IN ALL KINDS OF—

## GRAIN AND FEED.

MILLS:

	DAILY CAPACITY		DAILY CAPACITY
ROYAL—Montreal	1800 Barrels	POINT DOUGLAS—Winnipeg	1000 Barrels
GLENORA " "	1200 " "	SEAFORTH—Seaforth, Ont.	300 " "
GODERICH—Goderich, Ont.	1000 " "		

# WATEROUS ENGINE WORKS COMPANY LD.

WINNIPEG, Man.

## ENGINES AND BOILERS

SAW-MILLS

—AND—

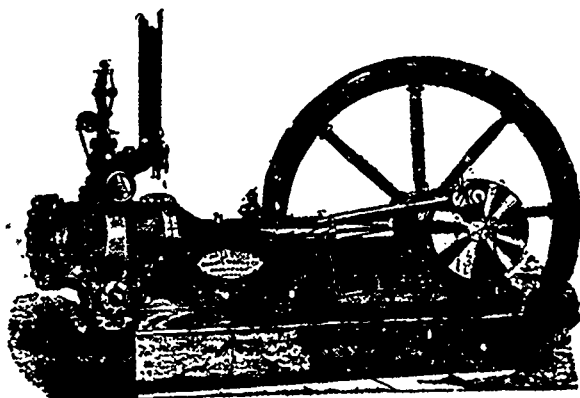
## SAW-MILL MACHINERY

ELEVATOR MACHINERY.

SOLE AGENTS FOR

BARNARD & LEA'S ELEVATOR SEPARATORS.

WRITE FOR CIRCULARS.



# The Commercial

WINNIPEG, JULY 14, 1890.

## THE CORDAGE COMBINE.

Renewed interest has been given to the question of binder twine by the recent announcement that a combination of the Canadian Cordage manufactories has been effected.

It has been known for some time that a move was on foot to form a combination of the different cordage works in Canada. This has now been effected, under the name of the Consumers' Cordage Company, Limited. This company now controls all the rope, cordage and binder twine factories in Canada, with the exception of the factory at Brantford, Ontario.

The factories in the combine are those located at Halifax, Montreal, Lachute, Quebec, Toronto and St. John. Some United States capitalists are interested in the deal in conjunction with Canadian Cordage manufacturers.

The effect of this move will be watched with interest by the trade. The United States capitalists interested are manufacturers in the same line in that country, and the deal will bring the Canadian manufacturing interest into accord with that in the United States. It is claimed that the United States manufacturers have secured a corner on manilla and sisal, which is the raw material principally used in the manufacture of rope, twine, etc., hence it was necessary in order to obtain this material, that the combination should be effected. The leaders of the combine declare that by this consolidation of the Canadian manufacturing interest they will be able to obtain their supply of raw material at a reduction of 30 to 40 per cent., as the parties holding the corner on the raw fibre are also in the new company which controls the Canadian factories. It is announced that the price of twine will not be reduced this season as the stock of high-priced twine on hand at the various factories had to be taken over by the new company. It is "generously" stated that Canadian consumers will be given the benefit of the reduced cost of the raw material next season. Time will show whether the combine will carry out this promise.

## THE RETAILERS ASSOCIATION.

The secretary of the Retailers Association is sending out a circular to all merchants in Manitoba and the Territories, asking them to become members of the organization. This is in accordance with a resolution passed at the convention of retail merchants held in Winnipeg last winter, when the association was formally organized. It is to be hoped that there will be a general response to the circular. The membership fee is very small, having been placed at the small sum of fifty cents, which amount it is expected will be sufficient to defray the current expenses of the association. It is the desire of the officers that the membership should include as nearly as possible the entire mercantile element of Manitoba and the Territories. If any merchant should not receive a circular, it will be because his name has been accidentally

omitted from the list. Therefore if any should not receive the circular, they are invited just the same to send their name and the membership fee to the secretary, W. T. Reid, whose address is at Neepawa, Man. The fee is so small, that those who do not reply may be considered as either neglecting the matter through carelessness, or that they are opposed to the objects of the association.

Organization is a feature of the age. Nearly all the professions have their organizations, and there are few important industrial pursuits which are not thoroughly organized by the formation of associations of some kind. Retail merchants appear to be the most tardy to move in this direction, but of late years some successful efforts have been made to organize retail merchants' association in Eastern Canada. The first effort in this direction in the west culminated in the convention held at Winnipeg last winter. That the convention was a great success, was generally acknowledged by those present, and it was unanimously resolved to effect a permanent organization. A great deal of preliminary work had to be accomplished at the first meeting, which will not have to be done over again, and consequently when the merchants come together again, they will be able to start where they left off the last time. On account of the work of organization which had to be undertaken, it was not to be expected that a great deal could be done at the first meeting of a general nature of interest to merchants. Still those who were present went away satisfied that they had inaugurated a good work, and had gained much information which would be useful to them in conducting their business.

This association, if properly conducted, will result in great good to the retail trade of the country, and the only way to have it so conducted is for each merchant to take a lively individual interest in the organization. While the country is young is the time to place trade upon a proper basis, and by uniting now in an endeavor to educate the people into correct business habits, the merchants should be able to attain excellent results. The time for holding the next convention will soon come around, and it is not too soon for merchants to bestir themselves, and do what they can to further the interests of the association in preparation for the fall meeting.

## THE PROHIBITION FARCE.

The situation in the Territories as regards the liquor question, is not improving. Evidently the introduction of four per cent. beer has not helped matters much, but rather the contrary. It has, if anything, still further complicated the situation and rendered the alleged restrictive regulations more farcical than ever. Personal investigation of the conditions now ruling discloses the fact that in the western portion of the Territories at least, there is more disregard for the law than ever before. The restrictive regulations regarding the importation and sale of liquors in the country have always been more or less of a dead letter over a large portion of the country, but at the present time there appears to be no regard whatever for the law on this matter. In

fact the restrictive regulations are simply regarded with supreme contempt. This is not a pleasant thing to contemplate in a country otherwise considered to be inhabited by a law-abiding people. It is not a good lesson for the people, to continue laws which are disregarded in such a wholesale and barefaced manner. If the liquor regulations are impractical of enforcement, they should be radically changed. If they can be enforced, then let them be carried out to the letter, or as closely as possible.

The present state of things in the country is simply disgraceful to those who are responsible for it. The number of places where liquor is sold in the western territorial towns is certainly greater than in any portion of Canada, in proportion to population. This is the state of things existing in a country where the sale of liquors is supposed to be absolutely prohibited, except that one or two hotels in each community are licensed to sell "four per cent." beer. We were assured upon good authority, that in one town with a population of twelve or fifteen hundred, there were fully fifty places selling liquors, and not four per cent. beer alone either. A little investigation appeared to bear out this statement. Now, what town in Canada outside of the Territories, with a like population, can approach such a record? And in this town there is a detachment or two of mounted police, the special minions of the Dominion Government which imposes these "restrictions" upon the Territories. Do these men do their duty? It looks rather as if they were charged to leave the business alone, for the purpose of rendering the law unpopular.

However, the police are not as much to blame as those not acquainted with the situation would imagine. In the first place, it is always a disagreeable task to enforce a law which is thoroughly unpopular, and naturally the local officials shrink from taking action to enforce the law. Then the permit system renders it very difficult to secure convictions against violators of the act. When a seizure of liquor is made, there is usually a permit on hand from some quarter to cover it. Permits to bring liquor into the country appear to be granted simply upon request and the payment of the fee. Liquors brought in in this way are not supposed to be for sale, but it is very difficult to prevent a party having liquor legally in his possession from selling it. To show the extent to which the permit system is carried it may be stated that at one small station seventeen empty whiskey kegs were put upon the train to be returned to the shippers.

Of course a great deal of liquor is brought into the country which does not come in by permit. How it gets there is not our business to enquire, but it gets there all the same in unlimited quantities, and in nearly all the varieties known to the vendors of such goods. The authorities pounced upon a few poor men who were trying to make a living by the manufacture of light beers in the Territories, and ruthlessly robbed them of their property and mode of livelihood, bringing some of them to ruin. These men thought they were acting within the law, and as they had not been interfered with for years, usage apparently sanctioned their



occupation. But their business was destroyed without compensation, while in other respects there is no effort made to enforce the law. There is absolutely no restriction upon the promiscuous sale of liquors in some of the western towns, and the number of places where liquor is sold is wonderful. Drunkenness is very much more prevalent than in Manitoba where licenses are granted, and the temptations to drink are immeasurably greater. Especially is this the case as a result of the permit system, for when a person of a social disposition obtains a quantity of liquor on the permit plan, he will invite his friends in to have a "big time" with him.

This is the moral aspect of the case. Commercially, the tendency is to encourage smuggling and underhand dealing, in a business which would otherwise be done in something like a business way. Then the Government licenses one or more hotels in each place to sell light beer, but little or no effort is made to prevent others from selling liquors of all kinds without a license.

It will be understood that this article applies to the western portion of the Territories. In some sections, particularly in the east, disregard for the law is not so generally apparent. It is evident, however, that a change is required, and the easiest plan would seem to be to allow the people to pronounce upon the question. If they want a prohibitory law, then let them have it, free from "four per cent. beer" and "permit" clauses. If the people declare for a license system, it will certainly be a great improvement upon the present situation. The present regulations, with the "beer" clause and the ridiculous permit system, under which one man grants individual licenses to import liquors according to his personal whims, are to outrageous in their nature to be tolerated in a country where the people are supposed to enjoy civil liberty.

### OUTLOOK FOR BUTTER.

There is every indication that the present year will be one of unprecedentedly low values in butter, and merchants will be obliged to exercise unusual care in handling the article, if they are to get through without loss. Anything but best quality is likely to be practically unsaleable this season, except at such prices as it will bring for soap grease or some such purpose. The existing conditions point to very low values for butter in all the leading markets, both in Canada and the United States. It has been stated on reliable authority that eastern makers are offering to lay down creamery butter at Vancouver at 20c per pound. This statement is in keeping with the general conditions of the season in butter, and Manitoba merchants will require to exercise every care in buying and handling butter this year, if they are to come through the season without loss. Special care will have to be given to the matter of quality, as it will certainly be very difficult to find a market for medium and poor grades. As to prices country dealers will have to exercise great care, if they are to avoid the mistake made last year by many merchants, of paying more for butter than they could sell it for later in the season.

Handlers of butter should bear in mind that the conditions are entirely different in Manitoba to what they were a few years ago, when the province was barely able to supply itself with this commodity. With the supply hardly up to home requirements, better prices could of course be obtained, and with a light supply and high prices there was more ready sale even for medium qualities. Consumers were obliged to take what was offered, and not be too particular as to quality. But with a large surplus at home, prices tending lower and holders anxious to sell, consumers will not have inferior qualities forced upon them. They have abundance to select from and they will select the best. This applies to the local demand, and thus it is seen that even for the home trade greater care in regard to quality must be exercised.

Then a few years ago there was quite a demand for Manitoba butter from points westward in the Territories, where now the local supply is in excess of requirements. Some points which were partly supplied from Manitoba have now a surplus, and are competing with Manitoba shippers for the trade of points still farther west.

There is a limited market in the mountain towns and on the Pacific coast for butter, but there are several active competitors for this trade. In the first place we say the demand is limited, and this is evident from the fact that the total population of the district to be supplied is only in the neighborhood of 75,000. In the second place a portion of this demand is supplied by home producers of butter in British Columbia. Then during the first six months of the year, fresh grass butter from California comes into the British Columbia markets, and with a taste for this prime article acquired, it is difficult to dispose of packed butter of the previous season, even when it is of good quality, much less to induce consumers to take the ordinary dairy article. Then in the summer and fall, when there is some demand for butter in British Columbia, we have Ontario shippers to compete with. Last year Manitoba made the mistake of holding for too high prices, while Pacific coast markets were being filled up with Ontario butter. Such demand as there is in British Columbia for packed butter should be supplied by Manitoba and the Territories, but it will not do to hold for high prices, as the commodity can be shipped through to the coast from Ontario just about as cheaply as it can be sent from Manitoba. In addition to this we may add that it is useless to send anything but choice butter to the coast at any time. Considerable loss has already been experienced by dealers here through the shipment of common and medium qualities to those markets.

In a general sense there has been an improvement in the quality of butter marketed in other countries. Strenuous efforts are being made to improve the quality of butter in eastern Canada, and the same thing is true in other butter-making countries. Consumers the world over are becoming more particular in their tastes and more discriminating in regard to this article. This is shown to be the case from the fact that the large exports of butter from Canada to Great Britain have fallen away to next to nothing. The reason is that Canada has not kept pace with other countries in improving the

quality of her butter. The British consumers soon noticed this and refused to take our stuff when they could get a better article elsewhere. Our butter trade with Britain has therefore been lost, and in the present condition of the butter markets it will be almost impossible to regain it. First it will require a great improvement in the average quality, and then we will be obliged to sell at prices to successfully compete with other exporting countries.

Now as to prices, we have already intimated that indications point to unusually low values. Late Montreal advices report sales of "choice fresh creamery" at 17 to 18 cents per pound. These figures are certainly low enough. With choice fresh creamery worth 17 to 18 cents at Montreal, what is ordinary dairy butter worth in Manitoba? Certainly a long way under these quotations. Choice Eastern Townships, which ranks well up to creamery in quality, is quoted one to two cents lower, while for anything but choice it is noted that there is no demand whatever. Choice fresh western dairy was being taken at 14 cents.

Looking up Toronto markets we find choice dairy tubs quoted at 13 to 14 cents, and it is noted that a lot of old stuff had been cleared out at about 5 cents per pound.

In the United States butter prices are low in all important markets. At Minneapolis, the principal produce market for the Northwestern States, we find creamery butter quoted at 11 to 14 cents, while good to fancy dairy ranges from 8 to 12 cents. Store packed goods it is noted are going mostly into packing stock, which is in demand at 3½ to 5 cents.

The different markets quoted certainly show that values are low enough to suit the greatest butter bears. It is also everywhere reported that medium and poor qualities are not wanted at all. On the basis of values as existing elsewhere, it is questionable if Winnipeg prices are not still too high. At any rate, it would not be safe for country merchants to buy on a full parity with prices quoted here during the past few weeks. Our markets, to be on a reasonably safe basis, should be something lower than quotations in eastern Canada markets, instead of being fully as high, if not higher, when average quality is considered. If we have any considerable surplus of butter this year, it will be necessary to export a portion of it eastward, as the western trade will not absorb it all. But if prices here are higher than in the East, what position will holders be in to ship eastward? Then we have already said that Manitoba and the Territories should have all the western trade. But if prices are held higher than in the East, shippers there will be sending car lots through to the coast again, the same as they did last year. All things therefore point to the necessity of using special care this season in handling butter, both as regards quality and prices paid therefore.

### BINDER TWINE OUTLOOK.

The local situation in binder twine is somewhat interesting at present, and it seems to be the impression that there will be a lively scramble for twine before the season is over, with the prospect of a sharp advance in prices. It is a well known fact that last year's trade in twine

was very unsatisfactory for dealers. The large implement firms, who are the principal handlers of twine, secured their orders in advance from the farmers and brought in a supply of the article in accordance with their estimate of the demand. When the harvest came on, however, it was found that the quantity of twine on hand was greatly in excess of requirements. Crops turned out much lighter than expected, and many farmers throughout the country only took a small portion of what they had previously ordered from dealers. The dealers did not care to force the twine upon farmers, and by general consent decided to carry it over.

Notwithstanding the fact that twine was sold on rather a close margin last year, the local dealers decided to reduce prices about three cents per pound this year. The standard price last year was to farmers was 20 cents per pound, though there was some cutting in prices toward the close of the season. This year the price was fixed at 17 cents per pound. When it is considered that large stocks were carried over from last year, upon which interest and insurance charges have accumulated, it will be easily understood that local dealers are not making much out of binder twine this season. In fact the margin left is hardly sufficient to pay the cost of handling the article. So far as local dealers are concerned, there is practically no money in handling twine, and counting the cost of carrying last year's stock over and the cost of handling, they will do very well if they clear themselves on twine carried over. Neither will there be any money in handling new twine purchased this season, for while local dealers have reduced the price three cents to farmers, the wholesale price at the factories has actually been advanced a fraction of a cent per pound. An advance on binder twine at the factories was announced the first of this month, probably as a first result of the consolidation of the manufacturing interest.

The most interesting feature of the local situation at present is the prospect of a shortage in the supply. Crops promise to be heavy this year, and a large quantity of twine will be required. On the other hand dealers who found the trade so unsatisfactory last year, are likely to be careful in ordering this season, to avoid the possibility of last year's experience. As there is no money in handling the article any way, there is nothing to be gained by having a large stock. It is also supposed that manufacturers are not largely stocked this year, as their experience last year was anything but satisfactory, and this, with the prospect of cheaper raw material in view, would cause them to make their output rather light. It is said they have only been manufacturing to fill actual orders, while so far as local dealers are concerned, they have curtailed orders to nearly within the limits of their sales made for future delivery. In view of the present conditions it would be advisable for farmers to place their orders at once, as it is quite possible that those who delay will be obliged to pay higher prices, while those who neglect ordering until the harvest is on may be unable to obtain supplies except at very high prices, if at all. At any rate twine will certainly not be any cheaper, while an advance very shortly is within the probabilities.

# GREENE AND SONS COMPANY

WHOLESALE

Furs, Hats, Robes,

GLOVES, MOCCASINS,

Etc., Etc.

Manitoba Fall Trade, 1890



Men's Furnishings.

Sole Agents in Canada for

Dr. Jaeger's Woolen Underwear. **MONTREAL.**

## WHITEMOUTH LUMBER MILLS

David Ross,

—MANUFACTURER OF—

Spruce, Tamarac

AND

Cedar Lumber.

A Specialty made of Tamarac and Cedar Bill Stuff.

WHITEMOUTH, Man.

## GAMERON & KENNEDY

# LUMBER

MANUFACTURERS.

WHOLESALE DEALERS IN

Dressed Lumber,

SHINGLES AND LATH.

Norman, - - Ontario.

## DICK, BANNING & CO

MANUFACTURERS OF

Lumber, Shingles and Lath,

DOORS AND SASH.

MILLS AT KEWATIN. OFFICE: OPPOSITE C.P.R. PASSENGER DEPOT, WINNIPEG

## NORMAN Lumber Mills

H. BULMER, Jr.

MANUFACTURER AND WHOLESALE DEALER

Lumber, Lath, Shingles, Etc.

NORMAN, Ont.

## KEEWATIN LUMBERING & M'T'G CO'Y

(LIMITED)

MANUFACTURERS AND DEALERS IN

Lumber, Lath, Shingles, Flooring, SIDING, SHEETING, MOULDRINGS, CASINGS, ETC.

Saw Mills, Planing Mills and Factory at

KEEWATIN MILLS, Ont.

JOHN MATHER, Manager.

## G. F. SLATER,

MANUFACTURER AND WHOLESALE DEALER IN

Red Cedar Shingles

—AND—

Red Cedar Lumber

NOW IN STOCK:

3,000,000 - RED CEDAR SHINGLES.

I make a Specialty of the Manufacture of Red Cedar Lumber for Sash and Door Factories.

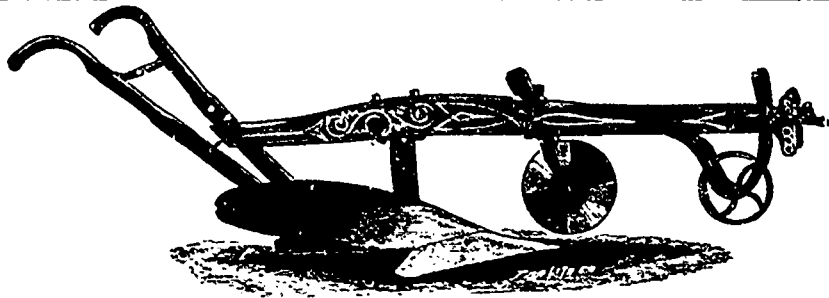
VANCOUVER, - B. C.

**PLOWS**

There is neither sense nor reason in buying United States made Plows, and paying duty on them, when we can furnish them of Canadian make

**BETTER, CHEAPER AND MORE DURABLE.**

See ours before you buy any others.



**WAGONS**

WE ARE NOW SELLING

Contractors & Teamsters

**WAGONS**

FITTED WITH THE CELEBRATED STUDEBAKER WROUGHT STEEL SKEIN

The same as used in the Finest American Wagons.

We have always on hand a large Stock of BUGGIES, CARRIAGES, BUCKBOARDS and other Wheeled Vehicles of the Finest Makes.

**R. COCHRANE & Co.**

39 and 41 Market Street West, Winnipeg.

**Pure Highland Scotch Whiskies.**

THE FAMOUS LAGAVULIN DISTILLERY, ISLAND OF ISLAY, SCOTLAND.

The Lagavulin Whisky is famous for its fine quality, being made from pure SCOTCH MALT ONLY, and has long been the favorite beverage of Sportsmen.

It contains no grain spirit, or other Whiskies one knows nothing of, and the most eminent Physicians of the day prescribe it where a stimulant is acquired.

ASK FOR THE LAGAVULIN.

MACKIE'S PURE OLD BLEND 10 YEARS OLD.

GOLD LABEL

AS PATRONIZED BY ROYALTY AND THE LEADING PHYSICIANS.

ASK FOR IT.

**JOHN McPHERSON & CO.**

MANUFACTURERS

**FINE SHOES**

HAMILTON, ONT.

**MACKENZIE & MILLS,**

**WHOLESALE GROCERS**

Special attention given to

Teas, Coffees, Canned Goods,

DRIED FRUITS, Etc.

CORNER KING AND ALEXANDER STREETS

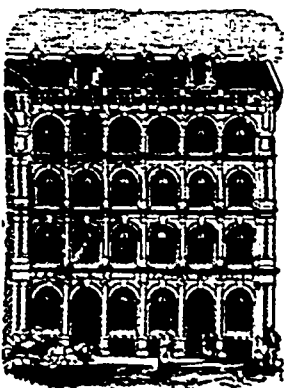
WINNIPEG, MAN.

**W. GRANSTON,**

Picture Frame and Moulding Manufacturer,

504 Main Street,

Winnipeg, Man.



**E. A. SMALL & CO.**  
MANUFACTURERS OF CLOTHING  
WHOLESALE.

Albert Buildings,  
Victoria Square, MONTREAL.

Represented by WM. H. LEISHMAN,  
Sample Rooms, Nos. 30 and 32 McIntyre Block,  
Winnipeg, Man.

**McALPINE TOBACCO CO.**

TRY OUR

**"SILVER ASH"**

Cut Smoking.

A Strong, Mellow and Lasting Smoke in 10 CENT PACKAGES.

—ALSO OUR—

**"Standard Kentucky"**

FINE CUT CHEWING

The Superior of any Cut Chewing Tobacco in Canada.

WORKS: NEW YORK CITY, AND

ESPLANADE, TORONTO

**WINNIPEG MONEY MARKET.**

The amount of mercantile paper falling due the early part of this month has not been heavy, but such as it is a large portion has gone to renewal, and among this number some rather heavy notes are spoken of as having been renewed in full. The only hope at present is in futuro prospects, and until a return can be received from the crops, there will be nothing but to grin and bear it. This the trade is evidently doing in as philosophical a way as possible. Discounts held at 7 to 8 per cent. for choice to good commercial paper. A large number of loans on farm property are reported by the loan companies. They are nearly all for small amounts, and the rate for such holds steady at 8 per cent. About 6½ per cent. is now near the standard rate for loans on good Main street city property, while occasionally loans negotiated at a fractional lower rate are heard of. Advances on the security of other city property are generally made at 7 per cent.

**WINNIPEG WHOLESALE TRADE.**

The features of wholesale trade last week were a steady feeling, without any great activity in any branch, but a fairly satisfactory movement in most lines. There has been a fairly good trade in lumber and building supplies, hardware, etc., with if anything a firmer feeling in the former. In implements there has been quite a heavy demand for hay harvesting machinery, which promises to even exceed the supply of those goods. In other branches the features are unimportant. The produce markets show an increase in the supply in cheese, meats, stock, hay, vegetables, etc., and a general tendency to lower prices, some commodities making sharp declines.

**AGRICULTURAL IMPLEMENTS.**

The feature in this branch is a brisk demand for mowers and hay rakes. The trade in these articles this season is very large, and there is some prospect that the demand may exceed the supply. This would indicate that a large cut of hay will be made. The high prices which have ruled for hay the past winter and spring will no doubt have the effect of inducing a good many to go into the business of putting up hay. As to binders there is considerable disposition to hold back orders as late as possible. A good deal of interest is being taken in the question of press drills. These drills had a very large sale in Manitoba last spring, though up to that time they had been almost unknown in the country, and had not received anything like a thorough practical test as to their value. The number in use this year, however, is sufficient to decide the value of the implement. Upon this point there is still a good deal of doubt. While the implement has its friends, there are also those who claim that it has not been a success, and that in damp soil at least it cannot be made to work satisfactorily.

**DRIED FRUITS.**

Prices hold steady. Some minor changes in quotations will be noted this week. Prices are: California London layer raisins, \$3.00 per box, do. ½ boxes, \$1.00; Valencia raisins, \$2.80 to \$2.90 per box; Valencia layer raisins, \$3.25 per box; currants, 7c per lb.; dried apples, 7½ to 8c per lb., evaporated apples, 14½c; choice new Elme figs in 10 lb. boxes, 16c per lb.; choice figs, 13c per lb.; fancy Elme layer figs, 20 lb boxes, 18c per lb.; figs in 1 lb cartons, per doz., \$1.75;

golden dates, in 50 lb. boxes, 9c per lb.; California evaporated fruit—apricots, 22 to 24c per lb.; peeled peaches, 27 to 30c per lb.; pitted plums, 13c; raspberries, 35c; prunes, 7½ to 11c per lb. as to quality, the higher quotation for choice of best varieties; nectarines, 21 to 23c.

**DRUGS.**

Business is keeping fairly brisk in this branch, but without change of prices in staples. Quotations here now are as follows: Howard's quinine, 60 to 75c; German quinine, 50 to 60c; morphia, \$2.25 to \$2.50; iodide of potassium, \$4.25 to \$4.75; bromide potassium, 65 to 75c; English camphor, 80 to 90c; glycerine, 30 to 40c; tartaric acid, 65 to 75c; cream of tartar, 35 to 40c; bleaching powder, per keg, \$6 to \$8; bicarb soda, \$3.75 to \$4.50; sal soda, \$2.50 to \$3; chlorate of potash, 25 to 30c; alum, \$4 to \$5; copperas, \$3 to \$3.25; sulphur flour, \$4 to \$5; sulphur roll, \$4.50 to \$5; American blue vitrol, 10 to 12c.

**FISH.**

Stocks of fresh fish have been light, and the variety in the market limited, as dealers have to be careful owing to the hot weather in handling fish. The following varieties are quoted: Salmon, 15c a pound; jack-fish, 1c; pickerel 3c; Lake Superior trout, 10c; smoked goldeyes, 40c per dozen; salt whitefish, \$5 per 100 keg.

**GREEN FRUITS.**

Fruits were beginning to come in more freely last week, and toward the close of the week the market was fairly well stocked. California fruits arrived in considerable quantity, but a good deal of these are over ripe for re-shipping a distance. Native wild strawberries have been offered in large quantities on the market at \$1.50 to \$2.25 per pail. A few blueberries have arrived; also new apples. Oranges are firm and quotable higher again. Lemons also continue to advance. The hot weather has caused a regular "boom" in lemons, and all leading markets report a heavy sale, often the demand being in excess of supplies, consequently there have been sharp advances in prices, sales an \$8 to \$10 per box having been made in some eastern and southern markets. The demand has been unprecedented, and holders of lemons in large markets have made good money. Watermelons are lower. Quotations are:—Rodi oranges, 200 size, \$8.50 per box; do. 300 size \$9.50 per box; Messina lemons, \$8 to \$9 per box; Bananas, yellow, \$3 to \$3.75; do., red, \$2.75 to \$3.50; tomatoes, \$2.50 per crate of 25 pounds; watermelons, \$6 to \$7 a dozen; strawberries, \$3.00 to \$3.75 per crate of sixteen quarts. California fruits are quoted: Peaches, \$3.50 box; apricots, \$3.25 per crate.

**GROCERIES.**

The sugar market holds very steady. Willett & Gray, of New York, in their last weekly review of the market say: "Refined unchanged. Raws declined 1-16c. Meltings for the month of June were 120,472 tons, against 104,016 tons last June, and 94,182 tons in June, 1888. The meltings for the six months have been 42,105 tons more than same time last year, which increase has increased refiners' profits. The past week has been quiet and steady with nothing of special interest for or against the market. Total stocks in all countries indicate a full supply of sugar yet remaining say 1,020,000 tons, against 667,722 tons at same time last year. Growing crops are thus far reported in favorable condition." In teas some figuring

is now being done on new crops, though there is nothing of course in the market yet. The arrival of some samples of new teas is reported from some markets. New pack of canned goods in some lines, such as lobsters, strawberries, etc., are now being offered. Quotations are as follows: Sugars, yellow, 6½ to 7c as to quality; granulated, 7½ to 8; lumps, 8½ to 9c. Coffees, green,—Rios, from 24 to 25c; Java, 27 to 29c; Old Government, 29 to 32c; Mochas, 33 to 35c. Teas: Japan, 23 to 46c; Congous, 22 to 60c; Indian teas, 33 to 60c; yound hyson, 26 to 50c. T. & B. tobacco, 56c per pound; lilly, 7s, 52c; diamond solace, 12s, 48c; P. of W., butts 47c; P. of W., caddies, 47½c; Honeysuckle, 7s, 55c; Brier, 7s, 53c; Laurel Bright Navy, 3s, 56c; Index d thick Solace, 6s, 48c; Brunette Solace, 12s, 48c. McAlpine Tobacco Co's plug tobacco: Old Crow, 46c; Woodcock, 52c; Beaver, 63c; Jubilee, 60c; Ancho, 59c; cut tobacco: Silver Ash, 65c; Cut Cavendish, 70c; Senator, 80c; Standard Kentucky, light, 85; do dark, 80c. Special brands of cigars are quoted: Reliance, \$30; Gen. Arthur, \$50; Mikado, \$10; Terrier, \$30 per 1000. Mauricio, \$12.50; Soudan Whips, \$40.00; Turkish Caps, \$35.00; Commercial Traveller, \$25. Lion "L" brand mixed pickles, in kegs, are quoted: Three gallons, \$2.50; do five gallons, \$3.50; do 10 gallon kegs, \$6.50.

**HARDWARE.**

A fair movement is reported in this branch, but with the usual grumbling about collections. Quotations are steady being: Cutnails, 10d, and upwards, \$3.30; I. C. tin plates, \$6 to \$6.50 as to grade 1.; C. tin plates double, \$12.00 to \$12.50; Canada plates, \$4 to \$4.25; sheet iron, \$4.25 to \$5.50, according to grade; iron pipe, net pieces, 1 inch, 11.20c; 1½ inch, 14½c; 2 inch, 18½c; 2 inch, 28c per foot; ingot tin, 32c per lb; bar tin, 33c per pound; sheet zinc, 8c per lb.; galvanized iron, 28 guage, 7½ to 8½c lb; bar iron, \$3.60 per 100 lbs; shot, 6½ to 6¼ per lb.; tarred felt \$2.40 to \$2.50 per 100 lbs.; barbed wire, 6½ nett.

**LEATHER, LEATHER GOODS AND FINDINGS.**

The feature in leather is the sharp advance which has taken place in hides, rendering the price of leather proportionately very considerably below that of the raw material. While hides have advanced in eastern markets from 50 to 75 per cent., leather has advanced only about 10 to 15 per cent. This situation would indicate higher prices for leather soon. Locally prices are unchanged as follows: Spanish sole, 26 to 28c; slaughter sole, 26 to 30c; French calf, first choice \$1.25 to \$1.50; Canadian calf, 75c to \$1.00; French kip, \$1 to \$1.10; B Z kip, 85; Bourdon kip, 70c; slaughter kip, 55 to 65c; No. 1, wax upper, 40 to 45c; grain upper, 50c; harness leather, 26 to 29c for plump stock. English oak butts, 60c; buffe, 17 to 21c a foo.; cordovan, 17 to 21c; pebble, 21c; colored linings, 12c; shoe uppers, from \$1.25 to \$2.75. Horse collars—Short straw, \$22 der dozen; long straw, \$33 per dozen; long straw bodies, \$22; Boston team (thong), \$27 der dozen.

**LUMBER.**

There is no further change to note in lumber, though a firmer feeling in prices is reported. List prices f.o.b. at the mills, however, still hold as follows: Dimension, 2x4 to 12x12, 12 to 16 ft long, \$14; do. 10, 18 and 20 ft long, \$15; \$1 per M advance on each inch over 12in surface; 50c per M on each foot over

the above lengths to 24ft long; \$1 per M advance on each foot over 24ft long; surfacing, 50c per M; surfacing and sizing, \$1 per M. Boards: 1st common, rough, \$16.50, dressed, \$17.50; 2nd common, rough, \$14, dressed, \$15; Culls, rough, \$10, dressed, \$11; 1st common, stock, 12in, rough, \$19, dressed, \$20; do. 8 and 10in, rough, \$13, dressed, \$19; 2nd common, stock, 12in, rough, \$16, dressed, \$17; do. 8 and 10in, rough, \$15, dressed, \$16; 10ft long and under, \$1 less per M. Shiplap: 10in, \$16; 8in, \$15.50; 8 and 10in flooring and siding at \$1 per advance. Siding, ceiling and flooring: 1st, 6in, \$29; 2nd, 6in, \$25; 3rd, 6in, \$21; 4th, 6in, \$18; 1st, 5in, \$29; 2nd, 5in, \$25; 3rd, 5in, \$20; 4th, 5in, \$17; 1st, 4in, \$29; 2nd, 4in, \$23; 3rd, 4in, \$19; 4th, 4in, \$16; \$1 per M advance for dressing on both sides; \$1 per M less for lengths 10 feet and under. Bovel Siding: No. 1, 1st siding,  $\frac{1}{2}$  in x 6 in, \$20; No. 2, 2nd siding,  $\frac{1}{2}$  in x 6 in, \$17. Finishing ( $\frac{1}{4}$ ,  $\frac{1}{2}$  and 2in): 1st and 2nd clear, \$45; 3rd clear, \$40; selects, \$30; shop, \$25; 1 inch, 1st and 2nd clear, \$40; 3rd clear, \$32; No. 1 stock, \$35; No. 2 do. \$30; No. 3 do. \$25. Mouldings: window stops, per 100 ft lineal, \$1; parting strips, do, 60c;  $\frac{1}{2}$  round and cove, do., 75c. Casing: 4 in O G, per 100 ft lineal, \$1.75; 5in O G, do, \$2.25; 6in O G, do, \$2.50; 8in O G, base, do, \$3.50; 10in O G, base, do, \$4.25. Lath, \$2. Shingles: No. 1, \$3; No. 2, \$2.50; No. 3, \$1.50; No. 4, \$1.

#### PAINTS, OILS AND COLORS.

The principal feature of interest is centred in linseed oil, which is in good demand, and as the local mill has been closed for some time, there is difficulty at times in keeping up the supply. Car lots are arriving almost daily, and prices fluctuate some according to the supply on hand. It may be stated as firm at quotations, which are the same as given last week, though higher prices have been asked at times. In other commodities business is dull. Turpentine is firm at the late advance, and these prices are expected to hold for some time. White lead is easier, and quoted 25c lower this week on all brands. Glass is reduced also to \$2.10 for first break. The quotation of \$3.25 on Michigan plaster can be shaded for round lots. Prices are: Turpentine in barrels, inscribed gage 78c per gallon; turpentine in barrels, guaranteed measurement, or in 5 gallon cans, 83c gallon; linseed oil in barrels, raw 81c; boiled 84c; benzine and gasoline, 50c; pure oxide paints, in barrels, 90c per gallon; coal tar \$6 a barrel; Portland cement, \$4.90 a barrel; Michigan plaster, \$3.25 a barrel; putty, in bladders, 3 $\frac{1}{2}$ c a pound, bulk in barrels, 3c; whitening in barrels, \$1.50 a cwt; Crown pure white lead, \$7.25; Royal Charter, \$6.75; Railroad, \$6.25; Elephant pure white lead, \$7.25; Elephant No. 1. do., \$6.25; Balls head do., \$5.75; Calsomine, \$6 per 100 pounds; Alabastine, \$7.25 per case of 20 packages. Window Glass, first break, \$2.10.

#### WINES AND LIQUORS.

Quotations are unchanged and as follows: Canadian rye whiskey, five year old, \$2.40; seven year old, \$3; old rye, \$1.75; Jules Robin brandy, \$4.50; Bisquet Debonche & Co., \$4.50; Martel, vintage 1885, \$6.50; vintage 1880, \$7.50; Hennessy, \$6.50 to \$7.50, for vintage 1855 to 1880; DeKuyper gin, \$3.50; Port wine, \$2.50 and upwards; Jamaica rum, \$4 to \$4.50 DeKuyper red gin, \$12.00 per case; DeKuyper green gin, \$7.00 per case; Tom gin, \$9.00 to \$10.00; Martel and Hennessy's brandy, one star, \$15.00 per case of 12 bottles; v. o., \$20 00; v. s. o. p., \$22.50.

## WHOLESALE PRODUCE MARKETS.

### WINNIPEG.

#### WHEAT.

The principal interest in wheat is still centred in the crop prospect. The July winter wheat report of the United States Department of Agriculture represents the crop as harvested in all but its more northern latitudes. It shows some advance in the condition where it was the lowest in June, in Michigan, Indiana, Illinois and Missouri, and a slight decline in Ohio, Kentucky, the Pacific coast and in the Southern States. The general average is 76.1, against 78.2 last month, and the reduction is mostly in non-commercial districts. The commercial-supply States, taken together, make nearly the same average as in June. The spring wheat average has advanced from 91.3 to 91.4. The averages of the principal States are as follows: Wisconsin, 93; Minnesota, 98; Iowa, 99; Nebraska, 88; the Dakotas, 94; Montana, 93; Colorado, 90; Washington, 93. Taken together, winter and spring wheat make an average of 87.1, instead of 82.4 last month. Returns from the south are very unfavorable, indicating scarcely more than half a full crop. The vitality of the crop was greatly impaired by March frosts. After the injury from frost that followed the growth of the mild winter, the crop fell an easy prey to all the plagues that infest it. A heavy reduction in the condition during June is reported in Kentucky. The yield and quality, as tested by the thresher, are worse than was anticipated. The plant is thin on the ground, heads light and the berry shriveled. Ohio and West Virginia make slight reductions, winter killed areas disappointing expectations, while unscathed fields yield sound and plump grain. In Michigan, Indiana, Illinois, Missouri, and Kansas the least injured fields manifestly improved during the last month and promised better results in threshing. The average was slightly advanced in all of these states. Some counties in Kansas claim 16 bushels, some 20 per acre, and one reports the best crop ever known in quality and yield, while others admit damage and disappointment.

One of the most favorable features so far as wheat prices is concerned, is the recent move in flour. United States markets report a steady improvement in the demand for flour, both for export and domestic trade. The situation in leading wheat markets was uneventful last week. There were several ups and downs in prices, but closing figures did not vary materially on an average.

#### FLOUR.

Remains steady. Locally the situation is unchanged, with jobbing prices here as follows: Patents \$2.70; strong bakers, \$2.50; XXXX, \$1.30; superfine, \$1.15; middlings, \$2.70; Graham flour, \$2.50 per 100 pounds.

#### MILLSTUFFS.

There has been a decline in millstuffs, prices having dropped \$1 last week, the abundance of new hay decreasing the demand for feed of this nature. Bran is now held at \$9, and shorts at \$11 per ton. Corn and oat chop is jobbing in small lots at equal to \$21 per ton.

#### MEALS.

Prices are unchanged as follows: Oatmeal, standard, \$2.60; granulated, \$2.65 per 100 lbs.; rolled oats, \$2.75 per sack of 90 lbs. Rolled oats are also obtained in 50 lb sacks at \$2.65. Cornmeal is held at \$1.50 per 100 lbs.

#### OATS.

The demand for oats is rather dull. The ad-

vance east has stopped shipments from Ontario, and importations are now about all from the south. Cars on track are held at about 47c, while small jobbing lots are going at 48c to 50c per bushel.

#### BEANS AND SPLIT PEAS.

White beans are jobbing at \$2.25 per bushel in small lots. Split peas are held in the same way \$2.75 per 100 pounds.

#### CHEESE.

This product is still bringing a good price, jobbing lots moving at 10 $\frac{1}{2}$  to 11c per pound, and round lots quoted at 10c. Factories have been getting good prices so far, as the market has been rather bare; but the prospect is for lower rates.

#### BUTTER.

The quantity of butter being received in the city cannot be said to be large, but the demand is very slow. The city retail trade is supplied to a considerable extent by farmers, which reduces sales through jobbers. Sales in small lots to the city trade have been made at 13 to 15c per pound, with 14c the usual price for good dairy, though some very fair quality has been turned over at 13c. Prices are decidedly in favor of buyers, and the latter often have the fixing of prices at their own figures. There is still quite a quantity of old butter held, for which holders are anxious to find a market at mostly any figure. A sale of a round lot was reported at about 8c, which cost the holder about 15c on an average. The tendency is toward lower values. New Ontario butter is now being offered in British Columbia markets, and if Manitoba is to secure even a considerable portion of this trade, it will have to be at very low prices. If we cannot hold the western trade to relieve the province of the surplus, the outlook will not be very encouraging.

#### EGGS.

The supply of country eggs coming in from day to day is barely equal to the daily demand, and stocks are occasionally supplemented by importations from the south. The heavy falling off of receipts of country eggs in this market this season, as compared with former years, is one of the remarkable features of the trade, for which it is difficult to account. In past years a large quantity of eggs have been packed every spring for use the following winter, while this year the supply has hardly exceeded the daily demand at any time, and for a good portion of the season importations from the south have been coming in to make up the deficiency in the local supply. This means that very few eggs have been packed for winter use and that prices will be high for some time in the future, probably until next spring. After this date any considerable increase in receipts is not expected, and the packing season is practically past. Jobbing prices are at 14 to 15c per dozen, fresh local bringing the best figure usually.

#### LARD.

Unchanged at \$1.25 per pail of 20 pounds.

#### CURED MEATS.

There is practically nothing in the market in the way of home cured goods. Packers have not done anything this season, as the supply of hogs has never been in excess of requirements by butchers, and prices have been too high for packing. Nothing is likely to be done before fall by local packers, as by present indications there will be no material to work on before that time. Imported goods are offering freely at the following prices: Dry salt bacon, 10c; smoked long clear, 11c; spiced rolls, 12c; boneless breakfast bacon canvassed, 13 to 13 $\frac{1}{2}$ c; smoked hams plain, 13 $\frac{1}{2}$  to 14c; canvassed, 14 $\frac{1}{2}$ c. German sausage, 9c lb.; Bologna sausage, 8c lb.; ham, tongue and chicken sausage, 9c per  $\frac{1}{2}$  pound package.

#### DRESSED MEATS.

The supply of beef is gradually becoming more liberal, and prices are declining at about the same ratio. Offerings are now quite large, but the quality is still inferior, being usually on the thin side. However, with the good feed now existing, it is expected that a couple of

- : - WE HAVE BEEN APPOINTED AGENTS - : -

— FOR —

Manitoba and the Northwest Territories

— FOR —

# Upjohn's Pills.

**THE MOST READILY SOLUBLE PILL MADE IN THE WORLD.**

Put up in bottles of 100 and 500 each. Pill lists sent to druggists on application.

Our Stock of Patent Medicines is also very complete.

**DAWSON, BOLE & CO.,**

60 Princess Street, - WINNIPEG.

weeks will show a decided improvement in the quality. Prices show a further decline on beef of about 3c, with jobbing prices at 6½ to 7c, and an easier tendency still existing. Mutton is now the most difficult article to obtain. No imported sheep have been brought into the country this year, and dealers have been depending upon the local supply, which is hardly sufficient for requirements. This is the first season in which the local supply of mutton has not been supplemented by importations of sheep from the south. Mutton is jobbing at 12 to 12½c. Pork is still on the scarce side and jobbing at 8 to 8½c. Veal is plentiful at 6 to 7c.

**POULTRY AND GAME.**

Chickens are offering fairly liberally, at 50 to 60c per pair. Turkeys are worth about 12c live weight.

**LIVE STOCK.**

Cattle are now offering more liberally, but there is room for considerable improvement in the average quality. Prices are declining. One sale of a picked lot was reported at 3½c per pound live weight, while the balance of the lot went at 3c. Really good beef cattle are scarce indeed, but for such as are offering 3 to 3½c is about the present range of values.

**HAY.**

There has been a further heavy tumble in the price of hay. The high prices have drawn out large offerings of new hay, until the supply has been in excess of the demand. Prices for new loose hay on the market have declined to \$5 to \$8 per load, the variation being due to quality and the desire to sell, the loads being equal to about a ton. There is still considerable old baled hay held here, which has been shipped in from the south to sell, and holders of this were offering at \$8 per ton for cars on track, which shows a big tumble in values, as it is not much more than the cost of freight and duty on the article. Buyers will not take new hay in excess of their immediate requirements, as it is hardly yet in safe condition to hold for any

length of time. It is therefore to be hoped that the cut will not be in excess of immediate wants, as cutting so early injures the ground for a crop the following year.

**SENACA ROOT.**

There have been two or three drops in the price of this commodity of late, owing, it is said, to the very large supply gathered this season. It is estimated that about 50,000 lbs. have been gathered in Manitoba this spring, while both the spring and fall gathering last year did not quite equal this amount. The estimate above includes what is still supposed to be held in the country, and is, of course, only an approximation. The commodity is now quoted at about 20 to 22c per pound, or about 5c under earlier prices of the season.

**VEGETABLES.**

The market is now fairly well supplied with home grown green stuff, though some varieties are still being imported. Gardens in the vicinity of the city are looking remarkably well, and there is every prospect of an abundant supply of all varieties of vegetables. Vegetation is perhaps a little later than usual, but is coming on very fast. Prices are: Old potatoes easier and offering on the market at 40 to 50c per bushel. New potatoes, imported, are now coming in in car lots, and are declining in price. The latest quotation for these was \$1.50 per bushel. Cabbage quoted at 7c per lb.; cucumbers, 75c per dozen; tomatoes, \$2.50 per crate of 25 lbs.; celery, 50c per dozen heads; onions, \$7.50 per barrel for new imported southern. Green stuff in bunches is quoted: Radishes, 25c per dozen bunches; beets, 40c; lettuce, 15c; green onions, 20 to 25c; rhubarb, 25c, all by the dozen bunches. Cauliflower are beginning to come in, but are rather poor yet.

**HIDES.**

Eastern advices reported a sharp advance in hides of 1 to 1½c per pound. This advance is reported to be due to extreme competition, and not to healthy reasons commercially. This

would seem to be the case from the fact that leather is proportionately very considerably below a parity with hides, and unless leather advances hides must come down. In the local market prices are unchanged. Heavy steers are still quoted at 5c per pound for No. 1, and cows at 4½c for No. 1. For No. 2, 3½ to 4½c is quoted, and 2½ to 3c for No. 3. Calfskins, No. 1, 5c; No. 2, 4c. Sheepskins, 50 to 85c. Tallow, 2½c for rough and 4½ to 5c for rendered.

**WOOL.**

Wool is coming in freely and brings 10½c for ordinary unwashed, with pure Southdown or Shropshire bringing 11 to 12c per pound unwashed. Unwashed western fine wool brings 12½ to 13c. Washed wool is quoted at 13½ to 14c for ordinary, though for the latter higher prices have been paid.

**Smith & Fudger,**  
50 YONGE STREET, - TORONTO.

— WHOLESALE —

**Fancy Goods, Woodenware,**

Our Mr. W. H. Smith will be at the Queen's Hotel, Winnipeg, early in July, with a full line of Samples, comprising

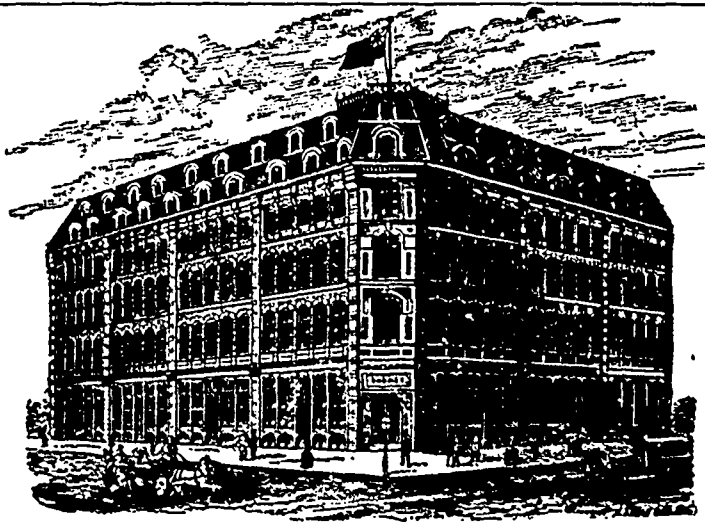
**STAPLES AND NOVELTIES**

Selected by our buyer who has just returned from the European markets.

The Trade are respectfully requested to hold Orders until our assortment is seen.

**SMITH AND FUDGER,**  
TORONTO.

MEN'S BOYS' AND YOUTHS' CLOTHING  
CHILDREN'S CLOTHING A SPECIALTY.



Our Samples for the Autumn and Winter  
Season, 1890, are now on view at 210  
Portage Ave. (Rowan block), Winnipeg.

**H. SHOREY and CO.,** WHOLESALE CLOTHIERS,  
1866, 1868 and 1870 Notre Dame and 36, 38, 40 and 42 St. Henry St., MONTREAL.



**TASSE, WOOD & CO.**

Manufacturers of

**Fine Cigars,**  
MONTREAL.

Our Brands: { Reliance Terrier,  
Mikado and General  
Arthur.

Are unsurpassed by any in the Dominion

Ask your Wholesale Merchant  
FOR THEM.

**JAMES HAY & CO.**

—WHOLESALE AND RETAIL—

**FURNITURE**

**CHILDREN'S CARRIAGES.**

REED AND RATTAN.

298 MAIN STREET, { CATALOGUES AND PRICE LIST  
SENT ON APPLICATION. } WINNIPEG.

**MUNROE & CO.,**

Wholesale Dealers

**Wines, Liquors and Cigars**

OF THE BEST BRANDS

9th STREET, - BRANDON

**Allen & Brown,**

PORK PACKERS,

For Fine Hams, Bacon, Rolls, Long Clear,  
Mess Pork, Lard, Bologna and Pork  
Sausage Casings, &c., &c.

ALL GOODS GUARANTEED.

70 McDERMOT STREET. - WINNIPEG.

**J. Y. GRIFFIN & CO.**

Pork Packers and Wholesale  
Provision Merchants,

137 Bannatyne St. East, - - WINNIPEG.

Mess Pork, Long Clear Breakfast and Roll  
Bacon, Hams, Lard, Butter,  
Cheese, Eggs, Etc.

Cash paid for Eggs (egg cases supplied) Con-  
signments of Butter or other Farm Produce  
solicited and carefully handled. Ample Stor-  
age Capacity. Correspondence Invited.

**OUR IMITATORS.**

Owing to certain dealers attempting to  
pull off on the public the products of other  
makers, and representing them to be ours  
to the injury and reputation of our goods,  
we have issued the following :-

**CAUTION TO THE TRADE**

Merchants are respectfully ad-  
vised that hereafter all gloves of  
our manufacture will be STAMPED  
or bear a SILK WOVEN Label as below



TRUE BUSINESS PRINCIPLE,

Buy and Sell for Cash!

Provisions and Staple Groceries  
Lower than any House in  
the Trade.

WHOLESALE ONLY.

SEND FOR QUOTATIONS.

**A. McDONALD AND CO.,**

228 Main Street, WINNIPEG.

**Joseph Carman,**

—WHOLESALE DEALER IN—

Fruits, Vegetables, Butter,

EGGS, CHEESE, HONEY, Etc., Etc.

Will be receiving car weekly new Vegetables  
of all kinds. California and other Fruits by  
express three times a week. Write for prices  
21 Alexander Street West, - - WINNIPEG.

J. S. NORRIS.

JAS. CARRUTHERS.

**NORRIS & CARRUTHERS,**

WHEAT EXPORTERS,

TORONTO and MONTREAL

Open to buy Wheat f.o.b. Cars at any  
Station or delivered at Port Arthur  
on Sample or Inspector's Certificate.

**J. S. CARVETH & CO.,**

**PORK PACKERS**

Sugar-Cured Hams, Breakfast Bacon, Spiced Roll,  
Pure Pork Sausage, Long Clear Bacon, Bologna  
Sausage, German Sausage, Ham, Tongue  
and Chicken Sausage.

Figs Feet, Bologna and Sausage Casings.  
PACKERS AND COMMISSION MERCHANTS.

23 Jemima St., WINNIPEG.

Chicago Board of Trade Prices.

A sharp advance in wheat was the only noticeable feature in Monday's market, caused by wet weather news from Europe. A gain of 2 to 2½c was made. The market was active and strong on the upturn. July had a range of 87½ to 89c; August 89 to 90½c, and September 89½ to 91½c. The corn market was greatly excited also, opening wild with a big demand, and heavy buying on all futures. A moderate trade was done in provisions, offerings being higher than for some time. Closing prices for futures were:—

	July.	Aug.	Sept.	Oct.
Wheat.....	88½	90	90½	—
Corn.....	36½	37½	37½	—
Oats.....	23½	27½	27½	—
Pork.....	12.25	11.82½	11.70	—
Lard.....	5.77½	5.87½	6.00	6.07½
Short Ribs.....	5.17½	5.22½	5.35	5.40

Wheat moved within a narrower range on Tuesday and the market was not nearly so active. A nervous feeling was noticeable all day. Prices fluctuated within a range of 1c. Outside news were mostly bullish in tenor, but not wholly so. The oat market was quiet and weakened considerably towards the close of the session. Closing prices were:—

	July.	Aug.	Sept.	Oct.
Wheat.....	88½	89½	90½	—
Corn.....	36	36½	37½	37½
Oats.....	23	27½	27½	—
Pork.....	12.20	11.75	11.70	—
Lard.....	5.77½	5.87½	6.00	6.10
Short Ribs.....	5.15	5.20	5.30	—

Wheat sold lower on Wednesday to the extent of ½c. Cooler weather and rains in the east, caused the drop. Some heavy selling was done just before the close of the market which was an additional cause for the weakness. A fair trade was reported in the market for hog products. While prices averaged a little lower, there was rather more steadiness to the market at the decline. Receipts of hogs were quite liberal. Closing quotations for futures were:—

	July.	Aug.	Sept.	Oct.
Wheat.....	87½	89½	89½	—
Corn.....	36½	36½	37½	38½
Oats.....	23	27½	27½	27½
Pork.....	12.15	11.70	11.60	—
Lard.....	5.77½	5.87½	6.00	6.10
Short Ribs.....	5.10	5.15	5.25	5.30

The wheat market was quiet on Thursday. The principal feature of the day's business was the unusual activity in corn. Numerous reports of damage to the crops kept coming in all day and for a time the excitement was intense. In spite of the heavy trading done, the closing quotations for September, which seems to be the favorite month, was only ½c higher than Wednesday's close. Oats sold higher, in sympathy with corn, but only a light business was done in them. Closing figures were:—

	June.	July.	Aug.	Sept.
Wheat.....	—	88	89½	90
Corn.....	—	37½	37½-37½	38½
Oats.....	—	25½	28	27½
Pork.....	—	11.60	11.60	11.25
Lard.....	—	5.77½	5.85	5.97½-6
Short Ribs.....	—	—	5.12½	5.22½

On Friday wheat opened strong and higher, but broke later in the day fully 2c from the highest point and closed ½c lower than Thursday. The crop news was decidedly bullish all day. Closing quotations for futures were:—

	June.	July.	Aug.	Sept.
Wheat.....	—	87½	88½	89½
Corn.....	—	36½	37½	37½-38
Oats.....	—	29	28½-28	28½-29
Pork.....	—	11.00	11.00	11.15
Lard.....	—	5.07½	5.85	5.97½
Ribs.....	—	5.00	5.10	5.20

Toronto Markets.

Flour—In good demand and firm. Millers' brands sold at \$4.60 for straight roller.

Bran—Sellers at \$10.25.

Wheat—Firm and in good demand. All outside markets higher. No. 2 white, north and west, held at 96 to 97c, with buyers at 95c. Spring sold at 93c on the Midland and at 96c here in the early part of the day, but later there was a report of a 58-pound lot at 95c, and it is doubtful if buyers could have obtained any more at less than that figure late in the day. Manitoba wheat opened 1c higher at \$1.17 for No. 1 hard, and at the close holders wanted \$1.18 in sympathy with the advance in Duluth. No. 1 hard Duluth would now cost \$1.17½ laid down here.

Oats—Quiet at 41 to 41½c for mixed cars on track.

Provisions—Mess pork, \$16.00 to \$17.50; bacon, long clear, per lb., 8½c to 8¾; lard, tubs and pails, 9½ to 9¾; hams, per lb., 11½c to 12½c; rolls, per lb., 9½ to 9¾.

Butter—Receipts were fair and the market was barely steady. The range of prices was from 12 to 15c. for medium to choice sweet tubs. Most of the sales were made at 13 to 14c. A lot of selected old sold to the local trade at 8c in tubs. Cheese, new, sold at 9 to 9½c.

Dried apples—There are very few sales reported; dealers are paying 4½ to 5½c, and selling at 5½ to 5¾c. Evaporated scarce and firm at 11 to 12c for old, and 12 to 13c for new.

Hides and skins—Dealers are paying butchers 6c for No. 1 cows and are selling average weights of cured at 6½ to 6¾c. Skins firm at 30c for pelts and 50c for lambs.

Wool—Buyers are paying 21c for average quality fleece.—*Empire*, July 5.

Montreal Stock Markets.

Following were closing quotations on July 11th:

Banks.	Sellerr.	Buyers.
Bank of Montreal.....	223	222
Ontario.....	120	116
Nolson's.....	170	160
Toronto.....	216	212
Merchants.....	145½	143½
Union.....	—	90
Commerce.....	130	129½

Miscellaneous.

Montreal Tel.....	98½	97
Rich. & Ont. Nav.....	62	61
City Pass. Ry.....	195	193½
Montreal Gas.....	206	205½
Canada N. W. Land Co.....	75	70
C. P. R. (Montreal).....	82½	81½
C. P. R. (London).....	—	83½
Money—Time.....	7	—
Money—On call.....	5½	—

Minneapolis Market.

Following were the closing wheat quotations on Thursday, July 10:—

	July.	Aug.	Sept.	On track
No. 1 hard.....	88	89	88	91-92
No. 1 northern.....	86½	87	86	88
No. 2 northern.....	82	83	82	82-84

The feeling in wheat was quite bullish at times, with other periods of weakness, but trading was light about all day. The government report was waited for as it has in the past been noted for considerable change following it. The inquiry for cash wheat and the brighter outlook in the flour markets caused a wholesome fear of going short.

Flour—The demand for flour was still good

and for bakers' active. The higher grades of patents ranged from \$4.60 to \$4.90 in quotations sent out, second patents from 50 to 70c under, while bakers' were quoted at \$3.35 to \$3.85 and low grades at \$1.30 to \$1.75.

Bran and Shorts—Business was steady and in fair form. Bran that was "specky" sold at about \$7.75 with better qualities in some cases held up to \$8.50 and even \$8.75. Still good bran was offered by others at \$8 to \$8.50. Shorts went at \$9.50 to \$10.25 and middlings \$10.50 to \$11.

Corn—There was a firm feeling caused by something of a general advance and the most of the corn held here was held strongly at about 34c though buyers were not inclined to pay the advance.

Oats—The late offerings had been smaller and prices were rather firm for fine stock. The range of samples was mainly from 27 to 28½c on track.

Hay—Considerable poor hay offered that was not saleable at satisfactory figures, good new hay that was not heating was worth about \$7 to \$8 with choice old \$7 to \$7.50 and some poor hardly wanted.—*Market Record*.

Prices at Vancouver.

The latest quotations in the local market were as follows: Flour, Manitoba patent \$6.50 per bbl.; Manitoba bakers, \$6.00; Oregon, \$5.25; California, \$5.50; Premier, \$5.90; Graham, \$6; bran, \$25 per ton; shorts, \$27 per ton; wheat, \$37; corn, \$35; oats, \$45; chopped feed, \$35; oatmeal, granulated, per sack, \$3.50; standard, \$3.40; rolled oats, per bbl., \$7.00; cornmeal, per sack, \$2.85; hay, per ton, \$18.

Fruits: Bananas, \$4 to \$5 per bunch; oranges \$4 to \$4.50; California oranges, \$5.50; apricots, \$1.50 to \$2 per box; cherries, \$1.50 per box; strawberries, 15 to 20c per box; gooseberries 8 to 10c per box; currents, 8 to 10c per lb.; apples, \$1.25 to \$1.50 per box.

Butter: \$1.50 for 5 lb. cartoons of Ontario creamery; dairy old, 10c; fresh, 20c per lb.

Eggs, 18 to 25c per dozen. Fresh eggs limited.

Fish: Halibut, 7 to 10c; salmon, 6 to 10c.

Meats: Hams, 17c; bacon, 17c; rolled bacon, 14c; beef, 10 to 18c; veal, 10 to 18c; mutton, 10 to 18c and pork, 10 to 18c.—*Telegram*.

The city of Montreal will prosecute all persons selling milk without a license.

The failures in Manitoba for the past three months were eight with liabilities of \$53,275.

A Detroit despatch says the strike of carpenters has collapsed after lasting since May 14.

Osler & Hammond, of Toronto, have purchased the debentures covering the floating debt of Aylmer, amounting to \$5,000. They draw five per cent interest.

The gentleman who insured five hundred cigars, smoked them, and then sent in a claim on the ground that they were destroyed by fire, has had the laugh turned upon him. The company threatened to arrest him on a charge of arson.

Macaulay, Higginbottom & Co., general merchants, of Whitewood, Assa., write THE COMMERCIAL, denying the rumor current in commercial circles that they were dissolving partnership. They say there is no foundation whatever for the report.



### Manitoba Crops.

Since our last weekly report the weather has been most favorable for the growing crops; indeed, if it had been made to the order of the people here, it could not have been more favorable. The heavy rains of the first of last week, and the latter part of the previous week, extended all over the country, refreshing those districts where it was most needed. A few cool days which followed would be good for the grain. Toward the middle of last week another very heavy rain was experienced. The Winnipeg district seems to have received the heaviest drenching, but the entire country received a liberal supply. So far as grain crops are concerned, nearly all parts of the country have now received enough rain to bring the crops through without further moisture, and an occasional shower for gardens and vegetable crops is all that is needed. The grain crops now require reasonably warm weather to ensure a safe harvest, and this we are at present getting.

Grain is now well headed out and the promise is good; though it is just as well to remark that the great majority of reports sent out have been altogether of too glowing a description. Nothing is to be gained by going wild over the prospect and sending out greatly exaggerated reports, such as some which have been published. Especially is this true of the estimated yields which have been sent abroad. Experience has shown that estimates of yields made before harvest are generally misleading, and the majority of such already made on the Manitoba crop for 1890 will no doubt prove to be grossly exaggerated. In fact a great deal of rot has been talked about the crop prospect in Manitoba this year.

All the same the outlook is good, and the prospect is for a fair average yield. In those districts in the central portion of Manitoba which suffered from drought in June, the wheat crop will be below an average, and some fields will be poor. There is no disguising the fact that those sections suffered considerably from the drought. On the other hand the eastern and western portions of the province will probably give more than an average yield, which will make up the deficiency in the other sections. Barley and oats did not suffer as much as wheat in the limited sections affected with drought in June, being later, and these grains promise a very heavy yield all over the province. More than an average crop for the province can be safely estimated for these grains. The only serious damage to crops so far reported from hail was the storm of about two weeks ago at Wawanesa, on the Northern Pacific Brandon branch. It is estimated that about 5,000 acres were destroyed by this storm.

Hay has made a heavy undergrowth as a result of the recent rains, and the crop will be better than expected. Considerable hay has been cut already, and for this the benefit which might have been derived from the undergrowth has been destroyed. If some regulations could be made to prevent the early cutting of hay, except such as is required for immediate use, it would be a great improvement upon the present system, which is having the effect of ruining the natural hay meadows.

Campbell & Simpkins, tailors, Victoria, contemplate dissolution.

### General Notes.

Japan's first Parliament under the new constitution will convene in Tokio in November. Mr. Kaneko, of the Japanese Privy Council, who is taking note of parliamentary proceedings in Europe and America, is now in Washington City. He prefers the English system, on account of its decorum and dignity.

The Dominion Organ and Piano Company of Bowmanville, Ont., and the Clough and Warren Piano and Organ Company of Detroit, will, it is said, consolidate their interests under the name of the first named company, and erect very extensive piano and organ works at Mimico, the new manufacturing town in the western suburbs of Toronto.

A traveller for a Montreal cigar firm on visiting St. Catharines recently found that he could not sell any imported cigars there. His suspicions were aroused and the Department of Inland Revenue at Toronto was notified, an investigation was made which resulted in the seizure of a number of boxes belonging to a St. Catharines dealer, supposed to be imported cigars. It was found out, however, that they were manufactured in Toronto and the matter is now being looked into by the authorities.

The customs returns for Toronto for the fiscal year which ended on June 30 show a considerable increase as compared with those of the preceding twelve months. The total collections in Toronto amount to \$4,322,318 for the present year, as against \$4,008,159 last year. The largest increase was in the first quarter, when it amounted to \$200,000; in the second quarter it was \$140,000, in the third quarter \$28,000, but in the fourth quarter there was a decrease as compared with the fourth quarter last year of \$54,000. The decrease in the month of June was \$23,000.

The well known wholesale dry goods house of John Macdonald & Co., Toronto and Manchester, has admitted James Fraser Macdonald a partner, the style of the firm remaining unchanged. The new partner is the second son of the late Senator Macdonald, and is admitted in accordance with the wish of his father, as expressed in his will. The firm is now composed of John Kidston Macdonald, Paul Campbell and James Fraser Macdonald. They make a strong trio, and there is every reason to believe that the house will not only maintain that prominent position which it has so long held, but that it will steadily increase in popularity among the trade of Canada.

### LYMAN, KNOX & CO.

IMPORTERS AND WHOLESALE DRUGGISTS,  
MONTREAL AND TORONTO.

JUST RECEIVED DIRECT FROM HYDRA

400 Cases Honey-Comb Sponges.

WRITE FOR QUOTATIONS.

### Wm. Ferguson,

WHOLESALE

WINES, LIQUORS AND CIGARS

Permit Orders Promptly Executed

8th Street, - - Brandon

JAS. COOPER.

J. C. SMITH

## Cooper & Smith,

MANUFACTURERS,

Importers and Wholesale Dealers in

## BOOTS AND SHOES!!

36, 38 & 40 FRONT ST. WEST

## TORONTO.

S. R. PARSONS. HENRY BELL. W. E. HAZLEY

### PARSONS, BELL & CO.,

## Wholesale Paper Dealers

—AND—

### GENERAL STATIONERS.

AGENTS

**Canada Paper Company,**  
Manufacturers Printing, Wrapping & Writing Paper  
&c., Montreal and Windsor Mills, Quebec.

**Alex. Pirie & Sons,**  
Manufacturers Fine Stationery, Aberdeen, Scotland.

**M. Staunton & Co.,**  
Manufacturers Wall Papers, Toronto.

CORNER PRINCESS AND BANNATYNE STREETS,  
WINNIPEG.

### TEES, WILSON & CO.

70 ST. PETER STREET, MONTREAL.

A FULL ASSORTMENT OF

INDIAN, CEYLON, CHINA AND JAPAN

## T E E S.

We make a specialty of CEYLON and INDIAN Tees, and carry the largest assortment of any House in the Dominion.

Represented in Manitoba, Northwest Territories and British Columbia, by

D. C. MCGREGOR, - MCINTYRE BLOCK, WINNIPEG.

### Thouret, Fitzgibbon & Co.

BERLIN. NEW YORK. MONTREAL.

FACTORY AGENTS FOR

Exclusive Novelties in Dress Goods,  
Underwear, Linens, Woolens, Hosiery,  
Jackets, Embroideries, Buttons, Etc.

Represented by H. A. DRISCOLL & CO.,  
ROOMS 26 AND 28 MCINTYRE BLOCK,  
P.O. Box 179, WINNIPEG.

### J. Kuhn & Son,

—DEALERS IN—

## BUTTER, CHEESE AND EGGS FLOUR AND FEED

And Produce Generally. Agents for the  
**GOLD SPOON BAKING POWDER.**  
Consignments of Produce and other Goods Sold on  
Commission and Prompt returns made.  
Catharine Block, Alexander St. West  
WINNIPEG, - MANITOBA.

# G. F. STEPHENS & CO.

—MANUFACTURERS OF—

**Stephens' Pure Liquid Colors**—Various Shades for Interior and Exterior House Painting.

**Stephens' Prepared Carriage Paints**—In Scarlet, Black and Maroon. These Paints dry with a Rich Gloss and do not require Varnishing.

**Stephens' Elastic Enamel**—For Household Decorations such as Tables, Fancy Chairs, &c., in a large number of delicate shades.

**Stephens' Pure Oxide Paints**—(Almost everlasting)—For Elevators, Granaries, Roofs and all Rough Surfaces exposed to the Weather.

—IMPORTERS AND JOBBERS OF—

**Window Glass**—Ordinary Glazing and Crystal Sheet. Single and Double Strength.

**Heavy Polished Plate**—Sizes in Stock from 44 to 96 inches Wide.

**Ornamental Glass**—In almost Endless Variety.

**A full Stock of Painters' Supplies including Dry Colors, White Lead, Varnish, Brushes, Etc. Artists' Oil Colors and Brushes.**

**Plaster Paris, Plasterer's Hair, Portland Cement, Rosin, Pitch, Etc.**

MARKET STREET EAST, WINNIPEG.

READ, PONDER AND INVESTIGATE. **MILLERS!** READ, PONDER AND INVESTIGATE

To the Millers of Manitoba and the Northwest:

GENTLEMEN:—The Hercules Manufacturing Co. of Petrolia, Ont., beg to announce that Messrs. Robert Muir & Co. of Winnipeg have been appointed our Agents for Manitoba and the Northwest, who are prepared to give estimates on all kinds of MILL MACHINERY manufactured by us, and also on the remodeling of old mills to our latest improved system.

THE COCHRANE ONE BELT DRIVE, CONTINUOUS TRAIN OF ROLLS, which are now at the head of all others. A saving of 50% in power doing 35% more work. Can not be put out of Train. A more even granulation, giving a larger percentage of Patent Flour, thereby increasing the capacity of the Bolts. This is the mill of the future; all others have to give place to it. Why spend you time and money on Rolls which the millers of the United States and Canada have tried and found wanting and are replacing with the COCHRANE ONE BELT DRIVE.

THE HERCULES WHEAT CLEANING MACHINERY—Guaranteed to do better work in ONE operation than any other will do in FIVE. Removes fuzz entirely from end of berry—something unattempted by any other Scourer.

THE HERCULES PATENT FLOUR DRESSER and a full line of FLOUR MILL MACHINERY and MILLERS SUPPLIES.

## Hercules Manufacturing Company, Petrolia, - Ontario.

### Eastern Business Changes.

#### ONTARIO.

G. Arnold, brewer, Bridgeport, has assigned.  
Robert Anthony, tinsmith, Coleman, has sold out.  
R. Eaton & Son, merchants, St. Marys, have assigned.  
John Lumsden, shoe dealer, Toronto, has assigned.  
James Giddens, hotelkeeper, Amherstburg, has sold out.  
Mrs. F. A. Bell, dealer in dry goods, Toronto, has sold out.  
E. L. Wagner, merchant, Elzevir township, has assigned.  
Peters & Hymmen, tailors, Berlin, contemplate dissolving.  
D. Brown, builder and contractor, Owen Sound, has assigned.  
P. Ewan, salt merchant, Saltford, has been burned out; partially insured.  
J. C. Norworthy, insurance agent and banker, Ingersoll has sold out.  
The Wm. Hamilton Manufacturing Company, Peterboro, was damaged by fire; partially insured.

#### QUEBEC.

Charles Vaudry, painter, Montreal, has assigned.  
Joseph Masse, shoe dealer, Doucets Landing, has assigned.  
H. A. Riopelle, grocer, Montreal, is offering a compromise.  
Le Boutilier & Co., general storekeepers, etc., Gaspe Basin, have assigned.

P. F. Couillard, general storekeeper, Carleton, has offered a compromise.  
L. Blanchet, manufacturer of shoes, Montreal, has made a compromise.  
J. Thomson, furniture dealer, Montreal, has called a meeting of his creditors.  
Lagrenade, Beauchamp & Co., manufacturers of shoes, Montreal, have assigned.  
The Repovo Company, Montreal, has dissolved; G. L. Kemp continues the business.

#### NOVA SCOTIA.

George Russell, hotelkeeper, Bridgetown, is dead.  
Maurice Moore, dealer in dry goods, Stellarton, has assigned.  
McLelan & Blaikle, shippers, Great Village; A. W. McLelan is dead.  
Wilson & Wade, dealers in flour and groceries, Bridgewater, have dissolved.

### Grain and Milling.

N. Bawlf, grain dealer, is erecting a warehouse at Winnipeg.  
The Lake of the Woods Milling Company are building an elevator at Carberry.  
Ten thousand bushels of No. 1 hard wheat were shipped from Rapid City the week before last.  
The California wheat crop of 1890 will not be less than 33,300,000 bushels, according to a San Francisco paper.  
The Lake of the Woods Milling Company are erecting an elevator at Griswold, with a capacity of 30,000 bushels.

The Portage Milling Company will light their mill at Portage la Prairie by electricity this fall. The dynamo is being placed in the mill now.

The Hagersville, Ont., Milling Company, Limited, with \$40,000 capital, has been incorporated for the purpose of buying and selling grain and the manufactured products of grain.

At the annual meeting of the Farmers' Elevator Company, held in Portage la Prairie last week, a board of directors was appointed, and Mr. Motcalfe was again elected to the position of manager.

The American crop bulletin issued at Washington on July 5 says: "The weather during the past week in Minnesota and Dakota has favored the growing crops, although localities in South Dakota need rain, and occasional reports of rust come from Minnesota. Wheat, oats and barley are heading, and corn is reported in good condition. Throughout the principal corn producing States the weather was especially favorable for harvesting, which is well advanced. The condition of corn is generally reported as excellent. The warm weather in Oregon the early part of the week caused some injury. Spring wheat is reported as more promising, fall wheat fine, fruit and hops good. Wheat in the eastern country is in good condition. In California the grain and fruit crops in the northern portions will be below the average, while in the southern portions fruit crop will be above the average."

The collections of the excise branch of the Inland Revenue office at Montreal for the month of June were \$238,391.92.

### The Exhibition By-Law.

The by-law to raise \$30,000 by debentures in aid of an annual exhibition at Winnipeg, was voted upon last Wednesday. The vote polled was a very small one, only 638 votes having been given for the by-law and 38 against it. This shows great apathy on the part of the citizens, and if the by-law is defeated, it will be through sheer carelessness. A very large majority of the electors were certainly in favor of the grant, but they did not take sufficient interest in the matter to go to the trouble of recording their votes. It is not yet known whether the by-law has received the number of votes sufficient to make it legally carried. The clerk is at present engaged in making up the voters' list to ascertain the situation. If the by-law is defeated it will be due to the disgraceful carelessness of the electors. If this is all the interest the citizens of Winnipeg take in the welfare of their city, the outlook for the future is not promising.

### Five Months' Imports.

The statement of imports into Canada of metals and hardware for the five months ended May last, as compared with the same period of last year, is given below. The total imports were valued at £418,737, as against £465,133 last year, a decrease of £46,396. In hardware and cutlery there is a decrease of £4,129. The imports of iron, etc., show decreases of £21,436 in pig, £17,800 in railroad, £2,083 in bar, £4,361 in cast and wrought iron, and £1,411 in unwrought tin. There are increases of £4,507 in tin plates, £3,189 in steel, £2,139 in lead and £815 in hooks, sheets, etc.; with regard to machinery steam engines are responsible for a reduction of £1,615, but other descriptions were imported to a larger amount by £5,801. We reported last month copper ore to the value of £2,000, but none was exported previously to May this year, and up to the end of May in 1889 we sent out no copper at all.

	Five months ended May 1889.	1890.
Iron, etc.—		
Pig iron .....	£ 23,343	£ 6,032
Bar, etc. ....	20,705	18,624
Railroad .....	105,196	87,396
Hoops, Sheets, etc. ....	45,026	45,841
Tin Plates .....	73,785	68,278
Cast, Wrought, etc., Iron .....	43,703	39,348
Steel .....	39,072	42,861
Lead .....	17,746	19,885
Tin, Unwrought .....	12,092	10,631
Machinery—		
Steam Engines .....	5,120	3,505
Other Descriptions .....	26,962	32,763
Hardware and Cutlery .....	46,752	42,623

—Toronto Hardware.

### The Fur Trade.

Business is progressing quietly and favorably, and considerable orders have been secured; fashionable articles are firm in price, and in fairly active demand. Prices generally are satisfactory, and are certainly lower than they will be when the season fully opens. It is a favorable feature that jobbers hold no stock carried forward from last season, as they will in consequence purchase early.

Seal continues to hold the leading place; Astrakhan, wool seal, beaver, skunk, and fine Persian lamb are in good request, and will do well; other furs, with few exceptions, are quiet.—*Neg. York Fur Trade Review.*

### A New Electric Coal Cutter.

The Thomson-Houston Motor Company, of Boston, has put in operation an electric coal-cutting machine which has attracted a good deal of attention from mining men throughout the country. The machine is in practical operation near Osceola, Pennsylvania. The plant consists of a seven-horse power steam engine belted direct to a seven-horse power generator. The electric current is conveyed through the mine to the coal-cutter, by a wire suspended along the roofs of the chambers. The cutter in this case is nearly a mile from the generating plant. A five-horse power motor operates it, and is compactly placed on the same bed-plate with the machine. The cutter itself consists of an iron frame twenty-four inches high, eight feet six inches long, and thirty-six inches wide. Nine augur-shaped drills, similar to those now used in mining drills, are placed in the lower part of the frame. Between each drill is a steel-cutter bar which cuts all coal left between the holes drilled by the augur bits. On the under side of each cutter-bar are attached several scrapers which hang loosely, and pull all the coal back as fast as it is cut or drilled, keeping it out of the way and making the opening clear. All coal taken out of this cut is coarse and none is wasted.

The height of the cut is four inches. The machine makes two cuts in five minutes, and it is easily handled and needs only to be pushed along the breast by lever bars. The switches and the controlling devices are so placed that one man easily operates the cutter. The machine is provided with twin wire cable which is long enough to extend along any ordinary chamber and does away with the need of permanent wirings except in the headings. A suitable truck is provided for the cutter upon which it may be carried around the mine with ease. An ingenious device is to be provided on future machines, by means of which the motor will pull itself and the cutter off and on the track as required. The weight of the complete machine is a little over one-half a ton. One strong point in favor of this machine is the readiness with which it accommodates itself to varying hardness of the strata. The motors are wound for but 220 volts pressure, so that all danger from high potential currents is done away with. The capacity of the machine is 180 tons of coal per day, of ten hours, in a four foot vein. Several improvements on the first machine will be embodied in the regular apparatus which is now being manufactured at the Thomson-Houston Motor Company factories in Lynn, Mass.—*Black Diamond.*

### General Notes.

The Dairy Bulletin for July from the Experimental Farm, Ottawa, has been issued. This number is a special one for cheese makers. Dairy men can obtain a copy free, printed in either English or French, by addressing the Dairy Commissioner, Experimental Farm, Ottawa.

The Canadian Pacific earnings for May, 1890, were: Gross earning, \$1,319,423; working expenses, \$854,721; net profits were \$380,599, and for the five months ending May, 1890, the figures are as follows: Gross earnings, \$5,555,316; working expenses, \$3,968,291; net profits, \$587,025; for five months ending May, 31st, 1889, the net profits were \$1,419,960.

Application has been made for the incorporation by letters patent of the Eagle Sulky Harrow Company, (limited). The capital stock is fixed at \$100,000, and Brantford is to be the chief place of business.

An English syndicate is negotiating with the shirt and collar manufacturers of Canada with a view to establishing a trust to take over that industry. The syndicate is anxious to secure the control of three large factories in Montreal, two in Toronto and one in Berlin, Ont.

Action is being taken by the Dominion Government to obtain from the city of Toronto a rebate of 50 per cent. on water rates, which was to be allowed if paid within a certain time. Toronto contends that the Dominion Government is not entitled to the rebate as it pays no taxes on its public buildings.

The fire loss in the United States and Canada for May as compiled by the New York Commercial Bulletin was \$8,838,100 showing that the gratifying reduction in the waste of the National resources over the two preceding years continues. The loss in May, 1889, was \$9,915,300 and in 1888, \$9,188,500.

At a meeting of the Provincial Natural Gas and Fuel Company, of Ontario, held in Toronto recently, it was reported by the general manager that the total production of the company's wells was 12,000,000 cubic feet per day more than what was required to supply St. Catharines, Thorold, Merrilton, Welland and adjacent places. It was decided to run a pipe to Buffalo to dispose of the surplus gas.

... TO THE ...

## Lumber \* Trade.

As Red Cedar is the proper name for the timber of this province that has been commonly called cedar, without the qualifying word RED, I will hereafter designate my shingles and lumber manufactured from this timber as

### Red Cedar Shingles --

—AND—

### -- Red Cedar Lumber.

· · NOW IN STOCK: · ·

3 000,000 ∴ RED CEDAR SHINGLES  
100,000 Ft. RED CEDAR LUMBER

FOR SASH AND DOOR FACTORIES.

☉ PROMPT ☉ SHIPMENTS. ☉

**G. F. Slater,**  
VANCOUVER, B.C.

Furniture and Undertaking House.

# M. HUGHES & CO.

WHOLESALE & RETAIL

Furniture and Undertaking Warerooms  
315 and 317 Main Street.

TELEPHONE No. 413.

Closest prices given to dealers  
Satisfaction guaranteed in every department.

# BROWN BROS.,

Wholesale and Manufacturing

## STATIONERS,

64 to 68 KING STREET EAST,  
TORONTO.

SPECIALTIES.

Account Books Paper—all kinds  
Office Supplies Stationery  
Wallets, Pocket Books  
Ladies Hand Satchels  
Pocket and Office Dairies  
Leather Goods Binders Materials  
Printers Supplies

# CIGARS!

Encourage Home Manufactures by smoking

SELECTS, La Rosa and Havana Whips,  
—MADE BY—

## Bryan & Co

WINNIPEG, - MANITOBA.

## STRANG & CO.

Wishart Block, Market St. East,

## WHOLESALE GROCERS

AND DEALERS IN

Provisions, Wines and Liquors,  
WINNIPEG.

## Wm. Ewan & Son,

WHOLESALE  
CLOTHIERS,

650. Craig St. MONTREAL.

Represented by J. McLEOD, HOLIDAY & Bro., Winnipeg, Man.

SAMUEL HOOPER, DEALER IN MONUMENTS, HEAD Stones Mantle Pieces, Graves, Etc. Special designs furnished on application. Corner Bannatyne and Albert Streets, Winnipeg.

## COCHRANE, CASSILS & CO.

### Wholesale Boots and Shoes

Cor. Craig & St. Francis Xavier Sts.,  
MONTREAL.  
Manitoba and N.W.T. Agency: J. M. MACDONALD,  
McIntyre Block, WINNIPEG.  
British Columbia Branch: WM. SKENE, Van Horne Block, VANCOUVER.

## LYMAN BROS. & CO.,

WHOLESALE

## DRUGS AND MEDICINES

Every requisite for the Drug Trade promptly supplied.

TORONTO, ONT.

## RICHARD & CO,

Importers and Wholesale Dealers in

## Wines, Spirits and Cigars

365 MAIN STREET,  
WINNIPEG.

## Chas. Boeckh & Sons,

—MANUFACTURERS OF—

## BRUSHES, BROOMS,

AND WOODENWARE.

Our Goods can be had from all the Leading Wholesale Trade.

JNO. E. DINGMAN, Agent, - WINNIPEG.

## PHILP & CO.

## Wholesale Fruits

—AND—

### COMMISSION.

Just received car New Potatoes; Water-melons, California Fruits, Southern Onion, and Fresh Vegetables.

Open at all times to give highest price for Fresh Eggs.

Warehouse: COR. KING AND JAMES STS.

P.O. BOX 568.

WINNIPEG, - MANITOBA.

## W. R. Johnston & Co.

(Late Livingston, Johnston & Co.)

WHOLESALE MANUFACTURERS

READY MADE

## CLOTHING

44 BAY STREET, TORONTO.

## W. E. SANFORD M'FG CO., Ltd.

MANUFACTURERS OF

## CLOTHING

45 King St. Albert Street.

HAMILTON & WINNIPEG.



## Home Production

WE MANUFACTURE

**BARB WIRE,**  
**PLAIN TWISTED WIRE,** WITHOUT BARBE.

And are Agents for the

Woven Wire Fencing.

We are in a position to fill all orders promptly. Ours is the only wire manufactured in the Dominion of Canada on which is found the GENUINE LOCK BARB. A personal inspection will convince you of this fact. Quality of wire the best ENGLISH BESSEMER STEEL. Every pound guaranteed.

Manitoba Wire Company

## Steel, Hayter & Co.

TORONTO,

## PURE INDIAN TEAS

Direct Importers of Indian Teas from their Estates in

ASSAM, DARJEELING, KANGRA, CACHAR SYLHET AND KUMAON.

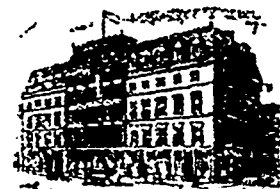
Indian Teas from the above districts always in Stock. Samples and quotations on application to

C. M. RUBIDGE, WINNIPEG.

CHAS. R. KING,  
Victoria.

FRED. GILLESPIE,  
Calgary.

First-class in every Respect. Appointments Perfect. Graduated Prices.



MONTREAL.

Every Attention paid to Goods.

## NIXON & CO.

Wholesale Dealers in

Boots, Shoes and Rubbers

AGENTS FOR

GOODYEAR RUBBER COMPANY OF CANADA.

525 Main St., - Winnipeg.

**A. WILLIAMS & CO.**

49 QUADRA STREET,

VICTORIA, B.C.

**Commission :- Merchants**

And Manufacturers' Agents.

All kinds of Produce Handled.

Advances made on Consignments of Butter and Eggs.

Best Market Price obtained for all Goods and Prompt Settlements.

**J. & A. Clearihue,**  
COMMISSION MERCHANTS

—DEALERS IN—

**FRUITS AND ALL KINDS OF PRODUCE.**

Special attention to consignments of Furs and Skins, Butter and Eggs.

Yates Street, VICTORIA, B.C.

P.O. BOX 536.

AGENTS Skidgate Oil Works, B.C.; D. Richards Laundry Soaps, Woodstock, Ontario; Teller, Bothwell &amp; Co., Montreal, Parisian Washing Blue.

We have a large cool warehouse with good facilities for handling Butter and Produce in quantities.

Consignments Received in all Lines. Correspondence Solicited.

**Victoria Rice Mill**

VICTORIA, B.C.

**CHINA and JAPAN RICE,**

RICE FLOUR AND BREWERS' RICE.

WHOLESALE TRADE ONLY.

HALL, ROSS &amp; CO., - Agents.

**Lenz & Leiser,**

—IMPORTERS AND DEALERS IN—

**Foreign and Domestic Dry Goods,**  
FURNISHINGS, ETC.

SOLE AGENTS FOR

WESTMINSTER WOOLEN MILLS.

Largest and Most Complete Stock in the Province.

Government St. VICTORIA, B.C.

**Henry Saunders,**

—IMPORTER AND DEALER IN—

**GROCERIES AND LIQUORS,**37, 39 AND 41 JOHNSON STREET,  
VICTORIA, B.C.**Victoria Steam Bakery**

M. R. SMITH &amp; CO.

—WHOLESALE AND RETAIL—

**Cracker :- Bakers,**

VICTORIA, B.C.

Capacity 50 barrels of Flour per day. Correspondence Invited.

**TO THE TRADE.****Richardson, Heathorn & Jones**

SOLE AGENTS FOR BRITISH COLUMBIA

—FOR—

A. A. ALLEN, TORONTO,

Hats, Caps, Furs, Etc.

A COMPLETE LINE OF THESE GOODS.

Vancouver, B. C.

**Brackman & Ker,**

—WHOLESALE DEALERS IN—

FLOUR, FEED, GRAIN AND PRODUCE

VICTORIA, B.C.

CORRESPONDENCE SOLICITED.

**THE ORIENTAL TRADERS CO. Ltd.**

Importers and Wholesale Dealers in Goods of all kinds from Japan, China, Philippine Isles, etc.

Tea, Sugar, Coffee, Kamp, Rice, Manila, Cigars, Brushes, Matting, Umbrellas, Handkerchiefs, Silks, Etc.

EXPORTERS OF CANADIAN PRODUCTS. } Vancouver, B.C.

**McMILLAN & HAMILTON,**

COMMISSION MERCHANTS

—AND WHOLESALE DEALERS IN—

BUTTER, EGGS, FRUITS AND PRODUCE

OF ALL KINDS.

153 WATER ST.—VANCOUVER—P.O. Box 296.

**THE VANCOUVER WAREHOUSE CO'Y.**

Storage, free and bonded. Forwarding, Commission, Warehouse Receipts Granted, Customs and Ship Brokerage, Insurance on Goods in Store or in Transit.

Agents for Canada Sugar Refining Company, Montreal.

Special advantages for handling Butter, Cheese and Eggs. Correspondence and Consignments Solicited. Special arrangements for advances made to regular shippers. An experienced Butcher and Cheese man for the Produce Department.

REFERENCES—C.P.R. and Bank of Montreal.

G. R. MAJOR, Manager, VANCOUVER, B. C.

**J. CANNING,**

Direct Importer and Wholesale Dealer in

**FOREIGN AND DOMESTIC FRUITS**

AND COUNTRY PRODUCE.

BAY VIEW, CORDOVA ST., VANCOUVER, B.C.

P.O. Box 711.

**WM. KNOX,**

Produce and Commission Merchant

VANCOUVER, B.C.

BUTTER, EGGS, CHEESE, ETC.

Foreign and Domestic Fruits.

CORRESPONDENCE FROM MANITOBA SHIPPERS SOLICITED.

**To Fish Dealers, Butchers, Etc.**

I am now prepared to ship fresh spring Salmon and all kinds of Salt Water Fish at lowest market prices. I pack in specially devised boxes, well iced, and my shipments usually give the best of satisfaction. Will ship per express C.O.D. unless otherwise specified.

**R. V. WINCH,**

Wholesale and Export Fish Merchant,

66 CORDOVA STREET,

VANCOUVER, B. C.

**THE DRIARD,**

VICTORIA, B.C.

The only strictly first-class hotel in the province.

**LELAND HOUSE, VANCOUVER,**

British Columbia.

The leading commercial hotel of the city. Directly above the C.P.R. Station and Steamboat wharf. All modern improvements. Sample rooms for travellers.

J. E. INSLEY, Mgr. WM. PROUT, Prop

**THE COLONIAL**

New Westminster, B.C.

Headquarters for Commercial Travellers. Fine

Sample Rooms. First-Class in Every Respect.

GEO. R. RAYMOND, - PROPRIETOR.

**QUEEN'S HOTEL,**

NEW WESTMINSTER, B.C.

H. G. WALKER, - Proprietor.

This Fine New House is now open under the above management. Special Accommodation for Commercial Travellers. Best Sample Rooms on the Coast. Largest and Finest House in Westminster.

**Grant, Horn & Bucknall,**

PRODUCE

—AND—

Commission Merchants,

128 Princess Street, WINNIPEG



CREAMERY BUTTER!

DAIRY BUTTER!!

CHEESE!!!

# Heintzman Pianos, Karn Organs and Raymond Sewing Machines

ARE THE BEST.

Agents Wanted in Unoccupied Territory.

ADDRESS:

**J. A. S. HADDOCK & CO.,**  
271 Main Street, - WINNIPEG, Man.

## British Columbia.

Riddle & Johnston have opened a shipsmith shop at New Westminster.

The firm of John Whelan & Co., hotelkeepers, Vancouver, has been dissolved; G. F. Winters retiring.

Giles & Holland, real estate agents, Vancouver, have dissolved; Giles will continue the business.

Johnston & Mason, real estate agents, Vancouver, have dissolved; Mason will continue the business.

Wilson, Matheson & Co., contractors, New Westminster, have dissolved; Wilson continues the business alone.

F. Bilodeau, proprietor of the new Depot Hotel, at New Westminster, expects to have it ready to open this week.

The job printing and book binding business of Kennedy Bros., New Westminster, was sold by them recently to Lewis & Greig.

A complaint has been lodged with the customs department that butterine is being imported into British Columbia contrary to law.

A fire destroyed a considerable part of Jins & Kozakura's stock of Japanese curios at Vancouver on June 27th. The loss will amount to about \$1,500.

The Victoria agricultural exhibition is to be held the first week in October, and the New Westminster show will be held in the latter part of September.

Shipments of coal from the Island mines for June were: New Vancouver Coal Company, 21,809; Wellington, 558; East Wellington, 2,389; Union mine, 4,500. Total, 29,256.

The shingle mill on Gambier Island, belonging to W. L. Johnston & Co., of New Westminster, was burned on July 1st. The loss was total there being no insurance on stock, building or machinery.

The steamer Idaho, which was wrecked near Port Haddock, has been purchased for \$500. Divers are at work bringing up her cargo. So far 200 barrels of salmon and 150 barrels of oil have been obtained, which will sell for about \$5,000.

The customs collections at the port of Victoria, for the month ending June 30, amounted to \$75,188.48; at Vancouver, \$27,456.13, and at Nanaimo, \$3,835.72. The total value of Victoria's imports was, \$276,812; exports, \$81,100. Vancouver's imports aggregated \$104,191.

## Lumber Cuttings.

Settler Bros.' saw-mill at Bearbrooke, Ont., has been burned. Loss, \$30,000; no insurance.

A fire at Sibley & Bearinger's lumber docks, East Tawas, Mich., destroyed \$200,000 worth of lumber.

The clearances of lumber from Burrard Inlet, B.C., for May were 1,209,212 feet of lumber for Valparaiso.

It is said that two new saw-mills will be erected in the vicinity of Vancouver, B. C., in a short time.

An abundant lumber crop is expected in New Brunswick this summer as nearly all the drives are coming on bringing 50,000,000 or 60,000,000 feet hung up last year.

The largest boom of logs ever built in British Columbia is now on its way from the northern part of the province to Vancouver. The boom consists of one million feet of logs and is consigned to H. R. Morse.

A meeting of the lumber manufacturers of the Northwestern States has been called to discuss the matter of a uniform price list. A committee appointed at the last meeting of this body have a price list prepared for submission, which it is thought will meet with general approval.

G. F. Slater's shingle mill at Vancouver, B.C., is shortly to be increased in capacity. The mill has been gradually increased until the capacity is 100,000 shingles per day. A Chaloner's shingle machine is now being purchased, which will bring the capacity up to 130,000 per day. A Sturtevant dry kiln is also being put in, which will dry the total cut in twenty-four hours, or as fast as turned out. The mill is located on False Creek, and also is reached by a spur track of the Canadian Pacific Railway, thus affording every facility for receiving and shipping material expeditiously and economically. In addition to shingles, machinery was recently put in for the manufacture of clear red cedar lumber for factory work. Only the finest quality of red cedar will be used, and a specialty will be made of supplying clear lumber, etc., to sash and door factories and for other special purposes. Slater's red cedar shingles are already known throughout Manitoba, where they have gained a reputation possessed by no others. About 100 cars of these shingles were shipped to Manitoba last year, and more were wanted, but could not be supplied with the facilities then enjoyed. The mill is now the largest as well as the most complete of the kind on the Pacific Coast. The success of this mill is mainly owing to the growing demand from Manitoba for the shingles, where the goods from this mill have given great satisfaction. The best quality of material and square dealing has been the secret of success in this case. H. H. Spicer, the business manager, is a person with whom it is a pleasure to do business, owing to his pleasant and manly disposition. In addition to the Manitoba and Territorial trade, occasional shipments from this mill are also being made to eastern points in the United States and Canada.

American dealers report a very steady distribution of canned salmon. Prices continue low and fairly liberal orders are still being placed for best brands.

Apple Exports of 1889-90.

An article on the export of apples from the United States and Canada appears in the *Boston Cultivator*. It says that the apple exports for the past season were not on nearly so large a scale as a year ago; they did not aggregate 50 per cent. of the total exports of last season. "This shows an unusually large decrease, although seasons of 1882-83 and 1883-84 showed even a larger difference. But when the conditions of the apple crop and market are considered, such a falling off the past winter can be accounted for. The United States apple crop was exceedingly small. The West was the only place that produced a really fair sized crop. Just the reverse was noted in New England. Most of the apples shipped were below the best quality, many being really poor. Then the market on the other side was liberally supplied, there being a very fair yield of apples all through Europe. The original cost of apples for export was about 100 per cent. more than last year." The opening prices in England were fair, and at close the price was 10s higher. Thus figures ruled high. The New York State apple crop was small, and but very few New York apples were shipped. But shipment of Canadian apples by way of New York was very large, making up fully that deficiency.

The total exports of apples from the United States and Canada in 1889-90 were 680,884 barrels, as against 1,401,382 barrels in 1888-89 and 608,688 barrels in 1887-88. The large shipment of 893,375 barrels was made in 1885-6, and about the same the next year; 787,785 barrels in 1884-85, but only 81,532 barrels in 1883-84. Boston shipped 132,293 barrels in all, 121,461 barrels to Liverpool, 9,712 barrels to Glasgow, 3,820 barrels to London, 300 to other ports; New York sent 167,304 barrels, half to Liverpool, 51,605 barrels to Glasgow, 18,818 barrels to London, 10,206 barrels to other ports; Montreal sent 162,526 barrels, 88,615 barrels to Liverpool, 55,371 barrels to Glasgow, 15,497 barrels to London; Portland shipped 122,739 barrels, all to Liverpool; Halifax sent 56,012 barrels, 345 barrels to Liverpool, 55,667 barrels to London; Annapolis sent 37,010 barrels, all to London. Of the entire country season's shipments, 419,835 barrels went to Liverpool, 116,683 barrels to Glasgow, 130,722 barrels to London, and 13,639 barrels to various other ports. Of the shipments from Portland to Liverpool, 76,819 barrels contained Maine apples and 45,926 barrels Canadian apples.

A Big Tree.

Preparations are being made to take out a section of a big redwood tree from Tulare County, California, for the purpose of exhibition at the Chicago World's Fair.

This will be the largest section of any big tree ever taken from California. The tree measures 99 feet in circumference, making it 33 feet in diameter. The section to be taken out will be nine feet in height and 60 feet in circumference. It will be divided into three cuts.

The first cut will be one foot in height by twenty feet in diameter. This cut will be split once across, making two half rounds. The next cut will be seven feet in height by twenty feet in diameter, and will be hollowed out, leaving the bark and sap and about four inches of the timber. The last cut will be the same as

the first, allowing all the timber to remain and only splitting once. All three cuts will be set up together when on exhibition.

The manner in which this tree will be gotten out will convince the most skeptical of people that this is not misrepresented, but the largest section of any big tree ever taken from California. The World's Fair Big Tree is to be taken from Mammoth Forest, Tulare County, California, which is located 52 miles east of Tulare City, at an altitude of 6,325 feet above the level of the sea.

The work of felling the tree has already begun. Ten skilled workmen have been engaged and are busy at work. The saw to be used in getting out these sections is 22 feet in length, and was made to order by the Pacific Saw Company of San Francisco. It is said to be the largest crosscut saw ever made of one piece of steel, and is supposed to require eight men to handle it. It will take a man at least two months to complete all the work to be done. Considerable time will be required for the timber to dry, as the weight of the green redwood is very considerable.

Everything will be in readiness long before the proper time arrives for shipment.

Three flat cars will be necessary for transportation, as the total weight will not be less than 65,000 pounds.—*Mining and Scientific Press.*

Warping of Wood.

As lumber is now sawn, every board but one will warp and curl up in the process of seasoning. The reason for this is plain. If the board be sawn from the side of a log, the grain rings of the wood lie in circles, which have a greater length upon one than upon the other side of the board. A board cut from the very centre of the log has grain circles of equal length upon each side, and will lie perfectly flat when seasoned.

When selecting the lumber for a tool chest or some other fine job, pick out boards which show that they came, as near as possible, from the centre of the log. A method is in use which compensates for this tendency to curl in seasoning. This is known as quarter sawing, and quartered oak, of which so much is said at present, is sawn by this process.

It consists in cutting out boards radically from the centre to the outside of the log. Suppose a log to be split into four pieces, each of these pieces is sawn diagonally so that the grain rings run through, instead of the circles running into, part way through, and out upon the same side of the board.

Quarter sawn lumber will not warp in drying, neither will it yield so readily to changes of weather. It has the disadvantage of being more expensive, as in sawing each quarter a narrow board is first taken off, then one a little wider. The boards increase in width, until the middle of the quarter is reached, making the widest board equal to the diameter of the tree. The narrow boards may be glued up into wide strips, but that shows considerable sap and they cannot be used in some kinds of work.

To prove that the circles or sap rings cause curling during the seasoning process, it is only necessary to take such curled boards and wet the concave side, or to apply heat to the convex side. If each or both be done, the boards will straighten out forthwith. This method is often taken advantage of by carpenters, in working twisted or warped boards. The seasoning process is also controlled by frequently turning boards over so that each side may receive just enough heat and air to keep the boards flat.—*Woodworker.*



THE SHORTEST AND MOST DIRECT ROUTE

EAST, WEST  
—AND—  
SOUTH.

THROUGH TICKETS AT LOWEST RATES to Toronto, London, Detroit, Buffalo, Montreal, Quebec, Halifax, Boston, New York AND ALL POINTS IN THE EAST, also to St. Paul, Chicago, etc., etc.

\$10 Saved on 1st Class and \$5 on 2nd Class Tickets to Vancouver, Victoria, Seattle, Tacoma, Portland, Ore., San Francisco and all Pacific Coast Points by taking the Canadian Pacific Route.

EXCURSION TICKETS TO BANFF HOT SPRINGS AND THE PACIFIC COAST ON SALE DAILY.

Palace Dining and Sleeping Cars, Comfortable Day Coaches and Free Colonist Sleeping Cars on all Through Trains.

Leave.	WINNIPEG.	Arrive.
13 20 Daily.	Pacific Express for Portage la Prairie, M. & N.W. Railway Stations, Carberry, Brandon, Qu'Appelle, Regina, Moosejaw, Medicine Hat, Calgary, Banff Hot Springs, Donald, Rainloops, Vancouver, New Westminster and PACIFIC COAST POINTS.	16 30 Daily.
17 30 Daily except Thur.	Atlantic Express for Port Arthur, Sudbury, Sault Ste. Marie, North Bay, Toronto, London, Detroit, Niagara Falls, Ottawa, Montreal, Boston, Halifax, New York and all Eastern Points.	10 50 Daily except Wed.
9 45 Daily.	St. Paul Express for Morris, Greta, Grafton, Grand Forks, Fargo, Minneapolis, St. Paul, Duluth, Chicago, St. Louis, Detroit, Toronto, Montreal, etc.	12 50 Daily
b 9 45	Connects with Mixed for Morden, Manitou, Killarney, Deloraine and Intermediate Stations.	12 50 a
a 11 25	Morris, Morden, Manitou, Killarney and Deloraine.	17 15 b
a 11 50	Headingley, Carman, Treherne, Holland and Glenboro.	16 00 b
b 7 50	Stony Mountain and Stonewall.	12 15 b
b 18 00	Kildonan, Parkdale, Lower Fort Garry and West Selkirk.	11 15 a
c 8 00	Niverville, Otterburne, Dominion City and Emerson.	18 00 c

a, Tuesday, Thursday and Saturday; b, Monday, Wednesday and Friday; c, Friday only.

TICKETS (471 Main Street and C.P.R. Depot, Winnipeg. G. H. CAMPBELL, Ticket Agt. Or at any Regular Station of the Company.)

GEO. OLDS, Gen. Traffic Mgr., MONTREAL.  
D. McNICOLL, Gen. Pass. Agt., MONTREAL.  
W. WHYTE, Gen. Sup't, WINNIPEG.  
ROBT. KEER, Gen. Pass. Agt., WINNIPEG.

**The Manufacturers' Life AND Accident Insurance Co's**

Head Office: - TORONTO.

Combined Authorized Capital - - \$3,000,000

Incorporated by Special Act of the Dominion Parliament.  
Full Government Deposit.

Absolute Security Offered in a Live, Prosperous and  
**POPULAR CANADIAN COMPANY.**

PRESIDENT—SIR JOHN A. MACDONALD, P.C., G.C.B.  
VICE-PRESIDENTS—George Gooderham, Esq., President of the Bank of Toronto.  
—William Bell, Esq., Manufacturer, Guelph.  
—S. F. McKinnon, Wholesale Merchant, Director of the Traders Bank.  
JOHN F. ELLIS, MANAGING DIRECTOR.

WM. SCOTT, Provincial Manager, Winnipeg

AGENTS WANTED IN UNREPRESENTED DISTRICTS.



**S. A. D. BERTRAND,**  
OFFICIAL ASSIGNEE

For the Provinces of Manitoba, under the recommendation of the Board of Trade of the City of Winnipeg.

Insolvent and Trust Estates Managed with Promptness and Economy.  
Special attention to Confidential Business Enquiries.

35 PORTAGE AVENUE EAST,  
WINNIPEG, MAN.

**TO BUTCHERS?**

**S. Walker & Co.**  
WINNIPEG.

**Axle Grease Works**  
Pays the highest price for Fat and Tallow  
All the Year Round.  
PROMPT CASH PAYMENT.

**WALKER HOUSE.**

The most conveniently located Hotel in Toronto.  
One Block from Union Railway Depot.  
A first-class Family and Commercial House.

Terms from \$2 a Day  
DAVID WALKER, PROPRIETOR.

Corner York and Front Sts., TORONTO, Ont.

J. F. EBY. HUGH BLAIN.

**Eby, Blain & Co.**  
**WHOLESALE GROCERS,**  
COR. FRONT AND SCOTT STS.,  
TORONTO.

Represented in Manitoba and the Northwest Territories by JAMES DOWLER, 130 Donald Street, WINNIPEG.

**MONTREAL BRASS WORKS.**

MONTREAL, P.Q.

**Robt. Mitchell & Co**

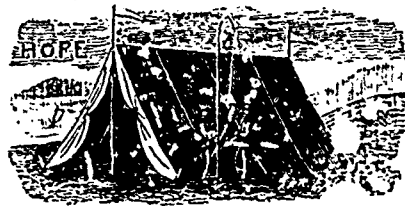
Proprietors, Manufacturers of

Gas Fixtures of Every Description,

Engineers, Plumbers,

Steam & Gasfitters Brass Goods,

Gas Meters and Automatic Fire Extinguisher



**HOPE & CO.**

—MANUFACTURERS OF—

Tents, Awnings, Mattresses and  
Horse Covers.

GUN CASES.

9 McWilliam St. East, - WINNIPEG.

NOTHING LIKE LEATHER.

**W. N. JOHNSON & CO.,**  
Importers and Dealers in  
**LEATHER AND FINDINGS.**

Manufacturers of Harness, Collars, Boot  
and Shoe Uppers, etc.

25 and 27 Alexander St. West, Winnipeg

**James Flanagan,**

—WHOLESALE DEALER IN—

GROCERIES AND PROVISIONS

—AND—

PRODUCE COMMISSION MERCHANT.

No. 7 QUEEN STREET EAST,  
WINNIPEG.

PRICES FURNISHED ON APPLICATION.

**KIRKPATRICK & COOKSON**

Established 1860,

MONTREAL,

Commission Merchants,

FLOUR, GRAIN, BUTTER, &c.

Consignments and Orders Solicited

Andrew Allan, President. John McEchnie, Superintendent.  
F. E. Brydges, Vice-President. E. H. Williams, Sec.-Treas.

**THE VULCAN IRON COMPANY,**  
OF MANTOBA, (LIMITED).

**BRASS & IRON FOUNDERS,**  
Light and Heavy Forgings, Engine and Boiler Works  
Millwrighting,

**GENERAL BLACKSMITHING,**  
All Kinds of Machinery.

POINT DOUGLAS AV., WINNIPEG

**Toronto Hide & Wool Co**

Wholesale Dealers in

**HIDES!**

SHEEPSKINS AND WOOL

**JOHN HALLAM**

88 Princess St., WINNIPEG

83 and 85 Front Street East, - TORONTO.  
PROPRIETOR.

We will be in the market this season as usual for all classes of Wool, and are prepared to pay the higher market prices.

**EVANS BROS.' PIANOS,**

Fine Finish, Fine Toned, Easy Touch.

THE UNEQUALLED

**Doherty Organ.**

Send for Catalogue and Price Lists

AGENTS WANTED.

O. E. MARCY, GENERAL AGENT.

WINNIPEG.

**Hodgson, Sumner & Co.**

—IMPORTERS OF—

British, French, German and American Dry Goods, Small Wares and Fancy Goods.

347 and 349 St. Paul Street, MONTREAL.

Represented: J. McLEOD, HOLIDAY & BRO.  
Commission Merchants, 54 Portage Avenue,  
WINNIPEG, MAN.



RUN

FAST TRAINS with Pullman Vestibuled Drawing Room Sleepers, Dining Cars and Coaches of latest design, between CHICAGO and MILWAUKEE and ST. PAUL and MINNEAPOLIS.

FAST TRAINS with Pullman Vestibuled Drawing Room Sleepers, Dining Cars and Coaches of latest design, between CHICAGO and MILWAUKEE and ASHLAND and DULUTH.

THROUGH PULLMAN VESTIBULED DRAWING ROOM and COLONIST SLEEPERS via the NORTHERN PACIFIC RAILROAD between CHICAGO and PORTLAND, ORE.

CONVENIENT TRAINS to and from Eastern, Western, Northern and Central Wisconsin points, affording unequalled service to and from WAUKESHA, FOND DU LAC, OSHKOSH, NEENAH, MENASHA, CHIPPEWA FALLS, EAU CLAIRE, HURLEY, WIS., and IRONWOOD and BESSEMER, MICH.

For tickets, sleeping car reservations, time tables and other information, apply to Agents of the line, or to Ticket Agents anywhere in the United States or Canada.

B. R. AINSLIE, General Manager, Milwaukee, Wis.  
J. M. HANNAFORD, Gen'l Traffic M'gr, St. Paul, Minn.  
H. C. BARLOW, Traffic Manager, Milwaukee, Wis.  
LOUIS ELKSTEIN, Ass't Gen'l Pass'r and Ticket Agent, Milwaukee, Wis.



February 1st, 1890, the St. Paul, Minneapolis & Manitoba Railway and Branches became the

Great Northern R'y Line

With 3,300 miles of steel track it runs through 62 counties in Minnesota, North Dakota, South Dakota and Montana, reaching all principal points from St. Paul, Minneapolis, West Superior and Duluth.

It furnishes through close connections, the best and cheapest route to all points in Idaho, Utah, California, Oregon, Washington, British Columbia, Alaska, the Canadian Northwest and Manitoba.

It is the only American line west of Chicago having a track laid with 75 pound steel rail and owning its entire magnificent equipment of elegant Dining and Sleeping Cars, handsome Day Coaches and Free Colonist Stoppers.

It is the only line running through the great Milk River Reservation, with solid trains without change to Chinook, Benton, Great Falls, Helena and Butte.

It has three lines in the Red River Valley, is the only line to the Turtle Mountains and has three lines in South Dakota.

It reaches the largest area of free Government land of agricultural value now remaining in the country.

It is the principal line to Lake Minnetonka and the of Minnesota.

It is the direct route between St. Paul, Minneapolis, Anoka, St. Cloud, Duluth, West Superior, Fergus Falls, Crookston, Moorhead, Fargo, Grand Forks, Graeton, Winnipeg, Devils Lake, Ellendale, Aberdeen, Huron, Watertown, Sioux Falls and Sioux City.

pleasure, fishing and hunting resorts of the Park Region. For rates, tickets, maps and guides apply to

H. G. McMICKEN, General Agent, 376 Main St., Corner Portage Avenue.

F. I. WHITNEY, Gen. Ticket and Pass. Agt., St. Paul.

THESE VESTIBULED TRAINS go in service May 15th.

Chicago, St. Paul, Minneapolis & Omaha Ry THE NORTHWESTERN LINE,

The best equipped line to

CHICAGO, OMAHA AND KANSAS CITY.

The ONLY line to Chicago running Pullman and Wagner Vestibuled Trains.

These Vestibuled Trains are limited as to time but not limited as to number of passengers. All classes of Passengers carried, with separate apartments for each class, and NO EXTRA FARES.

Trains Eastward will run as follows: Leave Minneapolis 6.50 p.m.; St. Paul 7.30 p.m. Arrive Milwaukee 7.40 p.m.; Chicago 8.50 a.m.

The Sleeping Cars on these trains have been prepared especially for this service, and together with the Vestibuled Dining Cars, Coaches and Baggage Cars are the finest equipped trains of their class in the world.

TICKETS AT LOWEST RATES, and good on these Vestibuled Trains, can be secured at the following offices: St. Paul, 159 East Third Street; Minneapolis, 13 Nicollet House Block; Duluth, 112 West Superior Street; also at St. Paul and Minneapolis Union Depots and at offices of connecting lines. Sleeping car accommodation secured in advance.

NOTE-The above advertised time is the actual running time, and the motto of the Northwestern Line is "ALWAYS ON TIME."

E. W. WINTER, General Manager. F. B. CLARKE, General Traffic Manager. T. W. TEASDALE, General Passenger Agent.

Canadians, Attention!

Minneapolis & St. Louis Railway

Albert Lea Route

In connection with the Northern Pacific and St. Paul, Minneapolis & Manitoba Railways, will during the months of November, December, 1889, and January, 1890, run a series of

CHEAP EXCURSIONS

To Ontario and Quebec Points.

FOR THE ROUND TRIP - TICKETS GOOD 30 DAYS.

Avoid delays and detentions in Chicago and other point, by purchasing your tickets via the "Albert Lea Route."

For detailed information call upon your nearest railway agent or write to

C. H. HOLDRIDGE, Gen. Ticket and Pass. Agt., MINNEAPOLIS.

Northern Pacific And Manitoba Railway.

TIME CARD.

To take effect at 6 a.m. Sunday, June 15, 1890. (Central or 10th Meridian Time.)

Table with columns for North Bound, South Bound, Stations, and Time. Includes stations like Winnipeg, Portage Junction, St. Norbert, Carleton Place, St. Agathe, Union Point, Silver Plains, Morris, St. Jean, Letellier, West Lynne, Pembina, Grand Forks, Winnipeg Junction, Brainerd, Duluth, Minneapolis, and St. Paul.

Table for PORTAGE LA PRAIRIE BRANCH. Columns include Eastward, Westward, Stations (Winnipeg Junction, Bismarck, Miles City, Livingston, Helena, Spokane Falls, Pasco Junction, Tacoma, Portland, St. Paul), and Time.

Table for MORRIS-BRANDON BRANCH. Columns include Mixed, Stations (Winnipeg, Portage Junction, Headingly, White Plains, Gravel Pit, Eustace, Oakville, Assiniboine Bridge, Portage la Prairie), and Time.

Table for MORRIS-BRANDON BRANCH. Columns include Mixed, Stations (Morris, Lowe's, Myrtle, Roland, Rosebank, Miami, Deerwood, Alta, Somerset, Swan Lake, Indian Springs, Maricapolis, Greenway, Balder, Belmont, Hilton, Wawanesa, Rounthwaite, Martinville, Brandon), and Time.

Meals. Nos. 117 and 118 run daily. Nos. 119 and 120 run daily except Sunday. Nos. 5 and 6 run daily except Sunday. No. 7 will run Mondays, Wednesdays and Fridays. No. 8 will run Tuesdays, Thursdays and Saturdays. Pullman Palace Sleeping Cars and Dining Cars on Nos. 117 and 118. Passengers will be carried on all regular freight trains. J. M. GRAHAM, General Manager. H. SWINFORD, General Agent. Winnipeg.

Manitoba and Northwestern Ry.

TIME CARD

Taking Effect Monday, June 16th, 1890.

Table with columns for Pass Tuesday, Thursday and Saturday, Miles from Winnipeg, Stations, and Pass Monday Wednesday and Fridays. Includes stations like Winnipeg, Portage la Prairie, Gladstone, Neepawa, Minnedosa, Rapid City, Shoal Lake, Hirtle, Binscarth, Russell B., Langenburg, and Saltcoats.

Meals. A Thursdays and Saturdays. n Wednesdays. o Thursdays and Saturdays. p Mondays and Fridays. If any passengers for stations between Winnipeg and Portage la Prairie, train will stop to let off, and when flagged to take on passengers. W. R. BAKER, Gen. Super't. A. McDONALD, Asst. Gen. Pass'r Agent.

N. W. C. & N. Co's Railway TIME TABLE.

Table with columns for Read Down, GOING EAST, Stations, and Read Up, GOING WEST. Includes stations like Lethbridge, Woodpecker, Purple Springs, Grassy Lake, Cherry Coulee, Winifred, Seven Persons, and Dunmore.

E. T. GALT, Manager, Lethbridge. J. BAILEY, Supt., Lethbridge.

Northern Pacific

And Manitoba Railway.

Can now give passengers the choice of going to Eastern Canada or the United States by either

ALL-RAIL OR LAKE AND RAIL.

According to recent changes in time tables, passengers can now make a continuous trip to the East via the all-rail route, making better time than by any other route.

It is the only line by which connection can be made with the magnificent steamers of the Lake Superior Transit Co. and Northwest Transportation Co. five days out of the week, affording passengers a pleasant trip through the lakes.

All baggage destined for Points in Canada checked through, doing away with Customs troubles.

Ocean Passage and Berths Secured

To and from Great Britain and Europe. All first-class Steamship Lines represented.

Round Trip Excursion Tickets

To Pacific Coast, Good for Six Months.

For full information call on or write to any of the Company's Agents.

H. J. BMLCH, City Ticket Agent, 486 Main Street, Winnipeg. H. SWINFORD, General Agent. General Office Building, Water Street, Winnipeg. J. M. GRAHAM, General Manager.