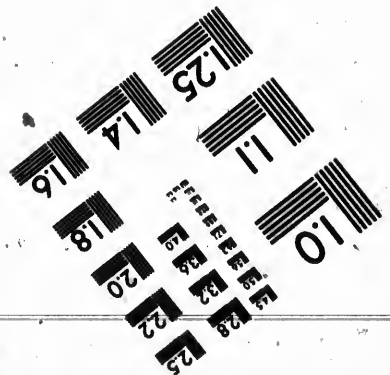
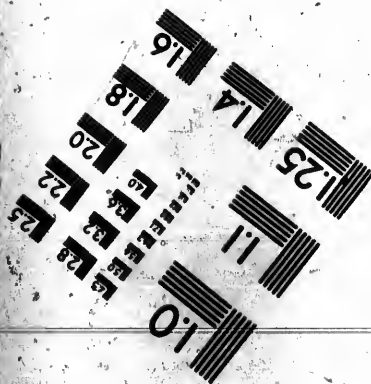
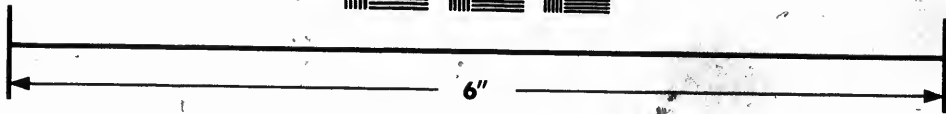
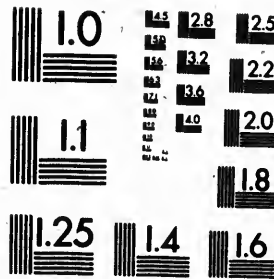


**IMAGE EVALUATION
TEST TARGET (MT-3)**



**Photographic
Sciences
Corporation**

23 WEST MAIN STREET
WEBSTER, N.Y. 14580
(716) 872-4503

**CIHM
Microfiche
Series
(Monographs)**

**ICMH
Collection de
microfiches
(monographies)**



Canadian Institute for Historical Microreproductions / Institut canadien de microreproductions historiques

© 1992

Technical and Bibliographic Notes / Notes techniques et bibliographiques

The Institute has attempted to obtain the best original copy available for filming. Features of this copy which may be bibliographically unique, which may alter any of the images in the reproduction, or which may significantly change the usual method of filming, are checked below.

L'Institut a microfilmé le meilleur exemplaire qu'il lui a été possible de se procurer. Les détails de cet exemplaire qui sont peut-être uniques du point de vue bibliographique, qui peuvent modifier une image reproduite, ou qui peuvent exiger une modification dans la méthode normale de filmage sont indiqués ci-dessous.

- Coloured covers/
Couverture de couleur
- Covers damaged/
Couverture endommagée
- Covers restored and/or laminated/
Couverture restaurée et/ou pelliculée
- Cover title missing/
Le titre de couverture manqué
- Coloured maps/
Cartes géographiques en couleur
- Coloured ink (i.e. other than blue or black)/
Encre de couleur (i.e. autre que bleue ou noire)
- Coloured plates and/or illustrations/
Planches et/ou illustrations en couleur
- Bound with other material/
Relié avec d'autres documents
- Tight binding may cause shadows or distortion
along interior margin/
La reliure serrée peut causer de l'ombre ou de la
distorsion le long de la marge intérieure
- Blank leaves added during restoration may appear
within the text. Whenever possible, these have
been omitted from filming/
Il se peut que certaines pages blanches ajoutées
lors d'une restauration apparaissent dans le texte,
mais, lorsque cela était possible, ces pages n'ont
pas été filmées.

- Coloured pages/
Pages de couleur
- Pages damaged/
Pages endommagées
- Pages restored and/or laminated/
Pages restaurées et/ou pelliculées
- Pages discoloured, stained or foxed/
Pages décolorées, tachetées ou piquées
- Pages detached/
Pages détachées
- Showthrough/
Transparence
- Quality of print varies/
Qualité inégale de l'impression
- Continuous pagination/
Pagination continue
- Includes index(es)/
Comprend un (des) index

Title on header taken from: /
Le titre de l'en-tête provient:

- Title page of issue/
Page de titre de la livraison
- Caption of issue/
Titre de départ de la livraison
- Masthead/
Générique (périodiques) de la livraison

Additional comments: /
Commentaires supplémentaires:

There are some creases in the middle of the pages.

This item is filmed at the reduction ratio checked below /
Ce document est filmé au taux de réduction indiqué ci-dessous:

10X	12X	14X	16X	18X	20X	22X	24X	26X	28X	30X	32X
						✓					

The copy filmed here has been reproduced thanks to the generosity of:

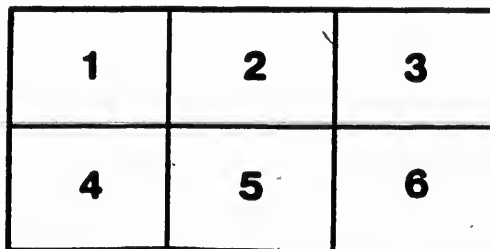
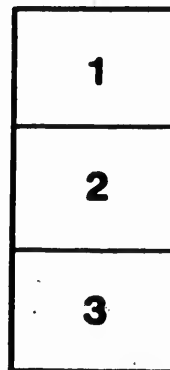
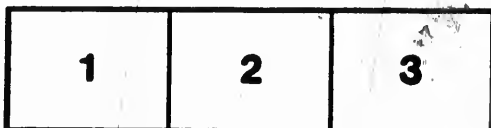
Manuscript Division,
National Archives of Canada

The images appearing here are the best quality possible considering the condition and legibility of the original copy and in keeping with the filming contract specifications.

Original copies in printed paper covers are filmed beginning with the front cover and ending on the last page with a printed or illustrated impression, or the back cover when appropriate. All other original copies are filmed beginning on the first page with a printed or illustrated impression, and ending on the last page with a printed or illustrated impression.

The last recorded frame on each microfiche shall contain the symbol \rightarrow (meaning "CONTINUED"), or the symbol ∇ (meaning "END"), whichever applies.

Maps, plates, charts, etc., may be filmed at different reduction ratios. Those too large to be entirely included in one exposure are filmed beginning in the upper left hand corner, left to right and top to bottom, as many frames as required. The following diagrams illustrate the method:



L'exemplaire filmé fut reproduit grâce à la générosité de:

Division des manuscrits,
Archives nationales du Canada

Les images suivantes ont été reproduites avec le plus grand soin, compte tenu de la condition et de la netteté de l'exemplaire filmé, et en conformité avec les conditions du contrat de filmage.

Les exemplaires originaux dont la couverture en papier est imprimée sont filmés en commençant par le premier plat et en terminant soit par la dernière page qui comporte une empreinte d'impression ou d'illustration, soit par le second plat, selon le cas. Tous les autres exemplaires originaux sont filmés en commençant par la première page qui comporte une empreinte d'impression ou d'illustration et en terminant par la dernière page qui comporte une telle empreinte.

Un des symboles suivants apparaîtra sur la dernière image de chaque microfiche, selon le cas: le symbole \rightarrow signifie "A SUIVRE"; le symbole ∇ signifie "FIN".

Les cartes, planches, tableaux, etc., peuvent être filmés à des taux de réduction différents. Lorsque le document est trop grand pour être reproduit en un seul cliché, il est filmé à partir de l'angle supérieur gauche, de gauche à droite, et de haut en bas, en prenant le nombre d'images nécessaire. Les diagrammes suivants illustrent la méthode.

COMMON COUNCIL OF QUEBEC,

HEALTH COMMITTEE ROOM, August 14th, 1834.

RESOLVED, That in consequence of the gradual decrease of deaths during several days, a general return of the deaths each day since the appearance of the malady, together with a statement of the returns of the hospital since its establishment, be published in the newspapers.

J. Z. NAULT, Secretary.

The Committee then agreed to the draft of an Address to its fellow citizens, in the following terms:

The Health Committee refrained, on the appearance of the prevailing malady, from making public the number of deaths which had occurred, on the ground that it would unnecessarily foster public alarm, but it reserved the execution of its intention in that respect, to the period when it could announce a decided diminution in the intensity of the disease. This period so desired appears at length to have arrived, and it is with heartfelt pleasure that the Health Committee sees reason to inform the public, that a gradual and permanent diminution in the number of deaths for several days past, gives room to hope, that, with the divine will, suitable precautions will deliver us from a scourge that has for the second time thrown a veil of mourning on families, and swept off so many victims. The return of deaths subjoined, on the exactness of which reliance may be placed, will exhibit the extent of the calamity, and shew the progress and diminution of the malady from its appearance.

EDOUARD CARON, Mayor,

Quebec, 14th August 1834.

1834.						1832.	
Date.	Catholics {Quebec.	Catholics {St. Roch.	Protestants.	Hospital.	Total.	Date.	Total.
July 7	6	1	5	0	12	June 9	6
8	2	2	2	0	6	10	7
9	3	1	2	0	6	11	29
10	3	3	4	0	10	12	27
11	9	1	4	0	14	13	70
12	13	1	3	0	17	14	92
13	5	4	13	0	22	15	143
	41	13	33	0	87		374

SECOND WEEK.							
14	15	3	11	0	29	16	120
15	17	2	8	0	27	17	97
16	20	3	9	0	32	18	112
17	15	4	18	0	37	19	117
18	17	5	9	0	31	20	122
19	17	7	18	0	42	21	70
20	27	9	9	2	47	22	78
	128	33	82	2	245		716
THIRD WEEK.							
21	24	9	21	3	57	23	34
22	19	5	2	3	29	24	33
23	10	5	10	1	26	25	49
24	10	6	9	5	30	26	40
25	15	11	15	9	50	27	31
26	20	11	13	4	48	28	21
27	10	8	8	4	30	29	38
	108	55	78	29	270		246
FOURTH WEEK.							
28	9	13	11	4	37	30	33
29	19	10	8	4	41	July 1	31
30	18	10	5	3	36	2	21
31	17	12	9	2	40	3	25
Aug. 1	13	2	11	3	29	4	17
2	15	7	5	1	28	5	24
3	6	11	5	1	23	6	18
	97	65	54	18	234		169
FIFTH WEEK.							
4	8	9	10	3	30	7	10
5	6	8	11	6	31	8	9
6	9	14	9	9	41	9	14
7	9	10	10	5	34	10	15
8	12	6	12	9	39	11	7
9	7	7	4	5	23	12	12
10	17	5	16	4	42	13	11
	68	59	72	41	240		78
PART OF SIXTH WEEK.							
11	9	5	8	6	28	14	8
12	11	7	13	4	35	15	8
13	4	1	3	2	10	16	8
14	9	3	6	2	20	17	8
	33	16	30	14	93		32
Total of 1832.....						1615	
Total of 1834.....						1169	
						446	

Statement of the Marine Hospital from the 20th July, (the day on which it was opened) to the 14th August inclusive:
 Admitted since the 20th July.....202
 Deaths.....104
 Discharged..... 69
 Remaining on the 15th Augt. 29
 ——— 202

J. Z. NAULT, Secretary.

