

PAGES

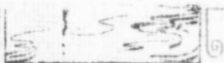
MISSING

2

n d

ST. CATHARINES

ONTARIO
CANADA



A GREAT
PROPOSITION
FOR THE
MANUFACTURER



JEWELRY

WHEN buying jewelry one wants something that will wear and look well. All goods carried by us are sure to meet with your approval, and the wearing quality you are always sure of.

—EVERY LINE COMPLETE—

Watches Clocks Jewelry
Cut Glass Optical Goods Umbrellas

W. W. TYRRI L
Jeweler and Optician, Issuer of Marriage Licenses
ST. CATHARINES, ONTARIO

The Sovereign Bank of Canada.



Capital subscribed
\$1,000,000.00

(Fully subscribed at 25
per cent. premium.)

Collections on all points in
Canada and in the United
States promptly made.

*Bankers and
Correspondents*

New York—J. P. Morgan
& Co., The Standard Trust
Co., The National Bank
of Commerce. London—
J. S. Morgan & Co. Paris
—Morgan, Haries & Co.

St. Catharines Branch—Any information desired
by manufacturers, capitalists, tourists, or others, re-
specting this city and locality, in my knowledge, will
be cheerfully given on application either personally
or by letter. *D. B. CROMBIE, Manager.*

Also member Council Board of Trade.

— *When You Visit* — *St. Catharines, Canada*

SEE THAT YOUR ORDERS FOR

Prescription Work, Drugs,
Medicines & Toilet Articles

ARE FILED AT

Walker & Abbs'
DRUG STORE

None but legally qualified Chemists employed.

QUEEN ST., NEAR POST OFFICE. PHONE 102

St. Catharines

THE City of St. Catharines is the chief place on the Niagara Peninsula, and contains 16,000 inhabitants with its environments, the adjoining towns of Merritton and Thorold on the one side and Port Dalhousie on the other.

It has excellent railroad facilities, being 12 miles from Niagara Falls, on the main line of the Grand Trunk Railway System. The new and old Welland canals form a water belt around the city and afford good shipping opportunities, as well as unlimited power.

St. Catharines has become well and favorably known for its pleasant situation, salubrious climate and the beauty of its surroundings, owing to location, having Lake Ontario on the north and Lake Erie on the south. It is climatically the mildest point in Canada east of the Rocky Mountains.



The Power House at DeCew Falls.

If there was nothing to commend St. Catharines further than its location, there must necessarily grow into prominence a residential city; but when with its situation, account is taken of the large amount of manufacturing now being carried on in the city, and Merritton, Thorold and Port Dalhousie, competitive transportation facilities by water and rail, its further industrial progress is assured.

The proximity of DeCew's Falls to the city ensures to manufacturers a supply of almost unlimited electric power. The fall at this point is 288 feet, and the present development is 10,000 horse power, and the output will be trebled during the present summer. How much of this power can you use?

Hamilton, situated 33 miles distant, is supplied with a portion of this power. It is safe to state that over 50,000 electric horse power can be developed at

DeCew's Falls an occasion demands. A large portion of this power is now being used in St. Catharines for manufacturing and lighting purposes. The Lincoln Electric Light and Power Company, which supplies the local market, is composed of energetic men who are bending their energies in the direction of securing new industries, and the rates for power for manufacturing purposes which are being offered cannot but bring about the desired result.

St. Catharines as a Home for the Working Man

St. Catharines is so situated that it is a paradise so far as homes are concerned for the working man and factory mechanic.

The city is spread over considerable territory; there is no detrimental congestion of population, causing excessive and exorbitant prices for building lots. The centre of the city is almost completely built up, but the outskirts of the city extending north, east and west, allow of exceptional facilities for the unlimited building of houses as required by the steady and healthy growth and expansion of the city.

Land in this quarter is very cheap, and the natural shade offered by the many trees in this, the most fertile section of the city, makes it, notwithstanding its cheapness, the prettiest, and with the excellent trolley service afforded by the Niagara, St. Catharines & Toronto R. R., one of the most convenient localities in which to build pretty and cheap houses.

Mechanics and factory hands do not put in a mere existence as in some crowded city. Come to St. Catharines, the Garden City of Canada, where you will find excellent employment in the many fine factories, also give your wives and children the benefit of pure, fresh air, and possibility of owning a small picturesque home with no more outlay per month in many cases than you would pay for the rent of an ordinary dwelling or flat in the hot and unpleasant environment of some of the crowded cities.

The educational facilities are good, prominent being Ridley College—two separate school buildings for junior and senior boys, about one hundred of whom reside in the schools. Boys are prepared for the University, and all professions as well as business.



Golf Club House.

A Famous Feature

In the Garden City of Canada, eleven miles from Niagara Falls, is situated the historic St. Catharines Well, about which is woven many a romantic Indian legend, and whose curative properties are known far and wide throughout North America.

For the overworked business man St. Catharines possesses exceptional facilities for recuperation. Climatically the mildest point in Canada; geographically situated on a peninsula between Lakes Erie and Ontario, surrounded by a water belt in the two Welland canals; luxuriant orchards and prolific vineyards are interspersed by pretty water stretches, the whole combining to produce an ideal health resort.



The Welland.

Nature has bestowed on the "Garden City" one of her greatest blessings in the "St. Catharines Well", which, for recuperative qualities has no rival in North America. It is a strong mineral salt spring, considerably denser than sea water, and a splendid antidote for such diseases as rheumatism, neuralgia, sciatica, gout, liver troubles and nervous cases. The waters are applied under care of an experienced physician, and their use is accompanied by electricity, massage, diet, etc.

To assist nature in carrying out a successful program, art has added "The Welland", which is neither a hotel nor sanitarium, but a successful combination of both. In its colonial exterior will be found elegant comfort. From its roof promenade and sun room to its music room in the basement there is the same aim in view—the comfort and recuperation of its patrons. Each room has long distance phone and modern equipment. Private parlors and baths can be furnished.

Facilities for lawn bowling, golf, boating, fishing, beach bathing, three different trolley routes, lovely drives and walks, permanent course of C. A. O. A.

Rates \$2.50 to \$3.50 per day. Apply Malcolmson Bros.

Transportation

St. Catharines is certainly very fortunate in its transportation facilities, both as to freight and passenger, being situated as it is on the main line of the Grand Trunk Railway, the Welland Division of the Grand Trunk Railway, the main line of the Niagara, St. Catharines & Toronto Railway, and the Port Dalhousie branch connecting with the Niagara, St. Catharines & Toronto Navigation Co. for Toronto. The freight yard of the main line of the Grand Trunk Railway is situated within easy distance of the manufacturing interests, while the freight yards of the Niagara, St. Catharines & Toronto Railway & Navigation Co. and the Welland Division are situated in practically the heart of the manufacturing district, the Grand Trunk Railway having the following close connections at Suspension Bridge: Erie R. R., Leigh Valley R. R., and at Black Rock with the Erie R. R., D., L. & W. R. R., and the New York Central. The following fast freight and despatch lines also operate over the Grand Trunk Railway: National Despatch Line, Merchants' Despatch Transportation Co., Milwaukee & Michigan Line, Hoosac Tunnel Line, R., W. & O. Line, Leigh Valley Despatch, and the Erie Despatch.

The Niagara, St. Catharines & Toronto Railway has the following connections: at Suspension Bridge,



through the Michigan Central R. R., the New York Central & H. R. R., including West Shore and R., W. & O. Division, Erie R. R., Leigh Valley; also at Black Rock, the N. Y. C. & H. R. R., and through them the entire Vanderbilt System, which covers over 8,000 miles of tracks, the Buffalo, Rochester & Pittsburg R. R., Pennsylvania R. R., New York, Chicago & St. Louis, Erie R. R., D., L. & W. R. R. The following fast freight lines operate over the Niagara, St. Catharines & Toronto Railway & Navigation Co.: Merchants' Despatch & Transportation Co., Blue Line, Canada Southern R. R., West Shore Despatch, Canadian Pacific Despatch, Erie Despatch and Leigh Valley Despatch. Also through the Michigan Central connection with all points in the west and south, and all points reached by the Canadian Pacific R. R. and

their connections, including new C. P. R. Atlantic Ocean service, to which through bills of lading are issued.

The railroads have ample facilities by their excellent location to reach factories and manufacturing industries with sidings. During the summer season boats operating between Toronto and St. Catharines form a through lake and rail route to and from the north and south, giving shippers the benefit of the lowest possible freight rate.

The Grand Trunk Railway, with its ten fast passenger trains in each direction daily on the main line, four on the Welland Division, the Niagara, St. Catharines & Toronto Railway with its hourly service between Niagara Falls, N. Y. and St. Catharines, and its four trips a day between Toronto and St. Catharines across the lake gives a passenger service to St. Catharines that is unsurpassed by any city of twice its size in Canada.

I t s F a c t o r i e s

We give a few of its leading industries :



THE WELLAND VALE WORKS.

The Welland Vale Manufacturing Company has been engaged in manufacturing axes, edge tools, saws, scythes, forks, hoes, rakes and other hand tools at Lock 2, old Welland Canal, for over 30 years. During that time their business has grown from small dimensions to embrace a great part of the trade of the Dominion. They also do a large export business. Their new factories are equipped with all the latest and best labor saving machinery, and their goods are recognized as the best of their kind. They ship to all parts of the Dominion, and their business is steadily growing with the growth of the country. Their factories are driven by water power derived from the old Welland Canal. They employ some 200 hands all the year round.

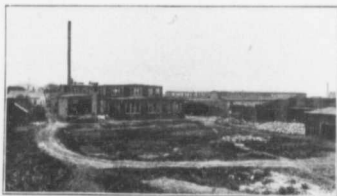
THE EMPIRE CARPET CO.

This establishment turns out a large variety of goods, which find a ready sale. The machinery is modern and the management progressive, consequently their goods are in demand, which is the best proof of success. The factory is located near the heart of the city.



THE WHITMAN & BARNES MANUFACTURING CO.

are engaged in the manufacture of various lines of goods—mower, reaper and binder knives, cutting apparatus, special woodworking machine knives, hammers of all kinds, and many other lines. Their goods are well known from Atlantic to Pacific, also in Europe, South America, Africa and Australia. They employ about 200 men.



GEO. WILSON & CO.

The firm of George Wilson & Co. consists of Mr. George Wilson and his son, Mr. Frederick W. Wilson. This firm is among the largest builders and contractors in the Niagara Peninsula. The office and mill are situated on Niagara street, to which location the firm moved after the destruction by fire of their premises on Wiley and Nelson streets in the summer of 1900. On the lower floor of the new buildings are installed and in operation the most modern machinery and plant of the planing and sawing mill department. The upper floor is devoted to the box factory, which is amply equipped with the most improved machines and appliances to turn out complete, six to seven thousand boxes a day of every kind in general use.

THE KINLEITH PAPER CO.

This plant is thoroughly modern in every respect, and the premises and site admirably adapted for the purposes of the company. The present capacity of the



mills in ten tons daily, but the demand for the high grade product of the company is such that the installation of a second paper machine is an absolute necessity to keep pace with orders received.



Steamer Lakeside.



BLACK & DAVIDSON.

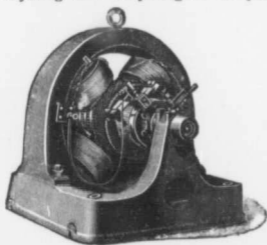
The flour mill operated by this firm is equipped with modern roller machinery, and their grade of goods is high. The firm take a pride in having everything in good shape.

St. Catharines has many other factories, amongst which we mention :

- The McKinnon Dash & Metal Works.
- The R. H. Smith Saw Works.
- The Warren Electric and Specialty Co.
- The Ontario Pure Food Co.
- Taylor & Bate's Brewery.
- The Packard Electric Works.
- The Lincoln Paper Mill.
- Henry Wise, Planing Mill.
- The Maple Leaf Rubber Co.

Manufacturers' Attention

When it comes to the question of installing electric plants, and power motors for the factory, The Martin Electric Supply Co. are quite capable of undertaking anything and everything for the proper equipment of



motors, and wiring for electric light. The above company have already placed several plants in some of the largest industries in this locality. They are agents for the well known Ampere alternat-

ing motor, which is manufactured and with headquarters at Montreal. These motors are made in all sizes from 1 1/2 to 300 horse power. They are also agents for the Toronto and Hamilton Electric Co's. direct current motor. They are always pleased to give estimates and assist parties interested in any under-

M C L A R E N & C O .
Limited
D e p a r t m e n t S t o r e

PEOPLE coming to St. Catharines will find in the McLaren stocks almost infinite choice of goods for men, women and children's wear and homefurnishing. Being direct importers from European and American markets, and dealing direct with home manufacturers, we are in a position to offer every store service expected in the large centres. Cash buying and *Cash and One Price to All* selling enables us to give the very lowest prices. In furnishing homes and offices complete we are particularly able to give interesting quotations.

Twenty-six departments constitute the complete store, and each section carries large and varied stocks, offering a splendid breadth of choice. In novelties and the finer grade of merchandise we possibly exceed your expectations in securing the very latest and newest things.

This is one of the largest and most complete stores in Canada; in fact, no other city this size in the Dominion can claim such a complete retail institution.

Visitors are always welcome.

McLaren & Co., Limited
17, 19 & 21 St. Paul Street
St. Catharines, Ontario

taking in the electric line. Their workmanship is only first-class, like the apparatus they install. They have had a long and varied experience in all branches of electrical work.

The prospect of St. Catharines is depending on its ability to attract and secure manufacturers to the city. The Martin Electric Supply Company, seeing the great future and attractions for new industries, have established themselves in the midst of what they think will be, and is fast becoming a centre of manufacturing industries.

To those who contemplate locating their factories or plant in or near St. Catharines, they would do well to make enquiries for all electrical appliances necessary from the above company, who can give full particulars and estimates to those who may wish any information upon this point.



THE SOVEREIGN BANK OF CANADA
St Catharines Branch



THE NEW MURRAY

A modern hotel recently equipped in a thoroughly up-to-date manner



CANADA HAIR CLOTH WORKS



McLAREN & CO., LIMITED

Front view of their fine, large departmental store
on St. Paul Street, near The Welland

S T . C A T H A R I N E S M I N E R A L W A T E R

The wells at St. Catharines, Ontario, are known all over the world for a water which has remarkable curative properties.

St. Catharines Mineral Water is good to drink, whether as a healthy beverage or as a remedy for the diseases that come from high living or an overworked stomach.

We are bottling this water in our modern bottling plant, direct from the well, perfectly pure.

It is being sold through grocery stores all over Canada.

It is an excellent water as a household, table or drinking water, or for clubs, restaurants and hotels.

It is good to drink either as straight water or as a vehicle for highballs. Until you have tried it you have never known how good a highball can be. Any good whiskey will do, but the mineral water should be St. Catharines.

All good grocers keep it. If your's doesn't, write direct to the Mack Mineral Springs Company, Limited, St. Catharines, Ontario.

A COURSE IN ADVERTISING
BY MAIL FOR

One Dollar

The most practical instruction possible to receive may be had by reading each issue of IMPRESSIONS regularly. Live articles by the very best authorities. One dollar a year.

THE PRINT SHOP
ST. CATHARINES, -:- ONTARIO



Senior School, Ridley College
St. Catharines

INKSATER BROS.

— DIRECT IMPORTERS OF —
*Fine Dry Goods, Millinery,
Gloves, Hosiery, Mantles and
House Furnishings.*

PRICES may bring you to our store, but the veracity of our statements, the stability of our merchandise, is what secures your permanent patronage.

INKSATER BROS.
27 St. Paul St. : : St. Catharines

St. Catharines Board of Trade

OFFICERS

Robert McLaren - - President
George Burch - Vice-President
J. S. Campbell - - - Secretary
G. W. Hodgetts - - Treasurer

COUNCIL

The Officers and	J. T. Groves
Geo. C. Carlisle	M. Y. Keating
C. A. Case	A. H. Malcolmson
W. W. Cox	Alex. McLaren
D. B. Crombie	E. F. Seixas

The James D. Tait Co.
LIMITED
St. Catharines, Ontario

THE largest and best assorted stock
of *Dry Goods of every description*,
including Dress Goods, Silks,
Laces, Linens, Hosiery, Carpets, Millinery
and Ladies' Ready-to-Wear Garments.

INSPECTION INVITED

MANUFACTURING FURRIERS

A specialty of long standing with us. Every
class of garment made up from choice
selected skins. See our made up selection.

The James D. Tait Co., Limited.
*St. Catharines' Largest Exclusive
Dry Goods House*

Telephone 101

Clarence W. Hellems

Successor to W. W. GREENWOOD

Druggist

Toilet Articles, Etc. Prescription Department
Accurate. * Prompt attention to correspondence.
Night Service.

St. Paul St., *Opposite* *St. Catharines*
Queen

COY BROS. & SOUTHCOTT

Hardware

*Fishing Tackle, Guns, Ammunition, Etc.
Contractors' and Builders' Hardware.
Housefurnishing Goods, Paints, Oils, Etc.*

ST. CATHARINES, ONTARIO.

GEO. B. DARKER

45 St. Paul Street : St. Catharines, Ont.

EVERYTHING IN DRY GOODS.
NOTHING BUT DRY GOODS.

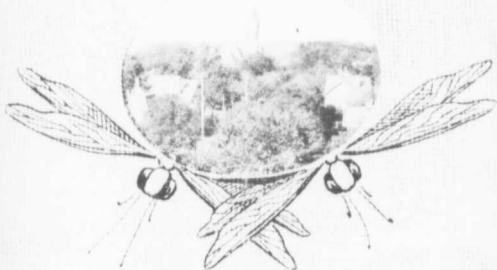
Dress Goods Dress Trimmings
Hosiery and Gloves Ribbons and Laces
Ready-to-Wear Garments
Costumes, Skirts, Coats Lace Curtains
Curtain Nets
Staple and Fancy Dry Goods

GEO. B. DARKER, 45 ST. PAUL ST.

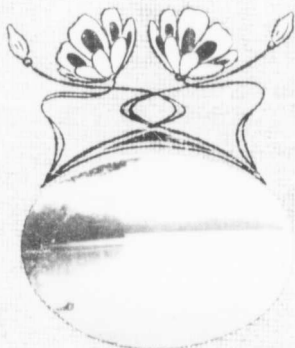
S. P. Gourlay

STEAM, HOT WATER AND HOT AIR
HEATING. FINE SANITARY PLUMB-
ING. METAL WORK, IRON PIPE &
FITTINGS. ENGINEERS SUPPLIES.
ALL WORK GUARANTEED.
ESTIMATES FURNISHED.

King Street, Opp. Post Office
St. Catharines, Ontario



View of St. Catharines from the roof
of *The Welland*, Canada's
Health Resort.



The C. A. O. A. Regatta Course
The Canadian Henley.