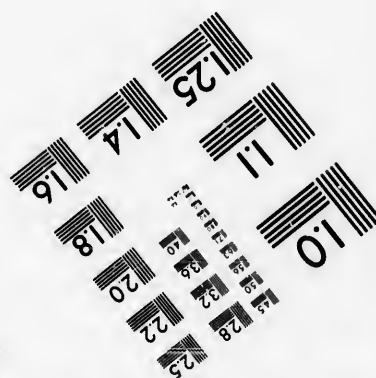
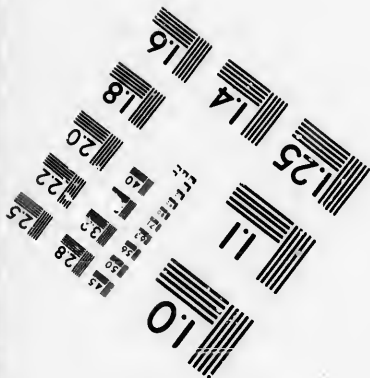
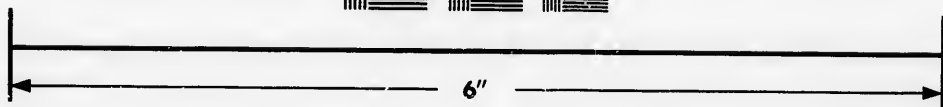
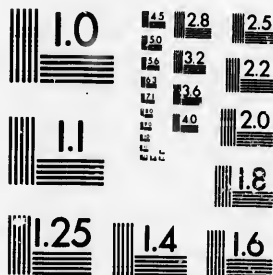


**IMAGE EVALUATION
TEST TARGET (MT-3)**



**Photographic
Sciences
Corporation**

23 WEST MAIN STREET
WEBSTER, N.Y. 14580
(716) 872-4503

**CIHM/ICMH
Microfiche
Series.**

**CIHM/ICMH
Collection de
microfiches.**



Canadian Institute for Historical Microproductions / Institut canadien de microreproductions historiques

© 1986

Technical and Bibliographic Notes/Notes techniques et bibliographiques

The Institute has attempted to obtain the best original copy available for filming. Features of this copy which may be bibliographically unique, which may alter any of the images in the reproduction, or which may significantly change the usual method of filming, are checked below.

L'institut a microfilmé le meilleur exemplaire qu'il lui a été possible de se procurer. Les détails de cet exemplaire qui sont peut-être uniques du point de vue bibliographique, qui peuvent modifier une image reproduite, ou qui peuvent exiger une modification dans la méthode normale de filmage sont indiqués ci-dessous.

- | | |
|--|--|
| <input type="checkbox"/> Coloured covers/
Couverture de couleur | <input type="checkbox"/> Coloured pages/
Pages de couleur |
| <input type="checkbox"/> Covers damaged/
Couverture endommagée | <input checked="" type="checkbox"/> Pages damaged/
Pages endommagées |
| <input type="checkbox"/> Covers restored and/or laminated/
Couverture restaurée et/ou pelliculée | <input type="checkbox"/> Pages restored and/or laminated/
Pages restaurées et/ou pelliculées |
| <input type="checkbox"/> Cover title missing/
Le titre de couverture manque | <input checked="" type="checkbox"/> Pages discoloured, stained or foxed/
Pages décolorées, tachetées ou piquées |
| <input type="checkbox"/> Coloured maps/
Cartes géographiques en couleur | <input type="checkbox"/> Pages detached/
Pages détachées |
| <input type="checkbox"/> Coloured ink (i.e. other than blue or black)/
Encre de couleur (i.e. autre que bleue ou noire) | <input checked="" type="checkbox"/> Showthrough/
Transparence |
| <input type="checkbox"/> Coloured plates and/or illustrations/
Planches et/ou illustrations en couleur | <input type="checkbox"/> Quality of print varies/
Qualité inégale de l'impression |
| <input type="checkbox"/> Bound with other material/
Relié avec d'autres documents | <input type="checkbox"/> Includes supplementary material/
Comprend du matériel supplémentaire |
| <input type="checkbox"/> Tight binding may cause shadows or distortion
along interior margin/
La reliure serrée peut causer de l'ombre ou de la
distorsion le long de la marge intérieure | <input type="checkbox"/> Only edition available/
Seule édition disponible |
| <input type="checkbox"/> Blank leaves added during restoration may
appear within the text. Whenever possible, these
have been omitted from filming/
Il se peut que certaines pages blanches ajoutées
lors d'une restauration apparaissent dans le texte,
mais, lorsque cela était possible, ces pages n'ont
pas été filmées. | <input type="checkbox"/> Pages wholly or partially obscured by errata
slips, tissues, etc., have been refilmed to
ensure the best possible image/
Les pages totalement ou partiellement
obscurcies par un feuillet d'errata, une pelure,
etc., ont été filmées à nouveau de façon à
obtenir la meilleure image possible. |
| <input type="checkbox"/> Additional comments:/
Commentaires supplémentaires: | |

This item is filmed at the reduction ratio checked below/
Ce document est filmé au taux de réduction indiqué ci-dessous.

10X	14X	18X	22X	26X	30X
<input type="checkbox"/>	<input type="checkbox"/>	<input type="checkbox"/>	<input type="checkbox"/>	<input checked="" type="checkbox"/>	<input type="checkbox"/>
12X	16X	20X	24X	28X	32X

The copy filmed here has been reproduced thanks to the generosity of:

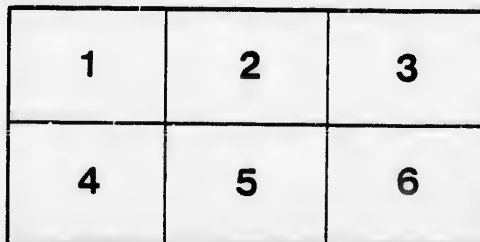
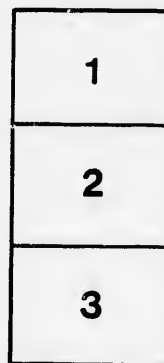
D. B. Weldon Library
University of Western Ontario
(Regional History Room)

The images appearing here are the best quality possible considering the condition and legibility of the original copy and in keeping with the filming contract specifications.

Original copies in printed paper covers are filmed beginning with the front cover and ending on the last page with a printed or illustrated impression, or the back cover when appropriate. All other original copies are filmed beginning on the first page with a printed or illustrated impression, and ending on the last page with a printed or illustrated impression.

The last recorded frame on each microfiche shall contain the symbol \rightarrow (meaning "CONTINUED"), or the symbol ∇ (meaning "END"), whichever applies.

Maps, plates, charts, etc., may be filmed at different reduction ratios. Those too large to be entirely included in one exposure are filmed beginning in the upper left hand corner, left to right and top to bottom, as many frames as required. The following diagrams illustrate the method:



L'exemplaire filmé fut reproduit grâce à la générosité de:

D. B. Weldon Library
University of Western Ontario
(Regional History Room)

Les images suivantes ont été reproduites avec le plus grand soin, compte tenu de la condition et de la netteté de l'exemplaire filmé, et en conformité avec les conditions du contrat de filmage.

Les exemplaires originaux dont la couverture en papier est imprimée sont filmés en commençant par le premier plat et en terminant soit par la dernière page qui comporte une empreinte d'impression ou d'illustration, soit par le second plat, selon le cas. Tous les autres exemplaires originaux sont filmés en commençant par la première page qui comporte une empreinte d'impression ou d'illustration et en terminant par la dernière page qui comporte une telle empreinte.

Un des symboles suivants apparaîtra sur la dernière image de chaque microfiche, selon le cas: le symbole \rightarrow signifie "A SUIVRE", le symbole ∇ signifie "FIN".

Les cartes, planches, tableaux, etc., peuvent être filmés à des taux de réduction différents. Lorsque le document est trop grand pour être reproduit en un seul cliché, il est filmé à partir de l'angle supérieur gauche, de gauche à droite, et de haut en bas, en prenant le nombre d'images nécessaire. Les diagrammes suivants illustrent la méthode.

LONDON P78 & LITHO. CO.

MICHIGAN, OHIO
CANADIAN CIRCUIT

THEATRES

CLEVELAND, CINCINNATI, BUFFALO,
DETROIT, TORONTO,
TOLEDO, LONDON, HAMILTON,
WOODSTOCK, SAGINAW,
GRAND RAPIDS, BAY CITY AND
JACKSON.



C. J. WHITNEY. A. E. ROOTE. ONTARIO.
LESSEE. MANAGER.



W. SMITH. E. HOLLAND. W. S. PARTRIDGE.

SMITH & BROS.

THE
LEADING
SANITARY
PLUMBERS
AND
HEATING
ENGINEERS
OF
WESTERN
ONTARIO.

376
RICHMOND STREET, LONDON.
OPPOSITE GRAND OPERA HOUSE BUILDING.

A full stock of Supplies always on hand.

TELEPHONE 533.

(London Printing and Litho. Co.)

LADIES! THE ONLY WAY TO GET HELP IS THROUGH THE "FREE PRESS" WANT COLUMN.



**Parisian
Steam
Laundry**

73 & 75 DUNDAS STREET.

BRANCH OFFICES:

226 Dundas St. 752 Waterloo. 410 Hamilton Rd.
280 " " 572 Pall Mall. 251 Wellington.
310 " " 389 Richmond. 335 Ridout.
632 " " 485

J. K. SPRY, Manager.

HUESTON'S

**LIVERY,
Goupe & Cab Stables**
WELLINGTON STREET.

Finest Horses and Carriages in the City.
OPEN DAY AND NIGHT. TELEPHONE 441.

ROBT. HUESTON,
Proprietor.

H. McKENNA,
—FOR—

**Choice Cigars, Tobaccos
AND PIPES.**

ALWAYS OPEN
..... AFTER THE OPERA.

225 DUNDAS STREET.

RIVARD

The Leading Hatter
and Furrier
HAS THE FINEST STOCK OF
FURS

IN THE CITY TO SELECT FROM.
HIS PRICES ARE RIGHT!

Rivard

London's Fashionable Hatter
and Furrier,
400 RICHMOND-ST.

WILLIAMS' Pianos CANADA'S FAVORITE

Cannot be excelled for touch, singing quality, delicacy and great power of tone, with highest excellence of workmanship.

ALL THE LATEST VOCAL AND INSTRUMENTAL MUSIC RECEIVED AS PUBLISHED.

Musical Instruments of all kinds, Strings and Fittings AT LOWEST PRICES.

R. S. WILLIAMS & SON, 171 DUNDAS STREET, LONDON, ONT.
J. A. CPDEN, Manager.

PROGRAMME

MATINEE SATURDAY.

Thursday, Friday & Saturday
THE California Opera Co.

Jan 29-30-31 1894
..... THURSDAY EVENING

PLAQUETT'S THREE ACT OPERA,
Chimes of Normandy

CAST OF CHARACTERS.

Serpolette—the Good-for-Nothing Miss Josephine Stanton
Germaine—the Lost Marchioness Miss Rita Harrington
Henri Marquis de Corneville Mr. W. E. Hubbard
Jean Grenicheux—a Fisherman Mr. Henry Hallam
Gaspard—a Miser Mr. Jno. Saunders
Bailli Mr. Tuck. Springer
Notary Mr. Jno. Henderson
Gertude, Peasant Miss Sadie Weston
Jeanne. Girls Miss Lottie Randall
Peasants, Fishermen, Sailor, etc.

... FRIDAY EVENING ...

GIROFLE-GIROFLA

CAST OF CHARACTERS.

Girofle-Girofla Miss Josephine Stanton
(Late of Lillian Russell Opera Co.)
Aurora Miss Adele Barker
Pedro Miss Rita Harrington
Marasquin Mr. Henry Hallam
Mourzourk Mr. W. E. Hubbard
Pacquita Miss Sadie Weston
Don Bolero Mr. John Saunders
Pirate Chief Mr. V. H. Bond
Fernande Miss May Hart
Guzman Miss Lottie Randall
Peasants, Cousins, Pirates, Moors, etc.

(Programme continued on next page.)

SOMETHING NEW.

Opera English & Canadian
Caramels. Chocolate Creams.
VERY FINEST Olives in Bulk.
French Crystalized .. Fresh Roquefort Cheese..
FRUITS.

FITZGERALD, SCANDRETT & CO.
139 Dundas Street.

ESTABLISHED 1831.

**H. DAVIS & SON,
WATCHMAKERS
AND
JEWELLERS**

DEALERS IN
Watches, Clocks, Jewellery, Spectacles,
Silver Plated Ware, &c.

170 DUNDAS ST., LONDON, ONT.

W. T. STRONG

Dispensing
Chemist,

184 Dundas Street,
LONDON, - ONTARIO.

BROWN'S

Central Shoe Store,

145 DUNDAS ST.



We inventory February 20th, and are determined to reduce our Stock as much as possible before that date. To do this, we have cut down prices to a figure heretofore unheard of for such quality of goods. This Great Reduction will place the best selected stock of Staple and High-Grade Shoes within the reach of all.

REMEMBER, WE KEEP NO INFERIOR OR

SHODDY GOODS.

... EVERY LINE OF ...

BOOTS, SHOES, SLIPPERS, RUBBERS, OVERSHOES,
OVERGARTERS, LEGGINGS, MOCCASINS, ETC.,

IS THE BEST OF ITS KIND.

Our position enables us to sell cheaper than any other shoe store in this western section; but this Special Reduction cannot fail to further convince the Public, that for reliable footwear in all Standard Styles, "Brown's is undoubtedly the Cheapest."

THIS CUT-DOWN-PRICE

—will also apply to our—

HANDSOME AMERICAN DESIGNS IN

LADIES' AND GENTS' DRESS SHOES,
WALKING, SKATING AND HOCKEY BOOTS;

Also our Complete, and unexcelled (for Style and Finish) assortment of YOUTHS', MISSES', BOYS', GIRLS' AND BABY SHOES.

NO RESERVE.

John S. Brown,
TELEPHONE 881.

IF YOU WANT THE BEST, TAKE THE "FREE PRESS." ALL THE NEWS!

IF YOU SEE IT IN THE "LONDON FREE PRESS," IT IS SO!

—GO TO—
SOUTHCOTT'S
 —FOR YOUR—
Overcoating
 —OR—
FALL & SUITING
 AND GET SATISFACTION AT
 CLOSE PRICES.
361 RICHMOND STREET.

I-I-I-I-I-I-I-I-I-I

PRINTERS
 LITHOGRAPHERS
 ENGRAVERS

The _____
London
Printing and
Lithographing
Co'y, SUCCESSIONS TO FREE PRESS
 PRINTING AND LITHO.
 DEPARTMENTS.

"OFFICE,
 'FREE PRESS'
 BUILDING.

BEST WORK
 AT MODERATE
 PRICES.

I-I-I-I-I-I-I-I-I-I

TEGUMSEH HOUSE
 LONDON.



Directly opposite G.T.R depot;
 street railway past the doors;
 convenient to all the wholesale
 and retail business houses of
 city, making it the most desir-
 able hotel in the city; elevator,
 and heated throughout with
 steam.

Porter in attendance on
 arrival of all trains.

RATES, \$2.00 AND \$2.50
 PER DAY,

ACCORDING TO LOCATION.

No Extra Charge For Baggage.

C. W. DAVIS, PROP.

LATEST SHAPES

In American and English

Spring Hats

JUST OPENED.

GRAHAM BROS.,

Leading Hatters and Furnishers.

«Programme Continued.»

... SATURDAY MATINEE ...

Balfe's Charming Opera in Three Acts,

THE BOHEMIAN GIRL.

CAST OF CHARACTERS.

Count Arnheim Mr. W. E. Hubbard
 Florestine Mr. John Henderson
 Thaddeus, a Proscribed Pole Mr. Henry Hallam
 Devilshoof, a Gypsy Mr. Tuck Springer
 Captain of the Guard Mr. V. H. Bond
 Officer Mr. E. Groppe
 Arline, Count Arnheim's Daughter Miss Josephine Stanton
 Queen of the Gypsies Miss Rita Harrington
 Buda, a Nurse Miss Lottie Randall
 Soldiers, Hunters, Peasants, Gypsies, etc.

... SATURDAY EVENING ...

Richard Stahl's Beautiful Two Act Opera,

SAID PASHA

CAST OF CHARACTERS.

Said Pasha, a Turkish Diplomat Mr. Tuck Springer
 Hassen Bey, Captain of Body Guard Mr. W. E. Hubbard
 Terrano, a Mexican Nobleman Mr. Henry Hallam
 Hadad, an Adventurer Mr. John Saunders
 Nocky, his Companion Mr. John Henderson
 Rajah of Altara Mr. E. Groppe
 Trubadad, a Sergeant Mr. V. H. Bond
 Serena, the Pasha's Daughter Miss Josephine Stanton
 Altı, Queen of Altara Miss Rita Harrington
 Balah Sojah, the Rajah's Sister Miss Adele Barker
 Punja, } Altı's { Miss Lottie Randall
 Senior } Attendants { Miss Sadie Weston
 Turkish Soldiers, Ladies of the Harem, Mexicans, Indians, etc.

STAFF.

Saunders, Henderson & Hall, Props. Fred Hall Treasurer
 John Saunders Manager J. H. Rohan Musical Director
 John M. Howard, Business Manager V. H. Bond Stage Manager
 Opera produced under the personal direction of Mr. John Henderson.

Costumes by Mrs. Louise Hazaman, Chicago.

The Comic Songs used in this Opera are published by M. Witmark &
 Louis, 47 West 28th Street, New York City.

(Programme continued on last page.)

McLEAN'S HARDWARE

—FOR—

Bissell's Carpet Sweepers.

WE CAN SHOW YOU TWELVE DIFFERENT STYLES SAME
 AS ARE NOW DISPLAYED BY THE BISSELL COM-
 PANY AT THE WORLD'S FAIR.

CALL AND SEE THESE GOODS

—AT—

McLEAN'S HARDWARE,
 151 Dundas Street.

Wm. Stevely & Son,

—THE LEADING DEALERS IN—

STOVES, RANGES,

... AND ...

HOUSE FURNISHING GOODS.

OUR STOCK IS THE LARGEST.

OF PRICES THE LOWEST.

362 RICHMOND STREET.

'PHONE 452.

W. T. STRONG,

Dispensing

Chemist,

184 DUNDAS ST..

LONDON, ONT.

... FOR ...

Fine Etchings....

—AND—

Engravings

—TRY—

O. B. GRAVES,

222 DUNDAS STREET.



BRENER BROS.

LONDON ONT.

FOR SALE AT

JOE RANKIN'S

... OPPOSITE MASONIC TEMPLE.

LOOK OUT FOR THE "LONDON FREE PRESS" ON ALL EARLY MORNING TRAINS.

GLOVES
— IN —
SILK & KID
— IN —
18 to 30 inch,
IN ALL THE NEW SHADES.

TELEPHONE 611.

OPERA
FANS

EVENING GOODS

A. Rolfe

OPERA
HOSE

We show the largest
range of
S.I.L.K.S
IN THE CITY.

OUR NEW **Velour Cloth**
IS THE LATEST.
In all the New Tints,
With Trimming to Match.

FINE DRESSMAKING.

202 DUNDAS STREET.

EDY BROS.

The Artistic Photographers,

— RECEIVED —

Three First Prizes

— AND —

DIPLOMA

For Finest Display of Photography
AT WESTERN FAIR, 1893.

Cabinet Photos, \$3 per doz.

EDY BROS.

214 DUNDAS STREET.

The **HUB**

Restaurant,

203 & 205 DUNDAS STREET.

For a NICE LUNCH after the
Opera, go to the
Hub Restaurant.

Steaks, Chops, Chicken,
Oysters, Etc.

OPEN TILL 12.00 P.M.

J. W. MARTIN, Prop.
(Late of the Martin House)

«Programme Concluded.»

N. B.—The Orchestra of the Grand Opera House may be secured for engagements outside the theatre, by applying at or addressing the Box Office.

The Furniture used on stage is supplied by JOHN FERGUSON & SON, Furniture Manufacturers.

NEXT + ATTRACTION

ONE WEEK, COMMENCING MONDAY,
FEBRUARY 5TH.

MATINEES WEDNESDAY AND SATURDAY.

**Ida
Van
Cortland.**

PRICES: 10c., 25c. and 35c.

A FINE PERFORMANCE

is a satisfactory return
for your money, but when
you can get from us a
superior quality of Coal
or Wood at the same price
you would pay for an in-
ferior quality, it is even
more satisfactory. When
in need of "warmth," try
us.

CAMERON'S

421 RICHMOND STREET,
and BURWELL STREET at G. T. R.

WE call the attention of our business men to the PROGRAM as an advertising medium. It reaches the class of people whose trade you want, and the way to get that trade is to make yourself known.

BELTON & ROOTE,

BILL POSTING,

DISTRIBUTING

...AND...

GENERAL ADVERTISING AGENTS

Control all the Bill Boards and Dead Walls throughout the City. Population of City, 40,000.

All orders for Bill Posting, Distributing, Card Tacking, and General Advertising for Western Ontario will receive prompt attention.

OFFICE: BOX OFFICE, OPERA HOUSE.

Roses, Carnations,

Palms,

Ferns, Bulbs.

J. GAMMAGE & SONS,

218 Dundas Street.

INDIAN... TEA IMPORTING HOUSE.
CEYLON

NEW BLENDS, DELICIOUS AND ECONOMICAL, AT MODERATE PRICES.

"English Breakfast," "Five o'clock Tea," & "Club House" Blends.
60c. 50c. 45c.

These Blends are standard selections of choice Teas. Highly recommended to families for their fine quality and economical properties.

S. FUGE,

— IMPORTER OF —
CHOICE TEAS 212 Dundas St.
TELEPHONE 888. LONDON.

