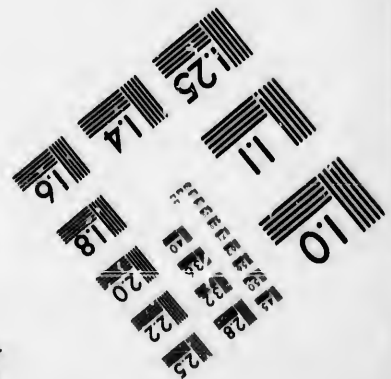
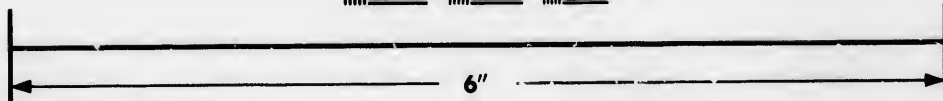
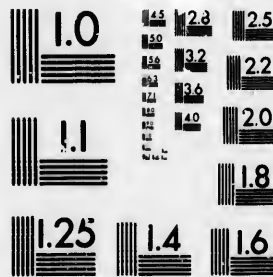


**IMAGE EVALUATION
TEST TARGET (MT-3)**



**Photographic
Sciences
Corporation**

23 WEST MAIN STREET
WEBSTER, N.Y. 14580
(716) 872-4503

**CIHM/ICMH
Microfiche
Series.**

**CIHM/ICMH
Collection de
microfiches.**



Canadian Institute for Historical Microreproductions / Institut canadien de microreproductions historiques

© 1985

The copy filmed here has been reproduced thanks to the generosity of:

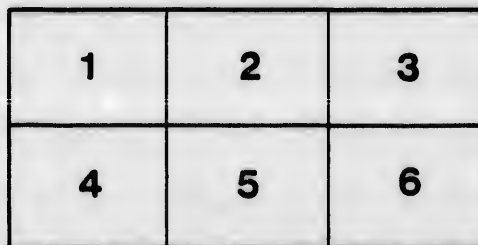
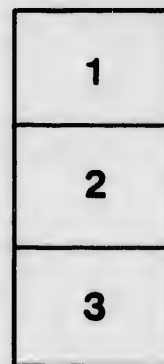
D. B. Weldon Library
University of Western Ontario
(Regional History Room)

The images appearing here are the best quality possible considering the condition and legibility of the original copy and in keeping with the filming contract specifications.

Original copies in printed paper covers are filmed beginning with the front cover and ending on the last page with a printed or illustrated impression, or the back cover when appropriate. All other original copies are filmed beginning on the first page with a printed or illustrated impression, and ending on the last page with a printed or illustrated impression.

The last recorded frame on each microfiche shall contain the symbol \rightarrow (meaning "CONTINUED"), or the symbol ∇ (meaning "END"), whichever applies.

Maps, plates, charts, etc., may be filmed at different reduction ratios. Those too large to be entirely included in one exposure are filmed beginning in the upper left hand corner, left to right and top to bottom, as many frames as required. The following diagrams illustrate the method:



L'exemplaire filmé fut reproduit grâce à la générosité de:

D. B. Weldon Library
University of Western Ontario
(Regional History Room)

Les images suivantes ont été reproduites avec le plus grand soin, compte tenu de la condition et de la netteté de l'exemplaire filmé, et en conformité avec les conditions du contrat de filmage.

Les exemplaires originaux dont la couverture en papier est imprimée sont filmés en commençant par le premier plat et en terminant soit par la dernière page qui comporte une empreinte d'impression ou d'illustration, soit par le second plat, selon le cas. Tous les autres exemplaires originaux sont filmés en commençant par la première page qui comporte une empreinte d'impression ou d'illustration et en terminant par la dernière page qui comporte une telle empreinte.

Un des symboles suivants apparaîtra sur la dernière image de chaque microfiche, selon le cas: le symbole \rightarrow signifie "A SUIVRE", le symbole ∇ signifie "FIN".

Les cartes, planches, tableaux, etc., peuvent être filmés à des taux de réduction différents. Lorsque le document est trop grand pour être reproduit en un seul cliché, il est filmé à partir de l'angle supérieur gauche, de gauche à droite, et de haut en bas, en prenant le nombre d'images nécessaire. Les diagrammes suivants illustrent la méthode.

rrata
to

pelure,
n à



32X

NOT

The subscriber begs to avail himself of the accommodation caused by the officious interference of certain parties attached to his name ; to let his friends and future allow either letter or newspaper to leave his hands unless the full amount of postage is paid thereon.

To men in business having extended correspondence, the present accommodation as formerly, viz. : to make quarterly express conditions that these payments will be made on the 1st day of every January, April, July, and October, in case of necessity put an end to such accommodation.

Parties wishing to avail themselves of this accommodation, please do so in writing, stating that they will abide by the conditions.

Every person must find the net amount of postage on all of their letters or newspapers.

NOTICE.

Post Office, Goderich, Nov. 20, 1848.

avail himself of the opportunity which the NOTORIETY
of certain parties within the last few days has
made known to his friends and the public know, that he will not in
any newspaper to leave his office, UNDER ANY CIRCUMSTANCES,
unless the postage is paid thereon.

For extended correspondence he willingly offers the same
terms: to make quarterly settlements, but only on the
payments will be made IN FULL on or before the 20th
of September, and October. Any failure in this respect will of
course be without accommodation.

Persons of this offer will please intimate the same
to those who will abide by these terms.

They must pay the net amount of change required, or risk the refusal

THOMAS KYDD, Postmaster.

