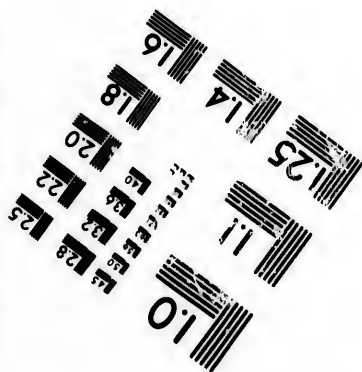
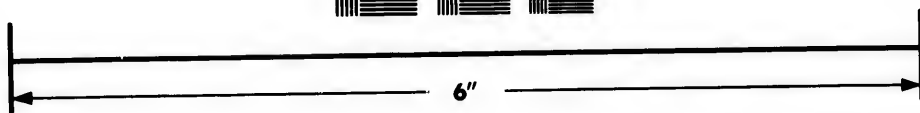
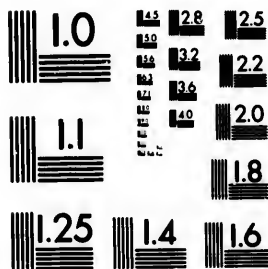


IMAGE EVALUATION TEST TARGET (MT-3)



Photographic
Sciences
Corporation

23 WEST MAIN STREET
WEBSTER, N.Y. 14580
(716) 872-4503

**CIHM/ICMH
Microfiche
Series.**

**CIHM/ICMH
Collection de
microfiches.**



Canadian Institute for Historical Microreproductions / Institut canadien de microreproductions historiques

© 1981

Technical and Bibliographic Notes/Notes techniques et bibliographiques

The Institute has attempted to obtain the best original copy available for filming. Features of this copy which may be bibliographically unique, which may alter any of the images in the reproduction, or which may significantly change the usual method of filming, are checked below.

L'Institut a microfilmé le meilleur exemplaire qu'il lui a été possible de se procurer. Les détails de cet exemplaire qui sont peut-être uniques du point de vue bibliographique, qui peuvent modifier une image reproduite, ou qui peuvent exiger une modification dans la méthode normale de filmage sont indiqués ci-dessous.

- ☐ Coloured covers/
Couverture de couleur
- ☐ Covers damaged/
Couverture endommagée
- ☐ Covers restored and/or laminated/
Couverture restaurée et/ou pelliculée
- ☐ Cover title missing/
Le titre de couverture manque
- ☐ Coloured maps/
Cartes géographiques en couleur
- ☐ Coloured ink (i.e. other than blue or black)/
Encre de couleur (i.e. autre que bleue ou noire)
- ☐ Coloured plates and/or illustrations/
Planches et/ou illustrations en couleur
- ☒ Bound with other material/
Relié avec d'autres documents
- ☒ Tight binding may cause shadows or distortion
along interior margin/
La reliure serrée peut causer de l'ombre ou de la
distortion le long de la marge intérieure
- ☐ Blank leaves added during restoration may
appear within the text. Whenever possible, these
have been omitted from filming/
Il se peut que certaines pages blanches ajoutées
lors d'une restauration apparaissent dans le texte,
mais, lorsque cela était possible, ces pages n'ont
pas été filmées.
- ☐ Additional comments:/
Commentaires supplémentaires:

- ☐ Coloured pages/
Pages de couleur
- ☐ Pages damaged/
Pages endommagées
- ☐ Pages restored and/or laminated/
Pages restaurées et/ou pelliculées
- ☒ Pages discoloured, stained or foxed/
Pages décolorées, tachetées ou piquées
- ☐ Pages detached/
Pages détachées
- ☒ Showthrough/
Transparence
- ☐ Quality of print varies/
Qualité inégale de l'impression
- ☐ Includes supplementary material/
Comprend du matériel supplémentaire
- ☐ Only edition available/
Seule édition disponible
- ☐ Pages wholly or partially obscured by errata
slips, tissues, etc., have been refilmed to
ensure the best possible image/
Les pages totalement ou partiellement
obscurcies par un feuillet d'errata, une pelure,
etc., ont été filmées à nouveau de façon à
obtenir la meilleure image possible.

This item is filmed at the reduction ratio checked below/
Ce document est filmé au taux de réduction indiqué ci-dessous.

10X	12X	14X	16X	18X	20X	22X	24X	26X	28X	30X	32X
						✓					

The copy filmed here has been reproduced thanks to the generosity of:

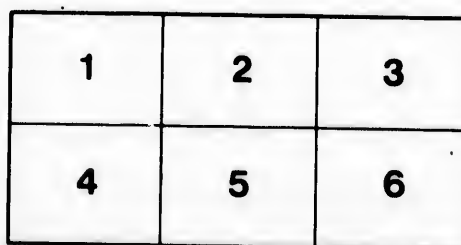
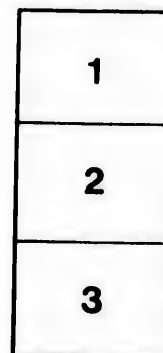
Library Division
Provincial Archives of British Columbia

The images appearing here are the best quality possible considering the condition and legibility of the original copy and in keeping with the filming contract specifications.

Original copies in printed paper covers are filmed beginning with the front cover and ending on the last page with a printed or illustrated impression, or the back cover when appropriate. All other original copies are filmed beginning on the first page with a printed or illustrated impression, and ending on the last page with a printed or illustrated impression.

The last recorded frame on each microfiche shall contain the symbol ➡ (meaning "CONTINUED"), or the symbol ▼ (meaning "END"), whichever applies.

Maps, plates, charts, etc., may be filmed at different reduction ratios. Those too large to be entirely included in one exposure are filmed beginning in the upper left hand corner, left to right and top to bottom, as many frames as required. The following diagrams illustrate the method:



L'exemplaire filmé fut reproduit grâce à la générosité de:

Library Division
Provincial Archives of British Columbia

Les images suivantes ont été reproduites avec le plus grand soin, compte tenu de la condition et de la netteté de l'exemplaire filmé, et en conformité avec les conditions du contrat de filmage.

Les exemplaires originaux dont la couverture en papier est imprimée sont filmés en commençant par le premier plat et en terminant soit par la dernière page qui comporte une empreinte d'impression ou d'illustration, soit par le second plat, selon le cas. Tous les autres exemplaires originaux sont filmés en commençant par la première page qui comporte une empreinte d'impression ou d'illustration et en terminant par la dernière page qui comporte une telle empreinte.

Un des symboles suivants apparaîtra sur la dernière image de chaque microfiche, selon le cas: le symbole ➡ signifie "A SUIVRE", le symbole ▼ signifie "FIN".

Les cartes, planches, tableaux, etc., peuvent être filmés à des taux de réduction différents. Lorsque le document est trop grand pour être reproduit en un seul cliché, il est filmé à partir de l'angle supérieur gauche, de gauche à droite, et de haut en bas, en prenant le nombre d'images nécessaire. Les diagrammes suivants illustrent la méthode.

A

Y
X
Non
cert
exa

supp
exp
selv
in E

earn
time
effor
do s



A "CHURCH FARM"

IN

ASSINIBOIA,
NORTH-WEST CANADA.

"LABORARE EST ORARE."

IF the Ministrations of the Church are to be brought within the reach of the vast scattered population now growing up in the North-West of Canada, in anything like an adequate measure, it is certain that it must be done by a nearer approach to the Apostolic example than we are accustomed to.

A continual flow of Subscriptions from England for the support of the Clergy, sufficient to meet the needs, cannot be expected, while it must be some years before the Settlers themselves will be able to support a Parochial system such as we have in England.

If the Clergy themselves cannot *work with their hands*, to earn their own livelihood, as this would take too much of their time that would otherwise be more profitably employed, their efforts must be largely supplemented by those who can and will do so for Christ's sake.

It is certain also that there are many earnestly devoted young men in England who would be willing to give themselves to any work whereby they might aid in the cause of Christ, if only a way was opened for them. For this purpose it is proposed to establish a "CHURCH FARM" in Assiniboia.

The object of the Farm would be as follows :—

1. To give an opportunity of self-support to men who are anxious to receive Holy Orders, but who are unable to find means for their maintenance at a Theological College.

Manual labour and study have been, in former times, profitably combined, and it is believed that the life in the West of Canada, especially during the long winters, offers great facilities for this combination.

2. Men with zeal for God's work, while earning their own livelihood on this Farm, would be also providing, by their labour, a revenue for the Church's work, and thus be in a very true sense "fellow-helpers," and they might also be employed, as opportunity offered, in the surrounding District, in various kinds of Lay-work, on Sundays, and through the winter months.

3. Many persons in England find it difficult to know where to send young men for a certain time before they take up land for themselves in that country. It is believed that many would be very thankful to know of a Farm under Church Superintendence, where young men would be assured all Church privileges. Such training and influence would also, it is hoped, make the men who had been at the Farm real helpers of the Church in the Districts where they might afterwards settle. It would thus be an ever widening work.

The Farm would be managed as follows :—

1. A Clergyman would be at the head, to supervise the men, conduct the religious Services, and train those preparing for Holy Orders.

will
neces
to y
£2
ther
Don
with

(the
inte

Leed
own
The
gain
pros
at it
is th

2. A good practical Farmer would have the superintendence of the agricultural work as Bailiff.
3. All persons on the Farm would be required to accept a few simple rules of religious life.
4. If in any case travelling expenses are paid from England whether with a view to the persons for whom such expenses are paid preparing for Holy Orders, or to their becoming Lay Workers, a three years' service, at least, will be expected. The money paid will in every case be in the form of a loan, repayment of which will be required if the conditions are not fulfilled.

The expense of commencing this Farm, which it is believed will be of the greatest value for the Church in this Province, will necessarily be considerable, but money thus invested will be sure to yield a good permanent interest for the work of the Church. £2,000 would enable the work to be commenced. This sum is, therefore, earnestly asked for. If the sum cannot be raised by Donations, perhaps some Church people may be willing to help with LOANS.

Offers of Donations towards this special work, or of Loans (the Loans must be in sums of not less than £100, and will bear interest at 4 per cent.), will be thankfully received by me,

ADELBERT ANSON,

Bishop of Assiniboia.

P.S.—Since the above scheme has been formulated, two young men from Leeds (one with some experience of farming), have voluntarily set forth, at their own expense and risk, to gain the experience of a summer's work in Assiniboia. They have done this in the hope of being able to assist, with the experience thus gained, in the starting of the Farm. Already, therefore, there seems good prospect of the Farm being furnished with workers. The work is being blessed at its commencement by this real act of self-devotion, and a great encouragement is thus given to carry out this important experiment.

MARCH, 1885.—Between £500 and £600 have been contributed to the Farm Fund up to the above date. The Bishop has secured 640 acres of land in a most favourable situation, close to the Town of Qu'Appelle. The Council regard the Church Farm as a very important part of the mission scheme, and trust that the Fund will now soon begin to grow. A gentleman has very kindly expressed his willingness to lend £100, on easy terms of repayment, provided that 19 more persons could be found to do the same.

The Secretary, Rev. J. S. HOLDEN, Aston Rectory, Derby, or Mrs. A. ANSON, 13, Cavendish Square, W., will thankfully receive any offers or subscriptions.

tributed
secured
Town
a very
and will
pressed
provided

by, or
receive

