

**CIHM
Microfiche
Series
(Monographs)**

**ICMH
Collection de
microfiches
(monographies)**



Canadian Institute for Historical Microreproductions / Institut canadien de microreproductions historiques

© 1998

Technical and Bibliographic Notes / Notes techniques et bibliographiques

The Institute has attempted to obtain the best original copy available for filming. Features of this copy which may be bibliographically unique, which may alter any of the images in the reproduction, or which may significantly change the usual method of filming are checked below.

- Coloured covers / Couverture de couleur
- Covers damaged / Couverture endommagée
- Covers restored and/or laminated / Couverture restaurée et/ou pelliculée
- Cover title missing / Le titre de couverture manque
- Coloured maps / Cartes géographiques en couleur
- Coloured ink (i.e. other than blue or black) / Encre de couleur (i.e. autre que bleue ou noire)
- Coloured plates and/or illustrations / Planches et/ou illustrations en couleur
- Bound with other material / Relié avec d'autres documents
- Only edition available / Seule édition disponible
- Tight binding may cause shadows or distortion along interior margin / La reliure serrée peut causer de l'ombre ou de la distorsion le long de la marge intérieure.
- Blank leaves added during restorations may appear within the text. Whenever possible, these have been omitted from filming / Il se peut que certaines pages blanches ajoutées lors d'une restauration apparaissent dans le texte, mais, lorsque cela était possible, ces pages n'ont pas été filmées.
- Additional comments / Commentaires supplémentaires:

L'Institut a microfilmé le meilleur exemplaire qu'il lui a été possible de se procurer. Les détails de cet exemplaire qui sont peut-être uniques du point de vue bibliographique, qui peuvent modifier une image reproduite, ou qui peuvent exiger une modification dans la méthode normale de filmage sont indiqués ci-dessous.

- Coloured pages / Pages de couleur
- Pages damaged / Pages endommagées
- Pages restored and/or laminated / Pages restaurées et/ou pelliculées
- Pages discoloured, stained or foxed / Pages décolorées, tachetées ou piquées
- Pages detached / Pages détachées
- Showthrough / Transparence
- Quality of print varies / Qualité inégale de l'impression
- Includes supplementary material / Comprend du matériel supplémentaire
- Pages wholly or partially obscured by errata slips, tissues, etc., have been refilmed to ensure the best possible image / Les pages totalement ou partiellement obscurcies par un feuillet d'errata, une pelure, etc., ont été filmées à nouveau de façon à obtenir la meilleure image possible.
- Opposing pages with varying colouration or discolourations are filmed twice to ensure the best possible image / Les pages s'opposant ayant des colorations variables ou des décolorations sont filmées deux fois afin d'obtenir la meilleure image possible.

This item is filmed at the reduction ratio checked below /
Ce document est filmé au taux de réduction indiqué ci-dessous.

	10x		14x		18x		22x		26x		30x	
									✓			
	12x		16x		20x		24x		28x		32x	

The copy filmed here has been reproduced thanks to the generosity of:

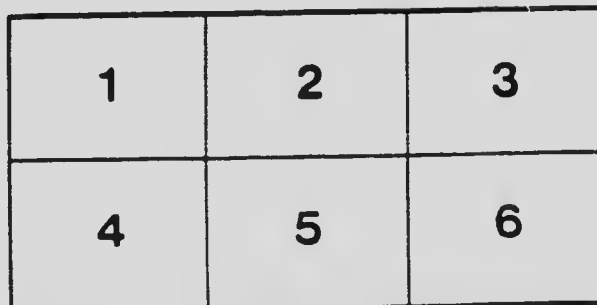
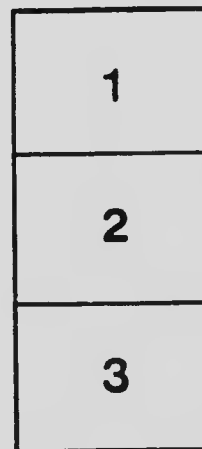
National Gallery of Canada,
Library

The images appearing here are the best quality possible considering the condition and legibility of the original copy and in keeping with the filming contract specifications.

Original copies in printed paper covers are filmed beginning with the front cover and ending on the last page with a printed or illustrated impression, or the back cover when appropriate. All other original copies are filmed beginning on the first page with a printed or illustrated impression, and ending on the last page with a printed or illustrated impression.

The last recorded frame on each microfiche shall contain the symbol \rightarrow (meaning "CONTINUED"), or the symbol ∇ (meaning "END"), whichever applies.

Maps, plates, charts, etc., may be filmed at different reduction ratios. Those too large to be entirely included in one exposure are filmed beginning in the upper left hand corner, left to right and top to bottom, as many frames as required. The following diagrams illustrate the method:



L'exemplaire filmé fut reproduit grâce à la générosité de:

Musée des Beaux-Arts du Canada,
Bibliothèque

Les images suivantes ont été reproduites avec le plus grand soin, compte tenu de la condition et de la netteté de l'exemplaire filmé, et en conformité avec les conditions du contrat de filmage.

Les exemplaires originaux dont le couverture en papier est imprimée sont filmés en commençant par le premier plat et en terminant soit par la dernière page qui comporte une empreinte d'impression ou d'illustration, soit par le second plat, selon le cas. Tous les autres exemplaires originaux sont filmés en commençant par la première page qui comporte une empreinte d'impression ou d'illustration et en terminant par la dernière page qui comporte une telle empreinte.

Un des symboles suivants apparaître sur le dernière image de chaque microfiche, selon le cas: le symbole \rightarrow signifie "A SUIVRE", le symbole ∇ signifie "FIN".

Les cartes, planches, tableaux, etc., peuvent être filmés à des taux de réduction différents. Lorsque le document est trop grand pour être reproduit en un seul cliché, il est filmé à partir de l'angle supérieur gauche, de gauche à droite, et de haut en bas, en prenant le nombre d'images nécessaire. Les diagrammes suivants illustrent le méthode.

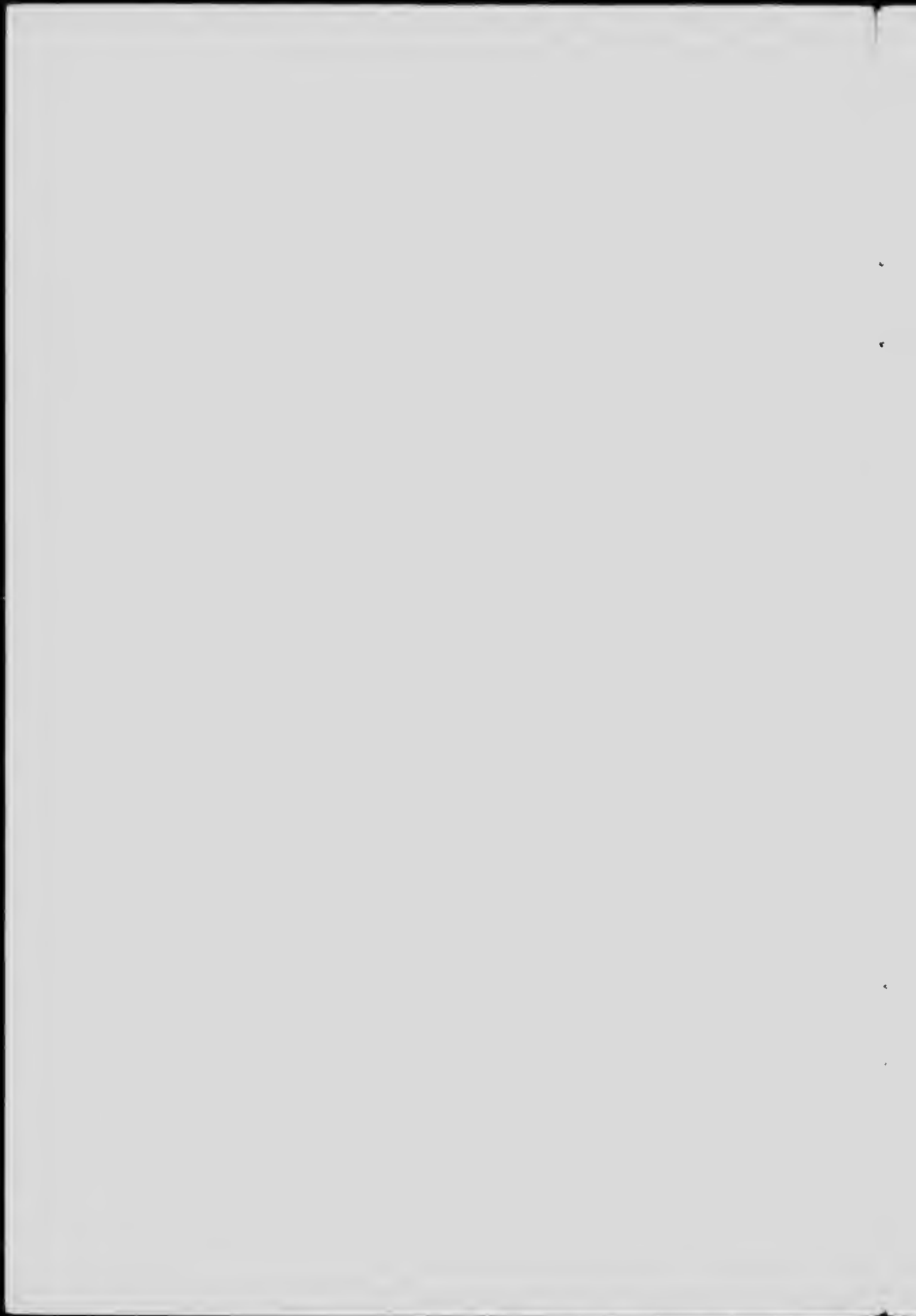
SCHOOLS

ILLUSTRATING RECENT SCHOOL
BUILDINGS ERECTED IN
WESTERN CANADA



STOREY *and* VAN EGMOND
REGISTERED ARCHITECTS

1013-14 McCallum-Hill Building, Regina, Sask., Canada.



The Selection of School Plans.



THE SELECTION of plans for school buildings is a vital matter and deserves very careful consideration. *A school building, above all others, should be designed by experts to provide for the safety and health of the pupils who are to spend so much time within its walls.*

The accompanying plans are published in the hope that they will be of assistance to school boards in the solution of this very important problem, and will enable them to arrive at the plan best suited to their requirements in the most economical and practical manner.

On the plans depend the finished building, and unless the plans have been carefully prepared by competent, qualified architects, and are complete in every way, an inferior building, lacking the essentials of an efficient school, will be the result.

Moreover, it is not only advisable but it is necessary in this Province to retain architects, *as only duly qualified and registered architects are permitted by law to sell plans for buildings.* And the advantage to be gained by having such plans and the benefit of expert opinion and advice, is worth many times the small fee charged.

The first essential, therefore, if school boards are to faithfully fulfil the duties entrusted to them, is to retain competent, registered architects who have had an extensive experience in school building. This not only applies to large buildings but is just as necessary for small one room rural schools where it is essential to have good construction and proper provision for the safety and health of the pupils.

As a guide to school boards in selecting plans a few of the main features of every first-class school are enumerated below.

Construction must be *strong and substantial* and still not extravagant, in order to provide for the safety of the pupils at the minimum cost.

Class rooms must be of *standard* size and proportion to give the *required cubic air space to each pupil* and blackboards, etc., must be placed in accordance with standard practice.

Cloak rooms must be placed in proper relation to the class room and should be well lighted and ventilated.

The lighting of class rooms must be carefully designed so that the *standard* amount of glass area is provided in proportion to the room and in *the right location in relation to the direction the pupils are to face.*

An efficient heating system must be provided and carefully designed on practical lines to heat the building uniformly in the coldest weather, and in doing this care should be taken to secure competitive prices in order that the cost will not be excessive. *No one particular system is decided on to the exclusion of competitive systems, an exorbitant cost will probably be the result.*

A positive ventilation system must be provided to supply an *abundance of fresh air* at all times. Many of the so called ventilation systems are useless.

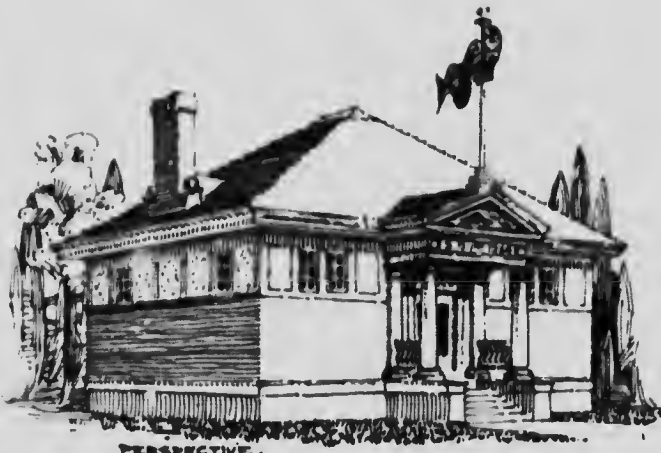
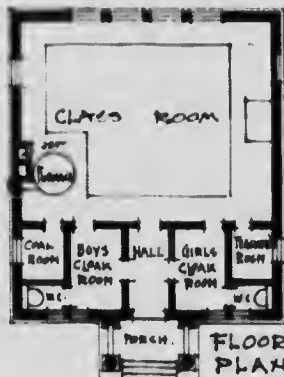
Proper sanitary arrangements are advisable and it is absolutely necessary that these be not installed in any haphazard fashion.

The exterior should be pleasing and of good design and be an object lesson in art to the pupils and the public generally. This does not mean extravagant ornamentation or any additional expense, but only requires *expert design in accordance with approved architectural practice.*

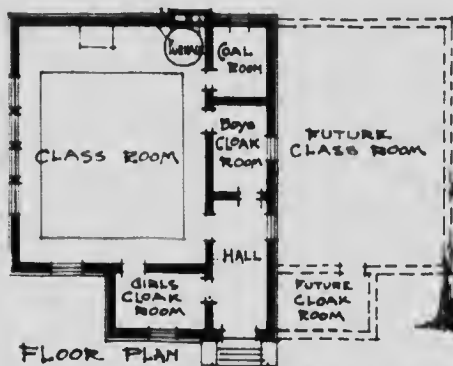
There are many other features necessary to the first-class efficient school but space prohibits going into these at greater length. Sufficient to say that, *if plans are secured from competent registered architects, all details of construction and arrangement will be correct - provided for.*

The accompanying plans have been carefully selected from some fifty school buildings erected in Western Canada from the plans of *Stoen and Van Eemond*, Architects of Regina, Saskatchewan who have made a specialty of school architecture. The arrangements shown are therefore *not experiments* but have been thoroughly tested by actual use and experience.

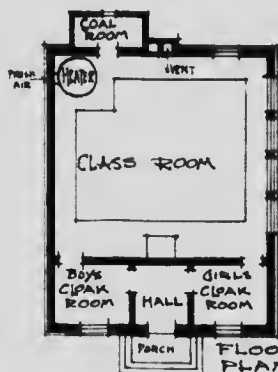
Further information or advice in reference to schools, costs of buildings illustrated herewith and scale of charges for plans, specifications, etc. will be furnished on request by *Stoen and Van Eemond*, Architects, whose address is Suites 1013-14 McCallum-Hill Building, Regina, Saskatchewan.



ECONOMICAL ONE-ROOM SCHOOL - FILE NO. 183



ONE-ROOM SCHOOL FOR A FUTURE EXTENSION - FILE NO. 182



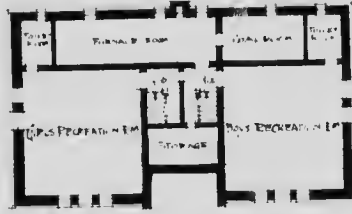
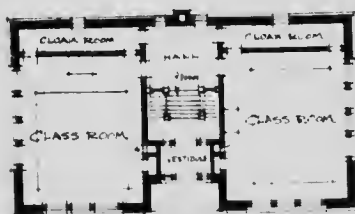
MINIMUM-COST ONE-ROOM SCHOOL - FILE NO. 181

STOREY AND VAN EGMOND, ARCHITECTS, REGINA, CANADA.

The above plans have been selected from a large number of one room schools, in each case the essential features of a modern efficient school being provided. File 181 shows an ideal arrangement for a school at the minimum cost and file 183 also provides a very economical and practical plan. When there is a possibility of future extension, file 182 gives a very successful plan. When finances will not permit of a basement these schools may be heated by the one room heater system, a very efficient heating and ventilating system only costing about \$75.00.



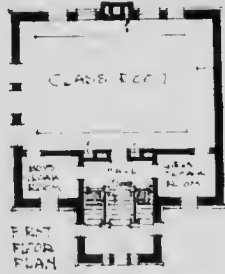
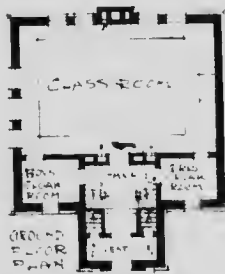
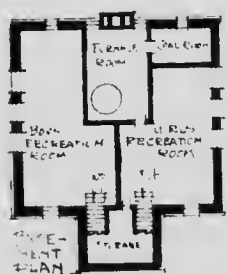
STONEY & VAN GALAND ARCHITECTS
MILWAUKEE, WISCONSIN



MAIN FLOOR PLAN
BASEMENT PLAN
ONE-STOREY TWO-ROOM SCHOOL FILE NO 325

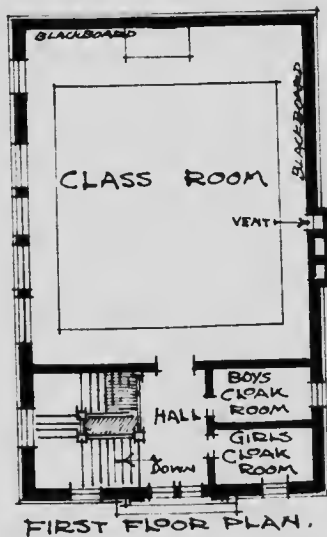
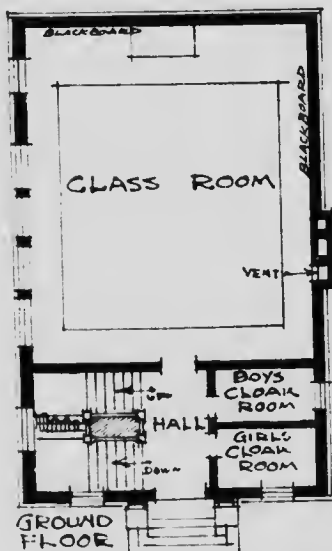
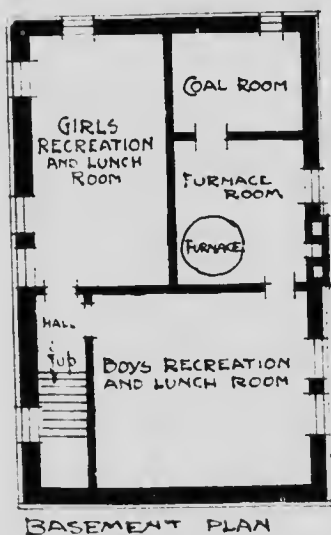
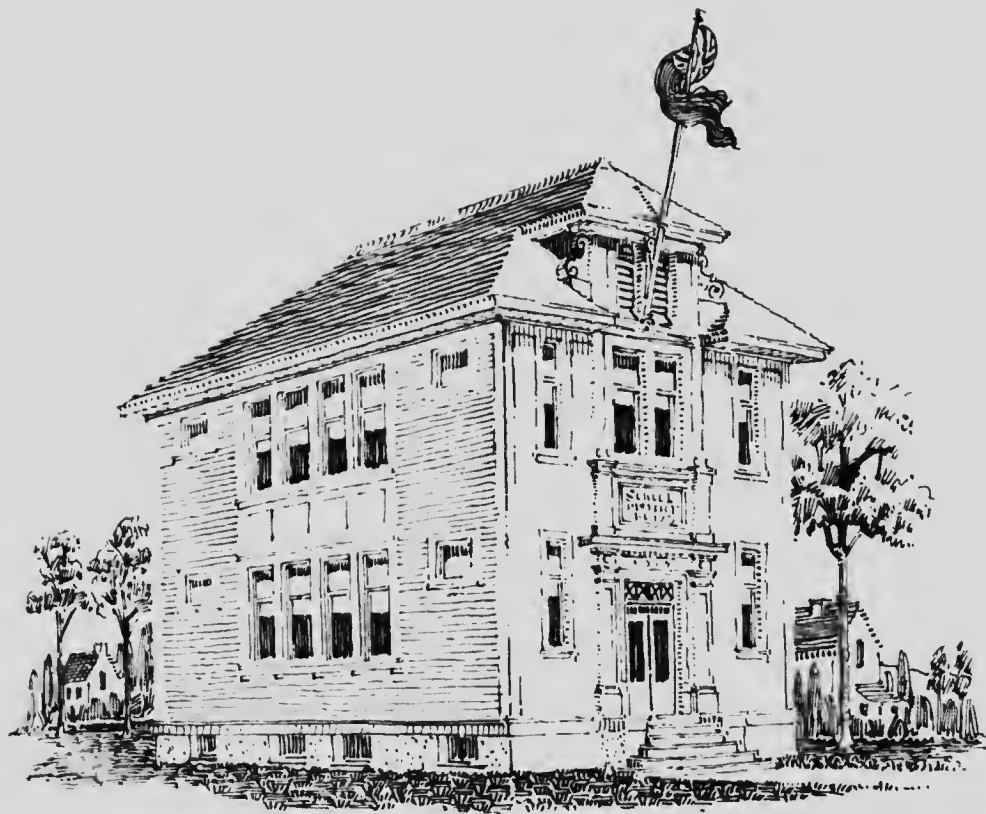


STONEY & VAN GALAND ARCHITECTS
MILWAUKEE, WISCONSIN



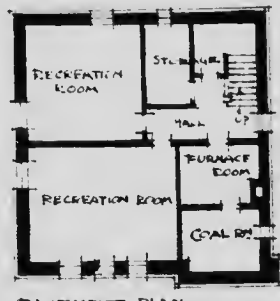
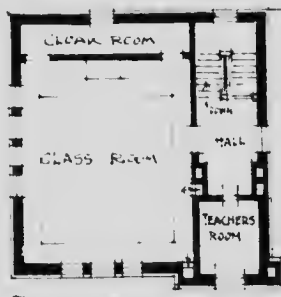
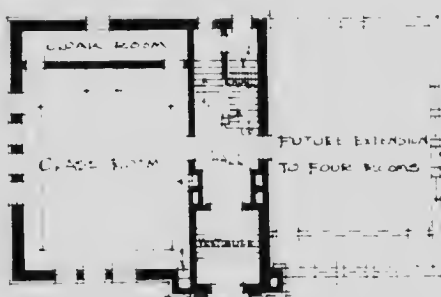
BASEMENT PLAN
SECOND FLOOR PLAN
FIRST FLOOR PLAN
TWO-STOREY TWO-ROOM SCHOOL FILE NO 326

File 325 is for a two room school with both class rooms on one floor. The main advantages of this plan are, the safety in case of fire, no stairs for children to climb, and extra large recreation and lunch rooms in basement. This plan can be used without basement at a very low cost. File 326 is for a two storey two room building laid out along the most approved lines with separate cloak rooms and basement stairs for boys and girls.



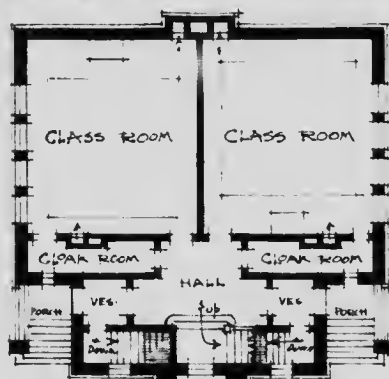
MINIMUM COST TWO ROOM SCHOOL. FILE NO. 282
STOPEY AND VAN EGMOND, ARCHITECTS, REGINA, CAN.

This plan has been used very successfully where it is necessary to obtain a first-class two room school at the minimum cost. Class rooms are of standard size and properly lighted and ventilated. Separate cloak rooms and separate recreation rooms for boys and girls. This plan is very compact, every foot of space being used to advantage.

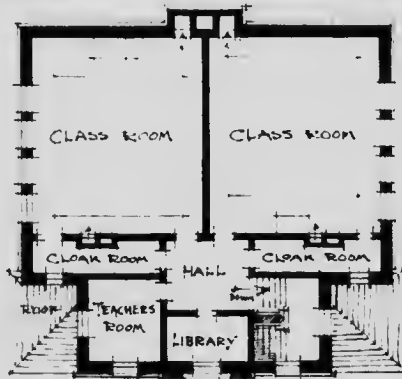


TWO ROOM SCHOOL FOR FUTURE EXTENSION FILE NO 323

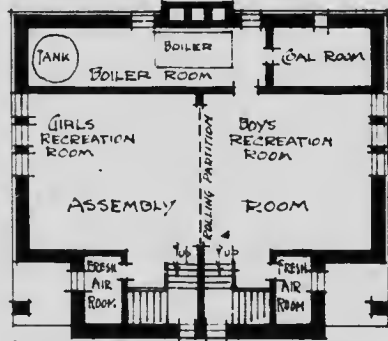
This is a favorite plan for a two room school where it may be necessary to increase the capacity in the future, which as shown can be done very economically and without interfering with existing building. This plan has probably been adopted in more instances than any other plan illustrated herewith and has given exceptional satisfaction. Although a flat roof is shown a sloping roof has been used in many cases. The class rooms, cloak rooms, etc. are of standard size and proportion, and well lighted and ventilated. The hall and stairs are commodious and ample for a four room school. The teacher's room is a decided advantage in this plan.



GROUND FLOOR PLAN



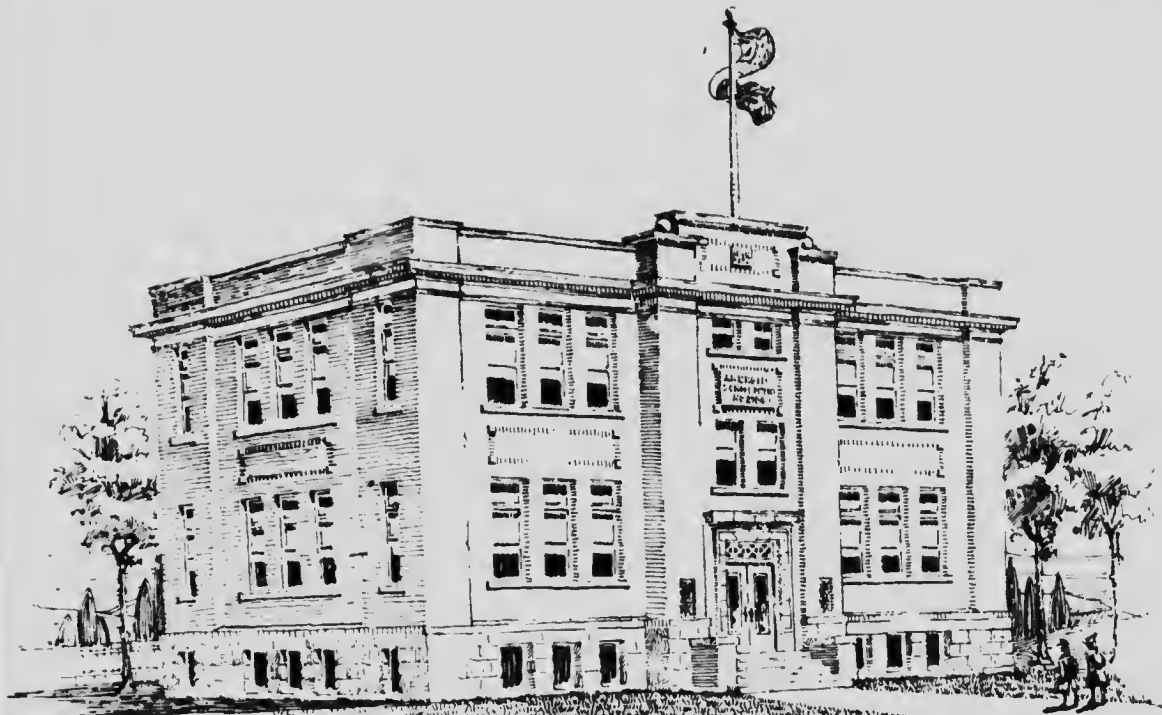
FIRST FLOOR PLAN



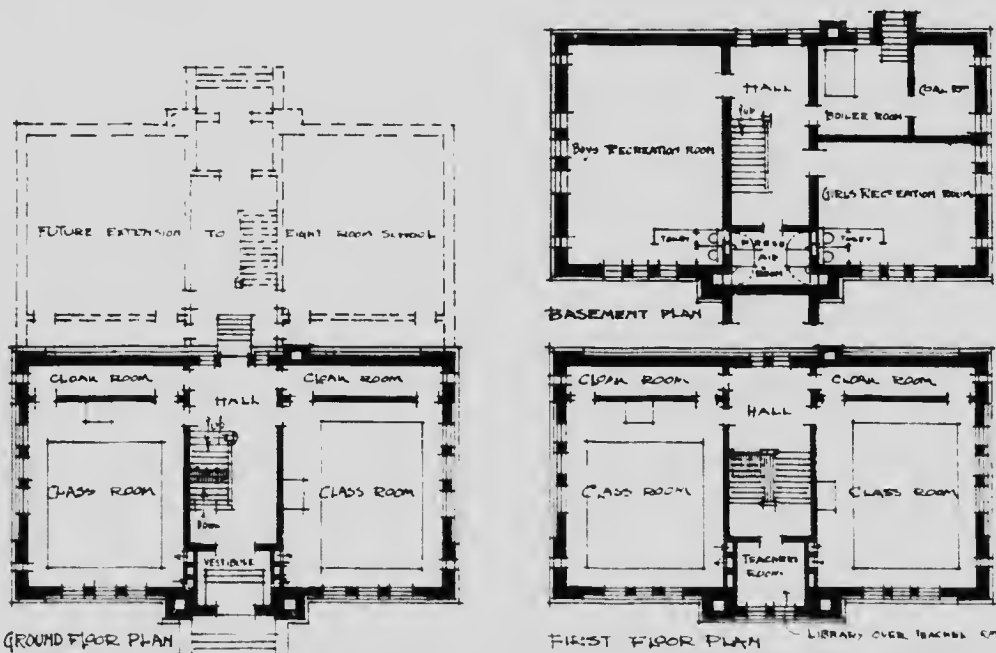
BASEMENT PLAN

FOUR ROOM SCHOOL
 WITH CONVERTIBLE BASEMENT
 FILE NO. 177
 STOREY & VAN EGMOND
 ARCHITECTS REGINA CAN.

The main feature of this plan is that separate entrances are provided for boys and girls. Class rooms and cloak rooms are standard and well lighted and an efficient heating and ventilating system is provided. In addition to teacher's room a library is provided. In the basement are separate recreation rooms for boys and girls which may be combined into a large hall by opening the rolling partition.



STOREY & VAN EGMOND,
ARCHITECTS.
REGINA, SASK.



FOUR ROOM SCHOOL FILE NO. 318

This is an exceptionally popular plan and has been adopted very extensively throughout Western Canada with marked success. All rooms, corridors, etc. are commodious and well lighted, the large, easy stairway being a desirable feature. A teacher's room is provided on stair landing and above this is an additional room for a library.

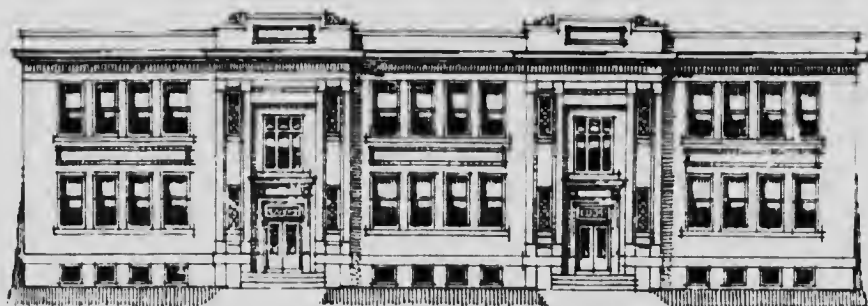


STORRY & VAN ALBEMOND
ARCHITECTS
REGINA, SASK'N



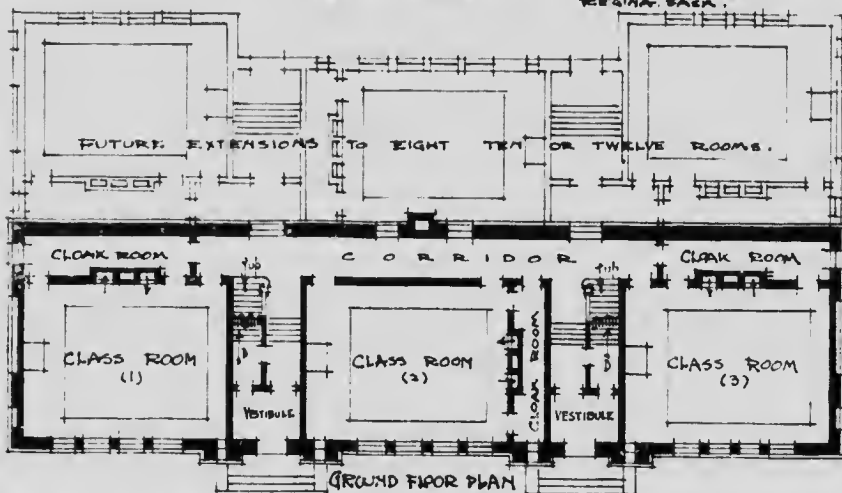
FOUR ROOM SCHOOL FILE NO. 320

This is a plan that has been adopted where more money is available than required for the preceding plan and provides an admirable arrangement which can readily be extended to a six or eight room school at any time. The advantages of this plan are the large commodious hall and easy stairway and separate entrances for boys and girls, thus preventing congestion and overcrowding. On the landing are two teacher's rooms and if desired a large library can be provided above these. The most modern ideas in regard to construction, lighting, heating and ventilation, have been adopted in this plan. An alternative elevation for a sloping roof is shown elsewhere.

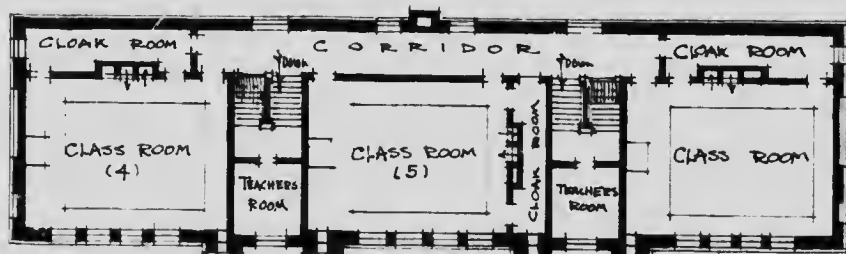


FRONT ELEVATION

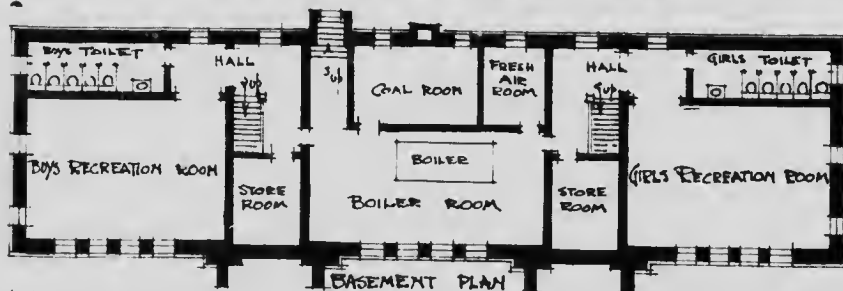
STOREY & VAN EDMOND
ARCHITECTS
REGINA, SASK.



GROUND FLOOR PLAN



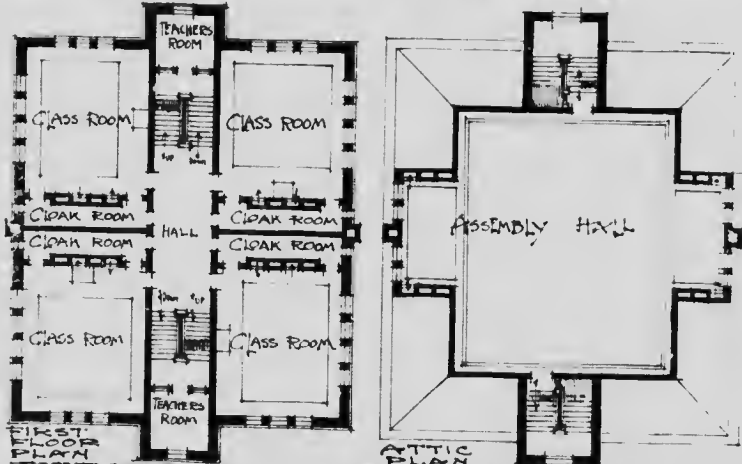
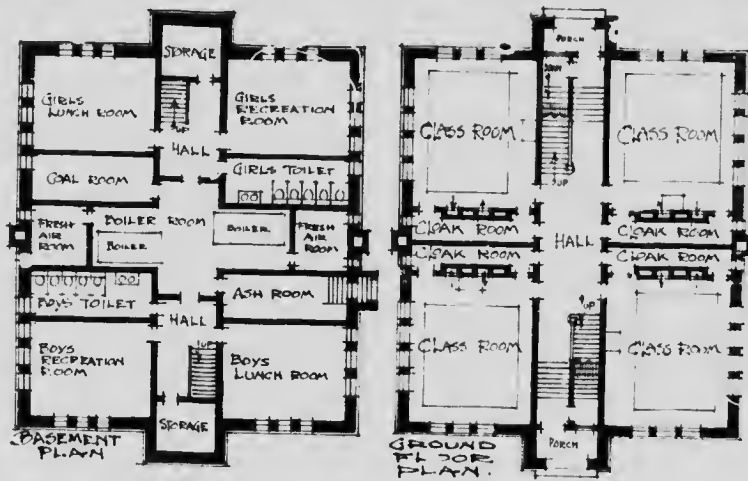
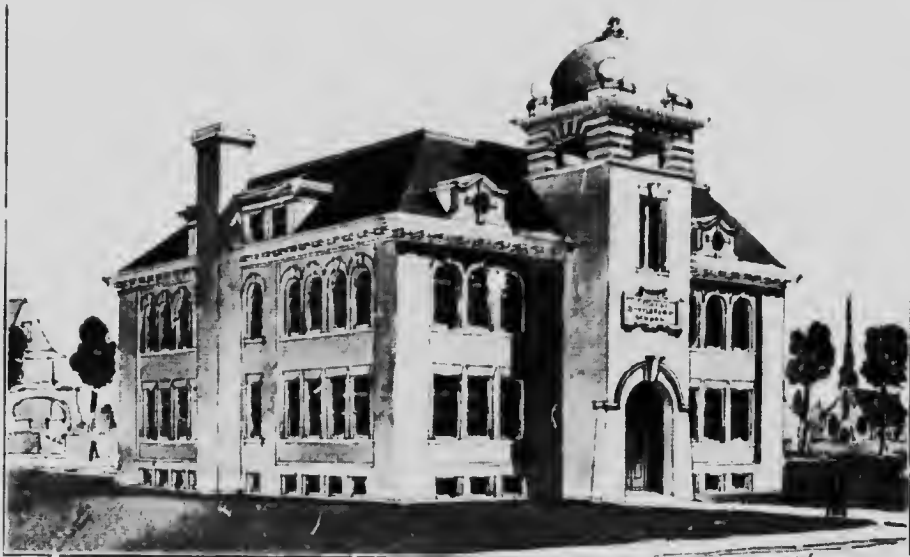
FIRST FLOOR PLAN.



BASEMENT PLAN

SIX ROOM SCHOOL FILE NO. 322

This plan shows a development from a two room to twelve room school. By a careful study of the plans it will be noted that either two rooms, four rooms, six rooms, eight rooms, ten rooms or twelve rooms may be built at any one time and any unit added as desired. Where extension is anticipated this plan deserves particular consideration.



EIGHT ROOM SCHOOL WITH ASSEMBLY HALL FILE NO 1411
 T. STOREY & VAN EGMOND, ARCHITECTS, REGINA, CANADA.

This is a standard plan for a first-class, modern, compact and efficient eight room school with assembly hall and has been adopted in several cases with exceptional satisfaction.

SASKATOON COLLEGIATE
STOREY & VAN EGMOND
ARCHITECTS
SASKATOON & REGINA



COLLEGIATE INSTITUTE, SASKATOON

This plan was selected in open competition from many plans submitted. The building cost \$100,000.00;



COLLEGIATE INSTITUTE, REGINA

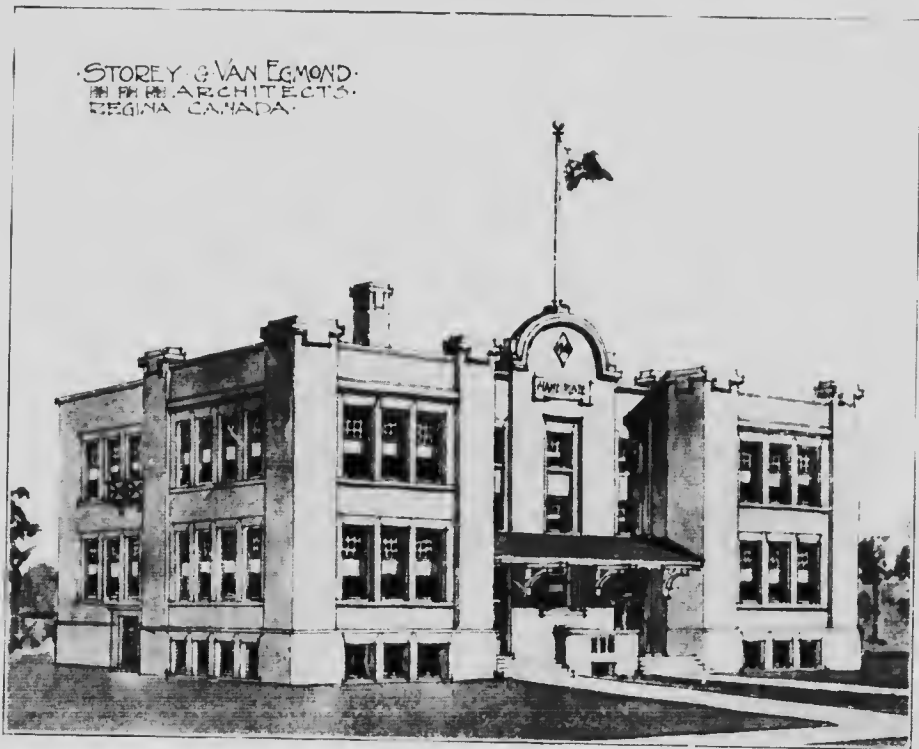
The original plans for this building were also selected in open competition. Recently Storey and Van Egmond were retained again for an addition which increased the accommodation to 22 class rooms, assembly hall, gymnasium, etc. at a total cost of \$200,000.00.

STOREY & VAN EGMOND
ARCHITECTS
REGINA, CANADA



ALBERT SCHOOL, REGINA

STOREY & VAN EGMOND
ARCHITECTS
REGINA, CANADA

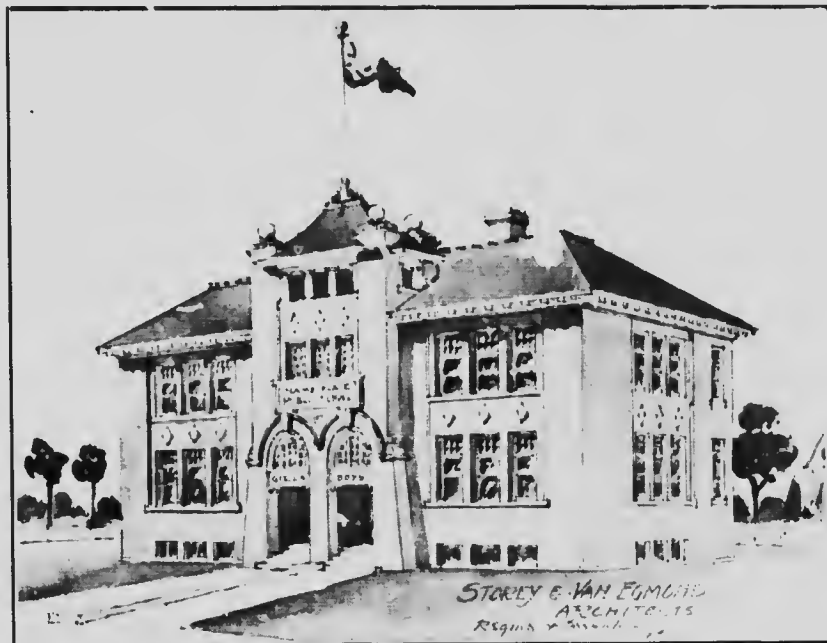


EARL GREY SCHOOL, REGINA



STRATHCONA PUBLIC SCHOOL, REGINA

This is one of three Public Schools in Regina erected from the plans of Storey and Van Egmond, Architects



FOUR ROOM SCHOOL

This illustrates an alternative exterior that has been successfully adopted for floor plans similar to File 320

Further information in reference to any plans illustrated herein will be furnished on request by
Storey and Van Egmond, Architects, Regina, Saskatchewan.

