

**CIHM
Microfiche
Series
(Monographs)**

**ICMH
Collection de
microfiches
(monographies)**



Canadian Institute for Historical Microreproductions / Institut canadien de microreproductions historiques

© 1997

Technical and Bibliographic Notes / Notes techniques et bibliographiques

The Institute has attempted to obtain the best original copy available for filming. Features of this copy which may be bibliographically unique, which may alter any of the images in the reproduction, or which may significantly change the usual method of filming are checked below.

- Coloured covers / Couverture de couleur
- Covers damaged / Couverture endommagée
- Covers restored and/or laminated / Couverture restaurée et/ou pelliculée
- Cover title missing / Le titre de couverture manque
- Coloured maps / Cartes géographiques en couleur
- Coloured ink (i.e. other than blue or black) / Encre de couleur (i.e. autre que bleue ou noire)
- Coloured plates and/or illustrations / Planches et/ou illustrations en couleur
- Bound with other material / Relié avec d'autres documents
- Only edition available / Seule édition disponible
- Tight binding may cause shadows or distortion along interior margin / La reliure serrée peut causer de l'ombre ou de la distorsion le long de la marge intérieure.
- Blank leaves added during restorations may appear within the text. Whenever possible, these have been omitted from filming / Il se peut que certaines pages blanches ajoutées lors d'une restauration apparaissent dans le texte, mais, lorsque cela était possible, ces pages n'ont pas été filmées.
- Additional comments / Commentaires supplémentaires:

L'institut a microfilmé le meilleur exemplaire qu'il lui a été possible de se procurer. Les détails de cet exemplaire qui sont peut-être uniques du point de vue bibliographique, qui peuvent modifier une image reproduite, ou qui peuvent exiger une modification dans la méthode normale de filmage sont indiqués ci-dessous.

- Coloured pages / Pages de couleur
- Pages damaged / Pages endommagées
- Pages restored and/or laminated / Pages restaurées et/ou pelliculées
- Pages discoloured, stained or foxed / Pages décolorées, tachetées ou piquées
- Pages detached / Pages détachées
- Showthrough / Transparence
- Quality of print varies / Qualité inégale de l'impression
- Includes supplementary material / Comprend du matériel supplémentaire
- Pages wholly or partially obscured by errata slips, tissues, etc., have been refilmed to ensure the best possible image / Les pages totalement ou partiellement obscurcies par un feuillet d'errata, une pelure, etc., ont été filmées à nouveau de façon à obtenir la meilleure image possible.
- Opposing pages with varying colouration or discolourations are filmed twice to ensure the best possible image / Les pages s'opposant ayant des colorations variables ou des décolorations sont filmées deux fois afin d'obtenir la meilleure image possible.

This item is filmed at the reduction ratio checked below /
Ce document est filmé au taux de réduction indiqué ci-dessous.

10x																			
											✓								
	12x		16x		20x		24x		28x		32x								

The copy filmed here has been reproduced thanks to the generosity of:

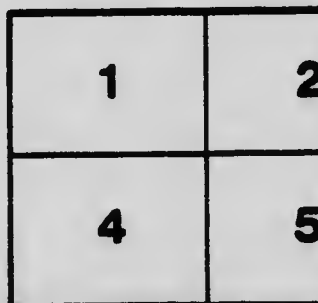
National Library of Canada

The images appearing here are the best quality possible considering the condition and legibility of the original copy and in keeping with the filming contract specifications.

Original copies in printed paper covers are filmed beginning with the front cover and ending on the last page with a printed or illustrated impression, or the back cover when appropriate. All other original copies are filmed beginning on the first page with a printed or illustrated impression, and ending on the last page with a printed or illustrated impression.

The last recorded frame on each microfiche shall contain the symbol \rightarrow (meaning "CONTINUED"), or the symbol ∇ (meaning "END"), whichever applies.

Maps, plates, charts, etc., may be filmed at different reduction ratios. Those too large to be entirely included in one exposure are filmed beginning in the upper left hand corner, left to right and top to bottom, as many frames as required. The following diagrams illustrate the method:



L'exemplaire filmé fut reproduit grâce à la générosité de:

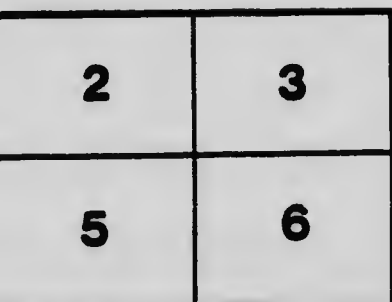
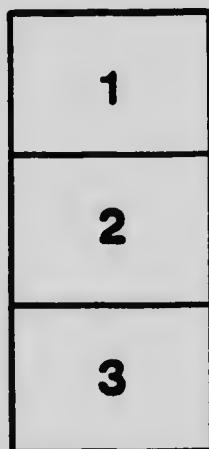
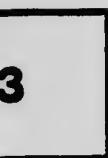
Bibliothèque nationale du Canada

Les images suivantes ont été reproduites avec le plus grand soin, compte tenu de la condition et de la netteté de l'exemplaire filmé, et en conformité avec les conditions du contrat de filmage.

Les exemplaires originaux dont la couverture en papier est imprimée sont filmés en commençant par le premier plat et en terminant soit par la dernière page qui comporte une empreinte d'impression ou d'illustration, soit par le second plat, selon le cas. Tous les autres exemplaires originaux sont filmés en commençant par la première page qui comporte une empreinte d'impression ou d'illustration et en terminant par la dernière page qui comporte une telle empreinte.

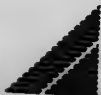
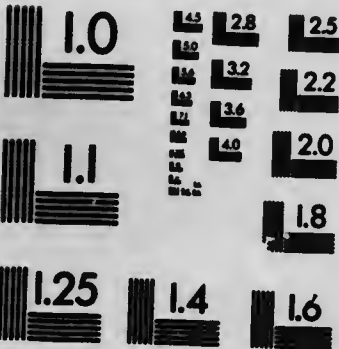
Un des symboles suivants apparaîtra sur la dernière image de chaque microfiche, selon le cas: le symbole \rightarrow signifie "A SUIVRE", le symbole ∇ signifie "FIN".

Les cartes, planches, tableaux, etc., peuvent être filmés à des taux de réduction différents. Lorsque le document est trop grand pour être reproduit en un seul cliché, il est filmé à partir de l'angle supérieur gauche, de gauche à droite, et de haut en bas, en prenant le nombre d'images nécessaire. Les diagrammes suivants illustrent la méthode.



MICROCOPY RESOLUTION TEST CHART

(ANSI and ISO TEST CHART No. 2)



APPLIED IMAGE Inc

1653 East Main Street
Rochester, New York 14609 USA
(716) 482-0300 - Phone
(716) 288-5889 - Fax

P***

SOILING CROPS FOR DAIRY FARMING IN THE EASTERN PROVINCES AND BRITISH COLUMBIA

BY

W. L. GRAHAM, B.S.A.

The summer silo, in districts where labour is scarce and expensive, is the most profitable method of supplementing pastures from the end of June. Where the silo is not used or where green feed is preferred the soiling crop method is recommended. Results at the Dominion Experimental Farms and elsewhere would seem to indicate: alfalfa, vetches, peas, oats, clover and corn as the most suitable crops for the purpose.

Dairy farmers are, therefore, recommended to prepare and feed about as follows for each ten cows in their herd:—

1. Clover, one acre: To have been sown with the mixture of peas and oats the previous year as described below. Feed off June 20 to July 15.

2. Peas and oats, one-half acre: Sow 1 bushel peas, 1½ bushels oats and 5 pounds red clover seed about the first week in May, or earlier if possible. Feed off July 15 to 31.

3. Peas and oats, one-half acre: Sow same mixture on another half acre about third week in May. Feed off August 1 to 15.

4. Corn, one-half acre: Sow 10 pounds Longfellow (or other small variety) in hills 36 inches apart each way, or in drills 42 inches apart. Sow third week in May or as early as possible. Sow on well drained land, clover sod manured at rate of twenty loads (tons) per acre. Feed off August 15 to 30.

5. Corn, one-half acre: Sow 12 pounds Wisconsin No. 7 (or other medium variety) same way as above. Feed off in September.

For the average 100-acre dairy farm the foregoing soiling crops can be readily managed in a three-year rotation and combined with a four-year (main) rotation advantageously. The three-year rotation would thus provide feed for summer and autumn and a small amount of pasture. The four-year rotation area would supply forage for winter and spring, and pasture for spring and summer. The following diagram will indicate what might be the arrangement of the fields and the crops thereon. In the case of a 100-acre farm where in addition to orchards, gardens, etc., about 60 acres could be brought under the plough, fields M1, M2, M3, and M4 would be under the four-year rotation and would be cropped as indicated. Fields S1, S2, and S3 would be under the three-year rotation and would be cropped as indicated.

Explanation of Signs on Diagram.

- A—Dwelling-house.
- B—Shed.
- C—Poultry-house.
- D—Horse stable.
- E—Implement shed.
- F—Cow barn, feed room and silos.
- G—Pig-pens.

DOMINION EXPERIMENTAL FARMS.

J. H. GRIDDALE, B.Agr.,
Director.

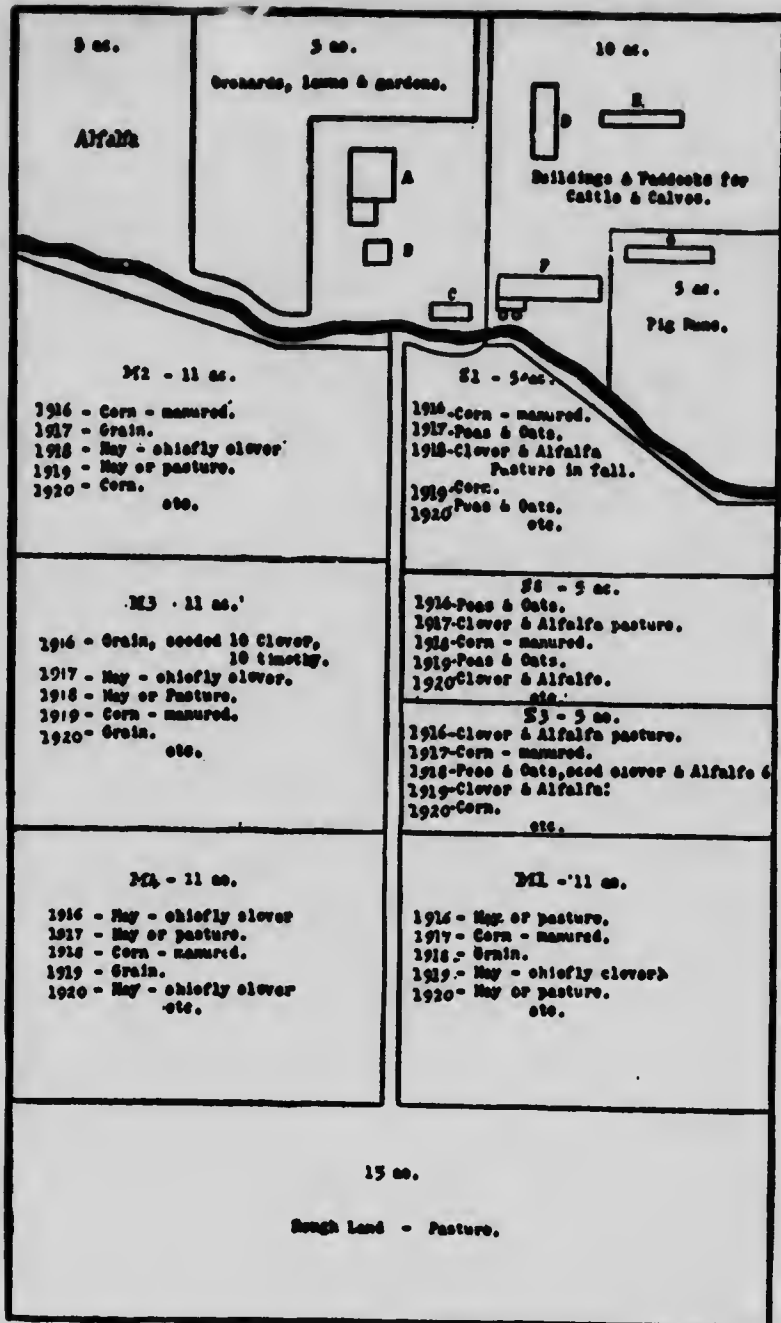
W. L. GRAHAM, B.S.A.,
Asst. Field Husbandman.

EXHIBITION CIRCULAR No. 67.

93382

(January, 1916.)





SUITABLE ARRANGEMENT AND ROTATIONS FOR A 100-ACRE DAIRY FARM.

Published by authority of Hon. MARTIN BURRELL, Minister of Agriculture, Ottawa, Ont.

