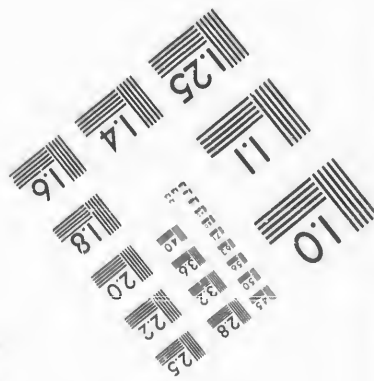
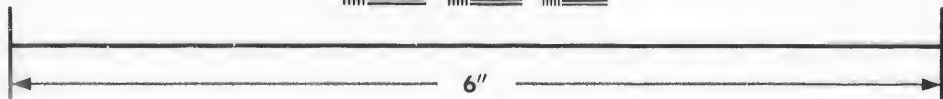
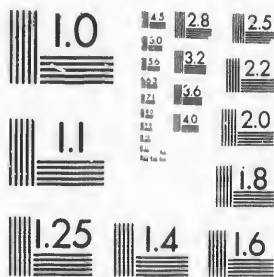


**IMAGE EVALUATION
TEST TARGET (MT-3)**



**Photographic
Sciences
Corporation**

23 WEST MAIN STREET
WEBSTER, N.Y. 14580
(716) 872-4503

28 25
22
20

**CIHM/ICMH
Microfiche
Series.**

**CIHM/ICMH
Collection de
microfiches.**



Canadian Institute for Historical Microreproductions / Institut canadien de microreproductions historiques

01

© 1987

Technical and Bibliographic Notes/Notes techniques et bibliographiques

The Institute has attempted to obtain the best original copy available for filming. Features of this copy which may be bibliographically unique, which may alter any of the images in the reproduction, or which may significantly change the usual method of filming, are checked below.

L'institut a microfilmé le meilleur exemplaire qu'il lui a été possible de se procurer. Les détails de cet exemplaire qui sont peut-être uniques du point de vue bibliographique, qui peuvent modifier une image reproduite, ou qui peuvent exiger une modification dans la méthode normale de filmage sont indiqués ci-dessous.

- Coloured covers/
Couverture de couleur
- Covers damaged/
Couverture endommagée
- Covers restored and/or laminated/
Couverture restaurée et/ou pelliculée
- Cover title missing/
Le titre de couverture manque
- Coloured maps/
Cartes géographiques en couleur
- Coloured ink (i.e. other than blue or black)/
Encre de couleur (i.e. autre que bleue ou noire)
- Coloured plates and/or illustrations/
Planches et/ou illustrations en couleur
- Bound with other material/
Relié avec d'autres documents
- Tight binding may cause shadows or distortion along interior margin/
La reliure serrée peut causer de l'ombre ou de la distorsion le long de la marge intérieure
- Blank leaves added during restoration may appear within the text. Whenever possible, these have been omitted from filming/
Il se peut que certaines pages blanches ajoutées lors d'une restauration apparaissent dans le texte, mais, lorsque cela était possible, ces pages n'ont pas été filmées.
- Additional comments:/
Commentaires supplémentaires:

- Coloured pages/
Pages de couleur
- Pages damaged/
Pages endommagées
- Pages restored and/or laminated/
Pages restaurées et/ou pelliculées
- Pages discoloured, stained or foxed/
Pages décolorées, tachetées ou piquées
- Pages detached/
Pages détachées
- Showthrough/
Transparence
- Quality of print varies/
Qualité inégale de l'impression
- Includes supplementary material/
Comprend du matériel supplémentaire
- Only edition available/
Seule édition disponible
- Pages wholly or partially obscured by errata slips, tissues, etc., have been refilmed to ensure the best possible image/
Les pages totalement ou partiellement obscurcies par un feuillet d'errata, une pelure, etc., ont été filmées à nouveau de façon à obtenir la meilleure image possible.

This item is filmed at the reduction ratio checked below/
Ce document est filmé au taux de réduction indiqué ci-dessous.

10X	12X	14X	16X	18X	20X	22X	24X	26X	28X	30X	32X
						✓					

The copy filmed here has been reproduced thanks to the generosity of:

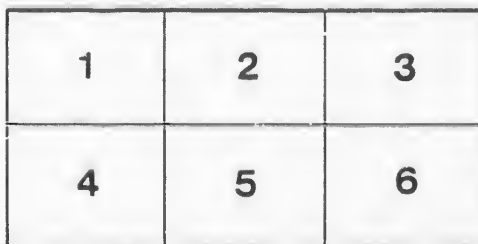
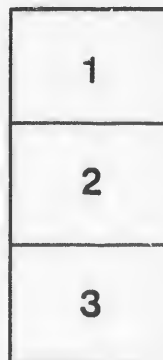
D. B. Weldon Library
University of Western Ontario
(Regional History Room)

The images appearing here are the best quality possible considering the condition and legibility of the original copy and in keeping with the filming contract specifications.

Original copies in printed paper covers are filmed beginning with the front cover and ending on the last page with a printed or illustrated impression, or the back cover when appropriate. All other original copies are filmed beginning on the first page with a printed or illustrated impression, and ending on the last page with a printed or illustrated impression.

The last recorded frame on each microfiche shall contain the symbol \rightarrow (meaning "CONTINUED"), or the symbol ∇ (meaning "END"), whichever applies.

Maps, plates, charts, etc., may be filmed at different reduction ratios. Those too large to be entirely included in one exposure are filmed beginning in the upper left hand corner, left to right and top to bottom, as many frames as required. The following diagrams illustrate the method:



L'exemplaire filmé fut reproduit grâce à la générosité de:

D. B. Weldon Library
University of Western Ontario
(Regional History Room)

Les images suivantes ont été reproduites avec le plus grand soin, compte tenu de la condition et de la netteté de l'exemplaire filmé, et en conformité avec les conditions du contrat de filmage.

Les exemplaires originaux dont la couverture en papier est imprimée sont filmés en commençant par le premier plat et en terminant soit par la dernière page qui comporte une empreinte d'impression ou d'illustration, soit par le second plat, selon le cas. Tous les autres exemplaires originaux sont filmés en commençant par la première page qui comporte une empreinte d'impression ou d'illustration et en terminant par la dernière page qui comporte une telle empreinte.

Un des symboles suivants apparaîtra sur la dernière image de chaque microfiche, selon le cas: le symbole \rightarrow signifie "A SUIVRE", le symbole ∇ signifie "FIN".

Les cartes, planches, tableaux, etc., peuvent être filmés à des taux de réduction différents. Lorsque le document est trop grand pour être reproduit en un seul cliché, il est filmé à partir de l'angle supérieur gauche, de gauche à droite, et de haut en bas, en prenant le nombre d'images nécessaire. Les diagrammes suivants illustrent la méthode.

*For No. 9
for Clerk of the Peace*

VOTERS' LIST

-- For The Village Of --

Lucan

FOR THE YEAR 1889.

The Sheriff shall, immediately upon receipt of his copies, cause one of them to be posted up in a conspicuous place in the Court House. The Clerk of the Peace, upon receipt of his copies, shall cause one of them to be posted up in a conspicuous place in his office. Every Public or Separate School Head Master or Mistress shall, in like manner, post up one of his or her copies on the door of the School House, and every Postmaster shall post up one of his copies in his Post Office.

The Ont. Voters' List Act, 1889; Chap. 3, Sec. 8.

I, G. A. Stanley, Clerk of the Municipality of the Village of LUCAN, in the County of Middlesex, do hereby certify that parts (1 & 3), one and three of the within voters' list for the year 1889, constitute a correct list of all persons appearing by the last revised assessment roll of the said Municipality to be entitled to vote at elections for members of the Legislative Assembly; and that parts (1 & 2), one and two constitute a correct list, for the same year, of all persons appearing by the said roll to be entitled to vote at Municipal elections in the said Municipality; and I also certify that the aggregate number of names of persons on said list who are qualified to serve as Jurors is (75) Seventy-five, and I hereby call upon all electors to examine the said list, and if any omissions or other errors are perceived therein to take immediate proceedings to have the said errors corrected according to law.

Dated at my office, this 15th day of July, 1889.

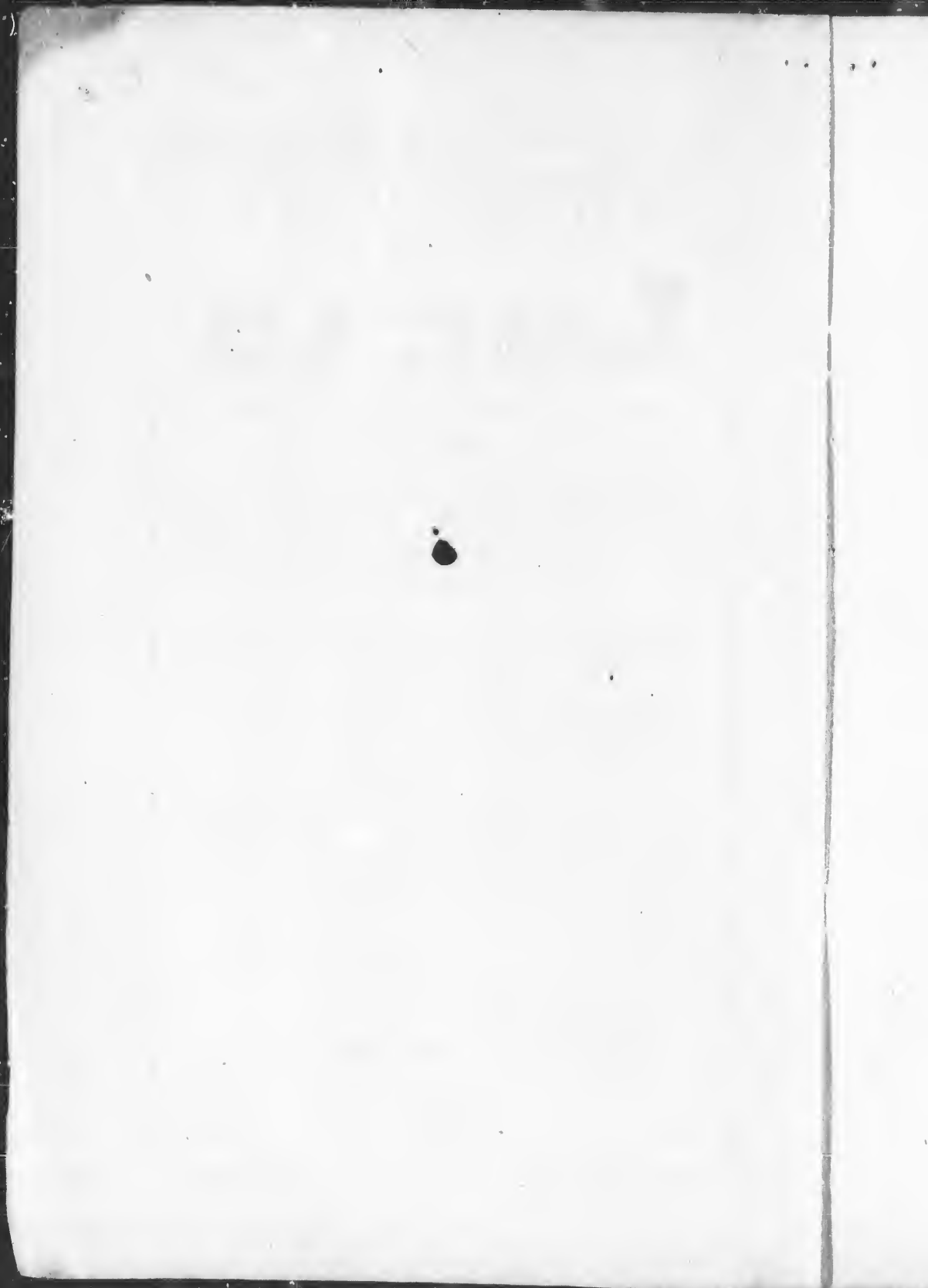
G. A. STANLEY, Clerk of the aforesaid Municipality of Lucan,
LUCAN, P. O.

Enterprise Printing House.

LUCAN, ONTARIO.

*Recd & filed
1889. In office of Clerk Peace*

*Sept 30th
C. Hutchins
Clerk Peace pro etc*



POLLING SUB-DIVISION NO. 1.

PART I—Persons entitled to vote at both Municipal and Legislative Assembly elections

Jurors	No. on roll	Name	Profession	Con. or Street	Lot or pt. of Lot	Class
	28	Armitage J R	.. Agent	Princess st	.. pt 200 & 201 ..	f m f
	39	Armitage J R	.. Merchant	Main st 190 ..	f m f
	69	Atkinson D	.. Farmer	S L R pt farm 4 ..	f m f
	70	Atkinson T	.. Merchant	S L R pt farm 4 ..	f m f
	208	Armitage Jas	Stone-cutter	Wm st 9 ..	h m f
	281	Anderson Jus	wag'n mak'r	Frank st 7 ..	h m f
	48	Bowman Thos M	.. Barrister	Main st 187 ..	h m f
	259	Butler Peter E	.. Drayman	S L R pt lot 5 ..	f m f
	258	Butler P	.. Drayman	S L R pt lot 5 ..	f m f
	54	Brewer A C	.. Miller	Main st e pt 30 ..	f m f
	59	Butler Ephriam	.. Laborer	Main st 58 & 59 ..	t m f
	254	Brampton Wm	.. Laborer	George st 60 ..	f m f
	255	Brand Fred	.. Carpenter	George st pt farm 5 ..	h m f
	284	Bell Joseph	.. Laborer	Water st 52 ..	h m f
	71	Burnett James	.. Farmer	S L R pt farm 4 ..	f m f
	264	Collins J R	.. Tailor	Main st 188 ..	h m f
	1	Casey Thos	.. Laborer	Con 4 12 ..	f m f
	4	Carty Con	.. Laborer	Con 4 pt 11 ..	f m f
	257	Cousins James	.. G T R	S L R	.. G T R station gds	h m f
	245	Caves Robert	.. Carpenter	Water st 40 ..	f m f
	241	Caves Alex	.. Laborer	Water st 45 & 46 ..	f m f
	261	Casey Thos	.. Laborer	Butler st 152 & 153 ..	f m f
	21	Clerke S H	.. Physician	Main st 256 ..	f m f
		Collison Martin	.. Farmer	Princess st 58 ..	f m f
	27	Cubbon Thos	.. Miller	Princess st 202 ..	f m f
	31	Cathcart Geo	.. Shoemaker	Princess st 43 ..	f m f
	44	Collins Robt	.. Tinsmith	Main st 187 ..	h m f
	204	Crouch F	.. G T R	Wm st 2 ..	f m f
	213	Cain John	Hotel-keeper	S L R pt farm 5 ..	f m f
	55	Creighton Thos	Hotel-keeper	Main st w pt 30 ..	f m f
	2	Casey John	.. Laborer	Con 4 lot 12 ..	l o s m f
	3	Casey Patrick	.. Laborer	Con 4 lot 12 ..	o s m f
	250	Donevan Wm	Foundryman	Geo st 72 & 73 ..	f m f
	52	Drought Richard	.. Farmer	Main st w pt 29 ..	f m f
	64	Downie Rev J	.. Clergyman	Main st pt lot 5 ..	h m f
	205	Deacon John	.. Laborer	Wm st 1 ..	f m f
	219	Dight Norris	.. Miller	Wm st w pt 18 ..	f m f
	223	Durham Leonard	.. Laborer	Frank at 21 ..	h m f
	223	Durham Michael	.. Gentleman	Frank st 21 ..	f m f
	228	Dagg John	.. Baker	Frank at 25 ..	f m f
	33	Dann Wm	.. Vet S	Wm st 6 ..	h m f
	59	Dart Thos	.. Butcher	Main st 58 & 59 ..	h m f
	8	Eedy John	.. V Student	Elm st pt 57 ..	o s m f
	58	Ellwood Wm	.. Tailor	Main st 55, 56 & 57 ..	f m f
	29	Edward C B	.. Teacher	Princess st 199 & 200 ..	h m f
	29	Fogarty Patrick	.. Farmer	Princess st	.. pt 199 & 200 ..	f m f
	49	Farrell Johu	.. Druggist	Main st 187 ..	f m f
	62	Fox Robt	.. Solicitor	Wm st w pt 4 ..	f m f

Jurors	No. on roll	Name	Profession	Con. or Street	Lot or pt. of Lot	Class
	10	Gleeson Dennis	.. Laborer	Main st pt 269	.. h m f
	215	Gibson Sylvanus	.. Carpenter	Water st 76 & 77	.. f m f
	211	Gillis Sammel	.. G T R	S L R h m f
	251	Gibson Herbert	.. Carpenter	Geo st pt 71	.. f m f
	10	Gleeson Timothy	.. Gentleman	Main st 269	..
	239	Hodgins Geo. M	.. V Student	Water st 47	.. o s m f
	239	Hodgins Geo	.. Laborer	Water st 47	.. f m f
	13	Haskett Thos	.. Gentleman	Main st 265 & 266	.. f m f
	46	Hodgins Jonathan	.. Liveryman	Main st pt 187	.. f m f
	44	Hodgins Henry	.. Merchant	Main st pt 187	.. f m f
	54	Howe Daniel	.. Laborer	Main st e pt 30	.. h m f
	263	Hutchins Wm	.. Grain buyer	Wm st	.. G T R Grainstore	.. f m f
	55	Hodgins Isaac	.. Hotel keeper	Main st w pt 30	.. h m f
	47	Hawkshaw Thos	.. Miller	Main st 187	.. f m f
	68	Howard Thos	.. Carpenter	Main st pt farm 4	.. f m f
	211	Hodgins J A	.. G T R	S L R pt farm 5	.. f m f
	243	Husband Thos	.. Painter	Water st u pt 80	.. h m f
	220	Hodgins George	.. Farmer	Wm st pt 18	.. f m f
	19	Hutchinson C	.. Carpenter	Main st 259	.. o s m f
	37	Hawkins Wm	.. Baker	Main st 191 & 192	.. h m f
	38	Hawkins Henry	.. Baker	Main st 191 & 192	.. h m f
	252	Hodgins Thos	.. Laborer	George st 66	.. h m f
	207	Judge Wesley	.. Stage driver	Wm st 9	.. <i>h</i> l o s
	262	Judd Isaac	.. Laborer	Butler st 149 & 150	.. h m f
	12	Kitt Thos	.. Merchant	Main st 267	.. f m f
	11	Lusk James	.. Farmer	Main st 268	.. f m f
	11	Mayo James	.. Laborer	Main st 261 & 262	.. f m f
	42	McLean Robt	.. Hotel keeper	Main st 188 & 189	.. f m f
	43	McLean Albert	.. V S	Main st 188 & 189	.. o s m f
	45	MacDiarmid Wm	.. Barrister	Main st 187	.. h m f
	65	Melthargey Dennis	.. Farmer	S L R pt lot 5	.. f m f
	225	McLean Sainuel	.. Laborer	Frank st e pt 23	.. <i>h</i> f
	226	MaGuire David	.. Gentleman	Frank st n pt 23	.. <i>h</i> f
	6	Melson John	.. Wagonmaker	Con 4 e pt 61	.. <i>h</i> f
	41	McCosh Donald	.. Merchant	Main st 185	.. <i>h</i> f
	234	McFalls Alex	.. Farmer	Water st 52	.. f m f
	238	McCombs James	.. Merchant	Water st 48 & 49	.. f m f
	219	Norton Thos	.. Engine driver	Wm st 185	.. <i>h</i> h
	249	Neil Francis	.. Gentleman	George st 74 & 75	.. <i>h</i> h
	24	O'Neil R A	.. Banker	Albert st 64	.. <i>h</i> o s
	17	O'Boyle Wm	.. Gentleman	Ehn st 69	.. f
	209	O'Shea Daniel	.. Laborer	Wm st 10 & 11	.. <i>h</i> f
	23	O'Neil R H	.. Banker	Main st 253	.. <i>h</i> f
	109	O'Neil Daniel	.. Gentleman	Beech st 153	.. f m f
	35	O'Neil F A	.. Banker	Main st pt 191	.. <i>h</i> f
	50	Orme J W	.. Printer	Main st e pt 28	.. <i>h</i> f
	51	Orme Thos	.. Gentleman	Main st w pt 28, e pt 29	.. <i>h</i> f
	214	Patrick Lorene	.. Apple buyer	Wm st pt lot 5	.. f
	265	Porte Fred	.. Clerk	Main st n pt 192	.. <i>h</i> l o s
	34	Porte Wm	.. Postmaster	Main st n pt 192	.. <i>h</i> f
	249	Parker George	.. Cooper	Geo st 74 & 75	.. <i>h</i> f

Jurors	No. on roll	Name	Profession	Con. or Street	Lot or pt. of Lot	Class
	246	Russell Jessej	.. Laborer	Water st 35, 36 ..	<i>m. y</i> f
	248	Robinson Henry	.. Blacksmith	Water st	.. 31, 32, 33 & 34 ..	<i>m. y</i> f
	235	Ryan Francis	.. Laborer	Water st 50 ..	<i>m. y</i> h
j	61	Stanley Albert	.. Grain buyer	Main st pt farm 5 ..	<i>m. y</i> f
	5	Sheridan James	.. Laborer	Con 4 10 ..	<i>m. y</i> f
j	8	Stanley James	.. Agent	Main st 270 ..	<i>m. y</i> f
	14	Scott Adam	.. Gentleman	Main st 263 264 ..	<i>m. y</i> f
j	32	Stanley Wm	.. Agent	Wm st pt 6 ..	<i>m. y</i> f
	30	Stanley Bernard	.. Merchant	Main st pt farm 5 ..	<i>m. y</i> f
	66	Shaw Thomas	.. Gentleman	Main st pt farm 4 ..	<i>m. y</i> f
	67	Shaw Wesley	.. M D Student	Main st pt farm 4 ..	<i>m. y</i> l o s
j	256	Sadlier James	.. G T R	S L R	.. G T R grounds ..	<i>m. y</i> h
	249	Seeli Robert	.. Lumberman	Water st 43 ..	<i>f m f</i>
	200	Sproat James	.. Baker	Wm st e pt 5 ..	<i>f</i>
j	201	Shaver Wm	.. Merchant	Wm st w pt 5 ..	<i>m. y</i> f
	230	Sprout Wm	.. Blacksmith	Frank st 6 ..	<i>h m f</i>
	217	Stewartson James	.. Laborer	Wm st 16 ..	<i>m. y</i> f
	216	Stewartson Jas	.. Laborer	Wm st 16 ..	<i>m. y</i> l o s
	221	Seeli James	.. Laborer	Frank st 19 ..	<i>m. y</i> f
j	232	Sprout Charles	.. Wagonmaker	Frank st 20 ..	<i>m. y</i> f
	227	Simpson Joseph	.. Laborer	Frank st 24 ..	<i>m. y</i> f
	255	Stanley Thos	.. Gentleman	Water st 51 ..	<i>f m f</i>
	22	Stewartson John	.. Pumpmaker	Main st 254 ..	<i>m. y</i> h
	53	Sheardwn John	.. Blacksmith	Main st n pt 29 ..	<i>h m f</i>
	16	Trevitick Samuel	.. Gentleman	Main st 60 ..	<i>f</i>
j	20	Tennant Ezek	.. V S	Main st 257 & 258 ..	<i>m. y</i> f
	253	Turner E	.. Farmer	Geo st 63 ..	<i>f m f</i>
	232	Taylor Stewart	.. Laborer	Water st 54 ..	<i>h m f</i>
	4	Whalen James	.. Laborer	Con 4 pt 11 ..	<i>m. y</i> h
	36	Wilson James	.. Baker	Main st pt 191 & 192 ..	<i>m. y</i> h
	212	Young Wm	.. Laborer	S L R pt lot 5 ..	<i>h m f</i>

Part II—Persons entitled to vote at Municipal elections only.

224	Atkinson Mrs	Frank st 22 ..	<i>f</i>
233	Dagg Mrs	Water st 53 ..	<i>f</i>
205	Deacon Mrs	Wm st 1 ..	<i>f</i>
260	Davis Mrs	S L R pt lot 5 ..	<i>f</i>
7	Eedy Mrs	Main st	.. 271, 272, 273, 274 ..	<i>f</i>
22	Price Mrs	Main st 254 ..	<i>f</i>
	Gillespie Mrs	Water st 54 ..	<i>f</i>
18	Hutchinson Mrs	Main st 259 ..	<i>f</i>
214	Hodgins Mrs	Water st pt 80 ..	<i>f</i>
218	Hodgins Mrs	Wm st 17 ..	<i>f</i>
	Johnston Mrs	Main st n pt 29 ..	<i>f</i>
31	Lee Mrs	Main st 41 ..	<i>f</i>
25	Lintott Mrs	Princess pt 205 ..	<i>f</i>
51	McNance Mrs	Main st w pt 28 ..	<i>f</i>

Jurors	No. on roll	Name	Profession	Con. or Street	Lot or pt. of Lot	Class
	203	McRoberts Mrs	Wm st 3 ..	f
	210	Monds Mrs	Wm st 12 ..	f
	226	MaGuire Mrs	Frank st n pt 23 ..	f
	207	O'Shea Mrs	Wm st 10 & 11 ..	f
	200	Sprout Mrs	Wm st e pt 5 ..	f
	204	Varley Mrs	Wm st 2 ..	h
	26	Willis Mrs	Princess 203 & 204 ..	f
	242	Wright Mrs	Water st 44 ..	f
	212	Young Mrs	S L R pt 5 ..	f

Part III—Persons entitled to vote at elections to the Legislative Assembly only.

	266	Hawkshaw John	.. Laborer	Main st n pt 30 ..	m f
	267	Anderson Thos	.. Laborer	Main st n pt 30 ..	m f
	268	Russell Francis	.. Laborer	Water st 35 & 36 ..	m f
	269	Knox George	.. Laborer	S L R pt farm 5 ..	m f
	270	Sprout Wm	.. Laborer	Water st 51 ..	m f
	271	Crawley George	Cheesemaker	Water st 50 ..	m f
	272	Crawley Wm	Cheesemaker	Water st 50 ..	m f
	273	Armitage Malcolm	.. Clerk	Main st 190 ..	m f
	274	Marshall John	.. Clerk	Wm st 12 ..	m f

POLLING SUB-DIVISION NO. 2.

PART I—Persons entitled to vote at both Municipal and Legislative Assembly elections.

j	180	Adcock George	.. Miller	Market st 126 & 127 ..	h m f
	78	Armitage Wm	.. Farmer	Butler st	.. 126, 108, & 104 ..	t m f
j	82	Bawden John	.. Bricklayer	Main st 93 ..	f m f
	83	Bawden W J	.. Bricklayer	Main st 93 ..	o s m f
	84	Bawden Geo	.. Bricklayer	Main st 93 ..	m f
	183	Blackwell Edward	.. Laborer	Maple st 136 ..	f m f
	184	Blackwell T J	.. Laborer	Maple st 136 ..	o s m f
j	189	Bryant Wm	.. Printer	Con 4 n pt 3 ..	h m f
	190	Bryant Richard	.. Printer	Con 4 w pt 3 ..	o s m f
	194	Butler Everet	.. Laborer	Maple st 62 ..	h m f
	169	Cooper James	.. Laborer	Market st 101 ..	f m f
	170	Cooper Richard	.. Laborer	Market st 101 ..	o s m f
j	178	Collins Henry	.. Merchant	Market st 129 ..	f m f
	179	Collins E J	.. Tinsmith	Market st 129 ..	o s m f
	188	Culbert John	.. Laborer	Con 4 pt 3 ..	h m f
	199	Cooper Wm	.. Laborer	Beech st 9 ..	f m f
	124	Clapp John	.. Gardener	Con 4	.. 223, 224, & 225 ..	h m f
	99	Diamond Wm	Enginedriver	Main st pt 158 ..	f m f
	114	Dagg Wm	Blacksmith	Alice st 12 ..	h m f
	151	Downham Peter	Cheesemaker	Alice st e pt 165 ..	f m f

Jurors	No. on roll	Name	Profession	Con. or Street	Lot or pt. of Lot	Class
j	153	Dight Thomas	.. Miller	Alice st	.. 167 ..	f m f
	196	Davis James	.. Gentleman	Beech st	.. 64 ..	f m f
	197	Davis Wm	.. Gentleman	Beech st	.. 61 ..	f m f
j	181	Endicott Wm	.. Painter	Market st 133 ..	h m f
	113	Ellis George	.. Artist	Main st w pt 7 ..	h m f
j	118	Frise A II	.. Barber	Main st	.. 243, 244, 245 ..	f m f
	96	Fox Leonard	.. Merchant	Main st 87 ..	f m f
	143	Flavin James	.. Tailor	Alice st 13 ..	f m f
	148	Frank J C	.. Clerk	Alice st w pt 8 ..	h m f
	103	Fox John	.. Banker	Main st s pt 160 ..	f m f
j	79	Guest Robert	.. Gentleman	Main st	.. 99, 100, 101, 102 ..	<i>M. J. t</i>
	101	Grant J R	.. Merchant	Main st s pt 69 ..	<i>M. J. h</i>
	135	Gillispie Jas	.. Gentleman	Richmond 23 ..	<i>M. J. f</i>
	157	Gillis James	.. Clerk	Alice st	.. 170, 171, 172 ..	f m f
	92	Guest Robt	.. Farmer	Main st 84 & 85 ..	<i>M. J. h</i>
j	112	Hodgins Geo	.. Laborer	Main st 164 ..	h m f
	100	Hodgins Well'g	.. Butcher	Main st 159 ..	h m f
	79	Hodgins John S	.. Farmer	Main st 99, 100 ..	t
	73	Hall Joseph	.. Farmer	N L R farm 4 ..	l o s
	73	Hall Thos	.. Farmer	N L R farm 4 ..	l o s
	75	Hodgins Thos	.. Merchant	Main st 111, 112 ..	f m f
	87	Hodgins Thos	.. Blacksmith	Main st e pt 91 ..	f m f
	105	Hodgins R S	.. Merchant	Main st s pt 151 ..	f m f
	116	Hoosack Thos	.. M D	Main st 239 ..	f m f
	119	Hodgins John B	.. Grainbuyer	Main st	.. 246, 247 & 248 ..	f m f
	122	Hodgins John	.. Gentleman	Con 4 231 ..	f m f
	122	Howard Wm	.. Laborer	Con 4	.. 226, 227, 228 ..	f m f
	141	Haskett Mitchel	.. Gentleman	Alice st 15, 16 & 17 ..	f m f
	156	Hodgins Wm	.. Laborer	Alice st e pt 169 ..	h m f
	171	Hodgins John C	.. Gentleman	Market 99 ..	f m f
	172	Haskett Wm	.. Cattlebuyer	Market st 97, 98 ..	f m f
	174	Hooper Wm	.. Gentleman	Market st 94, 95 ..	f m f
	175	Hooper Wm E	.. Clerk	N L R pt lot 5 ..	f m f
	176	Haskett Chas	.. Cabinetma'er	Market st 89 ..	f m f
	98	Hodgins Ralph	.. Hotelkeeper	Main st 157, 158 ..	h m f
j	169	Jackson John	.. Foundryman	Alice st	.. 174, 75, 76, 77 ..	f m f
	161	Jackson Wm	.. Machinest	Alice st	.. 174, 75, 76, 77 ..	l o s m f
	74	Kent Wm	.. Gentleman	Main st	.. 113, 14, 15, 16, 117 ..	f m f
	164	Kenny John	.. Blacksmith	Alice st 184 ..	f m f
	165	Kenny John	.. Blacksmith	Alice st 184 ..	l e s m f
	173	Kinnee John	.. Carpenter	Market st 96, 68 ..	h m f
	117	Levitt Alex	.. Laborer	Main st 240 ..	h m f
	75	Langford Jos	.. Gentleman	Main st 107, 8, 9, 110 ..	f m f
	186	Langford Wm	.. Gentleman	Market st 105, 6, 7, 108 ..	m f
j	85	McNamara R	.. Clerk	Main st 92 ..	h m f
	80	McCosh J D	.. Merchant	Main st 97, 98 ..	f m f
	88	Murdock Thom'ou	.. Shoemaker	Main st 90 ..	f m f
	90	Murdy Wellington	Main st 81 ..	o s m f
	89	Murdy John	.. Undertaker	Main st 81 ..	f m f
	91	McLeod Wm	.. Car'g mkr.	Main st 82 ..	f m f
	92	McConnell J H	.. Tailor	Main st 84, 85 ..	l o f
	97	Matheson Wm	.. Watchmaker	Main st 88 ..	f m f

Jurors	No. on roll	Name	Profession	Con. or Street	Lot or pt. of Lot	Class
j	152	McRoberts J H	Cattlebuyer	Alice st	166	f m f
	160	McIlhergey P	Gentleman	Main st	n pt 159	f m f
j	162	Mara Edward	Merchant	Main st	n pt 160	f m f
	130	Mason David	Laborer	Princess st	38	h m f
	127	McKinnon Donald	Laborer	Princess st	82	h m f
j	145	MaGuire John	Car'g mkr.	Alice st	11	f m f
	187	Murley John	Gentleman	Con 4	pt 62	f m f
	163	McMillian Neil	Saddler	Alice st	179, 80	h m f
	149	Neil Albert	Merchant	Alice st	e pt 7	f m f
	143	O'Neil Daniel	Gentleman	Alice at	13	h m f
	93	O'Shea Jas	Shoemak'r	Main st	e pt 85	f m f
	98	O'Donohue John	Agent	Main st	157, 158	f m f
	182	Ollway James	Laborer	Maple st	147, 148	f m f
	109	O'Neil Daniel	Gentleman	Beech st	153	f m f
	121	Patrick Wm	Farmer	Con 4	251, 229, 239	f m f
	177	Purloy Daniel	Carpenter	Market at	84	f m f
j	110	Pogue George	Barber	Main st	n pt 164	h m f
	111	Parks J S	Saddler	Main st	164	h m f
	77	Quigley Wm	Merchant	Main st	105, 106	h m f
	166	Quigley Wm	Shoemaker	Market st	104	f m f
	142	Quigley Caleb	Painter	Alice st	14	f m f
	147	Quarry H B	Merchant	Frank st	435	f m f
	150	Rollins Wm	Farmer	Alice st	w pt 165	f m f
	167	Robinson Thos	Car'g mkr.	Market st	103	f m f
	168	Robinson George	Butcher	Market st	103	o s m f
j	181	Reid Wm	Merchant	Market st	133	f m f
	97	Stanley Wm R	Merchant	Main st	105, 106	f m f
j	81	Stanley Wm E	Merchant	Main st	95, 96	f m f
	109	Smith Montgomery	Merchant	Main st	n pt 163	f m f
	114	Saunders C W	Book-keeper	Main st	236, 237, 238	f m f
	115	Saunders C A	Book-keeper	Main st	236, 237, 238	l o s m f
	126	Saddler John	Laborer	Princess st	31	f m f
j	131	Stanley G A	Clerk	Princess st	37	f m f
j	107	Stanley Charles	Clerk	Main st	162	f m f
	137	Tracey Thos	Laborer	Alice st	23, 24	o s m f
	198	Thurman Green	Laborer	Beech st	88	f m f
	113	Thoms J S	Artist	Main st	7	f m f
	195	Williams John	Laborer	Maple st	pt 163	h m f
	193	Webb Thomas	Gentleman	Beech st	pt 4	f m f
	188	Ward Michael	Flaxbuyer	Con 4	pt 3	f m f
	189	Ward Wm	Flaxbuyer	Con 4	pt 3	f m f

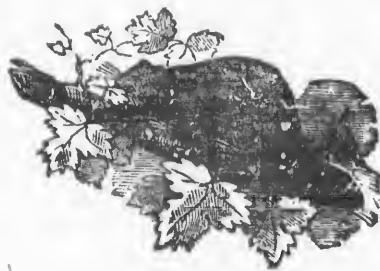
Part II—Persons entitled to vote at Municipal elections only.

104	Atkinson Miss E	..	Main st	161	..	i
189	Bryant Mrs	..	Con 4	n pt 3	..	f
162	Brownlee Mrs	..	Alice st	178	..	f
151	Catheart Mrs	..	Alice st	163	..	f
131	Cole Mrs	..	Princess st	210, 211	..	f

Jurors	No on roll	Name	Profession	Con. or Street	Lot or pt. of Lot	Ct. or
	124	Cain Mrs	..	Con 4 223, 225 ..	f
	125	Davis Mrs	..	Con 4 219, 222 ..	f
	139	Dagg Mrr	..	Alice st 20 ..	f
	191	Deacon Mrs	..	Con 4 pt 2 ..	f
	183	Frank Mrs	..	Princess st 208, 209 ..	f
	94	Gordacre Mrs	..	Main st pt 86 ..	f
	155	Gifford Mrs	..	Alice st e pt 169 ..	f
	158	Gillis Mrs	..	Market st 102 ..	f
	140	Harrigan Mrs	..	Alice st 18, 19 ..	f
	138	Hodgins Mrs	..	Alice st 21, 22 ..	f
	159	Hodgins Mrs	..	Alice st 173 ..	f
	120	Haslam Mrs	..	Main st 249 ..	f
	173	Kinnece Mrs	..	Market st 96, 68 ..	f
	95	Lynham Miss	..	Main st e pt 86 ..	f
	129	Langford Mrs	..	Princess st 35, 36 ..	f
	128	O'Mara Mrs	..	Princess st 33, 34 ..	f
	127	O'Connors Mrs	..	Princess st 32 ..	f
	86	Simpson Mrs	..	Main st 97 ..	f
	163	Scilly Mrs	..	Alice st	.. 175, 80, 81, 82, 183 ..	f
	136	Tracey Mrs	..	Alice st 23, 24 ..	f

Part III—Persons entitled to vote at elections to the Legislative Assembly only.

Armitage Eli	..	Alice st	168 ..	m f
Smith Albert	..	Alice st	168 ..	m f
Robinson Edward	..	Market st	103 ..	m f
Stanley Aljoe	..	Main st	pt 5 ..	m f
Hodgins John J	..	Main st	a pt 161 ..	m f
Mount. in Richard	..	Shoemak'r S L R	pt farm 5 ..	m f
Quigley Frank	..	Artist Market st	104 ..	m f
Kenny Thos	..	Blacksmith Alice st	184 ..	m f
Cooper Joseph	..	Laborer Market st	101 ..	m f
McCarty Daniel	..	Laborr Maple st	pt 162 ..	m f
Empy Alexander	..	Clerk Main st	162 ..	m f



I, Frederic James Judge of the
County Court of the County of Middlebury
pursuant to the 17th Section of
the Ontario Valuation Act of 1889
do hereby certify that the Annexed
is a Correct Copy of the List
of Values for the Year 1889
received by me from the
Clerk of the Municipality of the
Village of Lucan according
to my Revision & Correction
thereof pursuant to the provisions
of said Act

Sept 25/89 F. James
J

14
admission
of
1899
issued
to
Mr
Long
from
Baltimore

NOV 11 1899

