

**CIHM  
Microfiche  
Series  
(Monographs)**

**ICMH  
Collection de  
microfiches  
(monographies)**



**Canadian Institute for Historical Microreproductions / Institut canadien de microreproductions historiques**

**© 1998**



The copy filmed here has been reproduced thanks to the generosity of:

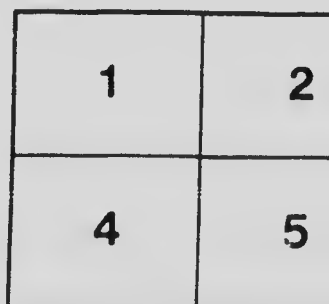
Library  
Agriculture Canada

The images appearing here are the best quality possible considering the condition and legibility of the original copy and in keeping with the filming contract specifications.

Original copies in printed paper covers are filmed beginning with the front cover and ending on the last page with a printed or illustrated impression, or the back cover when appropriate. All other original copies are filmed beginning on the first page with a printed or illustrated impression, and ending on the last page with a printed or illustrated impression.

The last recorded frame on each microfiche shall contain the symbol  $\rightarrow$  (meaning "CONTINUED"), or the symbol  $\nabla$  (meaning "END"), whichever applies.

Maps, plates, charts, etc., may be filmed at different reduction ratios. Those too large to be entirely included in one exposure are filmed beginning in the upper left hand corner, left to right and top to bottom, as many frames as required. The following diagrams illustrate the method:



L'exemplaire filmé fut reproduit grâce à la générosité de:

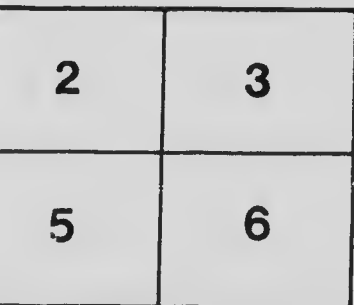
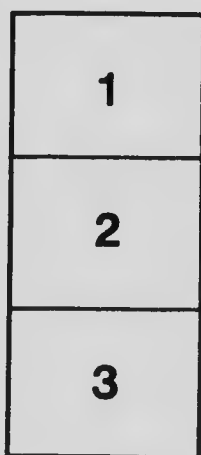
Bibliothèque  
Agriculture Canada

Les images suivantes ont été reproduites avec le plus grand soin, compte tenu de la condition et de la netteté de l'exemplaire filmé, et en conformité avec les conditions du contrat de filmage.

Les exemplaires originaux dont la couverture en papier est imprimée sont filmés en commençant par le premier plat et en terminent soit par la dernière page qui comporte une empreinte d'impression ou d'illustration, soit par le second plat, selon le cas. Tous les autres exemplaires originaux sont filmés en commençant par la première page qui comporte une empreinte d'impression ou d'illustration et en terminent par la dernière page qui comporte une telle empreinte.

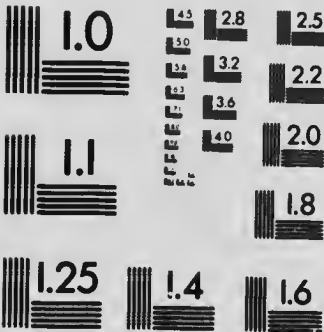
Un des symboles suivants apparaîtra sur la dernière image de chaque microfiche, selon le cas: le symbole  $\rightarrow$  signifie "A SUIVRE", le symbole  $\nabla$  signifie "FIN".

Les cartes, planches, tableaux, etc., peuvent être filmés à des taux de réduction différents. Lorsque le document est trop grand pour être reproduit en un seul cliché, il est filmé à partir de l'angle supérieur gauche, de gauche à droite, et de haut en bas, en prenant le nombre d'images nécessaire. Les diagrammes suivants illustrent la méthode.



# MICROCOPY RESOLUTION TEST CHART

(ANSI and ISO TEST CHART No. 2)

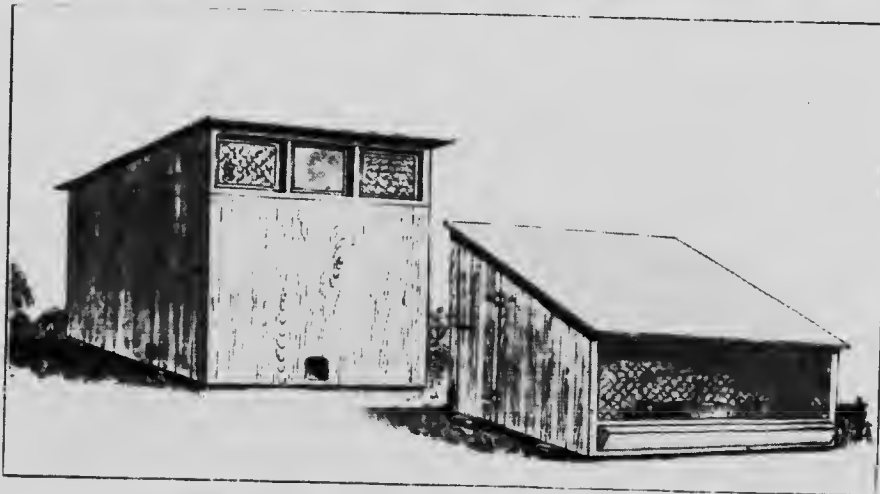


**APPLIED IMAGE Inc**

1653 East Main Street  
Rochester, New York 14609 USA  
(716) 482 - 0300 - Phone  
(716) 288 - 5989 - Fax

# THE UTILITY POULTRY HOUSE

BY  
G. E. PARHAM.



---

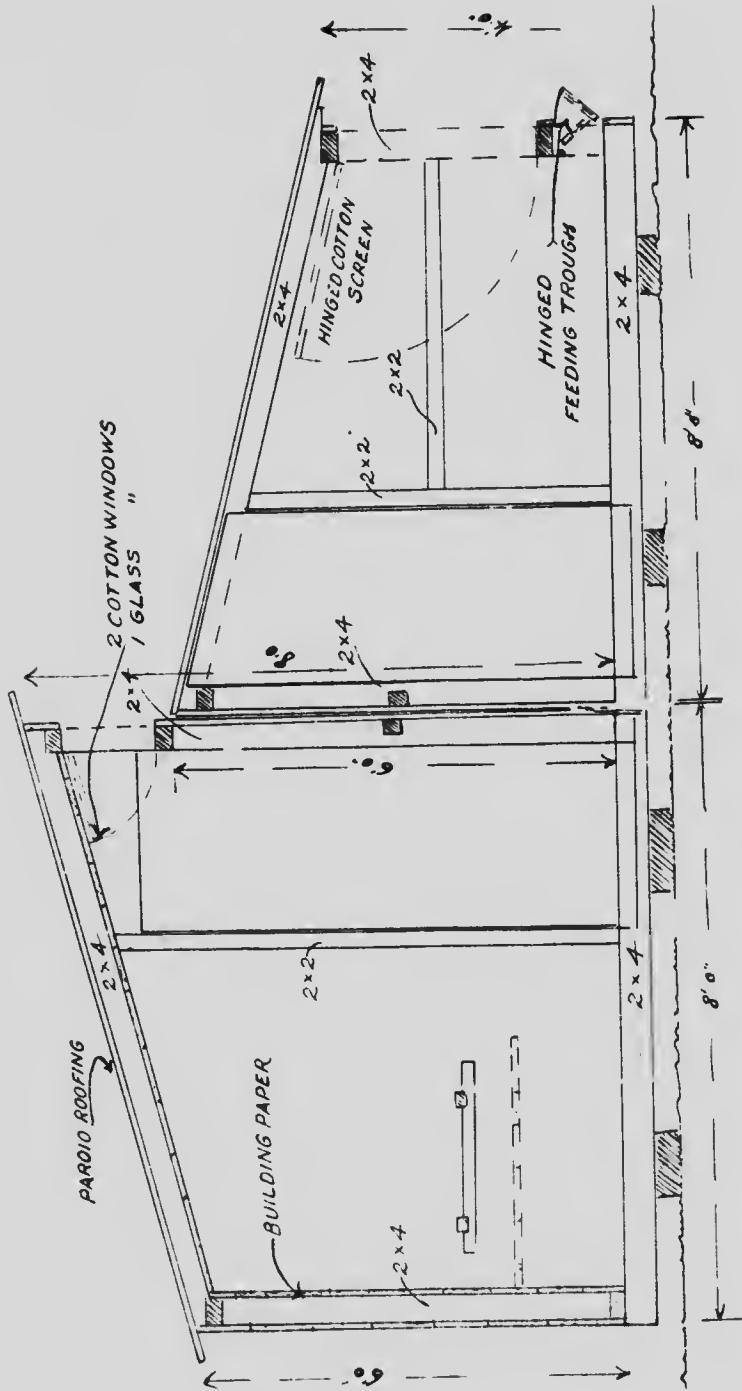
## DOMINION EXPERIMENTAL FARMS.

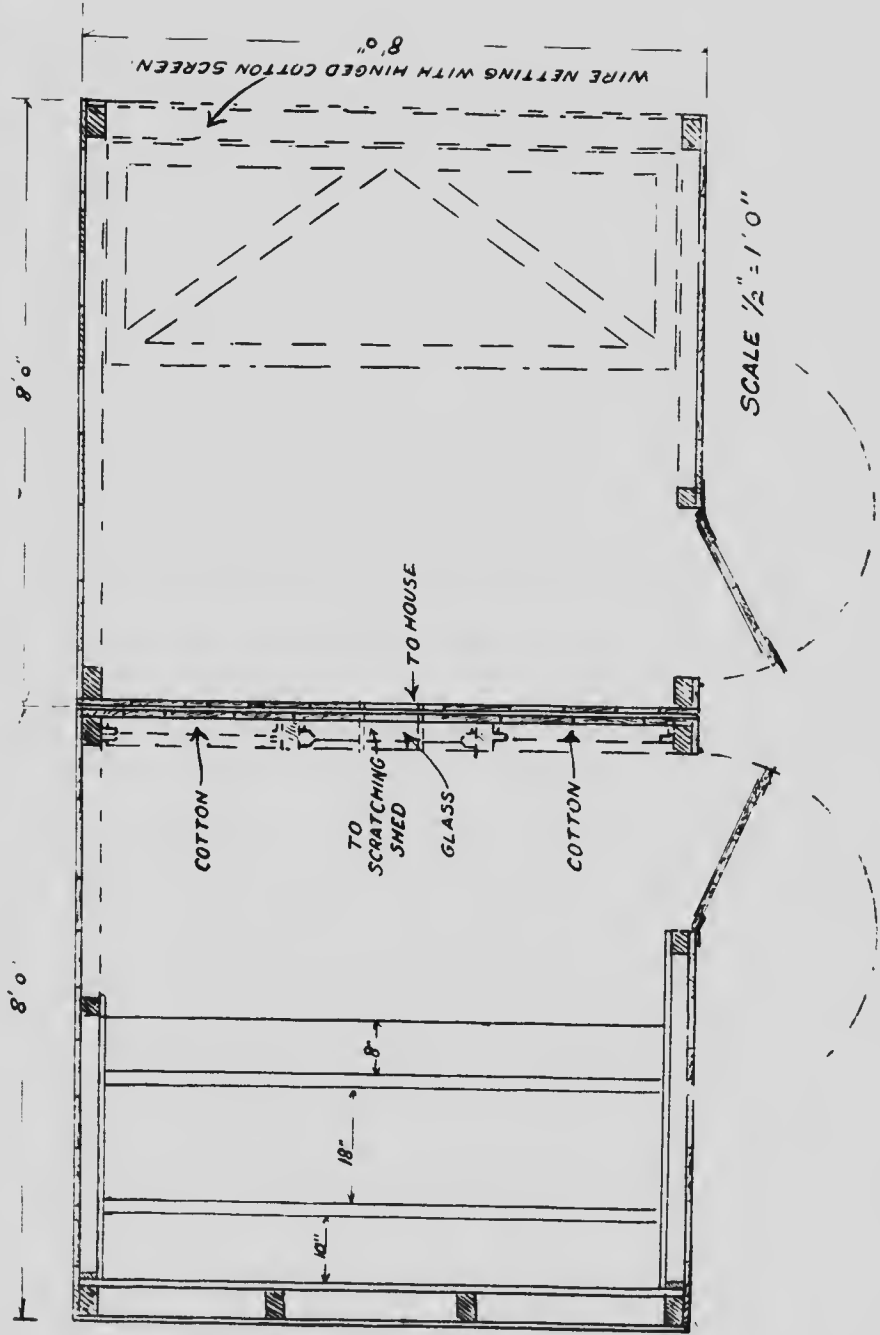
J. H. GRISDALE, B.Agr.,  
Director.

G. E. PARHAM,  
Supt. Experimental Farm, Invermere, B.C.

EXHIBITION CIRCULAR No. 54.

(January, 1916.)







## THE UTILITY POULTRY HOUSE.

### ADVANTAGES OF THIS TYPE OF COLONY HOUSE.

1. When the two parts are run together it makes a house large enough to accommodate 25 or 30 laying hens throughout the winter.
2. The front section can be used for brooding chicks in the spring and the rear section for a breeding pen, or the whole winter flock, when they get free range, can be accommodated in this half.
3. For poultrymen who have only one horse, this gives a fair-sized winter house, but one that can be moved by a single horse when required.
4. In rough or uneven land the fact that it can be separated into sections makes it possible to move it from place to place.

### UTILIZED THROUGHOUT THE WHOLE YEAR.

The main feature which distinguishes this house from others is the arrangement whereby it is possible to utilize the building to the full by converting the winter scratching shed into a separate brooder house during the summer months when the scratching shed is not needed.

The building, as constructed in the accompanying drawings is of the movable type, and so that it may be constructed as lightly as possible it is suggested that the corner studs only are constructed of 2 by 4's and that the rest of the studding be of 2 by 2's.

It being of the first importance that the birds should be supplied with comfortable roosting quarters in the cold season the rear portion, as shown in the accompanying sketches, should be lined with building paper on both sides of the studding, and a second sheathing of lumber affixed on the inside of the studding, making a dead air space and preventing draughts.

If desired the front of the roosting section may have cotton instead of wood in the front, fifteen inches above the floor to a few inches below the place where the front roof joins.

### LIST OF MATERIAL REQUIRED.

- Eleven pieces 2 inches by 4 inches, 16 feet long.
- Four pieces 2 inches by 4 inches, 12 feet long.
- Eight pieces 2 inches by 4 inches, 18 feet long.
- Four pieces 2 inches by 4 inches, 12 feet long.
- Four pieces 6 inches by 6 inches, 10 feet long for runners.
- Seven hundred board feet shiplap.
- Four yards poultry wire.
- Four yards cotton cloth.
- Roofing to cover 162 square feet.
- Hardware, hinges and fastenings for two doors and four windows.
- Nails, 10 pounds 4-inch.
- Nails, 40 pounds 2½-inch.



