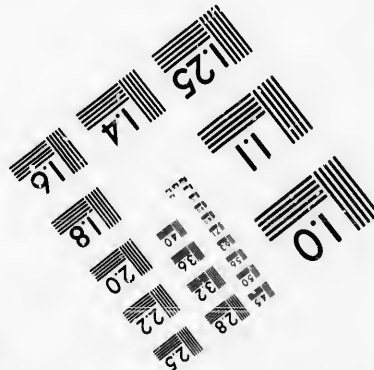
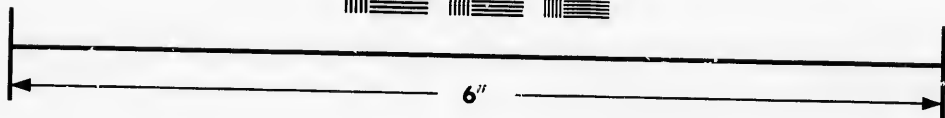
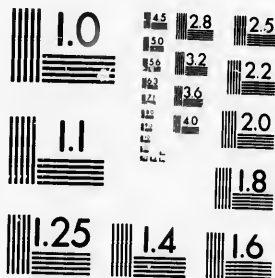


**IMAGE EVALUATION
TEST TARGET (MT-3)**



**Photographic
Sciences
Corporation**

23 WEST MAIN STREET
WEBSTER, N.Y. 14580
(716) 872-4503

**CIHM/ICMH
Microfiche
Series.**

**CIHM/ICMH
Collection de
microfiches.**



Canadian Institute for Historical Microreproductions / Institut canadien de microreproductions historiques

© 1986

Technical and Bibliographic Notes/Notes techniques et bibliographiques

The Institute has attempted to obtain the best original copy available for filming. Features of this copy which may be bibliographically unique, which may alter any of the images in the reproduction, or which may significantly change the usual method of filming, are checked below.

L'Institut a microfilmé le meilleur exemplaire qu'il lui a été possible de se procurer. Les détails de cet exemplaire qui sont peut-être uniques du point de vue bibliographique, qui peuvent modifier une image reproduite, ou qui peuvent exiger une modification dans la méthode normale de filmage sont indiqués ci-dessous.

- | | |
|--|--|
| <input type="checkbox"/> Coloured covers/
Couverture de couleur | <input type="checkbox"/> Coloured pages/
Pages de couleur |
| <input type="checkbox"/> Covers damaged/
Couverture endommagée | <input type="checkbox"/> Pages damaged/
Pages endommagées |
| <input type="checkbox"/> Covers restored and/or laminated/
Couverture restaurée et/ou pelliculée | <input type="checkbox"/> Pages restored and/or laminated/
Pages restaurées et/ou pelliculées |
| <input type="checkbox"/> Cover title missing/
Le titre de couverture manque | <input type="checkbox"/> Pages discoloured, stained or foxed/
Pages décolorées, tachetées ou piquées |
| <input type="checkbox"/> Coloured maps/
Cartes géographiques en couleur | <input type="checkbox"/> Pages detached/
Pages détachées |
| <input type="checkbox"/> Coloured ink (i.e. other than blue or black)/
Encre de couleur (i.e. autre que bleue ou noire) | <input type="checkbox"/> Showthrough/
Transparence |
| <input type="checkbox"/> Coloured plates and/or illustrations/
Planches et/ou illustrations en couleur | <input type="checkbox"/> Quality of print varies/
Qualité inégale de l'impression |
| <input type="checkbox"/> Bound with other material/
Relié avec d'autres documents | <input type="checkbox"/> Includes supplementary material/
Comprend du matériel supplémentaire |
| <input type="checkbox"/> Tight binding may cause shadows or distortion
along interior margin/
La reliure serrée peut causer de l'ombre ou de la
distorsion le long de la marge intérieure | <input type="checkbox"/> Only edition available/
Seule édition disponible |
| <input type="checkbox"/> Blank leaves added during restoration may
appear within the text. Whenever possible, these
have been omitted from filming/
Il se peut que certaines pages blanches ajoutées
lors d'une restauration apparaissent dans le texte,
mais, lorsque cela était possible, ces pages n'ont
pas été filmées. | <input type="checkbox"/> Pages wholly or partially obscured by errata
slips, tissues, etc., have been refilmed to
ensure the best possible image/
Les pages totalement ou partiellement
obscurcies par un feuillet d'errata, une pelure,
etc., ont été filmées à nouveau de façon à
obtenir la meilleure image possible. |
- Additional comments: [Printed ephemera] [4] p. This copy is a photoreproduction.
Commentaires supplémentaires:

This item is filmed at the reduction ratio checked below/
Ce document est filmé au taux de réduction indiqué ci-dessous.

10X	14X	18X	22X	26X	30X
<input type="checkbox"/>	<input type="checkbox"/>	<input type="checkbox"/>	<input checked="" type="checkbox"/>	<input type="checkbox"/>	<input type="checkbox"/>
12X	16X	20X	24X	28X	32X

The copy filmed here has been reproduced thanks to the generosity of:

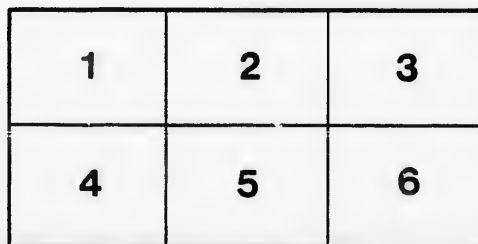
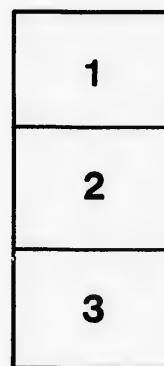
D. B. Weldon Library
University of Western Ontario
(Regional History Room)

The images appearing here are the best quality possible considering the condition and legibility of the original copy and in keeping with the filming contract specifications.

Original copies in printed paper covers are filmed beginning with the front cover and ending on the last page with a printed or illustrated impression, or the back cover when appropriate. All other original copies are filmed beginning on the first page with a printed or illustrated impression, and ending on the last page with a printed or illustrated impression.

The last recorded frame on each microfiche shall contain the symbol → (meaning "CONTINUED"), or the symbol ∇ (meaning "END"), whichever applies.

Maps, plates, charts, etc., may be filmed at different reduction ratios. Those too large to be entirely included in one exposure are filmed beginning in the upper left hand corner, left to right and top to bottom, as many frames as required. The following diagrams illustrate the method:



L'exemplaire filmé fut reproduit grâce à la générosité de:

D. B. Weldon Library
University of Western Ontario
(Regional History Room)

Les images suivantes ont été reproduites avec le plus grand soin, compte tenu de la condition et de la netteté de l'exemplaire filmé, et en conformité avec les conditions du contrat de filmage.

Les exemplaires originaux dont la couverture en papier est imprimée sont filmés en commençant par le premier plat et en terminant soit par la dernière page qui comporte une empreinte d'impression ou d'illustration, soit par le second plat, selon le cas. Tous les autres exemplaires originaux sont filmés en commençant par la première page qui comporte une empreinte d'impression ou d'illustration et en terminant par la dernière page qui comporte une telle empreinte.

Un des symboles suivants apparaîtra sur la dernière image de chaque microfiche, selon le cas: le symbole → signifie "A SUIVRE", le symbole ∇ signifie "FIN".

Les cartes, planches, tableaux, etc., peuvent être filmés à des taux de réduction différents. Lorsque le document est trop grand pour être reproduit en un seul cliché, il est filmé à partir de l'angle supérieur gauche, de gauche à droite, et de haut en bas, en prenant le nombre d'images nécessaire. Les diagrammes suivants illustrent la méthode.

re
détails
es du
modifier
er une
filmage

es

errata
to

pelure,
on à



32X

PRESBYTERIAN

Hymnals & Psalm Books

IN FINE BINDINGS

For Presentation and Holiday Gifts

*

HART & COMPANY

Publishers and Booksellers

HAVE prepared with great care the following extensive line of the PRESBYTERIAN HYMNALS AND PSALM BOOKS, in Handsome Bindings, in a variety of Styles, suitable for Presentation and Holiday Gifts. They are got up in many New and Attractive Styles, consisting of the HYMNAL AND PSALM BOOK in one Volume, HYMNAL AND PSALM BOOK in separate Volumes, HYMNAL AND PSALM BOOK in Combination "Slip" Sets in 2 vols. Hymnal and Psalm Book in Handsome "Drop" Cases, 2 vols. Also, BIBLE, HYMNAL AND PSALM BOOK in Combination "Slip" Set in 2 and 3 vols. All these are done up in Selected Leathers of FRENCH MOROCCO, SEAL GRAIN MOROCCO, and FINE CALF. The Books are handsomely bound, Edges Gilt, Red under Gold, Round Corners. The HYMNAL is printed on special paper from the new plates lately made. The whole series is as finely got up and presents as creditable an appearance as any line of Hymn Books issued.



HART & COMPANY

Publishers, Booksellers & Stationers

31 AND 33 KING STREET WEST

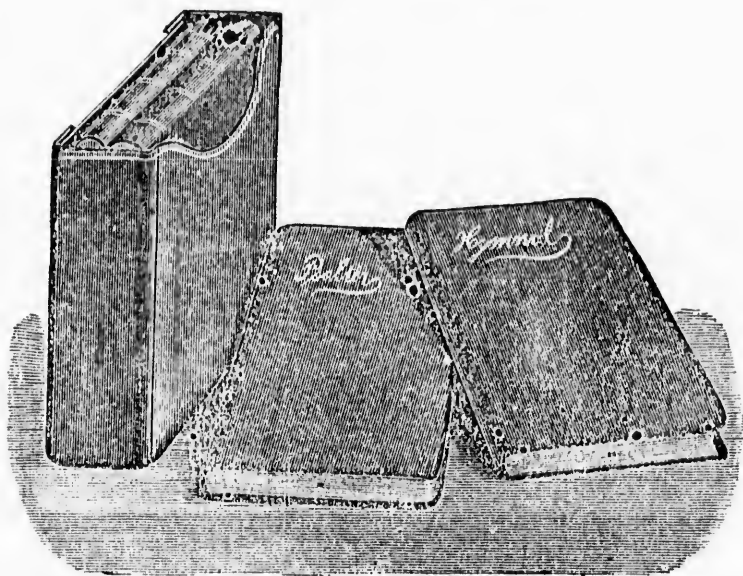
FOR SALE BY

TORONTO

T. J. DAY, BOOKSELLER

GUELPH, ONT.

DESCRIPTIVE PRICE LIST



This Illustration shows the Hymnal and Psalm Book in the "Drop" Case, and the Single Books on their sides.



Reformed Hymnal

Bourgeois 24mo.

FRENCH MOROCCO,	limp, Edges Gilt Red under Gold, Round Corners	\$ 1 00
SEAL GRAIN " Gold Roll	" " " " " Square "	1 50
FINE CALF	" " " " " Round "	2 00

Psalm Book (to match Hymnal)

Bourgeois 24mo.

FRENCH MOROCCO,	limp, Edges Gilt Red under Gold, Round Corners	75
SEAL GRAIN " Gold Roll,	" " " " " Square "	1 25
FINE CALF	" " " " " Round "	2 00

Hymnal and Psalm Book, in one volume

Bourgeois 24mo.

FRENCH MOROCCO, limp, Round Corners		1 40
SEAL GRAIN " " Gold Roll, Edges Gilt, Red under Gold, Square Corners		2 00
FINE CALF " " " " " Round "		2 50

Hymnal and Psalm Book, in one vol.

Pearl 24mo.

FRENCH MOROCCO, limp,	Edges Gilt, Red under Gold, Round Corners	1 20
SEAL GRAIN " " Gold Roll, " " " " Square " " "		1 50
FINE CALF, " " " " " " Round " " "		2 00

Hymnal and Psalm Book, in two vols.

IN "SLIP" COMBINATION CASE

An entirely New Style. Bourgeois 24mo.

FRENCH MOROCCO,	Edges Gilt Red under Gold, Round Corners	2 00
SEAL GRAIN " " Gold Roll " " " " " " " " " " " "		3 00
FINE CALF, " " " " " " " " " " " " " " " "		3 75

Hymnal and Psalm Book, in two vols.

IN A "DROP" CASE

Bourgeois 24mo.

FRENCH MOROCCO,	Edges Gilt, Red under Gold, Round Corners	2 50
SEAL GRAIN " " Gold Roll, " " " " " " " " " " " "		3 50
FINE CALF, " " " " " " " " " " " " " " " "		4 75

Bible, Hymnal and Psalm Book

IN "SLIP" COMBINATION CASE. 3 VOLS

Bourgeois 24mo.

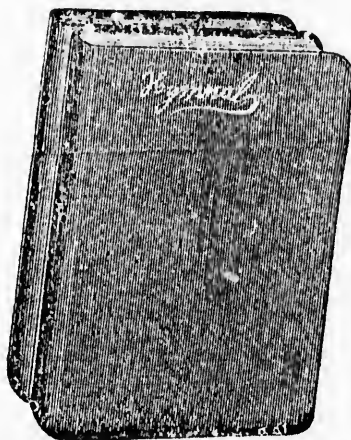
FINE CALF, Gold Roll, Edges Gilt, Red under Gold, Round Corners	6 00
---	------

Hymnal and Psalm Book

IN "SLIP" COMBINATION CASE. 2 VOLS.

Pearl 24mo.

FINE CALF, Gold Roll, Edges Gilt Red under Gold, Round Corners	4 50
--	------



This illustration shows the Hymnal and Psalm Book in the "Slip" Combination Set. This Set can be used as One Volume or Separated and used as Single Books.

Case,

.....\$ 1 00
 1 50
 2 00

 75
 1 25
 2 00

 1 40
 2 00
 2 50

HART & COMPANY
PUBLISHERS, BOOKSELLERS
AND STATIONERS

Invite inspection of their fine stock of Bibles, Family Bibles, Prayer and Hymn Books, Books in Sets, Holiday Books, Albums, Pocket Books, Card Cases, Revolving Book Cases, Dictionary Holders, etc.

Fine Stationery

Monograms, Crests, Address Dies, Visiting Cards, Invitations, Menu Cards, Printed and Engraved.



31 and 33 King Street West

TORONTO

