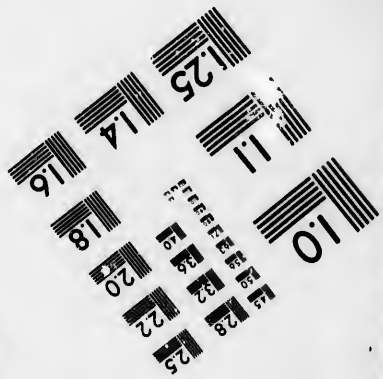
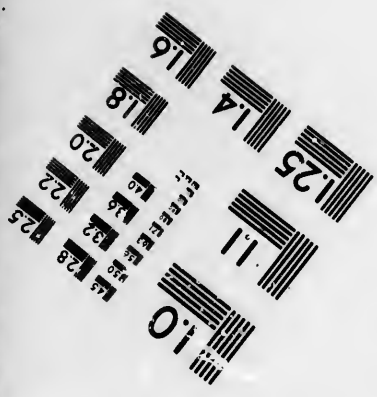
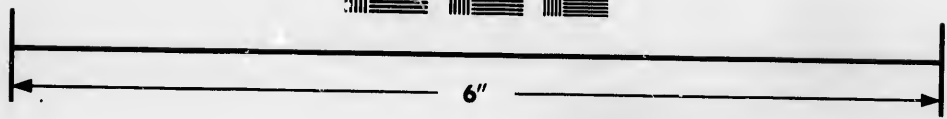
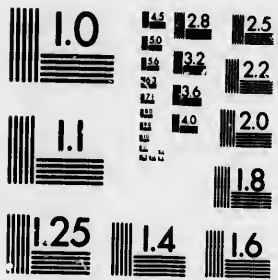


**IMAGE EVALUATION  
TEST TARGET (MT-3)**



**Photographic  
Sciences  
Corporation**

23 WEST MAIN STREET  
WEBSTER, N.Y. 14580  
(716) 872-4503

0  
11  
E 28  
E 32  
E 25  
E 22  
E 20  
E 18  
6

**CIHM/ICMH  
Microfiche  
Series.**

**CIHM/ICMH  
Collection de  
microfiches.**



Canadian Institute for Historical Microreproductions / Institut canadien de microreproductions historiques

ii  
oi  
57

**© 1986**

Technical and Bibliographic Notes/Notes techniques et bibliographiques

The Institut has attempted to obtain the best original copy available for filming. Features of this copy which may be bibliographically unique, which may alter any of the images in the reproduction, or which may significantly change the usual method of filming, are checked below.

L'Institut a microfilmé le meilleur exemplaire qu'il lui a été possible de se procurer. Les détails de cet exemplaire qui sont peut-être uniques du point de vue bibliographique, qui peuvent modifier une image reproduite, ou qui peuvent exiger une modification dans la méthode normale de filmage sont indiqués ci-dessous.

- Coloured covers/  
Couverture de couleur
- Covers damaged/  
Couverture endommagée
- Covers restored and/or laminated/  
Couvertures restaurées et/ou pelliculées
- Cover title missing/  
Le titre de couverture manque
- Coloured maps/  
Cartes géographiques en couleur
- Coloured ink (i.e. other than blue or black)/  
Encre de couleur (i.e. autre que bleue ou noire)
- Coloured plates and/or illustrations/  
Planches et/ou illustrations en couleur
- Bound with other material/  
Relié avec d'autres documents
- Tight binding may cause shadows or distortion along interior margin/  
La reliure serrée peut causer de l'ombre ou de la distorsion le long de la marge intérieure
- Blank leaves added during restoration may appear within the text. Whenever possible, these have been omitted from filming/  
Il se peut que certaines pages blanches ajoutées lors d'une restauration apparaissent dans le texte, mais, lorsque cela était possible, ces pages n'ont pas été filmées.

- Coloured pages/  
Pages de couleur
- Pages damaged/  
Pages endommagées
- Pages restored and/or laminated/  
Pages restaurées et/ou pelliculées
- Pages discoloured, stained or foxed/  
Pages décolorées, tachetées ou piquées
- Pages detached/  
Pages détachées
- Showthrough/  
Transparence
- Quality of print varies/  
Qualité inégale de l'impression
- Includes supplementary material/  
Comprend du matériel supplémentaire
- Only edition available/  
Seule édition disponible
- Pages wholly or partially obscured by errata slips, tissues, etc., have been refilmed to ensure the best possible image/  
Les pages totalement ou partiellement obscurcies par un feuillet d'errata, une pelure, etc., ont été filmées à nouveau de façon à obtenir la meilleure image possible.

Additional comments: [Printed ephemera] 1 sheet (verso blank)  
Commentaires supplémentaires:

This item is filmed at the reduction ratio checked below/  
Ce document est filmé au taux de réduction indiqué ci-dessous.

10X	12X	14X	16X	18X	20X	22X	24X	25X	28X	30X	32X
						✓					

The copy filmed here has been reproduced thanks to the generosity of:

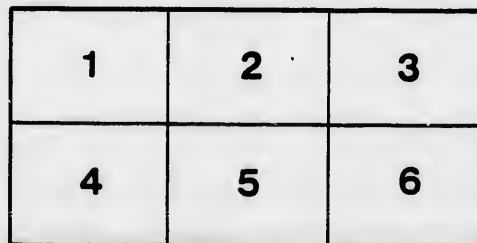
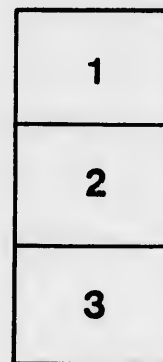
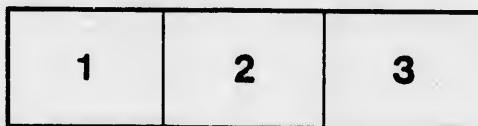
D. B. Waldon Library  
University of Western Ontario  
(Regional History Room)

The images appearing here are the best quality possible considering the condition and legibility of the original copy and in keeping with the filming contract specifications.

Original copies in printed paper covers are filmed beginning with the front cover and ending on the last page with a printed or illustrated impression, or the back cover when appropriate. All other original copies are filmed beginning on the first page with a printed or illustrated impression, and ending on the last page with a printed or illustrated impression.

The last recorded frame on each microfiche shall contain the symbol  $\rightarrow$  (meaning "CONTINUED"), or the symbol  $\nabla$  (meaning "END"), whichever applies.

Maps, plates, charts, etc., may be filmed at different reduction ratios. Those too large to be entirely included in one exposure are filmed beginning in the upper left hand corner, left to right and top to bottom, as many frames as required. The following diagrams illustrate the method:



L'exemplaire filmé fut reproduit grâce à la générosité de:

D. B. Waldon Library  
University of Western Ontario  
(Regional History Room)

Les images suivantes ont été reproduites avec le plus grand soin, compte tenu de la condition et de la netteté de l'exemplaire filmé, et en conformité avec les conditions du contrat de filmage.

Les exemplaires originaux dont la couverture en papier est imprimée sont filmés en commençant par le premier plat et en terminant soit par la dernière page qui comporte une empreinte d'impression ou d'illustration, soit par le second plat, selon le cas. Tous les autres exemplaires originaux sont filmés en commençant par la première page qui comporte une empreinte d'impression ou d'illustration et en terminant par la dernière page qui comporte une telle empreinte.

Un des symboles suivants apparaîtra sur la dernière image de chaque microfiche, selon le cas: le symbole  $\rightarrow$  signifie "A SUIVRE", le symbole  $\nabla$  signifie "FIN".

Les cartes, planches, tableaux, etc., peuvent être filmés à des taux de réduction différents. Lorsque le document est trop grand pour être reproduit en un seul cliché, il est filmé à partir de l'angle supérieur gauche, de gauche à droite, et de haut en bas, en prenant le nombre d'images nécessaire. Les diagrammes suivants illustrent la méthode.

# STATISTICAL REPORT OF THE UNITED PRESBYTERIAN CHURCH

For the Year ending 31st Dec 1885

PRESBYTERIES AND ORGANIZED CONGREGATIONS.	Stations within Bounds.	Average Attendance.	Members Added.	Members Removed.	Members on the Roll.	Baptisms.	Number in Religious Classes.	Attending Prayer Meetings.	Volumes in Libraries.	Number of Churches.	Is Property Deeded?	Congregational Debt.	Total Income.
												£ s. d.	£ s. d.
<b>PRESBYTERY OF TORONTO.</b>													
West Gwillimbury	8	1	2	41	1				171	1	Yes.		
Tecumseth	10	2	1	72	11		45		195	1	Yes.		
Essa	100	2	2	58	9					1	No.		
Toronto	500	31	42	254	19	150			650	3	No.		
Richmond Hill	2	400	29	13	150	24	25	40	350	3	Yes.		
1st Chinguacousy	1	130	9	1	88	10			150	1	Yes.		
2nd Chinguacousy	1	80	6	1	36	8			100	1	Yes.		
Pickering	1	260	18	4	154	15	100	12	850	2	Yes.		
Toronto Township and Brampton	1	200	22	26	107	12	40	30	200	2	Yes.	57 2 6	
Caledon	1	200	8	3	49	8	20						
Albion and Vaughan	1	170	7	2	71					1	No.		
	6	2220	135	97	1080	117	380	82	2616	14		57 2 6	1172 11 7
<b>PRESBYTERY OF FLAMBORO</b>													
Flamborough	325	42	37	218	24	60			400	2	Yes.	160 0 0	150 11 1 1/2
West Dumfries	300	18	20	252	28	80			340	1	Yes.	21 0 0	150 8 1 1/2
Paris	300	22	10	196	13	40	30		200	2	Yes.	217 18 0	350 7 0
Beverley	220	17	9	142	11	60	80		100	1	Yes.	60 0 0	130 17 2
Brantford	250	27	7	136	12	60	60		360	1	Yes.		167 16 1
Chippawa	1	210	19	3	71	11	90		500	2	Yes.	61 10 9	131 1 3
Caledonia	85	14	4	48	11	60			150	1	No.	100 0 0	185 1 4
Indiana	60	6		48	7					1	Yes.		32 17 6
Ancaster East	80	5	4	35	6	30			50	1	Yes.	52 10 0	29 4 4 1/2
Oneida	80	2	2	30	3								29 5 0
Hamilton	250	59	27	162	16	61	60		300	1	Yes.	440 9 11 1/2	348 17 7 1/2
Blandford	1	140	12	7	71	21	35	50	350	1	Yes.		56 0 0
St. Catharines	1	203	25	1	94	5	45		100	1	Yes.	75 0 0	110 7 6
Port Dalhousie	1	100	26		26	2	36	15	160	1	No.		33 16 0 1/2
St. George													
Glenmorris													
Mount Pleasant	80	7	2	50	3					1	Yes.	48 0 0	16 10 0
Norwichville	1	100	6		19					1	Yes.	21 8 4	20 3 8
Ancaster West	40	6		24		15			150	1	Yes.	10 0 0	20 0 0
Eastern Seneca	80	1		26	1								13 0 0
<i>Vacancies—St. George, Glenmorris, Mount Pleasant, Norwichville, Eastern Seneca</i>	4	2900	314	133	1648	174	672	295	3160	19		1267 17 0 1/2	2006 3 9 1/2
<b>PRES'Y OF WELLINGTON.</b>													
Eramosa	200	14	3	130	15	50	55		400	1	Yes.		120 10 3
Guelph	19	5	175	18		12					Yes.		100
Elora	2	300	45	22	141	17	134	10	406	2	Yes.	80 0 0	135 0 0
Esquesing	150	1	2	59	4				100	1	Yes.	105 0 0	
Brant	2	60	2	23	3		15			1	Yes.	1 12 7	12 15 7
Lake Shore	1	90		60	4	30	50	125					8 5 0
Sable River	50	2	7	35	5		15			1	Yes.		10 17 9
<i>Vacancies—Esquesing, Brant, Lake Shore, Sable River. Stations—Sydenham, Kincardine, Eden Mills, Greenock.</i>	5	850	83	41	623	66	214	157	1031	6		186 12 7	287 8 7
<b>PRESBYTERY OF LONDON</b>													
London	2	250				90				1	Yes.	67 10 0	206 1 0 1/2
English Settlement	2	160	7	3	132	10	116		750	1	Yes.		67 15 7 1/2
Bethel	2	160	5		91	8	90	30	450	1	Yes.		43 5 10
Blenheim	2	150	13	10	25	9	13		100	1	Yes.		62 19 5
McKillop	180	8	15	120	18	60	30	100		1	Yes.	100 0 00	68 12 5
Detroit													
Warrensville	1	250	18	4	112	14	45	50	130	1	Yes.	150 0 0	60 10 0
Bayfield	200	13	2	78	8	3			80	1	Yes.	50 0 0	95 4 2
Brucefield	60	2	2	40	6	20			80	1	Yes.		20 15 0
Chatham	175	21		65	18	55			220	1	Yes.	17 10 0	82 4 7
Tilbury	60			13	2								12 0 0
Downie	100	4		98	9							5 0 0	
St. Mary's	100	7		60	14						1	No.	
Ingersoll	40	2	1	28	2	35	14	200					30
<i>Vacancies—Ingersoll, Adelaide, Warwick, Goderich, Harwich*</i>	9	1885	100	37	923	118	527	194	2110	11		390 0 0	719 8 1

# UNITED PRESBYTERIAN CHURCH OF CANADA,

Year ending 31st December, 1852.

Is Property Decided?	EXPENDITURE ON									
	Congregational Debt.	Total Income.	Stipend.	Church Property.	Theological Fund.	Synod and Presbytery Funds.	Synod's Missions.	General Missions.	Contributions to the Poor.	Incidental Expen's
	£ s. d.	£ s. d.	£ s. d.	£ s. d.	£ s. d.	£ s. d.	£ s. d.	£ s. d.	£ s. d.	£ s. d.
	57 2 6	1172 11 7	683 9 2	254 6 10½	18 8 6	7 0 10	34 2 9½	24 5 6½		97 6 7½
es.	160 0 0	150 11 1½	120 0 0	.....	9 0 0	1 0 0	2 8 7½	4 0 0		14 2 6
es.	21 0 0	150 8 1½	112 10 0	6 3 0	2 8 10	1 4 8½	16 3 6	2 15 0		17 19 11
es.	217 18 0	350 7 0	103 15 6	227 14 2	1 16 4	.....	0 13 5	.....		16 1 8
es.	60 0 0	130 17 2	100 0 0	18 15 6	.....	.....	4 8 6	5 12 11		2 0 3
es.	.....	167 16 1	130 0 0	.....	4 0 0	.....	6 0 0	10 0 0	2 7 6	16 0 0
es.	61 10 9	131 1 3	88 15 1	44 6 3	2 0 0	1 17 6	10 6 9½	1 18 0		.....
es.	100 0 0	185 1 4	42 17 0	135 0 0	1 10 0	0 16 9	0 15 0	3 7 6		0 15 0
es.	.....	32 17 6	30 0 0	.....	1 10 0	0 12 6	0 15 0	.....		.....
es.	52 10 0	59 4 4½	27 15 0	28 5 0	1 0 0	0 5 0	1 19 4½	.....		.....
es.	.....	29 5 0	25 0 0	.....	1 0 0	3 5 0	.....	.....		.....
es.	440 9 11½	348 17 7½	150 0 0	558 6 7½	7 1 10	.....	10 0 0	10 0 0		53 19 1
es.	.....	56 0 0	50 0 0	.....	1 5 0	.....	.....	1 15 0		1 5 3½
es.	75 0 0	110 7 6	85 10 0	15 10 11½	.....	.....	.....	.....		9 6 6½
es.	.....	33 16 0½	25 0 0	5 19 1	.....	.....	.....	.....		2 16 11½
es.	48 0 0	16 10 0	18 5 0	.....	.....	.....	.....	.....		.....
es.	21 8 4	20 3 8	9 0 0	17 8 0	.....	.....	.....	.....		.....
es.	10 0 0	20 0 0	20 0 0	.....	.....	.....	.....	.....		.....
es.	.....	13 0 0	13 0 0	.....	.....	.....	.....	.....		.....
	1267 17 0½	2006 3 9½	1151 7 1	1057 8 7	32 12 0	9 1 5½	53 9 2½	39 8 5	2 7 6	134 7 2½
es.	.....	120 10 3	88 1 10½	20 1 7	3 12 6	2 15 0	8 6 5½	2 10 0		3 4 9½
es.	80 0 0	135 0 0	106 0 0	19 2 0	2 5 0	1 17 4	.....	.....		15 4 3
es.	105 0 0	.....	.....	6 0 0	.....	.....	.....	.....		.....
es.	1 12 7	12 15 7	0 15 0	12 8 10½	.....	.....	.....	.....		0 18 3
es.	.....	8 5 0	8 5 0	.....	.....	.....	.....	.....		0 7 1
es.	.....	10 17 9	1 5 0	9 5 8	.....	.....	.....	.....		.....
	186 12 7	287 8 7	304 6 10½	57 18 1½	5 17 6	4 12 4	8 6 5½	2 10 0		19 14 4½
es.	67 10 0	206 1 0½	125 0 0	48 12 8½	1 9 11½	1 12 6	14 12 3½	.....		20 13 7
es.	.....	67 15 7½	50 0 0	3 7 6	.....	.....	11 17 9	1 7 3		1 3 1½
es.	.....	43 5 10	32 10 0	.....	.....	.....	7 5 0	1 5 5		2 10 0
es.	.....	62 19 5	47 18 6	1 7 9	.....	.....	4 5 2	0 5 2		4 17 11
es.	100 0 0	68 12 5	55 9 11	.....	1 5 0	1 5 0	5 0 0	4 0 0		1 12 6
es.	150 0 0	60 10 0	46 10 0	11 10 0	.....	0 10 0	.....	.....		2 0 0
es.	50 0 0	95 4 2	34 16 8	60 0 0	.....	0 7 6	.....	.....		.....
es.	.....	20 15 0	20 0 0	.....	.....	0 5 0	.....	.....		0 10 0
es.	17 10 0	82 4 7	63 10 0	12 10 0	.....	.....	.....	.....		6 4 7
es.	5 0 0	12 0 0	12 0 0	.....	.....	.....	.....	.....		.....
	.....	.....	30 0 0	.....	.....	.....	.....	.....		.....
es.	390 0 0	719 8 1	529 13 1	137 7 11½	9 14 11½	1 0 0	12 0 0	6 17 10		20 11 2½

## PRESBYTERY OF LONDON

London .....	2	250								90		1	Yes.	67 10 0	206 1 0	125 0
English Settlement .....	2	160	7	3	132	10	116		75		1	Yes.		67 15 7	50 0	
Bethel .....	2	160	5			91	8	90	30	45	1	Yes.		43 5 10	32 10	
Blenheim .....	2	150	13	10	85	9	13		10	1	Yes.			62 19 5	47 18	
McKillop .....		180	8	15	120	18	60	30	10	1	Yes.		100 0 00	68 12 5	55 9	
Detroit .....																
{ Warrenville .....	1	250	18	4	112	14	45	50	130	1	Yes.		150 0 0	60 10 0	46 10	
{ Bayfield .....		200	13	2	78	8	3		80	1	Yes.		50 0 0	95 4 2	34 16	
{ Brucefield .....		60	2	2	40	6	20		80	1	Yes.			20 15 0	20 0	
{ Chatham .....		175	21		65	18	55		220	1	Yes.		17 10 0	82 4 7	63 10	
{ Tilbury .....		60			13	2								12 0 0	12 0	
{ Downie .....		100	4		98	9				1	No.		5 0 0			
{ St. Mary's .....		100	7		60	14				1	Yes.					
Ingersoll .....		40	2	1	28	2	35	14	200						30 0	
Vacancies — Ingersoll, Adelaide, Warwick, Goderich, Harwich.*	9	1885	100	37	922	118	527	124	2110	11			390 0 0	719 8 1	529 13	

## PRES'Y OF CANADA EAST.

Montreal .....		600			270							Yes.	743 0 0	569 0 0	200 0
New Glasgow .....	2	160	12	5	97	6	40		150		Yes.		66 17 6	60 0	
La Chute .....	3	200	11		50	8		20		1	Yes.		86 0 0	64 0	
Madrid .....		500	20	26	300	40	140	50	350	2	Yes.			125 0	
Huntingdon .....		400	30	9	137		200	57	600	2	Yes.		260 0 0	261 17 7	88 0
	5	1860	73	40	854	54	380	127	1100	5			1003 0 0	974 15 1	537 0

## PRESBYTERY OF DURHAM.

Whitby .....	2	560	9	9	153	13	80	8	340	2	Yes.		161 6 7	124 6	
Darlington .....	1	190	8	4	84	8	15	30	130	1	Yes.		94 1 5	80 0	
Clarke .....	1	400			195		110		300	2	Yes.		160 0 0	90 0	
Newton and Newcastle .....		375	12	9	106	7	130	40	338	2	Yes.		165 0 0	145 0	
Port Hope .....	1	450	32	5	262	13	129	57	450	2	Yes.		160 0 0	108 0	
Emily .....	2	300	18	4	154	10				3	Yes.		235 10 0	100 0	
Lindsay and Verulam .....	1	90	19		51	7	20	8		2	Yes.		4 0 0	97 19 11	35 0
Amherst Island .....	1	175	85	4	81	13	107		113	1	Yes.		7 10 3		
Mariposa .....	1	80	21		21	2									
Oakhills .....												1			
Frederickburgh .....												1			
Earnestown .....												1			
	10	2620	206	35	1107	73	591	143	1571	18			11 10 3	1073 18 0	682 6

## PRESBYTERY OF LANARK.

Smith's Falls .....	3	330	5	1	88	5	164	31	630	1	Yes.		31 5 0	104 19 6	87 10
Pakenham .....	2	180	14		87	6	60		206	2	Yes.		86 10 0	75 0	
	5	510	19	1	175	11	224	31	836	3			31 5 0	191 9 6	162 10

\* The Vacancies have not sent in any returns, except Ingersoll, which regularly pays £1 5s. per Sabbath's services; Harwick. The latter promises liberally in aid of the general funds.

The names of 75 Congregations appear in the above Table, but it will be observed that six of these give no statistics, while in the case of several others, these are incomplete. Forty-four "Stations within bounds" are returned—being an increase of four upon last year.

The "average attendance" throughout the Church amounts to 12,845, showing an increase upon the returns of the preceding year of 2,287; 930 Members have been added, and 374 removed, while the numbers in the previous return were, respectively, 719 and 276, showing a total increase of 546, and an increase over the foregoing year of 113. The total membership is 6,409; Baptism has been dispensed to 613, and 2,988 are in Religious Classes: 959 attend Prayer Meetings: "Volumes in Libraries" amount to 12,424, and the number of Churches is 76.

According to the Reports, "Congregational Debt" is £2,947 7s 4½d;

the "Total Income" has been £6,425 15s 5d; and it depended upon "Stipend" £4,050 12s. 10d., and on "£1,930 8s. 8½d. On these items severally there has been an increase: on that of "Income," for example, upwards of £1,200; and on "Church Stipend" upwards of £1,200; and on "Church Stipend" than £717.

For the "Theological Fund" there have been raised for the "Synod and Presbytery Funds," £54 2s. 1½d. Missions," £197 4s. 10d.; and for "General Missions" In these two last sums there has been a falling off. While the total income in the returns for the year 1851, gave an average of less than one pound to each congregation, it is just about one pound.



67 10 0	206 1 0½	125 0 0	48 12 8½	1 9 11½	1 12 6	14 12 3½	.....	.....	20 13 7
.....	67 15 7½	50 0 0	3 7 6	.....	.....	11 17 9	1 7 3	.....	1 3 1½
.....	43 5 10	32 10 0	.....	.....	.....	7 5 0	1 5 5	.....	2 10 0
.....	62 19 5	47 18 6	1 7 9	.....	.....	4 5 2	0 5 2	.....	4 17 11
100 0 00	68 12 5	55 9 11	.....	1 5 0	1 5 0	5 0 0	4 0 0	.....	1 12 6
.....	.....	.....	.....	.....	.....	.....	.....	.....	.....
150 0 0	60 10 0	46 10 0	11 10 0	.....	0 10 0	.....	.....	.....	2 6 0
50 0 0	95 4 2	34 16 8	60 0 0	.....	0 7 6	.....	.....	.....	.....
.....	20 15 0	20 0 0	.....	.....	0 5 0	.....	.....	.....	0 10 0
17 10 0	82 4 7	63 10 0	12 10 0	.....	.....	.....	.....	.....	6 4 7
.....	12 0 0	12 0 0	.....	.....	.....	.....	.....	.....	.....
5 0 0	.....	.....	.....	.....	.....	.....	.....	.....	.....
.....	.....	30 0 0	.....	.....	.....	.....	.....	.....	.....
.....	.....	.....	.....	.....	.....	.....	.....	.....	.....
390 0 0	719 8 1	529 13 1	137 7 11½	2 14 11½	4 0 0	43 0 2½	6 17 10	.....	39 11 8½
.....	.....	.....	.....	.....	.....	.....	.....	.....	.....
743 0 0	569 0 0	200 0 0	47 0 0	6 12 0	.....	34 0 0	5 0 0	15 0 0	123 0 0
.....	66 17 6	60 0 0	0 17 6	.....	.....	.....	6 0 0	.....	.....
.....	86 0 0	64 0 0	20 0 0	1 0 0	.....	0 16 3	.....	.....	0 3 9
.....	.....	125 0 0	.....	.....	0 5 0	.....	40 15 3	.....	22 0 0
260 0 0	261 17 7	88 0 0	149 18 0	.....	1 0 0	.....	4 0 0	.....	18 19 7
.....	.....	.....	.....	.....	.....	.....	.....	.....	.....
003 0 0	974 15 1	537 0 0	217 15 6	7 12 0	1 5 0	34 16 3	55 15 3	15 0 0	164 3 4
.....	.....	.....	.....	.....	.....	.....	.....	.....	.....
.....	161 6 7½	124 6 7½	.....	.....	5 0 0	11 6 4	9 15 0	.....	7 12 5
.....	94 1 5½	80 0 0	.....	2 0 0	1 0 0	2 5 0	2 10 0	.....	6 6 5½
.....	160 0 0	90 0 0	42 0 0	3 0 0	.....	6 0 0	22 0 0	.....	.....
.....	165 0 0	145 0 0	.....	.....	5 0 0	2 10 0	4 10 0	.....	8 0 0
.....	160 0 0	108 0 0	.....	2 0 0	6 0 0	.....	38 0 0	.....	4 10 0
.....	235 10 0	100 0 0	120 4 0	.....	1 5 0	.....	7 5 0	.....	3 0 0
4 0 0	97 19 11	35 0 0	43 7 8	.....	9 17 6	.....	.....	.....	9 14 9
7 10 3	.....	.....	.....	.....	.....	.....	.....	.....	.....
.....	.....	.....	.....	.....	.....	.....	.....	.....	.....
11 10 3	1073 18 0	682 6 7½	205 11 8	7 0 0	28 2 6	22 1 4	84 0 0	.....	39 3 7½
.....	.....	.....	.....	.....	.....	.....	.....	.....	.....
31 5 0	104 19 6½	87 10 0	.....	.....	.....	.....	12 10 0	.....	4 14 0
.....	86 10 0	75 0 0	.....	2 1 7	.....	1 8 7	.....	.....	8 0 0
.....	.....	.....	.....	.....	.....	.....	.....	.....	.....
31 5 0	191 9 6½	162 10 0	.....	2 1 7	.....	1 8 7	12 10 0	.....	12 14 0

£1 5s. per Sabbath's services; Harwich, 15s.; Goderich about 15s. (Stipend £11 18s.); Warwick and Adelaide, no definite

has been £6,425 15s 5d; and there has been expended £4,050 12s. 10d., and on "Church Property" On these items severally there has been a great increase of income, for example, upwards of £1050; on that of £1,200; and on "Church Property," more "General Fund" there have been raised £76 6s. 6½d.; and Presbytery Funds, £54 2s. 1½d.; for "Synod's" £10d.; and for "General Missions," £225 7s. 0½d. It seems there has been a falling off for the past year. The income in the returns for the year ending December, 1884, was less than one pound to each member, this year only 10s.

Let it be remarked, that these general results do not present the actual state of the Church; for, in many instances, full returns have not been made—a circumstance which is much to be regretted, and which it is highly desirable that Presbyteries should remedy in future; and again, we are able to compare only with a year, the returns for which were imperfect. Sufficient evidence, however, is afforded, that the United Presbyterian Church in Canada is prospering; and while we breathe the prayer, upon taking this retrospect, "Establish thou the work of our hands upon us, yea, the work of our hands establish thou it,"—let the success with which God has blessed, and is still blessing the labors of his servants, stimulate them to renewed zeal and activity in unfolding and bearing forward the banner, which God has given them to display in the cause of truth.



