

NWP  
971.15  
5955h

THE HOME OF THE  
BIG RED APPLE

Sunny  
**Summerland**

Okanagan Valley - British Columbia  
Canada

Offers You—

Health - Wealth  
Happiness



IN A  
Progressive - Prosperous  
Picturesque Community.

Presented by The Board of Trade, which will  
gladly send you particulars of many openings.

Write or Call—

SECRETARY, BOARD OF TRADE,  
SUMMERLAND, BRITISH COLUMBIA

## SUMMERLAND: WHERE IT IS

In south of famous Okanagan Valley, facing beautiful Okanagan Lake. Served North and South by C.P.R. Rail and Boat service, and East and West by Kettle Valley Railway. First town in Okanagan en route from Vancouver—a 12-hour run.

## SUMMERLAND: WHAT IT IS

One of finest residential districts in Canada.

Specialized Fruit and Vegetable growing District.

Shipper by car-load of Apples, Pears, Peaches, Plums, Apricots, Cherries, Tomatoes, Melons, Onions, Beans, Cucumbers, Peppers, and all products of temperate zone.

Shipper of more Express than any other place in British Columbia.

Winner of Medals and Diplomas at London, England, Spokane and Portland, U.S.A., in competition with fruits from all parts of the world.

Seat of Dominion Experimental Farm for Okanagan Valley, B.C.

## SUMMERLAND: WHAT IT HAS

Finest Climate in Canada.

Ideal Home Community among good English-speaking neighbours.

Modern Improvements for town and rural citizens.

Sportsman's Paradise.

Excellent Educational and Religious facilities.

Superior Local Organizations, touching all phases of Community life.

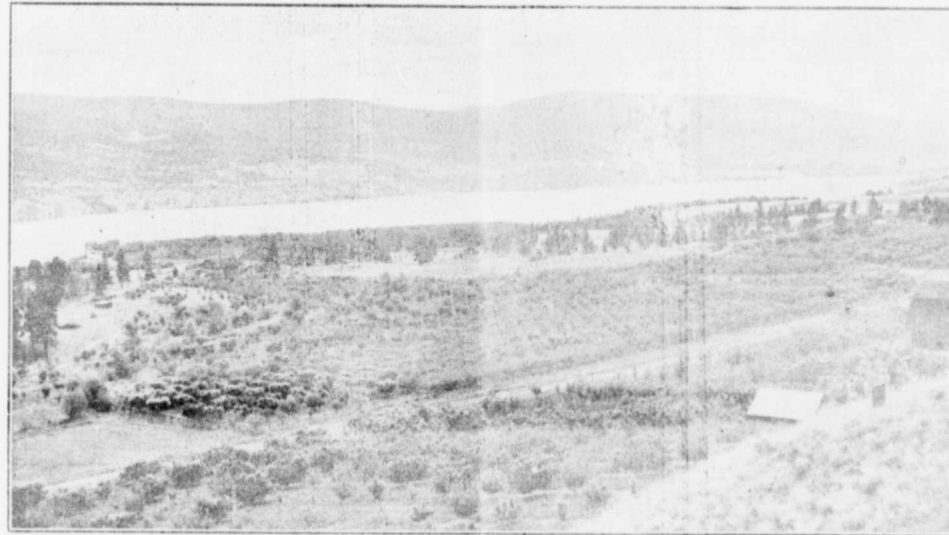
Great variety of soils capable of immense and varied production. Choice lands, with returns certain, and profitable remuneration for such returns.

**COME AND SEE IT.**

## Make Your Home in Sunny Summerland: You will love it

HOME is one of the dearest words to the human heart. All of us dream of the perfect home we hope, some day, to have. An environment of beauty and comfort in a community organized to minister to man's higher needs in harmony with 20th century complex civilization, are primary requisites of such a home.

SUMMERLAND has this environment. Its chief natural advantages are its charming climate, varied scenery and rich soils. Long sunny summers, short mild winters, and incomparable spring and fall seasons make an ideal variety. Changes of temperature are never violent, and severe storms unknown. From May 1st to October 15th we have no killing frosts, which mean much to the landowner's crops.



A SUMMERLAND ORCHARD AND LAKE SCENE

We average 2000 hours sunshine per year. Our rainfall is light, averaging 12 inches, but as we own our irrigation service, our crops are assured while our comfort is enhanced, and we do not have to contend with excessive humidity. Zero weather is a rare stranger, and our winters beyond comparison with the prairies and the East. Our altitude is 1150 to 2500 feet, and our climate very invigorating, and with its seasonal changes preferable to perpetual summers of southern latitudes.

The magnificence and variety of our scenery arouse admiring comments of all visitors. To our balmy climate are added skies of Italian blue, woodlands of Arcadian beauty, mountains and canyons of mighty grandeur, valleys and benches of changing contour, rippling and placid waters, myriad Orchards of luscious fruits, while crowning all are the happy homes of industrious men, beautiful women and merry children.

SUMMERLAND is a District of about 12,000 acres lying in valleys, slopes and benches, much of it in bearing Orchards and occupied, but we have room for many more people to share our rich resources.

SUMMERLAND grows FRUITS and VEGETABLES of all kinds, except tropical, in abundance and to perfection. In the Red Apple and in Apricots we excel. Growing high-class fruits and vegetables is our main industry, although mixed farming and other lines of ranching are carried on successfully.

SUMMERLAND appeals to sportsmen. Shooting, boating and fishing abound, while our fine roads and excellent scenery make motoring very popular.

SUMMERLAND owns up-to-date water, electric and telephone systems; and new-comers have nearly all modern conveniences and no pioneer hardships whatever.

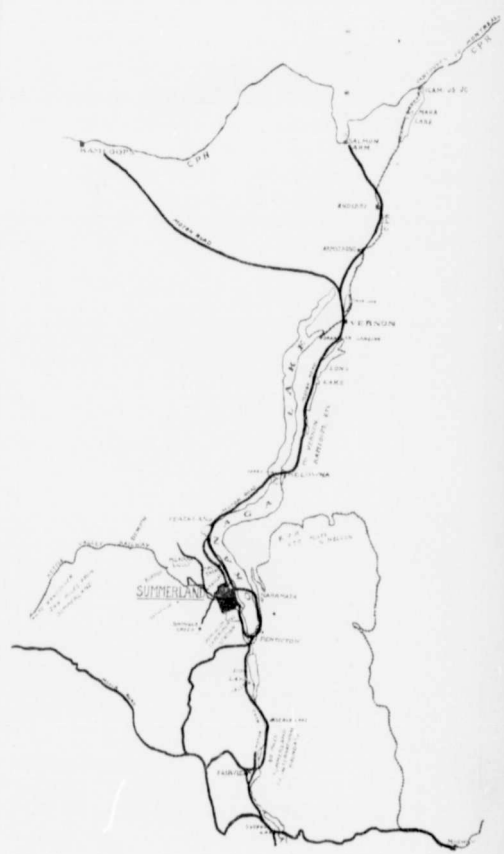
SUMMERLAND has progressive churches which serve Religious needs.

SUMMERLAND has a highly-organized and efficient Public and High School system, and the first Consolidated School in B.C.

SUMMERLAND has a fine Community spirit, as shown in its splendid local organizations of Fruit Growers' Union, Farmers' Institute, Women's Institute, Hospital Board, Social and Literary Clubs, Boy Scouts, and Agricultural Association. All these contribute to the social, literary, sporting, and vocational aspirations of its citizens.

SUMMERLAND believes that the spirit and principle of CO-OPERATION is best calculated to make a Community happy and prosperous, and it is practising this spirit and principle in all avenues of life.

**You are invited to Join Us Here.**



SUMMERLAND IS WITHIN EASY REACH  
FROM NORTH, SOUTH,  
EAST AND WEST.