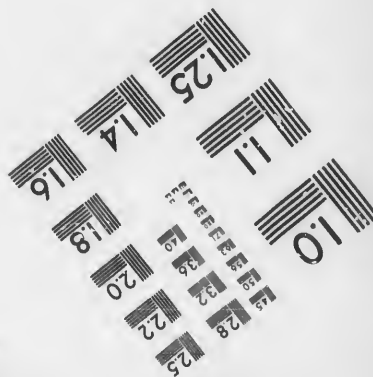
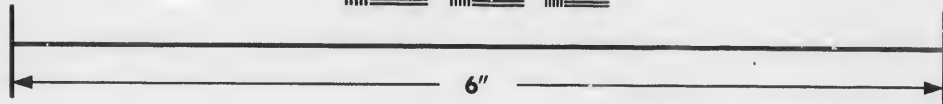
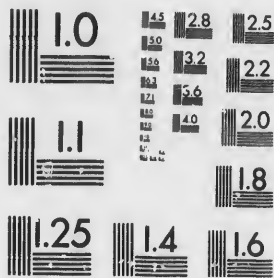


**IMAGE EVALUATION
TEST TARGET (MT-3)**



**Photographic
Sciences
Corporation**

23 WEST MAIN STREET
WEBSTER, N.Y. 14580
(716) 872-4503

**CIHM/ICMH
Microfiche
Series.**

**CIHM/ICMH
Collection de
microfiches.**



Canadian Institute for Historical Microreproductions / Institut canadien de microreproductions historiques

© 1987

Technical and Bibliographic Notes/Notes techniques et bibliographiques

The Institute has attempted to obtain the best original copy available for filming. Features of this copy which may be bibliographically unique, which may alter any of the images in the reproduction, or which may significantly change the usual method of filming, are checked below.

L'Institut a microfilmé le meilleur exemplaire qu'il lui a été possible de se procurer. Les détails de cet exemplaire qui sont peut-être uniques du point de vue bibliographique, qui peuvent modifier une image reproduite, ou qui peuvent exiger une modification dans la méthode normale de filmage sont indiqués ci-dessous.

- | | |
|--|--|
| <input type="checkbox"/> Coloured covers/
Couverture de couleur | <input type="checkbox"/> Coloured pages/
Pages de couleur |
| <input type="checkbox"/> Covers damaged/
Couverture endommagée | <input type="checkbox"/> Pages damaged/
Pages endommagées |
| <input type="checkbox"/> Covers restored and/or laminated/
Couverture restaurée et/ou pelliculée | <input type="checkbox"/> Pages restored and/or laminated/
Pages restaurées et/ou pelliculées |
| <input type="checkbox"/> Cover title missing/
Le titre de couverture manque | <input checked="" type="checkbox"/> Pages discoloured, stained or foxed/
Pages décolorées, tachetées ou piquées |
| <input type="checkbox"/> Coloured maps/
Cartes géographiques en couleur | <input type="checkbox"/> Pages detached/
Pages détachées |
| <input type="checkbox"/> Coloured ink (i.e. other than blue or black)/
Encre de couleur (i.e. autre que bleue ou noire) | <input checked="" type="checkbox"/> Showthrough/
Transparence |
| <input type="checkbox"/> Coloured plates and/or illustrations/
Planches et/ou illustrations en couleur | <input type="checkbox"/> Quality of print varies/
Qualité inégale de l'impression |
| <input type="checkbox"/> Bound with other material/
Relié avec d'autres documents | <input type="checkbox"/> Includes supplementary material/
Comprend du matériel supplémentaire |
| <input type="checkbox"/> Tight binding may cause shadows or distortion
along interior margin/
La reliure serrée peut causer de l'ombre ou de la
distorsion le long de la marge intérieure | <input type="checkbox"/> Only edition available/
Seule édition disponible |
| <input type="checkbox"/> Blank leaves added during restoration may
appear within the text. Whenever possible, these
have been omitted from filming/
Il se peut que certaines pages blanches ajoutées
lors d'une restauration apparaissent dans le texte,
mais, lorsque cela était possible, ces pages n'ont
pas été filmées. | <input type="checkbox"/> Pages wholly or partially obscured by errata
slips, tissues, etc., have been refilmed to
ensure the best possible image/
Les pages totalement ou partiellement
obscurcies par un feuillet d'errata, une pelure,
etc., ont été filmées à nouveau de façon à
obtenir la meilleure image possible. |
| <input checked="" type="checkbox"/> Additional comments: [Printed ephemera] 1 sheet (verso blank)
Commentaires supplémentaires: | |

This item is filmed at the reduction ratio checked below/
Ce document est filmé au taux de réduction indiqué ci-dessous.

10X	14X	18X	22X	26X	30X
<input type="checkbox"/>	<input type="checkbox"/>	<input type="checkbox"/>	<input checked="" type="checkbox"/>	<input type="checkbox"/>	<input type="checkbox"/>
12X	16X	20X	24X	28X	32X

The copy filmed here has been reproduced thanks to the generosity of:

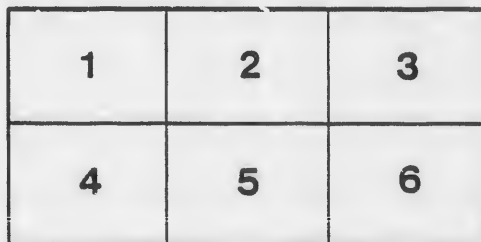
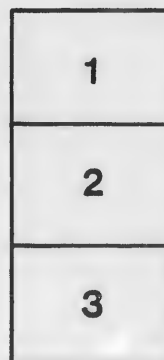
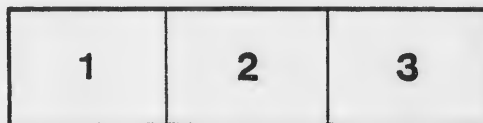
D. B. Weldon Library
University of Western Ontario
(Regional History Room)

The images appearing here are the best quality possible considering the condition and legibility of the original copy and in keeping with the filming contract specifications.

Original copies in printed paper covers are filmed beginning with the front cover and ending on the last page with a printed or illustrated impression, or the back cover when appropriate. All other original copies are filmed beginning on the first page with a printed or illustrated impression, and ending on the last page with a printed or illustrated impression.

The last recorded frame on each microfiche shall contain the symbol \rightarrow (meaning "CONTINUED"), or the symbol ∇ (meaning "END"), whichever applies.

Maps, plates, charts, etc., may be filmed at different reduction ratios. Those too large to be entirely included in one exposure are filmed beginning in the upper left hand corner, left to right and top to bottom, as many frames as required. The following diagrams illustrate the method:



L'exemplaire filmé fut reproduit grâce à la générosité de:

D. B. Weldon Library
University of Western Ontario
(Regional History Room)

Les images suivantes ont été reproduites avec le plus grand soin, compte tenu de la condition et de la netteté de l'exemplaire filmé, et en conformité avec les conditions du contrat de filmage.

Les exemplaires originaux dont la couverture en papier est imprimée sont filmés en commençant par le premier plat et en terminant soit par la dernière page qui comporte une empreinte d'impression ou d'illustration, soit par le second plat, selon le cas. Tous les autres exemplaires originaux sont filmés en commençant par la première page qui comporte une empreinte d'impression ou d'illustration et en terminant par la dernière page qui comporte une telle empreinte.

Un des symboles suivants apparaîtra sur la dernière image de chaque microfiche, selon le cas: le symbole \rightarrow signifie "A SUIVRE", le symbole ∇ signifie "FIN".

Les cartes, planches, tableaux, etc., peuvent être filmés à des taux de réduction différents. Lorsque le document est trop grand pour être reproduit en un seul cliché, il est filmé à partir de l'angle supérieur gauche, de gauche à droite, et de haut en bas, en prenant le nombre d'images nécessaire. Les diagrammes suivants illustrent la méthode.

PROCLAMATION

EAST RIDING OF THE COUNTY OF YORK

TO WIT:

Public notice is hereby given to the Electors of the East Riding of the County of York, in pursuance of the Statute in that behalf made, and to Her Majesty's Writ to me directed, bearing date the 10th day of the month of January, A.D. 1832, that a Poll of the said Electors at the hustings, to be held at the Court House, near the west end of Kensington Street, on the

22ND DAY OF THE MONTH OF JANUARY

At Eleven o'clock in the forenoon

for the purpose of electing a person to sit in the House of Commons, for the Dominion of the County of York, in the case a Poll be demanded and allowed by the Statute prescribed, such Poll will be opened

29th DAY OF THE MONTH OF JANUARY

In the Townships of London, Westminster, and the

AMATEUR!

THE COUNTY OF MIDDLESEX.

Whereby given to the Electors
County of Middlesex, that in obedience
as directed, and bearing date the Second
of January, A.D. 1874, I require the presence
of the Electors, in the Township of London,
St. Martin's Bridge, and near the County

MONTH OF JANUARY INST.

to meet in the Forenoon,

to elect a person to represent them in the
Parliament of the Dominion of Canada. And, that in
the manner and allowed in the manner by Law
the Poll shall be opened on the

MONTH OF JANUARY, INSTANT,

at the Town Hall, Westminster, North Dorchester, and

PRINTED BY THE UNIVERSITY PRESS

In the Townships of London, Westminster and West Nissouri, in the several subdivisions thereof, the Townships have been divided by By-laws thereof for Electoral purposes. It is hereby required to take notice and to

Given under my hand, at London, the 29th day of January, in the year A.D. 1874.

WM.

BOUNDARY OF ELECTORAL SUBDIVISIONS

NORTH DORCHESTER.

FIRST DIVISION.—That Sub-Division number one be composed of all that part of this Township lying north of the River Thames.

SECOND DIVISION.—That number two be composed of Concessions A, B and the first south of the river.

THIRD DIVISION.—That number three be composed of lots thirteen to twenty-four inclusive in Concessions two, three, four, five and six, south of the river, and

FOURTH DIVISION.—That number four be composed of lots A, B and numbers one to twelve inclusive in Concessions number two, three, four, five and six, south of the River Thames.

WEST NISSOURI.

FIRST DIVISION.—The first, second, third and the west half of the fourth concession, from the southern limit of the township, to the line between lots 16 and 19.

SECOND DIVISION.—The east half of the fourth concession, the 5th, 6th and 7th concessions from the southern limit of the township to the line between lots 18 and 19.

THIRD DIVISION.—The 1st, 2nd and 3rd, and the west half of the 4th concessions, from the line between lots 18 and 19, to the northern boundary of the township.

FOURTH DIVISION.—The east half of the 4th concession, the 5th, 6th and 7th concessions from the line between lots 18 and 19 to the northern boundary of the township.

LONDON.

FIRST DIVISION.—No. 1, comprising the whole of Petersville and that part of St. George's Ward bounded south by the River Thames, on the west by the town line, on the east by the North Branch, and on the north by the 3rd con. line.

SECOND DIVISION.—No. 2, From the third concession line north to

the centre of the seventh concession bounded west east by the proof line.

THIRD DIVISION.—No. 3, From the centre of the seventh concession to the centre of the twelfth concession bounded west east by the proof line.

FOURTH DIVISION.—No. 4, From the centre of the twelfth concession to the town line north, bounded west by the town proof line.

FIFTH DIVISION.—No. 5, The whole of the north and south, the whole of the lots on concession number two, the whole of the lots in the south half of concession number three, 5, 6, 7, and 8, north half concession C, St. Laurence Ward.

SIXTH DIVISION.—No. 6. Lots 9, 10, 11, 12, 13, 14, 15, 16, 17, 18, 19, 20, 21, 22, 23, 24, 25, 26, 27, 28, 29, 30, 31, 32, 33, 34, 35, 36, 37, 38, 39, 40, 41, 42, 43, 44, 45, 46, 47, 48, 49, 50, 51, 52, 53, 54, 55, 56, 57, 58, 59, 60, 61, 62, 63, 64, 65, 66, 67, 68, 69, 70, 71, 72, 73, 74, 75, 76, 77, 78, 79, 80, 81, 82, 83, 84, 85, 86, 87, 88, 89, 90, 91, 92, 93, 94, 95, 96, 97, 98, 99, 100, Concession C, the whole of lots north and south of the line between lots 18 and 19, and the whole of the south half of the Sec. Laurence Ward.

SEVENTH DIVISION.—No. 7. From the centre of the fourth concession, to the centre of the Fifth Concession, to the Town Line, and west by the Proof Line and Adjoining Property.

EIGHTH DIVISION.—No. 8. From the centre of the Tenth Concession, bounded west by the Town Line east, and the Proof Line.

NINTH DIVISION.—No. 9. From the centre of the Tenth Concession to the centre of the Thirteenth Concession, to the Town Line east, and the Proof Line east.

TENTH DIVISION.—No. 10. From the centre of the Thirteenth Concession to the Town Line north, and from the centre of the Thirteenth Concession to the Proof Line.

WESTMINSTER.

FIRST DIVISION.—Number 1.—To be bounded

MONTH OF JANUARY, INSTANT,

n, Westminster, North Dorchester, and
ral subdivisions into which the said
led by By-laws of the Municipal Coun-
urposes. Of all which every person is
vice and to govern himself accordidgly.

London, this Tenth day of the month
A.D. 1874.

W. M. GLASS, Returning Officer.

RAL SUBDIVISIONS REFERRED TO ABOVE :

seventh concession bounded west by the town line and
line.

CON—No. 3. From the centre of the seventh concession
the twelfth concession bounded west by the town line and
line.

CON—No. 4. From the centre of the twelfth concession
north, bounded west by the town line and east by the

CON—No. 5. The whole of the lots on concession A,
the whole of the lots on concession B, north and south,
lots in the south half of concession C, and lots 1, 2, 3, 4,
th half concession C, St. Laurence Ward.

CON—No. 6. Lots 9, 10, 11, 12, north half of
the whole of lots north and south of the First Conces-
sion, and the whole of the south half of the Second Concession, St.

DIVISION.—No. 7. From the centre of the Second
the centre of the Fifth Concession, bounded east by the
west by the Proof Line and Adelaide street.

DIVISION.—No. 8. From the centre of the Fifth to
the Tenth Concession, bounded east by the Town
the Proof Line.

DIVISION.—No. 9. From the centre of the Tenth
the centre of the Thirteenth Concession, bounded by
and the Proof Line east.

DIVISION.—No. 10. From the centre of the Thirteenth
the Town Line north, and from the Town Line east to

eastern boundary of the township, on the north by the River Thames, on
the west by the side lines between lots 13 and 19, in the broken front and
first and second concessions, and by the side lines between lots 12 and 13,
in the third and fourth concessions, and on the south by the allowance for
road between the fourth and fifth concessions.

SECOND DIVISION—Number 2.—To be bounded on the east by the
western boundary of No. 1, on the north by the River Thames, on the west
by the Wortley road, and the side lines between lots 2, 7 and 23, in the first
and second concessions, and the side lines between lots 16 and 17 in the
third and fourth concessions, and on the south by the allowance for road
between the 4th and fifth concessions.

THIRD DIVISION—Number 3.—To be bounded on the east by the
western boundary of No. 2, on the north by the River Thames, on the west
by the side lines between lots 36 and 37, in the broken front and first con-
cession, and by the Bostwick line, and on the south by the allowance for
road between the 4th and 5th concessions.

FOURTH DIVISION—Number 4.—To be bounded on the east by the
western boundary of No. 3, on the north by the River Thames, on the west
by the western boundary of the township, and on the south by the side
lines between lots 6 and 7 in the Gore, and between lots 68 and 69 east and
west of Talbot road.

FIFTH DIVISION.—To be bounded on the north by the southern
boundary of number four, and the allowance for road between the fourth
and fifth Concessions, on the west by the western boundary of the Town-
ship, on the south by the southern boundary of the Township, and on the
east by the side-lines between lots 13 and 19 in the 5th, 6th, 7th, 8th and
9th Concessions, and the Bostwick line between front and rear of the 4th
Concession.

SIXTH DIVISION.—To be bounded on the west by the eastern bound-
ary of number 5, on the south by the southern boundary of the Town-
ship, on the east by the eastern boundary of the Township, and on the
north by the allowance for road between the 4th and 5th Concessions.

WESTMINSTER.

CON—Number 1.—To be bounded on the east by the

