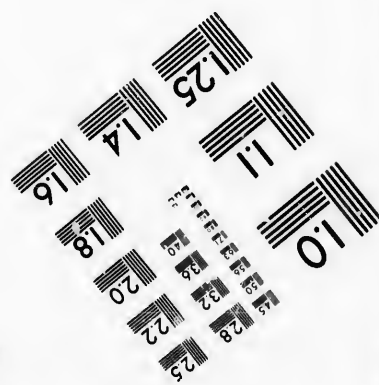
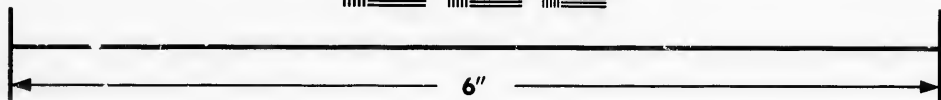
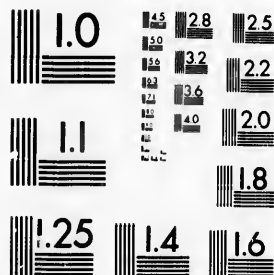


**IMAGE EVALUATION
TEST TARGET (MT-3)**



**Photographic
Sciences
Corporation**

23 WEST MAIN STREET
WEBSTER, N.Y. 14580
(716) 872-4503

**CIHM/ICMH
Microfiche
Series.**

**CIHM/ICMH
Collection de
microfiches.**



Canadian institute for Historical Microreproductions / Institut canadien de microreproductions historiques

© 1987

Technical and Bibliographic Notes/Notes techniques et bibliographiques

The Institute has attempted to obtain the best original copy available for filming. Features of this copy which may be bibliographically unique, which may alter any of the images in the reproduction, or which may significantly change the usual method of filming, are checked below.

L'Institut a microfilmé le meilleur exemplaire qu'il lui a été possible de se procurer. Les détails de cet exemplaire qui sont peut-être uniques du point de vue bibliographique, qui peuvent modifier une image reproduite, ou qui peuvent exiger une modification dans la méthode normale de filmage sont indiqués ci-dessous.

- Coloured covers/
Couverture de couleur
- Covers damaged/
Couverture endommagée
- Covers restored and/or laminated/
Couverture restaurée et/ou pelliculée
- Cover title missing/
Le titre de couverture manque
- Coloured maps/
Cartes géographiques en couleur
- Coloured ink (i.e. other than blue or black)/
Encre de couleur (i.e. autre que bleue ou noire)
- Coloured plates and/or illustrations/
Planches et/ou illustrations en couleur
- Bound with other material/
Relié avec d'autres documents
- Tight binding may cause shadows or distortion
along interior margin/
La reliure serrée peut causer de l'ombre ou de la
distorsion le long de la marge intérieure
- Blank leaves added during restoration may
appear within the text. Whenever possible, these
have been omitted from filming/
Il se peut que certaines pages blanches ajoutées
lors d'une restauration apparaissent dans le texte,
mais, lorsque cela était possible, ces pages n'ont
pas été filmées.
- Additional comments:
Commentaires supplémentaires:

- Coloured pages/
Pages de couleur
- Pages damaged/
Pages endommagées
- Pages restored and/or laminated/
Pages restaurées et/ou pelliculées
- Pages discoloured, stained or foxed/
Pages décolorées, tachetées ou piquées
- Pages detached/
Pages détachées
- Showthrough/
Transparence
- Quality of print varies/
Qualité inégale de l'impression
- Includes supplementary material/
Comprend du matériel supplémentaire
- Only edition available/
Seule édition disponible
- Pages wholly or partially obscured by errata
slips, tissues, etc., have been refilmed to
ensure the best possible image/
Les pages totalement ou partiellement
obscurcies par un feuillet d'errata, une pelure,
etc., ont été filmées à nouveau de façon à
obtenir la meilleure image possible.

This item is filmed at the reduction ratio checked below/
Ce document est filmé au taux de réduction indiqué ci-dessous.

10X	14X	18X	22X	25X	30X
<input type="checkbox"/>	<input type="checkbox"/>	<input type="checkbox"/>	<input type="checkbox"/>	<input type="checkbox"/>	<input checked="" type="checkbox"/>
12X	16X	20X	24X	28X	32X

The copy filmed here has been reproduced thanks to the generosity of:

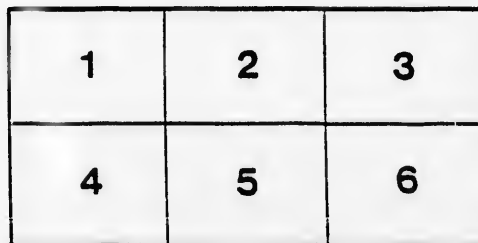
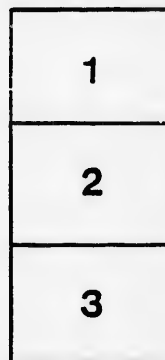
Archives of Ontario
Toronto

The images appearing here are the best quality possible considering the condition and legibility of the original copy and in keeping with the filming contract specifications.

Original copies in printed paper covers are filmed beginning with the front cover and ending on the last page with a printed or illustrated impression, or the back cover when appropriate. All other original copies are filmed beginning on the first page with a printed or illustrated impression, and ending on the last page with a printed or illustrated impression.

The last recorded frame on each microfiche shall contain the symbol \rightarrow (meaning "CONTINUED"), or the symbol ∇ (meaning "END"), whichever applies.

Maps, plates, charts, etc., may be filmed at different reduction ratios. Those too large to be entirely included in one exposure are filmed beginning in the upper left hand corner, left to right and top to bottom, as many frames as required. The following diagrams illustrate the method:



L'exemplaire filmé fut reproduit grâce à la générosité de:

Archives of Ontario
Toronto

Les images suivantes ont été reproduites avec le plus grand soin, compte tenu de la condition et de la netteté de l'exemplaire filmé, et en conformité avec les conditions du contrat de filmage.

Les exemplaires originaux dont la couverture en papier est imprimée sont filmés en commençant par le premier plat et en terminant soit par la dernière page qui comporte une empreinte d'impression ou d'illustration, soit par le second plat, selon le cas. Tous les autres exemplaires originaux sont filmés en commençant par la première page qui comporte une empreinte d'impression ou d'illustration et en terminant par la dernière page qui comporte une telle empreinte.

Un des symboles suivants apparaîtra sur la dernière image de chaque microfiche, selon le cas: le symbole \rightarrow signifie "A SUIVRE", le symbole ∇ signifie "FIN".

Les cartes, planches, tableaux, etc., peuvent être filmés à des taux de réduction différents. Lorsque le document est trop grand pour être reproduit en un seul cliché, il est filmé à partir de l'angle supérieur gauche, de gauche à droite, et de haut en bas, en prenant le nombre d'images nécessaire. Les diagrammes suivants illustrent la méthode.



VOTERS' LIST---1894.

TOWNSHIP OF GOLBORNE.

CLERK'S CERTIFICATE.

I, F. W. McDONAGH, Clerk of the Municipality of the Township of Colborne, in the County of Huron, do hereby certify that Parts One and Three of the within List constitute a correct list for the year 1894, of all persons appearing by the last revised Assessment Roll of the said Municipality to be entitled to vote at Elections for members of the Legislative Assembly, and that Parts One and Two constitute a correct list for said year, of all persons appearing on the said Roll to be entitled to vote at Municipal Elections, in the said Municipality.

And I hereby call upon all electors to examine the said lists, and if any omissions or other errors are perceived therein, to take immediate proceedings to have the said errors corrected according to law

Dated this 20th day of August, 1894.

F. W. McDONAGH, Township Clerk, Carlow.

CERTIFICATE OF NO COMPLAINTS.

F. W. McDONAGH, Clerk of the Municipality of the Township of Colborne, having certified under his hand that no complaints respecting the List of Voters for said Municipality for the year 1894 had been received by him within thirty days after the first posting of the same, and on application of the said Clerk, I, ISAAC FRANCIS TOMS, Esq., Judge of the County Court of the County of Huron, in pursuance of the provisions of the Ontario Voters' List Act, 1889, certify that the annexed printed List of Voters, being one of the copies received by me from the said Clerk, under Section 5 of the said Act, is the revised List of Voters for the said Municipality for the year 1894.

Given under my hand and seal, at Goderich, in the said County, this..... day of..... 1894.

CERTIFICATE OF JUDGE.

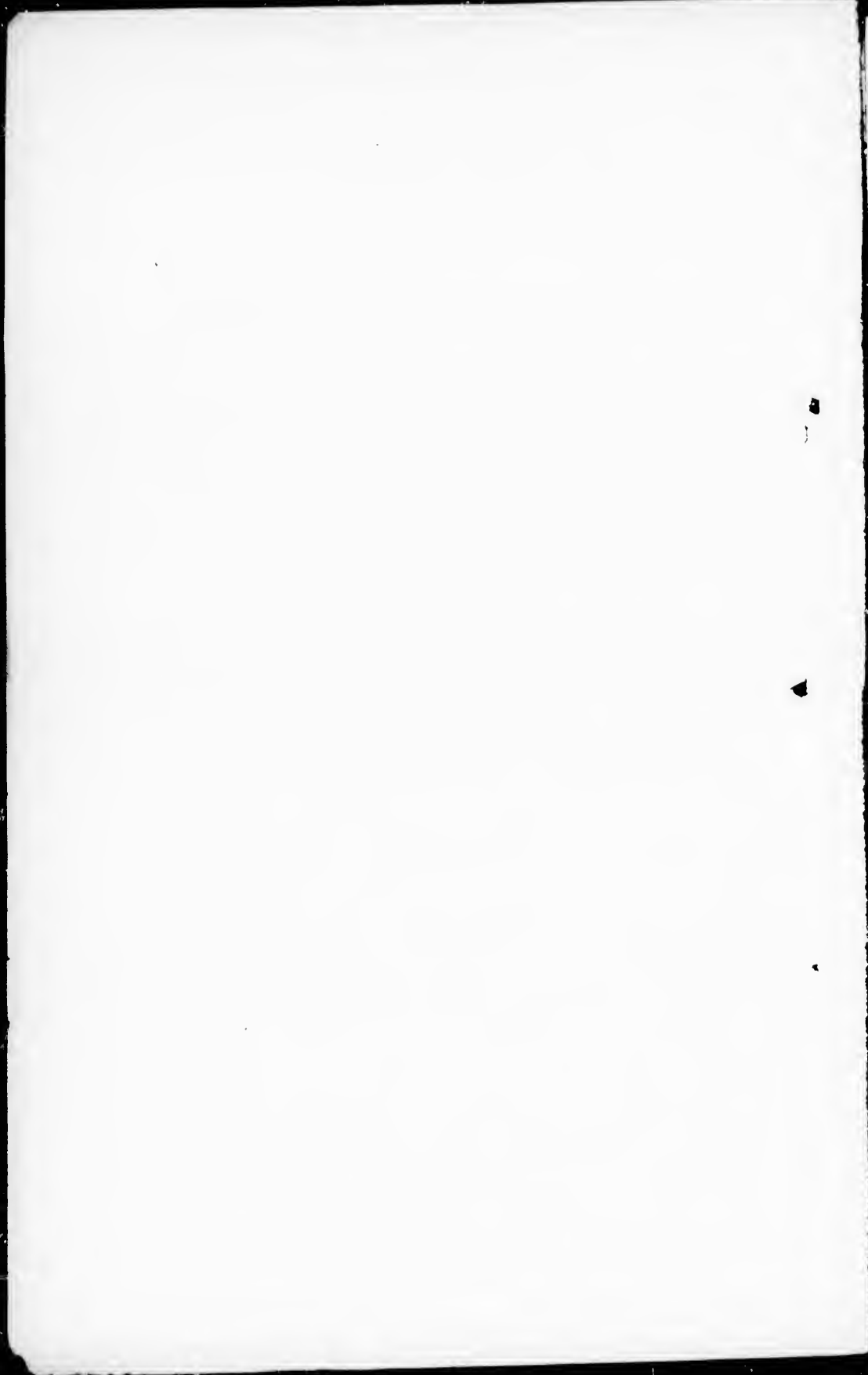
I, ISAAC FRANCIS TOMS, Esq., Judge of the County Court of the County of Huron, pursuant to Section 17 of the Ontario Voters' List Act, 1889, do hereby certify that the annexed is a correct copy of the List of Voters for the year 1894, received by me from the Clerk of the Municipality of the Township of Colborne, according to my revision and correction thereof, pursuant to the provisions of the said Act.

Dated at the..... of..... in the said County, this..... day of..... 1894.

The Sheriff shall, immediately upon receipt of his copies, cause one of them to be posted up in a conspicuous place in the Court House; the Clerk of the Peace, upon receipt of his copies, shall cause one of them to be posted in a conspicuous place in his office; every Public or Separate School Head Master or Mistress shall in a like manner put up one on the door of the School House; and every Postmaster shall post up one of his copies in his post office.

GODERICH, ONT. :

PRINTED AT THE STAR BOOK AND JOB PRINTING OFFICE, WEST STREET.



VOTERS' LIST.

MUNICIPALITY OF THE TOWNSHIP OF GOLBORNE.

SCHEDULE OF POST OFFICES:

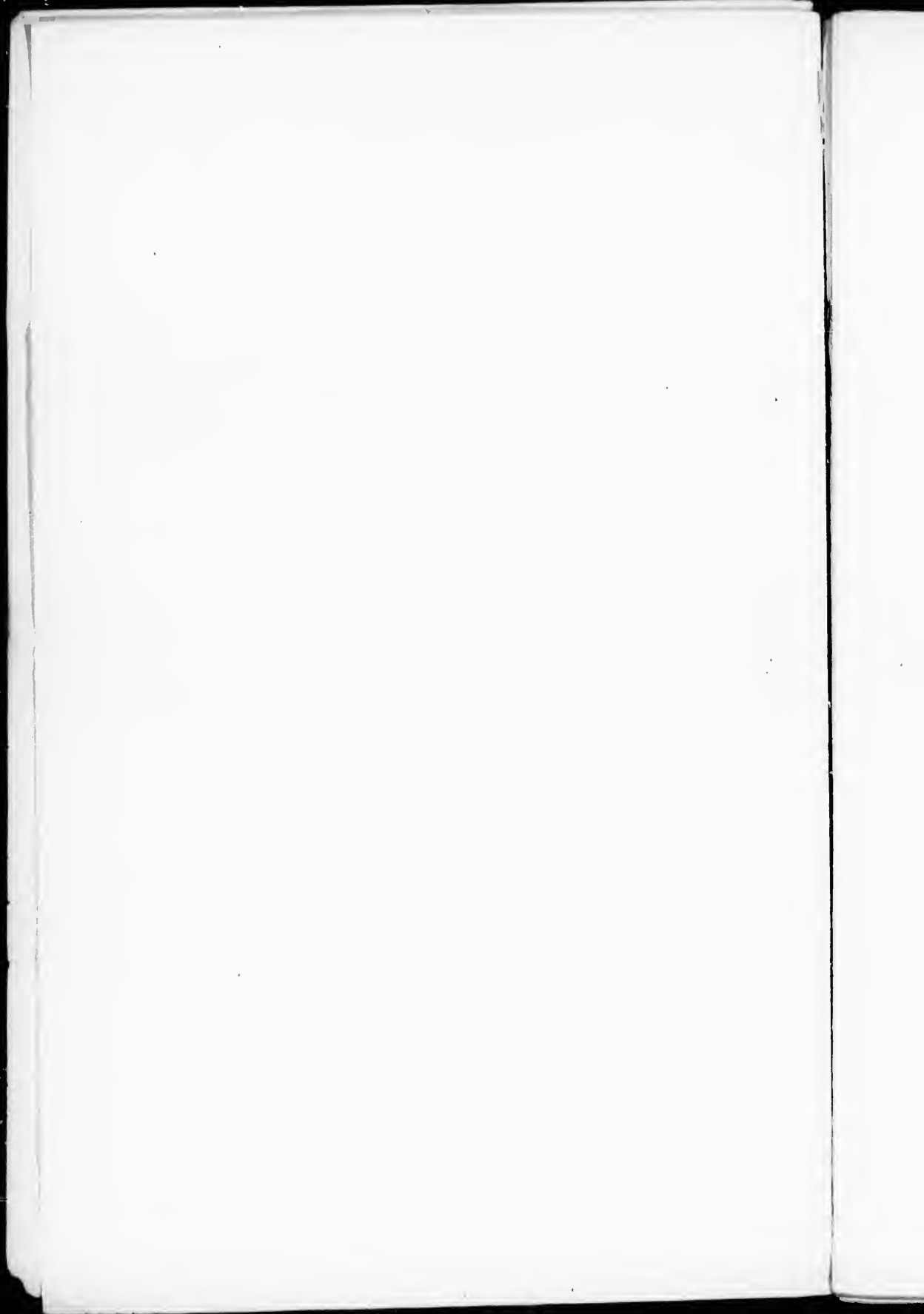
1, BENMILLER; 2, SALTFORD; 3, CARLOW; 4, DUNLOP; 5, NILE; 6, AUBURN; 7, GODERICH; 8, SHEPPARDTON; 9, HOLMESVILLE.

POLLING SUB-DIVISION No. 1.

Comprising Maitland Concession, Bunmiller Village, the Falls Reserve, Concessions 1, 2, 3 and 4 in the Eastern Division and the following Lots, viz: 5, 6, 7 and 8 on the 1st, 2nd, 3rd and 4th Concessions in the Western Division, with Lot 9 on the 3rd Concession.

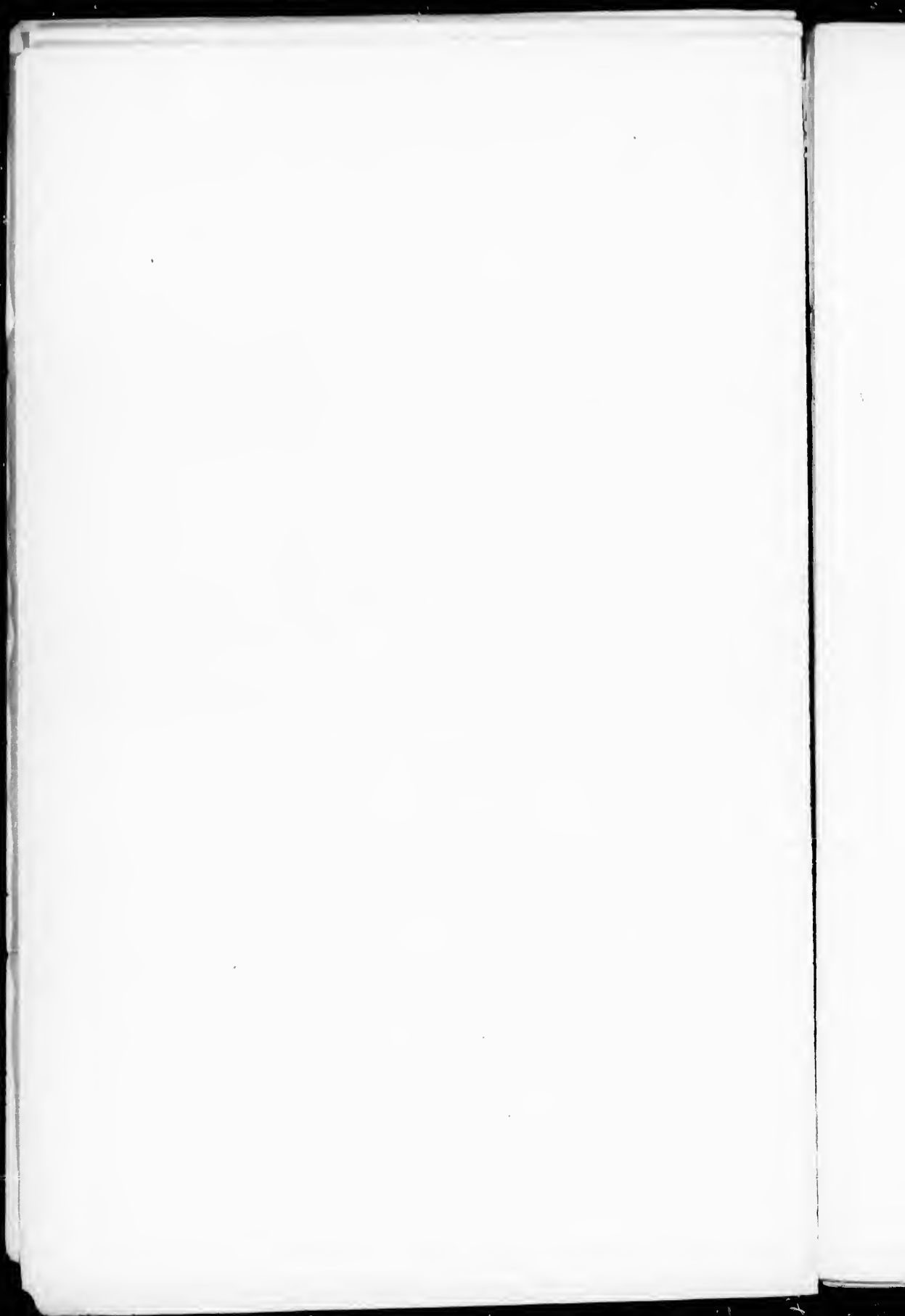
PART I.—List of Persons Entitled to Vote at Elections to the Legislative Assembly and Municipal Elections.

No. on Roll	JUROR.	NAME.	No. of Lot, or Part of Lot.	CON- OR FRANCH.	Owner, Tenant, Farmer's Son, In- come, or Wage Earner	C	S
17	j	Askwith, William	Pt 11	4 E D	M F and O	1	
9	j	Allen, Joshua	Part 26 and 26	M C	M F and O	1	
7	j	Ashton, Thomas	Part 8	2 W D	M F and T	1	
20	j	Allen, William	S & 5	3 E D	M F and O	1	
4	j	Allen, William	12	M C	M F and O	1	
6	j	Allen, Wesley G.	12	M C	M F and O	1	
5	j	Allen, Albert E.	12	M C	M F and O	1	
18	j	Allen, Luther	W & 7	3 E D	M F and O	1	
19	j	Allen, Richard	W & 7	4 E D	M F and O	2	
21	j	Allen, John	N & 5	3 E D	M F and O	2	
531	j	Anderson, Thomas	22	M C	M F and O	6	
65	j	Baechler, Xavier, sr.	Lot 8	Part F R	M F and O	1	
23	j	Butt, Stephen	Part 6, 7	M C	M F and O	1	
25	j	Baer, Nathaniel	15	M C	M F and O	9	
52	j	Blake, William	13, 14	1 E D	M F and O	1	
26	j	Breen, John	14	2 E D	M F and T	1	
42	j	Butt, Henry	Part 5 and 6	3 E D	M F and O	1	
28	j	Bogio, Alexander	Part 4, 5 and 6	3 W D	M F and O	7	
68	j	Cronyn, Patrick	Part 28, 29	M C	M F and T	1	
94	j	Colinson, William	11	3 E D	M F and O	2	
112	j	Durst, William C.	Part 27	M C	M F and O	1	
118	j	Dewar, Arch. M.	Part 1	1 E D, B N V	M F and T	1	
126	j	Elsley, Jacob	4	2 W D	M F and T	1	
15	j	Edmanson, A. E.	E & 10	4 E D	M F and T	6	
127	j	Edward, G. B.	Part 5 and 6	3 & 4, Con. W D	M F and O	2	
137	j	Fisher, Isaac	6	1 W D	M F and O	7	
136	j	Fisher, Joseph, jr.	6	2 W D	M F and O	7	
138	j	Fisher, Jacob	7	2 W D	M F and T	7	
162	j	Fisher, William	Part 7, 8	M C	M F and T	1	
174	j	Fisher, Henry	Part 1	1 E D, B M V	M F and T	1	
171	j	Fisher, Amos	3	1 E D	M F and O	1	
172	j	Fisher, Herbert	3	2 E D	M F and O	1	
134	j	Fisher, Charles	6	2 E D	M F and O	1	
135	j	Fisher, Peter, sr.	6	2 E D	M F and O	1	
161	j	Fisher, Peter, jr.	31	M C	M F and O	1	
164	j	Fisher, Valentine	Part 26, 27	M C	M F and O	1	
165	j	Foster, W. B.	19, pt 20	M C	M F and O	9	
166	j	Flick, Jacob	E & 30	M C	M F and O	1	
167	j	Flick, Michael	Part 28, 29	M C	M F and O	1	



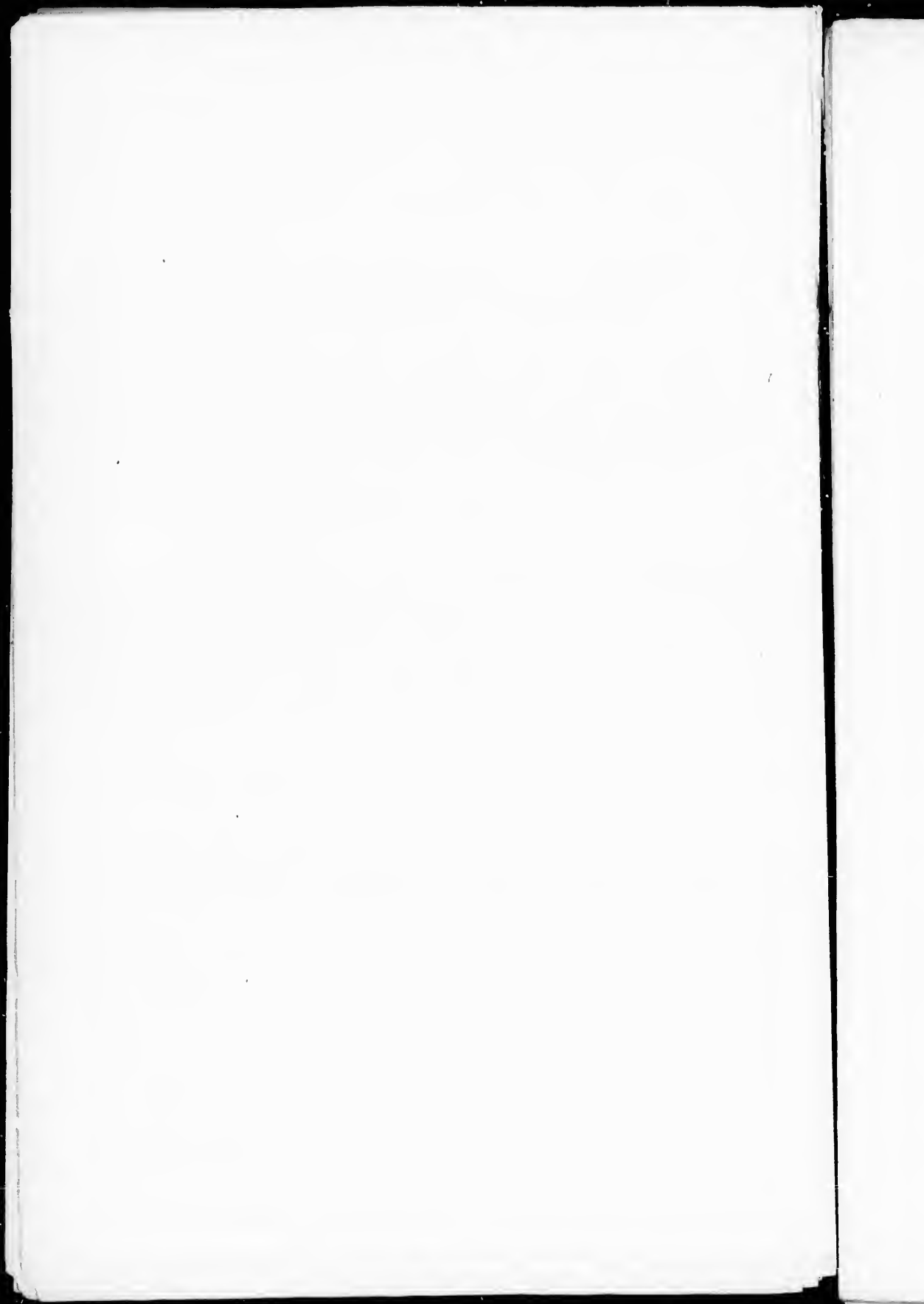
Polling Sub-Division No. 1.

No. on Roll	Jrno.	NAME	No. of Lot or Part of Lot.	CON OR STREET.	Owner, Tenant Farmer's Serv. In Home, or Wage Earner.	P. C.
170		Fisher, Seth, jr.	7	1 E D	m f and h	1
173	J	Fisher, Edward, J	3	2 E D	m f and o	1
149		Fisher, Seth, sr.	Pt 11	1 E D	m f and o	1
183	J	Ferriby, George	Parts 8, 11, 15 and 16	B M V	m f and t	1
168		Fisher, Isaac	9	2 E D	m f and h	1
200	J	Gledhill, Thomas	Part 20, 21, 1, 2	2 E D M C	m f and o	1
180	J	Gledhill, Jesse	Pt 1	1,2 E D B M V	m f and o	1
181	J	Gledhill, J. W.	Pt 1	1,2 E D B M V	m f and o	1
182	J	Good, Thomas	S ½ 6 and 49, 10 B V	5 E D	m f and t	1
208	J	Good, Wm. II	Part 8, 9	3 E D	m f and o	1
202	J	Good, Edward	Pt 10	3 E D	m f and o	1
69	J	Gim, Peter	Pt 28, 29	M C	m f and o	1
190	J	Gardner, Thos.	3, W ½ 4	3 E D	m f and o	7
27	J	Ginder, Chas.	14	2 E D	m f and o	1
219	J	Hill, William	9, 9	1, 2 E D	m f and o	1
252	J	Hamilton, John	13, 14, 15	1 E D, B M V	m f and o	1
228	J	Heddel, Andrew	Part F R	1 W D	m f and o	1
224	J	Heddel, Sammel, sr.	Part F R	1 W D	m f and o	1
251	J	Habbel, George	Pt 10	M C	m f and o	1
216	J	Holtzhansen, Mike	Pt 11	2 E D	m f and o	1
217	J	Halliday, Andrew	15	2 E D	m f and o	1
218	J	Halliday, John	Part 13, 14, 15	3 E D	m f and o	1
225	J	Hart, Samuel	Part 8	2 W D	m f and o	1
220	J	Hunter, John W.	5	2 E D	m f and t	1
261		Honerby, Thomas	Pt 7, 8	M C	m f and h	1
252		Hart Samuel, jr.	Pt 8	2 W D	m f and o	1
272	J	Jenkins, James	5	1 W D	m f and t	2
269	J	Jenkins, John	4	6 W D	m f and o	2
270	J	Jenkins, Edward	5	2 W D	m f and o	2
271	J	Jenkins, Isaac	5	2 W D	m f and o	2
267	J	Jewel, Richard	pt 6, pt 3, 4, W ½ 7	2, 3 W D	m f and o	1
266	J	Jewell, James	Part 1	1 E D	m f and o	1
283	J	Johns, Nathan	9, E ½ 8	4 E D	m f and o	1
268	J	Jewell, Melvin	pt 7	3 W D	m f and o	1
286	J	Kurschinsk, Fred	Part 10	M C	m f and o	1
287	J	Keruinghan, John	13	2 E D	m f and o	1
288	J	Keruinghan, J. N.	E ½ 12	2 E D	m f and o	1
900	J	Long, James	N ½ 6, pt 1 and 2	6, 2 E D	m f and o	1
901	J	Larnie, Fred	pt 1, 2	2 E D	m f and o	1
918	J	Long, William	E ½ 8, 8	1 W D	m f and o	1
916	J	Levy, John	pt 8 and 9	3 E D	m f and t	1
420	J	Mugford, John	S pt 2	4 E D	m f and o	1
422	J	Mugford, Albert	S ½ 1	4 E D	m f and o	1
414	J	Moore, William	S ½ N ½ 6	3 E D	m f and o	1
317	J	Maedel, William	6	B M V	m f and o	1
418	J	McCorvie, Neil	Part 9	3 W D	m f and o	1
412	J	McCorvie, Duncan	Part 9	3 W D	m f and t	1
841	J	Moore, Joshua	Part 1	1 E D, B M V	m f and o	1
349	J	Mohring, Mannel W.	Part F R	2 W D	m f and o	1
838	J	McCabe, Wm. John	13	M C	m f and t	1



Polling Sub-Division No. 1.

No. of Block	Person	NAME	No. of Lot or Part of Lot	C-S or STRUT	Owner, Rents Factor, etc. or Name of Trust	Ac. Pt.
335	J	Munnings, Wm.	Pt 11	1 E D	M F and T	1
338	J	McClure, James	12	1 E D	M F and O	1
340	J	McClure, Robert	Pt 11	1 E D	M F and O	1
	J	McClure, John	12	1 E D	M F and O	1
346	J	Malloy, Archibald	10, pt 11 W 1/2 12	1, 2, E D	M F and O	1
342	J	Mitchel, Emmanuel	10	2 E D	M F and O	1
343	J	Mitchel, Albert	Pt 11	1 E D	M F and O	1
345	J	Maedel, Paul	8	2 E D	M F and O	1
410	J	Million, Thomas	W 1/2 10	1 E D	M F and O	2
411	J	Million, William	W 1/2 8	1 E D	M F and O	2
412	J	McLarty, John	E 1/2 6	1 E D	M F and O	2
419	J	Moore, William	Pt 1 and 2	1 E D	M F and H H	1
417	J	Manning, Frank	Pt 2	1 E D	M F and O	1
415	J	Morris, Wm.	Pt 3	1 E D	M F and O	7
341	J	Mew, Henry Sr	Pt 30	M C	M F and H H	1
429	J	Mew, Henry Jr	Pt 10	M C	M F and H H	1
483	J	Naegel, Joseph	N pt 13	3 E D	M F and O	1
434	J	Naegel, Frank	W pt 13	3 E D	M F and O	1
435	J	Nott, Nicholas	N 1/2 1, 2	4 E D	M F and O	1
436	J	Oke, Charles	N 1/2 8	3 W D	M F and O	1
440	J	Oke, William	Pt 1, 2	3 E D	M F and O	1
437	J	Ohler, William	N W pt 29	M C	M F and O	1
438	J	Ohler, Michael	N 1/2 30	M C	M F and O	1
446	J	Pframmer, Michael	Pt 1, 2	1, 2 E D	M F and O	1
444	J	Pennington, Thomas	14	M C	M F and T	9
443	J	Pframmer, John	Pt 28, 22	M C	M F and O	1
465	J	Rosier, John	Pt 4, 5, 6, 7, 8	1 E D, M C	M F and O	1
470	J	Rowden, Richard	E 1, 2, 7	3 E D	M F and O	1
491	J	Strachan, William	2, N 1/2 5	2 E D	M F and O	1
488	J	Sevens, John	Pt 25, 26	M C	M F and O	1
493	J	Stewart, John	2	1 E D	M F and O	1
492	J	Stewart, William	Pt 1 R	1 W D	M F and O	1
490	J	Snyder, Jesse	Pt 4, 5	1 E D	M F and O	1
484	J	Schwanz, Michael	11	M C	M F and O	1
486	J	Snyder, Levy	21	M C	M F and T	9
485	J	Schwanz, John G	11	M C	M F and O	1
539	J	Strachan, Robert	W 1/2 10	5 E D	M F and O	2
561	J	Vanston, William	S 1/2 6, pt 7	3 E D, 1 W D	M F and O	1
562	J	Vanston, C. A.	S 1/2 6	3 E D	M F and O	1
561	J	Vanston, George	E 1/2 7, W 1/2 8	1 E D	M F and O	7
594	J	Walters, Charles	S 1/2 1, 2	3 E D	M F and O	1
566	J	Walters, Percy	S 1/2 1, 2	3 E D	M F and O	1
563	J	Walters, William	Pt 5	4 E D	M F and O	1
561	J	Walters, Nathan	E 1/2 4	1 E D	M F and O	1
562	J	Walters, Richard	E 3/4 4	3 E D	M F and O	1
560	J	Walters, Joshua	E 3/4 4	3 E D	M F and O	1
561	J	Walters, Eli	E 3/4 4	3 E D	M F and O	1
580	J	Walters, Richard J	7	2 E D	M F and O	1
577	J	Warner, Samuel	Pt 11	1 E D	M F and O	1

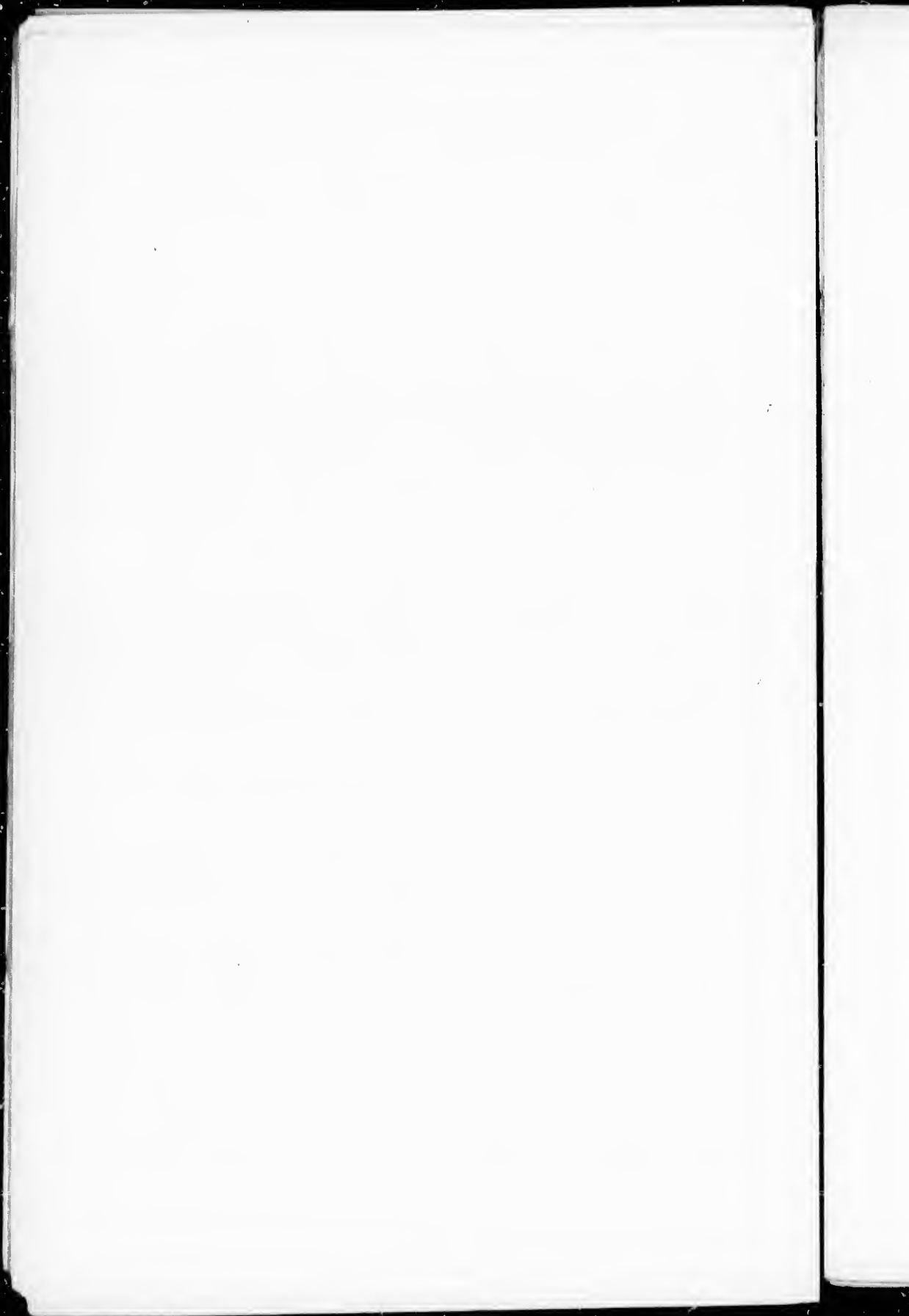


Polling Sub-Devison No. 1.

No. of Voter	Name	No. of Locs. or Part of Loc.	Class of Voter	Owner, Tenant, Farmer, Son, Wid. Farmer	In 2
593	Walters, Clarence	S 1 2 1, 2	3 E, D	m f and o.	1
592	Walters, Wm. Jr.	N 1 2 5, 6	1 W D	f s and f	2
576	White, James	6	M C	m and b h.	1
592	Wilson, George	7	1 W D	m f and o.	1
577	Young, Hear	23	M C	m f and o.	9
585	Young, Edward	Pt 5	4 E, D	m f and o.	3
579	Young, Richard	Pt 5, 6	1 W D	m f and o.	2

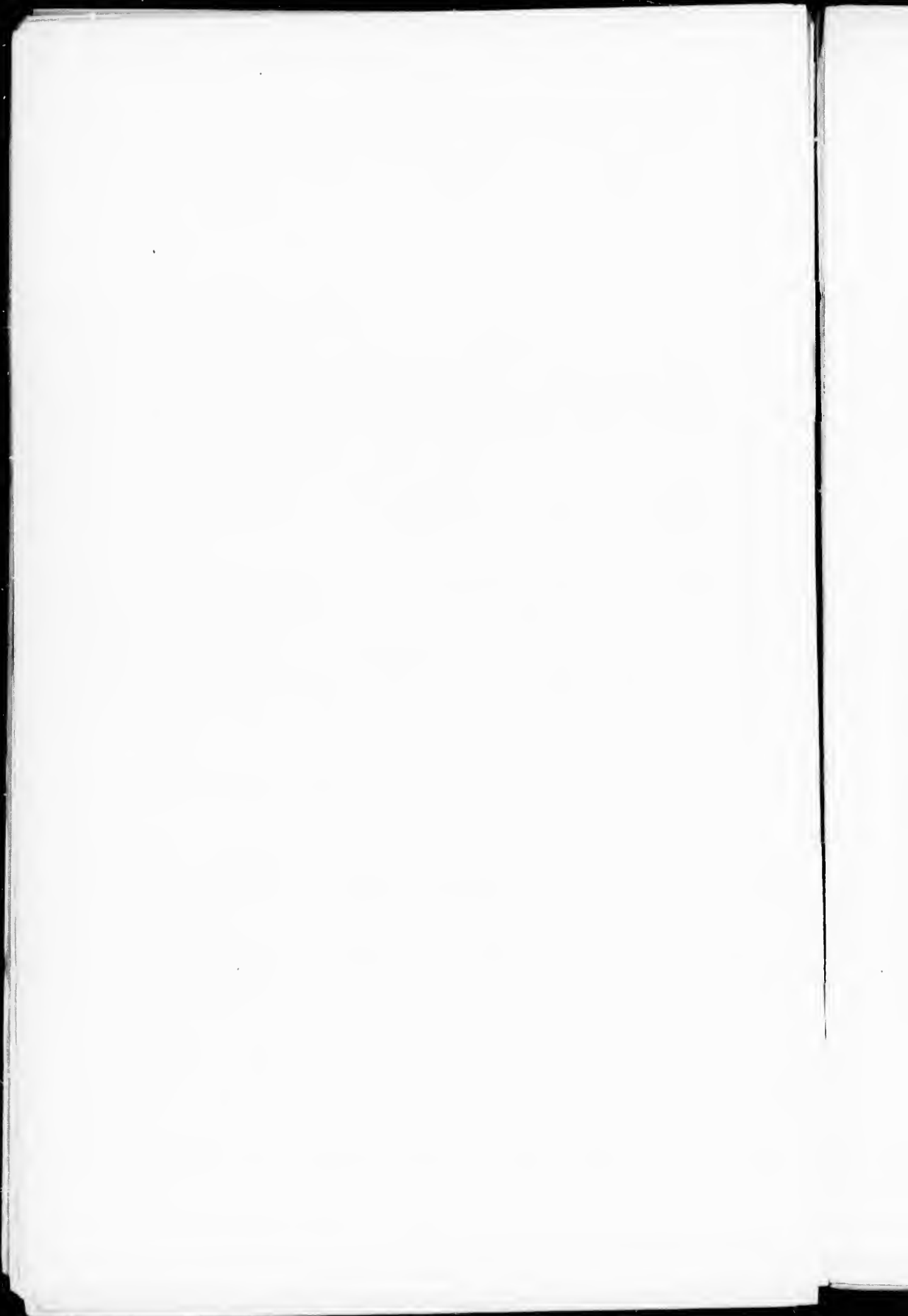
PART 2.—Persons Entitled to Vote at Municipal Elections only.

51	Brecknow, M. A	N E pt 29	M C	O	1
169	Fisher, Elizabeth	6, 7, 8	1 E D	F	1
221	Fisher, Abe	5	2 E D	O	1
530	Garrow, J. T.	8	1 W D	O	7
260	Hobson, Elen	W pt 3	4 E D	O	1
222	Herr, John	3	B M V	O	7
529	Jordan, Francis	8	1 W D	T	7
317	Levy, George	Pt 8, 9	3 E D	O	11
320	Livingston, J. T.	Pt 10	M C	O	[Toronto] 12
348	Meadel, Whelmina	5, 7	B M V	O	1
184	Mickeljohn, Daniel	8, 11, 15, 16	B M V	O	13
336	Munnings, Benjamin	E 4 31	M C	O	7
16	Martin, J. C.	Pt 1, 2	3 E D	O	7
416	Morris, Mary	Pt 3	1 E D	O	7
43	Moore, Abe	S 1/1 5	1 E D	O	[Park Hill]
337	Munnings, John	Pt 31	M C	O	[Stratford] 1
413	Moore, Nora	35 A N 1 2 5	3 E D	O	1
489	McNorton, P.	Pt 25, 26	M C	O	[Vaughan]
278	Ross, A. M.	5	1 W D	O	[Toronto]
487	Snyder, John	21	M C	O	14
528	Seager, Charles	8	1 W D	F	7
114	Straubel, C. F.	Pt 1	1 E D	O	[Toronto]



Polling Sub-Division No. 2.

No.	Name	No. of Lots	Block	City	Owner, Tenant		No.
					Address	Use	
120	Doddi, Alf.	Part 1		2 W D	m f and o	2	
123	Donaldson, Alex.	70, 71, 72, 73, 74, 75		M V	m f and o	2	
121	Dean, John	Part block C		M V	m f and o	2	
122	Douglas, Robert			M V	m f and t	3	
133	Ellis, Robert	Part block C		M V	m f and t	5	
116	Fritzy, Richard	Part block C		L E D	m f and o	3	
147	Fritzley, Jonathan	Part 1		M V	m f and t	3	
204	Goldthorpe, Joseph	Part 1		2 W D	m f and o	3	
197	Goldthorpe, Albert	1, 2		3 W D	m f and o	3	
198	Goldthorpe, J. T.	Part block E		M V	m f and o	3	
206	Gilbs, Richard	Part 2		M V	m f and t	3	
205	Greer, Robert	64		M V	m f and o	3	
207	Gibbers, Thomas	67, 68		M V	m f and o	3	
250	Henderson, Alex.	91, 92		M V	m f and o	3	
256	Howet, George	Part block E		3 W D	m f and t	2	
257	Langhton, T. A.	Part block G			m f and o	4	
280	Jones, James	Part 1, 2		2 W D	m f and o	3	
282	Jarvis, George	6, 7, 8		M V	m f and t	3	
310	Jarvis, Thomas	Part block C		Brewery	m f and t	2	
309	Lasham, William	1		M V	m f and o	3	
314	Long, Mathew	14, 15		M V	m f and t	2	
352	McKinnon, Donald	Part 4		1, 2 W D	m f and o	3	
351	McKinnon, John	Part 3		2 W D	m f and o	3	
350	McKinnon, Angus	Part 7		1 W D	m f and o	3	
401	McAvoy, Owen	Part 1		1 W D	m f and o	3	
402	McQuarrie, John	Part 1		1 W D	m f and o	3	
106	Martin, Henry	3		M V	m f and o	3	
405	McDonald, John	Part 3 and 4		2 W D	m f and t	3	
409	McLean, James	12, part 8		M V	m f and o	3	
403	McFwen, Peter	61, 62, 63		M V	m f and o	3	
399	Morris, William	Part block B			m f and o	3	
407	McLaren, Daniel	Part block E		3 W D	m f and o	3	
376	Morris, Charles	Part block B			m f and o	3	
395	Morris, Joseph	Part block D		L R E	m f and o	3	
396	Morris, Herbert	Part block B		L R W	m f and t	3	
404	McIntyre, John	E 4 64, 65		M V	m f and o	3	
394	McDonald, A. C.	Part block D		L R E	m f and o	1	
311	Martene, Joseph	Part block C		M V	m f and o	1	
353	Maskell, Edward	Part 3 and 4		2 W D	m f and t	7	
489	Oke, John	Part block D		L R E	m f and t	3	



Polling Sub-Division No. 1.

No. of Block	Address	NAME	No. of Lot or Part of Lot	CoN or S10 P1.	Owner, To vote, Election, 1906, To comp. at Wages, 1907	
563		Walters, Wm., sr.	N ½ 5, 6.	1 W D	O	7
163		Wise, Ferdinand	Part 7, 8	M C	O	
391		Wilson, Arthur	13	M C	O	Michigan

PART 3--Persons Entitled to Vote at Elections for the Legislative Assembly Only.

163	Baker, Rev. Mr.	H H			M F	
21	Batt, Samuel	Pt 6 and 7		M C	M F	11
145	Parmbaker, John	11		1 E D	M F	1
531	Shambley, Fred	W ½ 13		3 E D	M F	1
191	Stroug, John	6		2 W D	M F	7
565	Vaustone, John	Pt 3		1 E D	M F	1
578	Warner, David	Pt 11		1 E D	M F	

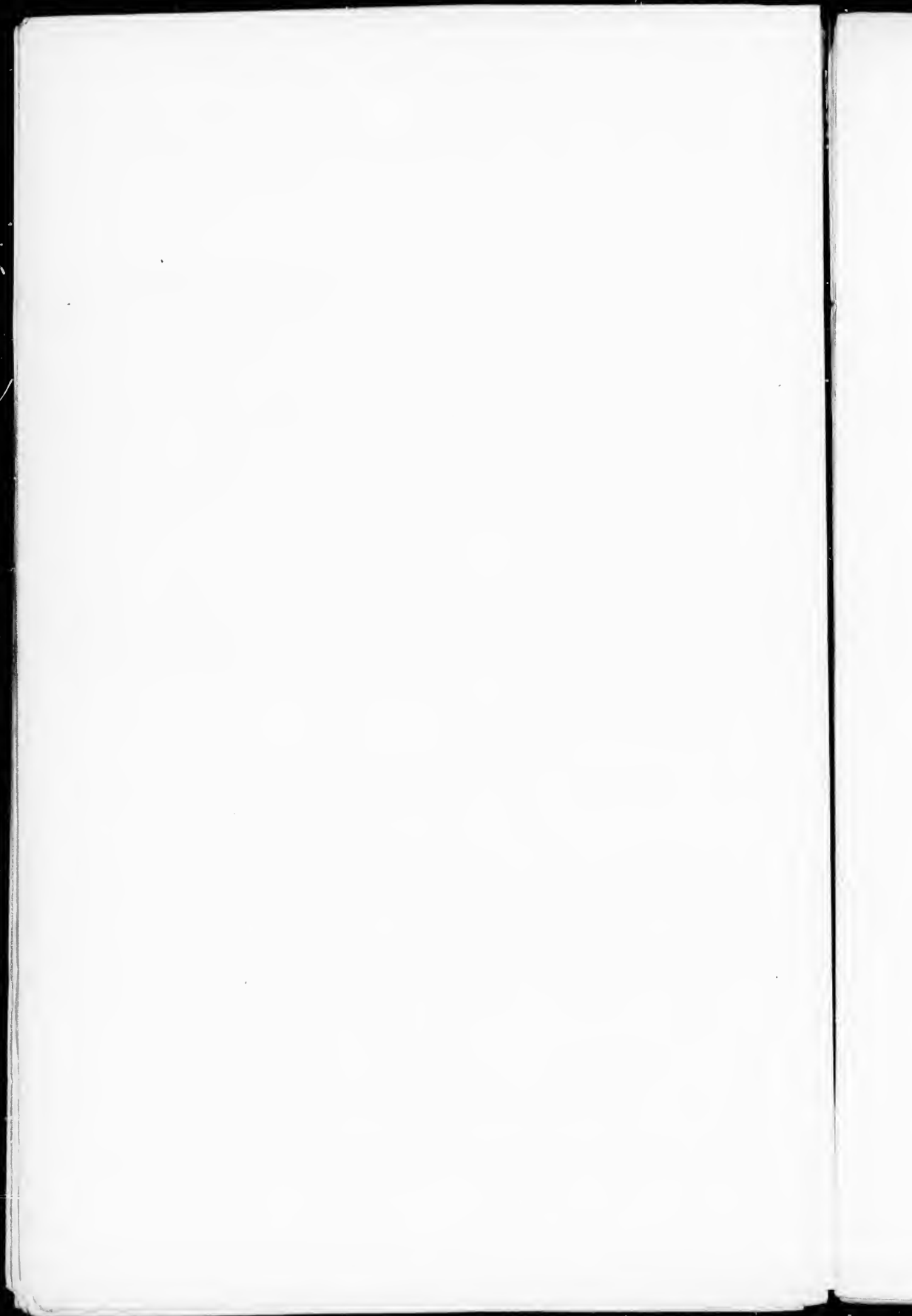
Additional Post Offices—10, London; 11, Mitchell; 12, Toronto; 13, Belgrave; 14, Chilton.

POLLING SUB-DIVISION No. 2.

Comprising Blocks A, B, C, D, E and G, also Lots 1, 2, 3 and 4 in the 1st, 2nd, 3rd and 4th Concessions in the Western Division.

PART I.—Persons Entitled to Vote at Elections to the Legislative Assembly and Municipal Elections.

11	j	Adams, David	Part 3, 4	1 W D	M F and O	7
12	j	Ashley, Isaac	Part 1	1 W D	M F and O	2
11	j	Atrill, E. C.	Part 1, block C and 1	Salt Shaft, Big Meadow	M F and O	7
10	j	Allen, Anthony	Part block 13	L R E and W	M F and O	1
22	j	Bissett, Samuel	5, 1	6, 1 W D	M F and O	3
38	j	Buchanan, Allan	Part 1 and 2	1 W D	M F and O	7
39	j	Buchanan, Jas. G.	Part 1 and 2	1 W D	M F and O	7
46	j	Barker, John	Part block B	1 R W	M F and O	1
41	j	Boxall, John	59	M V	M F and T	2
67	j	Beck, Joseph	Pt blk C, 29, 41, 42, blk H	M V	M F and O	2
28	j	Bogie, Alexander	W ½ 5, S W pt 6, pt 4	3 W D	M F and O	7
40	j	Bradford, George	Part 28	M V	M F and T	2
101	j	Cannell, William	Part block C	M V	M F and O	2
102	j	Cannell, Martin	Part block C	M V	M F and O	2
105	j	Carroll, John	1	M V	M F and O	2
102	j	Clark, John	Part block G	7 W D	M F and T	1
104	j	Chisholm, Charles	Part block C	M V	M F and O	1
115	j	Davidson, James	E part 3, part 4	3 W D	M F and O	7

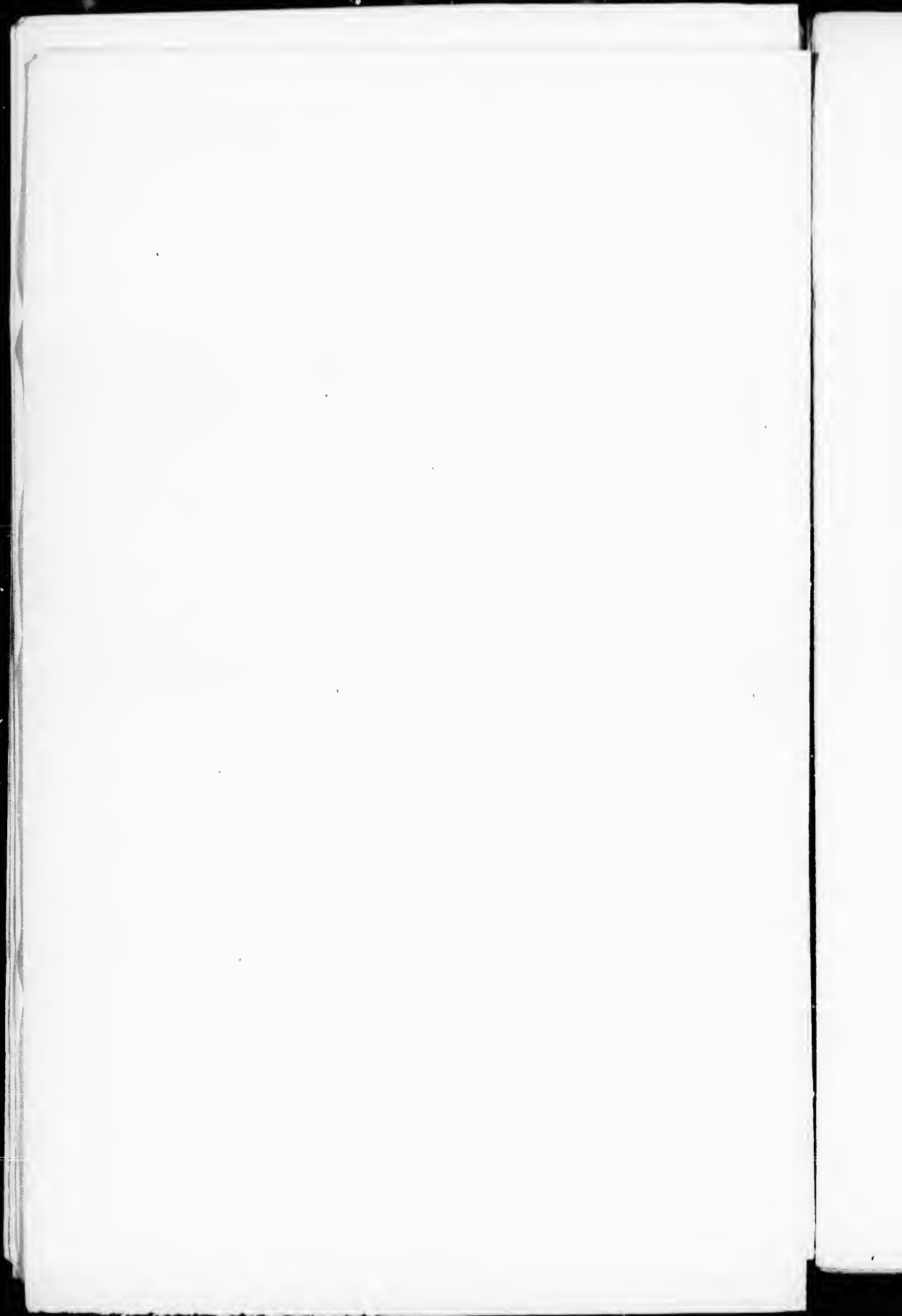


Polling Sub-Division No. 2.

No. of Block	J. non.	NAME	No. of Lot, or Part of Lot.	Cus- tom- Strikes	Owner, Tenant, Farmer's Son, or Wage Earner	
						In
156	j	Potts, William.....	1.....	M V.....	M F and O.....	2
153	j	Precious, Thomas.....	Part 1, 2.....	1 2 E D.....	M F and T.....	2
151	j	Patton, James.....	Part block C.....		M F and O.....	4
152	j	Patton, John.....	Part block F.....	7 W D.....	M F and T.....	4
149	j	Potter, Samuel.....	Part block G.....	7 W D.....	M F and T.....	4
154	j	Precious, John.....	Pt 1 and 2.....	1 2 E D.....	M F and T.....	4
155	j	Plant, Peter.....	Part 1.....	1 W D.....	M F and O.....	4
163	j	Robertson, T. A.....	W ½ 3, 3.....	3, 4 W D.....	M F and O.....	7
516	j	Straughan, Edward jr.....	W ½ 9, pt 1, 2.....	2 W D.....	M F and O.....	2
526	j	Silloh, Henry.....	Part block C.....		M F and O.....	2
520	j	Synmonds, Robert.....	31, 32, 35.....	M V.....	M F and T.....	2
523	j	Simmonds, Robert.....	6, 7, 8.....	M V.....	M F and O.....	2
524	j	Shultz, Arthur.....	Part block C.....	M V.....	M F and O.....	2
525	j	Stewart, James.....	Part block C.....		M F and O.....	2
517	j	Sands, Archibald.....	Part block C, 1, 2, 3.....	1 W D.....	M F and O.....	2
518	j	Sands, James.....	Part block C, 1, 2, 3.....	1 W D.....	M F and O.....	2
519	j	Sands, John.....	Part block C, 1, 2, 3.....	1 W D.....	M F and O.....	2
557	j	Tichborne, Thomas.....	Part block B.....	L R W.....	M F and O.....	4
567		Vanstone, Samuel.....	Part block B.....	Saltford.....	M F and H H.....	2
598	j	Walters, John.....	2.....	M V.....	M F and O.....	2
599		Wilson, Joseph.....	Part 4.....	1 W D.....	M F and O.....	7
565		Wilson, Albert.....	Part A B.....		M F and H H.....	2
596		Wells, James.....	Part block C.....	M V.....	M F and T.....	2
581	j	Young, Robert.....	Part block B.....		M F and H H.....	7

PART 2--Persons Entitled to Vote at Municipal Elections Only.

312		Binke, R. P.....	Part block C.....	M V.....	Ottawa	
312		Binke, F. H.....	Part block C.....	M V.....	Ottawa	
106		Campbell, George.....	26, 27.....	M V.....	O.....	7
103		Chisholm, Jessie.....	Part block C.....		O.....	2
108		Campton, Edwin.....	Lot 6.....	M V.....	O.....	7
125		Duff, Robert.....	Part block C.....		O.....	7
124		Duhmage, Mary Ann.....	Part block B.....		O - Port Albert	
148		Fisher, Mary.....	E ½ 7, part 9 and 4.....	2, 3 W D.....	O.....	

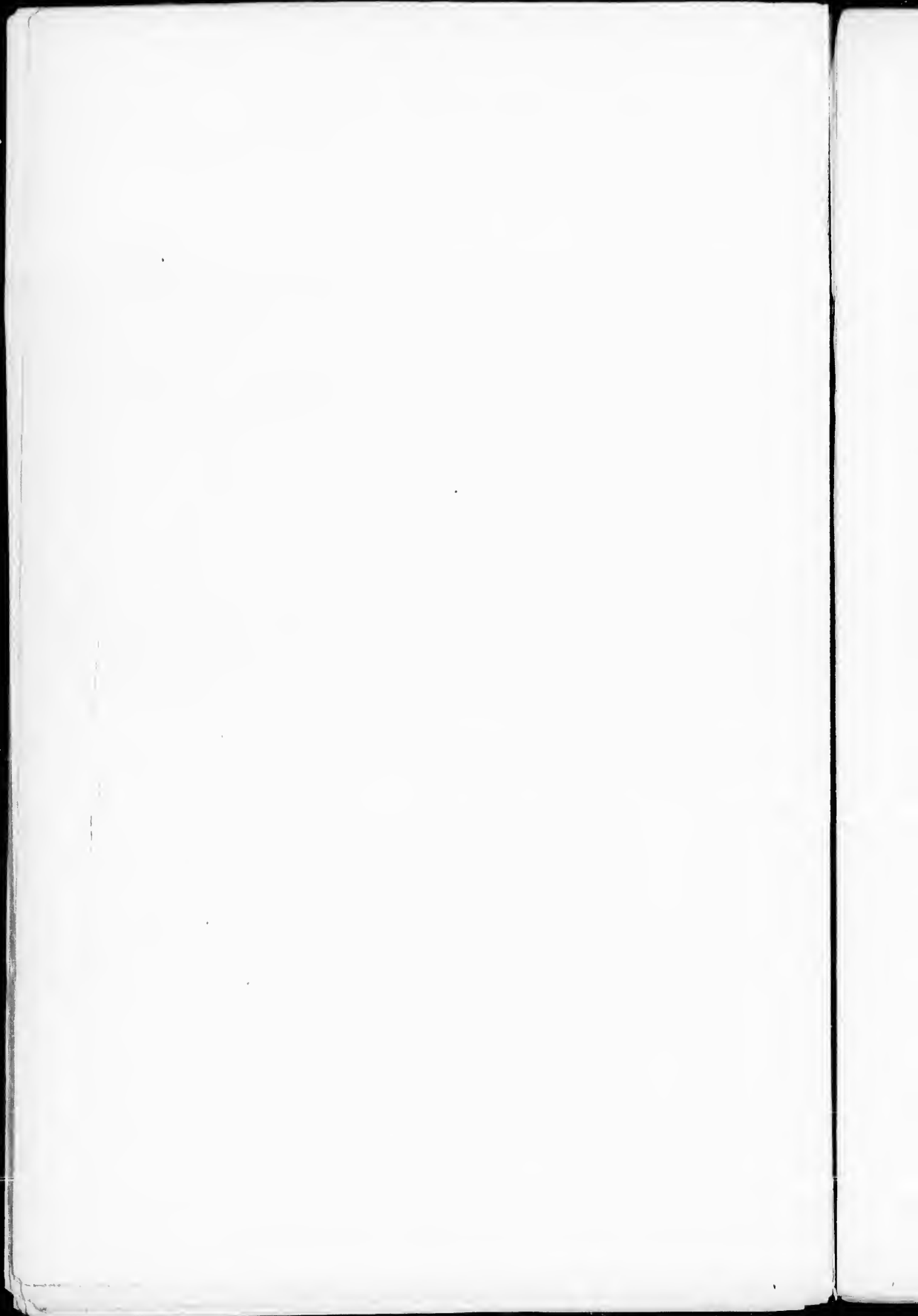


Polling Sub-Division No. 2.

No. of Block	Given	NAME	No. of Lot or Part of Lot	CON- OR STREET	Owner, Tenant, Farmer's, Shop, In- come, or Wage Earner.	2 2
386		McGillivray, Kate.....	2.....	1 W D.....	O.....	7
398		McNeil, Barbara.....	Part block D.....	3, 3, 7 W D.....	O.....	2
397		Morris, R. D.....	Part block B.....	L R W.....	O.....	Manitoba
398		Morris, Edwin J.....	Part block B.....	L R W.....	O.....	Manitoba
90		Reid, John A.....	Part block G.....	7 W D.....	O.....	7
464		Robertson, John.....	3.....	4 W D.....	O.....	7
273		Ross, A. M. Hon.....	5.....	1 W D.....	O.....	Toronto
527		Smith, Abraham.....	Part 1, part block A B.....	L R W, L S O.....	O.....	7
593		Strachan, Jos.....	Saltford.....	Saltford.....	O.....	7
597		Wells, Anna.....	M V.....	O.....	2
595		Webb, Ellen.....	Part block B.....	M V.....	O.....	2
558		Ure, Mrs.....	Part block C.....	O.....	7
586		Yao, J. W.....	12.....	L R E.....	O.....	Winnipeg

PART 3.—Persons Entitled to Vote at Elections for the Legislative Assembly Only.

13	Atwood, Wm.....	Part block C.....	M V.....	M F H H.....	2
281	Jones, Herbert S.....	Part 1, 2.....	1 W D.....	M F.....	4
408	McLaren, Duncan.....	Part block E.....	3 W D.....	M F H H.....	2
430	McLean, John.....	Part block B.....	M V.....	M F.....	2
471	Robertson, William.....	Part block B.....	3 W D.....	M F H H.....	2
521	Symonds, Eli.....	31, 32, 35.....	M V.....	M F.....	2

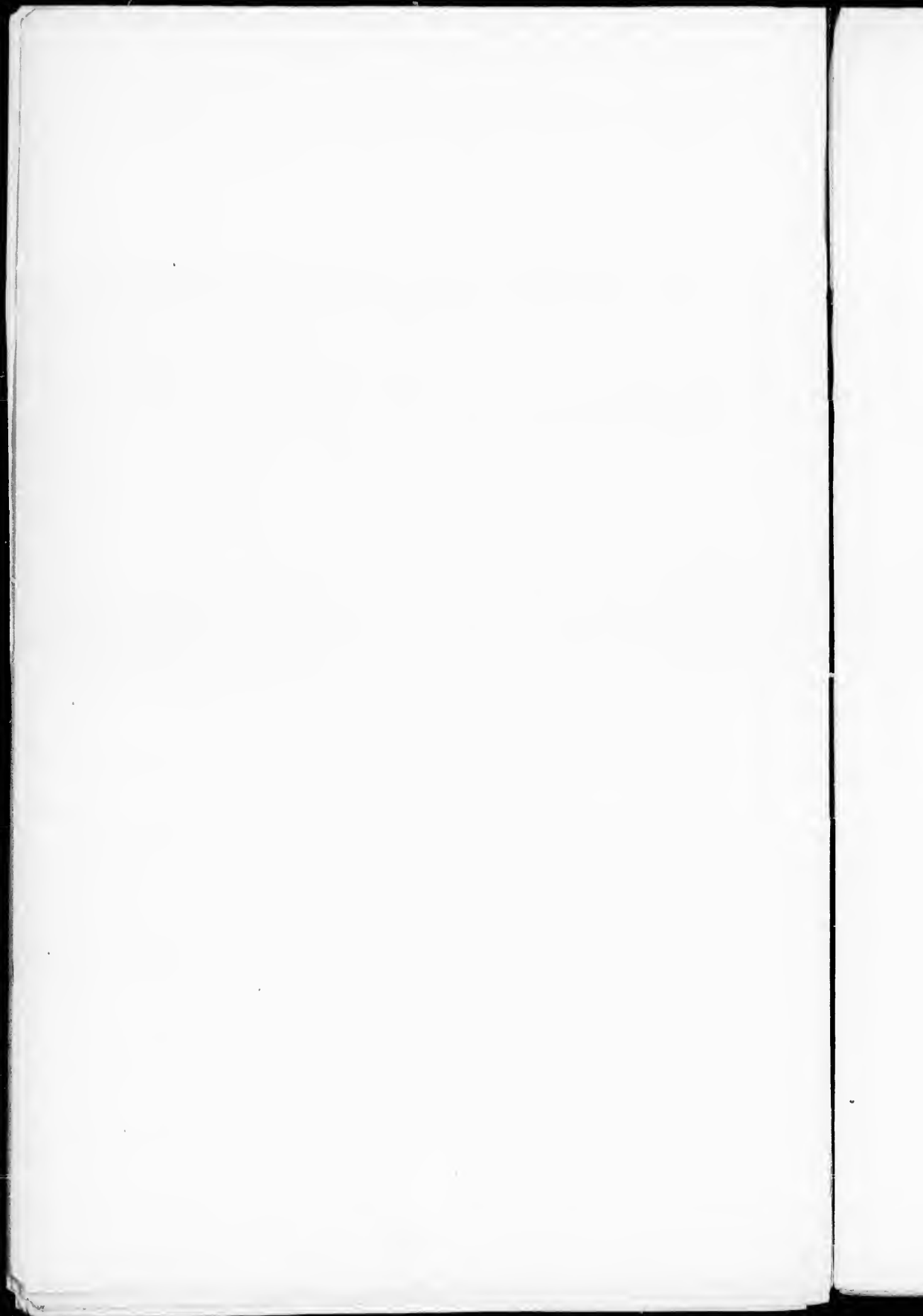


Polling Sub-Division No. 3.

Comprising Block F, the 5th, 6th, 7th, 8th, 9th and 10th Concessions (save and except Lots 9, 10 and 11 on the 9th and 10th Concessions, W. D.), also Lots 1, 2, 3 and 4 on the 11th Concession, and Lots 2, 3 and 1 on the 12th Concession, in the Eastern and Western Divisions.

PART I.—List of Persons Entitled to Vote at Elections to the Legislative Assembly and Municipal Elections.

Lot No.	Section.	NAME	No. of Lot, or Part of Lot.	CON OR STREET.	Owner, T. nam. Farmer's, Sum. In value of Wage Earner	P. No.
2	j	Allen, Robert.	W ½ 1	5 W D	M F and O	3
1	j	Allen, Samuel	E ½ 1	5 W D	M F and O	3
17	j	Askwith, William				
8	j	Adams, Jas. M	2	6 E D	M F and T	3
29	j	Beau, George	Part 1	7 E D	M F and T	3
50	j	Bell, Joseph	2	7 W D	M F and O	3
63	j	Beau, Robert	6	8 W D	M F and T	4
19	j	Barkwell, William	3	8 W D	M F and O	3
45	j	Burns, Thomas	6	7 E D	M F and O	3
47	j	Brownlee, Wilson	3	6 E D	M F and T	6
22	j	Bisect, Samuel	N ½ 1, N ½ 2	4 W D	M F and O	3
107	j	Carroll, Thomas	5	7 W D	M F and O, 7 or 8	3
96	j	Campbell, Thomas	4	9 W D	M F and O	3
92	j	Cunningham, William	8	8 E D	M F and O	3
91	j	Cunningham, David	8	7 E D	M F and O	3
89	j	Clark, John	N ½ 9	8 W D	M F and O	3
97	j	Clark, William	Part 1	10 W D	M F and O	5
72	j	Cantelon, John	Part 1	11 W D	M F and O	5
73	j	Cory, William	Part 1	11 W D	M F and O	5
70	j	Curry, George	4, 5	10 E D	M F and O	4
71	j	Curry, Isaac	4, 5	10 E D	M F and O	4
478	j	Cullis, Albert E.	Pt 17	7 E D	M F and O	4
99	j	Clark, James	Part 9	8 W D	M F and C	4
98	j	Clark, Geo. F.	Part 9	8 W D	M F and O	4
93	j	Clark, John	Part 16	7 E D	M F and T	6
111	j	Dobbie, Joseph	Part 6	7 E D	M F and O	6
110	j	Davison, John	Part 16	7 E D	M F and O	6
117	j	Dustow, John	7	12 W D	M F and O	5
116	j	Dustow, James	Part 3	12 W D	M F and O	5
132	j	Elliott, Thomas	7	8 W D	M F and O	4
128	j	Elliott, Thomas sr.	Part 1	11 W D	M F and T	5
129	j	Elliott, James	Part 7	11 W D	M F and O	5
150	j	Ferguson, William	W ½ 2	10 W D	M F and O	3
152	j	Ferguson, George	3	7 E D	M F and O	3
151	j	Ferguson, Archibald	3	7 E D	M F and O	3
159	j	Fagan, Thomas	3, 4	6 E D	M F and O	3
160	j	Fagan, James	3, 4	6 E D	M F and O	3
158	j	Fagan, John	3, 4	6 E D	M F and O	3
156	j	Fowler, William J.	S ½ 6	6 E D	M F and O	2
157	j	Fowler, Thomas	S ½ 6	6 E D	M F and O	2
153	j	Fowler, John	E ½ 10, 1	5, 6 E D	M F and T	6
187	j	Glen, James	4	7 W D	M F and O	3
187	j	Glen, George	2, 3	9 E D	M F and O	3
186	j	Glen, Robert	2, 3	9 E D	M F and C	3
201	j	Gledhill, Alton	Part 1	8 W D	M F and T	3
176	j	Glen, Alexander	3, S ½ 5	9 E D	M F and O	3
179	j	Gallagher, John	3	7 W D	M F and O	3
196	j	Green, Andrew	N ½ 8	8 W D	M F and O	4

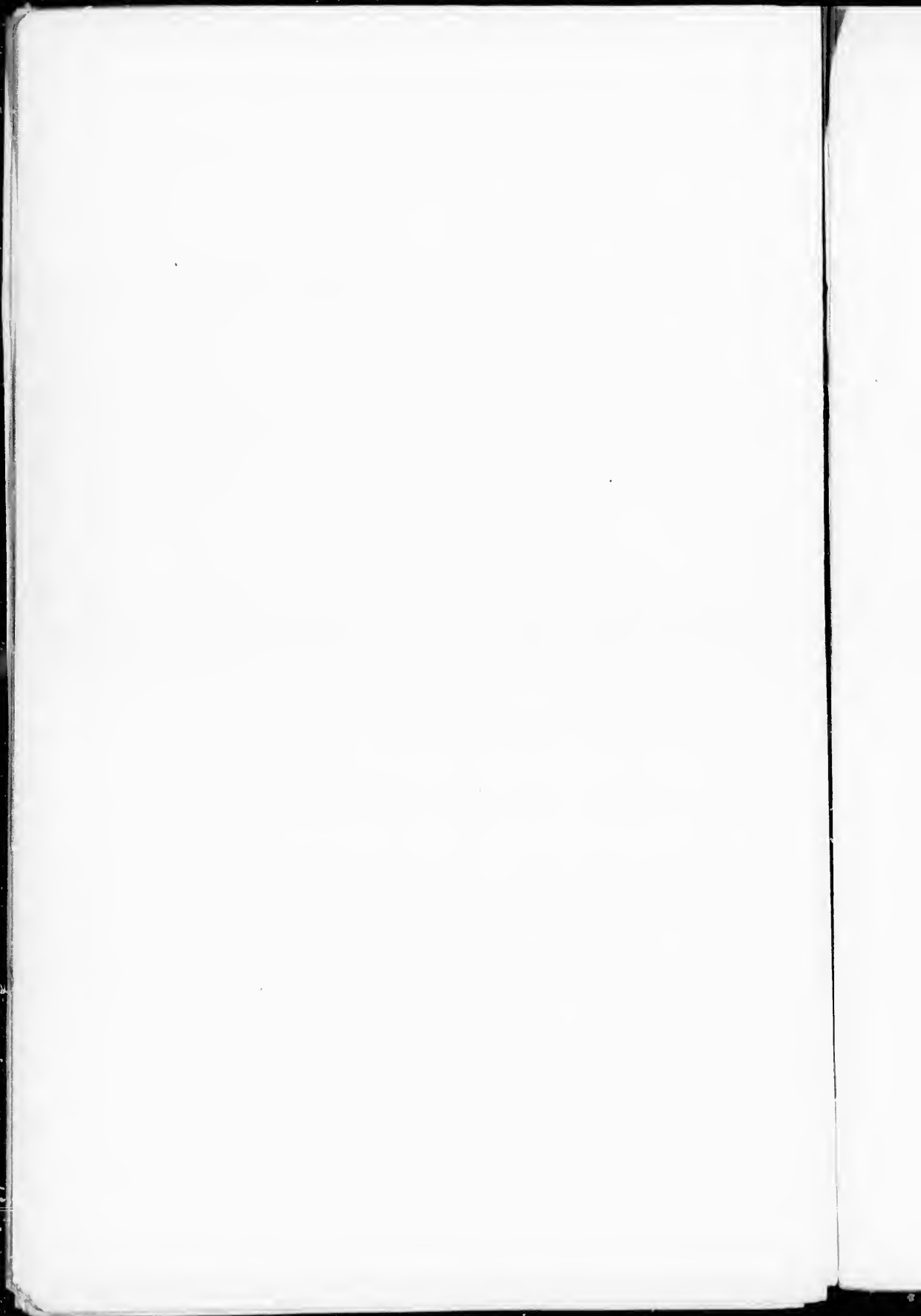


Polling Sub-Division No. 3

No. of Voter	Person	NAME	No. of Lot or Part of Lot	Cov of Street	Owner, Tenant Farmer, etc., or Wage Earner	7
209	a	Gilders, Fletcher	Part 8	6 E D	m f and o	2
209	a	Grac, John	7	7 E D	m f and t	3
215	a	Howell, Wm. N.	2	8 W D	m f and o	3
202		Hogan, Edward	Pt.	7 W D	m f and t	3
210		Hamilton, Wm. J.	11	5 E D	m f and o	4
208	a	Howet, James sr.	14, 15	7 E D	m f and o	4
209		Howet, James jr.	14, 15	7 E D	m f and o	6
210	j	Hamilton, Thomas sr.	4	7 E D	m f and o	3
214	j	Hamilton, Thomas jr.	7	7 E D	m f and t	4
211		Hamilton, George	Part 11	8 F D	m f and o	3
212		Hamilton, Joseph	Part 11	8 F D	m f and o	3
213		Hamilton, Benson	Part 11	8 E D	m f and o	3
203	a	Hetherington, Jos.	6	12 W D	m f and o	5
226		Hutchins, William	Part 1	11 W D	m f and o	5
206	j	Hutson, James	W hf 7	9 E D	m f and o	5
207	j	Hutson, Robert	6	10 E D	m f and o	5
265		Jones, Henry	N pt 13	8 E D	m f and o	6
271	a	Jones, William	Pt F, pt blk G	7 W D	m f and o	3
276	a	Jones, William	1	9 W D	m f and o	5
275	a	Jones, Owen	E hf 2	10 W D	m f and o	5
285	a	Kerr, John	E pt 8	6 E D	m f and o	3
284	j	Kuntz, Jacob	Part 16	7 E D	m f and o	4
291		Kerr, William	3	12 W D	m f and o	5
289	a	Kirkpatrick, Robert	Part 1	11 W D	m f and o	5
297	j	Kirkpatrick, Alex.	Part 4	11 W D	m f and o	5
296	j	Kirkpatrick, Alex. jr.	Part 4	11 W D	m f and t	5
290	j	Kirk, Andrew M.	Part 1	11 W D	m f and o	5
290		Kennedy, John R.	W hf.	8 E D	m f and t	5
301	a	Linfeld, John P.	7	9	m f and t	4
319		Long, Charles	N 1/2 6	6 E D	m f and h	4
425	j	McDonagh, Frank W.	1	7 W D	m f and o	3
424	j	McBride, James	1	8 E D	m f and o	3
426	j	McDonagh, J. A.	1, pt 1	8 W D	m f and o	3
427		McDonagh, James	Pt 1	8 E D	m f and o	3
380	a	Morris, George	6	10 W D	m f and o	7
322	a	McPhee, William	6	9 E D	m f and o	3
323	j	McPhee, James	6	9 E D	m f and o	3
331	j	Mitchell, Thomas	1	6 W D	m f and o	3
332		Mitchell, Samuel	Pt 5	4 E D	m f and o	3
330	j	Mitchell, James	S 1/2 5	6 E D	m f and o	3
329	j	Millon, Andrew	10, pt 16	6, 7 E D	m f and o	3
381	j	Morris, Henry J.	6	9 W D	m f and o	4
382	j	Morris, John	6	9 W D	m f and o	7
360	a	May, George	2	12 W D	m f and o	5
359	j	McVittie, William	2	11 E D	m f and o	5
356	j	McIlwain, Robert	Pt 1	11 W D	m f and o	5
393	a	McPhee, George	Pt 8	8 W D	m f and o	5
389	j	McMillan, Robert	Pt blk F	7 W D	m f and o	4
392	a	McHardy, John	1	5 E D	m f and o	5
324	j	McPhee, Charles	N 1/2 5, N W pt 6	9 E D	m f and o	5
327	a	McPhee, John	9, 10	9 E D	m f and o	5
328	a	McPhee, Thomas	W 1/2 11, 9	8 E D	m f and o	5
325	a	McPhee, Daniel	8	9 E D	m f and o	5
388	a	McIntire, Wm. J.	W 1/2 2	9 W D	m f and o	5
384	j	McIntire, Wm.	3	10 W D	m f and o	5

Polling Sub-Division No. 3.

No.	Name	Lot or Part of Lot	CUBIC FEET	CLASSIFICATION		No.
				Partner	Wagon	
385	McIntire, George	3	10 W D	m f and o	5	
379	McNeven, John, sr	Part 9	9 W D	m f and h	5	
383	McHarly, Charles	4	10 W D	m f and o	7	
380	McKnight, William	4	12 W D	m f and o	7	
387	McKnight, James	4	12 W D	m f and o	7	
357	McWhinney, John	Part	11 W D	m f and o	7	
358	Matthews, Samuel	E pt 1	11 W D	m f and o	7	
421	Moore, Richard	S ½ 1	5 E D	m f and t	5	
391	McHarly, James	1	9 E D	m f and o	7	
394	McMillan, George	S ½ 8	8 W D	m f and o	4	
355	Moreland, James H	Part 1	11 W D	m f and t	5	
431	Millian, Edward	W ½ 9	5 E D	m f and o	2	
132	Neaves, William	Part 416	7 E D	m f and o	6	
450	Potter, W. C	7, E ½ 8	10 W D	m f and o	7	
419	Potter, Samuel	W ½ 8	10 W D	m f and o	7	
417	Phillips, Wm	2	12 W D	m f and h	5	
462	Robertson, Alex	2	6 W D	m f and o	3	
461	Robertson, John	E hf 15	6 E D	m f and o	6	
460	Robertson, Wm	W hf 15	6 E D	m f and o	6	
459	Robertson, Thomas	12	7 E D	m f and o	6	
466	Ryan, David	3	10 E D	m f and o	5	
467	Ryan, Richard	E ½ 2	10 W D	m f and o	5	
532	Smith, William	Part 1	7 E D	m f and o	3	
507	Sallows, Thomas	5	9 W D	m f and o	7	
530	Straughan, Robert	10, W ½ 10, pt 11, 12	5, 4 E D	m f and o	2	
480	Straughan, Edward, sr	W ½ 12	6 E D	m f and o	6	
481	Straughan, George	E ½ 11	6 E D	m f and o	6	
479	Straughan, James	E ½ 12	6 E D	m f and o	6	
475	Synington, John	15, 16, Pt 17	7 E D	m f and o	6	
477	Synington, William	N ½ 17	7 E D	m f and o	6	
508	Sallows, James	5	9 W D	m f and o	3	
474	Synington, James	14	8 E D	m f and o	6	
473	Smith, Albert	2	8 E D	m f and o	3	
535	Sterling, Alex	2	7 E D	m f and o	3	
496	Stewart, Charles	3	11 W D	m f and o	5	
511	Sheppard, George	1	10 E D	m f and o	5	
512	Sheppard, Jacob	1	10 E D	m f and c	5	
513	Sheppard, Thomas G	1	10 E D	m f and o	5	
514	Sheppard, Alex P	1	11 E D	m f and o	5	
515	Sheppard, Samuel	5	12 W D	m f and o	5	
495	Shields, Alex	Pt 5	10 E D	m f and o	5	
482	Stevenson, William	E ½ 7	5 E D	m f and t	3	
483	Stalker, Joseph	Pt 7	7 E D	m f and t	3	
554	Tiffin, John, sr	3	9 W D	m f and o	5	
553	Tiffin, John, jr	3	9 W D	m f and f s	5	
545	Treble, C. W.	E ½ 4 E ½ 5	5 E D	m f and o	3	
546	Teeble, John	N ½ 1	6 E D	m f and o	3	
540	Tabb, James	13, 14, pt 8	6 E D	m f and t	6	
541	Tabb, William J	13, 14	6 E D	m f and t	6	
537	Tewsley, Harry	5	8 E D	m f and o	3	
177	Tewsley, James, sr	W ½ 6	8 E D	m f and o	3	
542	Tabb, Thomas H	13, 14	6 E D	m f and t	6	
539	Tewsley, Joseph	5	8 E D	m f and o	3	
547	Treble, Charles	E ½ 5	5 E D	m f and o	3	

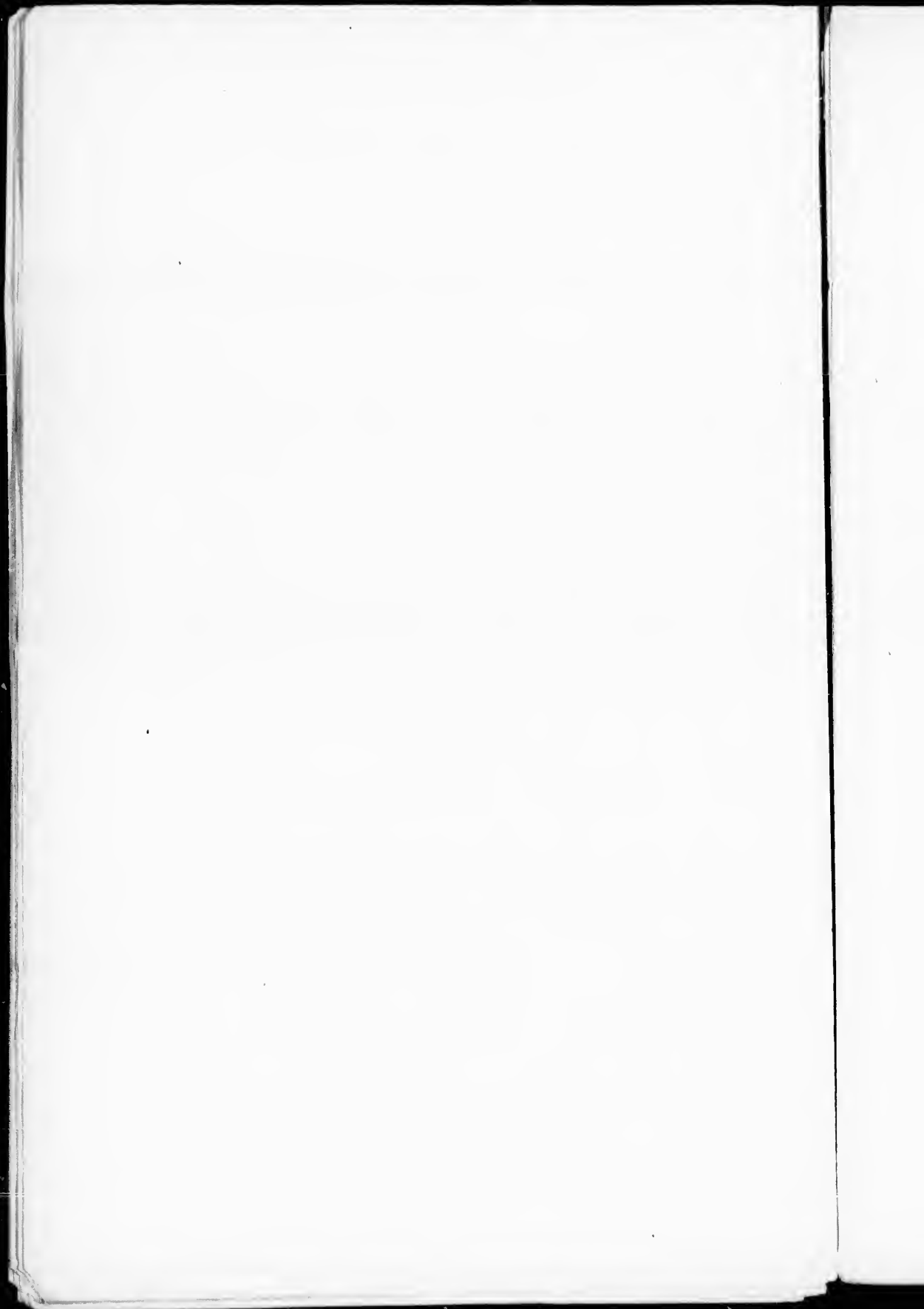


Polling Sub-Division No. 3

No. on Roll	Initials	NAME	No. of Lot or Part of Lot	Class of Street	Owner, Tenant, Farmer, or Wage Earner	In	Out
559	J	Vanston, Charles	N pt 7	6 E D	M F and O	7	
560	J	Vurcoe, John A. Sr.	5	S W D	M F and O	8	
574	J	Walter, Charles A.	W hf 4, S hf 1, S hf 1	5, 6, E D	M F and O	2	
573	J	Wilson, David	Part 16	7 E D	M F and O	6	
575	J	Walter, J. A.	2	5 W D	M F and O	2	
581	J	Walter, William, jr.	N 1 2 5, 6	4 W D	M F and O	2	
569	J	Watson, William	Part 11	8 E D	M F and O	5	
568	J	Wilson, John	E hf 7	9 E D	M F and O	5	
591	J	Williams, R. B. II	S 1 2 9	8 W D	M F and O	4	
570	J	Windmill, James	12	8 E D	M F and T	6	
571	J	Windmill, Osear	12	8 E D	M F and T	6	
582	J	Young, William	10, Pt blk G	7 W D	M F and O	4	
572	J	Young, Gordon, sr.	9	7 E D	M F and O	3	
573	J	Young, Gordon, jr.	10	7 E D	M F and O	3	
569	J	Young, William, sr.	Pt 8	8 E D	M F and O	2	
575	J	Young, John	7	5 E D	M F and T	8	
571	J	Young, John	9	7 E D	M F and O	3	
570	J	Young, Alex, sr.	N hf 5	6 E D	M F and O	3	
571	J	Young, Roderick M.	7	8 E D	M F and O	3	
567	J	Young, Alexander, jr.	5, pt 6	8, 7 E D	M F and O	3	
568	J	Young, William, jr.	1, pt 6	8 E D	M F and O	3	
581	J	Young, Alex H.	N hf 1 E 4 2	10 W D	M F and O	5	
583	J	Young, James	11, pt blk E	4 W D	M F and O	4	
576	J	Young, Andrew A.	8, 4, 3	5 E D, 4, 6 W D	M F and O	3	

PART 2. - Persons Entitled to Vote at Municipal Elections Only.

572		Blair, Grace	12	8 E D	O	6	
543		Carey, O. F.	13, 14	6 E D	O	7	
74		Carter, David	Part 1	11 W D	O		[Clinton]
155		Fowler, Margret					
423		Feagan, Sam	2	5 E D	O	7	
185		Glen, Margaret	2, 3	9 E D	O	3	
30		Hogan, Patrick	1	7 E D	O	7	
261		Jones, Hannah	N part 13	8 E D	O	5	
280		Jones, James	Part block G	7 W D	O		[Duluth]
306		McCracken, James, jr.	7	9 W D	O	7	
305		McCracken, James, sr.	7	9 W D	O	7	
321		McPhee, Almira	6	9 E D	O	3	
48		Million, J. H.	9	6 E D	O	7	
326		McPhee, Jane	8	9 E D	O	3	



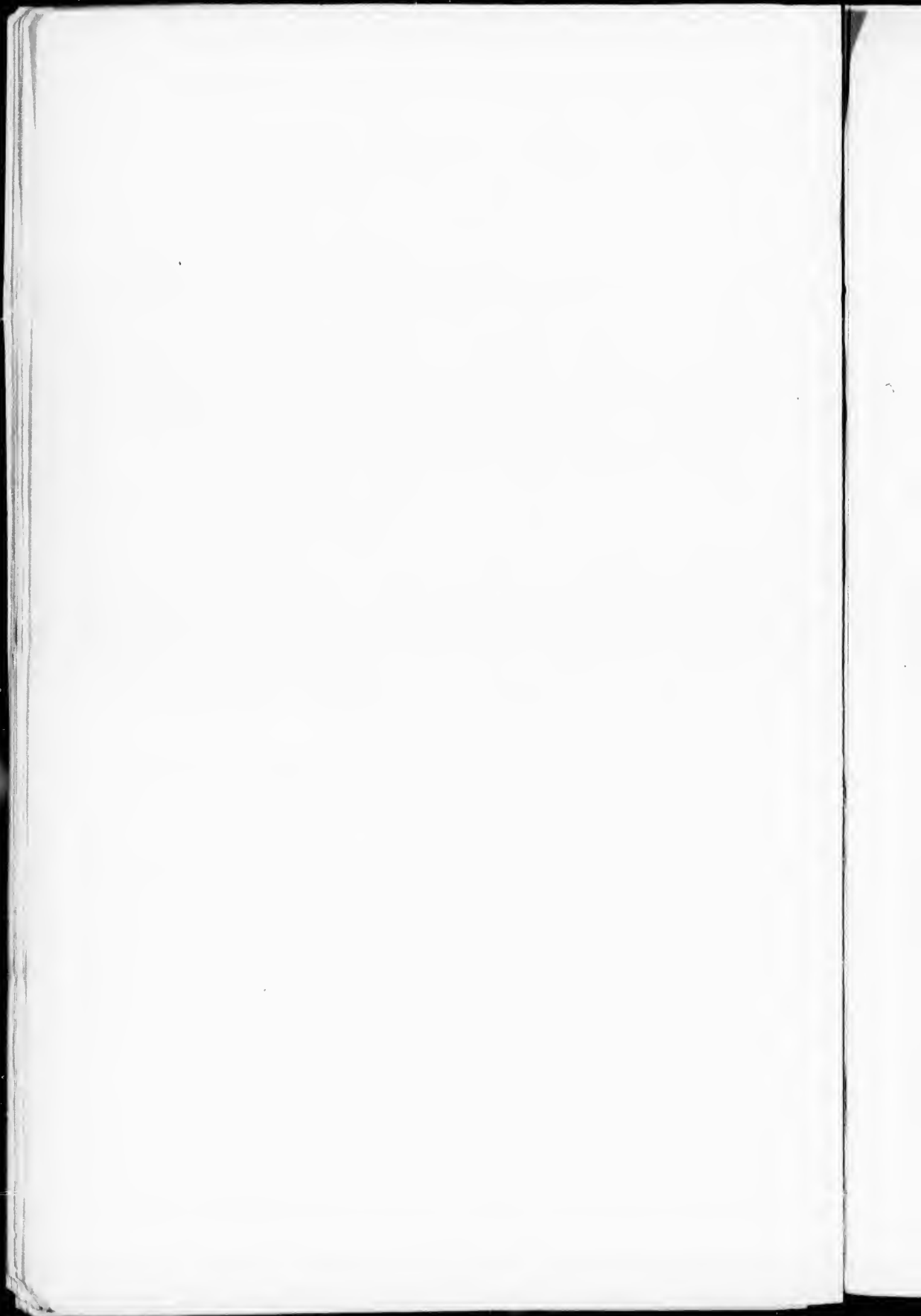
Polling Sub-Division No. 3

PART 2.-Persons Entitled to Vote at Municipal Elections Only.

No. of Voter	Address	NAME	No. of Lot, or Part of Lot.	CON- DIT STREET.	Owner, Tenant, Farmer's Son, In- come, or Wage Earner	Age
154		Million, Jane.....	E ½ W ½ 11.....	5, 6 E D.....	O.....	7
298		McCan, Peter.....	Part 4.....	11 W D.....	O.....	Dungannon
355		Morrow, Wm.....	Part 1.....	11 W D.....	O.....	Dungannon
9		Reid, Louise.....	2.....	7 E D.....	O.....	7
468		Ryan, Thomas.....	N ½ 2.....	10 E D.....	O.....	California
476		Stitt, Mary.....	pt 16.....	7 E D.....	O.....	6
509		Sallows, Ellen.....	5.....	10 W D.....	O.....	7
510		Sallows, Frank.....	5.....	10 W D.....	O.....	[Listowel]
536		Tindal, Mary Jane.....	3.....	8 E D.....	O.....	3
538		Towsley, Margaret.....	W ½ 11.....	7 E D.....	O.....	3
544		Vanstone, Sarah.....	Pt 8.....	6 E D.....	O.....	6
64		Warnock, Wm.....	Part block F.....	7 W D.....	O.....	6

PART 3.-Persons Entitled to Vote at Elections for the Legislative Assembly Only.

44		Buehanan, John.....	3.....	6 W D.....	M F.....	3
100		Cousins, James.....	8 W. D.....	7 W D.....	M F.....	4
130		Elliott, Charles.....	Part 1.....	11 W D.....	M F.....	5
131		Elliott, Thomas.....	Part 1.....	11 W D.....	M F.....	5
49½		Moss, Rev. Mr.....	Pt 1.....	12 Con.....	M F H H.....	
472		Rutherford, Eugene.....	2.....	6 W D.....	M F.....	3
566		Vanstone, Wm.....	E ½ 1.....	5 W D.....	M F.....	3
579		Warner, George.....	4.....	8 E D.....	M F.....	3

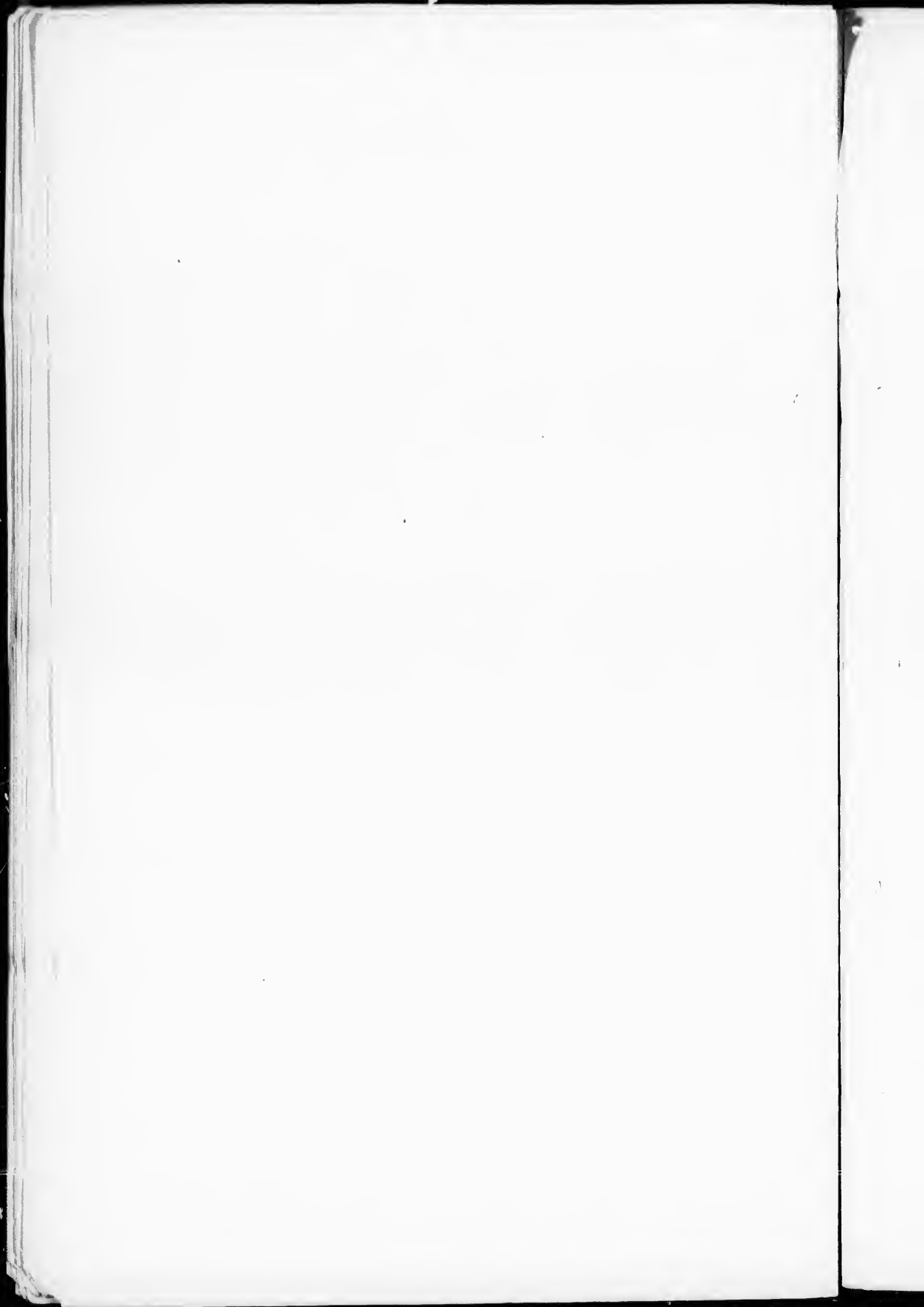


Polling Sub-Division No. 4.

Comprising the Lake Road East and West and Lake Shore from Lot 1 to Boundary Line, also the 11th, 12th, 14th and 14th Concessions, Western Division, leave and except Lots 1, 2, J and 4, 11th Concession, and Lots 2, 5 and 4 on the 12th Concession, also Lots 9, 10, 11 on the 9th and 10th Concessions, W. D.

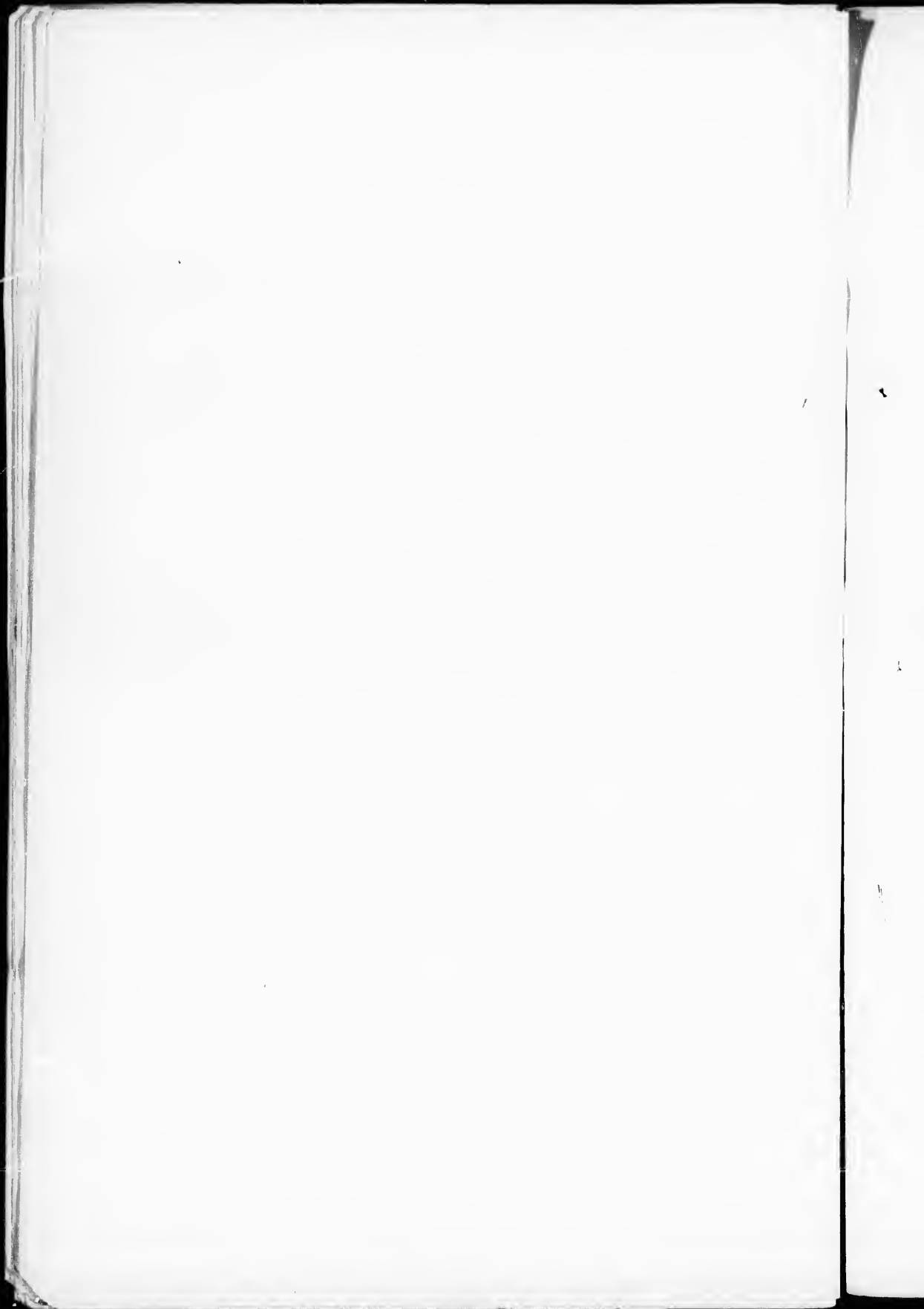
PART I--List of Persons Entitled to Vote at Elections to the Legislative Assembly and Municipal Elections.

No. of Poll.	Class.	NAME.	No. of Lot or Part of Lot	CON- DITION	OWNER, Tenant, Farmer, Son, In- come, or Wage Earner.	Age
10	J	Allen, Anthony	Pt 1, 1 pt blk B	11 W D, L R W	L R E, m f and o.	4
61	J	Bogie, Robert	Part 13	L R W	m f and o	8
62	J	Bogie, Andrew	Part 13	L R W	m f and o	8
56	J	Bogie, Wm. G.	11	L R W	m f and o	5
36	J	Brindly, Wm.	Part 18, 19	L S C	m f and o	7
59	J	Beuchler, Xavier, jr.	N pt 14	L R W	m f and o	7
60	J	Beuchler, Joseph	Pt 14, N 1/2 13	L R W	m f and o	5
55	J	Bogie, James C.	N 1/2 9 and 10	11 W D	m f and o	5
51	J	Bogie, David C.	N 1/2 9 and 10	11 W D	m f and o	5
58	J	Bogie, Wm. G.	15	L R W	m f and o	8
32	J	Boyd, Thomas	7	11 W D	m f and o	5
81	J	Boyd, David	5	11 W D	m f and o	5
93	J	Boyd, Frank	5	11 W D	m f and o	5
99	J	Clark, James	9	9 W D	m f and o	4
88	J	Chisholm, Hugh	6	L S C	m f and o	4
85	J	Chisholm, James	10	9 W D	m f and o	4
84	J	Chisholm, John	7	L R E	m f and o	4
82	J	Cook, Joseph	Part 8	L R W, L S C	m f and o	4
81	J	Carney, Daniel	N 1/2 8	L R E	m f and o	4
78	J	Culbert, George	Pt 15	L R E	m f and o	8
77	J	Cautwell, John	Part 16	L R E	m f and o	8
76	J	Campbell, James	11	14 W D	m f and o	8
79	J	Carney, Richard	13, 14	L R E	m f and o	4
86	J	Clutton, John G.	4	L S C	m f and o	4
95	J	Clutton, Alex H.	4	L R W	m f and o	4
100	J	Cummings, Donald	Part 2	L R W	m f and o	4
83	J	Carney, Michael	N hf 8	L R E	m f and o	4
119	J	Doherty, Thomas	Part 18, 19	L S C	m f and o	8
118	J	Doherty, Nixon	Part 18, 19	L S C	m f and o	8
143	J	Fullford, Richard	S 1 2 9	L R E	m f and o	4
141	J	Fullford, George	S 1 8	L R E	m f and o	4
142	J	Fullford, Wm.	S 1 8	L R E	m f and o	4
140	J	Foley, Mathew	S part 10	L S C	m f and o	4
139	J	Foley, John	9	L R W	m f and o	4
144	J	Foley, George	9	L R W	m f and o	4
195	J	Green, Henry	S 1 9	10 W D	m f and o	4
194	J	Garrett, Alex	N pt 11	L R E	m f and o	4
190	J	Graham, Wm. J.	16	L R W	m f and o	8
189	J	Green, Peter	Part 16	L R W	m f and o	8
188	J	Graham, Wm. B.	11	13 W D	m f and o	8
190	J	Gliddon, Richard	S pt 12	L R W	m f and o	4
196	J	Green, Andrew	S hf 9	11 W D	m f and o	4
238	J	Horton, James	S hf 7	L R W	m f and o	4
234	J	Horton, John	5	L R W	m f and o	4
232	J	Horton, Hillary	N hf 7	L R W	m f and o	4
230	J	Healy, Joseph	N hf 9	L R E	m f and o	4



Polling Sub-Division No. 4.

Lot No.	Acron.	NAME.	No. of Lot or Part of Lot	Dist. or Street.	Owner, Tenant, Farmer, Son, Wage Earner.	In C.
192	j	Horton, Arthur.	S 1 2 11	L R E	m f and o	1
256	j	Hawkins, Charles.	Part 17	L R W	m f and o	8
227	j	Hawkins, Frank.	Part 16	L R E	m f and o	8
254	j	Hawkins, William.	W 1 10	B W D	m f and o	8
255	j	Hayden, Frank.	Part 18 and 19	L S C	m f and o	8
295	j	Horton, H. J.	Part 1	L R W	m f and o	1
274	j	Johnston, Samuel.	N hf 8	12 W D	m f and o	8
279	j	Jewell, William.	Part 1	L R E	m f and o	8
294	j	Kelly, Theo	N E 1 10	L S C	m f and o	1
293	j	Kelly, Patrick.	N hf 10	L R E	m f and o	8
297	j	Kennedy, James.	Part 1	11 W D	m f and o	1
292	j	Kirkpatrick, James.	N 1 11 and 12	L R E	m f and o	4
302	j	Linklater, James.	S hf 6	L R W	m f and o	4
303	j	Linfield, Samuel.	Part 5, 8	L R E, W	m f and o	4
307	j	Lawson, David.	2 pt 2	L R W, L S C	m f and o	4
303	j	Lawson, John.	2 pt 2	L R W, L S C	m f and o	4
392	j	McHardy, John.	N 1 10	L S C	m f and o	4
391	j	McHardy, James.	N hf 10	L S C	m f and o	4
372	j	McManns, James, sr.	7	L S C	m f and o	1
373	j	McManns, Wm.	7	L S C	m f and o	4
374	j	McManns, James, jr.	5	L S C	m f and o	1
375	j	McManns, Hamilton.	11	L S C	m f and o	4
369	j	McComel, Wm.	Part 17	L R E	m f and o	8
370	j	Maw, Elisha.	Part 17	L R W	m f and o	8
368	j	McNee, Duncan.	9	13 W D	m f and o	5
367	j	McCann, Joseph E.	S 1 8	12 W D	m f and o	5
365	j	McWhinney, Wm.	9	12 W D	m f and o	5
377	j	McLeod, Alex.	N hf 6	L R W	m f and h	1
362	j	Morris, Samuel.	N part 8	11 W D	m f and o	1
363	j	Morris, Abner.	N pt 8	11 W D	m f and o	1
361	j	Morris, Kenneth.	W hf 6	11 W D	m f and o	4
35	j	Morrow, Richard, jr.	7	11 W D	m f and o	5
31	j	Morrow, Richard, sr.	7	11 W D	m f and o	5
368	j	McWhinney, Thomas.	9	12 W D	m f and o	5
371	j	Mosier, Jacob	10	L R	m f and o	1
378	j	McLeod, Daniel	N hf 4	L R E	m f and h	1
457	j	Quade, Robert	1 pt 1	L S C, L R W	m f and o	1
469	j	Robertson, Wm. B.	Part 1	L R E	m f and 4	1
505	j	Sterling, David	10	10 W D	m f and o	1
506	j	Sterling, Alex.	10	10 W D	m f and o	4
503	j	Stewart, James O.	11	10 W D	m f and o	1
504	j	Stewart, Percy	11	9 W D	m f and o	4
500	j	Sterling, W. D.	9	L S C	m f and o	1
498	j	Stewart, John	11	L S C	m f and t	4
477	j	Sturdy, Thomas	11	11 W D	m f and o	4
501	j	Shaw, Edward	S 1 4	L R E	m f and o	4
522	j	Shaw, John	N 1 4	L R E	m f and o	4

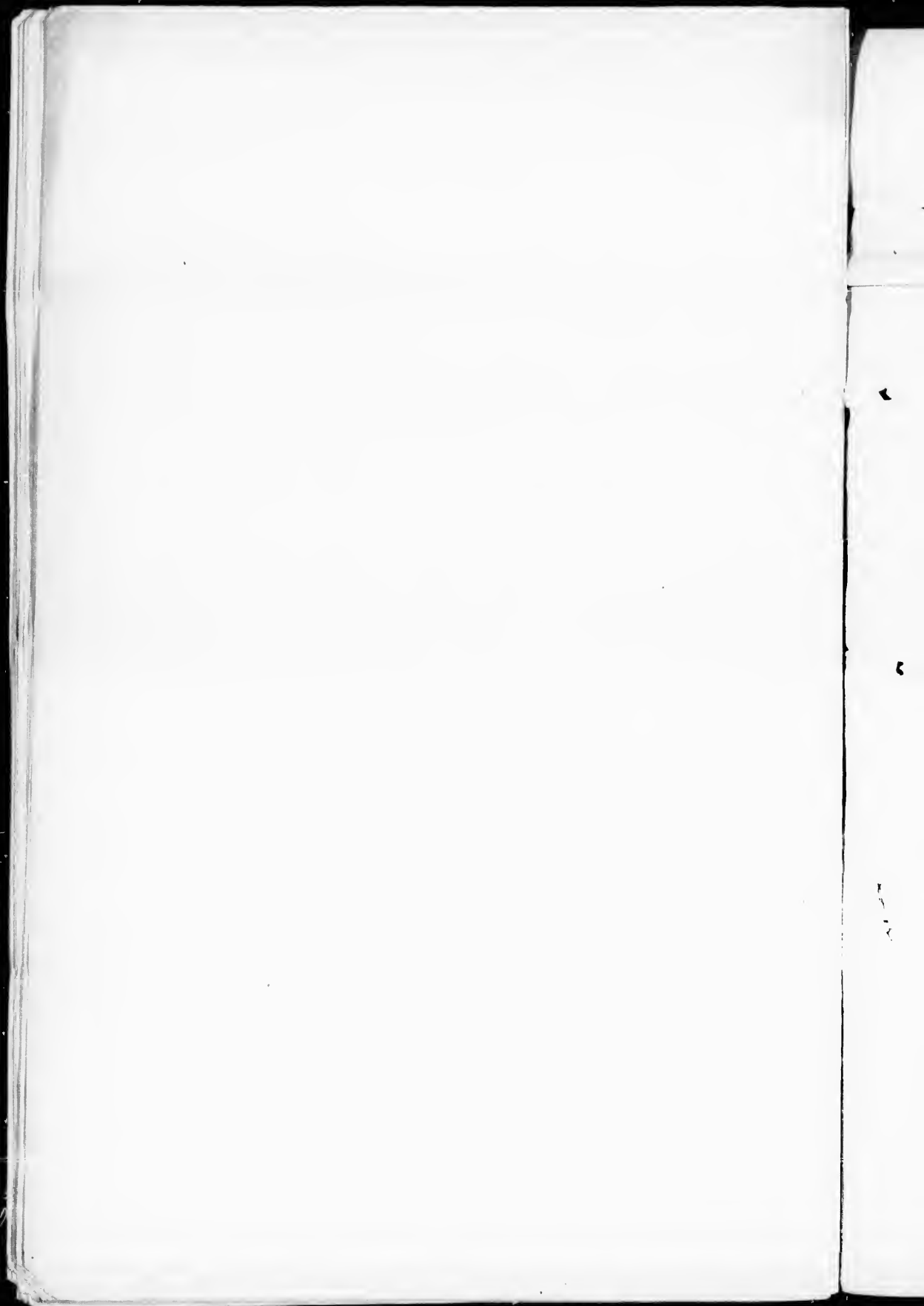


Polling Sub-Division No. 4

No. of Poll	Journal	NAME	No. of Lot or Part of Lot	CON- DIT SHEET	OWNER, Tenant, Farmer, Sgn. In some or Wage Earner	R. O.
552	J	Taylor, James.....	8.....	1, S C, L R W M F and O.....	4	
548	J	Thompson, Joseph.....	10.....	22 W D.....	M F and O.....	1
555	J	Tobin, James.....	3.....	L R W, L R C M F and O.....	1	
556	J	Tobin, Michal.....	3.....	L R W, L R C M F and O.....	1	
551	J	Turlow, Thomas.....	15.....	L S C.....	M F and O.....	8
563	J	Vrooman, Win.....	E ½ 10.....	13 W D.....	M F and O.....	8
583	J	Wright, J. J.....	Part 8.....	L S C.....	M F and O.....	7
582	J	Watson, James.....	Part 8, 9, 10.....	11 W D.....	M F and O.....	2
585	J	Williams, Raby.....	S hf 3.....	L R E.....	M F and O.....	4
586	J	Williams, S. B.....	2.....	L R E.....	M F and O.....	4
591	J	Williams, R. B. H.....	2.....	L R E.....	M F and O.....	1
587	J	Williams, J. M.....	2.....	L R E.....	M F and O.....	1
584	J	Williams, Arthur A.....	N hf 3.....	L R E.....	M F and O.....	4
588	J	Williams, Patrick.....	S hf 3 and 2.....	L R E.....	M F and O.....	1
580	J	Young, William.....	Part 17.....	L R W.....	M F and O.....	8
587	J	Zollner, Henry.....	Part 12.....	L S C.....	M F and O.....	4

PART 2.—Persons Entitled to Vote at Municipal Elections Only.

53	Bogie, Mary Ann.....	Part 9, 10.....	11.....	O.....	8
228	Christlaw, Maria.....	16.....	L S C.....	O.....	8
193	Garrett, Margret.....	N pt 11.....	L R C.....	O.....	8
231	Horton, Ellen.....	W ½ 7.....	L R W.....	O.....	4
87	Lanklater, John.....	N hf 6.....	L R W.....	O.....	8 ratfor d
364	McWhimney, Ellen.....	9.....	12 E D.....	O.....	5
428	Morris, Alfred.....	E ½ 6.....	11 W D.....	O.....	Dako tn
586	Martin, J. C.....	12.....	L R B.....	O.....	7
458	McKenzie, John.....	1 part 1.....	L S C.....	O.....	Galt
80	Pree, Rees.....	11.....	12 W D.....	O.....	7
97	Pardon, T. H.....	part 18, 19.....	L S C.....	O.....	Toron to



Polling Sub-Division No. 4.

No. of Voters	Address	NAME	No. of Lot, or Part of Lot.	CON- DIT STATUS	Owner, Tenant, Farmer, Shop, In- come, or Wage Earner		P. No.
					O	T	
145		Struelens, Wu.....	Pt 5.....	L R E.....	O	(Louisville	
57		Sullivan, Dennis.....	11.....	L R W.....	O	Kinta il	
500		Flurlow, Harriet.....	15.....	L S C.....	O		8
519		Thompson, Tamar.....	10.....	12 W D.....	O		2

PART 3.—Persons Entitled to Vote at Elections for the Legislative Assembly Only.

75	Carey, John.....	11.....	13 W D.....	M F.....		8
175	Fraser, William.....	N ½ 10.....	L S C.....	M F.....		4
229	Hoggart, James.....	Part block B.....	Part 1.....	H H, M F.....		4
448	Piligar, John.....	11.....	11 W D.....	M F, H H.....		4
499	Stewart, Malcolm.....	11.....	L S C.....	M F.....		4
589	Williams, Richard.....	2.....	L R E.....	M F.....		4
590	Williams, Rowland.....	2.....	L R E.....	M F.....		4

Aggregate number of persons to serve on Juries..... 376

Total number of Voters:

Polling Sub-Division	No.	PART I.	PART II.	PART III.
No. 1.....		144.....	25.....	7
" " " 2.....		82.....	21.....	14
" " " 3.....		183.....	30.....	9
" " " 4.....		118.....	14.....	7

