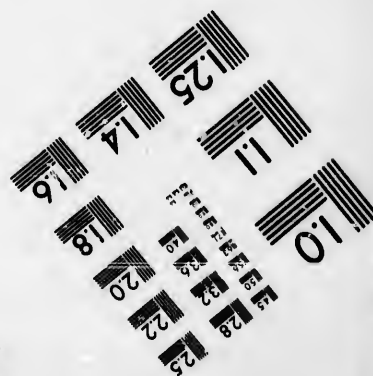
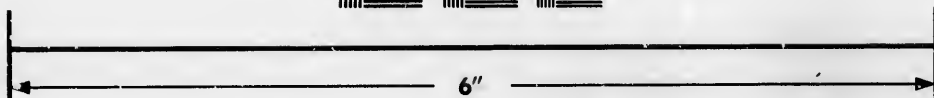
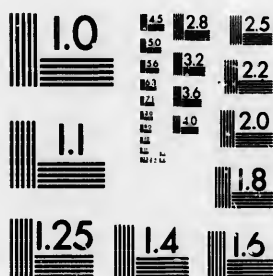


IMAGE EVALUATION TEST TARGET (MT-3)



Photographic
Sciences
Corporation

25 WEST MAIN STREET
WERSTER, N.Y. 14580
(716) 872-4503

**CIHM/ICMH
Microfiche
Series.**

**CIHM/ICMH
Collection de
microfiches.**



Canadian Institute for Historical Microreproductions / Institut canadien de microreproductions historiques

© 1986

Technical and Bibliographic Notes/Notes techniques et bibliographiques

The Institute has attempted to obtain the best original copy available for filming. Features of this copy which may be bibliographically unique, which may alter any of the images in the reproduction, or which may significantly change the usual method of filming, are checked below.

L'Institut a microfilmé le meilleur exemplaire qu'il lui a été possible de se procurer. Les détails de cet exemplaire qui sont peut-être uniques du point de vue bibliographique, qui peuvent modifier une image reproduite, ou qui peuvent exiger une modification dans la méthode normale de filmage sont indiqués ci-dessous.

- ☒ Coloured covers/
Couverture de couleur
- ☒ Covers damaged/
Couverture endommagée
- ☐ Covers restored and/or laminated/
Couverture restaurée et/ou pelliculée
- ☐ Cover title missing/
Le titre de couverture manque
- ☐ Coloured maps/
Cartes géographiques en couleur
- ☐ Coloured ink (i.e. other than blue or black)/
Encre de couleur (i.e. autre que bleue ou noire)
- ☐ Coloured plates and/or illustrations/
Planches et/ou illustrations en couleur
- ☐ Bound with other material/
Relié avec d'autres documents
- ☐ Tight binding may cause shadows or distortion along interior margin/
La reliure serrée peut causer de l'ombre ou de la distorsion le long de la marge intérieure
- ☐ Blank leaves added during restoration may appear within the text. Whenever possible, these have been omitted from filming/
Il se peut que certaines pages blanches ajoutées lors d'une restauration apparaissent dans le texte, mais, lorsque cela était possible, ces pages n'ont pas été filmées.

- ☐ Coloured pages/
Pages de couleur
- ☐ Pages damaged/
Pages endommagées
- ☐ Pages restored and/or laminated/
Pages restaurées et/ou pelliculées
- ☒ Pages discoloured, stained or foxed/
Pages décolorées, tachetées ou piquées
- ☐ Pages detached/
Pages détachées
- ☒ Showthrough/
Transparence
- ☐ Quality of print varies/
Qualité inégale de l'impression
- ☐ Includes supplementary material/
Comprend du matériel supplémentaire
- ☐ Only edition available/
Seule édition disponible
- ☐ Pages wholly or partially obscured by errata slips, tissues, etc., have been refilmed to ensure the best possible image/
Les pages totalement ou partiellement obscurcies par un feuillet d'errata, une pelure, etc., ont été filmées à nouveau de façon à obtenir la meilleure image possible.

- ☒ Additional comments:/
Commentaires supplémentaires:

There are some creases in the middle of the pages.

This item is filmed at the reduction ratio checked below/
Ce document est filmé au taux de réduction indiqué ci-dessous.

10X	12X	14X	16X	18X	20X	22X	24X	26X	28X	30X	32X
				<input checked="" type="checkbox"/>							

The copy filmed here has been reproduced thanks to the generosity of:

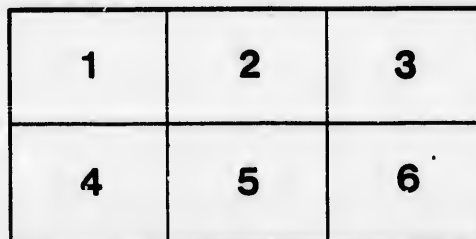
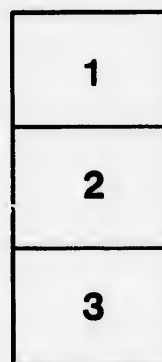
D. B. Weldon Library
University of Western Ontario
(Regional History Room)

The images appearing here are the best quality possible considering the condition and legibility of the original copy and in keeping with the filming contract specifications.

Original copies in printed paper covers are filmed beginning with the front cover and ending on the last page with a printed or illustrated impression, or the back cover when appropriate. All other original copies are filmed beginning on the first page with a printed or illustrated impression, and ending on the last page with a printed or illustrated impression.

The last recorded frame on each microfiche shall contain the symbol ➡ (meaning "CONTINUED"), or the symbol ▼ (meaning "END"), whichever applies.

Maps, plates, charts, etc., may be filmed at different reduction ratios. Those too large to be entirely included in one exposure are filmed beginning in the upper left hand corner, left to right and top to bottom, as many frames as required. The following diagrams illustrate the method:



L'exemplaire filmé fut reproduit grâce à la générosité de:

D. B. Weldon Library
University of Western Ontario
(Regional History Room)

Les images suivantes ont été reproduites avec le plus grand soin, compte tenu de la condition et de la netteté de l'exemplaire filmé, et en conformité avec les conditions du contrat de filmage.

Les exemplaires originaux dont la couverture en papier est imprimée sont filmés en commençant par le premier plat et en terminant soit par la dernière page qui comporte une empreinte d'impression ou d'illustration, soit par le second plat, selon le cas. Tous les autres exemplaires originaux sont filmés en commençant par la première page qui comporte une empreinte d'impression ou d'illustration et en terminant par la dernière page qui comporte une telle empreinte.

Un des symboles suivants apparaîtra sur la dernière image de chaque microfiche, selon le cas: le symbole ➡ signifie "A SUIVRE", le symbole ▼ signifie "FIN".

Les cartes, planches, tableaux, etc., peuvent être filmés à des taux de réduction différents. Lorsque le document est trop grand pour être reproduit en un seul cliché, il est filmé à partir de l'angle supérieur gauche, de gauche à droite, et de haut en bas, en prenant le nombre d'images nécessaire. Les diagrammes suivants illustrent la méthode.

errata
to

pelure,
on à



32X

Johnston

CANADIAN

JOINT FREIGHT

RECEIVED
JAN 3 1900
TAXES OFFICE
MONTREAL, QNT.

CLASSIFICATION

No. 11

TAKING EFFECT

JAN. 1ST, 1900

Superseding all Previous Classifications
and Supplements Thereto.

NOTE IMPORTANT CHANGES

TH
as add

CA

✓ Page

✓ "

✓ "

✓ "

✓ "✓ "

✓ "

✓ "

✓ "

F

5-71111
~~44444~~
~~44444~~

"A"

CANADIAN FREIGHT ASSOCIATION

RULING CIRCULAR No. 4

The following rulings have been made and will apply as additions to and modifications of

CANADIAN JOINT FREIGHT CLASSIFICATION

No. 11

Effective January 1st, 1900

- ✓ Page 16.—Benzine, or Benzole.
This freight is not to be taken for shipment by water without special authority in each case.
- ✓ " 29.—Excelsior.
This freight is not to be taken for shipment by water without special authority in each case.
- ✓ " 37.—Gasoline.
This freight is not to be taken for shipment by water without special authority in each case.
- ✓ " 41.—Hay.
This freight is not to be taken for shipment by water without special authority in each case.
- ✓ " 47.—Japan Dryer.—Same as Varnish.
- ✓ " 49.—Lard, in glass or stoneware, packed, O.R. 1....5
" in cans, loose, O.R. 2....5
" " crated or boxed. 3....5
" pails, tubs, boxes or bbls. 3....5
- ✓ " 62.—Oil.
Coal or Mineral Oil is not to be taken for shipment by water without special authority in each case.
- ✓ " 76.—Tinware, nested, solid.
Same rule as for Stamped Ware, nested solid—page 72.
- ✓ " 83.—Wood Fibre, dry, in bales.—Same as Excelsior.

For the Classification Committee.

JOHN EARLS,
CHAIRMAN.

*Alb
*Atle
*Bay
Bos
Bro
Can
Can
*Car
Cen
*Cen
*Cen
Cen
*Coa
Cun
Don
Erie
Gra
Inte
Kas
*Ken
King
Lak
*Lotk
Main
Man
Mich
*Mon
New
New
Niag
Nort
Orfc
Otta
Otta
Otta
*Pont
Princ
Queb
Queb
Salis
*South
Sydn
Tem
Toron
Unite
*Waba
And

ADOPTED BY

- * Alberta Railway & Coal Co.
- * Atlantic & Lake Superior Railway.
- * Bay of Quinte Railway Co.
- Boston & Maine Railroad (in Canada).
- Brockville, Westport & Sault Ste. Marie Railway.
- Canada Atlantic Railway.
- Canada Eastern Railway.
- * Caraquet Railway.
- Central Ontario Railway.
- * Central Railway Co. (N.B.)
- * Central Railway (Nova Scotia).
- Central Vermont Railroad (in Canada).
- * Coast Railway Co. of Nova Scotia.
- Cumberland Railway & Coal Co.
- Dominion Atlantic Railway.
- Erie & Huron Railway.
- Grand Trunk Railway System in Canada.
- Intercolonial Railway.
- Kaslo & Slocan Railway.
- * Kent Northern Railway.
- Kingston & Pembroke Railway.
- Lake Erie & Detroit River Railway.
- * Lotbiniere & Megantic Railway.
- Maine Central Railroad (in Canada).
- Manitoba & North-Western Railway.
- Michigan Central Railroad (Canada Division).
- * Moncton & Buctouche Railway.
- New Brunswick & Prince Edward Island Ry.
- Newfoundland Railway.
- Niagara, St Catharines & Toronto Railway.
- Northern Pacific & Manitoba Railway.
- Orford Mountain Railway.
- Ottawa, Arnprior & Parry Sound Railway.
- Ottawa & Gatineau Railway.
- Ottawa & New York Railway.
- * Pontiac Pacific Jct. Railway Co.
- Prince Edward Island Railway.
- Quebec Central Railway.
- Quebec & Lake St. John Railway.
- Salisbury & Harvey Railway.
- * South Shore Railway Co.
- Sydney & Louisburg Railway.
- Temiscouata Railway.
- Toronto, Hamilton & Buffalo Railway.
- United Counties Railway.
- * Wabash Railroad (in Canada).
- And other Canadian Railways.

Previous issues of Canadian Joint Freight Classification.

- No. 1, Jan. 1st, 1884.
 - No. 2, June 1st, 1884.
 - No. 3, April 1st, 1885.
 - No. 4, May 10th, 1886.
 - No. 5, May 1st, 1888.
 - No. 6, April 15th, 1889.
 - No. 7, Feb. 10th, 1890.
 - No. 8, Oct. 1st, 1891.
 - No. 9, June 1st, 1893.
 - No. 10, Jan. 1st, 1896.
 - No. 10 (a), Sept. 1st, 1897.
-

Classification Committee for 1900.

JOHN EARLS, Chairman.
E. TIFFIN,
W. B. BULLING, Jr.,
F. J. WATSON,
J. HARDWELL,
W. P. HINTON,
W. WOOLLATT,
J. H. HANNA,
F. ZIMMERMAN,
C. A. JACQUES.

NOTE

TO AGENTS.—Special attention is called to the designation mark (§) indicating items of Traffic carried at OWNER'S RISK or *Released*, as the case may be. Rule No. 7 is to be strictly observed in connection with all such traffic.

CANADIAN JOINT FREIGHT CLASSIFICATION

NO. 11

APPROVED BY THE GOVERNOR-GENERAL-IN-COUNCIL, DEC. 19TH, 1899

IN EFFECT JANUARY 1ST, 1900

Superseding previous Classifications and Supplements thereto

Explanation of Terms and Characters used

The number of the Class is given opposite each article:—1, 2, 3, 4, 5, 6, 7, 8, 9, 10, stand for first, second, third, fourth, fifth, sixth, seventh, eighth, ninth and tenth classes respectively; $1\frac{1}{2}$ stands for once and a-half first class; D-1 for double first class; 3-1 for three times first class; 4-1 for four times first class; C.L. stands for carload; L.C.L. for less than carload; O. R. stands for owners' risk; S. U. stands for set up; K. D. stands for knocked down; S. D. stands for single deck; D. D. for double deck; N. O. S. stands for not otherwise specified; min. stands for minimum.

Articles not enumerated should be classed with similar or analogous goods.

A star (*) denotes a change or addition.

Special Regulations and Conditions

*RULE 1.—The minimum weight per car for ^{Minimum} carloads of 1st, 2nd, 3rd and 4th Class Freights, ^{C.L.} is 20,000 lbs.; and for 5th, 6th, 7th, 8th and ^{weights.} 10th Class Freights, 24,000 lbs., unless otherwise specially stated in this Classification and as per notes A, B, C and D below. These minimum weights are for ordinary cars not over 35 feet long (inside measurement). If longer or larger cars are required by shippers for freight in classes 1, 2, 3 and 4 the minimum C.L. weight will be 24,000 lbs., and in classes 5, 6, 7, 8 or 10, the minimum C.L. weight will be 30,000 lbs. Carloads to be entitled to C.L. rate, must be from one Shipper in one day, and on one shipping note to one Consignee at one destination (see also Rule 2). All cars should be loaded up ^{Cars loaded in excess of minimum.} to their full marked capacity. Cars of bulk or other freight loaded by shippers must not be loaded over ten per cent. above their marked capacity. If this is exceeded in any case, the Railway Companies reserve the right to charge the L.C.L. rates for the excess or to unload all overweight at shipper's expense, and forward same on another car at full L.C.L. tariff rate for the quantity loaded above the marked capacity. Cars without marked capacity must not be loaded with more than 24,000 lbs. Refrigerator cars, when required by shippers will be charged ordinary rates for 1st, 2nd, 3rd, 4th, 5th or 6th Class traffic, but if traffic lower than 6th Class be loaded the minimum charge will be C.L. at 6th Class rate, unless otherwise instructed.

C.L. minimum for short box cars.

*NOTE A.—Unless otherwise specially stated herein, the minimum carload weight to be charged on 5th, 6th, 7th, 8th and 10th Class Freight when loaded in box cars under 30 ft. long, outside measurement, will be 20,000 lbs. per car; and in box cars 30 ft. long and up to and including 35 ft. long will be 24,000 lbs. per car.

Exceptions.

*NOTE B.—The minimum C.L. weight per car of Lumber, Cooperage Stock (except Hoops and Heading), Poles, Posts, Cordwood, and other Rough Forest Products (except otherwise specially provided herein), also Grain, Flour, Stone, Sand, Gravel, Clay, Scrap Iron and Steel, Pig Iron, Billets and Blooms, Cement, Ashes, Brick, Sewer Pipe (Earthen), Plaster, Coal and Coke, will be 30,000 lbs., except cars of less marked capacity, in which case the marked capacity, but not less than 24,000 lbs., will be the minimum. Hoops and Heading, minimum 24,000 lbs. Staves, 30,000 lbs. Mixed cars Hoops, Heading and Staves, 30,000 lbs. per car.

*NOTE C.—Long Timber, Lumber, Telegraph or other Poles, etc., requiring two or more cars for carriage (when authorized to be taken), will be charged a minimum of 30,000 lbs. for the first car, and 20,000 lbs. for each additional car.

When minimum weights are reduced.

*NOTE D.—In cases where the minimum weights are specially reduced below those authorized in this rule, the reduced minimum will be understood to apply on ordinary cars of not over 35 feet long (unless otherwise specially provided); if longer box cars or racked platform cars are used, the minimum in such special cases, for freight in classes 1 to 5 inclusive, will be 25% over the reduced minimum, and in classes 6 to 10 inclusive, 20% over the reduced minimum, unless otherwise specially provided.

Mixed Freight, C.L.

*2. Mixed freight will not be forwarded at C.L. rate, but each description must be weighed and charged for as per Classification, except as otherwise provided for herein; but when a number of different articles of the same class in C.L. (except Live Stock, Petroleum Oil in bbls., crude or refined, including Lubricating Oil, Benzine, Gasoline, Naphtha and Varnish in bbls.; also Turpentine in bbls.) are shipped at one time, by one shipper to one consignee and destination, in carloads, they shall all be taken at the rate per 100 lbs. for such class in carloads. If the articles provided with an L.C.L. and C.L. classification are of more than one class, the carload rate and minimum carload weight of the article in the highest class shall apply on all the articles that make up the carload—actual weight to be charged if over the minimum weight—excepting that when any straight shipment of one class equals or exceeds the minimum C.L. weight, C.L. rate for such lot may apply, and the other articles take the L.C.L. class rate to

which
5th a
of le
Vehi
20,000
Speci
will a
not
to en
quan
weigh
day,
consig
Agen
load s
consig
arriva
only
entire
cept r
charg
of the
rate r
way-h
le s-th
this C
consig
Cartag
*3.
weigh
consig
on one
carload
may b
noted
weight
C.L. ra
for the
full car
be load
subject
weight
loaded
This
cultural
Vehicle
Empty
Hay, S
Iron, M
produc
all bull
also all
the full
traffic
classes
lots for
charged
4. Fr
signee,

which they belong. In cases of mixed cars of 5th and higher class freight, having a minimum of less than 20,000 lbs., such as Furniture or Vehicles, the minimum for the mixed car will be 20,000 lbs. at the highest class rate. When Special Commodity Tariffs are in effect the rates will apply only to the commodities named, and not to other articles of the same class. In order to entitle a shipment to the carload rate, a quantity not less than the minimum carload weight must be delivered at one station, in one day, on one shipping note, consigned by one consignor, to one consignee and destination. Agents at destination will not distribute carload shipments of property among two or more consignees. Agents will not send notice of arrival to more than one party, and will make only one expense bill for the charges on the entire carload. In case one party will not accept notice of arrival as consignee and pay the charges on the entire carload and take delivery of the same, agents are required to make separate notices and expense bills, and correct the way-bill and collect on each shipment at the less-than-carload rates. The carload rates under this Classification are not applicable on freight consigned to Ry. Agents or to the Company's Carriage Agents for delivery to various parties.

*3. When more than the minimum carload weight of one article is shipped in one day by one consignor to one consignee, at one destination, on one shipping note, the established rate for a carload will apply on the entire lot, although it may be less than two full carloads (except as noted in latter part of this rule); the actual weight of the balance to be charged for at the C.L. rate, reference being made on the waybill for the balance of the lot, to the waybill for the full carload or loads. The first car, or cars, must be loaded to its, or their, full capacity, and be subject to the established rules for minimum weights. Actual weight of the balance, provided loaded in box car, to be charged C.L. rate.

More than
one C.L.
in one
shipment.

This rule will not apply on shipments of Agricultural Implements, Machinery, Live Stock, Vehicles, Furniture, Woodenware, Baskets, Empty Barrels, Casks or Boxes, Flour, Grain, Hay, Sea Grass, Straw, Coal, Pig Iron, Scrap Iron, Mill Feed, Lumber and other rough forest products, Joiner's Work, Lime, Brick, etc., and all bulk freight commonly carried in car lots; also all light or bulky goods which will not load the full minimum C.L. weight provided for the traffic being shipped, nor on any freight in classes 6 to 10 inclusive. In all such cases excess lots for which an extra car is necessary will be charged at the L.C.L. rates.

A smaller
lot not to be
charged
more than a
larger lot of
same freight.

4. Freight from one Shipper to one Consignee, in one car, should not be charged more for

a smaller than for a greater quantity where varying quantities of the same description of goods are classed differently. For instance: 129 bbls. apples or under should not be charged more than for 130 bbls.; 140 bbls. flour should not be charged more than for 150 bbls.; nor should an L.C.L. weight at a higher class be charged more than the sum for a C.L. where C.L. classification of the same freight is given.

When no C.L. rating given.

5. Where C.L. rating is not specified, the classification given is to apply irrespective of quantity.

Bulky articles requiring flat cars.

*6. All articles, except otherwise specified herein, will be taken at actual gross weight and class rate for each shipment, provided however, that any article too bulky or too long to be loaded in an ordinary box car, and requiring a platform car for carriage, will be charged actual gross weight as per classification, but in no case will the charge for the same be less than 6,000 lbs., at first class rate.

Articles at owner's risk, and released.

7. All articles marked at O.R. in this Classification, must be so receipted for by Agents, and the words OWNERS' RISK written in full on the Shipping Notes and Receipts. Articles marked RELEASED must also be so receipted for and Shippers or Owners must duly execute a Release in Duplicate on the Company's Forms. Provided, however, that in cases where shippers decline to accept such receipts endorsed "owner's risk," or to sign such releases, the goods may be received for shipment on ordinary shipping notes and receipts without above endorsement at 50 per cent. in addition to the rates, which would be charged if shipped at owner's risk ^{and} released, with the exception of plate or mirror glass, which will be as specified herein.

Articles only taken by special contract.

8. Special attention is directed to articles marked as "Not taken unless by special contract, etc." Agents must always apply for rates, and for permission to carry such traffic before accepting or receipting for it.

Dynamite and other explosive compounds.

9. DYNAMITE, DUALIN, GUN COTTON, GIANT POWDER, HERCULES POWDER OR OTHER EXPLOSIVE COMPOUNDS not provided for in this Classification, will only be received for transportation at the option of each and every Railway Co. concerned, and under the special rules and regulations prescribed by each road over which this traffic is proposed to be transported.

Bulk freight to be receipted for "more or less, etc." Shippers to declare quantities loaded.

10. Grain, Bran, Feed, Malt, etc., in bulk, and all other bulk Freight, must always be receipted for "more or less," and these words written in full. Agents, however, must in all cases obtain from shippers a full statement or declaration on shipping bills of the correct

quant
each
tity,
with t
which
Whea
Feed
Feet (
Lath,
Stave
Poles,
and v
"dry,
ceipts
to be"
quant

11.
piece
Classes
in 6th
loaded
after t
loading
dollar
to the
day or
48 hou
days).
a cart
heavy
to, al
loaded
carted
special
Owne

12.
not be

13.
erty li
winter
note b
one o
tect t
pass t
charg
shippe
that a
damag
such c
fire."

of Tre
No
the Ne
ber 10

*14.
Vehic
must
inches

quantity of all bulk freight loaded in or on each car: such declaration should show quantity, weight or measurement, in accordance with the common or commercial standard under which such traffic is sold, such as:—Bush. Wheat, Peas, Barley, Potatoes, etc. Tons Bran Feed, etc. Square Feet, or Toise, Stone, etc. Feet (board measure) Lumber, etc. Thousands Lath, Shingles, Staves, etc. Cords Wood, Stave Bolts, Bark, Posts, Shingle Bolts, Slabs, Poles, etc.—with statement as to description, and whether “green,” “partly seasoned,” or “dry,” of all forest products. In signing receipts, agents must be particular to note “said to be” as to quality and “more or less” as to quantity.

11. All heavy freight, of 2,000 lbs. or over per piece or package, of, 1st, 2nd, 3rd, 4th and 5th Classes; also heavy freight and all bulk Freight, in 6th, 7th, 8th, 9th and 10th Classes, is to be loaded and unloaded by Owners, within 48 hours after the car has been placed for loading or unloading, otherwise a charge of not less than one dollar per car per day will be made, in addition to the Freight charges, for Car Service for each day or part thereof the car is detained over the 48 hours (except for Sundays and legal holidays). At points where the companies provide a cartage service, it must be understood that heavy articles, and bulk freight above referred to, also all freight specified herein “to be loaded and unloaded by owners” will not be carted or handled by the Companies, unless by special arrangement, and at the expense of the Owner, in addition to the rate.

Heavy freight and bulk freight to be handled by owners.

12. Bulk freight in less than car loads will not be taken.

Bulk freight L.O.L. not taken.

13. When Fruit, Vegetables and other property liable to damage by frost, are shipped in winter (Nov. 1st to April 30th, except as per note below), one man will be passed free with one or more cars to care for the fires and protect the property from freezing. No return pass to be given. The stoves, if returned to be charged same as “empties returned.” When shippers put stoves in cars, Agents must see that all reasonable precaution is taken against damage to the car or train, and receipts in all such cases must be given at “Owner’s risk of fire.” Passes will not be given to men in charge of Trees or Shrubberty.

Perishable property in winter.

NOTE.—Perishable Freight for Manitoba and the North-West must be prepaid between October 10th and May 20th.

*14. Agricultural Implements, Machinery, Vehicles, and other bulky traffic on flat cars, must not be loaded to exceed eleven feet six inches in extreme height above the top of the

Height and width of loads on flat cars.

rail, and nine feet in extreme width (except by special authority), and should be well secured by iron rods, wire, or wooden bars passing over the load and connecting the upper ends of the stakes in such a manner as to prevent spreading. When these conditions are not complied with the companies reserve the right to either refuse the freight, or to remove any excess from the car and forward it on another car, at full rates as per classification.

Meaning of terms
"Racked,"
"Crated,"
"Boxed,"
etc.

*15. Articles offered to carriers for transportation at the rating provided for same in this classification when racked or crated, must be enclosed to an extent sufficient to hold the frame-work together and protect the property during the process of transportation. Nailing strips on or to the articles, forming partial protection only, will not be sufficient to entitle the property to the rating provided therefor when racked or crated. Freight not sufficiently protected as above should not be received.

In all cases, unless otherwise specially provided, the terms "in boxes, barrels or packages," must be understood to mean that the boxes, barrels or packages must be complete with headings of same material, so as to thoroughly protect the contents—canvas or wire headings not being considered sufficient. If not shipped as above the packages will be rated as crates. The term "crated" or "in crates" means enclosed on all sides by wood frame work or slats. The terms "boxed," "in boxes" and "in barrels," are intended to mean completely enclosed in wood, unless otherwise specially provided. The term "in wood" means liquids in bbls., kegs or casks. Shipments in basket work packages (woven wood and wire) are ratable as crated.

The term "nested" means a series of similar articles nested, or enclosed one within the other. The term "jacketed" means an outer covering or jacket of veneer, wood or wood fibre, or tin securely protecting the inside can or other package.

Articles boxed, crated, etc., not fully specified.

16. Freight provided for in this Classification "boxed," and not provided for in crates, bales, bags or bundles, will take when shipped in crates, one class higher than in boxes; and when shipped in bales, bags or bundles, one class higher than in crates. When not otherwise specified in this Classification, the rating on shipments in boxes will apply on shipments in barrels or kegs. Shipments provided for "in barrels" and not in kegs, kegs will take the same rating as barrels.

Packages containing more than one class.

17. Contents of all packages, as near as possible, must be stated on shipping notes, and any package containing articles of more than one class will be charged the rate for the highest classed article contained therein.

18.
care
ages
they
being
prop
inatio
that
after
incor
shipp
is dis
to co
accor
19.
ficatio
articl
shipp
class
set up
20.
weigh
pers a
when
an es
will a
*21.
be acc
is sati
ment
shippi
*22.
by exp
heavy
receip
23.
and in
weigh
*24.
this Cl
vice a
and de
*25.
pany's
2nd, 3
charge
freigh
to a m
single
*26, 2
ing ar
at actu
of each
taken
of cart
additio
perform
Agents

cept by
secured
ing over
s of the
spread-
omplied
o either
y excess
r car, at

ansport-
in this
must be
old the
property
Nailing
ial pro-
title the
or when
tly pro-

ly pro-
ackages,"
boxes,
ce with
roughly
eadings
shipped
crates.
ans en-
r slats.
in bar-
nclosed
rovided.
s., kegs
ackages
ated.

similar
e other.
covering
r tin se-
ackage.
ication
bales,
ped in
; and
es, one
other-
rating
oments
for "in
ke the

as pos-
nd any
an one
ighest

18. Agents at points of shipment will take care to assure themselves that contents of packages are actually what they purport to be; if they have reason to suspect that an attempt is being made to deceive the carrier, or avoid proper classification, they will require an examination of contents, or other sufficient evidence that they are correctly described, before or after receipting for same. Should freight be incorrectly described, and escape detection at shipping point, if the real character of the goods is discovered before delivery to consignee or to connecting road, charges must be collected according to proper classification.

Contents of
packages to
be correctly
described.

19. Unless otherwise specified in this Classification, parts or pieces constituting one or more articles offered for shipment at one time by one shipper to one consignee, will be rated at the class provided for the complete article, whether set up or K.D., as the case may be.

Parts or
pieces con-
stituting
one or more
articles.

20. All articles will be charged at *gross weight*, without regard to weight given by shippers and inserted in bills of lading; except that when an article is classified to be accepted at an estimated weight, such estimated weight will apply.

Gross
weights to
be charged
for.

*21. Prepayment of freight charges must not be accepted upon any shipment, unless the agent is satisfied that the article upon which the payment is tendered is correctly described in the shipping note.

Prepay-
ment of
charges.

*22. Goods in paper packages should be shipped by express; or if by freight must be in oiled or heavy paper, well wrapped and corded and be receipted for at Owner's Risk.

Articles
in paper
packages.

23. All shipments are subject to examination and inspection as to correct description and weight.

Shipments
subject to
examina-
tion.

*24. All property shipped in carloads under this Classification will be subject to the Car Service and Switching charges of the forwarding and delivering Railways.

C.L. bulk
freight
subject to
car service
charges.

*25. At each point where the Railway Company's Cartage Agents perform cartage on 1st, 2nd, 3rd and 4th class freight, an additional charge of 1½ cents per 100 lbs., and on 5th class freight 1 cent per 100 lbs. will be made, subject to a minimum charge of 10 cents cartage for any single consignment.

Minimum
charge for
cartage.

*26. Small consignments of one class, or including articles of several classes, will be charged at actual weight according to the classification of each article, but no single shipment will be taken for less than 100 lbs., 1st class, exclusive of cartage, minimum charge 35 cents with an additional charge of 10 cents for each cartage performed by the Railway Company's Cartage Agents.

Small con-
signments.

CLASSIFICATION

A star (*) denotes a change or addition.

A

	L.C.L.	C.L.
Acetate of Lime, in packages.	4....	7
Acetylene Gas. Only taken by special agreement.		
*Acetylene Gas Generators. Same as Gas Generators.		
†Acids, in carboys, O.R.	1....	5
† “ in iron drums, O.R.	4....	5
† “ Dry, in boxes or bbls	2....	4
†* “ Acetic, in demijohns, boxed, O.R.	1....	3
“ “ in bbls.	3....	5
† “ in demijohns, all covered with wicker, O.R.	1½	
“ in tank cars	5
Acids must not be taken for shipment by water, unless by special contract.		
Acorns	2....	4
Actinolite	4....	10
Adamant Plaster.—Same as Plaster.		
†Advertising Boards in bundles, O.R., prepaid..	2....	4
“ Cards and Almanacs, in boxes, prepaid	2....	4
“ “ or Labels for Soap.—See Soap.		
† “ Labels, etc., in bags or bundles, O.R., prepaid	1....	4
† “ glazed and framed, O.R., prepaid, boxed or crated	1....	4
“ Labels, Pictures, etc., when shipped in same or separate packages with and when for advertising said goods, at same rates as the goods.		
“ Racks (sheet iron), nested, crated or boxed	1½	
Aerated Waters.—Same as Ale.		
Agate Ware, not otherwise specified, boxed ...	1	
“ “ nested, boxed or crated	2....	5
Agolite or Mineral Pulp.	4....	7
†AGRICULTURAL IMPLEMENTS, as follows (subject to note at foot of this article):		
Binders.—Binder Trucks or Sheaf-Carriers, set up	D1	
“ K.D.	2	
Corn Cutters	D1	
“ Shellers, hand, set up	1	
“ “ K.D. (tables, wheels and cranks removed)	2	
“ “ N.O.S., K.D. sufficiently to be loaded in box cars.	1	
* “ “ N.O.S., on flat cars.—Same as Threshers.		
“ Planters, set up.	D1	
“ “ handles detached and tied to frame	1	

N

C.L. C.L.
 4....7

 1....5
 4....5
 2....4
 1....3
 3....5

 1½
5

 2....4
 4....10

 2....4
 2....4

 1....4
 1....4

 1½

 1
 2....5
 4....7

 D1
 2
 D1
 1
 2

 1

 D1
 1

A—Continued.		L.C.L.	C.L.
AGRICULTURAL IMPLEMENTS—Continued:			
Corn Planters, K.D. flat, in bundles.....	2		
“ “ hand, in bundles	1		
“ “ “ in crates or boxes	2		
Cleaners, Grain	D1		
* Clover Hullers, Huskers, or Mills. Same as Threshers or Separators.			
Crushers, Clod	1½		
“ Grain	1		
“ Grain, hoppers off	2		
Cradles, Grain, set up	4-1		
“ “ K.D. and boxed	D1		
* Cultivators and Weeders—set up	D1		
“ “ K.D.	2		
“ “ Hand, set up	D1		
“ “ K.D.	1		
* Cutters—Straw and Ensilage, set up	1		
* “ Straw and Ensilage, handles, feed boxes, carriers and wheels, (if out- side main frame) off	2		
“ “ K.D. flat	2		
* “ Root, or Pulpers, set up	1		
“ “ Handles and small parts de- tached, legs off or on	2		
* “ C.L. (minimum 16,000 lbs.)	4		
* Disc Sharpeners, boxed or crated, S.U.	1		
* “ “ K.D.	2		
Drills or Seeders, set up	D1		
“ Handles, poles, whiffletrees, levers, etc., detached and bundled or crated (wheels on or off)	2		
Fanning Mills, set up (with or without baggers) ..	D1		
* “ “ Common cars 35 feet long and under; minimum 12,000 lbs ..	4		
“ “ Furniture or hay cars, or rack- ed platform cars; min. 20,000 lbs.	4		
“ “ K.D. and tied in bundles	1		
* “ “ K.D. (min. C.L. 20,000 lbs.)	1....6		
Harrows, Wooden, set up	D1		
“ “ K.D. in bundles	1		
“ “ Iron, set up	1		
“ “ K.D. in bundles	2		
“ “ Disc, set up	1		
“ “ K.D.	2		
Harrow Frames, without teeth, K.D. in bundles	2		
Hay or Straw Stackers, or Rickers, K. D. flat, tied in bundles, wheels racked	1		
Hay Carriers, in pkgs.	1		
Hay Loaders, K.D. and closely packed	1		
Hay Pitchers, K.D.	1		
Hay Tedders, set up	D1		
“ “ shafts off and wheels detached ..	2		
Manure Spreaders, on wheels, set up	1½		
“ “ wheels off, K.D.	1		
* Mowers, Field, set up	1		
“ “ K.D.	2		
* “ “ Lawn, set up	1½		
“ “ Lawn, crated or boxed	2		

AGRICULTURAL IMPLEMENTS—Continued :	
Ploughs, Common, set up.....	D1
“ “ K.D., handles detached and tied in bundles.....	2
“ Gang, Shovel or Sulky, set up.....	D1
“ Gang, Shovel, Sulky or Riding, seats, poles, etc., taken off and bundled or crated (wheels and levers on or off)...	1
* Plough Beams, wood or iron.....	3
Potato Diggers—common, set up.....	D1
“ “ K.D., handles detached and tied in bundles.....	2
Powers, Dog.....	D1
“ Horse, Pitts or Sweep.....	1½
“ “ Tread or Endless Chain.....	3-1
“ “ Tread Mills K.D flat.....	2
“ “ K.D.flat and loaded in box cars	2
* “ “ N.O.S., set up.....	1
* “ “ K. D., (Gear wheels must be detached from Frame of Sweep Power).....	2
“ Steam (Portable Engines)—See Machinery.	
* “ Tread, on flat cars, minimum 5,000 lbs. each (subject to Rule 4).....	1
* Presses, Hay, loaded in box cars.....	3
Rakes, Horse, set up.....	1
“ “ K.D. (teeth off and shipped in bdl.).....	2
“ Hand, Wooden, set up.....	1
“ Hand, Wooden, K.D., in bdl. or crated	2
Reapers, Single (or Harvesters), K.D.....	2
Reaper and Mower Knives—See Hardware....	
Reaping and Mowing Machines (combined) shipped in pieces.....	1
* Reaping and Mowing Machines. K.D., crated	2
* Rollers, Field or Land, set up, N. O. S.	1
* “ “ “ K.D., seats and shafts off and bundled.....	2
* “ “ “ Iron or steel, set up....	2
* “ “ “ Shafts and seats off and bundled	3
* “ Lawn or Garden (wood).....	1
* “ “ Iron or steel.....	2
Seeders—Same as Drills.	
Scufflers—Same as Cultivators.	
Sowers, Hand, Grain or Seed, set up.....	D1
“ “ “ K. D.....	1
Sweep Rakes, K. D. flat, tied in bundles, wheels racked.....	1
* Threshers or Separators on flat cars, minimum 5,000 lbs. each, actual weight if over 5,000 lbs. (Subject to Rule 4)	1
Threshers or Separators, K.D., and loaded in box cars.....	1
Agricultural Implements, not otherwise specified, light and bulky.....	D1

AGRI
*Agri

*

Air E
Alab
Alcoh
Ale a
+Ale,Ale, I
I

*Almo

Almo
Alum

“

*Alum

*Alum

*Amr

+*Amr

*

+*Amr

“

“

“

“

+*Amr

t

+*Anat

Anch

Anill

Anill

“

Anim

+*Anim

* “

+ “

+*Annat

* “

Anthr

*Antin

AGRICULTURAL IMPLEMENTS—Continued:

*Agricultural Implements, all kinds, N.O.S., C.L.	
minimum 20,000 lbs..6
* " " " mixed cars (including	
Cutters and Fanning	
Mills), min. 20,000 lbs.6

NOTE.—Agricultural Implements are at Owner's risk of breakage and chafing, and loss of small parts, in each and every case.

Air Brake Appliances.....	3....5
Alabastine.....	4....7
Alcohol, spirit, or wood - Same as Liquors.	
Ale and Beer Preservers or Coolers.....	1
†Ale, Beer, and Porter (bottled) in open cases,	
O.R. of damage and	
pilferage, released ...D1	
† " " (bottled) in boxes or	
barrels, O.R.....	3....5
† " " in wood, O.R. ferment-	
ing, freezing or leakage	3....5
† " " mixed cars, bottles	
packed in boxes or	
barrels, and in wood..5
Ale, Beer and Porter must be prepaid between	
1st November and 30th April.	
*Almond, or other Nut Shells, in bags or bbls.	
prepaid (C.L. minimum 20,000 lbs.).....	3....5
Almonds - See Nuts.	
Alum, in boxes.....	2....4
" in barrels or casks.....	3....5
*Alumina (crude mineral) in bags, boxes or bbls.	3....5
*Aluminum, in sheets, bars, ingots or castings, bxd.	1
* " Ware, N.O.S. in boxes or bbls.....	1
†Ammoniacal Liquors or Waters, in wood (in bulk)	3....4
" Waters, in carboys, O.R.....	1....4
" " in bottles, packed in wood	1
* " " in iron drums or tank cars.	3....5
†Ammonia, Anhydrous, Liquid, in iron or steel	
drums or tubes, O.R., released.....	2....4
" Carbonate, in jars, packed in wood..	1
" " in kegs.....	2....4
" Liquid, in tins, boxed.....	1....4
" Sulphate of, in casks, bbls. or drums	3....4
†Ammunition, N. O. S. Taken by special contract only.	
†Anatomical Charts, O.R., boxed.....	1
Anchors.—See Iron.	
Aniline Oil, in cans, packed in wood.....	3....4
Aniline Salts in boxes.....	2....4
" " in kegs, bbls. or casks.....	3....4
Animal Pokes.....	1....6
†Animals Stuffed—See Stuffed Birds, etc.	
* " Heads, Mounted, O.R., prepaid.....D1	
† " " in the rough, in pkgs., O.R., prepd.	1½
†Annato, in glass, O.R.....	1
* " in stone jars, packed in wood.....	3....5
Anthracine (dry), in barrels.....	2....4
*Antimony.....	3....5

*Apple Parers, crated or boxed	2
Anvils—See Iron.	
Apples—See Fruits.	
†Aquariums, boxed, O.R. (C.L. min. 20,000 lbs.)..	3-1....3
Archery, in boxes	D 1
Argols	3
*Arrowroot, in boxes or barrels	2
Arsenic, in boxes or barrels	1
“ crude, in barrels	2....4
*Artificial Flowers.—See Millinery Goods.	
Artificial Stone	3....5
†Artists' Material, O.R.	1
†Art Pottery, O. R., boxed	1
Asbestos, Manufactured, in packages	2....4
“ (crude)	3....6
“ Ore or Fibre, for paper stock	3....5
“ Cement	4....10
“ Sand	4....10
“ Wall Plaster	4....10
“ Plasterers' Material	4....10
“ Boiler or Pipe covering, in bags, crates or boxes	3....5
Ashes, Pot, Pearl and Soda, in bags, boxes, barrels or casks	4....5
“ Coal or wood, in bulk,10
(For Potashes see also page 66.)	
Ashes—C.L., in bulk.	
An allowance for shrinkage of weight in transit of 1,000 lbs., between November 1st and April 30th, and 2,000 lbs. between May 1st and October 31st, to be made at point of origin, or at first scale point.	
Ash Boilers and Kettles	2....4
Asphaltum or Asphalt Coating, in bags or kegs	3....5
“ “ “ in bbls. or bulk	4....10
Axes, in boxes barrels or casks	3....5
Axes—with handles, in cases	3....5
Axle Grease, in cans or buckets	3....5
“ “ in boxes, barrels or casks	4....5
Axles, Iron, See Iron.	
“ Wood	3....6
Awnings.—See Tents.	
Awning Frames, Iron, K. D., in bundles	3....5

B

Babbit Metal	3....5
Baby Jumpers, in boxes	1
Backing, for Picture and Looking-glass Frames, in bundles	4....7
Bacon.—See Meats.	
Baggage, Military. By special contract only.	
Baggage Trucks or barrows.—See Vehicles.	
Bags and Bagging, in bales	3....5
Bags, in bags	2....5
“ used in transporting Flour Grain or Vegetables over same Road.—See Empties Returned.	
*Bag Holders, iron or wood, crated or boxed	2....5
Baking Powder	2....4

Ball
†*Balls
†* “
“
Balsa
Balus
Bamb
Bamb
†Band
†* “
†* “
Barbe
Barill
†Bark,
* “
“
“
Barley
*Barrel
* “
“
“
Barrel
Baryte
Basket
“
“
“
“
“
“
“
“
Basket
W
Bath E
Bath T
“
* “

3-1....3
D1

3

2

1

2....4

3....5

1

1

2....4

3....6

3....5

4....10

4....10

4....10

4....10

3....5

4....5

....10

2....4

3....5

4....10

3....5

3....5

4....5

3....6

3....5

3....5

4....5

3....6

3....5

3....5

4....5

3....6

3....5

3....5

4....7

3....5

1

4....7

3....5

1

4....7

3....5

2....5

2....5

2....5

2....5

2....5

2....4

2....4

		B—Continued.		L.C.L. C.L.	
		Ball Bearings, iron or steel (for anti-friction purposes), boxed.....	3		
3-1....3	D1	* Balls, Sportsmen's glass, in boxes or bbls., O.R., prepaid (C.L. min. 20,000 lbs.).....	2....4		
3		* " or Birds, clay, Sportsmen's, in boxes or bbls., O.R., prepaid (C.L. min. 20,000 lbs.).....	3....5		
2		" Cricket, Baseball, etc.	2		
1		Balsam (crude gum), in bbls.	3....5		
2....4		Balusters.—See Joiners' Work.			
3....5		Bamboo, in bundles or cases.....	D1		
1		Bamboo Fibre, pressed in bales.....	2....4		
1		* Band Boxes, not boxed or crated, O.R.....	4-1		
2....4		* " " nested and crated or boxed, O.R.....	D1		
3....6		Barbers' Poles, boxed.....	2		
3....5		Barilla.....	2....4		
4....10		* Bark, Extract of, in casks, O.R.....	2....4		
4....10		* " Tanners, box cars under 30 feet, minimum 18,000 lbs., 30 feet and up to 35 feet 20,000 lbs., over 35 feet 24,000 lbs. Racked platform cars 24,000 lbs.....	7		
4....10		" Ground, in barrels, casks or sacks.....	3....5		
4....10		" Slippery Elm, in boxes, barrels or bundles	1		
4....10		Barley, Pearl, Pot and common.—See Grain.			
3....5		* Barrels, Empty.—Ale, Oil and other iron hooped barrels, casks or kegs, prepaid	1		
....10		* " " wooden hooped barrels, casks or kegs, prepaid.....	1½		
		" " all kinds, C. L. minimum 20,000 lbs., prepaid.....	10		
		" " returned.—See Empties R't'd.			
2....4		Barrel Covers.....	1....7		
3....5		Barytes.....	3....5		
4....10		Baskets, wicker, willow or rattan.....	4-1		
3....5		" wicker, willow or rattan, nested in bundles or crated.....	D1		
3....5		" stave and splint, nested, handles off or turned down.....	1½		
3....5		" round, splint, side handles, nested.....	1½		
4....5		" Laundry, with wooden bottoms, nested, in bundles or crates.....	1		
3....6		" Market, splint, end handles, partly nested, coiled in bundles.....	D1		
3....5		* " Strawberry, Raspberry, and other small fruits, splint, nested in bundles or crates.....	1½		
3....5		" flag, for mechanics' tools, nested.....	D1		
1		" delivery, with compartments for bottles.....	3-1		
4....7		" over handled, in bundles, with ends placed in each other.....	3-1		
		" closely boxed.....	1½		
		" all kinds, C. L. minimum 20,000 lbs.....	10		
3....5		Basket Material, N.O.S. (not Rattan, Reed or Willow).....	4....10		
2....5		Bath Brick, in barrels or boxes.....	3....5		
		Bath Tubs, wood, tin, iron or copper, N. O. S.....	D1		
		" wood, tin, iron or copper, nested or boxed.....	1		
2....5		* " wood, tin, iron or copper, nested or boxed.....	1		
2....4					

Bath Tubs, steel (copper lined).—Same as Iron	
Bath Tubs,	
“ iron (enamelled).—Same as Iron	
Bath Tubs,	
“ in carloads, common cars, 35 ft. long	
or under, minimum 16,000 lbs. In	
furniture or hay cars, or racked	
platform cars, minimum 20,000 lbs.4
‡Batting, in bundles, O.R.	D1
“ in bales or cases	1
Baseball Bats, in bundles	2
“ in boxes	3
‡Bay Rum, in glass or stone, packed in wood, O.R.	1
“ in wood	2
Beans.—See Grain.	
Bedding.—See Household Goods.	
*Beef Extract, in glass or earthenware, packed	
in boxes or bbls.	1....3
“ “ in cans, boxed	2....3
“ “ in bulk, in bbls	2....3
Bee Comb, or Bee Comb Foundation, in boxes	2
*Bee Hives, set up (minimum C.L. 16,000 lbs.)	D1....4
“ nested (minimum C.L. 16,000 lbs.)	1....4
“ K.D., in bundles, or packed in boxes	
or hives	3....5
Bee Smokers (tin bellows), in boxes or bbls.	1
‡Bees, in Hives, O.R., released	3-1....3
Owners to load and unload. Man in charge	
of carload lots passed free.	
Bees' Wax.—See Wax.	
Beer.—See Ale.	
Beets.—See Vegetables.	
‡Bellows, O.R., released	1
‡Bells, O.R.	1
“ Small, in cases.—See Hardware.	
“ Cow, in cases.	2
Bent Stuff.—See Carriage Goods.	
Benzine or Benzole, in wood.—Same as Coal Oil.	X
Berries.—See Fruit.	
*Bicycle Saddles, boxed	1....4
* “ Stands, Iron, in bundles or crates	2
* “ Stands or Racks, Wooden, K.D. flat or	
folded flat, in bundles or crates	1
** “ Tires, Rubber, flat, crated or boxed	1
** “ “ inflated, crtd. or bxd., O.R.	D1
* “ Wheel Rims, iron or steel, in pkgs.	1
“ “ wooden, in pkgs. (mini-	
mum C.L. 16,000 lbs.)	1....4
“ Wheel Rims, iron, steel or wooden, fin-	
ished, with rubber tires attached,	
crated or boxed	D1
“ Parts, N.O.S., boxed	1
‡Bicycles, Tricycles and Velocipedes, set up, O.R.	D1
+ Same crated, O.R.	1½
“ closely boxed	1
Billets, Wooden.—See Lumber.	
*Billiard and Pool Balls, boxed	3-1

	*Billiard Cues, boxed.....	1
	*Billiard Tables and fittings, boxed, O.R.....	1....3
	“ “ not boxed. NOT TAKEN.	
	*Billiard Table slate or slabs, crtd. or bxd., O.R.....	2....3
	*Binders' Boards, O.R.....	3....5
	*Bird Cages, in boxes, O.R.....	D1
	“ “ O.R., tops taken off and tops and bottoms nested, boxed.....	1
	Birds, Stuffed.—See Stuffed Birds, etc.	
	Biscuits, in boxes or barrels.....	2....4
	Bi-Sulphide of Lime, in bbls. or hhds.....	3....5
	Bi-Sulphide of Carbon:—Taken only by special agreement.	
	Bitters.—Same as Liquors.	
	*Blackboards, wooden, crated or boxed, O.R. ..	2....4
	“ “ Slate, etc.—See Slate.	
	*Blacking or Polish. Shoe or Stove, in bxs, or bbls.	2....4
	“ “ Curriers', in cans, jacketed.....	1....4
	“ “ “ boxed.....	2....4
	“ “ “ liquid, in bbls.....	3....5
	Black Lead, in bags, boxes, cans, kegs, or bbls.	2....4
	“ “ Crude, in casks.....	3....5
	*Blankets, in bales, O.R., chafing.....	1
	Bleaching Salts.....	4....5
	Blinds, Wooden.—See Joiners' Work.	
	Block Shells.....	3....5
	Blocks, Butchers'.....	3
	“ “ Maple.—See Lumber.	
	“ “ Pulley or Tackle.....	3....5
	Blowers, Iron Rotary.....	2
	Blue Stone or Vitriol, in kegs or boxes.....	2....5
	“ “ “ in bbls. or casks.....	4....7
	*Bluing, Liquid, Cake, or Ball, in cases or bbls..	2....4
	Boards, for winding cloth, etc., in bundles.....	4....7
	Boats, Racing.—Taken by special contract only.	
	* “ Steam Yachts or Launches, O.R., released, requiring a flat car for carriage. See rule 6.	
	* “ Steam Yachts, in box cars.....	4-1
	* “ Sectional, taken apart, sections nested..	D1
	* “ Canoes, over 17 feet long, will be rated same as boats.	
	* “ Canoes, two crated together, min. 700lbs.	1
	* “ Canoes, three crated together, min. 800lbs.	1
	* “ Canoes, four or more nested together, and closely boxed (minimum 800lbs.)	1
	+ “ Canoes, O.R., released, loaded in box cars, loose, or crated separately, minimum 600 lbs. each.	1
	+ “ Skiffs and Pleasure Boats, 17 feet and under, estimated weight 800 lbs. each, O.R., released.....	1
	+ “ 20 feet and under, estimated weight 1,200 lbs. each, O.R., released.....	1
	+ “ over 20 feet. in box cars. estimated weight 2,000 lbs. each, O.R., released.....	1
	“ over 30 feet long. Taken by special contract only.	

B—Continued.

L.C.L. C.L.

Boats, or Sleds, for hauling stone or clay.....	3....6
“ Lumbermen's, and Batteaux, under 30 feet, in box cars, one boat 4,000 lbs., each additional boat in same car 2,000 lbs., O.R., released	1
“ Lumbermen's, and Batteaux, in box cars, C.L. min. 20,000 lbs., O.R., released.	10
“ of all kinds (except lumbermen's etc.), in box cars, C.L. minimum 20,000 lbs., O.R., released.	6
“ of all kinds, requiring a platform car for carriage. See rule 6.	
Bobbins.—Same as Spools.	
*Boilers (and fixtures, shipped together), loaded and unloaded by owners (min. C.L. 20,000 lbs.)	1....6
“ over 28 feet long. Taken by special contract only.	
“ Range, copper, O.R.	2....4
“ “ iron, O.R.	3....5
“ Stock Food	D1....4
Boiler Compound, in kegs or barrels	3....5
Boiler Flues or Tubes. Same as Iron Pipe.	
Boiler Plates.—See Iron.	
*Boiler Screens or Lining (perforated Iron)	1....5
Bolster Plates.—See Iron.	
Bolsters—Feather, Hair, etc.	D1
Bone Black	3....5
Bone Dust, in barrels or casks	3....5
Bones, in sacks or casks, less than 10,000 lbs.	3
“ “ 10,000 lbs. and over ...	4
“ in sacks, casks or bulk, C.L.	10
Bonnets.—See Millinery.	
Books, in boxes or cases	1
*Boots and Shoes, in trunks, O.R.	1½
“ “ in cases	1
Boot Crimps	1
Boracumine	3....5
*Borax	3....5
Bottles.—See Glassware.	
Bottle Wrappers—Paper, straw or wood, in bxs.	2....5
“ Caps, tin or metal foil	2
“ Capsules or Wrappers, wood, nested, in crates or bundles.	1....5
“ “ nested, in boxes	2....5
*Bovril and Bouillon (Extracts). Same as Beef Extract.	
*Bowling Alley Material—	
Floors and Racks, K.D.	3....6
Pins and Balls, crated or boxed	3
Bows.—See Carriage Goods.	
*Boxes, Wooden, Empty—	
“ “ collapsible or folding, K.D., or folded flat, in bundles or crates	3
“ “ Empty, nested, or with inside divisions for bottles	1
“ “ Common, in the white	1

B—Continued.

Boxes, Wooden, Cigar, crated	D1
“ “ “ boxed	1
“ “ “ Egg Cases and Carriers	D1
“ “ “ “ with	
wood or pasteboard compartments for each egg	1
“ “ “ Jewellery, boxed	D1
* “ “ Butter, strapped together with	
iron or wood	1
* “ “ Tobacco, Blacking and Salt	1
* “ “ Butter, Grease, Fig, Spice or Bail	1
“ “ Cheese	1
“ “ All kinds, C.L., min. 20,000 lbs.	10
Boxes, Paper, Empty—	
† “ “ not boxed, O.R.	4-1
“ “ boxed or crated	3-1
† “ “ nested and crated, O.R.	D1
† “ “ nested and boxed, O.R.	D1
† “ “ K.D. flat, boxed, O.R.	2
* “ “ Band Boxes.—See page 15.	
“ “ or Fibre, Butter Boxes, nested or	
unnested, crated or boxed	D1
“ Card or Wood Board (or cartons) with	
tin ends, K.D., flat, ends shipped	
separately or with the boxes	2
“ “ or Cardboard, for Tea, Salt, etc.,	
with tin or metallic lids, crated	
or boxed	D1
* “ “ pasteboard, for Tea, etc., with	
tin or metallic lids or covers,	
crated or boxed	D1
† “ “ or Pails, for oysters, candy, etc.,	
nested, in bundles, O.R.	1½
“ “ or Pails, for oysters, candy, etc.,	
nested, crated or boxed	1
“ “ Necktie cases, with inside holders	
for neckties, crated or boxed ..	D1
* “ “ or Fibreboard, N.O.S., same as	
Paper Boxes.	
* “ “ or Paper, all kinds, minimum C.L.	
20,000 lbs.	5
Box Stuff, in bundles or shooks	4....10
Brackets.—See Furniture.	
† Bran and Shorts, in boxes and paper sacks, O.R.,	
released	5....8
“ “ in bags or barrels, estimated	
200 lbs. per bbl.	5....8
Bran and Shorts, C.L.—Same rule as to Min-	
imum C.L. weight as for Flour and Meal,	
except in cases where car cannot contain	
30,000 lbs., in which case actual weight will	
be charged, but not less than 24,000 lbs.	
Brandy.—See Liquors.	
Brass Bedsteads.—See Furniture.	
“ “ Car Brasses or Bearings	2....5
* “ “ Castings, in the rough, over 100 lbs. each	3....5
* “ “ “ N.O.S., in boxes or bbls	2....4
“ “ in Sheets, Rolls, Rivets or Tubing	2....4

B—Continued.

L.C.L. C.L.

Brass Pipe Fittings & Valves, in bxs, kgs or bbls..	2....4
“ Scrap	3....6
“ Dross, Ashes or Filings	4....7
“ manufactured, not otherwise specified ..	1....4
† Bread, prepaid, O.R.	1
Brewers' Finings (liquid), in casks or bbls.	2....4
Bricks, Common	4....10
“ Fire	4....10
“ Terra Cotta fire-proofing	4....10
“ Vitrified, for paving	4....10
† “ for stove lining, loose, O.R.	1....7
“ “ “ in boxes or barrels, O.R.	3....7
Bridge-builders' Outfit, consisting of second-hand tools, ropes, pulleys, hoist-jacks, etc.	4....6
* Bridge Material—	
Combination Wood and Iron Bridges, K.D. ...	3....5
Brimstone.—Same as Sulphur.	
Bristles, in packages	1
Britannia Ware, boxed	1
Bromide of Ammonia, in boxes or barrels	2....4
“ “ Potash, “ “	2....4
“ “ Soda, “ “	2....4
Bromide, in iron drums	3....4
Bromine, in glass, packed in wood	1
Brooms, in bales, bundles or racks	1
* “ C.L., in common cars 35 feet long and under; minimum 16,000 lbs.4
“ “ in furniture or hay cars; min. 20,000 lbs.4
* “ boxed (C.L. minimum 20,000 lbs.)	2....5
† Broom Corn, pressed; in bales, O.R. (C.L. minimum 20,000 lbs.)	1... 5
“ Handles.—See Handles.	
* “ Racks, wooden (C.L. minimum 20,000 lbs.)	1... 6
† Bronze or Metal Ornaments. O.R.	1....4
“ “ Crated or boxed, O.R.	2....5
Bronze Powder, in cases	1
† Bronzeware, in boxes or cases, O.R.	1
Brush Backs, Wooden, in boxes	3....5
Brushes, in boxes	2....4
Buckets, Iron.—See Iron.	
“ Wooden.—See Woodenware.	
Buckwheat.—See Grain.	
Buckwheat Meal.—See Flour and Meal.	
* Buffalo Robes. See Furs.	
Buggies.—See Vehieles.	
Bug Killer (medicated land plaster, in bbls)....	4....7
† Bulbs and Roots, in packages, prepaid, O.R.	1
Bungs, Wooden, in bags	2....4
Bungs, Wooden, in boxes or barrels	3....4
† Burial Cases, Wooden or Metallic, O.R. released	1....4
“ “ C.L. Same min. wghts. as Furniture.	
Burlaps	3....5
Burr Stones or Blocks	3....5
† Butter, in crocks, jars, baskets or pails. O.R.	1....3
* “ “ in tubs, firkins, kegs, boxes or bbls., O.R.	
“ “ of weather	2....3
“ “ in crocks or jars, not taken unless packed in boxes or bbls.	

P—Continued. C

L C.L. C.L.

Butter Tubs and Firkins	1
“ “ nested covers in blds..	2
*Butter Tubs and Firkins. Min. C.L. 20,000 lbs	10
Butter Workers and Creamers, K.D.	1.
Butter Workers, set up	1½
*Butter Workers (steam power) for factories....	1
Buttons, in cases or boxes	1

C

Cabbage.—See Vegetables.	
Cabinets, Bath, K.D. flat, or folded flat, crtd. or bxd.	1...4
Cable—Telegraph or Telephone, on Reels.	3...5
Cables, Chain.—See Chain.	
Calamine, in packages.	3
+*Calcium, Carbide of, in hermetically sealed cans, O.R.	1...4
+* “ in tinned steel cans, O.R.	3...5
* “ in iron drums	3...5
* “ in tins, boxed.	2...4

This freight is not to be accepted for shipment by water, except by special authority in each case; and should always be kept from coming in contact with water. Each package must bear a conspicuous label reading—“CARBIDE OF CALCIUM, DANGEROUS IF NOT KEPT DRY.”

*Caloric Engines. See Machinery.

Camphene, in wood only, O.R. 1

This Freight must not be taken for shipment by water except by special contract.

Camphor Gum	1
Canada Plate	3...5
Candied Peel in cases	2...5
Candles, Tallow	3...5
“ Wax and Paraffine	3...5
Canes, Walking, in bundles	D1
“ “ in boxes	1
Cane Splints, in bundles	1

Canned Goods—Fish, Vegetables, Berries, Fruit, and Potted Meats. 3...5

Cannon and Cannon Balls. Taken by special contract only.

Cannons or Mortars (small for fireworks). 1

Same, boxed 2 |

*Cant Hooks and Peaveys, same as Cant Dogs—See Hardware.

Canvas, in Rolls 1 || “ in bales | 2 |

Caps, Percussion 1...3 || “ “ high explosive, not taken. | |

Capstans 2 |

*Carbide of Calcium.—See Calcium.

Carbon Points.—See Electric Light Carbons.

Carbon—Bi-Sulphide of.—Taken only by special agreement.

*Carbon, Hydro Carbon (Gas Drips) in iron drums. 3...5

+*Carboys, Empty, O.R. (C.L. min. 20,000 lbs.)... 1...6

Car Brasses.—See Brass.

*Cardboard.—See Paper.	
Cards, in cases.—Same as Stationery.	
Carpenters' Tools, in chests.....	1
†*Carpets and Carpeting, in bales, O.R. of chafing	1...3
Carpet Lining and Stair Pads.....	2...4
‡ " Sweepers, loose, O.R.....	D1
" " boxed.....	2
Carriages—See Vehicles.	
CARRIAGE GOODS, as follows:	
Axles—Iron, cased with wood, finished.....	1
Axle Beds, Reaches, Spring Bars, CutterKnees,	
Shaft Bars and Bob Runners, in the rough	3
Bows, in bundles.....	1
* Buggy Seats, finished, crated or boxed.....	D1
" " in white, nested, crated or bxd.	1
Carriage Stuff, not otherwise specified.....	2
Hubs.....	3
Hub-Blocks.....	4...10
Rims or Felloes.....	3
Running Gear, wheels off.....	1
Shafts, Tongues and Poles, unfinished in bdl.	3
‡ Shafts, Tongues, Poles—finished, O.R. chafing	1
* Spoke Billets, rived or split from the bolt....	4...10
* Spoke Wood Bolts.....	4...10
Spokes, in bundles.....	3
Thills, Finished.....	D1
" Unfinished, in bundles.....	3
Thimble Skeins.—See Iron.	
Wheels, Finished, without tires.....	1½
" Finished, with iron tires.....	1
" Unfinished, in white, without tires	1
" Unfinished, in white, with iron tires.	2
" in white (minimum C.L. 20,000 lbs.)..
" with pneumatic rubber tires, inflated.	D1
" rubber tires, solid.....	1½
Whiffletrees, Unfinished, in bundles.....	3
" Finished, O.R. chafing.....	1
‡ Carriage Goods and Bent Stuff, N.O.S.6
Cars, Hand, Push or Logging, set up.....	1...6
" " " K.D.....	3...6
* " Street, Horse, Electric or Cable.....	1...4
Car Pushers.....	3
Cartridge Shells, paper or metallic, empty....	1...3
Cartridges, paper or metallic (when authorized	
to be taken), closely and securely boxed...	1...3
Carts.—See Vehicles.	
‡Cash Registers—boxed, O.R. released.....	1
Cassia.—See Spices.	
*Castor Oil, in glass, boxed.....	1...4
‡‡ " in tin, bxd., or in casks, O.R. leakage	2...4
*Catsup. Same as Preserves.	
Cattle Food, Patent or Concentrated, in boxes,	
barrels or bags.....	3...5
*Cattle Food, Chopped Straw, Hay, Ensilage,	
Faramel, and similar common Cattle Food	4...8
Cattle Tails.....	2
Caviare (Fish Eggs), in kegs or barrels.....	1...2
Cedar Posts and Ties. Taken by special contract	
only.	

C—Continued.

L.C.L. C.L.

	Celluloid, in bundles.....	1....5
	“ in boxes.....	2....5
	“ Goods, in boxes.....	1
1	Cement, in sacks or barrels.....	4...10
g 1...3	Cereals, not otherwise specified, rolled pressed,	
2...4	cracked, dried or dessicated, in boxes	4...8
D1	* “ Same in bags or barrels.....	5...8
2	*Chain. See Iron.	
	Chalk, in boxes.....	2
1	“ in barrels or casks.....	4
3	Chandeliers—See “Gas Fixtures.”	
1	Charcoal, in sacks or barrels.....	3
D1	“ C. L., minimum 20,000 lbs. per car.....7
1	† Cheese in corks or jars, packed in cases, O. R.	2...4
2	† “ in boxes or casks, O.R. from weather... 3...4	
3	“ Presses—See Machinery.	
4...10	“ Safes, loose or in bundles.....	4-1
3	“ “ crated.....	3-1
1	“ “ boxed.....	D1
3	“ Setters.....	1
1	“ or Cream Vats, set up.....	D1
4...10	“ or Cream Vats—legs and detachable parts	
4...10	taken off and crated.....	1
3	Cheese Box Stock.....	4...10
D1	Chicken Coops, prepaid.....	D1
3	“ “ galvanized iron, K.D. in bundles	1
	“ “ Same, crated or boxed.....	2
1½	Chicory, in cases, bags or barrels.....	3...5
1	Children's Carriages, Sleds, etc.—See Vehicles.	
1	Chimney Pots, Zinc.....	D1
2	“ “ Earthenware.....	2...4
.....	† Chinaware, in boxes, barrels or casks, O. R. B.	1...4
D1	† “ in crates or hhd., O.R.B.....	2...4
1½	Chinese Lanterns (paper), folded flat, boxed....	D1
3	Chlorate of Potash, in kegs.....	3...5
1	Chloride of Lime, in boxes.....	3...5
....6	“ “ in casks or barrels.....	4...5
1...6	Chloride of Calcium, in boxes or barrels.....	1
3...6	“ “ in drums.....	3
1...4	* Chloride of Aluminum (liquid), in bbls.....	3...5
3	Chocolate, in boxes.....	2...4
1...3	Churns, loose.....	D1
	“ boxed or racked.....	1
1...3	“ loose, barrel, fixtures detached and bldd.	1
	“ Cradle.—Same as Barrel Churns.	
1	* “ All kinds C. L. same as woodenware..	
	Cider.—Same as Ale.	
1...4	Cider Mills and Presses.—See Machinery.	
2...4	Cigar Box Lumber, in bundles (other than Cedar)	4...5
	Same—Cedar.....	3...5
3...5	* Cigars and Cigarettes in cases, securely strapped,	
	or with iron straps or clamps on the ends,	
	O.R.....	1
4...8	* Cigars and Cigarettes in cases, not strapped, as	
2	above.....	D1
1...2	Cinnamon.—See Spices.	
	* Cisterns, Wooden, set up.....	D1
	“ “ K.D.....	3...5

Cisterns, Water Closet.—See Water Closet Tanks.	
Clams.—See Oysters.	
Clay, Fire Pottery, etc.	4...10
Clay Birds or Balls.—See Balls.	
†Clocks and Weights, boxed, O.R.	1
*Cloth Boards for rolling cloth, in bundles	4...10
Clothes Lines.—See Cordage.	
Clothes Pins in boxes	3...5
Clothes Wringers and Washers, not boxed	1½
“ “ “ “ boxed or crated	2
Clothing (not personal effects), in trunks	D1
“ “ “ “ boxed.....	1
Clover Seed.—See Seed.	
Cloves.—See Spices.	
Coal, Mineral, and Coke, N.O.S.	4...10
Coal Facings.....	4...7
†Coal Hods or Scuttles, O.R.	1
Coal Oil.—See Oils.	
Coal Saving Compounds.....	3...5
Coal Screens, Large	1
Cocoa, in boxes.....	2...4
“ Beans, in bags.....	2...4
“ essence or extract, in glass, boxed	1...5
“ essence or extract, in cans, boxed	3...5
* “ Butter, in sacks	1
* “ “ in boxes, kegs or bbls.....	2
Cocoanuts, in bags	1...4
“ in boxes, barrels or casks.....	2...4
“ (dissicated), in pails.....	1...4
“ “ in boxes or barrels.....	3...4
Cocoa Matting.—See Matting.	
*Cocoanutene.—Same as Lard.	
Coffee, roasted, ground or unground, in sacks, boxes, barrels, or tins, crated.....	3...5
† “ in tins, not crated or boxed, O.R.	1
“ green in sacks or barrels	4...5
“ Condensed, essence or extract, in glass, packed in boxes	1...5
“ Condensed, essence or extract, in cans, boxed.....	3...5
Coffee Mills.....	1
Coffins.—See Burial Cases.	
Coffin Trimmings, plated or cloth covered, boxed	1
“ Plates or white metal sheets (for coffin plates), boxed.....	1
Cogs, wooden, in boxes or barrels	3
Coke, Petroleum.—See Petroleum Coke	
*Collar Checks for Harness. Same as Woollen Goods.	
Cologne Water, in boxes, bbls. or casks.....	1
Coloring or Stain (Mortar)—See Mortar.	
Combs in cases.....	1
Compo Board.—Same as Wood Board. (See Paper.)	
Concentrated Lye.—See Lye.	
†Confectionery, in pails or cases, 25 lbs. each or over, O.R.	2...4
† “ in half bbls. or casks, O.R.	2...4
† “ N.O.S., O.R.	1...4

4...10

1

4...10

3...5

1½

ed 2

D1

1

4...10

4...7

1

3...5

1

2...4

2...4

1...5

3...5

1

2

1...4

2...4

1...4

3...4

3...5

1

4...5

1...5

3...5

1

1

1

1

3

1

1

1

2...4

2...4

1...4

C—Continued.

L.C.L. C.L.

Contractor's Plant, consisting of vehicles, derricks, tools and dredges.....	6
Coopers' Flags.....	1
Coops.—See Chicken Coops.	
Copperas.—Same as Blue Stone.	
Copperine.....	3...5
*Copper Ashes, in boxes or bbis.....	3...5
“ Stills and Worms.....	D1
“ Bottoms, Bolts, Nails, Sheets, Rods, and Ingots in packages.....	2...4
“ Vessels, very large. Taken by special contract only.	
“ Scrap and Pig.....	3...6
“ Ore (C.L.min. 30,000 lbs).....	4...10
“ Oxide.....	3
“ Singe Plates.....	2...4
“ Sulphate of.—Same as Blue Stone.	
“ Manufactured, not otherwise specified.	1
Copying Presses.....	1
Cordwood.—Taken by special contract only.	
*Cordage, Rope and Rigging, in coils or packages.....	3...5
“ Clothes Lines.....	3...5
“ Halters in bundles or boxes.....	2...4
“ Small Cord and Twine.....	2...4
“ Binding Cord for Harvesters, in bales or boxes.....	3...5
“ Lath Yarn.....	3...5
Corks and Corkwood.....	1...4
Cork Carpet.—Same as Oilcloth.	
Cork, ground, compressed in packages....	3...5
*Cornices, Metallic, including brackets, facings and fronts. O.R., not crated or boxed.....	4-1
Same, crated or boxed.....	3-1
Same, K.D. nested, crated or boxed.....	1
*Cornices, Metallic, all kinds, C.L. min. 12,000 lbs., O.R.....	3
*Cornice Ornaments (stamped metal); nested, crated or boxed....	1
*Cornices, wooden (C.L. minimum 20,000 lbs.)...	1...6
Cornice Poles, in bundles or cases.....	1...4
Corn.—See Grain.	
Corn Cakes, in cases.....	1
Corn Meal or Flour.—Same as Flour and Meal.	
Corn, Pop Corn.....	2
“ “ parched or popped.....	1
“ Sweet, dried.....	2
Corn Cobs, prepaid, C.L. 20,000 lbs.....	10
Corn Husks.—Same as Husks.	
Corn Poppers.—See Hardware.	
*Corset or Dress Stays; or Steels, in boxes.....	1
Corsets in cases.....	1
*Cottolene.—Same as Lard.	
*Cotton, not pressed in bags or sacks, O.R. of fire (C.L. minimum 20,000 lbs.).....	1...4
+ “ raw, pressed in bales, O.R. of fire.....	3...5
+ “ raw, in cans, crated or boxed.....	3...5
* “ raw, C.L. minimum 20,000 lbs.....	
Cotton, Domestic.—See Dry Goods.	

C—Continued. D

L.C.L. C.L.

Cotton Goods.—See Dry Goods.	
Cotton Seed Meal	4...8
+*Cotton Waste, in bags or sacks, not pressed, O.R. of fire(C.L. min. 20,000 lbs.)	1...5
+ “ “ in pressed bales O.R. of fire—lots under 10,000 lbs. in same car...	3
+* “ “ in pressed bales O.R. of fire—lots 10,000 lbs. and over in same car.	4
“ “ in pressed bales.....	5
Crackers, in boxes or bbls.....	2...4
Cracklings	4...7
Cranberries.—See Fruits.	
Crates, Empty, prepaid	D1
“ “ C.L. minimum 20,000 lbs.	10
*Creamers, set up (C.L. minimum 20,000 lbs.)....	D1...6
“ “ K.D. and boxed	1...6
Cricket Bats, Wickets, etc., in boxes.....	1
Crowbars.—See Hardware.	
†Crayons, in boxes or barrels, O.R.	1
*Cream Tartar	2...4
†Crockery and Stoneware, in boxes, barrels or casks, O.R.	2...5
+* “ “ in crates or hhds., O.R.	3...5
+* “ “ all kinds, min. C.L. 20,000 lbs.	
Cross Arms.—See Telegraph Supplies.	
+*Crokinole Boards, crated or boxed, O.R. (C.L. minimum 16,000 lbs.).....	1...4
Croquet Sets	1...4
†Crucibles, O. R., N. O. S.	1
Crucibles, in boxes or casks.....	3
Cultivator Teeth, in bundles	2...4
“ “ in boxes or casks.....	3...4
†Curling Stones, O.R.	1
Currants.—See Fruit.	
Curtain Fixtures, boxed or crated	1
“ “ Poles in bundles, wrapped.....	2...4
“ “ boxed or crated	3...4
* “ “ in the white, in bundles	3...5
“ “ Rollers and Slats, in bundles, wrapped, crated or boxed.....	3...4
Cushions, Carriage or Sleigh, boxed	D1
Cutch.....	3...5
Cutlery.—See Hardware.	
Cylinder casings, pressed steel	3...5

D

Dates.—See Fruits.	
Deck, Vault or Floor Lights.—See Glass.	
+Deer, in carcass, O.R.	D1
*Degras (Tanner's Oil), in wood	3...5
Dental Goods.....	1
†Demijohns, Empty, O.R.	D1...4
+ “ “ in casks or cases, O.R.	1...4
*Derricks, Small, in box cars	2...6
Desks.—See Furniture.	
Detonators.—Same as Gunpowder.	
Dextrine, in bags, boxes or casks.....	3...5

	Dirt Scrapers, hand.....	1
4....8	*Dog Biscuits or Cakes, in bags, boxes or bbls...	3....
ed, (s.) 1....5	Dowel Rods or Pins.....	3....
ots 3	*Dress Forms, or Dummies, wire or iron, S.U. 3-1	
ots 4	“ “ “ “ “ “ K. D.,	
ar. 4	flat or folded flat, crated or boxed.....	1
.....5	‡Dressed Hogs, O.R. of weather.....	3....5
.....4	Drugs and Medicines, not otherwise specified,	
.....7	in boxes, barrels or casks.....	1
	(For Patent Medicines see page 64.)	
D1	Drums, in cases.....	4-1
.....10	‡Dry Goods, as follows:—Any of the following	
D1....6	named articles, made wholly of cotton	
1....6	when specific name of articles and name of	
1	shipper are plainly marked on outside of	
1	packages and stated on shipping bill and	
2....4	receipt—(marking or describing packages	
or 2...5	as containing cotton piece goods will not	
R. 3...5	be sufficient)—viz., Domestic Cottons,	
.....	white or unbleached; Calicoes or Prints;	
.....	Canton or Cotton Flannels or Flannelettes,	
.....	plain or dyed; Canvas; Corset Jeans; Cot-	
1....4	tonades; Cotton Wrap; Cotton Yarn;	
1....4	Crash (Linen or Cotton); Domestic Checks,	
1	Stripes and Cheviots; Cotton Duck;	
3	Damasks; Denims; Drills; Domestic	
2....4	Ginghams; Glazed Cambrics; Osnaburgs;	
3....4	Sheetings (Bleached or brown); Silicias;	
1	Tickings; Window Hollands and Shade	
3	Cloth (plain, uncut and undecorated); in	
2....4	bales at O.R., or in boxes.....	2....4
3....4	All Dry Goods, except articles above named,	
1	will be classed as “Dry Goods not otherwise	
1	specified,” and the articles named will also	
2....4	be classed as “Dry Goods N.O.S.” unless the	
3....4	above conditions are complied with. Any	
3....5	package containing articles of more than	
3....4	one class will be charged the rate for the	
3....5	highest classed article contained therein.	
3....4	‡Dry Goods, in trunks, O.R.....	1½
D1 3....5	“ in bales, not otherwise specified,	
3....5	O. R. of chafing.....	1
	“ in boxes, not otherwise specified...	1
	“ Dress Lining (paper or wood fibre),	
	in bales or cases, O.R.....	2....4
	‡Dualin, NOT TAKEN.	
	Duck, in bales.....	2
	Dulse.....	2....4
	Dumb-Bells, in boxes.....	3
D1 3....5	Dye Stuff, not otherwise specified.....	1
1	“ in sticks or bundles.....	2....4
D1....4	“ in boxes, barrels or bags.....	3....5
1....4	‡Dye, liquid, in boxes. O.R.....	1....4
2....6	“ “ in bbls., O.R.....	2....4
	Dynamite, NOT TAKEN.	
	*Dynamo Bases (Iron) detached from the dynamo	
	—1,000 lbs. per piece, or over—whether	
3....5	shipped with the dynamos or not, O.R.....	3....5

D—Continued. E

L.C.L. C.L.

**Dynamos—1,000 lbs. per piece or over, O.R....	3....5
*Dynamos, boxed, O.R., N.O.S.	1....4

E

*Earth, Infusorial, in bags or barrels.....	3....5
“ Closets, loose.....	1½
“ “ racked or crated.....	1
†Earthenware, in boxes, barrels or casks, O.R..	2....5
** “ “ in crates, O.R.	3....5
“ “ in hhds, O.R.	3....5
“ “ Bottles, in nests, O.R.	3....5
* “ “ all kinds (except Drain or Sewer Pipe, or Loose), minimum C.L. 20,000 lbs.	6
+ “ “ Loose, O.R., released, taken in C.L. only ; loaded and unloaded by owners	4....10
+ “ “ Drain or Sewer Pipe, O.R., released	D1....5
††Eavetroughs, Metallic, in bundles, O.R.	2....5
** “ “ nested closely and wired in bundles, O.R.	2
+ “ “ nested, crated or boxed.	2
* “ “ all kinds, C.L. minimum 20,000 lbs.	5
“ “ Wooden	2....7
Edge Tools.—See Hardware.	
†Eggs, in baskets or pails, O.R.	D1
+ “ “ in boxes or barrels, O.R.	2....4
+ “ “ in patent carriers, O.R.	2....4
Egg Cases and Carriers.—See Boxes, empty.	
Egg Fillers, Paper.—See Paper.	
Egg Preservers (powder), in cases	1....4
Elbows, corrugated.—See Stove Pipe.	
†Electrical Insulating Conduits, tarred felt or paper, in bundles, crates or boxes, O.R.	1....3
“ “ Insulating Conduits, iron, cement lined	3....5
†Electric Light Appliances :—Arc Light Lamps and frames (without glass globes), in boxes or bbls., O.R. (C.L. minimum 16,000 lbs)..	1....3
†Electric Instruments and Fixtures, N.O.S., boxed, O.R.	1....3
* “ “ Generators.—Same as Dynamos.	
“ “ Light Bulbs.—See Glassware.	
“ “ “ Carbons, boxed	2....4
“ “ “ Globes—See Glassware.	
“ “ “ Hoods, iron, nested, in pkgs	2....4
+ “ “ Meters, boxed, O.R.	1....3
* “ “ Motors.—Same as Dynamos.	
“ “ Motor Trucks.—Same as Car Trucks.	
+ “ “ Storage Batteries, O.R.	1....3
* “ “ Transformers or Converters.—Same as Dynamos.	
* “ “ Street Mains and Couplings	3....5
†Electrotype Plates, boxed, O.R., released	1
†Elevator Buckets in bundles, O.R.	1....4
“ “ “ Tin or Iron, crated or boxed .	2....4

C.L. C.L.
3...5
1...4

3...5
1½
1
2...5
3...5
3...5
3...5

.....6
4...10
D1...5

2...5
2
.....5
2...7

D1
2...4
2...4

1...4

1...3

3...5

1...3

1...3

2...4

2...4

1...3

1...3

3...5

1

1...4

2...4

E—Continued. F

L.C.L. C.L.

‡Elevators, for buildings, K.D., crated or bxd, O.R. 2...6
*Embalming Fluid.—Same as Drugs and Medicines.

Emery, in bags or cases 2...4
“ in kegs or barrels 3...5
“ Wheels, boxed 2...4

Emigrants' Movables.—See Household Goods.
*Empties, returned (except crates and baskets) from original consignee to original shipper, and by the Road originally shipped, every package to be fully marked or addressed, any quantity prepaid 4

Empties not fully marked or addressed. NOT TAKEN.

NOTE.—If a C.L. of returned empties be shipped, a greater charge is not to be made than the C.L. classification and current rate applicable to the article or articles shipped.

Enamelled Ware, N.O.S., boxed or crated 2...5

Engines, Portable or Stationary.—See Machinery.

Engravings.—See Pictures.

Epsom or Glauber Salts.—See Salts.

Essences and Extracts, in packages, N.O.S. 1

‡Evaporators (fruit) and Fruit Dryers, iron, O.R. 1½...4

‡ Same K.D. flat, crated or boxed, O.R. 2...4

‡ Same, with feed steamers, O.R. 1...4

‡Evaporators (Sugar), iron, S.U., O.R. 1½...4

‡Evaporators (Sugar), iron, K.D., loose and detachable parts detached and crated or boxed, O.R. 1...4

‡Evaporator Tanks, galvanized iron or tin, O.R. 3-1...4

*Excelsior, in bales (C.L. minimum 20,000 lbs.)... 2...5

See Cir No 4

F

‡Fancy, , N.O.S., in trunks, O.R., released. D1

“ not otherwise specified, in cases.. 1

Fans, F Leaf, in cases 1½

*Faramel.—See Cattle Food.

Farina, not otherwise specified. Same as Cereals.

*Faucets, Wood or Metal, in barrels or boxes ... 2

Feathers, in boxes or sacks..... D1

“ pressed in bales 1½

Feather Beds, Pillows, Cushions, etc., in boxes or sacks..... D1

“ Beds, Pillows, Cushions, etc., pressed in bales..... 1½

“ Dusters, in boxes..... 1

“ Trimmings, in boxes D1

“ Quilts, in boxes..... D1

“ “ in pressed bales..... 1½

Feathers, Feather Beds, etc., all kinds, C.L. minimum 12,000 lbs 2

‡Feed Steamers and Evaporators, O.R D1

Feldspar..... 3...6

. F—Continued.

L.C.L. C.L.

Felt Clippings, in boxes, barrels or bags.....	3....5	
“ for underlying carpet	3....5	
“ for roofing	4....5	
“ boiler and pipe covering	2....4	
“ for Saddlery purposes	2....4	
“ Boots, Shoes or Socks.—Same as Boots and Shoes.		
Fence Posts and Rails. Taken by special contract only.		
Fenders and Fire Irons, in boxes.....	2	
Fertilizers, in bags or barrels.	4....10	
Fibre Chamois.—See Dry Goods.		
Figs.—See Fruit.		
*Figures, Wooden, display, set up.....	D1	
“ “ “ K.D. crated or boxed	1	
Files—See Hardware.		
†Filters, O.R.....	1	
*Fire Arms, in boxes	1	
†*Fire Crackers, securely boxed and marked to show contents, O.R.....	1	
†*Fireworks, N.O.S., securely boxed and marked to show contents, O.R.	D1	
†*Fire Engines, Hand-brake, minimum weight 4,000 lbs. each, O.R.	1....6	
† “ “ Steam, in box cars, actual weight, O.R.....	1....6	
†*Fire Extinguishers, Chemical, set up, O.R.....	D1	
† “ “ “ in boxes, O.R.	1	
† “ “ “ 2 wheel, min. wght. 2,000 lbs. each, O.R.	1....6	
† “ “ “ 4 wheel, min. wght. 6,000 lbs. each, O.R.	1....6	
†* “ “ Hand Grenades, boxed, O.R.	3....5	
Fire Kindlers, Composition	3....7	
“ “ Wood, boxed.....	3....7	
†Fish, Fresh or Frozen, in packages or fish safes on wheels, prepaid or guaranteed, O.R.	1	
† “ Fresh, in packages or frozen in bulk, prepaid or guaranteed, O.R.4	
†* “ in fish safes on wheels, prepaid or guaranteed, O.R. (C.L. minimum 20,000 lbs.)6	
Fish in bulk or in fish safes on wheels to be loaded and unloaded by owners.		
† “ Salted, Dried or Smoked, in hampers, O.R.	1....4	
† “ Salted, Dried or Smoked, in bundles, boxes or barrels, O.R.....	3....5	
“ Pickled, in pails, casks or barrels.....	4....5	
“ Canned.—See Canned Goods.		
†Fishing Nets, in bales, O.R. of chafing	1	
“ “ in boxes.....	1	
“ Rods, in bundles or cases.....	D1	
Flag Poles, in box cars	1	
†Flags or Banners, mounted or unmounted, in packages or bundles, O.R.....	1½	
Same, boxed.....	1	

C.L. C.L.

3...5
3...5
4...5
2...4
2...4

F—Continued.

L.C.L. C.L.

2
4...10

D1
1

1
1

1
D1

1...6

1...6

D1
1

1...6

1...6

3...5

3...7

3...7

1

....4

....6

1...4

3...5

4...5

1

1

1

1

1½

1

*Flax, in boxes, O.R.	2...5
** " in bales, O.R. (C.L. minimum 20,000 lbs.)	3...5
* " Straw, in bales (C.L. min. same as Hay)	3...7
" Seed.—See Seeds.	
" Seed Meal, in bags or barrels	4...8
" Waste (for Paper Stock).—Same as Cotton Waste.	
*Floats, Wood, for fishing nets, in bags or boxes.	3...5
*Flocks, in bags, sacks or crates (C.L. minimum 20,000 lbs.)	2...5
**Florida Water, in boxes, barrels or casks, O.R.	1
†Flour and Meal, in boxes and paper sacks, O.R.	
released	5...8
" " in bags or barrels, estimated weight 200 lbs. per bbl.	5...8
† " " mixed, in paper sacks, O.R.	
sifting, bags or bbls.8
Flour in sacks should be charged actual gross weight—the following are considered actual weights: half bbl. sacks 98 lbs., quarter bbl. sacks 49 lbs., eighth bbl. sacks 24½ lbs.	
Flour and Meal.—Minimum C.L. weight will be 30,000 lbs. per car, unless marked capacity of car be less, in which case the marked capacity, but not less than 24,000 lbs., will be the minimum.	
Flower Pots (prepaid).—Same as Earthenware.	
Flower Pot Stands, Wooden, S.U.	D1
" " " K. D. flat	1
*Fluid Beef.—Same as Beef Extract.	
Fluor Spar, in packages	3...6
Fluters.—See Hardware.	
*Flynette (Tanners' Oil), in wood	3...5
*Fly Paper, in bundles, crates or cases	1...4
Fly Traps, in boxes	D1
" nested and boxed	1
†Food, prepared for children and invalids, in glass, packed, O. R.	1
" prepared for children and invalids, in tin, packed	2
Foots, Molasses or Oil	3...5
†Forges, Portable, O.R.	2
*Forks.—See Hardware.	
*Fossil Meal.—Same as Earth (infusorial).	
Foundry Facings.—Same as Coal Facings.	
Foundry Flasks, wood or iron	3...5
Fountains and Fixtures, Soda, etc., Marble, boxed	1½
Fountains and Fixtures, Soda, etc., Wooden, boxed	1
*Fowls.—See Poultry.	
**Frames, Picture or Looking Glass, in bbls. O. R.	D1...3
** " Picture or Looking Glass, in crates, O. R.	1½...3
** " " " " in boxes, O. R.	1...3
Frames, Wooden, for pyrotechnic displays.	1...6
Same, empty, returned.—Same as Empties returned.	
Freezers, Ice Cream	1

FRUITS:—

Apple Cores or Parings, in boxes or barrels...	4....7
Apple or Fruit Butter or Sauce.—Same as Preserves.	
Apples, Evaporated or Dried, in bags.....	1....4
“ “ “ “ in boxes or bbls.	3....5
“ “ Green, only carried at owner's risk of freezing; must be prepaid and released between 1st November and 30th April, as follows:	
“ “ in bags or boxes	2....5
“ “ in bbls. to be taken at 165 lbs. per bbl.	3....5
“ “ in bulk8
*Cranberries, prepaid, O.R.....	2....4
*Grapes, in barrels, O.R.....	2....4
*Oranges and Lemons, in packages, O.R.....	1....3
Must be prepaid and released between the 1st of November and 30th April.	
+ Fruit, Fresh, in baskets, O.R. prepaid.....	1....3
“ “ “ in boxes or barrels, O.R. prepaid	1....3
“ “ “ not otherwise specified, prepaid, O.R., released.....	1....4
+ “ Mixed Cars Fresh Fruits, including Apples, O.R.3
“ Dried:—Dates, Figs, Raisins, Currants, Prunes, Berries, Apricots, Peaches, in mats, cases, boxes, kegs or bbls.....	2....4
“ in bags or mats not otherwise specified	1
“ Canned.—See Canned Goods.	
“ Preserved, not otherwise specified.....	1
“ Brined.—Same as Pickles.	
“ Cleaners and Improvers, set up.....	D1
“ “ “ K.D. flat.....	1
“ Driers—See Evaporators.	
*Fuller's Earth, in bags, boxes or bbls.	3....5
Furnaces and Furnace Castings.—See Stoves.	
+FURNITURE. In less than carloads, O.R., RELEASED, IN EACH CASE, as follows:	
Bamboo, set up.....	4-1
“ “ set up, boxed or crated	3-1
“ “ K.D. flat, boxed or crated	D1
Bamboo, Rattan, Reed, or Willow, not otherwise specified, set up.....	4-1
Same, boxed or crated.....	3-1
Same, K.D. flat, boxed or crated.....	D1
Bamboo Easels and Screen Frames—in bbls.	3-1
Bamboo—completely K.D. and shipped in bbls.	D1
Bed, Sofa, or Chair Springs, in bundles.....	D1
“ “ “ in boxes or bbls.	2
“ “ “ nested, in covered bbls.	2
Bedsteads, Wooden, common, set up.....	4-1
“ “ (common), finished, K.D.....	2
“ “ “ in white, K.D. and bundled	3
“ “ extra valuable, carved or elaborately finished, wrapped or crated.	D1
“ “ (brass), set up.....	3-1
* “ “ “ K.D., in bundles	1
* “ “ “ boxed.....	2

4....7

1....4

3....5

2....5

3....5

....8

2....4

2....4

1....3

1....3

1....3

1....4

....3

2....4

1

1

D1

1

3....5

4-1

3-1

D1

4-1

3-1

D1

3-1

D1

D1

2

2

1-1

2

3

D1

-1

1

2

F—Continued.

L.C.L. C.L.

FURNITURE—Continued:—

* Bedsteads (iron), K.D., boxed.....	3
* “ “ “ in bundles.....	2
* “ “ set up.....	D1
“ “ K.D.....	5
Bedslats in bdl.....	2
“ crated or boxed.....	3
Bookcases, set up.....	1½
“ K. D., flat.....	2
Brackets, Wood, boxed.....	1
“ or Stands for images, ornaments, etc..	D1
* Bureaus, Wardrobes, Washstands, Dressing	
Cases, Desks, Sideboards, wrapped, crated	
or boxed.....	1
Bureau Glass Frames, K D. in bundles.....	1
“ “ K.D. and closely boxed.....	2
Cabinets, Filing, crated or boxed.....	1½
“ Printers', crated or boxed.....	1½
“ Parlor, wrapped or crated.....	D1
“ Same, boxed.....	1½
“ Coffee, Cracker, Dental, Drug, Glove,	
Music, Phonograph, Typewriter, Cal-	
igraph, Thread or Spool, crtd. or bxd.	1½
Camping Tables and Ironing Stands (com-	
bined) K.D. and tied together.....	1
Centre Tables, K.D., legs off.....	1
Chairs, set up and closely boxed (N.O.S.).....	1
“ K.D. and closely boxed (N.O.S.).....	2
“ Dentists', Barbers' or Reclining, K.D.	
or folded, and boxed.....	1
* “ Dentists', Barbers' or Reclining (N.O.S.)..	D1
“ Reclining, folded flat, and crated.....	1
“ Common, seats nested, legs completely	
K.D. and bundled.....	2
“ Common, seats nested, legs nested...	
“ Arm or Rocker, arms on and legs off,	
K.D. and bundled.....	D1
“ Office, Revolving, tops detached from	
bases.....	1½
“ Office, Spring Rocking, with wooden	
bases, bases detached.....	1½
“ Common, wood seat, set up.....	D1
“ Common, wood seat rockers, set up....	D1
“ Common, wood seat, Rockers, without	
arms, seats nested, legs and rockers	
K.D. and bundled.....	1
“ Leather, perforated, or cane seat rock-	
ers, set up.....	3-1
* “ Woodframe, leather seated Arm or Rock-	
ing (rockers off), one chair reversed	
and resting on arms of chair beneath	D1
“ Bamboo, Rattan, Reed or Willow, set	
up, wrapped.....	3-1
“ Same, boxed or crated.....	D1
“ Same, with legs off, seats and backs	
nested together, wrapped or crtd..	D1
“ Bent Wood, completely K.D. in bundles,	
or crated.....	2

FURNITURE—Continued :—

Chairs, Carpet Rockers, set up.....	3-1
“ “ K.D. flat and bundled..	D1
* “ Wood Seat, Hall, wrapped or crated..	D1
“ Wood Seat, folded flat and bundled....	1
“ Common wood seat, completely K.D. and bundled	2
“ Wood or Cane Seat, in bundles of four or more—partly K D.....	D1
“ Cane, Splint, Slat and Perforated, Wood and Hair or Leather Seat, set up ..	3-1
* “ Same, crated or boxed.....	D1
* “ Same, K.D., in bundles or crated	1
* “ Same, Boxed	1
“ Camp, in bundles	1½
“ Folding.....	D1
“ and Step Ladders (combined), set up...	D1
“ and Step Ladders (combined), K.D., in bundles	1
“ Large Rocking, set up, rockers on or off.	3-1
“ Iron Opera (folding), crated or boxed..	2....4
“ Children's, set up	3-1
“ with Seats off, Frames and Legs on. Same as Chairs.	
* “ (not upholstered, wooden framed, with rattan insertion in the backs), set up, wrapped or crated.....	D1
* “ Cane seat, K.D., tops nested and wrap- ped in bdls., and bottomstied in bdls.	1
Chair or Lounge Frames, in white, not uphol- stered.....	1½
“ or Lounge Frames, in white, legs and backs off, K.D.....	1
* “ and Lounge Frames, finished but not upholstered, wrapped or crated ...	D1
Chair Seats, perforated, crated or boxed	1
Cheffoniers, Hat Racks, Hall Stands.—Same as Bureaus, etc.	
Church Furniture—Pew Ends, Pew Backs, Pew Seats, Chancel Rails, Altars, K.D., crated or boxed.....	2
Pulpits, set up, crated or boxed, in box cars	1
Pulpits, K.D., crated or boxed	2
Clothes Frames or Horses.....	1
“ “ K.D. and boxed....	2
“ Bars, K.D. or folded flat and tied in bdls.	2
Combined Table and Show Rack or Shelves (part iron), crated or boxed.....	1
Cradles, Children's, Wicker Work	3-1
“ “ (wooden), completely K.D.	
“ “ in bundles, crates or boxes	2
“ “ Iron	1½
“ “ Wood, set up.....	D1
Cupboards (Kitchen), set up	D1
“ tops off, doors detached	1
“ K.D., in bundles	2
Desks, Office, set up	1½
“ “ K.D., crated or boxed.....	1

FURNITURE—Continued :—

Easels (except Bamboo), wrapped or crated ..	D1
“ boxed	1
Folding Bedsteads—folded.—Same as Dressing Cases.	
Folding Beds, iron, folded and crated	1
Folding Bookcases, Screens, Tables, Clothes Racks, Wardrobes, Whatnots, Hat Racks and Ladders—when folded flat	1
Folding Cots or Cribs, folded	1
Hassocks and Footstools, crated or boxed	1
Hat Racks, revolving, set up	1½
“ boxed	1
“ K.D., crated or boxed	1
“ N.O.S.—Same as Bureaus.	
* Kindergarten Chairs.—Same as Chairs.	
Lounge or Sofa Frames, K.D., flat, backs, legs and head rests detached	1
Lounges, backs off, or without backs, wrapped crated or boxed	1½
Marble Slabs for Furniture, boxed or crated..	1
Mattresses, Wire, K.D., and securely boxed.	3....5
“ Wire, Hair, etc., set up	D1
“ Wire, rolled in bundles or bales ..	1
* “ Hair, in bales, canvassed	1½
“ Wire, wooden sides and ends	1½
“ Wire, iron sides and ends	1
“ Same, boxed	2
“ Wire, side pieces off, ends and wire rolled tightly and securely boxed ..	2
* “ or Spring Rails, completely K.D. and closely fastened in bundles.	2
* “ Common, other than hair or wire —rolled or baled	1
Night Commodes	D1
Rattan Furniture.—See Bamboo, etc.	
Rattan, in bundles	1
Rustic, set up	D1
School Furniture, N.O.S., K.D. and packed ..	2
“ “ set up	1
“ Desks, set up	1½
“ “ and Seats combined, set up and seats, folded	1
“ “ “ K.D., crated or boxed ..	2
Screens, ornamental, packed flat, boxed	D1
* Settees (Hall), wood seat, wrapped or crated ..	D1
Show Racks, extension.—Same as Hat Racks.	
* Show Tables or Shelves, folded flat, crtd. or bxd.	1
Sofas or Lounges, wrapped or crated	D1
Spring Beds, set up	D1
“ “ folded or rolled in bundles	1
Spring Bed Frames	D1
* Spring Bed Slats, in bundles	2
“ “ crated or boxed	3
Springs, Bed, Sofa or Chair, in boxes or bbls.	2
“ “ “ nested, in covered bbls.	2
Stools.—Same as Chairs.	

FURNITURE—Continued:—

Stuffed Parlor Furniture, Tete-a-tetes, and Sofa Lounges, set up	D1
Tables, N.O.S. (except Bamboo or Rattan), wrapped or crated	D1
" (Extension), common	1½
" Extension, K.D., legs off	1
" Centre or Extension, K.D., flat, crated, legs inside, leaves securely tied in bundles	2
" N. O. S., K. D., flat, or folded flat, including Tops, Leaves, Legs and Slides, securely wrapped or crated.	1
" Kitchen, legs off and packed inside..	1
" or Stands, brass, crated or boxed	D1
* Tete-a-Tetes.—Same as Sofas and Lounges.	
Wardrobes, K.D., flat	2
Furniture and Chair Stock, in white	3....6
Furniture, Common, in the white or in the rough, N.O.S., set up	D1
Same, closely boxed	2
* Furniture not otherwise specified, set up, wrapped or crated, or boxed	D1
++ " of all kinds, O.R., released, in car loads, except as otherwise specified above, common cars 35 feet long and under, min. 16,000 lbs.	4
+ " in furniture or hay cars or racked platform cars, minimum 20,000 lbs.	4
* Furs, Peltries or Skins, including Manufactured Furs for wearing apparel:— Coney, Badger, Bear, Beaver, Fisher, Fox, Kangaroo, Lynx, Marten, Mink, Muskrat, Nutria, Opossum, Otter, Rac- coon, Seal (Dry), Skunk, Wildcat, Wolf, etc., and imported Dog and Sheep Skins, pressed, in bales or boxes	1
Same—Dressed—in pressed bales or boxes, also made into wearing apparel, in boxes	1
++* Furs, Buffalo Robes, in bales, O.R.	1....3
* " Seal Skins, pickled, in bbls. or casks.	1½
* Fur Waste or Clippings, pressed in bales or boxes, prepaid	1
Fuse	1½
Fustic.—Same as Dye Woods.	

G

Galvanized Iron Oil Cans.—Same as Tin Oil Cans.	
Gambier	3....5
Gamboge, in cases	1
+ Game, in boxes or barrels, prepaid, O.R.	1
Game Traps.—See Traps.	
Garden Seats, Rustic.	1
" " Iron	2
+ Gas, Dental, in Cylinders, O.R. leakage	2

Gas Cylinders, Dental, empty.....	2
" " Iron or Steel, for passenger cars	2....4
*Gas, Oxygen.—See Oxygen Gas.	
‡Gas Machines or Generators, O.R.	D1....3
‡*Gas Machines (Acetylene), crated or boxed, O.R.....	1½....3
‡Gas Fixtures and Chandeliers, glass, in boxes, bbls. or casks, O.R.....	D1
‡*Gas Fixtures and Chandeliers, metal, in boxes, bbls. or casks, O.R.....	1
‡*Gas Logs, Terra Cotta, in boxes, bbls. or casks	1
‡Gas Meters, boxed or crated, O.R.....	1
Gas Retorts.—See Retorts.	
*Gas Water.—Same as Ammoniacal Liquor.	
Gasoline.—Same as Coal Oil. <i>See Cr No 4</i>	
Gelatine, in boxes	1
*Ginger, in cases, bags or bbls.....	2
Ginger Ale.—Same as Ale.	
Ginseng	1

GLASS, Plate, returned as misfit, or broken,
same rates and conditions as originally shipped.

* " Plate, broken, not to be taken as scrap glass.	
" " Plate, or Mirrors, boxed, loaded in box cars	4-1....1
‡ " Plate, for Mirrors, or Mirrors, in boxes not over five feet long or wide, at Owner's Risk, released on Special Plate Glass Release form.....	1....3
‡ " Plate, or Mirrors, package over 5 feet long or wide, in box cars, at Owner's Risk, shippers signing Special Plate Glass Release form.....	D1....3
" " Plate, or Mirrors, requiring the use of a Flat or Gondola Car for carriage— (Rule 3 and 6 not to apply.) One case minimum weight 12,000 lbs. D1 Two or more cases, min. wt 20,000 lbs. D1 Same—when shipped at Owner's Risk, shippers signing Special Plate Glass Release form— One case minimum weight 12,000 lbs. 3 Two or more cases, min. wt. 20,000 lbs. 3 Plate glass not in box cars to be loaded and unloaded by owners and at their expense.	
‡ " Signs, O.R., released.....	D1
‡ " Show Cards, boxed, O.R., released....	D1
‡* " ribbed, stained, ground, enamelled, leaded, colored or embossed, glass not over ¼ inch in thickness, boxed, O.R., released, boxes not over 5 feet long or wide.....	1....4
‡* Same, if over ¼ inch thick, or boxes over 5 feet long or wide.....	1½....4
‡* " Luxfer Prisms, in frame, O.R.....	1....4

G—Continued.

L.C.L. C.L.

GLASS—Continued:—

†	“	Common window, under 80 united inches, boxed, O.R. released.....	3....5
†	“	80 united inches or over, O.R. released	1....5
		United inches means the length and breadth of the package added together.	
††	“	Broken or scrap, in packages, prepaid	4....7
††	“	Lights—Deck, Vault or Floor (not in frame), boxed.....	3....5
	“	Insulators, in barrels or boxes.....	3....5
†	GLASSWARE, Bulbs, Electric Light, with or without platinum wire and brass collars, O.R. (min. C.L. 16,000 lbs.)	D1....3	
††	“	Bottles, Jars, etc., in boxes without covers, O.R.....	1....5
†	“	Bottles—Ale, Beer, Porter, Soda, Mineral Water, Brandy, Wine, Bitters, Prescription Vials, Fruit Jars, in bales, boxes or bbls., O. R.	3....5
††	“	Cut, in packages, O.R.....	D1
††	“	Globes, Electric Light, O.R. (minimum C.L. 16,000 lbs.).....	D1....3
†	“	Globes, Electric Arc Lamp, in boxes or barrels, O. R. (min. C. L. 16,000 lbs.)	1....3
††	“	Globes, Lantern, O.R.(C.L.min.20,000lbs)	2....5
††	“	Globes, Street Lamps, O. R. (minimum C.L. 16,000 lbs.).....	D1....3
†	“	Lamps, (coal oil, not cut glass), in boxes bbls. or crates, O. R.....	2....5
††	“	Lamp Chimneys, in packages O. R. (C.L. min. 16,000 lbs.).....	2....4
††	“	Lamp Shades, in boxes or barrels, O.R.	1....3
†	“	not otherwise specified, in crates, boxes, bbls. or casks, O.R.....	2....5
†	Globes, Geographical, packed in boxes, O.R....	1	
†	Gloves, Leather, Woollen or Cloth.....	1	
†	Glucose, in barrels.....	4....5	
†	Glue, dry, in bags or boxes.....	2....5	
†	“	“ in barrels or casks.....	3....5
†	“	liquid, in glass or tins, packed in boxes or barrels.....	2....5
†	“	“ in kegs, barrels or casks.....	3....5
†	“	Stock or Scrap, in sacks or barrels.....	3....5
†	“	“ in bulk.....7
†	Glycerine, Refined, in glass or tin.....	1	
†	“	Crude, in barrels or drums.....	2....4
†	“	Nitro.—NOT TAKEN.	
†	Gold and Silver Foil or Leaf.—NOT TAKEN.		
†	(Should be shipped by Express.)		
†	Government Supplies. Taken by special contract only.		

GRAIN.—(Same rule as to minimum C.L. weight as for Flour and Meal).

	Barley, Pearl and Pot, in boxes.....	3....5
	“	“ in bags or barrels... 4....8
	“	Common..... 4....8

GRAIN—Continued :—

Beans, in boxes.....	3...5
“ in bags or barrels	4...8
Buckwheat	4...8
Corn, Sweet, Pop, etc.—See Corn.	
“ Common	4...8
Malt	4...8
Oats	4...8
Peas, Dried or Split in boxes	3...5
“ Dried or Split in bags or barrels.....	4...8
“ Dried, Common	4...8
Rye.....	4...8
Wheat.....	4...8
The general term “Grain” will not apply on Pot and Pearl Barley, Beans, Buck- wheat or Split Peas on special “Grain” Tariffs, unless these articles are enu- merated thereon as included in the Special Grain Rates.	
Granite Ware.—Same as Agate Ware.	
Granite.—See Marble.	
Granolithic material and tools, N. O. S.—Same as Roofing material and tools.	
*Grass Fibre, for upholstering.—Same as Hay.	
‡Grates and Grate Castings, O.R.—See Iron.	
Gravel	4...10
* “ Silica Grit, for poultry, in bags or bbls..	4...10
“ Bird, in packages, boxed.....	3
Gravestones.—See Marble.	
Grease, in cans or buckets.....	3...5
“ in boxes	4...5
“ in barrels, with or without heads.....	4...5
‡Grindstones, O.R.	4...7
“ hand, set up	1...4
“ “ boxed or crated.....	2...4
Groceries, not otherwise specified.....	1
Guano.—Same as Fertilizers.	
Gum, Copal, Demar, Kowrie, Sandarac, Shellac, Chicle, Dextrine, in packages	2...4
“ not otherwise specified, in packages	1
Gunny	3...5
Gun Stocks and barrels, in boxes	1
“ “ in the rough, in boxes or bundles...	2
Guns.—See Fire Arms.	
‡Gunpowder, common black, O.R., in fireproof iron magazines, wooden or metallic kegs, (when authorized to be so carried by the Railways concerned), or in cans or cannis- ters packed in cases. To be marked GUN- POWDER, at Company's convenience....D1	
‡Gunpowder, common black, O.R. packed as above, in lots of 10,000 lbs. or over.....	1
Gutta Percha and Gutta Percha Goods.....	1
Gypsum	4...10

H

	L.C.L.	C.L.
Hair, in sacks, N.O.S.	1	4
" " Curled or Rope, pressed in bales.	2	4
* " Plasterers', in sacks	1	5
* " " in barrels.	2	5
" " pressed in bales	3	5
* Hammocks, in bundles or bales.	1	
Hams.—See Meats.		
* Handles, Wood, in white (min. C.L. 30,000 lbs.).	4	7
Hardware, in trunks	1	

HARDWARE :—

* Bells, O.R., N.O.S.	1	
Cant-dogs, Clawbars, Crowbars.	3	5
Clamps, for fencing, in boxes or bars.	3	5
Clippers or Shears, hair, horse and sheep, boxed.	1	
Corn Poppers.	1	
Counter Paper Cutters.	2	
Cutlery, in boxes	1	
Cutter Bars.	3	5
Drag Teeth, in packages.	3	5
Door Knobs.	2	5
Door Locks.	2	5
Files, in packages.	2	5
Fluters.	1	
Forks, Hand, in bundles.	2	5
Grain Cradles.—See Agricultural Imple- ments.		
Hay Knives, in bundles.	1	5
" " in boxes.	2	5
Hammers, Sledge.	3	5
Harrow Teeth, in packages.	3	5
Hinges, heavy, for Gates, Barn Doors, etc..	4	5
Hoes, in bundles.	2	5
Jacks, Hand, loose.	2	5
" " boxed or crated.	3	5
Pick Axes, loose or in bundles.	2	5
" " in boxes or casks.	3	5
Plow Beams, Iron.	3	5
Plow Castings, Plow Points, Mouldboards, Shares and Wings, in bundles.	2	5
" " same in boxes or barrels.	3	5
Post Augers.	2	
Punches, Iron (Power).	3	5
Rake Heads, Iron, in boxes.	3	5
Rake Teeth, in packages.	3	5
Rakes, hand, iron or steel heads, in bundles	2	5
Reaper and Mower Knives.	3	5
Rings (Bull or Hog), in boxes.	3	5
Sad Irons, in boxes or barrels.	3	5
Scoops, in bundles.	2	5
Screws, Bench, Iron, in boxes.	3	5
" " Iron or Steel, in boxes.	3	5
Screw and Strap Hinges.	3	5
* Scythes, Sickles or Reaping Hooks, in bdl. " " in boxes.	1	5
Scythe Snaths, in bundles.	2	5
	1	5

...	1...	4
...	2...	4
...	1...	5
...	2...	5
...	3...	5
...	1	

s.).	4...	7
...	1	

...	1	
...	3...	5
...	3...	5

p,	1	
...	1	
...	2	
...	1	
...	3...	5
...	3...	5
...	2...	5
...	2...	5
...	2...	5
...	1	
...	2...	5

...	1...	5
...	2...	5
...	3...	5
...	3...	5
...	4...	5
...	2...	5
...	2...	5
...	3...	5
...	2...	5
...	3...	5
...	3...	5

...	2...	5
...	3...	5
...	2	
...	3...	5
...	3...	5
...	3...	5
...	2...	5
...	3...	5
...	3...	5
...	2...	5
...	3...	5

...	3...	5
...	3...	5
...	3...	5
...	2...	5
...	3...	5
...	3...	5
...	1...	5
...	2...	5
...	1...	5

H—Continued.

L.C.L. C.L.

HARDWARE—Continued:—

Shot, in bags.....	1...	5
“ in boxes or kegs.....	3...	5
+ “ in small bags or packets, enclosed in gunnies, O.R.....	3...	5
Shovels and Spades, in bundles.....	2...	5
Skates, Ice or Roller, boxed.....	1	
Staples, in boxes or kegs.....	3...	5
* Tacks, Iron or Steel (in bulk), in boxes, kegs or bbls.....	4...	5
* “ in paper or wood fibre pkgs., boxed..	2...	5
“ not otherwise specified.....	2	
T and Band Hinges, in bundles.....	3...	5
“ “ in boxes or barrels.....	3...	5
* Thresher Teeth.....	3...	5
Wrenches, in packages.....	3...	5
General Hardware, not otherwise specified.	2	
Mixed cars of Forks, Hoes, Rakes, Scythes, Scythe-Snaths, Shovels, Spades, Grain Cradles and Hand Farm Implements....	5

Harness.—See Saddlery.

Hats and Caps, in trunks.....	D1	
“ “ other than straw goods, in boxes	1	
* “ “ Straw Hats, Caps and Bonnets (not trimmed), in boxes.....	1	
“ Straw in boxes, bales or crates.....	1	

Hay, hand pressed.....	1½..	10
“ Compressed in bales.....	3..	10
* Cars under 30 feet., min. 18,000 lbs.; 30 feet and up to 35 feet 20,000 lbs.; over 35 feet 24,000 lbs. (inside measurement to govern). See Car No 4		

Hay, Marsh.—Same rates and conditions as hay.

* Hay Rope, twisted and pressed in bbls. or bales.	1...10	
Hay or Grass Caps.—Strawboard or Wood Pulp	2...	5

Heading.—See Lumber.

* Heddles for Looms, boxed.....	3...	5
† Hemp, in boxes O.R. of fire and water.....	2...	5
“ “ in bales “ “.....	3...	5
* “ C.L. minimum 20,000 lbs. Seed.—See Seed.		
“ Machines.—See Machinery.		

Hercules Powder.—NOT TAKEN.

Herrings.—See Fish.

Hessians, in bales or rolls.....	3...	5
----------------------------------	------	---

Hides and Skins:—

Hides, Dry, loose.....	1...	3
“ “ pressed in bales.....	3...	5
“ Green, loose.....	1...	3
“ Green, booked or bundled.....	3...	5
“ Salted or Pickled, in barrels.....	3...	5
Hide Cuttings.....	3...	5

H—Continued.

L.C.L. C.L.

Hides and Skins—Continued:—

Skins, Dry—Calf and Sheep, loose.....	1....3
“ “ “ “ in bales.....	2....4
“ “ Deer and Goat, loose.....	D1
“ “ “ “ in bales.....	2....4
“ Green, Calf and Sheep, and Sheep Pelts, loose	1
“ “ Calf and Sheep, and Sheep Pelts, salted or pickled, in bales or bbls. .	3....5
“ “ Salted or pickled, in bbls.....	3....5
“ “ Deer and Goat, loose.....	1
“ “ “ “ in bales.....	2....3

Peltries.—See Furs.

Musk Ox Robes.—See Furs.

High Wines.—See Liquors.

Hinges.—See Hardware.

*Hobby Horses, set up	3-1....4
“ “ “ boxed.....	D1
“ “ K.D. and boxed or crated.....	1
+ “ “ Shoo Fly Rockers, loose, O.R....	D1
+ “ “ “ Crated or boxed, O.R. .	1
* “ “ all kinds, (C.L. Minimum 16,000 lbs.)4

Hockey Sticks, in bundles..... 1 |

Hogs, Dressed.—See Dressed Hogs.

**Holly, Mistletoe and Laurel Branches, or Ever- green Decorations, in bbls. or bales, O.R., p'pd	1½
** Same, in boxes, O.R., prepaid.....	1

*Hominy, not otherwise specified, rolled, pressed, cracked, dried or dessicated, in boxes	3....5
“ same in bags or barrels.....	4....5
* Honey, in glass, packed in cases	1....4
* “ in cans, not boxed	1....4
* “ in cans, boxed or crated	2....4
+ “ in kegs or barrels	2....4
+ “ in comb, boxed, O.R.....	1....4

Honey and Wax Extractors, tin, crated or boxed

Honeycomb Frames, wooden, K.D., flat, or folded flat, in bundles, crates or boxes....	3....5
--	--------

Hoofs and Horns, in crates or bags, less than 10,000 lbs.....	3
“ “ “ 10,000 lbs. and over	4....10

Hoof Dressing, in glass, packed in cases	1
“ “ “ in tin bxs. or cans, pkd. in cases.	2

Horn Tips or Ends, in packages.....	4....5
-------------------------------------	--------

Hoops, Hop Poles, etc.—See Lumber.

*Hops, in bags or boxes (C.L. min. 14,000 lbs.) ...	1....
“ pressed, in bales (C.L. min. 14,000 lbs.)...	2....3

Horse Covers—Waterproof, green or wet—not
taken.

Horse Nails.—See Nails.

Horse Powers.—See Machinery.

Horse Shoes.—See Iron.

Hose—Leather, Rubber, or other	2....
--------------------------------------	-------

Hose Reels—Lawn, set up	D1
-------------------------------	----

“ “ “ K.D.

*Hot Air Drums.—Same as Stovepipe.

Hot Water Heaters.—See Stoves.

“ “ Reservoirs	2....5
----------------------	--------

—42—

1....3	++Household Goods and Second-hand Furniture,	
2....4	O.R., released, prepaid (C.L.	
D1	min. 20,000 lbs.)	1....6
2....4	+ “ “ including Live Stock (not	
s, 1	over 10 head per car) to be	
s, 3....5	charged C.L. (min. 20,000 lbs.)	6
3....5	+ Live Poultry, in coops or crates, forming	
1	part of and accompanying shipments of	
2....3	Household Goods, will be charged for at	
	classified rating of Household Goods.	
	No freight will be forwarded as a “lot,”	
	but in all cases every article must be	
	specified, except when a car is chartered,	
	in which case it must be distinctly under-	
	stood between the Agent and the Ship-	
	per, and so stated on shipping note and	
	receipt, that the Company assumes no	
	responsibility as to contents or condition	
	of contents of car, and that the carload	
	rate will be charged.	
3-1....4	When a car contains Horses, Mules or	
D1	Cattle, one man in charge will be carried	
1	free (on same conditions as for Live	
D1	Stock), but no free return pass will be	
1	given. With other animals or poultry,	
....4	man in charge to pay fare.	
1	House Movers' Material, consisting of Capstans,	
	Chains, Jackscrews, Pulleys, Ropes,	
	Heavy Timbers, Wooden Rollers, etc.	
	(all second-hand)	6
3....5	Houses, Portable	7
4....5	Hubs.—See Carriage Goods.	
1....4	Husks and Hulls, in bags, prepaid	1...10
2....4	“ “ “ in boxes, bbls. or bales, prepaid	2...10
2....4	“ “ “ (C.L. min. 20,000 lbs. per car.)	
1....4		
1		
3....5	Ice, L.C.L. in tin boxes or safes, or C.L. in bulk,	
3	O.R., prepaid	3...10
4...10	*Ice Boats, K.D. in bundles	2...5
1	Ice Cream Freezers	1
2	++Images and Figures (not statuary), Clay, Earth-	
4....5	enware, Plaster of Paris, Terra Cotta or	
	Wood, well packed in bxs., bbls. or casks, O.R.	1½...3
1....	Incubators, boxed or crated	1...3
2...3	Indigo, in cases	1
	Indurated Fibre.—Same as Woodenware.	
	*Ink, in glass, earthenware or tin, in cases, or	
	bbls., O.R.	2...4
	* “ (in bulk) in kegs, barrels or casks	3...5
	Insect Powder, or Destroyer, N.O.S.	1
	Insect Destroyer, liquid	1
	Insulators.—See Telegraph Supplies.	
2....	IRON:—	
D1	Anchors, Anvils, and Heavy Forgings	3...5
	* Angles	3...5
	* Awning Frames, in bundles	1...5
2....5	* “ “ crated or boxed	2...5

IRON—Continued :—

	Axles, Carriage or Waggon	3....5	
	Axles, for Children's Carriages or Express Waggon—in bdl. or pkgs.....	3....5	
	Bar, Band, Boiler	4....5	
*	Barrels, not less than 70 lbs. each	1....5	
*	Barn Door Hangers	3....5	
*	“ “ Hanger Tracks.....	3....5	
*	“ “ Stay Rollers	3....5	
*	“ “ Rails	3....5	
*	Beams, Columns, Girders.....	3....6	
	Billets and Blooms	4....5	
	(NOTE.—To take above rating Billets or Blooms should have combined measurement of the width of the four sides of each of not less than 14 inches. Billets may be of not less sizes than above provided they are square—not round, flat or oval—the weight of each being not less than 150 lbs.)		
	Bolts, Nuts, Rivets, Washers	3....5	
*	Bolts, Bridge or Barge, 12 inches long or over	4....5	
*	Buoys, including Bell Buoys	2....5	
	Bedsteads.—See Furniture.		
	Bolsters	3....5	++
*	Bridge Material	3....6	
	Buckets, nested	3....5	++
	Buggy Seats, set up	2....4	++
	“ “ nested	3....4	
+	Castings—light, loose, in bundles, under 100 lbs. per bundle, O.R.	1....5	++
+	“ “ “ 100 lbs. per bundle, or over, O.R.	2....5	
++	“ “ “ in boxes or casks, O.R.	3....5	*
++	“ dressed and finished, O.R.	1....4	
	“ Malleable, in the rough, in boxes or casks	3....5	+
+	“ heavy, 100 lbs. per piece or over, O.R.	3....5	
	Heavy Castings, over 2,000 lbs. per piece, to be loaded and unloaded by owners.		*
*	Chain, other than cable, loose	2....4	
*	“ “ “ in boxes or bbls.	3....5	*
*	“ cable— $\frac{1}{2}$ inch and over	3....4	
	Chairs	2....5	
	Closet Cisterns	2	
*	Clutch Nails, in boxes or barrels	3....5	
	Conduit Pipe, cement lined	4....7	
	Corrugated Sheet	3....5	*
	Doors	3....5	
*	Door and Window Sills	3....5	
	Drums, empty	1....5	
*	Elevator Enclosures, iron and wire work combined, crated or boxed	1....5	++
	Fence Stays or Guards	3....5	
*	“ Posts	3....5	++
	Fencing, Railing	2....5	++
	Filings	4....10	++
	Fire Alarm Boxes	1....3	++

IRON—Continued :—

3....5		Fire Escapes, in bundles, crates, or boxes, loaded in box cars	3....5
3....5		Fire Escapes, with or without water pipe, —in sections, in bundles, boxes or crates (in box cars).....	3....5
4....5		Fire Plugs and Water Gates	3....5
1....5	*	Fly or Balance Wheels.—Same as Castings.	
3....5		Forgings, heavy, in the rough.....	4....5
3....5		Fountains, K.D.....	1....4
3....5		Grates and Fronts, unfinished, in bundles, under 100 lbs. per bundle	1....5
3....6		“ “ “ 100 lbs. per bundle or over	2....5
4....5	+	“ “ “ finished, O.R.	1....4
		“ “ “ K.D. and boxed	2....4
	*	Gratings and Doors for sidewalks	3....5
		Hoops	3....5
		Horse Shoes	4....5
		Horse Shoes and Nails, in boxes or kegs, in mixed cars.....5
3....5		Horse Weights, loose	1
4....5		“ “ boxed.....	3
2....5		Hydrants	3....5
3....5	++	Lath, in bundles, O.R.....	4....5
3....6		“ in crates or boxes	4....5
3....5	+	Liquor in wood, O.R.....	3....5
2....4	+	Mantels and Fronts, set up, O.R.....	1....4
3....4		“ “ K.D. and boxed.....	2....4
	*	Mast Arms and Hangers, for electric poles.	3....5
1....5	++	Monuments (or other Metallic Monuments for Cemeteries, etc.), crated or bxd, O.R.	2....5
2....5		Metallic Ceiling or Sheeting, plain or stamped	4....5
3....5	*	“ “ corrugated, including mouldings, nested crated or boxed	3....5
1....4		“ Shingles, in packages	4....7
3....5	+	“ Statuary and Ornamental Figures, crated or boxed, O.R.....	2....5
3....5		Nails and spikes, in bags	2....5
	*	“ “ in kegs and boxes	4....5
2....4		Nitrate of, in drums or casks	4....5
3....5	*	Pail Hooks, in boxes or barrels	3....5
3....4		Pig and Speigle	4....10
2....5		Pipe (Hot Air, Steam or Water-Coil).—Same as Radiators.	
2		Pipe, Wrought Iron, all sizes	4....5
3....5		“ Cast Iron, under 5 inches diameter...	4....5
4....7	*	“ “ 5 inches diameter or over (inside measurement).....	4....7
3....5		“ Fittings, N.O.S., in bxs., kegs or bbls.	3....5
3....5		“ “ or Connections (iron), such as joints elbows and Ys	4....5
1....5	++	“ Galvanized Iron, Tin or Zinc Conductor Pipes in bundles, O.R.	D1....5
3....5	++	“ Same, crated or boxed	1....5
3....5	++	“ Galvanized Iron, Tin or Zinc Pipes, over 10 inches diam., in bundles, O.R.	3-1....5
2....5	++	“ Same, crated or boxed.....	D1....5
4....10			
1....3			

IRON—Continued :—

++	Pipe, Sheet Iron (not stove pipe), straight seam, under 12 ins. diam., in bdl's, O.R.	1½...5
*	“ Same, crated or boxed	1...5
++	“ Same, over 12 ins. diam., in bdl's, O.R.	1...5
++	“ Same, crated or boxed	1½...5
*	Poles, for electric rys., including iron centre poles and brackets or cross arms for same	3...5
	Post Office or Letter boxes	1...3
*	Postal Bag Racks or Holders, S.U.	1...5
*	“ “ “ “ K.D. in bundles	3...5
+	Pots, Pans and Stove Furniture, O.R.	2...4
+	“ (Slag) with or without wheels	3...5
	Pulleys	2
	Pumps, hand	2...4
	“ steam	3...5
	Pyrites. Same as Iron Ore.	
	Range Boiler Stands , set up or K.D.	3...5
*	Retorts	3...5
	Rings, or 5th Wheels, Carriage or Waggon, in bundles	1...5
	“ “ Carriage or Waggon , in packages	2...5
+	Rolls, loose, finished, O.R.	1...5
++	“ crated, O.R.	3...5
+	“ in the rough.—Same as Castings.	
+	“ boxed, or wrapped in canvas, O.R. ..	3...5
+	Roofing, N.O.S.	3...5
+	Russia (Sheet) O.R.	1...4
+	Safes, 10,000 lbs. each or over, O.R.	2...4
+	“ under 10,000 lbs. each, O.R.	3...4
	Safes of 1,000 lbs. each, or over, to be loaded and unloaded by owners.	
	Sash—Shutters	2...5
	“ Weights, in bdl's., boxes or bbl's.	4...5
	Scrap, (L.C.L. lots in pkgs. or tied in bdl's.).	4...10
	“ old wheels, old rails, etc.	4...10
*	Shafting—wheels and pulleys attached.	1...5
*	“ without Wheels, Pulleys or other fixtures attached	3...5
*	“ Hangers and Couplings	3...5
*	“ Shipped with machinery, of which it forms a part, mixed C.L. Same as the Machinery.	
*	Sheet (Common)	4...5
	“ Corrugated	3...5
	“ Galvanized	3...5
*	“ Tinned or Japanned, crated or boxed	3...5
	Ship Knees	3...5
	Shoes and Dies (cast iron or steel) for Stamp Mills.	3...5
	Same, when shipped with Machinery, of which they form a part, same rating as the Machinery.	
	Shovel Blanks (without handles)	3...5
	Signs, boxed	3...5
	Sinks	2...4
	Sleigh and Cutter Gear, K.D., in bundles ..	1...5

IRON—

* Sh

* S

* S

* S

* S

* S

* S

* S

* S

* S

* S

* S

* S

* S

* S

* S

* S

* S

* S

* S

* S

* S

* S

* S

* S

* S

* S

* S

* S

* S

* S

* S

* S

* S

* S

* S

* S

* S

* S

* S

* S

* S

* S

* S

* S

* S

* S

* S

* S

* S

* S

* S

* S

* S

* S

* S

* S

* S

* S

* S

* S

* S

* S

IRON—Continued :—

*	Smoke Stacks, not over 12 inches diameter..	D1
*	“ “ N.O.S.....	3-1
	“ “ K.D. in sheets, flat or round, nested, bd. with wire or crtd.	3....5
	Spring Clips, Carriage or Waggon, in pkgs.	3....5
	Stable Fittings. Feed Boxes, Hay Racks, Stall Posts, etc.....	2....5
*	Stair Work, Balusters, Hand Rails, Posts, Risers, Stringers, Treads, in box cars..	3....5
+	Statuary and Ornamental Figures, O.R.....	1....4
+	Stills and Worms.....	D1
*	Stools and Stool Pedestals	2....5
*	Strapping, for boxes, etc., in bxs. or bbls...	3....5
	Stretchers, for wire fencing, in boxes or kegs	3....5
	Tanks or Cisterns.....	D1....5
	Toe Calks, in boxes.....	3....5
*	Truck Wheels	3....5
*	Tubs (Laundry).....	2....5
*	“ “ nested crated or boxed	3....5
	Tyres, other than R.R. Supplies	3....5
	Tyre Upsetters.....	3....5
	Valves.....	3....5
	Vault and Prison Work	3....5
	Vases.....	1....4
	Ventilators, Caps or Cowls, gal. or sheet iron.	D1....4
	“ Window (not Wire Screens), boxed	1....4
	Vises.....	3....5
	Waggon Boxes, or Thimble Skeins, loose ..	2....5
	“ “ “ in bundles	3....5
	Water Wheels.....	2....5
*	Wheels, gear, for Electric Motors.—Same as Castings.	
	Yellow or Muntz Metal for sheeting ships..	3....5
	Isinglass, in cases	1
	Ivory, in packages.....	1
	Ivory Nuts, or Blocks, in packages	3....4
	Ivory Black.—Same as Ochre.	

Japan ware Same as J Varnish See Cr 110 of

	Jacks, Hand, loose.....	2
	“ “ boxed or crated.....	3
	Japanware.—Same as Tinware.	
	Japanese Goods.—Same as Fancy Goods.	
	Japonica.....	3....5
	Jellies.—See Preserves.	
	Jewellers' Scrap or Sweepings. Not taken, should be shipped by express.	

JOINERS' WORK :

	Blinds, Inside—Door and Window.....	1
+	“ Outside, with Slats, racked, O.R....	2
+	Blind or Shutter Slats, in bdls., crts. or bxs.	3
+	Balusters and Turned Work, O.R.....	2
	Counters, if in box cars, O.R.....	1
+	Door Frames, O.R.....	1
+	Doors, loose, O. R.....	3
+	“ racked or crated, O. R.....	3
+	“ Glazed with common glass, well crated or boxed, O. R.....	1

JOINERS' WORK—Continued :—		
++	Mantels, O.R.	1
++	Mouldings, in white, in bundles, O.R.	2
	“ in boxes or crates.	2
++	Panelled Work, O.R.	2
	Partitions, rolling or folding, crated.	2
	Same, boxed.	3
++	Planed and Moulded Boards, O.R.	3
	Planed and Moulded Boards for wainscot- ing, etc., painted or stained on one side, in bundles or crates.	3
++ *	Revolving Doors, insheaves, K. D. crtd. or bxd	2
+++	Scroll Work, O.R.	1
+++	Shelving, Baseboards, etc., O. R.	3
++	Sashes, Glazed, with common glass, well crated or boxed, O.R.	1
++	“ Unglazed, O. R.	1
++	“ K. D. in bundles.	2
++ *	Sashes and Doors, glazed and leaded, stained or colored glass (not plate glass), crated, O.R.	D1
++	Same, closely boxed, O.R.	1
++	Shutters, close, O. R.	2
++	Window and Door Screen Frames, with or without wire cloth, O.R.	1
++ *	Same, without wire cloth, K. D., crtd. or bxd.	3
	Mixed cars Joiners' Work as above, also in- cluding Desks, Show or Display Cases, Cabinets, Roller or Stationary Book or Fancy Goods Cases or Stands, Counter or Shelf Fittings, Trimmings or Cor- nices, O.R.—Same as Furniture.	
++	Joiners' Work, not otherwise specified, O.R.	1
	“ “ all kinds in box cars (C. L. minimum 20,000 lbs.)	6
	Junk (old rope and cordage)	3. 5
	Jute Butts and Lashes.	3. 5
	“ Horse Blankets or Covers.	2. 0

K

Kaoline, in packages.....	3....5
Kalsomine.....	4....7
Knees, Ship.—See Lumber.	
“ “ Iron.—See Iron.	
Knitting Machines, Hand, in boxes.....	1½
“ “ Power.—See Machinery.	

L

Lacrosses, in bundles.....	D1	
“ in boxes.....	1	
Ladders.....	D1	1...6
“ Sectional, Telescoped.....	2	...6
“ Step.....	1	...6
* “ C. L. minimum 20,000 lbs.		
Lamp Black.....	1	
+Lamps (Stereoptical) and Fixtures, O.R., boxed.	D1	
+Lamps and Lanterns, N.O.S., well packed, O.R. (See Glassware)	1	...4
*Lamp Burners, brass, in cases.....	1	...4

	C.L.	C.L.
Lard.	3.	5
Lasts, wooden, tied in bundles or in sacks	1.	5
“ “ in boxes	2.	5
“ iron in bundles	2.	5
“ “ in boxes.	3.	5
Last Blocks.	10	
Laths—See Lumber.		
Lawn Tennis Sets, in boxes.	1	
Lead, White or Red, in tins, loose.	2.	4
“ “ “ packed in wood.	3.	5
“ “ “ in kegs, casks, drums or irons	3.	5
“ Bar, Pig, Sheet and Pipe	3.	5
“ Pipe—Telegraph or Telephone, on Reels.	3.	5
“ Sheet, or Foil, for Tea, in boxes	2.	4
“ Foil, in boxes.	2.	4
“ Scrap.	4.	7
“ Ashes or Dross.	4.	7
Leather, loose (C. L. minimum 20,000 lbs.)	1.	4
“ in bundles, rolls, boxes or bbls. (C. L. minimum 20,000 lbs.)	3.	5
“ Board (C. L. minimum 20,000 lbs.)	3.	5
“ Colored or stained, in boxes	3.	5
“ Patent, in boxes	1	
“ Patent, in rolls or bales.	1	
“ Scraps (C. L. min. 20,000 lbs.)	3.	5
“ Belting, O. R.	2.	4
“ Soles, Heels and Welting, in bags, boxes or bbls. (C. L. min. 20,000 lbs.)	2.	4
“ Stain.—Same as Blacking, Curriers'.		
“ Straps, with buckles or other fastenings, in boxes or bbls.	1	
“ Goods, N. O. S., in cases or bbls.	1	
Leatheroid, in crates or boxes.	2	
Lemons.—See Fruit.		
Lemon Syrup, in glass, packed in wood	1	
“ “ in wood.	2	
Letter File Clips, board, with fixtures, cirt'd. or bxd.	1	
“ Same, without fixtures, flat, crated or boxed	2	
Licorice—Stick, Root or Mass.	1	
“ Mass or Paste, in boxes	2	
“ Powdered, in barrels.	3	
Life Preservers, Cork.	1.	4
Lightning Rods, in bundles	1	
“ “ in boxes.	3.	4
Lime, Common.	4.	10
Lime Fruit Juice.—Same as Liquors, Native.		
Linseed.—See Seed.		
Linseed Meal.—See Flaxseed Meal.		
Liquors, in demijohns or baskets, O. R., released D1		
Foreign Wines, Spirits and Cordials, in glass, tins or jugs, securely packed in boxes or barrels, O. R., released.	1.	3
“ Wines, Spirits, and Cordials, in wood, O. R. of breakage, leakage or freezing.	2.	4
“ Wines, Spirits and Cordials, O. R. of breakage, leakage or freezing, mixed carloads, in cases and wood.		3

Liquors—Continued:—

‡	Native Wines, Spirits and Cordials, in glass, tins or jugs, securely packed in boxes or bbls, O.R., released.....	1....4
‡	“ Wines, etc., in stoneware jugs, covered with wickerwork and capped with wood, O.R. of breakage, leakage and freezing.....	1....4
‡	“ Wines, Spirits or Cordials, in wood, O. R. of leakage, breakage, freezing.....	3....5
‡	“ O.R. of breakage, leakage or freezing—mixed cars in wood, cases, jars or stoneware jugs, covered with wickerwork, and capped with wood, will be 5th class for the wood; and 4th class for the cases, jars or jugs in same car.	

‡Shipments of high-class liquors, such as Champagne, Burgundy, Mozelles, etc., must be released.

Litharge.—Same as Lead, Red.

Lithographic Stones, in boxes, O. R.....

‡LIVE STOCK will only be carried at owners' risk; to be loaded, unloaded and fed by owners at their expense and under the following regulations:—

In carloads, full actual weight should be charged for, but not less than the following minimums: (See Notes A and B).

Horses.....	20,000 lbs.9
Cattle.....	20,000 lbs.9
Live Hogs, S.D.	20,000 lbs.9
Live Hogs, D.D., cars not over 29 ft. in length	25,000 lbs.9
Live Hogs, D.D., cars over 29 ft. and under 35 ft. in length	28,000 lbs.9
Live Hogs, D.D., in cars 35 ft. and over in length	30,800 lbs.9
Sheep, S.D.	18,000 lbs.9
Sheep, D.D., cars not over 29 ft. in length	23,000 lbs.9
Sheep, D.D., cars over 29 ft. and under 35 ft. in length	26,000 lbs.9
Sheep, D.D., cars 35 ft. and over in length	28,600 lbs.9

(Inside measurement to govern.)

Dogs, same as Sheep as to weights, valuations, etc.

Calves, under six months' old, same as sheep.
“ Six months' old or over, to be rated same as Cattle.

“ Calves, D.D., same as Sheep, D.D.

NOTE A.—Horses and Cattle, when not weighed at shipping points to be billed at 22,500 lbs., subject to correction at scale points, but not less than 20,000 lbs.

NOTE B.—In case Cattle or Horses are not, or cannot be weighed, an estimated weight of 22,500 lbs. will be charged.

LIVE
Hogs,

b
in
a
s
p
p
A
m

Horse

m
C
w
c

Cattle

si
w

Hogs

S
b
in
*
e

When

p
w
q
e
d

Fowls

lo
H
to
fr
at
at

When

of
ca
LiveSt

w

m

du

ca

Owner

sa

si

ob

be

co

One, tv

or

ni

LIVE STOCK—Continued :—

Hogs, Sheep, Calves or Small Animals must not be loaded under large Animals or Cattle in the same car. *In all cases* where large and small animals are shipped together in same car, they must be kept separate by a partition or by partitions, which must be put up by the shippers at their expense and at their risk as to sufficiency or otherwise. This rule, however, will not be applied to milch cows with their calves.

Horses or Cattle loaded with Hogs or Sheep in mixed carloads, or Horses loaded with Cattle, to be kept separate by a partition, will be charged at the weight for Cattle in carloads and at the highest rate for either.

Cattle and Hogs in mixed carloads, loaded in single-deck cars, will be charged at the weight and rate for Cattle.

Hogs and Calves, or Hogs and Sheep or Hogs, Sheep and Calves, in mixed carloads, will be charged for at the weight for Hogs in carloads, and at the highest rate for either; Calves not six months old being subject to the rate for sheep.

When shippers are allowed to double deck, or partially double deck cars, a quarter deck will be charged 2,000 lbs. extra; over a quarter and not over half a deck, 4,000 lbs. extra; over half a deck full charge for double deck. The cost of putting in part decks to be borne by the shipper.

Fowls or Poultry, in packages, in mixed carloads with Cattle or Horses, Sheep or Hogs (the Cattle or Horses, Sheep or Hogs, to be kept separate from each other and from the Fowls or Poultry), will be charged at the weight for Cattle in Carloads, and at the highest rate for either.

When more than a carload of Live Stock is offered, the surplus will take less than carload weight and rate.

Live Stock in Palace and other Patent Stock Cars, will be in all respects subject to the max. and minimum weights established for the conduct of such traffic in the regular live stock cars of the roads interested.

Owners or drovers may be taken free on the same train with their Live Stock, in consideration of their assuming the risks and obligations mentioned in the contract to be signed by them, and under the following conditions :

One, two or three cars, one person. Four, five, or six cars, two persons. Seven, eight, nine or ten cars, three persons.

Over ten cars in one lot, four persons.

RETURN PASSES WILL NOT BE GIVEN.

LIVE STOCK—Continued:—

‡ LIVE STOCK IN L.C.L. LOTS, AS FOLLOWS:—

*Bull Calves, under six months old.. 500 lbs. each 1

*Bulls, six months and under one year old.....1,000 lbs. each 1

Bulls, one year and under two....3,000 lbs. each 1

Bulls, over two years.....4,000 lbs. each 1

Cattle or Horned Animals:—

One animal.....2,000 lbs. 1

Two animals.....3,500 lbs. 1

Three Animals.....5,000 lbs. 1

Each additional animal in same car 1,000 lbs. 1

Calves:—

Under six months old..... 500 lbs. 1

Over six months and under one year.....1,000 lbs. 1

Colts, under six months old.....1,000 lbs. 1

Hogs, Goats, Sheep and Lambs not crated, not taken except by special authority.

Hogs, Sheep, Lambs and other small animals, in boxes or crates, actual weight..... D1

When small animals are allowed to be taken without being crated, the following will be the minimum weights charged:

A single Sheep, Lamb, Pig or Hog, 400 lbs. each or actual weight if in excess of 400 lbs..... 1

Each additional Sheep, Lamb, Pig or Hog, in same car to same consignee, 200 lbs., or actual weight if in excess of 200 lbs.

Horses, Mules, etc:—

One animal.....2,000 lbs. 1

Two animals.....3,500 lbs. 1

Three animals.....5,000 lbs. 1

Each additional animal in same car 1,250 lbs. 1

Mare and Foal together.....2,500 lbs. 1

Stallions and Jacks.....4,000 lbs. 1

Shetland or Welsh Ponies, one animal.....1,200 lbs. 1

Shetland or Welsh Ponies, each additional animal in same car....1,000 lbs. 1

When other animals are shipped in cars with a mare and foal, or cow and calf, together, under the above special weights, the other animals are to be rated and charged for without reference to the weight charged for the mare and foal or cow and calf.

When other animals are shipped in cars with Bulls, Stallions or Jacks, they are to be rated without reference to the specific weights charged for the Bulls, Stallions or Jacks.

In no case shall the charge for less than carload exceed the charge for a carload.

Owner or agent must accompany each consignment of Cattle or Horses in C.L. or less when the distance is over 100 miles, except by special authority in each case from the General or Division Freight Agent.

LIVE STOCK—Continued :—

Men in charge of L.C.L. lots of Cattle or Horses, on the same train only, will be charged half the ordinary 1st class fare, in consideration of their assuming the risks and obligations mentioned in the contract, and this amount must be shown as a separate item on the way-bill.

No reduction will be made for men in charge of L.C.L. lots of Hogs or Sheep.

SPECIAL REGULATIONS GOVERNING THE RATES UPON LIVE STOCK GIVEN ABOVE, AND RULES APPLYING TO ORDINARY LIVE STOCK OFFERED FOR TRANSPORTATION :—

Agents must thoroughly familiarize themselves with the following, and take particular care to acquaint consignors, or their agents, with the requirements of the Company before accepting Live Stock for transportation.

All shipments of Live Stock must be consigned direct to the party or parties to whom same is to be delivered at destination, and will not be received for transportation when consigned to the order of "....." or notify "....."

The rates and classification of Live Stock as given above, are based upon the following maximum values :

Horses or Mules, not exceeding \$100 each.

Cattle or Cows, not exceeding \$50 each.

Fat Hogs or Fat Calves not exceeding \$10 each.

Sheep, Lambs, Stock Hogs or Stock Calves, not exceeding \$5 each.

*If a full C.L. from one shipper to one consignee, entire contents of car not to exceed \$1,200.

Live Stock will be taken at the above Weights, rates and values only when the Company are fully released, in accordance with the terms of their special Live Stock Transportation Contract, which shall be duly filled up and executed by the shippers, owners, or their agents, and by the station agent on behalf of the Company, and the person or persons travelling with such Live Stock, and receiving free transportation as aforesaid, shall be duly authorized to sign such contract, or contracts, on behalf of the owners or shippers of such Live Stock.

In cases where shippers, owners or agents decline to enter into such contract, the traffic may be taken at double rates, under ordinary liability as common carriers, on the ordinary shipping notes and receipts of the Company, in which case shippers, owners or agents must declare the value of the animals; and in the event of such valuation being in excess of the above figures, the regulations below will govern.

LIVE STOCK—Continued :—

The Company does not agree to transport Live Stock by any particular train within any specified time, nor in time, for any particular market and agents must not give receipts containing such guarantees. Neither will the Company be responsible for any loss or damage occurring by the refusal, failure or inability of connecting lines to receive and forward the stock after tender of delivery.

When stock belonging to two or more persons, or when consigned to different parties, is loaded in same car or when loaded in way-car, a distinguishing mark should appear upon each head of stock. A tag securely fastened to the halter, will be sufficient for Horses or Mules. Upon Cattle or small stock, one or more initial letters should be marked upon the side of each head of stock. Corresponding initials should be placed opposite the name of consignee on the way-bill or manifest so, as to ensure correct and prompt delivery at destination. And in the event of the owner or owners neglecting to comply with the foregoing provisions, or insufficiently marking their stock, the Company shall have the right in their discretion to deliver the same to any one of the consignees without liability to the others of such consignees.

Fancy small stock requiring special care, should be in cages, or coops, or boxed; and agents will recommend owners to forward such animals by regular express line, which has agents in charge to care for them.

Animals known to be vicious, or so spirited that they cannot safely be placed alongside of other stock, and Mares with colts alongside, will not be received unless released.

The Railway Company does not assume any risks from the acts of the animals themselves, or to each other, such as biting or kicking. Such risks must always be borne by the owner. Nor will the Company be responsible for any stock escaping. Nor will the Company hold itself liable for injury to Calves, Hogs, or other stock from suffocation, exhaustion, heat or cold.

Except when shipped in a full car, sucking Calves, accompanying Cows, will be charged for in the manner provided for such like small animals.

In case of accident, unavoidable delay or other reason, because of which it becomes necessary to send Live Stock forward unaccompanied, it will be permissible to do so; and if for this or other reason, feed is furnished

LIVE STOCK—Continued :—

for the stock by or through the Railway Company, a charge will be made for the same and collected from the consignee upon delivery. Agents will note such charges or expenses on the way-bill or manifest and advise agent at destination by telegraph.

SPECIAL REGULATIONS FOR LIVE STOCK AND VALUABLE ANIMALS.

Race Horses, Stallions, and other high-priced animals, when shippers are unwilling to have them transported at the above list of values for ordinary stock, will be taken only by special arrangement and at ONE AND ONE-HALF 1ST CLASS RATES, calculated on the estimated weights named below, and agent must not accept for shipment such valuable animals without first communicating with the Gen. or Divsl. Freight Agt.

When value of each animal exceeds :—	And is not over :—	For one animal charge :—	For two or more animals in same car, to one consignee, charge each :—
		Pounds	Pounds
\$ 100 00	\$ 400 00	4,000	3,000
400 00	600 00	4,500	3,500
600 00	800 00	5,000	3,700
800 00	1,000 00	6,000	4,500
1,000 00	1,500 00	8,000	6,000
1,500 00	2,000 00	10,000	7,500
2,000 00	2,500 00	12,000	9,000
2,500 00	3 000 00	14,000	10,500
3,000 00	3,500 00	16,000	12,000
4,000 00	4,500 00	20,000	15,000
4,500 00	5,000 00	22,000	17,500

Animals of greater value than given above will be subject to a corresponding advance in weights furnished in the above table.

Cattle, or small animals valued by Shippers at more than the maximum valuations given for ordinary stock and not over \$100 each, will be rated at 200 lbs. extra for every additional \$10 or part thereof in value until the charge for animals over \$100 each is reached, when the latter and succeeding valuations in above table will apply. In cases where the owner, shipper or agent of such valuable animal or animals refuses to sign a special agreement for the transportation of such animal or animals and insists upon the Company taking the same on their common law liability, in such case the rates for transport without special agreement shall be three times the first class rate as fixed above.

‡Lobsters, Fresh in casks or boxes, O.R.	1
“ in tins.—See Canned Goods.	
Logwood and Logwood Extract.—Same as Dye Stuff.	
Looking Glasses.—See Glass Mirrors.	
LUMBER, common, and other to be loaded and unloaded by owners, will only be carried at the convenience of the Company, and at the risk of the owners, shippers furnishing their own stakes. Lumber, Common to include :—	
Ash, Birch, Beech, Cedar, Chestnut, Elm, Hemlock, Hickory, Larch, Maple, Oak, Pine, Poplar, Spruce, Sycamore, Tamarack, Willow, Staves, Laths, Shingles, Clapboards, Bolts, Edgings, Slabs, Shooks, Heads, Hoops, Hoop and Hop Poles, Blocks, Raftsmen's Floats, Oars, Traverses, Toggles and Withes, Pegwood, Poplar and Pulp Wood	4...10
Lumber, common, planed, tongued and grooved	4...10
Rails, Fence Posts, Telegraph Poles and Ties of all descriptions, will only be taken special contract.	
Billets, Wooden10
Blocks, Maple10
Cherry	3...7
Mahogany, Rosewood, Walnut, Lignum Vitæ, and other valuable Hardwoods	3...6
Lumber one-eighth of an inch thick or under to be rated as Veneering; over one-eighth of an inch thick as Lumber.	
Ship Knees, minimum 24,000 lbs per car...	4....
Note. All cars, with Lumber, etc., should be loaded to their full capacity, as marked upon them, at C.L. rate per 100 lbs Cars without capacity marked on them should only be loaded with 24,000 lbs. See Rule 1. For minimum C.L. weights see Rule 1.	
*Lumber, Planed, Painted, etc.—See Joiners' Work.	
Lye, Concentrated	3...5

M

Macaroni	2....4
Machine or Cattle Cards	1
‡MACHINERY (AT O.R. IN EACH CASE):—	
* Adjustable Lever Presses, projecting parts detached.....	1
* Addressing Machines, boxed.....	D1
Band Saws.....	1
Bark Mills.....	1
Bolt Cutters.....	1
Bone Mills or Choppers, set up	1
“ “ K.D., crated or boxed.....	2
Bran Dusters.....	D1
Brick Machines, set up.....	1
“ “ K.D.....	3
* Caloric Engines	1

MACHINERY—Continued :—

	Cards, Cotton or Woollen.....	D1
	Cob Mills	1
	Cornice Machines or Brakes, Shears, Beaders, Folders, Seamers, Groovers, Formers and Burring Machines.....	1
	Cotton Presses	1
	Cider Mill Presses	1
	Cheese Presses, set up.....	D1
	Cheese Presses, K.D.....	1
*	Condensers, Steam	3
*	“ or Accumulators (hydraulic) ..	3
	Cylinders, for hoisting machines	3
	“ Gas, for R.R. car supply	1
	“ Locomotive	3
	“ Steam Feed	3
	“ Pump, loose.....	1
	“ “ in crates, boxes or bbls ...	3
	“ Pump or Steam, porcelain or brass lined, loose	1½
4...10	“ Pump or Steam, porcelain or brass lined, in crates, boxes or bbls..	1
4...10	“ Graphophone or Phonograph, paper or wax, boxed	1
	Ditching Machines	1
	Drag Saws, with horse-power, Sweep	1½
	Drilling Machines (hand), iron, crated or bxd.	2
3...7	“ “ (power)—Same as Machinery, N.O.S.	
3...6	Dustless Elevator Separators, set up.....	D1
	“ “ K.D. and boxed	1
	Engines, Portable or Stationary	1
4....	“ “ (not Traction) on flat cars, minimum 5,000 lbs. each; actual weight if more.....	1
	Flour Dressers, with iron drums, set up.....	1
	“ “ N.O.S.—Same as Purifiers.	
	Flour Feeders, set up	1½
	“ “ K. D.....	1
	Flour Roller Mills, iron, set up.....	1
	Fulling Machines.....	1½
3...5	Fulling Machines and Clothes Washers (steam power).....	1
	Gauges, Steam or Water, with or without glass tubes, boxed	1
2...4	Grain Conveyers and Fixtures (fixtures bxd.)	2
1	Grain Weighing Machines & Conveyors com- bined (iron and wood parts crtd. or bxd.)	2
	Hemp Machines	1
	Horse-Powers, Sweep	1½
	“ “ Tread.—See Agricultural Im- plements.	
*	Horse-Powers. Bevel Gear, for Grain Ele- vators	1
	Knitting Machines, Power.....	1½
	Lathes, wood or iron	1
D1	Laundry Machinery (Steam Power).....	1
1	Looms	1½
3		
1		

MACHINERY—Continued :—

	Meat Choppers, in frame	1
	Milling Machines, Iron Working.....	1
	Mortise Machines	1
	Moulding Machines.....	1
	Nail Machines	3
	Ore Pulpers or Crushers, set up.....	D1
	“ “ “ K. D., detachable parts detached and bndld. or crtd.	1
*	Paper-Cutting Machines, in frame, set up .	1½
	“ “ “ K. D., in pieces ..	1
	“ “ “ K. D., crtd. or bxd.	2
	Planing Machines and Jointers.....	1
	Printing Presses	1
	Purifiers, set up.....	D1
	“ “ K. D. and boxed	1
	Re-Sawing Machines.....	1
	Road Graders— Same as Road Scrapers.	
	Road Scrapers, set up, wheels, poles and scrapers off.....	D1
	“ “ K. D. flat.....	3
	Saw Mills, Portable.....	1
	Sawing Machines, Tread.....	3-1
	Saw Tables	1
	Shearing Machines.....	1
	Shingle Machines.....	1
	Smut Machines	1½
*	Steam Shovels, on own wheels, actual weight of car, trucks and contents to be charged for, minimum weight 30,000 lbs.; man in charge carried free, no free return passage to be given	3....6
*	Steam Shovel Dippers, iron or steel	3....5
	Steam Shovel Parts, loaded on flat or gondola car, when forming part of and accom- panying Steam Shovels on own wheels6
*	Steam Shovels, N.O.S., same as Derrieks.	
	Street Sweeping, set up	3-1
	“ “ K. D., crated or boxed	1
	Stumping Machines, K. D., detachable parts removed.....	2
	Swing Cut-off Saws (Iron).....	1
	Tenoning Machines.....	1
*	Stokers.....	1
*	Water Jackets, for Smelters	1
*	Wool Presses	1
	Machinery, not otherwise specified, in frame, “ N. O. S., closely boxed or crated ...	1½
	“ Heavy, K. D., not otherwise specified, 1,000 lbs. per piece or over, with connections and detachable parts removed and boxed.....	2
	“ all kinds, including engines (C. L. min. 20,000 lbs., N. O. S.)6
‡	Machines, Sewing, set up, not boxed or racked, O. R., minimum C. L. 16,000 lbs.	3-1....3
‡	“ “ set up, boxed or racked, O. R., minimum C. L. 16,000 lbs.....	1....3

‡Machiner

“

+ “

1

+ “

+ “

D1

* “

* “

* “

* “

* “

* “

* “

* “

* “

* “

* “

* “

* “

* “

* “

* “

* “

* “

* “

* “

* “

* “

* “

* “

* “

* “

* “

* “

* “

* “

* “

* “

* “

* “

* “

* “

* “

* “

* “

* “

* “

* “

* “

* “

* “

* “

* “

* “

	*Machines, Sewing, K.D. and boxed, O.R.....	2....4
	“ “ Stands, K.D., in bundles.....	1....4
1	+ “ Paging and numbering, O.R., crated	
1	“ or boxed.....	1½
1	+ “ Automatic, for registering weight,	
1	“ height, strength or lung power, and	
3	“ for delivery of confectionery and	
D1	“ for similar purposes, O.R., well bxd.	1½
ble	* “ Biscuit, or Dough Kneading or Mix-	
td. 1	“ ing (without tubs or vats), set up,	
o. 1½	“ boxed or crated.....	1
1	“ Same, K.D., boxed or crated	2
kd. 2	“ Tubs or Vats for above.—Same as	
1	“ Cheese Vats.	
1	Madder, in cases	2
D1	“ “ in barrels or casks.....	3
1	*Magnesia, in boxes or kegs.....	1....4
1	* “ “ in bags, bbls. or casks.....	3....5
	Majolica Ware—Same as Crockery.	
nd	Malt—See Grain.	
D1	*Malt Extract—Same as Liquors, Native Wine, etc.	
3	Mangles, set up, not boxed.....	1½...6
1	“ “ crated	1....6
3-1	“ “ K.D., and boxed	2....6
1	+Manilla, in bales, O.R.....	3....5
1	Manure, Stable, in cattle cars only.....	...10
1	Maple Sugar—See Sugar.	
1½	“ Syrup—See Syrup.	
ght	+Maps or Charts, mounted or unmounted, bxd., O.R.	1
be	Map Cases, crated or boxed.....	1
000	+*Marble Mantels, O.R., boxed	2....5
ree	* “ Basins, in boxes or barrels	2....5
....6	“ Polished, Carved or Lettered, not boxed.	
3....5	“ —NOT TAKEN.	
ola	+ “ Polished, Carved or Lettered, boxed,	
om-	“ O.R., prepaid	1....5
els	+ “ Slabs, Blocks or Spires, Polished, not	
s.	“ Carved or Lettered, boxed, O.R. ...	3....5
3-1	“ Slabs, Blocks or Spires, Unwrought ...	4....7
1	+ “ Tile, O.R.....	4....7
arts	“ Dust, in barrels	4....7
2	“ Blocks, Rough from Quarry10
1	Marbles, in boxes or casks.....	2
1	Marsh Hay.—Same as Hay.	
1	Masts. Taken by special contract only.	
1	*Matches in bxs., securely bxd. (C.L. min. 20,000 lbs.)	1....5
me, 1½	“ loose in cases.—NOT TAKEN.	
1	“ in outer paper boxes not taken unless	
ted,	securely packed in wooden cases.	
with	Match Splints	3....7
arts	Mats and Rugs	1
2	Matte.—Copper, Nickel, or Copper-nickel, value	
min.	not to exceed \$100 per ton and to be so	
....6	limited by written release	4....6
ted,	Mattress Binding.—Same as Dry Goods, N O.S.	
bs. 3-1....3	Mattresses.—See Furniture.	
R.,	Matting—Cocoa, Hemp, etc.....	1....4
1....3	Meal.—See Flour and Meal.	

L.C.L. C.L.

...D1	MILLINERY GOODS:	
... 1½	* Artificial Flowers in boxes, O.R., P.P. or	
... 1	guaranteed	D1
... 1	Feather Plumes for hats and bonnets, boxed ..	D1
... 2	Feather Tips for millinery purposes, boxed ..	D1
... 1	* Hats and Bonnets, trimmed, boxed, O.R.	D1
... 1....4	* Millinery Goods, N.O.S., O.R.	1
pd. 1....4	* Straw Braid, boxed	1
to	* Straw Goods, N.O.S., boxed	D1
... 2....4	* Mineral Pulp.—See Agolite.	
... 1....4	Mineral Waters.—Same as Aie.	
xed 3....5	Mineral Wool	3....5
... 3....5	* Mistletoe.—See Holly.	
ags 2....5	Moccasins.—Same as Boots and Shoes.	
csks 3....5	Modeis for Statuary and Stucco Work	D1
... 4....5	* Molasses, in wood, O.R. of leakage	3....5
... 2	Mops, in bundles	1....5
... 3	“ in boxes	2....5
... 1	* Mop Sticks, with head and wringer attach-	
... 1....6	ments, crated or boxed	2....5
full	* Same, without attachments, same as Handles.	
ack-	Mortar Stain, or Coloring, in bags, bbls. or casks	3....5
l as	Moss, Evergreen, in crates, boxes or bbls., prep'd.	D1....4
de- D1	“ Litter (stable bedding, etc.), pressed, in bales	4....10
lbs.) 1....6	* “ Quilted, for lining walls of houses, in bales	1....3
... 3....4	* “ N.O.S., in sacks or crates	1
... 4....10	* “ “ in boxes or barrels	2
ds. 1	“ “ in pressed bales	3....5
... 2	Mouldings—Gilt or Finished (wooden or com-	
ve). 3....5	position—not plaster), in bbls.	D1....4
... 1....4	“ Gilt or Finished (wooden or com-	
... 2....5	position—not plaster), crtd. or bxd.	1....4
nes.	“ Common Building.—See Joiners' Work.	
... 1½	“ Picture, in white, in bundles	1....4
ratd 2....4	“ Picture, in white, crated or boxed ..	2....4
d in 1....3	Mucilage, in glass, packed in boxes or barrels ...	1
... 1	“ in tins, packed in boxes or barrels ...	2
ight	“ dry, in boxes	2
ases	Musical Instruments.	
, in	“ Organ and Piano Keys, boxed ..	1
ged,	“ “ Organ Reeds, boxed	1
	+ “ “ Church Organs, N.O.S., K.D.,	
	loaded and unloaded by	
	owners, O.R.	D1....6
	+* “ “ Church Organs, K.D., boxed or	
	crated, O.R.	1....4
	* “ “ Claviars.—Same as Pianos.	
	+ “ “ boxed, N.O.S., O.R.	D1
	+ “ “ Pianos, Organs, Melodeons,	
	Harmonicas and Vocals,	
	boxed, O.R., released	1....4
	“ “ Mouth Organs.—Same as Toys.	
	+* “ “ Music Boxes, boxed, O.R.	D1
	+ “ “ All kinds, C.L. min. 20,000 lbs.	
	* Mustard, in jars or tins, loose, O.R.	1....4
	* “ “ packed in boxes	2....4
	Mustard Seed	2

N

L.C.L. C.L.

Nails.—See Iron.	
Naphtha.—Same as Coal Oil. Must not be taken for shipment by water.	
Neck Yokes, unfinished in white	3
“ finished	2
Newspaper Prints.—See Printed Matter.	
Nitro Glycerine.—NOT TAKEN.	
Nitrate of Soda.—See Soda.	
+*Notions, not otherwise specified, in trunks, O.R.	1½
+*Notions, not otherwise specified, in boxes, O.R.	1
Nutmegs.....	1....3
+*Nuts, Edible, in bags, O.R.	1....4
“ “ in boxes or barrels	2....4

O

*Oakum, in pressed bales.....	3....5
*Oars, Boat (C.L. minimum 20,000 lbs.).....	1....6
Oats.—See Grain.	
Oats, Rolled. Same as Flour and Meal (estimated weight 200 lbs. per bbl.)	
Oatmeal.—See Flour and Meal.	
Ochre, in cans, kegs or boxes	2
“ in barrels or casks	3....5
*Office or Shop Fittings.—See Joiners' Work.	
+*Oil Cans, Glass, in tin jackets, crated or boxed, O.R. (C.L. Minimum 20,000 lbs.)	2....5
*Oil Cans, Tin.—See Tinware.	
*Oils of Canadian manufacture, as follows :—	
+ Oil, in glass or stone, well packed, O.R.	1
+ “ in kegs or cans, securely boxed, O.R.	2....4
+ “ in wood, O.R.	3....5
+ “ for machine or lubricating purposes, in wood, O.R.	3....5
“ Coal or Mineral, for illuminating purposes, to be rated at 450 lbs. per bbl., unless actual gross weight be less.	
Oil Cake and Oil cake meal.....	4....8
+*Oil-Cloth, wrapped, crated or boxed, 13 ft long and over, loaded in box cars, O.R.	1....5
+ “ wrapped, crated or boxed, under 13 ft. long, loaded in box cars, O.R.	3....5
“ Table, Carriage or Enamelled, under 13 ft. long, crated or boxed.....	2....5
Oiled Clothing or Oiled Skin Clothing—Same as Clothing.	
+*Oil Well Supplies, consisting of Auger Stems, Belts, Brake Bands, Brake Levers, Bull Wheels (wood), Casing Heads, Drilling Tools, Jars, Joints, Reamers, Rig Irons, Rope Sockets, Sand Pumps, Sand Reels, Sinkers Bars, Sucker Rods, Temper Screws, Tongues, Wrenches, O.R.	3....5
Onions.—See Vegetables.	
+*Opticians' Instruments, boxed, O.R.	1
Oranges.—See Fruits.	

ORE :—

* Iron
Mat
Mica
Nick
Silv
* All I
*Ore Cru
Organs.
Orname
Oxide o
Oxygen
Ox Yok
+*Oysters

+* “
“
*Oziers
(C

Pails.—
+*Paintin

+ “

+* “

+ “

Paints

+ “

“

“

“

“

Palm

+*Panor

PAP

“

“

* “

“

+ “

“

“

ORE:—

* Iron, Lead, Copper, Arsenical	4...10
Matte.—See Matte, page 60.	
Mica, or Crude Mica, value not to exceed \$100 per ton, and to be so limited by written release	4...7
Nickel—Value not to exceed \$100 per ton, and to be so limited by written release	4...10
Silver, Gold—Value not to exceed \$100 per ton, and to be so limited by written release	4...7
* All kinds, C.L. minimum 30,000 lbs.	3...5
* Ore Crushers	
Organs.—See Musical Instruments.	
Ornaments.—See Plaster of Paris.	
Oxide of Iron, in boxes or bbls.	3...5
Oxygen Gas, in iron or steel tubes or cylinders.	3...5
Ox Yokes	2
+ Oysters and Clams, Fresh, in kegs or pails, or in cans, boxed or crated. O.R.	1...3
** “ “ Shells, whole or ground, in bags, bxs. or bbls., O.R., p'pd	3...5
“ “ Pickled.—See Pickles.	
* Oziers (Willow Reeds), in boxes, bales or bbls. (C.L. minimum 20,000 lbs.)	2...6

P

Pails.—See Woodenware.

+ Paintings, etc., boxed and released, value not exceeding \$20 per package, and to be so expressed on shipping note	1
+ “ Pictures, Engravings, Chromos, etc., boxed and released, value over \$20 but not to exceed \$50 per pkg., and to be so expressed on shipping note.	D1
+ “ over \$50, not exceeding \$200 in value, per package, boxed and released, value to be stated on shipping note.	3-1
+ “ over \$200 per package. Taken by special contract only. Shippers must declare value.	
Paints, Dry, in boxes, barrels or kegs	3...5
+ “ in oil, in cans, jacketed, loose. O.R. lkg.	1
+ “ in oil, in cans or pails, boxed, crated or packed in barrels	3...5
+ “ not otherwise specified, in bbls., kegs, iron drums	3...5
+ “ in buckets	2...4
Palm leaf, in bundles	1½
+ Panorama and Theatrical Scenery, O.R.	D1...4
PAPER, Stationery, in boxes	1
+ “ Scrap or Waste, in bags, sacks or crates	2...10
+ “ “ in pressed bales	4...10
* “ “ (C.L. min. 24,000 lbs.)	1
+ “ Goods, such as Collars, etc., in boxes	3...4
+ “ Hangings, in bundles or bales, O.R. of chafing	1...4
+ “ “ in boxes	1
+ “ Patterns, in cases, prepaid	1

PAPER—Continued:—

	PAPER.—Continued:—	
	Cigarette, in boxes	1
++	“ Printing or Wrapping, O.R.	3...5
++	“ Strawboard	3...5
+++	“ Building and Roofing, O.R.	4...5
++	“ Bags, in bundles, bales or boxes, O.R.	3...5
	“ Boxes.—See Boxes.	
	“ Toilet, in boxes	3...5
	“ Egg Fillers, folded flat, boxed, solid ..	3...5
	“ Tubes or Rolls, for fireworks, etc., boxed or crated	1½
++	“ Printing, patent inside (printed on one side), in bundles or boxes, O.R.	2...4
	“ Lanterns, K.D., boxed	D1
	“ Masks, boxed	3-1
*	“ Pasteboard, in bundles	2...5
*	“ “ in boxes	3...5
	“ Flat.—Same as Printing Paper.	
+++	“ Blotting, in bdls., O.R., crates or boxes	1...4
++	“ Card, or Cardboard, in bundles, O.R., crates or boxes	2...4
	“ Labels, in boxes	2...4
7-1	“ Waxed or oiled, in bundles, O. R., crates or boxes	2...4
*	“ Woodboard	3...5
	Papier Mache Goods	D1
	Paris Green, in boxes, bbls. or casks	2...4
	“ “ Liquid, in bbls	4...7
	* Pasteboard.—See Paper.	
	Paraffine Wax.—See Wax.	
	“ Candles.—See Candles.	
	Patent Medicines, shipped by manufacturers...	1...3
‡	Patterns, Wood or Metallic, O.R.	1½
	Peaches.—See Fruit.	
	* Peach Pits or Stones, prepaid	3...5
	Pearline or other Washing Powders—See Wash- ing Compounds.	
	Peas.—See Grain.	
	“ Green.—See Vegetables.	
	Pears.—See Fruit.	
	Peat	3...10
	Peat Moss.—See Moss.	
	Pelts and Peltries.—See Hides and Skins.	
	Pencils, Lead, in boxes	1
	“ Slate, in boxes	2
	Pepper.—See Spices.	
	Pepper Sauce	1
	Perfumery, in cases	1½
	Petrolatum.—Same as Vaseline.	
	Petroleum Coke	4.. 10
	Phenyle (disinfectant), dry, in bxs, bbls, or csks.	2...4
	Phosphate	4...10
	Phosphorus, only taken in tins, hermetically sealed and well packed in boxes	D1
	Photographic Material	1
	Pianofortes.—See Musical Instruments.	
	Piano Legs and Stools, wrapped or crated	1
	“ “ “ boxed	2

+* Pickle
+* “
+* “
Picture
Picture
Pigs' E
Pike P
Pillow
Pill B
Pile D
Piles.-
Pimen
Pins, ?
† Pine A
Pipe C
Pipe.-
Pipe,
Pipe,
Pipe (C
† Pipes,
“
Pitch,
Plant
† Plant
†* Plast
†* “
Plast
“
† Plast
f
l
Plast
* “
Plate
Plate
Plate
Phun
† Phun

+
+*
Polis
Porc
Pork
Port
Pol
+* Pol
+* In
+* Sa
+*
+*

	++ Pickles, in glass, boxed, O.R.	1....5
	* " in bulk, in pails, kegs or barrels	3....5
	* " in stone jars, crated	1....5
	* " " boxed	2....5
	Pictures.—See Paintings.	
	Picture Frames.—See Frames.	
	Picture Frame Backing, in bundles	4....7
	Pigs' Feet.—See Meats	
	Pike Poles, in bundles	3....5
	Pillows.—See Feathers.	
	Pill Boxes	D1
	Pile Drivers.—Same as Derricks.	
	Piles.—Taken by special contract only.	
	Pimento.—See Spices.	
	Pins, Toilet, in boxes	2
	† Pine Apples, O.R., prepaid	1....3
	Pipe Clay	3
	Pipe.—See Earthenware.	
	Pipe, Iron.—See Iron.	
	Pipe, Wooden, N.O.S.	2....6
	Pipe (Tubing) for wells, etc.—See "Tubing."	
	† Pipes, Smoking, N.O.S., in cases, O.R.	1
	" " common clay, in cases	2....5
	Pitch, in barrels	4....7
	Plant Boxes, empty, splint or wood, nested	1½
	† Plants, in boxes, prepaid, O.R.	D1
	†† Plaster Board (Composition) for buildings, O.R., crated or boxed	4
	++ " " in packages or bulk7
	† Plaster, Land	4....10
	" " Medicated (Bug Killer), in bbls.	4....7
	† Plaster Mouldings or Ornaments (not images) for cornices or building purposes, in boxes, bbls. or casks, O.R.	1....4
	Plaster of Paris and Stucco, in barrels or bags.	4....10
	* " " Ornaments & Images.—See Images.	
	Plated Goods or Ware	1
	Plate, Electrotpe or Stereotype	1
	Plate, Old Stereotype, returned, in boxes or bbls. when name of article is plainly marked on outside of package, and stated in Ship- ping Receipt and Bill of Lading	3
	Plumbago, Crude	3....5
	† Plumbers' Crockery and Earthenware, in crates, boxes or bbls., O. R.	2....4
	+ " Crockery and Earthenware, in bulk, O. R., to be loaded and unloaded by shippers and consignees4
	" Blast Furnaces	1
	+ " Materials, N.O.S., in boxes or bbls.	2....4
	Polish, Shoe.—See Blacking.	
	Porcelain.—Same as Crockery.	
	Pork.—See Meats.	
	Porter.—See Ale.	
	†† Polishing Compound—N.O.S.	
	++ In glass, earthenware or tin, pkd. in bxs., O.R.	1....4
	++ Same in barrels, O.R.	2....4
	* In bulk, in bbls.	3....5

Quills in boxes.....	D1
Quilts, Eider Down, in boxes or bales	D1
*Quilted Moss.—See Moss.	

R

Radiators, including coils, pipes and fittings....	3...5
Rags, in sacks, minimum 20,000 lbs.	3...10
“ pressed, in crates, minimum 20,000 lbs....	3...10
“ pressed in bales, minimum 20,000 lbs....	4...10

*RAILWAY EQUIPMENT AND SUPPLIES:

* Brake Beams	4...7
+ Cars, on own wheels, O.R., released:—	
Sleeping.....each, 15c. per mile	
Passenger.....“ 12c. “	
Mail, Baggage or Express....“ 10c. “	
Freight Box, Vans or Auxiliary “ 8c. “	
Platform and Coal.....“ 6c. “	
4-Wheel Box, Platform or Coal “ 5c. “	

Minimum charge \$6.00.

Railway cars requiring transportation on other cars, taken by special contract only.

Cars, on own wheels—One man will be passed free in charge of each shipment of passenger cars on their own wheels. No return passes to be given.

* Car Brakes and Fittings, N.O.S.....	3...5
Car Trucks	4...7
Car Springs, Rubber, Spiral or Elliptic....	3...5
* Cow Catchers, set up	D1
“ K.D., in box cars.....	3...5

+ Engines, Locomotive, and Tenders, also Snow Plows, on their own wheels, actual weight—Shippers must declare weight —O.R., released.....	6
---	---

Locomotive Engines must be accompanied by a person fully competent to take charge of and travel with them, who will be passed free under the same conditions and regulations as in case of men traveling in charge of live stock.

+ Headlights, not boxed, O. R.	D1
+ “ boxed, O.R.....	1
+ Iron Cattle Guards	4...7
“ Fish Plates, Spikes, Bolts, for track laying purposes.....	4...7
“ Frogs and Crossings.....	4...7
* “ Car Couplings	4...7
* “ Car Replacers (iron castings)	4...7
“ Chairs, Tyres	4...7
“ Wheels, Axles, Rails	4...7
“ Journal Boxes	3...5

* Snow Plows, N.O.S., K.D., in box cars	1...7
Switch Gates, Semaphore Poles and Signal Material, iron or wood	4...7

Raisins.—See Fruit.

Range Boilers.—See “Boilers.”

Rattan.—See Furniture. —67—

	R—Continued.	S	L.C.L.	C.L.
Refrigerators, set up.....			1	
“ “ K.D.....			3	
* “ C.L., in common cars 35 feet long and under; minimum 16,000 lbs....				4
“ in furniture or racked platform cars; minimum 20,000 lbs.....				4
Rennets, in wood.....			2	
++*Retorts, O.R., N.O.S.			2	
++*Retorts, Fire Clay, O.R.			3....5	
Resin.....			3....5	
Rice, in packages.....			3....5	
Rice Flour.....			3....5	
Rice Meal.....			3....5	
*Rice Root in bales (min. C.L. 20,000 lbs.).....			2....5	
Road Scrapers.—See Machinery.				
Roofing Composition, in barrels or casks.....			4....7	
“ Material consisting of sand, gravel, tar, cement, and roofers' implements ..			4....7	
Root Beer Extract, in glass, packed.....			1....3	
Roots, Garden.—See Bulbs and Roots.				
Roots, Seneca, in boxes, bbls., or bales.....			1....3	
Ropes.—See Cordage.				
Rosewood.—See Lumber.				
Rubber, Crude.....			3....5	
Rubber Goods, Boots, Shoes, Socks.....			1	
“ Belting, Hose and Packing.....			2....4	
“ Old Rubber Scrap.....			3....5	
* “ Shoddy, in bags or barrels.....			3....5	
“ Springs.—See Car Springs.				
* “ Substitute (Vegetable Oil Fibre), in bags or sacks.....			3....5	
“ in packages, not otherwise specified....			1	
“ Rollers for Clothes Wringers, not boxed.D1....			4	
“ “ “ “ not bxd.or crtd.			2....4	
Rugs, in bales.....			1	
Rum.—See Liquors.				
Rushes, in bales or boxes.....			1	
*Rustic Work, light and bulky, C.L.min.20,000 lbs.D1....			6	
Rye.—See Grain.				

S				
SADDLERY :				
++* Saddles & Harness, loose or bbls, N.O.S., O.R..D1....			4	
* “ “ in trunks.....			1½....3	
* “ “ in boxes.....			1....4	
* Saddle-trees and Sweat Pads.....			1	
* Hames, in bundles.....			1....5	
* “ in boxes or casks.....			2....5	
* Horse Collars in bundles.....			1½....4	
“ “ in boxes, barrels or sacks.			1	
* Saddlery Hardware, in boxes or barrels....			2....4	
++* “ “ in trunks, O.R.....			1....3	
* Sleigh Bells, in cases.....			1....4	
* “ “ (unmounted) in boxes or barrels.			2....4	
Safes, Bread, Meat, Milk or Cheese.....			4-1	
“ Iron.—See Iron.				
Sago, in packages.....			2....5	
Sails, in bales.....			2	
Saleratus, in boxes or barrels.....			2	

		—Continued.	L.C.L.	C.L.
L.C.L.	C.L.			
...	1	Salt, in small bags or boxes.....	3	5
...	3	“ in sacks or barrels (or C.L. in bulk)	4	10
ong		“ in glass, boxed	2	
s...	4	“ Cake	4	10
orm		Salts, Epsom	3	5
...	4	* “ Effervescent.—Same as Drugs & Medicines.		
...	2	“ Glauber, in boxes or barrels	3	5
...	2	* Saltpetre, in boxes or barrels	3	5
...	3	+ Samples, in trunks, O.R., released	1½	
...	5	Sand, in packages	4	
...	5	Sand.....		10
...	5	“ Bird.—See Gravel.		
...	5	“ Paper	2	5
...	5	“ Screens	1	
...	5	Sapolio.—Same as Common Soap.		
...	7	Sardines.—Same as Canned Goods.		
tar,		Sashes.—See Joiners' Work.		
s...	4	Sashweights, loose.....	1	
...	7	“ in bundles, boxes or bbls.....	4	5
...	3	Sauces.—Same as Preserves.		
...	3	Saur Kraut.—Same as Pickles.		
...	3	Sausage Casings, in barrels or kegs.....	3	5
...	5	Sausages.—See Meats.		
...	5	Sawdust and Shavings (min. C.L. 20,000 lbs.)...	3	10
...	1	Sawbucks, Wooden, packed in bundles.....	2	
...	4	Saws, loose or on boards.....	1	
...	5	“ boxed	2	5
...	5	“ Buck, in bundles.....	1	
...	5	Sawing Machines.—See Machinery.		
ags		Saw Mills, Portable.—See Machinery.		
...	3	Scales or Machines, automatic for weighing, bxd.	1	5
...	1	“ N.O.S., and Scale Beams, not boxed	1	5
ed. D1	4	“ N.O.S., boxed	2	5
td. 2	4	“ Hopper, stationary or portable, K.D.,		
...	1	boxed (with Hopper).....	2	5
...	1	“ Hopper, stationary or portable, K.D.,		
...	1	boxed (without Hopper).	3	5
...	1	“ Portable Platform (with or without		
lbs. D1	6	wheels), K.D., boxed.....	3	5
		** “ Portable Platform (with or without		
		wheels), O.R., not boxed.....	2	5
		“ Waggon or Track, K D.	3	5
		“ Warehouse Platform, stationary, K.D..	3	5
R.. D1	4	Scale Beams and Weights, boxed	3	5
...	1½	“ Boards, in bbls	3	5
...	1	“ Weights, metal, boxed	3	5
...	1	* “ “ loose, 50 lbs. each or		
...	5	over.—Same as Castings.		
...	5	+ Scientific Instruments—Barometers Thermom-		
ks. 1		eters, Cameras. Pocket Compasses, Eye-		
...	4	glasses, Graphophones, Kinetoscopes, Lor-		
...	3	gnettes, Opera Glasses, Phonographs,		
...	4	Phonograph Cabinets, Stereoscopes, Stere-		
els, 2	4	opticon Lanterns and Fixtures, O.R., boxed	1	
...	4-1	+ Scientific Instruments and Apparatus, N.O.S.,		
...	2	O.R., boxed	1½	
...	5	Scoops, Spades and Shovels.—See Hardware.		
...	2	* Screenings of Coffee & Flour Mills (chicken feed)	4	8
...	2			

L.C.L. C.L.

Sign B
*Silica C
Silico.-
++Silver
Sisal, i
Sizing,
Skewer
Slag, M
Slate, I
“ I
“ S
++ “ I
++ “ I
++ “ S
++ “ S
+ “
“
Sledsa
Sleigh
Smoke
Snows
“
Snow
Snuff,
Soap,
“
“
“
“
Soaps
+ “
“
Soda,
“
“
* “
“
“
“
“
“
“
“
Solde
Spar
Spars
Spelt

... 2...5

...D1

... 3...5

... 1...7

...OS.,

... 2...4

... 3...5

... 1...4

...els,

... 2...5

...age 3...5

... 3...8

...gs,

... 2...5

... 3...5

... 3...5

...oad

... 4

... 3...5

... 2...4

... 1

... 3...5

... 4...7

...bbs. 3...5

...23) 1

...bs.) 2...5

... 1

... 2...5

... 2...5

...lass

...D1

...3-1

...R... 1

...der D1

...for

...etc.,

...D1

...ses,

...xd.D1

...D1

...bs.) 1...5

...lbs) 3...5

...D1

... 1

...O.R.D1

... 1½

... 1

Sign Boards.—Same as Advertising Boards.

*Silica Grit.—See Gravel.

Silico.—Same as Common Soap.

+*Silver-plated Goods or Ware, N.O.S., bxd., O.R.

1

Sisal, in bales

3...5

Sizing, in sacks or barrels

2

Skewers, wooden, in boxes or bbls

2...5

Slag, Mill, and Cinders, prepaid

...10

Slate, Blackboards, crated or boxed

3...5

“ Floor, in barrels, casks or boxes

4...5

“ School, in boxes

2...4

+ “ Roofing, O.R.

3...10

+++ “ Manufactured and Marbleized, well bxd. O.R.

1...4

+++ “ Slab, Manf'd, not Marbleized, well bxd, O.R.

4...2

+++ “ Slab, Manufactured, not Marbleized, not

boxed, O.R.

...5

+ “ Wash Tubs, Sinks and Tanks, loose, O.R.

2...4

+ “ “ “ nstd., crtd. or bxd.

3...5

Sleds and Sleighs, Children's or Hand.—See Vehicles.

Sleigh Stuff.—See Carriage Goods.

“ Shoes, Iron and Steel

3...5

Smoke Stacks.—See Iron.

Snowshoes, in bundles

D1

“ in boxes

1

Snow Shovels, Wooden, in bundles

1

Snuff, in jars or bladders

1½

“ in boxes, barrels, casks or kegs

1

Soap, Fancy, Castile or Toilet, foreign, in boxes

1...3

Toilet or Fancy, Domestic, in boxes

2...5

“ Oil or Soft, in barrels

4...5

“ Show Cards when shipped with Soap.—

Same rate as the Soap.

“ Common in boxes, or in barrels with or

without heads, at valuation declared

by shippers on shipping notes and

bills of lading of not over 7 cents per lb.

4...5

“ Valued at over 7 cents per lb. will be rated

as 'fancy' or 'toilet.'

Soapstone, Crude

4...10

+ “ Slabs and Manuf'd Articles, O.R.

1

+ “ Dust

4

Soda, Bi-Carbonate, in boxes, kegs or barrels

3...5

“ Ash or Sal Soda, in boxes, barrels or casks

4...5

“ Acetate of

3...5

“ Caustic, in iron drums

4...5

* “ Hyposulphite of, in kegs or bbls

3...5

“ Nitrate of, in iron drums

3...5

“ Nitrate of, in bags or bbls

3...5

“ Salt Cake, in casks

4...10

“ Silicate, in glass

1

“ “ in wood

4...5

“ Water.—See Mineral Water.

“ Pearline and other Washing Powders.—

See Washing Compounds.

Solder, in packages

2

Spark Arresters

D1

Spars.—Taken by special contract only.

Spelter

3...5

S--Continued.

L.C.L. C.L.

*Spices—Cassia, Cloves, Cinnamon, Pepper, All-spice, Nutmegs, Pimento, etc.	1....3
Spice Meal.....	2
*Spindles (Wood or Iron), boxed	3....5
Spinning Wheels.....	1
“ “ Heads.....	D1
Spirits.—See Liquors.	
†Spirits of Turpentine, in barrels, or in cans securely boxed, O.R. of leakage.....	3....5
+ “ in tank cars, O.R. of leakage5
†This freight not to be taken for shipment by water.	
Spoke Drivers.....	1½
*Sponges, boxed.....	D1
Spools, in crates	2....5
“ in cases	3....5
“ in bulk7
“ Paper—iron or wood, empty.....	2....5
Springs, with Axles attached, wheels off.....	1½
“ Rubber, Steel, Volute, Spiral.—See Railway Equipment, etc.	
“ Carriage, Waggon and Seat.....	2....5
“ Wire coiled in bundles.....	D1
“ Wire, in boxes, barrels or casks.....	1....4
* “ Wire Twist, for Mattresses.—See Wire.	
Stamped Ware, nested in crates, boxes or bbls.	3....5
Stamped Ware of Tin or Sheet Iron to be entitled to rate as such should be nested solid: that is, when the outside and bottom surfaces rest against the inside and bottom of the article below, without any intervening space between the outside and inside surfaces, and will exclude articles with ears, handles, spouts, etc., attached, which nest, but not solid as above described.	
Starch, in sacks, boxes, bbls., or casks.....	3....5
Stationery, in trunks.....	1½....4
“ in boxes.....	1....4
Statuary.—See Sculpture.	
*Steam Gauges, with or without glass tubes, bxd.	1
Steam Jacket Heaters	2....4
Steam Jacket Kettles	1....4
Steam Shovels.—See Machinery.	
Stereoptical Lamps.—See Lamps.	
Stereotype.—See Plate, page 65.	
Stereoscopes, boxed.....	1
Stearine.....	3....5
Steel.—Same as Iron.	
Steel Castings.—See Iron.	
*Stock Food Boilers.—See Boilers.	
Stone, Polished, Carved or Lettered, not boxed,	
NOT TAKEN.	
+ “ Polished, Carved or Lettered, bxd., ppd O.R.	1....5
+* “ Slabs, Blocks, Spires, Polished, not carved or lettered, in boxes, O.R.....	3....5
+ “ Slabs or Blocks, Unwrought.....	4....10
“ Coursing and Dimension	4....10
“ Tiling (Floor).....	4....7
“ Rubble, Cobble and Field.....10

Stones

“

+ “

“

Stones

+Stone

+Stone

+Stone

+Stone

+Stone

+Stone

+Stone

+Stone

+Stone

+Stone

+Stone

+Stone

+Stone

+Stone

+Stone

+Stone

+Stone

+Stone

+Stone

+Stone

+Stone

+Stone

+Stone

+Stone

+Stone

+Stone

+Stone

+Stone

+Stone

+Stone

+Stone

+Stone

+Stone

+Stone

+Stone

+Stone

+Stone

+Stone

+Stone

+Stone

+Stone

+Stone

+Stone

+Stone

+Stone

+Stone

+Stone

+Stone

+Stone

+Stone

+Stone

	Stones, Grind.—See Grindstones.	
1....3	“ Scythe and Whet	3....5
2	+ “ Mill, Finished, O.R.....	2....4
3....5	+ “ “ Rough.....	3....5
1	Stoneware.—See Crockery.	
DI	+ Stoneware, in bulk, O.R.....6
s	+ Stone Wash Tubs, loose, O.R.....	2....4
3....5	+ “ “ nested, crated or boxed, O.R.	3....5
5	+ Stoves, Ranges, and Stove or Range Furniture of	
er.	cast or sheet iron only (not tinware)	
1½	shipped with Stoves or Ranges, O.R.	2....4
DI	+ “ Cremating Stoves and Fire Closets and	
2....5	parts of the same, O.R.....	2....4
3....5	+ “ Sheet Iron Ovens, O.R., K.D.....	1....4
7	+ “ Sheet Iron Ovens, O.R.....	DI 1....4
2....5	+ “ Oil, packed in boxes or crates, O.R....	1
1½	+ “ Gas, O.R.....	2....4
	+ “ Furnaces, K.D., and Furnace Castings	2....4
	+ “ Furnaces, O.R.....	2....4
2....5	+ “ Plate Warmers or Steam Tables, O.R.,	
DI	crated or boxed.....	1....4
1....4	+ “ Same, with Steam or Hot Water Pipes &	
3....5	Fittings, complete, O.R., crtd. or bxd.	2....4
	+ “ Portable Steel Ovens, set up, O.R.....	1....4
	+ “ Hot Water Heaters.—Same as Furnaces.	
	+ “ Stove and Furnace Castings, O.R.	
	breakage, under 100 lbs. each.....	2....4
	+ “ Same, 100 lbs. per piece or over, O.R....	3....5
	+ Stove Boards, loose, O.R.....	1....6
	+ “ “ racked, O.R.....	2....5
3....5	“ Brick or Lining.—See Fire Brick.	
1½....4	+ “ Ovens, Portable, K.D.....	2....4
1....4	+ “ Plates, O.R.....	2
	+ “ “ boxed or crated.....	3....5
1	+ “ Pipes—Corrugated or other, loose or in	
2....4	bundles, O.R., released.....	4-1....5
1....4	“ Pipes, in crates or boxes, O.R. and released, DI	1....5
	“ Pipes, not jointed, nested and crated....	3-1....5
	“ “ manufactured in sheets, flat or	
	round, nested, crated or boxed	3....5
	* “ Stovepipe Drums.—Same as Stovepipes.	
	* “ or Furnace Pipes, with Deflector Castings	
	attached.....	1....5
1	+ “ Pipe Elbows, loose, G.R.....	DI 1....5
3....5	* “ “ “ securely put together in rings,	
	crated or wired.....	1....5
	“ “ Iron, manufactured, flat, crated....	2....5
	“ “ Thimbles, stone, cement or asbestos.	2
	* “ “ “ tin or iron.—Same as Stovepipes.	
	* “ Pipe and Stovepipe Elbows, finished, C.L.	
	minimum 20,000 lbs.....5
R. 1....5	+ “ and Furnace Castings, loose or in bdl., O.R	2....4
3....5	+ “ same in boxes, bbls. or casks, O.R.....	3....5
4....10	+ “ Polish.—See Blacking.	
4....10	* Straw, packed in crates	1½....
4....7	“ in pressed bales.—Same as Hay.	
10	* “ Board.—See Paper.	
	“ Goods.—See Millinery.	

L.C.L. C.L.

Tarpaulin
Tartar
Tea—C
“ C
Tea—is
“ in
+ “ in
+ “ in
* “ H
Teasels
+Telegr
tu
Telegr
To
Cr
In
Tents,
Tentp
Terra
“
+Terra
+ “
+ “
+ “
Terra
+Theat
Thimb
Threa
Tickin
Tierce
Ties—
+Tiles,
“
“
Tile M
Timbo

60

Tin	C
"	E
* "	E
* "	E
* "	E
"	T
"	S
"	"
"	S
"	S
"	S
* "	I
* "	T

1	Tarpaulins, green or wet, not taken.	
D1	Tartaric Acid.—Same as Acids Dry.	
	Tea—Condensed, essence or extract in glass, pkd.	1....5
2....4	“ Condensed, essence or extract in cans, bxd.	3....5
1....4	Tea—in trunks.....	1½
4....7	“ in chests or boxes.....	1....3
	+ “ in tins, not crated, O.R.....	1....3
	+ “ in tins, crated or boxed, O.R.....	1....3
	* “ Boxes, metallic.—Same as Tinware.	
3-1	Teasels.....	D1
2....5	+Telegraph and Telephone Instruments and Fix-	
4....5	tures, O.R.....	1
3....5	Telegraph Supplies, viz.:—	
	Top Pins, side blocks.....	4....7
	“ Cross Arms, in bundles.....	4....7
	Insulators in barrels or boxes.....	3....5
	Tents, Awnings and Fixtures.....	1
3....5	Tentpoles, in bundles.....	2
	Terra Alba Clay, in boxes.....	3....7
2....5	“ “ “ in bbls. or casks.....	4....7
3....5	+Terra Cotta, O. R.....	1
3....5	+ “ “ Architectural, for building pur-	
2....5	poses, O. R.....	2....4
3....5	Terra Japonica.—Same as Japonica.	
3....5	+Theatrical Scenery, O.R.....	D1....4
....6	Thimble Skeins—See Iron.	
	Thread, in boxes.....	1
4....7	Ticking—Same as Cottons, Domestic.	
1	Tierces, Empty—See Empties.	
3....5	Ties—See Lumber.	
1....4	+Tiles, Drain or Sewer, O.R.....	4....10
3....5	“ Encaustic or enamelled, glazed or un-	
2....4	glazed, for floors, etc.....	3....5
3....5	“ Roofing.....	3....7
1	Tile Machines—Same as Brick Machines.	
	Timber and Logs, under 28 feet long—Same as	
	Lumber.	
	“ Mast and Spars, requiring two or more	
	cars for carriage—when authorized	
	to be taken, will be one-third more	
	than 10th class rates. (See Rule 1.)	
	Tin Crystals, in boxes or barrels.....	1....3
4....7	“ Foil, in boxes.....	2....4
	* “ Pig, Bar or Slab.....	3....5
1	* “ Plate or Sheet.....	3....5
2	* “ Pipe.—Same as Galvanized Iron Pipe. (See	
3....5	Iron.)	
	“ Troughs—Same as Eavetroughs.	
	“ Scrap, in packages.....	4....5
	“ “ or bulk.....10
3....5	“ Sheet, Japanned, boxed.....	3....5
2....5	“ Signs, boxed.....	3....5
	“ Straps, Fasteners or Buttons, for Roofing,	
3....5	in boxes or barrels.....	3....5
3....5	* “ Butter Pails or cans, three or four smaller	
4....7	cans nested inside larger pail or can,	
3....5	crated or boxed.....	2
2	* “ Tops and bottoms (cartons), crated or boxed	2

T—Continued.

L.C.L. C.L.

+Tinware, loose, O.R.....	D1....6
+ “ nested, N.O.S., O.R.....	1½...4
+ “ in crates, O.R.....	1½...4
* “ N.O.S., in boxes or barrels.....	1....4
* “ Butter Pails or Cans, three or four smaller cans nested inside larger pail or can, crtd. or bxd.	2
* “ Tops and Bottoms (Cartons), crated or boxed.....	
“ Cans (not exceeding one fluid quart in capacity), packed in cases.....	2....5
“ nested, solid, no other goods in same package, in crates, boxes, or bbls..	3....5
+ Oil Cans, loose, O.R.....	D1
+ “ “ in bbls. O.R.....	1½
+ “ “ in woodboard jackets round the body, loose, O.R.	1½
+ “ “ “ in wooden jackets or boxes....	1....5
* “ “ “ crated or boxed.....	1
* “ Sap Pails, nested solid, wired in bundles	3....5
* “ All kinds, C. L. minimum 20,000 lbs....	
Tobacco, Unmanufactured, in covered bales...	1....5
* “ “ in uncovered bales.	1....5
* “ “ in hogsheads and cases (C.L. minimum 20,000 lbs.)	3....5
“ Cut, in pails, loose or tied together....	D1....4
“ “ “ two or more strapped to- gether with metal or wood	1....4
“ “ in boxes or barrels.....	1....5
“ “ repacked in cases.....	2....5
“ Cuttings.....	3....5
“ Plug, in caddies, loose or tied together	D1....4
“ “ “ two or three strapped together with metal or wood, or firmly tied together with cord of not less than ½ inch diameter.....	1
“ Plug, in caddies, four or more strapped together with metal or wood, or firmly tied together with cord of not less than ½ inch diameter, or sewn tightly together in canvas...	3....5
“ “ in boxes or barrels.....	3....5
“ “ in caddies, crated.....	3....5
“ in skins.....	2....4
“ Steins in cases, bbls. or hogsheads....	3....5
*Toboggans, loose (C.L. minimum 20,000 lbs.)...	3-1....8
* “ tied in bundles (C.L. min.20,000 lbs.)	D1....6
Tooth Picks, in boxes.....	1
Top Pins.—See Telegraph Supplies.	
+Tow, in boxes, O.R.....	2
* “ pressed in bales (C.L. minimum 20,000 lbs.)	3....5
“ Waste (for Paper Stock).—Same as Cotton Waste.	
Traps, Animal or Bird, flat, in bundles.....	1....4
“ Fly, in boxes.....	D1
“ “ nested and boxed.....	1
“ Game, in boxes or bbls.....	2....4

See Cir No 4

Traps,

“

“

+Toys,

+ “

+Trays,

Trees

Tricy

Tripe

Tripe

+Trun

* “

“

“

“

“

“

“

“

+Tubi

+ “

+ “

+Tubs

+Turn

* “

Turn

Turn

Turn

Twin

Type

+Type

Umb

+Vali

+ “

+ “

+ “

+ “

+ “

+Var

+ “

+ “

+Vas

“

“

Vat

C.L. C.L.

D1...6
1½...4
1½...4
1...4

2

2...5

3...5

D1
1½

1½

1...5

1

3...5

1...5

1...5

3...5

D1...4

1...4

1...5

2...5

3...5

D1...4

1

1

1

1

3...5

3...5

3...5

2...4

3...5

3-1...8

D1...6

1

2

3...5

1

1...4

D1

1

2...4

T—Continued. U V

L.C.L. C.L.

Traps, Mouse or Rat, in bundles..... 1½...4
“ “ “ in crates or boxes 1...4“ Steam, loose 1
“ “ crated or boxed..... 2

+Toys, loose or in bundles, O.R..... 4-1

+ “ in trunks or crates, O.R..... D1

+ “ in boxes, O.R..... 1

Trays, in racks or cases 1

Trees.—See Shrubby.

Tricycles.—See Bicycles.

Tripe, salted or pickled 3...5

Tripoli 2

+Trunks, empty or filled with Valises and
Satchels, O.R. 1½* “ C.L. common cars 35 feet long or under,
minimum 14,000 lbs 3“ Furniture or hay cars, or racked plat-
form cars, min. weight 20,000 lbs. 3Trunks containing wearing apparel and per-
sonal effects will not be taken as freight
unless with shipment of household goods.When they are offered for shipment,
Agents will refer parties to Express Cos.

+Tubing, Cement, for wells, O.R. 3...5

+ “ Brass or Porcelain Lined, O.R. 3...5

+ “ Wooden, for wells or pumps 3...5

Tubs, in nests.—See Woodenware.

*Turneric, Powdered, in boxes... 1...3

* “ Root, in bbls. or bales 2...4

Turned Stuff.—See Joiners' Work.

Turnips.—See Vegetables.

Turpentine.—See Spirits of Turpentine.

Twine.—See Cordage.

Type, in boxes 2...5

+Typewriting Machines or Caligraphs, boxed or
crated, O.R. released .. 1

U

Umbrellas, in boxes 1

V

+Valises, loose, O.R..... D1

+ “ in trunks, O.R. 1½

* “ C.L. common cars, 35 ft. long or under,
minimum 14,000 lbs. per car 3“ Furniture cars or racked platform cars,
minimum 20,000 lbs. per car 3

“ in cases 1...4

+Varnish, in cans when boxed, O.R..... 1

+ “ in wood, O.R. of leakage..... 2...4

+ This freight must not be taken for ship-
ment by water.

+Vaseline, in glass, O.R..... 1

“ in cans, boxed 2

“ in barrels 3

Vats, Empty.—Same as Cheese Vats.

V—Continued.

L.C.L. C.L.

Vegetables, Evaporated.—Same as Fruits (Apples) Evaporated.		
†* “	Green, O.R. prepaid—Beans, Beets, Cabbages, Carrots, Cauliflowers, Cucumbers, Celery, Onions, Parsnips, Peas, Turnips and Tomatoes, in bags or crates.....	1
“	“ in boxes or barrels.....	3
“	“ in packages or bulk.....8
“	“ not otherwise specified.....	1....8
†* “	Winter Onions in sacks or bags, O.R., prepaid	3....8
“	Turnips (winter).—Same as Common Potatoes.	
†VEHICLES—At O.R. of chafing and breakage in each case, and subject to Note at foot of this article:—		
Ale and Beer Delivery Waggons.—Same as Express and Peddlers' Waggons.		
*Ambulances, set up.—Same as Hearses.		
* “	K.D., crated or boxed (except shafts or poles), in box cars.....	1½
*Automobiles (Horseless Carriages), set up, minimum 5,000 lbs. each.....		1
* “	Taken apart (wheels detached), in box cars	3-1
*Larries, or Lorries, set up, 5,000 lbs. each.....		1
* “	K. D.—Wheels, Shafts and Poles separate, actual weight.....	1
	Omnibuses, Stage Coaches, 5,000 lbs. each	1
	Hearses, Waggons and Sleighs, extra large, 5,000 lbs. each.....	1
“	Children's, 4,000 lbs. each.....	1
	2-Horse Buggies, Carriages, Hacks, Sleighs, Waggons, Express and Peddlers' Waggons, 3,000 lbs. each.....	1
	1-Horse Buggy, Carriage or Waggon, with Covered Top, 3,000 lbs. each	1
	1-Horse Carriage, Buggy, Chaise, Waggon, Express or Peddlers' Waggon, Cab, Gig, Phaeton, or Sleigh, 2,000 lbs. each.....	1
	1-Horse Cariole, Calache or Cutter, 1,000 lbs. each	1
	1-Horse Carts, 2 Wheels, 1,000 lbs. each.....	1
	1-Horse—dump, coal or contractors, K.D.....	1
	1-Horse Sulkies, set up, 800 lbs. each	1
	Sulkies (Cutter), 800 lbs. each.....	1
	Sulkies and Road Carts, K.D., crated or boxed.....	D1
	Sulkies and Road Carts, Wheels off, not crated or boxed, finished.....	D1
“	same, unfinished, in white.....	1½
“	and Road Carts, wheels, shafts, whiffletrees and baskets off and shipped in separate pieces.....	1½

VEHICLES—Continued:—

Sleighs or Sleds, common carters', without bodies or stakes, or bodies and stakes, K.D. and bundled, shafts or poles off.....		D1
Sleigh and Cutter Bodies, in white, crated		D1
Democrat Waggon, 2-horse, set up, 3,000 lbs....	1	
“ “ 1-horse, set up, 2,000 lbs....	1	
“ “ K.D., when loaded in box cars—		
2-Seated-1,200 lbs. each....	1	
3-Seated-1,500 lbs. each....	1	
Lumber Waggon, Common, set up, 2,400 lbs. each	1	
“ “ K.D., wheels, axles, reaches and poles separate, actual weight.....	1	
“ “ Carts and Sleighs; mini- mum 20,000 lbs.	6	
Farmers' Waggon, 1-horse, set up, 2,000 lbs. each.	1	
“ “ 2-horse, set up, 2,400 lbs. each.	1	
“ “ K.D., wheels, axles, reach- es or poles separate, actual weight.....	1	
“ “ (min. 20,000 lbs.)	6	
* (Farmers' Waggon, Lumber Waggon, Carts and Sleighs, in box cars 35 feet long or un- der, may be taken at min. 16,000 lbs. 4th class—same as other vehicles—in cases where 16,000 lbs. or over at 4th class would be charged less than 20,000 lbs. at 6th class.)		
Buck-board Buggies, set up, 1,000 lbs. each....	1	
“ “ K.D. and crated, wheels, shafts, etc., removed and shipped separately, actual weight.....	D1	
Baggage Trucks or Barrows, set up.....	1½	
“ “ K.D.	1	
Bob Sleds, set up, actual weight.....	1½	
“ “ K.D., in pieces	1	
Buggies, Carriages, Cutters and Sleighs, crated (wheels, shafts and poles taken off)	D1	
Buggies, Carriages, Cutters and Sleighs (wheels, shafts and poles taken off), all completely and closely boxed	D1	
Buggies, Carriages or Sleighs, tops up, crated or boxed (wheels, poles and shafts off), and all shipped together	3-1	
Buggy, Carriage and Sleigh Tops (shipped separately), set up, boxed or crated	3-1	
Buggy, Carriage and Sleigh Tops (shipped separ- ately), K.D. flat, canvassed, crated or boxed.	1½	
Buggy Bodies, in white, crated	D1	
Buggy, Cutter and Sleigh Bodies, unfinished, in white, closely boxed	1	
Hose Carts or Reels, 1,500 lbs. each	1	
* “ “ K.D., actual weight	1	
Hook and Ladder Waggon, 5,000 lbs. each	1	

VEHICLES—Continued:—

Waggon or Carts, Tank or Sprinkling, K.D., and loaded in box cars.....	1
Wagon Boxes, ends off, K.D., flat.....	1½
Warehouse Trucks or Barrows, set up.....	1
“ “ “ K.D.	1
* “ Basket Trucks, not nested	3-1
* “ “ “ nested, in bundles..	D1
Wheelbarrows, set up, wood or iron.....	1
“ K.D. and nested.....	3
“ common in white, wheels off, trays nested (C.L. minimum 20,000 lbs.)	3....6
NOTE.—The classification as above, at actual weight, applies to the complete Vehicle or Vehicles, including wheels, shafts, poles, running gear, etc. When finished Vehicles are shipped without the wheels, running gear, etc., they will be charged fifty per cent. over the rates applying to complete Vehicles.	
* NOTE.—Above estimated weights are the min- imum for each Vehicle (actual weight to be charged if greater) and are for Vehicles not too large to be loaded in an ordinary box car. Any single Vehicle too large to go in an ordi- nary box car, and necessitating a platform car for carriage, will not be taken at less than 5,000 lbs.	
Children's Carriages, set up, loose.....	4-1
“ “ set up, crated or boxed... 3-1	
“ “ handles, wheels, etc., de- tached and tied together, canvassed	3-1
“ “ K.D. and crated.....	D1
“ “ K.D. and boxed	1
* “ Bicycles and Tricycles.—See Bicycles.	
“ Sleigh or Sled Runners (Iron).....	2
“ Carriage Wheels and Handles, in bundles or crates	1
“ Carriage Bodies, Wicker or Willow, nested	D1
“ Sleds or Sleighs, set up, loose or in blds..	D1
“ Sleds or Sleighs, crated or boxed ..	1
“ Express Waggon, set up.....	D1
“ Express Waggon, nested and rack- ed, wheels separate.....	1½
“ Express Waggon, K.D. and bxd or rkd ..	1
+* Vehicles, all kinds, C.L. unless otherwise speci- fied, common cars 35 feet long or under, minimum 16,000 lbs.	4
+ “ all kinds, on platform cars, not racked. Same conditions C.L. as in box cars.	
+ “ all kinds, in furniture or hay cars, or racked platform cars, min. 20,000 lbs.	4
Velocipedes—Bicycles and Tricycles.—See Bi- cycles, etc., page 16	
Veneering, Foreign, in boxes	1....3

Veneer, Native, in bundles	2....5
“ “ in crates or boxes	3....5
“ “ one-eighth inch thick or under to be rated as “Veneer;” over one-eighth inch thick as “Lumber.”	
*Veneered, built up or combined woods, in bbls.	2....5
* Same, in crates or boxes	3....5
†Venison, prepaid, O.R.	1....4
Ventilators.—See Iron.	
Vermicelli, in boxes	2....4
*Vinegar, in demijohns	D1....3
†*Vinegar, in demijohns, boxed, O.R.	1....3
Vinegar, not otherwise specified.—Same as Ale.	
Vinegar Shavings, in bales	2....5
Vitriol, Blue.—See Blue Stone.	
Vitriol, Oil of.—Same as Acids.	

W

Wadding, in bales or cases	1
Wads, Gun	2....3
Warp, in bundles or bags	1
“ in boxes, or pressed in bales	2....4
“ Beams, Empty, not boxed	D1
“ “ boxed	1
† “ “ Wrapped with Warp, O.R.	1....4
“ “ Empty, returned from original consignee to original shipper.—Same as returned empties.	
*Washboards, zinc and wood, in bbls. or crated..	2....5
†* “ wood and glass or earthenware combined, in bundles, O.R.	1....5
* “ Same, crated or boxed	2....5
Washers, Steam	1
Washing Compounds, N.O.S. liquid, in glass, pkd	2....5
“ “ in wood	3....5
“ “ dry, in glass, packed ...	2....5
“ “ dry, in wood	3....5
†Washing and Wringing Machines, Hand, set up, not boxed, O.R.	1½....5
“ “ “ boxed or crated	2....5
† “ “ K.D., crated or slatted, O.R.	2....5
Water Closets, iron, loose	1....5
“ “ “ in crates, boxes or bbls.	3....5
“ “ “ Porcelain lined. Same as Water Closets. iron.	
Water Closet Hoppers and Fixtures, iron, loose	1....5
“ “ “ in crates, boxes or bbls ...	3....5

L.C.L. C.L.

[illegible]

WIRE—Continued:—

1....5	+	Wire Cloth, in rolls, O. R.....	2... 5
2....5	+	“ “ in crates, boxes or casks, O. R.....	3...5
D1....5	+	“ “ Clothes Lines.....	3...5
1....5	+	“ “ Common, in coil or in bbls., O.R. of wet and rust.....	4...5
1....5	++	“ “ Coppered, galvanized, tinned or steeled, in coils, bundles or bbls, O.R. wet and rust.....	4...5
2....5	+	“ “ Fencing, N.O.S., O.R.....	1...5
1½...5	+	“ “ Flower Pot Stands, S.U., O.R.....	3-1
2....5	+	“ “ “ “ nested, crated or boxed D1 for Fencing—Cut in lengths and tied in bundles.....	3...5
1	*	“ “ Guards for Vapor, etc., baths, flat, in crates or boxes.....	1
1	++	“ “ Insulated or covered, O.R.....	2...4
1	+	“ “ Keys for opening bottles or cans, in boxes or barrels.....	3...5
2	+	“ “ Lath, in bundles, boxed or crated.....	3...5
2	+	“ “ Mattresses.—See Furniture.	
D1	+	“ “ Netting or Fencing, rolled in bundles (min. C.L. 20,000 lbs.).....	3...5
3....5	+	“ “ Netting, in sheets.....	3...5
1....4	+	“ “ Pant Stretchers, in bundles.....	1½
2....4	+	“ “ “ “ in crates or boxes.....	1
1½...6	+	“ “ Picket Fencing (with wooden pickets).....	2...5
1....6	+	“ “ “ “ (with iron pickets).....	3...5
2...6	+	“ “ Rat or Mouse Traps.—See Traps.	
1	*	“ “ Rods, in coil, unfinished, not drawn through a die.....	4...5
3-1	+	“ “ Screens, Door or Window, in bundles, crates or boxes, O.R.....	1...4
1	+	“ “ Staples, Clamps, Stretchers, Crimpers, Fence Guards and Stops, shipped with wire for fence construction only.—Same rate as the wire.	
1	*	“ “ Truss, Fence, in coil or on wooden spools. Same as Barb and Fence Wire.	3...5
2	*	“ “ Rope or Cable, in coil.....	3...5
3....7	*	“ “ Truss Hooping, in coil.....	3...5
4...10	*	“ “ Twisted Spring—in lengths for Mattresses—in boxes or bbls.....	3...5
4-1	+	“ “ Woven Door Mats, in bbls., crates or cases.....	2...4
1	+	“ “ Work, not otherwise specified.....	D1
ed 4-1	+	Wood Board.—See Paper.	
1....4	+	“ “ Cuts, in boxes, O.R.....	1
3....4	+	“ “ Dishes, oval.....	1...5
2...6	*	“ “ Fibre, chemical.....	3...5
3...6	+	“ “ Preservative, liquid, in wood.....	3...5
4....5	+	“ “ Pulp, wet.....	4...10
1....4	+	“ “ “ “ dry.....	4...5
4....5	*	“ “ “ “ Stones.—Same as Mill Stones.	
2....4	*	“ “ Rollers, solid, with or without iron bound ends.—For moving buildings, logs, etc.	4...10
4....5	+	“ “ Spirits or Alcohol.—Same as Liquors.	
1....4	+	“ “ Turned.—See Joiners' Work.	
	*	Wooden Plugs, for paper rolls or spools.....	4...10

W—Continued. Y Z		L.L.C. C.L.
Woodenware, Buckets, Pails and Tubs, nested.	1	
“ Buckets, crated	2	
“ Butter Plates, nested and crated	2	
“ Small Pails for Oysters, Candy, etc., nested, crated or boxed	1	
“ Bowls, nested, crated or boxed	2	
“ Wooden or Fibre Buckets or Tubs, nested	1	
“ Pickle Cans or Tubs, crated or boxed ...	1	
“ not otherwise specified	1	
* “ all kinds, minimum 20,000 lbs.	5	
Wool, Domestic, in sacks (min. C.L. 10,000 lbs.)	2	1....
“ Compressed, in bales (min. C.L. 20,000 lbs.)	5	3....
“ Waste.—Same as Cotton Waste.		
Woollen Goods	1	
Woollen Mill Clippings or Sweepings, in bags, sacks or crates	5	2....
“ pressed, in bales	5	3....
Wringing Machines.—See Washing Machines.		

Y

Yarn, in bundles or bags	1	
“ in boxes or pressed in bales	4	2....
Yeast, liquid, in kegs or barrels	1	
“ Powder or Cakes, in boxes or barrels	4	2....

Z

Zinc, in Sheet or Rolls, in bundles	5	2....
“ “ “ in casks	5	3....
“ in Slabs or Pigs	5	3....
* “ Pipe.—See Iron.		
“ Scrap	10	4....
“ Ashes or Dross	7	4....
Zincs (Battery), in boxes	5	3....

Table of Acts

Ale, Be

Lage

“

Apples

Barrels

Ale,

“

“

“

“

“

“

“

“

“

“

“

“

“

“

“

“

“

“

“

“

“

“

“

“

“

“

“

“

“

“

“

“

“

“

“

“

“

“

“

“

“

“

“

“

“

“

“

“

“

“

“

“

“

“

“

“

“

“

“

“

“

“

“

“

“

“

L.C. C.L.

Table of Estimated Weights to be used when Actual Weights cannot be ascertained.

	Lbs.
Ale, Beer and Porter, per imperial gallon.....	10.60
“ “ “ per wine “	8.85
Lager Beer, per imperial gallon.....	10.50
“ “ per wine “	8.75
(Weights of barrels to be added.)	
Apples, Green, per bushel.....	56
Barrels, Empty:—	
Ale, Beer and Porter, per butt.....	180
“ “ “ “ hhd.	125
“ “ “ “ bbl	75
“ “ “ “ $\frac{1}{2}$ bbl.....	50
“ “ “ “ $\frac{3}{4}$ bbl.....	35
“ “ “ “ $\frac{1}{4}$ bbl.	20
Lager Beer, per bbl.....	85
“ “ “ $\frac{1}{2}$ bbl	52
“ “ “ $\frac{3}{4}$ bbl	32
“ “ “ $\frac{1}{4}$ bbl.....	20
“ “ “ 1-16 bbl.....	12
Barrels	20
Barrels of Empty Pint Bottles	100
Barrels of Empty Quart Bottles.....	100
“ Cases of Empty Pint Bottles	50
“ Cases of Empty Quart Bottles	55
Brick, Common, each.....	$\frac{1}{2}$
“ Pressed, “	7
“ Fire, “	7
Charcoal, per bushel	22
Clay, per cubic yard	3,000
Coal, Anthracite:—	
Nut, per cubic foot	50
Stove, “ “	53
Egg, “ “	55
Bituminous:—	
Blossburg, per cubic foot.....	53
Cumberland, “ “	53
Pittsburg, “ “	46
Clover Hill, “ “	45
Pictou, “ “	49
Coke, per bushel.....	40
Grain:—	
Barley, per bushel.....	48
Beans, per bbl.....	280
Buckwheat, per bushel.....	48
Corn (shelled), per bushel	56
“ (in ear). “ “	70
Flour, per bbl.....	200
Malt, per bushel	38
Oats, per bushel	34
Oatmeal, per bbl.....	200
Oats, rolled, per bbl.....	200
Peas, per bushel	60
“ (whole), per bbl.	260
“ (split), “	240
Rye, per bushel	56
Wheat, per bushel	60

TABLE OF ESTIMATED WEIGHTS—Continued.

	Lbs.
Gravel, per cubic yard.....	3,500
Ice, per cubic foot.....	57
Lime, per bushel.....	75
Oil, Petroleum, in bulk, in tank cars, per imperial gallon.....	8
Onions, per bushel.....	56
Potatoes, Common, per bbl.	180
“ “ per bushel.....	60
Salt, per bushel.....	60
Sand, per cubic yard.....	3,000
Seed, Blue Grass, per bushel.....	14
“ Clover, “.....	60
“ Flax, “.....	56
“ Hemp, “.....	44
“ Hungarian, “.....	45
“ Millet, “.....	45
“ Timothy, “.....	45
Stone, Cobble, per cord of 128 feet.....	13,000
“ “ per toise of 216 feet.....	22,000
“ Quarried Rubble, Lime Stone, per cubic yard.....	2,000
“ “ Free Stone, per cubic yard.....	1,800
“ Granite, dressed, per cubic foot.....	166
“ Limestone, “ “.....	170
“ Marble, “ “.....	170
“ Sand or Free, “ “.....	150
“ Slate, “ “.....	170
“ Quartz “ “.....	166
Turnips, per bushel.....	56

CORDWOOD.

	Green. Lbs.	Dry. Lbs.
Hickory, per cord of 128 ft.	5,000	4,000
*Ash, Beech, Birch and Maple “ “	4,500	3,750
Poplar, “ “	5,000	3,500
Pine, “ “	3,500	2,500
Hemlock, “ “	4,000	3,000
*Tamarac, “ “	4,500	3,500
Pulpwood (Spruce), “ “	4,800	4,000

“Dry” Cordwood should be cut and piled at least 3 months.

STAVE BOLTS.

	Lbs.
Oak, green, per cord.....	5,300
*Ash and Elm, “ “.....	4,800
Maple, “ “.....	4,500

To ascertain contents of a car of Cordwood or Stave Bolts:—Multiply the length, breadth, and height (in feet) together, and divide by 128.

Thus:—Car 30 ft. long, 3 ft. 6 in. high, 8 ft. wide:—
30 ft. x 3 ft. 6 in. x 8 ft.=840÷128=6.56 cords.

ALLOWANCES IN WEIGHT FOR LININGS AND RACKS.

When computing weights on basis of marked tare, the following deductions should be made from scale weights, when cars are lined or racked:—(for extra tare of car)—

On box cars loaded with perishable property, when lined by shipper, 1,500 lbs.

.....	Lbs.	5,300
.....	Lbs.	4,800
.....	Lbs.	4,500
.....	Lbs.	4,200
.....	Lbs.	3,900
.....	Lbs.	3,600
.....	Lbs.	3,300
.....	Lbs.	3,000
.....	Lbs.	2,700
.....	Lbs.	2,400
.....	Lbs.	2,100
.....	Lbs.	1,800
.....	Lbs.	1,500
.....	Lbs.	1,200
.....	Lbs.	900
.....	Lbs.	600
.....	Lbs.	300
.....	Lbs.	150
.....	Lbs.	75
.....	Lbs.	37.5
.....	Lbs.	18.75
.....	Lbs.	9.375
.....	Lbs.	4.6875
.....	Lbs.	2.34375
.....	Lbs.	1.171875
.....	Lbs.	0.5859375
.....	Lbs.	0.29296875
.....	Lbs.	0.146484375
.....	Lbs.	0.0732421875
.....	Lbs.	0.03662109375
.....	Lbs.	0.018310546875
.....	Lbs.	0.0091552734375
.....	Lbs.	0.00457763671875
.....	Lbs.	0.002288818359375
.....	Lbs.	0.0011444091796875
.....	Lbs.	0.00057220458984375
.....	Lbs.	0.000286102294921875
.....	Lbs.	0.0001430511474609375
.....	Lbs.	0.00007152557373046875
.....	Lbs.	0.000035762786865234375
.....	Lbs.	0.0000178813934326171875
.....	Lbs.	0.00000894069671630859375
.....	Lbs.	0.000004470348358154296875
.....	Lbs.	0.0000022351741790771484375
.....	Lbs.	0.00000111758708953857421875
.....	Lbs.	0.000000558793544769287109375
.....	Lbs.	0.0000002793967723846435546875
.....	Lbs.	0.00000013969838619232177734375
.....	Lbs.	0.000000069849193096160888671875
.....	Lbs.	0.0000000349245965480804443359375
.....	Lbs.	0.00000001746229827404022216796875
.....	Lbs.	0.000000008731149137020111083984375
.....	Lbs.	0.0000000043655745685100555419921875
.....	Lbs.	0.00000000218278728425502777099609375
.....	Lbs.	0.000000001091393642127513885498046875
.....	Lbs.	0.0000000005456968210637569427490234375
.....	Lbs.	0.00000000027284841053187847137451171875
.....	Lbs.	0.000000000136424205265939235687255859375
.....	Lbs.	0.0000000000682121026329696178436279296875
.....	Lbs.	0.00000000003410605131648480892181396484375
.....	Lbs.	0.000000000017053025658242404460906982421875
.....	Lbs.	0.0000000000085265128291212022304534912109375
.....	Lbs.	0.00000000000426325641456060111522674560546875
.....	Lbs.	0.000000000002131628207280300557613372802734375
.....	Lbs.	0.0000000000010658141036401502788066864013671875
.....	Lbs.	0.00000000000053290705182007513940334320068359375
.....	Lbs.	0.000000000000266453525910037569701671600341796875
.....	Lbs.	0.0000000000001332267629550187848508358001708984375
.....	Lbs.	0.00000000000006661338147750939242541790008544921875
.....	Lbs.	0.000000000000033306690738754696212708950042724609375
.....	Lbs.	0.0000000000000166533453693773481063544750213623046875
.....	Lbs.	0.00000000000000832667268468867405317723750106811734375
.....	Lbs.	0.000000000000004163336342344337026588618750534058671875
.....	Lbs.	0.0000000000000020816681711721685132943093750267028359375
.....	Lbs.	0.00000000000000104083408558608425664715468750133514296875
.....	Lbs.	0.000000000000000520417042793042128323577343750066756484375
.....	Lbs.	0.00000000000000026020852139652106416178867187500333782421875
.....	Lbs.	0.0000000000000001301042606982605320808943359375001668912109375
.....	Lbs.	0.00000000000000006505213034913026604044716796875000834456046875
.....	Lbs.	0.0000000000000000325260651745651330202235839843750004172280234375
.....	Lbs.	0.000000000000000016263032587282566510111791992187500020861401171875
.....	Lbs.	0.000000000000000008131516293641283255055895996093750001043070058984375
.....	Lbs.	0.0000000000000000040657581

*Cars loaded with agricultural implements, machinery, vehicles or stoves—the weight of the rack or lumber used, but not more than 1,500 lbs. for platform and 1,000 lbs. for box cars.

No allowances will be made for racks or stakes used on cars loaded with lumber, for grain doors, or for boards in doors of cars loaded with bulk freights.

LUMBER, ETC.	Green Lbs.	Partly Seasoned Lbs.	Dry. Lbs.
White Pine, White Wood, Bass-wood, per 1,000 feet	3,500	3,000	2,700
Butternut, Chestnut, Red Pine, Norway or Yellow Pine, Hemlock, Spruce, Tamarac, per 1,000 feet	4,000	3,500	3,000
Ash, Elm, Maple, Cherry, per 1,000 feet	4,500	4,000	3,500
Oak, Walnut, Hickory, Birch, Beech, per 1,000 feet	5,000	4,500	4,000
Shingles, Pine (18-inch), per 1,000 ..	375	350	325
" " (16-inch), per 1,000 ..	350	325	300
* " Cedar (18-inch), per 1,000 ..	280	245	225
* " " (16-inch), per 1,000 ..	270	235	210
Lath, per 1,000	600	525	450
Bark, per cord	3,500	3,000	2,400
Staves, finished, for Oil, Pork and Beef Barrels, per 1,000	3,750	3,375	3,000
Staves, sawed, unfinished, for Oil, Pork and Beef Barrels, per 1,000 ..	4,375	3,925	3,500
Staves, rough, for Oil, Pork, and Beef Barrels, per 1,000	5,000	4,500	4,000
Staves, manufactured, for Flour Barrels, per 1,000	1,250	1,125	1,000
Cedar Posts, or Bolts, for Block Paving, per cord	3,500	3,000	2,500
Shingle Bolts, per cord	3,500	3,000	2,500
Slabs—Hardwood, per cord	5,000	4,000	3,000
Slabs—Pine, Spruce and Hemlock, per cord	4,000	3,000	2,400
Telegraph Poles, per cord	4,000	3,500	3,000
Ties—Hemlock, Pine, Spruce, Tamarac, each about	160	150	130
Ties—Cedar, Sawn Pine, each about ..	140	120	100
Hoops, Hoop Poles, Hop Poles, per cord	3,500	3,250	3,000

ed tare, the
le weights,
re of car)—
erty, when

Allowances in Track Scale Weights for Lumber,
Bark, Cordwood and other rough forest products:

Platform Cars, Summer.....	1,000 lbs.
	2 000 "

Bark, Cordwood and other rough forest products.....	1,000 lbs.
Platform Cars, Summer.....	2,000 "
" " Winter.....	500 "
Box " Summer.....	1,000 "
" " Winter.....	
Summer period, May 1st to October 31st.	
Winter " Nov. 1st to April 30th.	

TABLE OF ESTIMATED WEIGHTS—Continued.

CEDAR POSTS.

The following quantities of cedar posts, 9 feet long, are estimated to weigh 24,000 lbs.:

28 feet car.....	4 ft. 9 in. high
30 " ".....	4 ft. 6 in. "
32 " ".....	4 ft. 3 in. "
33 " ".....	4 ft. 0 in. "
34 " ".....	3 ft. 10 in. "

GRAIN IN BULK.

* The quantity in a car can be ascertained, with sufficient accuracy, by multiplying the internal length and breadth of the car together, and then by the height of the grain. Multiply this product by 1728 (number of inches in a cubic foot), and divide by 2150 (number of cubic inches in a bushel).

Thus :—Car 27 ft. 6 in. \times 8 ft. 7½ in. \times 2 ft. 1 in. = 494 ft. 1 in. 8 pts. Multiply by 1728, and \div 2150 = 400 nearly.

ROUND TIMBER.

- 1st. When all the sizes are in feet, multiply the length by the SQUARE of one-quarter of the mean girth, and the product will give the volume in cubic feet.
- 2nd. When the length is in feet and the girth is in inches, multiply as above, and divide by 144.
- 3rd. When all the dimensions are in inches, multiply as above, and divide by 1728.

Thus :—50 ft. long—girths 31.5 and 62.9 inches.

$$50 \times \left(\frac{31.5 + 62.9}{2} \div 4 \right)^2 = 50 \times 11.8^2 = 6962, \text{ and } \frac{6962}{144} = 48.347 \text{ feet.}$$

$$50 \times \frac{31.5 + 62.9 + 2^2}{16} \div 144 = \frac{111392}{16} \div 144 = 48.347 \text{ feet.}$$

The mean girth of Round Timber may be obtained by taking the circumference at both ends and in the centre, adding them together and dividing by 3.

The girth of Spars should be arrived at by taking their diameter at one-third of their length from the abut or large end.

SQUARE TIMBER.

- 1st. When all the dimensions are in feet, multiply the product of the breadth by the depth, by the length, and the product will give the volume in cubic feet.
- 2nd. When one of the dimensions is in inches and the other dimensions are in feet, multiply as above and divide by 12.
- 3rd. When two of the dimensions are in inches, and the other dimension in feet, multiply as above and divide by 144.

Thus : 20 ft. long and 15 in. square :—15 \times 15 \times 20 = 4500, and 4500 \div 144 = 31.25 cubic feet.

The following are found to be average weights of Round and Square Timber :—

White Pine.....	48 lbs. per cubic foot.
Hemlock, Spruce, Red Pine	55 " " "
Ash Elm, Maple, Cherry, Birch,	
Beech	60 " " "
Oak, Hickory	65 " " "

et long,

in. high

in. "

in. "

in. "

in. "

suffici-

length

by the

by 1728

wide by

=494 ft.

nearly.

length

girth,

ic feet.

h is in

t.

tiplied as

= 48.347

et.

ined by

t in the

by 3.

g their

om the

ply the

length,

ic feet.

nd the

above

es, and

above

= 4500,

Round

ic foot.

"

"

"

