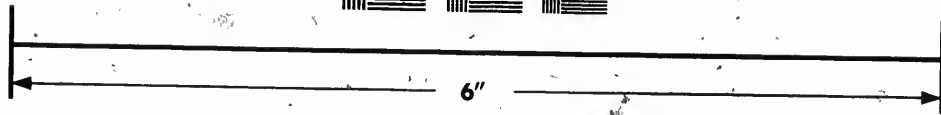
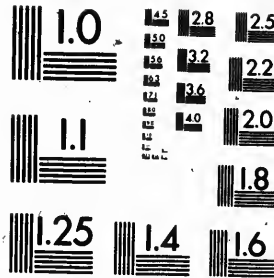
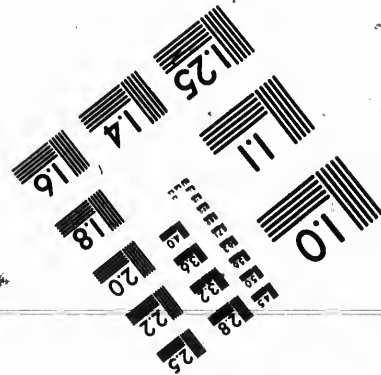
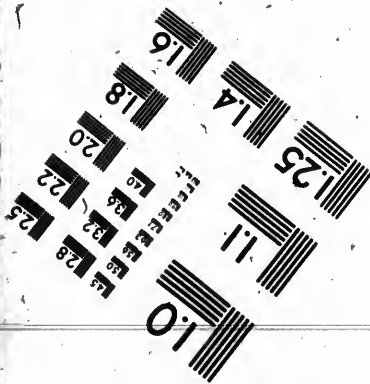


**IMAGE EVALUATION
TEST TARGET (MT-3)**



Canada



**Photographic
Sciences
Corporation**

23 WEST MAIN STREET
WEBSTER, N.Y. 14580
(716) 872-4503

**CIHM
Microfiche
Series
(Monographs)**

**ICMH
Collection de
microfiches
(monographies)**



Canadian Institute for Historical Microreproductions / Institut canadien de microreproductions historiques

© 1992

Technical and Bibliographic Notes / Notes techniques et bibliographiques

The Institute has attempted to obtain the best original copy available for filming. Features of this copy which may be bibliographically unique, which may alter any of the images in the reproduction, or which may significantly change the usual method of filming, are checked below.

L'Institut a microfilmé le meilleur exemplaire qu'il lui a été possible de se procurer. Les détails de cet exemplaire qui sont peut-être uniques du point de vue bibliographique, qui peuvent modifier une image reproduite, ou qui peuvent exiger une modification dans la méthode normale de filmage sont indiqués ci-dessous.

- Coloured covers/
Couverture de couleur
- Covers damaged/
Couverture endommagée
- Covers restored and/or laminated/
Couverture restaurée et/ou pelliculée
- Cover title missing/
Le titre de couverture manque
- Coloured maps/
Cartes géographiques en couleur
- Coloured ink (i.e. other than blue or black)/
Encre de couleur (i.e. autre que bleue ou noire)
- Coloured plates and/or illustrations/
Planches et/ou illustrations en couleur
- Bound with other material/
Relié avec d'autres documents
- Tight binding may cause shadows or distortion
along interior margin/
La reliure serrée peut causer de l'ombre ou de la
distorsion le long de la marge intérieure
- Blank leaves added during restoration may appear
within the text. Whenever possible, these have
been omitted from filming/
Il se peut que certaines pages blanches ajoutées
lors d'une restauration apparaissent dans le texte,
mais, lorsque cela était possible, ces pages n'ont
pas été filmées.

- Coloured pages/
Pages de couleur
 - Pages damaged/
Pages endommagées
 - Pages restored and/or laminated/
Pages restaurées et/ou pelliculées
 - Pages discoloured, stained or foxed/
Pages décolorées, tachetées ou piquées
 - Pages detached/
Pages détachées
 - Showthrough/
Transparence
 - Quality of print varies/
Qualité inégale de l'impression
 - Continuous pagination/
Pagination continue
 - Includes index(es)/
Comprend un (des) index
- Title on header taken from:/
Le titre de l'en-tête provient:
- Title page of issue/
Page de titre de la livraison
 - Caption of issue/
Titre de départ de la livraison
 - Masthead/
Générique (périodiques) de la livraison

Additional comments:/
Commentaires supplémentaires:

Docket title page is bound in as last page in book but filmed as first page on fiche.

This item is filmed at the reduction ratio checked below/
Ce document est filmé au taux de réduction indiqué ci-dessous:

10X	12X	14X	16X	18X	20X	22X	24X	26X	28X	30X	32X
<input type="checkbox"/>	<input type="checkbox"/>	<input type="checkbox"/>	<input type="checkbox"/>	<input type="checkbox"/>	<input type="checkbox"/>	<input type="checkbox"/>	<input type="checkbox"/>	<input type="checkbox"/>	<input checked="" type="checkbox"/>	<input type="checkbox"/>	<input type="checkbox"/>

The copy filmed here has been reproduced thanks to the generosity of:

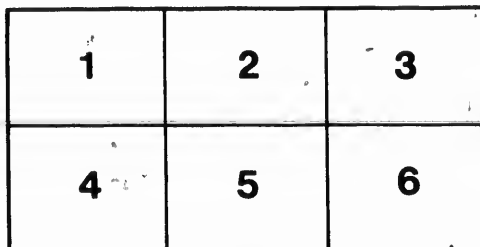
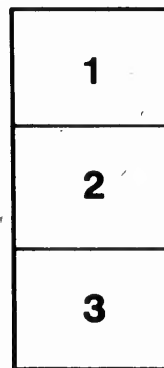
Harold Campbell Vaughan Memorial Library
Acadia University

The images appearing here are the best quality possible considering the condition and legibility of the original copy and in keeping with the filming contract specifications.

Original copies in printed paper covers are filmed beginning with the front cover and ending on the last page with a printed or illustrated impression, or the back cover when appropriate. All other original copies are filmed beginning on the first page with a printed or illustrated impression, and ending on the last page with a printed or illustrated impression.

The last recorded frame on each microfiche shall contain the symbol \rightarrow (meaning "CONTINUED"), or the symbol ∇ (meaning "END"), whichever applies.

Maps, plates, charts, etc., may be filmed at different reduction ratios. Those too large to be entirely included in one exposure are filmed beginning in the upper left hand corner, left to right and top to bottom, as many frames as required. The following diagrams illustrate the method:



L'exemplaire filmé fut reproduit grâce à la générosité de:

Harold Campbell Vaughan Memorial Library
Acadia University

Les images suivantes ont été reproduites avec le plus grand soin, compte tenu de la condition et de la netteté de l'exemplaire filmé, et en conformité avec les conditions du contrat de filmage.

Les exemplaires originaux dont la couverture en papier est imprimée sont filmés en commençant par le premier plat et en terminant soit par la dernière page qui comporte une empreinte d'impression ou d'illustration, soit par le second plat, selon le cas. Tous les autres exemplaires originaux sont filmés en commençant par la première page qui comporte une empreinte d'impression ou d'illustration et en terminant par la dernière page qui comporte une telle empreinte.

Un des symboles suivants apparaîtra sur la dernière image de chaque microfiche, selon le cas: le symbole \rightarrow signifie "A SUIVRE", le symbole ∇ signifie "FIN".

Les cartes, planches, tableaux, etc., peuvent être filmés à des taux de réduction différents. Lorsque le document est trop grand pour être reproduit en un seul cliché, il est filmé à partir de l'angle supérieur gauche, de gauche à droite, et de haut en bas, en prenant le nombre d'images nécessaire. Les diagrammes suivants illustrent la méthode.

VII.

CANADA.

AN ESTIMATE

Of the Sum which will be required in the Year 1838,
for improving the Water Communication between
Montreal and the *Ottawa*, from the *Ottawa* to
Kingston, and from *Lake Erie* to *Lake Ontario*.

Ordered, by The House of Commons, to be Printed,
25 June 1838.

C A N A D A.

AN ESTIMATE

Of the Sum which will be required in the Year 1828, for improving the Water Communication between *Montreal* and the *Ottawa*, from the *Ottawa* to *Kingston*, and from Lake *Eric* to Lake *Ontario*.

One Hundred and Thirty-five Thousand Pounds;
clear of Fees and all other Deductions.

On Account of the *Grenville* Canal, now carrying on by the Royal } £
Staff Corps - - - - - } 15,000

On Account of the *Rideau* Communication between the *Ottawa* }
and *Kingston* - - - - - } 120,000

£. 135,000

Whitehall, Treasury Chambers, }
25th June 1828.

GEO. R. DAWSON.

Ordered, by The House of Commons, to be Printed,
25 June 1828.

2
VII.—ESTIMATE FOR IMPROVING THE

Downing-street,
9th April 1828.

SIR,

I AM directed by Mr. Secretary *Huskisson* to transmit to you an extract of a letter from the Master General of the Ordnance, stating, that by accounts recently received from Lieutenant Colonel By, the officer who is employed in constructing the *Rideau* Canal, it appears that he has entered into very extensive contracts for work to be completed in the present year, and that the Estimate of £.41,000, which has been submitted to Parliament for this Service, would be altogether inadequate to meet the engagements into which Lieutenant Colonel By has entered. Under the circumstances, therefore, which are stated by Lord *Beresford*, Mr. *Huskisson* requests that you will submit to the consideration of the Lords Commissioners of the Treasury, the propriety of applying to Parliament for a grant of £.120,000 on account of the *Rideau* Canal, in the present year; and if their Lordships concur in this opinion, Mr. *Huskisson* will direct a Supplementary Estimate to be prepared for an additional sum of £.79,000 for this service.

I am, &c.

(sig^d) *R. W. Hay.*

G. R. Dawson, Esq.

&c. &c. &c.

Extract of a Letter from Lord BERESFORD to the Right Honourable *William Huskisson*, respecting the *Rideau Canal*; dated 17th March 1828.

“ ADVERTING to that part of your letter which limits the Expenditure on the construction of the *Rideau Canal* to the same amount as was voted by Parliament for the last year, I beg to call your attention to a Report from Lieutenant Colonel By, which has come to me since I received your letter, and which I annex hereto. By this you will see, that Lieutenant Colonel By could not have been made acquainted with the intended limitation of expenditure for this year, in sufficient time to prevent his making the contracts he therein communicates to have been completed. Those contracts having been made, and the contractors in all probability having made their arrangements, and even commenced operations, we can only be liberated from those engagements (I speak of those made 1st February last) by very onerous concessions, which would be a dead loss; and you will see that the contracts formerly made are in full execution, and that on these the expenses from the 1st November 1827 to 22d January 1828 (less than three months) is £. 28,614. 7s. 2d. and these apparently not the best months for working; the expenses on the new contracts must be added to this, when you will see how little way the £. 41,000 you propose this year will go towards defraying the now inevitable expenses, whatever may be determined on, that is, whether you stop those contracts, or go on with them. In short, it is obvious that Lieutenant Colonel By has laid down work for this year that will take about a third of the sum he estimated for the whole, or about £. 140,000 (taking into consideration what has been already expended), as the contracts go to complete the whole in three years from January last.”

