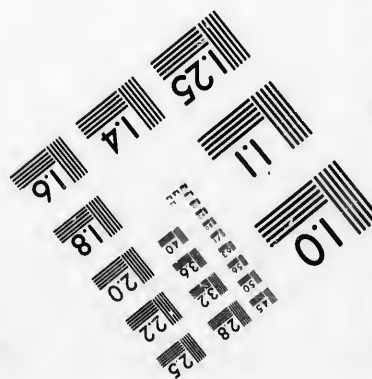
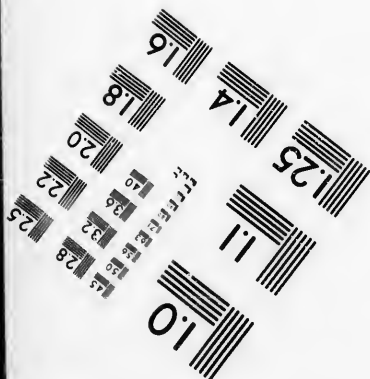
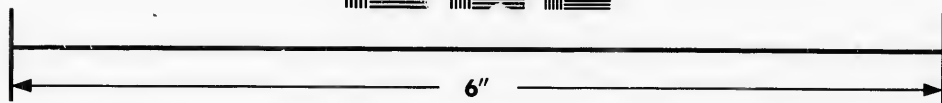
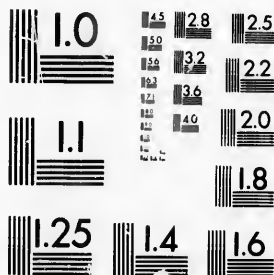


**IMAGE EVALUATION
TEST TARGET (MT-3)**



**Photographic
Sciences
Corporation**

23 WEST MAIN STREET
WEBSTER, N.Y. 14580
(716) 872-4503

1.5 1.8 2.0 2.2 2.5
2.8 3.2 3.6 4.0
4.5 5.0 5.6 6.3 7.1 8.0 9.0 10.0

**CIHM/ICMH
Microfiche
Series.**

**CIHM/ICMH
Collection de
microfiches.**



Canadian Institute for Historical Microreproductions / Institut canadien de microreproductions historiques

10
11
12
13
14
15
16
17
18
19
20
21
22
23
24
25
26
27
28
29
30

© 1986

Technical and Bibliographic Notes/Notes techniques et bibliographiques

The Institute has attempted to obtain the best original copy available for filming. Features of this copy which may be bibliographically unique, which may alter any of the images in the reproduction, or which may significantly change the usual method of filming, are checked below.

L'institut a microfilmé le meilleur exemplaire qu'il lui a été possible de se procurer. Les détails de cet exemplaire qui sont peut-être uniques du point de vue bibliographique, qui peuvent modifier une image reproduite, ou qui peuvent exiger une modification dans la méthode normale de filmage sont indiqués ci-dessous.

- Coloured covers/
Couverture de couleur
- Covers damaged/
Couverture endommagée
- Covers restored and/or laminated/
Couverture restaurée et/ou pelliculée
- Cover title missing/
Le titre de couverture manque
- Coloured maps/
Cartes géographiques en couleur
- Coloured ink (i.e. other than blue or black)/
Encre de couleur (i.e. autre que bleue ou noire)
- Coloured plates and/or illustrations/
Planches et/ou illustrations en couleur
- Bound with other material/
Relié avec d'autres documents
- Tight binding may cause shadows or distortion along interior margin/
La reliure serrée peut causer de l'ombre ou de la distorsion le long de la marge intérieure
- Blank leaves added during restoration may appear within the text. Whenever possible, these have been omitted from filming/
Il se peut que certaines pages blanches ajoutées lors d'une restauration apparaissent dans le texte, mais, lorsque cela était possible, ces pages n'ont pas été filmées.
- Additional comments:
Commentaires supplémentaires:

- Coloured pages/
Pages de couleur
- Pages damaged/
Pages endommagées
- Pages restored and/or laminated/
Pages restaurées et/ou pelliculées
- Pages discoloured, stained or foxed/
Pages décolorées, tachetées ou piquées
- Pages detached/
Pages détachées
- Showthrough/
Transparence
- Quality of print varies/
Qualité inégale de l'impression
- Includes supplementary material/
Comprend du matériel supplémentaire
- Only edition available/
Seule édition disponible
- Pages wholly or partially obscured by errata slips, tissues, etc., have been refilmed to ensure the best possible image/
Les pages totalement ou partiellement obscurcies par un feuillet d'errata, une pelure, etc., ont été filmées à nouveau de façon à obtenir la meilleure image possible.

This item is filmed at the reduction ratio checked below/
Ce document est filmé au taux de réduction indiqué ci-dessous.

10X	14X	18X	22X	26X	30X
<input type="checkbox"/>	<input type="checkbox"/>	<input type="checkbox"/>	<input checked="" type="checkbox"/>	<input type="checkbox"/>	<input type="checkbox"/>
12X	16X	20X	24X	28X	32X

The copy filmed here has been reproduced thanks to the generosity of:

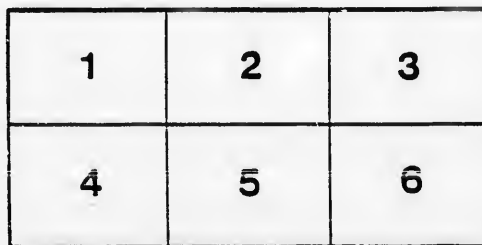
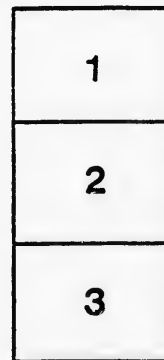
Archives of Ontario
Toronto

The images appearing here are the best quality possible considering the condition and legibility of the original copy and in keeping with the filming contract specifications.

Original copies in printed paper covers are filmed beginning with the front cover and ending on the last page with a printed or illustrated impression, or the back cover when appropriate. All other original copies are filmed beginning on the first page with a printed or illustrated impression, and ending on the last page with a printed or illustrated impression.

The last recorded frame on each microfiche shall contain the symbol \rightarrow (meaning "CONTINUED"), or the symbol ∇ (meaning "END"), whichever applies.

Maps, plates, charts, etc., may be filmed at different reduction ratios. Those too large to be entirely included in one exposure are filmed beginning in the upper left hand corner, left to right and top to bottom, as many frames as required. The following diagrams illustrate the method:



L'exemplaire filmé fut reproduit grâce à la générosité de:

Archives of Ontario
Toronto

Les images suivantes ont été reproduites avec le plus grand soin, compte tenu de la condition et de la netteté de l'exemplaire filmé, et en conformité avec les conditions du contrat de filmage.

Les exemplaires originaux dont la couverture en papier est imprimée sont filmés en commençant par le premier plat et en terminant soit par la dernière page qui comporte une empreinte d'impression ou d'illustration, soit par le second plat, selon le cas. Tous les autres exemplaires originaux sont filmés en commençant par la première page qui comporte une empreinte d'impression ou d'illustration et en terminant par la dernière page qui comporte une telle empreinte.

Un des symboles suivants apparaîtra sur la dernière image de chaque microfiche, selon le cas: le symbole \rightarrow signifie "A SUIVRE", le symbole ∇ signifie "FIN".

Les cartes, planches, tableaux, etc., peuvent être filmés à des taux de réduction différents. Lorsque le document est trop grand pour être reproduit en un seul cliché, il est filmé à partir de l'angle supérieur gauche, de gauche à droite, et de haut en bas, en prenant le nombre d'images nécessaire. Les diagrammes suivants illustrent la méthode.

ails
du
odifier
une
image

rrata
o

belure,
n à

32X

LIST OF VOTERS

—OF THE—

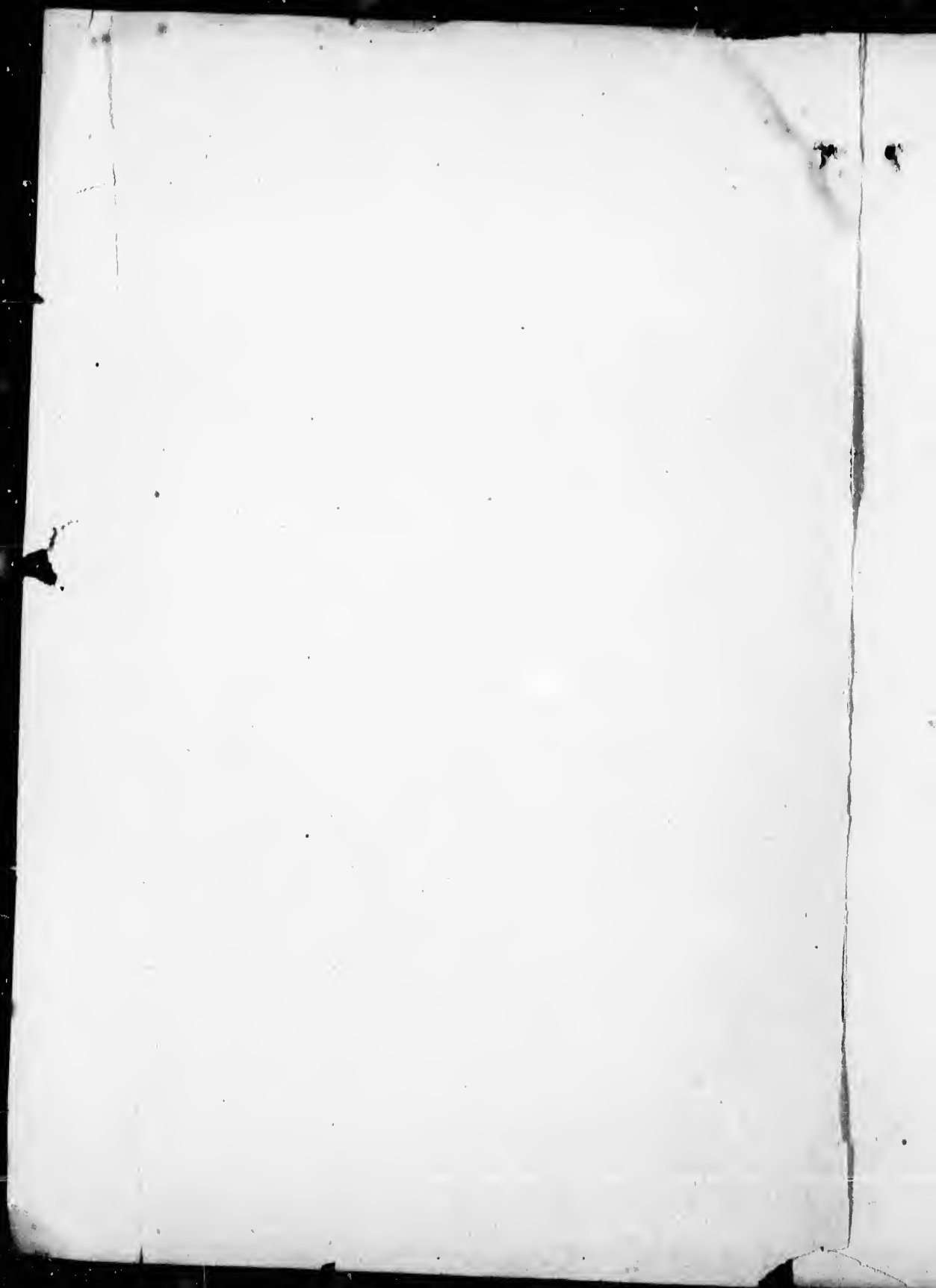
TOWNSHIP OF NORTH WALSINGHAM

FOR THE YEAR 1895.

TO PERSONS TO WHOM VOTERS' LISTS ARE SENT
UNDER SECTION 6, CHAPTER 9, OF THE CON-
SOLIDATED STATUTES OF ONTARIO.

The Sheriff shall, immediately upon the receipt of his copies, cause one of them to be posted up in a conspicuous place in the Court House ; and the Clerk of the Peace, upon the receipt of his copies, shall cause one of them to be posted in a conspicuous place in his office ; and every Public and Separate School Head Master or Mistress shall, in like manner, post up one of his or her copies on the door of the School House ; and every Postmaster shall post up one of his copies in the Post Office.

LIST FIRST POSTED ON THE 25th DAY OF JULY ;
LAST DAY FOR APPEALS, 24th DAY OF AUG.





SCHEDULE OF POST OFFICES.

1. Langton.
2. Carholm.
3. Wyecombe.
4. Marston.
5. Glen Meyer.
6. Walsingham Centre.
7. Tilsonburg.
8. Cultus.
9. Port Rowan.
10. Simcoe.
11. Frogmore.
12. St. Williams.
13. Delhi.
14. South Middleton.
15. Mabee.
16. Waterford.
17. Port Royal.
18. Straffordville.
19. Lynedoch.
20. Glenshee.
21. Silver Hill.
22. Tain.
23. Mount Elgin.
24. Tawas, Mich.
25. St. Louis, Mo.
26. Chicago, Ill.
27. Whitewater.
28. Chippawa.
29. Houghton Centre.
30. Falkland.
31. Kingsville.
32. Alpena, Mich.
33. Townsend Centre.
34. Essex Centre.
35. Hamilton.
36. Aylmer.
37. Sarnia.
38. Buffalo.
39. Nanticoke.
40. Stratford.
41. Springfield.
42. Rowan Mills.
43. Duluth.
44. Port Dover.
45. Embro.
46. Hilman, Mich.
47. Erie View.
48. Fair Ground.
49. Courtland.
50. Brantford.
51. Cleveland, O., U. S.
52. Ayr.
53. Cornell.

VOTERS' LIST, 1895.

Municipality of the Township of North Walsingham, County of Norfolk.

POLLING SUB-DIVISION NO. 1.

Comprising Lots 1, 2, 3, 4, 5, 6, 7, 8, 9, 10, in Concessions 7, 8, 9, 10.

PART I.—List of persons entitled to vote at both Municipal Elections and Elections to the Legislative Assembly.

No. on Roll.	Name.	Juror.	Lot.	Con.	Qualificat'n	P. O.
8	Armstrong, John	J	10	10	F M F	1
11	Armstrong, James	J	10	10	F M F	1
13	Anger, Frederick Wm.	J	6	10	F M F	4
24	Abbott, Chalmers	J	2	9	T M F	4
25	Abbott, Clarence	J	2	9	T M F	4
26	Abbott, Leslie	J	2	9	T M F	4
27	Abbott, Isaac	J	2	9	F M F	4
47	Bennett, Jas. W.	J	8	8	F M F	6
48	Ball, Thomas		2	8	F M F	8
58	Blundell, Wm.	J	2	10	F M F	11
59	Bouck, John W.	J	9	8	F M F	1
64	Bronson, Freeman	J	6	10	F M F	4
65	Bronson, George	J	6	10	F M F	4
66	Bowman, Wm.	J	1	10	F M F	4
67	Bunker, Robert	J	4	10	F M F	4
104	Brale, Chas.	J	3	9	F M F	4
105	Brale, Frederick	J	3	9	F M F	4
106	Brale, John		3	9	F M F	4
116	Burger, Stephen	J	5	8	F M F	4
117	Brayley, James	J	3	8	F M F	4

TOWNSHIP OF NORTH WALSINGHAM

No. on Roll.	Name.	Juror.	Lot.	Con.	Qualificat'n	P. O.
122	Brown, Elias		3	7	T M F	8
120	Cronkrite, William		3	7	F M F	8
121	Cronkrite, Lorenzo		3	7	F M F	8
123	Cole, Henry		7	7	F M F	6
140	Connor, Samuel	J	5	7	F M F	6
158	Clark, William	J	7	10	F M F	1
159	Cridland, George	J	6	10	F M F	4
165	Campbell, Wm. H.	J	5	10	F M F	4
166	Cridland, Edwin	J	4	9	F M F	4
197	Clark, Alexander	J	5	8	T M F	4
198	Clark, Thomas	J	5	8	T M F	4
199	Conklin, James	J	10	8	T M F	1
531	Collings, George		4	9	T M F	4
200	Drake, James	J	2	7	F M F	8
201	Drake, James D.	J	2	7	F M F	8
202	Drake, George	J	2	7	F M F	8
203	Drake, Francis		1	7	F M F	8
204	Dair, Joseph		6	7	F M F	6
205	Dair, John		8	7	F M F	6
212	Davis, John H.		7	9	F M F	4

LIST OF VOTERS.

No. on Roll.	Name.	Juror.	Lot.	Con.	Qualificat'n	P. O.
229	Elvidge, Henry		1	7	F M F	8
230	Elvidge, Henry, Jr.	J	1	7	F M F	8
231	Elvidge, Joseph		4	7	F M F	8
234	Ecker, Robert	J	7	9	F M F	4
243	Foster, William		7	7	T M F	6
249	Fick, Harvey	J	8	10	F M F	1
250	Fick, Peter A.	J	7	10	F M F	1
251	Fick, Christian		4	10	F M F	1
252	Fick, George		4	10	F M F	1
272	Fick, Isaac		1	9	F M F	4
281	Gee, William		3	7	F M F	8
292	Girvin, John A.		5	9	F M F	4
308	Hendeshott, Philip		2	7	F M F	8
309	Hendershott, David		2	7	F M F	8
310	Hazen, George N.	J	5	7	F M F	6
311	Hitchcock, John		7	7	F M F	6
312	Hitchcock, Henry		7	7	T M F	6
324	Hepburn, Frederick	J	9	8	F M F	6
332	Hutchinson, Wm.	J	4	8	F M F	4
361	House, John S.		1	10	F M F	49
362	House, James C.		1	10	F M F	5

TOWNSHIP OF NORTH WALSINGHAM 5

No. on Roll.	Name.	Juror.	Lot.	Con.	Qualificat'n	P. O.
364	Jemerson, Whitson	J	10	7	F M F	6
383	Kriss, George		9	7	F M F	6
396	Long, Jas. W.		3	7	F M F	8
397	Long, James L.		3	7	F M F	8
398	Long, Edward		3	7	F M F	8
399	Leforge, William		6	7	F M F	6
400	Le W. Robt.		7	7	F M F	6
407	Leighfield, George	J	6	9	F M F	4
418	Leighfield, Chas.	J	5	7	F M F	4
419	Long, William H.		1	10	F M F	11
421	Leforge, Matthew		7	8	T M F	4
117	Leighfield, Edwin		5	10	F M F	4
565	Lake, Wm.		5	9	F S M F	4
508	Moore, George A.	J	1 2	9	F M F	4
509	Moore, John A.		1-2	9	F M F	4
442	Murtland, Robert		8	9	F M F	4

LIST OF VOTERS.

No. on Roll.	Name.	Juror.	Lot.	Con.	Qualificat'n	P. O.
443	Murtland, Richard		8	9	T M F	4
444	Murtland, David		8	8	F M F	4
446	McDowell, James	J	10	9	F M F	1
447	McDowell, Matthew	J	10	9	F M F	1
448	Moffat, Wm.	J	7-8	9	F M F	4
461	McBride, James		1	10	F M F	5
528	Moore, John N.	J	1	9	F M F	4
551	Rohrer, Jerome	J	10	7	F M F	6
552	Rohrer, Jeremiah	J	10	7	F M F	6
553	Rohrer, David, Jr.	J	2-4	8	F M F	8
554	Rohrer, John N.		2-4	8	F M F	8
564	Rohrer, Ireneus	J	5	9	F M F	4
566	Rohrer, Richard	J	6	8	F M F	4
590	Rohrer, Oliver H.		1	9	F M F	4
593	Simpson, George		9	7	F M F	6
604	Shoff, Albert	J	9	10	F M F	1
605	Soper, Jackson	J	9	9	F M F	1
612	Swick, Stephen	J	10	9	T M F	1
614	Soper, Lewis	J	8	10	F S M F	1
615	Soper, Owen	J			F M F	1

TOWNSHIP OF NORTH WALSINGHAM 7

No. on Roll.	Name.	Juror.	Lot.	Con.	Qualificat'n	P. O.
656	Terry, Richard		5	7	F M F	6
659	Tait, Malcolm, Jr.		9	9	F M F	1
672	Visaw, Robert		2	7	F M F	8
678	Wingrove, Chas. L.		9	7	F M F	6
726	Wiley, Richard		2	10	F M F	4
730	White, Stephen	J	5	10	T M F	1

PART II.—List of persons entitled to vote at Municipal Elections only.

10	Armstrong, Chas.		10	10	F	1
9	Armstrong, Denis		10	10	F	7
118	Abbott, Mrs. A.		3	8	F	4
41	Andress, Walter		1	8	T	8
119	Bishoprick, Oscar		4	7	T	42

LIST OF VOTERS.

No. on Roll.	Name.	Jurat.	Lot	Con.	Qualificat'n	P. O.
139	Christmas, Austin		8	8	T	6
183	Chapman, Edward		1	8	T	8
206	Dare, Simeon					
207	Dunning, James		10	7	T	6
228	Dillon, Matthew		8	7	T	36
			10	8	T	7
606	Everett, Chas.		9	10	T	38
245	Foster, Desmer					
254	Franklin, Miss A.		1	8	T	47
256	Foster, Mrs. Caroline		2	10	T	9
280	Fick, Richard		7	9	T	4
			1	8	T	38
331	Hutchinson, Jos., Jr.					
336	Hutchinson, James		7	9	T	6
			7	8	T	6
401	Langfield, John					
401	Lennox, John		8	7	T	6
404	Lemon, Geo. W.		8	7	F	28
			8	9	F	10
422	Moffatt, James					
441	Moore, Geo. O.		1	7	F	8
	Moffatt, Thos.		8	8	F	4
			8	9	F	35

TOWNSHIP OF NORTH WALSHINGHAM 9

No. on Roll.	Name.	Juror.	Lot.	Con.	Qualificat'n	P. O.
535	Nevett, Wm.		10	9	F	12
546	Pratt, Joseph		10	8	F	14
567	Rohrer, Mrs. E.		3	10	F	4
243	Roberts, Joseph		7	7	F	17
312	Roberts, Andrew		7	7	F	42
594	Stephens, John		3	8	F	11
612	Swick, Mrs. C.		10	9	F	1
40	Salmon, James		1	8	F	10
655	Terry, Henry		5	7	F	6
677	Wingrove, John		6	7	F	6
692	Williams, Mrs. E.		4	10	F	4
730	White, William		5	10	F	34

P. O.

6
8

6
6
7

3

LIST OF VOTERS.

No. on Roll.	Name.	Juror.	Lot.	Con.	Qualificat'n	P. O.
--------------	-------	--------	------	------	--------------	-------

PART III.—List of persons entitled to vote at Elections to the Legislative Assembly only.

255	Foster, Frederick		6	8	M F	4
395	Kite, John		I	8	M F	8
420	Long, James W.		I	10	M F	11
613	Swick, Westey		10	9	M F	I
632	Smith, Philip		8	8	M F	6

NO. OF VOTERS.

Legislative Assembly and Municipal,	103
Municipal only,	35
Legislative Assembly only,	5
	<hr/>
	143

Jurors, 51.

VOTERS' LIST, 1895.

Municipality of the Township of North Walsingham, County of Norfolk.

POLLING SUB-DIVISION NO. 2.

Comprising Lots 1, 2, 3, 4, 5, 6, 7, 8, 9, 10, in Concessions 11, 12, 13, 14.

PART I.—List of persons entitled to vote at both Municipal Elections and Elections to the Legislative Assembly.

No. on Roll.	Name.	Juror.	Lot.	Con.	Qualificat'n	P. O.
19	Alward, James	J	5	13	F M F	5
20	Aspden, Thos.	J	8	14	T M F	1
21	Armstrong, William	J	10	14	T M F	14
22	Armstrong, Chas	J	10	14	F S M F	14
32	Anscombe, James		10	12	F M F	1
33	Axford, John W.		10	12	T M F	1
35	Anscombe, Thos.		6	11	F M F	1
36	Anscombe, William		6	11	F M F	1
37	Atkinson, Chas. C.	J	2	12	F M F	
38	Atkinson, John C.	J	2	12	F M F	
39	Atkinson, Chas.		2	12	F M F	
78	Baldwin, J. W.	J	1	14	F M F	5
80	Boyd, John	J	4	13	F M F	5
81	Barton, Arthur	J	9	14	F M F	1
101	Birdsall, Sanford		1	14	F M F	5
102	Birdsall, John A.		1	14	F M F	5
112	Balcom, William		7	11	F M F	1
113	Bonser, James	J	7	12	F M F	1
114	Bonser, John		7	12	F S M F	1
115	Blundell, Wm.		3	12	T M F	5

LIST OF VOTERS.

No. on Roll.	Name.	Juror.	Lot.	Con.	Qualificat'n	P. O.
115	Blundell, Wm., Jr.		3	12	F M F	11
178	Corman, Robt.					
180	Curtis, John A.	J	5	13	F M F	5
181	Card, Wm. H.	J	2	14	F M F	14
189	Carrier, Charles	J	7	14	T M F	14
190	Chadwick, William	J	7	14	F M F	14
			1	14	F M F	5
216	Downey, Bernard					
217	Downey, Daniel	J	8	13	F M F	1
218	Downey, Robt.					
224	Disher, John	J	9	13	F M F	1
225	Disher, John H.	J	9	13	F M F	1
226	Dell, Jonathan	J	5	14	F M F	14
227	Davis, Job	J	5	14	T M F	14
103	Davis, Henry	J	6	12	F M F	1
480	Davis, William	J	5	12	F M F	1
			1	14	T M F	5
			7	12	T M F	1
257	Franklin, Wm.					
258	Fisher, Christian					
259	Fisher, Hermon		9	12	F M F	1
261	Farrow, W. B.		9	12	F M F	1
262	Flood, Wm.	J	9	12	F S M F	1
277	Fisback, Wm.	J	4	14	T M F	5
		J	10	14	T M F	14
		J	3	14	T M F	1
			3	11	F M F	1

TOWNSHIP OF NORTH WALSHINGHAM 13

No. on Roll.	Name.	Juror.	Lot.	Con.	Qualificat'n	P. O.
278	Fairburn, Alexander	J	3	12	F M F	11
253	Fairburn, John	J	2-3	11	F M F	11
286	Gable, Frederick		5	11	F S M F	I
287	Gable, John		5	11	F M F	I
288	Gable, Edwick		5	11	T M F	I
289	Gable, William		5	11	T M F	I
295	Gable, Frank		4	12	F M F	5
304	Godby, George		10	11	F M F	I
305	Godby, Peter		I	11	F M F	11
306	Godby, Robert		I	11	F M F	11
527	Godby, William		I	11	F M F	4
328	Holmes, Robert	J	10	11	F M F	I
329	Hinks, S. B	J	10	11	F M F	I
330	Hinks, Wm. J.	J	10	11	F M F	I
342	Hosner, Chas.	J	4	13	F M F	5
343	Hethrington, Cuthbert		I	14	F M F	5
344	Hosner, George		6	13	T M F	5
345	House, Louis		10	14	F M F	14
350	House, Frederick		9	14	F M F	14
351	House, Frederick, Jr.		9	14	F S M F	14
352	Hosner, John M.		8	14	F S M F	14
353	Hosner, John		8	14	F M F	14
354	Hudson, Henry		5	14	F M F	15
355	Hyland, John		3	14	F M F	5

Qualificat'n
P. O.

M F
11

F
F
F
F
F
5
5
14
14
5

I
I
I
14
14
I
I
5
I

LIST OF VOTERS.

No. on Roll.	Name.	Juror.	Lot.	Con.	Qualificat'n	P. O.
372	Jamieson, J. W.	J				
373	Johnson, Sidney	J	5	12	T M F	I
374	Johnson, James	J	3	13	F M F	5
378	Johnson, Frank	J	3	12	F M F	5
					F M F	I
392	Kelly, George A.	J				
394	Kelly, Robert	J	1	13	T M F	5
			5	11	F M F	I
408	Lee, Benjamin					
410	Lemore, Ludovic	J	1	14	F M F	5
412	Lemon, Nathaniel	J	4	14	F M F	5
413	Lewis, Levi	J	7	14	F M F	I
		J	8	13	F M F	5
439	Mills, Wm.					
440	Mills, Wm., Jr.	J	6	11	F M F	I
473	Martin, James E.	J	6	11	F M F	I
474	Martin, James, Jr.	J	7	12	F M F	I
476	Mills, John, Jr.	J	7	12	F M F	I
477	Mills, John		6	12	F M F	I
478	Mills, James		5	12	F M F	I
481	McGregor, Arthur		5	12	F S M F	I
482	McBride, Samuel		6	13	F M F	5
483	McBride, Wm.	J	1	12	F M F	5
484	Mansell, George	J	1	12	F M F	5
485	Mansell, Joseph	J	2	13	F M F	5
		J	3	13	F M F	5

TOWNSHIP OF NORTH WALSINGHAM 15

Qualificat'n	P. O.
M F	1
M F	5
M F	5
M F	1
I F	5
I F	1
F	5
F F	5
F F	1
F F	5
F	1
F F	1
F F	1
F F	1
F	1
5	
5	
5	
5	
5	

No. on Roll.	Name.	Jurat.	Lot.	Con.	Qualificat'n	P. O.
487	Meyer, Delmer		5	14	F M F	5
488	Meyer, George E.		5	14	T M F	5
490	Mills, Lorn	J	10	14	F M F	14
494	Mills, Andrew	J	6	12	F M F	5
503	Messeccar, John W.	J	6	14	F M F	14
504	Mickle, William	J	4	14	F M F	14
505	Mitchell, Albert	J	2	14	F M F	5
506	Mitchell, Edward	J	2	14	F M F	5
521	Mills, Robert	J	9	11	F M F	1
522	McKibbon, Albert	J	8	12	F M F	1
523	Mills, James		6	11	F M F	1
524	Mills, Edward		6	11	F S M F	1
525	Miln, Alexander	J	2	12	F M F	1
526	Mossey, William	J	9	12	F M F	11
529	McGregor, Carlos	J	5-6	14	F M F	5
530	McGregor, James		5-6	14	F M F	5
409	Mabee, Clarence	J	1	14	T M F	5
540	Pick, Enoch	J	5	14	F M F	5
562	Reid, Hugh	J	4	11	F M F	1
572	Rutledge, Chas.	J	1	12	F M F	5
573	Rutledge, John	J	1	12	F M F	5
571	Robinson, Adelbert	J	10	12	F M F	1
574	Rice, Henry	J	1	13	F M F	5
575	Reid, John A.		7	13	F M F	1
576	Reid, John W.	J	7	13	F M F	1
577	Reid, Frank	J	7	13	F M F	1
587	Rutledge, John W.	J	4	12	F M F	5

LIST OF VOTERS.

No. on Roll.	Name.	Juror.	Lot.	Con.	Qualificat'n	P. O.
589	Robinson, Geo. B.		I	II	F M F	5
606	Stuart, Chas., Jr.	J	8	II	F M F	I
608	Stuart, Charles		7	II	T M F	I
609	Stuart, Robt.	J	7	II	F M F	I
610	Stuart, Louis	J	7	II	F M F	I
611	Sinden, Frederick	J	10	13	F M F	I
624	Sinden, Squire	J	10	13	F M F	I
625	Sinden, Wallace	J	9	13	F M F	I
627	Slaght, James H.		I	13	F S M F	I
628	Slaght, Geo. A., Jr.		I	13	F S M F	5
629	Slaght, Geo.		I	13	F M F	5
651	Smith, Elijah		10	II	F M F	I
652	Smith, Geo. W.		10	II	T M F	I
653	Snively, Timothy		9	II	F M F	I
411	Stewart, William	J	4	14	T M F	5
414	Sexsmith, John	J	8	13	T M F	5
674	Sinden, Asahal	J	6	14	F M F	I
658	Tait, Malcolm		9	II	F M F	I
674	Vansickle, Isaiah	J	6	14	T M F	14

LIST OF VOTERS.

No. on Roll.	Name.	Juror.	Lot.	Con.	Qualificat'n	P. O.
--------------	-------	--------	------	------	--------------	-------

PART II.—List of persons entitled to vote at Municipal Elections only.

34	Burns, Rev. Geo.		10	12	F	1
652	Butcher, James		10	11	F	1
191	Carson, Eugene		1	14	F	5
260	Foster, George		4	14	F	50
307	Godby, Mrs. Chas.		1	11	F	11
290	Gable, Simeon		7	11	F	1
296	Gale, Edwin		2	12	F	5
303	Gilmore, Thos.		8	14	F	14
393	Kelly, William		1	13	F	5
354	Mabee, Lena		5	14	F	15
479	Mills, Wm. G.		7	12	F	31
502	McCready, Mrs. M. A.		10	14	F	14
289	Sovereign, L. G.		5	11	F	10
607	Stuart, James		7	11	F	1
626	Seymour, John		6	12	F	36
630	Stratton, Henry		3	14	F	18

TOWNSHIP OF NORTH WALSHINGHAM 19

No. on Roll	Name.	Juror.	Lot.	Con.	Qualificat'n	P. O.
654	Snively, Wallace		9	11	F	1
708	Wilson, David		6-7	14	F	26
724	Wark, William		10	14	F	14
676	Young, Robt.		4	14	F	14

PART III.—List of persons entitled to vote at Elections to the Legislative Assembly only.

100	Barton, Alexander		3	14	M F	5
179	Carrier, John G.		2	14	M F	5
279	Fluellin, J. M.		1	11	M F	11
115	Lade, Wm.		9	14	M F	1
486	Mansell, Thos.		2	13	M F	5
520	Matthews, Sydney		9	12	M F	1

Qualificat'n P. O.

Municipal Elec-

F 1
F 1

F 5

F 50

11
1
5
14

5

15
31
14

10
1
36
18

LIST OF VOTERS.

No. on Roll.	Name.	Juror.	Lot.	Con.	Qualificat'n	P. O.
588	Robinson, Jonathan		3	11	M F	11
675	Vaughan, James		1	11	M F	5
728	Williams, Abel		1	11	M F	5 5
729	Williams, Alfred		1	11	M F	

NO. OF VOTERS.

Legislative Assembly and Municipal, 150
 Municipal only, 20
 Legislative Assembly only, 10

 180

Jurors, 84.

VOTERS' LIST, 1895.

Municipality of the Township of North Walsingham, County of Norfolk.

POLLING SUB-DIVISION NO. 3.

Comprising Lots 11, 12, 13, 14, in Concessions 7, 8, 9, 10, 11, 12, 13, 14, or all Concessions.

PART I.—List of persons entitled to vote at both Municipal Elections and Elections to the Legislative Assembly.

No. on Roll.	Name.	Juror.	Lot.	Con.	Qualificat'n	P. O.
12	Anderson, Martin	J	13	10	T M F	I
23	Armstrong, Melvin	J	14	13	T M F	3
28	Agnew, William		12	12	F M F	I
29	Austin, Lewis		12	12	F M F	I
30	Alward, L.	J	11	12	F M F	I
31	Argyle, Harry		11	12	F M F	I
49	Boughner, Cameron	J	14	12	T M F	I
50	Boughner, Wesley		14	12	F M F	I
57	Berry, John	J	12	10	F M F	I
60	Boyd, James	J	12	9	F M F	I
79	Boughner, Lewis	J	13	13	F M F	I
107	Burkholder, I. W.		12	12	F M F	I
108	Boughner, Samuel		12	12	F M F	I
110	Buckbrough, Thos.		12	12	F M F	I
111	Brackenbery, Samuel		12	12	F M F	I
99	Birdsall, Samuel		12	14	F M F	14
733	Bingham, Rev. Thos.		12	12	T M F	I

Qualificat'n
P. O.
M F 11
M F 5
M F 5
M F 5

LIST OF VOTERS.

No. on Roll.	Name.	Juror.	Lot.	Con.	Qualificat'n	P. O.
124	Cook, William		12	7	F M F	6
125	Cook, Arthur	J	12	7	F M F	6
126	Cook, Alvin	J	13	7	F M F	6
127	Cook, Joseph	J	12	7	F M F	6
153	Collings, Joseph	J	14	11	F M F	6
156	Cupples, Samuel	J	14	10	F M F	I
157	Cupples, Albert C.	J	14	10	F M F	I
160	Craig, William	J	13	9	F M F	I
161	Cruise, James	J	14	10	F M F	I
163	Cruise, Robt.	J	13	9	F M F	I
164	Cruise, Peter	J	13	9	F M F	I
187	Caulton, Chas.	J	11	14	T M F	I
188	Cromwell, Matthew	J	11	14	F M F	I 14
192	Carl, George	J	12	11	T M F	I 14
193	Collings, Thos. H.	J	12	11	F M F	I
194	Cowan, William	J	12	12	F M F	I
195	Cowan, Alexander	J	13	12	F M F	I
734	Cameron, Hugh	J	11	10	F M F	I
735	Cameron, Robt.		11	10	F M F	I
736	Cameron, John		11	10	F S M F	
				10	F S M F	
215	Downey, Henry	J	11	13	F M F	I
109	Durkee, George		12	12	T M F	I
240	Ellison, Chas. B.		12	12	F M F	I

LIST OF VOTERS.

No. on Roll.	Name.	Juror.	Lot.	Con.	Qualificat'n	P. O.
381	Kirn, Louis					
382	Kirn, Frederick	J	11	7	F M F	6
393	Kennady, Wm. C.		11	7	F M F	6
			13	11	T M F	1
406	Laymon, George					
416	Lamb, William	J	13	9	T M F	1
		J	12	12	F M F	1
428	Marshall, Edmond					
429	Martin, James H.		13	11	F M F	1
438	Moore, James J.		13	11	F M F	30
445	Miller, Stephen	J	11	11	F M F	1
450	McCollom, Malcolm	J	12	9	F M F	1
515	Murphy, John	J	14	10	F M F	1
468	Moore, C. H.	J	12	12	F M F	1
469	Moore, Edward	J	14	9	F M F	1
489	Mitchell, David		14	9	F M F	1
507	Mauthe, Philip	J	12	14	F M F	1
511	McDonald, Jonas		11	12	T M F	1
512	McDonald, Edward		13-14	11	T M F	1
514	McDonald, William	J	13-14	11	T M F	1
516	Mather, William		13-14	11	T M F	1
517	McKibbon, Alvin		12	12	F S M F	1
518	McDaniel, I. B.		12	11	F M F	1
61	McDowell, Matthew		12	12	T M F	1
62	McDowell, W. B.	J	12	9	F M F	1
		J	12	9	F M F	1

TOWNSHIP OF NORTH WALSHINGHAM 25

Qualificat'n P. O.
 M F
 I F
 I F
 6
 6
 I
 F
 F
 I
 I
 I
 I
 I
 I
 I
 I
 I
 I
 I
 I
 I
 I

No. on Roll.	Name.	Juror.	Lot.	Con.	Qualificat'n	P. O.
541	Pettit, R. E.	J	12	14	F M F	I
547	Rolloson, Chas.	J	14	7	F M F	6
550	Ribble, William	J	13	7	F M F	6
560	Robinson, George		14	10	T M F	I
561	Robinson, Arthur		14	10	T M F	I
578	Rumley, Francis	J	12	13	F M F	I
586	Rolloson, Joseph	J	13	11	F M F	I
623	Scott, Calvin		13	12	F M F	I
631	Smith, Geo. G.	J	12	14	F M F	14
637	Smith, Jeremiah	J	11-12	14	F M F	14
638	Smith, Joseph E.	J	11-12	14	F M F	14
639	Smith, Frank B.	J	11-12	14	F M F	14
641	Scott, Robert		13	12	F M F	I
642	Stewart, Henry		12	12	F M F	I
643	Stienhoff, Wilson		12	12	F M F	I
644	Stienhoff, John		12	11	F M F	I
645	Stienhoff, Edward	J	12	11	F M F	I
647	Sinden, Samuel		12	11	F M F	I
648	Schooley, John		12	12	T M F	I
650	Shaw, Smith	J	11	12	T M F	I
657	Thompson, John	J	14	7-8	F M F	6

LIST OF VOTERS.

No. on Roll.	Name.	Juror.	Lot.	Con.	Qualificat'n	P. O.
664	Taylor, Isaac	J	13	14	F M F	14
668	Tweedale, J. M.		13	11	F M F	I
669	Trask, George		12	12	F M F	I
685	Wereley, Thos.	J	12	8	T M F	6
686	Wereley, James	J	12	8	T M F	6
687	Walker, William		14	11	F M F	I
688	Walker, Frank	J	14	11	T M F	I
689	Walker, John	J	14	11	T M F	I
691	Wingrove, Wesley	J	11	11	F M F	I
711	Wilson, James H.	J	11	14	F M F	I
712	Wilson, Frank L.	J	11	14	F M F	I
713	Waring, Frederick		12	13	F M F	I

PART II.—List of persons entitled to vote at Municipal Elections only.

79	Boughner, Hiram	12	13	F	I
128	Card, Jas. A.	14	7	F	6
162	Cruise, Wm., Jr.	14	10	F	I
187	Caulton, Mrs. Jane	11	14	F	14
196	Codling, Mrs. N.	12	12	F	I
507	Chandler, E. R.	12	11	F	4I
686	Chamberlin, Frederick	12	8	F	17

TOWNSHIP OF NORTH WALSINGHAM 27

No. on Roll.	Name.	Juror.	Lot.	Con.	Qualificat'n	P. O.
273	Flaherty, Mrs. W.		13	11	F	1
358	Goldie, M.		13	11	F	52
334	Hanna, Mrs. M.		11	8	F	1
518	Hellyer, Thos.		12	12	F	19
366	Jarvis, Andrew		11	9	F	2
12	Knowles, Jas. B.		13	10	F	7
381	Kirn, Geo. M ⁱ		11	7	F	25
450	Killmaster, George		13	11	F	9
405	Lawson, Chas.		13	9	F	24
23	Morrison, James		14	13	F	7
335	Quinn, Richard		12	10	F	35
560	Robinson, Mrs. M.		14	10	F	1

ificat'n P. O.
M F 14
M F I
M F I

I F 6
I F 6
I F I
I F I
I F I
I F I
I F I
I F I

Elec-

I
6
I
14
I
41
17

LIST OF VOTERS.

No. on Roll.	Name.	Juror.	Lot.	Con.	Qualificat'n	P. O.
649	Schooley, Mrs. D.		12	12	F	I
650	Shaw, Mrs. M.		11	12	F	I
297	Smith, Geo. E.		13	11	F	I
62	Vail, Chas.		13	9	F	37
244	Vanderburg, Andrew		12	7	F	10

PART III.—List of persons entitled to vote at Elections to the Legislative Assembly only.

640	Soper, George		12	12	M F	I
646	Stuart, William		12	11	M F	I

NO. OF VOTERS.

Legislative Assembly and Municipal,	119
Municipal only,	24
Legislative Assembly only,	2

 145

Jurors, 64.

VOTERS' LIST, 1895.

Municipality of the Township of North Walsingham, County of Norfolk.

POLLING SUB-DIVISION NO. 4.

Comprising Lots 15, 16, 17, 18, 19, 20, 21, 22, 23, 24, in Concessions 7, 8, 9, 10.

PART I.—List of persons entitled to vote at both Municipal Elections and Elections to the Legislative Assembly.

No. on Roll.	Name.	Juror.	Lot.	Con.	Qualificat'n	P. O.
1	Arn, William	J	24	8	F M F	21
2	Andrews, James A.	J	20	8	F M F	21
3	Alexander, George, Jr.	J	18	8	F M F	2
4	Alexander, George		17	8	F M F	2
5	Alexander, Charles	J	17	8	F M F	2
6	Alexander, Walter	J	17	8	F M F	2
7	Alexander, William	J	15	10	F M F	1
15	Able, John S.	J	22	10	F M F	2
16	Able, John		22	10	F M F	2
17	Arn, George	J	24	8	F M F	21
18	Arn, Corneleus		24	8	F M F	21
44	Brandow, Austin	J	17	7	F M F	6
43	Brandow, Chas.	J	15	7	T M F	6
45	Bates, Wellington	J	22	7	F M F	21
46	Bowyer, John	J	20	8	F M F	2
53	Boughner, John	J	23	10	F M F	21
54	Bloomfield, Nelsen	J	20-21	10	F M F	2
56	Brandow, Oliver	J	19	10	F M F	2
69	Brownlee, Benjamin	J	15	9	F M F	1
70	Bowyer, William		21	10	F M F	2

LIST OF VOTERS.

No. on Roll.	Name.	Juror.	Lot.	Con.	Qualificat'n	P. O.
71	Bowyer, Chas. W.	J	21	10	F M F	2
72	Bowyer, Wm. A.	J	21-22	9	F M F	2
73	Brearley, Thos.	J	21	9	F M F	21
74	Brown, Mark	J	23	9	F M F	21
75	Bridgman, Thos.		21	8	F M F	2
76	Boyd, Nathaniel	J	16	9	F M F	1
235	Byerley, William	J	21	8	T M F	21
129	Carr, Lyman		22	7	F M F	22
130	Cartuer, Richard	J	23	7	F M F	21
131	Cooper, Geo. O.	J	23	8	F M F	21
132	Chambers, Joseph	J	22	8	F M F	21
133	Cross, William	J	21	8	F M F	21
134	Chambers, James		21	7	F M F	21
135	Chambers, John	J	20	7	F M F	21
136	Chambers, Patrick	J	20	7	F M F	21
137	Chambers, George	J	20	7	F M F	21
150	Craig, Robert, Jr.	J	19	10	F M F	2
152	Collings, David	J	18	10	F M F	2
154	Cole, William		16	10	F M F	1
155	Cole, John	J	16	10	F M F	1
167	Craig, Robert		19	10	F M F	2
168	Craig, James	J	19	10	F M F	2
169	Colwell, Samuel	J	20	9	F M F	2
170	Carnahan, John		18	8	F M F	2
425	Cruise, William		17	7	F M F	2
211	Deeg, John	J	15	10	F M F	1

TOWNSHIP OF NORTH WALSLINGHAM 31

No. on Roll	Name.	Juror.	Lot.	Con.	Qualificat'n	P. O.
213	Dales, George		23	10	F M F	21
236	Ecker, Francis	J	21	8	F M F	2
239	Ecker Abraham		24	9	F M F	21
238	Ecker, Nicholas		24	9	F S M F	21
282	Gilbert, Stanley		23	7	F M F	21
293	Gould, William	J	20-22	8	F M F	2
294	Gould, John	J	20-22	8	T M F	2
316	Hagan, William		17-18	7	F M F	6
317	Hagan, James W.		17-18	7	F S M F	6
318	Hagan, John N.	J	17-18	7	F M F	6
319	Hagan, Hugh		24	7	F M F	21
320	Hutchinson, Alexander	J	19	7	F M F	6
321	Hutchinson, Robert	J	19	7	F M F	6
322	Hutchinson, James W.	J	19	7	F M F	6
326	Herbert, George	J	17	10	F M F	1
336	Hunter, James	J	19	9	F M F	2
337	Hill, Joseph	J	19	9	T M F	2
339	Hunter, Simeon	J	19	8	F M F	2
340	Hanna, Thomas		17	8	F M F	2

LIST OF VOTERS.

No. on Roll.	Name.	Juror.	Lot.	Con.	Qualificat'n	P. O.
367	Jones, Charles					
368	Jones, Oliver		24	10	T N F	21
379	Jarvis, Isaac		24	10	F M F	21
380	Jarvis, Edward	J	20	10	F M F	2
			20	10	F M F	2
383	Kriss, John W.	J	18	8	T M F	6
385	Knowles, James	J	17	10	F M F	2
386	Knowles, Frank		18	9	F M F	2
387	Knowles, William		18	9	F M F	2
388	Knowles, William, Jr.	J	18	9	F M F	2
390	Kerrigan, William	J	15	9	F M F	2
402	Lewis, Levi	J	22	7	F M F	21
423	Mayo, Edward					
424	Mayo, George	J	24	7	F M F	22
425	Murphy, Thomas C.	J	23	8	F M F	21
426	Marshall, Thomas	J	17	7	T M F	6
427	Marshall, Edmund	J	16	8	T M F	6
432	Murphy, James		16	8	F M F	6
457	Murphy, Jeremiah	J	21-22	10	F M F	2
452	McIntosh, William, Jr.	J	21	10	F M F	2
453	McIntosh, William	J	22	10	F M F	2
454	Murphy, John, Esq.	J	22	10	F M F	2
455	Murphy, John H.	J	22-23	10	F M F	21
		J	22-23	10	F M F	21

TOWNSHIP OF NORTH WALSHINGHAM

33

No. on Roll.	Name.	Juror.	Lot.	Con.	Qualificat'..	P. O.
456	Murphy, William	J	22-23	10	F M F	21
457	Murphy, Edwin E.	J	22-23	10	F M F	21
458	Murphy, James G.	J	15	8 op	F M F	1
459	Murphy, David	J			F M F	1
463	Murphy, Thomas	J	16	8	F M F	2
464	Murphy, William	J	16	8	F M F	2
465	McKillen, Samuel	J	15	9 op	T M F	1
466	McKillen, James	J	15	9 op	T M F	1
467	McKillen, Benjamin	J	15	9 op	F M F	1
533	Newell, David		23	7	F M F	22
534	Newell, Hugh, Jr.		23	7	F M F	22
535	Newell, Hugh		23	7	F M F	22
233	Robins, William	J	24	10	T M F	20
548	Rohrer, Henry	J	16	7	F M F	6
549	Rodgers, James		24	7	F M F	21
568	Roney, Michael		22	9	F M F	21
569	Ross, John	J	19	9	F M F	2
591	Saunders, John	J	18	7	T M F	6
592	Schram, Nathaniel		20	7	F M F	6
616	Smith, Jas. B.		15	10	F M F	1
617	Smith, Jas. H.	J	15	10	F M F	1

t'n P. O.
21
21
2
2
6
2
2
2
2
2

21

2
1
6
6
5
2
2
2
2

LIST OF VOTERS.

No. on Roll.	Name.	Juror.	Lot.	Con.	Qualificat'n	P. O.
618	Siparell, W. E.	J	20	9	F M F	2
619	Sherk, Uriah	J	21	9	F M F	2
660	Tisdale, Ephraim	J	17	9	F M F	2
661	Tisdale, Ephraim, Jr.	J	17	9	F M F	2
662	Tisdale, Ed.	J	17	9	F S M F	2
670	Underhill, Edward	J	22	9	T M F	2
679	Wheeler, A. H.	J	15	7	T M F	6
681	Wingrove, Whitfield	J	17	7	T M F	6
682	Wilkins, Wm.	J	24	7	F M F	22
683	Wheeler, Amos	J	18	7	F M F	6
684	Wheeler, Jacob	J	19	7	F M F	6
694	Wadham, Chas.	J	24	10	T M F	21
695	Wadham, Cyrus	J	23	8	F M F	21
696	Ward, Robt.	J	24	9	F M F	21
697	Whitehead, Frederick	J	23	8	F S M F	21
698	Whitehead, Marshall	J	23	8	F S M F	21
699	Whitehead, Peter	J	23	8	F M F	21

TOWNSHIP OF NORTH WALSINGHAM 35

No. on F. O.	Name.	Juror.	Lot.	Con.	Qualificat'n	P. O.
-----------------	-------	--------	------	------	--------------	-------

PART II.—List of persons entitled to vote at Municipal Elections only.

42	Brandow, U. R.		15	7	F	6
138	Cruise, William John		22	7	F	44
232	Earls, James L.		24	10	F	20
338	Halliday, David		20	8	F	21
336	Hunter, Mrs. M.		19	9	F	2
337	Hill, Mrs. M.		18	10	F	2
368	Jones, William		24	7	F	22
365	Jones, Mrs. M.		24	7	F	22
383	Kriss, Mrs. D.		18	8	F	6
460	Murphy, Mrs. Jane		15	8	F	1
462	Murphy, Robert		17	9	F	21
45	Mayo, Simon		22	7	F	2

n
P. O.
2
2
2

2
2
2

2

LIST OF VOTERS.

No. on Roll.	Name.	Juror.	Lot.	Con.	Qualificat'n	P. O.
563	Redpath, Miss H.		23	9	F	21
620	Smith, Mrs. Isabella		20	10	F	2
621	Shoup, Mrs. M.		21	9	F	2
680	Wheeler, Henry		15	7	F	6
682	Wingrove, George		17	7	F	6

PART III—List of persons entitled to vote at Elections to the Legislative Assembly only.

14	Alexander, James		20	10	M F	2
68	Balcom, Silas		15	10	M F	1
237	Ecker, William J.		23	9	M F	21
242	Ecker, Wm.		18	9	M F	2
389	Knowles, Frank, Jr.		18	9	M F	2

TOWNSHIP OF NORTH WALSINGHAM 37

No. on Roll.	Name.	Juror.	Lot.	Con.	Qualificat'n	P. O.
693	Wereley, William		21	9	M F	21

NO. OF VOTERS.

Legislative Assembly and Municipal,	125
Municipal only,	16
Legislative Assembly only,	6
	<hr/>
	147

Jurors, 85.

VOTERS' LIST, 1895.

Municipality of the Township of North Walsingham, County of Norfolk.

POLLING SUB-DIVISION NO. 5.

Comprising Lots 15, 16, 17, 18, 19, 20, 21, 22, 23, 24, in Concessions 11, 12, 13, 14.

PART I.—List of persons entitled to vote at both Municipal Elections and Elections to the Legislative Assembly.

No. on Roll.	Name.	Juror.	Lot.	Con.	Qualificat'n	P. O.
51	Bain, William	J	17	11	F M F	1
52	Bain, Thomas	J	18	11	F M F	1
53	Brandow, Charles	J	20	11	F M F	2
82	Brown, William	J	15	13	T M F	3
85	Bunker, Robt	J	16	13	F M F	3
86	Bowers, Frederick	J	16	13	F M F	3
87	Ball, Jonathan	J	17	13	F M F	3
88	Bloomfield, Edward	J	19	14	F M F	3
89	Brackenberry, John	J	19	14	T M F	3
90	Bertram, Frederick	J	19	14	F M F	3
91	Brown, Joshua	J	21	14	F M F	3
92	Booth, Archibald	J	20	14	F M F	19
93	Booth, William	J	20	14	F M F	3
94	Booth, John	J	19	14	F S M F	3
95	Booth, Robert	J	19	14	F M F	3
96	Booth, Joseph	J	19	14	F M F	3
97	Bowers, Bernhart	J	17	14	F M F	3
98	Bowers, Frederick	J	17	14	F M F	3
141	Clark, John	J	15	11	T M F	1
142	Chambers, Isaac	J	16	12	F M F	1

TOWNSHIP OF NORTH WALSHINGHAM

39

No. on Roll.	Name.	Juror.	Lot.	Con.	Qualificat'n	P. O.
143	Curtis, Christopher	J	20	12	T M F	1
144	Curtis, Ernest	J	20	12	T M F	1
145	Chambers, Mahlon	J	23	12	F M F	10
146	Chambers, Louis	J	22	11	F M F	21
147	Chambers, Elias	J	21	11	F M F	21
148	Chambers, James	J	21	11	F M F	21
149	Chambers, Walter	J	22	11	F M F	1
151	Cruise, George	J	19	11	T M F	19
171	Chambers, Leman	J	23	12	F M F	3
172	Cattle, John B.	J	18	12	F M F	3
173	Cattle, Alfred	J	19	13	T M F	3
174	Cattle, Geo. C.	J			T M F	3
175	Cattle, Joseph R.	J			T M F	3
176	Cattle, Edward B.	J			F M F	3
177	Curtis, Thomas	J	17	12	F M F	3
182	Cain, Nelson		19	14	F M F	3
184	Cattle, Frederick		19	14	F M F	3
185	Cattle, Joseph		19	13	F M F	3
222	Cole, Obed.		23	13	F M F	3
208	Dedrick, Wm.		18	11	F M F	3
209	Davis, Wm D.		21	11	F M F	1
210	Davis, Eli, Jr.		22	11	F M F	1
214	Deball, Jacob		23	13	F M F	19
219	Doan, Frank	J	17	14	F M F	3
220	Doan, Ai	J	17	14	T M F	3
221	Doan, Jonathan		17	13	F M F	3
222	Deball, Jacob, Jr.		23	13	T M F	3
223	Doan, Leonard	J	15	14	F M F	14

LIST OF VOTERS.

No. on Roll.	Name.	Juror.	Lot.	Con.	Qualificat'n	P. O.
240	Ellison, Joseph B.		18	12	F M F	3
246	Freeland, Charles	J				
247	Fairchild, Joseph	J	21	11	F M F	20
264	Franklin, John	J	24	11	F M F	21
265	Franklin, Nathaniel	J	17	14	T M F	3
266	Ferguson, James	J	21	14	F M F	3
			21	13	T M F	3
283	Gee, Peter W.	J				
284	Gee, Peter	J	23	11	F M F	20
285	Gee, Frederick	J	23-24	11	F M F	20
298	Gray, Thomas	J	23-24	11	F M F	20
299	Gray, William A.		18	13	F M F	3
301	Gehring, John A.	J	18	13	F S M F	3
302	Griffin, William	J	24	14	T M F	19
		J	20	14	F M F	19
325	Hill, William	J				
327	Hunter, William	J	20	11	F M F	2
341	Holtby, John	J	17	11	F M F	1
348	Hethrington, Charles	J	18	12	F M F	3
347	Hethrington, Jonathan	J	15	14	F M F	3
349	Hillyer, Thomas	J	15	14	F M F	3
		J	24	14	F M F	19

TOWNSHIP OF NORTH WALSINGHAM 41

No. on Roll.	Name.	Jurat.	Lot.	Con.	Qualificat'n	P. O.
186	Jones, John	J	19	13	T M F	3
369	Jackson, J. W.	J	22	12	T M F	3
370	Jeneroux, Frank	J	21	12	T M F	3
371	Jeneroux, Eli	J	21	12	T M F	3
375	Jeffries, George	J	24	13	F M F	19
376	Jackson, Thos.	J	20	14	F M F	19
599	Jamieson, John	J	17	12	T M F	1
403	Lear, William	J	15	11	F M F	1
430	McCollum, John	J	20-21	12	F M F	19
431	Mills, Albert	J	24	12	F M F	19
433	Minor, Daniel	J	19-20	11	F M F	2
434	Minor, Alexander	J	19-20	11	F M F	2
435	Moore, Geo. W.	J	18	11	F M F	2
436	Moore, Thos.	J	18	11	F M F	2
437	Moore, Ed. F.	J	18	11	F M F	2
470	Menser, Augustus	J	24	12	F M F	19
471	Menser, Gustavis	J	24	12	F M F	19
472	Messecar, Hiram	J	19	12	F M F	3
491	McMaster, John	J	16	14	F M F	3
492	McMaster, James A.	J	16	14	F M F	3
493	McMaster, Joel	J	16	14	F M F	3
495	Manary, John	J	21	14	F M F	3
496	McKim, Robt.	J	22	13	F M F	3
497	McKim, Thos.	J	22	13	F M F	3
498	Marsland, Samuel	J	21	14	F M F	19
499	Marsland, John	J	21	14	F M F	19
500	Myers, David	J	21	14	T M F	19

t'n
P. O.
3
20
21
3
3
3

20
20
20
3
3
9
9

LIST OF VOTERS.

No. on Roll.	Name.	Juror.	Lot.	Con.	Qualificat'n	P. O.
536	Pickersgill, George	J	16	11	T M F	1
537	Potts, Reynard	J	23	11	F M F	19
538	Palmer, Isaac		19	12	F M F	3
539	Palmer, E. R.		19	12	F M F	3
542	Pickersgill, Thomas	J	20	13	F M F	3
543	Pickersgill, John		20	13	F S M F	3
544	Pratt, Arthur	J	18	14	F M F	3
545	Pratt, William	J	18	14	F M F	3
501	Pick, Richard	J	21	14	F M F	19
556	Robinson, George	J	21	12	T M F	3
557	Roberts, Vincent	J	22	11	F M F	19
558	Rolloson, William	J	15	11	T M F	1
559	Rolloson, Aaron		15	11	F M F	1
579	Reid, James R.	J	20-21	14	F M F	3
580	Reid, Louis	J	20-21		F M F	3
581	Rodgers, Alfred		24	13	F M F	3
582	Rodgers, Thomas		24	13	F M F	3
583	Rodgers, Albert		24	13	F M F	3
584	Robinson, Frank	J	22	14	F M F	19
570	Reid, Archibald		18	12	F M F	3
595	Swain, Frank	J	17	12	T M F	1
596	Stewart, John	J	15	12	F M F	32

TOWNSHIP OF NORTH WALSINGHAM 43

No. on Roll.	Name.	Juror.	Lot.	Con.	Qualificat'n	P. O.
597	Swain, Chas.	J	17	11	F M F	1
598	Swain, Gilbert		17	12	F M F	1
600	Swain, Henry	J	19	11	F M F	1
601	Sinden, Alexander	J	22	12	F M F	19
602	Sinden, William	J	22	12	F M F	19
603	Smith, Elijah		24	11	F M F	20
633	Slaght, Chas.	J	16	13	F M F	3
634	Slaght, Peter		16	13	T M F	3
635	Smith, S. K.	J	23	14	T M F	19
636	Sinden, Lyman	J	24	13	F M F	19
83	Taylor, William		15	12	F M F	1
663	Thompson, John G.		20	12	F M F	3
665	Taylor, Jacob	J	18	14	F M F	3
666	Taylor, Orlando		18	14	F S M F	3
667	Thorne, William	J	21	13	F M F	3
673	Veit, Leonard	J	21	11	F M F	19
690	Wilson, Henry	J	23	12	F M F	19
714	Wilson, Abram	J	19	14	T M F	3
715	Wilson, John B.		19	14	F M F	3
716	Woodward, Ira	J	20	14	F M F	3
717	Woodward, John	J	22	14	T M F	3

LIST OF VOTERS.

No. on Roll.	Name.	Juror.	Lot.	Con.	Qualificat'n	P. O.
718	Woodward, Joseph	J	22	14	T M F	3
719	Watterson, Thomas		20	13	F M F	3
720	Wilson, Albion		23	13	F M F	3
721	Wilson, Byron	J	23	13	F M F	3
722	Wilson, David		24	14	F M F	19
723	Wilson, Frank	J	24	14	F M F	19

PART II.—List of persons entitled to vote at Municipal Elections only.

141	Alway, Elgin		15	11	F	7
214	Cole, Mrs. E.		22	12	F	19
30	Charlton, John		18	13	F	19
267	Ferguson, Wm.		21	13	F	13
143	Firman, Benjamin		20	12	F	3
301	Helyer, Samuel		24	14	F	19
360	Hethrington, Joseph		15	14	F	1

TOWNSHIP OF NORTH WALSHINGHAM 45

No. on Roll.	Name.	Juror.	Lot.	Con.	Qualificat'n	P. O.
371	Messicar, Mrs. E.		21	12	F	3
585	Robinson		22	14	F	19
141	Sinden, Asahel		15	11	F	7
556	Strom, Mrs. J.		21	12	F	3
595	Swain, Mrs. C.		17	12	F	1

PART III.—List of persons entitled to vote at Elections to the Legislative Assembly only.

77	Boughner, Matthias		20	13	M F	3
84	Brown, Stephen		15	14	M F	3
	Fairchild, Asahel					

NO. OF VOTERS.

Legislative Assembly and Municipal,	143
Municipal only,	12
Legislative Assembly only,	3
	<hr/>
	158

Jurors, 95.

LIST OF VOTERS.

TOTAL NUMBER OF VOTERS IN TOWNSHIP.

Legislative Assembly and Municipal,	640
Municipal only,	107
Legislative Assembly only,	26

773

Total No. of Jurors, 379.

CLERK'S CERTIFICATE.

I, John Phelan, Clerk of the Municipality of North Walsingham, in the County of Norfolk, do hereby certify that parts one and three of the within list constitute a correct list for the year 1895 of all persons appearing by the last revised Assessment Roll of the said Municipality to be entitled to vote at Elections for Members of the Legislative Assembly ; and that parts one and two constitute a correct list for said year of all persons appearing by the said Roll to be entitled to vote at Municipal Elections in the said Municipality ; and I hereby call upon all Electors to examine the said list, and if any omissions or other errors are perceived therein, to take immediate proceedings to have the said errors corrected according to law.

JOHN PHELAN, Township Clerk.

Dated this 25th day of July, 1895.

