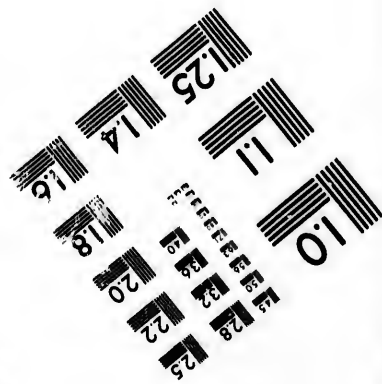
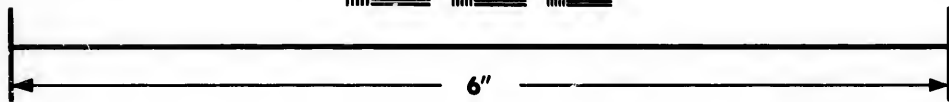
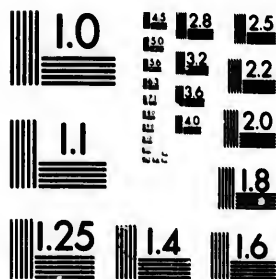


**IMAGE EVALUATION
TEST TARGET (MT-3)**



**Photographic
Sciences
Corporation**

23 WEST MAIN STREET
WEBSTER, N.Y. 14580
(716) 872-4503



**CIHM/ICMH
Microfiche
Series.**

**CIHM/ICMH
Collection de
microfiches.**



Canadian Institute for Historical Microreproductions / Institut canadien de microreproductions historiques



© 1984

The copy filmed here has been reproduced thanks to the generosity of:

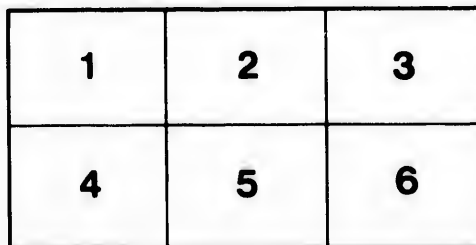
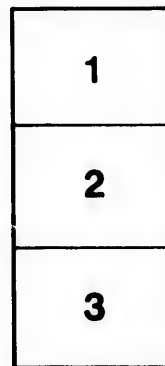
Vancouver Public Library

The images appearing here are the best quality possible considering the condition and legibility of the original copy and in keeping with the filming contract specifications.

Original copies in printed paper covers are filmed beginning with the front cover and ending on the last page with a printed or illustrated impression, or the back cover when appropriate. All other original copies are filmed beginning on the first page with a printed or illustrated impression, and ending on the last page with a printed or illustrated impression.

The last recorded frame on each microfiche shall contain the symbol → (meaning "CONTINUED"), or the symbol ▼ (meaning "END"), whichever applies.

Maps, plates, charts, etc., may be filmed at different reduction ratios. Those too large to be entirely included in one exposure are filmed beginning in the upper left hand corner, left to right and top to bottom, as many frames as required. The following diagrams illustrate the method:



L'exemplaire filmé fut reproduit grâce à la générosité de:

Vancouver Public Library

Les images suivantes ont été reproduites avec le plus grand soin, compte tenu de la condition et de la netteté de l'exemplaire filmé, et en conformité avec les conditions du contrat de filmage.

Les exemplaires originaux dont la couverture en papier est imprimée sont filmés en commençant par le premier plat et en terminant soit par la dernière page qui comporte une empreinte d'impression ou d'illustration, soit par le second plat, selon le cas. Tous les autres exemplaires originaux sont filmés en commençant par la première page qui comporte une empreinte d'impression ou d'illustration et en terminant par la dernière page qui comporte une telle empreinte.

Un des symboles suivants apparaîtra sur la dernière image de chaque microfiche, selon le cas: le symbole → signifie "A SUIVRE", le symbole ▼ signifie "FIN".

Les cartes, planches, tableaux, etc., peuvent être filmés à des taux de réduction différents. Lorsque le document est trop grand pour être reproduit en un seul cliché, il est filmé à partir de l'angle supérieur gauche, de gauche à droite, et de haut en bas, en prenant le nombre d'images nécessaire. Les diagrammes suivants illustrent la méthode.

ils
lu
ifier
ne
age

rata

elure,
à

32X

10⁰¹⁵

Beauties and Industries of

VANCOUVER, B. C.

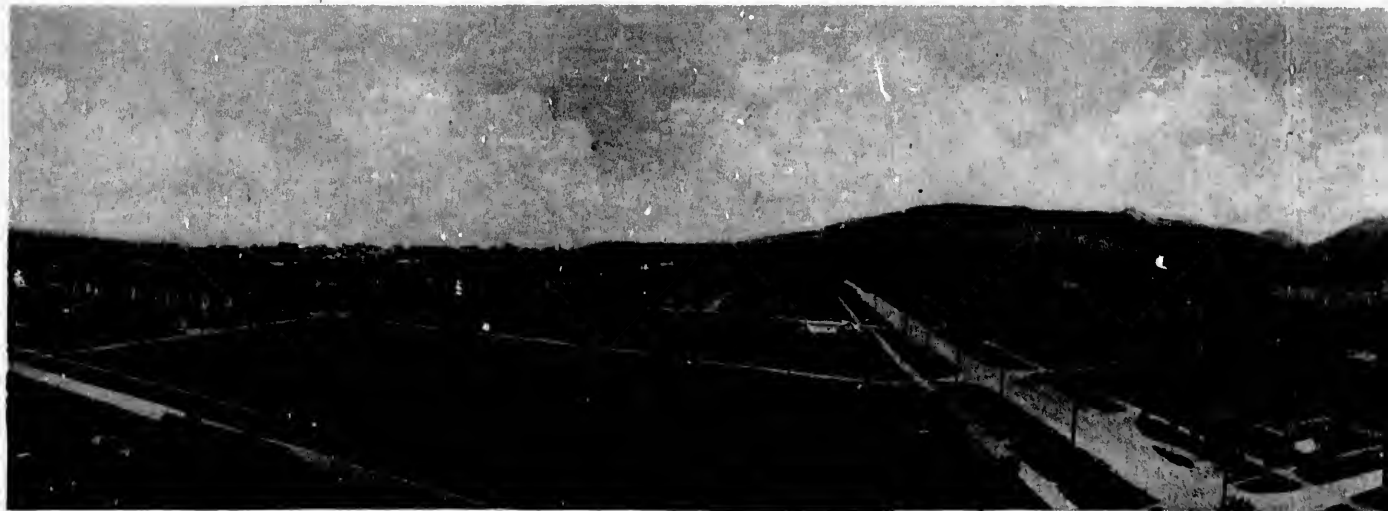
~~~~~  
Illustrated in Photo-Gravure  
~~~~~

Entered according to Act of Parliament of Canada, in the year 1896, at the Department of Agriculture, by the Thomson Stationery Co., L't'd, Booksellers, Stationers, Printers and Lithographers,
Vancouver, B. C.

THE ALBERTYPE CO., N. Y.



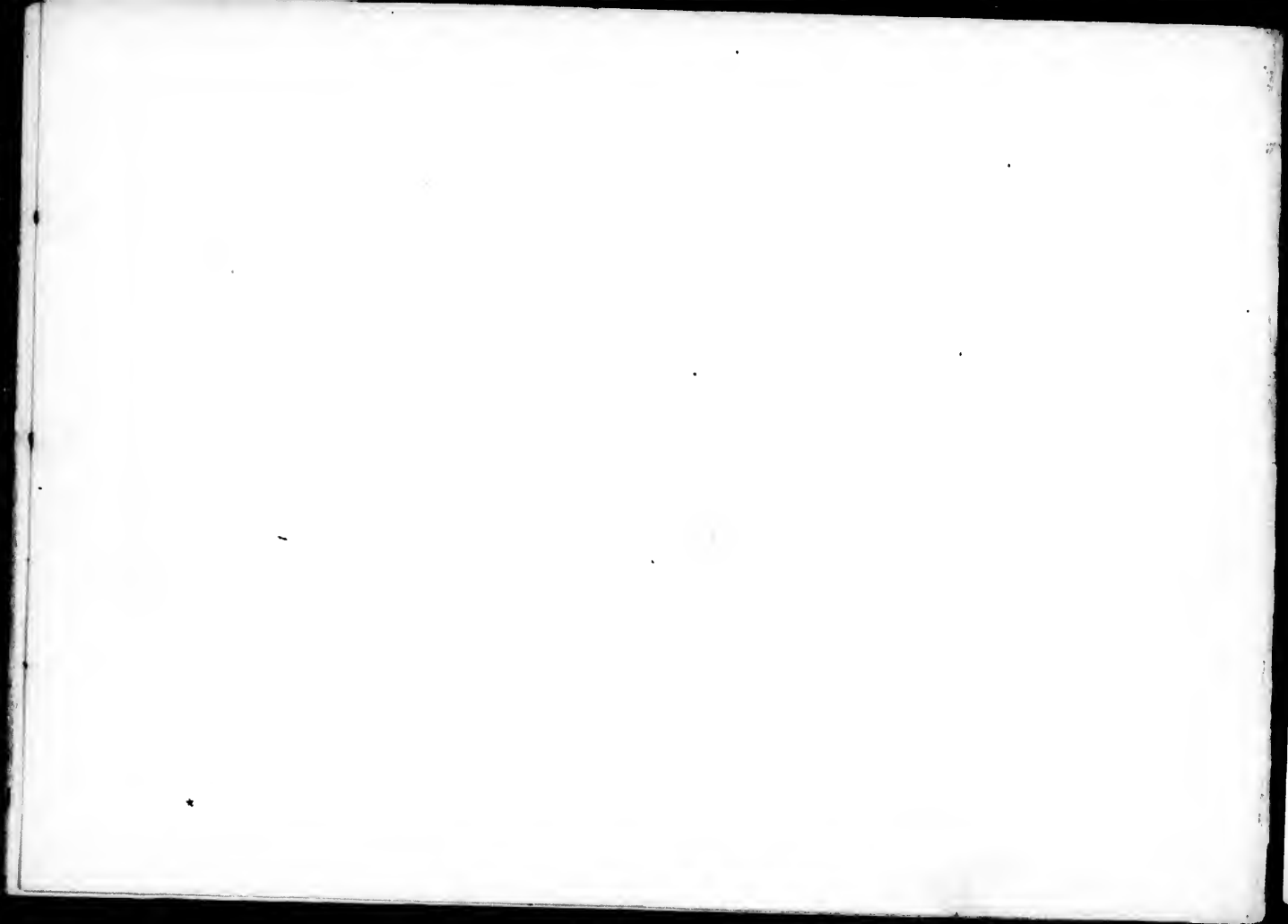


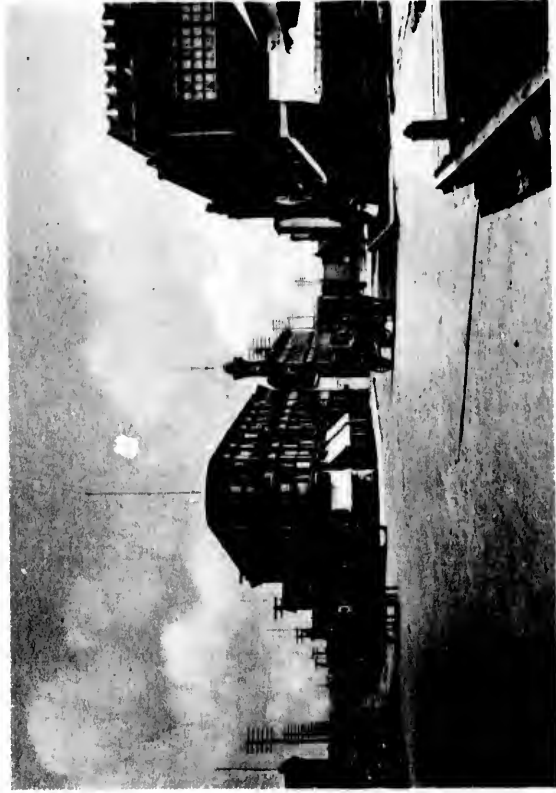


CITY OF VANCO

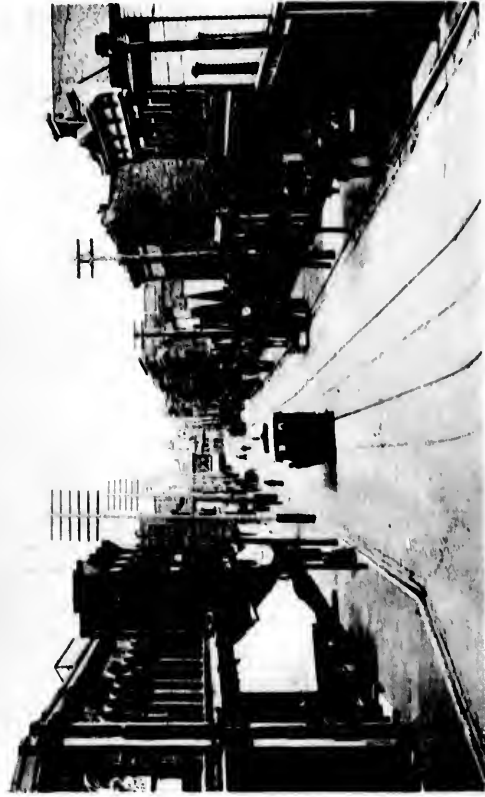


CITY OF VANCOUVER.

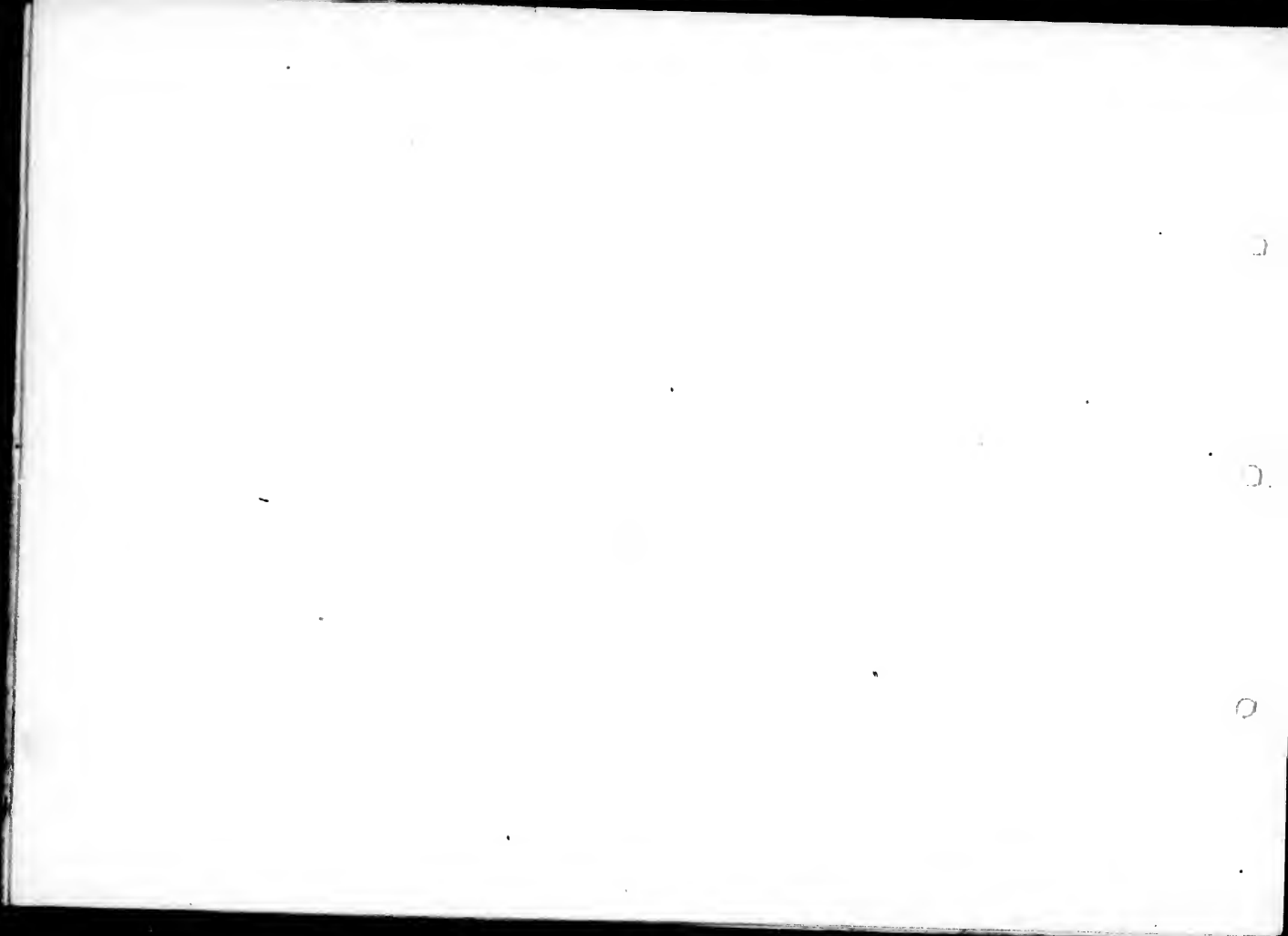




CORDOVA AND WATER STREETS.



CORDOVA STREET, ALASKA, LOOKING EAST.





BANK OF MONTREAL.



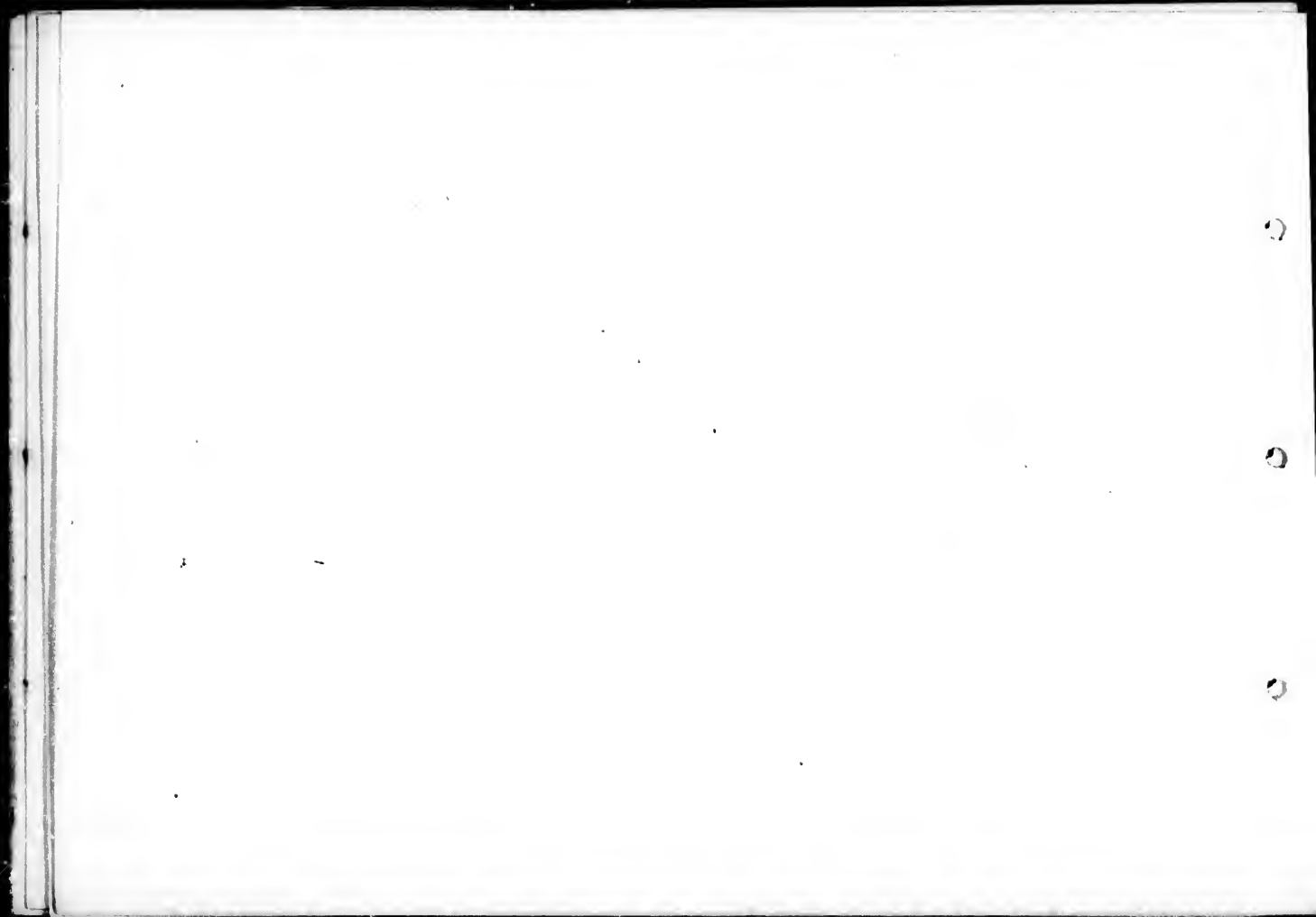
BANK OF BRITISH NORTH AMERICA.



BANK OF BRITISH COLUMBIA.

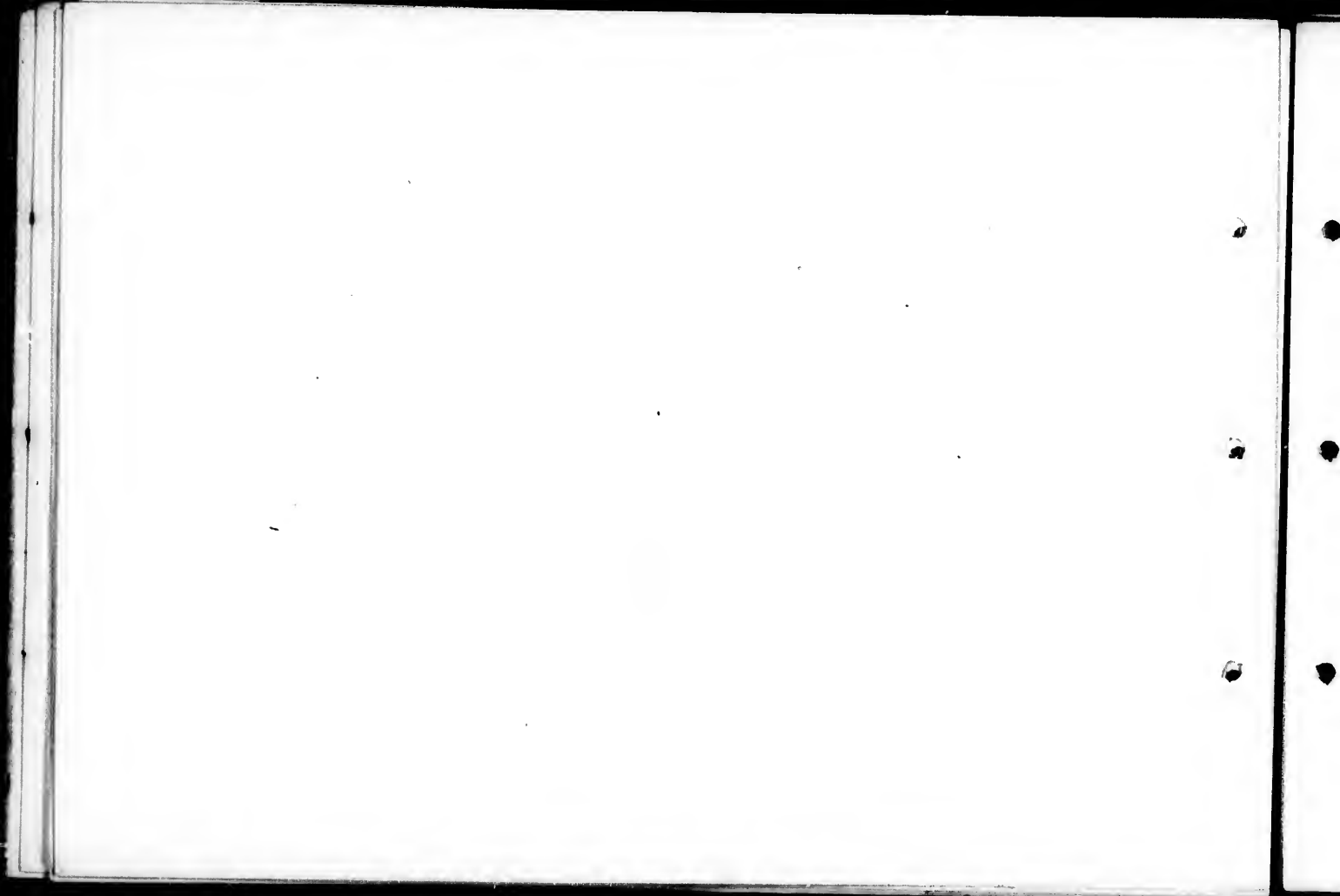


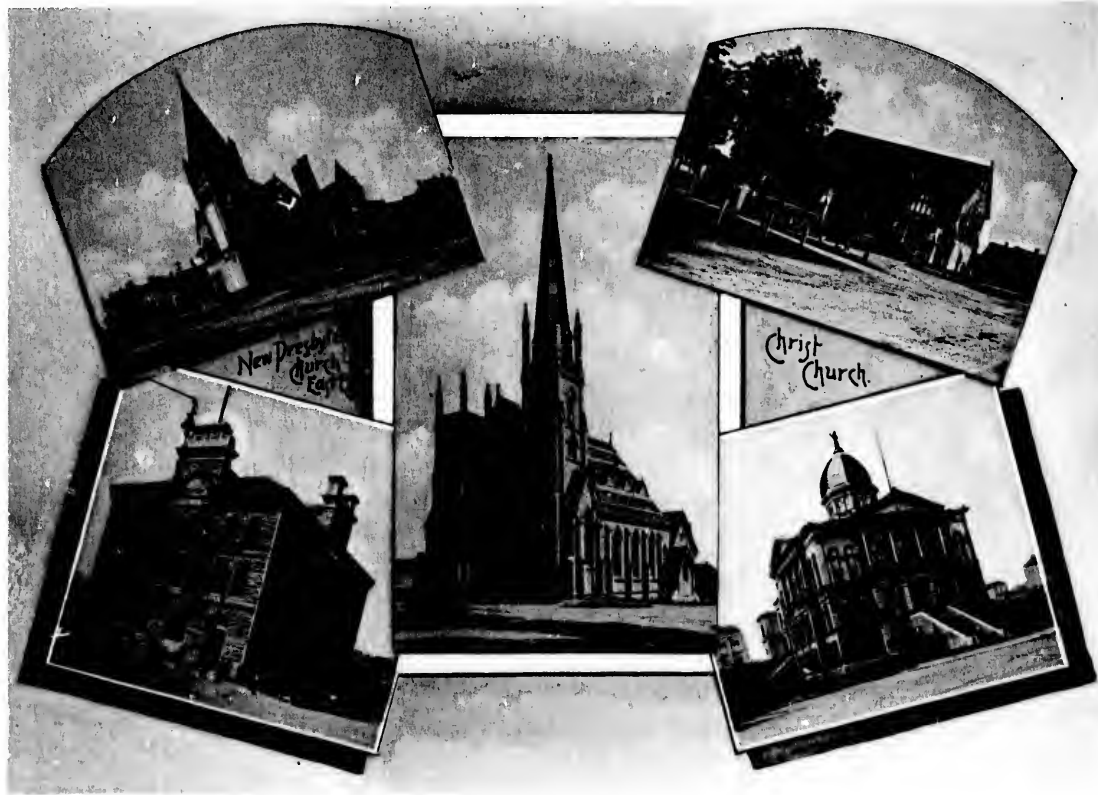
IMPERIAL BANK.





VANCOUVER HARBOR, FROM THE CITY.

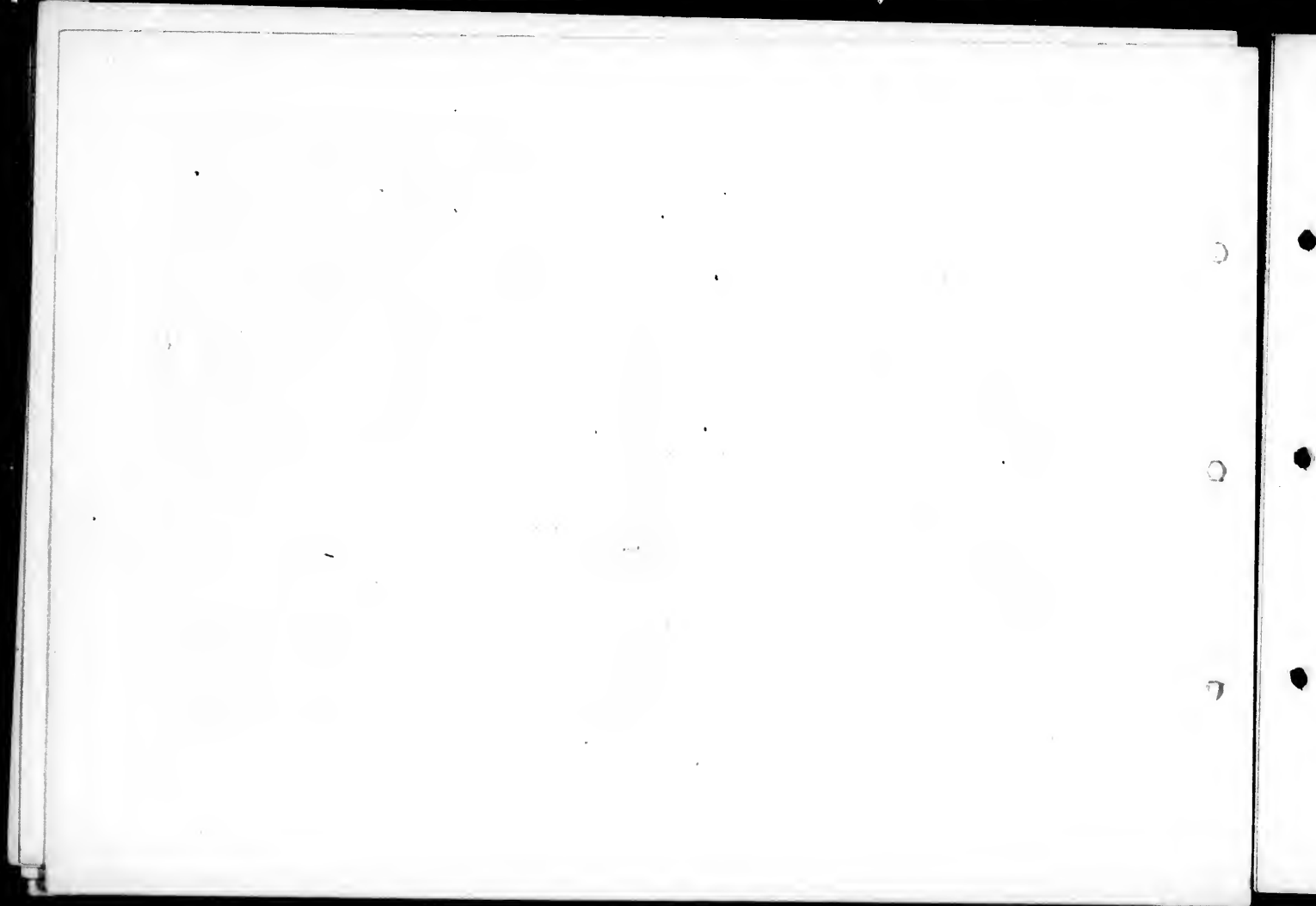




POST OFFICE.

ST. ANDREW'S CHURCH.

COURT HOUSE.



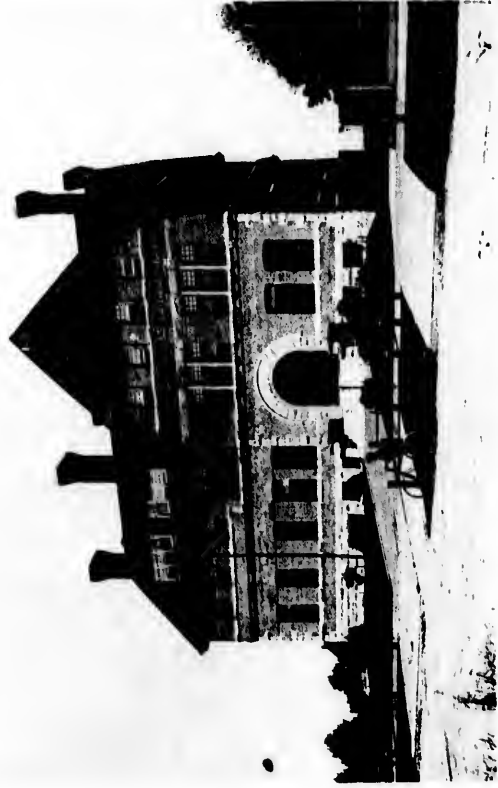


BIG TREES—STANLEY PARK.





HOTEL VANCOUVER.



VANCOUVER CLUB HOUSE.

THE
LIBRARY
OF THE
MUSEUM OF
COMPARATIVE ZOOLOGY
AND ANATOMY
HARVARD UNIVERSITY
CAMBRIDGE, MASS.

1912
1913
1914
1915
1916
1917
1918
1919
1920
1921
1922
1923
1924
1925
1926
1927
1928
1929
1930
1931
1932
1933
1934
1935
1936
1937
1938
1939
1940
1941
1942
1943
1944
1945
1946
1947
1948
1949
1950
1951
1952
1953
1954
1955
1956
1957
1958
1959
1960
1961
1962
1963
1964
1965
1966
1967
1968
1969
1970
1971
1972
1973
1974
1975
1976
1977
1978
1979
1980
1981
1982
1983
1984
1985
1986
1987
1988
1989
1990
1991
1992
1993
1994
1995
1996
1997
1998
1999
2000
2001
2002
2003
2004
2005
2006
2007
2008
2009
2010
2011
2012
2013
2014
2015
2016
2017
2018
2019
2020
2021
2022
2023
2024
2025

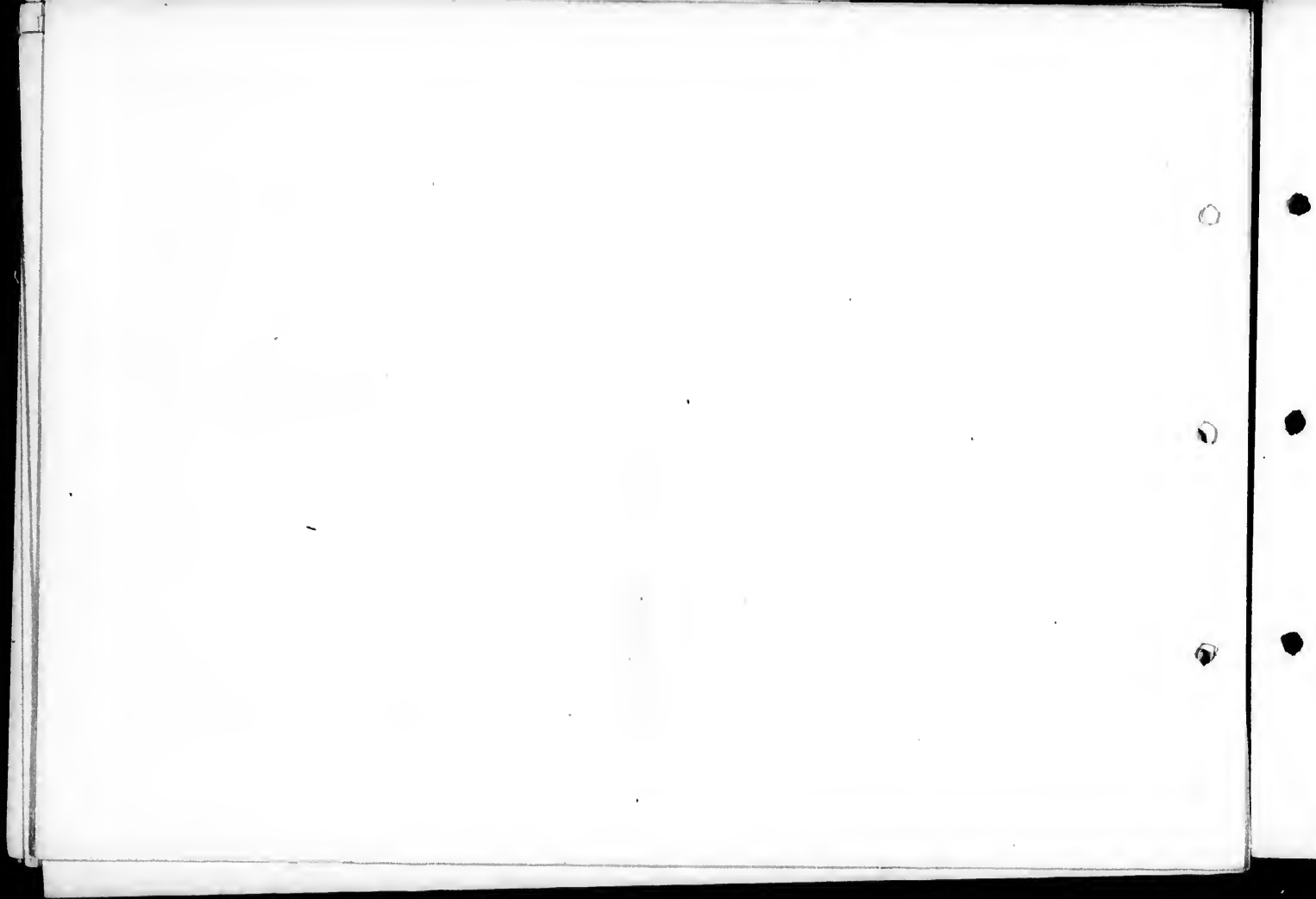
10

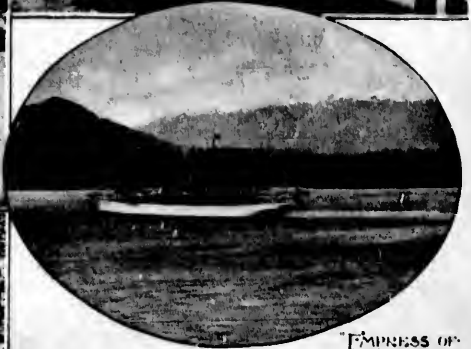
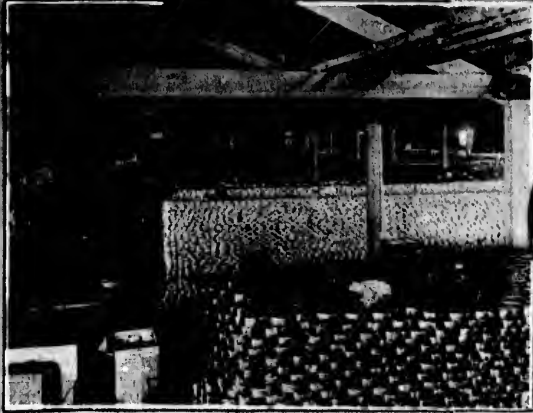
11

12



DRIVE IN STANLEY PARK.

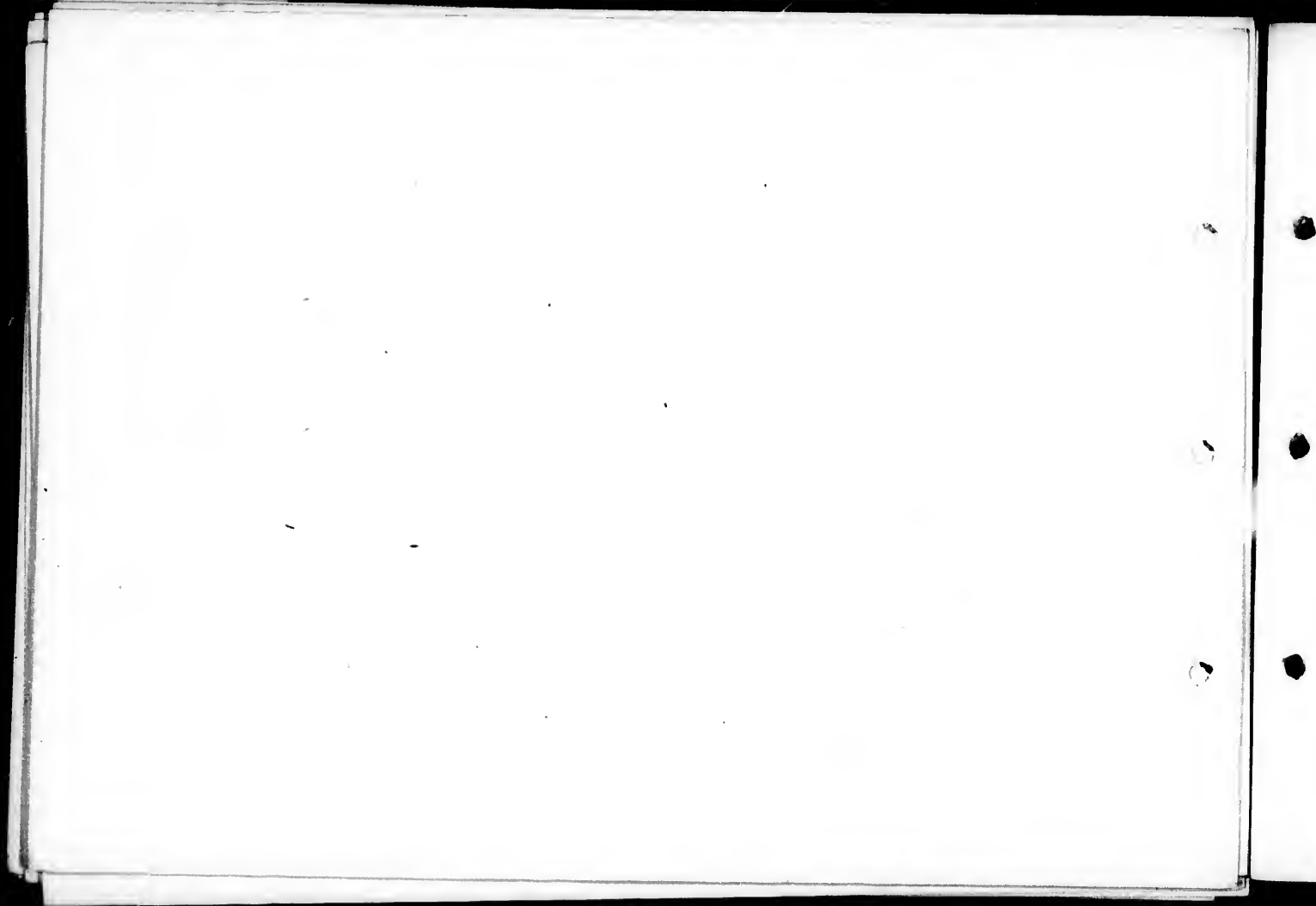




INTERIOR OF BRITANNIA CANNERY.

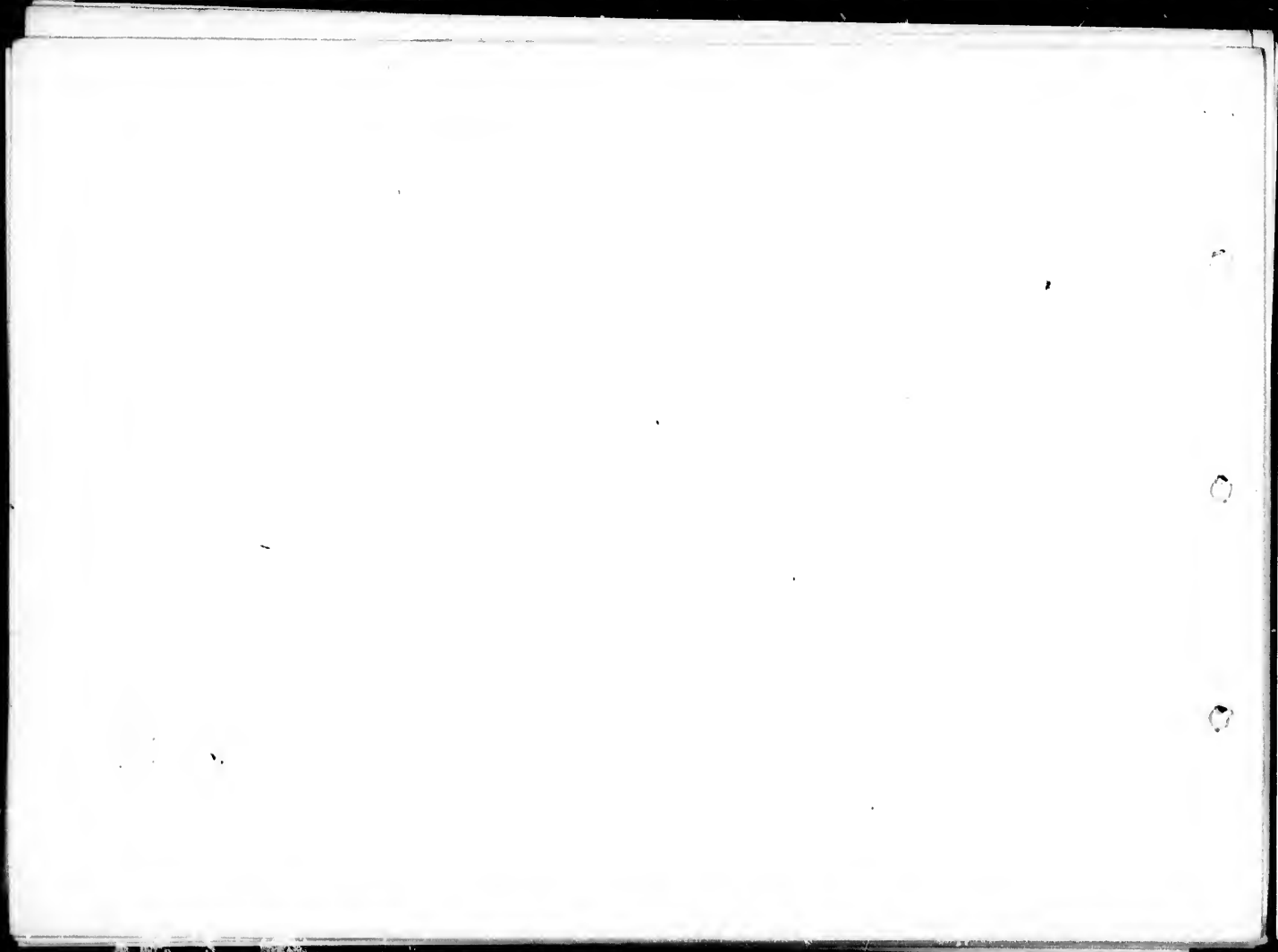
EMPEROR OF
CHINA

SOME BRITISH COLUMBIA INDUSTRIES.





FISHING FLEET.

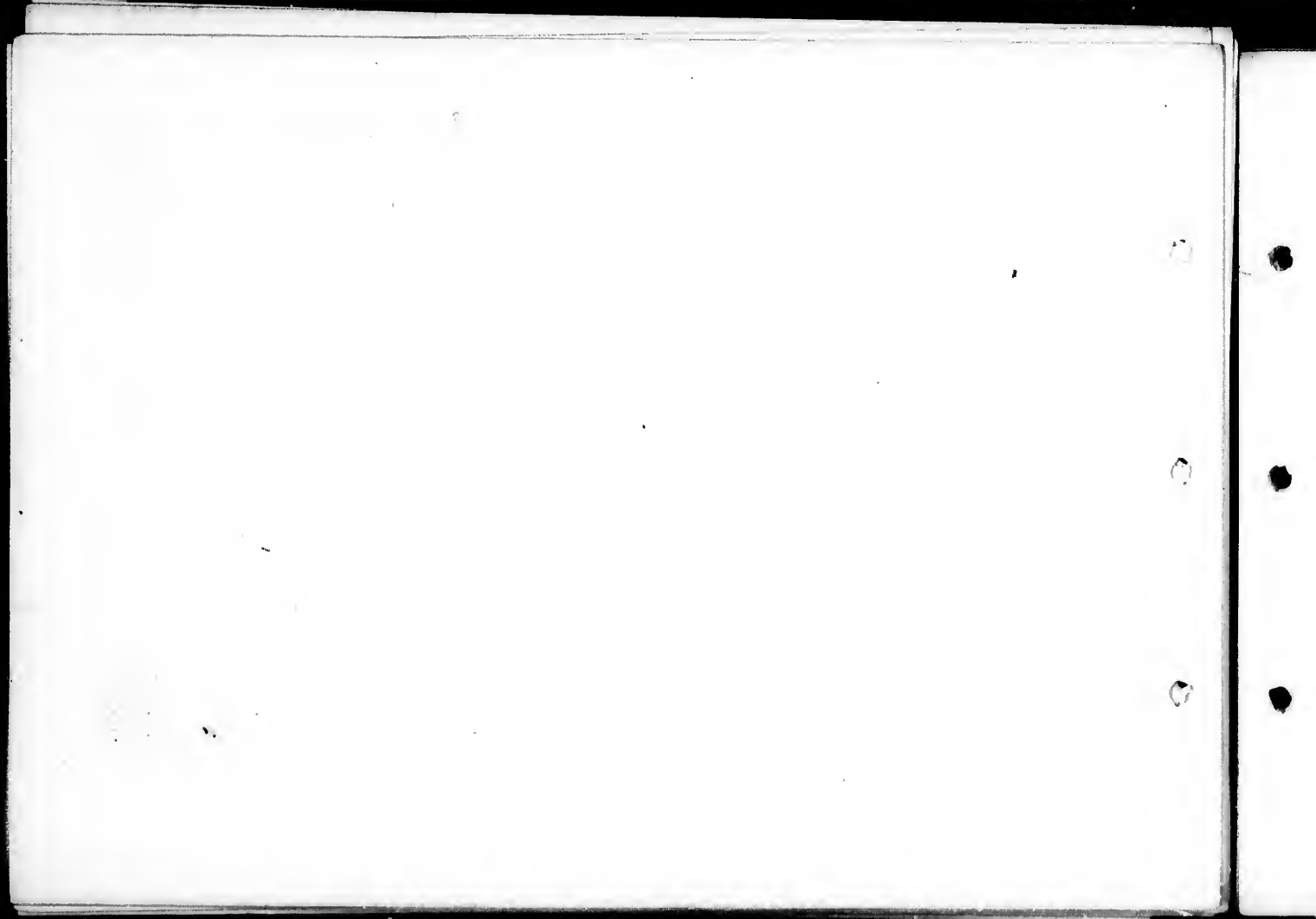




OX TEAM HAULING LOGS.



30,000 FRASER RIVER SALMON.





LAKE LOUISE, NEAR LAGGAN, C. P. R.

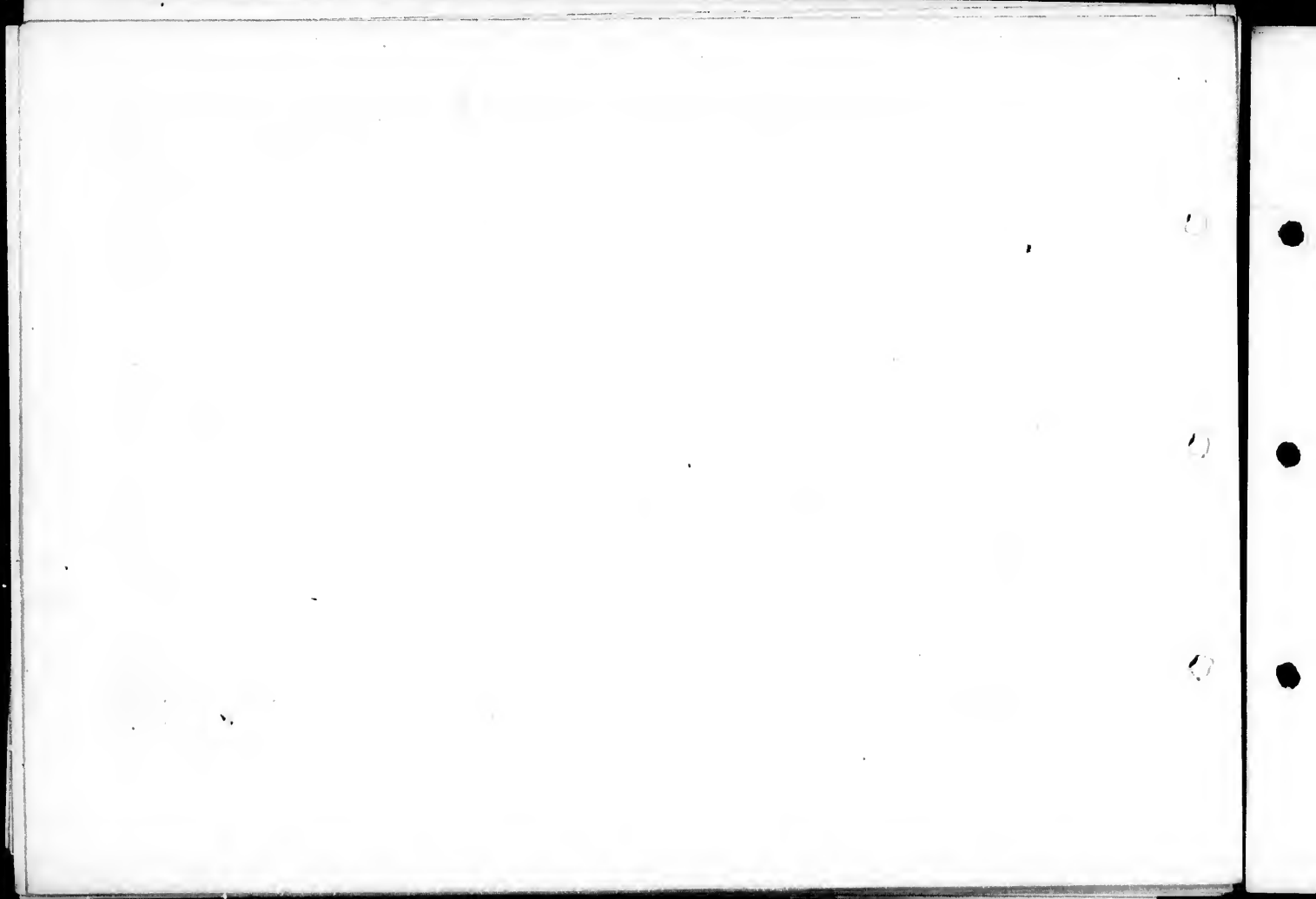


Power
The
First
Steamer
of the
Pacific



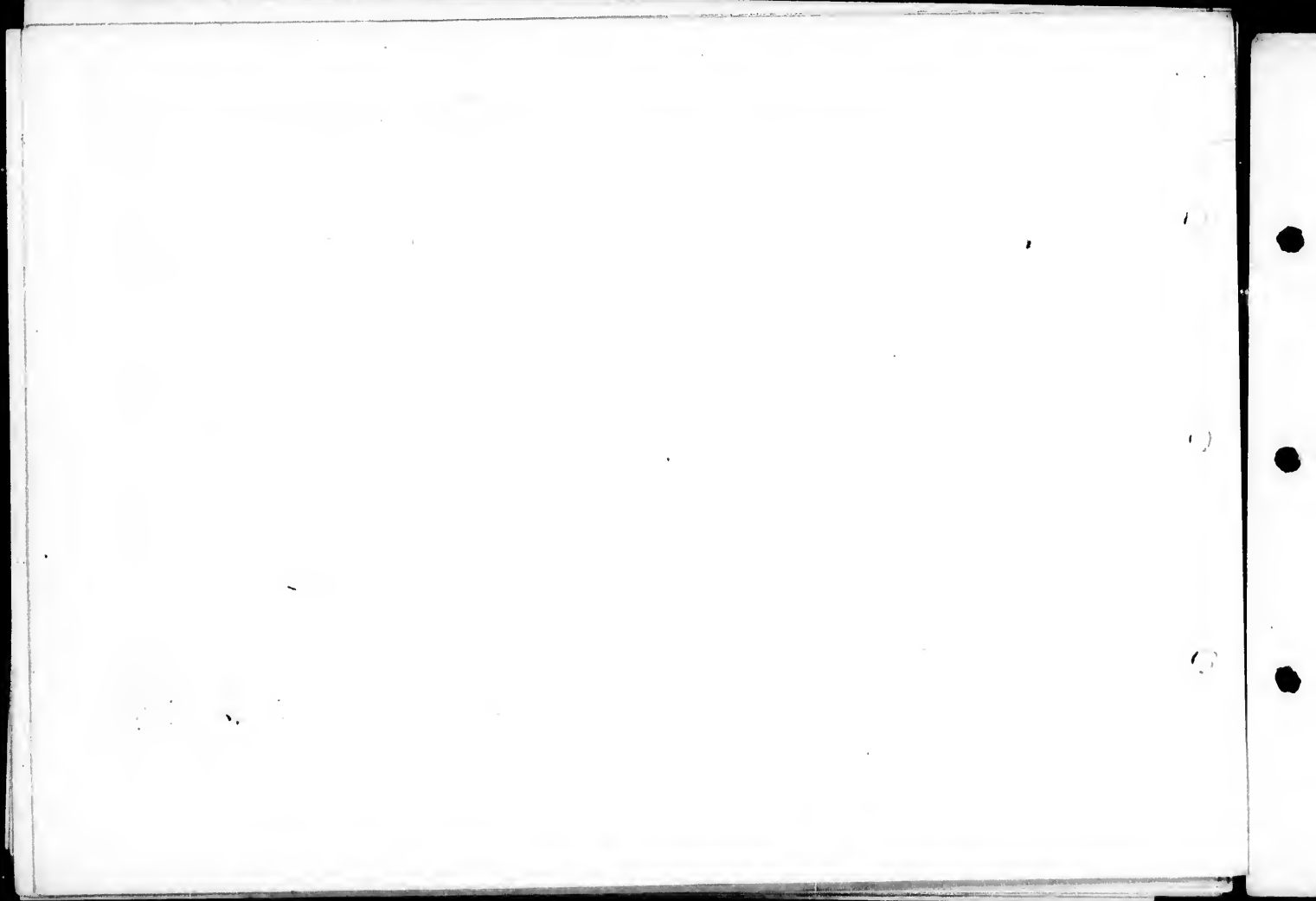
BRITISH COLUMBIA STRAWBERRIES.

BRITISH COLUMBIA INDIANS.





VIEW OF FRASER RIVER FROM PROSPECT PARK, NEW WESTMINSTER, B. C.





NEW WESTMINSTER, B. C.

