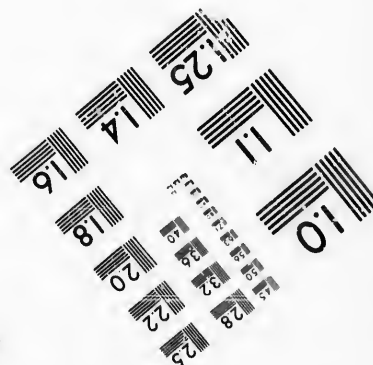
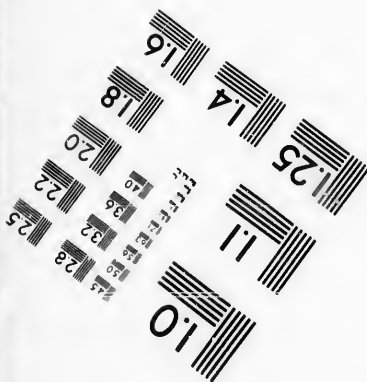
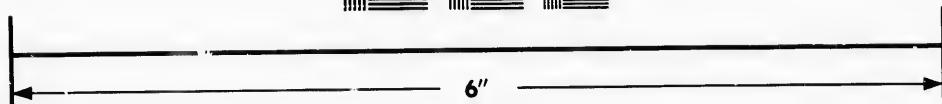
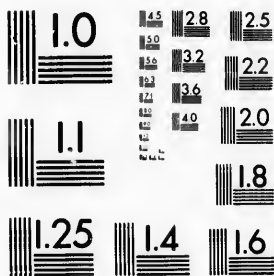


**IMAGE EVALUATION
TEST TARGET (MT-3)**



**Photographic
Sciences
Corporation**

23 WEST MAIN STREET
WEBSTER, N.Y. 14580
(716) 872-4503

1.5 12.8
2.0 13.2
2.5 13.6
2.2
2.0
1.8

**CIHM/ICMH
Microfiche
Series.**

**CIHM/ICMH
Collection de
microfiches.**



Canadian Institute for Historical Microreproductions / Institut canadien de microreproductions historiques

1.0
1.5
2.0

© 1987

Technical and Bibliographic Notes/Notes techniques et bibliographiques

The Institute has attempted to obtain the best original copy available for filming. Features of this copy which may be bibliographically unique, which may alter any of the images in the reproduction, or which may significantly change the usual method of filming, are checked below.

L'Institut a microfilmé le meilleur exemplaire qu'il lui a été possible de se procurer. Les détails de cet exemplaire qui sont peut-être uniques du point de vue bibliographique, qui peuvent modifier une image reproduite, ou qui peuvent exiger une modification dans la méthode normale de filmage sont indiqués ci-dessous.

- Coloured covers/
Couverture de couleur
- Covers damaged/
Couverture endommagée
- Covers restored and/or laminated/
Couverture restaurée et/ou pelliculée
- Cover title missing/
Le titre de couverture manque
- Coloured maps/
Cartes géographiques en couleur
- Coloured ink (i.e. other than blue or black)/
Encre de couleur (i.e. autre que bleue ou noire)
- Coloured plates and/or illustrations/
Planches et/ou illustrations en couleur
- Bound with other material/
Relié avec d'autres documents
- Tight binding may cause shadows or distortion
along interior margin/
La reliure serrée peut causer de l'ombre ou de la
distorsion le long de la marge intérieure
- Blank leaves added during restoration may
appear within the text. Whenever possible, these
have been omitted from filming/
Il se peut que certaines pages blanches ajoutées
lors d'une restauration apparaissent dans le texte,
mais, lorsque cela était possible, ces pages n'ont
pas été filmées.
- Additional comments: / [Printed ephemera] [3] p.
Commentaires supplémentaires:

- Coloured pages/
Pages de couleur
- Pages damaged/
Pages endommagées
- Pages restored and/or laminated/
Pages restaurées et/ou pelliculées
- Pages discoloured, stained or foxed/
Pages décolorées, tachetées ou piquées
- Pages detached/
Pages détachées
- Showthrough/
Transparence
- Quality of print varies/
Qualité inégale de l'impression
- Includes supplementary material/
Comprend du matériel supplémentaire
- Only edition available/
Seule édition disponible
- Pages wholly or partially obscured by errata
slips, tissues, etc., have been refilmed to
ensure the best possible image/
Les pages totalement ou partiellement
obscurcies par un feuillet d'errata, une pelure,
etc., ont été filmées à nouveau de façon à
obtenir la meilleure image possible.

This item is filmed at the reduction ratio checked below/
Ce document est filmé au taux de réduction indiqué ci-dessous.

10X	12X	14X	16X	18X	20X	22X	24X	26X	28X	30X	32X
					/						

The copy filmed here has been reproduced thanks to the generosity of:

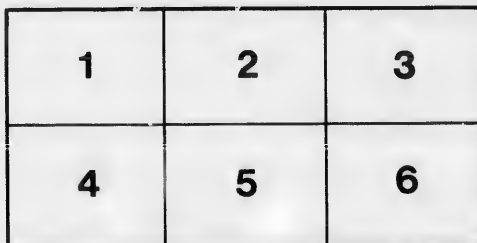
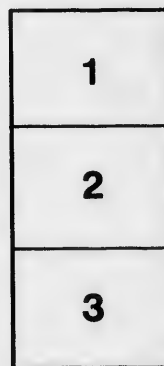
New Brunswick Museum
Saint John

The images appearing here are the best quality possible considering the condition and legibility of the original copy and in keeping with the filming contract specifications.

Original copies in printed paper covers are filmed beginning with the front cover and ending on the last page with a printed or illustrated impression, or the back cover when appropriate. All other original copies are filmed beginning on the first page with a printed or illustrated impression, and ending on the last page with a printed or illustrated impression.

The last recorded frame on each microfiche shall contain the symbol \rightarrow (meaning "CONTINUED"), or the symbol ∇ (meaning "END"), whichever applies.

Maps, plates, charts, etc., may be filmed at different reduction ratios. Those too large to be entirely included in one exposure are filmed beginning in the upper left hand corner, left to right and top to bottom, as many frames as required. The following diagrams illustrate the method:



L'exemplaire filmé fut reproduit grâce à la générosité de:

New Brunswick Museum
Saint John

Les images suivantes ont été reproduites avec le plus grand soin, compte tenu de la condition et de la netteté de l'exemplaire filmé, et en conformité avec les conditions du contrat de filmage.

Les exemplaires originaux dont la couverture en papier est imprimée sont filmés en commençant par le premier plat et en terminant soit par la dernière page qui comporte une empreinte d'impression ou d'illustration, soit par le second plat, selon le cas. Tous les autres exemplaires originaux sont filmés en commençant par la première page qui comporte une empreinte d'impression ou d'illustration et en terminant par la dernière page qui comporte une telle empreinte.

Un des symboles suivants apparaîtra sur la dernière image de chaque microfiche, selon le cas: le symbole \rightarrow signifie "A SUIVRE", le symbole ∇ signifie "FIN".

Les cartes, planches, tableaux, etc., peuvent être filmés à des taux de réduction différents. Lorsque le document est trop grand pour être reproduit en un seul cliché, il est filmé à partir de l'angle supérieur gauche, de gauche à droite, et de haut en bas, en prenant le nombre d'images nécessaire. Les diagrammes suivants illustrent la méthode.



HISTORY OF SAINT JOHN.

The President and Directors of the Saint John Mechanics' Institute offer a PRIZE of One Hundred Dollars to the Writer of the best-Essay on **The History of the City and County of Saint John**. If deemed advisable, a second Prize of not more than Fifty Dollars will be given to the Writer of the second best Essay on the same subject.

All matters connected with the Essays, or awarding Prizes, are to be under the control of "The Prize Essay Committee."

Persons intending to compete, are requested to hand in their names to the Chairman of the Committee by the 1st September next; and no Prize will be given unless there are at least three Competitors

Essays must be handed in before the 1st day of November, 1871.

Two persons are to be chosen by the Committee to act as Judges, with power to select a third; and any two of such Judges may decide as to the respective merits of the Essays.

The Writer of each Essay is to subscribe the same with some motto, or fictitious name, enclosing a copy with his own name subscribed, in a sealed envelope, to be placed in the hands of the Chairman of the Committee. Each Essay to be written in a legible hand, and with a margin.

The Committee expect all information furnished by each Writer to be of the most accurate character: and in case of reference to any unpublished document, such document shall if possible accompany the Essay. If such document cannot be procured, the writer of the Essay shall furnish a certified copy of the same, or of such extracts as concern the subject, and shall state where the original may be seen.

All the Essays are to be the property of the Institute, subject to the right of publication by the writers.

The Writers are desired to furnish particulars as to the following matters, and in the following order, as nearly as possible:

1st.—As to the order in priority of time when the City and the different sections of the City and County were settled, and by what persons; of what nationality, and under what circumstances.

2nd.—As to the ownership of Lands, and the occupancy of Civic and other Offices, in order of time; with Biographical Sketches of prominent citizens and inhabitants of the County.

3rd.—As to the population and census from the earliest period, and with regard to nationality, and the formation and growth of religious denominations.

4th.—As to the origin, course and growth of Commerce and Manufactures, and the progress of Agriculture, with Statistics and Statistical Observations as to Shipping, Exports and Imports, Trade Returns of all kinds, Manufactures and Staples; and generally with reference to Commercial, Fiscal, Mechanical and Agricultural matters of all kinds.

5th.—As to the establishment and growth of Banking and all other Joint Stock operations; and of Associations for the advancement of Trade, Mechanics, Agriculture, Science and Letters.



6th.—As to the History of the Press, with as complete a list of Newspapers, Magazines, and Literary productions of all kinds as can be procured, with the names of Editors and Publishers.

7th.—As to Meteorology and change of Climate.

8th.—As to the opening of Roads, and as to the means of communication by steam or otherwise between the different sections of the County, and between the County and other sections of the Province and other parts of the world.

9th.—As to like Postal and Telegraph communication.

10th.—As to Social Progress and Domestic Economy.

11th.—Leading Incidents of History, political or otherwise.

Information of any kind connected with the principal subject, and not specified under the above heads, will be gladly received, and meet with due consideration; and the Writers are not to consider themselves bound to treat the different subjects in the order here stated, though for convenience the Committee think it desirable that they should do so as far as possible.

I. ALLEN JACK, *Chairman,*
SILAS ALWARD,
EDWARD WILLIS,
GILBERT MURDOCK,
JOHN McMILLAN, } *Prize Essay Com.*

JULY, 1870.

