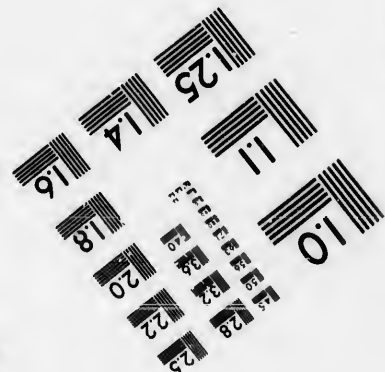
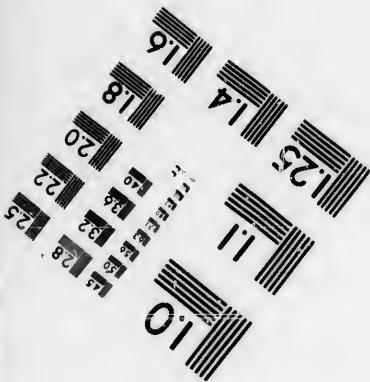
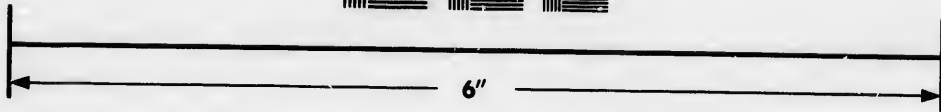
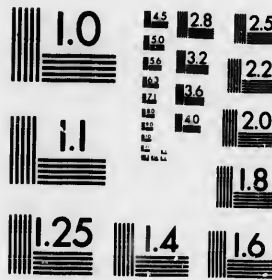


**IMAGE EVALUATION
TEST TARGET (MT-3)**



**Photographic
Sciences
Corporation**

23 WEST MAIN STREET
WEBSTER, N.Y. 14580
(716) 872-4503

28
32
36
40
2.2
2.0
1.8

**CIHM/ICMH
Microfiche
Series.**

**CIHM/ICMH
Collection de
microfiches.**



Canadian Institute for Historical Microreproductions / Institut canadien de microreproductions historiques

11
10
01

© 1986

Technical and Bibliographic Notes/Notes techniques et bibliographiques

The Institute has attempted to obtain the best original copy available for filming. Features of this copy which may be bibliographically unique, which may alter any of the images in the reproduction, or which may significantly change the usual method of filming, are checked below.

L'Institut a microfilmé le meilleur exemplaire qu'il lui a été possible de se procurer. Les détails de cet exemplaire qui sont peut-être uniques du point de vue bibliographique, qui peuvent modifier une image reproduite, ou qui peuvent exiger une modification dans la méthode normale de filmage sont indiqués ci-dessous.

- | | |
|--|--|
| <input checked="" type="checkbox"/> Coloured covers/
Couverture de couleur | <input type="checkbox"/> Coloured pages/
Pages de couleur |
| <input type="checkbox"/> Covers damaged/
Couverture endommagée | <input type="checkbox"/> Pages damaged/
Pages endommagées |
| <input type="checkbox"/> Covers restored and/or laminated/
Couverture restaurée et/ou pelliculée | <input type="checkbox"/> Pages restored and/or laminated/
Pages restaurées et/ou pelliculées |
| <input type="checkbox"/> Cover title missing/
Le titre de couverture manque | <input checked="" type="checkbox"/> Pages discoloured, stained or foxed/
Pages décolorées, tachetées ou piquées |
| <input type="checkbox"/> Coloured maps/
Cartes géographiques en couleur | <input type="checkbox"/> Pages detached/
Pages détachées |
| <input type="checkbox"/> Coloured ink (i.e. other than blue or black)/
Encre de couleur (i.e. autre que bleue ou noire) | <input checked="" type="checkbox"/> Showthrough/
Transparence |
| <input type="checkbox"/> Coloured plates and/or illustrations/
Planches et/ou illustrations en couleur | <input type="checkbox"/> Quality of print varies/
Qualité inégale de l'impression |
| <input type="checkbox"/> Bound with other material/
Relié avec d'autres documents | <input type="checkbox"/> Includes supplementary material/
Comprend du matériel supplémentaire |
| <input type="checkbox"/> Tight binding may cause shadows or distortion
along interior margin/
La reliure serrée peut causer de l'ombre ou de la
distorsion le long de la marge intérieure | <input type="checkbox"/> Only edition available/
Seule édition disponible |
| <input type="checkbox"/> Blank leaves added during restoration may
appear within the text. Whenever possible, these
have been omitted from filming/
Il se peut que certaines pages blanches ajoutées
lors d'une restauration apparaissent dans le texte,
mais, lorsque cela était possible, ces pages n'ont
pas été filmées. | <input type="checkbox"/> Pages wholly or partially obscured by errata
slips, tissues, etc., have been refilmed to
ensure the best possible image/
Les pages totalement ou partiellement
obscurcies par un feuillet d'errata, une pelure,
etc., ont été filmées à nouveau de façon à
obtenir la meilleure image possible. |
| <input type="checkbox"/> Additional comments:
Commentaires supplémentaires: | |

This item is filmed at the reduction ratio checked below/
Ce document est filmé au taux de réduction indiqué ci-dessous.

10X	14X	18X	22X	26X	30X
<input type="checkbox"/>	<input type="checkbox"/>	<input type="checkbox"/>	<input checked="" type="checkbox"/>	<input type="checkbox"/>	<input type="checkbox"/>
12X	16X	20X	24X	28X	32X

The copy filmed here has been reproduced thanks to the generosity of:

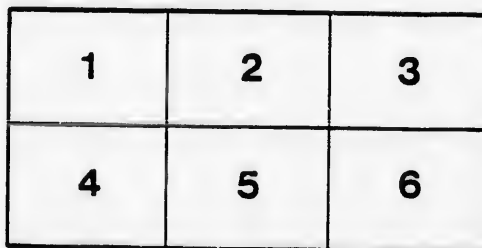
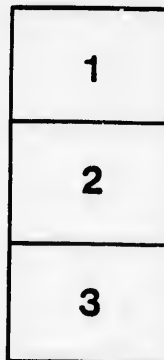
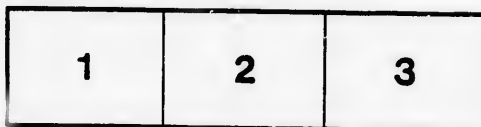
D. B. Weldon Library
University of Western Ontario
(Regional History Room)

The images appearing here are the best quality possible considering the condition and legibility of the original copy and in keeping with the filming contract specifications.

Original copies in printed paper covers are filmed beginning with the front cover and ending on the last page with a printed or illustrated impression, or the back cover when appropriate. All other original copies are filmed beginning on the first page with a printed or illustrated impression, and ending on the last page with a printed or illustrated impression.

The last recorded frame on each microfiche shall contain the symbol \rightarrow (meaning "CONTINUED"), or the symbol ∇ (meaning "END"), whichever applies.

Maps, plates, charts, etc., may be filmed at different reduction ratios. Those too large to be entirely included in one exposure are filmed beginning in the upper left corner, left to right and top to bottom, as many frames as required. The following diagrams illustrate the method:



L'exemplaire filmé fut reproduit grâce à la générosité de:

D. B. Weldon Library
University of Western Ontario
(Regional History Room)

Les images suivantes ont été reproduites avec le plus grand soin, compte tenu de la condition et de la netteté de l'exemplaire filmé, et en conformité avec les conditions du contrat de filmage.

Les exemplaires originaux dont la couverture en papier est imprimée sont filmés en commençant par le premier plat et en terminant soit par la dernière page qui comporte une empreinte d'impression ou d'illustration, soit par le second plat, selon le cas. Tous les autres exemplaires originaux sont filmés en commençant par la première page qui comporte une empreinte d'impression ou d'illustration et en terminant par la dernière page qui comporte une telle empreinte.

Un des symboles suivants apparaîtra sur la dernière image de chaque microfiche, selon le cas: le symbole \rightarrow signifie "A SUIVRE", le symbole ∇ signifie "FIN".

Les cartes, planches, tableaux, etc., peuvent être filmés à des taux de réduction différents. Lorsque le document est trop grand pour être reproduit en un seul cliché, il est filmé à partir de l'angle supérieur gauche, de gauche à droite, et de haut en bas, en prenant le nombre d'images nécessaire. Les diagrammes suivants illustrent la méthode.

Ingersoll Foundry & Agricultural Works.

ESTABLISHED 1857

JOHN RUSSELL & Co.

MANUFACTURERS OF

AGRICULTURAL IMPLEMENTS

SPECIALTIES:

INGERSOLL REAPERS

INGERSOLL MOWER

INGERSOLL PAPER MATH LOADERS

FIELD AND GARDEN

LAND ROLLERS, STRAW CUTTERS

PITS

SAWING

JOHN RUSSELL & Co.

Agent

OFFICE OF THE

INGERSOLL FOUNDRY

AND AGRICULTURAL WORKS.

TO OUR FARMER FRIENDS :

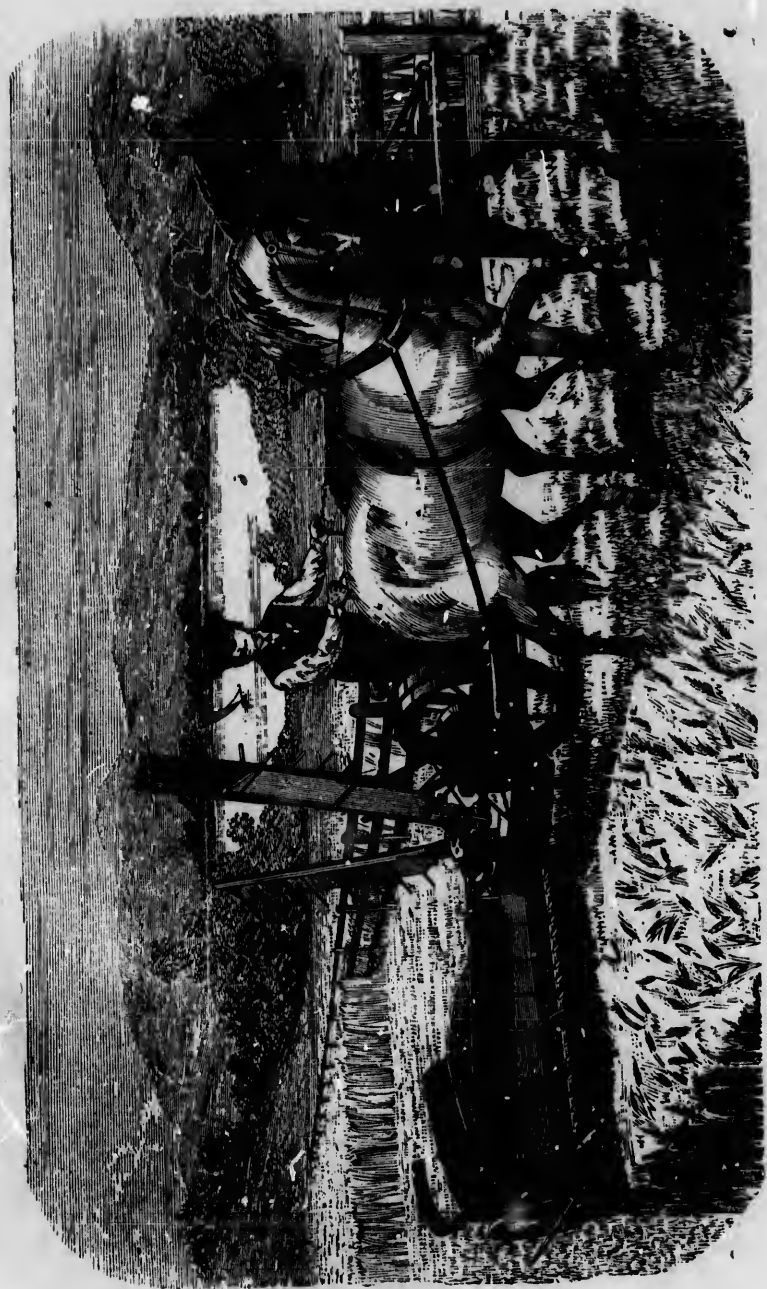
In presenting you with this, our annual Catalogue for the season of 1883, we feel that it would be needless to say anything to commend our machines to the great farming community, resting satisfied with the results achieved by them in the past season, which was the most trying on harvesting machinery known for a great many years. Notwithstanding the severity, our machines have given entire satisfaction, and gained for us the approbation of all those who have purchased them.

Living in an age of progress we have taken advantage of all the new improvements which we think would be beneficial to our machines, and have visited a number of the leading manufactories of the United States with that end in view, and can now say that we can supply intending purchasers with an implement of whatever kind we build that will be second to none in the Dominion.

Again thanking you for your patronage so liberally extended to us in the past, we assure you our constant aim will be to merit a continuance of the same.

Yours very respectfully,

JOHN RUSSELL & CO.



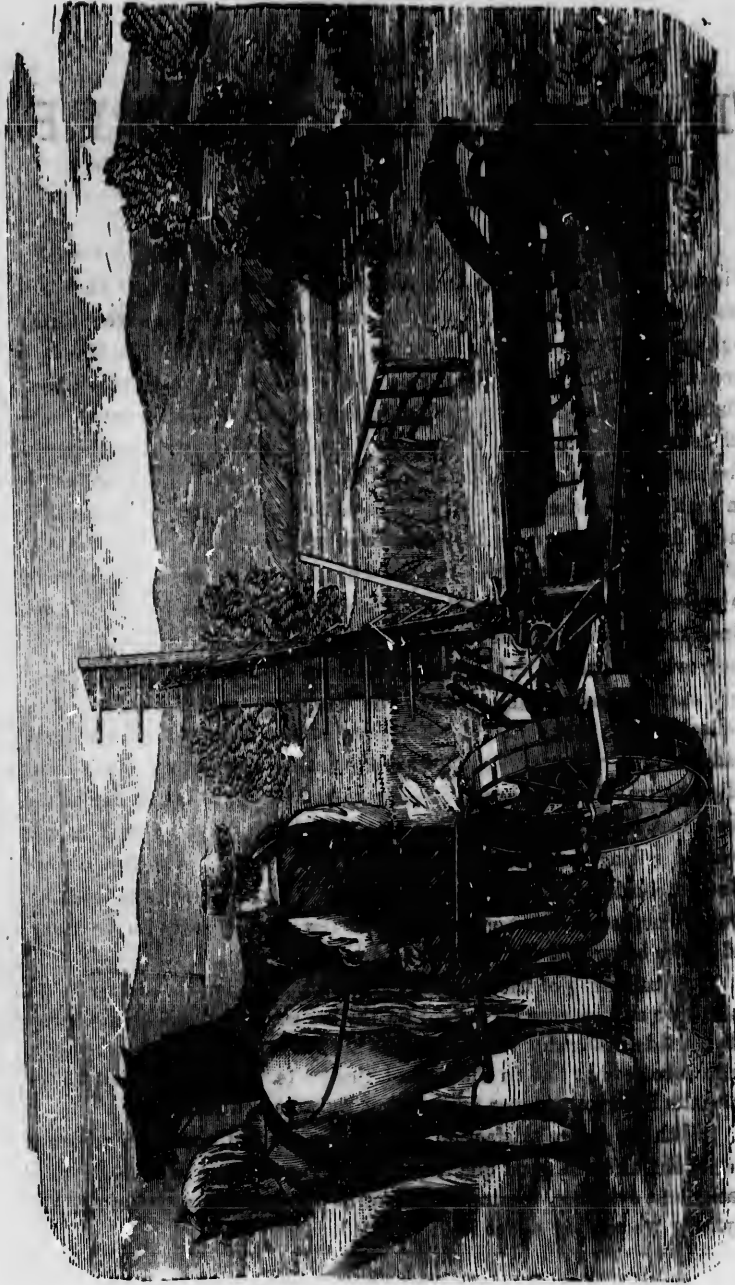
INGERSOLL REAPER—FRONT VIEW.

INGERSOLL REAPER.

The Ingersoll Reaper has been constructed and designed with a view of placing in the market an average weight machine that is a medium between the heavy machine on the one side, and the flimsy, light reaper in the opposite extreme. In this we have succeeded in producing a light Single Reaper at a price within the reach of all, combining, as it does, simplicity of construction, ease of management, with efficiency and durability. We claim the following for the Ingersoll Reaper: It has a solid frame around the drive-wheel, which is supported on each side by the main axle through the wheel: the drive-wheel is thirty-five inches in diameter, with wrought iron spokes, which are cast into the hub and rim of the wheel. The gear wheels are nicely encased to protect them from dirt and other obstructions. The rake is driven direct from the main axle by a jointed connection; this dispenses with chain wheels, and imparts a steady, uniform motion to the rake that is very easy on the working parts. The couplings are of the very best malleable iron. The rake itself is one of the simplest and strongest made, with very few pieces. It has malleable rake arms, and chilled rollers to travel on the cam: these go to make it noted for its durability. The levers for raising the in and outside of the table, as well as the lever for tilting same, are all convenient to the driver, who has a very safe and comfortable position outside of the working part of the machine, away from the rakes, where he has full view of the work to be done, and entire control of the machine and team.

The balancing of the machine is perfect, whether the driver is in his seat or not, leaving no weight on the horses necks, and doing away with all side draught. The Pitman is always in line, and has a socket, which receives the ball in the heel of the knife. All of which go to make the Ingersoll Reaper very strong, durable and reliable.

With the entire satisfaction it has given we feel confident to leave the verdict as to its good qualities with our customers who have used them, their evidence, coming as it does, is always more satisfactory than anything we can say about it.



INGERSOLL MOWER--REAR VIEW.

TESTIMONIALS.

Mount Elgin, 20th Jan., 1883.

MESSRS. JOHN RUSSELL & Co., Ingersoll.

Gents,—Having purchased one of your Ingersoll Reapers, and having put it to a very severe test last season, my grain being very heavy, I take great pleasure in recommending it to farmers who are in need of a light, durable machine, as the one they ought to have.

Yours respectfully,

WM. FEWSTER,

North Norwich, lot 28, con. 4.

Dorchester, Jan. 29th, 1883.

MESSRS. JOHN RUSSELL & Co., Ingersoll.

Dear Sirs,—Having purchased one of your Ingersoll Reapers in the harvest of 1882, I send you the following statement in regard to the working of the machine. I had commenced my harvest and on account of the roughness of the ground, was completely stuck, when I was persuaded to try one of your machines, which proved equal to the task. The only trouble I experienced was to keep my seat. I cut over 60 acres with it and had no breaks. I consider it the only machine I ever saw that could cut my grain. Hoping you may have good success with all your other Reapers,

I am, yours truly,

JAMES A. BUCHANAN.

Newark, Nov. 13th, 1882.

MESSRS. JOHN RUSSELL & Co., Ingersoll.

Gentlemen,—This is to certify that I have used one of your Ingersoll Reapers the past harvest, and found it, after a severe test to give good satisfaction. It worked especially well in lodged grain, and I can confidently recommend it to farmers as a good Reaper.

Yours, etc.,

JOHN SHEAHAN,

Lot 27, con. 6, N. $\frac{1}{2}$, North Norwich.

Thamesford, 23rd Feb., 1883.

MESSRS. JOHN RUSSELL & Co., Ingersoll.

Gents,—The Ingersoll Reaper I bought from you gives me good satisfaction. It cuts clean, makes a good sheaf, tilts with ease, simple in construction, durable and runs very light. I have cut all kinds of grain, both wet and dry, and I consider it one of the best machines made.

Yours respectfully,

ALLEN McDONALD,

Lot 7, con. 3, E. Missouri.

Ingersoll, Feb. 27th, 1883.

MESSRS. JOHN RUSSELL & Co., Ingersoll.

Gents,—Having had one of your Ingersoll Reapers cutting grain

INGERSOLL FOUNDRY,

on my farm in West Oxford, I can confidently recommend it to the farming community as being a first-class machine. It does its work well, and is easy on the horses, and I consider it one of the best machines manufactured.

Yours respectfully,

R. WILLIAMSON, West Oxford.

Drumbo, Feb. 28th, 1883.

Messrs. JOHN RUSSELL & Co., Ingersoll.

Gents,—Your letter was received, asking for a testimonial from me as to how I liked the Ingersoll Reaper I purchased from you. I am perfectly satisfied with my Reaper; it does its work well, and is easy on the horses, and I can recommend it to intending purchasers as being a first-class machine.

Yours truly,

J. K. BROWN,

Lot 23, con. 6, Blenheim.

North Oxford, Jan. 22nd, 1883.

Messrs. JOHN RUSSELL & Co., Ingersoll.

Dear Sirs,—Having bought one of your Ingersoll Reapers last year and being so well pleased with it, I think it my duty to you and the farming community to recommend it. In the first place I can cut all around the field in lodged grain and cut a wider swath than the generality of machines, and can say without any exaggeration that it is one of the best machines made. It is easily managed, gives little trouble, and is very simple in construction.

Yours very truly,

G. A. UREN,

Lots 16 and 17, con. 3, North Oxford.

Mossley, Jan. 22nd, 1883.

Messrs. JOHN RUSSELL & Co., Ingersoll.

Gentlemen,—The Ingersoll Reaper I bought from you last year has given me entire satisfaction. It is light of draught and easy to manage and I consider it is one of the best in the market. I can cheerfully recommend it to any of my neighbors in want of a first-class machine.

Yours truly,

GEO. MASTERMAN, North Dorchester.

Thamesford, Jan. 30th, 1883.

Messrs. JOHN RUSSELL & Co., Ingersoll.

Dear Sirs,—The Reaper that I bought of you works to my entire satisfaction.

Yours truly,

DAVID ROSS,

Lot 8, con. 9, East Missouri.

North Oxford, Nov. 16th. 1882.

Messrs. JOHN RUSSELL & Co., Ingersoll.

Gents,—The Ingersoll Reaper I purchased from you has given me entire satisfaction. It did its work first-rate. It is easy to handle and suits me in every respect. I cannot see how or where it can be excelled in doing good work and leaving a good sheaf.

Yours truly,

JOHN GUNN.

Mount Elgin, Nov. 5th, 1882.

Messrs. JOHN RUSSELL & Co., Ingersoll.

Gents,—Enclosed please find cash for the Reaping Machine purchased from you, and I would also say I never paid for anything in the implement line that has given me the same satisfaction. I think I had the worst crop to cut that ever grew; it was so fearfully long and tangled, especially the fall wheat and oats, which gave the Reaper a very severe test. All who saw it work were convinced that it delivered the best sheaf to bind they ever put a band around. Before buying yours I looked at a number of other Reapers, and listened to a great many plausible stories, but I liked the Ingersoll Reaper the best on account of its simplicity and strength, and now, having used it I can heartily recommend it to all persons who are wanting a first-class machine.

Yours respectfully,

DANIEL TRIPP.

North Oxford, Nov. 10th, 1882.

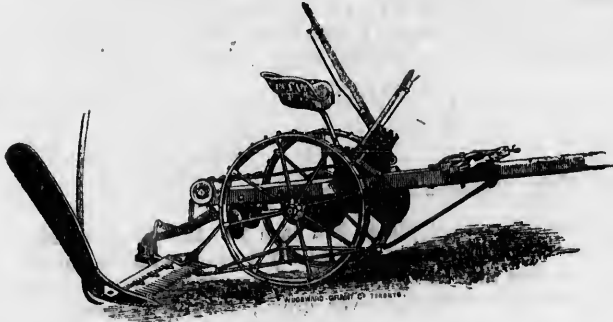
Messrs. JOHN RUSSELL & Co., Ingersoll.

Gentlemen,—I have cut all my grain crop, and some of it was very bad to cut. With the Ingersoll Reaper I bought of you I find it a strong, durable, smooth cutting machine. It is very light in draft and easily handled. I think your lifters are just right, and what every machine should have so as to save time in adjusting the machine to the ground you are cutting over. What I most admire in the Ingersoll Reaper is the straight way it leaves the sheaf for the binder. I did not have a minutes lost time tinkering at the machine from the start, and I trust you may always be as successful in everything you make as you are in the Ingersoll Reaper.

Yours truly,

THOMAS RENTON.

THE INGERSOLL MOWER



Is modeled after one of the leading mowers of the United States, and we have no hesitation in saying that with the changes we have made in its construction, there is no better Mower built. It being a rear cut gives it all the more advantage as a first-class Mower.

The Advantages of a Rear-Cut Mower are :

The driver sees an obstacle in time to avoid it.

The turning at the corners is rendered easy : the finger-bar swings back from the grass, so that the start is free ; all the additional power required to cut bad grass is applied directly upon the driving wheels, and increases its cutting capacity. With a rear-cutting machine there is no burden or weight on the horses necks when at work, or the cutter badly folded. Its Pitman connections are the most durable now made. The finger-bar is attached to a tilting drag-bar by a very simple and strong device, which enables the driver to regulate the height of cut perfectly over smooth, rough or stony ground, while in motion, with the greatest of ease. The main frame of the machine is made of wrought iron, and all such parts as are liable to any strain are either of wrought or malleable iron, which makes it one of the strongest Mowers now built.

We also use a two and a-half inch section, which has proved itself to be a great improvement on rough or stony ground, and works equally well on smooth ground. Width of cut, four feet two inches.

JOHN RUSSELL & CO.

The Meadow Lark Improved Single Mower.

Famous for its Wonderful Simplicity and Efficiency.

The cutting apparatus, Pitman, shoes, and arrangements for raising the bar are most complete, the gearing is neatly encased, it is a fitting companion for the renowned Ingersoll Single Reaper. Weight on the scales ready for operation, five hundred and ninety pounds.



MEADOW LARK MOWER,

A LIGHT DURABLE MOWER, WITH CAST FRAME.

LIGHT, DURABLE & SIMPLE.

The Greatest LABOR-SAVING Machine
OF THE AGE.



BROWN'S PATENT HAY-LOADER.

LOADS A TON OF HAY IN FIVE MINUTES.

Brown's Patent Hay-Loader.

Since the first introduction of the Loader, each succeeding year has added new evidence of the practicability of it, and shows conclusively the necessity for pitching hay on the waggon in the field by machinery.

All other work in hay-making has been done by machinery for a long time, leaving the pitching on the waggon the only part accomplished in the same manner and with no greater speed than during the earliest period of hay-making, with the use of the Loader as much time is saved in pitching as is saved by the Mower, Horse-Rake, Horse Fork or Hay Carrier, thereby making it safe for the farmer to cut at least double the amount of grass daily, knowing he has the facilities for securing it.

The following are some of the Advantages of the Loader:

1st. It requires no extra men or horses to work it, it being attached to the rear of the waggon and operated by the same team that draws the load, adding to the draft when in operation only the power of one man.

2nd. It has no violent motion or side draft when in operation, and, being strongly built, will not wear out in a life time. Attaching to and detaching from the waggon is but the work of a moment.

3rd. No fixed number of persons is required to operate the Loader, but it may be handled by one, two or three to suit the circumstances, in fact, the speed of the Loader is only limited by the ability of the men on the waggon to place the hay.

4th. Although originally intended to run on hay raked in windrow, it may be used in heavy unraked hay, or hay in cocks, and all kinds of loose grain, and on all ordinary meadow land.

5th. Its extraordinary capacity for elevating hay, a ton in three minutes, affords facility for securing hay which, under the old style of hand labor in showery weather, would frequently be lost. The saving of actual labor in pitching hay on the waggon in the meadow is enough

in itself to pay every farmer, who cuts any amount of hay, for purchasing a Loader, the pitching on being now the slowest and hardest part of hay-making. But the saving of labor is not the greatest saving made; it is the securing of hay when ready for the barn or stack before it is damaged by rain. If a farmer has twelve loads cured ready for the barn, and can by hand secure but one-half of it during the day, the other half must remain and take chances of getting wet, and may be utterly ruined before the weather allows of its being drawn in. With the aid of the Loader the same help that drew in the six loads could have secured the whole twelve, thereby saving six loads. We assert there is no implement used in hay-making except, perhaps, the Horse-Rake, which actually saves so much money as the Loader. We warrant, with the same number of hands, to put at least two loads on the waggon with the Loader while one is being put on without.

We have a wind break attachment which we furnish with each Loader, which is a valuable improvement, and adds greatly to its usefulness in windy localities.

FOR QUALITY OF MATERIAL

Perfection of workmanship and superior finish, all our machines are unequalled. We invite comparison with others.

We cannot publish all the very flattering testimonials received by us from our many customers. We only give a few of them to let you see how our machines are appreciated through the country, and in every case have surprised and delighted the owners.

READ A FEW OF THEM.

Yours truly,

JOHN RUSSELL & CO.

A FEW
TESTIMONIALS

REFERRING TO

Brown's Patent Hay Loader !

That Speak for Themselves.

I have worked one of your Hay-Loaders for the past two seasons. It saves time, and the hay is in much better condition. I consider that to every farmer having anything approaching a large quantity of hay it is an indispensable article. I have never worked the machine to its full capacity, but am certain that with men and waggons to handle the hay, from twenty-five to thirty loads can be put on with one in an afternoon.

Putnam, May 28th, 1881.

J. FRED. CHOATE.

Enclosed you will find cheque in payment of Hay-Loader, which I trust will be satisfactory. I am very much pleased to state that the Hay-Loader has given universal satisfaction. I would like to have an agency for the County of Halton, and think I can sell some for you during another season.

Milton, July 7th, 1881.

E. DIXON.

I have used your Hay-Loader for the last five years, and am well pleased with it. I would not be without one now, as it saves a great deal of hard work. I can load one ton of hay in five minutes with it. It works well and is not liable to get out of order. Every farmer should have one.

Mt. Elgin, Jan. 2, 1882.

WILLIAM HARRIS.

I am perfectly satisfied with the Hay-Loader; it does its work quick and well.

Westminister, June 6th, 1881.

JAMES EAGAN.

I like the Hay-Loader very much; it saves a lot of hard work. I have used mine for five seasons, and would not do without it now.

Dorchester Station, Dec. 29th, 1881.

J. B. LANE.

The Hay-Loader gives entire satisfaction, and I can highly recommend it to every farmer. I have loaded about 100 tons of hay this season, and can keep from two to four men busy on the load. It works in every respect very satisfactory.

Rosemont, Dec. 3rd, 1881.

THOMAS ALLAN.

In answer to your letter in regard to Hay-Loader, I would say that I am well pleased with it. It saves so much hard work in the field that I believe I have almost forgotten how to pitch hay. Every farmer should have one. It will in many cases save the cost in one year.

Brownsville, Jan. 2nd, 1882.

E. B. BROWN.

Barton, Aug. 8th, 1882.

Messrs. JOHN RUSSELL & Co., Ingersoll.

Gents,—Having used one of your patent Hay-Loaders, during the present season, I can heartily recommend it to all who wish to save time and labor when both are at their greatest value. I would not be without it for ten times its cost. Yours, &c.,

PETER FILMAN, Lot 16, Con. 7, Barton.

WELLAND COUNTY ONT., Aug. 26, 1882.

JOHN RUSSELL & Co., Ingersoll, Ont.

Gentlemen.—Yours of the 22nd to hand, contents noted. In reply we beg to say that the Hay-Loader we ordered of you, for James Sharpe, Montross P. O., Crowland, Township, in this County, gives perfect satisfaction to all who have seen it work. We took the Loader to his farm, and after attaching it to his waggon we loaded several loads from the windrow and found no trouble loading a large load in three minutes. Since then it has loaded the Hay from 165 acres without any breakages. It is simple in construction and can be operated by any one, in conclusion we would say that we have been dealing in agricultural implements for years and handle all kinds of tools for farm use, and we know of none that is of more use on a hay farm than one of your Hay-Loaders. We expect from the reputation which this Loader has gained for both you and us, to sell several next season. We wish you to reserve us the County of Lincoln & Welland for next season. Wishing you every success for the ensuing year. We remain, yours truly,

GARNER & SOMERVILL.

I am well pleased with your Hay-Loader. It saves a great deal of hard work, and gives me entire satisfaction. I can cheerfully recom-

mend it to every farmer. It will save the cost of itself sometimes in one season.

St. Marys, Nov. 10th, 1881.

THOMAS WOOD.

Ancaster, Aug. 18th, 1882.

Messrs. JOHN RUSSELL & Co., Ingersoll.

Dear Sirs,—Having used one of your Patent Hay-Loaders this season I can cheerfully recommend it to the farming community as a labor saving machine. I had a field of hay near the barn and partially tested the Loader with it. We had no difficulty in loading two waggons, which were unloading with horse fork, and had plenty of time to rest. It exceeded my expectations in loading on side hills. The machine is undoubtedly built on the best of mechanical principles. Hoping you may have great success in the sale of these machines.

I remain, yours truly,

JACOB A. SHAVER,
Lot 36, Con. 4, Ancaster.

Wisbeach, Aug. 18th, 1882.

Messrs. JOHN RUSSELL & Co., Ingersoll, Ont.

Gents,—The Hay-Loader I bought from your agent, E. Maitland, of Strathroy, gave the best of satisfaction, and I consider that in a season like the last it would almost pay for itself in the saving of hay and labor, when hands were so scarce and the season so bad for hay-making, and any farmer who has any quantity of hay should not be without one.

Yours truly,

EDWIN PARKER.

Kilbride, Aug. 23rd, 1882.

Messrs. JOHN RUSSELL & Co., Ingersoll, Ont.

Dear Sirs,—I am well pleased with the Loader supplied by you, and am quite satisfied it will put on a load in five minutes. Every person who has work for it to do should have one. There is going to be a good demand for them in this part of the country another year.

Yours truly,

THOMAS AGNEW,
Lot 13, Con. 4, Nelson.

Salford, Aug. 24th, 1882.

Messrs. JOHN RUSSELL & Co., Ingersoll.

Gents,—Having purchased one of your Patent Hay-Loaders, we wish to certify to its superior merits as a labor saving machine. It has worked satisfactory in both Hay and Barley and we can heartily recommend it to intending purchasers.

Respectfully yours,

S. S. NEWTON,
W. K. NEWTON.

Youngsville, Aug. 21st, 1882.

Messrs. JOHN RUSSELL & Co., Ingersoll,

Gents,—I have used one of your Patent Hay-Loaders this season, and would not do without it. It saves two men's work, and is the cheapest hands I ever boarded.

Yours truly,

Lot 21, Con. 4, West Zorra.

JOHN YOUNGS,

Campbellford, Aug. 18th, 1882.

Messrs. JOHN RUSSELL & Co., Ingersoll.

Gents,—The Patent Hay-Loader you supplied me with has proved a complete success. It saves at least two men in hay field and more in barley, doing clean work when the hay or grain is raked into moderately small windrows. I think there will be a large number wanted in this section next year.

Yours, &c.,
W. H. WEST,
Lot 6, Con. 6, Sigmore, Northumberland Co.

Aug. 30th, 1882.

Messrs. J. RUSSELL & Co., Ingersoll.

Gents,—The Hay-Loader I purchased from your agent, W. G. Somerville, at Welland, gives me entire satisfaction. It saves a great deal of hard labor. I have taken the hay off 165 acres, and consider it fully up to my expectations. No breakage to cause any delay, easy to manage. Would highly recommend it to any brother farmer having a quantity of hay to handle, or a few neighbors to buy together, it will pay them. Wishing you entire success with your Hay-Loader.

Respectfully yours,
JAMES SHARP,
Crowland Township, Montrose P. O.

Messrs. JOHN RUSSELL & Co.

Gentlemen,—As you wished to know how I liked your Patent Hay-Loader. Well, it pleased me beyond my expectations. We can load a ton of hay in five minutes without any trouble, we also loaded our barley with it. I think you should call it a Hay and Barley-Loader, as it works as well in barley as in hay. Every farmer should have one. I would not sell it for any money if I could not get another.

I am yours,
JOHN GREGG,
Salford P. O., Township Dereham, Lot 10, Con. 2.

Oxford Centre, Aug. 30th, 1882.

JOHN RUSSELL & Co.

The Brown's Patent Hay-Loader I bought from you this season gives splendid satisfaction, it works well in hay. We loaded 75 acres of barley with it. It will take up as large a windrow of Barley as can be raked up with any sulkey horse rake, it will load more barley out of a windrow than 10 men can with pitch forks and take it up about as clean as can be taken up with a pitch fork.

Yours truly,
W. G. LEMON.

Kintore, Aug. 28th, 1882.

MR. J. RUSSELL.

Dear Sir,—I have used your Hay-Loader for taking up 120 loads

of hay this year Found it gave satisfaction in every respect, and would gladly recommend it to farmers as a great labor saving machine.

Yours respectfully,
JOSEPH ALDERSON,
Kintore P. O., East Nissouri, Con. 12, Lot 13.

Vandecar Aug. 19th, 1882.

Messrs. JOHN RUSSELL & Co., Ingersoll.

Gentleman,—The Hay-Loader I purchased from you worked well in both Hay and Barley, we liked it better for Barley than Hay. If we could have dry weather for gathering our crops it would become one of the necessary implements of the farm as a labor saving machine.

Yours truly,
JOHN HOLDSWORTH,
Lot 5, Con. 6, East Oxford.

Mossley, Aug. 24th, 1882.

Messrs. JOHN RUSSELL & Co., Ingersoll.

Gents,—The Patent Hay-Loader I bought from you has given me perfect satisfaction in Loading Hay and Barley and also in wheat rakings. I would recommend the raking in small windrows, then two good men can load a ton of hay in from five to ten minutes.

J. P. DUNN.

Harrington, Aug. 29th, 1882.

Messrs. JOHN RUSSELL & Co., Ingersoll.

Gents,—The Patent Hay-Loader I got from you has given me every satisfaction, and I can recommend it to the farming community as not only doing all you represented it would do, but I consider that when you have one of these machines, you save as much in having time to do all the little jobs, such as hoeing, etc., besides getting your hay in, as with it you can handle all the hay in an afternoon that you can cut and get ready for the barn.

Yours respectfully,

JAS. MATHESON,
Lot 28, Con. 2, West Zorra.

East Zorra, Aug. 17th, 1882.

Messrs. JOHN RUSSELL & Co., Ingersoll.

Gents,—The Hay-Loader supplied by you to me has given me every satisfaction, and I can recommend it to all farmers who have any quantity of hay to handle as a great labor saving machine. I have used it in my barley, and it worked fully as well as in the hay.

Yours respectfully,

GEO. MURRAY.

Thamesford, Aug. 19th, 1882.

Messrs. JOHN RUSSELL & Co., Ingersoll.

Gents,—Having purchased one of your valuable Hay-Loaders this summer I feel it my duty to recommend it to the public as a great labor

INGERSOLL FOUNDRY,

saving machine. I loaded 80 tons of hay with it together with loose wheat and barley, and it worked well giving the best satisfaction. I think any one who has a quantity of hay would do well to buy one of these machines.

Yours, &c.,

RILEY DAY,

Lot 6, Con. 8, E. Nissouri.

Guelph, Aug. 29th, 1882.

Messrs. J. RUSSELL & Co.

Dear Sirs,—We have satisfied ourselves by trial that your Hay-Loader is a practical success. It is simple, light, and strong, and can be attached to any kind of waggon. We can highly recommend it as a labor saving implement.

Yours respectfully,

WM. BROWN.

Prof. at Model Farm.

Brooksdale, Aug. 30th, 1882.

Messrs. JOHN RUSSELL & Co., Ingersoll.

Gentlemen,—The Hay-Loader I bought of you gives entire satisfaction. It does all that it was recommended to do.

Yours truly,

ORLANDO REID,

Lot 24, con. 5, West Zorra,

Hawkesbury, 11th Nov. 1882.

Messrs. JOHN RUSSELL & Co., Ingersoll.

Gents,—I have the pleasure of stating to you that I was present in a trial of your Hay-Loader on the Hon. John Hamilton's farm, county of Prescott, brought there by your agents, Messrs. Harbec & Bergeron, of Hawkesbury. It is all they represented it to be. I found it gave every satisfaction that could be desired. Had it arrived sooner I would have purchased one when I saw it tried, but I am bound to have one next season. I am certain that with the same number of hands you can handle double the quantity of hay as you could without it. It is strong and durable. I can recommend it to brother farmers.

ANTOINE LADUE, L'Original.

Hawkesbury, 11th Nov. 1882.

Messrs. JOHN RUSSELL & Co., Ingersoll.

Gents,—Your agents, Messrs. Harbec & Bergeron, of Hawkesbury village, having one of your Hay-Loaders, they wished me to give it a trial on the Hon. John Hamilton's farm, in the county of Prescott, I am happy to say it gave better satisfaction than I expected, not understanding the machine. The first few loads we had a little trouble, but after we got into working shape we put up a load in three minutes, with only two men in the waggon. Had it arrived in time I have no doubt Mr. Hamilton would have purchased it at once.

Parties present when on trial:—Jas. Brock, John Bickham, Hamilton Beggs, Wm. Park.

Yours truly,

JOHN VANKLAK, Foreman,

Alliston, Sept. 14th, 1882.

Messrs. JOHN RUSSELL & Co., Ingersoll.

DEAR SIRs,—In reply to yours desiring to know how we like the Hay-Loader, lately bought of you, would say I have tested it thoroughly. I find it to give entire satisfaction and would cheerfully recommend it to all intending to purchase one.

Yours very truly,

JOHN FLETCHER.

South Dorchester, Jan. 15th, 1883.

Messrs. JOHN RUSSELL & Co., Ingersoll.

Gents,—Having purchased one of your patent Hay-Loaders, I can cheerfully recommend it to the farmers as a great labor-saving machine. Any farmer who has any quantity of hay should have one. Take it in catchy weather it will almost pay for itself in one season. The Loader is simple and not likely to get out of order, and with reasonable care will last a lifetime. It does all that was represented of it, and I am perfectly satisfied with mine.

Yours, etc.

J. M. O'NEIL,

Lot 10, con. 7, South Dorchester, County Elgin.

Harrington, Sept. 8th, 1882.

JOHN RUSSELL & Co., Ingersoll.

Gents,—In reply to your letter asking my opinion of the Hay-Loader, I got from you this season, I have pleasure in saying that it is all that it was represented to be, and I can endorse anything that might be said in its favor; in fact I never expected to get a machine to work so complete in every way. It will put hay up as fast as any three men can load it. I had more hay this year than ever in any one year before, and never got through with it so easy. I can cheerfully recommend it to all who have any amount of hay to load.

Yours respectfully,

JOHN McCOMBS,

Lot 26, con. 2, West Zorra.

Thamesville, Sept. 7th, 1882.

Messrs. JOHN RUSSELL & Co., Ingersoll.

Gents,—I take pleasure in answering your enquiry as to how I like the Hay-Loader I purchased from you. I can recommend it to you as doing all that was represented of it. My two boys and I took in about ninety tons of hay with it, and on having once used one I could not be without it.

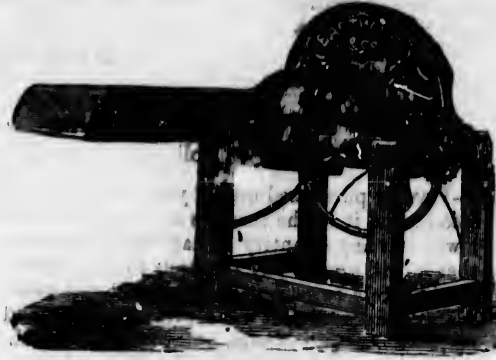
Yours truly,

JAS. DICKSON, Thamesville P.O.

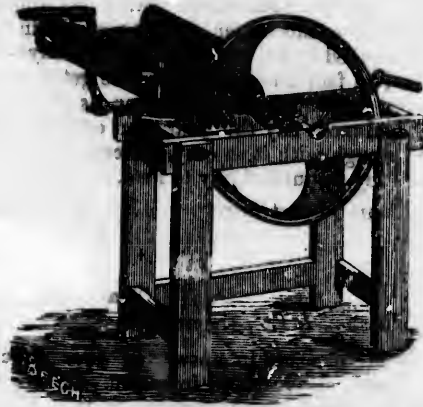
Lot 8, con. A, Camden, Kent Co.

INGERSOLL FOUNDRY,

POWER AND HAND
CUTTING BOX.

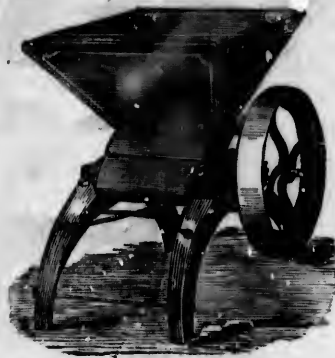


POWER AND HAND
STRAW CUTTER.



These machines are strongly built, and furnished with the best quality of English knives, cutting against a steel-laid mouth piece. The knives are fitted in the fly-wheel, and are placed and kept in contact with the mouth piece by means of set-screws. The fly-wheels are balanced so that they may be driven at a high rate of speed.

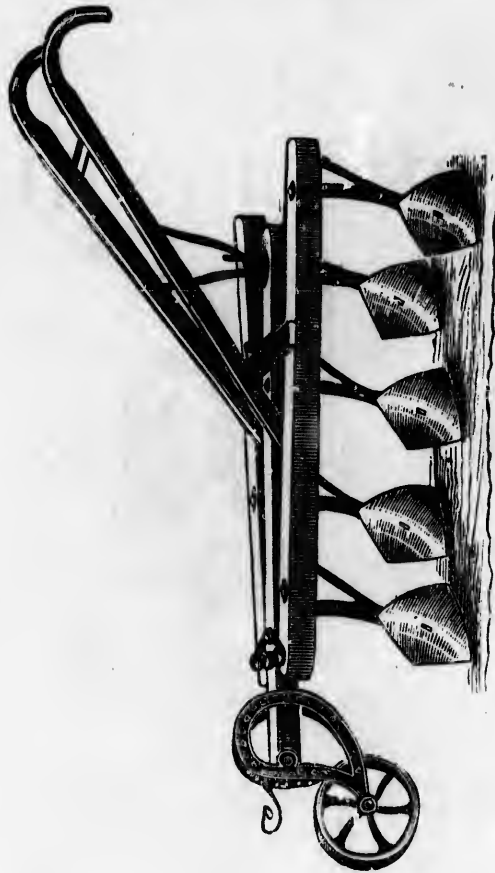
GRAIN CRUSHER.



IRON FRAME

CHOPPING MILL,

For grinding or chopping Oats, Peas, Corn, or other Grain, for feeding stock. It is mounted on a strong, substantial frame, which prevents any vibration or warping of the working parts. The rollers, when dull, can be re-cut at a trifling expense.



CORN CULTIVATOR.

CORN CULTIVATOR.

No farmer should be without one of these indispensable articles. The blades are of the best steel, and of various patterns, and can be attached to the shank of the cultivator.



These cuts represent the different patterns of the blades and can be attached to the shanks of our Corn Cultivator as desired for different classes of work.

RICHARDSON'S

CELEBRATED HORSE-POWER

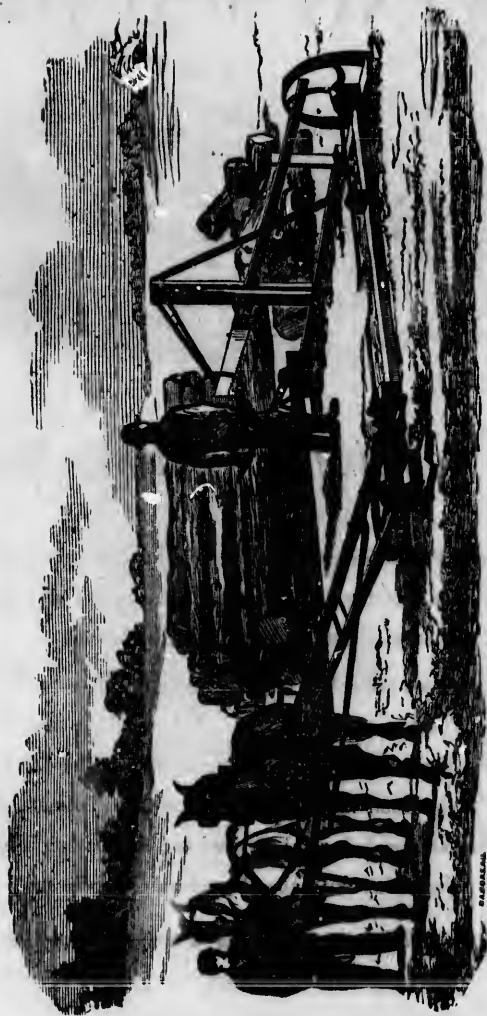
FRICTION

SAWING MACHINE

This Machine, on account of its lightness and simplicity, cheapness and durability, renders it a particular favorite among farmers. Although very light every part is made sufficiently strong, and the application of friction renders it less liable to break and more durable than any of the heavier powers. We claim that this principle of friction as applied in this power effectually guards against the breaking of cogs, or bending of saws by any sudden movement of the horses. Though never before used in horse-powers, it has proved a perfect success. Not only does it operate successfully as a Sawing Machine, it being capable of cutting about 40 cords of wood per day, but the power can be advantageously used for cutting feed, running a buzz saw or cider mill, and a variety of other uses, and with no extra expense, except a belt or tumbling-rod. It can be worked with one or two horses, as desired, though for most purposes one horse is all that is required.

RICHARDSON'S CELEBRATED HORSE-POWER
FRICTION SAWING MACHINE.

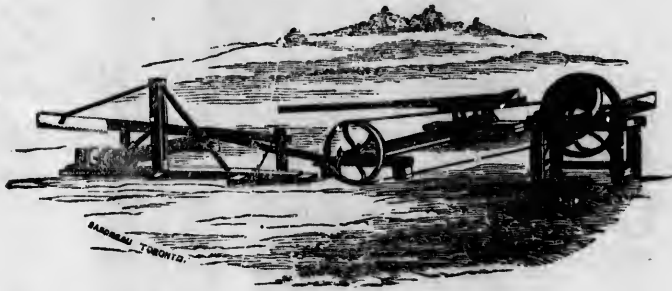
RICHARDSON



SAWING MACHINE.

INGERSOLL FOUNDRY,
COMBINATION

SAWING MACHINE



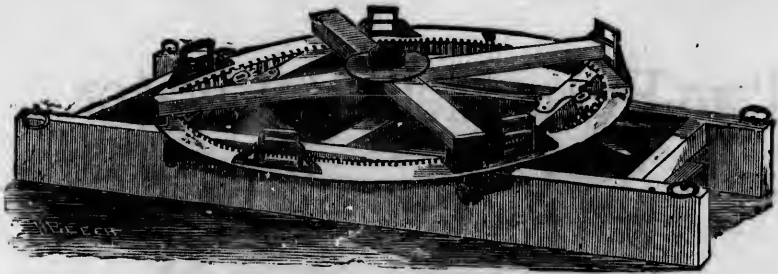
Patent Combination Sawing Machine.

This Two-Horse Power Sawing Machine which has had such an extraordinary run, is admitted on all sides to be the best Two-Horse Sawing Machine that has as yet been brought into the market.

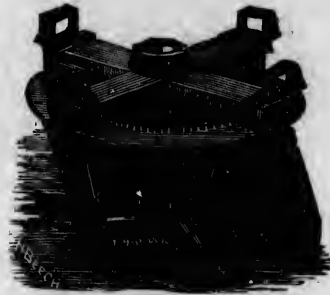
The favorite two-horse Sawing Machines previous to this one being made were the Totman & Richardson. This machine embraces all the better qualities of these two machines combined. The driving gear of this machine being much the same as that of the Totman, the driving shaft of the Richardson being substituted for the driving Pitman of the Totman, thus doing away with the obnoxious platform or pitman box

At the end of the driving-shaft is a pulley by which, with the assistance of a belt a circular saw, grain crusher, straw cutter or any other machine requiring such power can be run.

PITT'S HORSE POWER.



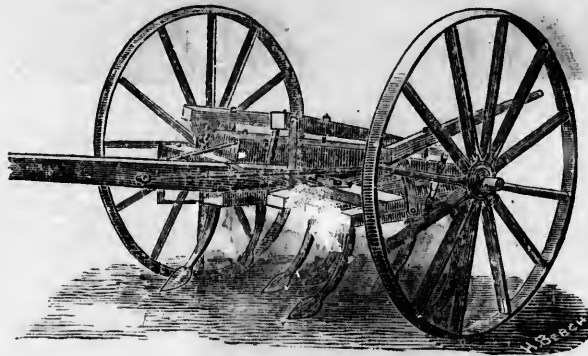
(TEN HORSE POWER)



(FOUR HORSE POWER)

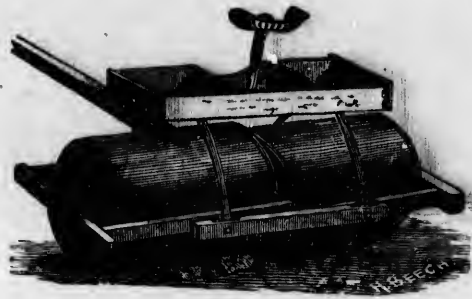
We manufacture a Four and Ten Horse Power of this pattern. This very popular power is esteemed by farmers all over the country as one of the strongest as well as the most convenient power in use.

Two-Horse Field Cultivator.



These Cultivators are constructed with three levers, so that the entire Cultivator or either side of it can be raised or lowered at the will of the operator. We invite the inspection of Farmers to these implements which are particularly adapted for cultivating on level or sloping ground.

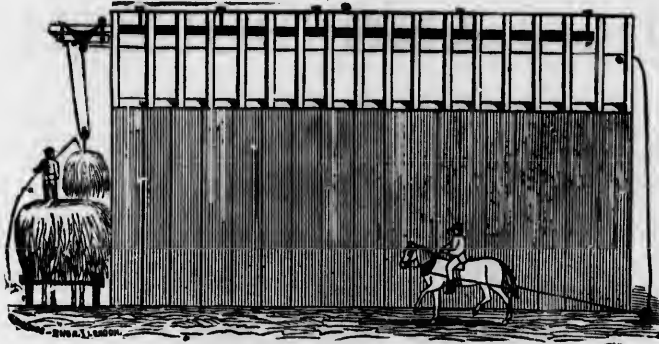
OUR LAND ROLLER.



LAND ROLLER

In order to facilitate the working of Reapers it is absolutely necessary that the land should be well rolled in spring, and the surface rendered as smooth as possible, for which purpose these rollers will be found admirably adapted. They have the best seasoned oak for staves, and weigh about thirteen hundred pounds.

Buchanan's Improved Pitching Machine.



UNLOADING FROM THE OUTSIDE.

This cut represents the Pitching Machine unloading from the outside. The farmers who use this Machine will not fail to see the benefit of filling the building from the end, saving all the room which is wasted by having a pitching place inside, or one low down on the outside which cannot be filled at all. Under our plan all the space may be occupied.



This cut represents the Fork set ready for lifting.

Sent on trial to responsible farmers. Send for Circulars and Price List to

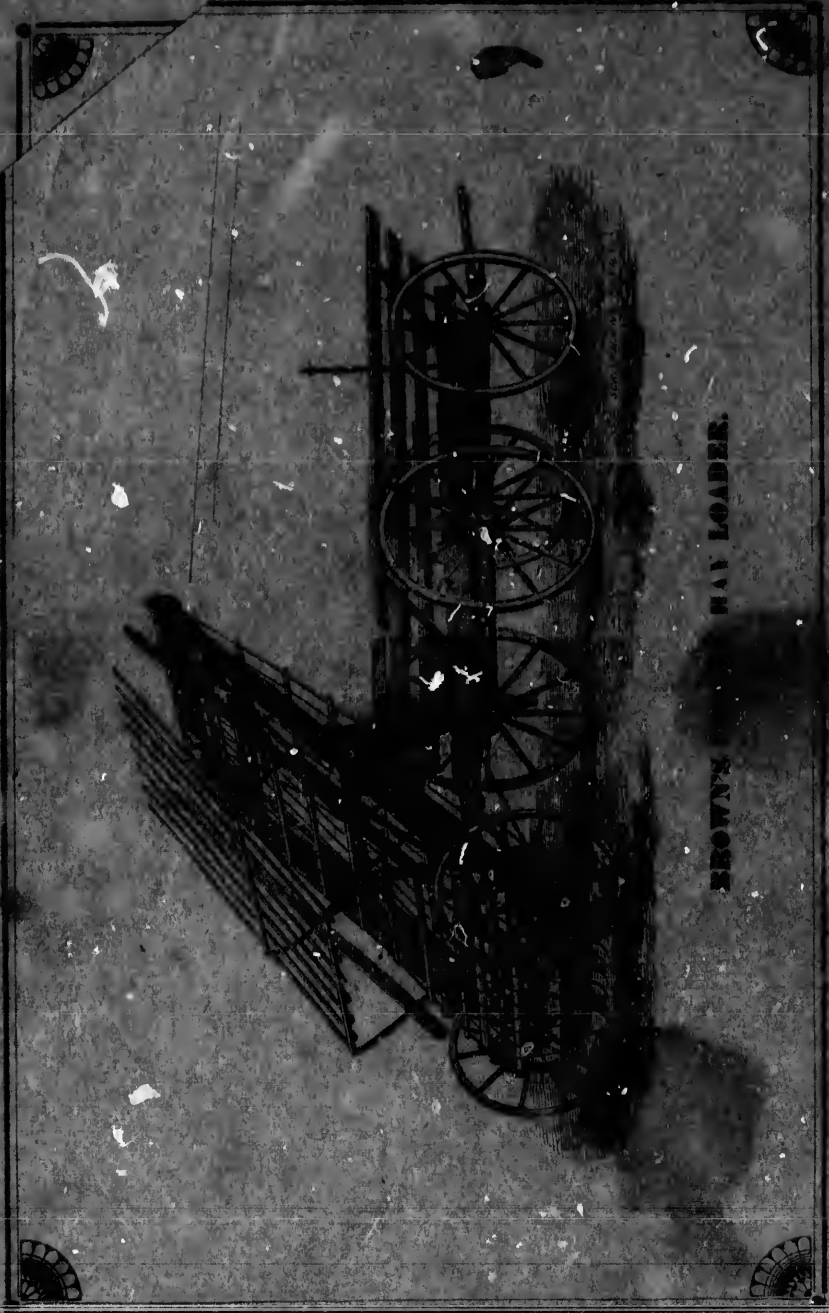
M. T. BUCHANAN, Ingersoll.

1883

Franklin D. Smith Journal

1883.

Temple B. Day Journal



BROWN'S HAY LOADER.

