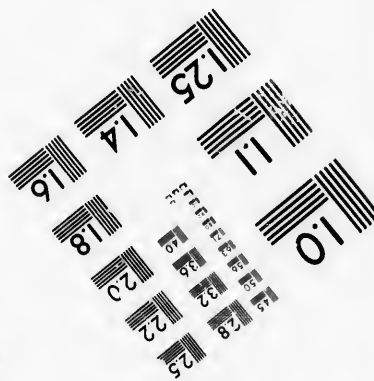
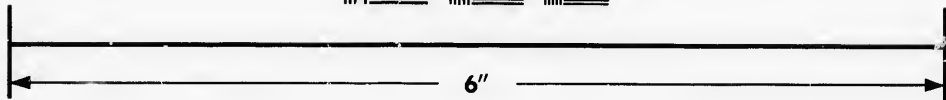
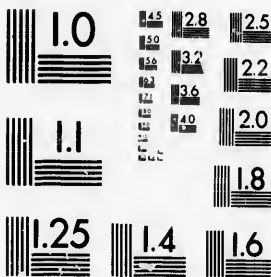


**IMAGE EVALUATION
TEST TARGET (MT-3)**



**Photographic
Sciences
Corporation**

23 WEST MAIN STREET
WEBSTER, N.Y. 14580
(716) 872-4503

**CIHM/ICMH
Microfiche
Series.**

**CIHM/ICMH
Collection de
microfiches.**



Canadian Institute for Historical Microreproductions / Institut canadien de microreproductions historiques

© 1986

Technical and Bibliographic Notes/Notes techniques et bibliographiques

The Institute has attempted to obtain the best original copy available for filming. Features of this copy which may be bibliographically unique, which may alter any of the images in the reproduction, or which may significantly change the usual method of filming, are checked below.

L'Institut a microfilmé le meilleur exemplaire qu'il lui a été possible de se procurer. Les détails de cet exemplaire qui sont peut-être uniques du point de vue bibliographique, qui peuvent modifier une image reproduite, ou qui peuvent exiger une modification dans la méthode normale de filmage sont indiqués ci-dessous.

- Coloured covers/
Couverture de couleur
- Covers damaged/
Couverture endommagée.
- Covers restored and/or laminated/
Couverture restaurée et/ou pelliculée
- Cover title missing/
Le titre de couverture manque
- Coloured maps/
Cartes géographiques en couleur
- Coloured ink (i.e. other than blue or black)/
Encre de couleur (i.e. autre que bleue ou noire)
- Coloured plates and/or illustrations/
Planches et/ou illustrations en couleur
- Bound with other material/
Relié avec d'autres documents
- Tight binding may cause shadows or distortion along interior margin/
Le reliure serrée peut causer de l'ombre ou de la distorsion le long de la marge intérieure
- Blank leaves added during restoration may appear within the text. Whenever possible, these have been omitted from filming/
Il se peut que certaines pages blanches ajoutées lors d'une restauration apparaissent dans le texte, mais, lorsque cela était possible, ces pages n'ont pas été filmées.
- Additional comments: [Printed ephemera] 1 sheet (verso blank)
Commentaires supplémentaires:

- Coloured pages/
Pages de couleur
- Pages damaged/
Pages endommagées
- Pages restored and/or laminated/
Pages restaurées et/ou pelliculées
- Pages discoloured, stained or foxed/
Pages décolorées, tachetées ou piquées
- Pages detached/
Pages détachées
- Showthrough/
Transparence
- Quality of print varies/
Qualité inégale de l'impression
- Includes supplementary material/
Comprend du matériel supplémentaire
- Only edition available/
Seule édition disponible
- Pages wholly or partially obscured by errata slips, tissues, etc., have been refilmed to ensure the best possible image/
Les pages totalement ou partiellement obscurcies par un feuillet d'errata, une pelure, etc., ont été filmées à nouveau de façon à obtenir la meilleure image possible.

This item is filmed at the reduction ratio checked below/
Ce document est filmé au taux de réduction indiqué ci-dessous.

10X	12X	14X	16X	18X	20X	22X	24X	26X	28X	30X	32X
							✓				

The copy filmed here has been reproduced thanks to the generosity of:

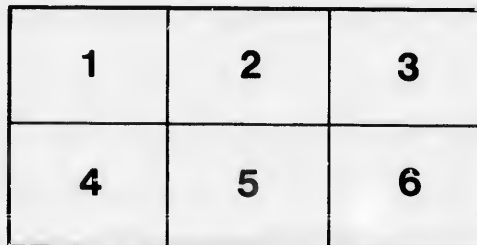
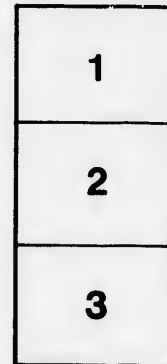
Douglas Library
Queen's University

The images appearing here are the best quality possible considering the condition and legibility of the original copy and in keeping with the filming contract specifications.

Original copies in printed paper covers are filmed beginning with the front cover and ending on the last page with a printed or illustrated impression, or the back cover when appropriate. All other original copies are filmed beginning on the first page with a printed or illustrated impression, and ending on the last page with a printed or illustrated impression.

The last recorded frame on each microfiche shall contain the symbol → (meaning "CONTINUED"), or the symbol ▼ (meaning "END"), whichever applies.

Maps, plates, charts, etc., may be filmed at different reduction ratios. Those too large to be entirely included in one exposure are filmed beginning in the upper left hand corner, left to right and top to bottom, as many frames as required. The following diagrams illustrate the method:



L'exemplaire filmé fut reproduit grâce à la générosité de:

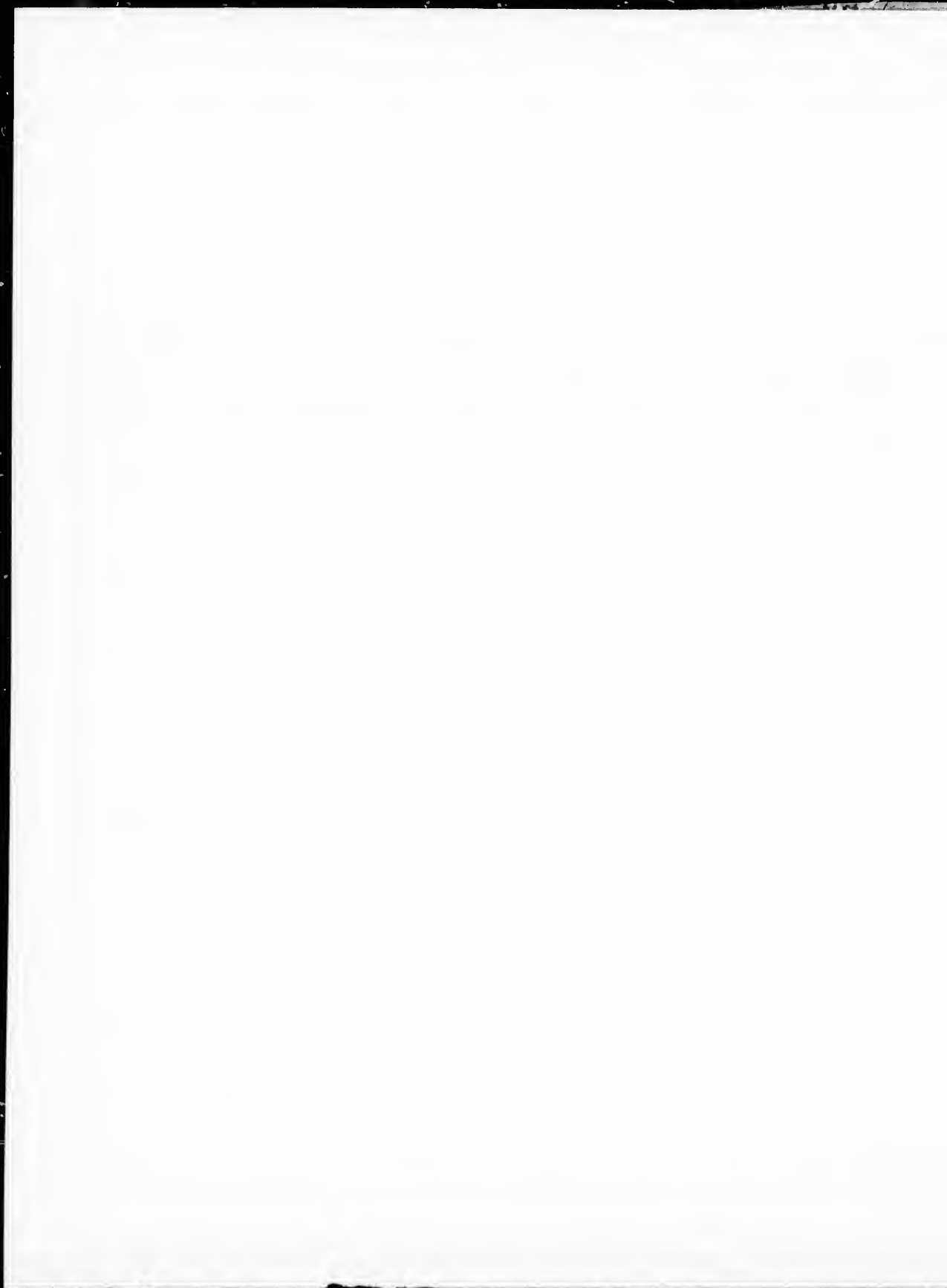
Douglas Library
Queen's University

Les images suivantes ont été reproduites avec le plus grand soin, compte tenu de la condition et de la netteté de l'exemplaire filmé, et en conformité avec les conditions du contrat de filmage.

Les exemplaires originaux dont la couverture en papier est imprimée sont filmés en commençant par le premier plat et en terminant soit par la dernière page qui comporte une empreinte d'impression ou d'illustration, soit par le second plat, selon le cas. Tous les autres exemplaires originaux sont filmés en commençant par la première page qui comporte une empreinte d'impression ou d'illustration et en terminant par la dernière page qui comporte une telle empreinte.

Un des symboles suivants apparaîtra sur la dernière image de chaque microfiche, selon le cas: le symbole → signifie "A SUIVRE", le symbole ▼ signifie "FIN".

Les cartes, planches, tableaux, etc., peuvent être filmés à des taux de réduction différents. Lorsque le document est trop grand pour être reproduit en un seul cliché, il est filmé à partir de l'angle supérieur gauche, de gauche à droite, et de haut en bas, en prenant le nombre d'images nécessaires. Les diagrammes suivants illustrent la méthode.



Scandals by the Dozen on Public Works.

ST. CHARLES' BRANCH RAILWAY, (14 miles):—Promised cost, \$136,000, expended upon it \$1,740,000; outstanding claims, \$20,719; cost of road itself, \$822,000, cost of land damages, \$900,000.

TAY CANAL, (6 miles):—Estimated cost, \$132,660; expended upon it, \$476,128; revenue for 1894, \$126; cost of maintenance 1894, \$2,458.

LITTLE RAPIDS LOCK:—Contract estimate of cost, \$86,680; paid to contractor, \$260,000, contractor's claims still unpaid, \$61,000; no traffic and no receipts from the work.

GALOPS RAPIDS CHANNEL, (Cornwall Canal):—Contract price, \$306,600; paid to contractors, \$46,500; contractors' claims still unpaid, \$130,000; the Minister of Canals stated in Parliament after the work was taken over that no one would use it.

SHEIKS ISLAND DAM, (Cornwall Canal):—The original contract was cancelled and a work abandoned, upon which \$155,000 of money was absolutely thrown away. The new work was given to a favored firm of contractors without tenders who have been allowed \$22,500 over their contract price.

LANGEVIN BLOCK:—Estimate of cost less than \$500,000; already paid, \$781,000, outstanding claims, \$250,000; Contractor Charlebois had following clause put into the contracts which other contractors on the building had with Government: "The contractors will agree to bind themselves to buy the right of way from the contractor Mr Charlebois."

CONNOLLY-McGREEVY WORKS:—Cost to contractors of work, \$2,184,259; cost to country, \$3,138,234; contractors' profits, \$953,975; lost to country after deducting fair profit, \$700,000.

PRINTING BUREAU SCANDAL:—Senecal's commissions on purchases for supplies and machinery, \$50,000.

CURRAN BRIDGE:—Estimate cost, \$123,000; Government Commission's estimate of reasonable cost, \$100,000; actual cost, \$430,000; stolen from the country, \$270,000; Judge Desnoyers decided that Government's contract with contractor St. Louis was so drawn that he had lived up to it.

Campaign contributions paid by Senator Ross and Mr. Beemer to Sir Adolphe Carou and repouced by subsidy to the Lake St. John Railway, \$50,000.

FREDERICTON AND ST. MARY'S BRIDGE:—Paid up capital of company, \$20,000; Government loan at 4 per cent, \$300,000; Government bonus, \$30,000; total cost of bridge, \$418,000; floating debt of bridge, \$19,000; interest due the Government upon loan since 1888, \$66,000; total amount public money sunk in this private speculation, \$396,000.

CARAQUET RAILWAY:—\$224,000 of public money has been sunk in this sink hole. The road is not paying running expenses, and the public expenditure which was incurred for election purposes and nothing else is a total loss.

Never mind how you voted in past elections. You are not the chattel of any party leader, or the serf of any political organization. Never mind if you were a Government supporter in other days. It is your business now to consider facts as demonstrated in your own experience. If you would avoid a repetition of wholesale highway robbery and favor honest Government vote for a **Liberal Candidate**. The man who cannot vote against "his party" for his country is unworthy of the franchise and unfit for citizenship in a free community.

VOTE AND USE YOUR INFLUENCE FOR
ROBERT MACKAY,
For St. Antoine Division.

