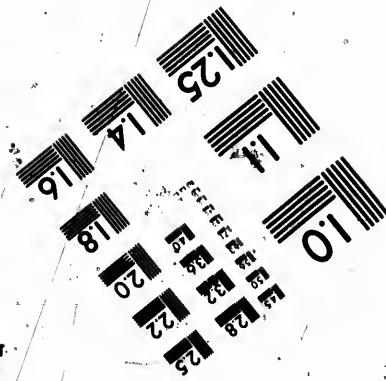
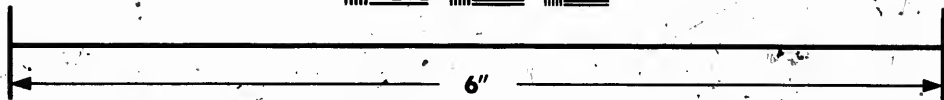
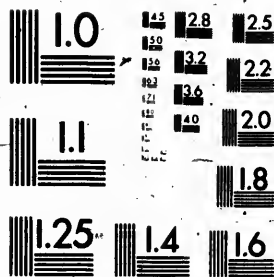


**IMAGE EVALUATION
TEST TARGET (MT-3)**



**Photographic
Sciences
Corporation**

23 WEST MAIN STREET
WEBSTER, N.Y. 14580
(716) 873-4503

1.8
2.0
2.2
2.5
2.8
3.2
3.6
4.0

**CIHM
Microfiche
Series
(Monographs)**

**ICMH
Collection de
microfiches
(monographies)**



Canadian Institute for Historical Microreproductions / Institut canadien de microreproductions historiques

1.0
1.2
1.5
1.8
2.0
2.2
2.5
2.8
3.2
3.6
4.0

© 1991

Technical and Bibliographic Notes / Notes techniques et bibliographiques

The Institute has attempted to obtain the best original copy available for filming. Features of this copy which may be bibliographically unique, which may alter any of the images in the reproduction, or which may significantly change the usual method of filming, are checked below.

L'Institut a microfilmé le meilleur exemplaire qu'il lui a été possible de se procurer. Les détails de cet exemplaire qui sont peut-être uniques du point de vue bibliographique, qui peuvent modifier une image reproduite, ou qui peuvent exiger une modification dans la méthode normale de filmage sont indiqués ci-dessous.

- Coloured covers/
Couverture de couleur
- Covers damaged/
Couverture endommagée
- Covers restored and/or laminated/
Couverture restaurée et/ou pelliculée
- Cover title missing/
Le titre de couverture manque
- Coloured maps/
Cartes géographiques en couleur
- Coloured ink (i.e. other than blue or black)/
Encre de couleur (i.e. autre que bleue ou noire)
- Coloured plates and/or illustrations/
Planches et/ou illustrations en couleur
- Bound with other material/
Relié avec d'autres documents
- Tight binding may cause shadows or distortion along interior margin/
La reliure serrée peut causer de l'ombre ou de la distorsion le long de la marge intérieure
- Blank leaves added during restoration may appear within the text. Whenever possible, these have been omitted from filming/
Il se peut que certaines pages blanches ajoutées lors d'une restauration apparaissent dans le texte, mais, lorsque cela était possible, ces pages n'ont pas été filmées.

- Coloured pages/
Pages de couleur
- Pages damaged/
Pages endommagées
- Pages restored and/or laminated/
Pages restaurées et/ou pelliculées
- Pages discoloured, stained or foxed/
Pages décolorées, tachetées ou piquées
- Pages detached/
Pages détachées
- Showthrough/
Transparence
- Quality of print varies/
Qualité inégale de l'impression
- Continuous pagination/
Pagination continue
- Includes index(es)/
Comprend un (des) index
- Title page of issue/
Page de titre de la livraison
- Caption of issue/
Titre de départ de la livraison
- Masthead/
Générique (périodiques) de la livraison

Title on header taken from:
Le titre de l'en-tête provient:

Additional comments:
Commentaires supplémentaires:

There are some creases in the middle of pages.

This item is filmed at the reduction ratio checked below/
Ce document est filmé au taux de réduction indiqué ci-dessous.

10X	14X	18X	22X	26X	30X
<input type="checkbox"/>	<input type="checkbox"/>	<input type="checkbox"/>	<input type="checkbox"/>	<input checked="" type="checkbox"/>	<input type="checkbox"/>
12X	16X	20X	24X	28X	32X

The copy filmed here has been reproduced thanks to the generosity of:

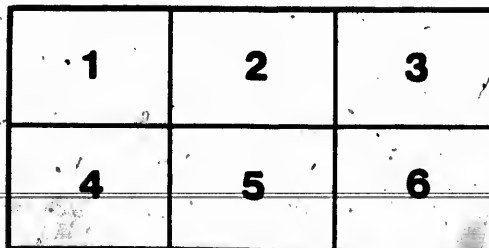
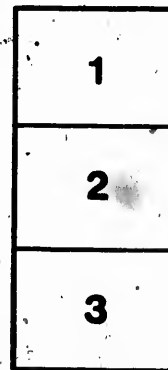
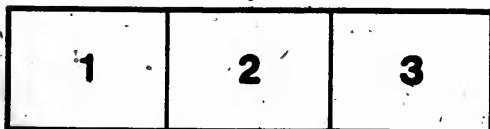
Manuscript Division,
National Archives of Canada

The images appearing here are the best quality possible considering the condition and legibility of the original copy and in keeping with the filming contract specifications.

Original copies in printed paper covers are filmed beginning with the front cover and ending on the last page with a printed or illustrated impression, or the back cover when appropriate. All other original copies are filmed beginning on the first page with a printed or illustrated impression, and ending on the last page with a printed or illustrated impression.

The last recorded frame on each microfiche shall contain the symbol \rightarrow (meaning "CONTINUED"), or the symbol ∇ (meaning "END"), whichever applies.

Maps, plates, charts, etc., may be filmed at different reduction ratios. Those too large to be entirely included in one exposure are filmed beginning in the upper left hand corner, left to right and top to bottom, as many frames as required. The following diagrams illustrate the method:



L'exemplaire filmé fut reproduit grâce à la générosité de:

Division des manuscrits,
Archives nationales du Canada

Les images suivantes ont été reproduites avec le plus grand soin, compte tenu de la condition et de la netteté de l'exemplaire filmé, et en conformité avec les conditions du contrat de filmage.

Les exemplaires originaux dont la couverture en papier est imprimée sont filmés en commençant par le premier plat et en terminant soit par la dernière page qui comporte une empreinte d'impression ou d'illustration, soit par le second plat, selon le cas. Tous les autres exemplaires originaux sont filmés en commençant par la première page qui comporte une empreinte d'impression ou d'illustration et en terminant par la dernière page qui comporte une telle empreinte.

Un des symboles suivants apparaîtra sur la dernière image de chaque microfiche, selon le cas: le symbole \rightarrow signifie "A SUIVRE", le symbole ∇ signifie "FIN".

Les cartes, planches, tableaux, etc., peuvent être filmés à des taux de réduction différents. Lorsque le document est trop grand pour être reproduit en un seul cliché, il est filmé à partir de l'angle supérieur gauche, de gauche à droite, et de haut en bas, en prenant le nombre d'images nécessaire. Les diagrammes suivants illustrent la méthode.



Public Accounts Committee Room,

Quebec, May 9th. 1863.

The Sub-Committee to whom was referred the several accounts of Samuel B. Foote, for Stationery and materials furnished to the several Departments, beg leave to submit the following as their Report :

That they have had submitted to them all the accounts for Stationery and materials furnished the Government by the said Foote during the years 1861 and 1862.

That they have examined the Officers of the different Departments relative to the said accounts and find that there are claims to a large amount unsatisfied.

That from the evidence submitted to them it would appear that the sum of \$7,000 have been advanced to the said Foote on account of work to be performed and goods to be supplied to the Finance and Customs Departments.

That goods to the amount of \$1,593 have been supplied to the said Departments on account of said advances, and it appears from the evidence that the said Foote has a large quantity of Stationery &c., on hand, which had been ordered by the said Department by the Officers in charge, and which the present Finance Minister refused to accept.

That there appears to be two accounts of \$8,138, and \$881.50 respectively, against the Department of Crown Lands for Stationery and materials furnished that Department, pursuant to an order given by Hon. P. M. Vankoughnet a few days before leaving his office, which remain unpaid.

That the quantity of said Stationery was wholly unnecessary and the prices exorbitant; but, it appears the quantity and prices were duly certified by the Hon. P. M. Vankoughnet, and no objections made by any Officer of the Department to Mr. Foote, from the time of the delivery and acceptance of the same up to the present time.

That there are two unsettled accounts of \$109.35 and \$375.50 against the Inspector General and Post Office Department, respectively, which accounts appear to be correct.

That after deducting and allowing for all advances made by the said Foote, there appears to be a balance of \$4,198 due him.

That the Committee have had a settlement of all the accounts with Mr. Foote, who has agreed to take the sum of \$4,000 in full of all claims against the several Departments.

Your Committee would therefore recommend that the said Foote be paid the sum of \$4,000 on his giving a discharge of all claims against the several Departments.

Your Committee submit the accompanying evidence.

(Signed), JOHN WHITE,
Chairman.
(Signed), J. W. DUNSFORD,
(Signed), G. CARON,
(Signed), J. C. RYKERT,

I certify the above to be a true copy of Report of Sub-Committee of Public Accounts Committee.

THAD'S. PATRICK.

