

**CIHM
Microfiche
Series
(Monographs)**

**ICMH
Collection de
microfiches
(monographies)**



Canadian Institute for Historical Microreproductions / Institut canadien de microreproductions historiques

© 1996

Technical and Bibliographic Notes / Notes technique et bibliographiques

The Institute has attempted to obtain the best original copy available for filming. Features of this copy which may be bibliographically unique, which may alter any of the images in the reproduction, or which may significantly change the usual method of filming are checked below.

- Coloured covers / Couverture de couleur
- Covers damaged / Couverture endommagée
- Covers restored and/or laminated / Couverture restaurée et/ou pelliculée
- Cover title missing / Le titre de couverture manque
- Coloured maps / Cartes géographiques en couleur
- Coloured ink (i.e. other than blue or black) / Encre de couleur (i.e. autre que bleue ou noire)
- Coloured plates and/or illustrations / Planches et/ou illustrations en couleur
- Bound with other material / Relié avec d'autres documents
- Only edition available / Seule édition disponible
- Tight binding may cause shadows or distortion along interior margin / La reliure serrée peut causer de l'ombre ou de la distorsion le long de la marge intérieure.
- Blank leaves added during restorations may appear within the text. Whenever possible, these have been omitted from filming / Il se peut que certaines pages blanches ajoutées lors d'une restauration apparaissent dans le texte, mais, lorsque cela était possible, ces pages n'ont pas été filmées.
- Additional comments / Commentaires supplémentaires:

L'Institut a microfilmé le meilleur exemplaire qu'il lui a été possible de se procurer. Les détails de cet exemplaire qui sont peut-être uniques du point de vue bibliographique, qui peuvent modifier une image reproduite, ou qui peuvent exiger une modifications dans la méthode normale de filmage sont indiqués ci-dessous.

- Coloured pages / Pages de couleur
- Pages damaged / Pages endommagées
- Pages restored and/or laminated / Pages restaurées et/ou pelliculées
- Pages discoloured, stained or foxed / Pages décolorées, tachetées ou piquées
- Pages detached / Pages détachées
- Showthrough / Transparence
- Quality of print varies / Qualité inégale de l'impression
- Includes supplementary material / Comprend du matériel supplémentaire
- Pages wholly or partially obscured by errata slips, tissues, etc., have been refilmed to ensure the best possible image / Les pages totalement ou partiellement obscurcies par un feuillet d'errata, une pelure, etc., ont été filmées à nouveau de façon à obtenir la meilleure image possible.
- Opposing pages with varying colouration or discolourations are filmed twice to ensure the best possible image / Les pages s'opposant ayant des colorations variables ou des décolorations sont filmées deux fois afin d'obtenir la meilleur image possible.

This item is filmed at the reduction ratio checked below /
Ce document est filmé au taux de réduction indiqué ci-dessous.

10X	12X	14X	16X	18X	20X	22X	24X	26X	28X	30X	32X
<input type="checkbox"/>	<input type="checkbox"/>	<input type="checkbox"/>	<input type="checkbox"/>	<input type="checkbox"/>	<input type="checkbox"/>	<input checked="" type="checkbox"/>	<input type="checkbox"/>	<input type="checkbox"/>	<input type="checkbox"/>	<input type="checkbox"/>	<input type="checkbox"/>

The copy filmed here has been reproduced thanks to the generosity of:

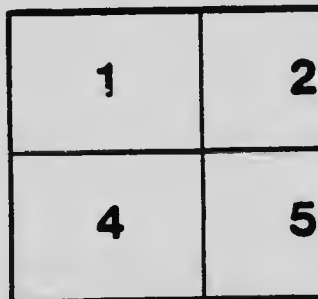
National Library of Canada

The images appearing here are the best quality possible considering the condition and legibility of the original copy and in keeping with the filming contract specifications.

Original copies in printed paper covers are filmed beginning with the front cover and ending on the last page with a printed or illustrated impression, or the back cover when appropriate. All other original copies are filmed beginning on the first page with a printed or illustrated impression, and ending on the last page with a printed or illustrated impression.

The last recorded frame on each microfiche shell contains the symbol \rightarrow (meaning "CONTINUED"), or the symbol ∇ (meaning "END"), whichever applies.

Maps, plates, charts, etc., may be filmed at different reduction ratios. Those too large to be entirely included in one exposure are filmed beginning in the upper left hand corner, left to right and top to bottom, as many frames as required. The following diagrams illustrate the method:



L'exemplaire filmé fut reproduit grâce à la générosité de:

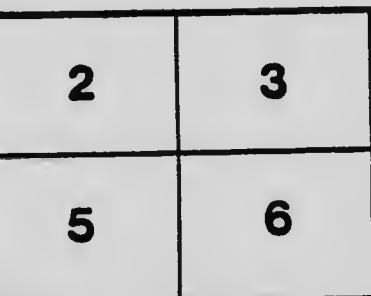
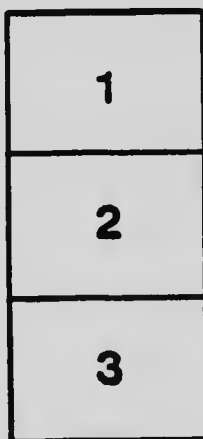
Bibliothèque nationale du Canada

Les images suivantes ont été reproduites avec le plus grand soin, compte tenu de la condition et de la netteté de l'exemplaire filmé, et en conformité avec les conditions du contrat de filmage.

Les exemplaires originaux dont la couverture en papier est imprimée sont filmés en commençant par le premier plat et en terminant soit par la dernière page qui comporte une empreinte d'impression ou d'illustration, soit par le second plat, selon le cas. Tous les autres exemplaires originaux sont filmés en commençant par la première page qui comporte une empreinte d'impression ou d'illustration et en terminant par la dernière page qui comporte une telle empreinte.

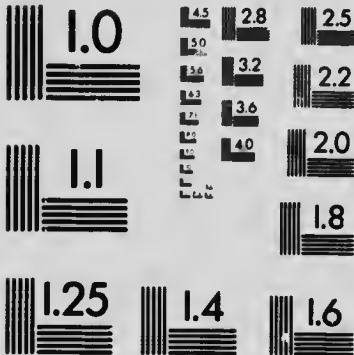
Un des symboles suivants apparaît sur la dernière image de chaque microfiche, selon le cas: le symbole \rightarrow signifie "A SUIVRE", le symbole ∇ signifie "FIN".

Les cartes, planches, tableaux, etc., peuvent être filmés à des taux de réduction différents. Lorsque le document est trop grand pour être reproduit en un seul cliché, il est filmé à partir de l'angle supérieur gauche, de gauche à droite, et de haut en bas, en prenant le nombre d'images nécessaire. Les diagrammes suivants illustrent la méthode.



MICROCOPY RESOLUTION TEST CHART

(ANSI and ISO TEST CHART No. 2)



APPLIED IMAGE Inc

1653 East Main Street
Rochester, New York 14609 USA
(716) 482 - 0300 - Phone
(716) 288 - 5989 - Fax

In
Memoriam



"He Was My Friend,

Faithful and Just to Me."

MacGregor Memorial Scholarship.

It is proposed to establish a Memorial to the late Dr. P. C. MacGregor, for many years headmaster of the Almonte High School, and the undersigned have formed themselves into a committee to assist in this worthy undertaking.

Dr. MacGregor's loyalty to his work and his devotion to the interests of all who came under his care during all these years are too well and too widely known to need any mention here. We believe that there are hundreds among his former pupils who will welcome the opportunity to assist in the establishment of an enduring and appropriate tribute to his useful life and great services.

There is no doubt that the most fitting tribute to Dr. MacGregor's memory, the tribute he himself would most appreciate, if he were still with us, would be a scholarship, to be known as the "P. C. MacGregor Memorial Scholarship," open to pupils of the Almonte High School, available to assist in sending some promising and deserving student to college. As Dr. MacGregor's interest in Queen's University was second only to his interest in the Almonte High School, it is proposed that this scholarship be a Matriculation Scholarship for Queen's University, unless a

majority of the subscribers express a wish to the contrary. The committee hopes that an endowment of *Two Thousand Dollars*, the income of which may be used for this purpose, can be raised by contributions from I. J. MacGregor's former pupils.

As it is desirable to place on record the wide circle through which Dr MacGregor's influence and friendship extended, any, even the smallest contributions, will accordingly be welcome. From those who have prospered in life a generous response is anticipated.

The Committee therefore asks that subscriptions be sent to Mr. Andrew Haydon, 19 Elgin St., Ottawa, by whom they will be acknowledged.

HON. T. W. MCGARRY,
Honorary Chairman,
Renfrew, Ont.

W. B. MUNRO,
Chairman,
Cambridge, Mass.

MISS JESSIE MUIR,
Secretary,
110 Gloucester St.,
Ottawa, Ont.

ANDREW HAYDON
Treasurer,
Ottawa, Ont.

MISS JESSIE MATTHEWS,
Assistant-Secretary,
Almonte, Ont.

J. FENTON ARGUE, M.D.,
Ottawa, Ont.

E. R. PEACOCK,
London, England.

REV. W. C. GEMMILL,
Tokyo, Japan.

ROBERT D. R. DRUMMOND,
Hamilton, Ont.

MRS. M. WHITING FERRIS,
New York City.

ALFRED W. PLAYFAIR,
Tokyo, Japan.

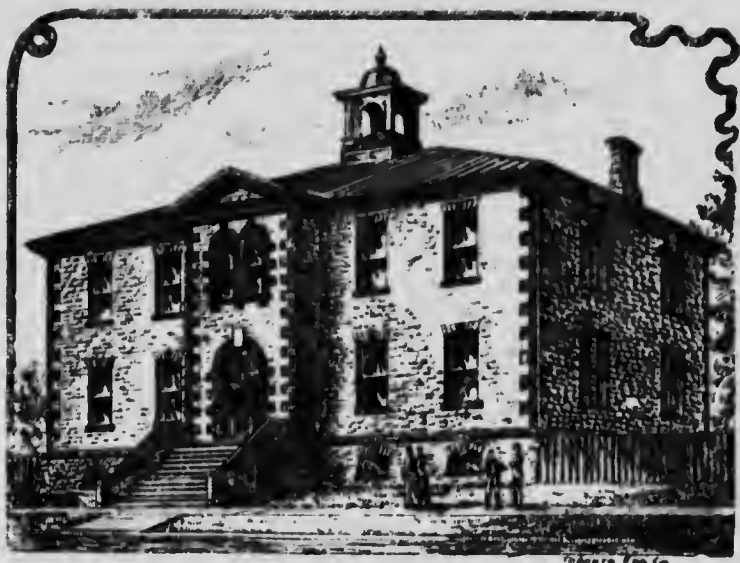
DR. JOHN P. RALEIGH,
Winnipeg, Man.

MRS. T. G. ACRES,
Ottawa, Ont.

JAMES B. McDOUGALL,
North Bay, Ont.

REV. T. CRAWFORD BROWN,
Toronto, Ont.

STUART C. McLEOD,
New York City.



“But the same old bricks are in the wall,
The bell swings to and fro;
Its music’s just the same, dear Tom,
T’was twenty years ago.”

Peter Campbell MacGregor, B.A., LL.D.

BORN in Glasgow, Scotland, 6th December, 1842; Died at Ottawa, Canada, 2nd April, 1916; Came with parents to Balderson, August, 1843; Early education, Perth Grammar School. At age of eighteen Principal of Bathurst and South Sherbrooke union school; Matriculated from Kingston Grammar School into Queen's University, 1863, standing first, winning Watkin's Scholarship; Won Scholarships in every college year and several prizes. Graduated B.A. 1866, first in Classics, Philosophy and English, and second in Mathematics. Principal Bath High School 1866; Head Master Morrisburg High School 1870; Principal High School Niagara-on-the-Lake 1873. Almost continuously Principal Almonte High School, 1874 to 1900, which, under Dr. MacGregor, ranked among the foremost schools of the Province. Registrar of Deeds, North Lanark, 1900 to 1915. A Trustee and LL.D. of Queen's University. Associated with many charitable and fraternal societies. Married Christmas Day, 1879, to Kate Ferguson McNab, who predeceased him. Two daughters, Miss Annie K., of Haileybury High School, and Miss Grace C., Mines Department, Ottawa.

A great Scottish teacher whose heart was in the advancement of his pupils. He could truly say with Horace, "Exegi monumentum aere perennius."



