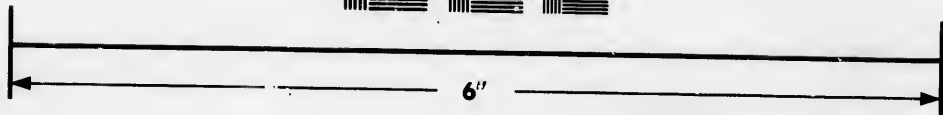
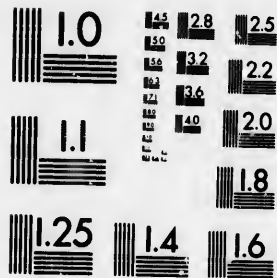
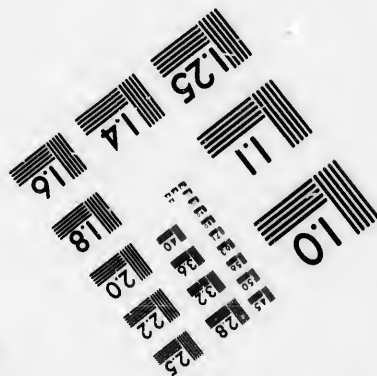
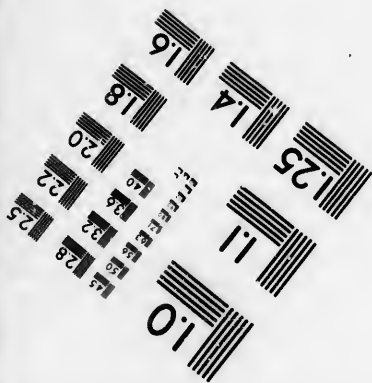


**IMAGE EVALUATION
TEST TARGET (MT-3)**



Canada



**Photographic
Sciences
Corporation**

23 WEST MAIN STREET
WEBSTER, N.Y. 14580
(716) 872-4503

**CIHM/ICMH
Microfiche
Series.**

**CIHM/ICMH
Collection de
microfiches.**



Canadian Institute for Historical Microreproductions / Institut canadien de microreproductions historiques

© 1986

Technical and Bibliographic Notes/Notes techniques et bibliographiques

The Institute has attempted to obtain the best original copy available for filming. Features of this copy which may be bibliographically unique, which may alter any of the images in the reproduction, or which may significantly change the usual method of filming, are checked below.

L'Institut a microfilmé le meilleur exemplaire qu'il lui a été possible de se procurer. Les détails de cet exemplaire qui sont peut-être uniques du point de vue bibliographique, qui peuvent modifier une image reproduite, ou qui peuvent exiger une modification dans la méthode normale de filmage sont indiqués ci-dessous.

- | | |
|--|--|
| <input type="checkbox"/> Coloured covers/
Couverture de couleur | <input type="checkbox"/> Coloured pages/
Pages de couleur |
| <input type="checkbox"/> Covers damaged/
Couverture endommagée | <input type="checkbox"/> Pages damaged/
Pages endommagées |
| <input type="checkbox"/> Covers restored and/or laminated/
Couverture restaurée et/ou pelliculée | <input type="checkbox"/> Pages restored and/or laminated/
Pages restaurées et/ou pelliculées |
| <input type="checkbox"/> Cover title missing/
Le titre de couverture manque | <input checked="" type="checkbox"/> Pages discoloured, stained or foxed/
Pages décolorées, tachetées ou piquées |
| <input type="checkbox"/> Coloured maps/
Cartes géographiques en couleur | <input type="checkbox"/> Pages detached/
Pages détachées |
| <input type="checkbox"/> Coloured ink (i.e. other than blue or black)/
Encre de couleur (i.e. autre que bleue ou noire) | <input checked="" type="checkbox"/> Showthrough/
Transparence |
| <input type="checkbox"/> Coloured plates and/or illustrations/
Planches et/ou illustrations en couleur | <input type="checkbox"/> Quality of print varies/
Qualité inégale de l'impression |
| <input type="checkbox"/> Bound with other material/
Relié avec d'autres documents | <input type="checkbox"/> Includes supplementary material/
Comprend du matériel supplémentaire |
| <input type="checkbox"/> Tight binding may cause shadows or distortion
along interior margin/
La reliure serrée peut causer de l'ombre ou de la
distorsion le long de la marge intérieure | <input type="checkbox"/> Only edition available/
Seule édition disponible |
| <input type="checkbox"/> Blank leaves added during restoration may
appear within the text. Whenever possible, these
have been omitted from filming/
Il se peut que certaines pages blanches ajoutées
lors d'une restauration apparaissent dans le texte,
mais, lorsque cela était possible, ces pages n'ont
pas été filmées. | <input type="checkbox"/> Pages wholly or partially obscured by errata
slips, tissues, etc., have been refilmed to
ensure the best possible image/
Les pages totalement ou partiellement
obscurcies par un feuillet d'errata, une pelure,
etc., ont été filmées à nouveau de façon à
obtenir la meilleure image possible. |
| <input checked="" type="checkbox"/> Additional comments:/
Commentaires supplémentaires: | [Printed ephemera] 1 sheet (verso blank) |

This item is filmed at the reduction ratio checked below/
Ce document est filmé au taux de réduction indiqué ci-dessous.

10X	14X	18X	22X	26X	30X
<input type="checkbox"/>	<input type="checkbox"/>	<input type="checkbox"/>	<input checked="" type="checkbox"/>	<input type="checkbox"/>	<input type="checkbox"/>
12X	16X	20X	24X	28X	32X

The copy filmed here has been reproduced thanks to the generosity of:

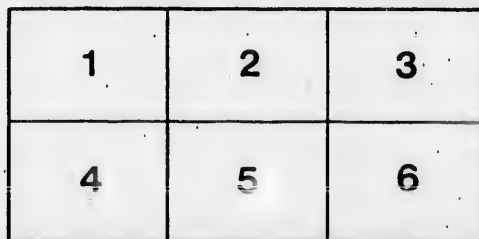
Seminary of Quebec
Library

The images appearing here are the best quality possible considering the condition and legibility of the original copy and in keeping with the filming contract specifications.

Original copies in printed paper covers are filmed beginning with the front cover and ending on the last page with a printed or illustrated impression, or the back cover when appropriate. All other original copies are filmed beginning on the first page with a printed or illustrated impression, and ending on the last page with a printed or illustrated impression.

The last recorded frame on each microfiche shell contains the symbol \rightarrow (meaning "CONTINUED"), or the symbol ∇ (meaning "END"), whichever applies.

Maps, plates, charts, etc., may be filmed at different reduction ratios. Those too large to be entirely included in one exposure are filmed beginning in the upper left hand corner, left to right and top to bottom, as many frames as required. The following diagrams illustrate the method:



L'exemplaire filmé fut reproduit grâce à la générosité de:

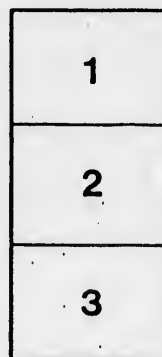
Séminaire de Québec
Bibliothèque

Les images suivantes ont été reproduites avec le plus grand soin, compte tenu de la condition et de la netteté de l'exemplaire filmé, et en conformité avec les conditions du contrat de filmage.

Les exemplaires originaux dont la couverture en papier est imprimée sont filmés en commençant par le premier plat et en terminant soit par la dernière page qui comporte une empreinte d'impression ou d'illustration, soit par le second plat, selon le cas. Tous les autres exemplaires originaux sont filmés en commençant par la première page qui comporte une empreinte d'impression ou d'illustration et en terminant par la dernière page qui comporte une telle empreinte.

Un des symboles suivants apparaîtra sur la dernière image de chaque microfiche, selon le cas: le symbole \rightarrow signifie "A SUIVRE", le symbole ∇ signifie "FIN".

Les cartes, planches, tableaux, etc., peuvent être filmés à des taux de réduction différents. Lorsque le document est trop grand pour être reproduit en un seul cliché, il est filmé à partir de l'angle supérieur gauche, de gauche à droite, et de haut en bas, en prenant le nombre d'images nécessaire. Les diagrammes suivants illustrent la méthode.





CIRCULAR OF HIS LORDSHIP
BISHOP LYNCH TO THE REV.
CLERGY OF THE DIOCESE OF
TORONTO.

ST. MICHAEL'S PALACE, }
Toronto, April 3, 1868, }

REV. AND DEAR SIR,—

In compliance with the laws of the Church, the regular Triennial Council of the Bishops of the Ecclesiastical Province of Quebec, in Canada, has been convoked by the Most Rev. Archbishop of Quebec, to meet in his Metropolitan Cathedral on the Seventh of May next, the Feast of St. Stanislaus, Bishop and Martyr. The object of Provincial Councils is, not to define the doctrines of the Church, but to maintain its discipline; to correct abuses, if any should have crept in; to provide for the always-increasing spiritual wants of the people entrusted to their pastoral care; and to extend the blessings of the Gospel to those "who sit in darkness and in the shadow of death;" of enacting laws binding in conscience Christian people. In the true Church alone does this authority exist, and it comes from Christ, the Head of the Church, and resides in the true Bishops of the Catholic Church, successors of the Apostles. "Take heed to yourselves, and to the whole flock, wherein the Holy Ghost hath placed you Bishops to rule the Church of God, which he hath purchased with His blood." (Acts xx. 28.) The obligations of the Faithful to obey these laws is evident from the words of St. Paul, "Obey your Prelates, and be subject to them; for they watch as being to render an account of yourselves, that they may do this with joy and not with grief. (Heb. xiii. 17.) Councils of Bishops have been always held in the Church on the model of

III 17.) Councils of Bishops have been always held in the Church on the model of that held in Jerusalem by the Apostles to settle matters of discipline, (Acts xv,) and of that when Matthias was chosen to succeed to the Episcopacy forfeited by the unhappy Judas. (Acts i.) Our Lord Jesus Christ has promised that where two or three would be gathered together in His name, He would be there in the midst of them. (Matt. xviii) Now, may we not with confidence expect that Christ, who promised also to be always with His Church, will be in the midst of His Bishops, praying and consulting together for the extension of His Kingdom on Earth? More than all others, the Faithful are interested that the Holy Spirit preside over and direct these solemn assemblies; consequently they ought to pray with fervor and constancy to obtain this favor from the Father of Lights, from whom cometh every good and excellent gift. (St. James i.) You will, then, Rev. and Dear Sir, engage your parishioners to acquit themselves faithfully of this important duty of prayer. From the receipt of this present letter until the end of the Council, you will please to add to the other collects at Mass the prayer *de Spiritu Sancto*. In Parish Churches and Religious Communities the Litany of the Blessed Virgin will be recited, after Mass, with the people, that She, through whom we have received Him who redeemed us, may obtain for us from her Divine Son, the grace to sanctify us.

Yours faithfully in Christ,

† JOHN JOSEPH LYNCH,

Bp. of Toronto.

