

NWp
979

M919
1917

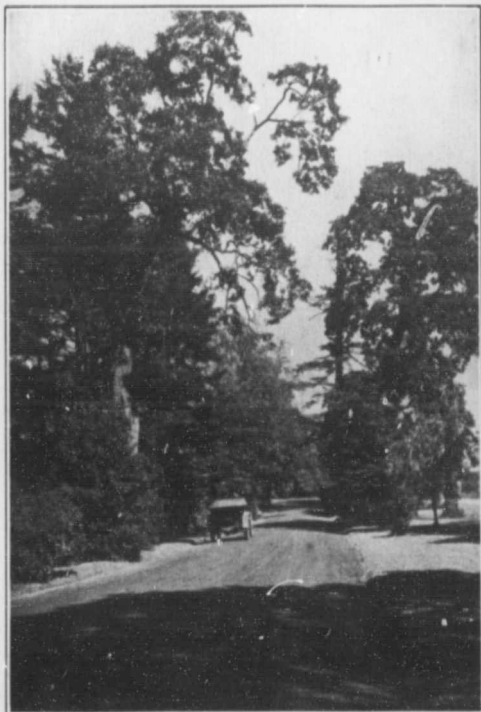
MOTOR ROUTES TO VICTORIA

British Columbia

FROM

Los Angeles and San Francisco

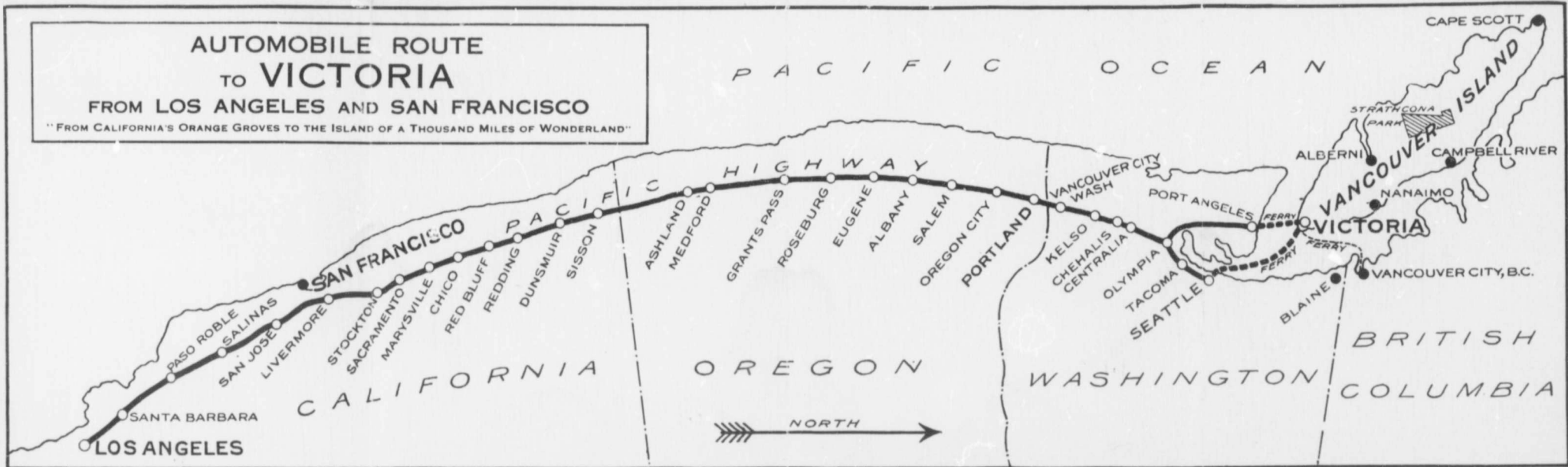
"From California's Orange Groves to The
Island of a Thousand Miles of Wonderland"



One of the many Beautiful Auto Roads near Victoria

Compliments of
ISLAND AUTOMOBILE ASSOCIATION
VICTORIA

British Columbia, Canada



TO VICTORIA BY MOTOR

VICTORIA, the capital city of British Columbia, situated at the southern end of Vancouver Island, is sometimes called the "Gateway to Canada's Auto Paradise." Admirers of the tours and resorts upon the Island frequently refer to it as the "Island of a Thousand Miles of Wonderland." Certainly its climatic and scenic attractions, the good roads, the absence of poisonous snakes and insect pests, its excellent hotels, splendid fishing, practically all the year round golf, and absence of extremes of either heat or cold, render it a locality delightful alike to either residents or visitors.

The object of this little pamphlet is to indicate, very briefly, how Victoria and Vancouver Island can be reached by the motorists of the South.

A glance at the map above shows how the route runs almost due North, following the far-famed "Pacific Highway," and passing through

many delightful cities and towns noted in the history and present day life of the Pacific Coast.

The whole route, as indicated on the above map, is easily negotiated by any present day auto. The best time of the year for the trip is from the middle of May to end of October.

The motorist, upon reaching Olympia, the charming capital of the "Evergreen State," has choice of two routes by which to continue his journey and reach Victoria. The route usually followed is to continue, along the Pacific Highway, through Tacoma, on to Seattle, and thence, by steamer-ferry, eighty miles, to Victoria and "Canada's Auto Paradise." The other route is by way of the "Olympic Highway," skirting the shores of Hood's Canal, and through many miles of picturesque, densely wooded country, to Port Angeles, and from there, by steamer-ferry, twenty miles, across the Straits of Juan de Fuca, to Victoria.

In passing to or from the United States or Canada the motorist must report to the Customs officials. These officials are invariably most courteous and obliging, and there is a total

absence of "red tape" or delay in passing to or from either country.

One thing the tourist must remember is, that the rules of the road in British Columbia are exactly the opposite to what they are in the United States.

Upon arrival at Victoria, the visitor has a choice of hotels at a wide range of prices, also many excellent apartment houses. The motorist will be agreeably impressed by the well-paved, clean streets, the cluster lighting, well-kept parking-strips, and other details concerning the streets that the trained eye of the motorist quickly discerns.

It is not the purpose of this pamphlet to attempt to describe either Victoria or Vancouver Island; sufficient, perhaps, here to say that the Island comprises an area as large as the States of Massachusetts, Connecticut and Rhode Island combined, or, in other words, practically the same size as Switzerland, which country in its topography it greatly resembles. Its splendid roads, attractive scenery, moderate climate (cool in summer, warm in winter) and numerous

resorts, with an abundance of golf and fishing, render the Island the most attractive locality for a motorist's holiday that has yet been "discovered" upon the American Continent. Further information, upon any subject, will be gladly forwarded upon request.

In this connection, however, attention is drawn to the "Georgian Circuit," an international auto tour in the Pacific Northwest, a map of which is shown in this folder. A small special leaflet is issued on this tour, which cannot fail to interest every prospective motor tourist to Victoria, and copies of this leaflet will be forwarded upon request.

It is impossible, in a brief pamphlet such as this, to give details and mileage of the route shown on our map leading to Victoria and the Island. Sufficient to say that, while all kinds of roads are encountered, yet the general average is surprisingly good indeed. There are garages and comfortable hotels along the whole route, at short intervals, and consequently it is possible for the motorist to limit his day's journey in accordance with his inclination at the time, with-



VANCOUVER ISLAND
BRITISH COLUMBIA

BRITISH COLUMBIA

PACIFIC OCEAN

STATE OF WASHINGTON

GEORGIAN CIRCUIT

An International Auto Tour
 in the Pacific Northwest

NOTE.—Distance Seattle to Spokane is drawn to reduced scale. Actual distance 335 miles.

MOUNT RAINIER NATL PARK

MOUNT BAKER NATIONAL PARK

PORTLAND
 PACIFIC HIGHWAY ROUTE TO CALIFORNIA

OREGON

out being obliged to travel to a schedule in order to secure accommodation.

For those desiring more explicit information, full details of road conditions can be obtained from the pages of any good 1916 or 1917 Auto Road Blue Book. There are also a number of optional routes and variations possible, some of them extending for hundreds of miles, though all of these options "tie in" sooner or later with the route indicated upon our map.

Motorists who would like to make the trip to Victoria and the Pacific Northwest, but have not sufficient time available to make the entire tour, can ship their cars to either Victoria or Seattle, by steamer, from Los Angeles or San Francisco.

The total distance from Los Angeles to Victoria is just over 1,550 miles; San Francisco to Victoria, 1,050 miles, and Portland to Victoria, about 275 miles.

In 1901 the present King and Queen of England, in speaking of Victoria, said: "It is the most beautiful city we have seen in our trip around the world."

The Marquis of Lorne, in 1882, in his interesting book "Canadian Pictures," wrote: "It is fitting that we should keep to the last a notice of Vancouver Island, if it be fitting to reserve for the last what is most delicious, for that beautiful country, with a climate resembling that of the South Coast of England, possesses attractions which will make it the favourite place of residence of Canada."

Rudyard Kipling, in speaking of British Columbia's climate, said: "It is the most perfect in the world, and the best of it is experienced in Victoria."

Lord Strathcona remarked, in 1909: "Victoria is one of the most beautiful spots in the world; I cannot conceive of a more desirable place of residence."

ENQUIRIES FOR SPECIFIC INFORMATION UPON ANY SUBJECT ARISING OUT OF THIS PAMPHLET WILL BE PROMPTLY AND ACCURATELY REPLIED TO

COMPLIMENTS OF
**ISLAND AUTOMOBILE ASSOCIATION
VICTORIA**

BRITISH COLUMBIA, CANADA