

**CIHM
Microfiche
Series
(Monographs)**

**ICMH
Collection de
microfiches
(monographies)**



Canadian Institute for Historical Microreproductions / Institut canadien de microreproductions historiques

© 1999

Technical and Bibliographic Notes / Notes techniques et bibliographiques

The Institute has attempted to obtain the best original copy available for filming. Features of this copy which may be bibliographically unique, which may alter any of the images in the reproduction, or which may significantly change the usual method of filming are checked below.

- Coloured covers / Couverture de couleur
- Covers damaged / Couverture endommagée
- Covers restored and/or laminated / Couverture restaurée et/ou pelliculée
- Cover title missing / Le titre de couverture manque
- Coloured maps / Cartes géographiques en couleur
- Coloured ink (i.e. other than blue or black) / Encre de couleur (i.e. autre que bleue ou noire)
- Coloured plates and/or illustrations / Planches et/ou illustrations en couleur
- Bound with other material / Relié avec d'autres documents
- Only edition available / Seule édition disponible
- Tight binding may cause shadows or distortion along interior margin / La reliure serrée peut causer de l'ombre ou de la distorsion le long de la marge intérieure.
- Blank leaves added during restorations may appear within the text. Whenever possible, these have been omitted from filming / Il se peut que certaines pages blanches ajoutées lors d'une restauration apparaissent dans le texte, mais, lorsque cela était possible, ces pages n'ont pas été filmées.
- Additional comments / Commentaires supplémentaires:

L'Institut a microfilmé le meilleur exemplaire qu'il lui a été possible de se procurer. Les détails de cet exemplaire qui sont peut-être uniques du point de vue bibliographique, qui peuvent modifier une image reproduite, ou qui peuvent exiger une modification dans la méthode normale de filmage sont indiqués ci-dessous.

- Coloured pages / Pages de couleur
- Pages damaged / Pages endommagées
- Pages restored and/or laminated / Pages restaurées et/ou pelliculées
- Pages discoloured, stained or foxed / Pages décolorées, tachetées ou piquées
- Pages detached / Pages détachées
- Showthrough / Transparence
- Quality of print varies / Qualité inégale de l'impression
- Includes supplementary material / Comprend du matériel supplémentaire
- Pages wholly or partially obscured by errata slips, tissues, etc., have been refilmed to ensure the best possible image / Les pages totalement ou partiellement obscurcies par un feuillet d'errata, une pelure, etc., ont été filmées à nouveau de façon à obtenir la meilleure image possible.
- Opposing pages with varying colouration or discolourations are filmed twice to ensure the best possible image / Les pages s'opposant ayant des colorations variables ou des décolorations sont filmées deux fois afin d'obtenir la meilleure image possible.

This item is filmed at the reduction ratio checked below / Ce document est filmé au taux de réduction indiqué ci-dessous.

10x	12x	14x	16x	18x	20x	22x	24x	26x	28x	30x	32x
<input type="checkbox"/>	<input type="checkbox"/>	<input type="checkbox"/>	<input type="checkbox"/>	<input type="checkbox"/>	<input type="checkbox"/>	<input type="checkbox"/>	<input checked="" type="checkbox"/>	<input type="checkbox"/>	<input type="checkbox"/>	<input type="checkbox"/>	<input type="checkbox"/>

The copy filmed here has been reproduced thanks to the generosity of:

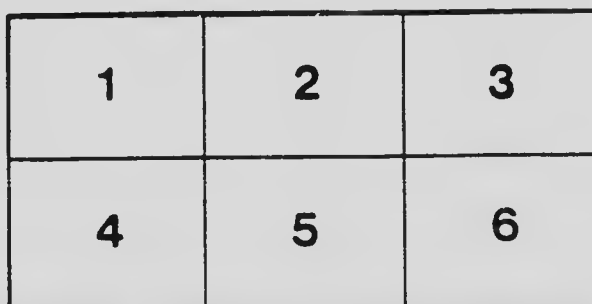
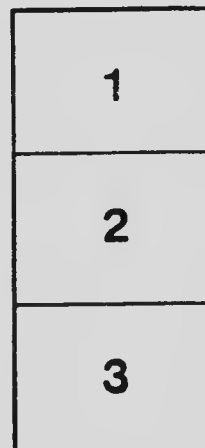
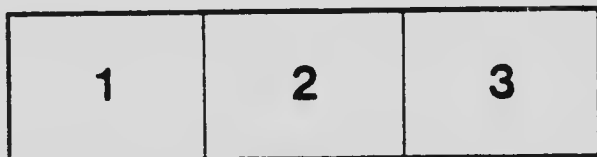
National Library of Canada

The images appearing here are the best quality possible considering the condition and legibility of the original copy and in keeping with the filming contract specifications.

Original copies in printed paper covers are filmed beginning with the front cover and ending on the last page with a printed or illustrated impression, or the back cover when appropriate. All other original copies are filmed beginning on the first page with a printed or illustrated impression, and ending on the last page with a printed or illustrated impression.

The last recorded frame on each microfiche shall contain the symbol \rightarrow (meaning "CONTINUED"), or the symbol ∇ (meaning "END"), whichever applies.

Maps, plates, charts, etc., may be filmed at different reduction ratios. Those too large to be entirely included in one exposure are filmed beginning in the upper left hand corner, left to right and top to bottom, as many frames as required. The following diagrams illustrate the method:



L'exemplaire filmé fut reproduit grâce à la générosité de:

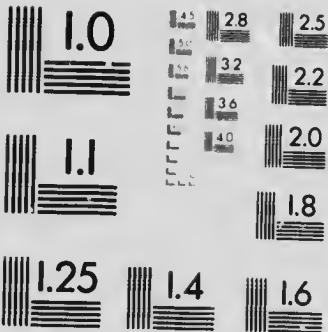
Bibliothèque nationale du Canada

Les images suivantes ont été reproduites avec le plus grand soin, compte tenu de la condition et de la netteté de l'exemplaire filmé, et en conformité avec les conditions du contrat de filmage.

Les exemplaires originaux dont la couverture en papier est imprimée sont filmés en commençant par le premier plat et en terminant soit par la dernière page qui comporte une empreinte d'impression ou d'illustration, soit par le second plat, selon le cas. Tous les autres exemplaires originaux sont filmés en commençant par la première page qui comporte une empreinte d'impression ou d'illustration et en terminant par la dernière page qui comporte une telle empreinte.

Un des symboles suivants apparaîtra sur la dernière image de chaque microfiche, selon le cas: le symbole \rightarrow signifie "A SUIVRE", le symbole ∇ signifie "FIN".

Les cartes, planches, tableaux, etc., peuvent être filmés à des taux de réduction différents. Lorsque le document est trop grand pour être reproduit en un seul cliché, il est filmé à partir de l'angle supérieur gauche, de gauche à droite, et de haut en bas, en prenant le nombre d'images nécessaire. Les diagrammes suivants illustrent la méthode.



APPLIED IMAGE Inc

200 First Street
 Rochester, New York 14609-1100
 716/442-2100
 FAX 716/442-2101

3
DEPARTMENT OF THE INTERIOR, CANADA

HON. ARTHUR MEIGHEN, *Minister* — W. W. CORY, *Deputy Minister*

GEODETIC SURVEY OF CANADA

NOEL OGILBYE, *Superintendent*

PRECISE LEVELLING

CERTAIN LINES IN ONTARIO and QUEBEC

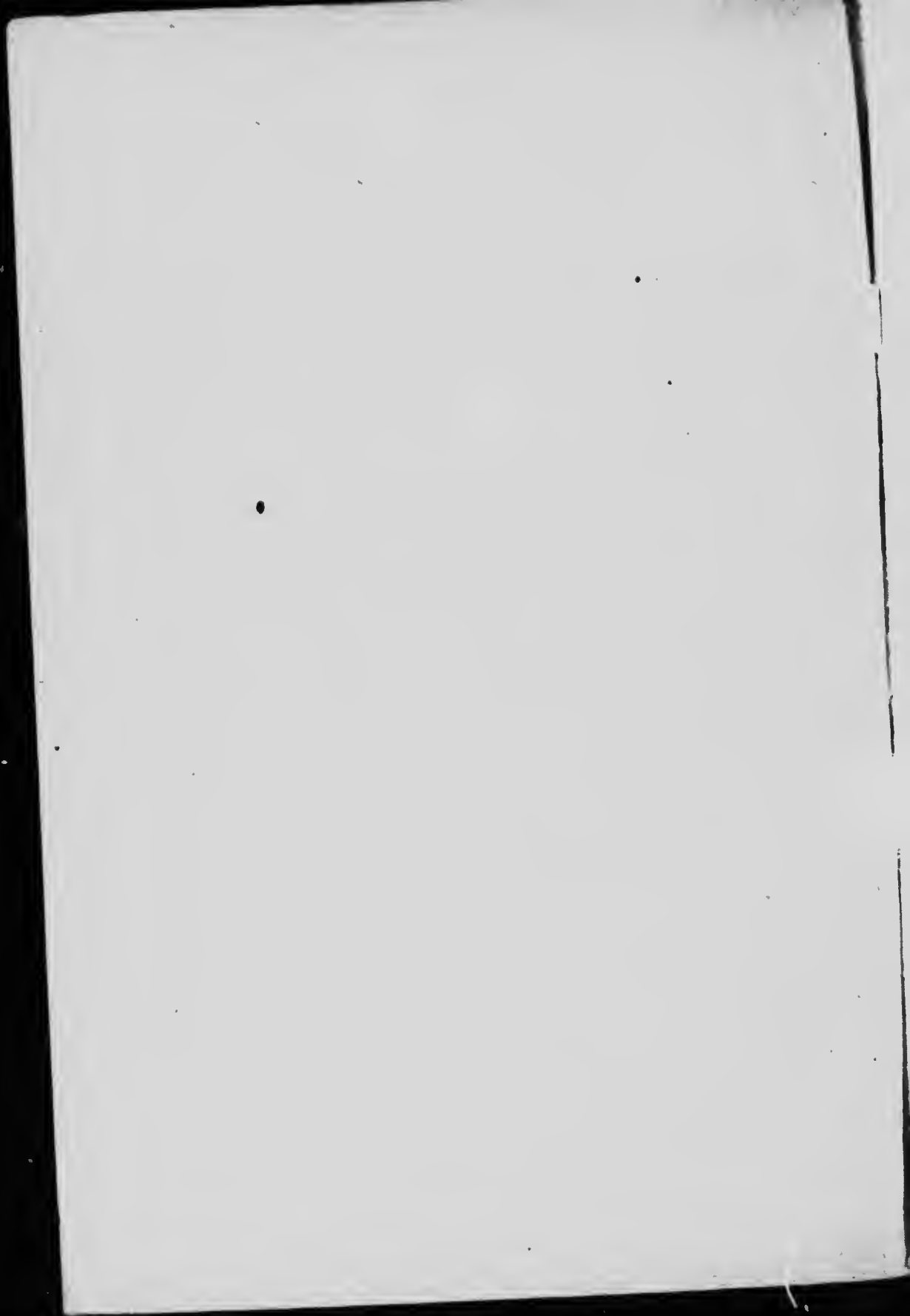
WITH INDEX AND MAP SHOWING ALL
WORK PREVIOUSLY PUBLISHED

PUBLICATION No. 4



OTTAWA
L. DE LABROQUERIE TACHÉ
PRINTER TO THE KING'S MOST EXCELLENT MAJESTY

1919



DEPARTMENT OF THE INTERIOR, CANADA
Hon. ARTHUR MEIGHEN *Minister* N. W. CORY, *Deputy Minister.*

GEODETIC SURVEY OF CANADA
NOEL OGILVIE, *Superintendent*

PRECISE LEVELLING

CERTAIN LINES IN ONTARIO and QUEBEC

WITH INDEX AND MAP SHOWING ALL
WORK PREVIOUSLY PUBLISHED

By
F. B. REID, Supervisor of Levelling

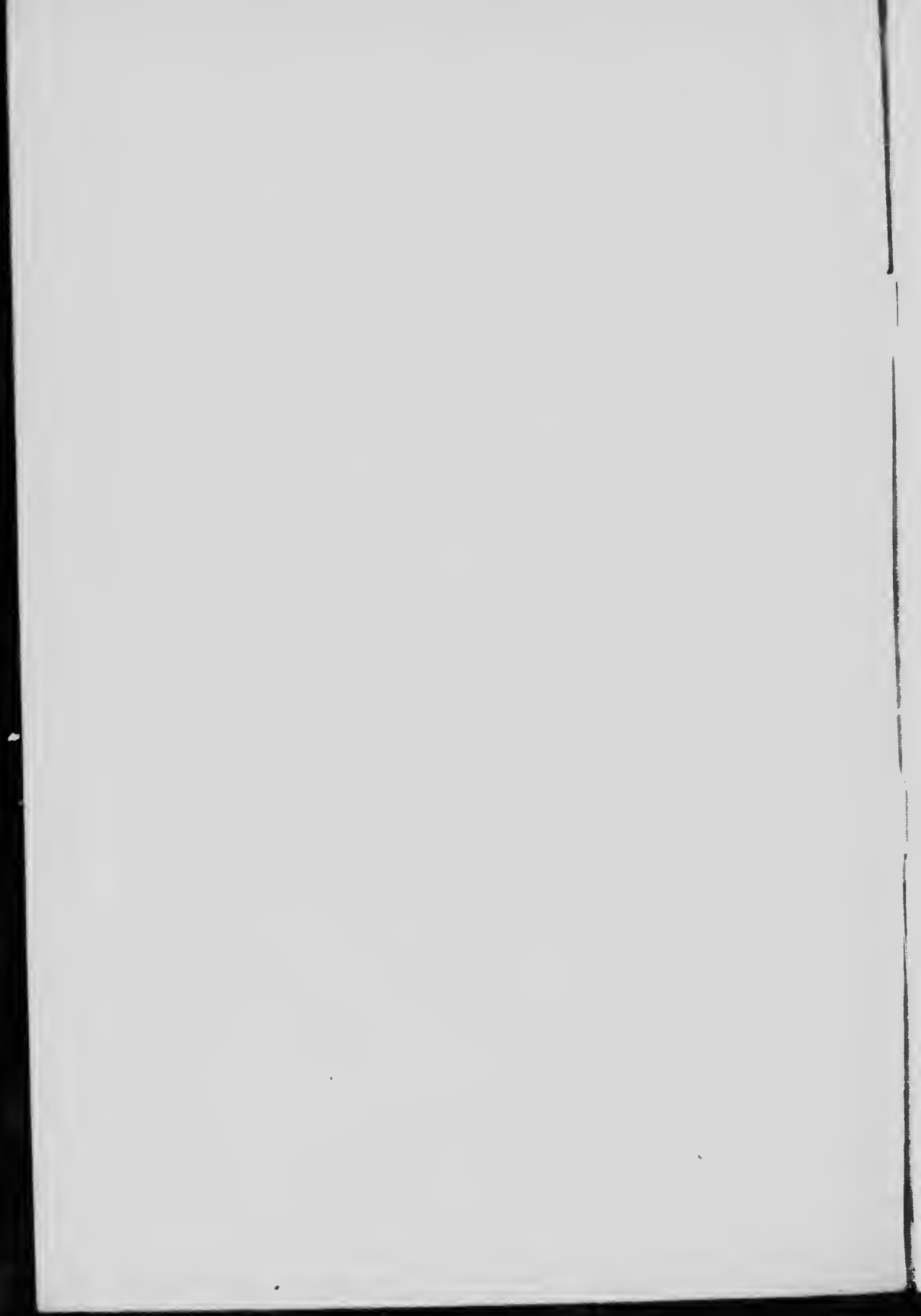
PUBLICATION No. 4



OTTAWA
J. DE LABROQUERIE TACHÉ
PRINTER TO THE KING'S MOST EXCELLENT MAJESTY

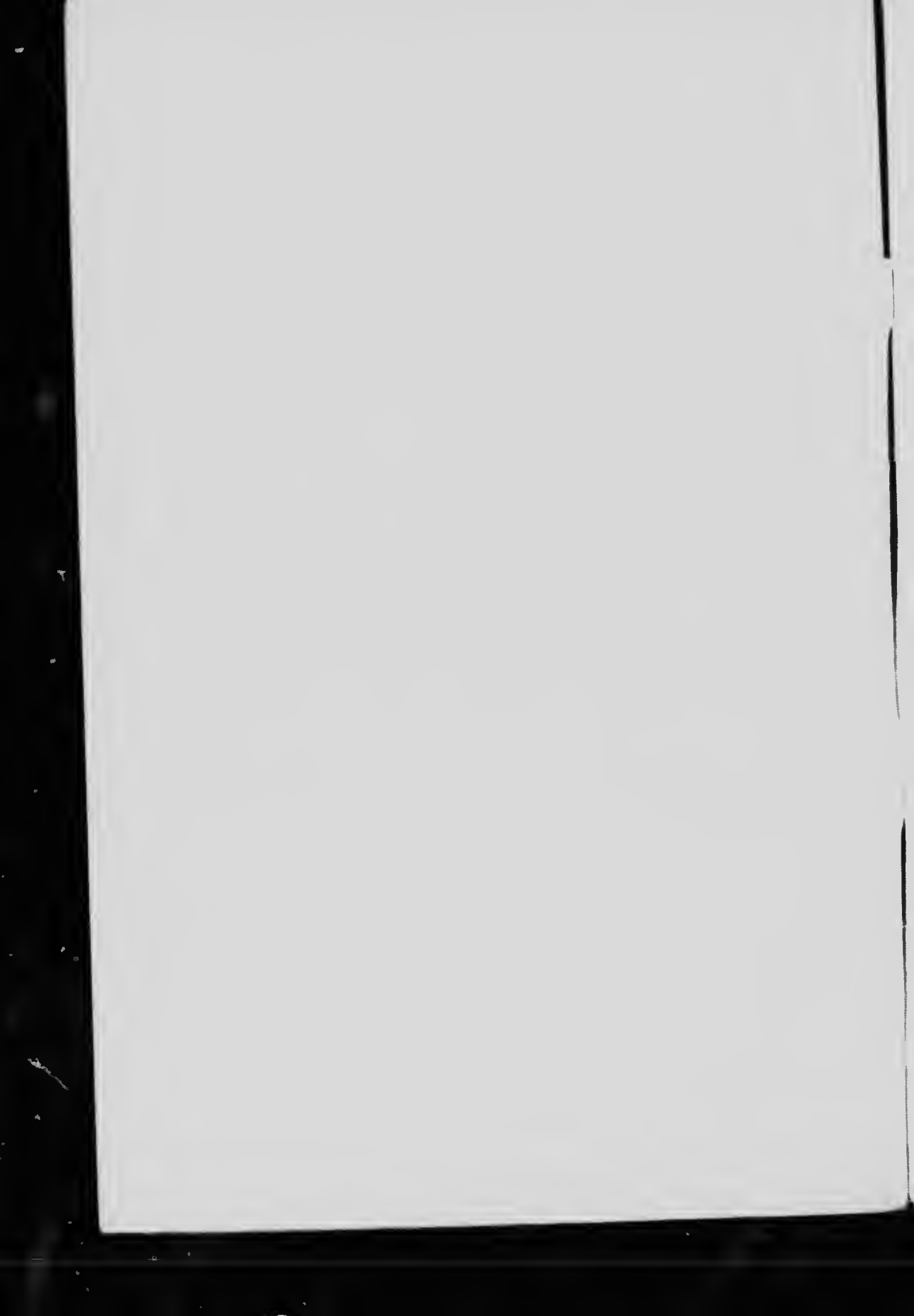
1919

56488-1



CONTENTS

	PAGE.
Introduction.....	5
Description of Bench-Marks:—	
Montreal to Hull, Que.....	7
St. Martin Junction to Three Rivers, Que.....	9
Grenville, Que., to Prescott, Ont.....	10
Ivanhoe to Toronto, Ont.....	13
Bethany to Port Hope, Ont.....	15
Myrtle to Whitby, Ont.....	16
North Toronto to Mimico, Ont.....	18
Elevations, Table of.....	18
Rail Elevations.....	25
Index.....	29
Map.....	43



INTRODUCTION.

This publication contains the results of Precise Levelling by the Geodetic Survey of Canada for certain lines in the provinces of Ontario and Quebec. Precise levelling results previously issued to the public are contained in six "Publications of the Dominion Observatory", as follows:—

Vol. I, No. 2, issued 1912*	Vol. II, No. 1, issued 1915
Vol. I, No. 3, " 1913	Vol. III, No. 3, " 1916
Vol. I, No. 8, " 1914	Vol. III, No. 8, " 1917

and in Publication No. 1 of the Geodetic Survey of Canada. All the above publications are now in the charge of the Superintendent of the Geodetic Survey and may be had upon application to him.

The present work is arranged in the same general form as the previous ones, with the results of the levelling set forth in three tables. The index and map included herein are complete for all the levelling previously published as well as that in the present publication; the index indicates in which publication descriptions and elevations of bench-marks previously published may be found.

Table I indicates the routes followed between terminal points and gives complete descriptions of all bench-marks established along these routes.

Table II shows in the first two columns the numbers of the bench-marks; in the third and fourth columns the approximate distance (in miles) between bench-marks, and from the initial bench-mark of the line; the fifth and sixth columns (headed "Discrepancy") give the difference (in feet) between the forward levelling and the backward levelling for each section between bench-marks and the accumulated difference from the initial bench-mark. The seventh column gives the elevations of the bench-marks shown in the second column; for convenience, these bench-marks are repeated (in the eighth column) in order that the number of any bench-mark and its elevation may be in adjoining columns. In this table are shown also the elevations determined by the Geodetic Survey of Canada for certain bench-marks established by other surveys and connected with the former.

Table III shows the elevations at railway stations and at crossings of intersecting railways; also on the bridges over rivers and lakes and the more important streams. Rail elevations were in all cases taken on top of the rail, in front of the telegraph office at telegraph stations and opposite the shelter or platform at flag-stations.

The results are given for the following lines:—

1. Montreal to St. G. Que.
2. St. Martin Junction to Three Rivers, Que.
3. Grenville, Que., to Prescott, Ont.
4. Ivanhoe to Toronto, Ont.
5. Bethany to Port Hope, Ont.
6. Myrtle to Whitby, Ont.
7. North Toronto to Mimico, Ont.

Line 1 starts from one of the bench-marks on the Montreal loop-line (last year's publication) and terminates at a previously established bench-mark at Hull; the closing error of the circuit formed by the two lines from Rouse Point to Hull is 0.250 foot—the difference between the two observed elevations for the junction bench-mark at Hull. In the table of elevations given herewith this closing error has been distributed uniformly along the line between St. Martin Junction and Hull at the rate of a little more than .002 foot per mile.

* Levelling in Yukon Territory only.

Lines 2 and 3 are branches from line 1. Line 3 closes on the original Rouse Point-Toronto line at Prescott, having already intersected the same line at St. Polycarpe Junction and the Finch-Cornwall line at Cornwall. The three links thus formed have been fitted in with the old levelling so as to eliminate the discrepancies at the junction bench-marks.

Line 4 completes the Kempton-Toronto line, the results for which, as far west as Ivanhoe, were published in 1917. Lines 5 and 6 form connections between this and the earlier levelling along the north shore of lake Ontario. Line 7 is a short line running through the suburbs of the city of Toronto; taken in conjunction with the adjacent levelling done several years previously it completes a loop around the western and northwestern portions of the city. The closing errors of lines 4, 5, 6 and 7 have all been disposed of by distributing them as in line 1.

The policy of dispersing the closing errors or fitting the new levelling to the old has been adopted for this year's lines by reason of the fact that all the lines (with the exception of No. 2) form connections between levels which were previously well established and had been published. A proper accordance between all the bench-marks cannot be had until an adjustment is made of the entire net in eastern Canada, but the levelling has now reached a stage where it seems better—pending an adjustment—to eliminate the closing errors and avoid discordant elevations of junction bench-marks with the resulting inconvenience to engineering projects, it being reasonably certain that such closing errors are caused by the ordinary accidental and systematic errors in the levelling and not by any gross errors.

In Table II the observed elevation of each junction bench-mark has been shown, as a matter of interest, as well as the adopted elevation.

The standard bench-mark consists of a copper bolt, three quarters of an inch in diameter and four inches long, stamped on the end with the letters "G.S.C., B.M." (Geodetic Survey of Canada, Bench-Mark). The bolt is sunk horizontally in rock or masonry so that only the circular end is visible; the number of the bench-mark is stamped on this end as well as the letters mentioned above, and a horizontal chisel line is cut, upon which the elevation is taken. At certain points concrete bench-mark piers have been built; these project from six inches to one foot above the ground and extend below the frost line; in all piers built previous to 1917 the copper bolt upon which the elevation was taken was placed horizontally in a side of the pier, about nine inches below the top. In 1917 a new design was adopted, the bolt being placed vertically in the top of the pier. The description indicates in each case the position of the bolt.

TABLE I

BENCH-MARKS BETWEEN MONTREAL (MILE END) AND HULL, QUE., VIA CANADIAN PACIFIC RAILWAY.

Elevations on page 18.

Note.—These descriptions are written with the assumption that the railway runs in a north-westerly direction from Mile End to Ste. Thérèse, and thence westerly to a point about 2½ miles from Hull.

- 826 In square concrete culvert under Canadian Pacific railway, 1½ miles northwest of Mile End station and 1,600 feet northwest of north line of Baby street, Montreal. Southeast end of northeast face of culvert.
- 827 In square concrete culvert under Grand Trunk railway, immediately south of junction with Canadian Pacific railway at Jacques Cartier Junction and at mileage 9.4 from Montreal (Place Viger station). North end of east face of culvert.
- 828 In long steel truss bridge over rivière-des-Prairies, between Bordeaux and Laval Rapides, on Canadian Pacific railway. South retaining wall, south east end of southwest face, fourth course of stonework below top.
- 829 In concrete footing of semaphore beside Quebec line of Canadian Pacific railway, about 800 feet northeast of station house at St. Martin Junction. West face of footing (facing Montreal-Hull track), 10 inches below top.
- 830 In top of concrete bench-mark pier, 2½ miles northwest of St. Martin Junction, 200 feet southeast of mile post 15 from Montreal and 8 feet northeast of southwest line of Canadian Pacific railway right of way. Also 335 feet southeast of a pair of battery boxes connected with electric block system.
- 831 In Canadian Pacific railway bridge over rivière-des-Milles Îles, ¼ mile northwest of Ste. Rose and at mileage 17.4 from Montreal. South retaining wall, southwest face, second course of stonework below top.
- 832 In Roman Catholic church at Ste. Thérèse. Front (or west) wall, first course of stonework below water table course, 18 inches from southwest corner of building.
- 833 In square stone and concrete culvert under Canadian Pacific railway, 3 miles west of Ste. Thérèse and at mileage 25.6 from Montreal. East end of north face of culvert.
- 834 In square stone and concrete culvert under Canadian Pacific railway, 1½ miles east of St. Augustin and at mileage 25.6 from Montreal. East end of north face of culvert, third course of stonework below top.
- 835 In square stone and concrete culvert under Canadian Pacific railway, 1½ miles west of St. Augustin and at mileage 28.7 from Montreal—250 feet east of St. Augustin west mile board. South face of culvert, immediately west of water-passage.
- 835-A In plate girder bridge immediately west of Ste. Scholastique station, on Canadian Pacific railway. Concrete retaining wall behind west abutment, north end of east face, 32 inches above bridge seat.
- 836 In Roman Catholic church at Ste. Scholastique. Front (or south) wall, third course of stonework above water table course, 10 feet from southeast corner of building.
- 837 In top of concrete bench-mark pier, 1½ miles west of St. Hermas, 6 feet south of north line of Canadian Pacific railway right of way and between third and fourth telegraph poles west of mile post 39 from Montreal—100 feet east of a farm crossing.
- 838 In lachute post office. East (side) wall, first course of stonework below water table course, directly above first basement window from rear of building.
- 839 Destroyed.
- 840 In west face of small boulder, 1½ miles west of Staynerville, 10 feet north of south line of Canadian Pacific railway right of way and at eleventh telegraph pole west of mile post 59 from Montreal—150 feet east of west end of first curve west of Staynerville.
- 841 In square stone (double) culvert under Canadian Pacific railway, 470 feet east of road crossing at Maguette and at mileage 51.7 from Montreal. West end of south face of coping on south end of culvert.
- 842 In plate girder bridge on Canadian Pacific railway, ¼ mile east of Grenville. Concrete retaining wall behind east stone abutment, north end of west face, 16 inches above bridge seat.

Geodetic Survey of Canada

- 843 In concrete arch culvert under Canadian Pacific railway, $\frac{1}{2}$ mile east of Grenville and at mileage 57.15 from Montreal. West end of south face of culvert, 14 inches below top.
- NOTE.—For bench-mark in Grenville Roman Catholic church see line from Grenville to Prescott.
- 844 In small stone and concrete culvert under Canadian Pacific railway, $1\frac{1}{2}$ miles west of Calumet and at mileage 61.2 from Montreal. South face of culvert.
- 845 In small stone and concrete culvert under Canadian Pacific railway, $1\frac{1}{2}$ miles east of Pointe-au-Chêne and at mileage 63.6 from Montreal. North face of culvert.
- 846 In deck truss bridge over Little Salmon river, $2\frac{1}{2}$ miles west of Pointe-au-Chêne and at mileage 67.2 from Montreal. Northeast retaining wall, west end of north face, first course of stonework below coping.
- 847 In Fassett Lumber company's office, directly opposite Fassett station. East concrete foundation wall, 10 inches below woodwork and 14 inches from southeast corner of building.
- 848 In square stone and concrete culvert under Canadian Pacific railway, $\frac{1}{2}$ mile east of Montebello and at mileage 73.9 from Montreal. West end of south face of culvert.
- 849 In stone and concrete arch culvert under Canadian Pacific railway, $\frac{1}{2}$ mile west of Montebello and 200 feet east of mile post 75 from Montreal. Northeast retaining wall, east end of north face, third course of stonework below top.
- 850 In shallow rock cut on Canadian Pacific railway, $\frac{1}{2}$ mile east of Papineauville station, 220 feet west of easterly switch of passing track and 330 feet east of an old stone culvert. North side of cut, near centre.
- 850-A In flat outcrop of rock, 1 mile west of Papineauville and 1 foot north of north line of Canadian Pacific railway right of way—opposite three farm buildings. Copper bolt set vertically, 40 feet west of a gate in right of way fence and 100 feet east of mile post 80 from Montreal.
- 851 In square stone and concrete culvert under Canadian Pacific railway, $2\frac{1}{2}$ miles west of Papineauville and at mileage 81.4 from Montreal. West abutment, north face, fourth course of stonework below top.
- 852 In small rock cut on Canadian Pacific railway, $1\frac{1}{2}$ miles west of Plaisance and 360 feet west of mile post 85 from Montreal—the second rock cut west of bridge over Petite Nation river. South side of cut, near east end.
- 852-A In large mass of rock, 2 miles west of Plaisance, 450 feet north of north line of Canadian Pacific railway right of way and at mileage 85.7 from Montreal—directly behind an old barn. West face of rock, about 35 feet from north end.
- 853 In small stone and concrete culvert under Canadian Pacific railway, $3\frac{1}{2}$ miles east of Thurso and at mileage 86.9 from Montreal. East end of north face of culvert.
- 854 In Roman Catholic church at Thurso. West (side) wall, 54 feet from front of building and about 2 feet above ground.
- 855 In top of concrete bench-mark pier, 1 mile west of Lochaber flag-station, 8 feet south of north line of Canadian Pacific railway right of way and 12 feet east of mile post 95 from Montreal—about 20 feet west of a small stone culvert.
- 856 In stone and concrete culvert under Canadian Pacific railway, $1\frac{1}{2}$ miles east of Buckingham Junction and at mileage 98.6 from Montreal. East end of south face of culvert.
- 857 In stone and concrete culvert under Canadian Pacific railway, $\frac{3}{4}$ mile west of Buckingham Junction and at mileage 100.6 from Montreal. West end of north face of culvert, third course of stonework below top.
- 858 In small stone and concrete culvert under Canadian Pacific railway, $\frac{1}{2}$ mile west of Angers and at mileage 104.2 from Montreal. Centre of south face of culvert.
- 859 In large stone and concrete arch culvert under Canadian Pacific railway, $2\frac{1}{2}$ miles west of Angers, and at mileage 106.3 from Montreal. North-east retaining wall, east end of north face, fourth course of stonework below top.
- 860 In steel truss bridge over Blanche river, 1,000 feet east of East Templeton station, on Canadian Pacific railway. Southwest retaining wall, south face, 30 inches west of rear (or west face) of west abutment and in third course of stonework below top.
- 861 In Roman Catholic church at Ste. Rose-de-Lima, about $\frac{1}{2}$ mile north of East Templeton station. West wall of westerly transept, 8 feet 6 inches from north wall and directly above first basement window north of a small doorway.
- 862 In small stone and concrete culvert under Canadian Pacific railway, $1\frac{1}{2}$ miles east of Gatineau flag-station and at mileage 112.6 from Montreal. North face of culvert.

- 862-A In top of a stone monument, 1½ miles east of Gatineau flag-station, 10 feet south of south line of Canadian Pacific railway right of way and at mileage 113.1 from Montreal—3 feet west of west line of road between lots 22 and 23, township of Templeton.
- 863 In Canadian Pacific railway bridge over Gatineau river, 2½ miles northeast of Hull. West face of east abutment, 6 feet from north end of abutment, and in nineteenth course of stonework below top.
- 864 In Roman Catholic church at Pointe Gatineau. West (side) wall, 15 feet from face of buttress at southwest corner of building and in water table course of stonework.
- 462 In cement storehouse at Canada Cement company's plant 1½ miles north of Hull, beside Canadian Pacific railway. East wall of storehouse (a large concrete building), east face of most southerly buttress, 1 foot above ground and 95 feet from Canadian Pacific railway's Ottawa-Maniwaki track.

BENCH-MARKS BETWEEN ST. MARTIN JUNCTION AND THREE RIVERS, QUE.,
VIA CANADIAN PACIFIC RAILWAY.

Elevations on page 19.

- 684-B In square stone and concrete culvert under Canadian Pacific railway, 1,120 feet southwest of Le Cap flag-station and at mileage 0.7 from St. Martin Junction. Northwest face of culvert, 9 inches below top and 30 inches from side of water-passage.
- 685-B In square stone and concrete culvert under Canadian Pacific railway, 2¼ miles southwest of St. Vincent-de-Paul and at mileage 2.6 from St. Martin Junction. Southeast face of culvert, 14 inches below top and 8 inches from side of water-passage.
- 686-B In tile culvert under Canadian Pacific railway, ¼ mile southwest of St. Vincent-de-Paul station and at southwesterly switch of passing-track. Southeast concrete face-wall of culvert.
- 687-B In Canadian Pacific railway bridge over rivière-des-Mille Îles, between De Sales and Terrebonne. Stone retaining wall behind southwest abutment, southeast end of northeast face, 34 inches above bridge seat.
- 688-B In Roman Catholic church at De Sales. Front (or north) wall, north face of corner stone at northwest corner of building, first course above water table course.
- 689-B In Roman Catholic church at Mascouche. Front (or east) wall, 4 feet from southeast corner of building and in first course of stonework below water table course.
- 690-B In small plate girder bridge on Canadian Pacific railway, 1½ miles northeast of Mascouche and at mileage 15.5 from St. Martin Junction. Stone retaining wall behind southwest abutment, southeast face, second course below coping.
- 691-B In stone and concrete culvert under Canadian Pacific railway, 1,200 feet northeast of Cabane Ronde flag-station and at mileage 17.5 from St. Martin Junction. Northeast end of northwest face of culvert, 13 inches below top.
- 692-B In concrete arch culvert under Canadian Pacific railway, 1¼ miles southwest of L'Epiphanie and at mileage 21.3 from St. Martin Junction. Northeast end of southeast face of culvert, 1 foot below top.
- 693-B In Roman Catholic church at L'Epiphanie. Front (or south) wall, 30 inches from east side of buttress at southwest corner of building and in water table course of stonework.
- 694-B In plate girder bridge over St. Esprit river, 1½ miles northeast of L'Epiphanie and at mileage 24.5 from St. Martin Junction. Stone retaining wall behind northeast abutment, northwest end of southwest face, third course above bridge seat.
- 695-B In steel truss bridge over L'Assomption river, 1 mile southwest of Vacluse flag-station. Stone retaining wall behind southwest abutment, southeast end of northeast face, second course above bridge seat.
- 696-B In square stone and concrete culvert under Canadian Pacific railway, 2 miles northeast of Lavaltrie and at mileage 32.4 from St. Martin Junction. Northeast end of northwest face of culvert, 8 inches below top.
- 697-B In square stone and concrete culvert under Canadian Pacific railway, 1,200 feet northeast of Lanoraie station. Southwest end of southeast face of culvert, 8 inches below top.
- 698-B In plate girder bridge over Chaloupe river, 1 mile southwest of Berthier Junction and at mileage 42.9 from St. Martin Junction. Stone retaining wall behind northeast abutment, northwest end of southwest face, second course below concrete coping.

- 699-B In large square stone and concrete culvert under Canadian Pacific railway, 1½ miles southwest of St. Cuthbert and at mile post 46 from St. Martin Junction. Southeast face of culvert, 38 inches below top and 15 inches from side of water-passage.
- 700-B In plate girder bridge over Chicot river, 800 feet southwest of St. Cuthbert station. Stone retaining wall behind northeast abutment, northwest end of southwest face, second course above bridge seat.
- 701-B In square stone and concrete culvert under Canadian Pacific railway, 2 miles southwest of St. Barthélemi and at mileage 50.2 from St. Martin Junction. Southwest end of southeast face of culvert, 1 foot below top.
- 702-B In small plate girder bridge on Canadian Pacific railway, 1 mile northeast of St. Barthélemi and at mileage 53.2 from St. Martin Junction. Southwest abutment, northwest face, first course of stonework below bridge seat.
- 703-B In Canadian Pacific railway bridge over Maskinongé river, 1,000 feet southwest of Maskinongé station. Stone and concrete retaining wall behind southwest abutment, southeast end of northeast face, 4 feet 8 inches above bridge seat.
- 704-B In Roman Catholic church at Maskinongé. Front (or east) wall, 4 feet from southeast corner of building and in water table course of stonework.
- 705-B In post office at Louiseville. Front wall, 11 feet 6 inches west of west wall of clock tower, in cnp stone over a basement window.
- 706-B In Canadian Pacific railway bridge over rivière-du-Loup, ¼ mile northeast of Louiseville station. Stone retaining wall behind northeast abutment, northwest end of southwest face, third course above bridge seat.
- 707-B In square stone and concrete culvert under Canadian Pacific railway, 2 miles southwest of Yamachiche and at mileage 65.4 from St. Martin Junction. Southwest end of southeast face of culvert, 9 inches below top.
- 708-B In Roman Catholic church at Yamachiche. Front (or north) wall, 4 feet from northeast corner of building and in second course of stonework above concrete floor of portico.
- 709-B In plate girder bridge over Yamachiche river, 1½ miles northeast of Yamachiche and at mileage 68.8 from St. Martin Junction. Stone and concrete retaining wall behind northeast abutment, northwest end of southwest face, second course above bridge seat.
- 710-B In plate girder bridge on Canadian Pacific railway, 3 miles southwest of Pointe-du-Lac and at mileage 71.4 from St. Martin Junction. Stone and concrete retaining wall behind southwest abutment, southeast end of northeast face, 42 inches above bridge seat.
- 711-B In plate girder bridge on Canadian Pacific railway, ½ mile southwest of Pointe-du-Lac and at mile post 74 from St. Martin Junction. Stone retaining wall behind southwest abutment, southeast end of northeast face, second course above bridge seat.
- 712-B In square stone and concrete culvert under Canadian Pacific railway, 4 miles southwest of Three Rivers and at mileage 78.4 from St. Martin Junction. Northeast end of northwest face of culvert, 6 inches below top.
- 713-B In Le Jeune street steel bridge over Canadian Pacific railway, ½ mile south of Three Rivers station. The bench pier is in the square concrete pier which is at the south side of the bridge and between main line track and Grand Mère branch; it faces the former track and is about 2 feet above ground.
- 714-B In library immediately behind and connected with Roman Catholic cathedral at Three Rivers. West side wall, 49 inches south of Royale street wall and in third course of stonework below water table course.
- 715-B In post office at Three Rivers. West side wall, second course of stonework below water table course, 5 feet south of wall facing Notre Dame street and 12 feet north of side entrance to Inland Revenue offices.
- 716-B In armoury at Three Rivers. Front wall—facing St. Francois-Xavier street; third course of stonework below brickwork, between second and third basement windows south of main entrance.
- BENCH MARKS BETWEEN GRENVILLE, QUE., AND PRESCOTT, ONT., VIA CANADIAN NORTHERN RAILWAY TO HAWKESBURY, GRAND TRUNK RAILWAY TO ST. POLYCARPE JUNCTION, CANADIAN PACIFIC RAILWAY TO CORNWALL, AND GRAND TRUNK RAILWAY TO PRESCOTT.

Elevations on page 20.

Note—These descriptions are written with the assumption that the railways run in a southerly direction from Grenville to Glen Robertson, thence southeasterly to St. Polycarpe Junction, thence southwesterly to Cornwall, and thence westerly to Prescott.

- *67 In Roman Catholic church at Grenville. East side wall, 13 feet south of south wall of transept and in water table course of stonework.

- 866 In Canadian Northern railway bridge over Grenville canal, immediately north of bridge over Ottawa river between Grenville and Hawkesbury. Stone retaining wall behind north abutment, east end of south face, second course above bridge seat.
- 867 In Main street subway under Canadian Northern railway in the town of Hawkesbury. North concrete abutment of subway, centre of south face, about 2 feet above street level.
- 868 In Roman Catholic church at Hawkesbury. East wall of main tower (at northeast corner of church), 8 feet from south wall of tower and in second course of stonework below water table course.
- 869 In post office at Hawkesbury. Front wall, second course of stonework below brickwork, 2 feet west of west wall of vestibule at easterly entrance.
- 870 In southwest face of large boulder, 4 miles south of Hawkesbury, 135 feet east of east line of Grand Trunk railway right of way, 300 feet north of mile post 17 from Glen Robertson and 440 feet north of private crossing leading to home and barns of T. Sproule.
- 871 In square concrete culvert under Canadian Pacific railway, 0.4 mile east of Grand Trunk railway diamond crossing near Vankleek Hill and at mileage 32.8 from Vaudreuil. West end of south face of culvert.
- 872 In flat mass of rock, 2 miles south of Vankleek Hill, 21 feet east of west line of Grand Trunk railway right of way and 1,260 feet north of a diagonal road crossing. Coping bolt set vertically.
- 873 In Grand Trunk railway bridge over Rigaud river, 1 mile north of Dalkeith. West face of concrete retaining wall behind north abutment, 3 feet 9 inches above bridge seat.
- 874 In a galvanized iron sheathed storehouse on east side of Grand Trunk railway, 350 feet south of Dalkeith station. West concrete foundation wall, 1 foot below sheathing and 27 feet from northwest corner of building.
- 875 In east face of large granite boulder, 870 feet south of Glen Sandfield flag-station and 15 feet east of west line of Grand Trunk railway right of way.
- 876 In top of concrete bench mark pier, 3 feet west of east line of Grand Trunk railway right of way (Hawkesbury-Glen Robertson line), 172 feet north of switch stand at north end of Glen Robertson Y., and 1,040 feet north of main line of Ottawa division.
- 877 In Roman Catholic church at Glen Robertson. East (side) wall, 35 feet from front of building and in water table course of stonework.
- 878 In open culvert under Grand Trunk railway, 2 miles southeast of Glen Robertson and at mileage 70.15 from Alburgh Junction. Southeast stone and concrete abutment, northeast end of northwest face, 6 feet below bridge seat.
- 879 In small plate girder bridge on Grand Trunk railway, $\frac{1}{2}$ mile northwest of Ste. Justine. Southwest face of west concrete retaining wall, 30 inches below top and 5 feet 6 inches from northwest end of retaining wall.
- 880 In square concrete culvert under Grand Trunk railway, $1\frac{1}{4}$ miles northwest of St. Polycarpe Junction and at mileage 64.6 from Alburgh Junction. Southwest face-wall of culvert, 18 inches below top and 4 feet 6 inches from northwest end of face-wall.
- 881 In top of concrete bench-mark pier, 3 feet northeast of southwest line of Grand Trunk railway right of way, 2,060 feet northwest of diamond crossing of Canadian Pacific railway at St. Polycarpe Junction and 386 feet northwest of distant semaphore of interlocking plant.
- 92 In small open culvert under Grand Trunk railway, $\frac{1}{4}$ mile southeast of St. Polycarpe Junction. Southwest face of northwest abutment, fourth course of stonework below top.
- 93 In Canadian Pacific railway bridge over Delisle river, $\frac{1}{2}$ mile west of St. Polycarpe Junction. West face of stone coping on southwest abutment of bridge.
NOTE.—Check levelling in 1918 indicates that the abutment has shifted slightly since the original levelling in 1906.
- 882 In Roman Catholic church at St. Polycarpe. North face of pilaster at northwest corner of building, second course of stonework below water table course.
- 883 In concrete arch culvert under Cornwall branch of Canadian Pacific railway, $1\frac{1}{4}$ miles southwest of St. Polycarpe Junction and 1,400 feet southwest of junction switch at Soulanges. Concrete coping on northwest end of culvert, northeast end of northwest face of coping.
- 884 In Roman Catholic church at St. Téléphore. West (side) wall, 19 feet from front wall of building and about 2 feet above ground.
- 885 In square concrete culvert under Canadian Pacific railway, 2 miles northeast of Bridge End and at mileage 3.3 from Soulanges. Southwest abutment of culvert, southeast end of northeast face of abutment.

- 886 In plate girder bridge over Baudet river, $\frac{1}{2}$ mile northeast of Bridge End, on Canadian Pacific railway. Concrete retaining wall behind southwest abutment, southeast end of northeast face, 21 inches above bridge seat.
- 887 In square concrete (double) culvert under Canadian Pacific railway, $\frac{1}{2}$ mile northeast of North Lancaster and at mileage 8.4 from Soulanges. Northeast end of northwest face of culvert, 10 inches below top.
- 888 In square concrete culvert under Canadian Pacific railway, $1\frac{1}{2}$ miles northeast of Glen Gordon flag-station and at mile post 11 from Soulanges. Southwest end of southeast face of culvert.
- 889 In square concrete culvert under Canadian Pacific railway, $\frac{1}{2}$ mile southwest of Glen Gordon flag-station and at mileage 13.3 from Soulanges. Northeast end of northwest face of culvert.
- 890 In plate girder bridge over Raisin river, 700 feet southwest of Williamstown station, on Canadian Pacific railway. Concrete retaining wall behind southwest abutment, southeast end of northeast face, 40 inches above bridge seat.
- 891 In small square concrete culvert under Canadian Pacific railway, $\frac{1}{2}$ mile northeast of Glenbrook flag-station and at mileage 19.5 from Soulanges. Centre of southeast face of culvert.
- 892 In square concrete culvert under Canadian Pacific railway, $4\frac{1}{2}$ miles northeast of Cornwall and at mileage 23.3 from Soulanges. Northeast end of northwest face of culvert.
- 893 In top of concrete bench-mark pier, 240 feet northeast of diamond crossing of Grand Trunk and Canadian Pacific railways $\frac{1}{2}$ mile east of G.T.R. station, Cornwall. The pier is 4 feet southeast of northwest line of C.P.R. right of way and 80 feet northeast of north fence of road running parallel to and on north side of G.T.R.
- 894 In Grand Trunk steel water tank at Cornwall station. Northeast face—5 inches below top—of northwesterly concrete footing.
- 490 In post office at Cornwall. South wall, 32 inches west of west wall of clock tower and in second course of stonework below water table course.
- 895 In large square stone and concrete culvert under Grand Trunk railway, $\frac{1}{2}$ mile west of MilleRoches and at mileage 261.1 from Toronto. East end of north face of culvert.
- 896 In large square stone and concrete culvert under Grand Trunk railway, 1 mile west of Moulinette flag-station and at mileage 259.3 from Toronto. West end of south face of culvert.
- 897 In stone arch bridge over Hoople creek 850 feet west of Wales station, on Grand Trunk railway. North face of east abutment, 4 feet from west face of abutment and in seventh course below coping.
- 898 In north face of flat limestone boulder, $2\frac{1}{2}$ miles west of Wales and at mileage 254.4 from Toronto—immediately north of north line of Grand Trunk railway right of way and at the east side of a farm crossing.
- 899 In stone arch culvert under Grand Trunk railway, 850 feet west of Farran Point flag-station and at mileage 252.1 from Toronto. Southeast wing wall of culvert, southeast face of top course of stonework.
- 900 In large open culvert under Grand Trunk railway, $\frac{1}{2}$ mile west of Aultsville and at mileage 249.25 from Toronto. Northwest face of northwest wing wall, first course of stonework above seat of I-beams.
- 901 In stone monument erected in 1895 to commemorate the battle of Crysler's Farm; this is on the north bank of St. Lawrence river about $3\frac{1}{2}$ miles west of Aultsville. The bench-mark is in north face of stone base of monument.
- 902 In stone arch culvert under Grand Trunk railway, $3\frac{1}{2}$ miles east of Morrisburg and at mileage 245.1 from Toronto. Southeast wing wall, second course of stonework above floor of culvert, first stone from mouth of water-passage.
- 903 In plate girder bridge on Grand Trunk railway, 1 mile east of Morrisburg. Northwest face of northeast retaining wall, sixth course of stonework below bridge seat, fourth stone from north end of east abutment.
- 904 In Grand Trunk station house at Morrisburg. Front (or north) wall, immediately east of westerly doorway and in second course of stonework above water table.
- 905 In east wall of vestry of St. James Anglican church, Morrisburg. In water table course of stonework, directly beneath a pair of windows facing street.
- 906 In large square stone and concrete culvert under Grand Trunk railway, 3 miles west of Morrisburg and at mileage 238.3 from Toronto—200 feet west of a highway crossing. East stone abutment, north end of west face, third course below concrete top of culvert.

- 907 In top of concrete bench-mark pier, 1 mile east of Iroquois, 5 feet north of south line of Grand Trunk railway right of way, 26 feet east of a farm crossing and 690 feet east of east end of a plate girder bridge at mileage 235.65 from Toronto.
- 908 In Grand Trunk station house at Iroquois. Front (or north) wall, immediately east of westerly doorway and in second course of stonework above water table.
- 909 In small open culvert under Grand Trunk railway, 2½ miles east of Cardinal and at mileage 231.6 from Toronto. West stone abutment, south end of east face, third course below seat of I-beams.
- 910 In large square concrete culvert under Grand Trunk railway, 1,100 feet east of Cardinal station. South face-wall of culvert, 30 inches below top and 6 inches from west end of face-wall.
- 911 In square stone and concrete culvert under Grand Trunk railway, 3½ miles west of Cardinal and at mileage 225.9 from Toronto. West stone abutment, south end of east face, third course below concrete top of culvert.
- 912 In top of concrete bench-mark pier, 3½ miles east of Prescott and 4 feet north of south line of Grand Trunk railway right of way—directly opposite a section tool-house. Also 396 feet west of west end of a plate girder bridge at mileage 223.4 from Toronto.
- 118 In Grand Trunk railway bridge over Canadian Pacific railway (Ottawa-Prescott line), 1½ miles east of Prescott. North face of east abutment, twentieth course of stonework below bridge seat.
- 913 In custom house at Prescott. Front (or south) wall, 8 feet east of main entrance and in third course of stonework above sidewalk.
- 914 In Roman Catholic church at Prescott. West (side) wall, 25 feet from front of building and in first course of stonework below water table course.
- 119 In Grand Trunk station house at Prescott. North face of corner stone at northeast corner of building, third course above water table.

BENCH-MARKS BETWEEN IVANHOE AND TORONTO (NORTH TORONTO),
ONT., VIA CANADIAN PACIFIC RAILWAY.

Elevations on page 22.

- 187-G In square concrete culvert under Canadian Pacific railway, 2 miles west of Ivanhoe and at mileage 73.6 from Glentay. East end of north face of culvert, 1 foot below top.
- 188-G In square stone and concrete culvert under Canadian Pacific railway, 4½ miles west of Ivanhoe and 40 feet west of westerly switch of Peterson passing-track. East end of north face of culvert, 15 inches below top.
- 189-G In side of concrete bench-mark pier, ½ mile east of Bonarlaw, 5 feet south of north line of Canadian Pacific railway right of way and 776 feet east of centre line of a road crossing.
- 190-G In square concrete culvert under Canadian Pacific railway, 4½ miles west of Bonarlaw and at mileage 84.7 from Glentay. East end of north face of culvert, 9 inches below top.
- 191-G In square concrete culvert under Canadian Pacific railway at mileage 86.9 from Glentay. East end of north face of culvert.
- 192-G In square concrete culvert under Canadian Pacific railway at mileage 89.1 from Glentay. West end of south face of culvert.
- 193-G In plate girder bridge on Canadian Pacific railway, 1½ miles east of Havelock. Concrete retaining wall behind west abutment, south end of east face, 30 inches above bridge seat.
- 193-G-2 In small concrete highway bridge over a creek, about ½ mile west of Havelock station and 200 feet south of Canadian Pacific railway. West face of north abutment, 7 inches below top.
- 194-G In square concrete culvert under Canadian Pacific railway, 1 mile west of Havelock. East end of north face of culvert.
- 195-G In plate girder bridge on Canadian Pacific railway, 1½ miles east of Norwood and at mileage 4.9 from Havelock. Southeast retaining wall, south face, first course of stonework below coping.
- 196-G In grain elevator about 480 feet west of Norwood station, on south side of Canadian Pacific railway. North concrete foundation wall, 3 feet above ground and 1 foot from northeast corner of building.
- 197-G In square concrete culvert under Canadian Pacific railway, 2 miles west of Norwood and at mileage 8.2 from Havelock. West end of north face of culvert, 1 foot below top.

- 198-G In square concrete culvert under Canadian Pacific railway, 1 mile east of Indian River and at mileage 13.6 from Havelock. Centre of north face of culvert.
- 199-G In square concrete culvert under Canadian Pacific railway, $1\frac{1}{2}$ miles west of Indian River and at mileage 16.3 from Havelock—at the east line of a highway crossing. Centre of north face of culvert.
- 200-G In square concrete (double) culvert under Canadian Pacific railway, $3\frac{1}{2}$ miles west of Indian River and at mileage 18.3 from Havelock. East abutment, north end of west face, 4 feet below top of culvert.
- 201-G In square concrete culvert under Canadian Pacific railway, $3\frac{1}{4}$ miles east of Peterboro and at second telegraph pole west of mile post 21 from Havelock. Centre of south face of culvert.
- 202-G In Trent canal lift-lock at Peterboro. East tower, centre of south face, 3 feet above concrete floor at lower level.
- 203-G In armoury at Peterboro. South (or Murray street) wall, fourth course of stonework below brickwork, 2 feet from southwest corner of building.
- 204-G In Sacred Heart Roman Catholic church, Peterboro; corner of Aylmer and Romaine streets. West (side) wall, first course of stonework below water table course, between fourth and fifth buttresses from front of building.
- 205-G In top of concrete bench-mark pier, 1 mile west of Peterboro station, 3 feet south of north line of Canadian Pacific railway right of way and 370 feet west of west line of Monaghan road.
- 206-G In square concrete (double) culvert under Canadian Pacific railway, 4 miles west of Peterboro and at mileage 28.35 from Havelock. East abutment, north end of west face, 3 feet below top of culvert.
- 207-G In square concrete culvert under Canadian Pacific railway, $1\frac{1}{2}$ miles east of Cavan and at mileage 31.7 from Havelock. East end of north face of culvert, 8 inches below top.
- 208-G In subway under Canadian Pacific railway (crossing of main road between Millbrook and Cavan), $1\frac{1}{2}$ miles west of Cavan station and at mileage 34.6 from Havelock. Concrete retaining wall behind west abutment, south end of east face, 16 inches above bridge seat.
- 209-G In Canadian Pacific railway bridge over Grand Trunk railway (Millbrook-Omemee Junction line), $\frac{1}{4}$ mile east of Bethany Junction and $4\frac{1}{4}$ miles north of Millbrook. West abutment, south end of east face, thirteenth course of stonework below bridge seat.
- 210-G In plate girder bridge on Canadian Pacific railway, $\frac{1}{4}$ mile west of Bethany Junction and at mileage 39.4 from Havelock. Southwest retaining wall, south face, second course of stonework below coping.
- 211-G In triangular tile culvert under Canadian Pacific railway, 6 feet east of east wall of Manvers station house. South face of south concrete face-wall, 9 inches below top.
- 212-G In small concrete arch culvert under Canadian Pacific railway, $1\frac{1}{2}$ miles east of Pontypool and 200 feet east of mile post 44 from Havelock. Centre of north face of culvert, 1 foot below top.
- 213-G In grain elevator about 630 feet west of Pontypool station, on south side of Canadian Pacific railway. North concrete foundation wall, 20 inches above door sill and 6 feet from northeast corner of building.
- 214-G In square concrete culvert under Canadian Pacific railway, $2\frac{1}{4}$ miles west of Pontypool and at mileage 47.6 from Havelock—at the east line of a highway crossing. Centre of south face of culvert.
- 215-G In top of concrete bench-mark pier, $4\frac{1}{4}$ miles east of Burketon, 9 feet south of north line of Canadian Pacific railway right of way and 72 feet east of east line of road allowance between townships of Manvers and Cartwright—directly opposite mile post 50 from Havelock.
- 216-G In Canadian Pacific section house about 350 feet west of Burketon station. (Front) or north concrete foundation wall, 14 inches below woodwork and 15 inches east of cellar window.
- 217-G In square concrete culvert under Canadian Pacific railway, $\frac{3}{4}$ mile west of Brady flag-station and at mile post 59 from Havelock—immediately west of a highway crossing. Centre of south face of culvert.
- 218-G In concrete arch cattle-pass under Canadian Pacific railway, $2\frac{1}{4}$ miles east of Myrtle and at first telegraph pole west of mile post 61 from Havelock—immediately east of a highway crossing. West face of north face-wall of culvert, 1 foot below top.
- 219-G In Grand Trunk railway bridge over Canadian Pacific railway, $\frac{1}{4}$ mile west of Myrtle C.P.R. station and $\frac{1}{4}$ mile north of Myrtle G.T.R. station. North face of south abutment, twelfth course of stonework below bridge seat, 25 feet from west end of abutment.

- 220-G In square concrete culvert under Canadian Pacific railway, $\frac{1}{2}$ mile east of Dagmar flag-station and at mileage 66.7 from Havelock. East abutment, north end of west face, 4 feet 4 inches below top of culvert.
- 221-G In concrete arch subway under Canadian Pacific railway, $\frac{1}{2}$ mile west of Glen Major flag-station and at mileage 69.3 from Havelock. Concrete coping on south end of subway, west end of south face of coping, 1 foot below top.
- 222-G In square concrete culvert under Canadian Pacific railway, $1\frac{1}{2}$ miles east of Claremont and at mileage 71.1 from Havelock. Centre of north face of culvert.
- 223-G In square concrete (double) culvert under Canadian Pacific railway, $1\frac{1}{2}$ miles west of Claremont and at mileage 74.3 from Havelock. Near centre of south face of culvert, 15 inches below top. This is the farther west of two similar culverts about 750 feet apart.
- 224-G In large stone-arch culvert under Canadian Pacific railway, $\frac{1}{2}$ mile west of Atha Road flag-station and at mileage 76.3 from Havelock. North face of northwest retaining wall, first course of stonework below coping on north end of culvert.
- 225-G In large concrete arch culvert under Canadian Pacific railway, $1\frac{1}{2}$ miles east of Locust Hill and at mileage 78.7 from Havelock. Concrete coping on south end of culvert, west end of south face of coping, 15 inches below top.
- 226-G In Canadian Pacific water tank (now disused) at Locust Hill. Circular masonry base of tank, 9 feet to the left of the doorway and in second course of stonework below door-sill.
- 227-G In large square concrete culvert under Canadian Pacific railway, $2\frac{1}{2}$ miles west of Locust Hill and at mileage 82.3 from Havelock. East end of north face of culvert, 1 foot below top.
- 228-G In plate girder bridge on Canadian Pacific railway, 4 miles west of Locust Hill and at mileage 84.1 from Havelock. Concrete retaining wall behind west abutment, south end of east face, 3 feet above bridge seat.
- 229-G In large square concrete culvert under Peterboro subdivision of Canadian Pacific railway, $\frac{3}{4}$ mile east of Agincourt and at mileage 87.15 from Havelock. West end of north face of culvert, 10 inches below top.
- 230-G In Canadian Pacific railway bridge over Grand Trunk railway (Lindsay-Searboro Junction line), $\frac{3}{4}$ mile west of Agincourt and at mile post 97 from Trenton. Concrete retaining wall behind east abutment, south end of west face, 15 inches above bridge seat.
- 231-G In square concrete culvert under Canadian Pacific railway, $2\frac{1}{2}$ miles west of Agincourt and at second telegraph pole east of mile post 99 from Trenton. West end of south face of culvert, 8 inches below top.
- 232-G In Canadian Pacific railway's steel trestle viaduct over Little Don river and Canadian Northern railway, $2\frac{1}{2}$ miles east of Leaside. Concrete retaining wall behind east abutment, north end of west face, 30 inches above bridge seat.
- 233-G In Canadian Pacific railway's steel trestle viaduct over Don river, 1 mile east of Leaside. Concrete retaining wall behind west abutment, south end of east face, 40 inches above bridge seat.
- 234-G In Canadian Pacific railway's re-enforced concrete viaduct over ravine followed by old belt-line railway, $1\frac{1}{4}$ miles east of North Toronto station. East concrete abutment, south face, 3 feet below top.
- 235-G In Yonge street subway under Canadian Pacific railway at North Toronto station. West concrete abutment, south end of east face, 2 feet above concrete sidewalk. Also 40 feet 6 inches north of north wall of Dominion Bank.
- 189 In old Canadian Pacific station house (now disused) at North Toronto. This bench mark has been rendered inaccessible by the reconstruction of the railway.

BENCH-MARKS BETWEEN BETHANY AND PORT HOPE, ONT., VIA GRAND TRUNK RAILWAY.

Elevations on page 23.

- 915 In top of concrete bench-mark pier, 1 mile north of Millbrook, on Grand Trunk railway's Millbrook-Omamee Junction line. Pier is 10 feet east of west line of right of way and 41 feet north of intersection of west line of right of way with north line of road allowance between concessions V and VI, township of Cavan.
- 916 In armory at Millbrook. Concrete foundation of front wall, west face of buttress at west side of main entrance, 15 inches below brickwork.
- 917 In steel and concrete subway under Grand Trunk railway, $1\frac{1}{2}$ miles south of Carmel flag-station and at mileage 12.7 from Port Hope. Concrete retaining wall behind south abutment, east end of north face, 3 feet above bridge seat.

- 918 In F. Smith's (red brick) residence in the village of Campbellcroft, on north side of main road, immediately east of Grand Trunk railway. Stone foundation of east wall, 5 inches below brickwork and 10 feet from southeast corner of building.
- 919 In top of concrete bench-mark pier at Quay flag-station, 5 feet east of west line of Grand Trunk railway right of way and 56 feet north of intersection of said line with north line of road allowance between concessions IV and V, township of Hope.
- 920 In Canadian Northern railway's steel trestle viaduct over Port Hope-Peterboro line of Grand Trunk railway, 1 mile north of Port Hope (Walton street). Concrete footing of steel column on north side of C.N.R. and on west side of G.T.R. track; centre of north face of footing, 4 feet below top.
- 921 In Canadian Pacific railway's viaduct over Port Hope-Peterboro line of Grand Trunk railway in the town of Port Hope. Second concrete pier from west end of viaduct, centre of west face of pier, 18 inches above G.T.R. rails.
- 172 In Port Hope town hall. West end of south wall, fourth course of stonework above sidewalk.
- 172-A In Port Hope post office. South face of corner stone at southwest corner of building, first course above sidewalk.
- 173 In Grand Trunk station house at Port Hope Junction. West face of corner stone at northwest corner of building, first course above platform.

BENCH MARKS BETWEEN MYRTLE AND WHITBY, ONT., VIA GRAND TRUNK RAILWAY.

Elevations on page 24.

- 922 In top of concrete bench-mark pier, 1½ miles north of Brooklin, 4 feet west of east line of Grand Trunk railway right of way and 100 feet north of north line of road allowance between concessions VI and VII, township of Whitby.
- 923 In Anglican church at Brooklin, a frame building immediately east of Grand Trunk railway. West wall, 8 feet 6 inches from southwest corner of building, first course of stonework below woodwork.
- 924 In Canadian Northern railway bridge over Lyon brook, 1,100 feet west of Brooklin C.N.R. station and ¼ mile west of Grand Trunk railway diamond crossing. Concrete retaining wall behind east abutment, south end of west face, 3 feet above bridge seat.
- 925 In top of concrete bench-mark pier, 1¼ miles north of Whitby (town station), 4 feet east of west line of Grand Trunk railway right of way and 30 feet south of south line of road allowance between concessions II and III, township of Whitby.
- 926 In Whitby post office. King street wall, first course of stonework below water table course, 12 feet 6 inches west of west wall of clock tower.
- 180-A In St. John's Anglican church, ¼ mile southeast of Grand Trunk station, Whitby Junction. West end of front wall, second course of stonework above ground.
- 927 In chimney of Whitby water works pumping station on shore of lake Ontario at Port Whitby. Concrete base of chimney, centre of north face.

BENCH MARKS BETWEEN NORTH TORONTO AND MIMICO, ONT., VIA CANADIAN PACIFIC RAILWAY THROUGH WEST TORONTO, ISLINGTON AND "CANPA."

(Elevations on page 24.)

- 236-G In Spadina road subway under Canadian Pacific railway in the city of Toronto. West concrete abutment, south end of east face, 3 feet above concrete sidewalk. Also 24 feet north of south line of C.P.R. right of way.
- 237-G In Dovercourt road subway under Canadian Pacific railway in the city of Toronto. West concrete abutment, south end of east face, 3 feet above concrete sidewalk. Also 24 feet north of south line of C.P.R. right of way.
- 238-G In Weston road bridge over Canadian Pacific railway, West Toronto. Concrete pier at south end of steel truss and at east side of bridge; centre of north face of pier, 2 feet above concrete footing.
- 239-G In top of concrete bench-mark pier, 1¼ miles northwest of West Toronto station and between the tracks of Grand Trunk railway (Toronto-Stratford line) and Canadian Pacific railway (Toronto-Sudbury line), 37 feet southwest of the latter. Between sixth and seventh telegraph poles northwest of C.P.R. mile post 1 and 840 feet southeast of an overhead crossing of the Weston road.

- 240-G In West Toronto post office, corner of Dundas and Keele streets. Ke street wall, 30 inches north of entrance to Customs department and in third course of stonework below brickwork.
- 241-G In Runnymede road subway under Canadian Pacific railway, 1 mile west of Keele street, West Toronto. West concrete abutment, south end of east face, 3 feet above concrete sidewalk. Also 10 feet north of south line of C.P.R. right of way.
- 242-G In Canadian Pacific railway bridge over Humber river, $\frac{1}{4}$ mile west of Lambton flag station. Northeast concrete retaining wall, 2 feet 8 inches below top and 5 feet 6 inches from east end of wall.
- 243-G In Canadian Pacific railway bridge over Mimico creek and Toronto Suburban (electric) railway, 850 feet east of Islington station. Concrete retaining wall behind west abutment, south end of east face, 2 feet above bridge seat.
- 244-G In square concrete culvert under Canadian Pacific railway, $\frac{1}{4}$ mile west of Islington and 300 feet east of junction switch at "Obico". West end of south face of culvert, 6 inches below top.
- 245-G In top of concrete bench-mark pier, $1\frac{1}{4}$ miles southwest of Mimico station, 3 feet northwest of southeast line of Grand Trunk railway right of way and 205 feet southwest of signal tower at "Canpa," the junction of C.P.R. cut-off from Islington with G.T.R. Toronto-Hamilton line.
- 191 In Grand Trunk railway bridge over Etobicoke creek, 3 miles southwest of Mimico. East retaining wall, northeast face of cap-stone.

TABLE II.
RESULTS OF PRECISE LEVELLING
MONTREAL TO HULL, QUE.
Run by W. N. McGrath and F. B. Reid.

BENCH-MARK		Distance between successive bench-marks	Distance from bench-mark 818	DISCREPANCY		Elevation above mean sea level	BENCH-MARK
From	To			Partial	Total		
No.	No.	Miles	Miles	Feet	Feet	Feet	No.
	818					203.377	818
818	826	0.9	0.9	-012	-012	182.491	826
826	827	2.1	3.0	+010	-002	95.966	827
827	828	1.6	4.6	-007	-009	67.439	828
828	829	2.9	7.5	-014	-023	107.077	829
829	830	2.0	9.5	+001	-020	142.997	830
830	831	2.5	12.0	-010	-030	86.944	831
831	832	3.1	15.1	+011	-019	149.569	832
832	833	3.4	18.5	+004	-015	151.486	833
833	834	2.7	21.2	-012	-027	199.391	834
834	835	3.1	24.3	-022	-049	219.092	835
835	835-A	3.0	28.2	+029	-020	232.358	835-A
835-A	836	0.4	28.6	-003	-023	244.081	836
835-A	837	6.6	34.8	+025	+005	242.655	837
837	838	4.9	39.7	+008	+013	224.278	838
838	839	0.5	40.2	+004	+017	207.085	839
839	840	5.9	46.1	+029	+043	251.608	840
840	841	4.3	50.4	+024	+067	251.889	841
841	842	2.1	52.5	+004	+071	222.425	842
842	843	0.3	52.8	-002	+069	199.142	843
843	844	4.1	56.9	-003	+066	188.815	844
844	845	2.4	59.3	+010	+076	188.998	845
845	846	3.6	62.9	+010	+086	162.610	846
846	847	3.5	66.4	-028	+058	169.007	847
847	848	3.2	69.6	+011	+069	159.285	848
848	849	1.1	70.7	+009	+078	169.230	849
849	850	3.8	74.5	-003	+075	155.218	850
850	850-A	1.2	75.7	+006	+081	186.272	850-A
850-A	851	1.4	77.1	-007	+074	174.447	851
851	852	3.7	80.8	-029	+045	194.202	852
852	852-A	0.7	81.5	+005	+050	186.700	852-A
852-A	853	1.2	82.7	+013	+063	181.362	853
853	854	3.0	86.6	+021	+084	184.401	854
854	855	4.8	91.4	+029	+111	175.772	855
855	856	3.6	95.0	-012	+101	178.075	856
856	857	2.0	97.0	-002	+099	183.565	857
857	858	3.7	100.7	+006	+105	180.897	858
858	859	2.1	102.8	+020	+125	160.162	859
859	860	3.1	105.9	+006	+131	149.968	860
860	861	0.5	106.4	-004	+127	186.047	861
861	862	3.2	109.6	+026	+153	176.855	862
862	862-A	0.5	110.1	+004	+157	174.844	862-A
862-A	863	2.8	112.9	-010	+147	153.910	863
863	864	1.4	114.3	-003	+144	157.706	864
863	462	1.3	114.2	-017	+130	163.315	462*

* The observed elevation of the junction bench-mark 462 was 163.565

RESULTS OF PRECISE LEVELLING
ST. MARTIN JUNCTION TO THREE RIVERS, QUE.

Run by W. N. McGrath.

BENCH-MARK		Distance between successive bench-marks	Distance from bench-mark 820	DISCREPANCY		Elevation above mean sea level	BENCH-MARK
From	To			Partial	Total		
No.	No. 820	Miles	Miles	Feet	Feet	Feet 107.077	No. 820
820	684-B	0.4	0.4	+ .003	+ .003	99.007	684-B
684-B	685-B	1.9	2.3	- .030	- .027	70.232	685-B
685-B	686-B	1.7	4.0	- .005	- .032	79.599	686-B
686-B	687-B	5.8	9.8	- .061	- .093	50.781	687-B
687-B	688-B	0.2	10.0	+ .001	- .092	57.185	688-B
687-B	689-B	4.9	14.7	- .004	- .097	69.106	689-B
689-B	690-B	2.5	17.2	+ .021	- .076	52.326	690-B
690-B	691-B	2.0	19.2	+ .004	- .072	55.019	691-B
691-B	692-B	3.8	23.0	- .002	- .074	60.547	692-B
692-B	693-B	2.3	25.3	- .018	- .092	79.448	693-B
693-B	694-B	2.3	27.6	- .008	- .100	64.479	694-B
694-B	695-B	1.2	28.8	+ .021	- .079	58.508	695-B
695-B	696-B	6.7	35.5	- .010	- .089	69.194	696-B
696-B	697-B	3.6	39.1	+ .005	- .084	68.916	697-B
697-B	698-B	7.0	46.1	+ .008	- .076	53.510	698-B
698-B	699-B	3.1	49.2	- .020	- .096	33.105	699-B
699-B	700-B	1.3	50.5	- .011	- .107	34.400	700-B
700-B	701-B	2.9	53.4	+ .006	- .101	35.437	701-B
701-B	702-B	3.1	56.5	- .003	- .104	29.504	702-B
702-B	703-B	4.3	60.8	- .021	- .125	44.865	703-B
703-B	704-B	0.3	61.1	.000	- .125	52.225	704-B
703-B	705-B	4.6	65.4	+ .034	- .091	44.209	705-B
705-B	706-B	0.8	66.2	- .015	- .106	41.067	706-B
706-B	707-B	3.3	69.5	+ .001	- .105	33.595	707-B
707-B	708-B	2.2	71.7	+ .018	- .067	39.454	708-B
708-B	709-B	1.9	73.6	+ .004	- .071	39.623	709-B
709-B	710-B	2.6	76.2	+ .008	- .063	34.997	710-B
710-B	711-B	2.6	78.8	+ .027	- .036	61.888	711-B
711-B	712-B	4.4	83.2	+ .009	- .027	35.748	712-B
712-B	713-B	3.6	86.8	+ .035	+ .008	53.290	713-B
713-B	714-B	0.4	87.2	+ .009	+ .017	54.424	714-B
714-B	715-B	0.3	87.5	- .003	+ .014	53.963	715-B
714-B	716-B	0.2	87.4	+ .003	+ .020	57.903	716-B

Geodetic Survey of Canada

RESULTS OF PRECISE LEVELLING
GRENVILLE, QUE., TO PRESCOTT, ONT.

Run by F. B. Reid.

BENCH-MARK		Distance between successive bench-marks	Distance from bench-mark 842	DISCREPANCY		Elevation above mean sea level	BENCH-MARK
From	To			Partial	Total		
No.	No.	Miles	Miles	Feet	Feet	Feet	No.
	842					222.425	842
842	865	2.2	2.2	-011	-011	166.467	865
865	896	1.3	3.5	+004	-007	170.793	866
866	867	0.6	4.1	-002	-009	140.755	867
867	868	0.4	4.5	+005	-004	149.239	868
868	869	0.2	4.7	-000	-004	147.323	869
869	870	4.0	8.7	+009	+005	236.254	870
870	871	2.2	10.9	+002	+007	255.516	871
871	872	3.9	14.8	-000	+007	310.869	872
872	873	3.6	18.4	-011	-004	210.867	873
873	874	1.0	19.4	-014	-018	230.248	874
874	875	3.6	23.0	+029	+011	236.128	875
875	876	3.0	26.0	-003	+008	251.492	876
876	877	0.8	26.8	-000	+008	297.465	877
876	878	1.8	27.8	+004	+012	239.943	878
878	879	2.4	30.2	+028	+040	244.111	879
879	880	3.2	33.4	-033	+007	204.722	880
880	881	1.5	34.9	-005	+002	193.423	881
881	92	0.7	35.6	+003	+005	186.360	92*
92	882	2.3	37.9	+014	+019	180.578	882
92	93	1.4	37.0	-007	-002	193.322	93
93	883	0.7	37.7	-004	-006	194.668	883
883	884	2.0	39.7	-021	-027	227.814	884
884	885	1.0	40.7	+009	-018	197.658	885
885	886	1.7	42.4	-013	-031	195.080	886
886	887	3.4	45.8	-010	-041	187.404	887
887	888	2.6	48.4	-008	-049	185.620	888
888	889	2.3	50.7	-011	-060	180.978	889
889	890	3.1	53.8	+002	-058	178.820	890
890	891	3.1	56.9	+014	-044	172.538	891
891	892	3.7	60.6	-015	-059	180.738	892
892	893	3.3	63.9	-027	-086	187.733	893

*See next page.

Precise Levelling

21

RESULTS OF PRECISE LEVELLING GRENVILLE, QUE., TO PRESCOTT, ONT.

Run by F. B. Reid.

BENCH-MARK		Distance between successive bench-marks	Distance from bench-mark 842	DISCREPANCY		Elevation above mean sea level	BENCH-MARK
From	To			Partial	Total		
No. 893	No. 894	Miles 0.7	Miles 64.6	Feet -.006	Feet -.092	Feet 193.584	No. 894
894	490	1.1	65.7	-.014	-.106	194.246	490*
894	895	5.2	69.8	+.026	-.066	227.868	895
895	896	1.8	71.6	-.007	-.073	220.374	896
896	897	2.7	74.3	.000	-.073	227.889	897
897	898	2.1	76.4	-.003	-.081	239.870	898
898	899	2.3	78.7	+.004	-.077	238.823	899
899	900	2.9	81.6	-.024	-.101	240.621	900
900	901	3.6	85.2	-.026	-.127	243.133	901
901	902	1.7	86.9	+.007	-.120	234.226	902
902	903	2.6	89.5	+.019	-.101	244.026	903
903	904	1.1	90.6	+.016	-.085	273.572	904
904	905	0.4	91.0	-.007	-.092	264.714	905
904	906	3.1	93.7	+.016	-.069	249.288	906
906	907	2.5	96.2	-.019	-.088	254.819	907
907	908	1.0	97.2	+.008	-.080	247.965	908
908	909	3.2	100.4	-.002	-.082	281.055	909
909	910	2.1	102.5	+.019	-.063	274.717	910
910	911	3.5	106.0	+.001	-.062	279.490	911
911	912	2.6	108.6	-.016	-.078	285.627	912
912	118	1.7	110.3	-.013	-.091	288.676	118*
118	913	1.3	111.6	-.001	-.092	268.347	913
913	914	0.2	111.8	-.003	-.095	300.829	914
914	119	0.6	112.4	+.001	-.094	313.837	119*

*The observed elevations of the junction bench-marks 92, 490, 118, and 119 were, respectively, 186.273, 194.360, 288.893, and 314.060. See Note after description of bench-mark 93 (Table I).
 Connections with Public Works Dept's bench-marks:—
 CCCCLI—Hawkesbury Roman Catholic church, Elev. 147.513.
 DLXII—G.T.R. station, Cornwall, Elev. 194.094.
 DLXXX—G.T.R. culvert, Cornwall Jct., Elev. 198.026.

Geodetic Survey of Canada

RESULTS OF PRECISE LEVELLING

IVANHOE TO TORONTO, ONT.

Run by W. N. McGrath and F. B. Reid

BENCH-MARK		Distance between successive bench-marks	Distance from bench-mark 113	DISCREPANCY		Elevation above mean sea level	BENCH-MARK
From	To			Partial	Total		
No.	No.	Miles	Miles	Feet	Feet	Feet	No.
179-G	179-G		107.1		+ .067	586.659	179-G
187-G	187-G	3.0	110.1	- .018	+ .049	616.682	187-G
188-G	188-G	2.8	112.9	- .022	+ .027	556.354	188-G
189-G	189-G	3.4	116.3	- .018	+ .009	579.882	189-G
190-G	190-G	4.8	121.1	+ .008	+ .017	629.798	190-G
190-G	191-G	2.3	123.4	+ .009	+ .026	639.274	191-G
191-G	192-G	2.1	125.5	- .008	+ .018	640.805	192-G
192-G	193-G	2.9	128.4	- .006	+ .012	644.532	193-G
193-G	194-G	2.8	131.2	+ .001	+ .013	701.996	194-G
194-G	193-G-2	0.0	131.8	- .000	+ .013	698.643	193-G-2
194-G	195-G	3.8	135.0	+ .001	+ .014	684.705	195-G
195-G	196-G	1.3	136.3	- .003	+ .011	677.081	196-G
196-G	197-G	2.1	138.4	- .011	- .000	732.014	197-G
197-G	198-G	5.4	143.8	+ .002	+ .002	704.790	198-G
198-G	199-G	2.7	146.5	+ .019	+ .021	692.663	199-G
199-G	200-G	2.0	148.5	+ .002	+ .023	694.012	200-G
200-G	201-G	2.7	151.2	+ .020	+ .043	672.145	201-G
201-G	202-G	2.7	153.9	+ .026	+ .069	637.436	202-G
202-G	203-G	1.5	155.4	+ .012	+ .081	673.365	203-G
203-G	204-G	1.3	156.7	- .014	+ .067	634.497	204-G
204-G	205-G	0.8	157.5	+ .003	+ .070	644.963	205-G
205-G	206-G	3.1	160.6	- .018	+ .052	629.593	206-G
206-G	207-G	3.3	163.9	- .001	+ .051	636.484	207-G
207-G	208-G	3.0	166.9	+ .017	+ .068	697.105	208-G
208-G	209-G	3.3	170.2	+ .029	+ .097	840.213	209-G
209-G	210-G	1.5	171.7	+ .001	+ .098	893.540	210-G
210-G	211-G	2.0	173.7	+ .009	+ .107	967.287	211-G
211-G	212-G	2.5	176.2	+ .007	+ .114	1044.932	212-G
212-G	213-G	1.6	177.8	+ .016	+ .130	1072.488	213-G
213-G	214-G	2.1	179.9	- .021	+ .109	1060.374	214-G
214-G	215-G	2.4	182.3	+ .011	+ .120	1099.638	215-G
215-G	216-G	4.4	186.7	+ .025	+ .145	1056.731	216-G
216-G	217-G	4.6	191.3	+ .023	+ .168	1028.773	217-G
217-G	218-G	2.1	193.4	+ .014	+ .182	961.733	218-G
218-G	219-G	2.9	196.3	- .005	+ .177	870.963	219-G
219-G	220-G	2.9	199.2	- .009	+ .168	852.810	220-G
220-G	221-G	2.6	201.8	- .017	+ .151	820.468	221-G
221-G	222-G	1.7	203.5	- .015	+ .136	818.233	222-G
222-G	223-G	3.1	206.6	+ .012	+ .148	810.017	223-G
223-G	224-G	2.1	208.7	+ .024	+ .172	729.197	224-G
224-G	225-G	2.4	211.1	+ .023	+ .195	633.175	225-G
225-G	226-G	1.3	212.4	+ .006	+ .201	664.809	226-G
226-G	227-G	2.4	214.8	+ .005	+ .206	565.714	227-G
227-G	228-G	1.7	216.5	- .007	+ .199	532.707	228-G

Precise Levelling

RESULTS OF PRECISE LEVELLING IVANHOE TO TORONTO, ONT.

Run by W. N. McGrath and F. B. Reid.

BENCH-MARK		Distance between successive bench-marks	Distance from bench-mark 113	DISCREPANCY		Elevation above mean sea level	BENCH-MARK
From	To			Partial	Total		
No.	No.	Miles	Miles	Feet	Feet	Feet	No.
228-G	229-G	3.0	219.5	+ .002	+ .201	559.687	229-G
229-G	230-G	1.6	221.1	+ .003	+ .204	566.110	230-G
230-G	231-G	2.0	223.1	.000	+ .204	557.692	231-G
231-G	232-G	2.0	225.1	+ .006	+ .210	461.016	232-G
232-G	233-G	1.8	226.9	+ .006	+ .216	410.169	233-G
233-G	234-G	2.0	228.9	+ .005	+ .221	425.869	234-G
234-G	235-G	1.3	230.2	+ .014	+ .235	399.410	235-G
235-G	189	230.2	- .004	+ .231	405.106	189*

* The observed elevation of the junction bench-mark 189 was 404.754.
 Connections with Public Works Dept's bench-marks:—
 MCCXXII—Trent Canal lift-lock, Peterboro, Elev. 636.503.
 MCCXXI—C. P. R. bridge over Otonabee river, Peterboro, Elev. 651.356.
 DCXXII—Old C. P. R. station, North Toronto, Elev. 406.401.

RESULTS OF PRECISE LEVELLING BETHANY TO PORT HOPE, ONT.

Run by F. B. Reid

BENCH-MARK		Distance between successive bench-marks	Distance from bench-mark 209-G	DISCREPANCY		Elevation above mean sea level	BENCH-MARK
From	To			Partial	Total		
No.	No.	Miles	Miles	Feet	Feet	Feet	No.
	209-G					840.213	209-G
209-G	915	3.2	3.2	+ .007	+ .007	819.551	915
915	916	1.5	4.7	+ .013	+ .020	701.538	916
916	917	5.8	10.5	- .031	- .011	806.809	917
917	918	3.2	13.7	- .029	- .040	630.602	918
918	919	4.0	17.7	- .017	- .057	480.661	919
919	920	4.3	22.0	+ .034	- .023	310.087	920
920	172-A	1.0	23.0	+ .008	- .015	267.835	172-A*
172-A	172	0.1	23.1	+ .004	- .011	257.027	172
172-A	921	0.3	23.3	- .007	- .022	271.471	921
921	173	0.3	23.6	+ .003	- .019	287.835	173*

* The observed elevations of the junction bench-marks 172-A and 173 were respectively 267.297 and 287.311.

Geodetic Survey of Canada

RESULTS OF PRECISE LEVELLING

MYRTLE TO WHITBY, ONT.

Run by F. B. Reid

BENCH-MARK		Distance between successive bench-marks	Distance from bench-mark 219-G	DISCREPANCY		Elevation above mean sea level	BENCH-MARK
From	To			Partial	Total		
No.	No.	Miles	Miles	Feet	Feet	Feet	No.
	219-G					870.963	219-G
219-G	922	3.4	3.4	-.004	-.004	611.501	922
922	923	1.2	4.6	+.004	-.000	539.338	923
923	924	2.5	7.1	-.004	-.004	471.496	924
924	925	3.0	10.1	+.002	-.002	359.489	925
925	926	1.3	11.4	-.005	-.007	314.060	926
926	180-A	1.9	13.3	-.008	-.015	288.846	180-A*
180-A	927	1.4	14.7	-.006	-.021	250.356	927

* The observed elevation of the junction bench-mark 180-A was 288.379.

RESULTS OF PRECISE LEVELLING

NORTH TORONTO TO MIMICO, ONT.

Run by F. B. Reid

BENCH-MARK		Distance between successive bench-marks	Distance from bench-mark 235-G	DISCREPANCY		Elevation above mean sea level	BENCH-MARK
From	To			Partial	Total		
No.	No.	Miles	Miles	Feet	Feet	Feet	No.
	235-G					399.410	235-G
235-G	236-G	0.9	0.9	-.008	-.008	403.280	236-G
236-G	237-G	1.3	2.2	-.006	-.014	398.935	237-G
237-G	238-G	1.4	3.6	+.004	-.010	395.794	238-G
238-G	239-G	1.2	4.8				239-G†
238-G	240-G	0.4	4.0	+.005	-.005	389.790	240-G
238-G	241-G	1.1	4.7	+.002	-.008	390.399	341-G
241-G	242-G	1.5	6.2	+.004	-.004	396.424	242-G
242-G	243-G	1.2	7.4	+.010	+.006	399.294	243-G
243-G	244-G	1.0	8.4	+.015	+.021	397.692	244-G
244-G	245-G	2.7	11.1	+.023	+.044	316.081	245-G
245-G	191	1.3	12.4	+.017	+.061	288.356	191*

† The elevation of bench-mark 239-G has not yet been determined.

* The observed elevation of the junction bench-mark 191 was 288.353.

TABLE III.
RAIL ELEVATIONS, MONTREAL TO HULL, QUE.
(Elevations taken in 1917 and 1918)

	FEET.
Canadian Pacific Railway—Montreal, Place Viger Station	58.1
" Hochelaga	77.2
" Angus	160.3
" Mile End	222.7
" Breslay (signal tower).....	193.9
" Jacques Cartier Junction	98.2
" Bordeaux.....	75.4
" Rivière-des-Prairies; water, June 12, 1917, 56.8; rail.....	73.8
" Laval Rapides.....	74.3
" St. Martin.....	107.2
" St. Martin Junction	109.2
" Ste. Rose.....	90.0
" Rivière-des-Milles Îles; water, June 13, 1917, 69.0; rail	39.5
" Rosemere.....	91.3
" Ste. Thérèse.....	121.3
" St. Augustin.....	223.4
" Ste. Scholastique.....	237.2
" St. Hermas	255.3
" Lachute.....	228.0
" North river; water, September 20, 1917, 194.0; rail.....	209.1
" Canadian Northern railway (diamond crossing).....	250.0
" Staynerville.....	260.2
" Chatboro.....	311.8
" Magnésie.....	256.4
" Grenville.....	209.1
" Calumet.....	195.0
" Rouge river; water, October 9, 1917, 132.9; rail.....	178.1
" Pointe-au-Chêne	187.1
" Fassett.....	169.9
" Kinonze river; water, October 26, 1917, 128.9; rail.....	161.4
" Montebello	170.7
" Papineauville.....	155.0
" Plaisance.....	187.2
" Petite Nation river; water, May 9, 1918, 134.7; rail.....	185.7
" Thurso.....	185.9
" Blanche river; water, May 14, 1918, 135.5; rail.....	70.7
" Lochaber.....	180.5
" Buckingham Junction.....	190.0
" Lièvre river; rail at centre of bridge.....	188.3
" Angers.....	187.5
" Little Blanche river; water, May 20, 1918, 143.4; rail.....	168.9
" Blanche river; water, May 22, 1918, 137.8; rail.....	154.8
" East Templeton	159.3
" Gatineau	178.2
" Gatineau river; water, May 25, 1918, 138.7; rail	182.1
" Canadian Pacific railway, Ottawa-Maniwaki line (under crossing)	
rail 151.7; North Shore line rail.....	177.1
" Hull.....	190.9

RAIL ELEVATIONS, ST. MARTIN JUNCTION TO THREE RIVERS, QUE.
(Elevations taken in 1917)

Canadian Pacific Railway—St. Martin Junction	109.2
" Le Cap.....	100.5
" St. Vincent-de-Paul	72.1
" De Sales.....	54.3
" Rivière-des-Milles Îles; water, June 23, 1917, 26.7; rail	54.4
" Terrebonne.....	59.6
" Mascouche	62.8
" Mascouche river; water, July 9, 1917, 26.4; rail.....	62.2
" Cabane Ronde.....	59.2
" L'Épiphanie	72.7
" Canadian Northern railway (diamond crossing).....	72.4
" Achigan river; water, July 7, 1917, 24.0; rail	72.4
" St. Esprit river; water, July 7, 1917, 28.8; rail.....	68.3
" L'Assomption river; water, July 11, 1917, 24.2; rail.....	63.3
" Vaucluse	78.0

RAIL ELEVATIONS, ST. MARTIN JUNCTION TO THREE RIVERS, QUE.—Continued.

(Elevations taken in 1917)

Canadian Pacific Railway—Lavaltrie	85.3
" Lanoraie	68.4
" Paquette	84.4
" Chaloupe river; water July 19, 1917, 21.8; rail	56.6
" Berthier Junction	36.7
" Bayonne river; water, July 21, 1917, 16.4; rail	37.0
" Chicot river; water, July 23, 1917, 16.0; rail	37.9
" St. Cuthbert	37.8
" St. Barthélemi	33.0
" Maskinongé river; water, August 8, 1917, 17.6; rail	48.8
" Maskinongé	48.9
" Louiseville	42.4
" Rivière-du-Loup; water, August 10, 1917, 15.9; rail	44.2
" Yamachiche	33.8
" Yamachiche river; water, August 11, 1917, 23.6; rail	43.5
" Pointe-du-Lac	67.7

RAIL ELEVATION, GRENVILLE, QUE. TO PRESCOTT, ONT.

(Elevations taken in 1918)

Canadian Pacific Railway—Grenville	209.1
Canadian Northern Ry.—Grenville	174.5
" Grenville canal; water 128.6; rail	174.8
" Ottawa river; water, May 29, 1918, 117; rail (centre of bridge)	174.5
" Hawkesbury	162.4
Grand Trunk Railway—Hawkesbury	142.9
" Canadian Northern railway (diamond crossing)	159.9
" Canadian Pacific railway, Ottawa-Vaudreuil line (diamond crossing)	263.8
" Vankleek Hill	296.0
" Rigaud river; water, June 10, 1918, 194.2; rail	214.8
" Dalkeith	229.1
" Glen Sandfield	237.8
" Glen Robertson	263.1
" Interprovincial boundary, Ontario-Quebec	244.6
" Ste. Justine	247.3
" Canadian Pacific railway, diamond crossing at St. Polycarpe Junction	194.1
" St. Polycarpe	177.6
Canadian Pacific Railway—Delisle river; water, June 17, 1918, 157.7; rail	193.8
" Soulanges, junction switch	200.5
" Laberge	210.2
" Baudet river; water, June 17, 1918, 183.2; rail	197.7
" Bridge End	198.5
" North Lancaster	186.5
" Glen Gordon	182.3
" Williamstown	182.1
" Raisin river; water, June 27, 1918, 157.6; rail	181.6
" Glenbrook	176.6
" Grand Trunk railway, main line (diamond crossing)	191.0
" Cornwall	182.7
Grand Trunk Railway—Cornwall	192.9
" Ottawa & New York railway, diamond crossing at Cornwall Junction	201.7
" Mille Roches	226.0
" Moulinette	233.6
" Wales	237.3
" Farran Point	242.6
" Aultsville	247.6
" Morrisburg	271.1
" Iroquois	245.1
" Cardinal	278.8
" Canadian Pacific railway, Ottawa-Prescott line (under crossing) rail	304.6
" 264.6; G T R. rail	310.9
" Prescott	310.9
Canadian Pacific Railway—Prescott	260.3

Precise Levelling

RAIL ELEVATIONS, IVANHOE TO TORONTO, ONT.

(Elevations taken in 1916 and 1918)

Canadian Pacific Railway—Ivanhoe	610.3
" Peterson	561.2
" Canadian Northern railway, Trenton Maynooth line, diamond crossing at Bonarlaw	598.3
" Crow river; water, October 16, 1916, 582.9; rail	600.4
" Tiffin	344.3
" Havelock	701.0
" Norwood	671.9
" Asphodel (flag station)	728.5
" Indian River	710.3
" Otonabee	677.1
" Trent canal; water 632.0; rail	640.6
" Otonabee river; water, Aug. 22, 1918, 620.5; rail	632.5
" Peterboro	631.4
" Grand Trunk railway, Port Hope-Peterboro line (diamond crossing)	636.8
" Kendry (flag station)	653.9
" Cavan	645.6
" Grand Trunk railway, Millbrook-Omemee Junction line (under crossing) rail 839.1; C.P.R. rail	864.7
" Bethany Junction	855.5
" Manvers	969.1
" Pontypool	1,067.1
" Burketon	1,057.0
" Brady	1,064.1
" Myrtle	888.8
" Grand Trunk railway, Whitby-Lindsay line (overhead crossing) rail 893.0; C.P.R. rail	870.4
" Dagmar	861.0
" Glen Major	843.5
" Claremont	837.0
" Atha Road	747.5
" Locust Hill	666.2
" Little Rouge creek; water, Sept. 17, 1918, 597.7; rail	636.7
" Rouge creek; water, Sept. 17, 1918, 483.1; rail	526.3
" Browns Corner	563.4
" Agincourt	565.5
" Grand Trunk railway, Lindsay-Searboro Junction line (under crossing) rail 543.7; C.P.R. rail	570.2
" Wexford	537.6
" Canadian Northern railway (under crossing) rail 373.8; C.P.R. rail (eastbound track)	458.0
" Donlands	448.8
" Leaside	430.2
" North Toronto (centre of Yonge street subway)	417.2

RAIL ELEVATIONS, PETERBORO TO PORT HOPE, ONT.

(Elevations taken in 1918)

Grand Trunk Railway—Peterboro	647.6
" Canadian Pacific railway, main line (diamond crossing)	636.8
" Millbrook, Peterboro track	768.6
" Millbrook, Omemee Junction track	770.0
" Carmel	908.3
" Campbelloft	627.3
" Perrytown	642.1
" Quay	475.5
" Smith creek; water, August 2, 1918, 310.9; rail	328.5
" Canadian Northern railway, Toronto-Ottawa line (overhead crossing) rail 348.8; G.T.R. rail	304.8
" Smith creek; water, August 2, 1918, 292.2; rail	298.1
" Smith creek; water, August 2, 1918, 272.9; rail	280.8
" Port Hope (centre of Walton street)	278.3
" Canadian Pacific railway, Lake Ontario Shore line (overhead crossing) rail 294.6; G.T.R. rail	270.0
" Port Hope Junction	286.8

Geodetic Survey of Canada

RAIL ELEVATIONS, MYRTLE TO WHITBY, ONT.

(Elevations taken in 1918)

Grand Trunk Railway—Myrtle	822.0
" Brooklin	537.3
" Canadian Northern railway, Toronto-Ottawa line (diamond crossing)	480.8
Canadian Northern Ry.—Brooklin	476.2
Grand Trunk Railway—Canadian Pacific railway, Lake Ontario Shore line (diamond crossing)	299.3
" Toronto and Eastern (electric) railway, diamond crossing	291.5
" Whitby (town station)	286.2
" Whitby Junction	276.3

RAIL ELEVATIONS, NORTH TORONTO TO MIMICO, ONT.

(Elevations taken in 1918)

	FEET
Canadian Pacific Railway—North Toronto (centre of Yonge street subway)	417.2
" Grand Trunk railway, Toronto-North Bny line (diamond crossing)	397.6
" Grand Trunk railway, Toronto-Stratford line (diamond crossing)	396.0
" Canadian Pacific railway, Toronto-Sudbury line (diamond crossing)	396.0
" West Toronto	390.4
" Lambton	398.8
" Humber river; rail on bridge	399.6
" Toronto Suburban (electric) railway, under crossing, rail 381.4;	
C.P.R. rail	402.6
" Islington	402.7
" Obico, junction switch	399.6
" Canpa, junction switch	317.9

INDEX

ALPHABETICAL LIST OF CITIES, TOWNS AND VILLAGES AT OR NEAR WHICH BENCH-MARKS HAVE BEEN ESTABLISHED

Note.—Under "Year of Publication."

1912 refers to Vol. I, No. 2, "Publications of the Dominion Observatory."
 1913 " Vol. I, No. 3, "
 1914 " Vol. I, No. 8, "
 1915 " Vol. II, No. 1, "
 1916 " Vol. III, No. 6, "
 1917 " Vol. III, No. 8, "
 1918 " Publication No. 1, Geodetic Survey of Canada.
 1919 " the present publication.

Place	B.M. Number	Year of Publication	Description	Elevation	
				Page.	Page.
Abbotsford, B.C.	28-J	1918		23	43
Abbotsford, Que.	620-B	1918		11	33
Abercorn, Que.	54	1917		282	318
Actonvale, Que.	630-B	1918		9	32
Adamsville, Que.	59	1917		281	317
Agincourt, Ont.	229-G, 230-G	1919		15	23
Ailes Craig, Ont.	343	1914		220	276
Alameda, Sask.	57-C	1913		69	83
Albert Canyon, B.C.	303-C	1917		270	310
Alcove, Que.	472	1914		218	234
Aldergrove, B.C.	24-J	1916		170	191
Algoma, Ont.	602	1916		156	181
Alix, Alta.	61-F, 62-F	1916		165	187
Allenford, Ont.	292	1913		60	83
Alliston, Ont.	382, 383	1913		64	86
Almonte, Ont.	64-G, 65-G, 66-G	1917		250	293
Alton, Ont.	131-F	1918		17	37
Amherst, N.S.	545-B to 548-B	1916		146	173
Andover, N.B.	40-B	1917		277	314
Angers, Que.	858	1919		8	18
Antigonish, N.S.	172-B, 173-B	1913		47	74
Apohaqui, N.B.	115-B	1913		44	73
Appin, Ont.	240	1913		56	81
Apple Hill, Ont.	100	1917		285	320
Ardendale, Ont.	165-G	1917		256	295
Ardrossan, Alta.	55-H	1916		163	186
Argyle, N.S.	457-B	1915		13	30
Arnprior, Ont.	73-G, 74-G, 75-G	1917		250	293
Aroostook, N.B.	41-B	1917		277	314
Artland, Sask.	28-H	1915		20	34
Ashcroft, B.C.	74-J	1918		26	42
Asquith, Sask.	5-H	1915		19	34
Athalmer, B.C.	153-D	1917		265	305
Atwood, Ont.	309	1913		61	83
Auburn, N.S.	487-B	1916		148	175
Aultsville, Ont.	900	1919		12	21
Avondale, N.S.	167-B	1913		47	74
Avonmore, Ont.	103	1917		285	320
Ayers Cliff, Que.	28-A-2, 29	1913		48	75
Aylesbury, Sask.	14-D	1913		72	90
Azilda, Ont.	457	1914		225	238
Baden, Ont.	101-F	1918		15	36
Baker Brook, N.B.	264-B	1917		247	290
Bala, Ont.	408	1913		66	86
Banff, Alta.	240-C, 241-C	1916		167	188
Barons, Alta.	76-D, 77-D	1915		25	38
Barrington, N.S.	444-B	1915		12	29
Barrington Passage, N.S.	446-B	1915		12	29
Burrys Bay, Ont.	523	1915		16	32
Bushaw, Alta.	65-F	1916		165	187

* The bench-mark numbers in this publication (Yukon levelling) follow a series independent of those in the later publications; in order to distinguish them they are printed in italics in the "B.M. Number" column.

ALPHABETICAL LIST OF CITIES, TOWNS AND VILLAGES AT OR NEAR WHICH BENCH-MARKS HAVE BEEN ESTABLISHED—Continued.

Place	B. M. Number	Year of Publication	Description	Elevation
Bath, N.B.	35-B	1917	Page 276	Page 314
Bayfield, N.S.	177-B	1913	48	75
Beamsville, Ont.	204	1913	63	85
Beaudette, Minn.	16-E	1914	226	239
Beavermouth, B.C.	284-C	1917	269	309
Bedford, Que.	60	1917	282	318
Bedford, N.S.	506-B	1916	144	171
Beecher Falls, Vt.	562-B	1916	153	180
Beeton, Ont.	379	1913	64	86
Beiseker, Alta.	48-F	1916	164	187
Belgrave, Ont.	316	1913	61	83
Bellamy, Ont.	101-G	1917	252	298
Belle River, Ont.	252	1913	57	81
Belleville, N.S.	459-B	1915	13	30
Belleville, Ont.	156 to 157-A-2	1917	288	322
Beloil, Que.	606-B	1918	9	32
Bennett, B. C.	32-R	1912	23	23
Benton, N.B.	18-B	1917	276	313
Berthier Jct., Que.	698-B	1919	9	19
Berwick, N.S.	488-B	1916	148	175
Bethany Jct., Ont.	206-G, 210-G	1919	14	22
Bethune, Sask.	9-D	1913	71	90
Bienfuit, Sask.	61-C	1913	69	88
Biggan, Sask.	12-II	1915	20	34
Blackie, Alta.	63-D	1915	26	35
Bladworth, Sask.	19-D	1914	227	240
Blaine, Wash.	19-J	1916	169	190
Blairmore, Alta.	103-D	1917	262	304
Blind River, Ont.	604, 605	1916	156	181
Bloomfield, N.B.	111-B	1913	44	73
Blue River, B.C.	124-J, 125-J	1918	28	43
Bluevale, Ont.	313	1913	61	83
Blyth, Ont.	317	1913	61	83
Boharm, Sask.	106-C	1914	229	241
Boiestown, N.B.	33-C	1916	151	174
Boissevain, Man.	31-C, 32-C	1913	67	87
Bolton, Ont.	260	1913	58	82, 86
Bonarlaw, Ont.	189-G	1919	13	22
Bordeaux, Que.	828	1919	7	18
Bothwell, Ont.	243	1913	57	81
Boundary Creek, N.B.	128-B	1913	45	73
Bow Island, Alta.	175-C, 179-C	1915	23	35
Bowmanville, Ont.	177	1913	54	79
Braburn, Y.T.	57	1912	27	27
Brant, Alta.	65-D	1915	26	38
Brantford, Ont.	219, 229	1913	55	80
Breslau, Ont.	94-F	1918	14	36
Bridgeburg, Ont.	215-A	1913	64	85
Bridgewater, N.S.	109-B to 411-B	1915	10	28
Brierly Brook, N.S.	170-B	1913	47	74
Brighton, Ont.	163	1917	288	322
Bristol, N.B.	34-B	1917	276	314
Britannia Mills, Que.	625-B	1918	9	32
Brockville, Ont.	123, 124	1917	286	321
"	105-G, 106-G	1917	252	298
Brome, Que.	50	1917	282	318
Bromptonville, Que.	648-B	1918	10	33
Brooklin, Ont.	923, 924	1919	16	24
Brookport, Que.	60	1917	281	317
Bruce, Alta.	45-II	1916	162	186
Bruce Mines, Ont.	619	1916	156	182
Brucefield, Ont.	329	1913	62	84
Brunswick, N.B.	6-B	1917	275	313
Brussels, Ont.	312	1912	61	82
Buckingham Jct., Que.	857	1919	8	18
Bull River, B.C.	135-D	1917	264	308
Burdett, Alta.	180-C, 181-C	1915	23	35, 36
Burketon, Ont.	216-G	1919	14	22
Burlington Jct., Ont.	196	1913	55	80
Bury, Que.	13-A-2	1913	49	76

ALPHABETICAL LIST OF CITIES, TOWNS AND VILLAGES AT OR NEAR WHICH
BENCH-MARKS HAVE BEEN ESTABLISHED—Continued.

Place	B.M. Number	Year of Publication	Description	Elevation
Calabogie, Ont.	139-G	1917	Page 254	Page 290
Calais, Maine	1-B	1917	275	313
Caldwell, Ont.	512	1915	16	32
Caledon, Ont.	265	1913	58	82
	265	1913	17	37
Calgary, Alta	50-D, 51-D, 52-D	1915	27	59
	39-F	1916	163	187
	217-C, 218-C	1916	166	188
Cambridge, N.S.	490-B	1916	148	175
Campbellcroft, Ont.	918	1919	16	24
Campbellton, N.B.	25-G, 26-G	1916	151	177
Camrose, Alta	70-F, 71-F	1916	165	187
Canmore, Alta	235-C	1916	167	188
Canrobert, Que.	622-B	1918	11	33
Canterbury, N.B.	16-B	1917	276	313
Capelton, Que.	26	1913	48	75
Cap St. Ignace, Que.	567-B	1917	247	291
Cap St. Martin, Que.	684-B	1919	9	19
Cardinal, Ont.	910	1919	13	21
Cariboo, Y.T.	18-R	1912	24	24
Carievale, Sask.	79-C	1913	68	88
Carleton Place, Ont.	60-G, 61-G, 62-G	1917	249, 250	293
Carmanagay, Alta	73-D, 74-D	1915	25	38
Carnduff, Sask.	50-C	1913	68	88
Caron, Sask.	108-C	1914	229	241
Cartwright, Man.	20-C	1913	67	87
Cascades, Que.	467	1914	218	234
Cataract, Ont.	130-F	1918	16	37
Cavan, Ont.	208-G	1919	14	22
Chamberlain, Sask.	12-D	1913	72	90
Champion, Alta.	71-D	1915	26	38
Chaplin, Sask.	113-C	1914	229	241
Chase, B.C.	342-C	1918	31	45
Chatham, Ont.	246-A, 247, 247-A	1913	57	81
	373, 247	1914	222	236
	49-G	1916	152	178
Chatham, N.B.	283	1913	59	82
Chatsworth, Ont.	MCLXXII	1918	†	34
Chaudiere, Que.	30-H	1915	21	34
Chauvin, Alta.	404	1914	218	234
Cheleea, Que.	295, 296	1913	60	83
Chesley, Ont.	401-B	1915	10	28
Chester, N.S.	107	1917	285	320
Chesterville, Ont.	34-J, 35-J	1918	24	42
Chin, Alta.	191-C	1915	23	36
Chipman, N.B.	352-B	1914	216	233
Chu Chua, B.C.	98-J	1918	27	43
Clarkson, Ont.	192	1913	55	80
Clarksville, N.S.	520-B, 521-B	1916	145	171
Clayburn, B.C.	29-J	1918	24	42
Clifton, N.S.	531-B	1916	145	172
Clinton, Ont.	320, 321	1913	62	83
Cloverdale, B.C.	20-J, 21-J	1916	169	191
Coaticook, Que.	14, 15, 16	1917	283	319
Coblens, Sask.	17-H	1915	20	34
Cobourg, Ont.	171	1913	53	79
Cochrane, Alta.	222-C, 223-C	1916	166	188
Colborne, Ont.	166	1917	288	322
Coldbrook, N.S.	491-B	1916	148	175
Coldwater, Ont.	399-A	1913	65	86
Coleman, Alta.	105-D	1917	262	304
Collins Bay, Ont.	144	1917	287	321
Compton, Que.	10	1917	283	319
Condie, Sask.	8-D	1913	71	90
Conn Mills, N.S.	159-B	1913	46	74
Cooking Lake, Alta.	53-H	1916	163	186
Cookshire, Que.	10-A-3, 11-A	1913	49	76
Copetown, Ont.	216-A	1913	55	80
Corbetton, Ont.	273	1913	59	82
Corbyville, Ont.	185-G	1917	257	301

† Refer to Public Works Dept.

ALPHABETICAL LIST OF CITIES, TOWNS AND VILLAGES AT OR NEAR WHICH BENCH-MARKS HAVE BEEN ESTABLISHED—Continued.

Place	B.M. Number	Year of Publication	Description	Elevation
Cornwall, Ont.	489, 490, 491	1914	Page	Page
"	891, 891	1919	219	235
Corunna, Ont.	361	1914	12	20, 21
Coteau Jet., Que.	90	1917	231	236
Côte-des-Neiges, Que.	815, 816, 817	1918	294	320
Courtright, Ont.	363	1914	13	35
Coutts, Alta.	216-C†	1914	222	236
Cowley, Alta.	97-D	1915	25	37
Craighurst, Ont.	392	1917	262	304
Craik, Sask.	16-D	1913	65	86
"	16-D	1913	72	90
Cranbrook, B.C.	172-D to 174-D	1917	266	307
Creston, B.C.	195-D, 196-D	1917	268	307
Crookston, Ont.	179-G	1917	257	296
Crowanest, B.C.	109-D	1917	263	304
Crysler, Ont.	496	1914	220	235
Crystal City, Man.	16-C	1913	67	87
Dalhousie Mills, Ont.	95	1917	285	320
Dalkeith, Ont.	873, 874	1919	11	20
Danby, Que.	633-B	1918	10	33
Danville, Que.	679-B	1918	12	43
Dauntless, Alta.	171-C	1915	22	35
Davidson, Sask.	18-D	1914	227	240
Dawson, Y.T.	224, 22.	1912	34	34
Dean Lake, Ont.	669	1916	156	182
Debee, N.B.	29-B	1917	276	313
Delburne, Alta.	59-F	1916	165	187
Deloraine, Man.	36-C	1913	63	88
Delson, Que.	591-B, 594 B	1918	8	32
Denfield, Ont.	338	1913	62	84
Denmark, N.S.	149-B	1913	46	74
Depot Harbour, Ont.	566, 567	1915	13	31
Derby Jet., N.B.	47-G-2	1916	152	178
Derby Line, Vt.	33-A	1913	49	75
De Sales, Que.	687-B, 688 B	1919	9	19
Desbarats, Ont.	622	1916	157	182
Devlin, Ont.	27-E	1915	226	239
DeWinton, Alta.	57-D	1915	26	38
Dinant, Alta.	73-F	1916	165	187
Disley, Sask.	8-D	1913	71	90
Doaktown, N.B.	37-G	1916	151	178
Dobbinton, Ont.	294	1913	60	83
Dorehester, N.B.	190 C LXXXIX, etc.	1916	†	174
Dorelee, Alta.	66-F	1916	165	187
Dosquet, Que.	657-B	1918	11	34
Drayton, Ont.	123-F	1918	16	37
Dresden, Ont.	370	1914	222	236
Drinkwater, Sask.	91-C	1913	70	89
Duck, B.C.	348-C	1918	31	45
Duck Lake, Sask.	42-D	1914	228	240
Dundalk, Ont.	274	1913	59	82
Dundas, Ont.	215	1913	55	80
Dundurn, Sask.	25-D	1914	227	240
Dunmore, Alta.	165-C	1915	22	35
Eastman, Que.	44	1917	281	317
East Pubnico, N.S.	451-B	1915	13	29
Eastray, Que.	44	1917	281	317
East Templeton, Que.	860, 861	1919	8	18
Eastwood, Ont.	225	1913	55	80
Eeho Bay, Ont.	626	1916	157	182
Edgerton, Alta.	33-II	1915	21	34
Edmonton, Alta.	58-II to 61-II	1916	163	186
Edmundston, N.B.	58-B, 59-B, 60-B	1917	278	314
Edson, Alta.	81-H, 92-H	1917	272	311
Eganville, Ont.	514	1915	16	32
Elmwood, Ont.	297	1913	60	83

† Also bench-mark in international boundary monument.

‡ Refer to Public Works Dept.

ALPHABETICAL LIST OF CITIES, TOWNS AND VILLAGES AT OR NEAR WHICH BENCH-MARKS HAVE BEEN ESTABLISHED—Continued.

Place	B.M. Number	Year of Publication	Description	Elevation
			Page	Page
Elora, Ont.	117-F, 118-F	1918	16	37
Elva, Man.	44-C	1913	68	88
Embrun, Ont.	498	1914	220	235
Emerson, Man.	3-C	1913	66	87
Emo, Ont.	23-E, 24-E	1914	226	239
Enlaugra, Que.	51	1917	282	318
Ensign, Alta.	69-D	1915	26	38
Erin, Ont.	129-F	1918	16	37
Ernestown, Ont.	146	1917	287	321
Ernfold, Sask.	115-C	1914	229	241
Estevan, Sask.	62-C, 63-C	1913	69	88
Eureka, Y.T.	187	1912	33	33
Exeter, Ont.	332, 331	1913	62	94
Fairville, N.B.	96-B	1917	280	316
Farnham, Que.	62	1917	281	317
"	63, 64	1917	282	318
"	623-B, 62	1918	11	33
Farran Point, Ont.	899	1919	12	21
Fasset, Que.	847	1919	8	18
Fergus, Ont.	119-F, 130-F	1918	16	37
Ferintosh, Alta.	67-F	1916	165	187
Fernie, B.C.	121-D to 123-D	1917	263	305
Field, B.C.	260-C	1916	168	189
Finch, Ont.	105	1917	235	320
"	45	1914	219	235
Findlater, Sask.	11-D	1913	72	90
Flesherton, Ont.	277	1913	59	82
Forest, Ont.	351	1914	221	236
Fort Erie, Ont.	215-A	1913	64	85
Fort Frances, Ont.	29-E, 30-E	1914	226	239
Fort William, Ont.	90-E to 92-E	1916	161	184
Foster, Que.	47	1917	281	317
Frank, Alta.	102-D	1917	262	304
Franz, Ont.	708	1917	261	303
French Village, N.S.	395-B	1915	9	28
Frohisler, Sask.	58	1913	69	88
Fulford, Que.	56	1917	281	317
Gainsborough, Sask.	47-C	1913	68	88
Galt, Ont.	81-F to 82-F-2	1918	14	36
Girvin, Sask.	17-D	1913	72	90
Glacier, B.C.	294-C	1917	270	309
Glacier, Y.T.	266	1912	36	36
Glencoe, Ont.	241, 241-A	1913	50	81
Glen Ewen, Sask.	52-C	1913	68	88
Glen Robertson, Ont.	878, 877	1919	11	20
Glentay, Ont.	117-G	1917	253	295
Goderich, Ont.	325, 326, 327	1913	62	83, 84
Godfrey, Ont.	150-G	1917	255	300
Golden, B.C.	273-C	1917	269	309
Golden Lake, Ont.	515	1915	16	32
Goodlands, Man.	38-C	1913	68	88
Gracefield, Que.	434	1914	219	234
Graceton, Minn.	14-E	1914	226	239
Grafton, Ont.	168	1913	53	79
Grainger, Alta.	50-F	1916	164	187
Grand Coulee, Sask.	101-C	1913	71	89
Grand Falls, N.B.	46-B	1917	277	314
Grand Ligne, Que.	78	1917	280	317
Grand Pré, N.S.	498-B	1916	149	175
Grandora, Sask.	3-H	1915	19	34
Grassy Lake, Alta.	182-C, 183-C	1915	23	36
Green River, N.B.	54-B	1917	277	314
Green Valley, Ont.	37	1917	255	299
Grenville, Que.	842, 845	1919	7	18
"	865, 866	1919	10	20
Gretna, Man.	4-C	1913	66	87

‡ Refer to Public Works Dept.

ALPHABETICAL LIST OF CITIES, TOWNS AND VILLAGES AT OR NEAR WHICH
BENCH-MARKS HAVE BEEN ESTABLISHED—Continued.

Place	B.M. Number	Year of Publication	Description	Elevation
Grimshy, Ont.	203	1913	Page 63	Page 85
Guelph, Ont.	90-F to 92-F	1918	14	36
Guelph Jct., Ont.	88-F, 89-F	1918	14	36
Gull Lake, Sask.	136-C	1914	230	241
Hague, Sask.	38-D	1914	228	240
Hulbrite, Sask.	73-C	1913	69	89
Halifax, N.S.	386-B, 387-B	1915	9	28
	386-B, 387-B	1916	144	171
	2-C	1913	66	87
Hallock, Minn.		1913	63	85
Hamilton, Ont.	198, 199, 200	1913	44	73
Hampton, N.B.	109-B	1913	227	240
Hanley, Sask.	23-D	1914	60	83
Hanover, Ont.	298, 299	1913	149	176
Hantsport, N.S.	500-B	1916	52	77
Harlaka Jct., Que.	219-B	1913	14	36
Harrisburg, Ont.	77-F	1918	303, 304	83
Harriston, Ont.		1913	154-G	300
Harrowsmith, Ont.		1917	31-B	313
Hartland, N.B.		1917	151-C	35
Hatton, Sask.		1915	193-G-2	22
Havelock, Ont.		1919	867 to 869	20
Hawkesbury, Ont.		1919	502	220
Hawthorne, Ont.		1914	34-II	235
Heath, Alta.		1915	310	21
Henfryn, Ont.		1913	118-C	61
Herbert, Sask.		1914	742, 742-A	230
Heron Bay, Ont.		1918	86-F	19
Hespeler, Ont.		1918	13	36
Hillhurst, Que.		1917	128-F	283
Hillsburgh, Ont.		1918	46-H	16
Holden, Alta.		1916	281	163
Holland Centre, Ont.		1913	322	59
Holmesville, Ont.		1913	22-C	62
Holmfield, Man.		1913	42-J, 43-J	67
Hope, B.C.		1913	87	87
Howick Jct., Que.		1918	397-B	24
Hubbards, N.S.		1917	459, 460	284
Hull, Que.		1915	132	9
Humes, Y.T.		1914	26-J, 27-J	217
Huntingdon, B.C.		1912	341	31
Hyde Park Jct., Ont.		1916		170
		1913		63
				84
Iberville, Que.	74	1917	280	317
Ilderton, Ont.	339	1913	63	84
Indian River, Ont.	198-G	1919	14	22
Indian River, Y.T.	205	1912	33	33
Ingersoll, Ont.	229, 230	1913	56	80
Inkerman, Ont.	110	1917	263	320
Irma, Alta.	39-H	1916	162	185
Iroquois, Ont.	907, 908	1919	13	21
Irvine, Alta.	159-C, 160-C	1915	22	35
Islington, Ont.	243-G, 244-G	1919	17	25
Ivanhoe, Ont.	179-G	1917	257	296
Jaekfish, Ont.	757	1918	19	39
Jaffray, B.C.	131-D, 132-D	1917	264	305
James River, N.S.	169-B	1913	47	74
Jasper, Alta.	104-H	1917	274	312
Jasper, Ont.	97-G	1917	252	298
Jeannette, Ont.	249-A	1913	57	81
Jordan, Ont.	205	1913	63	85
Juniata, Sask.	6-H	1915	19	34
Kakabeka Falls, Ont.	85-E	1916	161	194
Kamloops, B.C.	353-C to 355-C	1918	31	45
Kamloops Jct., B.C.	87-J	1918	26	43
Kasabazua, Que.	479	1914	218	234
Kearney, Ont.	552	1913	14	31
Keewatin, Ont.	34-F	1915	19	33

ALPHABETICAL LIST OF CITIES, TOWNS AND VILLAGES AT OR NEAR WHICH BENCH-MARKS HAVE BEEN ESTABLISHED—Continued.

Place	B.M. Number	Year of Publication	Description	Elevation
Kempton, Ont.	113	1917	Page 286	Page 320
Kemptville, Ont.	133 A	1913	52	78
Kenaston, Sask.	25 D	1914	227	240
Kennetcook, N.S.	523 B, 524-B	1916	145	171
Kenora, Ont.	42-F, 37-F, 38-F	1915	19	33
Kentville, N.S.	42-B to 494-B	1916	148	175
Kilburn, N.B.	7-B	1917	277	314
Killaloe, Ont.	518, 519	1915	16	32
Killarney, Man.	25-C	1913	67	87
Kingsey, Que.	677-B	1918	12	44
Kingston, N.S.	486-B	1916	148	175
Kingston, Ont.	139, 141, 141-A, 142	1917	287	321
Kipp, Alta.	81-D	1915	25	38
Kippen, Ont.	330	1913	62	81
Kirkcaldy, Alta.	70-D	1915	26	38
Kirk Ferry, Que.	465, 466	1914	218	234
Kitchener, Ont.	95-F to 97-F	1918	15	36
Kleinburg, Ont.	258	1913	58	82
Knowlton, Que.	49	1917	282	318
Komoka, Ont.	237-A	1913	56	80
Kootenay Landing, B.C.	204-D, 205-D	1917	268	308
Lac Baker, N.B.	267-B	1917	247	290
Lachute, Que.	834	1919	7	18
Lacolle, Que.	583-B	1918	8	32
Lake Louise, Alta.	248-C, 249-C	1916	167	189
Lambton, Ont.	242 G	1919	17	25
Landis, Sask.	16-H	1915	20	34
Lanoraie, Que.	697-B	1919	9	19
Lansdowne, Ont.	130, 131	1917	286	321
Laprairie, Que.	596-B	1918	8	32
Lavant, Ont.	132-G	1917	254	299
Leaside, Ont.	233-G	1919	15	23
Le Cap, Que.	684-B	1919	9	19
Leckford, Sask.	41-D	1914	228	240
Leney, Sask.	8-H	1915	19	34
Lennoxville, Que.	6	1917	283	319
L'Epiphanie, Que.	693-B	1919	9	19
Lepreau, N.B.	89-B	1917	270	316
Lethbridge, Alta.	196-C to 200-C	1915	24	36
"	83 D	1915	25	38
Lévis, Que.	221-B, 222-B	1913	52	77
"	222 B	1916	153	179
L'Islet, Que.	568-B	1917	218	291
Listowel, Ont.	307, 308	1913	61	85
Little River, Y.T.	37	1912	26	26
Liverpool, N.S.	418 B, 419-B, 420-B	1915	11	23
Locust Hill, Ont.	226-G	1919	15	23
Londesborough, Ont.	318	1913	61	83
London, Ont.	235, 236	1913	56	80
Londonderry, N.S.	CMXXXIX	1916	†	172
Longwood, Ont.	239 A	1913	56	81
Louiseville, Que.	705 B, 706-B	1919	10	19
Lousann, Alta.	58 F	1916	165	187
Low, Que.	476	1914	218	234
Lower Argyle, N.S.	455 B	1915	13	30
Lower East Pubnico, N.S.	452 B	1915	12	29
Lucan, Ont.	114 F	1918	15	36
Lucan Crossing, Ont.	337	1913	62	84
"	337	1918	15	36
Lucerne, B.C.	111-H	1918	22	41
Lumsden, Sask.	7 D	1913	71	90
Lyn, Ont.	125	1917	286	321
Lynden, Ont.	217	1913	55	80
Lyon Brook, N.S.	156 B	1913	47	74
Lyster, Que.	660 B	1918	11	34
Lytton, B.C.	62-J, 63 J	1918	25	42
Macenn, N.S.	CMXXVI	1916	†	173
Macleod, Alta.	87-D, 88-D	1917	262	304
Macoun, Sask.	69 C	1913	69	89

† Refer to Public Works Dept.

ALPHABETICAL LIST OF CITIES, TOWNS AND VILLAGES AT OR NEAR WHICH
BENCH-MARKS HAVE BEEN ESTABLISHED—Continued.

Place	B.M. Number	Year of Publication	Description	Elevation
			Page	Page
Madawaska, Ont.	530, 531	1915	15	32
Madoc Jct., Ont.	182-G	1917	257	401
Magog, Que.	40, 41, 41-A	1917	281	317
Maitland, Ont.	121	1917	286	327
Malagash, N.S.	144-B	1913	46	74
Mallorytown, O. C.	128	1917	286	321
Manitou, Man.	11-C, 12-C	1913	66	87
Maple Creek, Sask.	145-C, 146-C	1914	231	241
Markdale, Ont.	279	1913	59	82
Marysville, Ont.	152	1917	288	321
Mascouche, Que.	689-B	1919	9	19
Maskinonge, Que.	703-B, 704-B	1919	10	19
Massawippi, Que.	28-A	1913	48	75
Masson, Que.	857	1919	8	18
Massey, Ont.	590	1916	155	181
Mather, Man.	17-C	1913	67	87
Matsqui, B.C.	30-J	1918	24	42
McAdam, N.B.	11-B	1917	275	313
McBride, B.C.	131-II	1918	23	41
McGivney Jct., N.B.	333-B	1914	215	233
Meadowville, N.S.	153-L	1913	46	74
Medicine Hat, Alta.	167-C, 168-C, 169-C	1915	22	35
Medora, Man.	40-C	1913	68	88
Medway, N.S.	115-B	1915	10	28
Megantic, Que.	21-A-2, 22-A	1913	50	76
Melancthon, Ont.	271-A, 272	1913	59	82
Melita, Man.	42-C, 43-C	1913	68	88
Melville, Ont.	132-F	1918	17	37
Memramcook, N.B.	549-B	1916	146	174
Merigomish, N.S.	164-B	1913	47	74
Merriekville, Ont.	84-G	1917	251	295
Merriton, Ont.	209	1913	63	85
Michel, B.C.	114-D	1917	263	304
Michipicoten, Ont.	69	1917	261	303
Midale, Sask.	71-C	1913	69	89
Middleton, N.S.	482-B, 483-B	1916	148	175
Midhurst, Ont.	390	1913	65	86
Midnapore, Alta.	54-D	1915	27	39
Milan, Que.	18-A-2	1913	50	76
Milestone, Sask.	85-C	1913	70	89
Milk River, Alta.	213-C, 214-C	1915	25	37
Millbrook, Ont.	915, 916	1919	15	24
Mille Roches, Ont.	895	1919	12	21
Mill rton, N.B.	47-G	1916	152	178
Mimico, Ont.	245-G	1919	17	25
Mine Centre, Ont.	42-E	1916	158	183
Minto, Y.T.	106	1912	30	30
Mirror, Alta.	63-F	1916	165	187
Mission, B.C.	30-J	1918	24	42
Molson, Man.	10-F	1915	17	33
Monarch, Alta.	84-D	1917	261	304
Monckland, Ont.	102	1917	285	320
Moncton, N.B.	132-B, 133-B, 134-B	1913	45	73
"	373-B, 374 B, 132-B	1914	217	233
"	132-B	1916	146	174
Monk, Que.	385-B	1917	245	289
Montague, Y.T.	69	1912	28	28
Mont Carmel, Que.	28-G	1917	248	292
Montebello, Que.	848, 849	1919	8	18
Montmagny, Que.	566-B	1917	247	291
Montreal, Que.	807 to 825	1918	13, 14	35
Montreal West, Que.	811 to 813	1918	13	35
Mooretown, Ont.	362	1914	221	236
Moosajaw, Sask.	94-C, 95-C, 96-C	1913	71	89
"	103-C	1914	229	241
Morden, Man.	7-C, 8-C	1913	66	87
Morrisburg, Ont.	904, 905	1919	12	21
Morse, Sask.	116-C, 117-C	1914	229	241
Mortlach, Sask.	110-C	1914	229	241

ALPHABETICAL LIST OF CITIES, TOWNS AND VILLAGES AT OR NEAR WHICH BENCH-MARKS HAVE BEEN ESTABLISHED—Continued.

Place	B.M. Number	Year of Publication	Description	Elevation
Mountain, Ont.	111	1917	Page 285	Page 320
Moyie, B.C.	181-D	1917	267	307
Mulgrave, N.S.	185-B	1913	48	75
Muniac, N.B.	37-B	1917	277	314
Murrayville, B.C.	23-J	1916	170	191
Musquash, N.B.	91-B, 92-B	1917	279	316
Myrtle, Ont.	219-G	1919	14	23
Mystic, Que.	65	1917	282	318
Nairn, Ont.	579, 580	1916	154	181
Napadogan, N.B.	323-B, 324 B	1914	215	232
Napanee, Ont.	149 to 150-A-2	1917	287	321
Napierville, Que.	586-B, 587-B	1918	8	32
Napinka, Man.	41-C	1913	68	88
Nappan, N.S.	CMXIX	1916	†	173
Nauwigewauk, N.B.	107 B	1913	44	73
Nelson Jet., N.B.	47-G-2	1916	152	178
Newbury, Ont.	242	1913	56	81
Newcastle, Ont.	176	1913	53	79
New Dayton, Alta.	206-C, 207-C	1915	24	36
New Germany, N.S.	469-B-2	1916	147	175
New Glasgow, N.S.	160 B	1913	47	74
New Hamburg, Ont.	102-E, 103-F	1918	15	36
New Norway, Alta.	68-F	1916	165	187
New Westminster, B.C.	9 J to 13 J	1916	169	190
Nictaux, N.S.	480-B	1916	148	175
Ninga, Man.	29-C	1913	67	87
Nipigon, Ont.	785	1918	21	40
Nobleford, Alta.	79-D	1915	25	38
Nordenskiöld, Y.T.	47	1912	27	27
Northfield, Ont.	494	1914	219	235
North Lake, Ont.	106-E	1916	162	185
North Lancaster, Ont.	887	1919	12	20
North Portal, Sask.	†	1913	88	88
Northwood, Ont.	245	1913	57	81
Norton, N.B.	113-B	1913	44	73
Norton Mills, Vermont.	23, 24, 25	1917	284	319
Norwood, Ont.	196-G	1919	13	22
Notch Hill, B.C.	339-C	1918	31	45
Notre-Dame-du-Lac, Que.	64-B	1917	278	314
Onk Bay, N.B.	4-B	1917	275	313
Oakville, Ont.	193	1913	55	80
Oban, Sask.	14-H	1915	20	34
Okotoks, Alta.	60-D	1915	26	38
Orangeville, Ont.	267	1913	58	82
Osgoode, Ont.	117-A, 118-A	1913	52	78
Oshawa, Ont.	178-A, 179-A, 179	1913	54	79
Osler, Sask.	36-D	1914	228	240
Ottawa, Ont.	124-A, 125-A	1913	53	78
"	503, 504, 124-A	1914	220	235
Owen Sound, Ont.	286, 287, 288	1913	60	82
Oxbow, Sask.	55-C	1913	69	88
Oxford, Ont.	114	1917	286	320
Oxford, N.S.	136-B	1913	46	74
Oxford Jet., N.S.	135-B	1913	45	74
"	135-B	1916	146	173
Painsec, N.B.	MDXLIH	1916	†	174
Pakenham, Ont.	68-G, 69-G	1917	250	293
Palgrave, Ont.	376	1913	64	86
Palmerston, Ont.	305	1913	61	83
"	305	1918	16	37
Papineauville, Que.	850, 850-A	1919	8	18
Paquette, Que.	557-B	1916	153	180
Paris, Ont.	222	1913	55	80
Parkbeg, Sask.	111-C	1914	229	241
Park Head Jet., Ont.	291	1913	60	83
Parkhill, Ont.	346	1914	221	236

† International boundary monument. † Refer to Public Works Dept.

ALPHABETICAL LIST OF CITIES, TOWNS, AND VILLAGES AT OR NEAR WHICH BENCH-MARKS HAVE BEEN ESTABLISHED—Continued.

Place	B. M. Number	Year of Publication	Elevation	
			Page	Page
Parry Sound, Ont.	419, 420	1914	223	237
Pasqua, Sask.	93-C	1913	71	89
Pelly, Y. T.	173, 174	1912	30	30
Pense, Sask.	99-C	1913	71	89
Perth, Ont.	112 G to 115-G	1917	253	295
Perth, N.B.	39 B	1917	277	314
Peterboro, Ont.	292 G to 295 C	1919	14	22
Petiteodiac, N.B.	123-B	1913	45	73
Piapot, Sask.	141 C	1914	231	241
Pickering, Ont.	180-A-2	1913	54	79
Piedmont, N.S.	195-B	1913	47	74
Pieerson, Man.	46-C	1913	68	88
Pike Creek, Ont.	253	1913	57	81
Pilot Mound, Man.	15-C	1913	67	87
Pincher, Alta.	94-D	1917	262	304
Pinewood, Ont.	20-E	1914	226	239
Pinto, Sask.	67-C	1913	69	88
Plaster Rock, N.B.	391-B, 392-B	1914	213	232
Plessisville, Que.	665 B, 669-F	1918	12	34
Pointe-du-Lac, Que.	711-B	1919	10	19
Pointe-Gatineau, Que.	861, 864	1919	9	18
Pomquet, N.S.	76-B	1913	48	74
Pontypool, Ont.	213 G	1919	14	22
Portal, North Dakota	3	1913	88	88
Port Arthur, Ont.	93 E to 95-E	1916	161	184
"	93 E	1918	21	40
Port Clyde, N.S.	412 B	1915	12	29
Port Colborne, Ont.	135-F to 137-F	1918	17	33
Port Dalhousie, Ont.	133 E, 134-F	1918	17	38
Porthill, Idaho	198 D	1917	268	307
Port Hope, Ont.	172, 172-A, 17			
"	920, 921	1919	16	24
Port Robinson, Ont.	212	1913	63	85
Port Saxon, N.S.	441-B	1915	12	29
Port Union, Ont.	182	1913	51	79
Port Whitby, Ont.	927	1919	16	24
Prescott, Ont.	118, 119, 913, 914	1919	13	21
Preston, Ont.	83 F, 84-F	1918	14	36
Prince Albert, Sask.	47-D, 48-D, 49-D	1914	228	240
Princeton, Ont.	224	1913	55	80
Princeville, Que.	668 B	1918	12	31
Pulnico, N.S.	454 B	1915	13	30
Quarryville, N.B.	45 C	1916	152	178
Rainy River, Ont.	17 I	1914	226	239
Reford, Sask.	18 H	1915	20	34
Regina, Sask.	1 D, 2 D, 3 D	1913	71	90
Renfrew, Ont.	595, 596, 597	1915	17	32
"	595	1917	251, 254	291, 299
Resplendent, B.C.	117 H, 153 J	1918	29	44
Revelstoke, B.C.	311 C to 314-C	1917	271	310
Richford, Vt.	55	1917	282	318
Richmond, Que.	639 B, 640 B	1918	10	33
River Beaudette, Que.	D1, XXXVII	1917	4	322
River Glade, N.B.	125 B	1913	45	73
Rivières-du-Loup, Que.	76 B, 77 B, 78 B	1917	279	315
Rivière-Quellelet, Que.	M1, XXXVII	1917	4	292
Roche-Percée, Sask.	65 C	1913	69	88
Rock Island, Que.	33 A	1913	49	75
Romford, Ont.	192	1914	224	238
Roosevelt, Minn.	13 F	1914	226	239
Rosedale, B.C.	56-F	1918	24	42
Rose Point, Ont.	565	1915	13	31
Rosport, Ont.	768	1918	20	40
Rosthern, Sask.	40 D	1914	228	240
Rothessy, N.B.	103-B, 104-B	1913	44	73
Rouleau, Sask.	88 C, 89 C	1913	70	89

* International boundary monument.

† Refer to Publication Works Dept.

ALPHABETICAL LIST OF CITIES, TOWNS, AND VILLAGES AT OR NEAR WHICH BENCH MARKS HAVE BEEN ESTABLISHED—Continued.

Place	B.M. Number	Year of Publication	Description	Elevation
Rouse Point, N. Y.	581 B	1918	Page 8	Page 32
Rush Lake, Sask.	120 C	1911	230	241
Russell, Ont.	499	1911	220	235
Ryley, Alta.	17 H, 48 H	1916	163	186
Sable River, N. S.	127 B	1915	11	29
Sackville, N. B.	MCCXXVI, etc.	1916	†	174
Sailoon Arm, B. C.	335 C	1918	30	45
Sandstone, Alta.	58 D	1915	26	38
Sarnia, Ont.	357, 358, 359, 360	1914	221	236
Saskatoon, Sask.	29 D to 33 D	1914	227, 228	240
Sault Ste. Marie, Ont.	632, 633	1916	157	182
Sault Ste. Marie, Mich.	636	1916	157	182
Savona, B. C.	81 J	1918	26	43
Sawyerille, Que.	552 B	1916	153	180
Schreiber, Ont.	763, 761	1918	20	40
Scotia Jet., Ont.	553	1915	14	31
Scotstown, Que.	16 A-2	1913	49	76
Scott, Sask.	19 H	1915	20	34
Shag Harbour, N. S.	149 B	1915	12	29
Shallow Lake, Ont.	290	1913	60	83
Shannonville, Ont.	151	1917	288	321
Sharbot Lake, Ont.	121 G	1917	253	295
Shelburne, N. S.	133 B to 136 B	1915	11, 12	29
Shelburne, Ont.	271	1913	59	82
Sherbrooke, Que.	1, 2, 3	1917	283	319
"	35, 36	1917	281	317
"	3	1918	10	33
Sicamous, B. C.	330 C	1918	30	45
Siegas, N. B.	51 B	1917	277	314
Sirdar, B. C.	203 D	1917	268	308
Slate River, Ont.	87 E	1916	161	184
Smiths Falls, Ont.	88 G, 89 G			
	107 C, 108 G	1917	251 to 253	295
South Durlam, Que.	635 B	1918	10	33
South Maitland, N. S.	528 B, 529 B	1916	145	172
South Stukely, Que.	45	1917	281	317
Spence Bridge, B. C.	67 J, 68 J	1918	25	42
Spillimacheen, B. C.	159 D	1917	265	306
Sprague, Man.	10 E	1914	225	239
Springfield, N. S.	472 B	1916	447	175
Springhill, Que.	19 A 2, 20 A	1913	50	76
Springhill Jet., N. S.	C-M-X	1916	†	173
Sprucedale, Ont.	556	1915	14	31
Sprucegrove, Alta.	64 H	1917	271	311
Stanbridge, Que.	67	1917	282	318
Stanley, Ont.	86 E	1916	161	184
Stanstead, Que.	34	1913	49	75
Steele, B. C.	138 D	1917	264	305
Steehon, Ont.	634, 635	1916	157	182
Stellarton, N. S.	MCC C	1913	†	75
Stephen, Minnesota.	1 C	1913	66	87
Stevens, Y. T.	148	1912	31	31
Stewart Crossing, Y. T.	162, 163	1912	32	32
Stickney, N. B.	32 B	1917	276	313
Stirling, Alta.	203 C, 201 C	1915	24	36
Stittville, Ont.	55-G	1917	249	293
Stoney Creek, Ont.	201	1913	63	85
Stoney Point, Ont.	250	1913	57	81
Stonyplain, Alta.	65 H	1917	271	311
Stottsville, Que.	79	1917	280	317
Stratford, Ont.	106-F to 108-F	1918	15	36
Sudbury, Ont.	454, 454-A	1914	225	238
"	567-A	1916	154	181
Sumas, Wash.	26-J, 27-I	1916	170	191
Sussex, N. B.	117-B	1913	44	73
Sutton, Que.	52	1917	282	318
Swalwell, Alta.	51 F	1916	164	187
Sweetgrass, Montana.	216-C †	1915	25	37
Swift Current, Sask.	126-C, 127-C	1914	230	241

† Refer to Public Works Dept. † Also bench-mark in international boundary monument.

ALPHABETICAL LIST OF CITIES, TOWNS, AND VILLAGES AT OR NEAR WHICH BENCH MARKS HAVE BEEN ESTABLISHED—*Continued.*

Place	B.M. Number	Year of Publication	Description	Elevation
St. Agapit, Que.	653 B to 655 B	1918	Page 11	Page 34
St. Alexandro, Que. (Kamouraska Co.),	M C L I	1917	‡	292
St. Anne, Que. (Kamouraska Co.),	M X C I X	1917	‡	292
St. Anselme, Que.	211 B	1913	52	77
St. Armand, Que.	68, 69, 70	1917	282	318
St. Barthélemi, Que.	702-B	1919	10	19
St. Basile, Que. (Chambly Co.)	604 B	1918	9	32
St. Bruno, Que. (Chambly Co.)	602-B	1918	9	32
St. Catharines, Ont.,	207, 208	1913	63	85
St. Charles Jct., Que.,	M C X X X I	1917	‡	291
St. Cuthbert, Que.	700 B	1919	10	19
St. Edouard, Que. (Napierville Co.),	589 B	1918	8	32
St. Evariste, Que.	195 B, 196 B	1913	51	77
St. George, N.B.	83 B	1917	279	316
Ste. Hénéline, Que.	212 B	1913	52	77
St. Henri, Que. (Levis County),	216 B	1913	52	77
St. Hilaire, N.B.	262 B	1917	247	290
St. Hilaire, Que. (Rouville Co.),	607 B	1918	9	32
St. Honore, Que. (Témiscouata Co.),	70 B	1917	278	314
St. Hubert, Que.	600 B	1918	9	32
St. Hyacinthe, Que.,	611 B to 613 B	1918	9	32
	615-B	1918	10	33
St. Jean Port Joli, Que.,	M C V I	1917	‡	291
St. John, N.B.	97 B to 100 B	1917	280	316
St. Johns, Que.	75, 76	1917	280	317
St. Joseph-des-Lévis, Que.	220 B	1913	52	77
Ste. Julie, Que. (Mégantic Co.),	662 B	1918	11	31
Ste. Justine, Que. (Vaudreuil Co.),	879	1919	11	20
St. Lambert, Que.,	597 B-2, 598 B	1918	9	32
St. Leonard, N.B.,	50 B	1917	277	314
St. Liboire, Que.	626-B	1918	9	32
St. Louis, Que. (Beauharnois Co.),	88	1917	284	320
Ste. Madeleine, Que.,	609 B	1918	9	32
Ste. Malachie, Que.,	227 B	1917	241	289
St. Malo, Que. (Compton County),	555 B	1916	153	180
St. Margaret, N.S.	394 B	1915	9	28
St. Martin Jct., Que.,	829	1919	7	18
Ste. Marie, Que. (Beauce Co.)	209 B	1913	51	77
St. Marys, Ont.	110-F, 111-F	1918	15	37
St. Pacôme, Que.,	M X C V I	1917	‡	292
St. Paschal, Que.,	M C X I A V I	1917	‡	292
St. Philippe-de-Neri, Que.	27 G	1917	248	292
St. Pie, Que. (Bagot County)	618-B	1918	11	33
St. Pierre, Que. (Montmagny Co.),	565-B	1917	247	291
St. Polycarpe, Que.,	882	1919	11	20
St. Polycarpe Jct., Que.	92, 881	1919	11	20
Ste. Rosalie Jct., Que.,	614 B	1918	9	32
Ste. Rose, Que. (Laval Co.),	831	1919	7	18
Ste. Rose, Que. (Témiscouata Co.)	62-B	1917	278	314
Ste. Rose-de-Lima, Que.,	860, 861	1919	8	18
Ste. Scholastique, Que.,	835-A, 836	1919	7	18
St. Stephen, N.B.	2-B, 3-B	1917	275	313
St. Téléphore, Que.,	884	1919	11	20
Ste. Thérèse, Que.,	832	1919	7	18
St. Vallier, Que.,	M C X X V	1917	‡	291
St. Vincent-de-Paul, Que.	686 B	1919	9	19
Taber, Alta	86-C, 187-C	1915	23	36
Taft, B.C.	325-C	1918	30	44
Tukhuni, Y.T.,	20, 21	1912	25	25
Tako, Sask.,	20 H	1915	20	34
Tara, Ont.	293	1913	60	83
Tatamagouche, N.S.	147-B	1913	46	74
Terrebonne, Que.	687-B	1919	9	19

‡ Refer to Public Works Dept.

ALPHABETICAL LIST OF CITIES, TOWNS AND VILLAGES AT OR NEAR WHICH BENCH-MARKS HAVE BEEN ESTABLISHED—Continued.

Place	B.M. Number	Year of Publication	Description	Elevation
Thamesville, Ont.	243-A	1913	Page	Page
Thedford, Ont.	349	1914	57	81
Thorhill, Man.	9-C	1913	221	236
Thorold, Ont.	210, 211	1913	66	87
Three Hills, Alta.	53-F	1913	63	85
Three Rivers, Que.	713-B to 716-B	1916	164	187
Thurso, Que.	854	1919	10	19
Tielborne, Ont.	146-G	1919	8	18
Tofield, Alta.	50-II, 51-II	1917	255	300
Tompkins, Sask.	138-C	1916	163	186
Toronto, Ont.	185 to 189	1914	231	241
"	234-G to 241-G	1913	54	79
Tottenham, Ont.	377-A	1919	15, 16, 17	23, 25
Trenton, Ont.	161	1913	64	86
Tring Jet., Que.	204-B	1917	288	322
Trochu, Alta.	55-F	1913	51	77
Truro, N.S.	534-B to 537-B	1916	164	187
Tupperville, Ont.	369	1916	146	172
Tusket, N.S.	460-B	1914	222	236
Tweed, Ont.	174-G to 176-G	1915	13	30
"	"	1917	256	296
Unity, Sask.	22-II	1915	20	34
Upper Woods Harbour, N.S.	451-B	1915	12	29
Upton, Que.	627-B, 628-B	1918	9	32
Utopin, Ont.	387	1913	65	86
Valleyfield, Que.	89	1917	284	320
Valley Jet., Que.	207-B	1913	51	77
Van Buren, Maine.	50-B	1917	277	314
Vanceboro, Maine.	12-B, 13-B	1917	275	313
Vancouver, B.C.	1-J to 5-I	1916	168	190
Vankleek Hill, Ont.	871	1919	11	20
Vera, Sask.	23-II	1915	20	34
Verona, Ont.	152-G	1917	255	300
Versailles, Que.	72	1917	280	317
Victoriaville, Que.	670-B to 672-B	1918	12	34
Viking, Alta.	43-II	1916	162	185
Vulcan, Alta.	68-D, 69-D	1915	26	38
Wabamun, Alta.	69-II	1917	272	311
Wainwright, Alta.	36-II	1915	21	34
Wakfield, Que.	469, 470	1914	218	234
Wales, Ont.	897	1919	12	21
Walkerville, Ont.	255	1913	57	81
Wallaceburg, Ont.	367	1914	222	236
Walsh, Alta.	155-C	1915	22	35
Warman, Sask.	35-D	1914	228	240
Warner, Alta.	269-C, 210-C	1915	24	37
Warroad, Minn.	12-E	1914	226	239
Warwick, Que.	674-B, 675-B	1918	12	34
Waterloo, Ont.	98-F, 99-F	1918	15	36
Waterville, N.S.	489-B	1916	148	175
Waterville, Que.	9	1917	283	319
Watt, N.B.	8-B	1917	275	313
Webb, Sask.	132-C	1914	230	241
Webbwood, Ont.	545	1916	155	181
Welland, Ont.	213	1913	64	85
Welland Jet., Ont.	214	1913	64	85
Westchester, N.S.	CMLX	1916	†	†
Westfort, Ont.	89-E	1916	161	184
West Huntingdon, Ont.	181-G	1917	257	301
West Merigomish, N.S.	163-B	1915	47	74
Westmount, Que.	810	1918	13	35
Weston, Ont.	256-A	1913	58	82
West Toronto, Ont.	238-G to 241-G	1919	16, 17	25
Weyburn, Sask.	80-C, 81-C	1913	70	89
Whitby, Ont.	180-A, 926, 927	1919	16	24
Whitefish Lake, Que.	487	1914	219	234

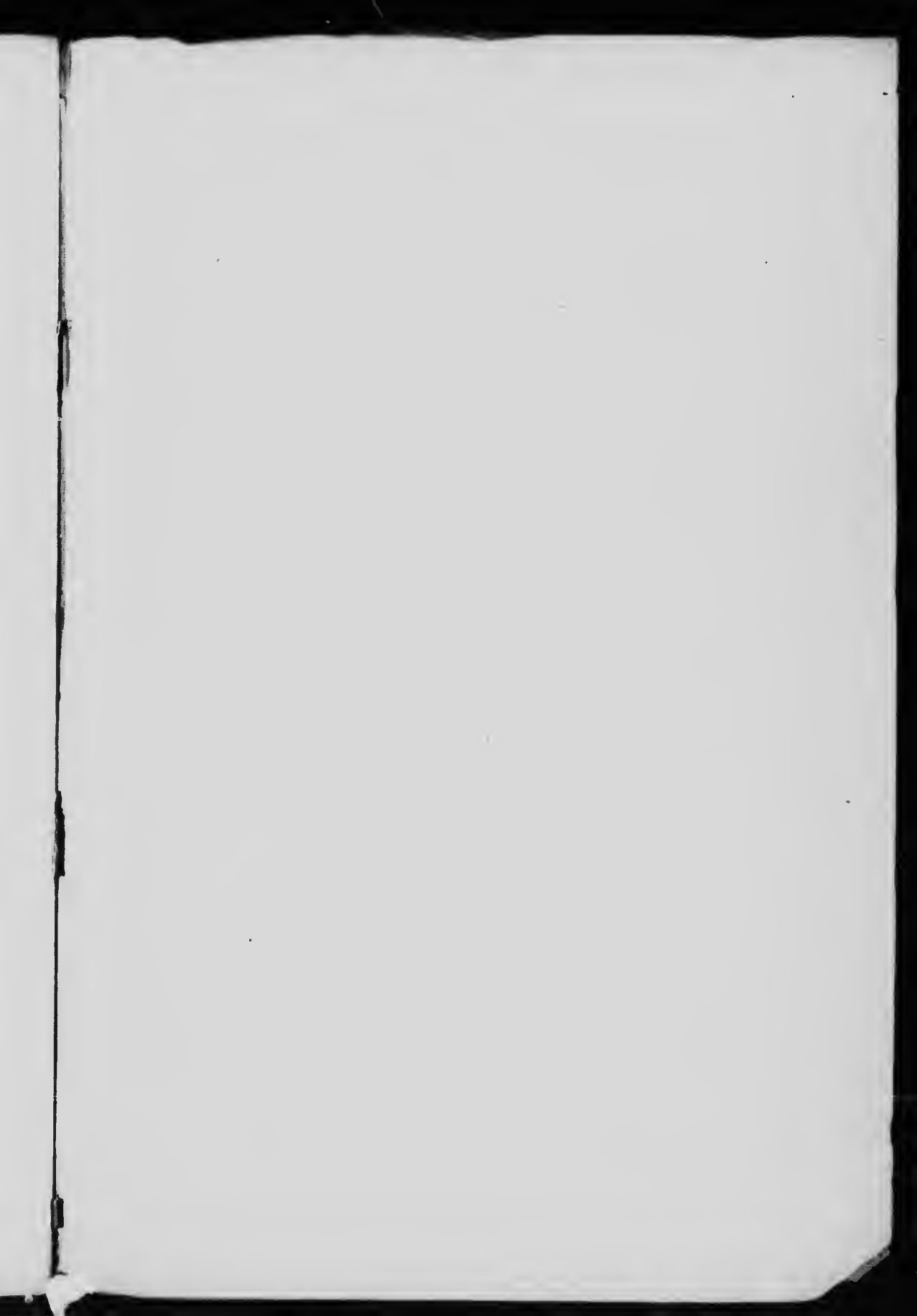
† Refer to Public Works Dept.

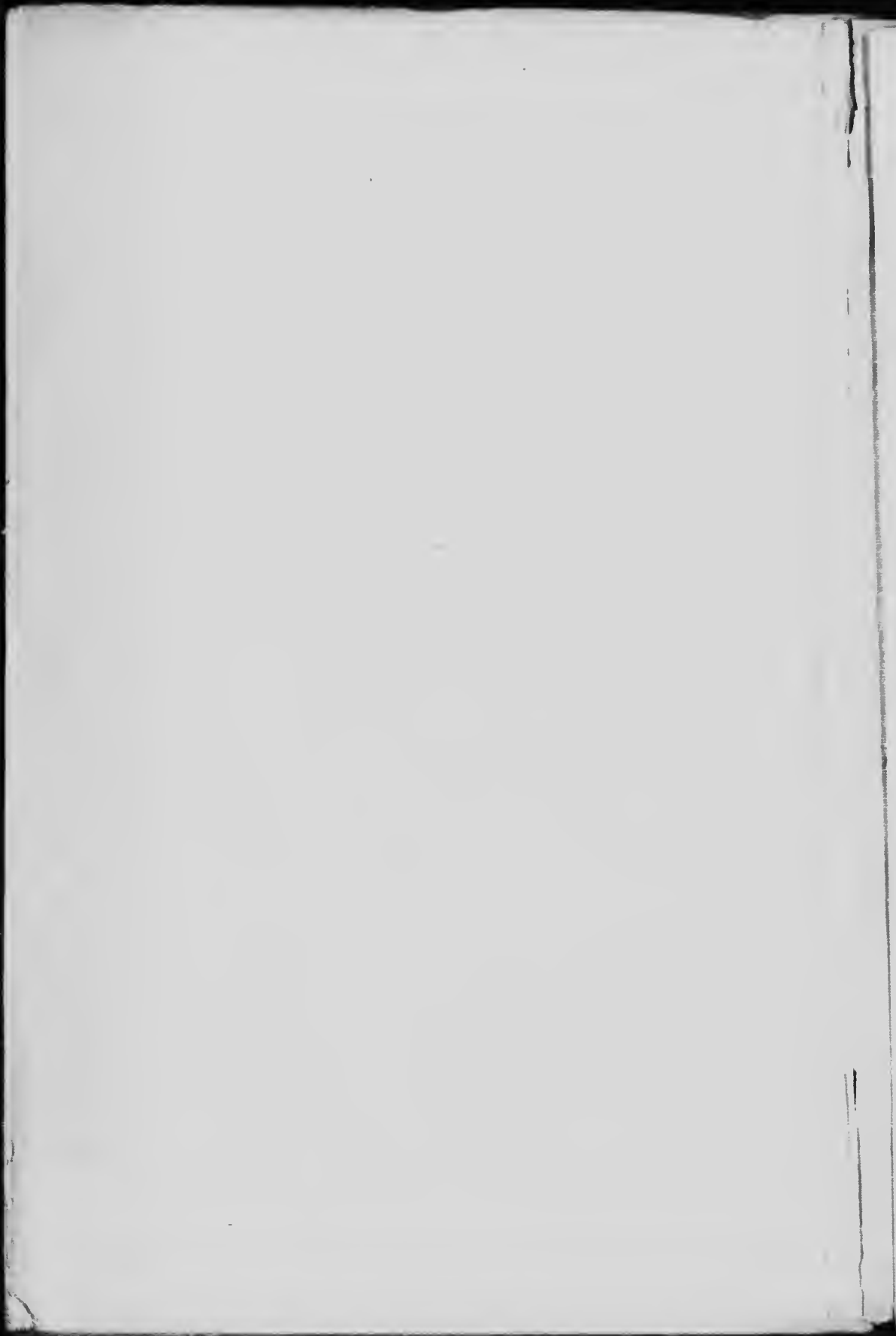
ALPHABETICAL LIST OF CITIES, TOWNS AND VILLAGES AT OR NEAR WHICH
BENCH-MARKS HAVE BEEN ESTABLISHED—*Continued.*

Place	B.M. Number	Year of Publication	Description	Elevation
Whitehorse, Y.T.	1	1912	Page 25	Page 25
Whitemouth, Man.	14 F	1915	18	33
White Pass, B.C.	42 R, 43 R	1912	23	23
White River, Ont.	723, 723 A	1918	18	39
Whiterock, B.C.	17 J, 18 J	1916	169	190
Whitewater, Man.	35 C	1913	68	88
Whitney, Ont.	536	1915	15	31
Wileox, Sask.	86 C, 87 C	1913	70	89
Williamstown, Ont.	890	1919	12	20
Wilnot, N.S.	485 B	1916	148	175
Winchester, Ont.	109	1917	285	320
Windsor, Ont.	255	1913	57	81
Windsor, N.S.	502 B to 505 B	1916	119	176
Windsor Jet., N.S.	MXXXIV	1916	‡	171
Windsor Mills, Que.	641 B, 645 B	1918	10	33
Wingham, Ont.	314	1913	61	83
Winnifred, Alta.	176 C	1915	23	35
Winnipeg, Man.	1 F, 2 F, 3 F	1915	17	33
Winona, Ont.	202	1913	63	85
Winter, Sask.	25 H	1915	20	34
Wolfville, N.S.	495 B to 497 B	1916	148, 149	175
Woodstock, Ont.	226, 227	1913	55	80
Woodstock, N.B.	25 B, 26 B, 27 B	1917	276	313
Worthington, Ont.	577	1916	154	181
Wounded Moose, Y.T.	179	1912	33	33
Yabk, B.C.	187 D	1917	267	307
Yamachiche, Que.	708 B	1919	10	19
Yarmouth, N.S.	463 B, 464 B, 465 B	1915	13	30
Yellow Grass, Sask.	83 C	1913	70	89
Yukon Crossing, Y.T.	97	1912	29	29
Zumbro, Sask.	27 H	1915	20	34

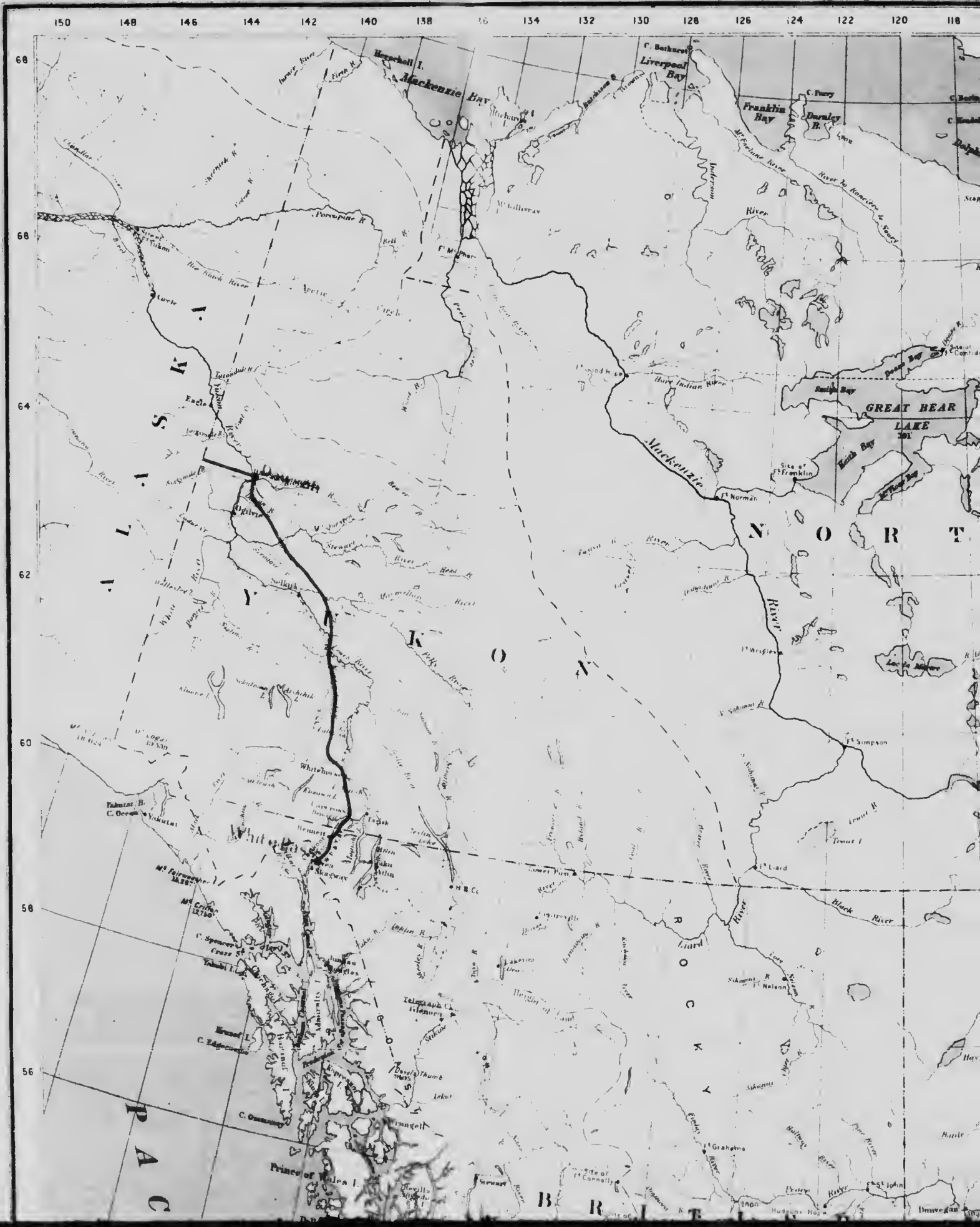
‡ Refer to Public Works Dept.

February, 1919.













74 72 70 68 66 64 62 60 58 56





58

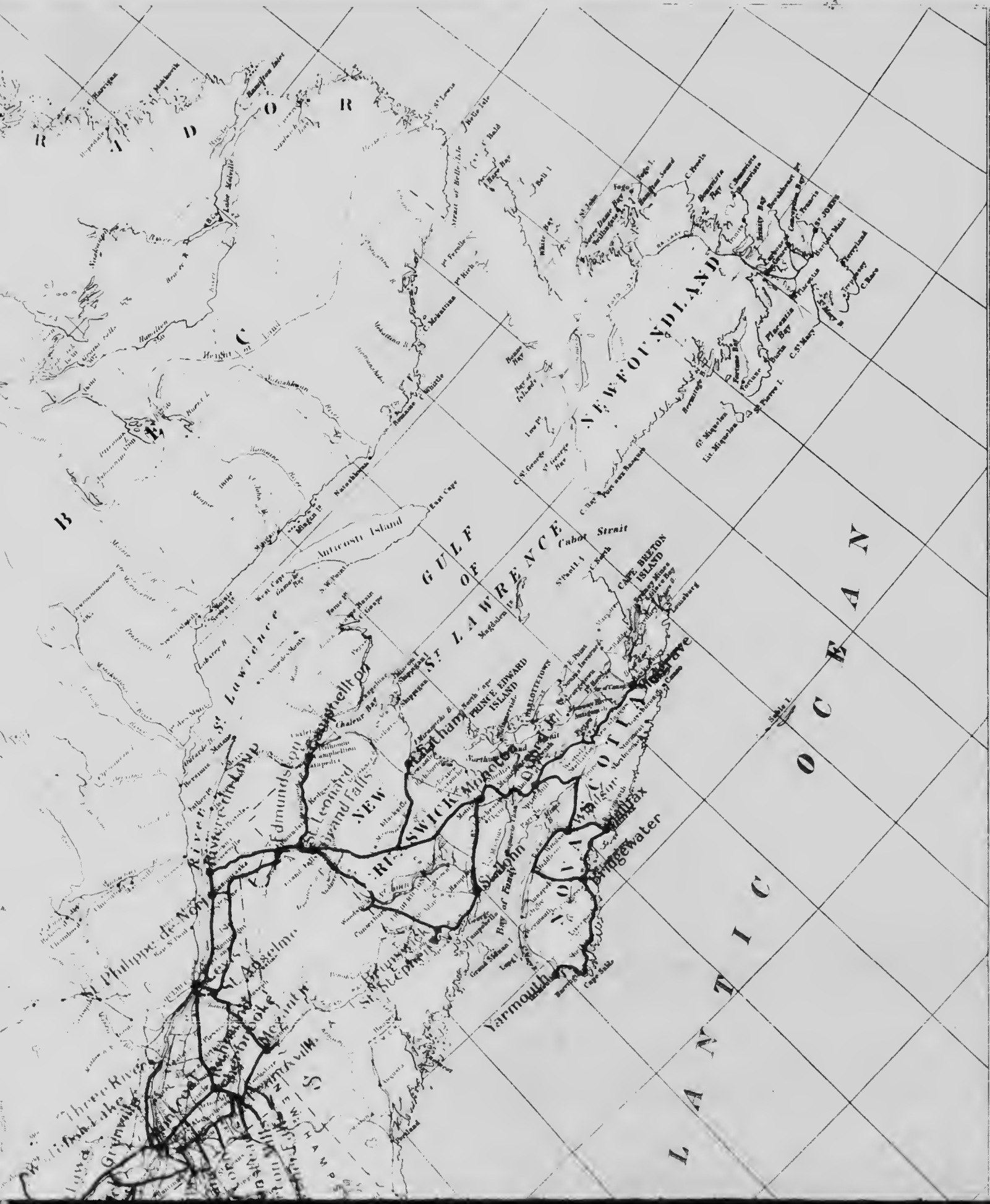
56

54

52

50

48



46

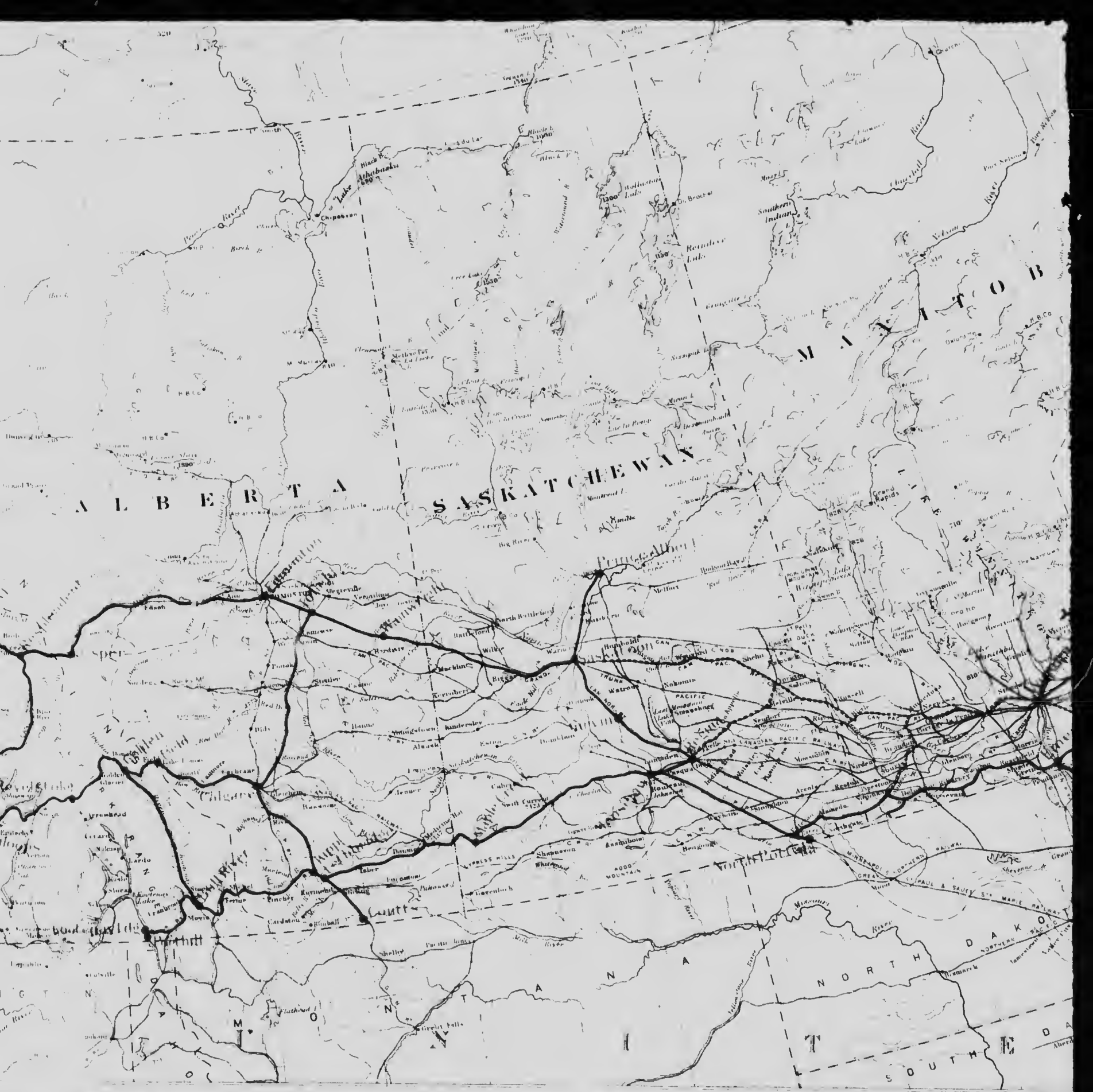
44

42

40

38



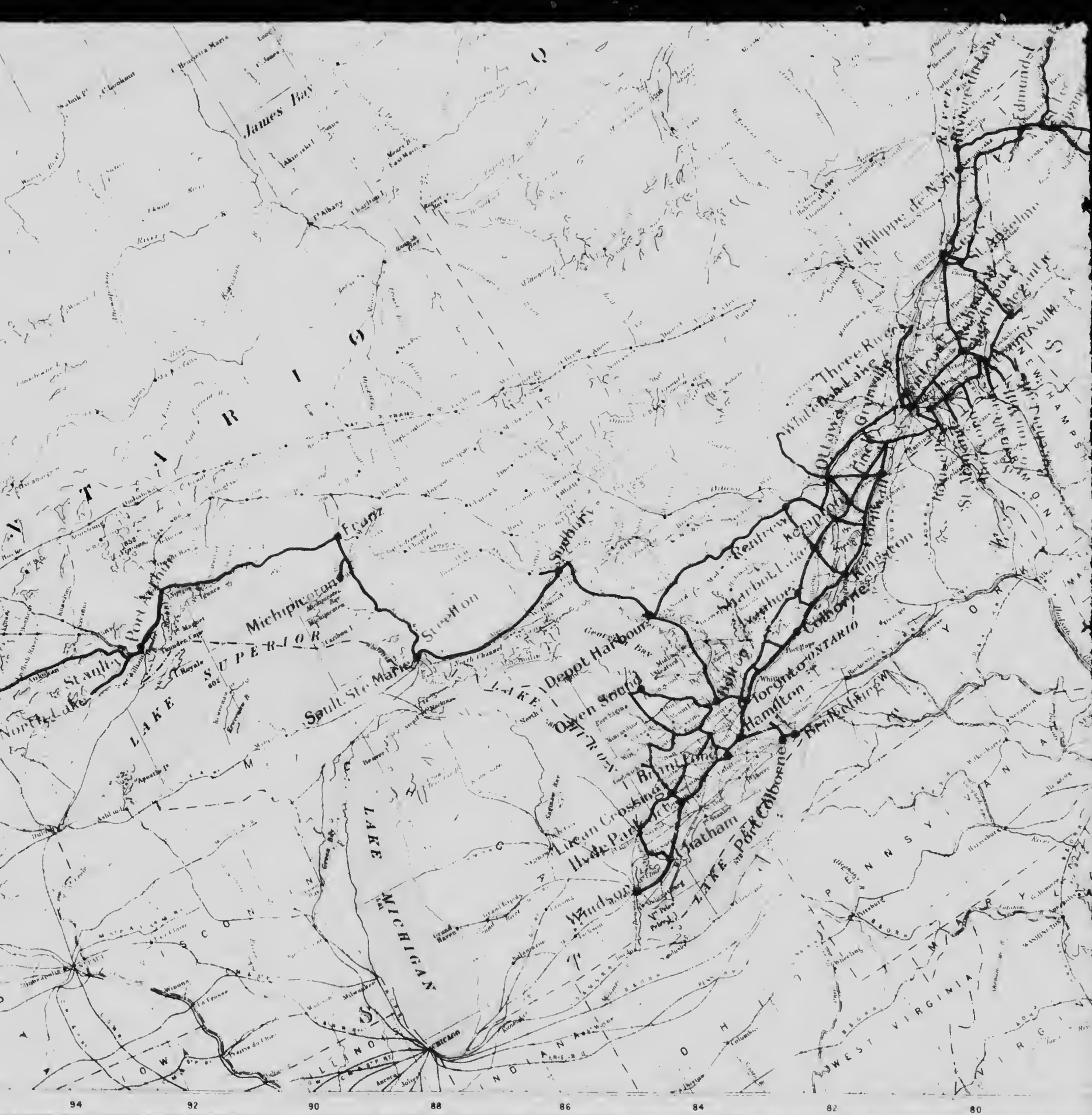


8 116 114 112 110 98 106 104 102 100



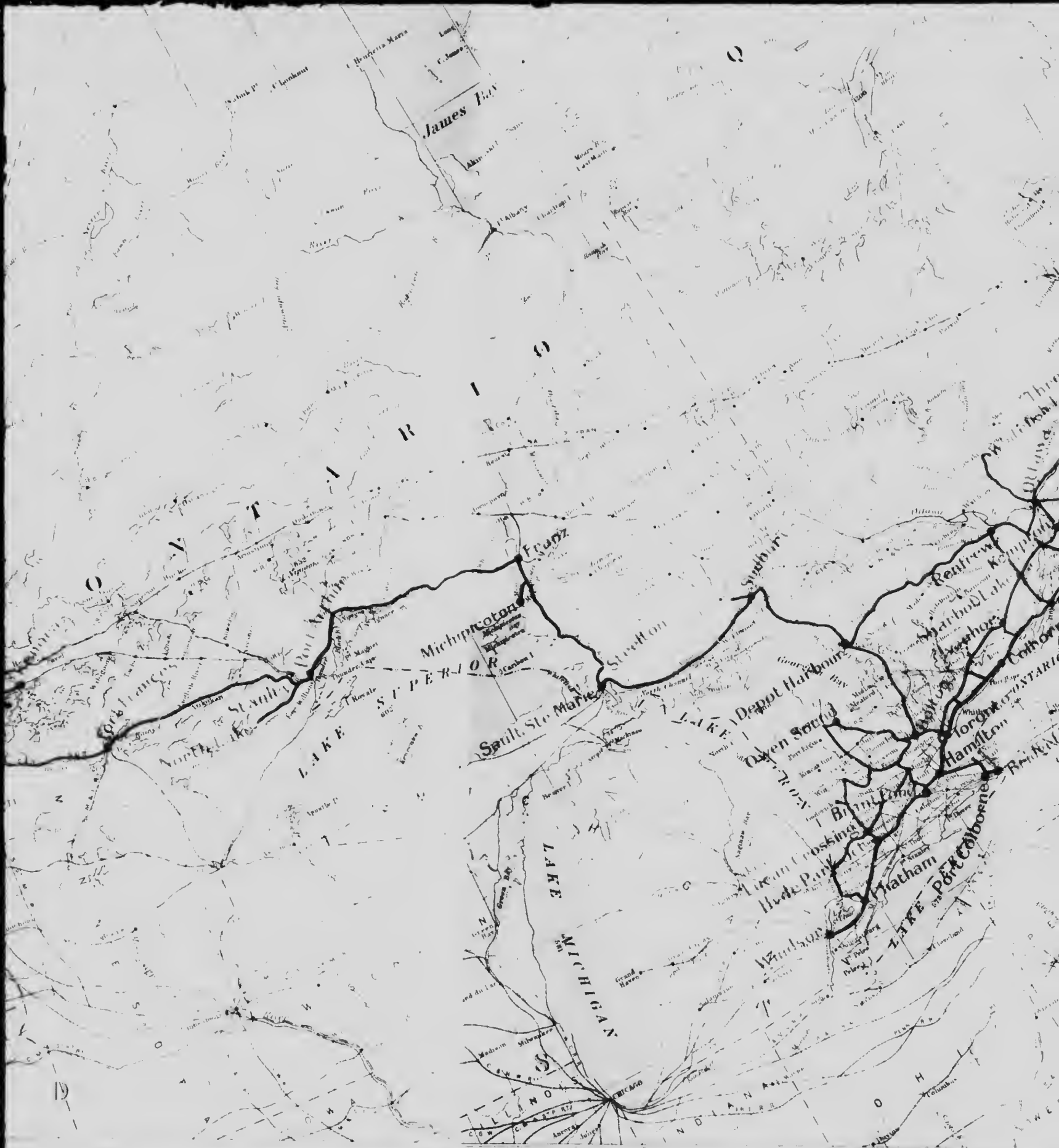


————— *Precise Levelling Published.*
- - - - - *Precise Levelling, Not Published.*



94 92 90 88 86 84 82 80

lished.
Published.



96

94

92

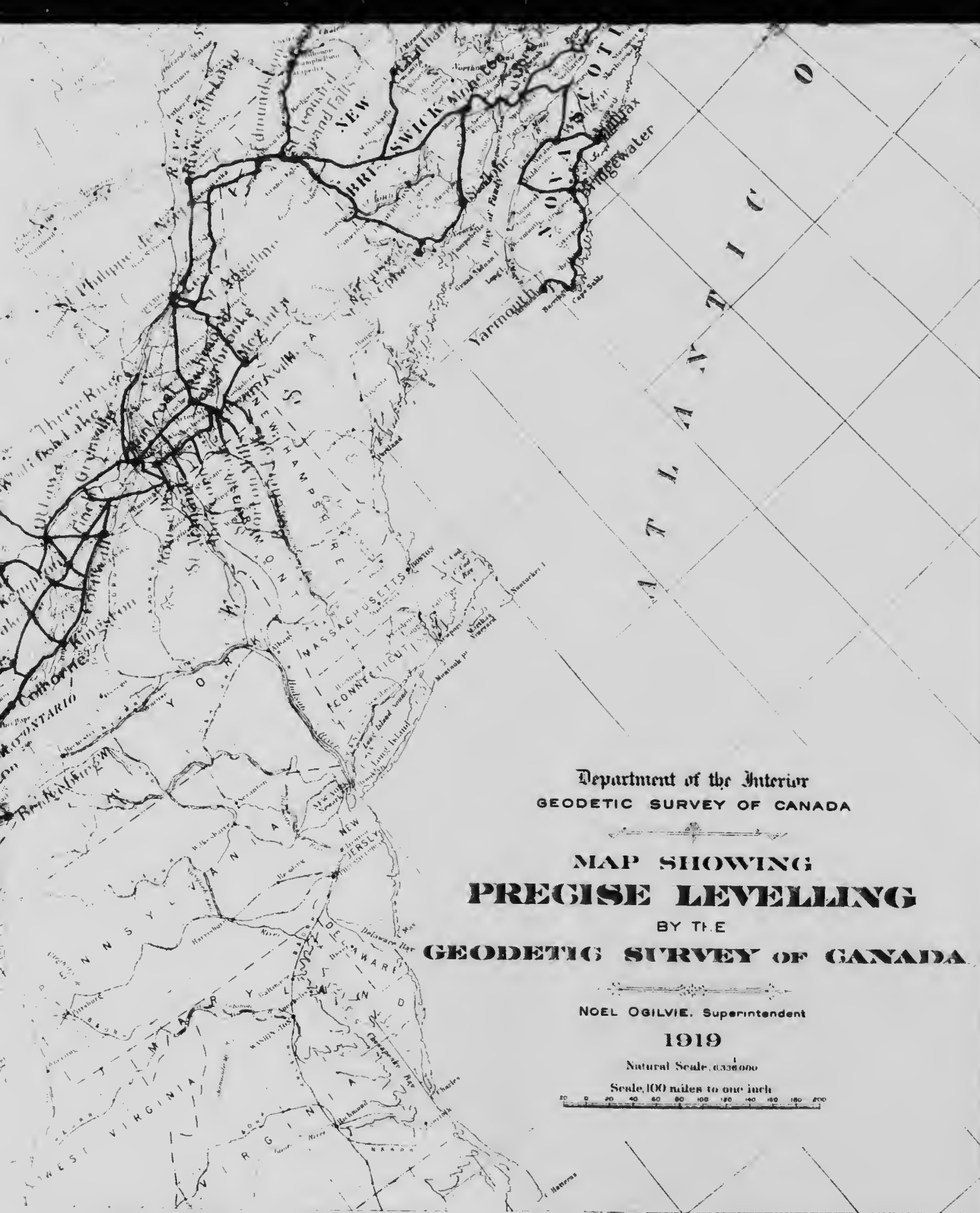
90

88

86

84

Leveling Published
Leveling Not Published



Department of the Interior
 GEODETIC SURVEY OF CANADA

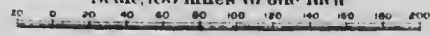
MAP SHOWING
PRECISE LEVELLING
 BY THE
GEODETIC SURVEY OF CANADA

NOEL OGILVIE, Superintendent

1919

Natural Scale 633600

Scale, 100 miles to one inch



40

38

36

34

32

80

78

76

74

72





