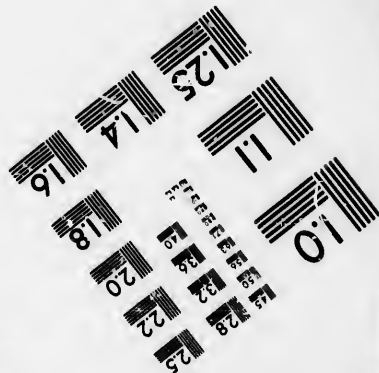
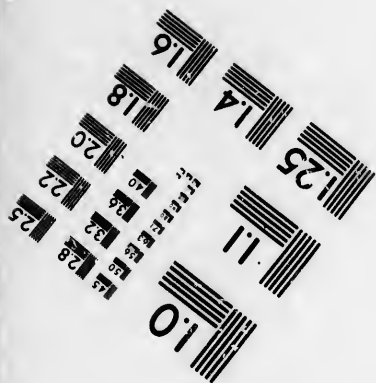
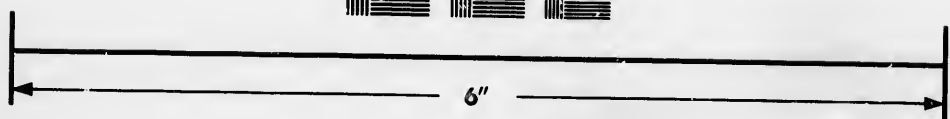
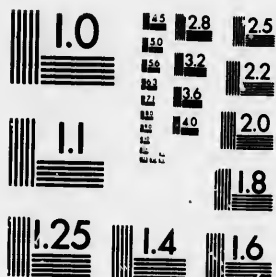


**IMAGE EVALUATION  
TEST TARGET (MT-3)**



**Photographic  
Sciences  
Corporation**

20 WEST MAIN STREET  
WEBSTER, N.Y. 14580  
(716) 872-4503



**CIHM/ICMH  
Microfiche  
Series.**

**CIHM/ICMH  
Collection de  
microfiches.**



Canadian Institute for Historical Microreproductions / Institut canadien de microreproductions historiques



**© 1986**

Technical and Bibliographic Notes/Notes techniques et bibliographiques

The institute has attempted to obtain the best original copy available for filming. Features of this copy which may be bibliographically unique, which may alter any of the images in the reproduction, or which may significantly change the usual method of filming, are checked below.

L'institut a microfilmé le meilleur exemplaire qu'il lui a été possible de se procurer. Les détails de cet exemplaire qui sont peut-être uniques du point de vue bibliographique, qui peuvent modifier une image reproduite, ou qui peuvent exiger une modification dans la méthode normale de filmage sont indiqués ci-dessous.

- Coloured covers/  
Couverture de couleur
- Covers damaged/  
Couverture endommagée
- Covers restored and/or laminated/  
Couverture restaurée et/ou pelliculée
- Cover title missing/  
Le titre de couverture manque
- Coloured maps/  
Cartes géographiques en couleur
- Coloured ink (i.e. other than blue or black)/  
Encre de couleur (i.e. autre que bleue ou noire)
- Coloured plates and/or illustrations/  
Planches et/ou illustrations en couleur
- Bound with other material/  
Relié avec d'autres documents
- Tight binding may cause shadows or distortion along interior margin/  
La reliure serrée peut causer de l'ombre ou de la distorsion le long de la marge intérieure
- Blank leaves added during restoration may appear within the text. Whenever possible, these have been omitted from filming/  
Il se peut que certaines pages blanches ajoutées lors d'une restauration apparaissent dans le texte, mais, lorsque cela était possible, ces pages n'ont pas été filmées.

- Coloured pages/  
Pages de couleur
- Pages damaged/  
Pages endommagées
- Pages restored and/or laminated/  
Pages restaurées et/ou pelliculées
- Pages discoloured, stained or foxed/  
Pages décolorées, tachetées ou piquées
- Pages detached/  
Pages détachées
- Showthrough/  
Transparence
- Quality of print varies/  
Qualité inégale de l'impression
- Includes supplementary material/  
Comprend du matériel supplémentaire
- Only edition available/  
Seule édition disponible
- Pages wholly or partially obscured by errata slips, tissues, etc., have been refilmed to ensure the best possible image/  
Les pages totalement ou partiellement obscurcies par un feuillet d'errata, une pelure, etc., ont été filmées à nouveau de façon à obtenir la meilleure image possible.

Additional comments: [Printed ephemera] 1 sheet (verso blank)  
Commentaires supplémentaires:

This item is filmed at the reduction ratio checked below/  
Ce document est filmé au taux de réduction indiqué ci-dessous.

10X	12X	14X	16X	18X	20X	22X	24X	26X	28X	30X	32X
				✓							

The copy filmed here has been reproduced thanks to the generosity of:

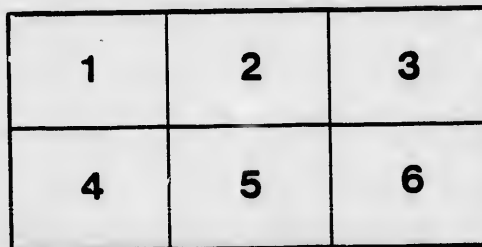
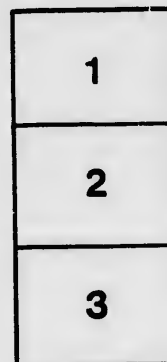
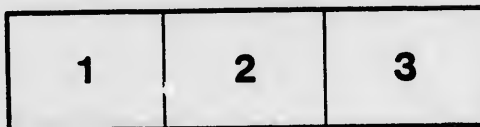
New Brunswick Museum  
Saint John

The images appearing here are the best quality possible considering the condition and legibility of the original copy and in keeping with the filming contract specifications.

Original copies in printed paper covers are filmed beginning with the front cover and ending on the last page with a printed or illustrated impression, or the back cover when appropriate. All other original copies are filmed beginning on the first page with a printed or illustrated impression, and ending on the last page with a printed or illustrated impression.

The last recorded frame on each microfiche sheet contain the symbol  $\rightarrow$  (meaning "CONTINUED"), or the symbol  $\nabla$  (meaning "END"), whichever applies.

Maps, plates, charts, etc., may be filmed at different reduction ratios. Those too large to be entirely included in one exposure are filmed beginning in the upper left hand corner, left to right and top to bottom, as many frames as required. The following diagram illustrates the method:



L'exemplaire filmé fut reproduit grâce à la générosité de:

New Brunswick Museum  
Saint John

Les images suivantes ont été reproduites avec le plus grand soin, compte tenu de la condition et de la netteté de l'exemplaire filmé, et en conformité avec les conditions du contrat de filmage.

Les exemplaires originaux dont la couverture en papier est imprimée sont filmés en commençant par le premier plat et en terminant soit par la dernière page qui comporte une empreinte d'impression ou d'illustration, soit par le second plat, selon le cas. Tous les autres exemplaires originaux sont filmés en commençant par la première page qui comporte une empreinte d'impression ou d'illustration et en terminant par la dernière page qui comporte une telle empreinte.

Un des symboles suivants apparaîtra sur la dernière image de chaque microfiche, selon le cas: le symbole  $\rightarrow$  signifie "A SUIVRE", le symbole  $\nabla$  signifie "FIN".

Les cartes, planches, tableaux, etc., peuvent être filmés à des taux de réduction différents. Lorsque le document est trop grand pour être reproduit en un seul cliché, il est filmé à partir de l'angle supérieur gauche, de gauche à droite, et de haut en bas, en prenant le nombre d'images nécessaire. Les diagrammes suivants illustrent la méthode.

rrata  
to

pelure.  
n à



32X

# CATALOGUE

OF

## ENGLISH GARDEN & B...

FOR SALE BY P. ROBERTS  
**DRUGGIST AND APOTHECARY**

No. 80 Prince William Street, (adjoining J. & S. ...)

### VEGETABLE SEEDS.

#### ASPARAGUS.

- BEANS**—Broad Windsor,  
 “ Early six week Dwarf,  
 “ Early China Dwarf,  
 “ Newington Wonder,  
 “ Caseknife,  
 “ Marrowfat,  
 “ Scarlet Runner Pole,  
 “ London Horticultural Pole,  
 “ White Dutch Runner,

- BEET**—Long Blood,  
 “ Long White,  
 “ Early Turnip Root Blood,  
 “ Mangel Wurtzel,

- CABBAGE**—Early York,  
 “ Early Battersea,  
 “ Flat Dutch,  
 “ Early Sugar Loaf,  
 “ Late York,  
 “ Large Drumhead,  
 “ Red Dutch, for pickling,  
 “ Shilling's Queen,  
 “ Green Globe Savoy,  
 “ Early Emperor,  
 “ Thousand Headed,  
 “ Nonpareil,  
 “ King of the Cabbages,  
 “ London Market,

- CARROT**—Early Horn,  
 “ Long Orange,  
 “ White Belgian,  
 “ Yellow Belgian,  
 “ Altringham,

- CAULIFLOWER**—Early Dutch,  
 “ Large Late,

- CELERY**—White Solid,  
 “ Seymour's Superb,  
 “ Giant Red,

- CLOVER**—White Dutch and Red,

- CRESS**—Double Curled,

- CUCUMBER**—Early Frame,  
 “ Long Green Prickly

- “ Early Scarlet,  
 “ Scarlet Turnip,  
 “ White Turnip,  
**SALSIFY**—Vegetable Oyster,  
**SPINACH**—Round,  
 “ Prickly,  
**SQUASH**—Vegetable Marrow,  
**TOMATO**.  
**TURNIP**—Early White Garden,  
 “ Early Snowball,  
 “ Yellow Garden Stone,  
 “ White Globe,  
 “ Large White Norfolk,  
 “ Yellow Aberdeen,  
 “ Purple Top Swede,  
 “ Green Top Swede,  
 “ Skirving's Improved,  
**VETCHES**—Spring.

### HERBS.

- Balm,  
 Lavender,  
 Sage,  
 Sweet Marjoram,  
 Summer Savory,  
 Thyme,  
 Pot Marigold,  
 Hyssop.

### FLOWERS.

[Those marked with a star are the best.]

- Alysson, Sweet,  
 Amaranthus, ...  
 Antirrhinum, ...  
 Atropa Belladonna,  
 Aster, Queen of the Meadow,  
 “ ...  
 Anemone,  
 A. ...  
 Euphonia, Lindley's,  
 B. ...  
 C. ...

# CATALOGUE

OF

## VEGETABLE & FLOWER SEEDS,

P. ROBERTSON INCHES,  
GROUNDSMAN AND APOTHECARY,

100, Market Street, (adjoining J. & A. M'MILLAN'S Book Store.)

Early Scarlet,  
Scarlet Turnip,  
White Turnip,  
VEGETABLE OYSTER—  
ROUND—  
Prickly,  
VEGETABLE MARROW—  
TO.  
EARLY WHITE GARDEN STONE—  
Early Snowball,  
Yellow Garden Stone,  
White Globe,  
Large White Norfolk,  
Yellow Aberdeen,  
Purple Top Swede,  
Green Top Swede,  
SKIRVING'S IMPROVED SWEDE,  
SPRING—

### HERBS.

er,  
Marjoram,  
er Savory,  
arigold,  
o.  
FLOWER  
Those mar  
n, Sweet  
anthus,  
inun  
ed, an  
a B  
man, an

apint,  
era, Lindley's,  
double mixed, an  
greener

Gloxinia,  
Heart's Ease,  
Heliotrope,  
Hollyhock,  
Hibiscus,  
Hawkweed,  
Iceplant,  
Jacobea, purple, an  
Lupinus, mixed, an  
Love Lies Bleeding, an  
Larkspur, flowering, an  
Lavender, an  
Lupinus Manns,  
Lavatera, Red, an  
" White, an  
Lily of the Valley,  
Lobelia,  
Marigold, African, an  
" French, an  
Malope, Grandiflora,  
Marvel of Peru,  
Musk, an  
Mosotis, blue, an  
Nignonette, an  
Noli-me-tangere,  
Nasturtium, scarlet, an  
" crimson dwarf, an  
Nemophila, mixed, an  
Nolana,  
Portulacca, mixed, an  
Palma Christi,  
Polyanthus,  
Potentilla,  
PINKS—Carnation,  
" Spanish,  
" Mixed,  
" Mullin,  
" Double Indian,  
POPPY—Mixed, an  
" Fringed, an  
" Carnation, an  
" Picotee,  
Prince's Feather, an  
Pansy, fine double,

" Long Orange,  
 " White Belgian,  
 " Yellow Belgian,  
 " Altringham,  
**CAULIFLOWER**—Early Dutch,  
 " Large Late,  
**CELERY**—White Solid,  
 " Seymour's Superb,  
 " Giant Red,  
**CLOVER**—White Dutch and Red,  
**CRESS**—Double Curled,  
**CUCUMBER**—Early Frame,  
 " Long Green Prickly,  
 " Short Prickly,  
**KALE**—Scotch Curled,  
**LEEK**—Scotch,  
**LETTUCE**—Drumhead—Malta,  
 " White Cabbage,  
 " White Cos,  
 " Green Cos,  
 " White Silesia,  
 " Victoria Cab,  
**MELON**—Pine Apple,  
 " Green Citron,  
 " Water,  
**ONION**—Strasburg,  
 " White Sp,  
 " Red,  
 " Silver Skin for pickling,  
**PARSLEY**—Double Curled,  
**PARSNIP**—Large Dutch,  
 " New Crowned,  
**PEPPER**—Black,  
**PEAS**—Charlton, 4 feet,  
 " Marrowfat, 6 feet,  
 " Dwarf Marrowfat, 4 feet,  
 " Imperial, 2 feet,  
 " Knight's Tall Marrow, 6 feet,  
 " Knight's Dwarf Marrow, 4 feet,  
 " Early Prince Albert, 4 feet,  
 " Champion of England,  
 " Tall Sugar, 6 feet,  
 " Daniel O'Rourke,  
 " King of the Marrows,  
**PUMPKIN**.  
**RADISH**—Long Salmon,

[Those mar  
 Alysson, Sweet  
 Amaranthus,  
 Antirrhinum, mixed, an  
 Atropa B,  
 Aster, C. man, an  
 "  
 An  
 A. Alpine,  
 A. Lindley's,  
 B. double mixed, an  
 C. Creeper,  
 C. Tuft, White, an  
 " Red, an  
 Canterbury Bells,  
 Catchfly,  
 Calceolaria,  
 Camellia,  
 Cineraria, an  
 Calliopsis,  
 Carnation,  
 Columbine,  
 Cowslip,  
 Chrysanthemum, double yellow  
 Clematis,  
 Convolvulus, major, an  
 " minor, an  
 Collinsia, mixed, an  
 Clarkia, Pulchella, an  
 Cockscomb, mixed,  
 Cyanus,  
 Dahlia, Double,  
 Dianthus,  
 Eschscholtzia.  
 " or California Poppy, } Yellow  
 " " } mixed  
 Everlasting,  
 Erysimum,  
 Fraxinella,  
 Forget-me-not, au  
 Eoxglove,  
 Gilia, an  
 Geranium,  
 Godetia,  
 Gladeolus,

All these SEEDS have been imported this year, direct from one of the best houses in their kinds.

ALSO—A full assortment  
**DRUGS, MEDICINES, PATENT MEDICINES**  
**DYE STUFFS, BELMONTINE AND PA**  
 CONSTANTLY ON HAND

BARNES & CO., PRINTERS, &c., 66 Princes Street

those mar  
 n, Sweet  
 anthus,  
 inus, *an*  
 B  
 man, *an*  
 p  
 ra, Lindley's,  
 Double mixed, *an*  
 reeper,  
 uft, White, *an*  
 Red, *an*  
 bury Bells,  
 y,  
 laria,  
 ia,  
 ria, *an*  
 osis,  
 ion,  
 bine,  
 p,  
 anthemum, double yellow, *an*  
 tis,  
 vulus, major, *an*  
 minor, *an*  
 sia, mixed, *an*  
 a, Pulchella, *an*  
 comb, mixed,  
 s,  
 , Double,  
 us,  
 choltzia.  
 California Poppy, } Yellow, *an*  
 " " } mixed, *an*  
 sting,  
 mnum,  
 ella,  
 -me-not, *an*  
 ve,  
 an  
 um,  
 ia,  
 ulus,

Potentilla,  
 PINKS—Carnation,  
 " Spanish,  
 " Mixed,  
 " Mullin,  
 " Double Indian,  
 POPPY—Mixed, *an*  
 " Fringed, *an*  
 " Carnation, *an*  
 " Picotee,  
 Prince's Feather, *an*  
 Pansy, fine double,  
 Petunia, fine mixed,  
 Phlox, Drummond's, mixed,  
 Perilla, Nankin,  
 Primula Sinensis,  
 Rondeletia,  
 Rose Campion,  
 Rose of Heaven,  
 Rocket, Sweet,  
 Ranunculus,  
 Salpiglossis,  
 STOCK—10 week, mixed, *an*  
 " " Scarlet,  
 " " Purple,  
 " " White,  
 " German, mixed,  
 Snapdragon,  
 Scabicus,  
 Sensitive Plant,  
 Sunflower, Double,  
 SWEET PEAS—Mixed, *an*  
 " Purple, *an*  
 " Scarlet, *an*  
 " Striped, *an*  
 " Painted Lady, *an*  
 Sweet William,  
 Sweet Sultan,  
 Verbena, mixed, *an*  
 Viola Odorata,  
 Venus Looking Glass, *an*  
 Virginia Stock,  
 Wallflower, blood,  
 Whitlavia,  
 Zinnia, varieties, *an*.

from one of the best houses in London, and are warranted of the best quality, and true to

ALSO—A full assortment of  
**T MEDICINES, PERFUMERY, PAINTS, OILS,**  
**ANTINE AND PARAFFINE OILS, &c., &c.,**  
 CONSTANTLY ON HAND.

CO., PRINTERS, &c., 66 Prince William Street.



