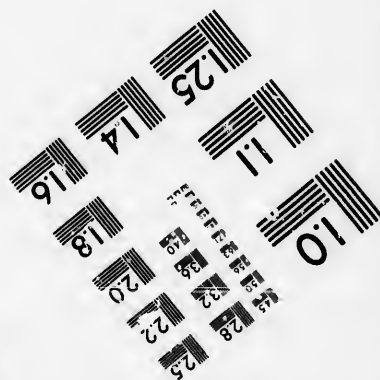
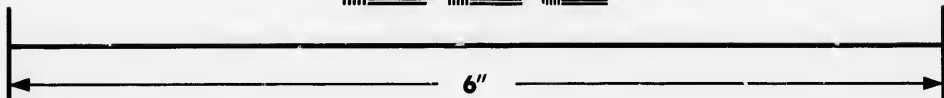
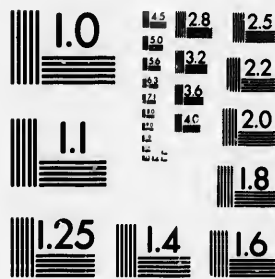


**IMAGE EVALUATION
TEST TARGET (MT-3)**



**Photographic
Sciences
Corporation**

23 WEST MAIN STREET
WEBSTER, N.Y. 14580
(716) 872-4503

18 20 22 25
18 20 22 25
18 20 22 25

**CIHM/ICMH
Microfiche
Series.**

**CIHM/ICMH
Collection de
microfiches.**



Canadian Institute for Historical Microreproductions / Institut canadien de microreproductions historiques

10
10
10

© 1985

Technical and Bibliographic Notes/Notes techniques et bibliographiques

The Institute has attempted to obtain the best original copy available for filming. Features of this copy which may be bibliographically unique, which may alter any of the images in the reproduction, or which may significantly change the usual method of filming, are checked below.

L'Institut a microfilmé le meilleur exemplaire qu'il lui a été possible de se procurer. Les détails de cet exemplaire qui sont peut-être uniques du point de vue bibliographique, qui peuvent modifier une image reproduite, ou qui peuvent exiger une modification dans la méthode normale de filmage sont indiqués ci-dessous.

- Coloured covers/
Couverture de couleur
- Covers damaged/
Couverture endommagée
- Covers restored and/or laminated/
Couverture restaurée et/ou pelliculée
- Cover title missing/
Le titre de couverture manque
- Coloured maps/
Cartes géographiques en couleur
- Coloured ink (i.e. other than blue or black)/
Encre de couleur (i.e. autre que bleue ou noire)
- Coloured plates and/or illustrations/
Planches et/ou illustrations en couleur
- Bound with other material/
Relié avec d'autres documents
- Tight binding may cause shadows or distortion along interior margin/
La reliure serrée peut causer de l'ombre ou de la distorsion le long de la marge intérieure
- Blank leaves added during restoration may appear within the text. Whenever possible, these have been omitted from filming/
Il se peut que certaines pages blanches ajoutées lors d'une restauration apparaissent dans le texte, mais, lorsque cela était possible, ces pages n'ont pas été filmées.
- Additional comments: [Printed ephemera] [3] p.
Commentaires supplémentaires:

- Coloured pages/
Pages de couleur
- Pages damaged/
Pages endommagées
- Pages restored and/or laminated/
Pages restaurées et/ou pelliculées
- Pages discoloured, stained or foxed/
Pages décolorées, tachetées ou piquées
- Pages detached/
Pages détachées
- Showthrough/
Transparence
- Quality of print varies/
Qualité inégale de l'impression
- Includes supplementary material/
Comprend du matériel supplémentaire
- Only edition available/
Seule édition disponible
- Pages wholly or partially obscured by errata slips, tissues, etc., have been refilmed to ensure the best possible image/
Les pages totalement ou partiellement obscurcies par un feuillet d'errata, une pelure, etc., ont été filmées à nouveau de façon à obtenir la meilleure image possible.

This item is filmed at the reduction ratio checked below/
Ce document est filmé au taux de réduction indiqué ci-dessous.

10X	14X	18X	22X	26X	30X
<input type="checkbox"/>	<input type="checkbox"/>	<input type="checkbox"/>	<input type="checkbox"/>	<input checked="" type="checkbox"/>	<input type="checkbox"/>
12X	16X	20X	24X	28X	32X

The copy filmed here has been reproduced thanks to the generosity of:

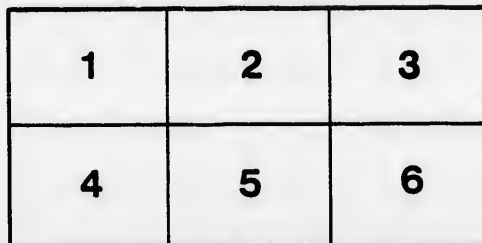
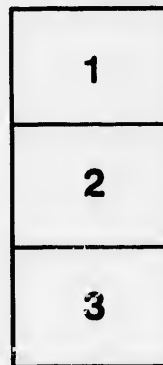
D. B. Weldon Library
University of Western Ontario
(Regional History Room)

The images appearing here are the best quality possible considering the condition and legibility of the original copy and in keeping with the filming contract specifications.

Original copies in printed paper covers are filmed beginning with the front cover and ending on the last page with a printed or illustrated impression, or the back cover when appropriate. All other original copies are filmed beginning on the first page with a printed or illustrated impression, and ending on the last page with a printed or illustrated impression.

The last recorded frame on each microfiche shall contain the symbol \rightarrow (meaning "CONTINUED"), or the symbol ∇ (meaning "END"), whichever applies.

Maps, plates, charts, etc., may be filmed at different reduction ratios. Those too large to be entirely included in one exposure are filmed beginning in the upper left hand corner, left to right and top to bottom, as many frames as required. The following diagrams illustrate the method:



L'exemplaire filmé fut reproduit grâce à la générosité de:

D. B. Weldon Library
University of Western Ontario
(Regional History Room)

Les images suivantes ont été reproduites avec le plus grand soin, compte tenu de la condition et de la netteté de l'exemplaire filmé, et en conformité avec les conditions du contrat de filmage.

Les exemplaires originaux dont la couverture en papier est imprimée sont filmés en commençant par le premier plat et en terminant soit par la dernière page qui comporte une empreinte d'impression ou d'illustration, soit par le second plat, selon le cas. Tous les autres exemplaires originaux sont filmés en commençant par la première page qui comporte une empreinte d'impression ou d'illustration et en terminant par la dernière page qui comporte une telle empreinte.

Un des symboles suivants apparaîtra sur la dernière image de chaque microfiche, selon le cas: le symbole \rightarrow signifie "A SUIVRE", le symbole ∇ signifie "FIN".

Les cartes, planches, tableaux, etc., peuvent être filmés à des taux de réduction différents. Lorsque le document est trop grand pour être reproduit sur un seul cliché, il est filmé à partir de l'angle supérieur gauche, de gauche à droite, et de haut en bas, en prenant le nombre d'images nécessaire. Les diagrammes suivants illustrent la méthode.

ails
du
odifier
une
page

trata
o

pelure,
à

32X

HAMILTON, 25th FEBRUARY, 1861.

SIR.

A Committee comprising members of the City Council, members of the Board of Trade, and a number of other Gentlemen, inhabitants of this City, have again had under their consideration, the serious burdens incurred by municipalities, in promoting the construction of Railways. Such burdens have necessarily increased the local taxes, and in consequence have a most discouraging effect upon the prosperity of many Municipalities.

The inhabitants of this and other Municipalities, petitioned Parliament for some act of relief last year, and the House of Assembly, by consent of the Government, appointed a Committee to inquire into the matter.

That Committee will resume its sittings at the approaching meeting of the House.

It is, however, very necessary, that the attention of the Legislature should be again drawn to the subject, and the undersigned is therefore instructed to respectfully request that you will submit for adoption the accompanying form of petition, by your Council or by the Inhabitants, and forward it to your representative, with the request that he will give it his best attention and support.

It would be of great advantage, were you to appoint a deputation of one or more gentlemen to proceed to Quebec (when the House meets) that united action may be taken to secure the object in view.

Be pleased to acknowledge this at your earliest convenience, and state whether your Municipality will petition, and if likely to authorize a deputation to visit Quebec for the purpose mentioned.

I have the honor to be, Sir,

Your most ob't serv't,

J. S. McKisson

To

The Warden

*County of Elgin
St. Thomas*

1861



1

**To the Honourable the Legislative Assembly of Canada, in
Provincial Parliament Assembled.**

The Petition of the Municipality of

HUMBLY SHEWETH :

That your Petitioners earnestly desire to bring under the consideration of your Honourable House, the injurious effects which *the large indebtedness* incurred by so many Municipalities for Railway Enterprise, has upon the best interests of the Country.

That as such indebtedness has necessarily caused increased taxation, and tends to discourage the Enterprise of Individuals and Communities, it must consequently, seriously affect the revenue of the Province. Your Petitioners would therefore impress on your Honourable House, the expediency and equity of enacting such a measure of relief in the emergency, as would have the effect of infusing a degree of life and energy, calculated to be felt throughout the country, and which would amply reimburse the Provincial Treasury in the improvement of the revenue.

That the Railway which your Petitioners have assisted, has contributed to the general advantage of the country.

Your Petitioners, therefore, pray your Honourable House, to pass an effectual measure of relief, relating to the Municipalities so indebted.

And your Petitioners will ever pray.

