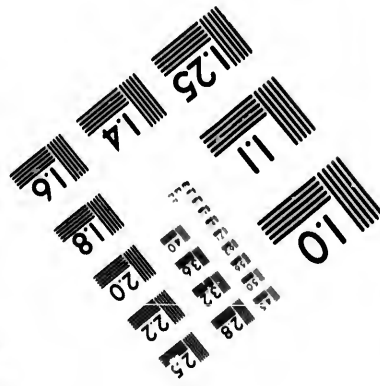
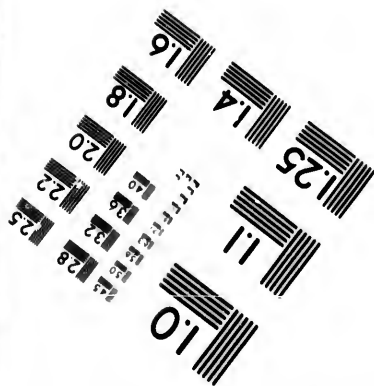
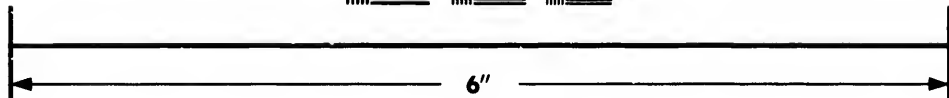
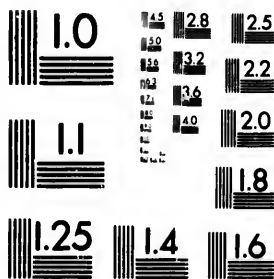


**IMAGE EVALUATION
TEST TARGET (MT-3)**



**Photographic
Sciences
Corporation**

23 WEST MAIN STREET
WEBSTER, N.Y. 14580
(716) 872-4503

**CIHM/ICMH
Microfiche
Series.**

**CIHM/ICMH
Collection de
microfiches.**



Canadian Institute for Historical Microreproductions / Institut canadien de microreproductions historiques

© 1985

The copy filmed here has been reproduced thanks to the generosity of:

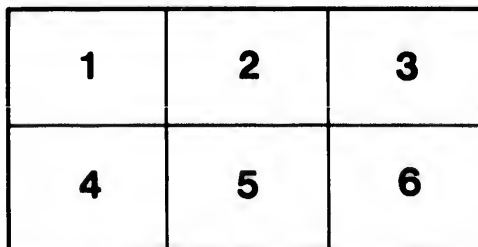
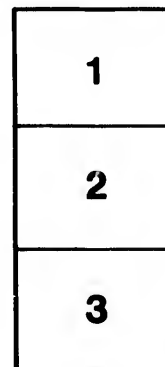
Douglas Library
Queen's University

The images appearing here are the best quality possible considering the condition and legibility of the original copy and in keeping with the filming contract specifications.

Original copies in printed paper covers are filmed beginning with the front cover and ending on the last page with a printed or illustrated impression, or the back cover when appropriate. All other original copies are filmed beginning on the first page with a printed or illustrated impression, and ending on the last page with a printed or illustrated impression.

The last recorded frame on each microfiche shall contain the symbol \rightarrow (meaning "CONTINUED"), or the symbol ∇ (meaning "END"), whichever applies.

Maps, plates, charts, etc., may be filmed at different reduction ratios. Those too large to be entirely included in one exposure are filmed beginning in the upper left hand corner, left to right and top to bottom, as many frames as required. The following diagrams illustrate the method:



L'exemplaire filmé fut reproduit grâce à la générosité de:

Douglas Library
Queen's University

Les images suivantes ont été reproduites avec le plus grand soin, compte tenu de la condition et de la netteté de l'exemplaire filmé, et en conformité avec les conditions du contrat de filmage.

Les exemplaires originaux dont la couverture en papier est imprimée sont filmés en commençant par le premier plat et en terminant soit par la dernière page qui comporte une empreinte d'impression ou d'illustration, soit par le second plat, selon le cas. Tous les autres exemplaires originaux sont filmés en commençant par la première page qui comporte une empreinte d'impression ou d'illustration et en terminant par la dernière page qui comporte une telle empreinte.

Un des symboles suivants apparaîtra sur la dernière image de chaque microfiche, selon le cas: le symbole \rightarrow signifie "A SUIVRE", le symbole ∇ signifie "FIN".

Les cartes, planches, tableaux, etc., peuvent être filmés à des taux de réduction différents. Lorsque le document est trop grand pour être reproduit en un seul cliché, il est filmé à partir de l'angle supérieur gauche, de gauche à droite, et de haut en bas, en prenant le nombre d'images nécessaire. Les diagrammes suivants illustrent la méthode.

ails
du
modifier
une
page

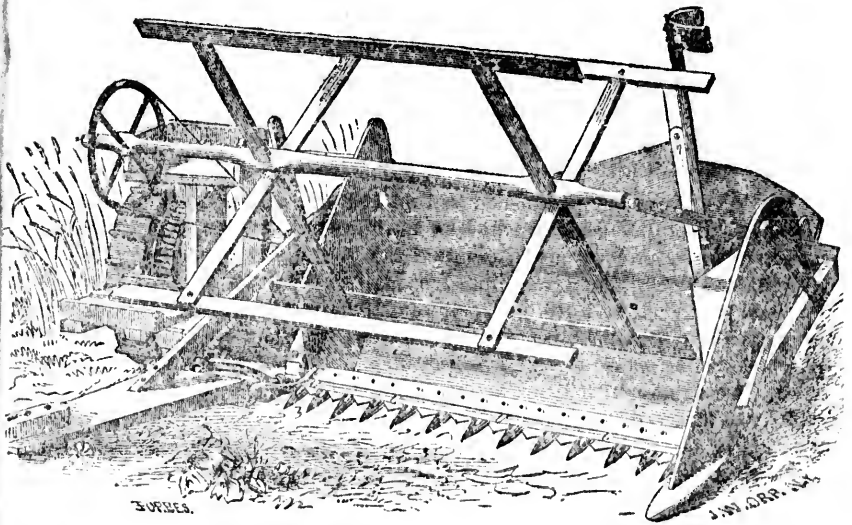
rata
o
elure,
à

32X

1957 P3

(12.)

MANNEY'S COMBINED
Reaping and Mowing Machine,
WITH WOOD'S IMPROVEMENTS.



MANUFACTURED BY
R. & R. S. PATTERSON,
BELLEVILLE, C. W.

BELLEVILLE:

PRINTED AT THE INTELLIGENCER BOOK AND JOB OFFICE, FRONT STREET.

P R E F A C E .

In presenting this Machine again to the Canadian public for the harvest of 1858, we shall not enter into an extended notice of its capabilities, as the extensive sale and severe tests to which it has been subjected, the past season, has brought it prominently into notice, and is a sufficient guarantee that it stands unrivalled. The fact of its taking the gold medal at the great American trial at Syracuse, as a combined Machine, with thirty four competitors from all sections of the United States, and also the fact of its taking the first prize at every State or County Fair where it has been presented for the last three years, establishes beyond a doubt the superiority of this Machine over all others.

We insert a few from among the many very flattering recommendations we have received from purchasers of our Machines (most of the past season,) and ask a perusal of them from those interested, as our improvements for 1857 have been fully tested and reported.

We have given our personal attention to the practical working of our Machines throughout the last harvest in different parts of the Province, and in all kinds of grass and grain, and this, with the suggestions of others, has enabled us still farther to improve our Machines for 1858. We use the best materials, and are fitting up our Machines regardless of expense, in a style of workmanship not to be surpassed,—and guarantee to the purchaser in all cases a good working Machine, upon a fair trial, or no sale. We would call particular attention to the points of our Machine, which we claim are superior to those manufactured by others.

The material enlargement of the ground and drive wheels—increased breadth of cut—arranged so that it can readily be thrown out of gear without stopping the team—the adding of a third wheel, which entirely relieves the horses from the weight upon their necks, and by an arrangement of the gear so that it will work well with a much slower pace of the horses. Our improvements for 1858, in addition to those enumerated, consist of a new and more perfect divider—an alteration in the construction which enables us to make a lighter Machine, without detracting from its strength—the grain can be more easily discharged, and by the removal of four bolts the frame-work can be detached (leaving only the cutting bar,) which will facilitate the cutting of badly lodged clover.

With these facts and the following Testimonials, Farmers who have use for a combined Reaping and Mowing Machine, cannot with due regard to their own interest, hesitate in ordering one of our Machines.

With many thanks for the liberal patronage heretofore extended to us,

We remain,

Very truly,

R. & R. S. PATTERSON.

BELLEVILLE, MAY 1st, 1858.

MESSRS
Gent
bined I
when I
You re
fortune
I think
Provinc
Machin
harvest
lishmen
admiral
is equal
horses.
come in
recomm
to get l

MESSRS
The
Patters
both in
I new
Machin
cut lod
grain w
chine i
light o
Conven
simple
easily a
while t
for cutt
withou
the Rec
Machin

TESTIMONIALS.

Amherst Island, Sept. 12th, 1857.

MESSRS. R. & R. S. PATTERSON :

Gentlemen,—Having had three years' experience with one of your combined Reaping and Mowing Machines, it will no doubt be pleasing to you when I inform you that the more I work the Machine, *the better I like it*. You really deserve the thanks of every Farmer who has had the good fortune to get one, especially as harvest laborers are so scarce and dear. I think you very justly merited the Prize offered by the Presidents of the Provincial Agricultural Association last year, for the "best Labor saving Machine." As above stated, I have used one of your Machines for three harvests, and it is now just as good as the day I got it from your establishment, and has not cost me half a dollar for repairs. It does its work admirably, both as a Mower and Reaper. No Machine I have ever seen is equal to it. I can cut from 12 to 15 acres per day, with one team of horses. I think your orders for Machines will increase yearly as they become introduced into the different sections of the Province, and I would recommend no Farmer to be *without one* for another season, if he wants to get his hay and grain *cut cheap and easy*.

JOHN HITCHINS.

East Oxford, Sept. 9th, 1857.

MESSRS. J. & S. NOXON :

The combined Reaper and Mower manufactured by Messrs. R. & R. S. Patterson, of Belleville, which I purchased of you last July, did its work both in Grass and Grain entirely to my satisfaction.

I never saw grain and grass lodged worse than that in which I used the Machine, and contrary to my expectations, did its work complete. I have cut lodged grain with it, for my neighbors, who were unable to cut the grain with their own Machines, which are of a different kind. The Machine is in every way well adapted to the wants of the Farmer. It is light of draft, easy changed from a Mower to a Reaper, and *vice versa*. Convenient to move from field to field, or from one farm to another, is simple and strongly constructed, and not liable to get out of repair; is easily adjusted by means of a lever, to cut higher or lower as readily while the Machine is in motion as when it is not, which admirably fits it for cutting grain lodged in spots, or cutting over stones, or low stumps, without having to stop the team. The wheel under the tongue, and using the Reel in mowing as well as reaping, are advantages it has over all other Machines I have ever seen. The Machine has *not cost me a cent for*

repairs, and is now in good running order. The grain is easily put off the Machine, and in good shape for binding. I do not hesitate in saying that it the best Machine now before the public.

Yours respectfully, . WILLIAM DODGE.

Mansion House, Vaudreuil, C. E., Sept. 6th, 1857.

MY DEAR SIRs :

It gives me much pleasure to inform you that your Reaping and Mowing Machine, after a full trial, exceeds our expectations. I consider it the best I have seen. The wheel in front takes the weight off the horses necks, and with the one at the end, under the raker's seat, makes the Machine both easy to turn, and work well every way. The Cutter is not apt to choke in the fingers or guards, as in my old one of the McCornack pattern; indeed I feel that all farmers owe much to the inventor of the improvements in your Machine. My son is also very well pleased with the working of his machine; and I hear that Mr. A'Herns machine had of you, works to his satisfaction.

Your obd't servant, R. M. HARWOOD.

FULTON, Oswego Co., N. Y., Sept. 15th, 1857.

R. & R. S. PATTERSON :

Gentlemen,—I can inform you with much satisfaction that the combined Machine I ordered of you this season, works to my entire satisfaction. There are several of the Manney machine's with Wood's improvements in this neighborhood, and the Machine I have is fully equal and in some respects superior, as it cuts a wider swath, and having the wheel under the tongue, is an improvement not to be overlooked.

Very respectfully yours &c., GEO. H. MORRISON.

AMELIASBURG, Sept. 14th, 1857.

MESSRS. R. & R. S. PATTERSON :

The combined Reaping and Mowing Machine I purchased of you in 1856, is all that I could desire. It works well in either grass or grain; is substantially made—not liable to get out of repair, and easy of draft.

Having sold several of your Machines the past season through this section of country, it gives me pleasure to inform you that all of them have given the best satisfaction; some of them were purchased by farmers who had other Machines which they laid by, finding it to their advantage to purchase your Machine, rather than use the kind they had.

Yours truly, WILLIAM HENDERSON.

To Me
Gen
forward
has not
machin
chine o
work.
work p
equal t

Messrs
The
in fact
grain w
have no
it is eas
sented i
—that
this is a
is suitab
sider th
brother
I am su

Messrs.
Gent
you, I l
in certif
thing th

Messrs.
DEAR
ing Ma
answers

BAYFIELD, 3rd Sept'r, 1857.

To Messrs. R. & R. S. PATTERSON :

Gents.—I received the combined Reaping and Mowing machine you forwarded me in due time, and I am well pleased with it. This season has not been favorable for the successful working of reaping and mowing machines—grass and grain having been much lodged. But your Machine cuts, and gathers clean, where I had no idea any machine would work. Where the grain was too much tangled to be cradled, it did the work perfectly clean. There are no Machines in this section of country equal to those you manufacture.

Your most obed't,

HENRY STONEHOUSE.

ANCASTER, August 6th, 1857.

MESSRS. PATTERSON,

The combined Machine which I bought from you this season does well, in fact far better than I had any idea it would. I can cut any quantity of grain without binding, and it is not the least in the way. The horses have not to draw so hard as if ploughing. It cuts the grain clean, and it is easy to learn to lay it off well. In fact it is everything you represented it to be. I have heard a great deal said about combined Machines—that they would not work well, &c., &c.; but I am happy to find that this is all moonshine. I would recommend all Farmers where their land is suitable, to have a combined Reaping and Mowing Machine, for I consider them a great saving of money and trouble. Should any of my brother farmers not believe me, try one of Patterson's for yourselves, and I am sure you will not regret it.

JAMES WILSON.

INKERMAN FARM, near Belleville, C. W., August, 24th, 1857.

Messrs. R. & R. S. PATTERSON :

Gentlemen,—The combined Reaper and Mower I lately purchased of you, I have had fully tested in both capacities, and have much pleasure in certifying that the Machine for excellence and ease of execution, is everything the Agriculturalist can desire.

I remain, Gentlemen, your obed't serv't,

A. PONTON.

BATH, August 25th, 1857.

Messrs. R. & R. S. PATTERSON :

DEAR SIR,—In answer as to the capabilities of the Mowing and Reaping Machine I purchased of you this season, I can assure you that it answers entirely my expectations.

Yours truly,

PETER DAVY.

HILLIER, 23rd July, 1857.

Messrs. R. & R. S. PATTERSON :

Gentlemen,—The combined Reaping and Mowing Machine I ordered of you, I have tried in mowing, and it works well. Although the ground was quite uneven, no man could have mowed it better with a scythe. I have no fear but that it will work equally as well in cutting grain, as it does in the grass. Enclosed you will find amount in payment for Machine, which you will please acknowledge.

Your obedient servant,
JOSEPH PIERSON.

SIDNEY, Sept. 21st, 1857.

Messrs. R. & R. S. PATTERSON :

Gentlemen,—Agreeable to your request, I will briefly state to you my opinion with reference to the combined Reaper and Mower I purchased from you. I have now used it two years, and must say, after having given it a severe trial in all kinds of grass and grain, that I am well pleased with it. I can now cut and secure my grass and grain in better season, with my ordinary farm help, and easier than I formerly could with from three to five extra men. I cut some thirty acres of lodged clover the present year to my entire satisfaction. The addition of the third wheel which you attached to my machine this year, I consider a very great improvement, and I would not be induced to use a machine without it. Last season I cut thirty acres of clover seed with it, and I pronounce it a perfect clover harvester. In short, I would recommend your machine in preference to any other that I am acquainted with.

Respectfully yours,
JOHN S. HUFFMAN.

PITTSBURGH, C. W., Sept. 19, 1867.

Messrs. R. & R. R. PATTERSON :

Gentlemen,—In communicating to you my opinion of the combined Reaper and Mower I purchased of you the last season, I would say, that I consider it the *best* Machine in use at the present day. It does the work *neat* and *quick*, is not apt to get out of repair, in fact it has *far exceeded my expectations*,—as regards draught compared with plowing, I think it is lighter. My team are middling sized horses, and they manage it *perfectly easy*.

I take pleasure in recommending your Machine, as I think it justly deserves praise, and would recommend your combined Reaper and Mower to all interested.

I remain yours &c.,
ALEX. COWAN, Jr.

My De
I ha
which
er, from
confide
as such
ided in
ed to t

Messrs.

Messrs.

Gent
purchas
sity tha
machin
over al
portabi
and wit
mon da
farmers

We
and the

Messrs.

Gent
ing and
in recor
mowing
chine, c
than it
chine in

Messrs.

Gent
purchas
Bellevil
has man

July, 1857.

I ordered of
the ground
a scythe. I
grain, as it
ment for Ma-

PIERSON.

21st, 1857.

to you my
I purchased
having given
I am pleased with
season, with
th from three
r the present
wheel which
great improve-
out it. Last
unce it a per-
r machine in

HUFFMAN.

t. 19, 1867.

the combined
ould say, that
does the work
s far exceeded
wing, I think
they manage it

nk it justly de-
r and Mower

DWAN, JR.

DICKINSON'S LANDING, Sept. 18, 1857.

MY DEAR'S SIR :

I have much pleasure in writing respecting your Reaper and Mower, which has quite realised my expectations,—I have not tested it as a Mower, from my not having it early enough in the season, but have every confidence in it, as some of my neighbors speak very approvingly of them as such. The draft for horses I consider very easy, the third wheel a decided improvement, and indeed, consider the machine particularly adapted to this locality, and trust that you will meet with many sales.

Yours very respectfully,
Messrs. R. & R. S. PATTERSON, Belleville.

NICHOLAS EAMAN.

HILLIER, Sept. 21, 1857.

MESSRS. PATTERSON :

Gentlemen,—The combined Reaping and Mowing Machine that we purchased from you more than surpasses our expectations. We must say that we can do more work, and do it better, with your combined machine than any other we have used or seen used, and we prefer yours over all others for its lightness of draft, smoothness of cut, durability and portability, as it can be moved from field to field as easily as an ox-cart, and without any extra width of bars or gates. We find ten acres a common day's work with one team. We would recommend it to our brother farmers as the best combined machine in use.

We have cut all our grass and grain for the last three seasons with ours, and the whole expense of repairs has not exceeded two dollars.

Yours respectfully,

ANDREW HAIGHT,
JAMES HAIGHT.

SMITH'S FALLS, C. W., Sept. 5, 1857.

MESSRS. R. & R. S. PATTERSON, Belleville, C. W.

Gentlemen,—Having purchased and used one of your combined Reaping and Mowing Machines during the last harvest, I have great pleasure in recommending the same to the notice of farmers. I consider that for mowing it is in every sense of the term, a *Labor and Time saving* Machine, doing the work on almost any kind of land, better and cheaper than it can be done in any other way. I also believe it a superior Machine in all respects, to any other I have seen in use.

Truly yours,

HUGH FLOOK.

NORWICH, Sept. 7, 1857.

MESSRS. J. & S. NOXON :

Gentlemen,—The Patterson Premium combined Reaper and Mower I purchased of you last August, made by Messrs. R. & R. S. Patterson, Belleville, is the most perfect machine for harvesting I have ever seen ; it has many advantages over others, is simple of construction, can be changed

from a Mower to a Reaper by one man in a minute, does its work easy, is entirely free from side draft, cuts lodged grain admirably, and is not harder on horses than ordinary ploughing; in fact I would rather use my horses on the machine than before the plough.

The wheel that relieves the horses' necks from all weight of the Machine is a valuable improvement, and I would not for any consideration exchange for a machine without one. If I had not more than 30 acres of grass to cut I think it would pay me to buy a machine to do it, and I would not now take \$200 for my machine, if I could not get another of the same kind. Its adaption to both reaping and mowing, lightness of draft, and the ease with which it is changed from a Reaper to a Mower, and the trifling expenses of keeping the machine in repair, are considerations which should commend it to the public as the best machine in use.

Very respectfully yours &c.,

MATHIAS SNYDER.

BLOONFIELD, Aug. 24, 1857.

Messrs. R. & R. S. PATTERSON :

We the undersigned having each purchased one of your combined Reaping and Mowing Machines, within the last two seasons, and after testing them thoroughly, feel it no more than just to state that they have met our most sanguine expectations, both in mowing and reaping. We are satisfied that your machines are the *best* that have been introduced into this section of the country, and believe the farmer will but consult his own interests by purchasing this machine in preference to any other yet introduced. Our reason for recommending your Machine is simply because we believe them better adapted to the wants of the farmer than any other which we are acquainted with.

The Machine works well both as a Mower and Reaper, is substantially made of good materials, and not liable to get out of repair.

We can cut with one span of horses an acre per hour of grass or grain with ease.

Truly yours,

JOHN SAYLOR,

JOSIAH COOPER,

JOHN P. WILLIAMS, Jr.,

ROBERT H. SAYLOR.

HILLIER, Prince Edward County, Sept. 5th, 1857.

Messrs. R. & R. S. PATTERSON :

Gentlemen,—I purchased one of your combined Reaping and Mowing Machines three years since, and after cutting my entire crops with it for that length of time, my Machine is nearly as good as when he first purchased it, and I have not expended one dollar for repairs.

Its easy draft, together with the easy mode of adjusting to any required height, by means of a lever, are items of great consideration. The ease with which it is converted from a Mower to a Reaper, and *vice versa*, are

also im
grass it
cleaner
rakes.
give sat

Messrs.
The
pleased
in using
to have

Messrs.
Gent
Mr. W
vest, I
expecta
with a
that fro
other M
last sea
use it.
all resp

Messrs
Dea
chine
purch
it will
I an
clean
The li
all w
Mowe
tages
ed to

ts work easy, is
and is not hard-
rather use my
ht of the Ma-
consideration
than 30 acres
to do it, and I
get another of
g, lightness of
r to a Mower.
are considera-
achine in use.

also important advantages it has over all others I have seen. In cutting grass it cannot be excelled, and in grain it works equally well; we make cleaner work than when we used cradles, and the binders followed with rakes. The Machine is well made, of good materials, and cannot fail to give satisfaction when fairly used.

Yours respectfully,

DAVIS DORLAND.

PERTH, C. W.

Messrs. PATTERSON :

The Reaping and Mowing Machine I had of you last August, I am well pleased with. It is a first rate article, and I take great pleasure, not only in using it, but in recommending it to all interested in farming who wish to have their grass and grain cut with neatness and despatch.

JAMES ARMSTRONG.

SNYDER.

g. 24, 1857.

HILLER, Sept. 4, 1857.

Messrs. R. & R. S. PATTERSON,

Gentlemen,—The combined Reaper and Mower I bought of your agent, Mr. Wm. Henderson, this season, although not coming to hand until harvest, I gave it a fair trial in grain, and must say that it equaled my expectations. It cuts perfectly clean either in light or heavy grain, and with a moderate motion of the horses. As for mowing, I feel confident that from what I have seen and heard, it is equal, if not superior to any other Machine now in use. I used one of Palmer's self raking machines last season, and would not now take the gift of one and be compelled to use it. I can with confidence recommend your Machines as the best in all respects to the general wants of the farmers in Canada.

Yours respectfully,

CORNELIUS CLAPP.

s substantially

grass or grain
LOR,

OPER,
ILLIAMS, Jr.,
SAYLOR.

5th, 1857.

NORWICH, Sept. 8, 1857.

Messrs. J. & S. NOXON :

Dear Sirs,—Patterson's Premium combined Reaping and Mowing Machine I purchased of you this season, works to my entire satisfaction: I purchased too late for cutting my grass, but I have not the slightest doubt it will do its work well as a Mower.

I am satisfied that we saved considerable grain by using it, and made cleaner work than could possibly have been done by hand with the cradle. The lightness of its draft, the wheel which relieves the horses' necks from all weight of the Machine, the ease with which it is converted from a Mower to a Reaper, and convenience of operation, are important advantages it has over other machines, and in all respects are admirably adapted to the farming public.

Yours truly,

ROBERT CHAMBERS.

and Mowing
os with it for
he first pur-

o any required
u. The ease
vice versa, are

HILLIER, Aug. 5, 1856.

Messrs. R. & R. S. PATTERSON :

Sirs,—After thoroughly testing the combined Reaper and Mower I purchased of you last season, I am prepared to state that my most sanguine expectations were more than realized; I am satisfied that your machines are the best I have seen in this section of the country, and I think all farmers will find it greatly to their advantage in purchasing machines of your manufacture, as they will find them of the latest improvements, substantially made, easy of draft, and not liable to get out of order. I can cut with one span of horses, an acre of grass or grain per hour with ease. I have cut clover with my machine this season that was very badly lodged, and I must say that it performed admirably, doing the work as well or better than I could have expected, in short, I believe your Machine to be just the article that should be in the hands of every farmer who is desirous of having a good one. Should I have occasion to purchase another machine, you may be assured it will be from your establishment.

Respectfully yours, &c.,

JAMES YOUNG.

Bathurst, Sept. 6th, 1857.

Messrs. R. & R. S. PATTERSON :

Gentlemen,—I purchased one of your combined Reaping and Mowing Machines last July, and gave it a fair trial. I have great pleasure in stating that it worked to my satisfaction, both for reaping and mowing.

J. F. CLARK.

East Williamsburgh, 21st Sept., 1857.

Messrs. PATTERSON :

Gentlemen,—With respect to the advantages your combined Reaping and Mowing Machine possesses, we feel it due to yourselves as well as the public at large to give our views. After an experience of two years, we can unhesitatingly recommend it as superior to any other of its kind ever introduced into this part of the Province. As a Mower and Reaper it saves a vast deal of physical labor, cutting with all ease from 10 to 12 acres per day, and not as laborious for horses as ordinary ploughing. We therefore feel a pride in stating to you that we regard it as a grand labor-saving machine, with respect both to lightness of draft, expense of repairs, and durability. You are at perfect liberty to use our names as persons who have had perfect satisfaction to speak honestly concerning it, trusting it may be of service to your laudable enterprise.

Yours truly,

JOHN & MICHAEL HICKEY.

Amherst Island, Sept. 16th, 1857.

Messrs. R. & R. S. PATTERSON, Belleville :

Gentlemen,—The Reaping and Mowing Machine which I purchased

from you last Fall, has proved itself a valuable labor saving implement, doing its work in the most expeditious and satisfactory manner, considering the season, which has been most unfavorable for field machine operations in this part of the country; and I feel perfectly satisfied of the great practical benefit which the introduction of this kind of machinery will confer upon the Agriculturists of Canada. I would recommend your Mowing and Reaping Machines to Farmers in general, which I believe to be the best in point of construction, materials and workmanship, of any got up in the province.

D. H. PRESTON.

Amhurst Island, Sept. 16th, 1857.

Messrs. R. & R. S. PATTERSON :

Gentlemen,—I take pleasure in informing you of my satisfaction as to the working of the combined Reaper and Mower purchased from you this present season. I have tried it thoroughly in heavy grass, and in heavy standing and lodged grain—in both of which it performed its work fully better than either the scythe or cradle, notwithstanding the unfavorableness of the present season.

HUGH PATTERSON.

Amberst Island, Sept. 16th, 1857.

R. & R. S. PATTERSON Esq's, Belleville :

Gentlemen,—The combined Reaping and Mowing Machine which I purchased from you in July 1856, far exceeds my expectations. I have thoroughly tested it in the harvests of '56 and '57, and I feel authorized in saying from practical experience that it works remarkably well both in grass and grain, and is made of good materials, and in the best manner.

WILLIAM HOWARD.

Dickinson's Landing, 21st Sept., 1857.

Messrs. PATTERSON, Belleville :

Gentlemen,—In reply to your inquiry as to "my opinion with reference to your Combined Reapers," I am happy to say that I consider it an article worthy of patronage. I have finished my haying and harvesting, and the machine performed better than I had any right to expect upon rough land, while upon smooth bottom its work could not be surpassed by the scythe or cradle. Your improved machine I would highly recommend to Farmers, particularly those who hire their labour, as they will find it a great saving of time and expense, and on the whole I consider your Combined Reaper and Mower without an equal in the present age.

Yours respectfully,

JAMES MARTIN.

Osnabruck, Sept. 21st, 1857.

Messrs. R. & R. S. PATTERSON :

Dear Sirs,—As I have just finished harvesting I thought to write you a few lines respecting a Reaper and Mower I purchased from your Agent, Mr. Derby, in July last. My land was not in order for a reaping machine, and I did not succeed as well upon the first trial as I had expected, and some of my neighbors discouraged me about keeping it, but the more I used it the better I was pleased, and I am so well satisfied with the Machine, in both grass and grain, that if I could not get another of the same kind, that I do not know what sum would induce me to part with it. I would advise those intending to purchase to buy of you, believing them to be the best of any that I am acquainted with.

Your respectfully,

W. H. BAKER.

LYNN, September 22nd, 1857.

Messrs. R. & R. S. PATTERSON :

Gentlemen,—I am in receipt of yours of the 17th inst., asking my opinion with reference to the Machine I purchased of you the present season, and in reply would say that I shall speak of what I know, and testify to what I have seen. It worked in standing grass like a charm, and as well if not better in lodged than any machine in this neighborhood. I have likewise cut my grain with my Machine, and to say it works well is not enough, for it is my opinion that it cannot be beat. From the first I was strongly impressed with the utility of a third wheel, and after having used it through the season, I must say that I consider it almost indispensable. It relieves the horses from the constant weight upon their necks, and at the same time carries the Machine steadier through dead furrows and over obstructions. Mr. Shipman, my neighbor, is greatly in favour of a third wheel; for my own part I could not be induced to do without it for three times the present extra charge. I would recommend your Machine to intending purchasers in preference to any other style of Machine with which I am acquainted, and in conclusion will say, that every man with one hundred acres of land under ordinary cultivation would find it a profitable investment.

I remain, yours truly,

B. COLEMAN.

GLENGARY, Sept. 23rd, 1857.

Messrs. R. & R. S. PATTERSON :

Dear Sirs,—The Reaper and Mower I purchased from you has worked beautifully, and given great satisfaction; although it was worked to great disadvantage, in consequence of the land not being prepared for it. Some of our hay ground was very rough and the furrows very deep, still I have put my Reaper away for the winter without having broken five shillings worth. I think it is lighter on horses than ploughing, and I find it to cut well, even with the horses going at a slow walk, if the knives were at all

in ord
ment,
assists
have n
Reaper

Messrs.
Gen
Mower
opport
hay an
pectati
third w
a vast
plough
consequ

To Mes
Gen
this ha
Reaper
ably w
As a M
sired, a
as to th

This
chines,
conside
superio
mon st

Messrs.
Gen
Reaper
fully at
acres o
acres p
the dra

st, 1857.

to write you
your Agent,
ng machine,
pected, and
the more I
th the Ma-
of the same
with it. I
ieving them

BAKER.

nd, 1857.

, asking my
present sea-
y, and testify
arm, and as
borhood. I
works well is
n the first I
after having
ost indispen-
their necks,
ead furrows
ly in favour
do without
mend your
style of Ma-
y, that every
vation would

OLEMAN.

3rd, 1857.

a has worked
ked to great
or it. Some
p, still I have
five shillings
find it to cut
s were at all

in order. The wheel under the pole I consider an important improve-
ment, as it relieves the horses necks from the weight of the machine, and
assists in turning and steadying it. Your machine has pleased me, and I
have much pleasure in recommending it to any one in want of a good
Reaper and Mower combined.

I remain yours truly,

NEIL J. MCGILLERY.

Messrs. R. & R. S. PATTERSON :

Lancaster, Sept. 21st, 1857.

Gentlemen,—Having purchased one of your Combined Reapers and
Mowers late in the summer of 1856, after my hay was finished, I had no
opportunity of testing it until this season, and now after cutting all my
hay and grain with it, I am happy to state that it has exceeded my ex-
pectations, doing excellent work, both as a Mower and a Reaper. The
third wheel, which relieves the weight from the horses necks, is evidently
a vast improvement. The draft I do not consider heavier than ordinary
ploughing, and is no objection in comparison to the substantial build and
consequent durability of the machine.

Yours respectfully,

D. A. McPIERSON.

To Messrs. PATTERSON :

Fergus, December 26th, 1857.

Gentlemen,—The grain in this quarter was so much twisted and lodged
this harvest, that I had a very poor opportunity of trying my machine as a
Reaper, however, I managed to cut several acres with it, and was remark-
ably well pleased with its performance, considering the state of the grain.
As a Mower, all who saw it work confessed that it left nothing to be de-
sired, and very far surpassed any thing of the kind in this quarter, both
as to the excellence of its work and the ease to the horses.

I remain gentlemen, yours truly,

F. CARSON ALLANDEE.

FORFAR, April 19th, 1858.

This is to certify that I have used one of "Manny's Combined Ma-
chines," manufactured by R. & R. S. Patterson, of Belleville, C. W., and
consider them the best I have ever used or seen used; doing their work
superior to any scythe or cradle, and for draft I consider it equal to com-
mon stiff ploughing, and can cheerfully recommend them to the public.

Yours respectfully,

JUSTUS K. DELONG.

Messrs. R. & R. S. PATTERSON :

FRAZERFIELD, Sept. 26th, 1857.

Gentlemen,—I have had the satisfaction of using your Combined
Reaper and Mower for two seasons, and am pleased to state that it has
fully answered my expectations: having cut with it this season ninety-six
acres of hay, also, several acres of grain. On an average it has cut seven
acres per day, in a manner quite satisfactorily. I would add in regard to
the draft, its being not heavier than that of the ordinary plough.

I am yours respectfully,

ARCHIBALD FRAZER.

REFERENCES.

The limits of a Circular preclude the possibility of publishing a tenth part of the recommendations in our possession. For any further information, we would respectfully refer to the following gentlemen, who constitute a portion of those who have purchased our combined Machines the past season :—

A. W. Mallory,.....Mallorytown.	Robert Forsyth,.....Collins' Bay.
George Esson,.....Otonabee.	Peter Lazier,.....Picton.
D. McDougall,.....Berlin.	Nathaniel Lazier,....do
J. & S. Noxon,.....Ingersoll.	George Brouse,.....Matilda.
N. H. Davis,.....Whitby.	F. S. Jones,.....Sidney.
G. M. Cossett & Broth', Smith's Falls.	Edward Black,.....Eramosa.
A. B. Saylor,.....Picton.	Daniel Black,.....do
Robert Luckey,.....Warsaw.	Hugh Arthur,.....Hillier.
T. C. Allandice,.....Fergus.	Peter Vandervoort,...Sidney.
W. H. Parker,.....Guelph.	Simeon Ashley Jr.,...Huntingdon
Thomas McKenzie,....Brucefield.	Thomas Sarles,.....Rawdon.
John P. Williams,....Bloomfield.	Simon Cole,.....Big Island.
Thomas Warring,....Picton.	D. McDougall,.....Cornwall.
Peter Fox,.....Northport.	Neil McGivin,.....do
J. Becket,.....Toronto.	W. H. Baker,.....Osnabruck.
J. J. Bowerman,.....Rednersville.	Gordon French,.....Moulinette.
John Ashley,.....Collins' Bay.	James Raymond,....do
Samuel Smith,.....do	B. F. Davy,.....Belleville.
Hugh Close,.....Napancee.	Edward Abbot,.....Long Island
W. H. Gardner,.....do	James Martin,.....Dickn's L.
J. J. Farley,.....Thurlow.	James A'Hern,.....Vaudr'il c.r.
Alex'r Dolson,.....Chatham.	Robert Harwood,....do
John Boyes,.....Amherst Isl'd.	John Cronkhite,....Bloomfield.
Hugh Patterson,.....do	Samuel Noxon,.....do
George Howard,.....do	Gideon H. Bowerman,.do
N. S. Demill,.....Northport.	Jacob Parliment,....Hillier.
W. O. Buell,.....Perth.	Johnson M. Young....do

Thom
Hugh
Sloan
Samu
Elias
Peter
Franc
John
Rober
Joseph
Henry
R. G.
Martin
Angus
James
Douga
Samue
Peter
Charle
Abrah
Willia
W. Co
Abram
Peter

Wit
two
shall b
some p
sold wi
from to
Price o
wheel

Thomas Bell.....	Hillier.	Barney Lane.....	Sidney.
Hugh Arthur.....	do	Peter Van Sickle.....	Ancaster.
Sloan Stapleton.....	do	Jacob Anders.....	do
Samuel T. Wilmot....	Sidney.	Henry Wartman.....	Kingston.
Elias Vandewaters...	do	Samuel Gilbert.....	Sidney.
Peter Bell.....	do	William Howard....	Amherst Is'd
Francis Taylor.....	do	John B. Way.....	Ameliasburg.
John Fretz.....	do	David Preston.....	Amherst Is'd
Robert G. Davis.....	Pieton.	Thomas Nelson.....	Fred'cksb'rg.
Joseph Spencer.....	do	R. A. Campbell.....	do
Henry Way.....	Ameliasburg.	P. W. Day.....	Kingston.
R. G. Vaughn.....	Kingston.	G. Merritt.....	do
Martin Parker.....	Port Hope.	C. S. Harris.....	Richmond.
Angus Finny.....	Lancaster.	W. Gibbard.....	do
James Dingwell.....	do	John Hickey.....	Williamsb'rg.
Dougall G. Ross.....	do	M. W. Hickey.....	do
Samuel Smith.....	Sophiasburg.	George McBean....	Lancaster.
Peter Tilman.....	Hamilton.	D. A. McPherson....	do
Charles Grass.....	Collins' Bay.	E. McBean.....	do
Abraham Lazier.....	Pieton.	R. McLaughlin....	do
William Howell.....	Ancaster.	Hugh Patterson....	Amherst Is'd.
W. Conkey.....	Stirling.	Archibald Fraser...	Charlotten'g.
Abram Hanes.....	Guelph.	John Flammigan....	do
Peter Chard.....	Stirling.	James Craig.....	do

With each Machine will be furnished two Seythes, two extra guards, two extra sections, one extra pinion and wrench. In order that there shall be no delay in obtaining extras, we intend to keep a full supply at some point in every Township where we sell Machines. Every Machine sold will be warranted to be made of good material, and capable of cutting from ten to fifteen acres of grass or grain per day, with one span of horses. Price of large sized Machine, with all the improvements—iron reach and wheel under the tongue, delivered at cars or boat in Belleville, \$140.

R. & R. S. PATTERSON.

ing a tenth
her informa-
who consti-
machines the

Collins' Bay.
Pieton.
do
Matilda.
Sidney.
Eramesa.
do
Hillier.
Sidney.
Huntingdon
Rawdon.
Big Island.
Cornwall.
do
Osnabruck.
Moulinette.
do
Belleville.
Long Island
Dickn's L.
Vaudr'il c.r.
do
Bloomfield.
do
an. do
Hillier.
do

PATTERSON
AGRICULTURAL WORKS,
AND
IRON FOUNDRY,

MAIN STREET, BELLEVILLE, C. W.

THE SUBSCRIBERS MANUFACTURE .

THRASHING MACHINES FROM ONE TO EIGHT HORSE POWER,
WITH OR WITHOUT SEPERATORS,

COMBINED REAPERS AND MOWERS,

Seed Drills, Cultivators, Clover Mills

FAN-MILLS, STRAW-CUTTERS, ROOT-SLICERS,

LITTLE GIANT CORN AND COB MILLS

Grain-Crushers, Corn-Shellers, Wood-Saws, Field-Rollers,

AND A GREAT VARIETY OF PLOWS

— ALSO, —

STEAM ENGINES, MILL GEARING

AND A GENERAL ASSORTMENT OF

COOK, PARLOR AND BOX STOVES,

AGRICULTURAL FURNACES WITH CALDRONS OF VARIOUS SIZE

.....
An inspection of Implements and Prices is respectfully solicited

