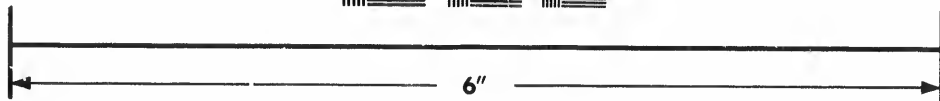
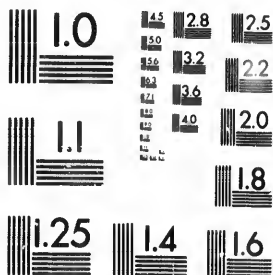
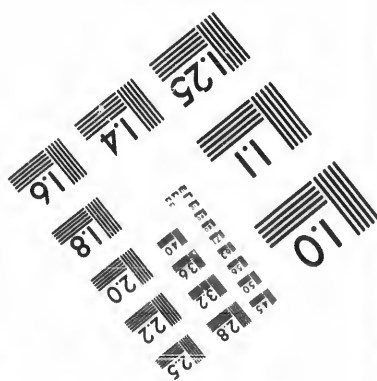


**IMAGE EVALUATION
TEST TARGET (MT-3)**



Photographic
Sciences
Corporation

23 WEST MAIN STREET
WEBSTER, N.Y. 14580
(716) 872-4503



14
16
18
20
22
25

**CIHM/ICMH
Microfiche
Series.**

**CIHM/ICMH
Collection de
microfiches.**



Canadian Institute for Historical Microreproductions / Institut canadien de microreproductions historiques

10

© 1986

Technical and Bibliographic Notes/Notes techniques et bibliographiques

The Institute has attempted to obtain the best original copy available for filming. Features of this copy which may be bibliographically unique, which may alter any of the images in the reproduction, or which may significantly change the usual method of filming, are checked below.

L'Institut a microfilmé le meilleur exemplaire qu'il lui a été possible de se procurer. Les détails de cet exemplaire qui sont peut-être uniques du point de vue bibliographique, qui peuvent modifier une image reproduite, ou qui peuvent exiger une modification dans la méthode normale de filmage sont indiqués ci-dessous.

Coloured covers/
Couverture de couleur

Coloured pages/
Pages de couleur

Covers damaged/
Couverture endommagée

Pages damaged/
Pages endommagées

Covers restored and/or laminated/
Couverture restaurée et/ou pelliculée

Pages restored and/or laminated/
Pages restaurées et/ou pelliculées

Cover title missing/
Le titre de couverture manque

Pages discoloured, stained or foxed/
Pages décolorées, tachetées ou piquées

Coloured maps/
Cartes géographiques en couleur

Pages detached/
Pages détachées

Coloured ink (i.e. other than blue or black)/
Encre de couleur (i.e. autre que bleue ou noire)

Showthrough/
Transparence

Coloured plates and/or illustrations/
Planches et/ou illustrations en couleur

Quality of print varies/
Qualité inégale de l'impression

Bound with other material/
Relié avec d'autres documents

Includes supplementary material/
Comprend du matériel supplémentaire

Tight binding may cause shadows or distortion along interior margin/
La reliure serrée peut causer de l'ombre ou de la distorsion le long de la marge intérieure

Only edition available/
Seule édition disponible

Blank leaves added during restoration may appear within the text. Whenever possible, these have been omitted from filming/
Il se peut que certaines pages blanches ajoutées lors d'une restauration apparaissent dans le texte, mais, lorsque cela était possible, ces pages n'ont pas été filmées.

Pages wholly or partially obscured by errata slips, tissues, etc., have been refilmed to ensure the best possible image/
Les pages totalement ou partiellement obscurcies par un feuillet d'errata, une pelure, etc., ont été filmées à nouveau de façon à obtenir la meilleure image possible.

Additional comments:/ [Printed ephemera] 1 sheet (verso blank)
Commentaires supplémentaires:

This item is filmed at the reduction ratio checked below/
Ce document est filmé au taux de réduction indiqué ci-dessous.

10X	12X	14X	16X	18X	20X	22X	24X	26X	28X	30X	32X
										/	

The cop
to the g

The ima
possibl
of the c
filming

Original
beginni
the last
sion, or
other o
first pa
sion, an
or illust

The last
shall co
TINUED
whiche

Maps, p
differen
entirely
beginni
right an
require
method

The copy filmed here has been reproduced thanks to the generosity of:

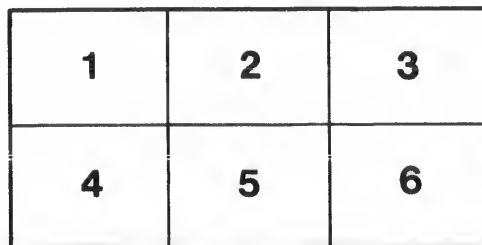
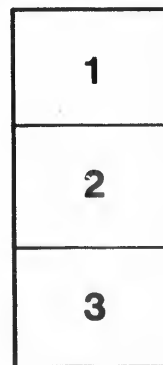
Douglas Library
Queen's University

The images appearing here are the best quality possible considering the condition and legibility of the original copy and in keeping with the filming contract specifications.

Original copies in printed paper covers are filmed beginning with the front cover and ending on the last page with a printed or illustrated impression, or the back cover when appropriate. All other original copies are filmed beginning on the first page with a printed or illustrated impression, and ending on the last page with a printed or illustrated impression.

The last recorded frame on each microfiche shall contain the symbol \rightarrow (meaning "CONTINUED"), or the symbol ∇ (meaning "END"), whichever applies.

Maps, plates, charts, etc., may be filmed at different reduction ratios. Those too large to be entirely included in one exposure are filmed beginning in the upper left hand corner, left to right and top to bottom, as many frames as required. The following diagrams illustrate the method:



L'exemplaire filmé fut reproduit grâce à la générosité de:

Douglas Library
Queen's University

Les images suivantes ont été reproduites avec le plus grand soin, compte tenu de la condition et de la netteté de l'exemplaire filmé, et en conformité avec les conditions du contrat de filmage.

Les exemplaires originaux dont la couverture en papier est imprimée sont filmés en commençant par le premier plat et en terminant soit par la dernière page qui comporte une empreinte d'impression ou d'illustration, soit par le second plat, selon le cas. Tous les autres exemplaires originaux sont filmés en commençant par la première page qui comporte une empreinte d'impression ou d'illustration et en terminant par la dernière page qui comporte une telle empreinte.

Un des symboles suivants apparaîtra sur la dernière image de chaque microfiche, selon le cas: le symbole \rightarrow signifie "A SUIVRE", le symbole ∇ signifie "FIN".

Les cartes, planches, tableaux, etc., peuvent être filmés à des taux de réduction différents. Lorsque le document est trop grand pour être reproduit en un seul cliché, il est filmé à partir de l'angle supérieur gauche, de gauche à droite, et de haut en bas, en prenant le nombre d'images nécessaire. Les diagrammes suivants illustrent la méthode.

LIST OF VOTERS - 1894.

Polling District No. 8, part of the Township of AUGUSTA, in the Electoral District of the SOUTH RIDING OF GRENVILLE.

LIST OF POST OFFICES, WITH THEIR REFERENCE NUMBERS.

1 Algoaquin, 3 North Augusta, 5 Charleville, 7 Missalippi, 9 Glenmore;
4 Brockville, 6 Kingston, 8 Prescott, 10 Maitland.

POLLING DISTRICT No. 8

Comprising all those portions of the 5th and 6th Concessions of Augusta lying between the western limit of the said township and the eastern side line of lot No. 19 in each of the said Concessions.

Explanation of abbreviations in the column "Qualification": — O, owner; T, tenant; F. S., farmer's son; S. O., son of owner; I., income; Oc., occupant.

No.	Name in Full. (Surname first.)	P. O. Address.	Occupation.	Qualification.	Description of Property or Residence.	No.	Name in Full. (Surname first.)	P. O. Address.	Occupation.	Qualification.	Description of Property or Residence.
1	Azoe, Charles	1	Farmer	O	21 Coa 6	87	Leaux, Calvius	1	Farmer	T	Pt 32 Con 5
2	Alberry, George	1	"	O	Pt 22	88	Leleuvre, Ezra	1	"	O	Pt 27 6
3	Azoe, George	9	"	O	Pt 23	89	Lasley, Grant	1	"	T	Pt. 28 6
4	Alberry, Alexander	1	"	T	Pt 34 5	90	Leleuvre, Simon	1	"	FS	Pt 33 6
5	Alberry, Thomas	1	"	T	Pt 34 5	91	Lenox, Vincent	9	"	T	Pt 23 6
6	Hain, William	1	"	T	Pt 29 5	92	Langley, James	1	"	T	Pt 28 6
7	Boyd, Albert	1	"	O	Pt 33 5	93	Landoa, Daniel	3	"	T	Pt 30 31 5
8	Bradford, Richard	1	"	O	36 5	94	Larry, Charles	1	"	O	Pt 34 6
9	Bradford, Hiram	1	"	SO	26 5	95	Lefevre, William A.	1	"	O	Pt 33 6
10	Bradford, Edward S.	1	"	SO	36 5	96	Meehan, Thomas	1	"	O	Pt 29 22 5
11	Bishop, William J.	1	"	O	23 5	97	Meehan, William	4	"	O	Pt 38 5
12	Bishop, Uriah A.	1	"	T	23 5	98	McLean, Philander	1	"	O	Pt 31 5
13	Bishop, William	1	"	O	19 5	99	McKenley, John	1	"	O	Pt 37 5
14	Bishop, Uriah	1	"	O	27 6	100	McKenley, William	1	"	T	Pt 37 5
15	Bolton, Sidney	3	"	O	24 6	101	McNish, George	1	Blacksmith	O	Pt 29 & lot 21 5
16	Bissell, Charles H.	1	Merchant	O	Pt 12 29 10 6	102	McKenley, Joseph	1	Farmer	O	Pt 35 6
17	Bissell, M. H.	1	Farmer	O	Pt 34 35 36 5 4	103	McFadden, Robert	1	"	O	Pt 23 6
18	Bissell, James	1	"	O	Pt 34 35 36 5 4	104	Minisn, Nathaniel	3	"	T	Pt 26 6
19	Bissell, William J.	1	"	O	Pt 34 35 36 5 4	105	McLean, William	1	"	O	Pt 31 33 34 5 6
20	Bishop, Ralph	1	"	FS	Pt 26 27 4 6	106	McLean, John N.	1	Carpenter	O	Pt 29 v 1 23 5
21	Brennan, Daniel	1	"	O	Pt 24 6	107	Myrks, Manuel	9	Farmer	O	Pt 20 21 25 5 6
22	Bishop, William B.	9	"	FS	Pt 19 5	108	Mosby, David	9	"	O	Pt 27 28 5
23	Carpenter, Milton	1	"	FS	Pt 36 5	109	Moshier, James	9	"	O	Pt 19 c com 5
24	Carpenter, Hiram	1	"	O	36 5	110	McGwin, Henry	9	"	O	Pt 19 20 24 6
25	Cole, Lander	1	"	O	32 33 4 5	111	Millatout, John	1	Agent	Pt	19 c c 6
26	Connell, Samuel	1	"	O	22 3	112	McLean, John	10	Farmer	O	Pt 24 6
27	Carpenter, D. W.	3	"	O	Pt 29 33 6 8	113	McCarthy, Andrew	2	"	O	Pt 26 6
28	Crippin, William	1	Farmer	FS	Pt 24 5	114	McFadden, Robert	1	Laborer	O	Pt 29 5
29	Connell, William S.	1	"	FS	Pt 19 22 5	115	McNish, Terrence	1	"	T	Pt 29 5
30	Crippin, Elisha	1	"	O	Pt 25 29 5 4	116	Mehan, John	1	Farmer	T	Pt 38 5
31	Connell, James	1	"	O	Pt 20 21 25 5	117	Meuish, William J. sr.	3	"	O	Pt 26 6
32	Coville, Stephen	9	"	O	Pt 28 6	118	Meuish, William, jr.	3	"	O	Pt 26 6
33	Coville, David	1	"	O	Pt 26 6	119	Mortimer, Edmond	3	"	O	Pt 31 6
34	Cable, Robert	9	"	O	Pt 25 26 6	120	Montgomery, Samuel	3	"	O	Pt 29 6
35	Coville, George	9	"	O	Pt 25 26 6	121	Montgomery, William J.	3	"	FS	Pt 29 6
36	Carpenter, Henry	1	"	FS	Pt 36 5	122	McKinley, George, jr.	1	"	FS	Pt 27 5
37	Cook, Isaac G.	9	"	O	Pt 24 6	123	Newall, William	1	"	O	Pt 26 5
38	Cooper, David sr.	1	"	O	Pt 37 6	124	Noblett, Daniel	1	"	O	Pt 82 5 5
39	Coville, Ezra	9	"	O	Pt 21 5	125	Place, Joseph	1	"	O	Pt 30 5
40	Coville, James	9	"	O	Pt 21 5	126	Place, Thomas D.	1	"	O	Pt 32 6
41	Crane, James	3	"	T	Pt 27 28 6	127	Porter, James	3	"	O	Pt 25 5
42	Coats, James	8	"	O	Pt 30 31 6	128	Place, William	9	"	O	Pt 29 23 5
43	Dabs, Ezra	8	Farmer	O	Pt 30 31 6	129	Place, George	9	"	O	Pt 23 5
44	Dixon, Henry	3	"	O	Pt 22 25 27 6 7	130	Place, William W.	1	"	FS	Pt 32 5
45	Dales, William	3	"	O	Pt 36 37 6 7	131	Place, Wright	5	"	O	Pt 28 5
46	Dustan, James	9	"	FS	Pt 24 26 6	132	Place, Wm.	1	"	T	Pt 38 5
47	Dale, Ormsby	3	"	FS	Pt 36 37 6 7	133	Place, Percy F.	1	"	FS	Pt 32 6
48	Dales, Thomas O.	3	"	O	Pt 36 37 6 7	134	Redmond, William	1	"	O	Pt 38 6
49	Dixon, William	1	Carriage-maker	I		135	Rose, James	1	"	O	Pt 29 6
50	Dalglish, Christopher	10	Farmer	O	Pt 26 6	136	Redmond, William A.	1	"	FS	Pt 38 6
51	Dalglish, Thomas	10	"	FS	Pt 26 6	137	Scott, John	3	"	O	Pt 34 6
52	Earl, Nelson	1	"	O	29 5	138	Spry, Thomas	1	"	T	Pt 28 5
53	Earl, Alonzo	1	"	O	Pt 28 5	139	Stewart, Thomas	1	"	T	Pt 35 5
54	Earl, Manly	1	"	T	Pt 23 25 5	140	Stewart, David	1	"	T	Pt 35 5
55	Earl, Morley F.	1	"	FS	Pt 29 5	141	Spicer, Addison	1	"	O	Pt 36 6
56	Easter, Henry	1	"	O	Pt 28 5	142	Throop, Amos, C.	1	"	FS	Pt 29 30 31 5
57	Fox, Thomas	9	"	T	Pt 21 5	143	Tanny, John	9	"	O	Pt 20 6
58	Farley, Wm.	9	"	T	Pt 25 6	144	Throop, James H.	1	"	O	Pt 29 30 31 5
59	Falkner, Libeus	3	"	O	Pt 22 33 34 6	145	Toppin, Thomas	1	"	O	Pt 34 5
60	Farley, Charles	9	"	O	Pt 25 6	146	Troop, Joseph A.	1	"	O	Pt 29 30 5
61	Grice, Robert G.	9	"	T	Pt 19 c Com 5	147	Throop, George	1	"	O	Pt 31 5
62	Goodison, Robert	3	"	T	Pt 31 6	148	Throop, William	1	"	FS	Pt 29 30 5
63	Goodison, Luke	3	"	O	Pt 31 6	149	Tanny, Solomon	1	"	O	Pt 36 5
64	Goodison, Robert	3	"	O	Pt 33 34 5	150	Throop, Marshall F.	1	"	O	Pt 29 30 5
65	Gaulaway, William	1	Farmer	T	Pt 25 26 5	151	Toppin, Joseph	1	Farmer	FS	Pt 34 5
66	Galway, Edmund	1	"	O	29 5	152	Thompson, Henry	1	"	I	
67	Grice, William	10	"	T	Pt 28 5	153	Vout, Robert	3	"	O	Pt 23 6
68	Haley, Alfred	10	"	O	Pt 24 6	154	Vout, John	3	"	O	Pt 25 26 6
69	Haley, George	10	"	FS	Pt 24 6	155	Vout, James	3	"	O	Pt 25 6
70	Hornbrook, William	1	"	O	Pt 25 26 5	156	Wright, Isaiah	1	"	O	Pt 29 27 4 5
71	Halfpenny, Samuel	9	"	O	Pt 21 6	157	Walker, John	1	"	O	Pt 33 5
72	Haley, Alexander	10	"	O	Pt 24 6	158	Wright, Chelson	1	Farmer	O	Pt 33 5
73	Haley, William	10	"	O	Pt 24 6	159	Wright, James	1	"	O	Pt 29 5
74	Irvine, Andrew	1	"	O	Pt 25 26 4 5	160	Wright, Frederick K.	1	"	FS	Pt 27 29 5 4
75	Kirkby, James	1	"	O	35 5	161	Walker, Samuel	1	"	Oc	Pt 32 5
76	Kyle, Robert	3	"	O	Pt 28 lot 30 6 9	162	Wyle, John, sr.	9	"	T	Pt 21 6
77	Kirkby, Henry B.	1	"	O	Pt 35 5	163	Walker, James	1	Mason	O	Pt 29 30 32 4 5
78	Kirkby, Wilson	1	"	Oc	35 5	164	Walker, Robert	1	"	O	Pt 29 32 4 5
79	Koya, George	3	"	O	33 6	165	Ward, Robert	1	Farmer	O	Pt 23 24 25 5
80	Kirkby, Joseph W.	1	"	O	Pt 35 5	166	Walker, Philander	2	"	O	Pt 38 5
81	Kirkby, Fred	9	"	O	Pt 19 5	167	Walker, Pellesier	3	"	FS	Pt 38 6
82	Lennox, John	9	"	O	Pt 28 5	168	Wylie, William	1	Laborer	I	
83	Langley, George	1	"	O	Pt 28 6	169	Wond, Robert	9	Farmer	O	Pt 19 2) 6
84	Landon, Andrew	3	"	FS	Pt 35 6	170	Wylie, William	1	"	T	Pt 21 5
85	Landon, James	3	"	O	35 6	171	Wallace, Joseph	1	"	O	Pt 23 6
86	Larry, Albert	1	"	O	Pt 34 6	172	Wood, Thomas	9	"	Oc	Pt 20 21 6

I, _____ the undersigned

do hereby certify that the foregoing list, consisting of _____ page, and containing _____ names, is a true copy of the List of Voters for Polling District Number _____ in the Electoral District of _____ as finally revised for the year 1894, under "The Electoral Franchise Act."

Dated at _____

