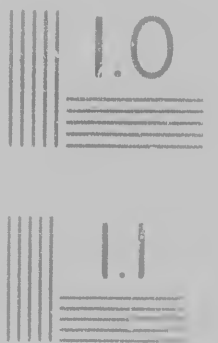
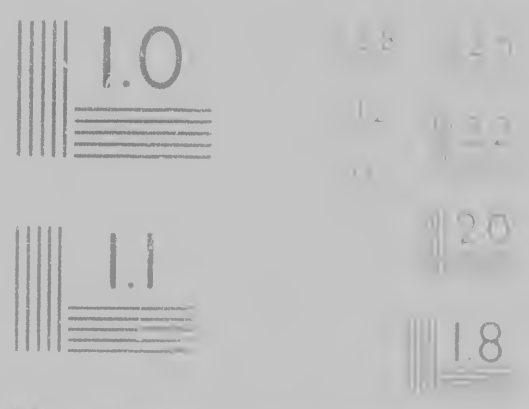
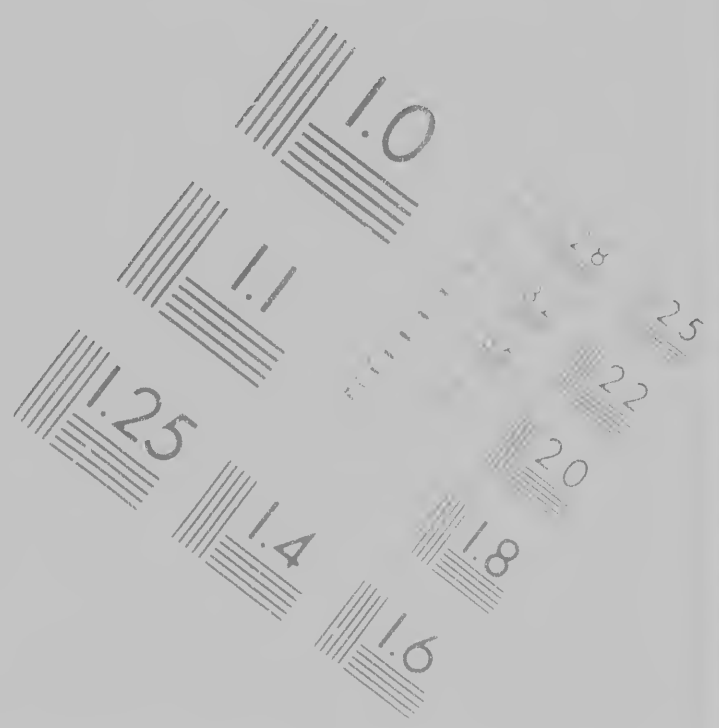


IMAGE EVALUATION
TEST TARGET



**MAGE EVALUATION
TEST TARGET (MT-3)**



**CIHM/ICMH
Microfiche
Series.**

**CIHM/ICMH
Collection de
microfiches.**

H
le

Technical and Bibliographic Notes/ Notes techniques

The Institute has attempted to obtain the best original copy available for filming. Features of this copy which may be bibliographically unique, which may alter any of the images in the reproduction, or which may significantly change the usual method of filming, are checked below

- | | | |
|--------------------------|---|--------------------------|
| <input type="checkbox"/> | Coloured covers/
Couverture de couleur | <input type="checkbox"/> |
| <input type="checkbox"/> | Covers damaged/
Couverture endommagée | <input type="checkbox"/> |
| <input type="checkbox"/> | Covers restored and/or laminated/
Couverture restaurée et/ou pelliculée | <input type="checkbox"/> |
| <input type="checkbox"/> | Cover title missing/
Le titre de couverture manque | <input type="checkbox"/> |
| <input type="checkbox"/> | Coloured maps/
Cartes géographiques en couleur | <input type="checkbox"/> |
| <input type="checkbox"/> | Coloured ink (i.e. other than blue or black)/
Encre de couleur (i.e. autre que bleue ou noire) | <input type="checkbox"/> |
| <input type="checkbox"/> | Coloured plates and/or illustrations/
Planches et/ou illustrations en couleur | <input type="checkbox"/> |
| <input type="checkbox"/> | Bound with other material/ | <input type="checkbox"/> |

L'I
qu
de
po
un
me
so

Notes/ Notes techniques et bibliographiques

L'Institut a microfilmé le meilleur exemplaire qu'il lui a été possible de se procurer. Les détails de cet exemplaire qui sont peut-être uniques du point de vue bibliographique, qui peuvent modifier une image reproduite, ou qui peuvent exiger une modification dans la méthode normale de filmage sont indiqués ci-dessous.

- Coloured pages/
Pages de couleur
- Pages damaged/
Pages endommagées
- Pages restored and/or laminated/
Pages restaurées et/ou pelliculées
- Pages discoloured, stained or foxed/
Pages décolorées, tachetées ou piquées
- Pages detached/
Pages détachées
- Showthrough/
Transparence
- Quality of print varies/
Qualité inégale de l'impression
- Includes supplementary material

The copy filmed here
to the generosity of:

Library
Photo

The images appearing
possible considering
of the original copy and
filming contract specifications

Original copies in print
beginning with the first
the last page with a
sion, or the back cover
other original copies
first page with a print
sion, and ending on
or illustrated impressions

Maps, plates, charts
different reduction ratios
entirely included in

copy filmed here has been reproduced thanks to the generosity of:

Library of Congress
Photoduplication Service

Images appearing here are the best quality obtainable considering the condition and legibility of the original copy and in keeping with the filming contract specifications.

Original copies in printed paper covers are filmed beginning with the front cover and ending on the last page with a printed or illustrated impression, or the back cover when appropriate. All other original copies are filmed beginning on the first page with a printed or illustrated impression, and ending on the last page with a printed or illustrated impression.

Maps, plates, charts, etc., may be filmed at different reduction ratios. Those too large to be fully included in one exposure are filmed

L'exemplaire filmé fut reproduit grâce à la générosité de:

Library of Congress
Photoduplication Service

Les images suivantes ont été reproduites avec le plus grand soin, compte tenu de la condition et de la netteté de l'exemplaire filmé, et en conformité avec les conditions du contrat de filmage.

Les exemplaires originaux dont la couverture en papier est imprimée sont filmés en commençant par le premier plat et en terminant soit par la dernière page qui comporte une empreinte d'impression ou d'illustration, soit par le second plat, selon le cas. Tous les autres exemplaires originaux sont filmés en commençant par la première page qui comporte une empreinte d'impression ou d'illustration et en terminant par la dernière page qui comporte une telle empreinte.

Les cartes, planches, tableaux, etc., peuvent être filmés à des taux de réduction différents. Lorsque le document est trop grand pour être

grâce à la

ess
Service

produites avec le
de la condition et
né, et en
du contrat de

la couverture en
en commençant
ant soit par la
empreinte
oit par le second
s exemplaires
nçant par la
e empreinte
en terminant par
ne telle

etc , peuvent être
différents.
rand pour être



By t

An ORDINANCE

W

have the sole a
fairs with the
right of any st
to ordain
the passing of
The southern,
of the Unit
which shall co
ward of Hud
mical transac
debit, and t
put by the tr
be appointed
and is forer
which he shal
cars. The f
Congress shall
for the northe
fishery

By the UNITED STATES in
CONGRESS assembled.

AUGUST 7, 1786.

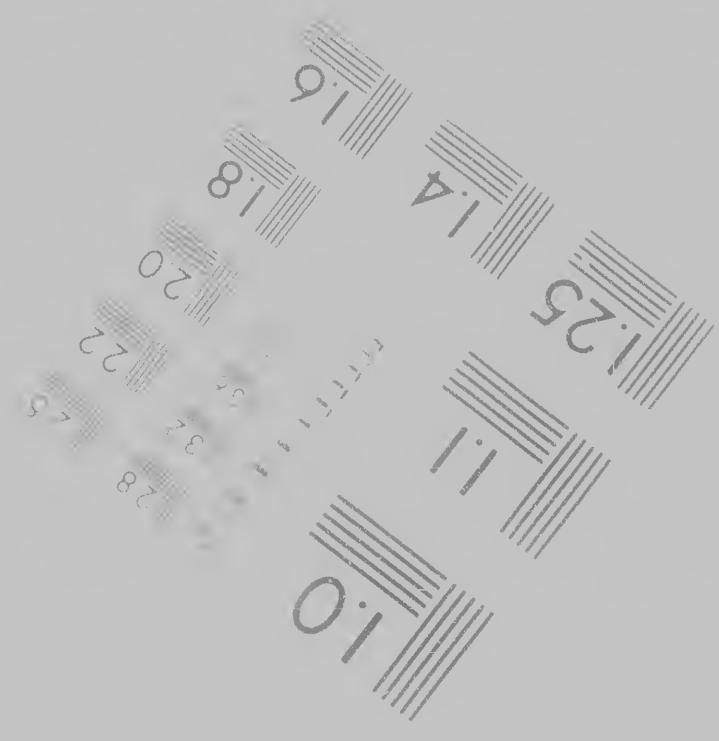
AN ORDINANCE for the Regulation of INDIAN AFFAIRS.

WH E R E A S the safety and tranquillity of the frontiers of the United States, do in some measure depend on the maintaining a good correspondence between their citizens and the several nations of Indians in amity with them: And whereas the United States in Congress assembled, under the ninth of the articles of confederation and perpetual union, have the sole and exclusive right and power of regulating the trade, and managing all affairs with the Indians not members of any of the states; provided that the legislative right of any state within its own limits be not infringed or violated.

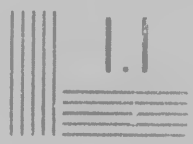
Be it ordained by the United States in Congress assembled, That from and after the passing of this ordinance, the Indian department be divided into two districts, viz. *the southern*, which shall comprehend within its limits, all the nations in the territory of the United States, who reside southward of the river Ohio; and *the northern*, which shall comprehend all the other Indian nations within the said territory, and westward of Hudson river: Provided that all councils, treaties, communications and official transactions, between the superintendant hereafter mentioned for the northern district, and the Indian nations, be held, transacted and done, at the outpost occupied by the troops of the United States, in the said district. That a superintendant be appointed for each of the said districts, who shall continue in office for two years, unless sooner removed by Congress, and shall reside within or as near the district for which he shall be so appointed, as may be convenient for the management of its concerns. The said superintendants, shall attend to the execution of such regulations, as Congress shall from time to time establish respecting Indian affairs. The superintendant for the northern district, shall have authority to appoint two deputies, to reside at



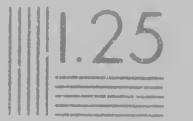
9



Photographic
Sciences
Corporation

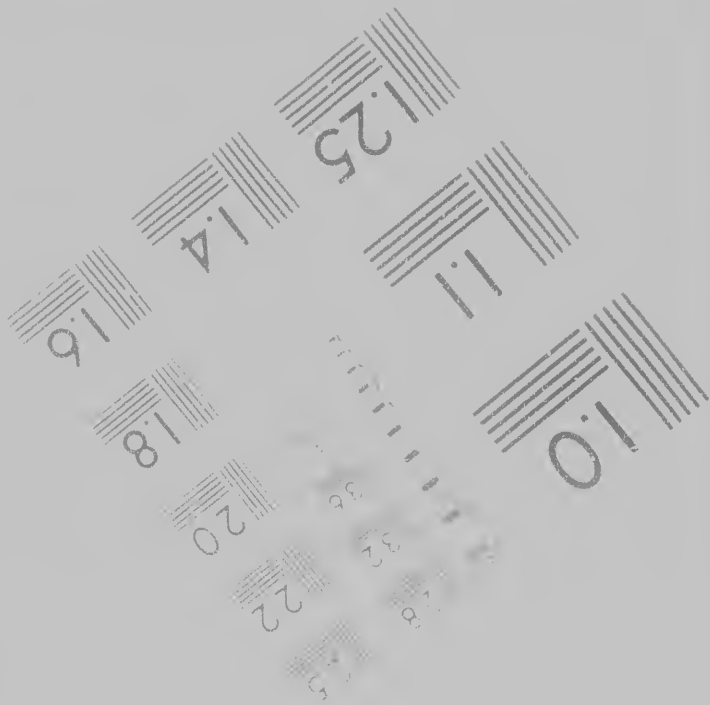


20



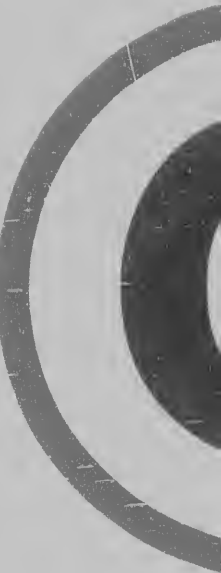
6"

Canadian Insti



Photographic
Sciences
Corporation

23 WEST MAIN STREET
WEBSTER, N.Y. 14580
716 872-4503





Canadian Institute for Historical Microreproductions / Institut canadien de microreproductions historiques

© 1986

ctions historiques

6

Coloured plates and/or illustrations/
Planches et/ou illustrations en couleur

Bound with other material/
Relié avec d'autres documents

Tight binding may cause shadows or distortion
along interior margin/
La reliure serrée peut causer de l'ombre ou de la
distorsion le long de la marge intérieure

Blank leaves added during restoration may
appear within the text. Whenever possible, these
have been omitted from filming/
Il se peut que certaines pages blanches ajoutées
lors d'une restauration apparaissent dans le texte
mais, lorsque cela était possible, ces pages n'ont
pas été filmées.

Additional comments / CIHM no. 60367
Commentaires supplémentaires

This item is filmed at the reduction ratio checked below.
Ce document est filmé au taux de réduction indiqué ci-dessous

10X		14X		18X		22X
12X		16X		20X		

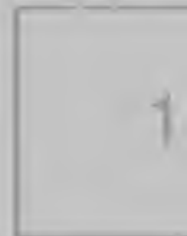
Quality of print varies.
Qualité inégale de l'impression

Includes supplementary material.
Comprend du matériel supplémentaire

Only edition available/
Seule édition disponible

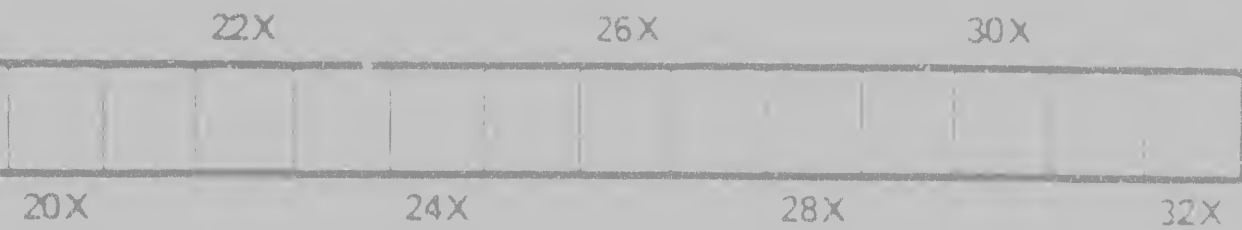
Pages wholly or partially obscured by errata
slips, tissues, etc., have been refilmed to
ensure the best possible image.
Les pages totalement ou partiellement
obscurcies par un feuillet d'errata, une pelure
etc. ont été filmées à nouveau de façon à
obtenir la meilleure image possible

Maps, plates, charts,
different reduction ratios
entirely included in order
beginning in the upper
right and top to bottom
required. The following
method.



60367

and below/
ci-dessous



s, plates, charts, etc., may be filmed at
rent reduction ratios. Those too large to be
ely included in one exposure are filmed
nning in the upper left hand corner, left to
and top to bottom, as many frames as
ired. The following diagrams illustrate the
hod:

Les cartes, planches, tableaux, etc., peuvent être
filmés à des taux de réduction différents.
Lorsque le document est trop grand pour être
reproduit en un seul cliché, il est filmé à partir
de l'angle supérieur gauche, de gauche à droite,
et de haut en bas, en prenant le nombre
d'images nécessaire. Les diagrammes suivants
illustrent la méthode



etc., peuvent être
différents,
and pour être
filmé à partir
gauche à droite,
nombre
mmes suivants.



