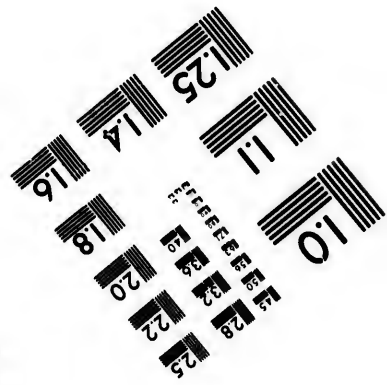
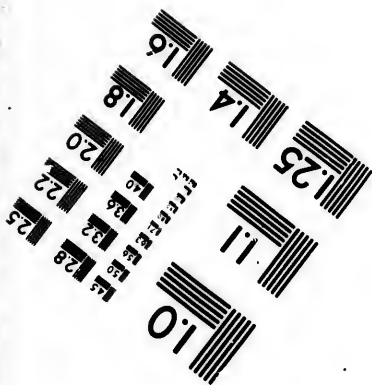
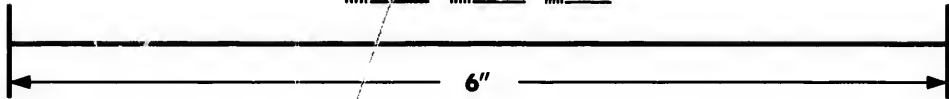
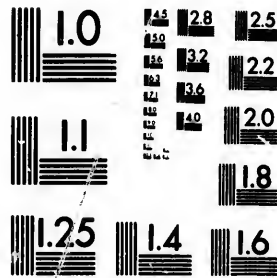


**IMAGE EVALUATION
TEST TARGET (MT-3)**



**Photographic
Sciences
Corporation**

23 WEST MAIN STREET
WEBSTER, N.Y. 14580
(716) 872-4503

28 25
22
0

**CIHM/ICMH
Microfiche
Series.**

**CIHM/ICMH
Collection de
microfiches.**



Canadian Institute for Historical Microreproductions / Institut canadien de microreproductions historiques


© 1986

Technical and Bibliographic Notes/Notes techniques et bibliographiques

The Institute has attempted to obtain the best original copy available for filming. Features of this copy which may be bibliographically unique, which may alter any of the images in the reproduction, or which may significantly change the usual method of filming, are checked below.

L'Institut a microfilmé le meilleur exemplaire qu'il lui a été possible de se procurer. Les détails de cet exemplaire qui sont peut-être uniques du point de vue bibliographique, qui peuvent modifier une image reproduite, ou qui peuvent exiger une modification dans la méthode normale de filmage sont indiqués ci-dessous.

- | | |
|--|--|
| <input type="checkbox"/> Coloured covers/
Couverture de couleur | <input type="checkbox"/> Coloured pages/
Pages de couleur |
| <input type="checkbox"/> Covers damaged/
Couverture endommagée | <input type="checkbox"/> Pages damaged/
Pages endommagées |
| <input type="checkbox"/> Covers restored and/or laminated/
Couverture restaurée et/ou pelliculée | <input type="checkbox"/> Pages restored and/or laminated/
Pages restaurées et/ou pelliculées |
| <input type="checkbox"/> Cover title missing/
Le titre de couverture manque | <input checked="" type="checkbox"/> Pages discoloured, stained or foxed/
Pages décolorées, tachetées ou piquées |
| <input type="checkbox"/> Coloured maps/
Cartes géographiques en couleur | <input type="checkbox"/> Pages detached/
Pages détachées |
| <input type="checkbox"/> Coloured ink (i.e. other than blue or black)/
Encre de couleur (i.e. autre que bleue ou noire) | <input checked="" type="checkbox"/> Showthrough/
Transparence |
| <input type="checkbox"/> Coloured plates and/or illustrations/
Planches et/ou illustrations en couleur | <input type="checkbox"/> Quality of print varies/
Qualité inégale de l'impression |
| <input type="checkbox"/> Bound with other material/
Relié avec d'autres documents | <input type="checkbox"/> Includes supplementary material/
Comprend du matériel supplémentaire |
| <input type="checkbox"/> Tight binding may cause shadows or distortion
along interior margin/
La reliure serrée peut causer de l'ombre ou de la
distortion le long de la marge intérieure | <input type="checkbox"/> Only edition available/
Seule édition disponible |
| <input type="checkbox"/> Blank leaves added during restoration may
appear within the text. Whenever possible, these
have been omitted from filming/
Il se peut que certaines pages blanches ajoutées
lors d'une restauration apparaissent dans le texte,
mais, lorsque cela était possible, ces pages n'ont
pas été filmées. | <input type="checkbox"/> Pages wholly or partially obscured by errata
slips, tissues, etc., have been refilmed to
ensure the best possible image/
Les pages totalement ou partiellement
obscurcies par un feuillet d'errata, une pelure,
etc., ont été filmées à nouveau de façon à
obtenir la meilleure image possible. |
| <input type="checkbox"/> Additional comments:/
Commentaires supplémentaires: | |

This item is filmed at the reduction ratio checked below/
Ce document est filmé au taux de réduction indiqué ci-dessous.

10X	14X	18X	22X	26X	30X
<input type="checkbox"/>	<input type="checkbox"/>	<input type="checkbox"/>	<input checked="" type="checkbox"/>	<input type="checkbox"/>	<input type="checkbox"/>
12X	16X	20X	24X	28X	32X

The copy filmed here has been reproduced thanks to the generosity of:

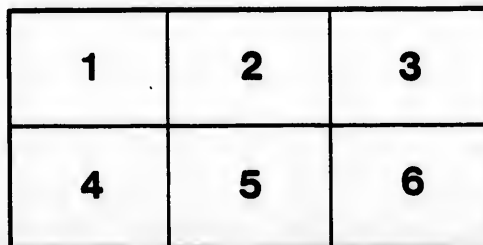
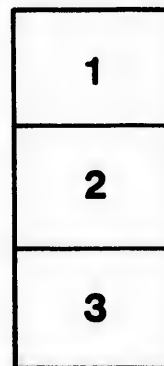
Medical Library
McGill University
Montreal

The images appearing here are the best quality possible considering the condition and legibility of the original copy and in keeping with the filming contract specifications.

Original copies in printed paper covers are filmed beginning with the front cover and ending on the last page with a printed or illustrated impression, or the back cover when appropriate. All other original copies are filmed beginning on the first page with a printed or illustrated impression, and ending on the last page with a printed or illustrated impression.

The last recorded frame on each microfiche shall contain the symbol \rightarrow (meaning "CONTINUED"), or the symbol ∇ (meaning "END"), whichever applies.

Maps, plates, charts, etc., may be filmed at different reduction ratios. Those too large to be entirely included in one exposure are filmed beginning in the upper left hand corner, left to right and top to bottom, as many frames as required. The following diagrams illustrate the method:



L'exemplaire filmé fut reproduit grâce à la générosité de:

Medical Library
McGill University
Montreal

Les images suivantes ont été reproduites avec le plus grand soin, compte tenu de la condition et de la netteté de l'exemplaire filmé, et en conformité avec les conditions du contrat de filmage.

Les exemplaires originaux dont la couverture en papier est imprimée sont filmés en commençant par le premier plat et en terminant soit par la dernière page qui comporte une empreinte d'impression ou d'illustration, soit par le second plat, selon le cas. Tous les autres exemplaires originaux sont filmés en commençant par la première page qui comporte une empreinte d'impression ou d'illustration et en terminant par la dernière page qui comporte une telle empreinte.

Un des symboles suivants apparaîtra sur la dernière image de chaque microfiche, selon le cas: le symbole \rightarrow signifie "A SUIVRE", le symbole ∇ signifie "FIN".

Les cartes, planches, tableaux, etc., peuvent être filmés à des taux de réduction différents. Lorsque le document est trop grand pour être reproduit en un seul cliché, il est filmé à partir de l'angle supérieur gauche, de gauche à droite, et de haut en bas, en prenant le nombre d'images nécessaire. Les diagrammes suivants illustrent la méthode.

Tu

Lafleur, H A.

Reprinted from the Montreal Medical Journal. April, 1899.

**TUBERCULAR MENINGITIS.—LUMBAR PUNCTURE.
TUBERCLE BACILLI IN THE FLUID REMOVED.—PUNCTURE FLUID
INOCULATED INTO GUINEA-PIG PRODUCING GENERAL
MILIARY TUBERCULOSIS.**

BY

H. A. LAFLEUR, B.A., M.D.

Assistant Professor of Medicine and Associate Professor of Clinical Medicine, McGill University; Physician to the Montreal General Hospital.

E. B., female, 10 years of age, entered the Montreal General Hospital on May 28th, 1898. She had been out of sorts for three weeks, and though by nature a bright vivacious child had since that date become listless and lost her usual appetite. There had been at first some numbness of the fingers and lips, and in a day or two vomiting and headache. About the fifth day of her indisposition she had a series of general convulsions, recurring during two days and two nights. The bowels were obstinately constipated and moved only by purgatives. Her parents said that after the convulsions she had been delirious for a week, and had then become quite drowsy, had cried out occasionally during her sleep and had become very thin. There was no history of tuberculosis in the family.

Note made on admission:—

Very much emaciated; lies upon her side with the legs drawn up; there is marked retraction of the head, the abdomen is scaphoid, and the *tache cérébrales* is easily produced. The lids are half closed, the right pupil is dilated, but there is no strabismus. The child is stuporose, takes no notice of its surroundings and cries peevishly when roused to take nourishment. She mutters a good deal but there is no cry. There is retention of urine. Pulse, 108; Respirations, 28; Temperature, 100° F. The lymphatic glands are not enlarged. There is no evidence of tuberculous disease of the bones or joints.

Respiratory system:—The lungs are clear on percussion and auscultation.

Circulatory system:—The cardiac dulness is within the natural limits and there are no murmurs. The pulse is rapid and small and shows considerable irregularity in rhythm.

Digestive system:—The tongue is moist and coated. Beyond the re-

tracted condition of the abdomen, there is nothing specially noteworthy in the abdomen. The spleen and the mesenteric glands are not palpable.

May, 30th :—The temperature ranges from 98.4° F. to 101° F., the pulse is 140, the respirations 32. Both pupils are widely dilated. No gross changes in the fundi. Lumbar puncture was performed about 1 p. m., and 20 cc. of an almost perfectly clear straw-yellow fluid were obtained. The whole of the fluid removed by puncture was injected subcutaneously into a guinea-pig. The child appeared to be quieter after the puncture. At 5 p. m., she became suddenly cyanosed and remained so for an hour.

May 31st :—A second puncture was made this afternoon between the third and fourth lumbar vertebræ, and 10 cc. of a similar fluid were obtained. This was centrifugated and the sediment was examined microscopically. There were no pus cells found, but a few blood corpuscles and a number of cells resembling lymphocytes, i. e., with large, round, deeply-staining nuclei and very little protoplasm. Cover-slip preparations were made, stained with carbol-fuchsin and decolourized with Gabbet's blue. In three slides five typical tubercle bacilli were found. One hour after the puncture the child became cyanosed, but this passed off as before.

June 1st :—The patient is quite unconscious. Death occurred at 5.15 p. m. An autopsy could not be obtained.

The guinea-pig, into which the cerebrospinal fluid from the first puncture had been injected on May 30th, began to get thin and to show signs of weakness two weeks after the inoculation. It was killed on June 30th, and the post mortem showed an acute miliary tuberculosis. Tubercle bacilli were found in all the organs.

