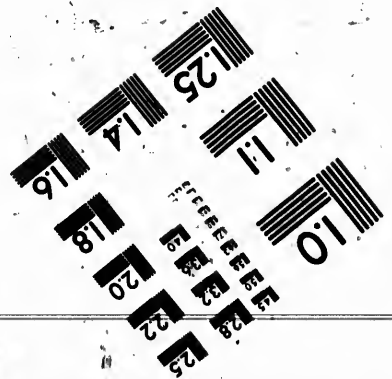
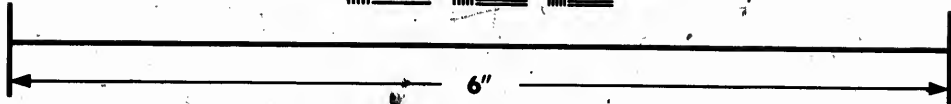
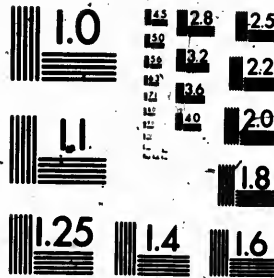


**IMAGE EVALUATION
TEST TARGET (MT-3)**



**Photographic
Sciences
Corporation**

23 WEST MAIN STREET
WEBSTER, N.Y. 14580
(716) 872-4503

1.8
2.0
2.2
2.5
2.8
3.2
3.6
4.0

**CIHM
Microfiche
Series
(Monographs)**

**ICMH
Collection de
microfiches
(monographies)**



Canadian Institute for Historical Microreproductions / Institut canadien de microreproductions historiques

1.0
1.2
1.4
1.6

© 1991

Technical and Bibliographic Notes / Notes techniques et bibliographiques

The Institute has attempted to obtain the best original copy available for filming. Features of this copy which may be bibliographically unique, which may alter any of the images in the reproduction, or which may significantly change the usual method of filming, are checked below.

L'Institut a microfilmé le meilleur exemplaire qu'il lui a été possible de se procurer. Les détails de cet exemplaire qui sont peut-être uniques du point de vue bibliographique, qui peuvent modifier une image reproduite, ou qui peuvent exiger une modification dans la méthode normale de filmage sont indiqués ci-dessous.

- Coloured covers/
Couverture de couleur
- Covers damaged/
Couverture endommagée
- Covers restored and/or laminated/
Couverture restaurée et/ou pelliculée
- Cover title missing/
Le titre de couverture manque
- Coloured maps/
Cartes géographiques en couleur
- Coloured ink (i.e. other than blue or black)/
Encre de couleur (i.e. autre que bleue ou noire)
- Coloured plates and/or illustrations/
Planches et/ou illustrations en couleur
- Bound with other material/
Relié avec d'autres documents
- Tight binding may cause shadows or distortion along interior margin/
La reliure serrée peut causer de l'ombre ou de la distorsion le long de la marge intérieure
- Blank leaves added during restoration may appear within the text. Whenever possible, these have been omitted from filming/
Il se peut que certaines pages blanches ajoutées lors d'une restauration apparaissent dans le texte, mais, lorsque cela était possible, ces pages n'ont pas été filmées.
- Additional comments:/
Commentaires supplémentaires:

- Coloured pages/
Pages de couleur
- Pages damaged/
Pages endommagées
- Pages restored and/or laminated/
Pages restaurées et/ou pelliculées
- Pages discoloured, stained or foxed/
Pages décolorées, tachetées ou piquées
- Pages detached/
Pages détachées
- Showthrough/
Transparence
- Quality of print varies/
Qualité inégale de l'impression
- Continuous pagination/
Pagination continue
- Includes index(es)/
Comprend un (des) index
- Title on header taken from:/
Le titre de l'en-tête provient:
- Title page of issue/
Page de titre de la livraison
- Caption of issue/
Titre de départ de la livraison
- Masthead/
Générique (périodiques) de la livraison

This item is filmed at the reduction rate checked below/
Ce document est filmé au taux de réduction indiqué ci-dessous.

10X	14X	18X	22X	26X	30X
<input type="checkbox"/>	<input type="checkbox"/>	<input type="checkbox"/>	<input type="checkbox"/>	<input type="checkbox"/>	<input type="checkbox"/>
12X	16X	20X	24X	28X	32X

The copy filmed here has been reproduced thanks to the generosity of:

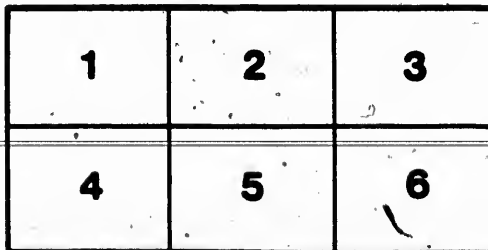
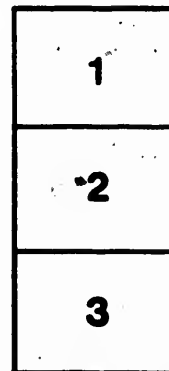
Library of the National Archives of Canada

The images appearing here are the best quality possible considering the condition and legibility of the original copy and in keeping with the filming contract specifications.

Original copies in printed paper covers are filmed beginning with the front cover and ending on the last page with a printed or illustrated impression, or the back cover when appropriate. All other original copies are filmed beginning on the first page with a printed or illustrated impression, and ending on the last page with a printed or illustrated impression.

The last recorded frame on each microfiche shall contain the symbol \rightarrow (meaning "CONTINUED"), or the symbol ∇ (meaning "END"), whichever applies.

Maps, plates, charts, etc., may be filmed at different reduction ratios. Those too large to be entirely included in one exposure are filmed beginning in the upper left hand corner, left to right and top to bottom, as many frames as required. The following diagrams illustrate the method:



L'exemplaire filmé fut reproduit grâce à la générosité de:

La bibliothèque des Archives nationales du Canada

Les images suivantes ont été reproduites avec le plus grand soin, compte tenu de la condition et de la netteté de l'exemplaire filmé, et en conformité avec les conditions du contrat de filmage.

Les exemplaires originaux dont la couverture en papier est imprimée sont filmés en commençant par le premier plat et en terminant soit par la dernière page qui comporte une empreinte d'impression ou d'illustration, soit par le second plat, selon le cas. Tous les autres exemplaires originaux sont filmés en commençant par la première page qui comporte une empreinte d'impression ou d'illustration et en terminant par la dernière page qui comporte une telle empreinte.

Un des symboles suivants apparaîtra sur la dernière image de chaque microfiche, selon le cas: le symbole \rightarrow signifie "A SUIVRE", le symbole ∇ signifie "FIN".

Les cartes, planches, tableaux, etc., peuvent être filmés à des taux de réduction différents. Lorsque le document est trop grand pour être reproduit en un seul cliché, il est filmé à partir de l'angle supérieur gauche, de gauche à droite, et de haut en bas, en prenant le nombre d'images nécessaire. Les diagrammes suivants illustrent la méthode.

1882.

PERROD LIST

OF

1882.

CANT, GOURLAY & Co.,

"GALT MACHINE WORKS,"

GALT, ONTARIO, CANADA.

MANUFACTURING OF

WOOD-WORKING MACHINERY

A SPECIALTY.

Detailed Catalogues, with speed and other particulars, furnished on application.

TERMS OF SALE— $\frac{1}{4}$ Cash; balance in 3 and 6 Months, with Lien. Discount for Cash.

PRICES SUBJECT TO CHANGE WITHOUT NOTICE. BOXING EXTRA.

Machinery delivered on board at the Great Western, Grand Trunk or Credit Valley Railways.

PLANING AND MATCHING MACHINES.—(Continued.)

	Counter Shaft for Ditto, - - - - -	\$ 36 00
	Poney Planer, 24 in. wide, 5 in. thick, - - - - -	160 00
	Poney Planer, 20 in. wide, 5 in. thick, - - - - -	140 00
1300 00	Poney Planer, 16 in. wide, 5 in. thick, - - - - -	120 00
	Panel and Veneer Planer, 16 in. wide, - - - - -	140 00
1000 00	Panel and Veneer Planer, 20 in. wide, - - - - -	155 00
	Panel and Veneer Planer, 24 in. wide; - - - - -	175 00
900 00	Dimension Planer, with Woodworth cylinder and	
1100 00	travelling carriage, to plane 12 ft. long, 24 in. wide	500 00
	Dimension Planer, to plane 12 ft. long, 26 in. wide,	570 00
700 00	For every extra foot in length, - - - - -	10 00
	No. 1, Daniels' Planer, to plane 18 in. wide, 8 ft. long,	275 00
900 00	For every extra foot in length, - - - - -	8 00
	No. 2, Daniels' Planer, to plane 24 in. wide, 10 ft. long.	355 00
	For every extra foot in length, - - - - -	10 00
1200 00	Jointer or Buzz Planer, 10 in., with counter shaft,	90 00
	Jointer or Buzz Planer, 16 in., with counter shaft,	110 00
900 00	Jointer or Buzz Planer, 24 in., with counter shaft,	160 00

MOULDING MACHINES.

600 00	No. 0, four-sided, planes 10 in. wide, table drops 7 in.	\$550 00
800 00	No. 0, four-sided, with extra 12 in. head and cutters,	
	and matcher heads and cutter to match to	
550 00	10 in. wide, - - - - -	600 00
600 00	No. 0, three-sided, - - - - -	475 00
400 00	No. 0, three-sided, with extra 12 in. head, and	
	matcher heads and cutters, - - - - -	525 00
450 00	No. 1, three-sided, planes 8 in. wide, table drops 7	
300 00	in., 1 set brass slotted heads, with plain cutters,	385 00
445 00	No. 1, four-sided, planes 8 in. wide, 1 set brass slotted	
	heads, with plain cutters, - - - - -	440 00
485 00	No. 2, one-sided, planes 7 in. wide, table drops 14 in.,	
	brass slotted head, with 1 set plain cutters, - - - - -	175 00
570 00	No. 2, three-sided, planes 7 in. wide, brass slotted	
	heads, and 1 set of plain cutters, - - - - -	250 00
725 00	No. 2, four-sided, planes 7 in. wide, brass slotted	
	heads, and 1 set of plain cutters, - - - - -	300 00
760 00	No. 3, one-sided, planes 6 in. wide, table drops 14 in.,	
	brass slotted head, 1 set of plain cutters, - - - - -	145 00
285 00	No. 3, three-sided, planes 6 in. wide, brass slotted	
	heads, and plain cutters, - - - - -	225 00
320 00	No. 3, four-sided, planes 6 in. wide, brass slotted	
	heads, and 1 set of plain cutters, - - - - -	245 00
	Rope Moulding attachment, - - - - -	85 00

SHAPING MACHINES.

No. 1 Shaping Machine—Upright, - - -	\$160 00
No. 2 Shaping Machine— Do. - - -	110 00
Carving, Panelling, Edge & Surface Moulding Mach'g. -	200 00
Frizer, with Counter Shaft, - - -	110 00
Ironwork for Shaper—for wood frame, - - -	45 00
Counter Shaft for Ditto, - - -	20 00

BLIND MACHINES.

The Ellis Blind Slat Tenoning Machine, - - -	\$ 80 00
Blind Slat Tenoning Machine, improved, - - -	90 00
Blind Slat Boring and Morticing Machine, - - -	130 00
Blind Slat Wiring Machine—hand, - - -	15 00
Blind Slat Wiring Machine—foot, - - -	25 00

MITREING, MORTICING AND BORING MACHINES.

Mitreing Machine—hand, - - -	\$ 15 00
Mitreing Machine—foot, - - -	25 00
Mitreing Machine—for picture frames, - - -	35 00
No. 1 Morticing Machine—foot, - - -	45 00
No. 2 Morticing Machine—foot, - - -	25 00
No. 1 Morticing Machine—power, - - -	160 00
No. 1 Morticing Machine—with boring apparatus, - - -	190 00
Horizontal two Spindle Boring & Morticing Machine, - - -	145 00
Vertical Boring Machine, with three Spindles, - - -	175 00
Large Boring Machine, with adjustable Spindles to bore from top and bottom, - - -	250 00
Post Boring Machine, - - -	25 00

DOOR TENONING MACHINES.

No. 1 Tenoning Machine, with double heads and double cope, - - -	\$300 00
No. 1 Tenoning Machine, with double heads and single cope, - - -	275 00
No. 2 Tenoning Machine, with double cope, - - -	200 00
No. 2 Tenoning Machine, with single cope, - - -	185 00

BAND, SCROLL & SAWING MACHINES.

Scroll Saw, - - -	\$ 80 00
Scroll Saw—iron work for wood frame, - - -	25 00
Eureka Scroll Saw—iron or wood top, - - -	125 00
Rip-Saw Table, wood top, - - -	90 00
Rip Saw Table, iron top, - - -	115 00
Rip-Saw Table, iron top, with cutting off and mitre sawing attachment, - - -	130 00

BA

Comb
Gang R
Rip-Saw
Railwa
Carria
Improv
Swing
lev
No. 1
No. 2
Re-Saw
Re-Saw
Vertic
Vertic
Blind
Saw C
Saw A

Sand
Panel
Panel
Wood
Count
Wood
Count
Wood
Count
Impr
Ditto
Ditto
Ditto
Ditto
Ordin

No. 1
No. 1
No. 2
Eave
Eme
Coun
Eme
Coun

BAND, SCROLL & SAWING MACHINES.—(Continued.)

60 00	Combined Rip and Cross-Cut Saw Table, - - -	\$175 00
0 00	Gang Rip-Saw Table, with two saws & delivery rolls, -	195 00
00 00	Rip-Saw Table for one saw, with delivery rollers, -	225 00
00 00	Railway Cut-off Saw Table, - - -	115 00
15 00	Carriage Cut-off Saw Table, - - -	125 00
20 00	Improved Swing Cut-off Saw—iron frame, - - -	70 00
	Swing Cut-off Saw, iron work—Counter Shaft, Pul-	
	leys, Hangers and Arbor, - - -	35 00
80 00	No. 1 Band Sawing Machine, 34 in. wheel, - - -	200 00
90 00	No. 2 Band Sawing Machine, 34 in. wheel, - - -	165 00
30 00	Re-Sawing Machine, 36 in., - - -	280 00
15 00	Re-Sawing Machine, 42 in., - - -	355 00
25 00	Vertical Re-Sawing Machine, - - -	360 00
	Vertical and Circular Re-Sawing Machine, combined	500 00
	Blind Slat Re-Sawing Machine, three saws, - - -	130 00
	Saw Guide, - - -	14 00
	Saw Arbors, with adjustable cone bushing, (5 sizes)	
	- No. 1, \$10; No. 2, \$12; No. 3, \$14; No. 4,	
	\$16; No. 5, \$18.	

SUNDRY MACHINES.

	Sand Papering Machine, - - -	\$ 45 00
	Panel Raising Machine, double heads, - - -	85 00
	Panel Raising Head, Arbor and Guide, - - -	33 00
	Wood-Turning Lathe, 20 in. swing, - - -	42 00
	Counter Shaft for Lathe, - - -	14 00
	Wood-Turning Lathe, 16 in. swing, - - -	38 00
250 00	Counter Shaft for Ditto, - - -	14 00
25 00	Wood-Turning Lathe, 10 in. swing, - - -	30 00
	Counter Shaft for Ditto, - - -	12 00
	Improved Gauge Lathe, 10 ft. bed, with smoothing	
	knife attachment, - - -	312 00
	Ditto, without smoothing knife attachment, - - -	260 00
300 00	Ditto, 8 ft. bed, with smoothing knife attachment, -	300 00
	Ditto, 8 ft. bed, without smoothing knife attachment,	250 00
275 00	Ditto, 6½ ft. bed, with smoothing knife attachment,	288 00
200 00	Ditto, 6½ ft. bed, without smoothing knife attachment,	238 00
185 00	Ordinary Back Smoothing Knife, per inch of face	
	in length, - - -	2 50
	No. 1 Rod Pin & Dowel Machine, with 3 heads, 7 1 1 1	35 00
\$ 80 00	No. 1 Rod Pin & Dowel Machine—power feed, - - -	65 00
25 00	No. 2 Rod Pin & Dowel Machine, with 3 heads, 3 1 1 1	25 00
125 00	Eave Trough Knife, - - -	12 00
90 00	Emery Grinding Machine, for two wheels, - - -	10 00
115 00	Counter Shaft for Ditto, - - -	10 00
	Emery Grinding Machine, double, for four wheels,	16 00
130 00	Counter Shaft for Ditto, - - -	12 00

SUNDRY MACHINES.—(Continued.)

Door, Blind and Sash Clamp,	\$120 00
Dado Head,	18 00
Heading Turner,	120 00
Band Saw Setting Machine,	12 00
Band Saw Filing Vice,	6 00
Wheels and Board for Ditto,	10 00
Band Saw Set and Filing Apparatus, complete,	30 00
Hand Matching Machine, iron frame,	80 00
Patrick's Rotary Force Pump, single,	120 00
Patrick's Rotary Force Pump, double, with shut-off,	350 00
Iron Boring Machine for Agricultural Machine Shops	165 00
Essery's Patent Loose Pulley,	
Shafting, Pulleys and Hangers, per lb.,	

SUNDRIES FOR MOULDING MACHINES.

Heads, 9 in., brass, slotted, (each)	\$17 00
Do. 8 in., do. do.	15 00
Do. 7 in., do. do.	14 00
Do. 6 in., do. do.	12 00
Do. Moulding, iron heads, brass caps,	7 00
Cutters, plain, per inch face,	35
Cutters, Moulding, per inch face,	50
Side Heads, brass, (each)	8 50
Cylinder Knives, (each) 9 in.,	2 00
Do. do. do. 8 in.,	1 80
Do. do. do. 7 in.,	1 55
Do., do. do. 6 in.,	1 32
Do. do. do. 4 in.,	88

SUNDRIES FOR PLANING MACHINES.

Cylinder Knives, (each) 26 in.,	\$ 4 68
Do. do. do. 24 in.,	4 32
Do. do. do. 20 in.,	3 60
Do. do. do. 16 in.,	2 88
Do. do. do. 12 in.,	2 16
Matcher Heads, brass, per pair, 6 in., for three cutters, (cutters not included,)	27 00
Cutters for Ditto, (per pair heads) to work two thicknesses,	9 00
Matcher Heads, brass (per pair,) 5½ in. diam., for two cutters,	20 50
Matcher Heads, brass (per pair,) 5 in. diam., for two cutters,	18 00
Cutters for Ditto, (per pair heads) to work two thicknesses,	5 75
Matcher Heads, iron, (per pair,)	14 00
Matcher Setter,	10 00
Machine for Grinding Planer Knives,	10 00

1
11
14
Bo
fac
ing
Car
Fac
pol
No.
No.
No.
No.
No.

\$120 00
 18 00
 120 00
 12 00
 6 00
 10 00
 30 00
 80 00
 120 00
 350 00
 165 00

BAND SAW BLADES.

1	inch, each,	-	-	-	-	-	-
1	inch, each,	-	-	-	-	-	-
1	inch, each,	-	-	-	-	-	-
1	inch, each,	-	-	-	-	-	-
1	inch, each,	-	-	-	-	-	-
1	inch, each,	-	-	-	-	-	-
1	inch, each,	-	-	-	-	-	-
1	inch, each,	-	-	-	-	-	-

THE BOSS



\$17 00
 15 00
 14 00
 12 00
 7 00
 35
 50
 8 50
 2 00
 1 80
 1 55
 1 32
 88

WE have made arrangements with J. L. PERRY & Co., of Berlin, Wisconsin, to manufacture their **BOSS SAND PAPERING MACHINE**—the only one manufactured which is adapted to all kinds of Wood Polishing, such as is done in Furniture, Coffin, Waggon, Carriage, Sash, Door and Blind, and Sewing Machine Factories, or any other Factory having flat surfaces to polish.

\$ 4 68
 4 32
 3 60
 2 88
 2 16
 27 00
 9 00
 20 50
 18 00
 5 75
 14 00
 10 00
 10 00

No. 1—Single Machine, with 24 inch Sand and Brush Cylinder,	\$375 00
No. 2—Single Machine, with 30 inch Sand and Brush Cylinder,	425 00
No. 3—Single Machine, with 36 inch Sand and Brush Cylinder,	450 00
No. 1—Double, has two Sand Cylinders and Brush Cylinder, 24 inch wide,	500 00
No. 2—Double, has two Sand Cylinders and Brush Cylinder, 30 inch wide,	550 00
No. 3—Double, has two Sand Cylinders and Brush Cylinder, 36 inch wide,	600 00

TERMS FOR THESE MACHINES—Cash, 30 days.

NO. 1 SHAPING MACHINE.

