

**CIHM  
Microfiche  
Series  
(Monographs)**

**ICMH  
Collection de  
microfiches  
(monographies)**



**Canadian Institute for Historical Microreproductions / Institut canadien de microreproductions historiques**

**© 1996**

## Technical and Bibliographic Notes / Notes technique et bibliographiques

The Institute has attempted to obtain the best original copy available for filming. Features of this copy which may be bibliographically unique, which may alter any of the images in the reproduction, or which may significantly change the usual method of filming are checked below.

- ☒ Coloured covers / Couverture de couleur
- ☐ Covers damaged / Couverture endommagée
- ☐ Covers restored and/or laminated / Couverture restaurée et/ou pelliculée
- ☐ Cover title missing / Le titre de couverture manque
- ☒ Coloured maps / Cartes géographiques en couleur
- ☒ Coloured ink (i.e. other than blue or black) / Encre de couleur (i.e. autre que bleue ou noire)
- ☒ Coloured plates and/or illustrations / Planches et/ou illustrations en couleur
- ☐ Bound with other material / Relié avec d'autres documents
- ☐ Only edition available / Seule édition disponible
- ☐ Tight binding may cause shadows or distortion along interior margin / La reliure serrée peut causer de l'ombre ou de la distorsion le long de la marge intérieure.
- ☐ Blank leaves added during restorations may appear within the text. Whenever possible, these have been omitted from filming / Il se peut que certaines pages blanches ajoutées lors d'une restauration apparaissent dans le texte, mais, lorsque cela était possible, ces pages n'ont pas été filmées.

- ☒ Additional comments /  
Commentaires supplémentaires:

Part of cover title hidden by label.

L'Institut a microfilmé le meilleur exemplaire qu'il lui a été possible de se procurer. Les détails de cet exemplaire qui sont peut-être uniques du point de vue bibliographique, qui peuvent modifier une image reproduite, ou qui peuvent exiger une modifications dans la méthode normale de filmage sont indiqués ci-dessous.

- ☐ Coloured pages / Pages de couleur
- ☐ Pages damaged / Pages endommagées
- ☐ Pages restored and/or laminated / Pages restaurées et/ou pelliculées
- ☒ Pages discoloured, stained or foxed / Pages décolorées, tachetées ou piquées
- ☐ Pages detached / Pages détachées
- ☒ Showthrough / Transparence
- ☐ Quality of print varies / Qualité inégale de l'impression
- ☐ Includes supplementary material / Comprend du matériel supplémentaire
- ☐ Pages wholly or partially obscured by errata slips, tissues, etc., have been refilmed to ensure the best possible image / Les pages totalement ou partiellement obscurcies par un feuillet d'errata, une pelure, etc., ont été filmées à nouveau de façon à obtenir la meilleure image possible.
- ☐ Opposing pages with varying colouration or discolourations are filmed twice to ensure the best possible image / Les pages s'opposant ayant des colorations variables ou des décolorations sont filmées deux fois afin d'obtenir la meilleur image possible.

**This item is filmed at the reduction ratio checked below/**

**Ce document est filmé au taux de réduction indiqué ci-dessous.**

10x	14x	18x	22x	26x	30x
			✓		
12x	16x	20x	24x	28x	32x

The copy filmed here has been reproduced thanks to the generosity of:

Hamilton Public Library

The images appearing here are the best quality possible considering the condition and legibility of the original copy and in keeping with the filming contract specifications.

Original copies in printed paper covers are filmed beginning with the front cover and ending on the last page with a printed or illustrated impression, or the back cover when appropriate. All other original copies are filmed beginning on the first page with a printed or illustrated impression, and ending on the last page with a printed or illustrated impression.

The last recorded frame on each microfiche sheet contains the symbol  $\rightarrow$  (meaning "CONTINUED"), or the symbol  $\nabla$  (meaning "END"), whichever applies.

Maps, plates, charts, etc., may be filmed at different reduction ratios. Those too large to be entirely included in one exposure are filmed beginning in the upper left hand corner, left to right and top to bottom, as many frames as required. The following diagrams illustrate the method:

1	2	3
---	---	---

1	2
4	5

L'exemplaire filmé fut reproduit grâce à la  
générosité de:

Hamilton Public Library

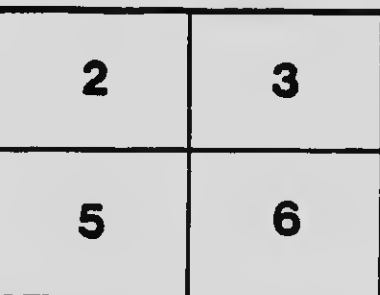
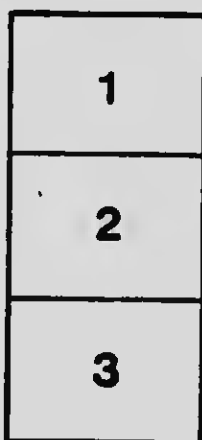
Les images suivantes ont été reproduites avec le  
plus grand soin, compte tenu de la condition et  
de la netteté de l'exemplaire filmé, et en  
conformité avec les conditions du contrat de  
filmage.

Les exemplaires originaux dont la couverture en  
papier est imprimée sont filmés en commençant  
par le premier feuillet et en terminant soit par le  
dernier feuillet qui comporte une empreinte  
d'impression ou d'illustration, soit par le second  
feuillet, selon le cas. Tous les autres exemplaires  
originaux sont filmés en commençant par le  
premier feuillet qui comporte une empreinte  
d'impression ou d'illustration et en terminant par  
le dernier feuillet qui comporte une telle  
empreinte.

Un des symboles suivants apparaît sur le  
dernier image de chaque microfiche, selon le  
cas: le symbole → signifie "A SUIVRE", le  
symbole ∇ signifie "FIN".

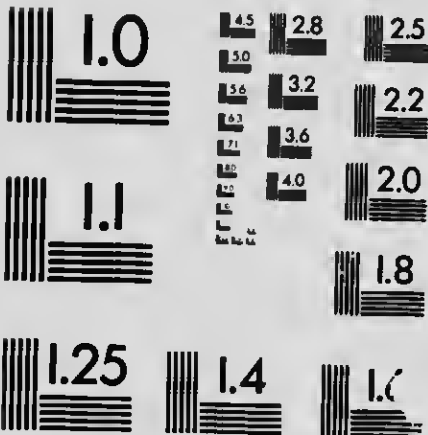
Les cartes, planches, tableaux, etc., peuvent être  
filmés à des taux de réduction différents.

Lorsque le document est trop grand pour être  
reproduit en un seul cliché, il est filmé à partir  
de l'angle supérieur gauche, de gauche à droite,  
et de haut en bas, en prenant le nombre  
d'images nécessaire. Les diagrammes suivants  
illustrent la méthode.



# MICROCOPY RESOLUTION TEST CHART

(ANSI and ISO TEST CHART No. 2)



APPLIED IMAGE Inc

1653 East Main Street  
Rochester, New York 14609 USA  
(716) 482 - 0300 ~ Phone  
(716) 288 - 5989 ~ Fax

R

33

.204

71357

IMP

CESH

Concerning  
"The Kewatin"  
"The Diabase"  
and Conglomerate Rock



THE  
IMPERIAL OTTO  
MINING COMPANY  
LIMITED

---

NO PERSONAL LIABILITY

---

*Capitalization*

250,000 Shares - - par value \$1.00 each  
Already Issued - 134,000

---

*Charter*

Charter obtained by Letters Patent under Ontario  
Companies Act

---

*Head Office*

HAMILTON - ONTARIO

---

*Business Office*

16 JAMES STREET SOUTH

---

A copy of this Prospectus has been Filed with the  
Provincial Secretary.





## OFFICERS

### *President*

GEORGE SCHNABEL, Brewer, Hamilton, Ont.

### *Vice-President*

STEPHEN J. JONES, M. D., Glanford, Ont.

### *2nd Vice-President*

ROBERT C. HORNE, Engineer, M. C. Ry.  
St. Thomas, Ont.

### *Secretary-Treasurer*

JOHN A. BABY, Accountant, Hamilton, Ont.

### *Directors*

DANIEL REED, M. L. A., Glanford, Ont.

LEWIS M. MILLER, Superintendent M. C. Ry.  
Hospital Assn., St. Thomas, Ont.

JAMES C. GURNETT, General Merchant  
Ancaster, Ont.

JAMES J. LYNCH, Broker, Hamilton, Ont.

F. HOUGH, Tradesman, Hamilton, Ont.

J. T. H. REGAN, Gentleman, Ancaster, Ont.

EDMOND D. LONG, Engineer, M. C. Ry.  
St. Thomas, Ont.

### *Executive Committee*

GEORGE SCHNABEL    STEPHEN J. JONES, M.D.

F. HOUGH

JOHN A. BABY

### *Bankers*

THE CANADIAN BANK OF COMMERCE

### *Auditor*

W. O. MENDER, C. A.



## THE COMPANY'S CHARTER

---

The Imperial Otto Mining Company, Limited, is incorporated under The Ontario Mining Companies' Act, with power to acquire, own, lease, prospect for, open, explore, develop, work, improve, maintain and manage mines and mineral lands and deposits, and to dig for, raise, crush, wash, smelt, assay, analyze, reduce, amalgamate, pipe, convey and otherwise treat ores, metals and minerals whether belonging to the Company or not, and to render the same merchantable, and to sell or otherwise dispose of the same or any part thereof or interest therein, and to purchase, sell or otherwise deal in minerals and metals, and to take, acquire and hold as consideration for ores, metals or minerals sold or otherwise disposed of, or for goods supplied or for work done by contract or otherwise, shares, debentures or other securities of or in any other Company having objects similar in whole or in part to those of the Company hereby incorporated, and to sell and otherwise dispose of the same, and with all the other incidental powers under the said Act.



## THE COMPANY'S PROPERTIES

---

Cobalt, Ont., July 24th, 1909.

To the Imperial Otto Mining Company, Limited,  
Hamilton, Ont.

Gentlemen:—I beg to hand you herewith a report on your mining properties, three of which are located in the Township of Otto, Nipissing District, and described as follows:—

"The Kathleen," No. 10249, N. W. Quarter S. Half, Lot 6, Con. 5, 40 Acres.

"The Anthony," No. 10328, S. W. Quarter N. Half, Lot 6, Con. 5, 40 Acres.

"The Tilly," No. 10329, S. E. Quarter N. Half, Lot 6, Con. 5, 40 Acres.

The other claim being located in the Township of Evanurel, which is situated about 27 miles north of Cobalt, and described as follows:—"The Happy Jack," No. 9698, N. W. Quarter, S. Half, Lot 4, Con. 6, 40 Acres.

## At Otto Township

### THE KATHLEEN, No. 10249

On this claim I find the formation to consist of principally kewatin and diabase, in which occur many contacts, with occasional outcroppings of conglomerate rock.

Here a shaft 5 feet x 8 has been sunk on two silver bearing calcite veins, one of these veins being 10 inches wide and the other being from  $1\frac{1}{2}$  to 2 inches wide of pink, white and green colored calcite. These veins dip at an angle of about 45 degrees, and owing to the 10-inch vein being closest to the side of the shaft, left it at about a depth of 15 feet, and while the  $1\frac{1}{2}$ -inch vein is still in the shaft, it will probably leave it at a depth of about 40 feet. These veins I am pleased to state are in the kewatin, within about 20 feet of a diabase contact, and as the diabase appears to underlie the kewatin, the prospects of striking this underlying diabase is immediately apparent, in which case the calcite has a good chance of high values in silver. Incidentally I may say that your formation here is the same as the Temiskaming, this Company having struck a body of almost solid silver 32 inches wide after following their vein down to a depth of 75 feet or thereabouts, and while it may not follow that you will be so fortunate, still I can see no reason why you should not make a strike at depth.

Again on this claim you have a mixed vein of quartz and calcite about 28 inches wide, and

so far exposed for about a distance of 45 feet on the surface. This vein is also in the kewatin, and about 10 feet from a diabase contact, the vein matter being considerably weathered, and mineralized at the surface.

As this vein has just been located within the past few days, nothing has as yet been done in the way of opening it up, and could not at the present time pass a definite opinion on it, as to its possibilities and merits. However, I would suggest the sinking of a test pit, nearest to where the contact occurs, in order to determine its possibilities.

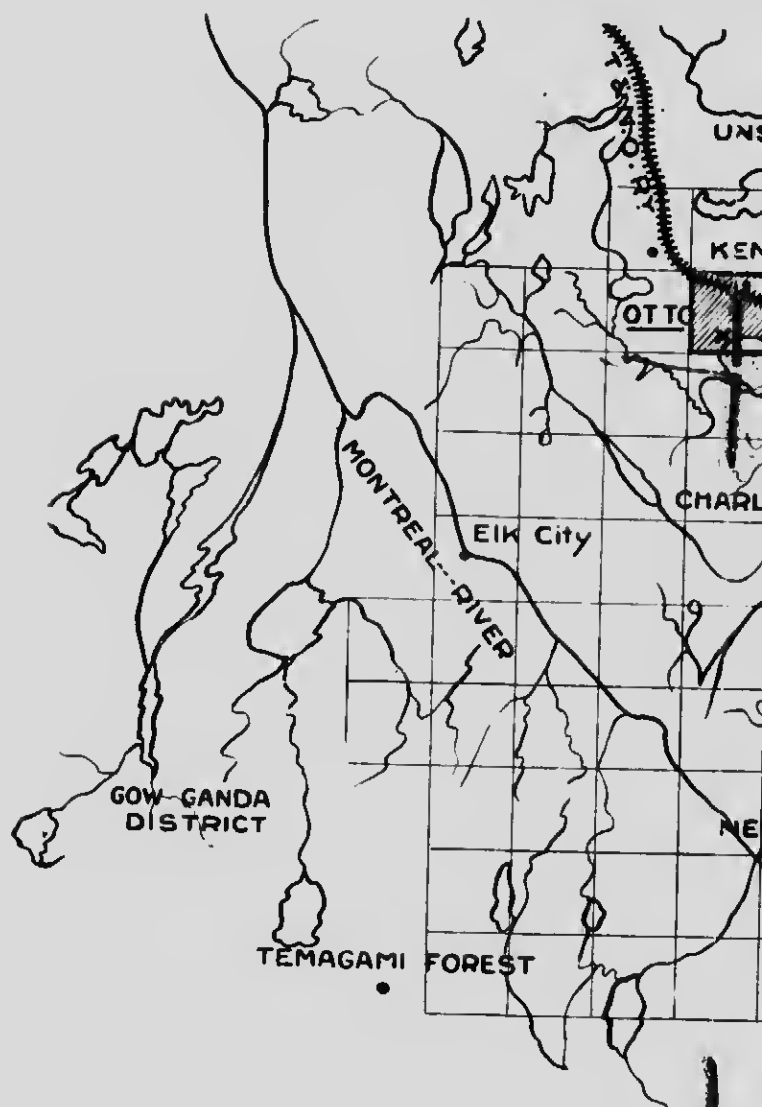
Between the above two mentioned veins, and apparently running about parallel with them about due east and west, is a dyke of kewatin slate, highly charged with magnetite iron, from 20 to 40 feet in width, and while the ore is of a low grade at the surface, it is impossible to say what you may strike at a depth of say 10 or 15 feet.

---

### **In Regard to Future Operations**

I would suggest that you continue operations at the present 32-foot shaft to a depth of at least 75 or 100 feet before crosscutting to catch the calcite veins and drifting, and from which drift you could continue your crosscut to the iron dyke should its strike continue the same, which is altogether likely.

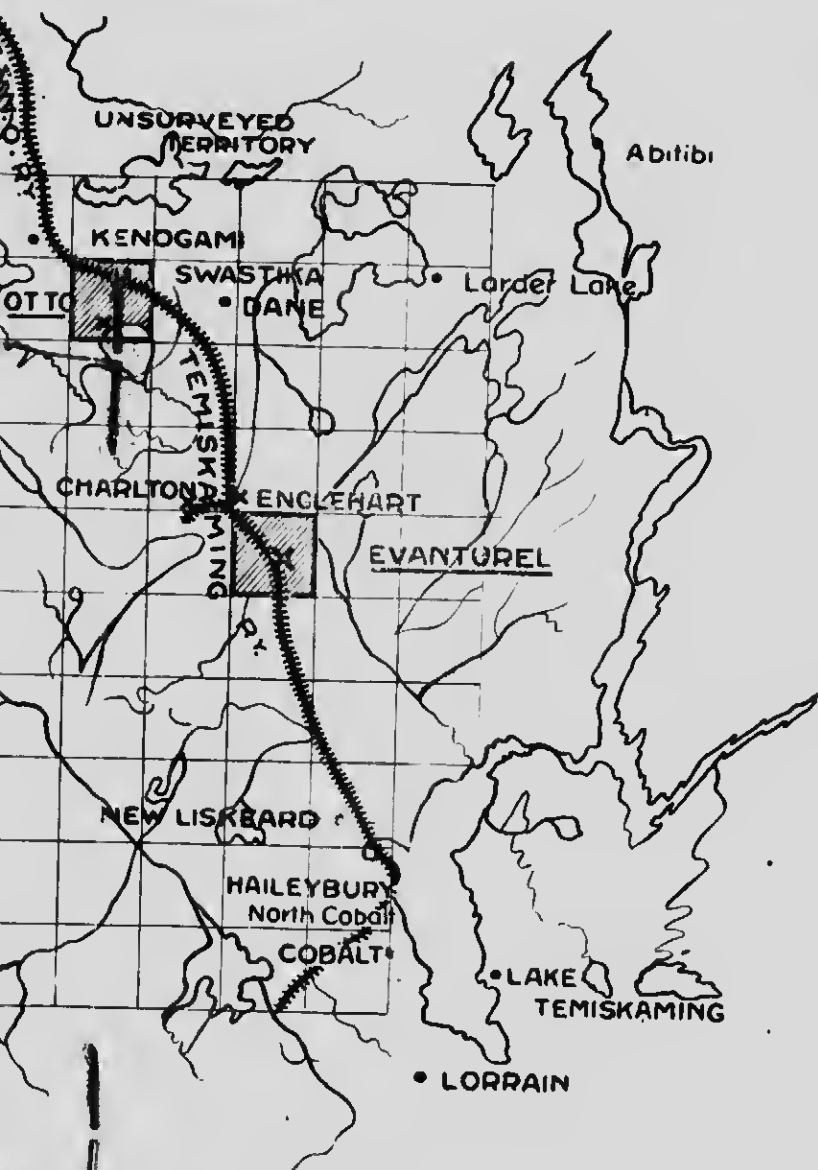
Map showing the Cobalt, Nickel  
District of N



THE IMPERIAL OTTO MINING  
ARE LOCAL

in the *shaded Townships* of "Otto" and "Evanturel"  
report, which accompanies this plan. You will  
situated almost in the centre of this rich mineral b

t, Nickel, Arsenic, Silver, Gold Area  
District of Nipissing



rather in  
O. H. Jones  
Ship

MINING COMPANY'S PROPERTIES  
ARE LOCATED

"Evanturel" and further described in the Engineers'  
You will note that this company's properties are  
mineral belt.

### **On the Tilley, No. 10329**

On this claim you have a quartz vein about 6 inches wide. As no development work has been done in the way of showing up the vein on this property, the extent of the vein or its merits cannot at the present time be determined. The vein matter assays silver. This property appears to be well worth further prospecting.

### **On the Anthony, No. 10328**

You have here a quartz vein about 3 feet wide. Galena appears in small quantities at the surface. Again, as in the case of the Tilly claim, no development has as yet been accomplished, all energy having been expended so far on the Kathleen, which is contiguous to these two claims.

### **At Evanturel Township**

#### **THE HAPPY JACK, No. 9698**

Twenty acres of this claim consist of diabase outcrop about 150 feet high, on which a pit has been sunk to a depth of about 10 feet on two calcite veins, and another pit has been sunk on a network of calcite veins on the hill-top to a depth of about 5 feet. The vein matter from this property also assays silver.

### **In Regard to Fuel**

The timber on your properties consists of Spruce, Balsam of Giliad, Poplar and Birch, suitable for all general purposes, and plenty of water is available.



### **Railway Facilities**

Your claims are all within  $2\frac{1}{2}$  miles of the Temiskaming and Northern Ontario Railway, and are easy of access; in fact, a good wagon road brings you within half a mile of your property in Evanturel from the railway station.

I beg to remain, yours very truly,

(Signed) J. T. FEE,

Mining and Consulting Engineer.

### **Magnetic Iron Ore, Claim No. 10249**

The following analysis of our magnetic iron ore was made by the Carnegie Steel Co., at the laboratory of the Carrie Furnaces at Rankin, Pa., and speaks for itself.

#### **THE CARNEGIE STEEL CO.**

Laboratory of

**The Carrie Furnaces, Rankin, Pa.**

**September 2nd, 1909**

NAME	MAGNETIC IRON ORE			
	DRY		WET	
	%	.000	%	.000
Silica .....		12.30		
IRON .....		57.99		
Manganse.....		0.32		
Phosphorous.....		0.224		
Moisture .....				
Alumina .....		0.68		
Lime .....		3.46		
Magnesia.....		3.19		
Volatile Matter.....				
Carbon .....				
Ferrous Oxide.....		21.27		
Sulphur.....		0.020		
Combined water.....				

We are also advised that the ore is almost self fluxing as the analysis will show, and that this ore seems to be very satisfactory, and should have no trouble in getting a market in Canada for electric furnace smelting.

---

**An Abstract from Volume XVII of the 17th Annual  
Report of The Bureau of Mines for the year 1908  
Published by order of the Legislative Assembly  
and dealing with the Steel and Iron Industry  
of Ontario is given herewith :**

---

### **The Iron Ores of Ontario**

"The mining of iron ore in Ontario has been and still is on a very small scale compared with the American side of Lake Superior, and any attempt to describe the iron ore industry of the Province must necessarily have in view the probable growth of this industry, rather than its achievements in the past."

### **Output Small Compared with U. S.**

"A comparison with the output from the great American mines may seem out of place, but it will serve to show the proportions to which mining operations in Ontario must grow if this Province is to take high rank in the production of iron and steel."

"There are the same rock formations in northern Ontario as are found throughout the iron ranges of Michigan, Wisconsin and Minnesota, and they contain the iron series that are in many cases identical with those associated with the ore bodies of the American ranges."

"Banded jaspers, magnetites and hematites occur for many hundred miles throughout northern Ontario, and when thoroughly and intelligently prospected will no doubt afford many valuable ore bodies. If the Americans are so far ahead of us in the production of iron ore, it is because they have spent more money in

the exploration of one range alone than has been expended in exploring the whole of northern Ontario. The Americans, realizing this fact themselves, have of late years spent considerable sums of money prospecting the Ontario ranges. That success will attend their efforts is reasonably certain, and unless our ironmasters rise to the occasion and join in the search, they will be forced into the position of isolated buyers of native ores from American miners. At the same time we may be confident that the greater part of the output from these prospective mines will be exported to the United States and smelted in American furnaces."

---

## TITLE TO PROPERTIES

Our four mining claims comprising 160 acres, and mentioned in the report were purchased from The Pioneer Exploration Company, Limited, of Englehart, Ont., for 120,000 fully paid shares of this Company's capital stock. The said shares having been issued to the said Pioneer Exploration Company in full satisfaction thereof, on the 2nd day of February, 1909, and are recorded at the mining recorder's office at Haileybury, Ont., as the properties of The Imperial Otto Mining Co., Limited.

Copies of the contracts of purchase may be inspected at the Company's office.

## **Development**

While many new and exceptionally promising leads have been exposed recently, during the course of development of our claims, in addition to those already referred to, and which are of such a nature as to warrant immediate attention, still we can say that our properties have not as yet been half prospected ; however a gang of men are at present stripping, trenching and further prospecting the properties, and at the same time arrangements are being made whereby active mining operations will be carried on along the lines laid down by our mining engineer, and which should enable us to cut at least four veins at a depth of 100 feet on claim No. 10249, and within a crosscut of about 60 or 90 feet. Of these last mentioned leads two are calcite one iron, and one quartz, all in the Keewatin and close to the diabase at surface. Specimens of the vein matter received from time to time may be seen at the company's office.

## **The Company's Policy**

The Company's policy in the development of the properties is to keep the subscribed capital as low as possible and at the same time sufficient for their proper development, so that the greatest possible returns to the interested few may be realized.

All cheques, money or express orders should be made payable to the Company, at par :—

## STATUTORY INFORMATION

---

### A

#### **Incorporators, and Subscriptions Thereof**

E. D. LONG, St. Thomas, Ont....100 shares.  
R. C. HORNE, St. Thomas, Ont...100 shares.  
J. A. BABY, Hamilton, Ont.....100 shares.  
M. T. IRVING, Hamilton, Ont....100 shares.  
A. WATT, Hamilton, Ont.....100 shares.  
W. D. BABY, Heaslip, Ont.....100 shares.  
J. J. MARKHAM, Hamilton, Ont...100 shares.

### B

One share of stock necessary to qualify as a director. There is no remuneration to directors as such, but by a resolution of the Board may be allowed fees for attending meetings and for travelling expenses, and that any Director who is called upon to perform any extra service for the Company shall be remunerated therefor.

### C

Directors—See page 3.

### D

The directors proceeded to allotment only after 4,000 shares had been subscribed, and paid for in cash. Issued under a by-law at a discount of not more than 75 per cent.

### E

The shares being sold at a discount no calls can be made. The shares therefore are not subject to call.

**F**

120,000 shares fully paid have been issued to The Pioneer Exploration Co., Limited, in full payment of that Company's properties.

Nothing paid for good-will.

**G**

Name and address of the vendors to the Company—The Pioneer Exploration Co., Ltd., of Englehart, Ontario.

**H—See F**

**I**

No stock to be given as a commission, a brokerage fee of 3 per cent. only being allowed.

**J**

The preliminary expenses of the Company did not exceed \$550.00.

**K**

There is no money or stock paid to promoters for promotion.

**L**

Copies of material contracts may be inspected at the Company's office.

**M**

Auditor—W. O. Menger, C.A.

**N**

The management is vested in a board of eleven directors.

Dated this 1st day of November, 1909.



