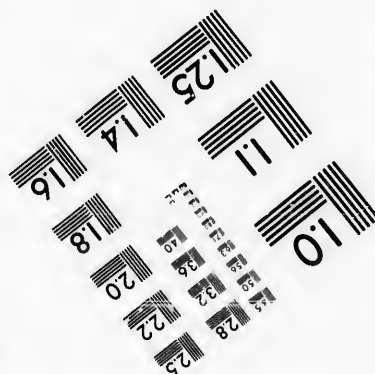
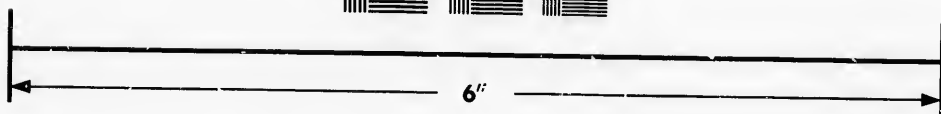
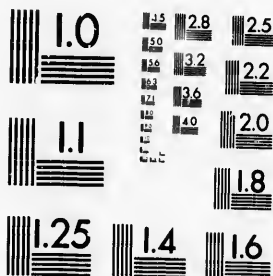


**IMAGE EVALUATION
TEST TARGET (MT-3)**



**Photographic
Sciences
Corporation**

23 WEST MAIN STREET
WEBSTER, N.Y. 14580
(716) 872-4503



**CIHM/ICMH
Microfiche
Series.**

**CIHM/ICMH
Collection de
microfiches.**



Canadian Institute for Historical Microreproductions / Institut canadien de microreproductions historiques



© 1986

The copy filmed here has been reproduced thanks to the generosity of:

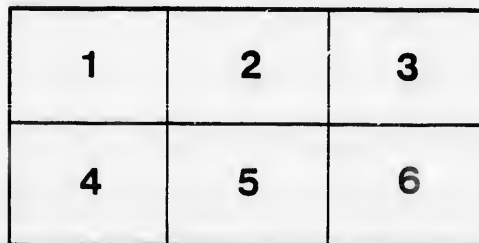
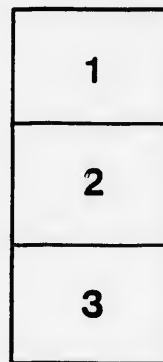
D. B. Weldon Library
University of Western Ontario
(Regional History Room)

The images appearing here are the best quality possible considering the condition and legibility of the original copy and in keeping with the filming contract specifications.

Original copies in printed paper covers are filmed beginning with the front cover and ending on the last page with a printed or illustrated impression, or the back cover when appropriate. All other original copies are filmed beginning on the first page with a printed or illustrated impression, and ending on the last page with a printed or illustrated impression.

The last recorded frame on each microfiche shall contain the symbol \rightarrow (meaning "CONTINUED"), or the symbol ∇ (meaning "END"), whichever applies.

Maps, plates, charts, etc., may be filmed at different reduction ratios. Those too large to be entirely included in one exposure are filmed beginning in the upper left hand corner, left to right and top to bottom, as many frames as required. The following diagrams illustrate the method:



L'exemplaire filmé fut reproduit grâce à la générosité de:

D. B. Weldon Library
University of Western Ontario
(Regional History Room)

Les images suivantes ont été reproduites avec le plus grand soin, compte tenu de la condition et de la netteté de l'exemplaire filmé, et en conformité avec les conditions du contrat de filmage.

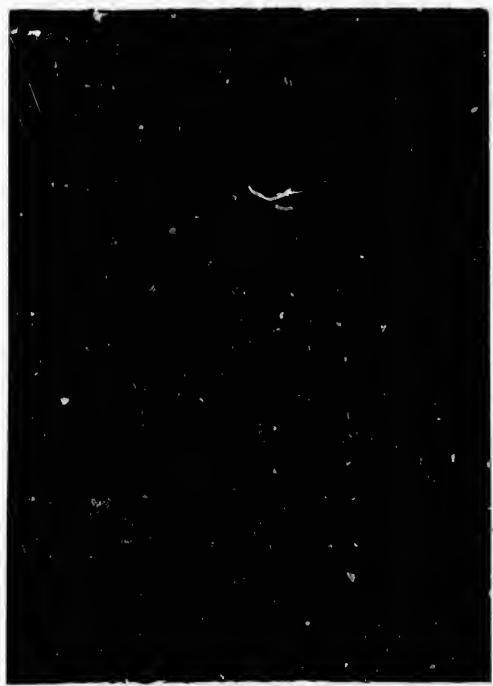
Les exemplaires originaux dont la couverture en papier est imprimée sont filmés en commençant par le premier plat et en terminant soit par la dernière page qui comporte une empreinte d'impression ou d'illustration, soit par le second plat, selon le cas. Tous les autres exemplaires originaux sont filmés en commençant par la première page qui comporte une empreinte d'impression ou d'illustration et en terminant par la dernière page qui comporte une telle empreinte.

Un des symboles suivants apparaîtra sur la dernière image de chaque microfiche, selon le cas: le symbole \rightarrow signifie "A SUIVRE", le symbole ∇ signifie "FIN".

Les cartes, planches, tableaux, etc., peuvent être filmés à des taux de réduction différents. Lorsque le document est trop grand pour être reproduit en un seul cliché, il est filmé à partir de l'angle supérieur gauche, de gauche à droite, et de haut en bas, en prenant le nombre d'images nécessaire. Les diagrammes suivants illustrent la méthode.

MA





Go

Fr

Al

Le

Er

Mi

Jo

Be

Ka

Sir John
MARTIN HARVEY
will be supported by

Gordon McLeod

Fred Grove

Alfred Ibberson

Leonard S.
Daniels

Eric Howard

Michael
Mackenzie

John Burton

Bernard
Nichols

Karon Tillman



Sir John Martin Harvey's

Canadian Repertoire will include the following:

The Corsican Brothers

A dramatic version of Alexandre Dumas' great work "Les Freres Corses": revised and rewritten from the original Lyceum version of Sir Henry Irving.

"It is one of those plays which seem to have no age": *London Daily Mail*. In these days of psychic research, this stirring play has an even deeper fascination, and even greater appeal.

Richard III

An extraordinarily effective production, on the most modern lines, of this "bustling" drama of action, and generally regarded as one of the finest performances given by Sir John Martin-Harvey. "Martin Harvey will henceforth rank among the memorable Shakespearean actors," says *The Sunday Times*.

The Lyons Mail

The latest addition to the repertoire, this play revives memories of the palmy days of the old Lyceum under Sir Henry Irving, whose version will now be used. Like "The Corsican Brothers" it gives Sir John the opportunity of appearing in two different roles in the same play.

Garrick

This old favourite of Tom Robertson's, links the names of Sothern and Sir Charles Wyndham with that of Sir John Martin-Harvey, and will always keep a place in the affections of playgoers.

The Only Way

No tour of Sir John's would be considered complete without this representation of Charles Dickens' masterpiece "A Tale of Two Cities".



Business Manager	-	-	FRANK B. O'NEILL
Canadian and Press Representative	-	-	B. E. LANG
Stage Director	-	-	KENDAL CHALMERS
Musical Director	-	-	W. H. HUDSON
Assistant Stage Manager	-	-	ERNEST ST. JOHN
Secretary	-	-	KITTY VINCENT

Sir John
MARTIN HARVEY

will be supported by

Marie Linden

Mary Gray

Elana Aherne

Enid Clark

Daisy Sedger

Mary Kempster



and

N. de SILVA



Grand Opera House

LONDON (Ont.)

Fri. and Sat. Jan. 22

Matinee Saturday

