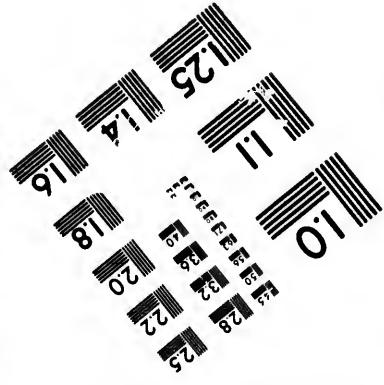
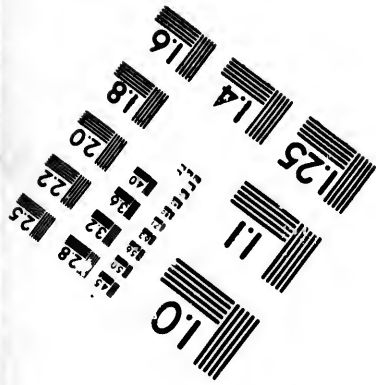
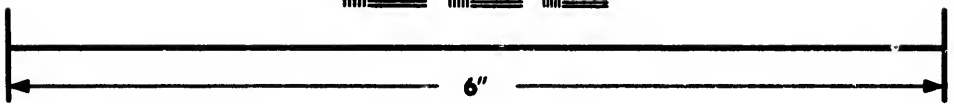
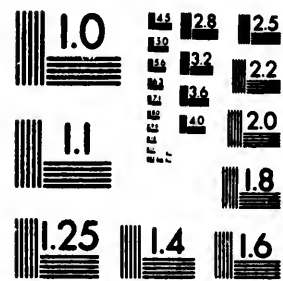


**IMAGE EVALUATION
TEST TARGET (MT-3)**



**Photographic
Sciences
Corporation**

23 WEST MAIN STREET
WEBSTER, N.Y. 14580
(716) 872-4503

**CIHM/ICMH
Microfiche
Series.**

**CIHM/ICMH
Collection de
microfiches.**



Canadian Institute for Historical Microreproductions / Institut canadien de microreproductions historiques

© 1987

Technical and Bibliographic Notes/Notes techniques et bibliographiques

The Institute has attempted to obtain the best original copy available for filming. Features of this copy which may be bibliographically unique, which may alter any of the images in the reproduction, or which may significantly change the usual method of filming, are checked below.

L'Institut a microfilmé le meilleur exemplaire qu'il lui a été possible de se procurer. Les détails de cet exemplaire qui sont peut-être uniques du point de vue bibliographique, qui peuvent modifier une image reproduite, ou qui peuvent exiger une modification dans la méthode normale de filmage sont indiqués ci-dessous.

- Coloured covers/
Couverture de couleur
- Covers damaged/
Couverture endommagée
- Covers restored and/or laminated/
Couverture restaurée et/ou pelliculée
- Cover title missing/
Le titre de couverture manque
- Coloured maps/
Cartes géographiques en couleur
- Coloured ink (i.e. other than blue or black)/
Encre de couleur (i.e. autre que bleue ou noire)
- Coloured plates and/or illustrations/
Planches et/ou illustrations en couleur
- Bound with other material/
Relié avec d'autres documents
- Tight binding may cause shadows or distortion
along interior margin/
La reliure serrée peut causer de l'ombre ou de la
distorsion le long de la marge intérieure
- Blank leaves added during restoration may
appear within the text. Whenever possible, these
have been omitted from filming/
Il se peut que certaines pages blanches ajoutées
lors d'une restauration apparaissent dans le texte,
mais, lorsque cela était possible, ces pages n'ont
pas été filmées.
- Additional comments:/
Commentaires supplémentaires:

- Coloured pages/
Pages de couleur
- Pages damaged/
Pages endommagées
- Pages restored and/or laminated/
Pages restaurées et/ou pelliculées
- Pages discoloured, stained or foxed/
Pages décolorées, tachetées ou piquées
- Pages detached/
Pages détachées
- Showthrough/
Transparence
- Quality of print varies/
Qualité inégale de l'impression
- Includes supplementary material/
Comprend du matériel supplémentaire
- Only edition available/
Seule édition disponible
- Pages wholly or partially obscured by errata
slips, tissues, etc., have been refilmed to
ensure the best possible image/
Les pages totalement ou partiellement
obscurcies par un feuillet d'errata, une pelure,
etc., ont été filmées à nouveau de façon à
obtenir la meilleure image possible.

This item is filmed at the reduction ratio checked below/
Ce document est filmé au taux de réduction indiqué ci-dessous.

10X	14X	18X	22X	26X	30X
<input type="checkbox"/>	<input type="checkbox"/>	<input type="checkbox"/>	<input checked="" type="checkbox"/>	<input type="checkbox"/>	<input type="checkbox"/>
12X	16X	20X	24X	28X	32X

The copy filmed here has been reproduced thanks to the generosity of:

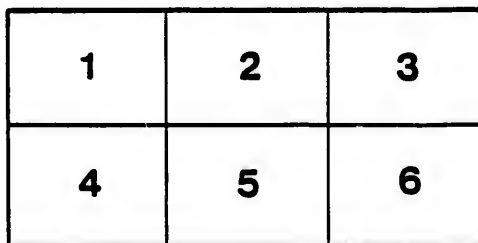
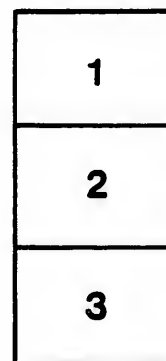
D. B. Weldon Library
University of Western Ontario
(Regional History Room)

The images appearing here are the best quality possible considering the condition and legibility of the original copy and in keeping with the filming contract specifications.

Original copies in printed paper covers are filmed beginning with the front cover and ending on the last page with a printed or illustrated impression, or the back cover when appropriate. All other original copies are filmed beginning on the first page with a printed or illustrated impression, and ending on the last page with a printed or illustrated impression.

The last recorded frame on each microfiche shall contain the symbol \rightarrow (meaning "CONTINUED"), or the symbol ∇ (meaning "END"), whichever applies.

Maps, plates, charts, etc., may be filmed at different reduction ratios. Those too large to be entirely included in one exposure are filmed beginning in the upper left hand corner, left to right and top to bottom, as many frames as required. The following diagrams illustrate the method:



L'exemplaire filmé fut reproduit grâce à la générosité de:

D. B. Weldon Library
University of Western Ontario
(Regional History Room)

Les images suivantes ont été reproduites avec le plus grand soin, compte tenu de la condition et de la netteté de l'exemplaire filmé, et en conformité avec les conditions du contrat de filmage.

Les exemplaires originaux dont la couverture en papier est imprimée sont filmés en commençant par le premier plat et en terminant soit par la dernière page qui comporte une empreinte d'impression ou d'illustration, soit par le second plat, selon le cas. Tous les autres exemplaires originaux sont filmés en commençant par la première page qui comporte une empreinte d'impression ou d'illustration et en terminant par la dernière page qui comporte une telle empreinte.

Un des symboles suivants apparaîtra sur la dernière image de chaque microfiche, selon le cas: le symbole \rightarrow signifie "A SUIVRE", le symbole ∇ signifie "FIN".

Les cartes, planches, tableaux, etc., peuvent être filmés à des taux de réduction différents. Lorsque le document est trop grand pour être reproduit en un seul cliché, il est filmé à partir de l'angle supérieur gauche, de gauche à droite, et de haut en bas, en prenant le nombre d'images nécessaire. Les diagrammes suivants illustrent la méthode.

ails
du
difier
une
page

rata
o

elure,
à

32X

PRIZE LIST

OF THE
FOURTEENTH ANNUAL

Western Fair

UNDER THE AUSPICES OF THE

East Middlesex and City of London Agricultural
and Horticultural Societies,

AT

LONDON, CANADA

ON

MONDAY, TUESDAY, WEDNESDAY, THURSDAY & FRIDAY,

Sept. 27 to Oct. 2, 1886

1886. THE WESTERN FAIR. 1886.

1886. THE WESTERN FAIR. 1886.

1886. THE WESTERN FAIR. 1886.

FIFTEENTH EXHIBITION

City of London, September 27th, 28th, 29th, 30th, and October 1st

FORM OF ENTRY.

TO THE SECRETARY,—

I, the undersigned, propose to exhibit the hereinafter named articles or stock at the Fifteenth Annual Western Fair, to be held at London, from September 27th to October 2nd, 1886, and I do herewith AFFIRM and CERTIFY that the said articles or stock so proposed to be exhibited by me are entered in accordance with the Rules and Regulations as laid down in the Prize List. See pages 4 to 12 of Prize List.

ENCLOSED FIND:

Membership to Western Fair.....	\$.
Extra Charges on Entries made after Sept. 20th..	\$.
Stabling.....	\$.
Entrance Fees on Poultry, Rabbits, Etc.....	\$.
For Space Charges.....	\$.
Total	\$.

Parties making Entries who are paid up members of the East Middlesex Agricultural Society or City of London Horticultural Society for 1886, are not required to become members of the Western Fair Association, but should state on the following blank line which Society they are members of:

Member of

In addition to the Membership Fee of One Dollar, 25c. extra will be charged on all entries received after Sept. 20th and up to Sept. 27th. For entries made on Monday of the Fair Week, 50c. extra will be charged.

All Fees for Membership, etc., must accompany Entry Form.

Name.....
Post Office.....
County.....
Province
Date.....

Horticultural Society for 1886, are not required to become members of the Western Fair Association, but should state on the following blank line which Society they are members of:

Member of

In addition to the Membership Fee of One Dollar, 25c. extra will be charged on all entries received after Sept. 20th and up to Sept. 27th. For entries made on Monday of the Fair Week, 50c. extra will be charged.

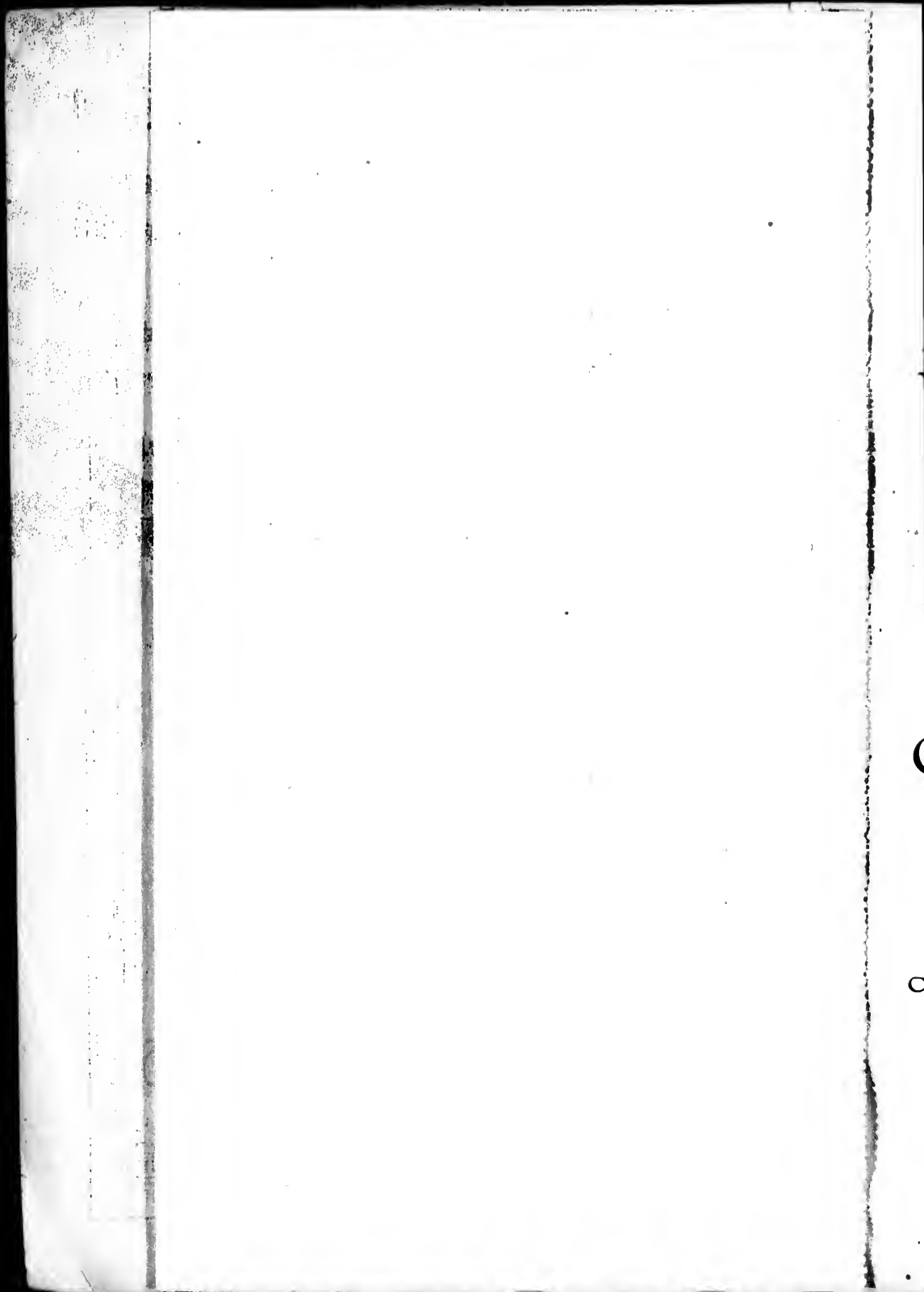
All Fees for Membership, etc., must accompany Entry Form.

Address all communications to

GEORGE MCBROOM,

Secretary Western Fair, LONDON, ONT.

CLASS.	SECTION.	DESCRIPTION OF ARTICLE OR ANIMAL.



PRIZE LIST, RULES AND REGULATIONS

—OF THE—

FOURTEENTH ANNUAL

WESTERN FAIR

UNDER THE AUSPICES OF THE

City of London and East Middlesex Agricultural
and Horticultural Societies,

TO BE HELD IN THE

CITY OF LONDON

SEPT. 27 TO OCT. 2, 1886

.....
COMPETITION OPEN TO THE WORLD.
.....

LONDON, ONTARIO:
ADVERTISER PRINTING AND PUBLISHING COMPANY.

1886.

W

El

RICHARD
GEO. T. H
D. MACK
D. MACK
GEO. McB
GEO. DOU

COM

EXECUTIVE-
Co
Ma
Ric
FINANCE -J
E.
PRINTING A
B.
ATTRACTION
J.
GROUNDS A
Tre
Mo
GATE AND
Tre
BOOTHS-CH
HORSES-EL
He
CATTLE- J
SHEEP AND
POULTRY-A
HORTICULTU
Cof
PALACE-W
Par
IMPLEMENTS
Gri
HONEY, BEE
Par
PRIZE LIST-
B.
EMPLOYMEN
Cou

OFFICERS

—OF THE—

WESTERN FAIR

Elected from the City of London and East Middlesex
Horticultural and Agricultural Societies, for

1886.

RICHARD WHETTER.....PRESIDENT, London, Ont.
 GEO. T. HISCOX.....FIRST VICE-PRESIDENT, " " "
 D. MACKENZIE, M.P.P.....SECOND VICE-PRESIDENT, Hyde Park, Ont.
 D. MACKENZIE, M.P.P.....TREASURER, " " "
 GEO. MCBROOM.....SECRETARY, London, Ont.
 GEO. DOUGLASS.....GENERAL SUPT OF GROUNDS, Ilderton, Ont.

COMMITTEE OF MANAGEMENT FOR 1886.

EXECUTIVE—W. Y. Brunton, Chairman; Col. Leys, J. B. Vining, J. T. Coughlin, B. C. McCann, Thos. Chalmers, Geo. T. Hiscox, A. J. B. Macdonald, Jas. McLeod, John Kennedy, J. D. O'Neil, V. S., Richard Venning.

FINANCE—Thos. R. Parker, Chairman; J. B. Vining, A. J. B. Macdonald, E. R. Robinson, Col. Leys.

PRINTING AND ADVERTISING—Richard Whetter, Chairman; James McLeod, B. C. McCann, John Kennedy, J. T. Coughlin, W. Y. Brunton.

ATTRACTIONS—Geo. T. Hiscox, Chairman; T. C. Hewitt, Col. F. B. Leys, J. B. Vining, John Kennedy.

GROUNDS AND BUILDINGS—John Kennedy, Chairman; Richard Venning, Chas. Trebilcock, A. J. B. Macdonald, D. Mackenzie, Jas. McLeod, B. C. McCann, J. B. Vining.

GATE AND TICKET—Joseph Wheaton, Chairman; E. R. Robinson, Chas. Trebilcock, Richard Venning, Eli Griffiths.

BOOTHES—Chas. Trebilcock, Chairman; Jas. McLeod, Thos. Chalmers.

HORSES—Eli Griffiths, Chairman; Col. F. B. Leys, J. D. O'Neil, V. S., T. C. Hewitt, Jas. McLeod, A. J. B. Macdonald, John Kennedy.

CATTLE—John T. Coughlin, Chairman; Jos. Wheaton.

SHEEP AND HOGS—John Durand, Chairman; John Kennedy.

POULTRY—A. J. B. Macdonald, Chairman; Eli Griffiths.

HORTICULTURAL HALL—E. R. Robinson, Chairman; J. B. Vining, Thos. Coffee.

PALACE—W. Y. Brunton, Chairman; A. B. Powell, B. C. McCann, Thos. R. Parker.

IMPLEMENTS AND CARRIAGES—Jas. McLeod, Chairman; Geo. T. Hiscox, Eli Griffiths, J. D. O'Neil, V. S.

HONEY, BEES AND FISH—T. C. Hewitt, Chairman; A. B. Powell, Thos. R. Parker.

PRIZE LIST—Geo. Douglass, Chairman; D. Mackenzie, W. Y. Brunton, B. C. McCann, Richard Venning, James McLeod, Thos. R. Parker.

EMPLOYMENT AND WAGES—B. C. McCann, Chairman; James McLeod, J. T. Coughlin.

EAST MIDDLESEX AGRICULTURAL SOCIETY.

OFFICERS :

RICHARD WHETTER,	-	-	-	President, London, Ont.
D. MACKENZIE, M. P. P.,				1st Vice " Hyde Park, Ont.
CHAS. TREBILCOCK,				2nd " London, Ont.
D. MACKENZIE,				Treasurer, Hyde P. rk, Ont.
GEO. DOUGLASS,				Secretary, Ilderton, Ont.

DIRECTORS :

COL. F. B. LEYS. JOHN KENNEDY. JOHN T. COUGHLIN. A. J. B. MACDONALD.		RICHARD VENNING. JOHN DURAND. JOSEPH WHEATON. THOMAS CHALMERS. GEORGE DOUGLASS.
---	--	---

CITY OF LONDON HORTICULTURAL AND AGRICULTURAL SOCIETY.

OFFICERS :

GEORGE T. HISCOX,	-	-	-	President,		London, Ont.
T. C. HEWITT,				1st Vice-President,	"	"
W. Y. BRUNTON,				2nd	"	"
" "				Treasurer,	"	"
GEORGE MCBROOM,				Secretary,	"	"

DIRECTORS :

E. R. ROBINSON, A. B. POWELL. THOS. R. PARKER. THOS. COFFEY.		J. B. VINING. J. D. O'NEIL, V.S. JAMES McLEOD. B. C. McCANN.
---	--	---

ELI GRIFFITH.

RU

Appro

The
 three cl
 1st.
 &c., and
 2nd
 and wh
 noted.
 3rd
 which v
 It i
 fully re
 ingly.
 conform

The
 register

EACH

The
 years of
 Sur
 o'clock
 each ac

CIETY.

Ont.
Ont.

Ont.
t.

L AND

London, Ont.
t, " "
" "
" "
" "

GENERAL

RULES and REGULATIONS

—OF THE—

WESTERN FAIR ASSOCIATION,

Approved and Adopted at a Meeting of the Board of
Directors held June 26, 1886.

SPECIAL NOTICE.

The Rules and Regulations of the Association are divided into
three classes, viz. :

1st.—Those that refer to Exhibitors, Judges, general arrangements,
&c., and are classified under their respective heads from page 4 to 12.

2nd—Those that govern all the classes of a particular department,
and which will be found at the head of the various departments herein
noted.

3rd—Those that refer to and govern any particular class, and
which will be specified at the head of the classes to which they refer.

It is *particularly requested* that all intending exhibitors will care-
fully read the Rules and Regulations and govern themselves accord-
ingly. Misunderstandings and trouble will be obviated by strictly
conforming to the conditions herein set forth.

ADMISSION TO THE GROUNDS.

The Association have arranged that admission shall be by self-
registering turnstiles, and not by ticket.

EACH PERSON MUST BE PROVIDED WITH THE EXACT
CHANGE BEFORE ENTERING.

The price of admission for one adult, or two children under 12
years of age, is 25 cents ; single ticket for children under 12, 15 cents.

Supply wagons, with driver only, will be admitted free up to 10
o'clock a. m. each day. After said hour the charges will be 50c. for
each admission.

Necessary attendants upon stock and machinery will be furnished with passes by the Secretary upon presentation of an order duly signed by the Superintendents of the grounds, palace, or horticultural departments. Said passes must bear the signature of the holder, and will be good for three admissions per day—*positively not transferable*, and will be FORFEITED if presented by any other person.

Judges and representatives of the Press will be supplied with badges and tickets. The former are furnished to designate honorary distinction and official connection with the fair, but have no admitting power whatever.

Entry tickets upon animals or articles will admit to the grounds the exhibitor or attendant in charge of such animals or articles till 10 o'clock a. m. Tuesday, Sept. 28th (except as otherwise specially provided). For after-admissions the usual entrance fee will be charged unless provided with passes as above.

MEMBERSHIP.

The Members of the Societies uniting, and all subscribers of one dollar and upwards per annum, shall be members for the year, and each member shall be entitled to four admission tickets.

ENTRIES.

All entries of articles and stock intended for exhibition must be made on printed forms (which can be obtained from the Secretary free of charge) filled up and signed by the exhibitor; and if said exhibitor is a member of the City of London or East Middlesex Horticultural and Agricultural Societies, he shall state the same on the entry, and, if not a member, must enclose one dollar for subscription.

The above subscription is all that is necessary to remit with entries up to

SATURDAY, SEPTEMBER 20th.

From September 20th to September 27th, inclusive, 25 cents extra will be charged. For entries made on Monday, 50 cents will be charged. *No entries will be received unless the above rules are complied with.*

Exhibitors are particularly requested to enter only such articles as they intend to exhibit, which will greatly facilitate the work of the office and save unnecessary waste of time.

All entries shall be made in the name of, and signed by the *bona fide* owner, except in the case of duly authorized agents of manufacturers, who may enter for their respective firms by depositing with the Secretary their authority in writing, on or before the 27th of September next.

On entries made for exhibition purposes only, no restrictions are placed as to the name or ownership of exhibitor.

A merchant competing for a prize as agent of the manufacturer, while other merchants in his locality are offering goods purchased from the same manufacturer, cannot be considered as an agent for such goods.

No articles of Work, Manufacture or Fine Arts will be awarded a money prize which have taken first prize at any previous Western Fair, but may show for a diploma.

All articles of Work or Manufacture must be the *bona fide* property

of the e
families

All
must be
and Gra
holding
entry, i

Onl
class, b
and the
apply to

Inte
not cov
Extras,
corresp

Cor
the nam
complir
of adver

The
entry o
will any
combust
destruct
be awar
be decla

Exh
bition v
mistake
change,
section
no comp

No
with, an
claim t
exhibit
Arts Ac

Ex
Richm
out a li
with th
greatly
mistake
instruct
dates w

DE

All
10 a. m
Ex

of the exhibitors, made or worked by themselves or members of their families, or at their expense by regular employees.

All Fruit, Grain, Roots, Vegetables, Seeds, and Dairy Products, must be the growth or production of the present year, except Clover and Grass Seed, and must be the production of the exhibitor's farm or holding, and have the manner of curing or culture set forth in the entry, if required.

Only one prize will be allowed to an exhibitor in one section of a class, but the Judges may report to the Board any articles of merit, and the Directors may grant honorary certificates. This rule does not apply to stock.

Intending exhibitors desiring to enter worthy articles which are not covered by any section of any class, shall enter such articles as Extras, in the last section of the class to which they most nearly correspond.

Contrary to the custom existing heretofore, entry tickets will bear the names of exhibitors, as the Board consider to do otherwise is uncomplimentary to the Judges, and deprives exhibitors of the privilege of advertising, which is one of the main features of the exhibition.

The right is reserved to accept conditionally, or reject entirely, any entry or application that may be received; and under no circumstances will any article be admitted which, by reason of its odor, appearance, combustibility or explosive nature, is offensive, inimical to health or destructive of life and property, and should an exhibitor inadvertently be awarded a premium in contravention of this rule, the same shall be declared forfeited.

Exhibitors desiring corrections made in their entries during exhibition week will be required to subscribe to a declaration that the mistakes or misunderstandings assigned are the sole reasons for the change, and not for the purpose of taking prizes in some other class or section which may happen to be deficient, or in which there is little or no competition.

No premiums will be awarded unless the above rules are complied with, and any violation of the same by an exhibitor will cancel his claim to any prizes which may have been awarded, and the right to exhibit at any future exhibition. (See section 104 of Agriculture and Arts Act of 1877).

Exhibitors making their entries at the office of the Secretary, Richmond Street, or at the grounds, are particularly requested to make out a list, before leaving home, of the articles they intend to enter, with their name and address clearly and legibly written. This will greatly facilitate and expedite the making of entries as well as prevent mistakes, which frequently occur in filling blanks hastily from verbal instructions. The extra charges for all entries made after the specified dates will invariably be collected.

DELIVERY, CARE AND WITHDRAWAL OF ARTICLES, ANIMALS, &c., ON EXHIBITION.

All Articles, Live Stock, Poultry, etc., must be on the grounds by 10 a. m. on Tuesday, the 28th September.

Exceptions to the above rule are when Articles, Animals, etc.,

were shipped and forwarded at the proper time, but by reason of accident or unavoidable delays in transit, or otherwise, it has been impossible to comply with the conditions. In all such cases a declaration will require to be made by the exhibitor or agent to the facts. The form of declaration may be obtained on application to the Superintendent of the Department in which the goods are to be shown, who shall, after the form has been duly signed by the exhibitor, retain the same in his possession till the close of the Exhibition, when they should be handed over to the Secretary.

Articles, Live Stock, etc., exempted by the above rule, and articles for exhibition only, will be admitted not later than 2 p.m. on the 28th September.

All expenses connected with the transportation of Articles, Animals, etc., to or from the grounds, must be borne by the exhibitors.

Articles unaccompanied by their owners will be received by the Superintendent of the Department in which they are to be shown, when delivered on the grounds; but in all such cases the expenses (if any) attending the same must be provided by the exhibitor.

Exhibitors, on arriving with their Articles, etc., will enquire for the Superintendent of the Department where articles are to be shown, when they will be informed where the same are to be placed.

Exhibitors are expected to give all necessary attention to their exhibits while the Fair is being held, and at its close to take full charge of the same.

No articles exhibited will be allowed to be removed from the grounds until the close of the Exhibition, except Live Stock, Agricultural Implements and Machinery (other than machinery contained in any building), which may be removed Friday afternoon at 4 o'clock. All other goods Saturday morning at 7:30 o'clock.

In the perishable classes, Fruit, Flowers and Vegetables, the privilege will be allowed (after the Judges have made their awards) of replacing any articles, which may have deteriorated or wilted, with a new supply.

All reasonable latitude will be allowed exhibitors in the taking of orders and the sale of articles on exhibition; but delivery of any article will not be permitted unless its place can be filled at once by a duplicate.

While the Directors of the Association agree to take every reasonable precaution to ensure the safety of articles sent to the Exhibition, yet it must be distinctly understood that the owners are required to assume all risk of exhibiting, and should an article be accidentally injured, lost or stolen, the Directors will render all the assistance in their power for the recovery of the same, but will not recognize any claim for payment of the value or any portion thereof.

LIVE STOCK.

Good stabling and sheds will be provided for horses, cattle, sheep, and pigs, from Saturday, September 25th, to the close of the Exhibition, and water, and straw for bedding, without charge. Provender will be provided by the Association at cost prices. For information exhibitors will apply to the Superintendent of the Grain and Fodder Department, at his office on the grounds.

The Committee on Live Stock may order the production of any

or all the
at any t
ant refu
pete for
Ami
right of
All
exhibitor
the Judge
No
Associat

Dipl
follows, s

EXPR

The
Grand Tr
at reduc
including
sion train

Arra
ment to
of duty,
only, by

All a
should be
intenden
they will

The
Friday, t
the office

Exhi
their pre
prizes ar
entitled t

The
Richmon
the week
succeedin

Appl
they are
order.

All p

or all the animals within the arena, or horse-ring, for review purposes at any time during the holding of the Fair. Any exhibitor or attendant refusing to comply with such order will forfeit his right to compete for or receive any premium which may have been awarded him.

Animals not ready at the proper time and place will forfeit the right of competition.

All animals in the Live Stock classes must be the property of the exhibitor at least ten days before the Exhibition, and, if required by the Judges, shall produce satisfactory proof of ownership.

No person but the necessary attendants, judges and officers of the Association will be allowed within the horse-ring.

DIPLOMAS AND MEDALS.

Diplomas and Medals will be awarded in lieu of money prizes as follows, subject to approval of the Board of Directors:—

For a first prize—Diploma.

"	"	of \$25 and upwards—	Gold Medal.
"	"	of \$10	—Silver Medal.
"	"	of \$5	—Bronze Medal.

EXPRESS COMPANYS, RAILWAYS & CUSTOMS.

The Association have made favorable arrangements with the Grand Trunk Railway Company for carrying passengers and articles at reduced rates, and from several distant points in the Dominion, including the contiguous portions of the United States, special excursion trains will be run.

Arrangements have also been made with the Customs Department to admit from the United States or other foreign countries, free of duty, all Live Stock or articles intended for exhibition purposes only, by giving the customary bond.

All articles sent by the Express Co. and intended for exhibition should be addressed "For Western Fair," care of the owner or Superintendent of the Department in which they are to be shown, when they will be delivered without extra charge.

PAYMENT OF PRIZES.

The Treasurer will commence the payment of premiums on Friday, the 1st of Oct., at 2 o'clock p.m., also Saturday, the 2nd, at the office of the Association on the grounds.

Exhibitors from a distance are particularly requested to apply for their premiums on the above dates, or before leaving the city, as prizes are payable by cash or cheque to the order of the person entitled to the premium.

The Treasurer will be in attendance at the office of the Association, Richmond St., opposite the City Hall, on Thursday and Saturday of the week following the Fair, for the payment of premiums, and on succeeding Saturdays until Nov. 1st, 1886.

Applicants requesting by letter payment of premiums, to which they are entitled, will be paid by cheque payable in London, to their order.

All persons to whom prizes are awarded, must apply to the Secre-

tary of the Association for payment thereof before the 30th day of November of the year of which such prize is awarded; otherwise all claim to such premium shall be forfeited.

JUDGES.

No person is eligible to act as Judge who is in any way interested in the articles to be examined.

Judges are requested to report themselves on arrival, at the office of the Secretary, presenting circular of appointment, when they will be duly furnished with badges, tickets of admission and class books.

Judges will enter upon their duties on Tuesday, September 28, at 2 o'clock p. m.

The first prize tickets will be red, the second blue, the third yellow. In the absence of competition in any section, or if the stock or articles exhibited be of inferior quality, the Judges are instructed to award only such premium as they think the article deserving of. They will exercise their discretion as to whether they will award the first, second, third, or any premium.

On Articles, Novelties, New Inventions, etc., for which no prizes have been provided in the prize list, the Judges may recommend as awards—"Commended," "Highly Commended," "Diploma," such recommendations in all cases subject to approval and adoption by the Board of Directors.

Judges are *particularly requested* to enter into no argument with exhibitors regarding the merits or demerits of any article examined by them, and on no account to give the reasons upon which they have based their decisions.

The awards and recommendation of the judges must be written in a clear legible hand, and in all cases of doubt, or difficulty, the Judges should consult freely with the Secretary, or the Committee in charge of the department where the articles are being examined.

It is expected that the Judges, in execution of their duties, will act with the most rigid impartiality and take ample time for the fullest inspection and scrutiny of the articles exhibited, so that their decisions may not only reflect credit on themselves but also on the Association which they are representing.

Judges are requested immediately upon the conclusion of their duties to hand in their list of awards so that in cases of doubt or error the same may be rectified. Recommendations and suggestions promotive of the efficiency of a department in any of its parts are solicited, and may be handed in afterwards, at any time before leaving the city.

It shall be the duty of the Judges before leaving the grounds, and also before leaving the city, to ascertain whether there have been any protests filed with the Secretary against their awards in any of the classes they have judged, in order that their explanation may be duly presented to the Board.

Judges are requested to promptly report any interference by exhibitors in reference to the awards they have made, while in the discharge of their duties.

Upon the discovery of any fraud, deception or dishonest practice the Judges shall immediately report the same to the Secretary.

Should animals or articles be shown in a class to which they or it

do not h
or Chair
in which
not alrea
removed

All p
cause of
tary with
the anim
has been
ous natu
made un

An e
prement
Judges w
who shal
because
right to
should th
of exhibi

The
each case
not susta

Judg
ception o
misrepres
affected,
of Direct
which ma
more yea
the name

It sh
affixed by
feiture of

Appl
Buildings
Sept. 25,
prizes or

Whe
fails to m
reserve th

Exhi
granted t
certain r
and shall
Chairman

do not belong, the Judges shall so declare, when the Superintendent or Chairman of the department shall order their removal to the class in which the entry should have been made, providing the Judges have not already completed their work in the class to which they should be removed.

PROTESTS, AND PENALTIES.

All protests or appeals must be in writing, must state plainly the cause of complaint, and shall be delivered to the President or Secretary *within four hours* after the Judges have given their decision upon the animal or article in question. Much annoyance and unpleasantness has been occasioned in the past by protests of an imaginary and frivolous nature. It is therefore earnestly hoped that no appeals will be made unless there exist the strongest grounds for so doing.

An exhibitor has the right to protest or appeal, as provided in the prementioned clause, and is not allowed, therefore to interfere with the Judges while in the discharge of their duties. Exhibitors so interfering, or who shall use any abusive or contemptuous language to any Judge, because of any award which may have been given, shall forfeit his right to any premiums to which he may have been entitled, and should their be no premiums due him he shall be debarred the privilege of exhibiting for two years thereafter.

The sum of two dollars shall be deposited with the Secretary in each case of protest or appeal, the same to be forfeited if the appeal be not sustained.

Judges are instructed to report the discovery of any fraud, deception or dishonest practice either in the preparation, ownership, or misrepresentation of any article or animal exhibited which may have affected, or intended to affect, the decision of the Judges. The Board of Directors have power in all such cases to withhold all premiums which may have been awarded, to exclude from exhibiting for one or more years, and to decide upon the expediency of publishing or not, the names of such persons in the interest of the public good.

It shall be obligatory on exhibitors to display the prize tickets affixed by the Judges. Any one refusing so to do shall incur the forfeiture of his premiums.

SPACE.

Applications for space in the Palace, Horticultural, or other Buildings, may be made at same time as entry, or at any time up to Sept. 25, by persons who intend making special exhibits either for prizes or exhibition purposes.

When an allotment of space has been made to an exhibitor and he fails to make or maintain a creditable display, the Board of Directors reserve the right to declare the space, or any part thereof, forfeited.

Exhibitors desiring the privilege to sell shall have the same granted upon condition of maintaining their display and by paying a certain rental per foot frontage, according to the position occupied, and shall receive a receipt therefor signed by the Treasurer and the Chairman of the department in which the goods are shown.

MALICIOUS DESTRUCTION OF PROPERTY.

Any person who wilfully or maliciously injures or destroys any property within the fair grounds, or who shall interfere with or hinder or obstruct the officers or servants of the Association, or any policeman or constable in the discharge of his or their duty, or gains admission to the grounds in a surreptitious manner, and contrary to the rules of the Association, will be prosecuted as the law directs.

FIRE AND POLICE PROTECTION.

The Western Fair Grounds, being situated nearly in the centre of the city, within eight minutes' walk of the Central Fire Station, connected by telephone, and with a detachment of police and constables on duty night and day, as well as a corps of watchmen, the risk and probability of fire is reduced almost to a minimum. Notwithstanding all these precautions the Association WILL NOT HOLD THEMSELVES RESPONSIBLE FOR ANY LOSS OR DAMAGE BY FIRE, THEFT, OR OTHERWISE, and should exhibitors require their exhibits covered by insurance, they are required to give the matter their own personal attention.

INQUIRIES.

Communications and enquiries pertaining to the exhibition and its arrangements should be addressed to the Secretary, Geo. McBroom, London, Ont. Persons desiring to make enquiries in person will find the office of the Association in the Victoria Buildings, Richmond St., 2nd floor, opposite the City Hall.

THE PRESS.

A cordial invitation is extended to the members of the Press to visit the Western Fair. Any information wanted will be promptly furnished. Editors are requested to advise the Secretary two or three weeks prior to the Fair how many representatives will be on duty, in order that tickets of admission will be forwarded.

TELEGRAPH, TELEPHONE & POST OFFICES.

The Great North-West Telegraph Co., and Bell Telephone Co., will have offices on the grounds, as also the Post Office Department. Mails will be received and delivered twice each day.

ACCOMMODATION FOR VISITORS ON THE GROUNDS.

Visitors at the Fair will find all necessary accommodation and conveniences on the grounds. Meals, lunch and refreshments will be served by the proprietors of booths and stands at reasonable rates.

Rooms will be provided under the care of responsible parties for the deposit of valises, satchels, cloaks, etc., for which a small charge will be made and checks given.

In n
of access
take the
almost in
for the S
minutes

The
Friday, C
The
every off

RICH

Inten
as possibl
pany the

Parti
with sam

HOW TO REACH THE GROUNDS.

In no other place in Canada are the Exhibition Grounds so easy of access as are those of the Western Fair. Ten minutes' walk will take the visitor from the station to the grounds, which are situated almost in the heart of the city. Richmond St. is the connecting link for the Street Railway Co.'s cars, which will be running every few minutes from the station to the grounds.

GENERAL ARRANGEMENTS.

The Fair will commence on Monday, Sept. 27th and close on Friday, Oct. 1st, at 6 p.m.

The gates will open at 7 o'clock a.m. of each day, and at that time every officer is required to be at his post.

RICHD. WHETTER, GEO. McBROOM,

President.

Secretary.

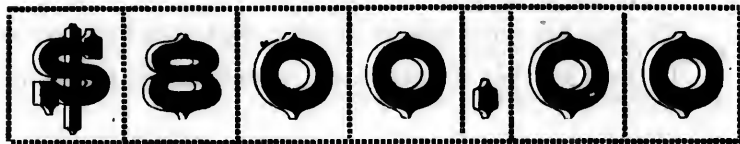
Intending exhibitors are requested to send in their entries as soon as possible after the receipt of the Prize List. All fees should accompany the entry.

Parties receiving Prize Lists are requested, as soon as through with same, to pass them around among their neighbors.

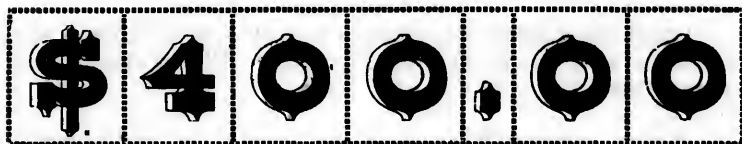
SPECIAL ATTRACTIONS !

At the time of going to press, the Attraction Committee have been unable to complete a list of Attractions for the Fair Week

THE SUM OF



Has been voted by the Board for Special Attractions, which sum will be further augmented by special prizes from the citizens to about



The Committee are determined to make the Attractions for 1886 eclipse those of any preceding Western Fair. A complete programme will be published later on, and also due notice given in the newspapers.

Our Grounds *and* Buildings for 1886.

Owing to the City Council disposing of a portion of the old Exhibition Grounds, the Western Fair Association made application to the Dominion Government for the use of the Military Grounds and Buildings, and have been granted permission to use same. The said grounds are separated from the Fair Grounds by Central Avenue, but by permission of the City Council a portion of the street will be closed during the week of the Fair, which will place the Association in a position to make the Exhibition of 1886 as eminently successful as any in the past.

Com

Class 1-

" 2-

" 3-

" 4-

" 5-

" 6-

" 7-

" 8-

" 9-

" 10-

" 11-

" 12-

" 13-

" 14-

" 15-

" 16-

" 17-

" 18-

" 19-

" 20-

" 21-

" 22-

" 23-

" 24-

" 25-

" 26-

" 27-

" 28-

" 29-

" 30-

" 31-

" 32-

" 33-

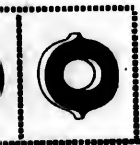
" 34-

" 35-

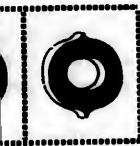
" 36-

ONS!

Committee have
Fair Week



, which sum
from



Attractions for
A complete
notice given in

1886.

of the old
application
ary Grounds
same. The
by Central
of the street
will place the
of 1886 as

PRIZE LIST FOR 1886.

Competition Open to the World.

CLASSIFICATION.

- | | |
|---|--|
| <p>Class 1—Blood Horses.
" 2—Carriage Horses.
" 3—Roadsters.
" 4—Agricultural Horses.
" 5—Heavy Draught Horses.
" 6—Norman Percherons.
" 7—Durhams, Imported and Canadian bred.
" 8—Herefords.
" 9—Ayrshires.
" 10—Jerseys, Guernseys, or Alderneys.
" 11—Holsteins.
" 12—Polled Angus & Galloways.
" 13—Grade Cattle.
" 14—Fat and Working Cattle, any breed.
" 15—Sheep, Cotswold.
" 16— " Leicesters.
" 17— " Lincolns.
" 18— " Southdowns.
" 19— " Shropshire Downs.
" 20— " Fat.
" 21—Pigs, Suffolks.
" 22— " Improved Berkshires.
" 23—Fowls.
" 24—Chickens of 1886.
" 25—Turkeys, Ducks, Geese, Pigeons, etc.
" 26—Grain, Small Field Seeds, Hops, etc.
" 27—Roots, other Hoed Field Crops, Flax, etc.
" 28—Garden Vegetables.
" 29—Fruit, Apples.
" 30—Fruit, Pears, Plums and Peaches.
" 31—Fruit, Grapes, Melons, Dried Fruit, Collections, etc.
" 32—Plants and Flowers in Pots, Vases, etc.
" 33—Cut Flowers, Bouquets, Floral Designs, etc.
" 34—Cheese, Butter, Bacon, Canned Fruits, etc.
" 35—Bees, Honey and Apiary Supplies.
" 36—Agricultural Implements and Machines for exhibition only.</p> | <p>Class 37—Agricultural Implements worked by horse, steam, or water power.
" 38—Agricultural Tools and Implements for hand use.
" 39—Machinery Castings and Tools.
" 40—Metal Work (miscellaneous)
" 41—Woollen, Flax, and Cotton Goods, Furs and Wearing Apparel, Factory-made Goods.
" 42—Domestic Woollens from Home-spun Yarn, strictly home made.
" 43—Saddlers', Trunkmakers' Work, etc.
" 44—Shoe & Bootmakers' work.
" 45—Leather.
" 46—Cabinet Ware and other Wooden and Hair Manufactures.
" 47—Sewing Machines and Musical Instruments for Exhibition only.
" 48—Chemical Manufacturers' Preparations.
" 49—Drawings, Architectural & Mechanical Engravings, Paper, Printing, Book-binding, etc.
" 50—Building Materials and Constructions, Marble, Stone-work, Pottery, etc.
" 51—Natural History.
" 52—Fine Arts—Professional List, Oil (originals).
" 53—Fine Arts—Amateur List Oil (original).
" 54—Fine Arts—Amateur (School of Art and Design)
" 55—Ladies' Department—Bead Work, Painting, Embroidery, Lace Work, Knitting, etc.
" 56—Flowers, Hair, Shell and Wax Work, etc.</p> |
|---|--|

PRIZE LIST.

LIVE STOCK DEPARTMENT.

Competition open to the World except in cases otherwise noted.

HORSES.

In addition to the membership fee (\$1.00), entries made after Sept. 20th to Sept. 27th, inclusive, 25c. extra will be charged, and 50c. extra for entries made on Monday of the Fair Week.

Stabling \$1.00 single stall, \$1.50 double stall - in all cases to accompany the entry.

No horse or mare will be allowed to compete in more than one class or section, except when competing for the Diploma for the best horse or mare of any age, in his or her class, or in exhibition of speed in the ring. This clause applies to all classes from one to six inclusive.

Brood mares with foal by side and young stock will be judged in the forenoon, in classes one to ten inclusive.

The ages of horses and foals will be reckoned to 1st of Jan., 1886. All foals will be considered one year old on the 1st of Jan. after birth.

The breeder's name, if known, the owner's name and address, the name of animal and the age, should accompany all entries.

Evidence must be adduced of all Brood animals exhibited having had Stock within the past twelve months, unless they are evidently with young.

All male animals shall have the privilege of showing for diploma in their respective classes, without additional entries.

No horse shall be eligible for a premium unless sound, except in the case of stallions and brood mares injured by accident; which do not lessen their usefulness.

Exhibitors have the option to show their horses in harness, to bridle, or under saddle; but must be uncovered and in such manner as the Judges shall require. Exhibitors refusing to comply with the proper requirements of the Judges will forfeit the right to compete.

Exhibitors desirous of taking their horses home at night will be granted the privilege by depositing with the Superintendent \$5.00 as a guarantee of the return of the animal the next morning. If the horse is not returned at 10 a.m. of the next day the guarantee deposit will be forfeited.

Exhibitors, on application at the office of the Superintendent of the grounds, Geo. Douglass, Esq., and on deposit of 25c., will receive a numbered lock and key corresponding with the number of the stable, which will be duly returned at the close of the Exhibition on receipt of the lock and key in good order.

All horses must be the property of the exhibitor at least ten days before

The
full prog
advances
and han

Sec.
horses w
and driv
Entranc
Sec.
won pub
or farmer
\$20. 2

Sec.
consider
1st, \$50.
Sec.
Entranc
Sec.
no race.
Sec.
over 11
offered j
Esq., Pr
Dr. J. H
Sec.
Middle
peting h
ring.

Sec.
Twice an
never oo
Sec.
Open on
around t
Sec.
\$8. 2nd
Prop. H
Prop. E
Sec.
not to
Birrell &
Sec.
consider
Medal.
Sec.
Entranc

Sec.
Open to
2nd, \$20
Sec.

PROGRAMME.

SPECIAL ATTRACTIONS.

The Committee on Attractions have been unable at this date to present a full programme. The subjoined list will be further augmented as the season advances, and when completed will be given to the public through the press and hand bills, etc.

CLASS A.

TUESDAY.

Sec. 1—**FARMERS' TROTting MATCH TO HARNESS**—For horses which have never won public money or been on a public track. Owned and driven by farmers or farmers' sons, residing on their farm. Best 3 in 5. Entrance fee, \$1. 1st, \$20. 2nd, \$12. 3rd, \$8.

Sec. 2—**FARMERS' RUNNING RACE**—For horses which have never won public money or been on public track. Owned and ridden by farmers or farmers' sons, residing on their farm. Best 3 in 5. Entrance fee, \$1. 1st, \$20. 2nd, \$12. 3rd, \$8.

CLASS B.

WEDNESDAY

Sec. 1—**SINGLE ROADSTER**—Open to all. Style, Speed, and Value considered. Twice around the ring, in harness. Best 3 in 5. Entrance, \$5. 1st, \$50. 2nd, \$30. 3rd, \$20.

Sec. 2—**RUNNING**—Open to all. Twice around the Ring. Best 3 in 5. Entrance, \$5. 1st, \$40. 2nd, \$20. 3rd, \$10.

Sec. 3—**DONKEY RACE**—Twice around the Ring. Three to start or no race. No rider to ride his own donkey. 1st, 10. 2nd, \$6. 3rd, \$4.

Sec. 4—**BOY RIDERS**—Best boy rider under 14 years of age on pony over 11 and under 13 hands high. Prizes, \$10, \$6, \$4. These prizes are offered jointly by James Smith, Esq., Albion Restaurant; John R. Gosling, Esq., Prop. McFarlane's Hotel; John Fraser, Esq., Prop. Central House; and Dr. J. H. Gardiner, city.

Sec. 5—**FOR THE BEST WALKING FARM TEAMS**—The Middlesex Agricultural Council offer 1st prize of \$15; 2nd, \$10. The competing horses must be either General Purpose or Heavy Draft. Once round the ring.

CLASS C.

THURSDAY.

Sec. 1—**PAIR ROADSTERS**—Style, Speed and Value considered, Twice around the ring in harness. Best 3 in 5. Open only to horses that have never competed for public money. Entrance, \$5. 1st, \$40. 2nd, \$20. 3rd, 10.

Sec. 2—**BOYS' RACE**—To be ridden by boys under 14 years of age. Open only to horses that have never competed for public money. Twice around the ring. Entrance free. 1st, \$8. 2nd, \$4.

Sec. 3—**FOR BEST SHETLAND PONY IN HARNESS**—1st, \$8. 2nd, \$6. 3rd, \$4. These prizes are offered jointly by John Lewis, Esq., Prop. Huron Hotel; Thos. Morkin, Esq., Morkin's Hotel; Lewis Risk, Esq., Prop. Exhibition Hotel; Geo. Lumby, Esq., Hotel, King street, city.

Sec. 4—**FOR BEST GIRL RIDER**, under 15 years of age, on pony not to exceed 14 hands in height. Silver Medal offered by Messrs. John Birrell & Co., wholesale dry goods, city.

Sec. 5—**FOR BEST SINGLE TURNOUT**—Style, Speed and Value considered, owned and driven by owner. 1st, Gold Medal. 2nd, Silver Medal.

Sec. 6—**TROTting MATCH**—Twice around the ring. Best 3 in 5. Entrance \$5. 1st, \$40. 2nd, \$15. 3rd, \$10.

CLASS D.

FRIDAY.

Sec. 1—**HURDLE LEAPING**—Over four hurdles, 3 feet 6 inches high. Open to all. Twice around the Ring. Best 2 in 3. Entrance free. 1st, \$30. 2nd, \$20.

Sec. 2—**LADY RIDERS**—Not less than three competitors. 1st,

Lady's Gold Brooch, valued at \$20, offered by John F. Warner, "the old jewelry stand," 421 and 423 Richmond street. 2nd, \$10 or Gold Medal, offered by Samuel Grigg, Esq., proprietor of the Grigg House, London. 3rd, a Silver Mounted Driving Whip, offered by F. C. Wheeler, hardware merchant, 112 Dundas street, London.

Sec. 3—**BEST AND MOST APPROPRIATELY DRESSED LADY RIDER**—Prize, Dress, value \$5, offered by Messrs. R. J. Young & Co., dry goods merchants, 142 Dundas street, London.

Sec. 4—**LADY DRIVERS**—For Single Roadster. Style, Speed and Value considered. Twice around the Ring, in harness. Best 2 in 3. Open to horses only that have never competed for public money. 1st, Handsome Gold Medal; value \$20, offered by Messrs. A. S. Murray & Co, watchmakers, jewelers and opticians, 419 Richmond street, city. 2nd, \$10 by Messrs. McGaw, Winnett & Moore, Tecumseh House, London. 3rd, Pickle Stand, value \$4, offered by Thos. Gillean, jeweler, etc., 394 Richmond street London.

Sec. 5—**SADDLE HORSES**—Open to members of the London Hunt Club only, the *bona fide* property of, and that have been regularly hunted by members of the London Hunt during the season of 1885-6, catch weights, minimum weight 160 lbs. Four times round the horse ring over eight hurdles. To be ridden by the owner in hunting costume. Entrance free. Prize, English Hunting Saddle, offered by Col. F. B. Leys.

Sec. 6—**BEST LADY RIDER OVER HURDLES**—Style, Speed, Value considered. Three times around the ring. Prize, Gold Medal, offered by John Cruikshank, Esq., proprietor American House, London. Not less than three to compete

Sec. 7—**RUNNING RACE**—Free to all. Best 3 in 5. Entrance free. 1st, \$20. 2nd, \$12. 3rd, \$5. The third prize is given by J. James of the Western Hotel.

SPECIAL PRIZES

Offered by Prominent Citizens and others, to be Competed for at the Western Fair of 1886.

Class 34, Sec. 50—Messrs. John H. Chapman & Co., drygoods merchants, Dundas St., offer suit of clothes, value \$10, for best firkin of Butter not less than 30 lbs.

Class 53, Sec. 43—D. W. Blackwell, Esq., Furniture Dealer and Upholsterer, 121 Dundas St., offer an Easy Chair, value \$7, for best oil painting by lady amateur.

Class 34, Sec. 51—Messrs. W. H. & C. R. Smith, Hardware Merchants, 151 Dundas St., offer 1 pair Brass Window Poles, Rings, ends and pins, value \$4, for best 10 lbs. roll butter.

Class 34, Sec. 52—The Star Clothing Hall, 420 Richmond St., offer Suit of Clothes, value \$10, for best basket butter, 1 lb. prints or rolls, 20 lbs.

Class 28, Sec. 37—Messrs. John S. Pearce & Co., Seed Merchants and Importers, London, offer the first prize in Class 28, Sec. 37, \$5, "Greatest variety of Vegetables."

Class 27, Sec. 11½—For one bushel of largest Potatoes of any variety, one pair Mammoth Bronze Turkeys, value \$6, offered by Geo. Nixon, Esq., Hyde Park, Ont.

Class 27, Sec. 21½—For the best and largest collection of Field Roots, etc. (Mangels, Turnips, Carrots, Squashes, Pumpkins, Field Corn, etc., 3 each) \$5, offered by Geo. Nixon, Esq., Hyde Park, Ont.

Class 14, Sec. 6—Messrs. J. & J. McMartin, City Hotel, offer \$20 or Gold Medal for the best Fat Ox, Steer, Cow, or Heifer on the ground over two years, any breed.

Class 5, Sec. 11—J. W. Martin, Esq., prop. Martin House, offers Gold Medal for the best 3-year-old Filly in the heavy-draught class.

Class 2, Sec. 12—For the best 3-year-old Filly in the carriage class, Gold Medal, offered by the Western Fair Association.

Class 20½, Sec. 1—Messrs. Boake, Judd & Stringer, agents of the Massey Mngf Co., 143 King St., offer one of Cookshut's Iron Corn Scufflers, value \$12, for best Ram, aged Ewe, Shearling Ewe and Ewe Lamb, any age or breed.

Class 5, Sec. 11—Messrs. Geary Bros., London, offer for best yearling colt or filly, sired by Lord Warwick, 1st, \$6; 2nd, \$4; and best sucking colt by same horse, 1st, \$6; 2nd, \$4.

the exhibit
Judges so
All h
while bei
the past
several d
privilege
shall have
manifestly
declared f

Sec.
1 Thor
2 Three
3 Two-
4 Thor
5 Brood
6 Brood
7 Two-
8 One-y
9 Foal

Sec.
1 Carria
2 Carria
3 Carria
4 Stalli
5 Brood
6 Two y
7 Yearl
8 Foal
9 Pair o
10 Single
11 Best M

Sec.
1 Stallio
2 Stallio
3 Stallio
4 Stallio
5 Brood
6 Two-y
7 Yearlin
8 Foal
9 Pair of
10 Single
11 Saddle
12 Best M

the exhibition, and satisfactory proof of ownership must be produced if the Judges so require.

All horses entered for exhibition purposes shall only be ridden or driven while being exhibited and in the ring, much inconvenience having been felt in the past from the fact that numbers of horses have been entered in their several departments for the purpose of obtaining cheap stabling and the privilege of driving about the grounds. In future the Committee on Horses shall have the power to exclude from the grounds any such animals as are manifestly unworthy of entering for competition, and the entry money be declared forfeited.

Class 1—Blood Horses.

Certified pedigree must be produced when horses enter ring.

Sec.		1st	2nd
1	Thoroughbred Stallion, four years old and upwards	\$20	\$12
2	Three-year-old Stallion	15	8
3	Two-year-old Stallion	8	5
4	Thoroughbred Stallion, any age	DIPLOMA	
5	Brood Mare, any age	DIPLOMA	
6	Brood Mare, with foal by side	10	6
7	Two-year-old Gelding or Filly	7	5
8	One-year-old Gelding or Filly	5	3
9	Foal	4	2

Class 2—Carriage Horses.

Sec.		1st	2nd	3rd
1	Carriage Stallion, four years old and upwards	\$20	\$12	\$6
2	Carriage Stallion, three years old	15	10	5
3	Carriage Stallion, two years old	10	6	4
4	Stallion of any age	DIPLOMA		
5	Brood Mare, with foal by side	10	6	4
6	Two year-old Gelding or Filly	8	5	3
7	Yearling Gelding or Filly	6	4	3
8	Foal	5	3	2
9	Pair of matched Carriage Horses (Geldings or Mares) in harness	25	15	10
10	Single Carriage Horse (Gelding or Mare) in harness, 15½ hands and over	10	6	4
11	Best Mare, any age	DIPLOMA.		

Class 3—Roadsters.

Sec.		1st.	2nd.	3rd.
1	Stallion in harness, four years old and upwards	\$20	\$12	\$6
2	Stallion, three years old	15	10	5
3	Stallion, two years old	10	6	4
4	Stallion of any age	DIPLOMA		
5	Brood Mare, with foal by side	10	6	4
6	Two-year-old Gelding or Filly	8	5	3
7	Yearling Gelding or Filly	6	4	2
8	Foal	5	3	2
9	Pair of Roadsters (Geldings or Mares) in harness	25	15	10
10	Single Roadsters (Geldings or Mares) in harness	10	6	
11	Saddle Horse (Gelding or Mare)	6	4	
12	Best Mare, any age	DIPLOMA.		

Class 4—Agricultural Horses.

Exclusive of pure Clydesdales and Norman Percherons.

Sec.		1st.	2nd.	3rd.
1	Stallion, four years old and upwards	\$20	\$12	\$6
2	Three-year-old Stallion	15	10	5
3	Two-year-old Stallion	10	6	4
4	Stallion of any age	DIPLOMA.		
5	Brood Mare, with foal by side	10	6	4
6	Two-year-old Gelding or Filly	8	5	3
7	Yearling Gelding or Filly	6	4	2
8	Foal	5	3	2
9	Best Team (Geldings or Mares) in harness	15	10	5
10	Best Mare of any age	DIPLOMA.		

Class 5—Heavy Draught Horses.

Sections 3 to 12 includes Clydesdales and Shire bred.

Sec.		1st.	2nd.	3rd.
1	Heavy Draught Stallion, four year old and upwards, Clydesdale	\$25	\$15	\$10
2	Heavy Draught Stallion, four years old and upwards, English Shire or Cart horse	25	15	10
3	Three-year-old Stallion	15	10	5
4	Two-year-old Stallion	10	6	4
5	Draught Stallion, any age	DIPLOMA.		
6	Brood Mare, with foal by side	10	6	4
7	Two-year-old Gelding or Filly	8	5	3
8	Yearling Gelding or Filly	6	4	2
9	Foal	5	3	2
10	Best Mare, any age	DIPLOMA.		

Class 6—Norman Percherons.

(Imported and bred from pure imported stock.)

Sec.		1st	2nd.	3rd.
1	Stallion, three years old and upwards	\$25	\$15	\$10
2	Stallion, two years old	10	6	
3	Stallion, any age	DIPLOMA.		
4	Brood Mare, any age	DIPLOMA.		
5	Brood Mare, with foal by her side	10	6	
6	Two-year-old Filly	8	5	
7	One-year-old Filly	5	3	
8	Best Foal, 1886	4	3	
9	Matched Team (Geldings or Mares) in harness	15	10	

CATTLE.

In addition to the membership fee of \$1.00, entries made after Sept. 20th and up to Sept. 27th, 25c. extra. Entries made Monday of the Fair week, 50c. extra.

In all cases the precise age, breeder's name, if known, owner's name and address in full, must be given.

All cattle must have been the property of the exhibitor for at least ten

days be
must be
Au
she has
had a c
Cow
gone in
Bre
months.
Bul
prevent
No
Diploma
All
or attend
clai n to

Cl

No
be first i
Sec.
1 Bull
2 Bull
3 Bull
4 Bull
5 Bull
6 Cow
7 Thre
8 Two
9 One
10 Heif
11 Best

.No a
be first i
Books.
Sec.
1 Bull,
2 Bull,
3 Bull,
4 Bull
5 Bull
6 Cow
7 Cow,
8 Two
9 One-
10 Heifa
11 Best

No ar
be first in
Books.

days before the opening of the exhibition, and satisfactory proof of ownership must be furnished, should the judges so require.

An animal will not be allowed to compete as a three-year-old cow unless she has had a calf or is evidently in calf; but a two-year-old animal having had a calf will be allowed to compete as a two-year-old heifer.

Cows must be giving milk at the time of the Fair, or be evidently well gone in calf.

Breeding cows must have produced a living calf within the last past 15 months.

Bulls must have a ring in their nose or be otherwise properly secured, to prevent accident.

No animal shall compete in more than one class or section, except for Diplomas or Herd Prizes.

All animals will be shown in their arena, or in the horse ring. Owners or attendants must be prepared to bring them out when called for, or forfeit claim to any premiums awarded.

1st.	2nd.	3rd.
20	\$12	\$6
15	10	5
10	6	4
DIPLOMA.		
10	6	4
8	5	3
6	4	2
5	3	2
15	10	5
DIPLOMA.		

Class 7—Durhams, Imported and Canadian Bred.

No animal can be entered for competition unless the pedigree of the same be first inserted in the English, American, or Dominion Herd Books.

1st.	2nd.	3rd.
25	\$15	\$10
25	15	10
15	10	5
10	6	4
DIPLOMA.		
10	6	4
8	5	3
6	4	2
5	3	2
DIPLOMA.		

Sec.	1st.	2nd.	3rd.
1	Bull, three years old and upwards	\$20	\$15 \$10
2	Bull, two years old	20	15 10
3	Bull, one year old	15	10 5
4	Bull Calf, under one year	10	6 4
5	Bull of any age	DIPLOMA.	
6	Cow	15	10 5
7	Three-year-old Cow	15	10 5
8	Two-year-old Heifer	10	6 4
9	One-year-old Heifer	8	5 3
10	Heifer Calf, under one year	6	4 2
11	Best Herd, consisting of a Bull and 5 females	DIPLOMA.	

Class 8—Herefords.

No animal can be entered for competition unless the pedigree of the same be first inserted in the English, American, or either of the Canadian Herd Books.

1st.	2nd.	3rd.
25	\$15	\$10
10	6	
DIPLOMA.		
10	6	
8	5	
5	3	
4	3	
15	10	

Sec.	1st.	2nd.	
1	Bull, three years old and upwards	\$20 \$15	
2	Bull, two years old	20 15	
3	Bull, one year old	15 10	
4	Bull Calf, under one year	10 6	
5	Bull of any age	DIPLOMA	
6	Cow	15 10	
7	Cow, three years old	15 10	
8	Two-year-old Heifer	10 6	
9	One-year-old Heifer	8 5	
10	Heifer Calf, under one year	6 4	
11	Best Herd, consisting of a Bull and 5 females	DIPLOMA	

Class 9—Ayrshires.

No animal can be entered for competition unless the pedigree of the same be first inserted in either Scottish, American, or Dominion Ayrshire Herd Books.

After Sept. 20th of the Fair week, the exhibitor's name and number must be on the animal at least ten

Sec.		1st.	2nd.
1	Two-year-old Bull	\$12	\$8
2	One-year-old Bull	8	5
3	Bull Calf, under one year	5	3
4	Bull of any age	DIPLOMA	
5	Three-year-old Cow	10	6
6	Two-year-old Heifer	7	5
7	One-year-old Heifer	5	3
8	Heifer Calf, under one year	4	2
9	Best Herd, consisting of a Bull and 5 females	DIPLOMA	

Class 10—Jerseys, Guernseys, Alderneys.

Jerseys must be entered in any of the Jersey Herd Books.

Sec.		1st.	2nd.
1	Two-year-old Bull	\$12	\$ 8
2	One-year-old Bull	8	5
3	Bull calf, under one year	5	3
4	Bull of any age	DIPLOMA	
5	Cow, three years old and upwards	10	6
6	Two-year-old Heifer	7	5
7	One-year-old Heifer	5	3
8	Heifer Calf, under one year	4	2
9	Best Herd, consisting of a Bull and 5 females	DIPLOMA	

Class 11—Holsteins.

Pedigrees to be produced if required by the Judge.

Sec.		1st.	2nd.
1	Bull, two years old and upwards	\$12	\$ 8
2	Bull, one year old	8	5
3	Bull Calf	5	3
4	Bull of any age	DIPLOMA	
5	Cow, three years old and upwards	10	6
6	Heifer, two years old	7	5
7	Heifer, one year old	5	3
8	Heifer Calf	4	2
9	Herd, one Bull and 5 females	DIPLOMA	

Class 12—Polled Angus and Galloways.

No animal can be entered for competition unless the pedigree be first inserted in the Scottish, North American Galloway, or Canadian Polled Angus Herd Books.

Sec.		1st.	2nd.
1	Bull, three years old and upwards	\$20	\$15
2	Bull, two years old	20	15
3	Bull, one year old	15	10
4	Bull Calf, under one year	10	6
5	Bull of any age	DIPLOMA	
6	Cow	15	10
7	Cow, three years old	15	10
8	Two-year-old Heifer	10	6
9	One-year-old Heifer	8	5
10	Best Herd, consisting of a Bull and 5 females	DIPLOMA	

are a
Sec.
1
2
3
4
5
6
7
8
9

Sec.
1 C
2 C
3 C
4 C
5 F

I
and u
Fair V
T
of ani
E
have
be sta
S
J
blood

Sec.
1 R
2 S
3 R
4 O
5 O
6 O
7 O

Class 13—Grade Cattle.

In this Class so much of pedigree must be given as to show that the animals are at least half-bred.

Sec.		1st.	2nd.	3rd.
1	Cow, four years or over	\$12	\$8	\$4
2	Three-year-old Cow.....	12	8	4
3	Two-year-old Heifer	8	6	4
4	One-year-old Heifer	6	4	2
5	Heifer Calf, under one year.....	5	3	2
6	Pair three-year-old Steers	12	8	4
7	Pair two-year-old Steers	10	6	4
8	Pair yearling Steers	8	5	3
9	Best Herd of 5 Cows for dairy purposes, to be giving milk at time of show, not to be shown in sections 1 or 2 ..	DIPLOMA		

Class 14—Fat or Working Cattle, any Breed.

Sec.		1st.	2nd.	3rd.
1	Ox or Steer, four years and over	\$15	\$10	\$5
2	Ox or Steer, under four years	15	10	5
3	Cow four years or over.....	15	10	5
4	Cow or Heifer, under four years	15	10	5
5	Best three Steers for Shipping purposes, not to compete for any other prize	15	10	

SHEEP.

In addition to the membership fee of \$1.00, entries made after Sept. 20th, and up to Sept, 27th, 25c. extra will be charged. Entries made Monday of the Fair Week, 50c. extra.

The breeder's name and owner's name and address in full, with precise age of animal must be given when making entries.

Ewes, two shears and over, in all the classes except the Fat Sheep must have raised lambs the present season, and the fact of their having done so must be stated in the entry certificate.

Sheep that have shown in any other class cannot compete as Fat Sheep.

Judges are expected in making awards to be guided more by the purity of blood than size of sheep and quantity of wool.

Long-Woolled.

Class 15.—Cotswolds.

Sec.		1st.	2nd.	3rd.
1	Ram, two shears and over ..	\$8	\$6	\$4
2	Shearling Ram	8	6	4
3	Ram Lamb	8	6	4
4	One Ewe, two shears and over	8	6	4
5	One Shearling Ewe	8	6	4
6	One Ewe Lamb	8	6	4
7	One Ram, 1 Aged Ewe, 1 Shearling Ewe and 1 Ewe Lamb	DIPLOMA		

1st.	2nd.
\$12	\$8
8	5
5	3
DIPLOMA	
10	6
7	5
5	3
4	2
DIPLOMA	

1st.	2nd.
\$12	\$8
8	5
5	3
DIPLOMA	
10	6
7	5
5	3
4	2
DIPLOMA	

1st.	2nd.
\$12	\$8
8	5
5	3
DIPLOMA	
10	6
7	5
5	3
4	2
DIPLOMA	

agree be first in Polled Angus

1st.	2nd.
\$20	\$15
20	15
15	10
10	6
DIPLOMA	
15	10
15	10
10	6
8	5
DIPLOMA	

Class 16.—Leicesters.

Sec.		1st.	2nd.	3rd.
1	Ram, two shears and over	\$8	\$6	\$4
2	Shearling Ram	8	6	4
3	Ram Lamb	8	6	4
4	One Ewe, two shears and over	8	6	4
5	One Shearling Ewe	8	6	4
6	One Ewe Lamb	8	6	4
7	One Ram, 1 Aged Ewe, 1 Shearling Ewe and 1 Ewe Lamb	DIPLOMA		

Class 17—Lincolns.

Sec.		1st.	2nd.	3rd.
1	Ram, two shears and over	\$8	\$6	\$4
2	Shearling Ram	8	6	4
3	Ram Lamb	8	6	4
4	One Ewe, two shears and over	8	6	4
5	One Shearling Ewe	8	6	4
6	One Ewe Lamb	8	6	4
7	One Ram, 1 Aged Ewe, 1 Shearling Ewe and 1 Ewe Lamb	DIPLOMA		

Medium Woolled.

Class 18—Southdowns.

Sec.		1st.	2nd.	3rd.
1	Ram, two shears and over	\$8	\$6	\$4
2	Shearling Ram	8	6	4
3	Ram Lamb	8	6	4
4	One Ewe, two shears and over ..	8	6	4
5	One Shearling Ewe	8	6	4
6	One Ewe Lamb	8	6	4
7	One Ram, 1 Aged Ewe, 1 Shearling Ewe and 1 Ewe Lamb	DIPLOMA		

Class 19—Shropshire Downs.

Sec.		1st.	2nd.	3rd.
1	Ram, two shears and over	\$8	\$6	\$4
2	Shearling Ram	8	6	4
3	Ram Lamb	8	6	4
4	One Ewe, two shears and over ..	8	6	4
5	One Shearling Ewe	8	6	4
6	One Ewe Lamb	8	6	4
7	One Ram, 1 Aged Ewe, 1 Shearling Ewe and 1 Ewe Lamb	DIPLOMA		

Class 20—Fat Sheep.

Sec.		1st.	2nd.	3rd.
1	Two Fat Wethers, two shears and over	\$ 8	\$6	\$4
2	Two Fat Ewes, two shears and over	8	6	4
3	Best six Wethers for shipping purposes, not to be shown in Section 1.....	10	5	

PIGS.

Entries made after Sept. 20th, and up to Sept. 27th, 25c. extra. Entries made Monday of the Fair Week, 50c. extra.

The age of a Bre This ru
 Sec. 1 Bo 2 Bo 3 Bre 4 Sow 5 Sow 6 Bo
 Sec. 1 Bo 2 Bo 3 Bre 4 Sow 5 Bea 6 Sow 7 Bo
 In a 20th, a Monday E.L the chic have con Wit shown in Pou but will The Exh the coop The The he B

The breeder's name, and owner's name and address in full, with precise age of animal, must be given when making entries.

Breeding sows must show evidence of having had or being with young. This rule is imperative in all cases.

Small Breeds.

Class 21—Suffolks.

Sec.	1st.	2nd.	3rd
1 Boar, one year and over	\$8	\$6	\$4
2 Boar, under one year	8	6	4
3 Breeding Sow, one year and over	8	6	4
4 Sow, under one year	8	6	4
5 Sow, any age	DIPLOMA.		
6 Boar, any age	DIPLOMA.		

Class 22—Improved Berkshire.

Sec.	1st.	2nd.	3rd
1 Boar one year and over	\$8	\$6	\$4
2 Boar, under one year	8	6	4
3 Breeding Sow, one year and over	8	6	4
4 Sow, six months to one year	8	6	4
5 Best Boar and two Sows, any age	8		
6 Sow, any age	DIPLOMA.		
7 Boar, any age	DIPLOMA.		

POULTRY DEPARTMENT.

ENTRANCE FEE FOR EACH ENTRY (ONE PAIR) 25c.

In addition to the membership fee of one dollar, entries made after Sept. 20th, and up to Sept. 27th, 25c. extra will be charged. Entries made on Monday of the Fair week, 50c. extra.

Exhibitors must be careful to enter fowls in the fowls' class, and chicks in the chick's class. If wrongly entered they will be ruled out, if the Judges have completed their duties in the class to which they belong.

With the exception of Games and Game Bantams, all poultry must be shown in their natural condition.

Poultry showing symptoms of disease will be excluded from the exhibition, but will be properly cared for by the Association.

The vitality of all eggs laid during the Exhibition shall be destroyed.

Exhibitors desiring to dispose of their stock may attach a price card to the coop.

The Association will provide coops for all the classes except Pigeons.

The care and feed of the Poultry will be provided by and at the expense of the Board.

1st. 2nd. 3rd.
\$8 \$6 \$4
8 6 4
8 6 4
8 6 4
8 6 4
8 6 4
8 6 4
DIPLOMA

1st. 2nd. 3rd.
\$8 \$6 \$4
8 6 4
8 6 4
8 6 4
8 6 4
8 6 4
8 6 4
8 6 4
DIPLOMA

1st. 2nd. 3rd.
\$8 \$6 \$4
8 6 4
8 6 4
8 6 4
8 6 4
8 6 4
8 6 4
8 6 4
DIPLOMA

1st. 2nd. 3rd.
\$8 \$6 \$4
8 6 4
8 6 4
8 6 4
8 6 4
8 6 4
8 6 4
8 6 4
DIPLOMA

1st. 2nd. 3rd.
\$8 \$6 \$4
8 6 4
8 6 4
8 6 4
8 6 4
8 6 4
8 6 4
8 6 4
DIPLOMA

tra. Entries

Class 23—Fowls.

Sec.		1st.	2nd
1	Pair Dorkings, white.....	\$2	\$1
2	" " silver grey	2	1
3	" " colored.....	2	1
4	" Polands, white crested, black	2	1
5	" " white.....	2	1
6	" " golden, unbearded	2	1
7	" " golden, bearded	2	1
8	" " silver, unbearded.....	2	1
9	" " silver, bearded.....	2	1
10	" Houdans.....	2	1
11	" Game Fowls, black or brown-breasted Reds	2	1
12	" " Pile	2	1
13	" " Duckwing	2	1
14	" " Any other variety.....	2	1
15	" Cochins, buff	2	1
16	" " white	2	1
17	" " black	2	1
18	" " partridge.....	2	1
19	" Brahmas, light	2	1
20	" " dark	2	1
21	" Lang Shans.....	2	1
22	" Spanish Fowls	2	1
23	" Plymouth Rocks	2	1
24	" Leghorns, white.....	2	1
25	" " brown	2	1
26	" Hamburgs, golden-pencilled	2	1
27	" " silver-pencilled	2	1
28	" " golden-spangled	2	1
29	" " silver-spangled	2	1
30	" " black	2	1
31	" Wyandotte	2	1
32	" Bantams, Sebright golden	2	1
33	" " silver.....	2	1
34	" " black or brown-breasted Reds	2	1
35	" " Pile	2	1
36	" " Japanese	2	1
37	" " duckwing game	2	1
38	" " black African	2	1
39	" Guinea Fowls.....	2	1
40	" Any other variety of Fowls not included in above class	2	1

Class 24—Chickens of 1886.

Sec.		1st.	2nd
1	Pair Dorkings, white	\$2	\$1
2	" " silver grey	2	1
3	" " colored.....	2	1
4	" Polands, white crested, black	2	1
5	" " white.....	2	1
6	" " golden unbearded.....	2	1
7	" " bearded.....	2	1
8	" " silver unbearded	2	1
9	" " bearded.....	2	1
10	" Houdans.....	2	1
11	" Game, black or brown-breasted Reds	2	1
12	" " Pile	2	1
13	" " Duckwing.....	2	1

Sec.	Pair	Ge
14	"	Co
15	"	
16	"	
17	"	
18	"	
19	"	B
20	"	
21	"	L
22	"	S
23	"	L
24	"	
25	"	H
26	"	
27	"	
28	"	
29	"	
30	"	B
31	"	
32	"	
33	"	
34	"	
35	"	
36	"	
37	"	Pl
38	"	W
39	"	Ar

Class

Sec.	Pair	Tur
1	"	
2	"	
3	"	
4	"	
5	"	
6	"	
7	"	Du
8	"	
9	"	
10	"	
11	"	Du
12	"	
13	"	
14	"	
15	"	Ge
16	"	
17	"	
18	"	
19	"	
20	"	
21	"	
22	"	
3	"	Bl
4	"	Dr
5	"	W

1st.	2nd	Sec.	1st.	2nd.
		14	2	1
\$2	\$1	15	2	1
2	1	16	2	1
2	1	17	2	1
2	1	18	2	1
2	1	19	2	1
2	1	20	2	1
2	1	21	2	1
2	1	22	2	1
2	1	23	2	1
2	1	24	2	1
2	1	25	2	1
2	1	26	2	1
2	1	27	2	1
2	1	28	2	1
2	1	29	2	1
2	1	30	2	1
2	1	31	2	1
2	1	32	2	1
2	1	33	2	1
2	1	34	2	1
2	1	35	2	1
2	1	36	2	1
2	1	37	2	1
2	1	38	2	1
2	1	39	2	1

Class 25—Turkeys, Ducks, Geese, Pigeons, Etc.

1st.	2nd	Sec.	1st.	2nd.
		1	\$3	\$2
		2	3	2
		3	3	2
		4	2	1
		5	2	1
		6	2	1
		7	2	1
		8	2	1
		9	2	1
		10	2	1
		11	2	1
		12	2	1
		13	2	1
		14	2	1
		15	2	1
		16	2	1
		17	2	1
		18	2	1
		19	2	1
		20	2	1
		21	2	1
		22	2	1

PIGEONS.

		3	1	50
		4	1	50
		5	1	50

Sec.		1st.	2nd
26	Pair Black or Blue Pied Pouters	1	50
27	" Red or Yellow " "	1	50
28	" Tumblers	1	50
29	" Jacobins	1	50
30	" Fantails	1	50
31	" Barbs	1	50
32	" Trumpeters	1	50
33	Collection of Pigeons	2	1
RABBITS.			
34	Pair lop-eared Rabbits	2	1
35	" common Rabbits	2	1

Agricultural Products Department.

In addition to the membership fee of \$1, entries made after Sept. 20th, and up to Sept. 27th, 25cts. extra. Entries made Monday of the Fair Week, 50cts. extra.

All the Grain Seeds, and other Agricultural Products in the following classes, must be growth of the year 1886 except Clover and Grass Seeds, which may be the growth of 1885.

The names of the different varieties of Wheat and other Grain, Roots, etc., must be inserted by each exhibitor in his list of entries.

The roots must be certified as of field culture, by the exhibitor, except potatoes, which are open to all.

Class 26—Grain, Small Field Seeds, Hops, Etc.

Sec.		1st	2nd.
1	White Winter Wheat, two bushels	3	2
2	Red Winter Wheat, two bushels	3	2
3	Democrat Wheat, two bushels	3	2
4	Spring Wheat, any kind, two bushels	3	2
5	Barley, (six rowed), two bushels	3	2
6	Oats (white), two bushels	3	2
7	Oats (black), two bushels	3	2
8	Field Peas, small, two bushels	3	2
9	Large Peas, two bushels	3	2
10	Hungarian Grass Seed, one bushel	3	2
11	White Field Beans, one bushel, large	3	2
12	White Field Beans, one bushel, small	3	2
13	Millet, one bushel	3	2
14	Indian Corn in the ear (white), two bushels	3	2
15	Indian Corn in the ear (yellow), two bushels	3	2
16	Indian Corn in the ear (yellow dent), two bushels	3	2
17	Timothy Seed, one bushel	3	2
18	Orchard Grass, one bushel	3	2
19	Clover Seed, one bushel	3	2
20	Flax Seed, one bushel	3	2
21	Bale of Hops, not less 112 lbs	5	3
22	Extras		

Class	Sec.	name
	1	Potato
	2	"
	3	"
	4	"
	5	"
	6	"
	7	"
	8	"
	9	"
	10	"
	11	"
		nam
		For on
		M
		N
	12	Swede
	13	Swede
	14	White
	15	Aberd
	16	Red C
	17	White
	18	Mang
	19	Mang
	20	Globe
	21	Globe
		For t
		(M
		O
		H
	22	Kohl
	23	White
	24	Paran
	25	Chick
	26	Squas
	27	Pump
	28	Pump
	29	Soya
	30	Tobac
	31	Broom
	32	Flax,
	33	Hemp
	34	Extra
		HC
		In ad
		cents will
		27th; 50
		week.
		Comp
		each Sect

Class 27—Roots, other Hoed Field Crops, Flax, etc.

Sec.		1st.	2nd.	3rd.
1	Potatoes, Beauty of Hebron, one bushel	\$2	\$1	
2	" St. Patrick, one bushel	2	1	
3	" Rural Blush, one bushel	2	1	
4	" The Belle, one bushel	2	1	
5	" White Elephant, one bushel	2	1	
6	" Burbank Seedling, one bushel	2	1	
7	" Clarke's No. 1, one bushel	2	1	
8	" Early Rose, one bushel	2	1	
9	" Early Ohio, one bushel	2	1	
10	" any other sort, one bushel	2	1	
11	" collection of not less than ten sorts, half peck each, named	4	3	
For one bushel of largest Potatoes of any variety one pair Mammoth Bronze Turkeys value \$6, offered by Geo. Nixon, Esq., Hyde Park, Ont.				
12	Swede Turnips, eight roots, purple top	2	1	
13	Swede Turnips, eight roots, any other sort	2	1	
14	White Globe Turnips, eight roots	2	1	
15	Aberdeen Yellow Turnips, eight roots	2	1	
16	Red Carrots, twelve roots	2	1	
17	White or Belgian Carrots, twelve roots	2	1	
18	Mangel Wurzel (long red), eight roots	2	1	
19	Mangel Wurzel (long yellow), eight roots	2	1	
20	Globe Mangel Wurzel (red), eight roots	2	1	
21	Globe Mangel Wurzel (yellow), eight roots	2	1	
For the best and largest collection of Field Roots, etc. (Mangele, Turnips, Carrots, Squashes, Pumpkins, Field Corn, etc., 3 each) \$5, offered by Geo. Nixon, Esq., Hyde Park, Ont.				
22	Kohl Rabi, eight roots	2	1	
23	White Sugar Beet, eight roots	2	1	
24	Parasnips, twelve roots	2	1	
25	Chickory, twelve roots	2	1	
26	Squashes, two, large, for cattle	2	1	
27	Pumpkins, two, mammoth field	2	1	
28	Pumpkins, four, common yellow field	2	1	
29	Soya Beans, ½ bushel	2	1	
30	Tobacco Leaf, 10 lbs. of cured, growth of Ontario	2	1	
31	Broom Corn, bush., 28 lbs	2	1	
32	Flax, 112 lbs., scutched	6	4	2
33	Hemp, 112 lbs	6	4	2
34	Extras			

HORTICULTURAL DEPARTMENT.

In addition to the usual membership fee of \$1, an additional charge of 25 cents will be made on all entries received after Sept. 20th and up to Sept. 27th; 50 cents extra will be charged for entries made on Monday of the Fair week.

Competitors can only make one entry and receive only one premium in each Section.

All the classes in this department from 28 to 33 inclusive are open to professionals as well as amateurs.

Exhibitors, before proceeding to place Fruits, Flowers, etc., in position, shall enquire of the superintendent or his assistants where the articles are to be placed.

When a Section calls for a certain number of a certain variety, there must not be any specimens more or less exhibited.

When a variety is not worthy or up to the usual standard of excellence, it may be ruled out or awarded a second or third prize at the discretion of the judges.

All Plants and Flowers in pots, Fruits, etc., must be delivered on the grounds on Monday the 27th Sept., and cut Flowers by 11 a.m. on Tuesday, the 28th Sept.

All exhibits once in the hall become subject to and under the control of the superintendent or committee in charge of the department, and cannot be removed or taken away unless permission be granted.

While the awards are being made the superintendent may, if he think necessary, clear or exclude all persons from the Hall until the duties of the judges are completed.

By a variety of Fruit is meant any sort generally known and acknowledged by pomologists and nurserymen. New varieties bearing only local names will be classed as seedlings.

In order to avoid unnecessary labor, it is particularly requested that exhibitors will only enter such varieties as they intend to exhibit.

Class 28—Garden Vegetables.

Sec.		1st.	2nd.
1	Salsify, twelve roots	\$1 00	\$ 50
2	Cauliflower, three heads	2 00	1 50
3	Cabbage (summer), three heads	1 50	75
4	Cabbage (winter), three heads	1 50	75
5	Collection of winter Cabbage, including Savoys, not less than four sorts, two of each kind	2 00	1 00
6	Scotch Kail, 3 heads	1 50	75
7	Red Cabbage, three heads	1 50	75
8	Twelve Carrots, for table, long red	1 50	75
9	Twelve intermediate or half long Carrots	1 50	75
10	Twelve Early Horn Carrots	1 50	75
11	Twelve Table Parsnips	1 50	75
12	Twelve ears early Sweet Corn	1 50	75
13	Twelve ears late Sweet Corn	1 50	75
14	Six roots of Celery (red)	1 50	75
15	Six roots of Celery (white)	1 50	75
16	Twelve Radishes (summer)	1 50	75
17	Twelve Radishes (winter)	1 50	75
18	Collection of Capsicums (ripe), three of each, properly named	2 00	1 00
19	Three Egg Plant Fruits (purple)	1 50	75
20	Twelve Tomatoes, Livingstone's Favorite	1 50	75
21	Twelve Tomatoes, Trophy	1 50	75
22	Twelve Tomatoes, Conqueror	1 50	75
23	Twelve Tomatoes, Canada Victor	1 50	75
24	Twelve Tomatoes, red, any other variety, properly named	1 50	75
25	Twelve Tomatoes, Acme	1 50	75
26	Collection of Tomatoes, 3 of each, properly named	2 00	1 00

Sec.	
27	Twelve
28	Twelve
29	Twelve
30	Twelve
31	Twelve
32	Picklin
33	Twelve
34	Four S
35	Four F
36	Four W
37	Greate
	thir
38	Extra

Sec.	
1	Apples,
	shi
2	Apples
3	"
4	"
5	"
6	"
7	"
8	"
9	"
10	"
11	"
12	"
13	"
14	"
15	"
16	"
17	"
18	"
19	"
20	"
21	"
22	"
23	"
24	"
25	"
26	"
27	"
28	"
29	"
30	"
31	"
32	"
33	"
34	"
35	"
36	"
37	"
38	"
9	"
40	"

Sec.		1st.	2nd.
27	Twelve Blood Beets, long	1 50	75
28	Twelve Turnip Beets	1 50	75
29	Twelve White Onions	1 50	75
30	Twelve Yellow Onions	1 50	75
31	Twelve Red Onions	1 50	75
32	Pickling Onions, 2 qts	1 50	75
33	Twelve Turnips, table	1 50	75
34	Four Summer Table Squashes	1 50	75
35	Four Fall Table Squashes	1 50	75
36	Four Winter Table Squashes	1 50	75
37	Greatest variety of Vegetables (distinct from other entries), three of each kind, named	5 00	3 00
38	Extra Entries		

Class 29—Fruit.

Sec.		1st.	2nd.
1	Apples, 3 barrels—fall and winter sorts correctly named, in shipping order	\$5 00	\$3 00
2	Apples, 30 varieties, correctly named, 4 of each	6 00	4 00
3	" 20 varieties, correctly named, 4 of each	5 00	3 00
4	" 10 varieties, correctly named, 4 of each	3 00	2 00
5	" dessert, 4 varieties, correctly named, 6 of each	2 00	1 00
6	" cooking, 4 varieties, correctly named, 6 of each	2 00	1 00
7	" 6 Red Astrachan	1 50	75
8	" 6 Early Strawberry	1 50	75
9	" 6 Early Joe	1 50	75
10	" 6 Snow	1 50	75
11	" 6 St. Lawrence	1 50	75
12	" 6 Duchess of Oldenburgh	1 50	75
13	" 6 London Pippin	1 50	75
14	" 6 Fall Pippin	1 50	75
15	" 6 Maiden's Blush	1 50	75
16	" 6 Gravenstein	1 50	75
17	" 6 Colvert	1 50	75
18	" 6 Fall Apples, any other variety	1 50	75
19	" 6 Ripston Pippin	1 50	75
20	" 6 Aesop's Spitzenburg	1 50	75
21	" 6 Baldwins	1 50	75
22	" 6 Rhode Island Greening	1 50	75
23	" 6 American Golden Russet	1 50	75
24	" 6 English Russet	1 50	75
25	" 6 Roxbury Russet	1 50	75
26	" 6 Grime's Golden	1 50	75
27	" 6 Winesap	1 50	75
28	" 6 Yellow Bellflower	1 50	75
29	" 6 Wagener	1 50	75
30	" 6 Tolman's Sweeting	1 50	75
31	" 6 Swayzie Pomme Gris	1 50	75
32	" 6 Pomme Gris	1 50	75
33	" 6 Northern Spy	1 50	75
34	" 6 King of Tompkins' Co	1 50	75
35	" 6 Fallwater	1 50	75
36	" 6 Porter	1 50	75
37	" 6 Swaar	1 50	75
38	" 6 Mann	1 50	75
9	" 6 Shiawassa Beauty	1 50	75
40	" 6 Benoni	1 50	75

Sec.		1st.	2nd.
41	Apples, 6 Drape D'Or	1 50	75
42	" 6 Seedling, fall variety	1 50	75
43	" 6 Seedling, winter variety	1 50	75
44	" 6 Winter, any other variety	1 50	75
45	" 6 Largest, any variety, circumstance to govern	1 50	75
46	" 6 Heaviest, any variety, weight to govern	1 50	75

Class 30—Fruit—Pears, Plums and Peaches.

Sec.		1st.	2nd.
1	Pears, 20 varieties, correctly named, 4 of each	\$6 00	\$4 00
2	" 10 varieties, correctly named, 4 of each	4 00	3 00
3	" 4 varieties, correctly named, 4 of each	2 00	1 00
4	" 6 Bartlett's	1 50	75
5	" 6 Clapp's Favorite	1 50	75
6	" 6 White Doyenne	1 50	75
7	" 6 Flemish Beauty	1 50	75
8	" 6 Louise Bon de Jersey	1 50	75
9	" 6 Beurre Clairgeau	1 50	75
10	" 6 Duchesse d'Angouleme	1 50	75
11	" 5 Belle Lucrative	1 50	75
12	" 6 Beurre Bosc	1 50	75
13	" 6 Beurre Superfine	1 50	75
14	" 6 Beurre Hardy	1 50	75
15	" 6 Sheldon	1 50	75
16	" 6 Seckel	1 50	75
17	" 6 Grey Doyenne	1 50	75
18	" 6 Beurre d'Anjou	1 50	75
19	" 6 Beurre Deil	1 50	75
20	Pears, 6 Lawrence	1 50	75
21	" 6 Winter Nelis	1 50	75
22	" 6 Glout Morceau	1 50	75
23	" 6 Vicar Wakefield	1 50	75
24	" 6 Goodale	1 50	75
25	" 6 Swan's Orange	1 50	75
26	" 6 Oswego Beauty	1 50	75
27	" 6 Howell	1 50	75
28	" 6 Mt. Vernon	1 50	75
29	" 6 Seedling	1 50	75
30	" 6 Fall, any other variety	1 50	75
31	" 6 Winter, any other variety	1 50	75
32	" 6 Largest, any variety	1 50	75
33	Plums, 6 varieties, correctly named, 6 of each	3 00	2 00
34	" 3 varieties, correctly named, 6 of each	2 00	1 00
35	" 12 dessert, 1 variety, correctly named	1 50	75
36	" 12 cooking, 1 variety correctly named	1 50	75
37	" 12 largest, any variety	1 50	75
38	Peaches, 6 varieties, correctly named, 6 of each	3 00	2 00
39	" 3 varieties, correctly named, 6 of each	2 00	1 00
40	" 6 white flesh, 1 variety, correctly named	1 50	75
41	" 6 yellow flesh, 1 variety, correctly named	1 50	75
42	" 6 seedling, white flesh	1 50	75
43	" 6 seedling, yellow flesh	1 50	75

Sec. 1 Gr
2
3
4
5
6
7
8
9
10
11
12
13
14
15
16
17
18
19
20
21
22
23
24
25
26
27
28
29
30
31
32
33
34
35
36
37
38
39

Class 31—Fruit, Grapes, Melons, Dried Fruit, Collections, &c.

Sec.		1st.	2nd
1	Grapes, 10 varieties, grown in open air, correctly named, 2 bunches of each	\$4 00	\$3 00
2	" 6 varieties, grown in open air, correctly named, 2 bunches of each	3 00	2 00
3	" 3 varieties, grown in open air, correctly named, 2 bunches of each	2 00	1 00
4	" Concord, 6 bunches	1 50	75
5	" Delaware, 6 bunches	1 50	75
6	" Clinton, 6 bunches	1 50	75
7	" Eumelan, 6 bunches	1 50	75
8	" Roger's No. 3, 6 bunches	1 50	75
9	" Roger's No. 4, 6 bunches	1 50	75
10	" Roger's No. 15, 6 bunches	1 50	75
11	" Roger's No. 19, 6 bunches	1 50	75
12	" Roger's No. 44, 6 bunches	1 50	75
13	" Moore's Early, 6 bunches	1 50	75
14	" Pocklington, 6 bunches	1 50	75
15	" Niagara, 6 bunches	1 50	75
16	" Allen's Hybrid, 6 bunches	1 50	75
17	" Prentiss, 6 bunches	1 50	75
18	" Salem, 6 bunches	1 50	75
19	" Isabella, 6 bunches	1 50	75
20	" Hartford Prolific, 6 bunches	1 50	75
21	" 6 bunches, any variety	1 50	75
22	" 10 varieties, grown under glass, 1 bunch each, correctly named	5 00	3 00
23	" 5 varieties, grown under glass, correctly named	3 00	2 00
24	" Best 3 bunches Black, grown under glass, correctly named	2 00	1 00
25	" Heaviest 3 bunches Black, grown under glass, correctly named	2 00	1 00
26	" Best 3 bunches White, grown under glass, correctly named	2 00	1 00
27	" Heaviest 3 bunches White, grown under glass, correctly named	2 00	1 00
28	" Best 3 bunches, any other color, grown under glass, correctly named	2 00	1 00
29	" Heaviest 3 bunches, any other color, grown under glass, correctly named	2 00	1 00
30	6 Nectarines, one or more varieties	1 50	75
31	6 Quinces	1 50	75
32	Raspberries, Red, not less than half pint	1 50	75
33	" White, not less than half pint	1 50	75
34	Melon, Green flesh	1 50	75
35	" Scarlet flesh	1 50	75
36	" Water	1 50	75
37	Collection of Crab Apples, 12 of each kind	2 00	1 00
38	Best assortment of Dried or Evaporated Fruits, consisting of not less than 1/4 bushel Apples, and of Peaches peeled, Plums, Cherries, Raspberries, Blackberries, Currants, 4 qts. each	10 00	6 00
39	Extras		

2nd.
75
75
75
75
75
75

2nd.
\$4 00
3 00
1 00
75
75
75
75
75
75
75
75
75
75
75
75
75
75
75
75
75
75
75
75
75
75
75
75
2 00
1 00
75
75
75
75
75
75
75
75
75
75

Class 32—Plants and Flowers in Pots, Vases, etc.

The rules relating to the time for delivery of exhibits will be strictly enforced.

Sec.		1st.	2nd
1	Greenhouse Plants, 25 distinct species, 1 of each.....	\$15	\$10
2	" " in flower, 3 best specimens, distinct species..	2	1
3	Begonias in flower, 6 varieties, 1 of each.....	2	1
4	" tuberos rooted, 6 varieties, 1 of each	2	1
5	" Rex (ornamental leaved), 6 varieties, 1 of each.....	2	1
6	Evergreen Shrubs, 6 varieties, 1 each	2	1
7	Coleus, 12 varieties, dwarf, 1 each	3	2
8	" 6 " " "	2	1
9	Gloxinias, 6 varieties, 1 each	2	1
10	Clematis, " "	3	2
11	Fuschias, 6 varieties, in flower, 1 each.....	3	2
12	Foliage Plants, 12 varieties, 1 of each	6	4
13	Geraniums, double, 6 varieties, in flower, 1 of each.....	2	1
14	" single, " " " "	2	1
15	" Golden Tricolors, 6 varieties, 1 of each	2	1
16	" Sweet Scented, " "	2	1
17	Ivys, trained, best collection of.	2	1
18	Caladiums, 12 varieties, 1 of each	3	2
19	Ferns, cultivated, 6 varieties, 1 each	2	1
20	Plants in flower, best display of, distinct from other entries ...	6	4
21	Roses, 3 varieties, in flower, 1 of each	2	1
22	Petunias, 6 varieties, in flower, 1 of each (3 double and 3 single),	2	1
23	Cannas or Indian Shot, 6 varieties, 1 of each.....	2	1
24	Tuberose, six.....	2	1
25	Hanging Baskets of Plant*, three	3	2
26	Rustic Stand, filled with plants.....	3	2
27	Coxcombs, dwarf varieties, six	2	1
28	Coxcombs, tall varieties, six	2	1
29	Balsams, in flower, 6 varieties, 1 of each	2	1
30	Stocks, ten-week, 6 varieties, 1 of each	2	1
31	Pansies, 12 varieties, 1 of each	2	1
32			
33	Extras		

Class 33—Cut Flowers, Bouquets, Floral Designs, etc.

The rules relating to the time for delivery of exhibits will be strictly enforced.

Sec.		1st.	2nd.
1	Cut Flowers, best display of	\$4	\$3
2	Annals, collection of, in bloom. named	3	2
3	Asters, collection of, 3 of each color	2	1
4	Chrysanthemums, collection of, in bloom, named	2	1
5	Petunias, 6 varieties, single, 1 of each	2	1
6	" 6 " double, 1 "	2	1
7	" largest and best collection of, 1 of each	2	1
8	Dianthus, 12 varieties, single, 1 of each.....	2	1
9	" 12 " double, 1 "	2	1
10	Dahlias, single, best collection of, 1 of each.....	2	1
11	" standard varieties, named, 25 varieties, 1 of each	2	1
12	" " " 12 " 1 "	2	1
13	" bouquet, named, 12 varieties, 1 of each	2	1
14	Pansies, 12 distinct varieties.....	2	1

Sec.	
15	Pansies
16	Roses
17	"
18	"
19	"
20	Holly
21	Gladioli
22	"
23	Marigolds
24	Phloxes
25	"
26	Zinnias
27	Verbena
28	"
29	Bouquets
30	"
31	"
32	"
33	"
34	"
35	Floral Designs
36	Wreaths
37	Mascots
38	Extras

DA

In a
cents w
50 cents
Priz
made in
Any
endeavo
awarded
Any
manufac
section.
Any
them ca
will rec
Hall.

Clas

On
Na
Ex

Sec.
1 Be
2

Th

Sec.		1st	2nd
15	Pansies, largest and best collection of	3	2
16	Roses, Hybrid Perpetual, 24 varieties, named 1 of each	3	2
17	" Bourbon, Tea and Noisette, 24 varieties, named 1 of each	3	2
18	" Tea, 3 varieties, 1 of each	2	1
19	" any other variety, 3	2	1
20	Hollyhocks, best collection of, 1 of each	2	1
21	Gladiolus, 12 varieties	2	1
22	" collection of, not less than 25 varieties	3	2
23	Marigolds, collection of, 3 each color	2	1
24	Phlox Drummondii, (annual) collection of, single trusses	2	2
25	" (Perennial) collection of, single trusses	2	1
26	Zinnias, double, collection of, single	2	1
27	Verbenas, 12 varieties, named, single trusses	2	1
28	" 24 " "	3	2
29	Bouquet, brides, white	2	1
30	" hand	2	1
31	" side table, or fan	2	1
32	" large vase or table	3	2
33	" everlasting flowers, home grown	2	1
34	" button hole	1	50
35	Floral Design for dinner table	3	2
36	Wreath of white flowers, 12 in.	3	2
37	Masonic Design of white flowers, 12 in.	3	2
38	Extras		

DAIRY PRODUCTS DEPARTMENT.

In addition to the usual membership fee of \$1 an additional charge of 25 cents will be made on all entries received after Sept. 20th and up to Sept. 27th; 50 cents extra will be charged for entries made on Monday of the Fair week. Prize winners will be required to sign a declaration that the cheese was made in the factory named.

Any exhibitor who shall, by misrepresentation as to dates or otherwise, endeavor to affect the decision of the judges shall forfeit any prize that may be awarded him.

Any factory or manufacturer can compete in all sections, but no factory or manufacturer will be allowed to exhibit under different names in the same section.

Any persons who do not wish to come with their exhibits may address them care of E. R. Robinson, Esq., Superintendent of Horticultural Hall, who will receive same on the grounds and have them duly placed in position in the Hall.

Class 34—Cheese, Butter, Bacon, Canned Fruits, etc.

Only one sample to be entered in Sec. 3 from any one factory.

Name of maker and factory to be given.

Exhibitors showing in Sec. 3 not allowed to compete in Section 4.

Sec.		1st.	2nd.	3rd.
1	Best three Cheese, any date, colored	\$25	\$15	\$10
2	" " " white	25	15	10

The prizes in above two sections are offered by the Western Dairymen's Association.

Sec.		1st.	2nd
3	Six Factory Cheese, not less than 40 lbs. each, with statement of number of cows, and management of factory, 2 cheese each made in July, August, and September.....	\$15	\$10
4	Three Cheese, dairy, not less than 20 lbs. each.....	8	6
5	" " Stilton	4	2
6	Butter, 3 kegs in shipping order, not less than 56 lbs. each	10	6
7	Firkin of Butter not less than 20 lbs.....	6	4
8	Butter, not less than 15 lbs., in crock	4	3
9	Butter, not less than 8 lbs., in roll or print	3	2
10	Twenty pounds Maple Sugar	2	1
11	One gallon Maple Syrup	2	1
12	Fifteen gallons Sorghum Syrup.....	2	1
13	Twenty-five lbs. Sorghum Sugar	2	1
14	Three sides of cured Bacon	2	1
15	Three rolls of spiced Bacon	2	1
16	Three Hams, cured.....	2	1
17	Lard, not less than 20 lbs.....	2	1
18	Flour, 100 lbs., from Canadian wheat.....	3	1
19	Salt, Canadian produce, one barrel	2	1
20	Barley, pot, 24 lbs	2	1
21	Barley, pearl, 25 lbs	2	1
22	Canned Meats, put up for sale, 1 dozen.....	5	3
23	Canned Vegetables, put up for sale, 1 dozen	5	3
24	Canned Fruits, an assortment, put up for sale, 1 dozen.....	5	3
25	Bottled Fruit, an assortment, home made, six.....	2	1
26	Bottled Pickles, an assortment, manufactured for sale, 1 dozen ..	2	1
27	Bottled Pickles, an assortment, home made, six.....	2	1
28	Indian Corn Meal, not less than 50 lbs.....	2	1
29	Oatmeal, standard, not less than 50 lbs.....	2	1
30	Oatmeal, granulated, not less than 50 lbs.....	2	1
31	Sauces for table use, an assortment, manufactured for sale, 1 doz.	2	1
32	Sauces for table use, assortment of six, home made.....	2	1
33	Soap, one box common	2	1
34	Soap, collection of assorted fancy	2	1
35	Starch, 12 lbs., corn	2	1
36	Starch, 12 lbs., flour	2	1
37	Starch, 12 lbs., potato	2	1
38	Bread, manufactured for sale, four loaves.....	2	1
39	Bread, home-made, two loaves.....	2	1
40	Biscuits and Crackers, assortments of twelve kinds	6	4
41	Assortment of Confectionery.....	8	6
42	Tobacco, 14 lbs., Canadian manufacture.....	2	1
43	Cigars, best assortment, Canadian manufacture	2	1
48	Best assortment of Canadian-made Wines, 4 bottles each.....	3	2
49	Extras		

Class 35—Bees, Honey, and Apiary Supplies.

Queens and colonies cannot compete for more than one premium.

Sec.		1st.	2nd.
1	Display comb Honey in most marketable shape, product of one apiary in 1886.....	\$6	\$4
2	Display extracted Honey in most marketable shape, product of one apiary in 1886.....	6	4
3	Display of comb Honey in most marketable shape, by a lady, product of her own apiary in 1886.....	6	4

Sec. 4 Dis
5 Cor
6 Ex
7 Be
8 Cra
9 Col
10 Dis
11 Bes
12 Gre
13 Bee
14 Bes
15 "
16 Hor
17 Wa
18 Fou
19 Fou
20 Bee
21 Com
22 Com
23 Com
24 Best
25 Best
26 Best
27 Fac
28 Bee
29 Bee
30 Hor
31 Dis
32 Lar
33 Que
34 Hor
35 Hor
36 Ext

Agr

Class

In
dermen
for Priz

2nd	1st	2nd.
	Sec.	1st. 2nd.
	4	Display of extracted honey in most marketable shape, by a lady, product of her own apiary 6 4
\$10	5	Comb Honey, not less than 20 lbs., quality to govern 3 2
6	6	Extracted Honey, not less than 20 lbs., quality to govern 3 2
2	7	Best granulated Honey 2 1
6	8	Crate comb Honey, not less than 20 lbs., in best shape for shipping and retailing 3 2
4	9	Colony of bees, properly named, must be the progeny of one queen, and exhibited in such shape as to be readily seen on two sides. Purity of race, docility, size of bees and numerical strength to be considered 3 2
3	10	Display of Queens to be put up in such shape as to be readily seen by visitors (blacks not to compete) 2 1
2	11	Best marked Queen Bee, bred in Canada 2 1
1	12	Greatest variety of Queens put up in same shape as for display of queens Diploma
1	13	Bee Hive for all purposes in the apiary 2 1
1	14	Best Bee Hive for extracted honey Diploma
1	15	" " comb " Diploma
1	16	Honey Extractor 2 1
1	17	Wax " 2 1
3	18	Foundation Mill Diploma
3	19	Foundation Press Diploma
3	20	Beeswax, not less than 5 lbs. 2 1
2	21	Comb foundation for surplus honey, not less than 3 lbs. 2 1
2	22	Comb foundation for brood chambers, not less than 5 lbs. 2 1
2	23	Comb foundation machine, making best foundation for brood chamber on the ground 3 2
2	24	Best pound sections, not less than fifty 1 50
2	25	Best one piece section for honey 1 50
2	26	Best dovetailed " " 1 50
2	27	Package with labels for retailing extracted honey 1 50
2	28	Bee Smoker 1 50
2	29	Bee Feeder 1 50
2	30	Honey Knife 1 50
2	31	Display of Apiarian Supplies 3 2
2	32	Largest and best display of Honey Bearing Plants, properly named and labelled Diploma
2	33	Queen Cage, such as is admitted to the mails by postal laws 1 50
6	34	Honey Vinegar, not less than one gallon 2 1
8	35	Honey Wine 2 1
2	36	Extras

Agricultural Implements, Machines, Tools Metal Work, Etc.

Class 36—Agricultural Implements and Machines for Exhibition only.

In this class, by request of numerous manufacturers, entries of the un-
dermentioned articles will be received for exhibition only, not in competition
for Prizes. The articles must be entered in the books in the same manner as

articles in other classes, and they will be provided with ample space for exhibition in the same manner as if competing for prizes.

Sec.	
1	Reaping Machine.
2	Mowing Machine.
3	Combined Reaper and Mower.
4	Self Binder with wire.
5	Self Binding Reaper with cord.
6	One Man Binder Reaping Machine.
7	Self Gatherer and Binder.
8	Steam Thresher and Separator.
9	Horse-Power Thresher and Separator.
10	Sulky Plow.
11	Double Mould Board Plow.
12	Double Furrow Plow.
13	Horse Rake.
14	Implement or Machine for cutting, pulling or otherwise harvesting Peas.
15	Horse Pitchfork and Tackle.
16	Stump Extractor.
17	Straw Cutter.
18	Grain Cracker.
19	Straw Cutter and Grain Cracker combined.
20	Turnip Topper and Rooter.
21	Fanning Mill.
22	Wooden Pump.
23	Iron Pump.
24	Mangle.
25	Grain Drill.
26	Grass and Grain Sower.
27	Combined Drill and Seeder.
28	Broadcast Sower with Harrow.
29	Fertilizer Sower.
30	Clover Threshing and Cleaning Machine.
31	Smut Machine.
32	Hay Loader.
33	Hay Tedder.
34	Portable Grist Mill.
35	Corn and Cob Crusher.
36	Flax Pulling Machine.
37	Portable Steam Engines:
38	" Tra- tion "
39	Ten Horse-Power.
40	Six " "
41	Two " "
42	One " "
43	Two Horse-tread Power.
44	One " "
45	Machine Jack.
46	Drag Sawing Machine.
47	Hay Baleing Press.
48	Machine for pulping Roots for Stock, power.
49	Wind Mill.
50	Washing Machine.
51	Wringing Machine.
52	Fire Escape.
53	Extras.

Sec.	
1	
2	
3	
4	
5	
6	
7	
8	
9	
10	
11	
12	
13	
14	
15	
16	
17	
18	
19	
20	
21	
22	
	Clas
Sec.	
1	
2	
3	
4	
5	
6	
7	
8	
9	
10	
11	
12	
13	
14	
15	
16	
17	

Class 37—Agricultural Implements, worked by Horse Steam, or Water Power.

Sec.		1st.	2nd.
1	Iron Plow	\$5	\$3
2	Iron Beam Plow, wooden handles.....	4	2
3	Chilled Plow, with skimmer	4	2
4	Wooden Breaking Plow	4	2
5	Subsoil Plow	4	2
6	Double Shear Trench Plow..	4	2
7	Gang Plow	5	3
8	Draining Plow or Ditching Machine for digging drains	6	4
9	Field or Two Horse Cultivator, iron.....	5	3
10	“ “ “ wood.....	4	2
11	Horse-Hoe or Single Horse Cultivator, iron	2	1
12	“ “ “ wood.....	2	1
13	Pair of Iron Harrows	4	2
14	Pair of Wooden Harrows.....	2	1
15	Metal Roller	5	3
16	Wooden Roller	3	2
17	Seed Drill or Barrow for turnips, etc., two rows.....	3	2
18	Machine for Cutting Roots for Stock.....	4	2
19	Cider Mill and Press.....	2	1
20	Machine for making Drain Tiles.....	6	4
21	Machine for making Bricks.....	6	4
22	Extras		

Class 38—Agricultural Tools and Implements for Hand Use.

Sec.		1st.	2nd.
1	Set Draining Tools	\$3	\$2
2	Half-dozen Spades.....	} Best assortment of	6 4
	Half-dozen Steel Hoes		
	Half-dozen Steel Shovels.. ..		
	Half-dozen Grain Scoops.. ..		
	Half-dozen Manure Forks.....		
3	Seed Drill or Barrow for Turnips, etc., one row	3	2
	Half-dozen Spading Forks.....		
4	Half-dozen Scythe Snaiths	} Best assortment of	6 4
	Grain Cradle		
	Half-dozen Grass Scythes		
	Half-dozen Cradle Scythes		
	Half-dozen Hay Rakes.....		
5	Half-dozen Hay Forks.....		
5	Lawn Mowing Machine	2	1
6	Corn Sheller	3	2
7	Straw Cutter	3	2
8	Cheese Press	2	1
9	Churn	2	1
10	Cheese Vat.....	6	4
11	Set Horse Shoes.....	2	1
12	Farm Gate	2	1
13	Specimen Farm Fence, wood or iron.....	2	1
14	“ “ “ flat steel strip, wire or barb, 1 or less than	2	1
	two rods to be erected on the ground.....		
15	Apple Packer.....	2	1
16	Fruit Evaporator or Drier	6	4
17	Extras		

exhi-

Peas.

Class 39—Machinery, Castings and Tools.

Sec.		1st.	2nd.
1	Cordwood Sawing Machine, steam or horse power	\$6	\$4
2	" " " hand-power	3	2
3	Assortment of castings (iron)	3	2
4	Edge Tools, an assortment, hand use, including 6 chopping axes	6	3
5	Machine for Planing Metals	6	3
6	Machine for Drilling Metals	6	3
7	Pump, in metal	2	1
8	Refrigerator	2	1
9	Saws, an assortment	4	2
10	Saw Mill, steam, in operation	15	10
11	Moulding Machine, one side	4	2
12	Moulding Machine, three sides	6	3
13	Shaping Machine	4	2
14	Scroll Sawing Machine	3	2
15	Tenoning Machine	5	3
16	Power Mortising Machine	5	3
17	Pony Planing Machine	5	3
18	Blind Machine, set off, not less than three, tenoning, boring, mortising and wiring	8	4
19	Sugar and Coffee Mills	2	1
20	Single Sawing Machine	5	3
21	Spinning Machine	2	1
22	Tools for working in metal, assortment	4	2
23	Turning Lathe	4	2
24	Best exhibit of Wood Working Machinery	Diploma	
25	Best exhibit of Iron Working Machinery and Tools	Diploma	
26	Extra entries		

Class 40—Metal Work (Miscellaneous).

Sec.		1st.	2nd.
1	Coppersmiths' Work, an assortment	\$3	\$2
2	Enamelled Hollow Ware, an assortment	2	1
3	Firearms; an assortment of Rifles and Shotguns	4	2
4	Files, collection of cast steel	2	1
5	Goldsmiths' Work	Diploma	
6	Silver and Gold Plating	Diploma	
7	Iron Fencing and Gate, ornamental	4	2
8	Nails, pressed, one keg	2	1
9	Nails, cut, one keg	2	1
10	Plumbers' Work, an assortment	4	2
11	Screws, an assortment	2	1
12	Tinsmiths' Work, an assortment	3	2
13	Assortment of Engineers' and Plumbers' Brass Goods and Castings	3	2

STOVES, &c.

14	Cooking Stove, for wood, with Furniture	\$3	\$2
15	" " for coal	3	2
16	Furniture for Cooking Stove, one set	3	2
17	Hall Stove, for wood	3	2
18	" " for coal	3	2
19	Parlor Stove, for wood	3	2
20	" " for coal	3	2
21	Cooking Range, portable	3	2
22	Hot Water Heating Apparatus	3	2

Sec. 23 St
 24 Co
 25 Be
 26 Ex

Class

Sec. 1 B
 2 B
 3 B
 4
 5
 6
 7 Co
 8 Co
 9
 10 Ca
 11 D
 12 SH
 13 D
 14 B
 15 F
 16 F
 17 F
 18
 19 G
 20 M
 21 H
 22 H
 23
 24 M
 25 O
 26 S
 27 S
 28
 29 S
 30
 31 S
 32 S
 33 T
 34 T
 35 T
 36
 37
 38
 39

Sec.		1st.	2nd.
23	Steam Radiator	3	2
24	Coal Oil Stove.....	3	2
25	Best Display of Stoves, by one manufacturer	Diploma	
26	Extras		

TEXTILE FABRICS, FURS, ETC.

Class 41—Woollen, Flax and Cotton Goods—Furs and Wearing Apparel, Factory Made Goods.

Sec.		1st.	2nd.
1	Bags from Flax or Hemp, Canadian growth, 1 doz.....	\$3	\$2
2	Bags, Cotton, doubled and twisted, warp and filling, 3 doz.....	3	2
3	Blankets, all wool, white twilled, 3 pairs	3	2
4	" " in colors, 4 pairs	3	2
5	" Cotton Warp, white, 3 pairs	3	2
6	" " in colors, 4 pairs	2	1
7	Cordage and Twines from Canadian growth, Flax or Hemp, as-sorted	3	2
8	Cottons, Bleached, an assortment, 8 pieces	3	2
9	" unbleached " 10 pieces	3	2
10	Carpets, an assortment, from Canadian wool, 10 pieces.....	4	2
11	Drawers and Shirts, all wool ribbed, each 3 doz.....	3	2
12	Shirts and Drawers, plain, 3 doz. each	3	2
13	Denims, Blue, Brown and Mixed, an assortment, 6 pieces	3	2
14	Best Collection of Ladies', Gentlemen's and Misses' Manufactured Furs, Trimmings, Gloves, Gauntlets, Dolmans, Linings, etc....	Diploma	
15	Furs, Robes, for single or double sleighs, 6 articles	3	2
16	Flannels, White all Wool, Plain and Twilled, 3 each	3	2
17	Flannels, all Wool, Twilled and Plain, in colors, 3 each	3	2
18	" Checked and Striped, all wool 6 pieces, heavy make....	3	2
19	Gloves, Leather, Gents, Ladies', and children's, each 1 doz.....	3	2
20	Mitts, " " " " " " " "	3	2
21	Hats, Silk and Felt, 6 of each	3	2
22	Horse Blankets, Canadian all Wool, 6 pairs	3	2
23	" " " shaped and strapped, 6 pairs	3	2
24	Mats and Rugs, sheep and other skins, dressed, white and colored, 1 doz. each	3	2
25	Overcoats, fine and heavy, Canadian made cloth, 2 each.....	Diploma	
26	Suits of Canadian Tweed, fine and heavy, 2 each.....	Diploma	
27	Shawls, long, Canadian wool, 1/2 doz.....	3	2
28	" square, " " " " " " " "	3	2
29	Stockings and Socks, woollen, white and colored, 1 doz. each....	2	1
30	" cotton, unbleached and colored, 1 doz. each	2	1
31	Socks, " " " " " " " "	2	1
32	Shirtings, Cotton, checks and stripes, 6 pieces.....	3	2
33	Tweeds and Full Cloths, all wool, 15 oz., 10 pieces 15 yds. each	5	3
34	Tweeds and Serges, all wool 10 oz., 10 pieces 15 yds. each	5	3
35	Ticking, cotton, an assortment, 10 pieces.....	3	2
36	Yarns, Knitting, heavy, all wool, white and colored, each 6 lbs..	3	2
37	" Fingering, all wool, white and colored, each 6 lbs.....	3	2
38	" Cotton, white, 6 bundles of 5 lbs. each	2	1
39	" " colored, 6 bundles of 5 lbs. each.....	2	1

Sec.		1st.	2nd.
40	" Flax or Hemp (Canadian growth), 5 lbs	2	1
41	Best assortment Ladies' Underclothing, not less than 50 per cent. wool, and not less than 3 doz.	3	2
42	Best assortment Ladies and Children's Knit Gloves, 5 doz.	3	2
43	Extras		

Class 42—Domestic Woollens from Home Spun Yarn—Strictly Home Made.

Sec.		1st.	2nd.
1	Blankets, all wool, white, twilled. 1 pair	2	1
2	" " " plain, 1 pair	2	1
3	Cloth, Fulled, not less than 15 yards, 1 piece	2	1
4	" Satinet, " " " "	2	1
5	Carpet, all wool " " " "	2	1
6	" Cotton Warp " " " "	2	1
7	" Rag " " " "	2	1
8	Flannel, all wool, white twilled, 15 yards, 1 piece	2	1
9	" " " plain, 15 yds., 1 piece	2	1
10	" cotton warp, white twilled, 15 yds., 1 piece	2	1
11	" " " plain " " "	2	1
12	" all wool, checked or striped, " " "	2	1
13	" cotton warp, checked or striped 15 yds., 1 piece	2	1
14	Mitts, all wool, men's heavy make, 6 pairs	2	1
15	Socks, " " " " "	2	1
16	Shawl, " " square, heavy fringed make, 1 only	2	1
17	Yarn, white and colors, an assortment of 6 lbs.	2	1
18	" fine fingering " " "	2	1
19	Extras		

Miscellaneous Manufactures, Building Materials, Constructions, Etc.

In addition to the usual membership fee of \$1, an additional charge of 25 cents will be made on all entries received after Sept. 20th and up to Sept. 27th; 50 cents extra will be charged for entries made on Monday of the Fair Week.

Class 43—Saddlers', Trunkmakers' Work, Etc.

Sec.		1st.	2nd.
1	Collars, assortment of	3	2
2	Harness, set of Double Carriage	6	4
3	Harness, set of Single Carriage	4	2
4	Harness, set of Team	4	2
5	Harness, set of Cart	3	2
6	Saddle, Lady's	3	2
7	Saddle, Gentleman's	3	2
8	Hames, Carriage or Gig, best assortment	3	2
9	Hames, Team or Cart, best assortment	3	2
10	Trunks, an assortment	3	2
11	Valises and Traveling Bags, an assortment	3	2
12	Whips, an assortment	3	2
13	Indian Rubber Belting and Tubing	3	2
14	Extras		

Sec. 1 B
2
3
4
5
6
7 B
8 M
9 C
10 E

Sec. 1 S
2
3 U
4
5 H
6 Sk
7 B
8 B
9 Pa
10 E
11 P
12 B
13 P
14 S
15 K
16 C
17
18 R
19 S
20
21 L
22

23 L
24 L
25 E

Cla
Sec. 1 B

2 B
3 E
4 C

5 H
6 C
7 E
8 M
9 E

Class 44—Shoe and Bootmakers' Work.

Sec.		1st.	2nd.
1	Boots, Ladies' hand-sewed, an assortment, twelve pairs.....	3	2
2	" Gentleman's hand-sewed; an assortment, twelve pairs	3	2
3	" Machine-made, Ladies' twelve pairs	3	2
4	" " " Gents', " "	3	2
5	" hand-pegged, an assortment, six pairs ..	3	2
6	" machine-pegged, six pairs....	3	2
7	Boot and Shoe Uppers, twelve pairs.....	3	2
8	Men's German Felt Boots, twelve pairs	3	2
9	Children's Shoes, an assortment of twelve pairs	3	2
10	Extras		

Class 45—Leather.

Sec.		1st.	2nd.
1	Sole Leather, Spanish, two sides.....	2	1
2	" " Slaughter, two sides	2	1
3	Upper Leather, two sides	2	1
4	" " Grained, two sides	2	1
5	Harness Leather, two sides	2	1
6	Skirting for Saddles, two sides.....	2	1
7	Brown Strap and Bridle, two sides of each	2	1
8	Belt Leather, two sides	2	1
9	Patent Leather for carriage or harness work, two sides	2	1
10	Enamelled Leather for carriage or harness work, two skins	2	1
11	Patent Leather for Bootmakers, two sides	2	1
12	Buff Leather, two sides	2	1
13	Pebbled Leather, two sides	2	1
14	Split Leather, two sides....	2	1
15	Kip Skins, two skins	2	1
16	Calf, waxed, two skins	2	1
17	" grained, two skins.....	3	1
18	Russets, two skins	2	1
19	Sheep Skins, colored, twelve	2	1
20	" " white, twelve	2	1
21	Leather, kinds not otherwise described, assortment of	2	1
22	" Machine Belting, an assortment, hemlock or oak tanned or union of both	4	2
23	Leather, an assortment hemlock or oak tanned or union of both ..	2	1
24	Lace Leather.....	2	1
25	Extras.....		

Class 46—Cabinet Ware and other Wooden and Hair Manufactures.

Sec.		1st.	2nd.
1	Best Suite Drawing Room Furniture, upholstered by exhibitor, Frames, American or Canadian make, but not necessarily the manufacture of exhibitor	DIPLOMA	
2	Best Suite Dining Room Furniture	DIPLOMA	
3	Best Suite Bedroom Furniture	DIPLOMA	
4	Carving in Wood, decorative, not connected with any other article on exhibition	6	4
5	Hat Rack	2	1
6	Collection of Fret Work.....	2	1
7	Best Inlaid Wood Work.....	3	2
8	Mantlepiece in Wood	DIPLOMA	
9	Brushes for painters' use, an assortment	2	1

Sec.		1st.	2nd
10	Other Brushes, an assortment	2	1
11	Coopers' Work, an assortment of.	2	1
12	Corn Brooms, 1 doz	2	1
13	Turning in Wood, collection of Specimens	2	1
14	Turned Hollow Wooden Ware.	2	1
15	Veneers from Canadian woods, undressed.	2	1
16	" " " polished.	2	1
17	Assortment of Machine-made Mouldings	3	2
18	Picture Frame, ornamental gilt	3	2
19	Washtubs and Pails, factory-made, 3 of each	3	2
20	Willow Ware, six specimens	2	1
21	Collection of Handles.	2	1
22	Extras		

Class 47—Sewing Machines and Musical Instruments for Exhibition Only.

At the suggestion of several of the manufacturers of Sewing Machines, no prizes will be offered. Manufacturers are, however, invited to exhibit their machines, for which ample space will be allotted. The same will apply to Musical Instruments.

Sec.	
1	Sewing Machine, manufacturing.
2	Sewing Machine, family.
3	Sewing Machine, button-hole.
4	Sewing Machine, embroidery.
5	Sewing Machine, single thread.
6	Sewing Machine, wax thread.
7	Musical Instruments.
8	Extras.

Class 48—Chemical Manufacturers' Preparations.

Sec.		1st.	2nd.
1	Colors, assortment in oil, pulp and powder	\$2	\$1
2	Medicinal Herbs, Roots and Plants, native growth.	3	2
3	Perfumes, assortment of	2	1
4	Chemicals, assortment of	5	3
5	Pharmaceutical Products, assortment of	5	3
6	Oil, Neatsfoot, half gallon.	2	1
7	Refined Petroleum Oil	3	2
8	Finest display of Petroleum Products exhibited by one person or firm.		DIPLOMA
9	Artificial Limbs	3	2
10	Surgical Appliances.	3	2
11	Sulphuric Acid	3	2
12	Glue, not less than ten pounds.	2	1
13	Extras		

Class 49—Drawings, Architectural and Mechanical Engravings, Paper, Printing, Book-Binding, etc.

Sec.		1st.	2nd.
1	Drawing architectural, geometrical and perspective view	\$3	\$2
2	Decorative House Painting	3	2
3	Engraving on Wood, with proof.	3	2
4	" " Copper, "	3	2
5	Geometrical Drawings of Engine or Mill work, colored	3	2

Sec.	
6	Lit
7	
8	Per
9	Per
10	Me
11	Bo
12	Bo
13	Let
14	Pos
15	Car
16	Pri
17	Pap
18	Pap
19	Pap
20	Pod
21	Ext

Class

Sec.	
1	Bri
2	Bri
3	Ma
4	Pla
5	Bes
6	Ma
7	Mo
8	Ass
9	Pot
10	Sev
11	Sig
12	Sto
13	Car
14	Gal
15	Car
16	Be
17	Ex

Sec.	
1	Co

2	Co
---	----

3	Co
---	----

4	Ins
---	-----

5	Ins
---	-----

Sec.		1st.	2nd.
6	Lithographic Drawing, plain	3	2
7	" " colors, printed	3	2
8	Penmanship, business hand, without flourishes	3	2
9	Penmanship, ornamental	3	2
10	Mechanical Drawing from Model	3	2
11	Book-binding (blank book), assortment of	6	4
12	Book-binding (letter press), assortment of	6	4
13	Letter press printing	3	2
14	Posters, plain and ornamental	3	2
15	Card Printing, plain and ornamental	3	2
16	Printing type, an assortment of	3	2
17	Paper Hangings (Canadian paper), 1 doz. rolls, assorted	6	4
18	Paper, printing, writing and wrapping, 1 ream each	3	2
19	Papers, blotting and colored, 1 ream each	3	2
20	Pocket Books, Wallets, etc., an assortment	3	2
21	Extra Entries		

Class 50—Building Materials and Constructions, Marble, Stone Work, Pottery, etc.

Sec.		1st.	2nd.
1	Bricks, pressed or machine made, 1 doz	\$2	\$1
2	Bricks, hand made, 1 doz	2	1
3	Mantelpiece in Marble	\$5	\$3
4	Plaster Casts	3	2
5	Best collection of House Decorations in Plaster	3	2
6	Marble Headstone	5	3
7	Monument, marble, stone, or any other substance	8	4
8	Assortment Drain Tiles	2	1
9	Pottery, an assortment	3	2
10	Sewerage Pipes, stoneware, a-sortment of sizes	3	2
11	Sign Writing	2	1
12	Stoneware, an assortment	5	3
13	Canadian Decorated Porcelain and Delf Ware, vitrified and other than painted	6	4
14	Galvanized Iron Moulding	6	4
15	Carving in Stone, Decorative, not connected with any other article on exhibition	3	2
16	Best Fountain, in operation	6	4
17	Extras		

Class 51—Natural History.

BIRDS.

Sec.		1st.	2nd.
1	Collection of Native Stuffed, with common and technical names attached	\$6	\$4

FISHES.

2	Collection of Native, stuffed or preserved in spirits, with common and technical names attached	3	2
---	---	---	---

INSECTS.

3	Collection of Native, with common and technical names attached	3	2
4	Insects, Collection of Native, with common and technical names attached, injurious to field crops and fruits	3	2
5	Insects, Collection of Foreign, with common and technical names attached	3	

Sec.		1st.	2nd
MAMMALIA.			
6	Collection of Native, stuffed or preserved in spirits, with common and technical names attached	3	2
REPTILES.			
7	Collection of Native, stuffed or preserved in spirits, with common and technical names attached	3	2
MINERALS.			
8	Collection of Native, named and classified.....	3	2
PLANTS.			
9	Collection of Native, arranged in their natural families, and named	3	2
STUFFED BIRDS AND ANIMALS.			
10	Stuffed Birds and Animals of any country, collection of	3	1
11	Collection of Shells, any country	3	1
12	Indian Curiosities.....	3	1
13	Coins	3	1
14	Extras		

FINE ARTS DEPARTMENT.

In addition to the usual membership fee an additional charge of 25 cents will be made on all entries received after Sept. 20th and up to Sept. 27th ; 50 cents extra will be charged for entries made on Monday of the Fair week.

All exhibits in this department must be the production of the exhibitor.

The productions of professionals and amateurs will be classed and hung separately.

All views from nature in any section of this or next class, to have attached the name of the locality, or other necessary particulars, where view was obtained.

Evidence of originality to be furnished by the exhibitor, whenever required by the judges or the Committee.

No article will be awarded a money prize in Fine Arts that has once been exhibited and taken first prize at a previous Western Fair, but may show for a Diploma.

Any persons who do not wish to come with their exhibits may address them, care of W. Y. Brunton, Esq., Superintendent of the Palace, who will receive same on the grounds, and have them duly placed in position.

Articles will be received for the Fine Arts Department on Saturday, the 25th, and Monday, the 27th Sept. It is particularly requested that as many as possible will send in their exhibits on Saturday, in order that the Superintendent and Committee may get all hung in good time, that the judges may not be delayed in making their awards.

Class 52—Professional List.

Professional artists are to be understood as those who paint or teach for a livelihood, or as a matter of profit, or who habitually sell or offer for sale their productions ; or who have at any previous time habitually painted or taught for a livelihood or for profit.

In colored photographs, the name of the artist who colors, as well as the name of the photographer, to be attached to all specimens.

		OIL (ORIGINALS.)	
	Sec		
	1	Any subject	DIPLOMA
	2	Animals, from life.....	"
3	2	3 Flowers, grouped or single	"
	4	Landscape or Marine Painting.....	"
	5	Landscape—Canadian subject	"
3	2	6 Portrait.....	"
	7	Historical or Figure subject	"
3	2	8 Still Life	"

WATER COLORS.

	9	Any subject	"
3	1	10 Animals, from life	"
3	1	11 Flowers, grouped or single	"
3	1	12 Landscape or Marine View	"
3	1	13 Landscape—Canadian subject	"
	14	Historical or Figure subject	"
	15	Portrait	"
	16	Still Life	"

PENCILS, CRAYONS, ETC.

	17	Crayon, colored	"
	18	Crayon, plain	"
	19	Pen and Ink Sketch	"
	20	Pencil Drawing	"
	21	Septa Drawing	"
	22	Crayon Portraits	"
	23	Original Design in Industrial Art.....	"
	24	Stained Glass, collection of specimens.....	"

PROFESSIONAL OR AMATEUR—FIGURE SUBJECTS (originals.)

	25	Carving in Stone, in relief.....	\$6	\$4
	26	Model, in clay or wax	4	3
	27	Statues, Statuettes, in marble, parian or metal	4	3

PHOTOGRAPHY.

	28	Ambrotypes, collection of	DIPLOMA
	29	Photograph Portraits collection of, in duplicate, one set colored.	"
	30	" " collection of, plain	"
	31	" Landscapes and Views, collection of.....	"
	32	" Portraits, finished in oil.....	"
	33	" " finished in Indian ink.....	"
	34	" " finished in water colors	"
	35	" Enamels, vitrified, either plain or colored	"
	36	Extras	"

Class 53—Amateur List.

Amateur Artists are to be understood as those who do not paint or teach for a livelihood or for profit, or habitually sell or offer for sale their productions; and who have not at any time heretofore done so.

Evidence of originality to be furnished by the exhibitor whenever required by the Judges or the Committee.

No article will be awarded a money prize in Fine Arts that has once been exhibited, and taken first prize at a previous Western Fair, but may be shown for a diploma.

OIL (originals).		
Sec.		
1	Any subject	1st. 2nd. \$5 \$3
2	Animals, from life	4 2
3	Flowers, grouped or single	4 2
4	Landscape, or Marine Painting	4 2
5	" Canadian subject	4 2
6	Historical or Figure subject	4 2
7	Still Life	4 2
8	Portrait	4 2

OIL (copies).		
9	Any subject	4 2
10	Animals, grouped or single	3 2
11	Flowers, " "	3 2
12	Landscape or Marine View	3 2
13	" Canadian subject	3 2
14	Portrait	3 2
15	Still Life	3 2

WATER COLORS (originals).		
16	Any subject	5 3
17	Animals, from life	4 2
18	Flowers, grouped or single	4 2
19	Landscape or Marine View	4 2
20	Historical or Figure subject	4 2
21	Still Life	4 2

PAINTING ON PORCELAIN.

22	Best Collection of decorated Porcelain, open to all, not less than 12 pieces	DIPLOMA
----	--	---------

PENCILS, CRAYONS, &c. (originals).

23	Crayon, colored	\$2 \$1
24	Crayon, plain	2 1
25	" or Pencil Portrait	2 1
26	Pencil Drawing	2 1
27	Pen and Ink Sketch	2 1
28	Sepia	2 1

WATER COLORS (copies).

29	Any subject	DIPLOMA
30	Animals, grouped or single	\$2 \$1
31	Flowers	2 1
32	Historical or general Figure Subject	2 1
33	Landscape	2 1
34	Marine View	2 1
35	Still Life	2 1

PENCILS, CRAYONS, &c. (copies).

36	Crayon, colored	2 1
37	" plain	2 1
38	Pen and Ink Sketch	2 1
39	Pencil Drawing	2 1
40	Sepia	2 1
41	Modelling in Clay or Wax	2 1
42	Extra Entries	

make statutory declaration that the article in question is the production and property of the exhibitor, and has not taken a first prize at a previous Western Fair.

Exhibits made for the collection prizes (Secs. 76 to 80 inclusive) must be of sufficient merit to satisfy the judges that they are worthy of the prizes offered.

Any persons who do not wish to come with their exhibits may address them in care of Miss G. Street, Superintendent of the Ladies' Department, who will receive same at the Palace and place them in the class to which they belong.

Class 55—Bead Work, Painting, Embroidery, Lace Work, Knitting, etc.

Sec.		1st.	2nd.
1	Bead Work	\$2	\$1
2	Bead Work on Velvet, Satin or Canvas.....	2	1
3	Braiding	2	1
4	Hand Painting on Silk or Satin, Water Colors.....	2	1
5	" " " Oil	2	1
6	" " Velvet or Plush, Water Colors.....	2	1
7	" " " Oil "	2	1
8	Kensington Painting	2	1
9	Painting on Glass	2	1
10	" Jars	2	1
11	" Terra Cotta	2	1
12	Lustre Painting	2	1
13	Painting on China or Porcelain, vitrified	2	1
14	" " "	2	1
15	Crochet Work (wool)	2	1
16	" " (cotton)	2	1
17	" " and Cordon Braid Combined.....	2	1
18	Embroidery on Muslin	2	1
19	" on Plush, Velvet or Satin	2	1
20	" on Felt	2	1
21	" in Cotton	2	1
22	" in Silk	2	1
23	" in Chenille	2	1
24	" in Bullion	2	1
25	" in Arascene	2	1
26	Ribbon Embroidery	2	1
27	Plush "	2	1
28	Crewel " (wool)	2	1
29	" " (silk)	2	1
30	Roman "	2	1
31	Transfer Work.....	2	1
32	Ric-Rac.....	2	1
33	Guipure Work.....	2	1
34	Applique Work	2	1
35	Cretonne Work	2	1
36	Macrame or Twine Work	2	1
37	Etoching or Outline Work	2	1
38	Lace, Point	2	1
39	" Honiton	2	1
40	" Pillow or Bobbin	2	1
41	" Point and Honiton Combined	2	1
42	Crazy Work.....	2	1
43	Tatting.....	2	1

Sec.
44
45
46
47
48
49
50
51
52
53
54
55
56
57
58
59
60
61
62
63
64
65
66
67
68
69
70
71
72
73
74
75
76
77
78
79
80
81
C
Sec.
1
2
3
4
5
6
7
8
9
10
11
12
13
14
15

WESTERN FAIR.

ABSTRACT OF TREASURER'S ACCOUNTS, 1884.

RECEIPTS.

To Cash on hand per last audit		\$ 4,810 50
" Gate Receipts		10,900 02
" Sale of Booths, Stands &c.		2,100 40
" Per Secretary :		
Entries	\$1,004 50	
Stables	436 50	
Coops	117 25	
Protests, &c	24 00	1,582 25
" City of London Horticultural and Agricultural Society ..		1,000 00
" East Middlesex Agricultural Society ..		850 00
" Special Prizes		1,023 00
" Machinery Space		299 25
" Interest		220 91
" Shafting from Plummer Wagon Co.		68 40
" " " John Campbell, on account ..		54 00
" Superintendent	\$25 50	
" Cloakroom	8 20	33 70
" London Bicycle Club		20 00
" Sale of Manure	\$20 00	
" Stamps	1 47	21 47

EXPENDITURES.

By Cash paid Accounts of 1882-3 ..		\$22,983 96
" " Judges		152 88
" " Prizes		485 00
" " Expenses Superintendent's Department ..		11,225 50
" " Grounds and Buildings		879 28
" " Horse Department		385 81
" " Cattle		124 35
" " Sheep and Hogs Department ..		26 00
" " Poultry Department		39 00
" " Implements and Carriages		42 00
" " Horticultural Hall	\$128 55	59 00
" " Cloakroom	9 00	
" " Palace		137 55
" " Honey, Bees and Fish		178 78
" " Attractions		25 25
" " Gate and Ticket		1,269 51
" " Printing and Advertising		244 00
" " Bill Posting		1,695 56
" " Refreshments		121 43
" " Booths	\$ 10 00	554 30
" " Police	275 30	
" " Secretary	600 00	285 30
" " Treasurer and Assistants	270 40	
" " Miscellaneous	475 49	870 40
" " Tim-keeper	21 00	
" " Office		496 49
" " Refunds	26 80	210 26
" " Auditors	20 00	
" " Balance on hand		46 80
		3,429 51

\$22,983 96

D. MACKENZIE, *Treasurer.*

Audited and compared with vouchers, and found correct. Balance in Dominion Savings and Investment Society, three thousand four hundred and twenty-nine dollars and fifty-one cents.

London, January 14th, 1885.

JOHN S. DEWAR, }
A. G. SMYTH, } *Auditors.*

LIST OF THE PRINCIPAL EXHIBITIONS AND FAIRS TO BE HELD IN CANADA IN 1886.

PLACE OF FAIR OR

ASSOCIATION

56
02
40

25
00
00
00
25
91
40
00

70
00

47

3 96
2 88
5 00
5 50
9 28
5 81
4 35
6 00
9 00
2 00
9 00

7 55
8 78
25 25
39 51
44 00
95 56
21 43
54 30

85 30

70 40

96 49
210 26

46 80
429 51

983 96
er.
ance in
red and

LIST OF THE PRINCIPAL EXHIBITIONS AND FAIRS TO BE HELD IN CANADA IN 1886.

ASSOCIATION.	PLACE OF FAIR OR EXHIBITION.	DATES.	SECRETARY.	ADDRESS.
Western Fair and Industrial and Art Exhibition	London	Sep. 27 to Oct. 2	Geo. McBroom	London.
Canada's Great Industrial Fair and Agricultural Exp'n	Toronto	6 to Sept. 18	H. J. Hill	Toronto.
Berlin Horticultural Exhibition	Berlin	7 " 9	Alex. Roy	Berlin.
Agriculture and Arts Association	Guelph	20 " 25	Henry Wade	Toronto.
Bay of Quinte District	Belleville	21 " 24	Geo. H. Pe	Belleville.
South Renfrew	Renfrew	21 and 22	Robt. McLaren	Renfrew.
Southern Counties	St. Thomas	21 to Sept. 24	John A. Keays	St. Thomas.
Eastern Townships and Dominion Exhibition	Sherbrooke, Que.	23 " Oct. 2	Robert H. Tylee	Ste brooke, Que.
North Lanark	Almonte	22 " Sept. 24	W. P. McEwen	Almonte.
Great Central Fair	Hamilton	27 " Oct. 1	Jonsthan Davis	Hamilton.
South Ontario	Whitby	28 and 29	W. B. Pringle	Whitby.
County Grey	Durham	28 and 29	Arch. McKenzie	Durham.
Lindsay Central Exhibition	Lindsay	28 " 30	Jas. Keith	Lindsay.
Great Northern Exhibition	Collingwood	28 " Oct. 1	T. J. Crawford	Collingwood.
County Durham and Darlington	Bowmanville	28 " Oct. 1	E. Windatt	Fowmanville.
South Oxford Union Exhibition	Otterville	30 " 1 and 2	A. McFarlane	Otterville.
Central Wellington, Nichol and Pilkington	Elora	5 " 6	John Mair	Elora.
North Brant	Paris	5 " 6	James O'Neil	Paris.
County Lincoln	St. Catharines	5 to Oct. 7	Albert Pay	St. Catharines.
North Perth	Stratford	7 and 8	John Brown	Stratford.
Brantford Southern Fair	Brantford	6 to Oct. 8	R. M. Wilson	Brantford.
Northern Exhibition	Walkerton	5 " 8	Jacob Seegmiller	Walkerton.
Ontario Central Agricultural Association	Port Perry	5 " 8	Chas. R. Henderson	Port Perry.
County of Prince-Edward	Pictou	6 and 7	T. Bog	Pictou.
Peninsular Fair	Chatham	6 to Oct. 8	Jnc. Tiesman	Chatham.
West Elgin	Wallacetown	7 and 8	D. Campbell	Wallacetown.
County Haldimand	Cayuga	8 " 9	Thos. Bridger	Cayuga.
South Grafton	Smithville	12 " 13	W. H. Morgan	Smithville.

N. B.—Dates of other Fairs had not been sent in at the time of going to press.

LIST OF IMPORTANT EXHIBITIONS AND FAIRS TO BE HELD IN THE UNITED STATES IN 1886.

ASSOCIATION.	PLACE OF FAIR OR EXHIBITION.	DATES.	SECRETARY.	ADDRESS.
Montana Agri'l, Mineral and Mechanical Association	Helena, Ma.	Aug 23 to Aug 28	Francis Pope	Helena, Ma.
Latina Agricultural Association	Covington, Ky.	" 24 " 28	E. C. Hooper	Covington, Ky.
Ohio State Fair	Columbus, O.	" 30 to Sept. 3	W. I. Chamberlain	Columbus, O.
Saline County, Missouri	Marshall, Mo.	" 30 " 4	Ed. T. Orar	Marshall, Mo.
Mahaska County Agricultural Society	Oskaloosa, Iowa.	" 30 " 3	Gid. B. McFall	Oskaloosa, Iowa.
Minnesota State Fair	St. Paul	" 30 " 4	R. C. Judson	Farmington, Minn.
Kentucky Agricultural and Mechanical Association	Lexing'on, Ky.	" 31 " 4	Thos. L. Martin	Lexington Ky.
Iowa State Fair	Des Moines, Iowa.	Sept. 3	John R. Shaffer	Fairfield, Iowa.
Illinois State Fair	Chicago, Ill.	" 6 " 10	Charles F. Mills	Springfield, Ill.
Western National Fair	Lawrence, Kan.	" 6 " 6	R. W. Cunningham	Lawrence, Kan.
Omaha Fair	Omaha, Neb.	" 6 " 6	Daniel H. Wheeler	Omaha, Neb.
Tri-State Fair—Ohio, Indiana and Michigan	Toledo, O.	" 6 " 6	Chas. Reed	Toledo, O.
Pennsylvania State Fair	Philadelphia	" 6 " 6	D. W. Seiler	Harrisburg, Pa.
Monmouth County, New Jersey	Freehold, N. J.	" 7 " 9	Geo. F. Ward	Freehold, N. J.
Nebraska State Fair	Lincoln, Neb.	" 10 " 13	Robt. W. Furnas	Brownsville, Neb.
Michigan State Fair	Jackson, Mich.	" 13 " 13	J. C. Sterling	Monroe, Mich.
Northern Wisconsin Agri'l and Mechanical Association	Oshkosh, Wis.	" 14 " 17	A. C. Austin	Oshkosh, Wis.
Centralia Fair	Centralia, Ill.	" 14 " 17	S. A. Frazier	Centralia, Ill.
Elkhart County	Goshen, Ind.	" 14 " 17	Frank Irwin	Goshen, Ind.
Northern Indiana and Southern Michigan Ag'l Society	Mishawaka, Ind	" 20 " 24	C. G. Towle	Mishawaka, Ind.
Arkansas Valley	Whitita, Kan.	" 20 " 24	D. A. Mitchell	Whitita, Kan.
Western Michigan Agricultural and Industrial Society	Grand Rapids, Mich	" 20 " 20	James Cox	Grand Rapids, Mich
Erie Fair	Erie, Pa.	" 21 " 24	Geo. A. Evans	West Millcreek, Pa.
Indiana State Fair	Indianapolis, Ind	" 27 to Oct. 2	Al-x. Heron	Indianapolis Ind.
Oakland County	Pontiac, Mich.	" 28 " 1	H. A. Wyckoff	Pontiac, Mich.
Hillsdale County Fair	Hillsdale, Mich.	" 28 " 1	F. M. Holloway	Hillsdale, Mich.
St. Louis Fair	St. Louis, Mo.	Oct. 4	F. J. Wade	St. Louis, Mo.
Knox County	Vincennes, Ind.	" 11 " 16	Gerard Reiter	Vincennes, Ind.
Virginia State Fair	Richmond, Va.	" 20 " 22	M. W. Mayo	Richmond, Va.
Dallas State Fair	Dallas, Tex.	" 26 to Nov. 6	Sydney Smith	Dallas, Tex.

Virginia State Fair
Dallas State Fair
Dallas, Tex. | " 26 to Nov. 6. Statey surer
Dallas State Fair

