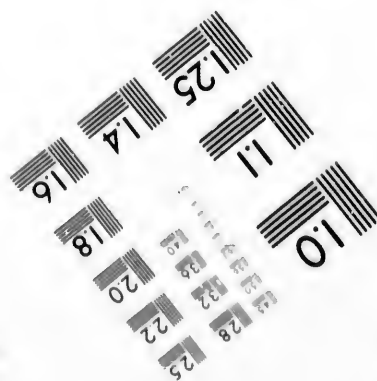
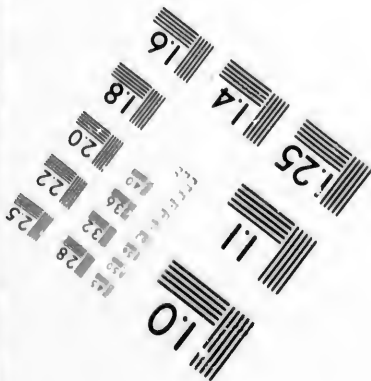
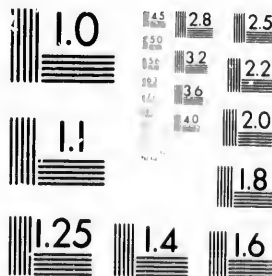


**IMAGE EVALUATION
TEST TARGET (MT-3)**



**Photographic
Sciences
Corporation**

23 WEST MAIN STREET
WEBSTER, N.Y. 14580
(716) 872-4503

Can

1.5 2.8 3.2 2.5
2.2 2.0
9

**CIHM/ICMH
Microfiche
Series.**

**CIHM/ICMH
Collection de
microfiches.**

10



Canadian Institute for Historical Microreproductions

Institut canadien de microreproductions historiques

1980

Technical and Bibliographic Notes/Notes techniques et bibliographiques

The Institute has attempted to obtain the best original copy available for filming. Features of this copy which may be bibliographically unique, which may alter any of the images in the reproduction, or which may significantly change the usual method of filming, are checked below.

L'institut a microfilmé le meilleur exemplaire qu'il lui a été possible de se procurer. Les détails de cet exemplaire qui sont peut-être uniques du point de vue bibliographique, qui peuvent modifier une image reproduite, ou qui peuvent exiger une modification dans la méthode normale de filmage sont indiqués ci-dessous.

- Coloured covers/
Couverture de couleur
- Covers damaged/
Couverture endommagée
- Covers restored and/or laminated/
Couverture restaurée et/ou pelliculée
- Cover title missing/
Le titre de couverture manque
- Coloured maps/
Cartes géographiques en couleur
- Coloured ink (i.e. other than blue or black)/
Encre de couleur (i.e. autre que bleue ou noire)
- Coloured plates and/or illustrations/
Planches et/ou illustrations en couleur
- Bound with other material/
Relié avec d'autres documents
- Tight binding may cause shadows or distortion
along interior margin/
La reliure serrée peut causer de l'ombre ou de la
distortion le long de la marge intérieure
- Blank leaves added during restoration may
appear within the text. Whenever possible, these
have been omitted from filming/
Il se peut que certaines pages blanches ajoutées
lors d'une restauration apparaissent dans le texte,
mais, lorsque cela était possible, ces pages n'ont
pas été filmées.
- Additional comments:/
Commentaires supplémentaires:

- Coloured pages/
Pages de couleur
- Pages damaged/
Pages endommagées
- Pages restored and/or laminated/
Pages restaurées et/ou pelliculées
- Pages discoloured, stained or foxed/
Pages décoiorées, tachetées ou piquées
- Pages detached/
Pages détachées
- Showthrough/
Transparence
- Quality of print varies/
Qualité inégale de l'impression
- Includes supplementary material/
Comprend du matériel supplémentaire
- Only edition available/
Seule édition disponible
- Pages wholly or partially obscured by errata
slips, tissues, etc., have been refilmed to
ensure the best possible image/
Les pages totalement ou partiellement
obscurcies par un feuillet d'errata, une pelure,
etc., ont été filmées à nouveau de façon à
obtenir la meilleure image possible.

This item is filmed at the reduction ratio checked below/
Ce document est filmé au taux de réduction indiqué ci-dessous.

| | | | | | | | | | | | |
|-----|-----|-----|-----|-----|-----|-----|-----|-----|-----|-----|-----|
| 10X | 12X | 14X | 16X | 18X | 20X | 22X | 24X | 26X | 28X | 30X | 32X |
| | | | | | ✓ | | | | | | |

The copy filmed here has been reproduced thanks to the generosity of:

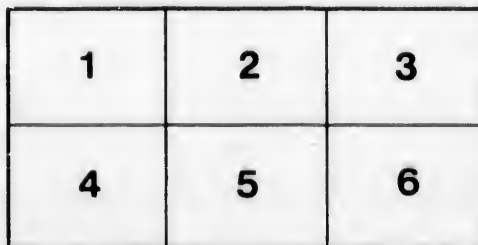
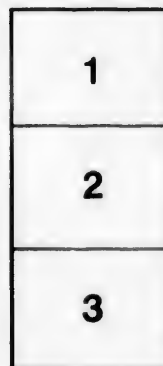
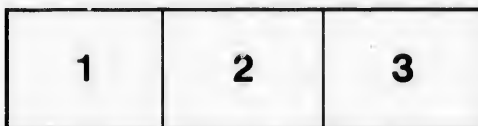
Library of the Public
Archives of Canada

The images appearing here are the best quality possible considering the condition and legibility of the original copy and in keeping with the filming contract specifications.

Original copies in printed paper covers are filmed beginning with the front cover and ending on the last page with a printed or illustrated impression, or the back cover when appropriate. All other original copies are filmed beginning on the first page with a printed or illustrated impression, and ending on the last page with a printed or illustrated impression.

The last recorded frame on each microfiche shall contain the symbol \rightarrow (meaning "CONTINUED"), or the symbol ∇ (meaning "END"), whichever applies.

Maps, plates, charts, etc., may be filmed at different reduction ratios. Those too large to be entirely included in one exposure are filmed beginning in the upper left hand corner, left to right and top to bottom, as many frames as required. The following diagrams illustrate the method:



L'exemplaire filmé fut reproduit grâce à la générosité de:

La bibliothèque des Archives
publiques du Canada

Les images suivantes ont été reproduites avec le plus grand soin, compte tenu de la condition et de la netteté de l'exemplaire filmé, et en conformité avec les conditions du contrat de filmage.

Les exemplaires originaux dont la couverture en papier est imprimée sont filmés en commençant par le premier plat et en terminant soit par la dernière page qui comporte une empreinte d'impression ou d'illustration, soit par le second plat, selon le cas. Tous les autres exemplaires originaux sont filmés en commençant par la première page qui comporte une empreinte d'impression ou d'illustration et en terminant par la dernière page qui comporte une telle empreinte.

Un des symboles suivants apparaîtra sur la dernière image de chaque microfiche, selon le cas: le symbole \rightarrow signifie "A SUIVRE", le symbole ∇ signifie "FIN".

Les cartes, planches, tableaux, etc., peuvent être filmés à des taux de réduction différents. Lorsque le document est trop grand pour être reproduit en un seul cliché, il est filmé à partir de l'angle supérieur gauche, de gauche à droite, et de haut en bas, en prenant le nombre d'images nécessaire. Les diagrammes suivants illustrent la méthode.

1871

1872

1873

1874

1875

1876

1877

1878

1879

1880

1881

1882

1883

1884

1885

1886

1887

INTERCOLONIAL RAILWAY.

General Instructions (No. 3.)

Progress Reports, &c.

CHIEF ENGINEER'S OFFICE,
Halifax, 26th May, 1869.

For various reasons it is important that as full information as possible should be regularly transmitted to the head office respecting the condition and progress of all works under construction. It is also of very great importance that an accurate record should be kept of every fact connected with the construction of the works; their progress from day to day; the time of the commencement and completion of distinct parts; their character; whether in accordance with specifications, plans, and directions, or otherwise; and generally, full notes of every operation or service performed on the line of Railway, or in connection therewith. It is important also to have notes respecting the force employed, the character of the weather, whether it be such as to enable the men to work full time, or otherwise. It is important also to provide means by which Inspectors and Assistant Engineers can readily draw the attention of those over them to any attempt at passing off inferior work or defective materials, or to any neglect or improper conduct, or to any other matter.

Records of Progress.

It is thought that the simplest and most effective mode of securing the objects desired, is for members of the Engineering Staff to keep an account of daily transactions, and to furnish copies thereof, together with such additional remarks as circumstances may appear to require for record in the several offices.

Daily transactions.

The undersigned has already requested each District, Division, and Assistant Engineer to keep

Diaries

regular official diaries in accordance with clause 28, General Instructions No. 2, and he has provided books for that purpose. To accomplish fully the objects in view, he now requests that the following scheme be carried into effect :

Duty of Assistant Engineers, Inspectors, &c.

(1.) Each Inspector and Assistant Engineer shall *daily* transmit to the Division Engineer a copy of the observations made and entered in his diary ; no occurrence should be considered too trifling : it is impossible to tell how important, a matter apparently of little or no moment, may ultimately become.

Duty of Division Engineers.

(2.) It will be the duty of the Division Engineers to read the observations of the Assistants and Inspectors, and to instruct them with regard to any neglect or omissions on their part. He will also add to their observations any remarks which may appear to be called for, and he will transmit them, along with a copy of his own journal entries, to the District Office. These documents should be transmitted by the Division Engineer not less frequently than twice in each week, viz. : on each Wednesday and Saturday evenings.

Duty of District Engineers.

(3.) The District Engineer will examine these various documents, and cause them to be regularly copied on the form provided, designated "Weekly Progress Report." It will be the duty of the District Engineer to take such action on the documents sent to him by the Division Engineers as the contents may seem to render necessary, and he shall instruct them with regard to any points or duties referred to therein. In the Weekly Progress Reports the District Engineer shall register his own observations, referring, when necessary, to the subjects alluded to in the other documents, drawing special attention to matters of more than ordinary importance ; he will see that nothing is omitted which he considers necessary to render these Weekly Reports an accurate register of the daily occurrences of the staff, and a complete record of the progress made from day to day in the construction of the Railway.

Regular Progress Reports.

(4.) The District Engineer will make it the duty of one of his office assistants to file in regular order,

in the District Office, the documents and daily records forwarded by the Division Engineers, after having first copied them consecutively on the Weekly Progress Report forms, and in the proper columns.

It is intended that there shall be distinct Weekly Progress Reports for each separate Contract, prepared as above described, and regularly transmitted to me.

SANDFORD FLEMING,
Chief Engineer.

