

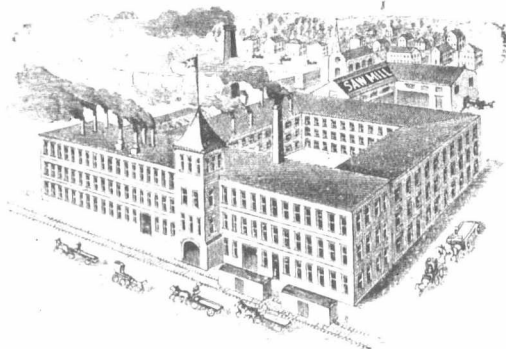
McLAUGHLIN CARRIAGE CO.,

1878
OSHAWA,
ONT.

1897.



Cutters



1898.



Sleighs



"ONE GRADE ONLY AND THAT THE BEST."

MANITOBA AND NORTHWEST TRADE ADDRESS:

The Cockshutt Plow Co.,

WINNIPEG, MAN.

NOVA SCOTIA AND NEW BRUNSWICK TRADE ADDRESS:

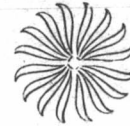
The McLaughlin Carriage Co.,

ST. JOHN, N. B.

1897.

GREETING.

1897.



HIRTY years ago we started out to build good, reliable and durable work. We have never varied from our first resolve, until now, after many years, the trade know thoroughly well that a vehicle of any kind made by "McLaughlin, Oshawa," is the standard for Canada, for quality and durability.

A perusal of the cuts on the following pages will show you many new designs of thoroughly well made, properly proportioned and stylish Cutters and Sleighs. It will also convince you that we keep right up to date, while our name plate guarantees Quality and Durability.

You can, therefore, place your valued orders with us with confidence, knowing that our goods are right and that we are capable of carrying out any agreement we may make with you.

We are indebted to you for your many favors in the past and hope by square, honest dealing to always merit your trade.

Respectfully yours,

R. McLAUGHLIN.

G. W. McLAUGHLIN,

R. S. McLAUGHLIN.

THE McLAUGHLIN CARRIAGE CO.,

OSHAWA, ONT

Nova Scotia and New Brunswick Trade, please address: McLAUGHLIN CARRIAGE CO., St. John, N.B.
Manitoba, N. W. T. and B. C. Trade, please address: THE COCKSHUTT PLOW CO., Winnipeg, Man.



No. 13, Piano Box.



Special care taken to make this Cutter exceptionally roomy and comfortable.

SPECIFICATIONS. * * * * *

WOODWORK.—Patent hinged dash; Bent Second Growth Hickory Knees; Second Growth Hickory beams; Bent fenders mortised onto beams (the strongest job); Round corner body and seat. Shafts extra XXX.

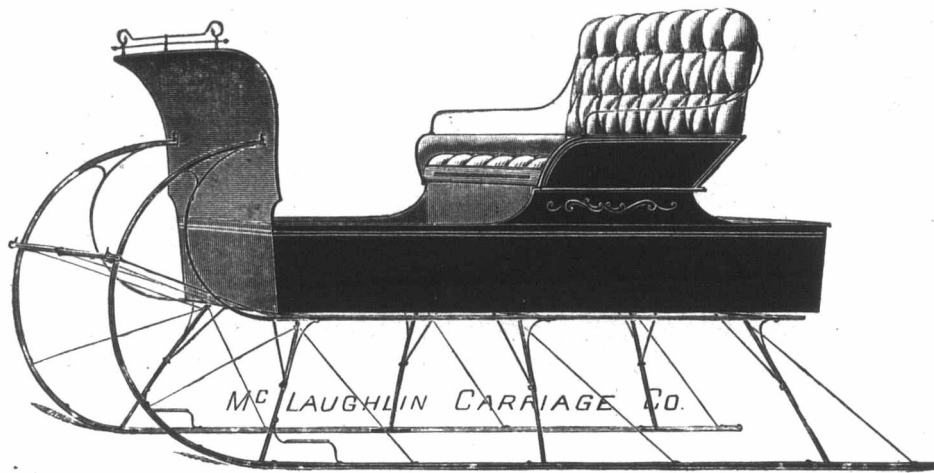
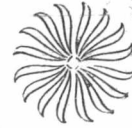
IRONWORK.—All braces T. irons, etc., of steel and forged in our own factory; Projecting shoes, Shifting shafts (either right or left).

PAINTING.—Body and seat black, neatly striped, Dash panel colored; gear black or carmine.

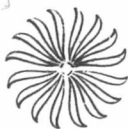
TRIMMING.—Crimson or Olive figured Plushette or green leather cloth; Drop back; Spring cushion; Boot; Carpet; Double bar silver dash rail.

EXTRAS.—Specially designed high solid back seat with spring back and spring cushion. Removable child's seat.

Also supplied with 1½ shoes and centre draft shafts with or without removable bar. **Something on Page 24 will interest you.**



No. 13, Piano Body.



No. 201, Cut Down Piano Box.



Specially designed for the Nova Scotia and New Brunswick trade, but sure to become popular everywhere.

SPECIFICATIONS.



WOODWORK.—High comfortable solid back seat; Solid deck; Full length bars fastened to beams, body bolted to bars; Dash is free of runners. Bent Second Growth Hickory knees (higher than ordinary,) Second Growth Hickory beams; Bent fenders, mortised on to beams and supported by braces to knees; Shafts extra XXX.

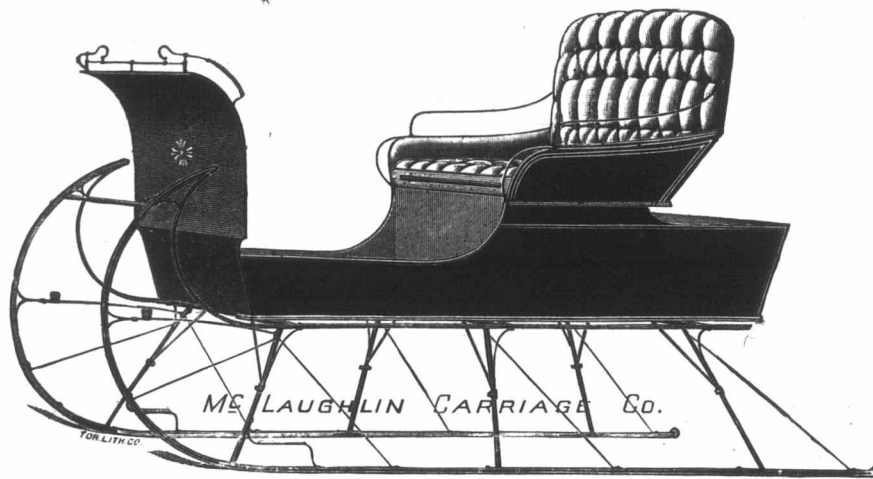
IRONWORK.—All braces, T irons, etc., of steel, and forged in our own factory. Projecting shoes $1\frac{1}{4}$ in. or $1\frac{1}{2}$ in.; centre draft shafts with or without removable bar, or shifting shafts, right or left.

PAINTING.—Body and seat black, nicely striped, Dash panel colored. Gear black or carmine.

TRIMMING.—Green or blue cloth; Spring back and spring cushion; Carpet; Plated solid brass dash rail; Shafts full leathered and silver tipped.

Child's seat supplied with this cutter when ordered.

Any vehicle of our production will wear well and give entire satisfaction.



No. 201, Special Cut Down, Piano Body.



No. 202, Improved Jarvis.



❁ ❁ Specially designed for a young man's cutter. Neat and light. ❁ ❁

SPECIFICATIONS. ❁ ❁ ❁ ❁ ❁ ❁

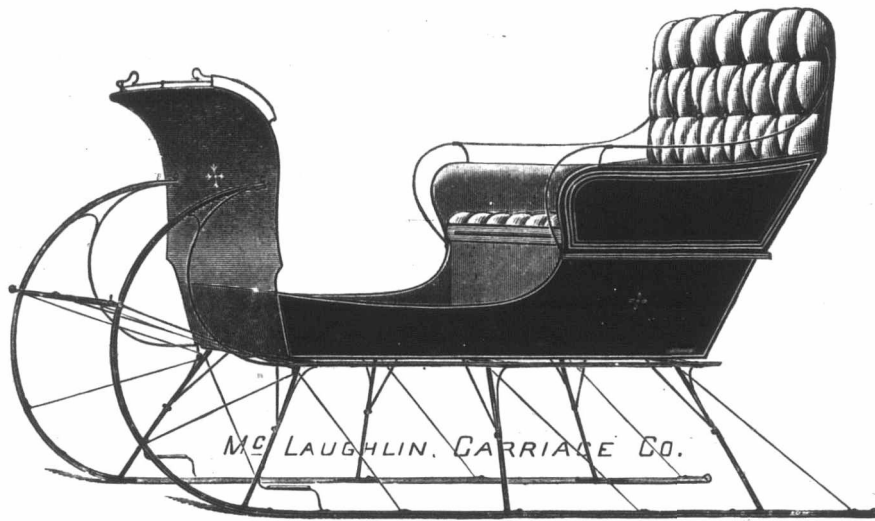
WOODWORK.—Patent Hinged Dash; Bent Second Growth Hickory Knees; Second Growth Hickory Beams; Bent Fenders mortised onto beams (the strongest and neatest method); Sides and back of seat have solid raised panels; Shafts extra XXX.

IRONWORK.—All braces, T irons, etc., of tough mild steel and forged in our own factory; Projecting shoes; Right or left Shifting shafts or centre draft with or without removable bar.

PAINTING.—Body, seat and dash panels wine or green; Mouldings and borders black; Gear carmine, green or black.

TRIMMING.—Green or blue cloth; Easy spring back and spring Cushion; Carpet; Plated brass Dash Rail; Shafts full leathered and silver tipped.

Dy you know the merits of our patent Hinged Dash. See page 24.



No. 202, Improved Jarvis.



No. 203, Klondyke.



Warm, Roomy and Comfortable. Sure to be a big seller.

SPECIFICATIONS.

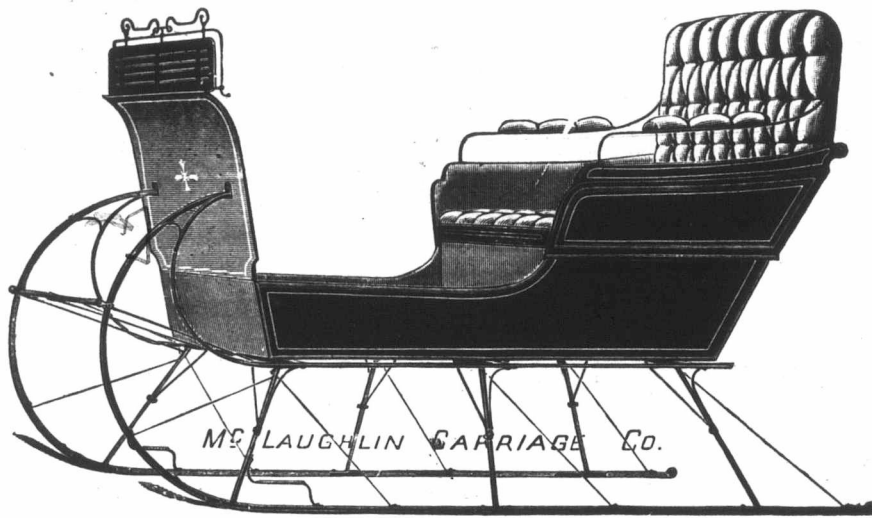
WOODWORK.—Patent hinged dash ; Bent Second Growth Hickory Knees ; Second Growth Hickory beams ; Bent tenders, mortised onto beams and supported by braces (the neatest and strongest job) ; Raised panel on seat. Extra XXX shafts.

IRONWORK.—All braces, T irons, etc., of steel and forged in our own factory ; Projecting shoes ; Shifting shafts (either right or left).

PAINTING.—Raised panel on seat and dash panel, Winé, Portland Amber or green ; Borders and mouldings black ; Gear carmine, green or black ; Body and gear neatly striped.

TRIMMING.—Green, blue or old gold cloth. Extra high and comfortable spring back ; Spring Cushion ; Deep sides ; Padded arm rests ; Carpet ; Screen, Plated solid brass rails ; Shafts full leather trimmed, silver tips.

Designed to take a small seat which we supply when ordered, also supplied with $1\frac{1}{2}$ inch shoes and centre draft shafts with or without detachable bar. See page 24.



No. 203, Klondyke.



No. 204, Portland.



The Gentleman's Driving Sleigh, par excellence. It's every sweep, curve and line, graceful, light and neat. Knees two inches higher than ordinary and double bend. Shafts have higher bend than ordinary.

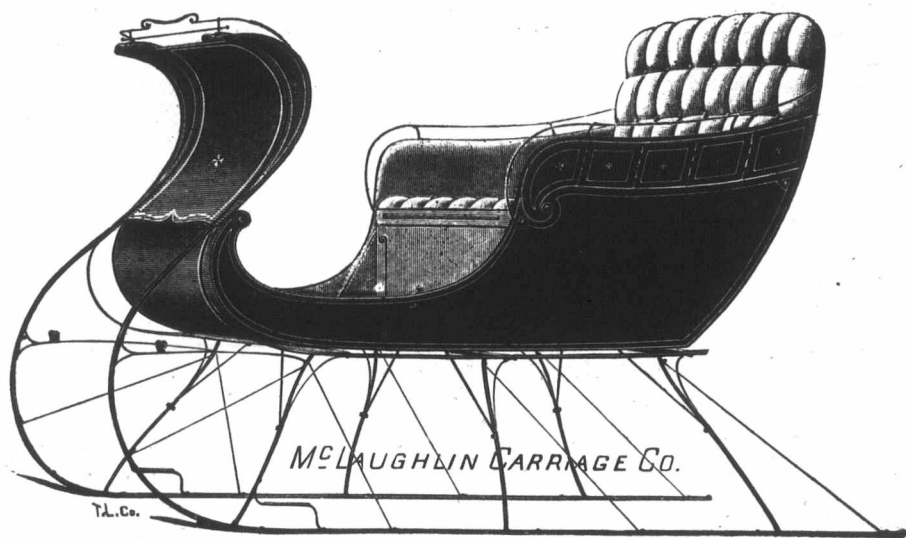
Stock used in this Cutter is same as in all our cutters, (it couldn't be better,) but we put more work on it. Quality and workmanship considered, the price we ask for this sleigh is very reasonable.

PAINTING.—Gear Light Carmine or Portland Green; Body Green and Black with Colored Panels.

TRIMMED in Blue or Green Cloth; Spring Back and Cushion, etc.

Supplied with centre draft shafts, with or without detachable bar or ordinary shifting. Narrow shoes regularly or wide when ordered.

"If you want Something Tasty, here it is."



No. 204, Portland.

: 11 :



No. 205, Jubilee Sleigh. Our White Beauty.

* RED, *

Carmine Gear and
Mouldings.

* WHITE, *

Snow White Body,
Gold Striping.

* BLUE. *

Small Panels, Deep
Ultramarine Blue.

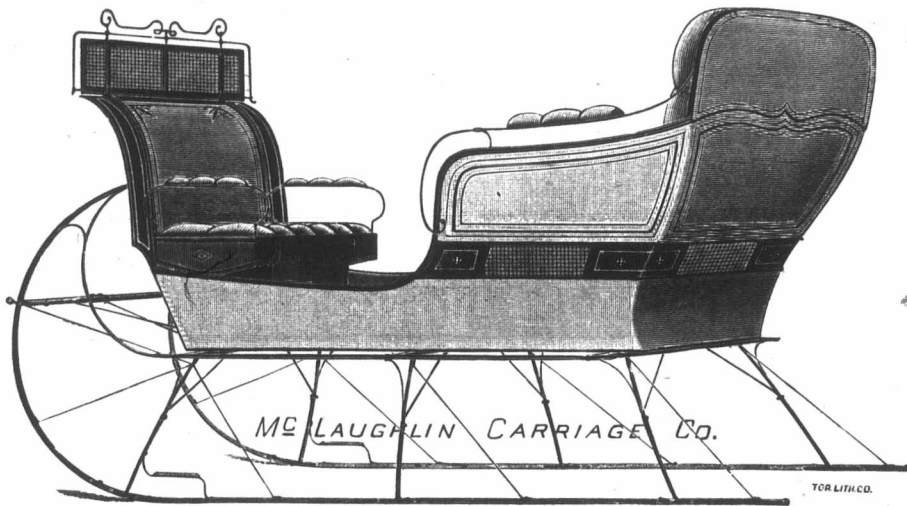
TRIMMINGS.—Crimson cloth.

Striking, yet not loud. Handsome and in perfect good taste. In a show room, on the street, at a fair, anywhere, this sleigh will command admiration. It is intended for the best trade and will comfortably seat four grown people.

Exceptionally high spring back; Wide roomy seat; Warm and comfortable in every way. Supplied regularly with shifting shafts, but can also be furnished with centre draft, with or without detachable bar.

We can also supply this Sleigh in dark colors, viz:—Gear, carmine, green or black; Body, black and green; Trimmed with green or blue cloth.

“NOT HOW CHEAP, BUT HOW GOOD.”



No. 205, Jubilee.

: 13 :



No. 206, Chamberlain.



A high grade Family Sleigh made and finished to please. Seats can be arranged as shown or dos-a-dos. See page 16.

PAINTING.—Gear carmine or green; Body panels and dash panels, carmine and black, or green and black, handsomely striped and finished.

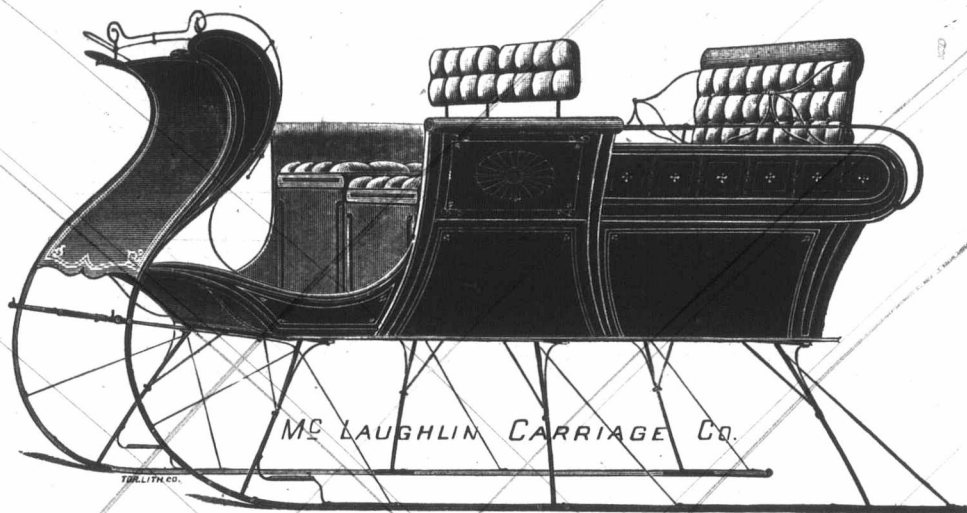
TRIMMINGS.—Green, Blue or Crimson Cloth.



The Cut speaks for Itself.



All braces T Irons, etc., made of tough mild welding steel and forged in our own factory. Shifting shafts or centre draft, with or without bar. See Page 24.



No. 206, Chamberlain.

: 15 :



No. 206, Chamberlain.



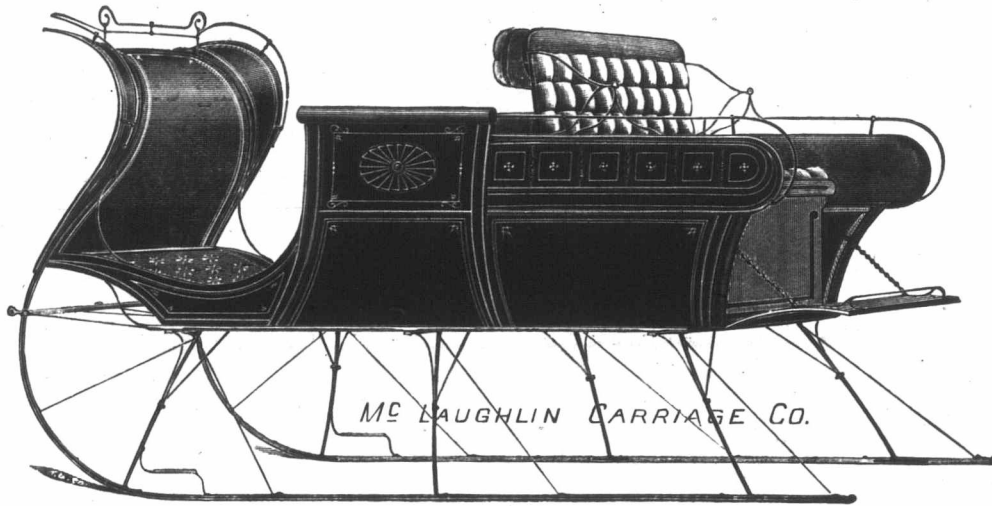
Instantly reversible to all face front. No complicated movements or mechanism. Can't get out of order. Throw a robe over the back of the seat and you have a single cutter.

WOODWORK.—Bent Second Growth Hickory Knees ; Second Growth Hickory Beams ; XXX Stock all through ; Extra XXX shafts, full leather trimmed and silver tipped.

PAINTING.—Gear green or carmine ; Body and dash panels, carmine and black, or green and black.

TRIMMING.—Green, Blue or Crimson Cloth ; Spring Cushions ; Extra box for driver ; Dash and panel rails of solid brass, silver plated.

“One Grade Only and that the Best.” See page 27.



No. 206, Chamberlain.



No. 207, Surrey Sleigh.



A superb Family or Livery Sleigh. Graceful lines. Pleasing design. Comfortably proportioned. It speaks for itself.

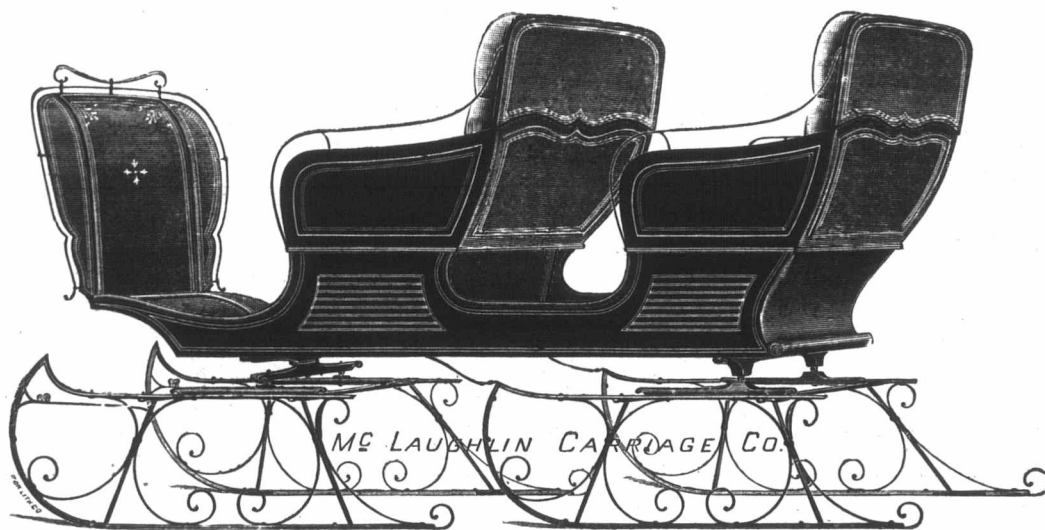
The spring backs are unusually high and easy, the sides deep and warm. The stock used and the workmanship The Very Best.

PAINTING.—Body and Seats, Black and Green, Gold Striping; Gear, Primrose, Green or Carmine.

TRIMMING.—Cloth, spring backs and spring cushions, plated solid brass dash rail.

Supplied regularly with Pole only. Can also be supplied with Shafts, with or without detachable bar.

The Best is always the Cheapest at any Price!



No. 207, Surrey Sleigh.

: 19 :



No 208, Family Sleigh.



Back seat instantly removable. Runners not attached to dash. This Sleigh is made for hard service, is very strong, light, compact and of a nice design.

Both seats have raised Panels and solid Backs, Spring Backs and Spring Cushions.

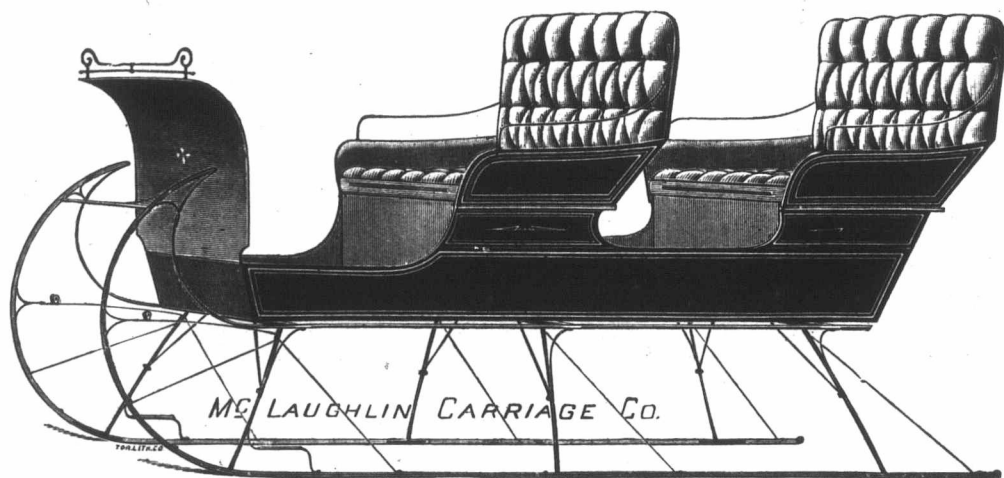
All braces, T irons, etc., made of tough mild welding steel. Shoes project outside of runners. Shafts XXX, either Shifting, or Centre Draft, with or without detachable bar.

PAINTING.—Body and Seats Black and Carmine, or Black and Green, nicely striped; Gear carmine, or green.

TRIMMING.—Cloth or figured Plushette; Floor Oil Cloth; Plated Brass Dash Rail.

Supplied regularly with Shifting Shafts, but can be furnished with Centre Draft with or without detachable bar or pole.

“ONE GRADE ONLY AND THAT THE BEST.”



No. 208, Family Sleigh.



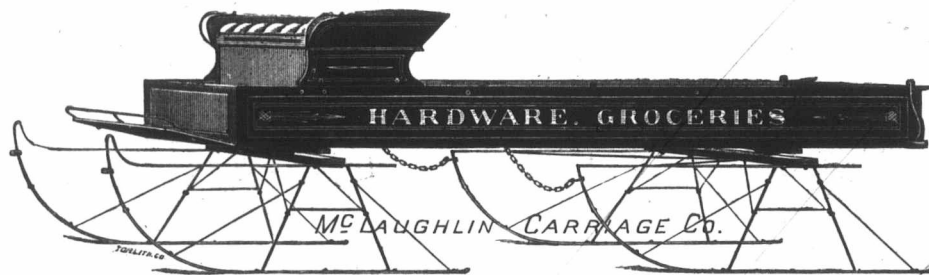
No. 209, Delivery Sleigh on Our Improved Steel Bobs.

A serviceable Sleigh for delivery of Hardware, Groceries, Dry-Goods, Flour and Feed, etc., also specially adapted for the delivery of Milk to Depot or Factory.

Our new style Body is practically indestructible. Heavy Second Growth White Ash Sills; Body Panels on top of Sills; Hardwood Top Rail; Long bolts through Top Rail, Panels and Sills. Body 8 ft. x 36 inches, inside measurements. Band iron on top of rail and on the bottom of body. Drop end gate full width.

Our Improved Reinforced Steel Bobs are the lightest and strongest on the market. See page 25 for full particulars.

Supplied regularly with centre draft shafts and detachable bar; Body painted Black and Green, nicely striped. Gear, Straw Color or Carmine. Cloth Spring Cushion.



No. 209, Delivery Sleigh.

bs.

Flour

second
d Top
x 36
n the

ngest

bar ;
Car-



"One Grade Only and that the Best."



Don't buy a Cutter or Sleigh because it is "Cheap."
Invest your good money where you know that the only outlay you will have is the First Cost.

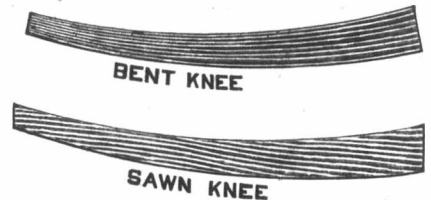
Buy of a firm who have a Good Reputation at stake in every vehicle turned out.

We assure you that you cannot afford to buy "Cheap Cutters" when you can get ours for so little extra money. The Accompanying Cut shows you at a glance one of the reasons why you have to pay more for our goods than for some others. Is it necessary to tell you that the bent Knees used by us are infinitely stronger than the sawn Knees used by others? See cut.

If you unfortunately happen to own a cutter not our make, and your horse turns out to be a pretty good kicker and manages to put one or both feet through the dash, or should you meet with an accident, you know it will take from one to three weeks to put your cutter into running order again. With our Patent Hinged Dash it is different.

All you have to do is to wire us "Express dash for Cutter No.—," and it will reach you by next express. Is this worth anything to you?

All our braces, T irons, etc., are made of best refined tough mild welding steel. We have every appliance and forge them all in our own factory. We know just what they are made of and know that they are right. **Our Name Plate is the strongest possible guarantee.**



Improved Reinforced and Rubber Packed Steel Bobs.



Improved design Frame. Looks neater than any other. Reinforced and strengthened at every point. Extra hard Steel Shoes attached to Frame. Rubber packed to prevent any breakage.

Weight complete under 120 pounds. Capacity 2500 pounds. We make the price so low that every one can afford to have a pair.

Supplied as shown in cut, Painted and Striped, ready to attach Box, with Bolsters to fit Body 38 inches wide. Special widths when ordered.

Extras :—Shafts with or without detachable bar or pole.

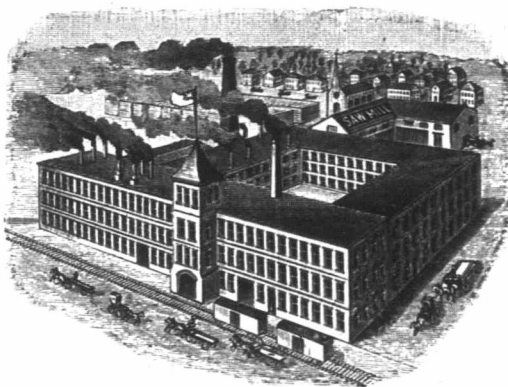
Rubber Packing prevents Bolts breaking !



“McLaughlin Carriages are Good Carriages.”

Our goods have been on the Canadian market for 30 Years and the above is the universal verdict of the Canadian Public. Building vehicles is no experiment with us.

There's our
Factory!
The Largest
and Best
Equipped in
Canada.



We build
nothing but
Honest, Reliable
and Strictly
Up-to-date
Vehicles.

“You can make no mistake in buying a McLaughlin Carriage,” because, Our Motto is - “One Grade Only and that the Best.”

“Our Goods are Right” and (quality considered) Our Prices are Right.

• • • **Terms of Sale.** • • •



All prices are for goods, securely packed, crated F. O. B. Oshawa Station G. T. R., or Myrtle Station, C. P. R. Upon delivery of goods to Transportation Company our responsibility ceases, and in case of damage or delay in delivery the purchaser's recourse is upon the Transportation Company.

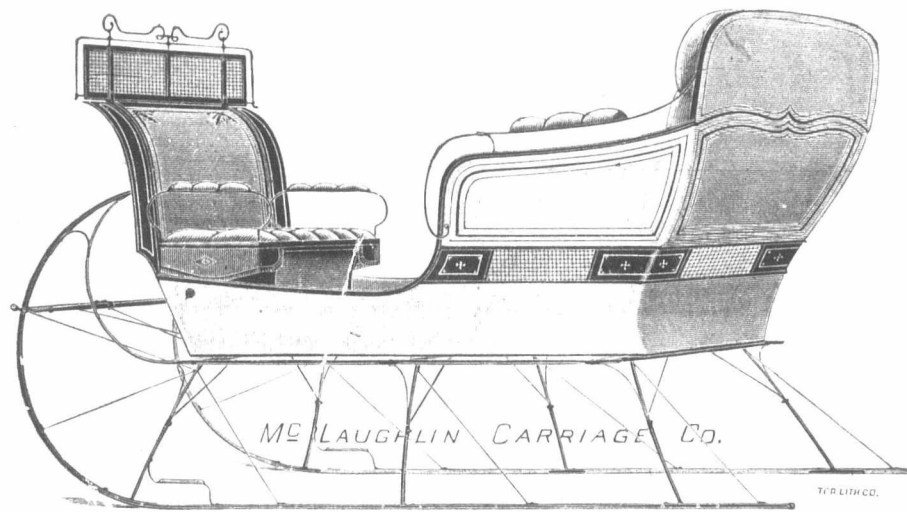
We obtain the lowest possible Freight Rates, but cannot guarantee them. Any claim for overcharge of freight must not be deducted from invoice, but if bill of lading and expense bill are sent to us we will do our best to collect same and will remit amount of overcharge to claimant. No claims for shortage or alleged errors will be entertained unless made within ten days after receipt of goods.

All remittances for business transactions in Ontario and Quebec, must be made direct to our Head Office in Oshawa, Ont., and for business done in Nova Scotia and New Brunswick, all settlements must be made through our Branch House, 32 Dock Street, St. John, N. B.

TERMS.—Four Months from December 1st. Any goods shipped before that time, Date as December 1st.

• • • **GUARANTEE.** • • •

“Our Name Plate is the Strongest Possible Guarantee.” If any vehicle we turn out is not satisfactory we'll make it so. We will not be responsible for any repair bills not authorized by us, but will replace free of charge any broken part upon the production of same at our Factory.



McLAUGHLIN CARRIAGE CO.

T. R. LITH CO.