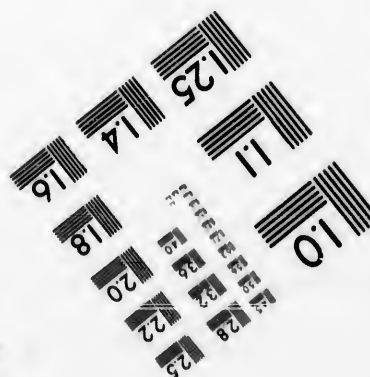
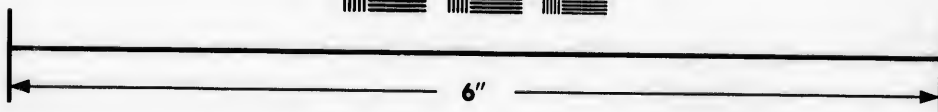
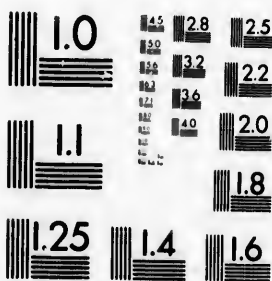


**IMAGE EVALUATION
TEST TARGET (MT-3)**



**Photographic
Sciences
Corporation**

23 WEST MAIN STREET
WEBSTER, N.Y. 14580
(716) 872-4503

**CIHM
Microfiche
Series
(Monographs)**

**ICMH
Collection de
microfiches
(monographies)**



Canadian Institute for Historical Microreproductions / Institut canadien de microreproductions historiques

© 1992

The Institute has attempted to obtain the best original copy available for filming. Features of this copy which may be bibliographically unique, which may alter any of the images in the reproduction, or which may significantly change the usual method of filming, are checked below.

- Coloured covers/
Couverture de couleur
- Covers damaged/
Couverture endommagée
- Covers restored and/or laminated/
Couverture restaurée et/ou pelliculée
- Cover title missing/
Le titre de couverture manque
- Coloured maps/
Cartes géographiques en couleur
- Coloured ink (i.e. other than blue or black)/
Encre de couleur (i.e. autre que bleue ou noire)
- Coloured plates and/or illustrations/
Planches et/ou illustrations en couleur
- Bound with other material/
Relié avec d'autres documents
- Tight binding may cause shadows or distortion
along interior margin/
La reliure serrée peut causer de l'ombre ou de la
distorsion le long de la marge intérieure
- Blank leaves added during restoration may appear
within the text. Whenever possible, these have
been omitted from filming/
Il se peut que certaines pages blanches ajoutées
lors d'une restauration apparaissent dans le texte,
mais, lorsque cela était possible, ces pages n'ont
pas été filmées.
- Additional comments: /
Commentaires supplémentaires:

This item is filmed at the reduction ratio checked below/
Ce document est filmé au taux de réduction indiqué ci-dessous.

10X	12X	14X	16X	18X	20X	22X
<input type="checkbox"/>	<input type="checkbox"/>	<input type="checkbox"/>	<input type="checkbox"/>	<input type="checkbox"/>	<input type="checkbox"/>	<input checked="" type="checkbox"/>

and Bibliographic Notes / Notes techniques et bibliographiques

best original
is copy which
may alter any
which may
filming, are

L'Institut a microfilmé le meilleur exemplaire qu'il lui a été possible de se procurer. Les détails de cet exemplaire qui sont peut-être uniques du point de vue bibliographique, qui peuvent modifier une image reproduite, ou qui peuvent exiger une modification dans la méthode normale de filmage sont indiqués ci-dessous.

Coloured pages/
Pages de couleur

Pages damaged/
Pages endommagées

Pages restored and/or laminated/
Pages restaurées et/ou pelliculées

Pages discoloured, stained or foxed/
Pages décolorées, tachetées ou piquées

Pages detached/
Pages détachées

Showthrough/
Transparence

Quality of print varies/
Qualité inégale de l'impression

Continuous pagination/
Pagination continue

Includes index(es)/
Comprend un (des) index

Title on header taken from: /
Le titre de l'en-tête provient:

Title page of issue/
Page de titre de la livraison

Caption of issue/
Titre de départ de la livraison

Masthead/
Générique (périodiques) de la livraison

black)/
e ou noire)

ur

distortion

bre ou de la
ure

n may appear
these have

is ajoutées
dans le texte,
pages n'ont

checked below/
n indiqué ci-dessous.

18X		22X	✓		26X		30X	
	20X		24X		28X		32X	

The copy filmed here has been reproduced thanks to the generosity of:

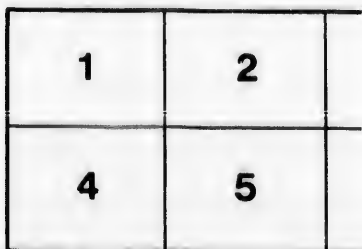
National Library of Canada

The images appearing here are the best quality possible considering the condition and legibility of the original copy and in keeping with the filming contract specifications.

Original copies in printed paper covers are filmed beginning with the front cover and ending on the last page with a printed or illustrated impression, or the back cover when appropriate. All other original copies are filmed beginning on the first page with a printed or illustrated impression, and ending on the last page with a printed or illustrated impression.

The last recorded frame on each microfiche shall contain the symbol \rightarrow (meaning "CONTINUED"), or the symbol ∇ (meaning "END"), whichever applies.

Maps, plates, charts, etc., may be filmed at different reduction ratios. Those too large to be entirely included in one exposure are filmed beginning in the upper left hand corner, left to right and top to bottom, as many frames as required. The following diagrams illustrate the method:



L'exé
géné

Les i
plus
de la
conf
filma

Les e
papier
par le
derni
d'impr
plat,
origi
premi
d'impr
la de
empr

Un d
derni
cas: l
symb

Les c
filmé
Lorsq
repro
de l'a
et de
d'ima
illust

ced thanks

L'exemplaire filmé fut reproduit grâce à la
générosité de:

ada

Bibliothèque nationale du Canada

quality
legibility
n the

Les images suivantes ont été reproduites avec le
plus grand soin, compte tenu de la condition et
de la netteté de l'exemplaire filmé, et en
conformité avec les conditions du contrat de
filmage.

are filmed
ing on
d impres-
te. All
ng on the
mpres-
a printed

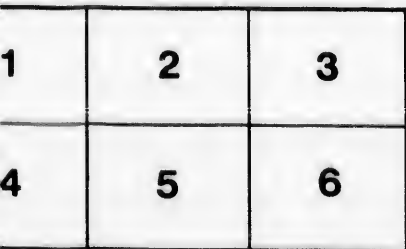
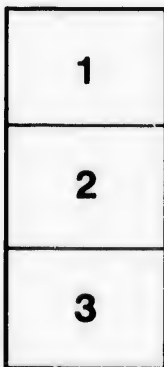
Les exemplaires originaux dont la couverture en
papier est imprimée sont filmés en commençant
par le premier plat et en terminant soit par la
dernière page qui comporte une empreinte
d'impression ou d'illustration, soit par le second
plat, selon le cas. Tous les autres exemplaires
originaux sont filmés en commençant par la
première page qui comporte une empreinte
d'impression ou d'illustration et en terminant par
la dernière page qui comporte une telle
empreinte.

iche
"CON-
END"),

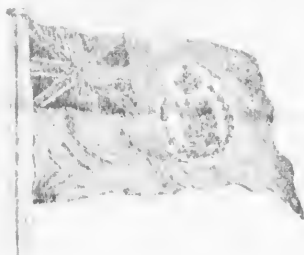
Un des symboles suivants apparaîtra sur la
dernière image de chaque microfiche, selon le
cas: le symbole \rightarrow signifie "A SUIVRE", le
symbole ∇ signifie "FIN".

d at
ge to be
med
left to
s as
ate the

Les cartes, planches, tableaux, etc., peuvent être
filmés à des taux de réduction différents.
Lorsque le document est trop grand pour être
reproduit en un seul cliché, il est filmé à partir
de l'angle supérieur gauche, de gauche à droite,
et de haut en bas, en prenant le nombre
d'images nécessaire. Les diagrammes suivants
illustrent la méthode.



NOTE: This is a reproduction of a document now being circulated in West Victoria by the I. O. O. F. It was shown Mr. Meredith in the course of his recent visit to Lindsay, in explanation of the fact that he had signed two additional pamphlets. Handbills were circulated during the demonstration in 1886 by the I. O. O. F.



Freemen of Victoria!

YOUR VOTES AND INFLUENCE

ARE RESPECTFULLY SOLICITED

JOHN S. CRUICK

A TRUSTED SUPPORTER OF

WILLIAM R. MEREDITH.

ELECTORS, on which Platform

MEREDITH—"The People's Friend."

1. Meredith demands Separation of Church and State.
2. Meredith demands ENGLISH shall be the language of the Schools of Ontario.
3. Meredith demands Text books shall be authorized for all schools. No disloyal book shall be used.
4. Meredith demands The schools shall be controlled "BY THE PEOPLE FOR THE PEOPLE."
5. Meredith demands All teachers must pass the same examinations. Now at great cost all protestants MUST train for certificates.
6. Meredith demands All electors shall be public school supporters unless they give notice to the contrary.
7. Meredith demands Boards of School Trustees shall be THE PEOPLE'S REPRESENTATIVES. Now the romish church appoints a representative on high school or collegiate institute boards. No other church may.
8. Meredith demands School trustees shall be elected by ballot.
9. Meredith demands No private schools shall receive government aid.
10. Meredith demands All desiring to change from one school section to another shall pursue the same legal procedure, they shall be equal before the law. Now protestants may not change without regular procedure and permission from municipal councils.
11. Meredith demands Separate School law amendments shall be repealed by the people's representatives.
12. Meredith demands The People's representatives in parliament shall regulate religious instruction in schools.
13. Meredith demands Separate Schools in Ontario should be abolished.
14. Meredith demands Decentralization of offices. Power to belong to the PEOPLE. Vide Liquor License laws and inspection.
15. Meredith demands Representation by population.
16. Meredith demands Public money shall be expended under control and by vote of the people's representatives in parliament. The contracting for the expenditure on the new parliament buildings of two millions of dollars of the people's money in excess of the sum voted is a direct violation of the constitution and the people's rights. The abuse by the Executive of the sale of timber limits also furnishes serious ground for complaint.
17. Meredith demands Government must be on the broad basis of CANADIAN CITIZENSHIP. The law must recognize a man not as a churchman but as a citizen of Canada.
18. Meredith demands The timber resources of Ontario must be husbanded, to avoid direct taxation.
19. Meredith demands The rights of freeholders in the north country on their lands shall be established. The hardy settler is entitled to a bonus rather than to have his timber taken away from him.
20. Meredith demands a secret ballot in elections to the Legislative Assembly, the same as for Dominion, Municipal and public school trustee elections.

1. M
2. M
who de
3. M
Yankoe
4. M
church.
suprem
5. M
confede
Ontario
6. M
shall be
or other
7. M
on high
Rome.
8. M
votes so
9. M
governm
not.
10. M
change
2, Ops,
which r
11. M
peal s
before r
12. M
or out o
structic
decides
13. M
14. M
rings a
sheriffs
15. M
mander
16. M
mainta
pose of
a Yank
costing
ple's r
is uphe
17. M
ing to
ance of
18. M
are sol
direct t
19. M
at any
20. M
the bal
trustee
and the
sellers a

Which Platform will You Stand ?

end."

the Schools

r all schools.

THE PEOPLE

ne examina-
tificates.

ol supporters

THE PEOPLE'S
representative
rch may.
ballot.

government

e school sec-
ey shall be
without regu-

nts shall be

parliament

should be

er to belong

t under con-
ment. The
buildings of
of the sum
ple's rights.
so furnishes

oad basis of
an not as a

rio must be

orth country
entitled to a

e Legislative
ublic school

MOWAT—"Cleary's Friend."

1. Mowat maintains Union of Church and State.
2. Mowat maintains FRENCH shall be the school language of those who desire-it.
3. Mowat maintains Separate Schools may and do use French, Yankee and other DISLOYAL text books as the priests direct.
4. Mowat maintains The priests may control the schools for the church. The romish church not the roman catholic people shall be supreme.
5. Mowat maintains Old romish standards used in Quebec before confederation shall be legal in roman catholic separate schools in Ontario.
6. Mowat maintains Willing or not willing, roman catholic citizens shall be rated as separate school supporters at the direction of the priest or other person.
7. Mowat maintains The romish church shall have a special trustee on high school boards who shall be appointed not by the people, but by Rome.
8. Mowat maintains Romish school trustees shall be elected by OPEN vote so that the priests may control the elections.
9. Mowat maintains Romish convents and nunneries may draw government support, while protestant Ladies' schools and colleges may not.
10. Mowat maintains A roman catholic may at his or his priest's will change from supporting one school to another. Vide school section No. 2, Ops, and others. Thus protestants may be left with a weak section, which means poor teachers or high taxation.
11. Mowat maintains Only the romish church authorities can repeal separate school laws, viz their consent must be obtained before repeal.
12. Mowat maintains The people's representatives in parliament or out of it may not say what shall be the nature of the religious instruction given in separate schools. The romish priesthood alone decides that; even the roman catholic ratepayers have no say.
13. Mowat maintains Separate schools shall be perpetuated.
14. Mowat maintains Centralization of offices. Power to be in rings and combinations. Vide Liquor Licenses, bailiffs, registrars, sheriffs, gaolers, &c, &c, &c.
15. Mowat maintains "Pocket" boroughs as Toronto, and gerrymandered constituencies as WEST VICTORIA.
16. Mowat maintains Though Sandfield Macdonald was ousted for maintaining that the Executive might under certain conditions dispose of public moneys; yet the Mowat government in league with a Yankee architect has entered into contract for provincial buildings costing two millions of dollars more than the sum voted by the people's representatives. The reckless sale of Ontario's timber limits is upheld by Mr. Mowat.
17. Mowat maintains Government shall be on the basis of pandering to the romish church hierarchy—who hitherto have held the balance of power.
18. Mowat maintains The timber limits of Ontario ought to be and are sold to produce temporary surplus, leaving the province to face direct taxation or bankruptcy, in a few years hence.
19. Mowat maintains the lumbermen may enter a man's property at any time and take the pine timber.
20. Mowat maintains that in elections to the Legislative Assembly the ballot shall be NUMBERED, and for roman catholic separate school trustee elections voting shall be OPEN. This enables the government and the romish hierarchy to trace and control the votes of liquor sellers and roman catholic electors.

