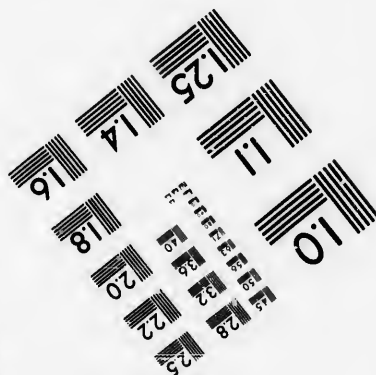
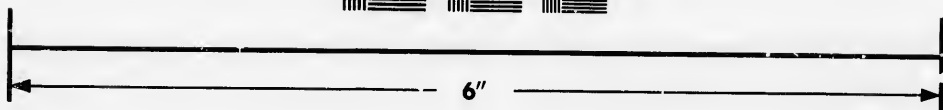
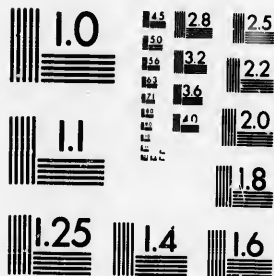


**IMAGE EVALUATION  
TEST TARGET (MT-3)**



**Photographic  
Sciences  
Corporation**

23 WEST MAIN STREET  
WEBSTER, N.Y. 14580  
(716) 872-4503



**CIHM/ICMH  
Microfiche  
Series.**

**CIHM/ICMH  
Collection de  
microfiches.**



**Canadian Institute for Historical Microreproductions / Institut canadien de microreproductions historiques**



**© 1986**

Technical and Bibliographic Notes/Notes techniques et bibliographiques

The Institute has attempted to obtain the best original copy available for filming. Features of this copy which may be bibliographically unique, which may alter any of the images in the reproduction, or which may significantly change the usual method of filming, are checked below.

L'Institut a microfilmé le meilleur exemplaire qu'il lui a été possible de se procurer. Les détails de cet exemplaire qui sont peut-être uniques du point de vue bibliographique, qui peuvent modifier une image reproduite, ou qui peuvent exiger une modification dans la méthode normale de filmage sont indiqués ci-dessous.

- |  |  |
|--|--|
| <input type="checkbox"/> Coloured covers/<br>Couverture de couleur   | <input type="checkbox"/> Coloured pages/<br>Pages de couleur   |
| <input type="checkbox"/> Covers damaged/<br>Couverture endommagée  | <input checked="" type="checkbox"/> Pages damaged/<br>Pages endommagées  |
| <input type="checkbox"/> Covers restored and/or laminated/<br>Couverture restaurée et/ou pelliculée  | <input type="checkbox"/> Pages restored and/or laminated/<br>Pages restaurées et/ou pelliculées  |
| <input type="checkbox"/> Cover title missing/<br>Le titre de couverture manque   | <input checked="" type="checkbox"/> Pages discoloured, stained or foxed/<br>Pages décolorées, tachetées ou piquées   |
| <input type="checkbox"/> Coloured maps/<br>Cartes géographiques en couleur   | <input type="checkbox"/> Pages detached/<br>Pages détachées  |
| <input type="checkbox"/> Coloured ink (i.e. other than blue or black)/<br>Encre de couleur (i.e. autre que bleue ou noire)   | <input checked="" type="checkbox"/> Showthrough/<br>Transparence   |
| <input type="checkbox"/> Coloured plates and/or illustrations/<br>Planches et/ou illustrations en couleur  | <input type="checkbox"/> Quality of print varies/<br>Qualité inégale de l'impression   |
| <input type="checkbox"/> Bound with other material/<br>Relié avec d'autres documents   | <input type="checkbox"/> Includes supplementary material/<br>Comprend du matériel supplémentaire   |
| <input type="checkbox"/> Tight binding may cause shadows or distortion<br>along interior margin/<br>La reliure serrée peut causer de l'ombre ou de la<br>distorsion le long de la marge intérieure   | <input type="checkbox"/> Only edition available/<br>Seule édition disponible   |
| <input type="checkbox"/> Blank leaves added during restoration may<br>appear within the text. Whenever possible, these<br>have been omitted from filming/<br>Il se peut que certaines pages blanches ajoutées<br>lors d'une restauration apparaissent dans le texte,<br>mais, lorsque cela était possible, ces pages n'ont<br>pas été filmées. | <input type="checkbox"/> Pages wholly or partially obscured by errata<br>slips, tissues, etc., have been refilmed to<br>ensure the best possible image/<br>Les pages totalement ou partiellement<br>obscurcies par un feuillet d'errata, une pelure,<br>etc., ont été filmées à nouveau de façon à<br>obtenir la meilleure image possible. |
| <input checked="" type="checkbox"/> Additional comments: [Printed ephemera] [4] p.<br>Commentaires supplémentaires:  |  |

This item is filmed at the reduction ratio checked below/  
Ce document est filmé au taux de réduction indiqué ci-dessous.

10X	12X	14X	16X	18X	20X	22X	24X	26X	28X	30X	32X
								✓			

The copy filmed here has been reproduced thanks to the generosity of:

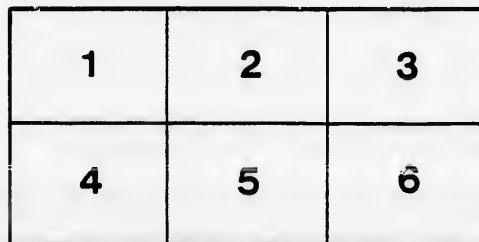
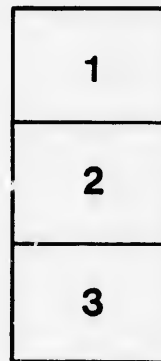
D. B. Weldon Library  
University of Western Ontario  
(Regional History Room)

The images appearing here are the best quality possible considering the condition and legibility of the original copy and in keeping with the filming contract specifications.

Original copies in printed paper covers are filmed beginning with the front cover and ending on the last page with a printed or illustrated impression, or the back cover when appropriate. All other original copies are filmed beginning on the first page with a printed or illustrated impression, and ending on the last page with a printed or illustrated impression.

The last recorded frame on each microfiche shall contain the symbol  $\rightarrow$  (meaning "CONTINUED"), or the symbol  $\nabla$  (meaning "END"), whichever applies.

Maps, plates, charts, etc., may be filmed at different reduction ratios. Those too large to be entirely included in one exposure are filmed beginning in the upper left hand corner, left to right and top to bottom, as many frames as required. The following diagrams illustrate the method:



L'exemplaire filmé fut reproduit grâce à la générosité de:

D. B. Weldon Library  
University of Western Ontario  
(Regional History Room)

Les images suivantes ont été reproduites avec le plus grand soin, compte tenu de la condition et de la netteté de l'exemplaire filmé, et en conformité avec les conditions du contrat de filmage.

Les exemplaires originaux dont la couverture en papier est imprimée sont filmés en commençant par le premier plat et en terminant soit par la dernière page qui comporte une empreinte d'impression ou d'illustration, soit par le second plat, selon le cas. Tous les autres exemplaires originaux sont filmés en commençant par la première page qui comporte une empreinte d'impression ou d'illustration et en terminant par la dernière page qui comporte une telle empreinte.

Un des symboles suivants apparaîtra sur la dernière image de chaque microfiche, selon le cas: le symbole  $\rightarrow$  signifie "A SUIVRE", le symbole  $\nabla$  signifie "FIN".

Les cartes, planches, tableaux, etc., peuvent être filmés à des taux de réduction différents. Lorsque le document est trop grand pour être reproduit en un seul cliché, il est filmé à partir de l'angle supérieur gauche, de gauche à droite, et de haut en bas, en prenant le nombre d'images nécessaire. Les diagrammes suivants illustrent la méthode.

rrata  
to

pelure,  
n à

# GRAND OPERA HOUSE

C. J. WHITNEY  
LESSEE

A. E. ROOTE  
MANAGER

## PROGRAMME

LONDON  
ONT.

No Fault is Found

Even by the most critical customers with our large assortment of Fall Suitings and Overcoatings, and you can't find fault with our prices or the fit we give you. Come in and see us.

DEEKS & CO.

TAILORS,  
393 Richmond Street

### OFFICE RESTAURANT

D. SARE, Proprietor

Best Wines, Liquors and Cigars

always on hand. Full course Dinner from 12 to 2.

**HOT MEALS** per order, at all hours.

**OYSTERS**, in any style,  
every day of the year.

We appreciate your patronage, and always do what's right.

### BREAD

IS THE STAFF  
OF LIFE

Too much care cannot be given to the selection of PURE, WHOLESOME and CLEANLY MADE BREAD.

"EUREKA" Bread needs only a trial to convince you. Manufactured by

**PARNELL-DEAN**  
STEAM BAKING CO.

Telephone 929. 75 BRUCE ST.

SEASON 1898-9

THURSDAY, NOV. 10th, 1898

## MCSORLEY'S TWIN

Rewritten and arranged in Three Acts,  
By WILMER & VINCENT,

Introducing the Popular Irish Comedian

BOBBY GAYLOR

### NOTICE

The limited space unrented in this Programme may be applied for at the Box Office. You read this, so would your advertisement be read. Keep yourself and business before the public. Theatre patrons are good customers for most business men.

## SMITH BROS.

STEAM, GAS and  
HOT WATER  
FITTERS

265 Dundas Street  
Telephone 538

## PLUMBERS

LONDON

THIS  
PROGRAMME

IS FROM THE PRESS OF

Heal & Fleming

172 KING STREET

WE SOLICIT YOUR  
PATRONAGE



TELEPHONE  
874

# THE LONDON FLORAL CO'Y

...DEALERS IN...

All Kinds of

## “CUT” FLOWERS

And Decorative Plants.

Theatre Parties a Specialty. 249 Dundas Street.

PHONE 493.

## SMOKE VIRGINIA

THE ONLY HONEST 5c CIGAR SOLD

H. McKENNA, 225 DUNDAS STREET.



You Contemplate Wedding



WHY not have the latest ideas? In catering we can save you trouble and expense. Are you giving a Bicycle Party, an At Home or Social? We offer inducements that are irresistible. Our Soda Water and Jersey Ice Cream has no equal. Our candies and Confectionery made fresh daily. If you wish dressed fowl or meats of any variety, leave your order with us, we can supply you on shortest notice. Oysters served in every style. Lunch rooms open till 12 p.m.

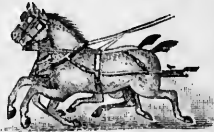
SPECIALTIES: Salads and Puddings, Hot and Cold Lunchees. SENT TO ANY PART OF THE CITY.

SHORT BROS. Phone 491 220 Dundas Street

## Stroyan's Mammoth Livery

BOARDING AND SALE STABLES

Phone No. 503



Open Day and Night

### HACKS, COUPES AND LIGHT LIVERY

A. G. STROYAN, Proprietor

CALL THE USHER WHEN IN WANT OF CAB OR COUPE

Full Line of... LONDON VIEWS

## ...SOUVENIRS...

Useful Wedding and Birthday Presents

## Yeo's China Hall

177 DUNDAS STREET

China and Glass Goods for all household purposes.

You are invited to call and inspect our new fall stock of Fancy China.



## Cast of Characters.

Dennis McSorley, a politician.....	Bobby Gaylor
Michael Clancy, his henchman.....	Frank Lalor
Otto Dunmore, a gent of leisure.....	Jas. McDuff
Owen Bills, McSorley's nephew.....	Burt Wesner
Phil A. Daley, reporter of "The Howler".....	Arthur B. Cline
Spaghetti Maccaroni, a Spaniard.....	N. O. Mann
Officer Porter, a policeman.....	Frank Rockwell
Lotta Doe, a widow of means.....	May Wentworth
Vera Little.....	distant relatives { Florence Hastings
Ima Wheeler.....	relatives { Caroline De Forrest
Sadie Woods.....	of { Anna Mayo
Winnie Mann.....	McSorley's, { Vernia Ross
Mrs. Jackson Harris, a lady of color.....	Bertha Hallet
Kate McSorley.....	the { Gracie Cummings
Duplicate McSorley.....	twins { Kattie Wolfe

Phone 897...

J. ELLIOTT HOLMES, L.D.S.

DENTIST

OFFICE: ROOM 3, DUFFIELD BLOCK, Cor. Dundas and Clarence Sts. LONDON.

## The Queen... of Autumn

REIGNS SUPREME

## J. GAMMAGE & SONS

## THE MAINE

Thing at the present is

## DEWEY

Laundry your Shirts, Collars, Cuffs and Handkerchiefs—if not, why not give us a trial and you won't

## HAV-ANA

more laundered elsewhere.

## THE PARISIAN STEAM LAUNDRY CO.

OF ONTARIO, LIMITED

73-75 DUNDAS STREET,

J. K. SPRY, Manager.

PHONE 559

## FAIRBAIRN

Opposite City Hall UP-STAIRS

## The Tailor

If you have your own cloth, bring it to me and I will make it up in the best possible style at a reasonable cost.

## Fall Suits and Overcoats

Prices sure to suit you as well as fit. A CALL SOLICITED.

## FAIRBAIRN, The Tailor

Opposite City Hall Richmond Street.

THAT WORD

## "BEST"

Means much in coal-dom. Some kinds—the kind we have—gives more heat to the ton than others. Some (ours) burns to a powdery ash, giving out all the sort of heat desired. Others (we don't keep it), turns to clinkers and causes trouble and annoyance.

TRY A TON AND SEE.

## CAMERON'S

YARD—Burwell and G. T. R. OFFICE—Hiscox Building



# THE TEGUMSEH

LONDON, ONT.



FIRST-CLASS  
IN ALL  
APPOINTMENTS.

SPECIAL RATES  
FOR COMPANIES

CHAS. W. DAVIS,  
Proprietor

## "WE WALK!" "WE DANCE!"

We Walk to Protect Labor. We Dance to Enjoy Ourselves.  
Everybody else should do the same.

It is no trouble to learn to walk at present, and we guarantee it will be no trouble to learn to dance, if you only call and make arrangements at the . . . . .

## New Palace Dancing Academy

422 RICHMOND STREET

COMPETENT TEACHERS. LIBERAL TERMS.  
Gentlemen, Monday Ev'g; Ladies, Tuesday Ev'g, at 8 o'clock. Children, Saturday Afternoon, at 3 o'clock.  
DAYTON & McCORMICK.

## King Richard III

IS NOT AT RICHMOND.

H. L. PEINE

Proprietor

Richmond Hotel

Is there and supplies his patrons  
with the best of everything.....

SPECIAL RATES TO THEATRICAL CO'S

## F. H. BUTLER Stock Broker

STOCKS, GRAINS AND PROVISIONS  
bought and sold for cash or on margin.  
Private wires to New York Stock Exchange and Chicago Board of Trade. Toronto and Montreal Stock Exchange quotations received by wire.

LONG DISTANCE TELEPHONE 1278

15-16 Masonic Temple, London

## GOING ...THE... ADVERTISER

SIGNS, BANNERS  
and WALL WORK 578  
RICHMOND ST

## E. J. PEARCE

Successor to E. J. BURKE

521 RICHMOND STREET

FULL LINE

Amateur  
Supplies

ALWAYS  
IN STOCK



A Man Wants to See You  
BETWEEN ACTS, AT



JERRY McDONALD'S  
131 KING STREET

\*\*\*\*\*

## SYNOPSIS.



- ACT I—McSorley's residence, New York City.  
ACT II—Reception room at Mrs. Doe's, New York City.  
ACT III—Lodge-room, "McSorley's Club,"  
Election Night.

### INCIDENTAL SPECIALTIES.

- ACT I—1. McSorley and Clancy. 2. Owen Bills. 3. Otto Dunmore and Sadie Wood.  
ACT II—1. Lottie Doe. 2. Vera Little.  
ACT III—1. The Twins. 2. Grand Finale.

### FOR W. B. McCALLUM.

- A. H. Westfall..... Acting Manager  
G. D. Johnston..... Business Manager  
Mark Davis..... Treasurer  
Burt Wesner..... Stage Manager  
A. A. Franklin..... Musical Director  
A. B. Cline..... Stage Manager

## The Famous Bell Orchestral Piano

IS USED EXCLUSIVELY IN THIS THEATRE.

\*\*\*\*\*

## Spiritual Meeting

WILL BE HELD IN

K. of P. HALL, S. W. Cor. Dundas  
and Clarence Sts.

SUNDAY AFTERNOON, AT 2:45 O'CLOCK

LECTURE AND TESTS BY H. M. FRENCH.

Come and see the phenomenon of Spiritualism demonstrated. We give sittings daily at our home, 260 Talbot street, from 10 to 5; also give a complete diagnosis of your disease, and an astrological reading of life, and put you on the road to success.

Come and See Us Without Fail.

## SLATER BROS. TAILORS

399 Richmond St. Telephone 844

FINE IMPORTED WOOLENS  
A SPECIALTY

LARGEST STOCK IN THE CITY ORDERS FINISHED PROMPTLY

BUCKWHEAT  
10c—PIPE—10c

JOE NOLAN'S OPERA  
CIGAR STORE

FALL weather is with us again  
and along with Fall comes  
COLDS ❄️❄️❄️

To know a cure for the same is very important.  
...By calling upon....

P. J. WATT

you can secure an infallible remedy.  
No well-regulated household should be without it.

TRADING STAMPS.

428 RICHMOND STREET, Next News Office

ESTABLISHED 1860.



T. FOX

THE ORIGINAL PAWNBROKER  
LEND'S MONEY

On DIAMONDS, WATCHES, JEWELRY and WEARING  
APPAREL, Etc. All business strictly private  
and confidential.

323 AND 325 CLARENCE ST.

P.S.—Unredeemed Watches, Diamond Rings,  
Guns, Revolvers, and Musical Goods on hand.  
Theatrical Costumes for sale or hire.

For Rent

**COMING!**

**SATURDAY, NOV. 12th**

MATINEE AND NIGHT.



**MR. DAVID HIGGINS**

AND

**Miss GEORGIE WALDRON**

In the beautiful play of Southern life,

**At Piney Ridge**

A romance of the mountains and villages of East Tennessee, with a wealth of beautiful scenery and effects.

**A Production Complete in Every Detail**

**PRICES.**

Matinee—Children 25c, Adults 50c.  
Night—25c, 50c and 75c. Seats now on sale.

**Friday, Nov. 11th**

THE GREATEST OF ALL  
COMIC OPERA SUCCESSES

**The Geisha**

FROM

**AUGUSTIN DALY'S**  
NEW YORK AND LONDON THEATRES.

**THE THEATRICAL EVENT OF THE SEASON**

**HEAR**

The Toy Duet. The Jewel of Asia. The Amorous Gold Fish. The Monkey on a Stick. The Interfering Parrot.

**SEE**

The Geisha Girls. The Blossom Fete. The Fortune Tellers. The House of Ten Thousand Joys.

**COSTLY DREAMS OF SCENIC ART. MAGNIFICENT GOWNS**

**Coming Soon**

Victorian Cross

Stranger in New York

Primrose & Dockstader's  
Minstrels

Two Little Vagrants

Finnegan's Ball

Jack and the Beanstalk



If the individual members of an audience would stop to think for just an instant, they would undoubtedly appreciate the fact that the habit of rising from their seat and leaving the theatre before the curtain falls, is a most annoying one, and one that should be stopped. We therefore beg our audiences to kindly remain in their seats until the close of the performance.



