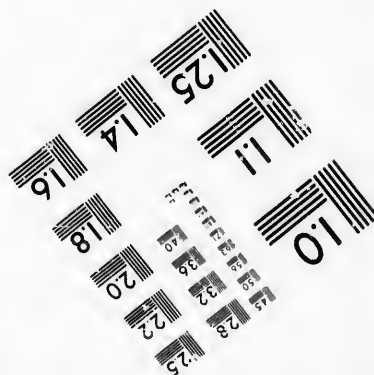
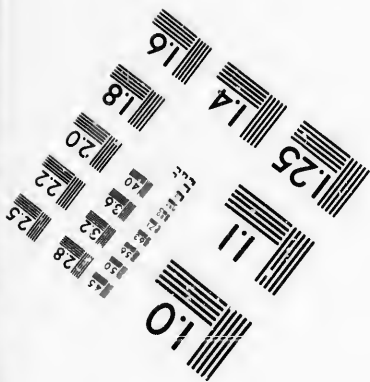
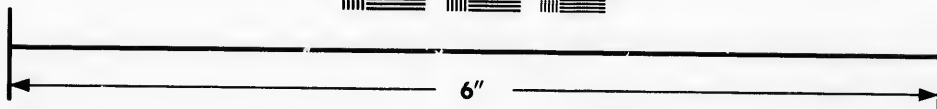
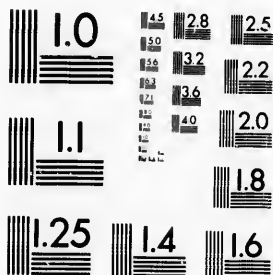


**IMAGE EVALUATION  
TEST TARGET (MT-3)**



**Photographic  
Sciences  
Corporation**

23 WEST MAIN STREET  
WEBSTER, N.Y. 14580  
(716) 872-4503

**CIHM/ICMH  
Microfiche  
Series.**

**CIHM/ICMH  
Collection de  
microfiches.**



Canadian Institute for Historical Microreproductions / Institut canadien de microreproductions historiques

**© 1986**

Technical and Bibliographic Notes/Notes techniques et bibliographiques

The Institute has attempted to obtain the best original copy available for filming. Features of this copy which may be bibliographically unique, which may alter any of the images in the reproduction, or which may significantly change the usual method of filming, are checked below.

L'Institut a microfilmé le meilleur exemplaire qu'il lui a été possible de se procurer. Les détails de cet exemplaire qui sont peut-être uniques du point de vue bibliographique, qui peuvent modifier une image reproduite, ou qui peuvent exiger une modification dans la méthode normale de filmage sont indiqués ci-dessous.

- Coloured covers/  
Couverture de couleur
- Covers damaged/  
Couverture endommagée
- Covers restored and/or laminated/  
Couverture restaurée et/ou pelliculée
- Cover title missing/  
Le titre de couverture manque
- Coloured maps/  
Cartes géographiques en couleur
- Coloured ink (i.e. other than blue or black)/  
Encre de couleur (i.e. autre que bleue ou noire)
- Coloured plates and/or illustrations/  
Planches et/ou illustrations en couleur
- Bound with other material/  
Relié avec d'autres documents
- Tight binding may cause shadows or distortion  
along interior margin/  
La reliure serrée peut causer de l'ombre ou de la  
distorsion le long de la marge intérieure
- Blank leaves added during restoration may  
appear within the text. Whenever possible, these  
have been omitted from filming/  
Il se peut que certaines pages blanches ajoutées  
lors d'une restauration apparaissent dans le texte,  
mais, lorsque cela était possible, ces pages n'ont  
pas été filmées.
- Additional comments:/ [Printed ephemera] [4] p.  
Commentaires supplémentaires:

- Coloured pages/  
Pages de couleur
- Pages damaged/  
Pages endommagées
- Pages restored and/or laminated/  
Pages restaurées et/ou pelliculées
- Pages discoloured, stained or foxed/  
Pages décolorées, tachetées ou piquées
- Pages detached/  
Pages détachées
- Showthrough/  
Transparence
- Quality of print varies/  
Qualité inégale de l'impression
- Includes supplementary material/  
Comprend du matériel supplémentaire
- Only edition available/  
Seule édition disponible
- Pages wholly or partially obscured by errata  
slips, tissues, etc., have been refilmed to  
ensure the best possible image/  
Les pages totalement ou partiellement  
obscurcies par un feuillet d'errata, une pelure,  
etc., ont été filmées à nouveau de façon à  
obtenir la meilleure image possible.

This item is filmed at the reduction ratio checked below/  
Ce document est filmé au taux de réduction indiqué ci-dessous.

10X	14X	18X	22X	26X	30X
<input type="checkbox"/>	<input type="checkbox"/>	<input checked="" type="checkbox"/>	<input type="checkbox"/>	<input type="checkbox"/>	<input type="checkbox"/>
12X	16X	20X	24X	28X	32X

The copy filmed here has been reproduced thanks to the generosity of:

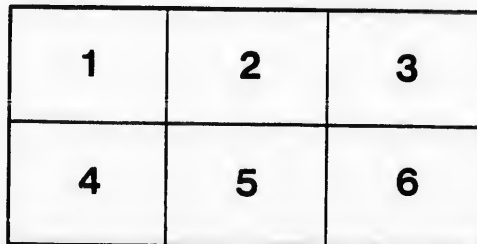
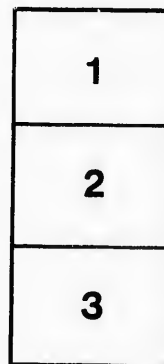
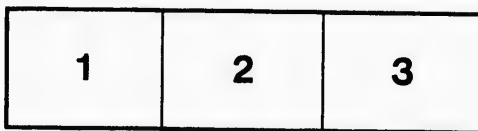
New Brunswick Museum  
Saint John

The images appearing here are the best quality possible considering the condition and legibility of the original copy and in keeping with the filming contract specifications.

Original copies in printed paper covers are filmed beginning with the front cover and ending on the last page with a printed or illustrated impression, or the back cover when appropriate. All other original copies are filmed beginning on the first page with a printed or illustrated impression, and ending on the last page with a printed or illustrated impression.

The last recorded frame on each microfiche shall contain the symbol  $\rightarrow$  (meaning "CONTINUED"), or the symbol  $\nabla$  (meaning "END"), whichever applies.

Maps, plates, charts, etc., may be filmed at different reduction ratios. Those too large to be entirely included in one exposure are filmed beginning in the upper left hand corner, left to right and top to bottom, as many frames as required. The following diagrams illustrate the method:



L'exemplaire filmé fut reproduit grâce à la générosité de:

New Brunswick Museum  
Saint John

Les images suivantes ont été reproduites avec le plus grand soin, compte tenu de la condition et de la netteté de l'exemplaire filmé, et en conformité avec les conditions du contrat de filmage.

Les exemplaires originaux dont la couverture en papier est imprimée sont filmés en commençant par le premier plat et en terminant soit par la dernière page qui comporte une empreinte d'impression ou d'illustration, soit par le second plat, selon le cas. Tous les autres exemplaires originaux sont filmés en commençant par la première page qui comporte une empreinte d'impression ou d'illustration et en terminant par la dernière page qui comporte une telle empreinte.

Un des symboles suivants apparaîtra sur la dernière image de chaque microfiche, selon le cas: le symbole  $\rightarrow$  signifie "A SUIVRE", le symbole  $\nabla$  signifie "FIN".

Les cartes, planches, tableaux, etc., peuvent être filmés à des taux de réduction différents. Lorsque le document est trop grand pour être reproduit en un seul cliché, il est filmé à partir de l'angle supérieur gauche, de gauche à droite, et de haut en bas, en prenant le nombre d'images nécessaire. Les diagrammes suivants illustrent la méthode.

ire  
détails  
es du  
modifier  
er une  
filmage

es

errata  
to

pelure,  
on à

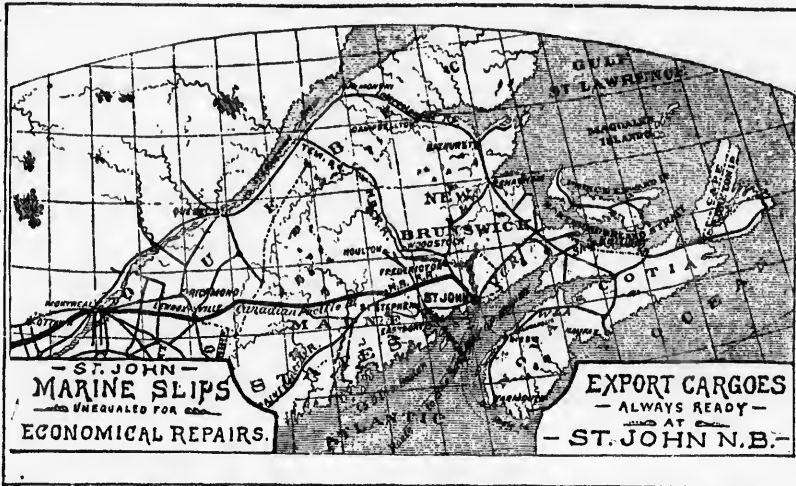


32X

Compliments of

Exhibition Association.

(See page 4.)



# EXHIBITION ASSOCIATION

OF THE CITY AND COUNTY OF

INCORPORATED 1889.

**ST. JOHN, NEW BRUNSWICK.**

INCORPORATED for the purpose of HOLDING EXHIBITIONS in the CITY of ST. JOHN.

ST. JOHN, N.B. BEING NOT ONLY MOST CENTRALLY SITUATED FOR THE RAILWAY SYSTEMS OF THE MARITIME PROVINCES, BUT ALSO THE ATLANTIC TERMINUS OF THE GREAT TRANS-CONTINENTAL ROUTE OF THE CANADIAN PACIFIC RAILWAY, AND OTHER COMPETING LINES. IS MOST ADMIRABLY SITUATED FOR HOLDING EXHIBITIONS OF ART, MANUFACTURES, AGRICULTURE, HORTICULTURE ETC.

THE ASSOCIATION HAVING EXTENSIVE AND CONVENIENTLY SITUATED GROUNDS, AS WELL AS AMPLE BUILDING ACCOMMODATION, PURPOSES HOLDING ANNUAL EXHIBITIONS, WITH COMPETITION OPEN TO THE WORLD, COMMENCING THE TWENTY-FOURTH OF SEPTEMBER 1890. AND INCORPORATING SOME NEW AND ATTRACTIVE FEATURES FOR THE PUBLIC ENTERTAINMENT.

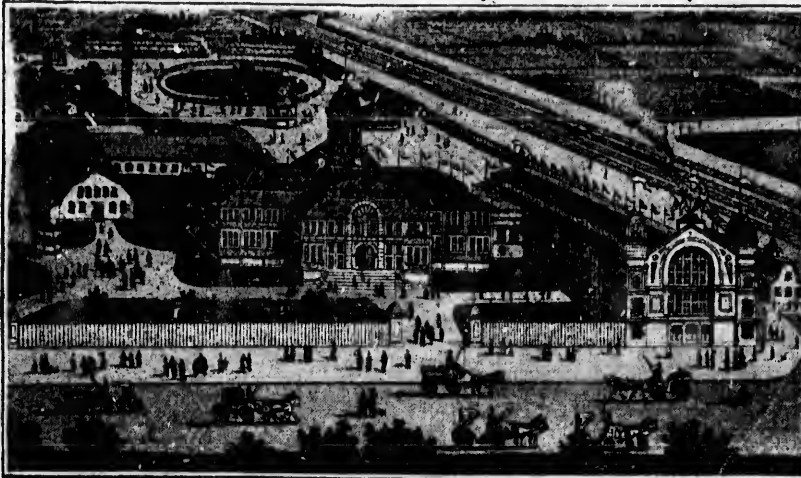
INVITES CORRESPONDENCE FROM ALL PERSONS INTRODUCING NOVELTIES SUITABLE FOR THESE PURPOSES, AS WELL AS EXHIBITORS IN ALL CLASSES. FOR APPLICATION FORMS AND OTHER INFORMATION, ADDRESS,

**IRA CORNWALL.**

SECRETARY EXHIBITION ASSOCIATION, ST. JOHN, N.B.

ST JOHN EXHIBITION EASY OF ACCESS  
AND CENTRAL FOR UNITED STATES

Every  
facilities  
for  
BUSINESS  
AT  
ST  
JOHN  
EXHIBITION



EXHIBITION BUILDING

FOR  
**TOURISTS**  
AND  
**HEALTH**  
SEEKERS  
THE SUMMER CLIMATE  
ST. JOHN,  
CANNOT BE EXCELLED  
ON THIS CONTINENT, WHILE  
VARIOUS AVENUES FOR  
REACHING THE CITY BY LAND  
AND WATER, PLACE IT AT THE  
ECONOMICAL AND POPULAR

**CITY OF ST. JOHN, NEW**  
CANADA

THE GREAT ATLANTIC TERMINUS OF THE CANADIAN PACIFIC, THE ONLY RAILWAY RUNNING ON ITS OWN  
OTHER COMPETING LINES. (SEE MAP). FOR INFORMATION RELATIVE TO ITS CLIMATE, ITS  
ADDRESS: **IRA CORNWELL**

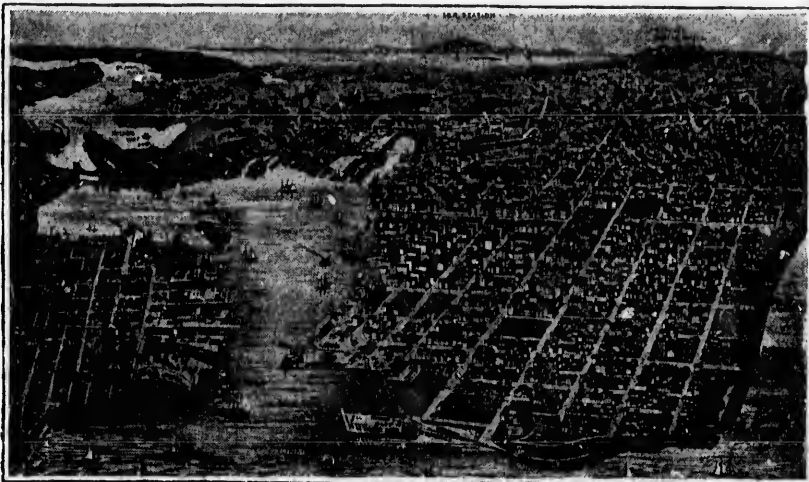


St. John Harbour

A PAMPHLET ISSUED BY THE BOARD OF TRADE SHOWING THE WONDERFUL RECORD OF SAFETY IN NAVIGATING THE BAY OF SAINT JOHN

EASY OF ACCESS BY SEA AND LAND.  
 UNITED STATES AND CANADA TRADE.

FOR  
**TOURISTS**  
 AND  
**HEALTH**  
**SEEKERS,**  
 THE SUMMER CLIMATE OF  
**ST. JOHN,**  
 CANNOT BE EXCELLED, UPON  
 THIS CONTINENT, WHILE THE  
 VARIOUS AVENUES FOR REACH-  
 ING THE CITY BY LAND AND  
 WATER, PLACE IT AT THE HEAD OF  
 ECONOMICAL AND POPULAR RESORTS.



BIRD'S EYE VIEW OF ST. JOHN.

**ST. JOHN, NEW BRUNSWICK.**  
 CANADA.

RAILWAY RUNNING ON ITS OWN RAILS FROM THE ATLANTIC TO THE PACIFIC OCEANS, ALSO OF SEVERAL  
 ADVANTAGES TO ITS CLIMATE, ITS HARBOUR, ITS POSITION AS A PORT FOR EXPORT AND IMPORT TRADE, &c.  
**ST. JOHN, N.B.** SECRETARY BOARD OF TRADE, ST. JOHN, N.B.



St. John Harbour

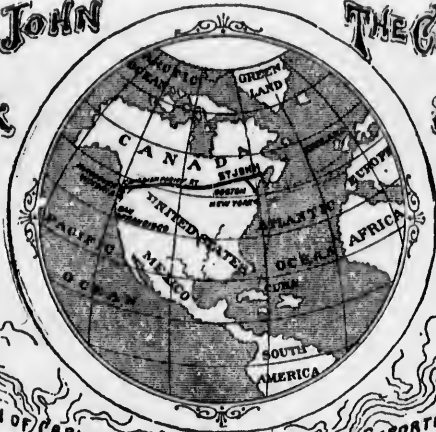
RECORD OF SAFETY IN NAVIGATION WILL BE FURNISHED  
 CONCERNING THE BAY OF FUNDY. ON APPLICATION TO THE SECRETARY OF THE BOARD OF TRADE,  
**SAINT JOHN, N.B.**

EXHIBITORS  
 Should  
 Establish  
 AGENCIES  
 THROUGH  
**ST. JOHN**  
 EXHIBITION

MUSE  
1957

FOR QUICK DESPATCH. SHIP VIA ST. JOHN.

THE CITY OF ST. JOHN  
NEW BRUNSWICK  
CANADA.



THE CANADIAN ATLANTIC  
SEAPORT, OPEN ALL THE  
YEAR ROUND.

THE ATTENTION OF CAPITALISTS, MANUFACTURERS, EXPORTERS, IMPORTERS, SUMMER TOURISTS, HEALTH SEEKERS AND OTHERS, IS CALLED TO THE ADVANTAGES OFFERED, FOR THEIR SEVERAL INTERESTS BY THIS CITY. FOR FULL INFORMATION, ADDRESS.

IRA CORNWALL - Secretary Board of Trade - ST. JOHN, N. B.

ST. JOHN HARBOUR NEVER FREEZES AND IS ALWAYS SAFE.

FOR CHEAP MARINE INSURANCE - SHIP VIA ST. JOHN.

# Canada's International Exhibition, 1890.

SAINT JOHN, N. B.

## OPENING SEPT. 24,

CONTINUES UNTIL OCTOBER 4.

COMPETITION OPEN TO THE WORLD.

SPACE AND POWER FREE OF CHARGE.

Largest permanent Exhibition Building accomodation in the Maritime Provinces. Extensive and conveniently situated grounds. Splendid speeding track. Premium Lists most comprehensive, covering all important branches of Agriculture, Horticulture, Arts, Manufactures, etc. The largest array of special attractions both on grounds and throughout the City, ever offered in the Maritime Provinces.

Ample accomodations for visitors at reasonable rates during Fair weeks.

Special Excursion Rates on all Railways and Steamers.

For full information, application blanks, Prize Lists, etc., address.

THE SECRETARY EXHIBITION ASSOCIATION, ST. JOHN, N. B.

FOR EXPORT AND IMPORT TRADE GENERALLY. THE GEOGRAPHICAL POSITION OF THE CITY ALONE, ASSURES HER POSITION AS THE LEADING EASTERN SEA PORT OF CANADA.

Exhibitions - Saint John CB DOC



