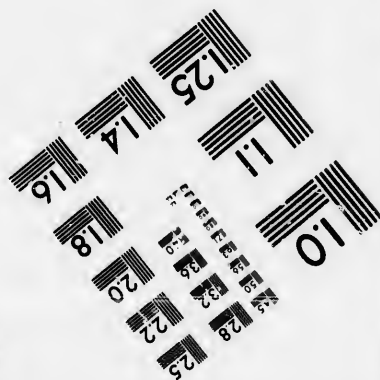
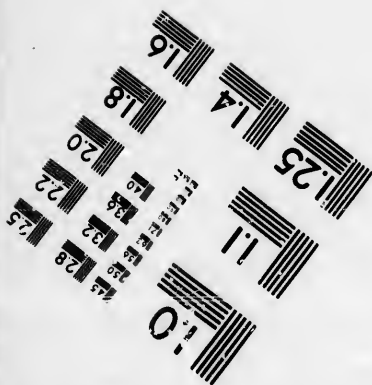
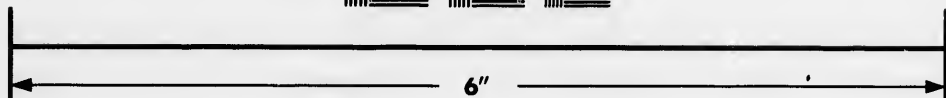
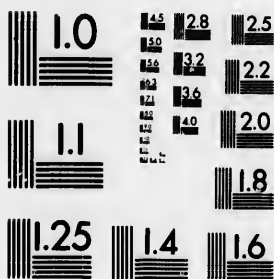


**IMAGE EVALUATION  
TEST TARGET (MT-3)**



**Photographic  
Sciences  
Corporation**

25 WEST MAIN STREET  
WEBSTER, N.Y. 14580  
(716) 872-4503



**CIHM/ICMH  
Microfiche  
Series.**

**CIHM/ICMH  
Collection de  
microfiches.**



Canadian Institute for Historical Microreproductions / Institut canadien de microreproductions historiques



**© 1985**

Technical and Bibliographic Notes/Notes techniques et bibliographiques

The Institute has attempted to obtain the best original copy available for filming. Features of this copy which may be bibliographically unique, which may alter any of the images in the reproduction, or which may significantly change the usual method of filming, are checked below.

L'Institut a microfilmé le meilleur exemplaire qu'il lui a été possible de se procurer. Les détails de cet exemplaire qui sont peut-être uniques du point de vue bibliographique, qui peuvent modifier une image reproduite, ou qui peuvent exiger une modification dans la méthode normale de filmage sont indiqués ci-dessous.

- Coloured covers/  
Couverture de couleur
- Covers damaged/  
Couverture endommagée
- Covers restored and/or laminated/  
Couverture restaurée et/ou pelliculée
- Cover title missing/  
Le titre de couverture manque
- Coloured maps/  
Cartes géographiques en couleur
- Coloured ink (i.e. other than blue or black)/  
Encre de couleur (i.e. autre que bleue ou noire)
- Coloured plates and/or illustrations/  
Planches et/ou illustrations en couleur
- Bound with other material/  
Relié avec d'autres documents
- Tight binding may cause shadows or distortion  
along interior margin/  
La reliure serrée peut causer de l'ombre ou de la  
distorsion le long de la marge intérieure
- Blank leaves added during restoration may  
appear within the text. Whenever possible, these  
have been omitted from filming/  
Il se peut que certaines pages blanches ajoutées  
lors d'une restauration apparaissent dans le texte,  
mais, lorsque cela était possible, ces pages n'ont  
pas été filmées.
- Additional comments: / 1 sheet (verso blank)  
Commentaires supplémentaires:

- Coloured pages/  
Pages de couleur
- Pages damaged/  
Pages endommagées
- Pages restored and/or laminated/  
Pages restaurées et/ou pelliculées
- Pages discoloured, stained or foxed/  
Pages décolorées, tachetées ou piquées
- Pages detached/  
Pages détachées
- Showthrough/  
Transparence
- Quality of print varies/  
Qualité inégale de l'impression
- Includes supplementary material/  
Comprend du matériel supplémentaire
- Only edition available/  
Seule édition disponible
- Pages wholly or partially obscured by errata  
slips, tissues, etc., have been refilmed to  
ensure the best possible image/  
Les pages totalement ou partiellement  
obscurcies par un feuillet d'errata, une pelure,  
etc., ont été filmées à nouveau de façon à  
obtenir la meilleure image possible.

This item is filmed at the reduction ratio checked below/  
Ce document est filmé au taux de réduction indiqué ci-dessous.

10X	12X	14X	16X	18X	20X	22X	24X	26X	28X	30X	32X
								✓			

The copy filmed here has been reproduced thanks to the generosity of:

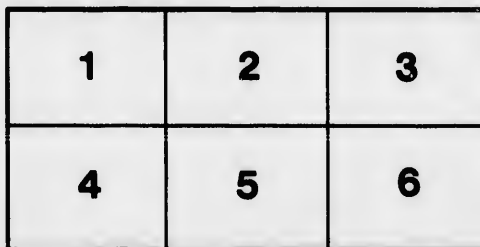
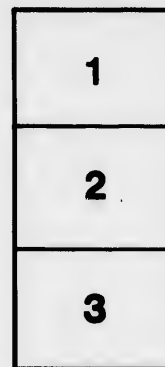
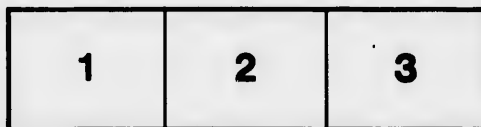
Library of the Public  
Archives of Canada

The images appearing here are the best quality possible considering the condition and legibility of the original copy and in keeping with the filming contract specifications.

Original copies in printed paper covers are filmed beginning with the front cover and ending on the last page with a printed or illustrated impression, or the back cover when appropriate. All other original copies are filmed beginning on the first page with a printed or illustrated impression, and ending on the last page with a printed or illustrated impression.

The last recorded frame on each microfiche shall contain the symbol  $\rightarrow$  (meaning "CONTINUED"), or the symbol  $\nabla$  (meaning "END"), whichever applies.

Maps, plates, charts, etc., may be filmed at different reduction ratios. Those too large to be entirely included in one exposure are filmed beginning in the upper left hand corner, left to right and top to bottom, as many frames as required. The following diagrams illustrate the method:



L'exemplaire filmé fut reproduit grâce à la générosité de:

La bibliothèque des Archives  
publiques du Canada

Les images suivantes ont été reproduites avec le plus grand soin, compte tenu de la condition et de la netteté de l'exemplaire filmé, et en conformité avec les conditions du contrat de filmage.

Les exemplaires originaux dont la couverture en papier est imprimée sont filmés en commençant par le premier plat et en terminant soit par la dernière page qui comporte une empreinte d'impression ou d'illustration, soit par le second plat, selon le cas. Tous les autres exemplaires originaux sont filmés en commençant par la première page qui comporte une empreinte d'impression ou d'illustration et en terminant par la dernière page qui comporte une telle empreinte.

Un des symboles suivants apparaîtra sur la dernière image de chaque microfiche, selon le cas: le symbole  $\rightarrow$  signifie "A SUIVRE", le symbole  $\nabla$  signifie "FIN".

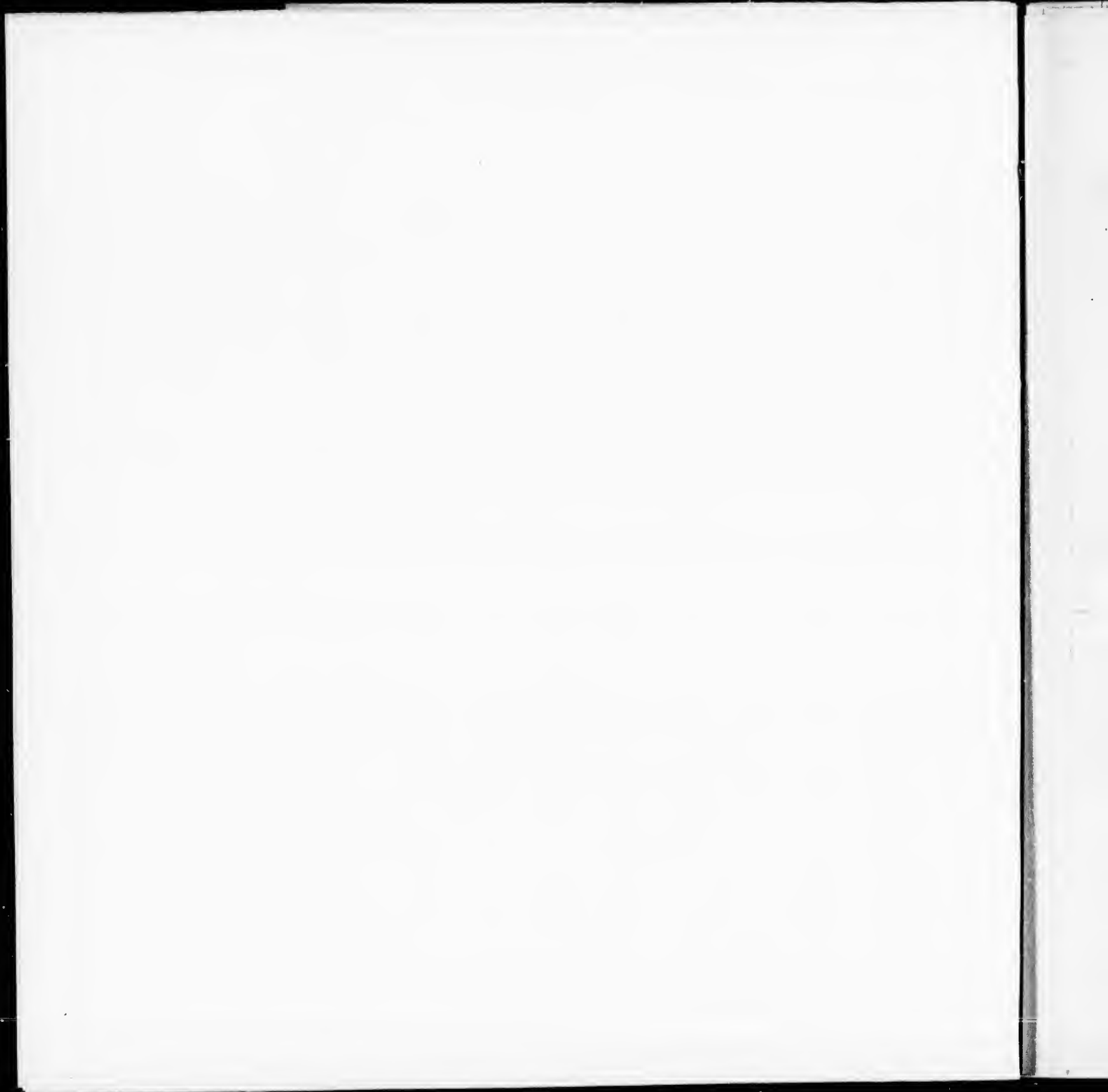
Les cartes, planches, tableaux, etc., peuvent être filmés à des taux de réduction différents. Lorsque le document est trop grand pour être reproduit en un seul cliché, il est filmé à partir de l'angle supérieur gauche, de gauche à droite, et de haut en bas, en prenant le nombre d'images nécessaire. Les diagrammes suivants illustrent la méthode.

errata  
to

pelure,  
n à



32X



## 831, to June, 1840, both inclusive.

YEA	Moore.	Sarnia.	Warwick.	Wild Land Assessment.	Sundries.	TOTALS.	REMARKS.
6 Months				30 6 8		398 5 7	
31st Dec' 18				255 8 4*		968 4 4	
18				139 3 11*		868 16 10	* The amounts distinguished thus (*) include the Sheriff's sales of land sold for taxes.
6 Months				186 5 8*		586 0 5	
30th June						2821 7 2	TOTAL Receipts of the three years ending 30th June, 1834.
						940 9 0½	AVERAGE annual receipts of the three years ending 30th June, 1834.
6 Months	13 11 4		19 11 4	186 5 8*		586 0 5	
31st Dec' 18	39 13 4	16 19 9	51 6 7	180 8 5*	4 5 0	1191 11 7	
18	24 3 7	10 5 5½	20 10 8½	*78 6 0½		1320 2 3	
6 Months						695 6 5½	
30th June						3793 0 8½	TOTAL Receipts of the three years ending 30th June, 1837.
						1264 6 10½	AVERAGE annual receipts of the three years ending 30th June, 1837.
6 Months	24 3 7	10 5 5½	20 10 8½	*78 6 0½		695 6 5½	
31st Dec' 18	48 16 9	23 14 9	48 17 9	95 8 11		1474 7 2	
18	55 5 10	39 5 8	49 1 8	123 5 0		1869 4 6	The Receipts for the year (1839) and the following period of 6 months (of 1840) are increased by the sum of £770 4 10½, from the additional rate of ¼d in the pound: the income of the District for these periods, exclusive of this additional rate, would have been £1370 7 9½ for 1839, and £793 7 9½ for the six months of 1840.
6 Months	1833 9 4½	20 6 11	28 18 2	73 8 9½	13 16 4½	1015 0 9	
30th June						5053 18 10½	TOTAL Receipts of the three years ending 30th June, 1840.
						1684 12 11½	AVERAGE annual receipts of the three years ending 30th June, 1840.
						4933 9 3	
						1444 9 9	

Receipts of the last period of three years, to correspond with the

of the three years ending 30th June, 1840,.....

Receipts of the three years ending 30th June, 1840,.....

## Abstract Statement of the Annual Receipts in

YEAR.	Sandwich.	Malden.	Colchester.	Gosfield.	Mersea.	Maidstone and Rochester.	Howard.	Sombra.	Camden, Dawn and Zone.	Dover.
6 Months ending } 31st Dec'r, 1831. }	£ s. d. 93 17 6½	51 0 7½	29 8 9	24 13 4½	12 16 4½	7 7 3½	29 17 7½	13 19 0½	16 7 4½	
1832.	176 16 7	79 13 3	56 12 0	58 16 2	23 19 1	14 16 2	61 16 1	22 12 10	39 12 2	
1833.	172 4 1	77 17 3	47 5 1	58 17 10	24 5 9	15 17 4	70 10 6	24 8 3	30 8 8	
6 Months ending } 30th June, 1834. }	90 2 3½	39 12 2	26 14 10½	31 17 11½	12 15 2	9 12 6	40 4 2	13 5 5½	17 16 7½	
6 Months ending } 31st Dec'r, 1834. }	90 2 3½	39 12 2	26 14 10½	31 17 11½	12 15 2	9 12 6	40 4 2	13 5 5½	17 16 7½	26 1
1835.	219 0 9	89 5 6	64 6 9	77 0 10	29 4 9	23 12 0	88 6 8	29 12 8	13 3 1	29 1
1836.	212 14 7	82 8 11	67 17 10	80 15 8	31 3 0	34 0 2	88 17 2	33 11 8	12 12 3	
6 Months ending } 30th June, 1837. }	119 12 2	41 0 11	36 7 11	43 3 5	19 16 9	21 3 1½	46 8 1	16 3 11½	8 3 3½	19
6 Months ending } 31st Dec'r, 1837. }	119 12 2	41 0 11	36 7 11	43 3 5	19 16 9	21 3 1½	46 8 1	16 3 11½	8 3 3½	19
1838.	269 10 3	99 2 5	77 19 4	91 5 4	42 4 3	45 10 8	99 19 7	40 13 10	16 3 0	38
1839.	346 4 1	116 14 0	100 11 3	108 9 9	56 10 4	60 18 7	136 2 4	52 13 4	18 2 11	52 1
6 Months ending } 30th June, 1840. }	178 5 4½	94 17 2	57 11 7½	56 16 6½	31 15 10½	31 5 8½	72 8 0½	28 19 10	11 16 0½	29

**MEMORANDUM.**—On reference to the "Remarks," referring to the receipts of the year 1839 and the 6 months of 1840, it will

(No. 1.)

## Receipts in the Treasury of the Western District, from July, 183

Sombra.	Camden, Dawn and Zone.	Dawn.	Zone.	Chatham.	Raleigh.	Harwich,	Romney	East Tilbury,	West Tilbury.	Dover.	Orford,	Plympton,	Moore.
3 19 0½	16 7 4½			10 8 2½	26 1 5½	12 17 6	13 1 1½			15 1 1	11 1 9		
2 12 10	39 12 2			22 7 7	52 12 9	26 12 0	23 7 9			27 0 6	26 8 7		
4 8 3	30 8 8		18 14 8	28 16 2	53 3 4	27 11 8	25 3 5			25 13 8	28 15 11		
3 5 5½	17 16 7½		13 8 1½	13 17 4½	31 15 11½	13 10 10½	5 2 9½	8 10 3½		15 13 0½	15 15 1		
3 5 5½	17 16 7½		13 8 1½	13 17 4½	31 15 11½	13 10 10½	5 2 9½	8 10 3½		15 13 0½	15 15 1		
9 12 8	13 3 1	26 18 0	36 19 7	27 3 5	75 8 11	46 10 9	12 5 8	27 11 10		38 18 7	36 1 0	16 9 9	13 11
3 11 8	12 12 3	29 19 8	50 8 7	35 1 11	76 8 2	49 11 2	16 4 0	35 18 8		36 11 9	38 5 8	26 11 6	39 13
3 11½	8 3 3½	19 6 5½	22 4 0	18 15 6	44 17 1½	28 16 8½	8 8 1	13 12 2½		20 16 1½	19 1 3½	14 3 11½	24 3
6 3 11½	8 3 3½	19 6 5½	22 4 0	18 15 6	44 17 1½	28 16 8½	8 8 1	13 12 2½		20 16 1½	19 1 3½	14 3 11½	24 3
0 13 10	16 3 0	38 9 9	51 4 5	43 17 11	97 7 0	77 1 0	15 7 8	17 7 4	10 18 3	47 6 8	47 3 8	28 16 8	48 16
2 13 4	18 2 11	52 11 10	69 7 7	57 18 11	112 10 10	101 11 0	19 5 11	24 2 6	13 17 10	52 16 0	62 12 2	39 5 2	55 5
8 19 10	11 16 0½	29 4 5½	38 2 0½	31 10 1½	61 17 5	57 6 8	11 16 6½	12 9 7½	8 1 9½	29 6 6½	31 6 9½	20 2 10	33 9

and the 6 months of 1840, it will be seen that in the above Abstract, the *additional Rate* of ½d in the pound is included in those periods; *exclusive of that Rate*, the receipts or disbursements of the same period, should be as follows, viz:

TOTAL Receipts of the  
AVERAGE annual Recei



# July, 1831, to June, 1840, both inclusive.

	Plympton,	Moore.	Sarnia.	Warwick.	Wild Land Assessment.	Sundries.	TOTALS.	REMARKS.	
					30 6 8		398 5 7		
					255 8 4*		968 4 4	* The amounts distinguished thus (*) include the Sheriff's sales of land sold for taxes.	
					139 3 11*		868 16 10		
					186 5 8*		586 0 5		
							2821 7 2	TOTAL Receipts of the three years ending 30th June, 1834.	
							940 9 0½	AVERAGE annual receipts of the three years ending 30th June, 1834.	
					186 5 8*		586 0 5		
	16 9 9	13 11 4		19 11 4	180 8 5*		1191 11 7		
	5 8	26 11 6	16 19 9	51 6 7	168 13 7*	4 5 0	1320 2 3		
	1 8½	14 3 11½	24 3 7	10 5 5½	20 10 8½	*78 6 0½	695 6 5½		
							3793 0 8½	TOTAL Receipts of the three years ending 30th June, 1837.	
							1264 6 10½	AVERAGE annual receipts of the three years ending 30th June, 1837.	
	1 8½	14 3 11½	24 3 7	10 5 5½	20 10 8½	*78 6 0½	695 6 5½	The Receipts for the year (1839) and the following period of 6 months (of 1840) are increased by the sum of £770 4 10½, from the additional rate of ¼d in the pound: the income of the District for these periods, exclusive of this additional rate, would have been £1370 7 9½ for 1839, and £793 7 9½ for the six months of 1840.	
	3 8	28 16 8	48 16 9	23 14 9	48 17 9	95 8 11	1474 7 2		
	2 2	39 5 2	55 5 10	39 5 8	49 1 8	123 5 0	1869 4 6		
	6 9½	20 2 10	33 9 4½	20 6 11	28 18 2	73 8 9½	1015 0 9		
							5053 18 10½	TOTAL Receipts of the three years ending 30th June, 1840.	
							1684 12 11½	AVERAGE annual receipts of the three years ending 30th June, 1840.	
of that Rate, the receipts of the last period of three years, to correspond with the									
TOTAL Receipts of the three years ending 30th June, 1840,.....							4333 9 3		
AVERAGE annual Receipts of the three years ending 30th June, 1840,.....							1444 9 9		

