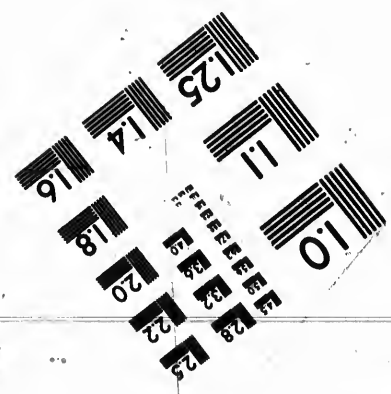
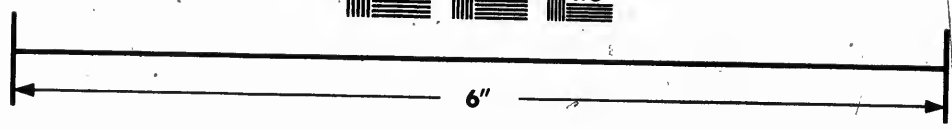
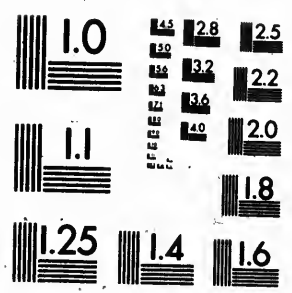


**IMAGE EVALUATION
TEST TARGET (MT-3)**



**Photographic
Sciences
Corporation**

23 WEST MAIN STREET
WEBSTER, N.Y. 14590
(716) 872-4503

12.8
13.2
2.2
2.0

**CIHM
Microfiche
Series
(Monographs)**

**ICMH
Collection de
microfiches
(monographies)**



Canadian Institute for Historical Microreproductions / Institut canadien de microreproductions historiques

01

© 1992

Technical and Bibliographic Notes / Notes techniques et bibliographiques

The Institute has attempted to obtain the best original copy available for filming. Features of this copy which may be bibliographically unique, which may alter any of the images in the reproduction, or which may significantly change the usual method of filming, are checked below.

L'Institut a microfilmé le meilleur exemplaire qu'il lui a été possible de se procurer. Les détails de cet exemplaire qui sont peut-être uniques du point de vue bibliographique, qui peuvent modifier une image reproduite, ou qui peuvent exiger une modification dans la méthode normale de filmage sont indiqués ci-dessous.

Coloured covers/
Couverture de couleur

Covers damaged/
Couverture endommagée

Covers restored and/or laminated/
Couverture restaurée et/ou pelliculée

Cover title missing/
Le titre de couverture manque

Coloured maps/
Cartes géographiques en couleur

Coloured ink (i.e. other than blue or black)/
Encre de couleur (i.e. autre que bleue ou noire)

Coloured plates and/or illustrations/
Planches et/ou illustrations en couleur

Bound with other material/
Relié avec d'autres documents

Tight binding may cause shadows or distortion
along interior margin/
La reliure serrée peut causer de l'ombre ou de la
distorsion le long de la marge intérieure

Blank leaves added during restoration may appear
within the text. Whenever possible, these have
been omitted from filming/
Il se peut que certaines pages blanches ajoutées
lors d'une restauration apparaissent dans le texte,
mais, lorsque cela était possible, ces pages n'ont
pas été filmées.

Additional comments:/
Commentaires supplémentaires:

There are some creases in the middle of the pages.

Coloured pages/
Pages de couleur

Pages damaged/
Pages endommagées

Pages restored and/or laminated/
Pages restaurées et/ou pelliculées

Pages discoloured, stained or foxed/
Pages décolorées, tachetées ou piquées

Pages detached/
Pages détachées

Showthrough/
Transparence

Quality of print varies/
Qualité inégale de l'impression

Continuous pagination/
Pagination continue

Includes index(es)/
Comprend un (des) index

Title on header taken from:/
Le titre de l'en-tête provient:

Title page of issue/
Page de titre de la livraison

Caption of issue/
Titre de départ de la livraison

Masthead/
Générique (périodiques) de la livraison

This item is filmed at the reduction ratio checked below/
Ce document est filmé au taux de réduction indiqué ci-dessous.

10X	12X	14X	16X	18X	20X	22X	24X	26X	28X	30X	32X
										✓	

The copy filmed here has been reproduced thanks to the generosity of:

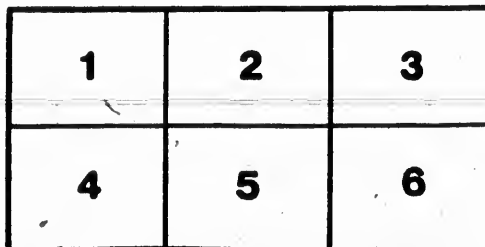
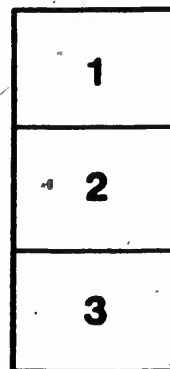
Manuscript Division,
National Archives of Canada

The images appearing here are the best quality possible considering the condition and legibility of the original copy and in keeping with the filming contract specifications.

Original copies in printed paper covers are filmed beginning with the front cover and ending on the last page with a printed or illustrated impression, or the back cover when appropriate. All other original copies are filmed beginning on the first page with a printed or illustrated impression, and ending on the last page with a printed or illustrated impression.

The last recorded frame on each microfiche shall contain the symbol \rightarrow (meaning "CONTINUED"), or the symbol ∇ (meaning "END"), whichever applies.

Maps, plates, charts, etc., may be filmed at different reduction ratios. Those too large to be entirely included in one exposure are filmed beginning in the upper left hand corner, left to right and top to bottom, as many frames as required. The following diagrams illustrate the method:



L'exemplaire filmé fut reproduit grâce à la générosité de:

Division des manuscrits,
Archives nationales du Canada

Les images suivantes ont été reproduites avec le plus grand soin, compte tenu de la condition et de la netteté de l'exemplaire filmé, et en conformité avec les conditions du contrat de filmage.

Les exemplaires originaux dont la couverture en papier est imprimée sont filmés en commençant par le premier plat et en terminant soit par la dernière page qui comporte une empreinte d'impression ou d'illustration, soit par le second plat, selon le cas. Tous les autres exemplaires originaux sont filmés en commençant par la première page qui comporte une empreinte d'impression ou d'illustration et en terminant par la dernière page qui comporte une telle empreinte.

Un des symboles suivants apparaîtra sur la dernière image de chaque microfiche, selon le cas: le symbole \rightarrow signifie "A SUIVRE", le symbole ∇ signifie "FIN".

Les cartes, planches, tableaux, etc., peuvent être filmés à des taux de réduction différents. Lorsque le document est trop grand pour être reproduit en un seul cliché, il est filmé à partir de l'angle supérieur gauche, de gauche à droite, et de haut en bas, en prenant le nombre d'images nécessaire. Les diagrammes suivants illustrent la méthode.

3-3-

GENERAL CONDITIONS
FOR THE MONTREAL DISTRICT
AGRICULTURAL SOCIETIES,
CATTLE SHOWS,
Ploughing Matches, &c. &c. &c.

As approved and resolved by the Committee on the 14th April, 1829.

GENERAL CONDITIONS FOR CATTLE SHOWS.

- 1.—That no more than three premiums be offered in the same class.
- 2.—That no person shall be entitled to receive more than one premium in the same class.
- 3.—That no animal or lot can obtain the same premium a second time.
- 4.—That separate premiums be offered to Canadian Practical Farmers, for Neat Cattle of Canadian, or improved Canadian Breed, and if any difference of opinion should arise, as to the identity of the Breed, the Committee shall decide.
- 5.—That no Cow will be entitled to a premium, unless the judges are satisfied, she shall have produced a Calf on or after the first of January preceding, or be evidently with Calf at the time of the show.
- 6.—That *Breed Mares* shall be disqualified unless their Colts are brought forward with them, to enable the judge more accurately to determine the merit of the Animal as a *Brood Mare*.
- 7.—That no person be qualified to receive premiums on Cows, Heifers, Steers, Sheep or Geldings; except Farmers.
- 8.—That no person obtaining premiums on Male Animals shall refuse the use of such Animal to a reasonable number of applicants, at a moderate charge, viz:—Stallions fit for the Saddle—not over *Twelve Dollars*; Fit for Draft—not over *Four Dollars*. Bulls and Rams—not over *Half a Dollar* each.
- 9.—That in future there shall be only one annual District Cattle Show to be held in September, except for Fat Animals which are to be shown in the winter.
- 10.—That all Animals entered in the same class, shall be kept together on the show ground, not allowing other stock to intermix in order that the judges may be able to compare, and more accurately determine the comparative merit of each.
- 11.—That the judges shall be appointed with the concurrence of at least Five Members of the Committee, that they shall be sworn, and no person act as judge, who is directly or indirectly interested in the decision.
- 12.—That each candidate or person appearing for him, must enter his stock with the Secretary in their proper class, on or before 11 o'Clock, A. M., on the day of show. The Secretary to be at the place at 9 o'Clock in the morning for that purpose.

CONDITIONS FOR THE DISTRICT PLOUGHING MATCHES.

- 1.—Any Candidate shall be disqualified, whose soil is settled, by any other means, except the Plough, or the Foot of the Plough-Man, as the Plough-works, or who suffers any assistance, setting of irons, or otherwise, to be given to the Plough-man.
 - 2.—Any person having obtained first premiums, at any former District Ploughing-match shall be disqualified; but such persons may compete in a separate class, for honorary or other reward.
 - 3.—The premiums shall be awarded to the Candidates who shall perform the work in the shortest space of time, and in the best manner.
- N. B.—The Judges appointed as for the Cattle shows.

GENERAL CONDITIONS FOR GRAIN AND GREEN CROPS, &c. &c.

- 1.—Any claimants for premiums on Grain or Green crops, whose farm generally does not appear to the judge to be well managed, in proportion to the time they may have been in possession of it, shall be disqualified.
- 2.—That premiums offered for Wheat shall only be adjudged where the wheat has been sowed after green crop or summer fallow. This rule however, not to be enforced before the next year.

PREMIUMS OFFERED TO CANADIAN PRACTICAL FARMERS ONLY, IN THE COUNTY OF MONTREAL.

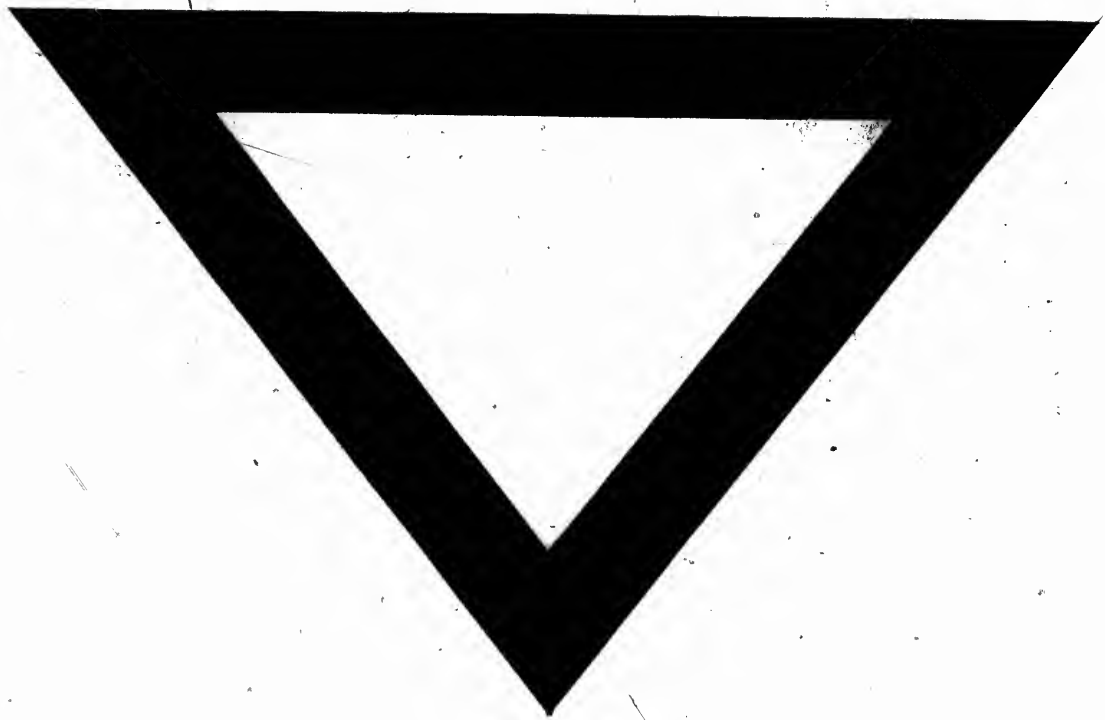
- 1.—Three premiums offered to *Canadian Practical Farmers*, for well managed Farms generally. The Judges to inspect the Tillage, Drains, Fences, Stock and Barns of each competitor, and report accordingly.
- 2.—Three premiums offered to *Canadian Practical Farmers*, for the greatest quantity of summer Fallow. The Judges shall be particular, that it is well Ploughed, and clean from all kinds of grass and weeds.

INSTRUCTIONS TO THE JUDGES AT THE CATTLE SHOWS, &c. &c.

You are to decide which is the best Animal, or lot of Animals in each class, having regard in forming your judgment to excellence and utility of form, quantity of flesh, lightness of skull, propensity to milk or fatten, and early maturity; also, in Sheep, to quantity and quality of wool. Having signed your adjudication, you are not to mention your decision until announced to the Committee, and you are not to disclose the opinions of each other, previous to your report, and the decision of the majority shall be conclusive. You shall withhold any premium when there shall not appear to be sufficient merit in the Animal or its offspring, you shall number the lots in each class, in the order of their comparative merit.

N. B.—When Judges are appointed to the inspection of other than live stock the instructions to be altered so as to be applied to that particular inspection; according to the general conditions of the Society, by which the Judges are to be governed in their adjudications.

By Order,
Wm. EVANS, Sect.



Handwritten scribble or signature.



