

**CIHM  
Microfiche  
Series  
(Monographs)**

**ICMH  
Collection de  
microfiches  
(monographies)**



**Canadian Institute for Historical Microreproductions / Institut canadien de microreproductions historiques**

**© 1997**

## Technical and Bibliographic Notes / Notes techniques et bibliographiques

The Institute has attempted to obtain the best original copy available for filming. Features of this copy which may be bibliographically unique, which may alter any of the images in the reproduction, or which may significantly change the usual method of filming are checked below.

- Coloured covers / Couverture de couleur
- Covers damaged / Couverture endommagée
- Covers restored and/or laminated / Couverture restaurée et/ou pelliculée
- Cover title missing / Le titre de couverture manque
- Coloured maps / Cartes géographiques en couleur
- Coloured ink (i.e. other than blue or black) / Encre de couleur (i.e. autre que bleue ou noire)
- Coloured plates and/or illustrations / Planches et/ou illustrations en couleur
- Bound with other material / Relié avec d'autres documents
- Only edition available / Seule édition disponible
- Tight binding may cause shadows or distortion along interior margin / La reliure serrée peut causer de l'ombre ou de la distorsion le long de la marge intérieure.
- Blank leaves added during restorations may appear within the text. Whenever possible, these have been omitted from filming / Il se peut que certaines pages blanches ajoutées lors d'une restauration apparaissent dans le texte, mais, lorsque cela était possible, ces pages n'ont pas été filmées.
- Additional comments / Commentaires supplémentaires:

L'institut a microfilmé le meilleur exemplaire qu'il lui a été possible de se procurer. Les détails de cet exemplaire qui sont peut-être uniques du point de vue bibliographique, qui peuvent modifier une image reproduite, ou qui peuvent entraîner une modification dans la méthode normale de filmage sont indiqués ci-dessous.

- Coloured pages / Pages de couleur
- Pages damaged / Pages endommagées
- Pages restored and/or laminated / Pages restaurées et/ou pelliculées
- Pages discoloured, stained or foxed / Pages décolorées, tachetées ou piquées
- Pages detached / Pages détachées
- Showthrough / Transparence
- Quality of print varies / Qualité inégale de l'impression
- Includes supplementary material / Comprend du matériel supplémentaire
- Pages wholly or partially obscured by errata slips, tissues, etc., have been refilmed to ensure the best possible image / Les pages totalement ou partiellement obscurcies par un feuillet d'errata, une pelure, etc., ont été filmées à nouveau de façon à obtenir la meilleure image possible.
- Opposing pages with varying colouration or discolourations are filmed twice to ensure the best possible image / Les pages s'opposant ayant des colorations variables ou des décolorations sont filmées deux fois afin d'obtenir la meilleure image possible.

This item is filmed at the reduction ratio checked below /  
Ce document est filmé au taux de réduction indiqué ci-dessous.

<b>10x</b>		<b>14x</b>		<b>18x</b>		<b>22x</b>		<b>26x</b>		<b>30x</b>	
						✓					
	<b>12x</b>		<b>16x</b>		<b>20x</b>		<b>24x</b>		<b>28x</b>		<b>32x</b>

The copy filmed here has been reproduced thanks to the generosity of:

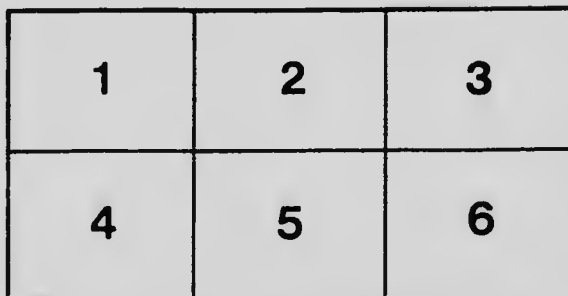
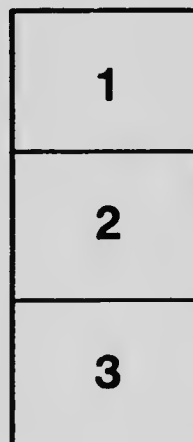
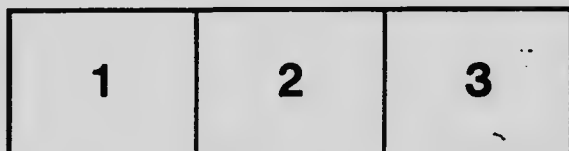
Library  
Agriculture Canada

The images appearing here are the best quality possible considering the condition and legibility of the original copy and in keeping with the filming contract specifications.

Original copies in printed paper covers are filmed beginning with the front cover and ending on the last page with a printed or illustrated impression, or the back cover when appropriate. All other original copies are filmed beginning on the first page with a printed or illustrated impression, and ending on the last page with a printed or illustrated impression.

The last recorded frame on each microfiche shall contain the symbol  $\rightarrow$  (meaning "CONTINUED"), or the symbol  $\nabla$  (meaning "END"), whichever applies.

Maps, plates, charts, etc., may be filmed at different reduction ratios. Those too large to be entirely included in one exposure are filmed beginning in the upper left hand corner, left to right and top to bottom, as many frames as required. The following diagrams illustrate the method:



L'exemplaire filmé fut reproduit grâce à la générosité de:

Bibliothèque  
Agriculture Canada

Les images suivantes ont été reproduites avec le plus grand soin, compte tenu de la condition et de la netteté de l'exemplaire filmé, et en conformité avec les conditions du contrat de filmage.

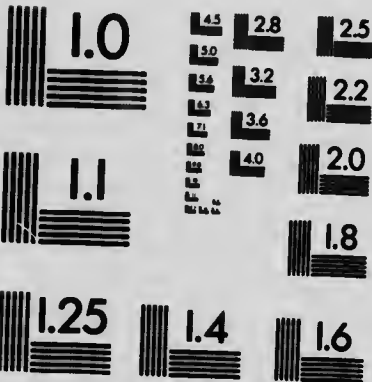
Les exemplaires originaux dont la couverture en papier est imprimée sont filmés en commençant par le premier plat et en terminant soit par la dernière page qui comporte une empreinte d'impression ou d'illustration, soit par le second plat, selon le cas. Tous les autres exemplaires originaux sont filmés en commençant par la première page qui comporte une empreinte d'impression ou d'illustration et en terminant par la dernière page qui comporte une telle empreinte.

Un des symboles suivants apparaîtra sur la dernière image de chaque microfiche, selon le cas: le symbole  $\rightarrow$  signifie "A SUIVRE", le symbole  $\nabla$  signifie "FIN".

Les cartes, planches, tableaux, etc., peuvent être filmés à des taux de réduction différents. Lorsque le document est trop grand pour être reproduit en un seul cliché, il est filmé à partir de l'angle supérieur gauche, de gauche à droite, et de haut en bas, en prenant le nombre d'images nécessaire. Les diagrammes suivants illustrent la méthode.

# MICROCOPY RESOLUTION TEST CHART

(ANSI and ISO TEST CHART No. 2)



**APPLIED IMAGE Inc**

1653 East Main Street  
Rochester, New York 14609 USA  
(716) 482 - 0300 - Phone  
(716) 288 - 5989 - Fax



# Ontario Department of Agriculture

## FRUIT BRANCH

---

### Bee-Keeping in Ontario.

ARRANGED BY MORLEY PETTIT, PROVINCIAL APIARIST.

#### DETAILED REPORT ON THE HONEY PROSPECTS IN THE VARIOUS COUNTIES.

For the purpose of reporting on the condition of bees in Ontario, and the Honey Crop prospects for 1911, blanks were sent to five thousand beekeepers last month by the Fruit Branch of the Department of Agriculture. Six hundred replies were received, from which this report has been summarized.

The total number of colonies reported for the Fall of 1910 was 23,730. For May, 1911, it is 20,414. This represents a winter loss of fourteen per cent., which is five per cent. more than that reported a year ago. This also means that the remaining colonies are weaker in proportion, and are less fit for the work of gathering honey which the clover fields, weather permitting, will provide. On the other hand, the condition of clover is reported almost uniformly good. A few counties report "poor" and "below the average," and some "extra good."

While a spring report is of value in determining the present prospect of the honey crop, there is no other farm crop so entirely dependent on weather conditions from day to day during harvest time. Any sudden change from hot to cold will often check the secretion of nectar in the flowers and reduce the expected honey crop by hundreds of thousands of pounds.

The following is the detailed report arranged by counties:

COUNTY.	No. of Beekeepers on list.	Reports received.	Crop prospects.	No. of Colonies reported—Fall, 1910.	No. of Colonies reported—Spring, 1911.	Per cent. winter loss.	General condition of Bees.
Algoma .....	14	2	Good .....	56	49	13	Good.
Brant .....	80	12	Fair to good .....	379	338	11	Fair to very good.
Bruce .....	202	20	Fair to very good ..	659	553	16	Fair to good.
Carleton .....	106	6	Good .....	342	290	15	Fairly weak to good.
Durham .....	38	5	Poor to good .....	266	232	13	Fair to extra good.
Dufferin .....	61	4	Fairly good .....	228	200	12	Not very good to very good.
Dundas .....	51	6	Good to excellent..	298	249	16	Fair to good.
Elgin .....	123	19	Good .....	407	350	14	Fair to good.
Essex .....	196	10	Poor to good .....	325	248	24	Weak to good.
Frontenac .....	41	6	Fair to very good ..	194	176	10	Weak to very good.
Glengarry .....	129	15	Good to very good ..	1,422	1,345	5	Fair to very good.
Grenville .....	58	11	Poor to good .....	306	283	8	Fair to good.
Grey .....	215	32	Fairly good .....	1,186	911	23	Weak to fair to very good.
Haliburton .....	12	2	Fair to good .....	18	16	11	Good
Halton .....	66	9	Fair to very good ..	310	259	16	Poor to good.
Haldimand .....	96	16	Good to very good ..	811	718	11	Generally good.
Hastings .....	120	20	Poor to fair and good .....	711	627	12	Weak to fair and very good.
Huron .....	163	21	Fair .....	1,197	1,048	12	Weak to good.
Kent .....	70	8	Poor to good .....	307	239	22	Weak to good.
Lennox and Addington .....	52	7	Fair to good .....	412	394	4	Fair to excellent.
Leeds .....	154	22	Fair to very good ..	844	713	16	Fair to extra good.
Lanark .....	78	9	Good if it rains ...	224	203	9	Not good to fair and strong.
Leamington .....	187	29	Good to very good ..	786	701	10	Good to could not be better.
Leeds .....	70	12	Not good to very good .....	452	400	11	Fair to strong.
Essex .....	322	33	Fairly good .....	1,853	1,403	24	Weak to very good.
Montreal .....	18	3	Average to good... ..	178	138	22	Only fairly good.
Muskoka .....	26	3	Fair to very good..	40	29	27	Average to good.
Nipissing .....	16	2	Very good .....	4	3	25	Good.
Northumberland .....	169	16	Poor to fairly good..	368	306	17	Weak to fine and strong.
Norfolk .....	309	18	Good .....	576	490	15	Below Average. Weak to good.
Ontario .....	155	13	Not good to fair and good .....	542	471	13	Fairly good to first class.
Oxford .....	180	15	Not good to fairly good .....	419	343	18	Fair to good.
Peel .....	89	8	Good .....	681	626	8	Fair to good.
Perth .....	203	11	Ordinary to good..	481	412	14	Fair to very good.

COUNTY.	No. of Beekeepers on list.	Reports received.	Crop prospects.	No. of Colonies reported—Fall, 1910.	No. of Colonies reported—Spring, 1911.	Per cent winter loss.	General condition of Bees.
Peterborough ...	48	4	Fairly good to a big crop .....	159	144	9	In good shape.
Prescott .....	97	11	Very poor to very good.....	523	482	8	Good to never was better.
Prince Edward..	64	8	Only fair .....	324	300	8	Fair to good.
Renfrew .....	92	11	Fair to good .....	695	648	7	Generally good.
Russell.....	52	6	Only fair .....	355	321	10	Good.
Stormont .....	67	14	General Report Good.....	700	597	15	Good.
Simcoe .....	100	26	Fairly good.....	641	562	11	Fair to strong.
Thunder Bay ...	5	1	Fair .....	12	7	42	In splendid shape.
Victoria .....	72	21	Below average. Clover winter killed .....	1054	955	9	Fair to first class.
Waterloo .....	58	3	Good .....	21	19	9	Good.
Welland .....	99	10	Good but season late .....	371	245	34	Fair. More weak colonies than usual.
Wellington .....	122	19	Fairly good.....	363	286	21	Fair, extra good.
Wentworth .....	138	14	Good to very Good	293	246	16	Fair w in fine order.
York .....	222	26	Medium to good...	937	840	10	Poor, average extra good.
	5,105	599		23,730	20,414	14	



