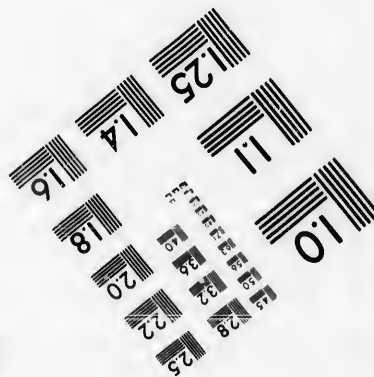
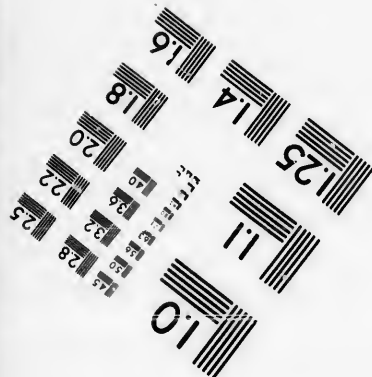
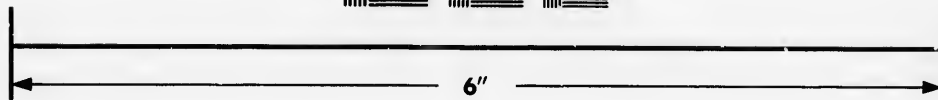
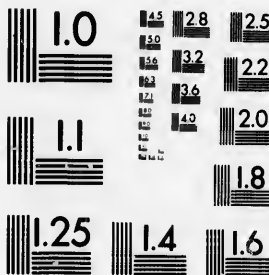


**IMAGE EVALUATION  
TEST TARGET (MT-3)**



**Photographic  
Sciences  
Corporation**

23 WEST MAIN STREET  
WEBSTER, N.Y. 14560  
(716) 872-4503

1.5 2.8 2.5  
1.8 3.2 2.2  
2.0 1.8

**CIHM/ICMH  
Microfiche  
Series.**

**CIHM/ICMH  
Collection de  
microfiches.**



Canadian Institute for Historical Microreproductions / Institut canadien de microreproductions historiques

oi

**© 1987**

Technical and Bibliographic Notes/Notes techniques et bibliographiques

The Institute has attempted to obtain the best original copy available for filming. Features of this copy which may be bibliographically unique, which may alter any of the images in the reproduction, or which may significantly change the usual method of filming, are checked below.

L'Institut a microfilmé le meilleur exemplaire qu'il lui a été possible de se procurer. Les détails de cet exemplaire qui sont peut-être uniques du point de vue bibliographique, qui peuvent modifier une image reproduite, ou qui peuvent exiger une modification dans la méthode normale de filmage sont indiqués ci-dessous.

- |  |  |
|--|--|
| <input type="checkbox"/> Coloured covers/<br>Couverture de couleur   | <input type="checkbox"/> Coloured pages/<br>Pages de couleur   |
| <input type="checkbox"/> Covers damaged/<br>Couverture endommagée  | <input checked="" type="checkbox"/> Pages damaged/<br>Pages endommagées  |
| <input type="checkbox"/> Covers restored and/or laminated/<br>Couverture restaurée et/ou pelliculée  | <input type="checkbox"/> Pages restored and/or laminated/<br>Pages restaurées et/ou pelliculées  |
| <input type="checkbox"/> Cover title missing/<br>Le titre de couverture manque   | <input checked="" type="checkbox"/> Pages discoloured, stained or foxed/<br>Pages décolorées, tachetées ou piquées   |
| <input type="checkbox"/> Coloured maps/<br>Cartes géographiques en couleur   | <input type="checkbox"/> Pages detached/<br>Pages détachées  |
| <input type="checkbox"/> Coloured ink (i.e. other than blue or black)/<br>Encre de couleur (i.e. autre que bleue ou noire)   | <input checked="" type="checkbox"/> Showthrough/<br>Transparence   |
| <input type="checkbox"/> Coloured plates and/or illustrations/<br>Planches et/ou illustrations en couleur  | <input type="checkbox"/> Quality of print varies/<br>Qualité inégale de l'impression   |
| <input type="checkbox"/> Bound with other material/<br>Relié avec d'autres documents   | <input type="checkbox"/> Includes supplementary material/<br>Comprend du matériel supplémentaire   |
| <input type="checkbox"/> Tight binding may cause shadows or distortion<br>along interior margin/<br>La reliure serrée peut causer de l'ombre ou de la<br>distorsion le long de la marge intérieure   | <input type="checkbox"/> Only edition available/<br>Seule édition disponible   |
| <input type="checkbox"/> Blank leaves added during restoration may<br>appear within the text. Whenever possible, these<br>have been omitted from filming/<br>Il se peut que certaines pages blanches ajoutées<br>lors d'une restauration apparaissent dans le texte,<br>mais, lorsque cela était possible, ces pages n'ont<br>pas été filmées. | <input type="checkbox"/> Pages wholly or partially obscured by errata<br>slips, tissues, etc., have been refilmed to<br>ensure the best possible image/<br>Les pages totalement ou partiellement<br>obscurcies par un feuillet d'errata, une pelure,<br>etc., ont été filmées à nouveau de façon à<br>obtenir la meilleure image possible. |
| <input checked="" type="checkbox"/> Additional comments:/<br>Commentaires supplémentaires:   | [Printed ephemera] [4] p.  |

This item is filmed at the reduction ratio checked below/  
Ce document est filmé au taux de réduction indiqué ci-dessous.

10X	12X	14X	16X	18X	20X	22X	24X	26X	28X	30X	32X
						✓					

The copy filmed here has been reproduced thanks to the generosity of:

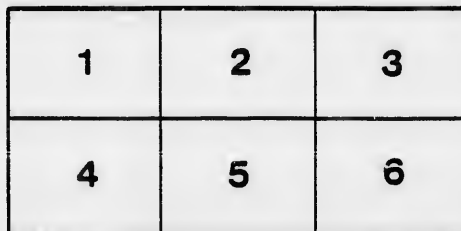
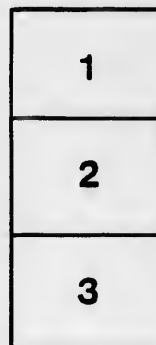
Department of Rare Books  
and Special Collections,  
McGill University, Montreal.

The images appearing here are the best quality possible considering the condition and legibility of the original copy and in keeping with the filming contract specifications.

Original copies in printed paper covers are filmed beginning with the front cover and ending on the last page with a printed or illustrated impression, or the back cover when appropriate. All other original copies are filmed beginning on the first page with a printed or illustrated impression, and ending on the last page with a printed or illustrated impression.

The last recorded frame on each microfiche shall contain the symbol  $\rightarrow$  (meaning "CONTINUED"), or the symbol  $\nabla$  (meaning "END"), whichever applies.

Maps, plates, charts, etc., may be filmed at different reduction ratios. Those too large to be entirely included in one exposure are filmed beginning in the upper left hand corner, left to right and top to bottom, as many frames as required. The following diagrams illustrate the method:



L'exemplaire filmé fut reproduit grâce à la générosité de:

Department of Rare Books  
and Special Collections,  
McGill University, Montreal.

Les images suivantes ont été reproduites avec le plus grand soin, compte tenu de la condition et de la netteté de l'exemplaire filmé, et en conformité avec les conditions du contrat de filmage.

Les exemplaires originaux dont la couverture en papier est imprimée sont filmés en commençant par le premier plat et en terminant soit par la dernière page qui comporte une empreinte d'impression ou d'illustration, soit par le second plat, selon le cas. Tous les autres exemplaires originaux sont filmés en commençant par la première page qui comporte une empreinte d'impression ou d'illustration et en terminant par la dernière page qui comporte une telle empreinte.

Un des symboles suivants apparaîtra sur la dernière image de chaque microfiche, selon le cas: le symbole  $\rightarrow$  signifie "A SUIVRE", le symbole  $\nabla$  signifie "FIN".

Les cartes, planches, tableaux, etc., peuvent être filmés à des taux de réduction différents. Lorsque le document est trop grand pour être reproduit en un seul cliché, il est filmé à partir de l'angle supérieur gauche, de gauche à droite, et de haut en bas, en prenant le nombre d'images nécessaire. Les diagrammes suivants illustrent la méthode.

# KNIGHTHOOD.

[Suggested by this honor having been conferred on Canada's distinguished litterateur, JAMES M. LEMOINE.]

## I.

THE knights of old, as we are told,  
With sword and lance and dazzling shield,  
Rode forth to seek the battlefield,  
Accounting glory more than gold.

## II.

Thus, breathing fight, in armor dight,  
Each met the foeman hand to hand,  
And ready with his flashing brand,  
He slashed and swore with all his might.

## III.

Again, more wise, in princely guise,  
He sallies forth to right old wrong,  
Defend the weak against the strong,  
His couch the earth, his roof the skies.

## IV.

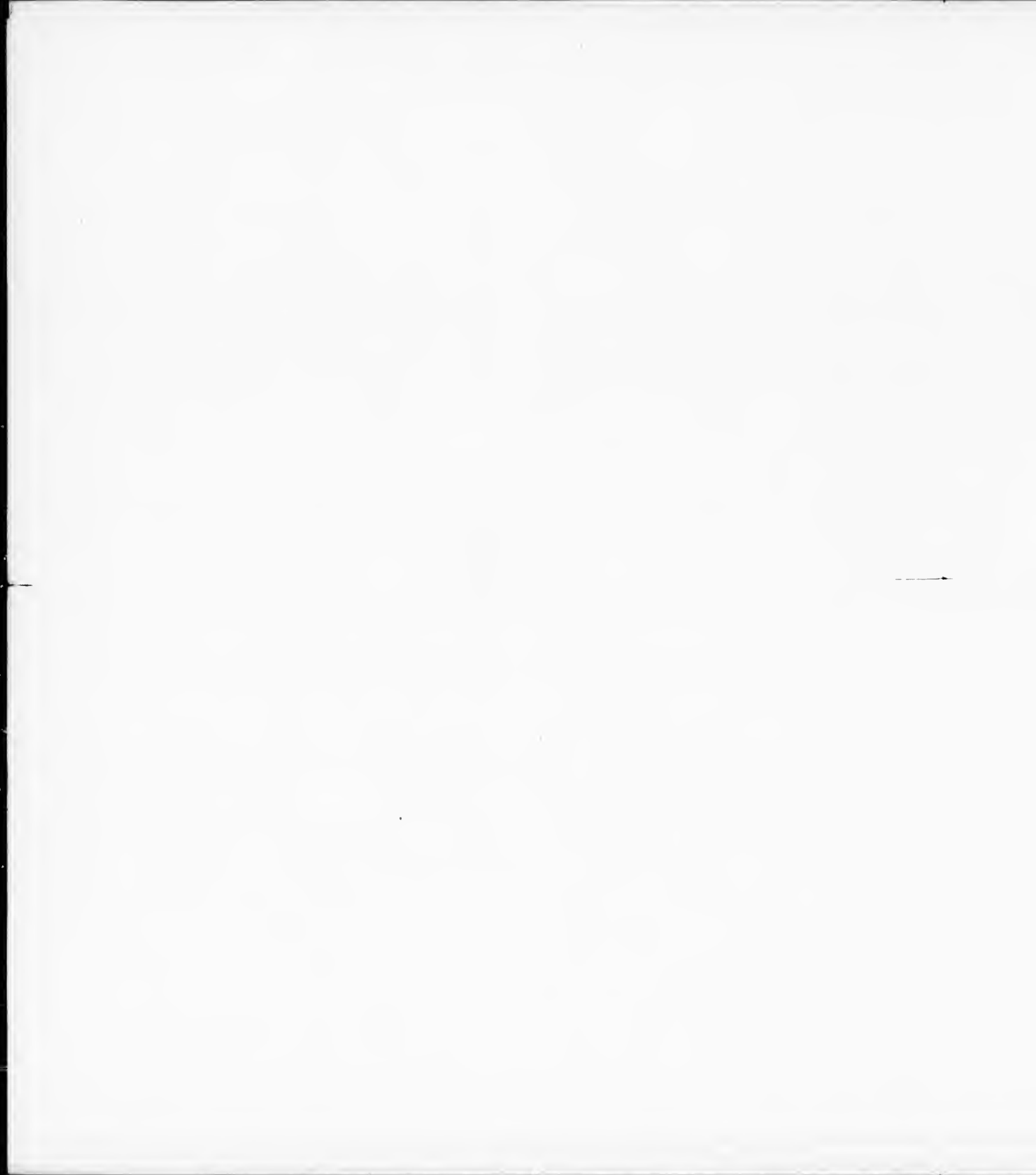
Anon they meet, in gallant heat,  
At tilt and tournament, where Love,  
Concealed within a lady's glove,  
Adds splendor to each thrilling feat.

## V.

Proclaimed the prize, abroad he flies,  
And while incessant plaudits ring  
He fans fair cheeks with viewless wing,  
And takes his fee in smiles and sighs.

## VI.

Long-vanished, long, that courtly throng,  
The knights of Arthur's table round,  
Their neighing steeds that pawed the ground,  
Long hushed the bard's triumphal song.



VII.

Romantic age, though bard and sage  
Have planted roses on thy tomb  
That till the end of time shall bloom,  
Thy record is a crimson page.

VIII.

From this to-day we turn away  
And greet with pride the nobler knights  
Who stand on Learning's tranquil heights  
Shaping the great world's destiny.

IX.

Of sterling coin, most fit to join  
This circle of the chosen few,  
Magnanimous of soul and true,  
Is Canada's revered Lemoine.

X.

His laurel crown provokes no frown,  
No politician's guile has won  
Distinction for her honored son,  
No crooked path has soiled his gown.

XI.

Her woodland bowers, her birds and flowers  
Are grateful to the wizard's hand  
That heightens with its magic wand  
Their beauties in the vernal hours.

XII.

By lake and stream he loves to dream,  
And quaint Quebec's historic muse—  
Who guards the heights—will never lose  
Remembrance of his choicest theme.\*

XIII.

Unstained knight, though change and blight  
May mar the scenes that give thee joy,  
No rust of time can e'er destroy  
Thy genius or obscure its light.

GEORGE MARTIN.

Montreal, March, 1897.

---

\* History of Quebec, Past and Present.

